

LEA Name : Eastern Lebanon County SD
Address : 180 Elco Dr
Myerstown , PA 17067

County : Lebanon
AUN Number : 113382303
LEA Type : SD

Annual Financial Report
Accuracy Certification Statement

For Fiscal Year Ending
6/30/2024

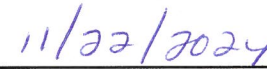
Pennsylvania Department of Education
&
Office of Comptroller Operations

PDE-2056: Intermediate Unit
PDE-2057: School District, AVTS/CTC, Charter School,
and Special Program Jointure

CERTIFICATION: By signing this page I agree that the electronic data submitted is a complete and accurate statement of the financial operations and status of the local education agency for the fiscal year. It has been prepared in accordance with generally accepted accounting principles and established Commonwealth of PA reporting guidelines.



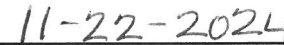
Chief School Administrator Signature



Date



Board Secretary Signature



Date

Megan Hanichak

Contact Person

mhanichak@elcosd.org

Contact Person E-mail Address

(717)866-7117

Ext :10811

Contact Person Telephone Number

Contact Person Fax Number

Audit Certification
Annual Financial Report:
For Fiscal Year Ending **6/30/2024**
(Pursuant to PA School Code Section 218(b))

LEA Name : Eastern Lebanon County SD
AUN Number : 113382303
County : Lebanon

Audit Certification Due: 12/31/2024

This certification is applicable to the Annual Financial Report data submitted through the Consolidated Financial Reporting System (CFRS).

CERTIFICATION: By signing this page I agree that the financial statements of the school have been properly audited as noted above pursuant to Article XXIV, and in the auditor's professional opinion, the Annual Financial Report (PDE-2057) submitted through CFRS is materially consistent with the audited financial statements.

Chief School Administrator

Julia R Vicente
Signature

11/22/2024
Date

Board Secretary

Lori Glosier
Signature

11-22-2024
Date

Megan Hanichak

Contact Person

mhanichak@elcosd.org

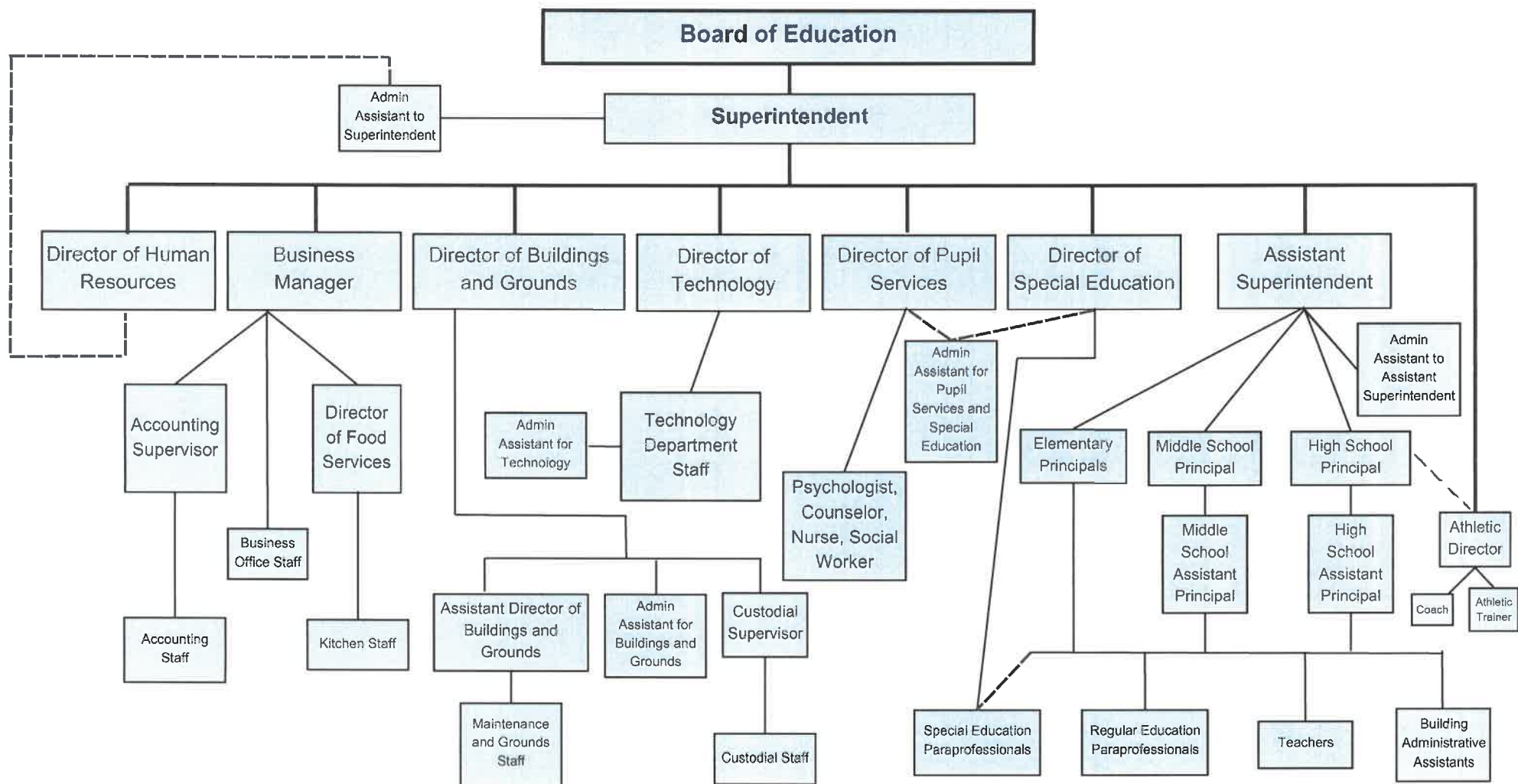
Contact Person E-mail Address

(717)866-7117

Ext :10811

Contact Person Telephone Number

Contact Person Fax Number



Book	Policy Manual
Section	600 Finances
Title	GASB Statement 34
Code	622
Status	Active
Adopted	September 4, 2018

Purpose

The Board recognizes the need to implement the required accounting and financial reporting standards stipulated by the Pennsylvania Department of Education.

The primary objectives of implementing the Governmental Accounting Standards Board (GASB) Statement 34 are to assure compliance with state requirements, and properly account for both the financial and economic resources of the District.

Authority

Participation of the District in any such activity shall be in accordance with Board policy.[1][2]

Delegation of Responsibility

The responsibility to coordinate the compilation and preparation of all information necessary to implement this policy is delegated to the Business Manager.

The designated individual shall be responsible for implementing the necessary procedures to establish and maintain a fixed asset inventory, including depreciation schedules. Depreciation shall be computed on a straight-line basis over the useful lives of the assets, using an averaging convention. Normal maintenance and repairs shall be charged to expense as incurred; major renewals and betterments that materially extend the life or increase the value of the asset shall be capitalized. A schedule of accumulated depreciation shall be consistent from year to year. The basis for depreciation, including groups of assets and useful lives, shall be in writing and submitted for review to the Board.

The Business Manager shall prepare the required Management Discussion and Analysis (MD&A). The MD&A shall be in the form required by GASB Statement 34 and shall be submitted to the Board for approval, prior to publication.

Prior to submission of the MD&A for Board approval, the District's independent auditors shall review the MD&A, in accordance with SAS No. 52, "Required Supplementary Information".

Legal	1. 24 P.S. 218
	2. 24 P.S. 613
	Governmental Accounting Standards Board, Statement No. 34

CLASS CODE	DESCRIPTION	LIFE
00	At Reported Cost	0
01	Land	0
02	Leasehold Improvements	20
03	Frame, Minor Buildings, small (sheds, dugouts, pavilions, or smaller than 500 S.F.)	20
04	Frame, Minor Buildings, large (garages, concession stands, or between 500 and 1,500 S.F.)	25
05	Frame, Major Buildings (residences, portable classrooms, or larger than 1,500 S.F.)	30
06	Joisted Masonry, Minor Buildings (concession stands, garages, dugouts, or smaller than 1,500 S.F.)	30
07	Joisted Masonry, Major Buildings (larger than 1,500 S.F.)	40
08	Non-Combustible, Minor Buildings (smaller than 1,500 S.F.)	30
09	Non-Combustible, Major Buildings (larger than 1,500 S.F.)	40
10	Masonry Non-Combustible, Minor Buildings (smaller than 1,500 S.F.)	30
11	Masonry Non-Combustible, Major Buildings (larger than 1,500 S.F.)	40
12	Modified Fire Resistive, Minor Buildings (smaller than 1,500 S.F.)	30
13	Modified Fire Resistive, Major Buildings (larger than 1,500 S.F.)	40
14	Fire Resistive, Minor Buildings (smaller than 1,500 S.F.)	30
15	Fire Resistive, Major Buildings (larger than 1,500 S.F.)	40
16	Building Improvements, Hvac, Roofing, or unclassified under \$500,000	20
17	Building Improvements, electrical and plumbing	30
18	Building Improvements, sprinkler and fire alarm system	25
19	Building Improvements, unclassified over \$500,000	30
20	Insurable Site Improvements	20
21	Uninsurable Site Improvements	20
22	Outdoor Art	0
25	Playground and Outdoor Athletic Equipment	15
30	Licensed Vehicles	8
31	Buses	8
32	Buses-Capital Lease	8
33	Buses-Operating Lease	0
34	Police Vehicles	5
35	Fire Department and Emergency Vehicles	7
39	Grounds Equipment	15
40	Furniture	20
41	Indoor Art	0
50	Audio Visual Equipment	7
51	Business Machines	7
52	Communication Systems	20
56	Equipment-Capital Lease	7
57	Equipment-Operating Lease	0
60	Machinery and Vocational	15
61	Food Service and Appliances	15
62	Lab, Science and Engineering	10
63	Police and Fire Equipment	15
64	Firearms	7
65	Janitorial and Maintenance Equipment	15
66	Municipal Utility Equipment	10
70	Computer Equipment	5
71	File Servers and Networking Equipment	7
75	Printers	7
80	Athletic and Sports Equipment	15
84	Music and Band Equipment and Furniture	15
85	Musical Instruments	15
89	Athletic and Band Uniforms	10
90	Library Books	20
91	Textbooks	5
92	Supplies	0
93	Software	5
94	Infrastructure, Electric Utilities	50
95	Infrastructure, Water Utilities	50
96	Infrastructure, Municipal Wastewater Treatment Plant	24
97	Infrastructure, Municipal Sewer	50
99	Infrastructure, Unclassified	50

<u>Val Number</u>	<u>Description</u>	<u>Justification</u>
30116	Revenue Detail: A large amount has been reported as Earnings on Investments in Fund 32, account 6500, which should only include interest and/or dividend earnings. Correct or provide a brief explanation of the revenue reported. Revenue Detail 6500, Fund 32: \$17,814.33	Only interest has been recorded to this account, interest rates increased.
50160	SOIN: All Governmental Fund General Obligation Bonds must include an amount for Interest Paid during Fiscal Year. Correct data or enter a justification.	The GOB Series 2024 was issued in January of 2024. No payment was made until the 24-25 school year.

Amounts Expressed in Whole Dollars		<u>General Fund</u> <u>(10)</u>	<u>Student Sponsored</u> <u>Activity Fund</u> <u>(21)</u>	<u>Public Purpose Trust</u> <u>(27)</u>	<u>Other Compt Approved</u> <u>(28)</u>	<u>Athletic / Activity</u> <u>(29)</u>
Assets And Deferred Outflows Of Resources						
Assets						
0100	Cash and Cash Equivalents	8,759,604				
0110	Investments	808,778				
0120	Taxes Receivable	563,762				
0130	Due From Other Funds	41,116				
0141	Due From Other Governments	2,075,743				
0142	State Revenue Receivable					
0143	Federal Revenue Receivable					
0145	Other Intergovernmental Revenue Receivable					
0146	Due from Primary Government					
0147	Due from Component Unit					
0150	Other Receivables	168,146				
0170	Inventories	66,196				
0180	Prepaid Expenses (Expenditures)	150,601				
0190	Other Current Assets					
Total Assets		\$12,633,946				
0910	Deferred Outflows of Resources					
Total Assets And Deferred Outflows Of Resources		\$12,633,946				

LEA : 113382303 Eastern Lebanon County SD

Printed 11/26/2024 10:25:09 AM

Amounts Expressed in Whole Dollars		<u>Capital Reserve (690.</u> <u>1850)</u> <u>(31)</u>	<u>Capital Reserve (1431)</u> <u>(32)</u>	<u>Other Capital Projects</u> <u>Fund</u> <u>(39)</u>	<u>Debt Service</u> <u>(40)</u>	<u>Permanent</u> <u>(90)</u>
Assets And Deferred Outflows Of Resources						
Assets						
0100	Cash and Cash Equivalents		256,432	11,393,758		
0110	Investments					
0120	Taxes Receivable					
0130	Due From Other Funds					
0141	Due From Other Governments					
0142	State Revenue Receivable					
0143	Federal Revenue Receivable					
0145	Other Intergovernmental Revenue Receivable					
0146	Due from Primary Government					
0147	Due from Component Unit					
0150	Other Receivables					
0170	Inventories					
0180	Prepaid Expenses (Expenditures)					
0190	Other Current Assets					
Total Assets			\$256,432	\$11,393,758		
0910	Deferred Outflows of Resources					
Total Assets And Deferred Outflows Of Resources			\$256,432	\$11,393,758		

LEA : 113382303 Eastern Lebanon County SD

Printed 11/26/2024 10:25:09 AM

Amounts Expressed in Whole Dollars		<u>Total Governmental</u> <u>Funds</u>
Assets And Deferred Outflows Of Resources		
Assets		
0100 Cash and Cash Equivalents	20,409,794	
0110 Investments	808,778	
0120 Taxes Receivable	563,762	
0130 Due From Other Funds	41,116	
0141 Due From Other Governments	2,075,743	
0142 State Revenue Receivable		
0143 Federal Revenue Receivable		
0145 Other Intergovernmental Revenue Receivable		
0146 Due from Primary Government		
0147 Due from Component Unit		
0150 Other Receivables	168,146	
0170 Inventories	66,196	
0180 Prepaid Expenses (Expenditures)	150,601	
0190 Other Current Assets		
Total Assets	\$24,284,136	
0910 Deferred Outflows of Resources		
Total Assets And Deferred Outflows Of Resources	\$24,284,136	

LEA : 113382303 Eastern Lebanon County SD

Printed 11/26/2024 10:25:09 AM

Amounts Expressed in Whole Dollars	<u>General Fund</u> <u>(10)</u>	<u>Student Sponsored</u> <u>Activity Fund</u> <u>(21)</u>	<u>Public Purpose Trust</u> <u>(27)</u>	<u>Other Compt Approved</u> <u>(28)</u>	<u>Athletic / Activity</u> <u>(29)</u>
Liabilities And Deferred Inflows Of Resources And Fund Balances					
Liabilities					
0400 Due to Other Funds	72,754				
0411 Due to Other Governments					
0412 Due to Primary Government					
0413 Due to Component Unit					
0420 Accounts Payable	894,198				
0430 Contracts Payable					
0440 Current Portion of Long-Term Debt					
0450 Short-Term Payables					
0461 Accrued Salaries and Benefits	2,597,431				
0462 Payroll Deductions and Withholding					
0480 Unearned Revenues					
0490 Other Current Liabilities	8,432				
Total Liabilities	\$3,572,815				
0950 Deferred Inflows of Resources	303,023				
Fund Balances					
0810 Nonspendable Fund Balance	216,797				
0820 Restricted Fund Balance					
0830 Committed Fund Balance	1,000,000				
0840 Assigned Fund Balance	6,000,000				
0850 Unassigned Fund Balance	1,541,311				
Total Fund Balances	\$8,758,108				
Total Liabilities, Deferred Inflows Of Resources And Fund Balances	\$12,633,946				

LEA : 113382303 Eastern Lebanon County SD

Amounts Expressed in Whole Dollars		<u>Capital Reserve (690.</u> <u>1850)</u> <u>(31)</u>	<u>Capital Reserve (1431)</u> <u>(32)</u>	<u>Other Capital Projects</u> <u>Fund</u> <u>(39)</u>	<u>Debt Service</u> <u>(40)</u>	<u>Permanent</u> <u>(90)</u>
Liabilities And Deferred Inflows Of Resources And Fund Balances						
Liabilities						
0400	Due to Other Funds					
0411	Due to Other Governments					
0412	Due to Primary Government					
0413	Due to Component Unit					
0420	Accounts Payable		140	2,529,650		
0430	Contracts Payable			1,663,575		
0440	Current Portion of Long-Term Debt					
0450	Short-Term Payables					
0461	Accrued Salaries and Benefits					
0462	Payroll Deductions and Withholding					
0480	Unearned Revenues					
0490	Other Current Liabilities				1,000	
Total Liabilities			\$140	\$4,193,225	\$1,000	
0950	Deferred Inflows of Resources					
Fund Balances						
0810	Nonspendable Fund Balance					
0820	Restricted Fund Balance		256,292	7,200,533		
0830	Committed Fund Balance					
0840	Assigned Fund Balance					
0850	Unassigned Fund Balance				(1,000)	
Total Fund Balances			\$256,292	\$7,200,533	(\$1,000)	
Total Liabilities, Deferred Inflows Of Resources And Fund Balances			\$256,432	\$11,393,758		

LEA : 113382303 Eastern Lebanon County SD

Printed 11/26/2024 10:25:09 AM

Amounts Expressed in Whole Dollars		<u>Total Governmental</u> <u>Funds</u>
Liabilities And Deferred Inflows Of Resources And Fund Balances		
Liabilities		
0400 Due to Other Funds		72,754
0411 Due to Other Governments		
0412 Due to Primary Government		
0413 Due to Component Unit		
0420 Accounts Payable		3,423,988
0430 Contracts Payable		1,663,575
0440 Current Portion of Long-Term Debt		
0450 Short-Term Payables		
0461 Accrued Salaries and Benefits		2,597,431
0462 Payroll Deductions and Withholding		
0480 Unearned Revenues		
0490 Other Current Liabilities		9,432
Total Liabilities		\$7,767,180
0950 Deferred Inflows of Resources		303,023
Fund Balances		
0810 Nonspendable Fund Balance		216,797
0820 Restricted Fund Balance		7,456,825
0830 Committed Fund Balance		1,000,000
0840 Assigned Fund Balance		6,000,000
0850 Unassigned Fund Balance		1,540,311
Total Fund Balances		\$16,213,933
Total Liabilities, Deferred Inflows Of Resources And Fund Balances		\$24,284,136

Amounts Expressed in Whole Dollars	<u>General Fund</u> <u>(10)</u>	<u>Student Sponsored</u> <u>Activity Fund</u> <u>(21)</u>	<u>Public Purpose Trust</u> <u>(27)</u>	<u>Other Compt Approved</u> <u>(28)</u>	<u>Athletic / Activity</u> <u>(29)</u>
Revenues					
6000 Revenue from Local Sources	35,522,678				
7000 Revenue from State Sources	15,599,054				
8000 Revenue from Federal Sources	1,774,130				
Total Revenues	\$52,895,862				
Expenditures					
1000 Instruction	31,016,919				
2000 Support Services	15,932,967				
3000 Operation of Non-Instructional Services	1,208,791				
4000 Facilities Acquisition, Construction and Improvement Services					
5110 Debt Service					
5130 Refund of Prior Year Revenues / Receipts	61,632				
5140 Leases and Other Right-to-Use Arrangements	412,600				
Total Expenditures	\$48,632,909				
Excess (Deficiency) Of Revenues Over Expenditures	\$4,262,953				
Other Financing Sources (Uses)					
9110 Face Value of Bonds Issued					
9120 Proceeds from Refunding of Bonds					
9130 Bond Premiums					
9200 Proceeds from Extended Term Financing, Leases, and Other Right-to-Use Arrangements					
9300 Interfund Transfers - IN					
9400 Sale of or Compensation for Loss of Fixed Assets	3,301				
9710 Transfers from Component Units					
9720 Transfers from Primary Governments					
9910 Other Financing Sources Not Listed in the 9000 Series					
9990 Insurance Recoveries					
5120 Debt Service – Refunded Bonds					
5150 Bond Discounts					
5200 Interfund Transfers – Out	5,659,583				
5300 Transfers Out to Component Units/Primary Governments					
Total Other Financing Sources (Uses)	(\$5,656,282)				

Amounts Expressed in Whole Dollars		<u>Capital Reserve (690.1850)</u> <u>(31)</u>	<u>Capital Reserve (1431)</u> <u>(32)</u>	<u>Other Capital Projects</u> <u>Fund</u> <u>(39)</u>	<u>Debt Service</u> <u>(40)</u>	<u>Permanent</u> <u>(90)</u>
Revenues						
6000	Revenue from Local Sources		17,814	496,313		
7000	Revenue from State Sources					
8000	Revenue from Federal Sources					
Total Revenues			\$17,814	\$496,313		
Expenditures						
1000	Instruction			29,888		
2000	Support Services		524,099	1,318,659		
3000	Operation of Non-Instructional Services					
4000	Facilities Acquisition, Construction and Improvement Services		195,583	15,400,821		
5110	Debt Service				5,110,583	
5130	Refund of Prior Year Revenues / Receipts					
5140	Leases and Other Right-to-Use Arrangements					
Total Expenditures			\$719,682	\$16,749,368	\$5,110,583	
Excess (Deficiency) Of Revenues Over Expenditures			(\$701,868)	(\$16,253,055)	(\$5,110,583)	
Other Financing Sources (Uses)						
9110	Face Value of Bonds Issued			13,775,000		
9120	Proceeds from Refunding of Bonds					
9130	Bond Premiums			1,152,085		
9200	Proceeds from Extended Term Financing, Leases, and Other Right-to-Use Arrangements					
9300	Interfund Transfers - IN		550,000		5,109,583	
9400	Sale of or Compensation for Loss of Fixed Assets					
9710	Transfers from Component Units					
9720	Transfers from Primary Governments					
9910	Other Financing Sources Not Listed in the 9000 Series					
9990	Insurance Recoveries					
5120	Debt Service – Refunded Bonds					
5150	Bond Discounts					
5200	Interfund Transfers – Out					
5300	Transfers Out to Component Units/Primary Governments					
Total Other Financing Sources (Uses)			\$550,000	\$14,927,085	\$5,109,583	

Amounts Expressed in Whole Dollars		<u>Total Governmental Funds</u>
Revenues		
6000 Revenue from Local Sources		36,036,805
7000 Revenue from State Sources		15,599,054
8000 Revenue from Federal Sources		1,774,130
Total Revenues		\$53,409,989
Expenditures		
1000 Instruction		31,046,807
2000 Support Services		17,775,725
3000 Operation of Non-Instructional Services		1,208,791
4000 Facilities Acquisition, Construction and Improvement Services		15,596,404
5110 Debt Service		5,110,583
5130 Refund of Prior Year Revenues / Receipts		61,632
5140 Leases and Other Right-to-Use Arrangements		412,600
Total Expenditures		\$71,212,542
Excess (Deficiency) Of Revenues Over Expenditures		(\$17,802,553)
Other Financing Sources (Uses)		
9110 Face Value of Bonds Issued		13,775,000
9120 Proceeds from Refunding of Bonds		
9130 Bond Premiums		1,152,085
9200 Proceeds from Extended Term Financing, Leases, and Other Right-to-Use Arrangements		
9300 Interfund Transfers - IN		5,659,583
9400 Sale of or Compensation for Loss of Fixed Assets		3,301
9710 Transfers from Component Units		
9720 Transfers from Primary Governments		
9910 Other Financing Sources Not Listed in the 9000 Series		
9990 Insurance Recoveries		
5120 Debt Service – Refunded Bonds		
5150 Bond Discounts		
5200 Interfund Transfers – Out		5,659,583
5300 Transfers Out to Component Units/Primary Governments		
Total Other Financing Sources (Uses)		\$14,930,386

Amounts Expressed in Whole Dollars		<u>General Fund</u> <u>(10)</u>	<u>Student Sponsored</u> <u>Activity Fund</u> <u>(21)</u>	<u>Public Purpose Trust</u> <u>(27)</u>	<u>Other Compt Approved</u> <u>(28)</u>	<u>Athletic / Activity</u> <u>(29)</u>
Special And Extraordinary Items						
9920	Special Items – Gains					
9930	Extraordinary Items – Gains					
5520	Special Items – Losses					
5530	Extraordinary Items – Losses					
Net Change In Fund Balances		(\$1,393,329)				
Fund Balance						
0001	Fund Balance - Beginning of Fiscal Year	10,151,437				
Fund Balance - End Of Year		\$8,758,108				

Amounts Expressed in Whole Dollars		<u>Capital Reserve (690.</u> <u>1850)</u> <u>(31)</u>	<u>Capital Reserve (1431)</u> <u>(32)</u>	<u>Other Capital Projects</u> <u>Fund</u> <u>(39)</u>	<u>Debt Service</u> <u>(40)</u>	<u>Permanent</u> <u>(90)</u>
Special And Extraordinary Items						
9920	Special Items – Gains					
9930	Extraordinary Items – Gains					
5520	Special Items – Losses					
5530	Extraordinary Items – Losses					
Net Change In Fund Balances			(\$151,868)	(\$1,325,970)	(\$1,000)	
Fund Balance						
0001	Fund Balance - Beginning of Fiscal Year		408,161	8,526,502		
Fund Balance - End Of Year			\$256,293	\$7,200,532	(\$1,000)	

Amounts Expressed in Whole Dollars		<u>Total Governmental</u> <u>Funds</u>
Special And Extraordinary Items		
9920	Special Items – Gains	
9930	Extraordinary Items – Gains	
5520	Special Items – Losses	
5530	Extraordinary Items – Losses	
Net Change In Fund Balances		(\$2,872,167)
Fund Balance		
0001	Fund Balance - Beginning of Fiscal Year	19,086,100
Fund Balance - End Of Year		\$16,213,933

LEA : 113382303 Eastern Lebanon County SD

Printed 11/26/2024 10:25:19 AM

Amounts Expressed in Whole Dollars		<u>Food Service</u> <u>(51)</u>	<u>Child Care</u> <u>Operations</u> <u>(52)</u>	<u>Other Enterprise</u> <u>(58)</u>	<u>TOTAL</u>	<u>Internal Service</u> <u>(60)</u>
Assets And Deferred Outflows Of Resources						
Current Assets						
0100	Cash and Cash Equivalents	257,357			257,357	
0110	Investments					
0130	Due From Other Funds	84,035			84,035	
0141	Due From Other Governments	345,858			345,858	
0142	State Revenue Receivable					
0143	Federal Revenue Receivable					
0146	Due from Primary Government					
0147	Due from Component Unit					
0150	Other Receivables	61			61	
0170	Inventories	16,426			16,426	
0180	Prepaid Expenses (Expenditures)					
0190	Other Current Assets					
Total Current Assets		\$703,737			\$703,737	
Noncurrent Assets						
0211	Land					
0212	Site Improvements (Net)					
0220	Buildings and Building Improvements (Net)					
0230	Tangible Property and Intangible Right-To-Use Assets (Net)					
0250	Construction in Progress					
0260	Long Term Prepayments					
0290	Other Noncurrent Assets					
Total Noncurrent Assets						
0910	Deferred Outflows of Resources	256,721			256,721	
Total Assets And Deferred Outflows Of Resources		\$960,458			\$960,458	

Amounts Expressed in Whole Dollars	<u>Food Service</u> <u>(51)</u>	<u>Child Care</u> <u>Operations</u> <u>(52)</u>	<u>Other Enterprise</u> <u>(58)</u>	<u>TOTAL</u>	<u>Internal Service</u> <u>(60)</u>
Liabilities And Deferred Inflows Of Resources And Net Position					
Current Liabilities					
0400 Due to Other Funds	52,397			52,397	
0411 Due to Other Governments					
0413 Due to Component Unit					
0420 Accounts Payable	79,537			79,537	
0430 Contracts Payable					
0440 Current Portion of Long-Term Debt	20,931			20,931	
0450 Short-Term Payables					
0461 Accrued Salaries and Benefits					
0462 Payroll Deductions and Withholding					
0480 Unearned Revenues	40,271			40,271	
0490 Other Current Liabilities					
Total Current Liabilities	\$193,136			\$193,136	
Noncurrent Liabilities					
0510 Bonds Payable					
0520 Extended-Term Financing Agreements Payable					
0530 Lease and Other Right-To-Use Obligations					
0540 Accumulated Compensated Absences					
0550 Authority Lease Obligations					
0560 Other Post-Employment Benefits (OPEB)	117,250			117,250	
0570 Net Pension Liability	1,057,003			1,057,003	
0599 Other Noncurrent Liabilities					
Total Noncurrent Liabilities	\$1,174,253			\$1,174,253	
Total Liabilities	\$1,367,389			\$1,367,389	
0950 Deferred Inflows of Resources	174,602			174,602	
Net Position					
0791 Net Investment in Capital Assets					
0008 Restricted Net Position (0792 – 0798)					
0799 Unrestricted Net Position	(581,533)			(581,533)	
Total Net Position	(\$581,533)			(\$581,533)	
Total Liabilities And Deferred Inflows Of Resources And Net Position	\$960,458			\$960,458	

Amounts Expressed in Whole Dollars		<u>Food Service</u> <u>(51)</u>	<u>Child Care Operations</u> <u>(52)</u>	<u>Other Enterprise</u> <u>(58)</u>	<u>TOTAL</u>	<u>Internal Service</u> <u>(60)</u>
Operating Revenues						
6600	Food Service Revenue	607,187			607,187	
0071	Charges for Services					
0072	Other Operating Revenue					
Total Operating Revenues		\$607,187			\$607,187	
Operating Expenses						
100	Personnel Services – Salaries	370,727			370,727	
200	Personnel Services – Employee Benefits	214,696			214,696	
300	Purchased Professional and Technical Services	59,964			59,964	
400	Purchased Property Services	13,616			13,616	
500	Other Purchased Services	75,456			75,456	
600	Supplies	1,194,042			1,194,042	
740	Depreciation					
770	Amortization Expense					
810	Dues and Fees					
880	Refunds of Prior Years' Receipts					
890	Miscellaneous Expenditures					
Total Operating Expenses		\$1,928,501			\$1,928,501	
Operating Income (Loss)		(\$1,321,314)			(\$1,321,314)	
Non Operating Revenues (Expenses)						
6500	Earnings on Investments	6,609			6,609	
6830	Federal Revenue from Intermediary Sources					
6920	Contributions and Donations from Private Sources					
6930	Gains or Losses on Sale of Fixed Assets					
6991	Refunds of a Prior Year Expenditure					
7000	Revenue from State Sources	262,648			262,648	
8000	Revenue from Federal Sources	1,166,020			1,166,020	
9990	Insurance Recoveries					
820	Claims and Judgments Against the LEA					
830	Interest					
TOTAL Non Operating Revenues (Expenses)		\$1,435,277			\$1,435,277	
Income (Loss) Before Contributions And Transfers		\$113,963			\$113,963	

Amounts Expressed in Whole Dollars	<u>Food Service</u> <u>(51)</u>	<u>Child Care Operations</u> <u>(52)</u>	<u>Other Enterprise</u> <u>(58)</u>	<u>TOTAL</u>	<u>Internal Service</u> <u>(60)</u>
Contributions, Transfers, and Special and Extraordinary Items					
5200 Interfund Transfers – Out					
5300 Transfers Out to Component Units/Primary Governments					
5520 Special Items – Losses					
5530 Extraordinary Items – Losses					
9300 Interfund Transfers - IN					
9500 Capital Contributions					
9700 Transfers IN From Component Units/Primary Governments					
9920 Special Items – Gains					
9930 Extraordinary Items – Gains					
Change In Net Position	\$113,963			\$113,963	
0002 Net Position - Beginning of Fiscal Year	(695,496)			(695,496)	
0003 Accounting Changes / Residual Equity Transfers					
Net Position - End Of Year	(\$581,533)			(\$581,533)	

LEA : 113382303 Eastern Lebanon County SD

Printed 11/26/2024 10:25:28 AM

Amounts Expressed in Whole Dollars		<u>Food Service</u> <u>(51)</u>	<u>Child Care Operations</u> <u>(52)</u>	<u>Other Enterprise</u> <u>(58)</u>	<u>TOTAL</u>	<u>Internal Service(60)</u>
Cash Flows From Operating Activities						
0011	Cash Receipts From Users	629,747			629,747	
0012	Cash Receipts From Assessments Made to Other Funds					
0013	Cash Receipts From Earnings on Investments					
0014	Cash Receipts From Other Operating Revenue					
0015	Cash Payments To Employees For Services	547,223			547,223	
0016	Cash Payments For Insurance Claims					
0017	Cash Payments To Suppliers For Goods and Services	1,310,425			1,310,425	
0018	Cash Payments For Other Operating Expenses					
Net Cash Provided By (Used For) Operating Activities		(\$1,227,901)			(\$1,227,901)	
Cash Flows From Non-Capital Financing Activities						
0021	Receipts From Local Sources - 6000					
0022	Receipts From State Sources - 7000	238,112			238,112	
0023	Receipts From Federal Sources -8000	862,655			862,655	
0024	Notes and Loans Received (Repaid)					
0025	Interest Paid on Notes/Loans - 5100-830					
0026	Operating Transfers In (Out)/Residual Equity Trans					
0027	Operating Transfers In (Out) Primary Government / Comp Unit					
0028	Receipts From Refund of Prior Year Expenditures - 6991					
0029	Special and Extraordinary Gains (losses)					
0030	Receipts from Insurance Recoveries -9990					
Net Cash Prov By (Used for) Non-Capital Financing Activities		\$1,100,767			\$1,100,767	
Cash Flows From Capital and Related Financing Activities						
0031	Payments For Fac Acq, Const, and Imp - 4000					
0032	Proceeds from Disposal of Capital Assets					
0033	Proceeds From Extended Term Financing - 9200					
0034	Principal Paid on Financing Agreements					
0035	Interest Paid on Financing Agreements - 5100-830					
0036	(Inc) Dec in Contributed Capital					
Net Cash Prov By (Used for) Capital and Related Financing Activities						
Cash Flows From Investing Activities						
0041	Earnings on Investments - 6500	6,609			6,609	
0042	Purchase of Inv Securities / Deposits to Inv Pools					
0043	Receipts From Investment Pool Withdrawals					
0044	Proceeds from Sale and Maturity of Inv Securities					

0045 Loans Received (Paid)

Net Cash Prov By (Used for) Investing Activities	\$6,609	\$6,609
--	---------	---------

LEA : 113382303 Eastern Lebanon County SD

Printed 11/26/2024 10:25:28 AM

	<u>Food Service</u> <u>(51)</u>	<u>Child Care Operations</u> <u>(52)</u>	<u>Other Enterprise</u> <u>(58)</u>	<u>TOTAL</u>	<u>Internal Service</u> <u>(60)</u>
Net Increase (Decrease) in Cash Flows	(120,525)			(120,525)	
0004 Cash and Cash Equivalents Beginning of Year	377,882			377,882	
Cash and Cash Equivalents at Year End	\$257,357			\$257,357	
Reconciliation of Operating Income (Loss) To Net Cash Provided by (Used For) Operating Activities					
0005 Operating Income (Loss) per REP	(1,321,314)			(1,321,314)	
Adjustments					
0051 Depreciation and Net Amortization					
0052 Provision for Uncollectible Accounts					
0053 Other Adjustments	126,690			126,690	
Effect of Changes in Assets, Liabilities, Deferred Outflows and Deferred Inflows					
0054 (Inc) Dec In Accounts Receivable (0120-0150)					
0055 Advances to Other Funds					
0056 (Inc) Dec in Inventories (0170)					
0057 (Inc) Dec in Prepaid Expenses (0180)					
0058 (Inc) Dec in Other Current or Noncurrent Assets					
0064 Deferred Outflows (0910)	2,970			2,970	
0059 Inc (Dec) in Accounts Payable (0400-0450)	43,917			43,917	
0060 Inc (Dec) in Accrued Salaries/Benefits (0461)					
0065 Inc (Dec) in Net Pension Liabilities (0570)	12,408			12,408	
0066 Inc (Dec) in Other Postemp Benefit Oblig (0560)	432			432	
0061 Inc (Dec) in Payroll Deductions/Withholding (0462)					
0062 Inc (Dec) in Unearned Revenue (0480)					
0063 Inc (Dec) in Other Current or Noncurrent Liabilities	(68,712)			(68,712)	
0067 Deferred Inflows (0950)	(24,292)			(24,292)	
Total Adjustments	\$93,413			\$93,413	
Cash Provided By (Used for) Total	(\$1,227,901)			(\$1,227,901)	

COMBINED STATEMENT OF CASH FLOWS
SCHEDULE OF NONCASH INVESTING, CAPITAL, AND FINANCING ACTIVITIES

Explanation of Transaction and Balance Sheet Effect	Amount
Total	

LEA : 113382303 Eastern Lebanon County SD

Printed 11/26/2024 10:25:29 AM

Amounts Expressed in Whole Dollars		<u>Private Purpose Trust</u> <u>(71)</u>	<u>Investment Trust</u> <u>(72)</u>	<u>Pension Trust</u> <u>(73)</u>	<u>Student Activity Custodial</u> <u>(81)</u>
Assets And Deferred Outflows Of Resources					
Assets					
0100	Cash and Cash Equivalents	14,206			245,358
0110	Investments	91,424			
0130	Due From Other Funds				
0140	Due from Other Governments, Primary Government and Component Units				
0150	Other Receivables				
0170	Inventories				
0180	Prepaid Expenses (Expenditures)				
0190	Other Current Assets				
0220	Buildings and Building Improvements (Net)				
0230	Tangible Property and Intangible Right-To-Use Assets (Net)				
Total Assets		\$105,630			\$245,358
0910	Deferred Outflows of Resources				
Total Assets And Deferred Outflows Of Resources		\$105,630			\$245,358

LEA : 113382303 Eastern Lebanon County SD

Printed 11/26/2024 10:25:29 AM

Amounts Expressed in Whole Dollars		<u>Other Custodial</u> <u>(89)</u>	<u>Fiduciary Component Units</u> <u>(98)</u>	<u>Total Fiduciary Funds</u>
Assets And Deferred Outflows Of Resources				
Assets				
0100	Cash and Cash Equivalents			259,564
0110	Investments			91,424
0130	Due From Other Funds			
0140	Due from Other Governments, Primary Government and Component Units			
0150	Other Receivables			
0170	Inventories			
0180	Prepaid Expenses (Expenditures)			
0190	Other Current Assets			
0220	Buildings and Building Improvements (Net)			
0230	Tangible Property and Intangible Right-To-Use Assets (Net)			
Total Assets				\$350,988
0910	Deferred Outflows of Resources			
Total Assets And Deferred Outflows Of Resources				\$350,988

LEA : 113382303 Eastern Lebanon County SD

Printed 11/26/2024 10:25:29 AM

Amounts Expressed in Whole Dollars	<u>Private Purpose Trust</u> (71)	<u>Investment Trust</u> (72)	<u>Pension Trust</u> (73)	<u>Student Activity Custodial</u> (81)
Liabilities, Deferred Inflows Of Resources And Net Position				
Liabilities				
0400 Due to Other Funds				
0410 Due to Other Governments, Primary Government and Component Units				
0420 Accounts Payable				
0430 Contracts Payable				
0450 Short-Term Payables				
0460 Payroll Accruals and Withholdings				
0480 Unearned Revenues				
0490 Other Current Liabilities				
Total Liabilities				
0950 Deferred Inflows of Resources				
Net Position				
0791 Net Investment in Capital Assets				
0009 Restricted Net Position (0792 – 0798)	105,630			245,358
0799 Unrestricted Net Position				
Total Net Position	\$105,630			\$245,358
Total Liabilities, Deferred Inflows Of Resources And Net Position	\$105,630			\$245,358

LEA : 113382303 Eastern Lebanon County SD

Printed 11/26/2024 10:25:29 AM

Amounts Expressed in Whole Dollars		<u>Other Custodial</u> <u>(89)</u>	<u>Fiduciary Component Units</u> <u>(98)</u>	<u>Total Fiduciary Funds</u>
Liabilities, Deferred Inflows Of Resources And Net Position				
Liabilities				
0400	Due to Other Funds			
0410	Due to Other Governments, Primary Government and Component Units			
0420	Accounts Payable			
0430	Contracts Payable			
0450	Short-Term Payables			
0460	Payroll Accruals and Withholdings			
0480	Unearned Revenues			
0490	Other Current Liabilities			
Total Liabilities				
0950	Deferred Inflows of Resources			
Net Position				
0791	Net Investment in Capital Assets			
0009	Restricted Net Position (0792 – 0798)			350,988
0799	Unrestricted Net Position			
Total Net Position				\$350,988
Total Liabilities, Deferred Inflows Of Resources And Net Position				\$350,988

LEA : 113382303 Eastern Lebanon County SD

Printed 11/26/2024 10:25:31 AM

Amounts Expressed in Whole Dollars	<u>Private Purpose Trust</u> <u>(71)</u>	<u>Investment Trust</u> <u>(72)</u>	<u>Pension Trust</u> <u>(73)</u>	<u>Student Activity</u> <u>Custodial</u> <u>(81)</u>	<u>Other Custodial</u> <u>(89)</u>	<u>Fiduciary Component</u> <u>Units</u> <u>(98)</u>
Additions						
0091 Gifts and Contributions	1,035			192,700		
0095 Net Investment Earnings	4,725					
0092 Other Additions						
Deductions						
0093 Scholarships Awarded						
0094 Other Deductions				139,061		
Change In Net Position	\$5,760			\$53,639		
0006 Net Position – Beginning of Fiscal Year	99,870			191,719		
0007 Net Position Held in Trust for Pension Benefits						
Net Position - End of Fiscal Year	\$105,630			\$245,358		

LEA : 113382303 Eastern Lebanon County SD

Printed 11/26/2024 10:25:31 AM

Amounts Expressed in Whole Dollars		<u>Total Fiduciary</u> <u>Funds</u>
Additions		
0091	Gifts and Contributions	193,735
0095	Net Investment Earnings	4,725
0092	Other Additions	
Deductions		
0093	Scholarships Awarded	
0094	Other Deductions	139,061
Change In Net Position		\$59,399
0006	Net Position – Beginning of Fiscal Year	291,589
0007	Net Position Held in Trust for Pension Benefits	
Net Position - End of Fiscal Year		\$350,988

	Revenue Reported In Current Year	Current Year Tax Accrual	Prior Year Tax Accrual	Taxes Collected In Current Year
Revenue from Local Sources				
6111 Current Real Estate Taxes	28,480,159.49			28,480,159.49
6112 Interim Real Estate Taxes	102,612.97			102,612.97
6113 Public Utility Realty Taxes	27,664.07			27,664.07
6114 Payments in Lieu of Current Taxes - State / Local	3,253.45			3,253.45
6151 Current Act 511 Earned Income Taxes	3,309,702.74			3,309,702.74
6153 Current Act 511 Real Estate Transfer Taxes	422,837.19			422,837.19
6411 Delinquent Real Estate Taxes	759,442.37			759,442.37
6420 Delinquent Per Capita Taxes, Section 679	149.75			149.75
6440 Delinquent Local Enabling Taxes - Flat Rate Assessments	149.75			149.75
6500 Earnings on Investments	848,048.32			
6700 Revenues from LEA Activities	78,808.85			
6831 Federal Revenue Received from Other Pennsylvania Public LEAs	16,236.94			
6832 Federal IDEA Revenue Received as Pass Through	539,748.88			
6910 Rentals	5,318.75			
6942 Summer School Tuition	6,980.00			
6944 Receipts from Other LEAs in Pennsylvania - Education	479,487.49			
6991 Refunds of a Prior Year Expenditure	111,156.57			
6992 Energy Efficiency Revenues and Incentives	189.60			
6999 Other Revenues Not Specified Above	330,731.19			
TOTAL Revenue from Local Sources	\$35,522,678.37			\$33,105,971.78

	Revenue Reported In Current Year			
<u>Revenue from State Sources</u>				
7111 Basic Education Funding-Formula	6,168,591.81			
7160 Tuition for Orphans Subsidy	131,500.35			
7220 Vocational Education	42,241.50			
7271 Special Education funds for School-Aged Pupils	1,526,213.48			
7311 Pupil Transportation Subsidy	1,567,093.94			
7312 Nonpublic and Charter School Pupil Transportation Subsidy	35,420.00			
7320 Rental and Sinking Fund Payments / Building Reimbursement Subsidy	358,118.31			
7330 Health Services (Medical, Dental, Nurse, Act 25)	36,885.24			
7340 State Property Tax Reduction Allocation	586,146.72			
7362 School Mental Health & Safety and Security Grants	203,529.91			
7505 Ready to Learn Block Grant	258,521.00			
7599 Other State Revenue Not Listed Elsewhere in the 7000 Series	4,080.00			
7810 State Share of Social Security and Medicare Taxes	761,482.63			
7820 State Share of Retirement Contributions	3,919,228.77			
TOTAL Revenue from State Sources	\$15,599,053.66			

	Revenue Reported In Current Year			
<u>Revenue from Federal Sources</u>				
8514 Title I - Improving the Academic Achievement of the Disadvantaged	504,304.00			
8515 Title II - Preparing, Training, and Recruiting High Quality Teachers and Principals	73,963.00			
8517 Title IV - 21st Century Schools	42,070.00			
8690 Other Restricted Federal Grants-in-Aid Through the Commonwealth of PA	103,875.75			
8743 ESSER II - Elementary and Secondary School Emergency Relief Fund	(1.60)			
8744 ARP ESSER - Elementary and Secondary School Emergency Relief Fund	864,405.31			
8751 ARP ESSER Learning Loss	87,763.94			
8752 ARP ESSER Summer Programs	13,356.23			
8753 ARP ESSER Afterschool Programs	21,283.42			
8810 School-Based Access Medicaid Reimbursement Program (SBAP) Reimbursements (Access)	62,255.08			
8820 Medical Assistance Reimbursement for Administrative Claiming (Quarterly) Program	854.37			
TOTAL Revenue from Federal Sources	\$1,774,129.50			

	Revenue Reported In Current Year	
<u>Other Financing Sources</u>		
9400 Sale of or Compensation for Loss of Fixed Assets	3,301.02	
TOTAL Other Financing Sources	\$3,301.02	
TOTAL FROM ALL SOURCES	\$52,899,162.55	\$33,105,971.78

LEA : 113382303 Eastern Lebanon County SD

Printed 11/26/2024 10:25:34 AM

	<u>General Fund (10)</u>	<u>Student Sponsored Activity Fund (21)</u>	<u>Public Purpose Trust (27)</u>	<u>Other Compt Approved (28)</u>	<u>Athletic / Activity (29)</u>	<u>Capital Reserve (690, 1850) (31)</u>
6000 Revenue from Local Sources						
6111 Current Real Estate Taxes	28,480,159.49					
6112 Interim Real Estate Taxes	102,612.97					
6113 Public Utility Realty Taxes	27,664.07					
6114 Payments in Lieu of Current Taxes - State / Local	3,253.45					
6151 Current Act 511 Earned Income Taxes	3,309,702.74					
6153 Current Act 511 Real Estate Transfer Taxes	422,837.19					
6411 Delinquent Real Estate Taxes	759,442.37					
6420 Delinquent Per Capita Taxes, Section 679	149.75					
6440 Delinquent Local Enabling Taxes - Flat Rate Assessments	149.75					
6500 Earnings on Investments	848,048.32					
6700 Revenues from LEA Activities	78,808.85					
6831 Federal Revenue Received from Other Pennsylvania Public LEAs	16,236.94					
6832 Federal IDEA Revenue Received as Pass Through	539,748.88					
6910 Rentals	5,318.75					
6942 Summer School Tuition	6,980.00					
6944 Receipts from Other LEAs in Pennsylvania - Education	479,487.49					
6991 Refunds of a Prior Year Expenditure	111,156.57					
6992 Energy Efficiency Revenues and Incentives	189.60					
6999 Other Revenues Not Specified Above	330,731.19					
6000 Total Revenue from Local Sources	\$35,522,678.37					
7000 Revenue from State Sources						
7111 Basic Education Funding-Formula	6,168,591.81					
7160 Tuition for Orphans Subsidy	131,500.35					
7220 Vocational Education	42,241.50					
7271 Special Education funds for School-Aged Pupils	1,526,213.48					
7311 Pupil Transportation Subsidy	1,567,093.94					
7312 Nonpublic and Charter School Pupil Transportation Subsidy	35,420.00					
7320 Rental and Sinking Fund Payments / Building Reimbursement Subsidy	358,118.31					
7330 Health Services (Medical, Dental, Nurse, Act 25)	36,885.24					
7340 State Property Tax Reduction Allocation	586,146.72					
7362 School Mental Health & Safety and Security Grants	203,529.91					
7505 Ready to Learn Block Grant	258,521.00					
7599 Other State Revenue Not Listed Elsewhere in the 7000 Series	4,080.00					
7810 State Share of Social Security and Medicare Taxes	761,482.63					

LEA : 113382303 Eastern Lebanon County SD

Printed 11/26/2024 10:25:34 AM

	<u>Capital Reserve</u> <u>(1431) (32)</u>	<u>Other Capital</u> <u>Projects Fund (39)</u>	<u>Debt Service (40)</u>	<u>Permanent (90)</u>	<u>Total</u>
6000 Revenue from Local Sources					
6111 Current Real Estate Taxes					28,480,159.49
6112 Interim Real Estate Taxes					102,612.97
6113 Public Utility Realty Taxes					27,664.07
6114 Payments in Lieu of Current Taxes - State / Local					3,253.45
6151 Current Act 511 Earned Income Taxes					3,309,702.74
6153 Current Act 511 Real Estate Transfer Taxes					422,837.19
6411 Delinquent Real Estate Taxes					759,442.37
6420 Delinquent Per Capita Taxes, Section 679					149.75
6440 Delinquent Local Enabling Taxes - Flat Rate Assessments					149.75
6500 Earnings on Investments	17,814.33	496,313.39			1,362,176.04
6700 Revenues from LEA Activities					78,808.85
6831 Federal Revenue Received from Other Pennsylvania Public LEAs					16,236.94
6832 Federal IDEA Revenue Received as Pass Through					539,748.88
6910 Rentals					5,318.75
6942 Summer School Tuition					6,980.00
6944 Receipts from Other LEAs in Pennsylvania - Education					479,487.49
6991 Refunds of a Prior Year Expenditure					111,156.57
6992 Energy Efficiency Revenues and Incentives					189.60
6999 Other Revenues Not Specified Above					330,731.19
6000 Total Revenue from Local Sources	\$17,814.33	\$496,313.39			\$36,036,806.09
7000 Revenue from State Sources					
7111 Basic Education Funding-Formula					6,168,591.81
7160 Tuition for Orphans Subsidy					131,500.35
7220 Vocational Education					42,241.50
7271 Special Education funds for School-Aged Pupils					1,526,213.48
7311 Pupil Transportation Subsidy					1,567,093.94
7312 Nonpublic and Charter School Pupil Transportation Subsidy					35,420.00
7320 Rental and Sinking Fund Payments / Building Reimbursement Subsidy					358,118.31
7330 Health Services (Medical, Dental, Nurse, Act 25)					36,885.24
7340 State Property Tax Reduction Allocation					586,146.72
7362 School Mental Health & Safety and Security Grants					203,529.91
7505 Ready to Learn Block Grant					258,521.00
7599 Other State Revenue Not Listed Elsewhere in the 7000 Series					4,080.00
7810 State Share of Social Security and Medicare Taxes					761,482.63

LEA : 113382303 Eastern Lebanon County SD

Printed 11/26/2024 10:25:34 AM

	<u>General Fund (10)</u>	<u>Student Sponsored Activity Fund (21)</u>	<u>Public Purpose Trust (27)</u>	<u>Other Compt Approved (28)</u>	<u>Athletic / Activity (29)</u>	<u>Capital Reserve (690, 1850) (31)</u>
7000 Revenue from State Sources						
7820 State Share of Retirement Contributions	3,919,228.77					
7000 Total Revenue from State Sources	\$15,599,053.66					
8000 Revenue from Federal Sources						
8514 Title I - Improving the Academic Achievement of the Disadvantaged	504,304.00					
8515 Title II - Preparing, Training, and Recruiting High Quality Teachers and Principals	73,963.00					
8517 Title IV - 21st Century Schools	42,070.00					
8690 Other Restricted Federal Grants-in-Aid Through the Commonwealth of PA	103,875.75					
8743 ESSER II - Elementary and Secondary School Emergency Relief Fund	(1.60)					
8744 ARP ESSER - Elementary and Secondary School Emergency Relief Fund	864,405.31					
8751 ARP ESSER Learning Loss	87,763.94					
8752 ARP ESSER Summer Programs	13,356.23					
8753 ARP ESSER Afterschool Programs	21,283.42					
8810 School-Based Access Medicaid Reimbursement Program (SBAP) Reimbursements (Access)	62,255.08					
8820 Medical Assistance Reimbursement for Administrative Claiming (Quarterly) Program	854.37					
8000 Total Revenue from Federal Sources	\$1,774,129.50					
9000 Other Financing Sources						
9110 Face Value of Bonds Issued						
9130 Bond Premiums						
9310 General Fund Transfers						
9400 Sale of or Compensation for Loss of Fixed Assets	3,301.02					
9000 Total Other Financing Sources	\$3,301.02					
Total From All Sources	\$52,899,162.55					

LEA : 113382303 Eastern Lebanon County SD

Printed 11/26/2024 10:25:34 AM

	<u>Capital Reserve</u> <u>(1431) (32)</u>	<u>Other Capital</u> <u>Projects Fund (39)</u>	<u>Debt Service (40)</u>	<u>Permanent (90)</u>	<u>Total</u>
7000 Revenue from State Sources					
7820 State Share of Retirement Contributions					3,919,228.77
7000 Total Revenue from State Sources					\$15,599,053.66
8000 Revenue from Federal Sources					
8514 Title I - Improving the Academic Achievement of the Disadvantaged					504,304.00
8515 Title II - Preparing, Training, and Recruiting High Quality Teachers and Principals					73,963.00
8517 Title IV - 21st Century Schools					42,070.00
8690 Other Restricted Federal Grants-in-Aid Through the Commonwealth of PA					103,875.75
8743 ESSER II - Elementary and Secondary School Emergency Relief Fund					(1.60)
8744 ARP ESSER - Elementary and Secondary School Emergency Relief Fund					864,405.31
8751 ARP ESSER Learning Loss					87,763.94
8752 ARP ESSER Summer Programs					13,356.23
8753 ARP ESSER Afterschool Programs					21,283.42
8810 School-Based Access Medicaid Reimbursement Program (SBAP) Reimbursements (Access)					62,255.08
8820 Medical Assistance Reimbursement for Administrative Claiming (Quarterly) Program					854.37
8000 Total Revenue from Federal Sources					\$1,774,129.50
9000 Other Financing Sources					
9110 Face Value of Bonds Issued		13,775,000.00			13,775,000.00
9130 Bond Premiums		1,152,084.60			1,152,084.60
9310 General Fund Transfers	550,000.00		5,109,583.46		5,659,583.46
9400 Sale of or Compensation for Loss of Fixed Assets					3,301.02
9000 Total Other Financing Sources	\$550,000.00	\$14,927,084.60	\$5,109,583.46		\$20,589,969.08
Total From All Sources	\$567,814.33	\$15,423,397.99	\$5,109,583.46		\$73,999,958.33

LEA : 113382303 Eastern Lebanon County SD

Printed 11/26/2024 10:25:36 AM

	<u>General Fund (10)</u>	<u>Student Sponsored Activity Fund (21)</u>	<u>Public Purpose Trust (27)</u>	<u>Other Compt Approved (28)</u>	<u>Athletic / Activity (29)</u>	<u>Capital Reserve (690. 1850) (31)</u>
Revenue from Local Sources	35,522,678.37					
Revenue from State Sources	15,599,053.66					
Revenue from Federal Sources	1,774,129.50					
Other Financing Sources	3,301.02					
Total From All Sources	\$52,899,162.55					

LEA : 113382303 Eastern Lebanon County SD

Printed 11/26/2024 10:25:36 AM

	<u>Capital Reserve (1431)</u> <u>(32)</u>	<u>Other Capital Projects</u> <u>Fund (39)</u>	<u>Debt Service (40)</u>	<u>Permanent (90)</u>	<u>Total</u>
Revenue from Local Sources	17,814.33	496,313.39			36,036,806.09
Revenue from State Sources					15,599,053.66
Revenue from Federal Sources					1,774,129.50
Other Financing Sources	550,000.00	14,927,084.60	5,109,583.46		20,589,969.08
Total From All Sources	\$567,814.33	\$15,423,397.99	\$5,109,583.46		\$73,999,958.33

LEA : 113382303 Eastern Lebanon County SD

Printed 11/26/2024 10:25:39 AM

General Fund (10)

1000 Instruction		Total
100	<u>Personnel Services – Salaries</u>	
100	Personnel Services – Salaries	15,448,955.39
Total Personnel Services – Salaries		\$15,448,955.39
200	<u>Personnel Services – Employee Benefits</u>	
210	Group Insurance – Contracted Provider	27,512.25
220	Social Security Contributions	1,137,412.53
230	PSERS Retirement Contributions	5,205,158.93
260	Workers' Compensation	79,127.45
270	Group Insurance – Self-Insurance	3,311,786.89
299	All Other Employee Benefits	32,029.70
Total Personnel Services – Employee Benefits		\$9,793,027.75
300	<u>Purchased Professional and Technical Services</u>	
322	Professional Educational Services – Ius	1,497,154.14
323	Professional Educational Services – Other Educational Agencies	455,271.62
330	Other Professional Services	32,630.00
340	Technical Services	780.00
390	Other Purchased Professional and Technical Services	8,938.72
Total Purchased Professional and Technical Services		\$1,994,774.48
400	<u>Purchased Property Services</u>	
410	Cleaning Services	1,265.05
430	Repairs and Maintenance Services	6,806.31
440	Rentals	32,556.22
Total Purchased Property Services		\$40,627.58
500	<u>Other Purchased Services</u>	
510	Student Transportation Services	19,546.64
530	Communications	23.96
561	Tuition To Other School Districts Within the State	195,449.85
562	Tuition To Pennsylvania Charter Schools	1,724,284.45
563	Tuition To Nonpublic Schools	141,319.50
564	Tuition To Career and Technology Centers	994,999.00
580	Travel	11,142.88
594	IU Payment By Withholding for Institutionalized Children's Programs – Special Classes	867.02
599	Other Miscellaneous Purchased Services	58.54
Total Other Purchased Services		\$3,087,691.84
600	<u>Supplies</u>	
610	General Supplies	449,649.93
630	Food	2,213.30
640	Books and Periodicals	13,783.83
650	Supplies & Fees – Technology Related	116,987.77
Total Supplies		\$582,634.83
700	<u>Property</u>	
752	Capital Equipment – Original and Additional	44,998.79
Total Property		\$44,998.79

LEA : 113382303 Eastern Lebanon County SD

Printed 11/26/2024 10:25:39 AM

General Fund (10)		
1000 Instruction		<u>Total</u>
800 <u>Other Objects</u>		
810 Dues and Fees		24,208.14
Total Other Objects		\$24,208.14
Total 1000 Instruction		\$31,016,918.80

LEA : 113382303 Eastern Lebanon County SD

Printed 11/26/2024 10:25:39 AM

General Fund (10)

1100 Regular Programs – Elementary / Secondary

	Elementary	Secondary	Federal	Total
100 Personnel Services – Salaries				
100 Personnel Services – Salaries	5,792,639.03	5,269,077.51	904,596.04	11,966,312.58
Total Personnel Services – Salaries	\$5,792,639.03	\$5,269,077.51	\$904,596.04	\$11,966,312.58
200 Personnel Services – Employee Benefits				
210 Group Insurance – Contracted Provider	11,807.25	9,565.12	11.76	21,384.13
220 Social Security Contributions	442,245.71	378,988.10	57,808.60	879,042.41
230 PSERS Retirement Contributions	2,054,281.12	1,745,003.77	238,629.08	4,037,913.97
260 Workers' Compensation	29,086.90	28,841.49	3,355.09	61,283.48
270 Group Insurance – Self-Insurance	1,459,908.81	1,252,641.55	42,635.70	2,755,186.06
299 All Other Employee Benefits	23,970.11	4,895.79	6.40	28,872.30
Total Personnel Services – Employee Benefits	\$4,021,299.90	\$3,419,935.82	\$342,446.63	\$7,783,682.35
300 Purchased Professional and Technical Services				
322 Professional Educational Services – Ius		27,312.50		27,312.50
323 Professional Educational Services – Other Educational Agencies	3,940.16	32,655.67		36,595.83
330 Other Professional Services	867.90	31,762.10		32,630.00
340 Technical Services		780.00		780.00
390 Other Purchased Professional and Technical Services		504.00		504.00
Total Purchased Professional and Technical Services	\$4,808.06	\$93,014.27		\$97,822.33
400 Purchased Property Services				
410 Cleaning Services		1,265.05		1,265.05
430 Repairs and Maintenance Services	1,403.80	5,402.51		6,806.31
440 Rentals	23,698.29	8,857.93		32,556.22
Total Purchased Property Services	\$25,102.09	\$15,525.49		\$40,627.58
500 Other Purchased Services				
510 Student Transportation Services	13,430.64	4,178.07		17,608.71
530 Communications		23.96		23.96
561 Tuition To Other School Districts Within the State		104,544.80		104,544.80
562 Tuition To Pennsylvania Charter Schools	347,725.78	720,305.86		1,068,031.64
580 Travel	1,787.39	4,622.08		6,409.47
Total Other Purchased Services	\$362,943.81	\$833,674.77		\$1,196,618.58
600 Supplies				
610 General Supplies	220,774.37	178,632.28	17,780.63	417,187.28
630 Food	1,152.27	1,061.03		2,213.30
640 Books and Periodicals	7,155.97	3,550.18		10,706.15
650 Supplies & Fees – Technology Related	25,568.33	56,436.80	32,290.74	114,295.87
Total Supplies	\$254,650.94	\$239,680.29	\$50,071.37	\$544,402.60
700 Property				
752 Capital Equipment – Original and Additional	1,660.67	43,338.12		44,998.79
Total Property	\$1,660.67	\$43,338.12		\$44,998.79
800 Other Objects				
810 Dues and Fees	5,806.11	11,864.79		17,670.90

LEA : 113382303 Eastern Lebanon County SD

Printed 11/26/2024 10:25:39 AM

General Fund (10)

1100 Regular Programs – Elementary / Secondary

	<u>Elementary</u>	<u>Secondary</u>	<u>Federal</u>	<u>Total</u>
Total Other Objects	\$5,806.11	\$11,864.79		\$17,670.90
Total 1100 Regular Programs – Elementary / Secondary	\$10,468,910.61	\$9,926,111.06	\$1,297,114.04	\$21,692,135.71

LEA : 113382303 Eastern Lebanon County SD

Printed 11/26/2024 10:25:39 AM

General Fund (10)

1110 Regular Programs

	Elementary	Secondary	Federal	Total
100 <u>Personnel Services – Salaries</u>				
100 Personnel Services – Salaries	5,792,639.03	5,269,077.51	417,358.54	11,479,075.08
Total Personnel Services – Salaries	\$5,792,639.03	\$5,269,077.51	\$417,358.54	\$11,479,075.08
200 <u>Personnel Services – Employee Benefits</u>				
210 Group Insurance – Contracted Provider	11,807.25	9,565.12	11.76	21,384.13
220 Social Security Contributions	442,245.71	378,988.10	37,547.80	858,781.61
230 PSERS Retirement Contributions	2,054,281.12	1,745,003.77	168,008.56	3,967,293.45
260 Workers' Compensation	29,086.90	28,841.49		57,928.39
270 Group Insurance – Self-Insurance	1,459,908.81	1,252,641.55	1,936.43	2,714,486.79
299 All Other Employee Benefits	23,970.11	4,895.79	6.40	28,872.30
Total Personnel Services – Employee Benefits	\$4,021,299.90	\$3,419,935.82	\$207,510.95	\$7,648,746.67
300 <u>Purchased Professional and Technical Services</u>				
322 Professional Educational Services – Ius		27,312.50		27,312.50
323 Professional Educational Services – Other Educational Agencies	3,940.16	32,655.67		36,595.83
330 Other Professional Services	867.90	31,762.10		32,630.00
340 Technical Services		780.00		780.00
390 Other Purchased Professional and Technical Services		504.00		504.00
Total Purchased Professional and Technical Services	\$4,808.06	\$93,014.27		\$97,822.33
400 <u>Purchased Property Services</u>				
410 Cleaning Services		1,265.05		1,265.05
430 Repairs and Maintenance Services	1,403.80	5,402.51		6,806.31
440 Rentals	23,698.29	8,857.93		32,556.22
Total Purchased Property Services	\$25,102.09	\$15,525.49		\$40,627.58
500 <u>Other Purchased Services</u>				
510 Student Transportation Services	13,430.64	4,178.07		17,608.71
530 Communications		23.96		23.96
561 Tuition To Other School Districts Within the State		104,544.80		104,544.80
562 Tuition To Pennsylvania Charter Schools	347,725.78	720,305.86		1,068,031.64
580 Travel	1,787.39	4,622.08		6,409.47
Total Other Purchased Services	\$362,943.81	\$833,674.77		\$1,196,618.58
600 <u>Supplies</u>				
610 General Supplies	220,774.37	178,632.28	7,496.70	406,903.35
630 Food	1,152.27	1,061.03		2,213.30
640 Books and Periodicals	7,155.97	3,550.18		10,706.15
650 Supplies & Fees – Technology Related	25,568.33	56,436.80	29,796.94	111,802.07
Total Supplies	\$254,650.94	\$239,680.29	\$37,293.64	\$531,624.87
700 <u>Property</u>				
752 Capital Equipment – Original and Additional	1,660.67	43,338.12		44,998.79
Total Property	\$1,660.67	\$43,338.12		\$44,998.79
800 <u>Other Objects</u>				
810 Dues and Fees	5,806.11	11,864.79		17,670.90

LEA : 113382303 Eastern Lebanon County SD

Printed 11/26/2024 10:25:39 AM

General Fund (10)

1110 Regular Programs

	<u>Elementary</u>	<u>Secondary</u>	<u>Federal</u>	<u>Total</u>
Total Other Objects	\$5,806.11	\$11,864.79		\$17,670.90
Total 1110 Regular Programs	\$10,468,910.61	\$9,926,111.06	\$662,163.13	\$21,057,184.80

LEA : 113382303 Eastern Lebanon County SD

Printed 11/26/2024 10:25:39 AM

General Fund (10)

1190 Federally-Funded Regular Programs	<u>Elementary</u>	<u>Secondary</u>	<u>Federal</u>	<u>Total</u>
100 <u>Personnel Services – Salaries</u>				
100 Personnel Services – Salaries			487,237.50	487,237.50
Total Personnel Services – Salaries			\$487,237.50	\$487,237.50
200 <u>Personnel Services – Employee Benefits</u>				
220 Social Security Contributions			20,260.80	20,260.80
230 PSERS Retirement Contributions			70,620.52	70,620.52
260 Workers’ Compensation			3,355.09	3,355.09
270 Group Insurance – Self-Insurance			40,699.27	40,699.27
Total Personnel Services – Employee Benefits			\$134,935.68	\$134,935.68
600 <u>Supplies</u>				
610 General Supplies			10,283.93	10,283.93
650 Supplies & Fees – Technology Related			2,493.80	2,493.80
Total Supplies			\$12,777.73	\$12,777.73
Total 1190 Federally-Funded Regular Programs			\$634,950.91	\$634,950.91

LEA : 113382303 Eastern Lebanon County SD

Printed 11/26/2024 10:25:39 AM

General Fund (10)

1200 Special Programs – Elementary / Secondary

	Elementary	Secondary	Federal	Total
100 Personnel Services – Salaries				
100 Personnel Services – Salaries	1,897,088.10	1,305,267.52		3,202,355.62
Total Personnel Services – Salaries	\$1,897,088.10	\$1,305,267.52		\$3,202,355.62
200 Personnel Services – Employee Benefits				
210 Group Insurance – Contracted Provider	3,533.40	2,169.52		5,702.92
220 Social Security Contributions	140,654.03	95,557.43		236,211.46
230 PSERS Retirement Contributions	632,495.35	434,749.50		1,067,244.85
260 Workers' Compensation	8,368.01	8,039.86		16,407.87
270 Group Insurance – Self-Insurance	324,322.38	206,318.66		530,641.04
299 All Other Employee Benefits	2,680.79	419.01		3,099.80
Total Personnel Services – Employee Benefits	\$1,112,053.96	\$747,253.98		\$1,859,307.94
300 Purchased Professional and Technical Services				
322 Professional Educational Services – Ius	709,557.52	552,894.24	207,389.88	1,469,841.64
323 Professional Educational Services – Other Educational Agencies	207,912.25	210,763.54		418,675.79
390 Other Purchased Professional and Technical Services	265.75	184.25		450.00
Total Purchased Professional and Technical Services	\$917,735.52	\$763,842.03	\$207,389.88	\$1,888,967.43
500 Other Purchased Services				
510 Student Transportation Services	466.75	749.13		1,215.88
561 Tuition To Other School Districts Within the State		82,054.45		82,054.45
562 Tuition To Pennsylvania Charter Schools	139,075.27	517,177.54		656,252.81
563 Tuition To Nonpublic Schools	520.00	140,799.50		141,319.50
580 Travel	2,251.00	682.69		2,933.69
594 IU Payment By Withholding for Institutionalized Children's Programs – Special Classes	442.18	424.84		867.02
599 Other Miscellaneous Purchased Services	58.54			58.54
Total Other Purchased Services	\$142,813.74	\$741,888.15		\$884,701.89
600 Supplies				
610 General Supplies	6,657.79	974.68	8,959.80	16,592.27
640 Books and Periodicals	1,399.07	1,678.61		3,077.68
650 Supplies & Fees – Technology Related	753.90	1,938.00		2,691.90
Total Supplies	\$8,810.76	\$4,591.29	\$8,959.80	\$22,361.85
800 Other Objects				
810 Dues and Fees	2,422.02	2,145.22		4,567.24
Total Other Objects	\$2,422.02	\$2,145.22		\$4,567.24
Total 1200 Special Programs – Elementary / Secondary	\$4,080,924.10	\$3,564,988.19	\$216,349.68	\$7,862,261.97

LEA : 113382303 Eastern Lebanon County SD

Printed 11/26/2024 10:25:39 AM

General Fund (10)

1210 Life Skills Support

	<u>Elementary</u>	<u>Secondary</u>	<u>Federal</u>	<u>Total</u>
100 <u>Personnel Services – Salaries</u>				
100 Personnel Services – Salaries	375,731.49	4,440.00		380,171.49
Total Personnel Services – Salaries	\$375,731.49	\$4,440.00		\$380,171.49
200 <u>Personnel Services – Employee Benefits</u>				
210 Group Insurance – Contracted Provider	839.32	10.71	(199.40)	650.63
220 Social Security Contributions	28,212.25	339.67		28,551.92
230 PSERS Retirement Contributions	125,419.66			125,419.66
260 Workers' Compensation	993.42	954.46		1,947.88
270 Group Insurance – Self-Insurance	44,624.14	513.72		45,137.86
299 All Other Employee Benefits	2,071.00	4.80		2,075.80
Total Personnel Services – Employee Benefits	\$202,159.79	\$1,823.36	(\$199.40)	\$203,783.75
500 <u>Other Purchased Services</u>				
599 Other Miscellaneous Purchased Services	58.54			58.54
Total Other Purchased Services	\$58.54			\$58.54
600 <u>Supplies</u>				
610 General Supplies	1,920.87	1,243.92	3,344.00	6,508.79
640 Books and Periodicals	459.98	90.52		550.50
650 Supplies & Fees – Technology Related	108.18	1,070.66		1,178.84
Total Supplies	\$2,489.03	\$2,405.10	\$3,344.00	\$8,238.13
800 <u>Other Objects</u>				
810 Dues and Fees	47.25			47.25
Total Other Objects	\$47.25			\$47.25
Total 1210 Life Skills Support	\$580,486.10	\$8,668.46	\$3,144.60	\$592,299.16

LEA : 113382303 Eastern Lebanon County SD

Printed 11/26/2024 10:25:39 AM

General Fund (10)

1220 Sensory Support	Elementary	Secondary	Federal	Total
100 <u>Personnel Services – Salaries</u>				
100 Personnel Services – Salaries	181,991.50	57,631.00		239,622.50
Total Personnel Services – Salaries	\$181,991.50	\$57,631.00		\$239,622.50
200 <u>Personnel Services – Employee Benefits</u>				
210 Group Insurance – Contracted Provider	323.60	123.10		446.70
220 Social Security Contributions	13,438.44	4,099.78		17,538.22
230 PSERS Retirement Contributions	61,877.05	19,594.59		81,471.64
260 Workers' Compensation	626.15	601.60		1,227.75
270 Group Insurance – Self-Insurance	28,561.62	16,193.82		44,755.44
299 All Other Employee Benefits	38.40	19.20		57.60
Total Personnel Services – Employee Benefits	\$104,865.26	\$40,632.09		\$145,497.35
500 <u>Other Purchased Services</u>				
580 Travel	282.29	72.71		355.00
Total Other Purchased Services	\$282.29	\$72.71		\$355.00
600 <u>Supplies</u>				
610 General Supplies	357.52	178.24		535.76
Total Supplies	\$357.52	\$178.24		\$535.76
Total 1220 Sensory Support	\$287,496.57	\$98,514.04		\$386,010.61

LEA : 113382303 Eastern Lebanon County SD

Printed 11/26/2024 10:25:39 AM

General Fund (10)

1230 Emotional Support

	Elementary	Secondary	Federal	Total
100 <u>Personnel Services – Salaries</u>				
100 Personnel Services – Salaries	578,080.84	337,398.68		915,479.52
Total Personnel Services – Salaries	\$578,080.84	\$337,398.68		\$915,479.52
200 <u>Personnel Services – Employee Benefits</u>				
210 Group Insurance – Contracted Provider	887.68	500.98	199.40	1,588.06
220 Social Security Contributions	42,954.83	25,071.44		68,026.27
230 PSERS Retirement Contributions	191,100.80	113,410.02		304,510.82
260 Workers' Compensation	2,392.22	2,298.41		4,690.63
270 Group Insurance – Self-Insurance	103,325.79	45,321.91		148,647.70
299 All Other Employee Benefits	318.40	118.40		436.80
Total Personnel Services – Employee Benefits	\$340,979.72	\$186,721.16	\$199.40	\$527,900.28
300 <u>Purchased Professional and Technical Services</u>				
323 Professional Educational Services – Other Educational Agencies	206,626.00	210,124.79		416,750.79
390 Other Purchased Professional and Technical Services	265.75	184.25		450.00
Total Purchased Professional and Technical Services	\$206,891.75	\$210,309.04		\$417,200.79
500 <u>Other Purchased Services</u>				
561 Tuition To Other School Districts Within the State		14,895.02		14,895.02
580 Travel	1,464.67			1,464.67
Total Other Purchased Services	\$1,464.67	\$14,895.02		\$16,359.69
600 <u>Supplies</u>				
610 General Supplies	3,025.28	(1,847.74)	5,262.97	6,440.51
640 Books and Periodicals	172.32	504.99		677.31
650 Supplies & Fees – Technology Related	599.99			599.99
Total Supplies	\$3,797.59	(\$1,342.75)	\$5,262.97	\$7,717.81
800 <u>Other Objects</u>				
810 Dues and Fees	375.00			375.00
Total Other Objects	\$375.00			\$375.00
Total 1230 Emotional Support	\$1,131,589.57	\$747,981.15	\$5,462.37	\$1,885,033.09

LEA : 113382303 Eastern Lebanon County SD

Printed 11/26/2024 10:25:39 AM

General Fund (10)

1240 Academic Support

	Elementary	Secondary	Federal	Total
100 <u>Personnel Services – Salaries</u>				
100 Personnel Services – Salaries	761,284.27	905,797.84		1,667,082.11
Total Personnel Services – Salaries	\$761,284.27	\$905,797.84		\$1,667,082.11
200 <u>Personnel Services – Employee Benefits</u>				
210 Group Insurance – Contracted Provider	1,482.80	1,534.73		3,017.53
220 Social Security Contributions	56,048.51	66,046.54		122,095.05
230 PSERS Retirement Contributions	254,097.84	301,744.89		555,842.73
260 Workers' Compensation	4,356.22	4,185.39		8,541.61
270 Group Insurance – Self-Insurance	147,810.83	144,289.21		292,100.04
299 All Other Employee Benefits	252.99	276.61		529.60
Total Personnel Services – Employee Benefits	\$464,049.19	\$518,077.37		\$982,126.56
300 <u>Purchased Professional and Technical Services</u>				
322 Professional Educational Services – Ius	549,288.20	549,288.20		1,098,576.40
323 Professional Educational Services – Other Educational Agencies	1,286.25	638.75		1,925.00
Total Purchased Professional and Technical Services	\$550,574.45	\$549,926.95		\$1,100,501.40
500 <u>Other Purchased Services</u>				
510 Student Transportation Services		300.68		300.68
561 Tuition To Other School Districts Within the State		67,159.43		67,159.43
562 Tuition To Pennsylvania Charter Schools	139,075.27	517,177.54		656,252.81
563 Tuition To Nonpublic Schools	520.00	140,799.50		141,319.50
580 Travel	504.04	609.98		1,114.02
Total Other Purchased Services	\$140,099.31	\$726,047.13		\$866,146.44
600 <u>Supplies</u>				
610 General Supplies	1,354.12	1,400.26	352.83	3,107.21
640 Books and Periodicals	766.77	1,083.10		1,849.87
650 Supplies & Fees – Technology Related	45.73	867.34		913.07
Total Supplies	\$2,166.62	\$3,350.70	\$352.83	\$5,870.15
800 <u>Other Objects</u>				
810 Dues and Fees	1,999.77	2,145.22		4,144.99
Total Other Objects	\$1,999.77	\$2,145.22		\$4,144.99
Total 1240 Academic Support	\$1,920,173.61	\$2,705,345.21	\$352.83	\$4,625,871.65

LEA : 113382303 Eastern Lebanon County SD

Printed 11/26/2024 10:25:39 AM

General Fund (10)

1241 Learning Support – Public	Elementary	Secondary	Federal	Total
100 Personnel Services – Salaries				
100 Personnel Services – Salaries	673,518.27	905,797.84		1,579,316.11
Total Personnel Services – Salaries	\$673,518.27	\$905,797.84		\$1,579,316.11
200 Personnel Services – Employee Benefits				
210 Group Insurance – Contracted Provider	1,326.70	1,534.73		2,861.43
220 Social Security Contributions	49,334.39	66,046.54		115,380.93
230 PSERS Retirement Contributions	224,869.47	301,744.89		526,614.36
260 Workers' Compensation	4,126.88	3,965.04		8,091.92
270 Group Insurance – Self-Insurance	146,415.20	144,289.21		290,704.41
299 All Other Employee Benefits	233.79	276.61		510.40
Total Personnel Services – Employee Benefits	\$426,306.43	\$517,857.02		\$944,163.45
300 Purchased Professional and Technical Services				
322 Professional Educational Services – Ius	549,288.20	549,288.20		1,098,576.40
323 Professional Educational Services – Other Educational Agencies	1,286.25	638.75		1,925.00
Total Purchased Professional and Technical Services	\$550,574.45	\$549,926.95		\$1,100,501.40
500 Other Purchased Services				
561 Tuition To Other School Districts Within the State		67,159.43		67,159.43
562 Tuition To Pennsylvania Charter Schools	139,075.27	517,177.54		656,252.81
563 Tuition To Nonpublic Schools	520.00	140,799.50		141,319.50
580 Travel	41.27	520.01		561.28
Total Other Purchased Services	\$139,636.54	\$725,656.48		\$865,293.02
600 Supplies				
610 General Supplies	1,014.12	771.47	352.83	2,138.42
640 Books and Periodicals	308.42	841.23		1,149.65
650 Supplies & Fees – Technology Related	45.73	867.34		913.07
Total Supplies	\$1,368.27	\$2,480.04	\$352.83	\$4,201.14
800 Other Objects				
810 Dues and Fees	200.00	116.60		316.60
Total Other Objects	\$200.00	\$116.60		\$316.60
Total 1241 Learning Support – Public	\$1,791,603.96	\$2,701,834.93	\$352.83	\$4,493,791.72

LEA : 113382303 Eastern Lebanon County SD

Printed 11/26/2024 10:25:39 AM

General Fund (10)

1243 Gifted Support

	<u>Elementary</u>	<u>Secondary</u>	<u>Federal</u>	<u>Total</u>
100 <u>Personnel Services – Salaries</u>				
100 Personnel Services – Salaries	87,766.00			87,766.00
Total Personnel Services – Salaries	\$87,766.00			\$87,766.00
200 <u>Personnel Services – Employee Benefits</u>				
210 Group Insurance – Contracted Provider	156.10			156.10
220 Social Security Contributions	6,714.12			6,714.12
230 PSERS Retirement Contributions	29,228.37			29,228.37
260 Workers' Compensation	229.34	220.35		449.69
270 Group Insurance – Self-Insurance	1,395.63			1,395.63
299 All Other Employee Benefits	19.20			19.20
Total Personnel Services – Employee Benefits	\$37,742.76	\$220.35		\$37,963.11
500 <u>Other Purchased Services</u>				
510 Student Transportation Services		300.68		300.68
580 Travel	462.77	89.97		552.74
Total Other Purchased Services	\$462.77	\$390.65		\$853.42
600 <u>Supplies</u>				
610 General Supplies	340.00	628.79		968.79
640 Books and Periodicals	458.35	241.87		700.22
Total Supplies	\$798.35	\$870.66		\$1,669.01
800 <u>Other Objects</u>				
810 Dues and Fees	1,799.77	2,028.62		3,828.39
Total Other Objects	\$1,799.77	\$2,028.62		\$3,828.39
Total 1243 Gifted Support	\$128,569.65	\$3,510.28		\$132,079.93

LEA : 113382303 Eastern Lebanon County SD

Printed 11/26/2024 10:25:39 AM

General Fund (10)				
1290 Special Programs - Other Support	<u>Elementary</u>	<u>Secondary</u>	<u>Federal</u>	<u>Total</u>
300 <u>Purchased Professional and Technical Services</u>				
322 Professional Educational Services – Ius	160,269.32	3,606.04	207,389.88	371,265.24
Total Purchased Professional and Technical Services	\$160,269.32	\$3,606.04	\$207,389.88	\$371,265.24
500 <u>Other Purchased Services</u>				
510 Student Transportation Services	466.75	448.45		915.20
594 IU Payment By Withholding for Institutionalized Children's Programs – Special Classes	442.18	424.84		867.02
Total Other Purchased Services	\$908.93	\$873.29		\$1,782.22
Total 1290 Special Programs - Other Support	\$161,178.25	\$4,479.33	\$207,389.88	\$373,047.46

LEA : 113382303 Eastern Lebanon County SD

Printed 11/26/2024 10:25:39 AM

General Fund (10)

1300 Vocational Education

	<u>Elementary</u>	<u>Secondary</u>	<u>Federal</u>	<u>Total</u>
100 <u>Personnel Services – Salaries</u>				
100 Personnel Services – Salaries		60,661.40		60,661.40
Total Personnel Services – Salaries		\$60,661.40		\$60,661.40
200 <u>Personnel Services – Employee Benefits</u>				
210 Group Insurance – Contracted Provider		123.60		123.60
220 Social Security Contributions		4,566.66		4,566.66
230 PSERS Retirement Contributions		20,624.93		20,624.93
260 Workers' Compensation		310.81		310.81
270 Group Insurance – Self-Insurance		7,223.99		7,223.99
299 All Other Employee Benefits		19.20		19.20
Total Personnel Services – Employee Benefits		\$32,869.19		\$32,869.19
500 <u>Other Purchased Services</u>				
510 Student Transportation Services		722.05		722.05
564 Tuition To Career and Technology Centers		994,999.00		994,999.00
580 Travel		365.93		365.93
Total Other Purchased Services		\$996,086.98		\$996,086.98
600 <u>Supplies</u>				
610 General Supplies		14,501.03		14,501.03
Total Supplies		\$14,501.03		\$14,501.03
800 <u>Other Objects</u>				
810 Dues and Fees		1,970.00		1,970.00
Total Other Objects		\$1,970.00		\$1,970.00
Total 1300 Vocational Education		\$1,106,088.60		\$1,106,088.60

LEA : 113382303 Eastern Lebanon County SD

Printed 11/26/2024 10:25:39 AM

General Fund (10)

1400 Other Instructional Programs – Elementary / Secondary	<u>Elementary</u>	<u>Secondary</u>	<u>Federal</u>	<u>Total</u>
100 <u>Personnel Services – Salaries</u>				
100 Personnel Services – Salaries	121,218.21	98,070.60	336.98	219,625.79
Total Personnel Services – Salaries	\$121,218.21	\$98,070.60	\$336.98	\$219,625.79
200 <u>Personnel Services – Employee Benefits</u>				
210 Group Insurance – Contracted Provider	150.80	150.80		301.60
220 Social Security Contributions	8,691.44	8,875.90	24.66	17,592.00
230 PSERS Retirement Contributions	39,039.04	40,221.57	114.57	79,375.18
260 Workers' Compensation	573.90	551.39		1,125.29
270 Group Insurance – Self-Insurance	9,457.40	9,278.40		18,735.80
299 All Other Employee Benefits	19.20	19.20		38.40
Total Personnel Services – Employee Benefits	\$57,931.78	\$59,097.26	\$139.23	\$117,168.27
300 <u>Purchased Professional and Technical Services</u>				
390 Other Purchased Professional and Technical Services	4,072.21	3,912.51		7,984.72
Total Purchased Professional and Technical Services	\$4,072.21	\$3,912.51		\$7,984.72
500 <u>Other Purchased Services</u>				
561 Tuition To Other School Districts Within the State	4,513.81	4,336.79		8,850.60
580 Travel	728.25	705.54		1,433.79
Total Other Purchased Services	\$5,242.06	\$5,042.33		\$10,284.39
600 <u>Supplies</u>				
610 General Supplies	642.15	616.95	110.25	1,369.35
Total Supplies	\$642.15	\$616.95	\$110.25	\$1,369.35
Total 1400 Other Instructional Programs – Elementary / Secondary	\$189,106.41	\$166,739.65	\$586.46	\$356,432.52

LEA : 113382303 Eastern Lebanon County SD

Printed 11/26/2024 10:25:39 AM

General Fund (10)

1420 Summer School	<u>Elementary</u>	<u>Secondary</u>	<u>Federal</u>	<u>Total</u>
100 <u>Personnel Services – Salaries</u>				
100 Personnel Services – Salaries	37,507.48	9,896.58	336.98	47,741.04
Total Personnel Services – Salaries	\$37,507.48	\$9,896.58	\$336.98	\$47,741.04
200 <u>Personnel Services – Employee Benefits</u>				
220 Social Security Contributions	2,483.56	2,346.60	24.66	4,854.82
230 PSERS Retirement Contributions	10,936.04	10,601.20	114.57	21,651.81
260 Workers’ Compensation	124.75	119.86		244.61
Total Personnel Services – Employee Benefits	\$13,544.35	\$13,067.66	\$139.23	\$26,751.24
600 <u>Supplies</u>				
610 General Supplies			110.25	110.25
Total Supplies			\$110.25	\$110.25
Total 1420 Summer School	\$51,051.83	\$22,964.24	\$586.46	\$74,602.53

LEA : 113382303 Eastern Lebanon County SD

Printed 11/26/2024 10:25:39 AM

General Fund (10)

1430 Homebound Instruction	<u>Elementary</u>	<u>Secondary</u>	<u>Federal</u>	<u>Total</u>
100 <u>Personnel Services – Salaries</u>				
100 Personnel Services – Salaries	485.10	4,948.65		5,433.75
Total Personnel Services – Salaries	\$485.10	\$4,948.65		\$5,433.75
200 <u>Personnel Services – Employee Benefits</u>				
220 Social Security Contributions	36.42	357.86		394.28
230 PSERS Retirement Contributions	164.94	1,682.55		1,847.49
260 Workers’ Compensation	14.20	13.64		27.84
Total Personnel Services – Employee Benefits	\$215.56	\$2,054.05		\$2,269.61
500 <u>Other Purchased Services</u>				
580 Travel		582.89		582.89
Total Other Purchased Services		\$582.89		\$582.89
Total 1430 Homebound Instruction	\$700.66	\$7,585.59		\$8,286.25

LEA : 113382303 Eastern Lebanon County SD

Printed 11/26/2024 10:25:39 AM

General Fund (10)

1440 Alternative Regular Education Programs	<u>Elementary</u>	<u>Secondary</u>	<u>Federal</u>	<u>Total</u>
500 <u>Other Purchased Services</u>				
561 Tuition To Other School Districts Within the State	4,513.81	4,336.79		8,850.60
Total Other Purchased Services	\$4,513.81	\$4,336.79		\$8,850.60
Total 1440 Alternative Regular Education Programs	\$4,513.81	\$4,336.79		\$8,850.60

LEA : 113382303 Eastern Lebanon County SD

Printed 11/26/2024 10:25:39 AM

General Fund (10)

1441 Adjudicated / Court-Placed Programs	<u>Elementary</u>	<u>Secondary</u>	<u>Federal</u>	<u>Total</u>
500 <u>Other Purchased Services</u>				
561 Tuition To Other School Districts Within the State	4,513.81	4,336.79		8,850.60
Total Other Purchased Services	\$4,513.81	\$4,336.79		\$8,850.60
Total 1441 Adjudicated / Court-Placed Programs	\$4,513.81	\$4,336.79		\$8,850.60

LEA : 113382303 Eastern Lebanon County SD

Printed 11/26/2024 10:25:39 AM

General Fund (10)

1490 Additional Other Instructional Programs	<u>Elementary</u>	<u>Secondary</u>	<u>Federal</u>	<u>Total</u>
100 <u>Personnel Services – Salaries</u>				
100 Personnel Services – Salaries	83,225.63	83,225.37		166,451.00
Total Personnel Services – Salaries	\$83,225.63	\$83,225.37		\$166,451.00
200 <u>Personnel Services – Employee Benefits</u>				
210 Group Insurance – Contracted Provider	150.80	150.80		301.60
220 Social Security Contributions	6,171.46	6,171.44		12,342.90
230 PSERS Retirement Contributions	27,938.06	27,937.82		55,875.88
260 Workers' Compensation	434.95	417.89		852.84
270 Group Insurance – Self-Insurance	9,457.40	9,278.40		18,735.80
299 All Other Employee Benefits	19.20	19.20		38.40
Total Personnel Services – Employee Benefits	\$44,171.87	\$43,975.55		\$88,147.42
300 <u>Purchased Professional and Technical Services</u>				
390 Other Purchased Professional and Technical Services	4,072.21	3,912.51		7,984.72
Total Purchased Professional and Technical Services	\$4,072.21	\$3,912.51		\$7,984.72
500 <u>Other Purchased Services</u>				
580 Travel	728.25	122.65		850.90
Total Other Purchased Services	\$728.25	\$122.65		\$850.90
600 <u>Supplies</u>				
610 General Supplies	642.15	616.95		1,259.10
Total Supplies	\$642.15	\$616.95		\$1,259.10
Total 1490 Additional Other Instructional Programs	\$132,840.11	\$131,853.03		\$264,693.14

LEA : 113382303 Eastern Lebanon County SD

Printed 11/26/2024 10:25:50 AM

General Fund (10)

2000 Support Services

Total

100	<u>Personnel Services – Salaries</u>	
100	Personnel Services – Salaries	5,522,894.84
Total Personnel Services – Salaries		\$5,522,894.84
200	<u>Personnel Services – Employee Benefits</u>	
210	Group Insurance – Contracted Provider	13,062.98
220	Social Security Contributions	405,845.56
230	PSERS Retirement Contributions	1,847,120.12
240	Tuition Reimbursement	188,848.95
260	Workers' Compensation	28,297.60
270	Group Insurance – Self-Insurance	1,027,998.16
299	All Other Employee Benefits	59,331.37
Total Personnel Services – Employee Benefits		\$3,570,504.74
300	<u>Purchased Professional and Technical Services</u>	
310	Official / Administrative Services	13,815.15
323	Professional Educational Services – Other Educational Agencies	201,734.03
329	Professional Educational Services – Other	40,000.00
330	Other Professional Services	322,512.60
340	Technical Services	7,716.39
350	Security / Safety Services	19,512.75
360	Employee Training and Development Services	71,127.78
390	Other Purchased Professional and Technical Services	21,116.99
Total Purchased Professional and Technical Services		\$697,535.69
400	<u>Purchased Property Services</u>	
410	Cleaning Services	493,893.04
420	Utility Services	75,360.09
430	Repairs and Maintenance Services	470,617.76
440	Rentals	30,944.77
460	Extermination Services	4,250.00
Total Purchased Property Services		\$1,075,065.66
500	<u>Other Purchased Services</u>	
510	Student Transportation Services	2,087.37
513	Contracted Carriers	2,708,618.77
516	Student Transportation Services From the IU	6,724.70
519	Student Transportation Services From Other Sources	28,706.10
520	Insurance – General	18,439.00
521	Fire Insurance	58,308.00
522	Automotive Liability Insurance	9,901.00
523	General Property and Liability Insurance	108,693.00
529	Other Insurance	4,050.00
530	Communications	96,697.94
550	Printing and Binding	275.00
580	Travel	20,654.68
595	IU Payments By Withholding	20,198.67
599	Other Miscellaneous Purchased Services	28,933.01

LEA : 113382303 Eastern Lebanon County SD

Printed 11/26/2024 10:25:50 AM

General Fund (10)

2000 Support Services

Total

Total Other Purchased Services		\$3,112,287.24
600 <u>Supplies</u>		
610	General Supplies	432,974.45
620	Energy	538,249.74
630	Food	15,600.96
640	Books and Periodicals	327,222.49
650	Supplies & Fees – Technology Related	556,089.66
Total Supplies		\$1,870,137.30
800 <u>Other Objects</u>		
810	Dues and Fees	80,125.38
890	Miscellaneous Expenditures	4,416.61
Total Other Objects		\$84,541.99
Total 2000 Support Services		\$15,932,967.46

LEA : 113382303 Eastern Lebanon County SD

Printed 11/26/2024 10:25:50 AM

General Fund (10)

2100 Support Services – Students	Elementary	Secondary	Federal	Total
100 Personnel Services – Salaries				
100 Personnel Services – Salaries	464,903.21	549,144.69	201,417.75	1,286,912.90
Total Personnel Services – Salaries	\$464,903.21	\$549,144.69	\$201,417.75	\$1,286,912.90
200 Personnel Services – Employee Benefits				
210 Group Insurance – Contracted Provider	1,401.42	1,272.68	154.30	2,965.50
220 Social Security Contributions	37,957.04	40,080.49	10,529.24	94,032.37
230 PSERS Retirement Contributions	175,904.02	186,319.95	48,773.29	434,677.43
260 Workers' Compensation	3,176.10	3,051.56		6,593.73
270 Group Insurance – Self-Insurance	130,070.15	114,734.79	7,304.24	262,388.45
299 All Other Employee Benefits	2,675.85	2,565.17	19.20	5,279.42
Total Personnel Services – Employee Benefits	\$351,184.58	\$348,024.64	\$66,780.27	\$805,936.90
300 Purchased Professional and Technical Services				
340 Technical Services		2,390.95		2,390.95
390 Other Purchased Professional and Technical Services	218.79	984.20		1,202.99
Total Purchased Professional and Technical Services	\$218.79	\$3,375.15		\$3,593.94
500 Other Purchased Services				
510 Student Transportation Services	898.50	1,188.87		2,087.37
530 Communications				1,084.43
580 Travel	2,976.10	1,871.57		5,402.67
599 Other Miscellaneous Purchased Services	615.49	169.51		785.00
Total Other Purchased Services	\$4,490.09	\$3,229.95		\$9,359.47
600 Supplies				
610 General Supplies	14,853.48	11,081.64	6,672.18	32,607.30
650 Supplies & Fees – Technology Related	6,314.28	13,201.45		19,515.73
Total Supplies	\$21,167.76	\$24,283.09	\$6,672.18	\$52,123.03
800 Other Objects				
810 Dues and Fees	485.30	163.70		1,023.00
Total Other Objects	\$485.30	\$163.70		\$1,023.00
Total 2100 Support Services – Students	\$842,449.73	\$928,221.22	\$274,870.20	\$2,158,949.24

LEA : 113382303 Eastern Lebanon County SD

Printed 11/26/2024 10:25:50 AM

General Fund (10)

2110 Supervision of Student Services	Elementary	Secondary	Federal	Total
100 <u>Personnel Services – Salaries</u>				
100 Personnel Services – Salaries	146,059.87	140,332.03		286,391.90
Total Personnel Services – Salaries	\$146,059.87	\$140,332.03		\$286,391.90
200 <u>Personnel Services – Employee Benefits</u>				
210 Group Insurance – Contracted Provider	532.35	511.47		1,043.82
220 Social Security Contributions	10,598.14	10,182.52		20,780.66
230 PSERS Retirement Contributions	49,573.62	47,629.55		97,203.17
260 Workers' Compensation	748.36	719.02		1,467.38
270 Group Insurance – Self-Insurance	27,585.46	26,503.67		54,089.13
299 All Other Employee Benefits	2,553.78	2,453.64		5,007.42
Total Personnel Services – Employee Benefits	\$91,591.71	\$87,999.87		\$179,591.58
500 <u>Other Purchased Services</u>				
580 Travel	1,699.75	1,633.10		3,332.85
Total Other Purchased Services	\$1,699.75	\$1,633.10		\$3,332.85
600 <u>Supplies</u>				
610 General Supplies	7,240.80	6,956.86	6,672.18	20,869.84
650 Supplies & Fees – Technology Related	5,522.28	5,305.72		10,828.00
Total Supplies	\$12,763.08	\$12,262.58	\$6,672.18	\$31,697.84
800 <u>Other Objects</u>				
810 Dues and Fees	86.70	83.30		170.00
Total Other Objects	\$86.70	\$83.30		\$170.00
Total 2110 Supervision of Student Services	\$252,201.11	\$242,310.88	\$6,672.18	\$501,184.17

LEA : 113382303 Eastern Lebanon County SD

Printed 11/26/2024 10:25:50 AM

General Fund (10)

2111 Supervision of Student Services – Head of Component	Elementary	Secondary	Federal	Total
100 <u>Personnel Services – Salaries</u>				
100 Personnel Services – Salaries	146,059.87	140,332.03		286,391.90
Total Personnel Services – Salaries	\$146,059.87	\$140,332.03		\$286,391.90
200 <u>Personnel Services – Employee Benefits</u>				
210 Group Insurance – Contracted Provider	532.35	511.47		1,043.82
220 Social Security Contributions	10,598.14	10,182.52		20,780.66
230 PSERS Retirement Contributions	49,573.62	47,629.55		97,203.17
260 Workers' Compensation	748.36	719.02		1,467.38
270 Group Insurance – Self-Insurance	27,585.46	26,503.67		54,089.13
299 All Other Employee Benefits	2,553.78	2,453.64		5,007.42
Total Personnel Services – Employee Benefits	\$91,591.71	\$87,999.87		\$179,591.58
500 <u>Other Purchased Services</u>				
580 Travel	1,699.75	1,633.10		3,332.85
Total Other Purchased Services	\$1,699.75	\$1,633.10		\$3,332.85
600 <u>Supplies</u>				
610 General Supplies	7,240.80	6,956.86	6,672.18	20,869.84
650 Supplies & Fees – Technology Related	5,522.28	5,305.72		10,828.00
Total Supplies	\$12,763.08	\$12,262.58	\$6,672.18	\$31,697.84
800 <u>Other Objects</u>				
810 Dues and Fees	86.70	83.30		170.00
Total Other Objects	\$86.70	\$83.30		\$170.00
Total 2111 Supervision of Student Services – Head of Component	\$252,201.11	\$242,310.88	\$6,672.18	\$501,184.17

LEA : 113382303 Eastern Lebanon County SD

Printed 11/26/2024 10:25:50 AM

General Fund (10)

2120 Guidance Services	Elementary	Secondary	Federal	Total
100 Personnel Services – Salaries				
100 Personnel Services – Salaries	243,843.46	336,170.34	57,967.00	637,980.80
Total Personnel Services – Salaries	\$243,843.46	\$336,170.34	\$57,967.00	\$637,980.80
200 Personnel Services – Employee Benefits				
210 Group Insurance – Contracted Provider	588.86	622.32		1,211.18
220 Social Security Contributions	21,775.02	24,679.01		46,454.03
230 PSERS Retirement Contributions	100,830.50	113,991.97		214,822.47
260 Workers' Compensation	1,667.09	1,601.72		3,268.81
270 Group Insurance – Self-Insurance	72,333.35	69,094.66		141,428.01
299 All Other Employee Benefits	83.07	92.93		176.00
Total Personnel Services – Employee Benefits	\$197,277.89	\$210,082.61		\$407,360.50
300 Purchased Professional and Technical Services				
340 Technical Services		2,390.95		2,390.95
390 Other Purchased Professional and Technical Services	218.79	984.20		1,202.99
Total Purchased Professional and Technical Services	\$218.79	\$3,375.15		\$3,593.94
500 Other Purchased Services				
510 Student Transportation Services	898.50	1,188.87		2,087.37
580 Travel	1,060.45	158.01		1,218.46
599 Other Miscellaneous Purchased Services	85.00			85.00
Total Other Purchased Services	\$2,043.95	\$1,346.88		\$3,390.83
600 Supplies				
610 General Supplies	7,540.78	4,031.03		11,571.81
650 Supplies & Fees – Technology Related	792.00	7,895.73		8,687.73
Total Supplies	\$8,332.78	\$11,926.76		\$20,259.54
800 Other Objects				
810 Dues and Fees	398.60	80.40		479.00
Total Other Objects	\$398.60	\$80.40		\$479.00
Total 2120 Guidance Services	\$452,115.47	\$562,982.14	\$57,967.00	\$1,073,064.61

LEA : 113382303 Eastern Lebanon County SD

Printed 11/26/2024 10:25:50 AM

General Fund (10)

2140 Psychological Services	Elementary	Secondary	Federal	Total
100 <u>Personnel Services – Salaries</u>				
100 Personnel Services – Salaries	74,999.88	72,642.32	143,450.75	291,092.95
Total Personnel Services – Salaries	\$74,999.88	\$72,642.32	\$143,450.75	\$291,092.95
200 <u>Personnel Services – Employee Benefits</u>				
210 Group Insurance – Contracted Provider	280.21	138.89	154.30	573.40
220 Social Security Contributions	5,583.88	5,218.96	10,529.24	21,332.08
230 PSERS Retirement Contributions	25,499.90	24,698.43	48,773.29	98,971.62
260 Workers' Compensation	760.65	730.82		1,491.47
270 Group Insurance – Self-Insurance	30,151.34	19,136.46	7,304.24	56,592.04
299 All Other Employee Benefits	39.00	18.60	19.20	76.80
Total Personnel Services – Employee Benefits	\$62,314.98	\$49,942.16	\$66,780.27	\$179,037.41
500 <u>Other Purchased Services</u>				
580 Travel	215.90	80.46		296.36
Total Other Purchased Services	\$215.90	\$80.46		\$296.36
Total 2140 Psychological Services	\$137,530.76	\$122,664.94	\$210,231.02	\$470,426.72

LEA : 113382303 Eastern Lebanon County SD

Printed 11/26/2024 10:25:50 AM

General Fund (10)

2150 Speech Pathology and Audiology Services	<u>Elementary</u>	<u>Secondary</u>	<u>Federal</u>	<u>Total</u>
500 <u>Other Purchased Services</u>				
599 Other Miscellaneous Purchased Services	530.49	169.51		700.00
Total Other Purchased Services	\$530.49	\$169.51		\$700.00
600 <u>Supplies</u>				
610 General Supplies	71.90	93.75		165.65
Total Supplies	\$71.90	\$93.75		\$165.65
Total 2150 Speech Pathology and Audiology Services	\$602.39	\$263.26		\$865.65

LEA : 113382303 Eastern Lebanon County SD

Printed 11/26/2024 10:25:50 AM

General Fund (10)

2160 Social Work Services

Elementary Secondary Federal Total

100 <u>Personnel Services – Salaries</u>				
100 Personnel Services – Salaries				71,447.25
Total Personnel Services – Salaries				\$71,447.25
200 <u>Personnel Services – Employee Benefits</u>				
210 Group Insurance – Contracted Provider				137.10
220 Social Security Contributions				5,465.60
230 PSERS Retirement Contributions				23,680.17
260 Workers' Compensation				366.07
270 Group Insurance – Self-Insurance				10,279.27
299 All Other Employee Benefits				19.20
Total Personnel Services – Employee Benefits				\$39,947.41
500 <u>Other Purchased Services</u>				
530 Communications				1,084.43
580 Travel				555.00
Total Other Purchased Services				\$1,639.43
800 <u>Other Objects</u>				
810 Dues and Fees				374.00
Total Other Objects				\$374.00
Total 2160 Social Work Services				\$113,408.09

LEA : 113382303 Eastern Lebanon County SD

Printed 11/26/2024 10:25:50 AM

General Fund (10)

2200 Support Services – Instructional Staff	Elementary	Secondary	Federal	Total
100 Personnel Services – Salaries				
100 Personnel Services – Salaries	455,658.20	395,381.81		851,040.01
Total Personnel Services – Salaries	\$455,658.20	\$395,381.81		\$851,040.01
200 Personnel Services – Employee Benefits				
210 Group Insurance – Contracted Provider	816.49	722.51		1,539.00
220 Social Security Contributions	33,546.60	28,916.08		62,462.68
230 PSERS Retirement Contributions	153,466.24	134,043.83		287,510.07
240 Tuition Reimbursement	101,802.07	85,765.68		187,567.75
260 Workers' Compensation	2,223.83	2,136.64		4,360.47
270 Group Insurance – Self-Insurance	77,355.32	70,738.27		148,093.59
299 All Other Employee Benefits	1,649.36	1,559.76		3,209.12
Total Personnel Services – Employee Benefits	\$370,859.91	\$323,882.77		\$694,742.68
300 Purchased Professional and Technical Services				
340 Technical Services	3,744.07	1,031.37		4,775.44
360 Employee Training and Development Services	20,584.69	24,435.83		45,020.52
Total Purchased Professional and Technical Services	\$24,328.76	\$25,467.20		\$49,795.96
400 Purchased Property Services				
430 Repairs and Maintenance Services	11,859.54	11,394.46		23,254.00
Total Purchased Property Services	\$11,859.54	\$11,394.46		\$23,254.00
500 Other Purchased Services				
530 Communications	1,858.67	1,785.78		3,644.45
580 Travel	3,317.71	2,936.69	229.00	6,483.40
599 Other Miscellaneous Purchased Services	1,424.50	1,073.65		2,498.15
Total Other Purchased Services	\$6,600.88	\$5,796.12	\$229.00	\$12,626.00
600 Supplies				
610 General Supplies	7,804.71	9,087.68		16,892.39
630 Food	947.85	910.68		1,858.53
640 Books and Periodicals	170,801.96	156,420.53		327,222.49
650 Supplies & Fees – Technology Related	42,488.71	49,675.47		92,164.18
Total Supplies	\$222,043.23	\$216,094.36		\$438,137.59
800 Other Objects				
810 Dues and Fees	2,729.82	3,841.87		6,571.69
Total Other Objects	\$2,729.82	\$3,841.87		\$6,571.69
Total 2200 Support Services – Instructional Staff	\$1,094,080.34	\$981,858.59	\$229.00	\$2,076,167.93

LEA : 113382303 Eastern Lebanon County SD

Printed 11/26/2024 10:25:50 AM

General Fund (10)

2220 Technology Support Services	Elementary	Secondary	Federal	Total
100 <u>Personnel Services – Salaries</u>				
100 Personnel Services – Salaries	176,880.66	93,204.70		270,085.36
Total Personnel Services – Salaries	\$176,880.66	\$93,204.70		\$270,085.36
200 <u>Personnel Services – Employee Benefits</u>				
210 Group Insurance – Contracted Provider	218.69	123.65		342.34
220 Social Security Contributions	13,153.77	6,784.68		19,938.45
230 PSERS Retirement Contributions	60,139.41	31,689.59		91,829.00
260 Workers' Compensation	705.75	678.08		1,383.83
270 Group Insurance – Self-Insurance	31,809.98	26,489.60		58,299.58
299 All Other Employee Benefits	44.74	32.06		76.80
Total Personnel Services – Employee Benefits	\$106,072.34	\$65,797.66		\$171,870.00
400 <u>Purchased Property Services</u>				
430 Repairs and Maintenance Services	11,859.54	11,394.46		23,254.00
Total Purchased Property Services	\$11,859.54	\$11,394.46		\$23,254.00
500 <u>Other Purchased Services</u>				
530 Communications	324.06	311.35		635.41
580 Travel	394.51	128.13		522.64
Total Other Purchased Services	\$718.57	\$439.48		\$1,158.05
600 <u>Supplies</u>				
650 Supplies & Fees – Technology Related	1,277.09	1,227.01		2,504.10
Total Supplies	\$1,277.09	\$1,227.01		\$2,504.10
Total 2220 Technology Support Services	\$296,808.20	\$172,063.31		\$468,871.51

LEA : 113382303 Eastern Lebanon County SD

Printed 11/26/2024 10:25:50 AM

General Fund (10)

2240 Computer-Assisted Instruction Support Services

	<u>Elementary</u>	<u>Secondary</u>	<u>Federal</u>	<u>Total</u>
100 <u>Personnel Services – Salaries</u>				
100 Personnel Services – Salaries	1,278.84	1,405.16		2,684.00
Total Personnel Services – Salaries	\$1,278.84	\$1,405.16		\$2,684.00
200 <u>Personnel Services – Employee Benefits</u>				
220 Social Security Contributions	94.78	104.14		198.92
230 PSERS Retirement Contributions	378.71	363.85		742.56
260 Workers’ Compensation	7.01	6.74		13.75
Total Personnel Services – Employee Benefits	\$480.50	\$474.73		\$955.23
500 <u>Other Purchased Services</u>				
530 Communications	318.39	305.91		624.30
580 Travel	344.25	330.75		675.00
Total Other Purchased Services	\$662.64	\$636.66		\$1,299.30
Total 2240 Computer-Assisted Instruction Support Services	\$2,421.98	\$2,516.55		\$4,938.53

General Fund (10)

2250 School Library Services	<u>Elementary</u>	<u>Secondary</u>	<u>Federal</u>	<u>Total</u>
100 <u>Personnel Services – Salaries</u>				
100 Personnel Services – Salaries	121,494.30	153,578.07		275,072.37
Total Personnel Services – Salaries	\$121,494.30	\$153,578.07		\$275,072.37
200 <u>Personnel Services – Employee Benefits</u>				
210 Group Insurance – Contracted Provider	255.09	269.59		524.68
220 Social Security Contributions	8,883.05	11,266.89		20,149.94
230 PSERS Retirement Contributions	40,095.07	52,111.08		92,206.15
260 Workers' Compensation	718.79	690.60		1,409.39
270 Group Insurance – Self-Insurance	33,524.68	32,699.41		66,224.09
299 All Other Employee Benefits	47.94	32.06		80.00
Total Personnel Services – Employee Benefits	\$83,524.62	\$97,069.63		\$180,594.25
300 <u>Purchased Professional and Technical Services</u>				
340 Technical Services	3,744.07	1,031.37		4,775.44
Total Purchased Professional and Technical Services	\$3,744.07	\$1,031.37		\$4,775.44
500 <u>Other Purchased Services</u>				
599 Other Miscellaneous Purchased Services	307.02			307.02
Total Other Purchased Services	\$307.02			\$307.02
600 <u>Supplies</u>				
610 General Supplies	2,159.51	5,105.97		7,265.48
640 Books and Periodicals	11,857.22	3,708.91		15,566.13
650 Supplies & Fees – Technology Related		8,852.98		8,852.98
Total Supplies	\$14,016.73	\$17,667.86		\$31,684.59
800 <u>Other Objects</u>				
810 Dues and Fees		1,010.86		1,010.86
Total Other Objects		\$1,010.86		\$1,010.86
Total 2250 School Library Services	\$223,086.74	\$270,357.79		\$493,444.53

LEA : 113382303 Eastern Lebanon County SD

Printed 11/26/2024 10:25:50 AM

General Fund (10)

2260 Instruction and Curriculum Development Services	<u>Elementary</u>	<u>Secondary</u>	<u>Federal</u>	<u>Total</u>
100 <u>Personnel Services – Salaries</u>				
100 Personnel Services – Salaries	130,410.72	133,263.90		263,674.62
Total Personnel Services – Salaries	\$130,410.72	\$133,263.90		\$263,674.62
200 <u>Personnel Services – Employee Benefits</u>				
210 Group Insurance – Contracted Provider	342.71	329.27		671.98
220 Social Security Contributions	9,524.71	9,733.87		19,258.58
230 PSERS Retirement Contributions	44,166.23	45,143.11		89,309.34
260 Workers' Compensation	689.00	661.99		1,350.99
270 Group Insurance – Self-Insurance	12,020.66	11,549.26		23,569.92
299 All Other Employee Benefits	1,556.68	1,495.64		3,052.32
Total Personnel Services – Employee Benefits	\$68,299.99	\$68,913.14		\$137,213.13
500 <u>Other Purchased Services</u>				
530 Communications	568.10	545.82		1,113.92
580 Travel	2,486.52	2,389.00	229.00	5,104.52
599 Other Miscellaneous Purchased Services	1,117.48	1,073.65		2,191.13
Total Other Purchased Services	\$4,172.10	\$4,008.47	\$229.00	\$8,409.57
600 <u>Supplies</u>				
610 General Supplies	4,144.20	3,981.71		8,125.91
630 Food	947.85	910.68		1,858.53
640 Books and Periodicals	158,944.74	152,711.62		311,656.36
650 Supplies & Fees – Technology Related	41,211.62	39,595.48		80,807.10
Total Supplies	\$205,248.41	\$197,199.49		\$402,447.90
800 <u>Other Objects</u>				
810 Dues and Fees	2,535.12	2,435.71		4,970.83
Total Other Objects	\$2,535.12	\$2,435.71		\$4,970.83
Total 2260 Instruction and Curriculum Development Services	\$410,666.34	\$405,820.71	\$229.00	\$816,716.05

LEA : 113382303 Eastern Lebanon County SD

Printed 11/26/2024 10:25:50 AM

General Fund (10)

2270 Instructional Staff Professional Development Services	Elementary	Secondary	Federal	Total
100 <u>Personnel Services – Salaries</u>				
100 Personnel Services – Salaries	25,593.68	13,929.98		39,523.66
Total Personnel Services – Salaries	\$25,593.68	\$13,929.98		\$39,523.66
200 <u>Personnel Services – Employee Benefits</u>				
220 Social Security Contributions	1,890.29	1,026.50		2,916.79
230 PSERS Retirement Contributions	8,686.82	4,736.20		13,423.02
240 Tuition Reimbursement	101,802.07	85,765.68		187,567.75
260 Workers' Compensation	103.28	99.23		202.51
Total Personnel Services – Employee Benefits	\$112,482.46	\$91,627.61		\$204,110.07
300 <u>Purchased Professional and Technical Services</u>				
360 Employee Training and Development Services	20,584.69	24,435.83		45,020.52
Total Purchased Professional and Technical Services	\$20,584.69	\$24,435.83		\$45,020.52
500 <u>Other Purchased Services</u>				
530 Communications	648.12	622.70		1,270.82
580 Travel	92.43	88.81		181.24
Total Other Purchased Services	\$740.55	\$711.51		\$1,452.06
600 <u>Supplies</u>				
610 General Supplies	1,501.00			1,501.00
Total Supplies	\$1,501.00			\$1,501.00
800 <u>Other Objects</u>				
810 Dues and Fees	194.70	395.30		590.00
Total Other Objects	\$194.70	\$395.30		\$590.00
Total 2270 Instructional Staff Professional Development Services	\$161,097.08	\$131,100.23		\$292,197.31

LEA : 113382303 Eastern Lebanon County SD

Printed 11/26/2024 10:25:50 AM

General Fund (10)

2300 Support Services – Administration	Elementary	Secondary	Federal	Total
100 Personnel Services – Salaries				
100 Personnel Services – Salaries	605,890.65	463,713.60		1,336,621.19
Total Personnel Services – Salaries	\$605,890.65	\$463,713.60		\$1,336,621.19
200 Personnel Services – Employee Benefits				
210 Group Insurance – Contracted Provider	1,850.86	1,557.76		4,591.06
220 Social Security Contributions	45,268.47	34,505.59		98,433.40
230 PSERS Retirement Contributions	200,979.10	155,577.56		441,196.81
260 Workers' Compensation	2,794.96	2,685.36		6,848.43
270 Group Insurance – Self-Insurance	77,303.98	74,446.30		170,142.72
299 All Other Employee Benefits	20,737.96	2,727.64		44,765.09
Total Personnel Services – Employee Benefits	\$348,935.33	\$271,500.21		\$765,977.51
300 Purchased Professional and Technical Services				
310 Official / Administrative Services				13,815.15
329 Professional Educational Services – Other			40,000.00	40,000.00
330 Other Professional Services	3,992.92	8,106.83		167,556.58
390 Other Purchased Professional and Technical Services				1,100.00
Total Purchased Professional and Technical Services	\$3,992.92	\$8,106.83	\$40,000.00	\$222,471.73
500 Other Purchased Services				
520 Insurance – General				17,689.00
530 Communications	10,721.86	9,741.31		27,328.86
550 Printing and Binding		275.00		275.00
580 Travel	424.36	1,374.87		2,652.33
599 Other Miscellaneous Purchased Services				23,738.87
Total Other Purchased Services	\$11,146.22	\$11,391.18		\$71,684.06
600 Supplies				
610 General Supplies	5,080.11	8,017.55		35,499.06
630 Food	538.39	139.53		13,348.39
650 Supplies & Fees – Technology Related		50.00		284.87
Total Supplies	\$5,618.50	\$8,207.08		\$49,132.32
800 Other Objects				
810 Dues and Fees	1,507.20	1,653.00		43,850.54
890 Miscellaneous Expenditures	1,457.48	2,959.13		4,416.61
Total Other Objects	\$2,964.68	\$4,612.13		\$48,267.15
Total 2300 Support Services – Administration	\$978,548.30	\$767,531.03	\$40,000.00	\$2,494,153.96

LEA : 113382303 Eastern Lebanon County SD

Printed 11/26/2024 10:25:50 AM

General Fund (10)

2310 Board Services

Elementary Secondary Federal Total

500 <u>Other Purchased Services</u>				
520 Insurance – General				17,689.00
530 Communications				107.69
580 Travel				600.00
599 Other Miscellaneous Purchased Services				314.08
Total Other Purchased Services				\$18,710.77
600 <u>Supplies</u>				
610 General Supplies				3,110.38
630 Food				1,194.10
Total Supplies				\$4,304.48
800 <u>Other Objects</u>				
810 Dues and Fees				31,735.49
Total Other Objects				\$31,735.49
Total 2310 Board Services				\$54,750.74

LEA : 113382303 Eastern Lebanon County SD

Printed 11/26/2024 10:25:50 AM

General Fund (10)

2330 Tax Assessment and Collection Services	<u>Elementary</u>	<u>Secondary</u>	<u>Federal</u>	<u>Total</u>
300 <u>Purchased Professional and Technical Services</u>				
310 Official / Administrative Services				13,815.15
Total Purchased Professional and Technical Services				\$13,815.15
500 <u>Other Purchased Services</u>				
530 Communications				6,758.00
Total Other Purchased Services				\$6,758.00
Total 2330 Tax Assessment and Collection Services				\$20,573.15

LEA : 113382303 Eastern Lebanon County SD

Printed 11/26/2024 10:25:50 AM

General Fund (10)

2350 Legal and Accounting Services	<u>Elementary</u>	<u>Secondary</u>	<u>Federal</u>	<u>Total</u>
300 <u>Purchased Professional and Technical Services</u>				
330 Other Professional Services				146,906.83
Total Purchased Professional and Technical Services				\$146,906.83
Total 2350 Legal and Accounting Services				\$146,906.83

LEA : 113382303 Eastern Lebanon County SD

Printed 11/26/2024 10:25:50 AM

General Fund (10)

2360 Office of the Superintendent / Executive Director Services	Elementary	Secondary	Federal	Total
100 <u>Personnel Services – Salaries</u>				
100 Personnel Services – Salaries				267,016.94
Total Personnel Services – Salaries				\$267,016.94
200 <u>Personnel Services – Employee Benefits</u>				
210 Group Insurance – Contracted Provider				1,182.44
220 Social Security Contributions				18,659.34
230 PSERS Retirement Contributions				84,640.15
260 Workers' Compensation				1,368.11
270 Group Insurance – Self-Insurance				18,392.44
299 All Other Employee Benefits				21,299.49
Total Personnel Services – Employee Benefits				\$145,541.97
300 <u>Purchased Professional and Technical Services</u>				
329 Professional Educational Services – Other			40,000.00	40,000.00
330 Other Professional Services				8,550.00
390 Other Purchased Professional and Technical Services				1,100.00
Total Purchased Professional and Technical Services			\$40,000.00	\$49,650.00
500 <u>Other Purchased Services</u>				
530 Communications	7,852.33	7,544.40		15,396.73
580 Travel				253.10
599 Other Miscellaneous Purchased Services				963.79
Total Other Purchased Services	\$7,852.33	\$7,544.40		\$16,613.62
600 <u>Supplies</u>				
610 General Supplies				13,953.31
630 Food				11,476.37
650 Supplies & Fees – Technology Related				234.87
Total Supplies				\$25,664.55
800 <u>Other Objects</u>				
810 Dues and Fees				8,954.85
Total Other Objects				\$8,954.85
Total 2360 Office of the Superintendent / Executive Director Services	\$7,852.33	\$7,544.40	\$40,000.00	\$513,441.93

LEA : 113382303 Eastern Lebanon County SD

Printed 11/26/2024 10:25:50 AM

General Fund (10)

2380 Office of the Principal Services	Elementary	Secondary	Federal	Total
100 <u>Personnel Services – Salaries</u>				
100 Personnel Services – Salaries	605,890.65	463,713.60		1,069,604.25
Total Personnel Services – Salaries	\$605,890.65	\$463,713.60		\$1,069,604.25
200 <u>Personnel Services – Employee Benefits</u>				
210 Group Insurance – Contracted Provider	1,850.86	1,557.76		3,408.62
220 Social Security Contributions	45,268.47	34,505.59		79,774.06
230 PSERS Retirement Contributions	200,979.10	155,577.56		356,556.66
260 Workers' Compensation	2,794.96	2,685.36		5,480.32
270 Group Insurance – Self-Insurance	77,303.98	74,446.30		151,750.28
299 All Other Employee Benefits	20,737.96	2,727.64		23,465.60
Total Personnel Services – Employee Benefits	\$348,935.33	\$271,500.21		\$620,435.54
300 <u>Purchased Professional and Technical Services</u>				
330 Other Professional Services	3,992.92	8,106.83		12,099.75
Total Purchased Professional and Technical Services	\$3,992.92	\$8,106.83		\$12,099.75
500 <u>Other Purchased Services</u>				
530 Communications	2,869.53	2,196.91		5,066.44
550 Printing and Binding		275.00		275.00
580 Travel	424.36	1,374.87		1,799.23
Total Other Purchased Services	\$3,293.89	\$3,846.78		\$7,140.67
600 <u>Supplies</u>				
610 General Supplies	5,080.11	8,017.55		13,097.66
630 Food	538.39	139.53		677.92
650 Supplies & Fees – Technology Related		50.00		50.00
Total Supplies	\$5,618.50	\$8,207.08		\$13,825.58
800 <u>Other Objects</u>				
810 Dues and Fees	1,507.20	1,653.00		3,160.20
890 Miscellaneous Expenditures	1,457.48	2,959.13		4,416.61
Total Other Objects	\$2,964.68	\$4,612.13		\$7,576.81
Total 2380 Office of the Principal Services	\$970,695.97	\$759,986.63		\$1,730,682.60

LEA : 113382303 Eastern Lebanon County SD

Printed 11/26/2024 10:25:50 AM

General Fund (10)

2390 Other Administration Services	<u>Elementary</u>	<u>Secondary</u>	<u>Federal</u>	<u>Total</u>
500 <u>Other Purchased Services</u>				
599 Other Miscellaneous Purchased Services				22,461.00
Total Other Purchased Services				\$22,461.00
600 <u>Supplies</u>				
610 General Supplies				5,337.71
Total Supplies				\$5,337.71
Total 2390 Other Administration Services				\$27,798.71

LEA : 113382303 Eastern Lebanon County SD

Printed 11/26/2024 10:25:50 AM

General Fund (10)

2400 Support Services – Pupil Health	<u>Elementary</u>	<u>Secondary</u>	<u>Federal</u>	<u>Total</u>
100 <u>Personnel Services – Salaries</u>				
100 Personnel Services – Salaries				247,662.76
Total Personnel Services – Salaries				\$247,662.76
200 <u>Personnel Services – Employee Benefits</u>				
210 Group Insurance – Contracted Provider				398.79
220 Social Security Contributions				18,420.81
230 PSERS Retirement Contributions				80,211.45
260 Workers' Compensation				1,268.95
270 Group Insurance – Self-Insurance				61,113.89
299 All Other Employee Benefits				2,927.80
Total Personnel Services – Employee Benefits				\$164,341.69
300 <u>Purchased Professional and Technical Services</u>				
323 Professional Educational Services – Other Educational Agencies				201,734.03
330 Other Professional Services				3,000.00
Total Purchased Professional and Technical Services				\$204,734.03
400 <u>Purchased Property Services</u>				
430 Repairs and Maintenance Services				111.78
Total Purchased Property Services				\$111.78
500 <u>Other Purchased Services</u>				
580 Travel				99.34
Total Other Purchased Services				\$99.34
600 <u>Supplies</u>				
610 General Supplies				4,096.51
650 Supplies & Fees – Technology Related				9,807.50
Total Supplies				\$13,904.01
Total 2400 Support Services – Pupil Health				\$630,853.61

LEA : 113382303 Eastern Lebanon County SD

Printed 11/26/2024 10:25:50 AM

General Fund (10)

2420 Medical Services

<u>Elementary</u>	<u>Secondary</u>	<u>Federal</u>	<u>Total</u>
-------------------	------------------	----------------	--------------

300 Purchased Professional and Technical Services

323 Professional Educational Services – Other Educational Agencies			201,734.03
--	--	--	------------

Total Purchased Professional and Technical Services			\$201,734.03
--	--	--	---------------------

Total 2420 Medical Services			\$201,734.03
------------------------------------	--	--	---------------------

LEA : 113382303 Eastern Lebanon County SD

Printed 11/26/2024 10:25:50 AM

General Fund (10)

2440 Nursing Services

	<u>Elementary</u>	<u>Secondary</u>	<u>Federal</u>	<u>Total</u>
100 <u>Personnel Services – Salaries</u>				
100 Personnel Services – Salaries				247,662.76
Total Personnel Services – Salaries				\$247,662.76
200 <u>Personnel Services – Employee Benefits</u>				
210 Group Insurance – Contracted Provider				398.79
220 Social Security Contributions				18,420.81
230 PSERS Retirement Contributions				80,211.45
260 Workers' Compensation				1,268.95
270 Group Insurance – Self-Insurance				61,113.89
299 All Other Employee Benefits				2,927.80
Total Personnel Services – Employee Benefits				\$164,341.69
300 <u>Purchased Professional and Technical Services</u>				
330 Other Professional Services				3,000.00
Total Purchased Professional and Technical Services				\$3,000.00
400 <u>Purchased Property Services</u>				
430 Repairs and Maintenance Services				111.78
Total Purchased Property Services				\$111.78
500 <u>Other Purchased Services</u>				
580 Travel				99.34
Total Other Purchased Services				\$99.34
600 <u>Supplies</u>				
610 General Supplies				4,096.51
650 Supplies & Fees – Technology Related				9,807.50
Total Supplies				\$13,904.01
Total 2440 Nursing Services				\$429,119.58

LEA : 113382303 Eastern Lebanon County SD

Printed 11/26/2024 10:25:50 AM

General Fund (10)

2500 Support Services – Business	Elementary	Secondary	Federal	Total
100 <u>Personnel Services – Salaries</u>				
100 Personnel Services – Salaries				312,884.76
Total Personnel Services – Salaries				\$312,884.76
200 <u>Personnel Services – Employee Benefits</u>				
210 Group Insurance – Contracted Provider				985.95
220 Social Security Contributions				22,731.91
230 PSERS Retirement Contributions				105,955.85
260 Workers' Compensation				1,603.12
270 Group Insurance – Self-Insurance				74,986.61
299 All Other Employee Benefits				86.40
Total Personnel Services – Employee Benefits				\$206,349.84
300 <u>Purchased Professional and Technical Services</u>				
330 Other Professional Services				74,766.80
Total Purchased Professional and Technical Services				\$74,766.80
400 <u>Purchased Property Services</u>				
440 Rentals				12,289.36
Total Purchased Property Services				\$12,289.36
500 <u>Other Purchased Services</u>				
520 Insurance – General				750.00
530 Communications				11,422.93
580 Travel				3,722.68
Total Other Purchased Services				\$15,895.61
600 <u>Supplies</u>				
610 General Supplies				(20,020.87)
630 Food				394.04
650 Supplies & Fees – Technology Related				52,390.45
Total Supplies				\$32,763.62
800 <u>Other Objects</u>				
810 Dues and Fees				25,437.55
Total Other Objects				\$25,437.55
Total 2500 Support Services – Business				\$680,387.54

LEA : 113382303 Eastern Lebanon County SD

Printed 11/26/2024 10:25:50 AM

General Fund (10)				
2510 Fiscal Services				
	<u>Elementary</u>	<u>Secondary</u>	<u>Federal</u>	<u>Total</u>
100 <u>Personnel Services – Salaries</u>				
100 Personnel Services – Salaries				312,884.76
Total Personnel Services – Salaries				\$312,884.76
200 <u>Personnel Services – Employee Benefits</u>				
210 Group Insurance – Contracted Provider				985.95
220 Social Security Contributions				22,731.91
230 PSERS Retirement Contributions				105,955.85
260 Workers' Compensation				1,603.12
270 Group Insurance – Self-Insurance				74,986.61
299 All Other Employee Benefits				86.40
Total Personnel Services – Employee Benefits				\$206,349.84
300 <u>Purchased Professional and Technical Services</u>				
330 Other Professional Services				74,766.80
Total Purchased Professional and Technical Services				\$74,766.80
400 <u>Purchased Property Services</u>				
440 Rentals				12,289.36
Total Purchased Property Services				\$12,289.36
500 <u>Other Purchased Services</u>				
520 Insurance – General				750.00
530 Communications				11,422.93
580 Travel				3,722.68
Total Other Purchased Services				\$15,895.61
600 <u>Supplies</u>				
610 General Supplies				(20,020.87)
630 Food				394.04
650 Supplies & Fees – Technology Related				52,390.45
Total Supplies				\$32,763.62
800 <u>Other Objects</u>				
810 Dues and Fees				25,437.55
Total Other Objects				\$25,437.55
Total 2510 Fiscal Services				\$680,387.54

LEA : 113382303 Eastern Lebanon County SD

Printed 11/26/2024 10:25:50 AM

General Fund (10)

2511 Supervision of Fiscal Services - Head of Component

Elementary Secondary Federal Total

100 <u>Personnel Services – Salaries</u>				
100 Personnel Services – Salaries				61,936.74
Total Personnel Services – Salaries				\$61,936.74
200 <u>Personnel Services – Employee Benefits</u>				
210 Group Insurance – Contracted Provider				259.90
220 Social Security Contributions				4,542.65
230 PSERS Retirement Contributions				21,058.53
260 Workers' Compensation				317.34
270 Group Insurance – Self-Insurance				7,718.58
299 All Other Employee Benefits				8.00
Total Personnel Services – Employee Benefits				\$33,905.00
500 <u>Other Purchased Services</u>				
530 Communications				486.49
580 Travel				3,080.19
Total Other Purchased Services				\$3,566.68
Total 2511 Supervision of Fiscal Services - Head of Component				\$99,408.42

LEA : 113382303 Eastern Lebanon County SD

Printed 11/26/2024 10:25:50 AM

General Fund (10)				
2515 Financial Accounting Services	<u>Elementary</u>	<u>Secondary</u>	<u>Federal</u>	<u>Total</u>
100 <u>Personnel Services – Salaries</u>				
100 Personnel Services – Salaries				250,948.02
Total Personnel Services – Salaries				\$250,948.02
200 <u>Personnel Services – Employee Benefits</u>				
210 Group Insurance – Contracted Provider				726.05
220 Social Security Contributions				18,189.26
230 PSERS Retirement Contributions				84,897.32
260 Workers' Compensation				1,285.78
270 Group Insurance – Self-Insurance				67,268.03
299 All Other Employee Benefits				78.40
Total Personnel Services – Employee Benefits				\$172,444.84
300 <u>Purchased Professional and Technical Services</u>				
330 Other Professional Services				74,766.80
Total Purchased Professional and Technical Services				\$74,766.80
400 <u>Purchased Property Services</u>				
440 Rentals				12,289.36
Total Purchased Property Services				\$12,289.36
500 <u>Other Purchased Services</u>				
520 Insurance – General				750.00
530 Communications				10,936.44
580 Travel				642.49
Total Other Purchased Services				\$12,328.93
600 <u>Supplies</u>				
610 General Supplies				(20,020.87)
630 Food				394.04
650 Supplies & Fees – Technology Related				52,390.45
Total Supplies				\$32,763.62
800 <u>Other Objects</u>				
810 Dues and Fees				13,524.70
Total Other Objects				\$13,524.70
Total 2515 Financial Accounting Services				\$569,066.27

LEA : 113382303 Eastern Lebanon County SD

Printed 11/26/2024 10:25:50 AM

General Fund (10)				
2519 Other Fiscal Services	<u>Elementary</u>	<u>Secondary</u>	<u>Federal</u>	<u>Total</u>
800 <u>Other Objects</u>				
810 Dues and Fees				11,912.85
Total Other Objects				\$11,912.85
Total 2519 Other Fiscal Services				\$11,912.85

LEA : 113382303 Eastern Lebanon County SD

Printed 11/26/2024 10:25:50 AM

General Fund (10)

2600 Operation and Maintenance of Plant Services

Elementary Secondary Federal Total

100 <u>Personnel Services – Salaries</u>			
100 Personnel Services – Salaries			1,220,722.82
Total Personnel Services – Salaries			\$1,220,722.82
200 <u>Personnel Services – Employee Benefits</u>			
210 Group Insurance – Contracted Provider			2,019.72
220 Social Security Contributions			89,982.65
230 PSERS Retirement Contributions			407,383.44
260 Workers' Compensation			6,254.61
270 Group Insurance – Self-Insurance			281,112.13
299 All Other Employee Benefits			456.00
Total Personnel Services – Employee Benefits			\$787,208.55
300 <u>Purchased Professional and Technical Services</u>			
330 Other Professional Services			5,418.86
340 Technical Services			550.00
350 Security / Safety Services			19,512.75
390 Other Purchased Professional and Technical Services			2,167.00
Total Purchased Professional and Technical Services			\$27,648.61
400 <u>Purchased Property Services</u>			
410 Cleaning Services			493,893.04
420 Utility Services			75,360.09
430 Repairs and Maintenance Services			446,752.98
440 Rentals			18,655.41
460 Extermination Services			4,250.00
Total Purchased Property Services			\$1,038,911.52
500 <u>Other Purchased Services</u>			
521 Fire Insurance			58,308.00
522 Automotive Liability Insurance			9,901.00
523 General Property and Liability Insurance			108,693.00
529 Other Insurance			4,050.00
530 Communications			26,398.98
580 Travel			358.21
599 Other Miscellaneous Purchased Services			1,651.99
Total Other Purchased Services			\$209,361.18
600 <u>Supplies</u>			
610 General Supplies	155,094.51	193,130.74	348,225.25
620 Energy			538,249.74
650 Supplies & Fees – Technology Related			35,906.66
Total Supplies	\$155,094.51	\$193,130.74	\$922,381.65
800 <u>Other Objects</u>			
810 Dues and Fees			2,428.60
Total Other Objects			\$2,428.60
Total 2600 Operation and Maintenance of Plant Services	\$155,094.51	\$193,130.74	\$4,208,662.93

LEA : 113382303 Eastern Lebanon County SD

Printed 11/26/2024 10:25:50 AM

General Fund (10)

2610 Supervision of Operation and Maintenance of Plant Services	<u>Elementary</u>	<u>Secondary</u>	<u>Federal</u>	<u>Total</u>
100 <u>Personnel Services – Salaries</u>				
100 Personnel Services – Salaries				234,123.72
Total Personnel Services – Salaries				\$234,123.72
200 <u>Personnel Services – Employee Benefits</u>				
210 Group Insurance – Contracted Provider				646.50
220 Social Security Contributions				17,680.64
230 PSERS Retirement Contributions				78,819.97
260 Workers' Compensation				1,199.58
270 Group Insurance – Self-Insurance				33,409.15
299 All Other Employee Benefits				52.80
Total Personnel Services – Employee Benefits				\$131,808.64
800 <u>Other Objects</u>				
810 Dues and Fees				139.25
Total Other Objects				\$139.25
Total 2610 Supervision of Operation and Maintenance of Plant Services				\$366,071.61

LEA : 113382303 Eastern Lebanon County SD

Printed 11/26/2024 10:25:50 AM

General Fund (10)

2611 Supervision of Operation and Maintenance of Plant Services – Head of Component	<u>Elementary</u>	<u>Secondary</u>	<u>Federal</u>	<u>Total</u>
100 <u>Personnel Services – Salaries</u>				
100 Personnel Services – Salaries				234,123.72
Total Personnel Services – Salaries				\$234,123.72
200 <u>Personnel Services – Employee Benefits</u>				
210 Group Insurance – Contracted Provider				646.50
220 Social Security Contributions				17,680.64
230 PSERS Retirement Contributions				78,819.97
260 Workers' Compensation				1,199.58
270 Group Insurance – Self-Insurance				33,409.15
299 All Other Employee Benefits				52.80
Total Personnel Services – Employee Benefits				\$131,808.64
800 <u>Other Objects</u>				
810 Dues and Fees				139.25
Total Other Objects				\$139.25
Total 2611 Supervision of Operation and Maintenance of Plant Services – Head of Component				\$366,071.61

LEA : 113382303 Eastern Lebanon County SD

Printed 11/26/2024 10:25:50 AM

General Fund (10)

2620 Operation of Buildings Services	Elementary	Secondary	Federal	Total
100 <u>Personnel Services – Salaries</u>				
100 Personnel Services – Salaries				862,624.23
Total Personnel Services – Salaries				\$862,624.23
200 <u>Personnel Services – Employee Benefits</u>				
210 Group Insurance – Contracted Provider				1,129.92
220 Social Security Contributions				62,838.29
230 PSERS Retirement Contributions				287,635.91
260 Workers' Compensation				4,419.82
270 Group Insurance – Self-Insurance				246,709.37
299 All Other Employee Benefits				364.80
Total Personnel Services – Employee Benefits				\$603,098.11
300 <u>Purchased Professional and Technical Services</u>				
330 Other Professional Services				5,418.86
340 Technical Services				550.00
350 Security / Safety Services				19,512.75
390 Other Purchased Professional and Technical Services				2,167.00
Total Purchased Professional and Technical Services				\$27,648.61
400 <u>Purchased Property Services</u>				
410 Cleaning Services				493,893.04
420 Utility Services				75,360.09
430 Repairs and Maintenance Services				438,632.98
440 Rentals				18,655.41
460 Extermination Services				4,250.00
Total Purchased Property Services				\$1,030,791.52
500 <u>Other Purchased Services</u>				
521 Fire Insurance				58,308.00
522 Automotive Liability Insurance				9,901.00
523 General Property and Liability Insurance				108,693.00
529 Other Insurance				4,050.00
530 Communications				25,238.88
580 Travel				358.21
599 Other Miscellaneous Purchased Services				1,651.99
Total Other Purchased Services				\$208,201.08
600 <u>Supplies</u>				
610 General Supplies	148,190.36	186,497.34		334,687.70
620 Energy				537,399.80
650 Supplies & Fees – Technology Related				33,056.66
Total Supplies	\$148,190.36	\$186,497.34		\$905,144.16
800 <u>Other Objects</u>				
810 Dues and Fees				2,289.35
Total Other Objects				\$2,289.35
Total 2620 Operation of Buildings Services	\$148,190.36	\$186,497.34		\$3,639,797.06

LEA : 113382303 Eastern Lebanon County SD

Printed 11/26/2024 10:25:50 AM

General Fund (10)

2660 Safety and Security Services	Elementary	Secondary	Federal	Total
100 <u>Personnel Services – Salaries</u>				
100 Personnel Services – Salaries				123,974.87
Total Personnel Services – Salaries				\$123,974.87
200 <u>Personnel Services – Employee Benefits</u>				
210 Group Insurance – Contracted Provider				243.30
220 Social Security Contributions				9,463.72
230 PSERS Retirement Contributions				40,927.56
260 Workers' Compensation				635.21
270 Group Insurance – Self-Insurance				993.61
299 All Other Employee Benefits				38.40
Total Personnel Services – Employee Benefits				\$52,301.80
400 <u>Purchased Property Services</u>				
430 Repairs and Maintenance Services				8,120.00
Total Purchased Property Services				\$8,120.00
500 <u>Other Purchased Services</u>				
530 Communications				1,160.10
Total Other Purchased Services				\$1,160.10
600 <u>Supplies</u>				
610 General Supplies	6,904.15	6,633.40		13,537.55
620 Energy				849.94
650 Supplies & Fees – Technology Related				2,850.00
Total Supplies	\$6,904.15	\$6,633.40		\$17,237.49
Total 2660 Safety and Security Services	\$6,904.15	\$6,633.40		\$202,794.26

LEA : 113382303 Eastern Lebanon County SD

Printed 11/26/2024 10:25:50 AM

General Fund (10)

2700 Student Transportation Services	<u>Elementary</u>	<u>Secondary</u>	<u>Federal</u>	<u>Total</u>
300 <u>Purchased Professional and Technical Services</u>				
330 Other Professional Services				59,837.57
Total Purchased Professional and Technical Services				\$59,837.57
500 <u>Other Purchased Services</u>				
513 Contracted Carriers				2,708,618.77
516 Student Transportation Services From the IU				6,724.70
519 Student Transportation Services From Other Sources				28,706.10
580 Travel				622.23
Total Other Purchased Services				\$2,744,671.80
600 <u>Supplies</u>				
610 General Supplies				8,345.35
Total Supplies				\$8,345.35
Total 2700 Student Transportation Services				\$2,812,854.72

LEA : 113382303 Eastern Lebanon County SD

Printed 11/26/2024 10:25:50 AM

General Fund (10)

2710 Supervision of Student Transportation Services	<u>Elementary</u>	<u>Secondary</u>	<u>Federal</u>	<u>Total</u>
500 <u>Other Purchased Services</u>				
516 Student Transportation Services From the IU				6,724.70
Total Other Purchased Services				\$6,724.70
Total 2710 Supervision of Student Transportation Services				\$6,724.70

LEA : 113382303 Eastern Lebanon County SD

Printed 11/26/2024 10:25:50 AM

General Fund (10)

2711 Supervision of Student Transportation Services – Head of Component	<u>Elementary</u>	<u>Secondary</u>	<u>Federal</u>	<u>Total</u>
500 <u>Other Purchased Services</u>				
516 Student Transportation Services From the IU				6,724.70
Total Other Purchased Services				\$6,724.70
Total 2711 Supervision of Student Transportation Services – Head of Component				\$6,724.70

LEA : 113382303 Eastern Lebanon County SD

Printed 11/26/2024 10:25:50 AM

General Fund (10)

2720 Vehicle Operation Services	<u>Elementary</u>	<u>Secondary</u>	<u>Federal</u>	<u>Total</u>
300 <u>Purchased Professional and Technical Services</u>				
330 Other Professional Services				59,837.57
Total Purchased Professional and Technical Services				\$59,837.57
500 <u>Other Purchased Services</u>				
513 Contracted Carriers				2,684,059.69
519 Student Transportation Services From Other Sources				28,706.10
580 Travel				622.23
Total Other Purchased Services				\$2,713,388.02
600 <u>Supplies</u>				
610 General Supplies				8,345.35
Total Supplies				\$8,345.35
Total 2720 Vehicle Operation Services				\$2,781,570.94

LEA : 113382303 Eastern Lebanon County SD

Printed 11/26/2024 10:25:50 AM

General Fund (10)

2750 Nonpublic Transportation	<u>Elementary</u>	<u>Secondary</u>	<u>Federal</u>	<u>Total</u>
500 <u>Other Purchased Services</u>				
513 Contracted Carriers				24,559.08
Total Other Purchased Services				\$24,559.08
Total 2750 Nonpublic Transportation				\$24,559.08

LEA : 113382303 Eastern Lebanon County SD

Printed 11/26/2024 10:25:50 AM

General Fund (10)

2800 Support Services – Central	Elementary	Secondary	Federal	Total
100 <u>Personnel Services – Salaries</u>				
100 Personnel Services – Salaries				267,050.40
Total Personnel Services – Salaries				\$267,050.40
200 <u>Personnel Services – Employee Benefits</u>				
210 Group Insurance – Contracted Provider				562.96
220 Social Security Contributions				19,781.74
230 PSERS Retirement Contributions				90,185.07
240 Tuition Reimbursement				1,281.20
260 Workers' Compensation				1,368.29
270 Group Insurance – Self-Insurance				30,160.77
299 All Other Employee Benefits				2,607.54
Total Personnel Services – Employee Benefits				\$145,947.57
300 <u>Purchased Professional and Technical Services</u>				
330 Other Professional Services				11,932.79
360 Employee Training and Development Services				26,107.26
390 Other Purchased Professional and Technical Services				16,647.00
Total Purchased Professional and Technical Services				\$54,687.05
400 <u>Purchased Property Services</u>				
430 Repairs and Maintenance Services				499.00
Total Purchased Property Services				\$499.00
500 <u>Other Purchased Services</u>				
530 Communications				26,818.29
580 Travel				1,313.82
599 Other Miscellaneous Purchased Services				259.00
Total Other Purchased Services				\$28,391.11
600 <u>Supplies</u>				
610 General Supplies				7,329.46
650 Supplies & Fees – Technology Related				346,020.27
Total Supplies				\$353,349.73
800 <u>Other Objects</u>				
810 Dues and Fees				814.00
Total Other Objects				\$814.00
Total 2800 Support Services – Central				\$850,738.86

LEA : 113382303 Eastern Lebanon County SD

Printed 11/26/2024 10:25:50 AM

General Fund (10)

2820 Information Services

Elementary Secondary Federal Total

100 <u>Personnel Services – Salaries</u>				
100 Personnel Services – Salaries				168,682.40
Total Personnel Services – Salaries				\$168,682.40
200 <u>Personnel Services – Employee Benefits</u>				
210 Group Insurance – Contracted Provider				562.96
220 Social Security Contributions				12,537.57
230 PSERS Retirement Contributions				56,740.02
260 Workers' Compensation				864.28
270 Group Insurance – Self-Insurance				29,410.77
299 All Other Employee Benefits				2,607.54
Total Personnel Services – Employee Benefits				\$102,723.14
300 <u>Purchased Professional and Technical Services</u>				
390 Other Purchased Professional and Technical Services				16,647.00
Total Purchased Professional and Technical Services				\$16,647.00
400 <u>Purchased Property Services</u>				
430 Repairs and Maintenance Services				499.00
Total Purchased Property Services				\$499.00
500 <u>Other Purchased Services</u>				
530 Communications				26,295.30
580 Travel				876.62
Total Other Purchased Services				\$27,171.92
600 <u>Supplies</u>				
610 General Supplies				(2,053.55)
650 Supplies & Fees – Technology Related				346,020.27
Total Supplies				\$343,966.72
Total 2820 Information Services				\$659,690.18

LEA : 113382303 Eastern Lebanon County SD

Printed 11/26/2024 10:25:50 AM

General Fund (10)

2821 Supervision of Information Services	<u>Elementary</u>	<u>Secondary</u>	<u>Federal</u>	<u>Total</u>
100 <u>Personnel Services – Salaries</u>				
100 Personnel Services – Salaries				168,682.40
Total Personnel Services – Salaries				\$168,682.40
200 <u>Personnel Services – Employee Benefits</u>				
210 Group Insurance – Contracted Provider				562.96
220 Social Security Contributions				12,537.57
230 PSERS Retirement Contributions				56,740.02
260 Workers' Compensation				864.28
270 Group Insurance – Self-Insurance				29,410.77
299 All Other Employee Benefits				2,607.54
Total Personnel Services – Employee Benefits				\$102,723.14
300 <u>Purchased Professional and Technical Services</u>				
390 Other Purchased Professional and Technical Services				16,647.00
Total Purchased Professional and Technical Services				\$16,647.00
400 <u>Purchased Property Services</u>				
430 Repairs and Maintenance Services				499.00
Total Purchased Property Services				\$499.00
500 <u>Other Purchased Services</u>				
530 Communications				26,295.30
580 Travel				876.62
Total Other Purchased Services				\$27,171.92
600 <u>Supplies</u>				
610 General Supplies				(2,053.55)
650 Supplies & Fees – Technology Related				346,020.27
Total Supplies				\$343,966.72
Total 2821 Supervision of Information Services				\$659,690.18

LEA : 113382303 Eastern Lebanon County SD

Printed 11/26/2024 10:25:50 AM

General Fund (10)				
2830 Staff Services				
	<u>Elementary</u>	<u>Secondary</u>	<u>Federal</u>	<u>Total</u>
100 <u>Personnel Services – Salaries</u>				
100 Personnel Services – Salaries				98,368.00
Total Personnel Services – Salaries				\$98,368.00
200 <u>Personnel Services – Employee Benefits</u>				
220 Social Security Contributions				7,244.17
230 PSERS Retirement Contributions				33,445.05
240 Tuition Reimbursement				1,281.20
260 Workers' Compensation				504.01
270 Group Insurance – Self-Insurance				750.00
Total Personnel Services – Employee Benefits				\$43,224.43
300 <u>Purchased Professional and Technical Services</u>				
330 Other Professional Services				11,932.79
360 Employee Training and Development Services				26,107.26
Total Purchased Professional and Technical Services				\$38,040.05
500 <u>Other Purchased Services</u>				
530 Communications				522.99
580 Travel				437.20
599 Other Miscellaneous Purchased Services				259.00
Total Other Purchased Services				\$1,219.19
600 <u>Supplies</u>				
610 General Supplies				9,383.01
Total Supplies				\$9,383.01
800 <u>Other Objects</u>				
810 Dues and Fees				814.00
Total Other Objects				\$814.00
Total 2830 Staff Services				\$191,048.68

LEA : 113382303 Eastern Lebanon County SD

Printed 11/26/2024 10:25:50 AM

General Fund (10)				
2831 Supervision of Staff Services	<u>Elementary</u>	<u>Secondary</u>	<u>Federal</u>	<u>Total</u>
100 <u>Personnel Services – Salaries</u>				
100 Personnel Services – Salaries				98,368.00
Total Personnel Services – Salaries				\$98,368.00
200 <u>Personnel Services – Employee Benefits</u>				
220 Social Security Contributions				7,244.17
230 PSERS Retirement Contributions				33,445.05
260 Workers’ Compensation				504.01
270 Group Insurance – Self-Insurance				750.00
Total Personnel Services – Employee Benefits				\$41,943.23
500 <u>Other Purchased Services</u>				
530 Communications				522.99
580 Travel				437.20
599 Other Miscellaneous Purchased Services				259.00
Total Other Purchased Services				\$1,219.19
600 <u>Supplies</u>				
610 General Supplies				553.88
Total Supplies				\$553.88
800 <u>Other Objects</u>				
810 Dues and Fees				814.00
Total Other Objects				\$814.00
Total 2831 Supervision of Staff Services				\$142,898.30

LEA : 113382303 Eastern Lebanon County SD

Printed 11/26/2024 10:25:50 AM

General Fund (10)

2834 Staff Development Services – Non-Instructional, Certified Staff Only	<u>Elementary</u>	<u>Secondary</u>	<u>Federal</u>	<u>Total</u>
300 <u>Purchased Professional and Technical Services</u>				
360 Employee Training and Development Services				8,359.87
Total Purchased Professional and Technical Services				\$8,359.87
Total 2834 Staff Development Services – Non-Instructional, Certified Staff Only				\$8,359.87

LEA : 113382303 Eastern Lebanon County SD

Printed 11/26/2024 10:25:50 AM

General Fund (10)

2835 Health Services

Elementary Secondary Federal Total

300 Purchased Professional and Technical Services

330 Other Professional Services 11,932.79

Total Purchased Professional and Technical Services \$11,932.79

600 Supplies

610 General Supplies 8,829.13

Total Supplies \$8,829.13

Total 2835 Health Services \$20,761.92

General Fund (10)

2836 Staff Development Services – Non-Instructional, Non-Certified Staff Only	<u>Elementary</u>	<u>Secondary</u>	<u>Federal</u>	<u>Total</u>
200 <u>Personnel Services – Employee Benefits</u>				
240 Tuition Reimbursement				1,281.20
Total Personnel Services – Employee Benefits				\$1,281.20
300 <u>Purchased Professional and Technical Services</u>				
360 Employee Training and Development Services				17,747.39
Total Purchased Professional and Technical Services				\$17,747.39
Total 2836 Staff Development Services – Non-Instructional, Non-Certified Staff Only				\$19,028.59

LEA : 113382303 Eastern Lebanon County SD

Printed 11/26/2024 10:25:50 AM

General Fund (10)

2900 Other Support Services	<u>Elementary</u>	<u>Secondary</u>	<u>Federal</u>	<u>Total</u>
500 <u>Other Purchased Services</u>				
595 IU Payments By Withholding				20,198.67
Total Other Purchased Services				\$20,198.67
Total 2900 Other Support Services				\$20,198.67

LEA : 113382303 Eastern Lebanon County SD

Printed 11/26/2024 10:25:50 AM

General Fund (10)

2910 Support Services Not Listed Elsewhere In the 2000 Series

Elementary Secondary Federal Total

500 Other Purchased Services

595 IU Payments By Withholding 20,198.67

Total Other Purchased Services \$20,198.67

Total 2910 Support Services Not Listed Elsewhere In the 2000 Series \$20,198.67

LEA : 113382303 Eastern Lebanon County SD

Printed 11/26/2024 10:25:59 AM

General Fund (10)

3000 Operation of Non-Instructional Services		Total
100	<u>Personnel Services – Salaries</u>	
100	Personnel Services – Salaries	620,832.08
Total Personnel Services – Salaries		\$620,832.08
200	<u>Personnel Services – Employee Benefits</u>	
210	Group Insurance – Contracted Provider	547.48
220	Social Security Contributions	46,959.38
230	PSERS Retirement Contributions	172,890.67
260	Workers' Compensation	3,180.95
270	Group Insurance – Self-Insurance	11,028.92
299	All Other Employee Benefits	48.00
Total Personnel Services – Employee Benefits		\$234,655.40
300	<u>Purchased Professional and Technical Services</u>	
330	Other Professional Services	69,457.25
390	Other Purchased Professional and Technical Services	6,000.00
Total Purchased Professional and Technical Services		\$75,457.25
400	<u>Purchased Property Services</u>	
430	Repairs and Maintenance Services	6,889.80
Total Purchased Property Services		\$6,889.80
500	<u>Other Purchased Services</u>	
510	Student Transportation Services	96,129.25
520	Insurance – General	18,037.00
530	Communications	1,083.44
580	Travel	4,689.93
Total Other Purchased Services		\$119,939.62
600	<u>Supplies</u>	
610	General Supplies	123,085.18
620	Energy	54.85
Total Supplies		\$123,140.03
800	<u>Other Objects</u>	
810	Dues and Fees	27,876.35
Total Other Objects		\$27,876.35
Total 3000 Operation of Non-Instructional Services		\$1,208,790.53

LEA : 113382303 Eastern Lebanon County SD

Printed 11/26/2024 10:25:59 AM

General Fund (10)

3200 Student Activities

	<u>Elementary</u>	<u>Secondary</u>	<u>Federal</u>	<u>Total</u>
100 <u>Personnel Services – Salaries</u>				
100 Personnel Services – Salaries				620,832.08
Total Personnel Services – Salaries				\$620,832.08
200 <u>Personnel Services – Employee Benefits</u>				
210 Group Insurance – Contracted Provider				547.48
220 Social Security Contributions				46,959.38
230 PSERS Retirement Contributions				172,890.67
260 Workers' Compensation				3,180.95
270 Group Insurance – Self-Insurance				11,028.92
299 All Other Employee Benefits				48.00
Total Personnel Services – Employee Benefits				\$234,655.40
300 <u>Purchased Professional and Technical Services</u>				
330 Other Professional Services				69,457.25
390 Other Purchased Professional and Technical Services				6,000.00
Total Purchased Professional and Technical Services				\$75,457.25
400 <u>Purchased Property Services</u>				
430 Repairs and Maintenance Services				6,889.80
Total Purchased Property Services				\$6,889.80
500 <u>Other Purchased Services</u>				
510 Student Transportation Services				96,129.25
520 Insurance – General				18,037.00
530 Communications				1,083.44
580 Travel				4,689.93
Total Other Purchased Services				\$119,939.62
600 <u>Supplies</u>				
610 General Supplies				123,085.18
620 Energy				54.85
Total Supplies				\$123,140.03
800 <u>Other Objects</u>				
810 Dues and Fees				27,876.35
Total Other Objects				\$27,876.35
Total 3200 Student Activities				\$1,208,790.53

General Fund (10)

5000 Other Expenditures and Financing Uses		<u>Total</u>
800 <u>Other Objects</u>		
880 Refunds of Prior Years' Receipts	61,631.87	
Total Other Objects	\$61,631.87	
900 <u>Other Uses of Funds</u>		
910 Redemption of Principal	412,600.00	
932 Capital Reserve Fund Transfers Applicable To Fund 32	550,000.00	
939 Other Fund Transfers	5,109,583.46	
Total Other Uses of Funds	\$6,072,183.46	
Total 5000 Other Expenditures and Financing Uses	\$6,133,815.33	

LEA : 113382303 Eastern Lebanon County SD

Printed 11/26/2024 10:26:09 AM

General Fund (10)

5100 Debt Service / Other Expenditures and Financing Uses	<u>Elementary</u>	<u>Secondary</u>	<u>Federal</u>	<u>Total</u>
800 <u>Other Objects</u>				
880 Refunds of Prior Years' Receipts				61,631.87
Total Other Objects				\$61,631.87
900 <u>Other Uses of Funds</u>				
910 Redemption of Principal				412,600.00
Total Other Uses of Funds				\$412,600.00
Total 5100 Debt Service / Other Expenditures and Financing Uses				\$474,231.87

LEA : 113382303 Eastern Lebanon County SD

Printed 11/26/2024 10:26:09 AM

General Fund (10)

5130 Refund of Prior Year Revenues / Receipts	<u>Elementary</u>	<u>Secondary</u>	<u>Federal</u>	<u>Total</u>
800 <u>Other Objects</u>				
880 Refunds of Prior Years' Receipts				61,631.87
Total Other Objects				\$61,631.87
Total 5130 Refund of Prior Year Revenues / Receipts				\$61,631.87

LEA : 113382303 Eastern Lebanon County SD

Printed 11/26/2024 10:26:09 AM

General Fund (10)

5140 Leases and Other Right-to-Use Arrangements	<u>Elementary</u>	<u>Secondary</u>	<u>Federal</u>	<u>Total</u>
900 <u>Other Uses of Funds</u>				
910 Redemption of Principal				412,600.00
Total Other Uses of Funds				\$412,600.00
Total 5140 Leases and Other Right-to-Use Arrangements				\$412,600.00

LEA : 113382303 Eastern Lebanon County SD

Printed 11/26/2024 10:26:09 AM

General Fund (10)

5200 Interfund Transfers – Out

Elementary Secondary Federal Total

900 Other Uses of Funds

932 Capital Reserve Fund Transfers Applicable To Fund 32 550,000.00

939 Other Fund Transfers 5,109,583.46

Total Other Uses of Funds				\$5,659,583.46
Total 5200 Interfund Transfers – Out				\$5,659,583.46

LEA : 113382303 Eastern Lebanon County SD

Printed 11/26/2024 10:26:09 AM

General Fund (10)

5230 Capital Projects Fund Transfers	<u>Elementary</u>	<u>Secondary</u>	<u>Federal</u>	<u>Total</u>
900 <u>Other Uses of Funds</u>				
932 Capital Reserve Fund Transfers Applicable To Fund 32				550,000.00
Total Other Uses of Funds				\$550,000.00
Total 5230 Capital Projects Fund Transfers				\$550,000.00

LEA : 113382303 Eastern Lebanon County SD

Printed 11/26/2024 10:26:09 AM

General Fund (10)

5240 Debt Service Fund Transfers	<u>Elementary</u>	<u>Secondary</u>	<u>Federal</u>	<u>Total</u>
900 <u>Other Uses of Funds</u>				
939 Other Fund Transfers				5,109,583.46
Total Other Uses of Funds				\$5,109,583.46
Total 5240 Debt Service Fund Transfers				\$5,109,583.46

LEA : 113382303 Eastern Lebanon County SD

Printed 11/26/2024 10:25:53 AM

Capital Reserve Fund - § 1431 (32)

2000 Support Services		<u>Total</u>
300 <u>Purchased Professional and Technical Services</u>		
330 Other Professional Services		1,634.75
Total Purchased Professional and Technical Services		\$1,634.75
400 <u>Purchased Property Services</u>		
430 Repairs and Maintenance Services		175,364.00
Total Purchased Property Services		\$175,364.00
600 <u>Supplies</u>		
610 General Supplies		39,134.73
Total Supplies		\$39,134.73
700 <u>Property</u>		
752 Capital Equipment – Original and Additional		307,965.97
Total Property		\$307,965.97
Total 2000 Support Services		\$524,099.45

LEA : 113382303 Eastern Lebanon County SD

Printed 11/26/2024 10:25:53 AM

Capital Reserve Fund - § 1431 (32)

2300 Support Services – Administration

<u>Elementary</u>	<u>Secondary</u>	<u>Federal</u>	<u>Total</u>
-------------------	------------------	----------------	--------------

300 Purchased Professional and Technical Services

330 Other Professional Services			1,634.75
---------------------------------	--	--	----------

Total Purchased Professional and Technical Services			\$1,634.75
--	--	--	-------------------

Total 2300 Support Services – Administration			\$1,634.75
---	--	--	-------------------

LEA : 113382303 Eastern Lebanon County SD

Printed 11/26/2024 10:25:53 AM

Capital Reserve Fund - § 1431 (32)

2350 Legal and Accounting Services

<u>Elementary</u>	<u>Secondary</u>	<u>Federal</u>	<u>Total</u>
-------------------	------------------	----------------	--------------

300 Purchased Professional and Technical Services

330 Other Professional Services			1,634.75
---------------------------------	--	--	----------

Total Purchased Professional and Technical Services			\$1,634.75
--	--	--	-------------------

Total 2350 Legal and Accounting Services			\$1,634.75
---	--	--	-------------------

LEA : 113382303 Eastern Lebanon County SD

Printed 11/26/2024 10:25:53 AM

Capital Reserve Fund - § 1431 (32)

2600 Operation and Maintenance of Plant Services	<u>Elementary</u>	<u>Secondary</u>	<u>Federal</u>	<u>Total</u>
400 <u>Purchased Property Services</u>				
430 Repairs and Maintenance Services				175,364.00
Total Purchased Property Services				\$175,364.00
600 <u>Supplies</u>				
610 General Supplies	19,958.71	19,176.02		39,134.73
Total Supplies	\$19,958.71	\$19,176.02		\$39,134.73
700 <u>Property</u>				
752 Capital Equipment – Original and Additional				307,965.97
Total Property				\$307,965.97
Total 2600 Operation and Maintenance of Plant Services	\$19,958.71	\$19,176.02		\$522,464.70

LEA : 113382303 Eastern Lebanon County SD

Printed 11/26/2024 10:25:53 AM

Capital Reserve Fund - § 1431 (32)

2620 Operation of Buildings Services	<u>Elementary</u>	<u>Secondary</u>	<u>Federal</u>	<u>Total</u>
400 <u>Purchased Property Services</u>				
430 Repairs and Maintenance Services				175,364.00
Total Purchased Property Services				\$175,364.00
600 <u>Supplies</u>				
610 General Supplies	19,958.71	19,176.02		39,134.73
Total Supplies	\$19,958.71	\$19,176.02		\$39,134.73
700 <u>Property</u>				
752 Capital Equipment – Original and Additional				307,965.97
Total Property				\$307,965.97
Total 2620 Operation of Buildings Services	\$19,958.71	\$19,176.02		\$522,464.70

LEA : 113382303 Eastern Lebanon County SD

Printed 11/26/2024 10:26:01 AM

Capital Reserve Fund - § 1431 (32)

4000 Facilities Acquisition, Construction and Improvement Services

Total

300 Purchased Professional and Technical Services

330 Other Professional Services	7,398.03
---------------------------------	----------

Total Purchased Professional and Technical Services	\$7,398.03
---	------------

700 Property

752 Capital Equipment – Original and Additional	188,185.27
---	------------

Total Property	\$188,185.27
----------------	--------------

Total 4000 Facilities Acquisition, Construction and Improvement Services	\$195,583.30
--	--------------

LEA : 113382303 Eastern Lebanon County SD

Printed 11/26/2024 10:26:01 AM

Capital Reserve Fund - § 1431 (32)

4300 Architecture and Engineering Services / Educational Specifications Development – Original and Additional	<u>Elementary</u>	<u>Secondary</u>	<u>Federal</u>	<u>Total</u>
300 <u>Purchased Professional and Technical Services</u>				
330 Other Professional Services				7,398.03
Total Purchased Professional and Technical Services				\$7,398.03
Total 4300 Architecture and Engineering Services / Educational Specifications Development – Original and Additional				\$7,398.03

LEA : 113382303 Eastern Lebanon County SD

Printed 11/26/2024 10:26:01 AM

Capital Reserve Fund - § 1431 (32)

4600 Existing Building Improvement Services

Elementary

Secondary

Federal

Total

700 Property

752 Capital Equipment – Original and Additional

188,185.27

Total Property

\$188,185.27

Total 4600 Existing Building Improvement Services

\$188,185.27

LEA : 113382303 Eastern Lebanon County SD

Printed 11/26/2024 10:25:44 AM

Other Capital Projects Fund (39)

1000 Instruction		<u>Total</u>
600 <u>Supplies</u>		
610 General Supplies	29,888.00	
Total Supplies		\$29,888.00
Total 1000 Instruction		\$29,888.00

LEA : 113382303 Eastern Lebanon County SD

Printed 11/26/2024 10:25:44 AM

Other Capital Projects Fund (39)

1100 Regular Programs – Elementary / Secondary	<u>Elementary</u>	<u>Secondary</u>	<u>Federal</u>	<u>Total</u>
600 <u>Supplies</u>				
610 General Supplies	14,943.00	14,945.00		29,888.00
Total Supplies	\$14,943.00	\$14,945.00		\$29,888.00
Total 1100 Regular Programs – Elementary / Secondary	\$14,943.00	\$14,945.00		\$29,888.00

LEA : 113382303 Eastern Lebanon County SD

Printed 11/26/2024 10:25:44 AM

Other Capital Projects Fund (39)

1110 Regular Programs

	<u>Elementary</u>	<u>Secondary</u>	<u>Federal</u>	<u>Total</u>
600 <u>Supplies</u>				
610 General Supplies	14,943.00	14,945.00		29,888.00
Total Supplies	\$14,943.00	\$14,945.00		\$29,888.00
Total 1110 Regular Programs	\$14,943.00	\$14,945.00		\$29,888.00

LEA : 113382303 Eastern Lebanon County SD

Printed 11/26/2024 10:25:56 AM

Other Capital Projects Fund (39)

2000 Support Services		Total
400	<u>Purchased Property Services</u>	
430	Repairs and Maintenance Services	71,684.49
440	Rentals	4,000.00
Total Purchased Property Services		\$75,684.49
600	<u>Supplies</u>	
610	General Supplies	114,805.47
Total Supplies		\$114,805.47
700	<u>Property</u>	
752	Capital Equipment – Original and Additional	905,988.41
Total Property		\$905,988.41
800	<u>Other Objects</u>	
810	Dues and Fees	222,180.39
Total Other Objects		\$222,180.39
Total 2000 Support Services		\$1,318,658.76

LEA : 113382303 Eastern Lebanon County SD

Printed 11/26/2024 10:25:56 AM

Other Capital Projects Fund (39)

2300 Support Services – Administration

Elementary Secondary Federal Total

800 Other Objects

810 Dues and Fees 222,180.39

Total Other Objects \$222,180.39

Total 2300 Support Services – Administration \$222,180.39

LEA : 113382303 Eastern Lebanon County SD

Printed 11/26/2024 10:25:56 AM

Other Capital Projects Fund (39)

2390 Other Administration Services

<u>Elementary</u>	<u>Secondary</u>	<u>Federal</u>	<u>Total</u>
-------------------	------------------	----------------	--------------

800 Other Objects

810 Dues and Fees			222,180.39
-------------------	--	--	------------

Total Other Objects			\$222,180.39
----------------------------	--	--	---------------------

Total 2390 Other Administration Services			\$222,180.39
---	--	--	---------------------

LEA : 113382303 Eastern Lebanon County SD

Printed 11/26/2024 10:25:56 AM

Other Capital Projects Fund (39)

2600 Operation and Maintenance of Plant Services	<u>Elementary</u>	<u>Secondary</u>	<u>Federal</u>	<u>Total</u>
400 <u>Purchased Property Services</u>				
430 Repairs and Maintenance Services				71,684.49
440 Rentals				4,000.00
Total Purchased Property Services				\$75,684.49
600 <u>Supplies</u>				
610 General Supplies	57,402.73	57,402.74		114,805.47
Total Supplies	\$57,402.73	\$57,402.74		\$114,805.47
700 <u>Property</u>				
752 Capital Equipment – Original and Additional				905,988.41
Total Property				\$905,988.41
Total 2600 Operation and Maintenance of Plant Services	\$57,402.73	\$57,402.74		\$1,096,478.37

LEA : 113382303 Eastern Lebanon County SD

Printed 11/26/2024 10:25:56 AM

Other Capital Projects Fund (39)

2620 Operation of Buildings Services	<u>Elementary</u>	<u>Secondary</u>	<u>Federal</u>	<u>Total</u>
400 <u>Purchased Property Services</u>				
430 Repairs and Maintenance Services				71,684.49
440 Rentals				4,000.00
Total Purchased Property Services				\$75,684.49
600 <u>Supplies</u>				
610 General Supplies	57,402.73	57,402.74		114,805.47
Total Supplies	\$57,402.73	\$57,402.74		\$114,805.47
700 <u>Property</u>				
752 Capital Equipment – Original and Additional				905,988.41
Total Property				\$905,988.41
Total 2620 Operation of Buildings Services	\$57,402.73	\$57,402.74		\$1,096,478.37

LEA : 113382303 Eastern Lebanon County SD

Printed 11/26/2024 10:26:06 AM

Other Capital Projects Fund (39)

4000 Facilities Acquisition, Construction and Improvement Services		<u>Total</u>
300 <u>Purchased Professional and Technical Services</u>		
330 Other Professional Services	3,321.48	
Total Purchased Professional and Technical Services		\$3,321.48
400 <u>Purchased Property Services</u>		
450 Construction Services	14,961,306.69	
Total Purchased Property Services		\$14,961,306.69
500 <u>Other Purchased Services</u>		
520 Insurance – General	38,362.00	
Total Other Purchased Services		\$38,362.00
600 <u>Supplies</u>		
610 General Supplies	72,251.44	
Total Supplies		\$72,251.44
700 <u>Property</u>		
752 Capital Equipment – Original and Additional	314,518.59	
790 Other Property	11,061.22	
Total Property		\$325,579.81
Total 4000 Facilities Acquisition, Construction and Improvement Services		\$15,400,821.42

LEA : 113382303 Eastern Lebanon County SD

Printed 11/26/2024 10:26:06 AM

Other Capital Projects Fund (39)

4500 Building Acquisition and Construction Services – Original and Additional	<u>Elementary</u>	<u>Secondary</u>	<u>Federal</u>	<u>Total</u>
500 <u>Other Purchased Services</u>				
520 Insurance – General				38,362.00
Total Other Purchased Services				\$38,362.00
700 <u>Property</u>				
752 Capital Equipment – Original and Additional				104,438.39
Total Property				\$104,438.39
Total 4500 Building Acquisition and Construction Services – Original and Additional				\$142,800.39

LEA : 113382303 Eastern Lebanon County SD

Printed 11/26/2024 10:26:06 AM

Other Capital Projects Fund (39)

4600 Existing Building Improvement Services	<u>Elementary</u>	<u>Secondary</u>	<u>Federal</u>	<u>Total</u>
300 <u>Purchased Professional and Technical Services</u>				
330 Other Professional Services				3,321.48
Total Purchased Professional and Technical Services				\$3,321.48
400 <u>Purchased Property Services</u>				
450 Construction Services				14,961,306.69
Total Purchased Property Services				\$14,961,306.69
600 <u>Supplies</u>				
610 General Supplies				72,251.44
Total Supplies				\$72,251.44
700 <u>Property</u>				
752 Capital Equipment – Original and Additional				210,080.20
790 Other Property				11,061.22
Total Property				\$221,141.42
Total 4600 Existing Building Improvement Services				\$15,258,021.03

LEA : 113382303 Eastern Lebanon County SD

Printed 11/26/2024 10:26:13 AM

Debt Service Fund (40)

5000 Other Expenditures and Financing Uses

Total

800	<u>Other Objects</u>	
830	Interest	1,952,815.26
Total Other Objects		\$1,952,815.26
900	<u>Other Uses of Funds</u>	
910	Redemption of Principal	3,157,768.20
Total Other Uses of Funds		\$3,157,768.20
Total 5000 Other Expenditures and Financing Uses		\$5,110,583.46

LEA : 113382303 Eastern Lebanon County SD

Printed 11/26/2024 10:26:13 AM

Debt Service Fund (40)

5100 Debt Service / Other Expenditures and Financing Uses	<u>Elementary</u>	<u>Secondary</u>	<u>Federal</u>	<u>Total</u>
800 <u>Other Objects</u>				
830 Interest				1,952,815.26
Total Other Objects				\$1,952,815.26
900 <u>Other Uses of Funds</u>				
910 Redemption of Principal				3,157,768.20
Total Other Uses of Funds				\$3,157,768.20
Total 5100 Debt Service / Other Expenditures and Financing Uses				\$5,110,583.46

LEA : 113382303 Eastern Lebanon County SD

Printed 11/26/2024 10:26:13 AM

Debt Service Fund (40)

5110 Debt Service	<u>Elementary</u>	<u>Secondary</u>	<u>Federal</u>	<u>Total</u>
800 <u>Other Objects</u>				
830 Interest				1,952,815.26
Total Other Objects				\$1,952,815.26
900 <u>Other Uses of Funds</u>				
910 Redemption of Principal				3,157,768.20
Total Other Uses of Funds				\$3,157,768.20
Total 5110 Debt Service				\$5,110,583.46

LEA : 113382303 Eastern Lebanon County SD

Printed 11/26/2024 10:26:18 AM

	<u>General Fund(10)</u>	<u>Student Sponsored Activity Fund(21)</u>	<u>Public Purpose Trust(27)</u>	<u>Other Compt Approved (28)</u>	<u>Athletic / Activity(29)</u>
1000 <u>Instruction</u>					
1100 Regular Programs - Elementary / Secondary	21,692,135.71				
1200 Special Programs - Elementary / Secondary	7,862,261.97				
1300 Vocational Education	1,106,088.60				
1400 Other Instructional Programs - Elementary / Secondary	356,432.52				
Total Instruction	\$31,016,918.80				
2000 <u>Support Services</u>					
2100 Support Services - Students	2,158,949.24				
2200 Support Services - Instructional Staff	2,076,167.93				
2300 Support Services - Administration	2,494,153.96				
2400 Support Services - Pupil Health	630,853.61				
2500 Support Services - Business	680,387.54				
2600 Operation and Maintenance of Plant Services	4,208,662.93				
2700 Student Transportation Services	2,812,854.72				
2800 Support Services - Central	850,738.86				
2900 Other Support Services	20,198.67				
Total Support Services	\$15,932,967.46				
3000 <u>Operation of Non-Instructional Services</u>					
3200 Student Activities	1,208,790.53				
Total Operation of Non-Instructional Services	\$1,208,790.53				
4000 <u>Facilities Acquisition, Construction and Improvement Services</u>					
4300 Architecture and Engineering Services / Educational Specifications Development - Original and Additional					
4500 Building Acquisition and Construction Services - Original and Additional					
4600 Existing Building Improvement Services					
Total Facilities Acquisition, Construction and Improvement Services					
5000 <u>Other Expenditures and Financing Uses</u>					
5100 Debt Service / Other Expenditures and Financing Uses	474,231.87				
5200 Interfund Transfers - Out	5,659,583.46				
Total Other Expenditures and Financing Uses	\$6,133,815.33				
TOTAL ACTUAL EXPENDITURES & OTHER FINANCING USES	\$54,292,492.12				

LEA : 113382303 Eastern Lebanon County SD

Printed 11/26/2024 10:26:18 AM

	<u>Capital Reserve (690.1850)(31)</u>	<u>Capital Reserve (1431)(32)</u>	<u>Other Capital Projects Fund(39)</u>	<u>Debt Service(40)</u>	<u>Permanent(90)</u>
1000 Instruction					
1100 Regular Programs - Elementary / Secondary			29,888.00		
1200 Special Programs - Elementary / Secondary					
1300 Vocational Education					
1400 Other Instructional Programs - Elementary / Secondary					
Total Instruction			\$29,888.00		
2000 Support Services					
2100 Support Services - Students					
2200 Support Services - Instructional Staff					
2300 Support Services - Administration		1,634.75	222,180.39		
2400 Support Services - Pupil Health					
2500 Support Services - Business					
2600 Operation and Maintenance of Plant Services		522,464.70	1,096,478.37		
2700 Student Transportation Services					
2800 Support Services - Central					
2900 Other Support Services					
Total Support Services		\$524,099.45	\$1,318,658.76		
3000 Operation of Non-Instructional Services					
3200 Student Activities					
Total Operation of Non-Instructional Services					
4000 Facilities Acquisition, Construction and Improvement Services					
4300 Architecture and Engineering Services / Educational Specifications Development - Original and Additional		7,398.03			
4500 Building Acquisition and Construction Services - Original and Additional			142,800.39		
4600 Existing Building Improvement Services		188,185.27	15,258,021.03		
Total Facilities Acquisition, Construction and Improvement Services		\$195,583.30	\$15,400,821.42		
5000 Other Expenditures and Financing Uses					
5100 Debt Service / Other Expenditures and Financing Uses				5,110,583.46	
5200 Interfund Transfers - Out					
Total Other Expenditures and Financing Uses				\$5,110,583.46	
TOTAL ACTUAL EXPENDITURES & OTHER FINANCING USES		\$719,682.75	\$16,749,368.18	\$5,110,583.46	

LEA : 113382303 Eastern Lebanon County SD

Printed 11/26/2024 10:26:18 AM

	<u>Total</u>
1000 <u>Instruction</u>	
1100 Regular Programs - Elementary / Secondary	21,722,023.71
1200 Special Programs - Elementary / Secondary	7,862,261.97
1300 Vocational Education	1,106,088.60
1400 Other Instructional Programs - Elementary / Secondary	356,432.52
Total Instruction	\$31,046,806.80
2000 <u>Support Services</u>	
2100 Support Services - Students	2,158,949.24
2200 Support Services - Instructional Staff	2,076,167.93
2300 Support Services - Administration	2,717,969.10
2400 Support Services - Pupil Health	630,853.61
2500 Support Services - Business	680,387.54
2600 Operation and Maintenance of Plant Services	5,827,606.00
2700 Student Transportation Services	2,812,854.72
2800 Support Services - Central	850,738.86
2900 Other Support Services	20,198.67
Total Support Services	\$17,775,725.67
3000 <u>Operation of Non-Instructional Services</u>	
3200 Student Activities	1,208,790.53
Total Operation of Non-Instructional Services	\$1,208,790.53
4000 <u>Facilities Acquisition, Construction and Improvement Services</u>	
4300 Architecture and Engineering Services / Educational Specifications Development - Original and Additional	7,398.03
4500 Building Acquisition and Construction Services - Original and Additional	142,800.39
4600 Existing Building Improvement Services	15,446,206.30
Total Facilities Acquisition, Construction and Improvement Services	\$15,596,404.72
5000 <u>Other Expenditures and Financing Uses</u>	
5100 Debt Service / Other Expenditures and Financing Uses	5,584,815.33
5200 Interfund Transfers - Out	5,659,583.46
Total Other Expenditures and Financing Uses	\$11,244,398.79
TOTAL ACTUAL EXPENDITURES & OTHER FINANCING USES	\$76,872,126.51

LEA : 113382303 Eastern Lebanon County SD

Printed 11/26/2024 10:26:29 AM

PSERS Salary Data (Salary Data should relate to the General Fund only)

Amount	Description	Amount
	Total Salary Base for salaries subject to PSERS withholding	21,217,108.36
	Total Federally Funded salaries subject to PSERS withholding	416,115.00

Title I Expenditure Data

Amount	Description	Amount
	Expenditures Funded with Current Title I Funds	504,304.00
Total	Title I Expenditure Data	\$504,304.00

Title IV Revenue Data

Amount	Description	Amount
	Revenue from Title IV-A-1: Student Support and Academic Enrichment Grants	42,070.00

1 .	<u>Current Special Education Expenditures within Function 1000</u> See list of exclusions in the note below.	5,521,166.12
2 .	<u>Current Special Education Expenditures within Function 2000</u> See list of exclusions in the note below.	1,090,506.89
2A.	<u>Current Special Education Expenditures within Sub-Function 2100</u> This data should also be included in line 2 above. See list of exclusions in the note below.	298,397.72
2B.	<u>Current Special Education Expenditures within Sub-Function 2200</u> This data should also be included in line 2 above. See list of exclusions in the note below.	147,008.89
2C.	<u>Current Special Education Expenditures within Sub-Function 2700</u> This data should also be included in line 2 above. See list of exclusions in the note below.	505,103.40
3.	<u>Current Special Education Expenditures within Sub-Function 3100</u> See list of exclusions in the note below.	
4.	<u>Current Special Education Expenditures within Sub-Function 3200</u> See list of exclusions in the note below.	

Note: The Current Special Education Expenditure amounts for each line should be calculated as follows:

- * Include the total expenditures for special education costs from all governmental funds and the food service fund 51 for the function/sub-function requested
- * Exclude data from sub-functions: 1243,1450,1500,1600,1807,2280,2450,2750,2990
- * Exclude data from objects: 322,511,512,516,561,562,564,566,592,593,594,595,596,597,700,830,899

Benefits for Staff Relative to Collective Bargaining Agreements

	OBJECT	COVERED	NOT COVERED	TOTAL
10 General Fund				
	211 Medical Insurance			
	212 Dental Insurance			
	215 Eye Care Insurance			
	216 Prescription Insurance			
	271 Self-Insurance Medical Benefits	2,127,651.41	1,939,571.73	4,067,223.14
	272 Self-Insurance Dental Benefits	82,841.38	75,518.38	158,359.76
	275 Self-Insurance Eye Care Benefits	65,511.05	59,720.02	125,231.07
	276 Self-Insurance Prescription Benefits			
	FUND TOTAL	\$2,276,003.84	\$2,074,810.13	\$4,350,813.97
50 Enterprise Fund				
	211 Medical Insurance			
	212 Dental Insurance			
	215 Eye Care Insurance			
	216 Prescription Insurance			
	271 Self-Insurance Medical Benefits		64,044.72	64,044.72
	272 Self-Insurance Dental Benefits		3,544.72	3,544.72
	275 Self-Insurance Eye Care Benefits		1,154.95	1,154.95
	276 Self-Insurance Prescription Benefits			
	FUND TOTAL		\$68,744.39	\$68,744.39
60 Internal Service Fund	No Self Insurance data to report			
	211 Medical Insurance			
	212 Dental Insurance			
	215 Eye Care Insurance			
	216 Prescription Insurance			
	271 Self-Insurance Medical Benefits			
	272 Self-Insurance Dental Benefits			
	275 Self-Insurance Eye Care Benefits			
	276 Self-Insurance Prescription Benefits			
	FUND TOTAL			
Total of All Funds		\$2,276,003.84	\$2,143,554.52	\$4,419,558.36

LEA : 113382303 Eastern Lebanon County SD

Printed 11/26/2024 10:26:39 AM

Function	Special Education (Prior Year)	Nonspecial Education (Prior Year)	Total (Prior Year)	Special Education (Current Year)	Nonspecial Education (Current Year)	Total (Current Year)
2120 Guidance Services	156,244.56	711,780.79	868,025.35	193,151.63	879,912.98	1,073,064.61
2140 Psychological Services	84,945.87	386,975.61	471,921.48	84,676.81	385,749.91	470,426.72
2150 Speech Pathology and Audiology Services	228.89	1,042.73	1,271.62	155.82	709.83	865.65
2160 Social Work Services	20,899.34	95,208.09	116,107.43	20,413.46	92,994.63	113,408.09
2260 Instruction and Curriculum Development Services	142,975.85	651,334.44	794,310.29	147,008.89	669,707.16	816,716.05
2350 Legal and Accounting Services	35,884.97	163,475.96	199,360.93	26,443.23	120,463.60	146,906.83
2420 Medical Services	36,040.26	164,183.38	200,223.64	36,312.13	165,421.90	201,734.03
2440 Nursing Services	76,501.59	348,507.24	425,008.83	77,241.52	351,878.06	429,119.58
2700 Student Transportation Services	464,174.67	2,114,573.47	2,578,748.14	505,103.40	2,301,026.62	2,806,130.02
Total	\$1,017,896.00	\$4,637,081.71	\$5,654,977.71	\$1,090,506.89	\$4,967,864.69	\$6,058,371.58

LEA : 113382303 Eastern Lebanon County SD

	(PRINCIPAL AMOUNTS ONLY)							
<u>GOVERNMENTAL FUNDS/ ACTIVITIES</u>	Short-Term Borrowing	General Obligation Bonds/Notes	Authority Building Obligations	Leases, Other Right to Use Arrangements	Extended Term Financing Agreements	Other Long Term Debt/Liabilities	OPEB, Comp Abs, Net Pension Liab	Total
1. Debt at Beginning of Fiscal Year		65,096,000.00		1,916,759.00		493,054.00	63,920,095.00	131,425,908.00
2. Additional Debt Incurred During Year		13,775,000.00					693,756.00	14,468,756.00
3. Retirements and Repayments		3,091,000.00		412,600.00		61,632.00	310,254.00	3,875,486.00
4. Debt at End of Fiscal Year		75,780,000.00		1,504,159.00		431,422.00	64,303,597.00	142,019,178.00
5. Accreted Interest at End Of Fiscal Year								
6. Total Debt and Accreted Interest		75,780,000.00		1,504,159.00		431,422.00	64,303,597.00	142,019,178.00
7. Current Portion P&I - Due within 1 year		5,936,767.92		514,085.00		61,632.00	8,432.00	6,520,916.92
8. Interest Paid during current fiscal year		1,937,434.00						1,937,434.00

(PRINCIPAL AMOUNTS ONLY)								
<u>PROPRIETARY FUNDS</u>	Short-Term Borrowing	General Obligation Bonds/Notes	Authority Building Obligations	Leases, Other Right to Use Arrangements	Extended Term Financing Agreements	Other Long Term Debt/Liabilities	OPEB, Comp Abs, Net Pension Liab	Total
1. Debt at Beginning of Fiscal Year							1,188,060.00	1,188,060.00
2. Additional Debt Incurred During Year							12,840.00	12,840.00
3. Retirements and Repayments							5,716.00	5,716.00
4. Debt at End of Fiscal Year							1,195,184.00	1,195,184.00
5. Accreted Interest at End Of Fiscal Year								
6. Total Debt and Accreted Interest							1,195,184.00	1,195,184.00
7. Current Portion P&I - Due within 1 year								
8. Interest Paid during current fiscal year								

LEA : 113382303 Eastern Lebanon County SD

Total Principal and Interest Payments Made by Your School - All Funds

Function	Fund		Principal (910)	Principal (920)	Interest (830)	Total (Principal +Interest)	Misc Other Uses (990)
5110	10	General Fund					
5110	20	Special Revenue Funds					
5110	30	Capital Projects Funds					
5110	40	Debt Service Fund	3,157,768.20		1,952,815.26	5,110,583.46	
5110	90	Permanent Fund					
5120	10	General Fund					
5120	20	Special Revenue Funds					
5120	30	Capital Projects Funds					
5120	40	Debt Service Fund					
5140	10	General Fund	412,600.00			412,600.00	
5140	20	Special Revenue Funds					
5140	30	Capital Projects Funds					
5140	40	Debt Service Fund					
5140	90	Permanent Fund					
Total Debt Payments - Governmental Funds			\$3,570,368.20		\$1,952,815.26	\$5,523,183.46	

Function	Fund		Principal (910)	Principal (920)	Interest (830)	Total (Principal +Interest)
5110	50	Enterprise Fund				
5110	60	Internal Service Fund				
5120	50	Enterprise Fund				
5120	60	Internal Service Fund				
5140	50	Enterprise Fund				
5140	60	Internal Service Fund				
Total Debt Payments - Proprietary Funds						

LEA : 113382303 Eastern Lebanon County SD

Debt Details
Governmental Funds/ Activities

Debt Category	Debt Issue Date (MM/YYYY)	Principal Amounts Only				Current Portion Due Within One Year (Principal and Interest)	Interest Paid During Fiscal Year
		Debt at Beginning of Fiscal Year	Additions	Reductions / Repayments	Debt at End of Fiscal Year		
General Obligation Bonds/Notes – CIB	01/2024		13,775,000.00		13,775,000.00	668,761.67	
General Obligation Bonds/Notes – CIB	05/2023	8,555,000.00		5,000.00	8,550,000.00	346,300.00	95,725.00
General Obligation Bonds/Notes – CIB	04/2022	9,745,000.00		5,000.00	9,740,000.00	394,150.00	389,300.00
General Obligation Bonds/Notes – CIB	10/2021	9,745,000.00		5,000.00	9,740,000.00	394,300.00	389,350.00
General Obligation Bonds/Notes – CIB	06/2020	1,400,000.00		690,000.00	710,000.00	731,400.00	45,000.00
General Obligation Bonds/Notes – CIB	06/2020	4,160,000.00		5,000.00	4,155,000.00	99,173.75	94,249.00
General Obligation Bonds/Notes – CIB	02/2019	7,800,000.00		80,000.00	7,720,000.00	309,585.00	246,185.00
General Obligation Bonds/Notes – CIB	09/2019	6,790,000.00		1,085,000.00	5,705,000.00	1,297,045.00	145,045.00
General Obligation Bonds/Notes – CIB	06/2018	7,925,000.00		640,000.00	7,285,000.00	882,240.00	223,678.00
General Obligation Bonds/Notes – CIB	09/2018	8,890,000.00		490,000.00	8,400,000.00	813,812.50	306,675.00
General Obligation Bonds/Notes – CIB	04/2014	86,000.00		86,000.00			2,227.00
Leases and Other Right to Use Arrangements		1,916,759.00		412,600.00	1,504,159.00	514,085.00	
Other Long Term Debt/Liabilities		493,054.00		61,632.00	431,422.00	61,632.00	
Net Pension Liability		58,307,405.00	692,592.00		58,999,997.00		
Compensated Absences		1,514,796.00		310,254.00	1,204,542.00	8,432.00	
Other Post-Employment Benefits (OPEB)		4,097,894.00	1,164.00		4,099,058.00		
Totals for Debt Entered:		\$131,425,908.00	\$14,468,756.00	\$3,875,486.00	\$142,019,178.00	\$6,520,916.92	\$1,937,434.00

Bond Details
Proprietary Funds

Debt Category	Debt Issue Date (MM/YYYY)	Principal Amounts Only				Current Portion Due Within One Year (Principal and Interest)	Interest Paid During Fiscal Year
		Debt at Beginning of Fiscal Year	Additions	Reductions / Repayments	Debt at End of Fiscal Year		
Compensated Absences		26,647.00		5,716.00	20,931.00		
Net Pension Liability		1,044,595.00	12,408.00		1,057,003.00		
Other Post-Employment Benefits (OPEB)		116,818.00	432.00		117,250.00		
Totals for Debt Entered:		\$1,188,060.00	\$12,840.00	\$5,716.00	\$1,195,184.00		

LEA : 113382303 Eastern Lebanon County SD

General Fund (10)

Section 1: Tuition/Purchased Services as Reported within Expenditure Detail	Amount
Tuition Reported in General Fund Expenditures 1000-560	3,056,052.80
Purchased Services in General Fund Expenditures 1000-594 and 1000-597	867.02
Section 1 Total	\$3,056,919.82

Section 2: Tuition Paid to Institution Types During Fiscal Year	Tuition Paid For Nonspecial Education	Tuition Paid For Special Education	Total
1 1306 Institutions			
2 Institutionalized Children's Programs			
3 Juveniles Incarcerated in Adult Facilities			
4 Residential Treatment Facilities			
5 Other Local Education Agencies	15,872.40	67,159.43	83,031.83
6 Brick and Mortar Charter Schools			
7 Cyber Charter Schools	1,068,031.64	656,252.81	1,724,284.45
8 Career and Technology Centers	994,999.00		994,999.00
9 Approved Private Schools			
10 PA Chartered Schools for the Deaf and Blind			
11 Private Residential Rehabilitative Institutions			
12 Juvenile Detention Centers			
13 Special Program Jointures			
14 Other Tuition Not Included Elsewhere In This Section	100,978.72	153,625.82	254,604.54
Section 2 Total	\$2,179,881.76	\$877,038.06	\$3,056,919.82

LEA : 113382303 Eastern Lebanon County SD

Printed 11/26/2024 10:26:48 AM

Food Service / Cafeteria Operations Fund (51)

3000 Operation of Non-Instructional Services		Total
100	<u>Personnel Services – Salaries</u>	
100	Personnel Services – Salaries	370,726.58
Total Personnel Services – Salaries		\$370,726.58
200	<u>Personnel Services – Employee Benefits</u>	
210	Group Insurance – Contracted Provider	568.34
220	Social Security Contributions	27,767.24
230	PSERS Retirement Contributions	123,707.35
270	Group Insurance – Self-Insurance	68,744.39
280	Other Post-Employment Benefits (OPEB)	(6,456.00)
291	Other Retirement Plans	364.80
Total Personnel Services – Employee Benefits		\$214,696.12
300	<u>Purchased Professional and Technical Services</u>	
330	Other Professional Services	59,964.00
Total Purchased Professional and Technical Services		\$59,964.00
400	<u>Purchased Property Services</u>	
430	Repairs and Maintenance Services	13,615.62
Total Purchased Property Services		\$13,615.62
500	<u>Other Purchased Services</u>	
530	Communications	27.29
570	Food Service Management	75,217.50
580	Travel	211.54
Total Other Purchased Services		\$75,456.33
600	<u>Supplies</u>	
610	General Supplies	110,749.44
630	Food	1,082,497.56
650	Supplies & Fees – Technology Related	795.00
Total Supplies		\$1,194,042.00
Total 3000 Operation of Non-Instructional Services		\$1,928,500.65

LEA : 113382303 Eastern Lebanon County SD

Printed 11/26/2024 10:26:48 AM

Food Service / Cafeteria Operations Fund (51)

3100 Food Services	<u>Elementary</u>	<u>Secondary</u>	<u>Federal</u>	<u>Total</u>
100 <u>Personnel Services – Salaries</u>				
100 Personnel Services – Salaries				370,726.58
Total Personnel Services – Salaries				\$370,726.58
200 <u>Personnel Services – Employee Benefits</u>				
210 Group Insurance – Contracted Provider				568.34
220 Social Security Contributions				27,767.24
230 PSERS Retirement Contributions				123,707.35
270 Group Insurance – Self-Insurance				68,744.39
280 Other Post-Employment Benefits (OPEB)				(6,456.00)
291 Other Retirement Plans				364.80
Total Personnel Services – Employee Benefits				\$214,696.12
300 <u>Purchased Professional and Technical Services</u>				
330 Other Professional Services				59,964.00
Total Purchased Professional and Technical Services				\$59,964.00
400 <u>Purchased Property Services</u>				
430 Repairs and Maintenance Services				13,615.62
Total Purchased Property Services				\$13,615.62
500 <u>Other Purchased Services</u>				
530 Communications				27.29
570 Food Service Management				75,217.50
580 Travel				211.54
Total Other Purchased Services				\$75,456.33
600 <u>Supplies</u>				
610 General Supplies				110,749.44
630 Food				1,082,497.56
650 Supplies & Fees – Technology Related				795.00
Total Supplies				\$1,194,042.00
Total 3100 Food Services				\$1,928,500.65

	<u>Food Service(51)</u>	<u>Child Care Operations(52)</u>	<u>Other Enterprise(58)</u>	<u>Internal Service(60)</u>	<u>Total</u>
3000 <u>Operation of Non-Instructional Services</u>					
3100 Food Services	1,928,500.65				1,928,500.65
Total Operation of Non-Instructional Services	\$1,928,500.65				\$1,928,500.65
TOTAL ACTUAL EXPENDITURES & OTHER FINANCING USES	\$1,928,500.65				\$1,928,500.65

LEA : 113382303 Eastern Lebanon County SD

Printed 11/26/2024 10:26:58 AM

Fund	School	School Number	Local Personnel	Local Nonpersonnel	State Personnel	State Nonpersonnel	Federal Personnel	Federal Nonpersonnel	Total	Explanation
10										
	Eastern Lebanon Co MS	6612	3,879,433.26	274,174.43	1,730,660.70	122,312.43		352.83	6,006,933.65	
	Eastern Lebanon Co SHS	2740	5,703,837.94	1,200,158.95	2,544,549.05		356,927.23	73.98	9,805,547.15	
	ELCO Intermd Sch	8137	3,142,944.17	274,141.05	1,402,104.28	122,297.54	342,181.28	8,442.99	5,292,111.31	
	Fort Zeller El Sch	6611	1,801,261.03	203,816.01	803,563.69		351,510.75	6,040.04	3,166,191.52	
	Jackson El Sch	2735	1,552,122.92	184,762.23	692,420.25		243,652.87		2,672,958.27	
Total			16,079,599.32	2,137,052.67	7,173,297.97	244,609.97	1,294,272.13	14,909.84	26,943,741.90	