

EDUCATIONAL PATHWAYS



GUIDE TO SCHOOL PROGRAMS 2024-2025

beaufortschools.net

Beaufort County School District

Mission Statement

The Beaufort County School District, through a personalized learning approach, will prepare graduates who compete and succeed in an ever-changing global society and career marketplace.

Vision Statement

We will work with families and our diverse community to ensure that students perform at an internationally competitive level in a learning environment that is safe, nurturing, and engaging.

Board of Education

Christina Gwozdz, M.D., Board Chair

Col. Richard Geier, Vice Chair

Angela Middleton, Secretary

Earl Campbell

Chloe Gordon

William Smith

Victor Ney

Rachel Wisniewski, Ph.D.

Carlton Dallas

Elizabeth Hey

Ingrid Boatright



Superintendent

Frank Rodriguez, Ph.D.

Table of Contents

Message from the Superintendent	3
Procedures for Applying for program of choice.....	4
Elementary Schools.....	6
Elementary School Program Options	16
PK-8 Schools	18
Middle Schools.....	21
Middle School Program Options.....	26
High Schools.....	28
High School Program Options.....	32
Career and Technology Education.....	34
Dual Enrollment Programmatic Options.....	35
MedTech7 Magnet School Assistance Program.....	36
Virtual Learning Options.....	37
Beaufort Jasper Academy of Career Excellence.....	39
Visual and Performing Arts Program	40
Beaufort County School District Athletic Achievements.....	41
Frequently Asked Questions.....	42
School Calendars.....	45

Message from the Superintendent

Dear Parents and Guardians,

Beaufort County School District (BCSD) is the right choice for the children of Beaufort County. With numerous program of choice options, our students have a multitude of opportunities to find a learning environment that best suits their needs, interests, and abilities. We take pride in knowing that each of our program of choice options provide a high-quality level of learning that allows students to develop skills that will directly contribute to their future goals and successes.

In addition to our neighborhood schools, BCSD offers numerous programmatic options, such as Montessori, Early College, Advanced Placement, Cambridge Academy, and International Baccalaureate. We also have two new higher-education choice programs for high school students, one for select qualifying rising 9th graders in partnership with the Technical College of the Lowcountry (TCL) and another in partnership with the University of South Carolina Beaufort (USCB) for rising 10 through 12th graders who desire a career in Business and Hospitality Management. In addition, we remain proud of our robust STEAM academic initiative - the MedTech7 Magnet Program. This \$12 million grant funded program brings innovative curriculum and resources to select schools through magnet pathways in the medical and technology fields with access to state-of-the-art technology like ZSpace, Two & Three Dimensional Software, and Project Lead the Way Launch. The integration of our MedTech7 program reaffirms our commitment to empowering students to create their own educational pathways.

Beaufort County School District is the best choice for Beaufort County students. On average as a district, we are above state rates for on-time high school graduation, SAT and ACT scores, and the percentage of students achieving College or Career Readiness. The accolades and celebrations around BCSD are too numerous to list, but here are a few I am proud to share: we have 11 National Merit Scholarship Semifinalists for 2024, our 2023 graduates earned nearly \$38 million in scholarships, and Over 1500 national or state student certifications earned during the 2022-2023 school year. Additionally, as the top-paying public school district in the state of South Carolina, we attract top educators, with 67 percent holding advanced degrees.

We know that choosing a school for your child is one of the most important decisions you will make during their childhood. This program of choice catalog was designed to help you navigate this journey by providing you with the information you need to make an informed decision for the 2024-2025 school year.

We are looking forward to another exciting year, and we thank you for your continued support.

Your proud superintendent,
Frank Rodriguez, Ph.D.
Beaufort County School District

Applying for School Program Of Choice

Applications for School Programs will be available starting **March 1, 2024 on the district website: <https://www.beaufortschools.net/families/school-choiceprograms>**

All applications should be submitted electronically. **The deadline to apply is **March 31, 2024** at 5:00 PM.**

Procedures for Applying:

1. Go to <https://www.beaufortschools.net> on your computer, tablet, or smartphone.
2. Click on the "Family" tab located at the top of the page. Select "Program of choice and Choice Programs" from the menu. If you do not have access to the Internet, computer, tablet, or smartphone, please visit any BCSD school to apply. If you have any questions, please contact Yanina SarliRotti at Yanina.SarliRotti@beaufort.k12.sc.us
3. You will be notified by email of the decision by **April 15, 2024**.

Important Information About the School Programs of Choice Application Process:

- Two schools are at or above capacity and do not have availability for students outside the attendance zone to apply for school programs of choice:
HE McCracken Middle School and Pritchardville Elementary School.
- Any student who does not live in the attendance zone of their desired program of choice may apply to any school with their program of choice outside of their zoned school.
Please note: Parents must provide transportation to and from the choice school if the student does not live in the attendance zone. Seats may be limited.
- Any student who can provide documentation that s/he moved to Beaufort County, or to a different location within Beaufort County, after the March 31, 2024 deadline may apply for program of choice. The deadline for these applications is the first day of school. Programs are based upon availability.
- Beaufort County School District Employees may apply for an Employee Courtesy student transfer for their own children with Yanina SarliRotti.
- If your program of choice application is denied, you may appeal in writing by May 1, 2024 to Yanina SarliRotti at Yanina.SarliRotti@beaufort.k12.sc.us

Beaufort County's School Districts program of choice options come in two forms:

- School-within-a-school: A traditional curriculum is offered for students who live in that attendance zone. That traditional curriculum includes a Science, Technology, Engineering and Mathematics (STEM) focus as well as a core in the arts, world languages, and technology. In addition to that traditional curriculum, the school also offers a specific "choice option" available to students who live both inside and outside the regular attendance zone. Example: Beaufort Elementary School offers a traditional elementary grades curriculum, but also offers two "choice options" in Montessori and AMES.
- School-wide: All enrolled students participate in a focused instructional method. Example: Lady's Island Elementary engages all its students with a school-wide arts-infused approach.

Applying for School Program Of Choice

2024 Important Dates

March 1	Programs of choice applications are available on the district website
March 31	Programs of choice applications are due by 5pm
April 15	Programs of choice decisions will be emailed to families
May 1	Decision appeals must be submitted to Yanina SarliRotti at Yanina.SarliRotti@beaufort.k12.sc.us by 5pm
First Day Of School/New Residence Aug. 7, 2024	Documentation is required that you moved to Beaufort County - or to a different location within Beaufort County - after the deadline but before the first day of school, may apply for school program of choice.



Elementary Schools

Elementary Schools Program Of Choice

	Beaufort	Bluffton	Broad River	Coosa	Hilton Head	Hilton Head ECC	Hilton Head SCA	Lady's Island	MC Riley	Mossy Oaks MedTech7 Magnet	Okatie	Port Royal	Pritchardville	Red Cedar	River Ridge	Robert Smalls	Shanklin	St. Helena	Whale Branch (K-5) MedTech7 Magnet
Acceleration Elementary Academy		✓																	
Advanced Math, Engineering and Science Academy (AMES)	✓												✓						
Arts Integration							✓	✓		✓									✓
Computer Science		✓																	
Dual Language			✓		✓														
International Baccalaureate (IB)					✓														
Leader in Me				✓				✓	✓							✓	✓	✓	✓
Learning Through Leadership											✓								
MedTech7										✓									✓
Montessori	✓														✓				
Project Based Learning				✓		✓						✓	✓	✓					
Project Lead the Way Launch	✓			✓	✓					✓		✓		✓	✓				✓



Available for students outside the attendance zone to apply for Program of Choice



Only available to students within that school's attendance zone

Virtual Learning:

All BCSD students grades 5-12 have the option to take courses virtually while maintaining the benefits of school enrollment. See pages **37-38** of this booklet for more information about Virtual Learning Options.

Elementary Schools

Beaufort Elementary School

*Available Programs of Choice: **Advanced Math, Engineering and Science Academy (AMES), Montessori, and PLTW Launch***

Beaufort Elementary (BES), *rated Excellent on the 2022 South Carolina School Report Card*, empowers students in developing the world class skills of the Profile of a South Carolina Graduate by providing differentiated instruction and appropriate interventions to meet each child's needs on an individual basis. BES challenges students each day to reach their full potential as learners and citizens. BES provides multiple programs to provide students with diverse experiences – academically and socially.

BES is a recipient benefitting from the U.S. Department of Defense Education Activity (DoDEA) grant. This grant provides additional college and career ready resources to successfully expand the BES STEM program.

As a certified STEM school and designated ABC school, BES is very excited about the multiple opportunities BES students have to share and develop their many talents in science, technology, engineering, art, and math. BES teachers work collaboratively to provide BES students with a comprehensive program that educates the whole child through the use of hands-on and project-based instruction that engages and motivates learners. STEM/STEAM learning is integrated throughout the curriculum, allowing students to develop deeper understanding of content. With BES' emphasis on character development, students are moving forward in their quest to be responsible citizens who will go out each day and make a difference.

For more information visit: <https://bes.beaufortschools.net/>

Bluffton Elementary School

*Available Programs of Choice: **Computer Science and Acceleration Elementary Academy***

Bluffton Elementary (BLES) realized the need for student development of 21st century skills with a focus on computer science in order to prepare learners for future employment and to equip them with the skills needed to be productive, responsible citizens. This need has led to the change in BLES' school of choice to Computer Science. All students in Beaufort County School District have the opportunity to opt into the school for BLES' specific program. The program helps students learn the skills needed to succeed in a digitally dominant world and develop the world class skills based on the Profile of the South Carolina Graduate.

Bluffton Elementary's Accelerated Academy is a more challenging educational experience for Gifted and Talented students. It is a rigorous program that accelerates the students through a standards-based curriculum, "Faster, Farther and Sooner." Teachers work with students in 3rd through 5th grade who are Gifted and Talented qualified and are considered in the 95 percentile and above academically.

For more information visit: <https://bles.beaufortschools.net/>

Broad River Elementary School

*Available Programs of Choice: **Dual-Language: Spanish or Mandarin Chinese***

Broad River Elementary (BRES) prepares students to "Learn Locally to Lead Globally" in accordance with the South Carolina Graduate Profile through small class sizes and the following initiatives:

World Class Knowledge: Rigorous instruction for BRES students is aligned with the South Carolina State Standards. Students in grades K-5 can participate in language programs with the target languages of Mandarin Chinese or Spanish. BRES' STEM lab provides students in Pre-K thru 5 the opportunity for additional instruction in science and engineering weekly. Students receive intervention and enrichment opportunities in reading and math from certified math and reading tutors. BRES implements Scholastic Literacy and Ready Math schoolwide to provide a guaranteed and viable reading and math curriculum.

World Class Skills: BRES has a student-run news show that is broadcast live daily. The students are using sophisticated software, camera systems, green screen, and more. Students in grades K-5 have a scheduled time weekly in the Media Center where they learn to research questions and apply their knowledge through computer generated presentations. In each classroom, cooperative learning is a staple. Students are assigned jobs in their groups and must work together in accordance to the norms set by them and their teachers. Arts programs tap into student creativity through many awesome projects. BRES is a recipient benefitting from the U.S. Department of Defense Education Activity (DoDEA) grant. This grant provides additional college and career ready resources to successfully expand the BRES STEM program.

For more information visit: <https://bres.beaufortschools.net/>

Coosa Elementary School

*Available Programs of Choice: **Leader In Me, Project-Based Learning, and PLTW Launch***

Coosa Elementary School (CES), recognized as a 2023 National Blue Ribbon School and rated *Excellent on the 2023 South Carolina School Report Card*, fosters and promotes an environment where students are actively engaged in 21st century learning. CES is honored to be the flagship Leader in Me school in Beaufort County, the 12th elementary school in South Carolina, and one of the Leader in Me schools internationally to be honored with Lighthouse status and Lighthouse Academic Honor Roll.

For years, CES has grown its STEM (Science, Technology, Engineering, and Math) focus to include a STEM Lab, Competitive Robotics Team, and STEM infused lessons across all content areas. Through these additions, students further develop problem solving and critical thinking skills. CES implements Project Lead the Way (PLTW), a Project Based curriculum focused on hands-on, real-world activities, projects, and problems that help students understand how to transfer knowledge learned in the classroom to everyday life. CES is proud of its large military population and is excited to be a recipient benefitting from the U.S. Department of Defense Education Activity (DoDEA) grant. This grant provides additional college and career ready resources to successfully expand the CES STEM program. Purposeful Play is implemented in all CES pre-K and kindergarten classrooms. Through purposeful play, students can explore, discover, solve problems, and experiment in playful and imaginative ways. These programs of choice work together to provide opportunities that allow CES students to demonstrate leadership skills while preparing them to be successful citizens—now and in the future. CES is growing great leaders who dream more, learn more, achieve more, and become more.

For more information visit: <https://ces.beaufortschools.net/>

Hilton Head Island Elementary School

*Available Programs of Choice: **Dual Language: Spanish or Mandarin Chinese, IB Primary Years Programme, and PLTW Launch***

Hilton Head Island Elementary School (HHIES) students are academically challenged by a qualified and dedicated faculty through a rigorous curriculum. High expectations are the standard. HHIES aims to help students reach and exceed grade level standards. HHIES believes in a shared responsibility between involved parents, talented teachers, a supportive community and an administration team who believes that all children can learn. As an IB World School, HHIES' Primary Years Programme (PYP) focuses on the development of the whole child as an inquirer both in school and in the world beyond.

Students are engaged in an inquiry-based and Science, Technology, Engineering, and Math (STEM) infused curriculum using critical thinking and problem solving skills through collaborative activities that foster teamwork. Oral and written communication skills are showcased through various venues such as media and the use of the latest technology. Students are provided learning experiences that will strengthen their study skills and give them tools for their toolbox so that they can be most successful. HHIES strives to ensure that all students are engaged in learning experiences that promote a love for learning and a thirst for knowledge.

For more information visit: <https://hhie.beaufortschools.net/>

Hilton Head Island School for the Creative Arts

*Available Program of Choice: **Arts Integration***

Hilton Head Island School for the Creative Arts (HHISCA) is dedicated to leading HHISCA students down the path of developing strong world class skills. As an Arts in Basic Curriculum (ABC) School of Distinction, the HHISCA vision includes rigorous arts lessons taught by instructors certified in Art, Music, Dance, and Drama/Theater. HHISCA partners with the Arts Center of Coastal Carolina. Classrooms work with Artists in Residence on units of study directly correlate with the academic content standards. HHISCA students also have opportunities to experience academic field trips that enhance their learning.

HHISCA teachers receive training regarding best practices in arts-infusion within the curriculum, learning how the arts support student engagement and facilitate self-expression, collaboration, teamwork, and skills of creativity.

HHISCA celebrates continued progress within the arts-infused school of choice, and are committed to the vision of providing a safe, nurturing, rigorous, and arts-infused environment that will promote preparedness of all children for a successful future following graduation.

For more information visit: <https://hhisca.beaufortschools.net/>

Joseph Shanklin Elementary School

*Available Program of Choice: **Leader in Me***

Joseph Shanklin Elementary School (JSES) is empowering all students to develop the world-class skills, life, and career characteristics of the Profile of the South Carolina Graduate. JSES provides an innovative learning environment that focuses on leadership and developing self-directed learners. JSES provides such an environment by creating a culture of leadership, living out the JSES school motto: “Learn. Lead. Make a difference”. School administration, teachers, and students collaborate to develop school-wide, grade level, class, and individual goals centered around literacy and mathematics. Throughout the year, staff and students track the progress of the JSES Wildly Important Goals and celebrate growth and achievement along the way. This process of goal setting and progress monitoring teaches students personal accountability and develops self-directed learners. Developing a culture of leadership at JSES is about inspiring students to be leaders and take ownership of their learning.

For more information visit: <https://ses.beaufortschools.net/>

Lady's Island Elementary School

*Available Programs of Choice:: **Arts Integration and Leader in Me***

Lady's Island Elementary (LIES) has been teaching and learning through the visual and performing arts since 2000 and is now on a leadership journey to becoming a Leader In Me Lighthouse School. Certified arts specialists in choral and instrumental music, dance, visual and media arts, and volunteer community educators in theater provide engaging lessons in the arts disciplines and collaborate with grade level teachers to bring core content to life using the arts. As a Leader in Me school, LIES students learn, live, feel and see the 7 Habits of Highly Effective Kids in order to develop into global leaders.

LIES is a recipient benefitting from the U.S. Department of Defense Education Activity (DoDEA) grant. This grant provides additional college and career ready resources to successfully expand the LIES STEM program.

Visit LIES to see small class sizes with students demonstrating world-class skills using an art form. You may hear students singing about the rock cycle, acting out short stories, having a poetry slam, imitating historical figures in full costume, and using dance methods to create geometric shapes in math. They demonstrate leadership skills by co-planning their own performances, taking responsibility for helping operate the school, and serving on committees to provide student voice. The school is recognized by the Arts in Basic Curriculum Institute as a School of Merit and receives funding from the South Carolina Arts Commission to provide artists-in-residence, art supplies, field trips, and professional development for teachers.

For more information visit: <https://lies.beaufortschools.net/>

Michael C. Riley Elementary School

*Available Program of Choice: **Leader in Me***

Michael C. Riley Elementary's (MCRES) goal is to help all students develop the world class skills of the Profile of the South Carolina Graduate by providing differentiated instruction and appropriate interventions to meet each child's needs on an individual basis. All classrooms focus on delivering effective daily instruction and a coherent, viable curriculum that are driven by state standards and school data. 21st century skills such as critical thinking, problem-solving, communication, collaboration, creativity, and innovation are part of MCRES daily instruction.

MCRES' core beliefs include bringing out the leadership potential of each child by incorporating a learning leadership model, The Leader in Me. Through examination and reflection, MCRES has identified strategies and systems to build positive choices through the seven effective habits, roles and participation models to demonstrate leadership, and accountability systems to measure and evaluate individual, classroom, grade level, and school wide data points. In July 2022, MCRES was notified of reaccreditation status as a Leader in Me Lighthouse School, and in the spring of 2021, MCRES received recertification of its status as a STEM school through Cognia.

For more information visit: <https://mcres.beaufortschools.net/>

Mossy Oaks Elementary School MedTech7 Medical Magnet

*Available Programs of Choice: **Arts Integration, MedTech7 Medical, and PLTW Launch***

At Mossy Oaks Elementary School (MOES), students develop world-class skills and characteristics in small classes to expand their life and career capabilities as described in the South Carolina Profile of the Graduate. MOES is proud to be a Title One school whose purpose is to expand students' understanding of the world and increase expertise in STEM and MedTech7 curriculum. MOES also features the Project Lead the Way Launch curriculum for all students. MOES was recertified in 2021-2022 as an Arts Focused School, offering an approach to help students explore their strengths and interests while expanding their competencies.

The success of MOES can be attributed to the teamwork of students, parents, community members, and staff. This coalition fostered the development of an outdoor classroom for students which is now designated a Certified Wildlife Habitat by the National Wildlife Federation. As MOES builds its repertoire of arts-infused, STEM/STEAM lessons, students become prepared for successful careers in many fields.

For more information visit: <https://moes.beaufortschools.net/>

Okatie Elementary School

*Available Program of Choice- **Learning Through Leadership***

Okatie Elementary (OES), *rated Excellent on the 2022 and 2023 South Carolina School Report Card*, is committed to supporting all students in developing the world-class skills and life and career characteristics of the Profile of the South Carolina Graduate by providing a rigorous academic program that supports the success of all students and encourages future leaders. OES creates student centered learning environments, supports community service projects, integrates real-world learning experiences, and hosts fine arts and leadership clubs in a caring and nurturing atmosphere. As a Cognia STEM certified school, OES is developing 21st Century Graduate skills through application of critical thinking and decision-making which will positively impact their world and future. OES students take ownership of their learning by making Wise Decisions, Showing Initiative, Being Noble, Generous, and Successful (W.I.N.G.S.). OES strongly believes that all students should be given the opportunity to learn through an integrated STEM curriculum. As a Learning Through Leadership school, OES looks for ways to develop strong leadership skills through goal setting, communication, and student accountability. OES embraces a nurturing school family by building strong partnerships with families and the Okatie community. OES always encourages students to “Spread their Wings, and Learn New Things.”

For more information visit: <https://oes.beaufortschools.net/>

Port Royal Elementary School

*Available Programs of Choice: **Project-Based Learning and PLTW Launch***

Port Royal Elementary (PRES) supports all students with small class sizes and by providing South Carolina standards-based instruction that focuses on continuous growth and development. PRES is a recipient benefitting from the U.S. Department of Defense Education Activity (DoDEA) grant. This grant provides additional college and career ready resources to successfully expand the PRES Science, Technology, Engineering, and Math (STEM) program. Educators provide differentiated instruction with appropriate interventions and enrichment opportunities to meet each student’s needs. PRES' mission is to educate, empower, and engage students through cooperation, communication, community involvement, challenging and innovative curriculum, and a safe environment. Port Royal Elementary uses Project Lead the Way Launch curriculum units to ignite the Next Generation Science standards, giving students access to hands-on, real-world learning. These units of instruction introduce students to science, engineering, and biomedical science pathways. Along with Project Lead the Way units, PRES utilizes a STEM lab to encourage students to build skills in problem-solving and critical thinking by solving challenges using the engineering design process. These projects and STEM experiences provide students opportunities to work collaboratively, foster creativity, and strengthen communication skills. As Port Royal Elementary School continues to focus on the final destination... excellence! PRES' goal is to continue to move forward; becoming stronger today than yesterday.

For more information visit: <https://pres.beaufortschools.net/>

Pritchardville Elementary School

*Available Programs of Choice - **available only to students zoned for PVES: Project-Based Learning and Advanced Math, Engineering and Science Academy (AMES)***

Pritchardville Elementary School (PVES) a Blue Ribbon School of Excellence, is a recipient benefitting from the U.S. Department of Defense Education Activity (DoDEA) grant. PVES is empowering students to develop the world class skills of the Profile of the South Carolina Graduate by focusing on the 4 Cs: critical thinking, communication, collaboration, and creativity. We are a Cognia Science, Technology, Engineering and Math (STEM) accredited school at the elementary level. Cognia STEM schools complete a rigorous review process that has as a focus STEM integration throughout core subject areas of Math, Language Arts, Science, and Social Studies. The 4 Cs are embedded in STEM integration across content areas through authentic projects that engage students at all levels. Curriculum from Project Based Learning in Grades K thru 5, and the Advanced Mathematics Engineering and Science (AMES) Program for identified Gifted and Talented students encourage students to “learn by doing real world problem solving” with a STEM focus.

For more information visit: <https://pves.beaufortschools.net/>

Red Cedar Elementary School

*Available Programs of Choice: **Project-Based Learning and PLTW Launch***

At Red Cedar Elementary (RCES), rated *Excellent on the 2022 and 2023 South Carolina School Report Cards*, the foundational philosophy is to do "whatever it takes" to ensure students are successful. RCES works hard to provide support for those who need it, challenge for those who grow with it, and enrichment for those who flourish with it. RCES' Project-Based Learning and Purposeful Play approaches empower students to be in charge of their learning through hands-on individualized projects, and allows students to apply their learning in real-world scenarios.

As a Cognia Science, Technology, Engineering and Math (STEM) certified school, RCES works to ensure all students receive highly effective instruction in their classrooms.

Teachers participate in professional development (PD) and professional learning communities (PLCs) through which they learn new strategies, study standards and curriculum, and analyze student work to improve instruction.

RCES supports the whole child by providing many enrichment opportunities. For example, Foxes Jam is a program for beginning and intermediate string and wind instruments, beginning in the third grade. RCES has a wide variety of clubs, including a cooking club, First Tee, and a celebrated Foxes Rock Drum and Dance Team. RCES' student support team advises staff in meeting the needs of RCES students.

For more information visit: <https://rces.beaufortschools.net/>

St. Helena Elementary School

*Available Program of Choice: **Leader in Me***

St. Helena Elementary School (SHES) continues to work towards its vision of developing lifelong learners that lead in the community, succeed in the school, and achieve their dreams. SHES is a Leader in Me Lighthouse School. SHES' Leader in Me model provides students with opportunities to build their personal leadership skills.

SHES is helping students develop world class skills, along with the life and career characteristics of the Profile of a South Carolina graduate by continuing to implement the Leader in Me process. Teachers use multiple data points to formally and informally assess students, set high expectations, and individualize target goals for student achievement growth. We continuously strive to focus on family-friendly service and improve communication with families, staff, and the community. It is through the support of dedicated staff, parents and numerous volunteers from the community that SHES is cultivating growth in all students and empowering them to lead, achieve, and succeed.

For more information visit: <https://shes.beaufortschools.net/>

Whale Branch Elementary School MedTech7 Technology Magnet

*Available Programs of Choice: **MedTech7, Leader in Me, Arts Integration, and PLTW Launch***

At Whale Branch Elementary School (WBES), students develop world-class skills and characteristics to expand their life and career capabilities as proposed in the South Carolina Profile of the Graduate. WBES uses the Leader in Me framework to enhance school culture, which enables students to determine their strengths and responsibilities while expanding their competencies. WBES is proud to be a MedTech7 school, providing a technology focus along with arts integration for all students. Project Lead the Way Launch provides students with technology focused real-world experiences for students to prepare them for success in the education and beyond.

WBES' high expectations for learning and development challenges both teachers and students. Highly-trained instructional coaches and master teachers engage teachers with innovative practices in weekly professional development activities. WBES determines goals and explores strategies collaboratively to improve the educational program for students.

For more information visit: <https://wbес.beaufortschools.net/>



Elementary School Program Of Choice Options

Acceleration Elementary Academy -*Located at Bluffton Elementary School*

Acceleration Elementary Academy is a strategy that allows a student to progress through school at a faster rate. In an accelerated model, a student can complete their elementary learning years at a younger age. For this program of choice, specific qualifications will be required and can be discussed more in depth upon interest.

Advanced Math, Engineering and Science Academy (AMES) -*Located at Beaufort and Pritchardville Elementary Schools*

AMES is a program based on rigorous math and science foundational skills taught through the use of science and engineering projects. The AMES learning environment is designed to actively engage students in exploration, discovery, experimentation, and mastery of standards. For this program of choice, specific qualifications will be required and can be discussed more in depth upon interest.

Arts Integration -*Located at Hilton Head School for the Creative Arts, Lady's Island, Mossy Oaks Elementary Schools, and Whale Branch Elementary*

Arts Integration programs focus on providing extensive opportunities for all students to learn through creative instructional approaches and to express themselves creatively in the arts. The arts curriculum provides students with a creative learning environment that includes performances, exhibitions of artwork and special performing groups.

For more information visit: <https://www.abcinstitutesc.org/>

Computer Science -*Located at Bluffton Elementary School*

Computer Science is an immersive program that places emphasis on the use of technology to support learning and creative expression. Students develop skills needed to thrive in a digital world.

Dual-Language -*Located at Broad River and Hilton Head Island Elementary Schools*

Dual-Language is a form of education in which students are taught literacy and content in two different languages during the school day. Students have the advantage of learning required subject area content and becoming fluent in a second language at the same time. Chinese and Spanish dual language programs are currently offered.

International Baccalaureate Program (IB) - Primary Years Programme (PYP)

Located at Hilton Head Island Elementary School

The IB Primary Years Programme (PYP) for children aged 3-12 nurtures and develops young students as caring, active participants in a lifelong journey of learning. The PYP offers an inquiry-based, transdisciplinary curriculum framework that builds conceptual understanding. The PYP has evolved to become a world leader in future-focused education.

For more information visit: <https://www.ibo.org/>

Elementary School Program Of Choice Options

Leader in Me -Located at ***Coosa, Lady's Island, M.C. Riley, Robert Smalls Leadership Academy, Shanklin, St. Helena, and Whale Branch Elementary Schools***

Leader in Me® is a whole-school transformation model and process developed in partnership with educators that empowers students with the leadership and life skills they need to thrive in the 21st century. It is based on principles and practices of personal, interpersonal and organizational effectiveness, and upon the powerful premise that every child possesses unique strengths and has the ability to be a leader. visit: <https://www.leaderinme.org/>

Learning Through Leadership -Located at ***Okatie Elementary***

Learning through Leadership schools provide a comprehensive learning model through student leadership development. Learning through Leadership program goals include: fostering a student's self-esteem, discipline, responsibility, confidence, and creativity. Students will learn to set and meet goals, effectively cooperate with people of various backgrounds and cultures, and resolve conflicts and solve problems.

MedTech7 Magnet School Programs -Located at ***Mossy Oaks and Whale Branch Elementary***

MedTech7 magnet pathways are offered in two clusters: Whale Branch and Beaufort. All MedTech7 schools offer schoolwide Arts Integrated learning. The Beaufort cluster offers Medical pathways in Biomedical Science, Allied Health Science, and Sports Medicine. The Whale Branch cluster offers Technology pathways in Game & Interactive Media Design, Cybersecurity, and Networking pathways. MedTech7 provides theme-based pathways of study which allows students to develop the knowledge and skills necessary to pursue careers and/or post-secondary education. visit: <https://www.medtech7.com>

Montessori -Located at ***Beaufort Elementary School and River Ridge Academy***

Montessori education supports children's natural development and encourages them to develop their creativity, think critically, solve problems, and manage their own time. Montessori features mixed-age classrooms, allows students to make individual choices about their research and work, and gives them time for uninterrupted concentration. Montessori students enjoy their learning so they can better remember what they learn.

Project Based Learning -Located at ***Coosa, Hilton Head ECC, Port Royal, Pritchardville, and Red Cedar Elementary***

Project Based Learning provides an engaging, personalized learning environment where students are encouraged to achieve success and develop a love for learning. Through Project Based Learning, students engage in hands-on activities that are reflective of real-world challenges. This program encourages students to further explore subject areas and make meaningful connections between past knowledge and new concepts.

Project Lead the Way Launch (PLTW) -Located at ***Beaufort, Coosa, Hilton Head, Mossy Oaks, Port Royal, Red Cedar, River Ridge Academy, and Whale Branch Elementary***

Project Lead the Way (PLTW) places an emphasis on curriculum that encourages hands-on engagement, problem solving, and the use of technology for research, collaboration, and project presentation. Students apply STEM knowledge and employ critical thinking skills as they learn and discover. visit: <https://www.pltw.org/our-programs/pltw-launch>

PK-8 Schools

PK-8 Schools

River Ridge Academy

*Available Programs of Choice: **Montessori and Project Lead the Way Launch (K-5)***

At River Ridge Academy (RRA), *rated Excellent on the 2022 South Carolina School Report Card for grades 6-8*, is working to develop the world class skills of the Profile of the South Carolina Graduate by focusing on the “whole-child”. RRA provides programmatic options for student choice through a Montessori program. Students in grades K-5 have daily instruction in Project Lead the Way Launch, a national pre-engineering curriculum. At the elementary level, RRA offers two STEM course offerings, Engineering is Elementary and LEGO lab to teach design thinking, collaboration, and communication skills. In grades 6-8 students are able to take classes within the Project Lead the Way Program. RRA offers classes such as Flight and Space, Medical Detectives, Automation and Robotics, Design and Modeling, and Computer Science for Innovators and Makers. Many after school clubs support the STEM program such as VEX Robotics, Green Steps, the art and gardening club, and Young Astronauts.

Since opening in August 2015, staff at RRA have developed a culture of learning that supports “whole-child” development. RRA empowers students to act upon the world and make a difference in their community. RRA students and families appreciate the connections and positive relationships established throughout the school community.

For more information visit: <https://rra.beaufortschools.net/>

Riverview Charter School

Riverview’s mission is to create a small, diverse learning community that actively engages students in meaningful and innovative learning experiences. Emphasizing “learning by doing”, family and community involvement, and engaged citizenship, Riverview is committed to nurturing the whole child and preparing each student for a global society.

At Riverview Charter School, students are receiving a high quality, well rounded education. Using hands-on learning and teaching the “whole child”, they are learning much more than reading, writing and arithmetic. They are learning Core Values: Mindfulness, Perseverance, Stewardship, Integrity, Empathy, Cooperation, and Gratitude. They are learning Foreign Languages (starting in Kindergarten), Technology (with Apple computers and Smart Boards), the importance of healthy diets (natural, sustainable, local, organic), community (feeding the hungry through Service Learning Projects) and much more. Riverview offers tuition free assistance, transportation, free & reduced lunch, and before & after school care.

Riverview Charter School is Beaufort County’s first public charter school and opened in August 2009. It is sponsored by the Beaufort County School District and as with all public schools, there is no tuition fee. There is also no pre-admission testing or interview required for students. Riverview enrolls students in Kindergarten through 8th grade. Each class has four homerooms with a maximum of 20 students in each homeroom. Applications are accepted each year from January 1 - 31 for the following school year and available seats are filled via public lottery.

The school is open to all Beaufort County students and is led by a Distributed Leadership Team, including a School Director as well as directors of operations, curriculum, instruction and assessment. Riverview is a non-profit corporation and is governed by a Board of Directors who are elected annually by the parents and faculty of the school, in keeping with the South Carolina charter school law.

For more information, please visit <https://riverviewcharterschool.org/>

Robert Smalls Leadership Academy

*Available Program of Choice: **Leader in Me***

Welcome to Robert Smalls Leadership Academy, where we believe in nurturing the leaders of tomorrow through a transformative educational experience. Our academy, named after the courageous Civil War hero Robert Smalls, is dedicated to instilling leadership skills in our students from an early age. At the heart of our approach is the renowned Leader in Me program, which empowers students with the essential skills and habits necessary for personal and academic success. We understand that as parents, you are seeking an environment that not only educates but also cultivates leadership qualities in your child.

At Robert Smalls Leadership Academy, the Leader in Me program is seamlessly integrated into every aspect of our curriculum, fostering a culture of responsibility, goal setting, and teamwork. We believe in unleashing the potential within each student, teaching them to take initiative, make responsible choices, and develop a strong sense of self-confidence. Our dedicated educators work collaboratively with students, guiding them through the seven habits of highly effective people, creating an environment that promotes both academic excellence and character development. By choosing Robert Smalls Leadership Academy, you are providing your child with a unique educational experience that goes beyond traditional learning, preparing them to excel not only in the classroom but also in the challenges of life as future leaders.

For more information visit: <https://rsla.beaufortschools.net/>



Middle Schools

Middle Schools Program Of Choice

	Beaufort MedTech7 Magnet	Bluffton	HE McCracken	Hilton Head	Lady's Island MedTech7 Magnet	River Ridge	Robert Smalls	Whale Branch MedTech7 Magnet
Arts Integration	✓		✗		✓			✓
International Baccalaureate (IB)				✓				
Leader in Me							✓	
Learning Through Leadership		✓						
MedTech7 Medical Magnet	✓				✓			
MedTech7 Technology Magnet								✓
Montessori						✓		
Project Lead the Way Gateway	✗	✗	✗	✗	✗	✗	✗	✗
AVID	✓							



Available for students outside the attendance zone to apply for Program of Choice



Only available to students within that school's attendance zone

Virtual Learning:

All BCSD students grades 5-12 have the option to take courses virtually while maintaining the benefits of school enrollment. See pages **37-38** of this booklet for more information about Virtual Learning Options.

Middle Schools

Beaufort Middle School MedTech7 Medical Magnet

*Available Programs of Choice: **AVID, Arts Integration, PLTW Gateway, and MedTech7 Medical***

Beaufort Middle School (BMS) supports and assists all students through a focus on critical thinking, communication, collaboration, creativity, and college and career readiness. This focus enables students to develop character, interpersonal skills, and self-direction.

BMS is proud to implement AVID, Advancement via Individual Determination, an academic advancement program that serves over two million students nationwide. AVID's mission is to "prepare all students for college and career readiness and success in a global society." At BMS, AVID is implemented across all three grade levels in every classroom including core classes and electives. Focused on preparing students to be self-sufficient scholars, AVID includes a foundation of organization, goal setting, interdisciplinary literacy, and college and career readiness. BMS AVID provides a sustainable framework that facilitates and supports student achievement by creating an accelerated pathway by which motivated students may attain up to seven high school credits while still in the middle school setting. Students who are committed to their academic growth and interested in becoming an AVID scholar must apply and interview for a position in the cohort. Goal setting, progress monitoring, and exploring opportunities beyond high school make learning relevant for each student and empowers them to become more independent learners. As an Arts in Basic Curriculum School, the Distinguished Arts Program designation provides grant funding to integrate the arts throughout the school. Artists-in-residence provide opportunities to support the arts.

In addition to AVID and Arts Integration, BMS is one of seven schools in the Beaufort County School District that has launched MedTech7, a magnet program focused on opportunities in the medical and technology fields. These innovative programs provide theme-based courses of study that allow students to develop the knowledge and skills necessary to pursue post-secondary education and careers in their chosen fields. In addition, BMS received funding for college and career ready resources from the US Department of Defense Education Activity (DoDEA) grant allocated to expand the BMS STEM program. BMS continues their commitment to excellence by featuring an integrated learning environment that combines student preparedness, rigorous core instruction, and opportunities to extend learning and interests for our diverse student population.

For more information visit: <https://bms.beaufortschools.net/>

Bluffton Middle School

*Available Programs of Choice: **Learning Through Leadership and Project Lead the Way Gateway.***

Bluffton Middle School (BLMS) empowers all students to develop the world class skills and life and career characteristics of the South Carolina Profile of the Graduate by providing a rigorous, 1:1 technology based middle school STEM curriculum where students are able to communicate, collaborate, think critically, and be creative in problem-solving based activities that address real-world issues. When BLMS opened its doors in 2010, a precedent was set of supporting students and families. To compliment and further develop the core academic program, BLMS offers several Project Lead the Way (PLTW) courses that provide students the foundational knowledge for STEM learning needed in high school and to be college and career ready. This curriculum includes: Design and Modeling, Automation and Robotics, Medical Detectives, Introduction to Career Clusters, Flight and Space, and Green Architecture. Due to a heavy focus on STEM learning building wide, BLMS received the prestigious STEM certification through Cognia. This award recognizes the extraordinary opportunities students have to interact with technology to research, collaborate, and think critically to problem solve real world situations incorporating all subjects.

For more information visit: <https://blms.beaufortschools.net/>

H.E. McCracken Middle School

Available Programs of Choice: Arts Integration and PLTW Gateway

H.E. McCracken Middle School's mission is to build on the academic foundation of diverse learners and establish high expectations for contributing, independent, and collaborative members of an ever-increasing technologically driven society. H.E. McCracken Middle School (HEMMS) promotes independence, responsibility, effort, and self-respect. The curriculum promotes STEAM options so students can receive a well-rounded educational experience. HEMMS incorporates Spanish and the integration of the arts and offers courses centered around career exploration in science, technology, engineering, arts, and math.

HEMMS focuses on arts integration for students interested in creative expression using visual arts, dance, chorus, band, guitar, and piano. Working to create opportunities where the arts can be experienced across the curriculum and connecting the core areas is a goal that HEMMS continues to set and expand each year.

HEMMS collaborates with community nonprofit organizations to support students' academic needs. Additionally, HEMMS works closely with the Bluffton Library to encourage students to continue literacy development in their community after hours.

For more information visit: <https://hemms.beaufortschools.net/>

Hilton Head Island Middle School

Available Program of Choice: IB Middle Years Programme and PLTW Gateway

Hilton Head Island Middle School (HHIMS) is empowering all students to develop the world-class skills and life and career characteristics of the Profile of the Graduate by cultivating an environment that develops engaged, intrinsically motivated, globally-aware learners who understand true learning is full of interrelated experiences, applicable both inside and outside of the classroom. HHIMS is focused on developing well-rounded, versatile citizens by implementing a rigorous, world-renowned instructional model that successfully blends a focus on academic achievement and honing higher-order thinking skills with cultural awareness, world language development, technology integration, and community service. HHIMS strongly believes, through a conceptual approach to teaching that provides meaningful educational opportunities for every child, all students can and will learn.

As an International Baccalaureate World School fostering the Middle Years Program, HHIMS strives daily to enhance South Carolina state curriculum standards with real-world applications, incorporating students' unique skills and interests. Teachers tailor instruction to fit the needs of all students, focusing on interdisciplinary teaching and project-based learning, and assessing students for content mastery. Understanding that experiences and exposure are of the utmost developmental importance for students.

For more information visit: <https://hhims.beaufortschools.net/>

Lady's Island Middle School MedTech7 Medical Magnet

*Available Programs of Choice: **MedTech7 Medical, PLTW Gateway, and Arts Integration***

Lady's Island Middle School (LIMS) empowers all students to develop the world class skills, life skills, and career characteristics of the Profile of the South Carolina Graduate by continuing to provide high quality professional development for teachers and staff focusing on improving student achievement, collaboration and teamwork, critical thinking and problem solving through project based learning and a STEAM (Science, Technology, Engineering, Arts and Math) focused curriculum. LIMS is a School of Choice for the Arts and MedTech7, which offers a medical pathway that students can continue into high school.

LIMS is also a recipient benefitting from the U.S. Department of Defense Education Activity (DoDEA) grant. This grant provides additional college and career ready resources to successfully expand the LIMS STEM program.

During the 2021-2022 school year, LIMS continued the curricular instructional focus as a nationally accredited Cognia STEM middle school. LIMS' recent recertification in this area guarantee's an additional 5 year period with this distinction. In addition, through the Arts In Basic Curriculum (ABC) Grant awarded by the South Carolina Arts Commission, LIMS has been recognized as an Arts Infused school. Rigorous and engaging STEAM instruction provides an environment where teachers collaborate and implement processes to develop targeted skills for each student.

For more information visit: <https://lims.beaufortschools.net/>

Whale Branch Middle School MedTech7 Technology Magnet

*Available Programs of Choice: **MedTech7 Technology, Arts Integration, and Project Lead the Way Gateway***

Whale Branch Middle School (WBMS) is empowering all students to develop the world class skills of the profile of the South Carolina Graduate through the choice option of STEAM (Science, Technology, Engineering, Arts, and Math). Through the STEAM program, academic arts teachers collaborate with content area teachers to infuse the arts within academic classes to promote student engagement and enhance teaching and learning. Additionally, WBMS offers Project Lead the Way Launch focused on business and technology. All students participate in visual and performing arts classes to include band, art, and chorus. Furthermore, WBMS students have access to an elaborate garden supported and sponsored by Heritage Community Farm and Clemson Extension. To ensure world class knowledge, WBMS also provides the opportunity at a second language acquisition in Spanish. By tapping into students' interest in the arts and technology students are able to build stronger connections with academic classes.

WBMS students are prepared for life and career paths through a variety of ways. WBMS school counselors partner with several businesses to introduce students to the necessary skills for career paths they might choose. Students at WBMS leave educated on their options as well as the skills and behavior characteristics necessary to attain their career goals.

For more information visit: <https://wbms.beaufortschools.net/>

Middle School

Program Of Choice Options

Arts Integration -*Located at **Beaufort Middle, HE McCracken Middle, Lady's Island Middle, and Whale Branch Middle School***

Arts Integration programs focus on providing extensive opportunities for all students to learn through creative instructional approaches and to express themselves creatively in the arts. The arts curriculum provides students with a creative learning environment that includes performances, exhibitions of artwork and special performing groups.

AVID -*Located at **Beaufort Middle School***

Advancement Via Determination (AVID) is an in-school academic support program for grades 6 through 8. The purpose of the program is to prepare students for college eligibility and success. AVID places academically average students in advanced classes: levels the playing field for minority, rural, low-income, and other students without a college-going tradition in their families; and targets students in the academic middle--B,C and even D students--who have the desire to go to college and the willingness to work hard.

International Baccalaureate Program (IB) - Middle Years Programme (MYP) -*Located at **Hilton Head Middle School***

The IB Middle Years Programme (MYP) emphasizes intellectual challenge. It encourages students aged 11 to 16 to make practical connections between their studies and the real world, preparing them for success in further study and in life. The programme empowers students to inquire into a wide range of issues and ideas of significance locally, nationally, and globally. For more information visit: <https://www.ibo.org/>

Leader in Me -*Located at **Robert Smalls Leadership Academy***

Leader in Me is a whole-school transformation model and process developed in partnership with educators that empowers students with the leadership and life skills they need to thrive in the 21st century. It is based on principles and practices of personal, interpersonal and organizational effectiveness, and upon the powerful premise that every child possesses unique strengths and has the ability to be a leader.

Learning Through Leadership -*Located at **Bluffton Middle School***

Learning through Leadership schools provide a comprehensive learning model through student leadership development. Learning through Leadership program goals include: fostering a student's self-esteem, discipline, responsibility, confidence, and creativity. Students will learn to set and meet goals, effectively cooperate with people of various backgrounds and cultures, and resolve conflicts and solve problems.

MedTech7 Magnet School Programs -*Located at **Beaufort Middle, Lady's Island Middle, and Whale Branch Middle School***

MedTech7 magnet pathways are offered in two clusters: Whale Branch and Beaufort. All MedTech7 schools offer schoolwide Arts Integrated learning. The Beaufort cluster offers Medical pathways in Biomedical Science, Allied Health Science, and Sports Medicine. The Whale Branch cluster offers Technology pathways in Game & Interactive Media Design, Cybersecurity, and Networking pathways. For more information visit:

<https://www.medtech7.com>

Montessori - *Located at **River Ridge Academy***

Montessori education supports children's natural development and encourages them to develop their creativity, think critically, solve problems, and manage their own time.

Montessori features mixed-age classrooms, allows students to make individual choices about their research and work, and gives them time for uninterrupted concentration. Montessori students enjoy their learning, so they can better remember what they learn.

Project Lead the Way Gateway -*Located at **Beaufort, Bluffton, HE McCracken, Hilton Head, Lady's Island, River Ridge, Robert Smalls Leadership Academy, and Whale Branch Middle Schools.***

Through explorations of coding and robotics, flight and space, human body systems, and more, PLTW Gateway fuels students' passion for discovery. As they engage in hands-on, collaborative problem solving focused on real-world challenges, students use and stretch their imaginations in brand-new ways and connect their learning to life. All the while, students step into roles spanning the career landscape – a crucial experience during this transitional time in their lives.

High Schools

Program Of Choice Options Information Sessions:

Battery Creek High School - March 5, 2024 at 5:00pm-7:00pm

Beaufort High School - March 5, 2024 at 6:00pm-7:30pm

Hilton Head Island High School - March 7, 2024 at 5:00pm-7:00pm

Whale Branch Early College High School - February 21, 2024 at 9:00am-1:00pm

Virtual Learning:

All BCSD students grades 5-12 have the option to take courses virtually while maintaining the benefits of school enrollment. See pages 37-38 of this booklet for more information about Virtual Learning Options.

High School Programs Of Choice

		Battery Creek	Beaufort MedTech7 Magnet	Bluffton	Hilton Head	May River	Whale Branch MedTech7 Magnet
Programs of Choice							
Advanced Placement Capstone (AP)			✓	✓		✓	
Cambridge AICE		✓				✓	
Mandarin Chinese as a Language		✓					
Early College							✓
International Baccalaureate (IB)					✓		
Leader in Me		✓					
MedTech7			✓				✓
Visual & Performing Arts			✓	✓		✓	
Career and Technical Education (CTE) Pathways							
Agriculture	Environmental & Natural Resources	✓					
Arts & Audio/Visual	Media Technology			✓			
Business Administration	Business Information Management	✓	✓				✓
	Business General Management	✓	✓	✓	✓	✓	✓
	Accounting	✓				✓	
	Business Finance/Law	✓		✓	✓		
Health Sciences	Biomedical Sciences		✓	✓			
	Health Sciences	✓	✓	✓		✓	✓
	Sports Medicine	✓	✓	✓		✓	✓
Hospitality & Tourism	Culinary Arts	✓			✓		
	Hospitality Management				✓	✓	
	Foods & Nutrition		✓	✓			
Education & Training	Child Development			✓			
	Introduction to Teaching			✓			
Information Technology	Information Technology Systems						✓
	Computer Science	✓	✓	✓	✓	✓	✓
	Game and Interactive Media Design		✓				
	Web & Digital Communications	✓		✓	✓	✓	
Public Safety	Law Enforcement Services					✓	
	Fire Fighter Services			✓			
Manufacturing	Welding	✓				✓	
Marketing	Marketing Communications		✓		✓		
	Marketing Management			✓		✓	
STEM	Aerospace/Aviation	✓					
	Engineering	✓	✓	✓		✓	✓
Transportation	Automotive Technology					✓	



Available for students outside the attendance zone to apply for Program of Choice



Only available to students within that school's attendance zone

High Schools

Battery Creek High School

*Available Programs of Choice: **Cambridge AICE Diploma, Learning Through Leadership - Leader in Me, and Mandarin Chinese as a language.***

Battery Creek High School (BCHS) promotes student involvement via the implementation of rigorous and relevant curriculum in a friendly environment that appreciates and celebrates learning and students needs. The schools array of academic programs offered to students motivates them to delve into their areas of interest and toward college career goals. The Cambridge AICE Diploma track provides students the chance to actively conduct research and cultivate innovative problem solving abilities in readiness of college credit assessments. BCHS incorporates dual enrollment, Career and Technical Education (CTE) pathways, and the Teacher Cadet program to provide students with the opportunity to select courses that best meet their individual needs. The BCHS frameworks guarantee that each student is adequately prepared to graduate with the essential skills and certifications required for both academic and professional achievement.

Battery Creek High School is the only high school in the county that offers a formal leadership education model and has the notable achievement of being the third highest school in the to earn the Leader and Me Lighthouse accreditation. The Leader in Me framework allows students to showcase their leadership abilities in several domains of life. Additionally, students can choose from a wide variety of visual and performing arts groups, clubs, service organizations, and sports teams to thrive in an environment that prioritize student needs and interests. The BCHS renovation project has been successfully completed, providing educational and community spaces for students to grow and prosper. **For more information:**

<https://bchs.beaufortschools.net/>; visit BCHS on March 5, 2024 at 5:00pm-7:00pm

Beaufort High School MedTech7 Medical Magnet

*Available Programs of Choice: **MedTech7 Medical, Visual & Performing Arts, and AP Capstone***

Beaufort High School (BHS) continues to focus on supporting all students in developing the world class skills and life and career characteristics of the Profile of the South Carolina Graduate. BHS is proud to consistently graduate National Merit and Presidential Scholars.

Every student is provided with a computer to increase student engagement and learning through technology. MedTech7 pathways enhance student opportunities by integrating schoolwide arts throughout the school and offering state of the art medical pathways with industry credential opportunities. The arts at BHS consistently produce high quality performances and learning for students. BHS offers instrumental and choral music, dance, theater, visual art, and digital design classes. In addition to high quality academic programs, BHS has excellent sports programs winning multiple region and state titles every year - including the AAA football state championship in 2022 as well as titles in tennis, golf, track and field, basketball, baseball, wrestling, and more.

The ultimate goal to prepare BHS students by offering multiple language development, science, technology, engineering, math (STEM), the arts, and social sciences along with the interpersonal skills, self-direction, and integrity to successfully enter the job workforce and/or meet the criteria to enroll in the educational field of student choice.

For more information visit: **<https://bhs.beaufortschools.net/>**; visit BHS on March 5, 2024 at 6pm-7:30pm

Bluffton High School

Available Programs of Choice - available only to students zoned for BLHS: AP Capstone and Visual & Performing Arts

Bluffton High School (BLHS), has consistently achieved Excellent ratings on the last three South Carolina School Report Cards. BLHS offers a rigorous but flexible academic program designed to meet the diverse needs of every student. BLHS takes pride in leading College and/or Career Readiness among Beaufort County high schools and maintaining the highest graduation rate in the history of the Beaufort County School District for two consecutive years. Through a well-rounded curriculum, extensive co-curricular programs, and a supportive learning environment, students are encouraged to achieve their personal best. BLHS offers 46 Advanced Placement classes, 13 Career and Technical Education pathways including business, technology, and health sciences, as well as Dual Enrollment opportunities through two local colleges. By offering a wide range of unique courses and academic opportunities, students have the freedom to customize their educational experience. In addition to excelled academic opportunities, BLHS has earned multiple region and state accolades across our 40 athletic teams. The school culture celebrates individuality, diversity, and respect for others. Students at BLHS are encouraged to discover their potential and become the best versions of themselves.

For more information visit: <https://blhs.beaufortschools.net/>

Hilton Head Island High School

Available Program of Choice - available only to students zoned for HHIHS or for rising BCSD 9th graders through lottery: International Baccalaureate

Hilton Head Island High School (HHIHS) provides all students the opportunities to develop the world class skills and life and career characteristics of the Profile of the South Carolina Graduate. HHIHS is an IB World School. The International Baccalaureate (IB) Program spans all grade levels by offering two components: the Middle Years Programme (MYP) for ninth and tenth graders, and the Diploma Programme (IBDP) for eleventh and twelfth graders. These programs offered at HHIHS encourage students to use critical thinking and problem-solving skills to work both individually and in a collaborative setting to creatively come up with innovative ideas and solutions. Our featured STEM program is the Computer Science/Cybersecurity Pathway through Project Lead the Way (PLTW). Also offered in our Career and Technology fields is the Culinary Arts and Travel and Tourism/Event Management pathways. HHIHS also offers Advanced Placement (AP) opportunities as well as Dual Enrollment through the BCSD partnership with USCB and the Technical College of the Lowcountry. In addition, HHIHS has earned many region and state athletic accolades including tennis, golf, volleyball, cross country, and swim. HHIHS now features a competitive E-Sports team. The HHIHS community is proud to continue a comprehensive tradition of excellence. Together HHIHS continues to make the “Seahawk Nest” an exceptional place to be. For more information visit: <https://hhihs.beaufortschools.net>

May River High School

Available Programs of Choice: AP Capstone, Cambridge AICE, and Visual and Performing Arts

May River High School (MRHS) provides students with access to rigorous curricula through a wide selection of academic offerings. Through a supportive and engaging learning environment, students are encouraged to discover and develop their talents and interests. Students can earn the AP Capstone and Cambridge Academy diplomas or take courses in one of twelve Career & Technical Education (CTE) pathways offered including business, technology, PLTW engineering, welding, automotive services and more. In addition, MRHS offers Dual Credit Enrollment opportunities through two local colleges. MRHS offers a well-rounded education grounded in academics and enriching extracurricular activities. MRHS has earned region and state titles in tennis, golf, and football. Through their offerings, students have the opportunity to create and follow a unique path preparing them to achieve their individual goals.

For more information visit: <https://mrhs.beaufortschools.net/>

Whale Branch Early College High School MedTech7 Technology Magnet

*Available Programs of Choice: **MedTech7 Technology and Early College***

The mission of Whale Branch Early College High School is to develop our community of learners into responsible college & career-ready citizens through diverse curricula and work-based learning experiences that foster creativity, collaboration, critical thinking, and communication. In order to make this mission a reality, WBECHS collaborates with stakeholders so that students obtain world class skills, meet the requirements of the Profile of a South Carolina High School Graduate, and are career and college ready. WBECHS does this by providing high-quality professional development for teachers and staff, focusing on improving student achievement, fostering collaboration and teamwork, and employing critical and problem-solving skills through project-based learning and a STEAM (Science, Technology, Engineering, Arts and Math) focused curriculum. The staff, students, and parents of the WBECHS community will continue to promote excellence, collaboration, STEAM, and school-wide growth. Through planning, implementation, and reflection, WBECHS strives for accuracy everyday to ensure students are prepared for an ever-changing world. WBECHS is proud to be a Blue Ribbon School Beacon Award recipient. WBECHS has earned multiple athletic region and state accolades in basketball, football, and track and field. Warrior Nation is on the War Path for Excellence!

For more information visit: <https://wbechs.beaufortschools.net/>

High School

Program Of Choice Options

Advanced Placement Capstone (AP) -*Located at **Beaufort, Bluffton, and May River High Schools***

AP Capstone™ is a diploma program based on two year-long AP courses: AP Seminar and AP Research. These courses are designed to complement other AP courses that the AP Capstone student may take. For more information visit: <https://apcentral.collegeboard.org>

Cambridge AICE -*Located at **Battery Creek and May River High Schools***

The Cambridge Advanced International Certificate of Education (AICE) Diploma is an international curriculum and examination system that emphasizes the value of broad and balanced study. The Cambridge Academy provides students with the opportunity to pursue a rigorous program of study based on an internationally standardized curriculum.

For more information visit: <https://www.cambridgeinternational.org>

Mandarin Chinese as a language -*Located at **Battery Creek High School***

Mandarin Chinese as a language is a form of education in which students are taught literacy and content in Mandarin Chinese during the school day. Students have the advantage of learning required subject area content and becoming fluent in a second language at the same time.

High School Program Of Choice Options

Early College -*Located at **Whale Branch Early College High School***

Early College high school students can earn both a high school diploma and up to two years of college credit at the same time. Early College high schools increase exposure and access to post-secondary study while reducing or eliminating college costs as students prepare for the job market or further study. A strong component of the Early College model is the WBECHS - Technical College of the Lowcountry (TCL) partnership.

International Baccalaureate Program (IB) -*Located at **Hilton Head Island High School***

IB is a program offered at the Hilton Head Cluster. The Middle Years Programme (MYP) is a curriculum framework for grades 6 – 10. It emphasizes conceptual learning through inquiry in all subjects. It connects the content areas and creates a bridge between school knowledge and real world knowledge. MYP ends with the MYP Personal Project, a passion project for 10th graders. The Diploma Programme is a course of study for grades 11 and 12 with courses from 6 subject areas and IB core content. It allows students the opportunity to earn an international diploma as well as college credit. IB is considered one of the highest rigor programs available to students in terms of preparation for college. For more information visit: <https://www.ibo.org/>

Leader in Me -*Located at **Battery Creek High School***

Leader in Me® is a whole-school transformation model and process developed in partnership with educators that empowers students with the leadership and life skills they need to thrive in the 21st century. It is based on principles and practices of personal, interpersonal and organizational effectiveness, and upon the powerful premise that every child possesses unique strengths and has the ability to be a leader. For more information visit: <https://www.leaderinme.org/>

MedTech7 Medical and Technology Magnet School Programs -*Located at **Beaufort High School** and **Whale Branch Early College High School***

MedTech7 magnet pathways are offered in two clusters: Whale Branch and Beaufort. All MedTech7 schools offer schoolwide Arts Integrated learning. The Beaufort cluster offers Medical pathways in Biomedical Science, Allied Health Science, and Sports Medicine. The Whale Branch cluster offers Technology pathways in Game & Interactive Media Design, Cybersecurity, and Networking pathways. MedTech7 provides theme-based pathways of study which allows students to develop the knowledge and skills necessary to pursue careers and/or post-secondary education. For more information visit: <https://www.medtech7.com>

Visual and Performing Arts -*Located at **Beaufort, May River, Bluffton, and Whale Branch Early College High School***

Visual and Performing Arts programs provide opportunities for committed and talented students who have a serious interest in the arts. In-depth study of the arts develops conceptual and technical skills of artistic expression and brings to fruition the student's individual interpretations of the world. The arts training is provided by highly trained art teachers as well as artists in residence. Students participate in extensive, highly specialized courses that can include dance, music theater, visual arts, and communication arts as well as a full academic program.

Career and Technical Education (CTE)

Career and Technical Education (CTE) offers an authentic problem-based approach in multiple pathways designed to accelerate students for success in our ever-changing global society and career marketplace.

CTE serves students in grades 6-12 through state-approved course offerings leading to career concentrations, work-based learning opportunities, and/or industry credentials. Students can earn the AP Capstone and Cambridge Academy diplomas or take courses in one of twelve Career & Technical Education (CTE) pathways offered including business, technology, PLTW engineering, welding, automotive services and more.



Preparing CTE students for college and career also includes more than average classroom instruction. At Beaufort County School District, our goal is for CTE students to graduate with a diploma PLUS experiences to help make a more effective transition after high school graduation. Experiences include...

- leadership opportunities in Career Technical Student Organizations through competitive events and regional and state offices;
- skill development through Industry Certifications;
- Career Readiness Proficiency;
- business experience through Work-Based Learning/Internships/Capstone Classes; and
- early college credits through Dual Credit/ Dual Enrollment.

These experiences increase the soft skill development employers are seeking and provide students with a jump start to the future.

Visit the BCSD CTE website for more information:

<https://www.beaufortschools.net/academics/instructional-programs-support/career-technical-education-cte>

Dual Enrollment Programmatic Options



TECHNICAL COLLEGE
OF THE LOWCOUNTRY

Dual Enrollment courses are college courses taken during high school for which a student receives both high school and college credit. Students must meet all college enrollment requirements and take only courses approved by the school district.

The purpose of dual enrollment courses is to allow high school students who are interested in college level work to earn simultaneously both high school credit toward graduation from high school and academic course credit toward either an associate, baccalaureate degree, or certificate in an institution of higher education.

Students who receive college credit while still in high school have a higher likelihood of graduating from high school, are more likely to continue their education after high school and have more success during their first official year of college.

Dual enrollment programs can significantly reduce the time and cost required to pursue post-secondary education, because students enroll early in courses that will be directly applied to their college transcripts.

Students may enroll in TCL's college courses and earn units of credit toward their high school diplomas through cooperative Dual Enrollment agreements with the Technical College of the Lowcountry (TCL). These agreements provide that three-semester hour college courses transfer as one unit of credit. Successful completion of prerequisite courses will be required for specified certified programs.

There are two dual enrollment options (College Transfer) and (Technical Careers Certificates) for BCSD students. Based on eligibility, the Beaufort County School District can pay for tuition & books for approved courses. Additional scholarships may also be available for designated TCL technical related courses.

The Beaufort County School District and the Technical College of the Lowcountry also offer dual enrollment opportunities for high school students who desire training in one of the specialized technical career programs. Career & Technical Education (CTE) Careers Certificates can provide students with the opportunity to enter the workforce in fewer than two years. This alignment between high school and the technical college career pathways also allows students opportunities to earn stackable credentials such as certificates, diplomas, and associate degrees.

COLLEGE/UNIVERSITY TRANSFER AND CAREER & TECHNICAL CERTIFICATES

Eligible Beaufort County School District students may also take advantage of dual enrollment at USCB to include offerings at their multiple campuses in Beaufort, Bluffton, and on Hilton Head Island.

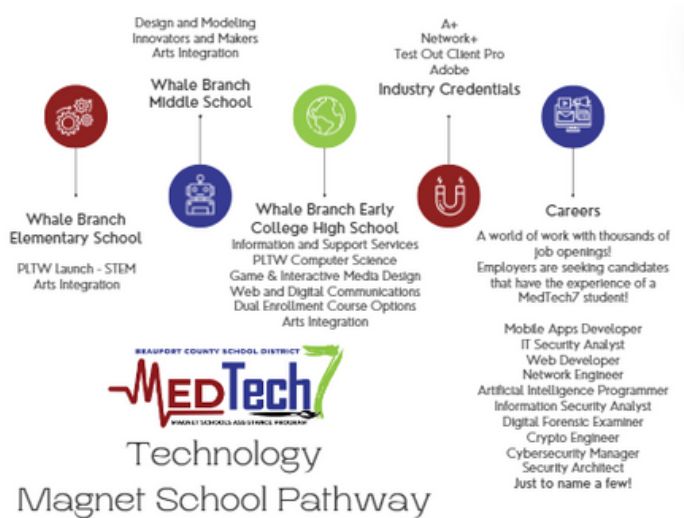
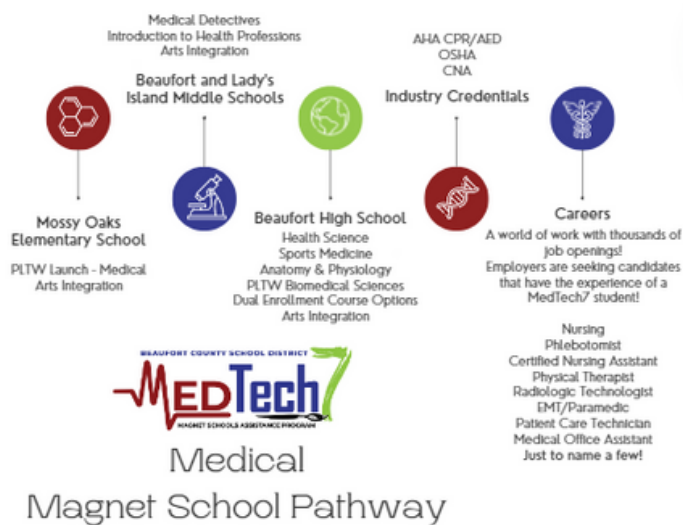
Students can jump start their college experiences by enrolling in the general education courses such as English, Mathematics, and History, but can also take advantage of USCB's excellent programs of study to include Computational Science, Business and/or Hospitality Management, Education, Sociology and much more.



UNIVERSITY OF SOUTH CAROLINA
BEAUFORT

MedTech7

Magnet School Assistance Program



Beaufort County School District (BCSD) is bringing innovative curriculum and resources to students, and professional development for instructors in seven district schools through the MedTech7 grant. MedTech7 is funded through the federal Magnet School Assistance Program (MSAP) to provide schoolwide arts integration, and medical and cybersecurity technology magnet pathways to the Whale Branch and Beaufort clusters. In addition, MedTech7 offers medical, technology, and arts-themed summer camps to students free of charge.

MedTech7 aims to prepare BCSD students to step into careers or post-secondary education in the medical and cybersecurity technology fields directly after high school graduation. The courses provided as part of the MedTech7 magnet pathways give students the knowledge and skills that employers are seeking. Both the medical and cybersecurity technology fields require highly-skilled and highly-qualified candidates to fill positions in Beaufort County.

In addition to medical and technology magnet pathways, MedTech7 schools are also implementing arts integration schoolwide. MedTech7 and BCSD has partnered with The Institute for Arts Integration and STEAM (IAS) and ArtsNow to provide standards-aligned lessons, and high-quality instructional strategies and materials to deliver an innovative curriculum.

Virtual Learning Options

Beaufort County School District has collaborated with partner districts in South Carolina to offer high-quality, full time, virtual programs for grades 5-12. Students stay enrolled in their zoned school, but take their courses online. There are eligibility requirements for virtual learning, including a minimum Grade Point Average of 2.5 and attendance in good standing.

The Virtual Learning application will be available between March 1-31, 2024. Interested families should contact the students school counselor to review eligibility and request the application.

Grades 5-8 Low Country Virtual

Low Country Virtual is a tuition-free, full-time, online public school program based upon the National Standards for Quality (NSQ). Beaufort County School District has partnered with several other districts across the state as part of the Lowcountry Education Consortium whose purpose is to provide full-time, standards-based virtual education to students.

Low Country Virtual offers a strong South Carolina standards-aligned curriculum and a flexible, online learning environment. Students will be able to take core courses in English language arts, math, science, and social studies as well as electives via a high-quality curriculum taught by certified teachers. Students remain enrolled in their zoned school in Beaufort County School District and are eligible for participation in extracurricular events and activities.

Students will be required to log in daily for synchronous (real-time, live) instruction. Sample schedules by grade level are available. Students will be provided a device by the school district, but will need a stable internet connection.

Parents considering Low Country Virtual should read over the Guidelines for Success and then contact the school counselor at the student's school to discuss if the student would be a good candidate for virtual learning. The Frequently Asked Questions section also provides information for parents considering Low Country Virtual.

For more information visit: <https://lowcountryvirtual.org/>

Virtual Learning Options

Athletics, Arts, and Extra-Curriculars

Students who qualify for a Virtual Learning Option remain enrolled at their zoned BCSD school. Enrollment in a BCSD school allows students to participate in athletics, the arts, and other extra-curricular clubs while taking courses virtually. Virtual Learning provides a flexible schedule helping make demanding travel, practice, and rehearsal schedules more manageable while maintaining academic success.

Virtual Student Spotlight: Andrew Lawson, 8th Grade

Low Country Virtual student, enrolled at H.E. McCracken Middle School

“The virtual learning model has been such a unique way to help Andrew learn to balance school, sports, and serving at our church and the community. He is doing well in his classes and just competed at the state level in wrestling and came in 2nd place! We have been grateful to have this option for Andrew and highly recommend it for those families who desire flexibility without compromising on rigor!”

Erica Lawson, LCV Parent



Pictured left to right at State Championship:
Coach Jarrett, Andrew Lawson, Coach Gearhart

Grades 9-12 High School Virtual Learning Program

In conjunction with [VirtualSC](#) and district partnerships, BCSD is able to offer a full-time virtual high school option. Students take core courses in English, math, science, and social studies as well as electives using approved South Carolina curriculum aligned with state standards. All virtual high school courses are taught by highly qualified and certified South Carolina teachers.

Students remain enrolled in their zoned school in Beaufort County School District and are eligible for participation in extracurricular events and activities. Students will be provided a device by the school district, but will need a stable internet connection.

Students need to be self-motivated and complete much of their coursework in an asynchronous (independent of teacher) format. Students will also participate in synchronous (real-time, live) learning for each course. Virtual teachers will provide schedules for weekly office hours and live sessions of instruction. Parents should read over these [Guidelines for Success](#) and contact the school counselor at the student's zoned school to discuss if the student would be a good candidate for virtual learning, and request the application.

Beaufort-Jasper Academy for Career Excellence

Beaufort-Jasper Academy of Career Excellence (ACE) is a career-center open to 11th and 12th grade students from Beaufort and Jasper County high schools. ACE offers 13 Career and Technical Education (CTE) programs, which prepare our learners to attend college or enter the work force. ACE provides a student-centered learning environment that focuses on the needs of each individual student.

ACE has a unique structure where students take three blocks of their CTE program and one block of ELA each day. Students who successfully complete their CTE program will have earned one or more industry recognized certifications or state licenses. In addition to the credentials, ACE offers dual-enrollment opportunities through the Technical College of the Lowcountry (TCL) in both Culinary Arts (9-credits) and English (3-credits) for those who qualify.

Students are encouraged to pursue their passions and are able to select a CTE pathway that best fits their individual interests. ACE offers students off-site learning experiences, work-based learning opportunities with local business partners, and job placement. Please do not hesitate to contact ACE for a tour or additional information.

ACE Program Offerings

Auto Collision Repair	Automotive Technology	Barbering / Master Hair Care
Building Construction	Cosmetology	Culinary Arts
Electricity	Emergency Medical Services	Law Enforcement
Nursing / Health Science	Marine Science	Nail Technology
	Welding	

To learn more about all that ACE has to offer visit:

www.bjace.org



Beaufort County School District Visual and



Performing Arts Program



Through a consistently growing Visual and Performing Arts Program, Beaufort County School District (BCSD) is committed to providing our students with an exceptional arts education. Seven of our schools are designated as Arts in Basic Curriculum Schools, three are designated as Visual and Performing Arts schools, and many work to integrate the arts in core content subjects. The Arts are an integral part of our schools and an important component to the programs we provide our students.

Visual Arts

Visual arts exhibitions are provided throughout the year to allow Beaufort County students the opportunity to showcase their art works, including the High School Regional Art Exhibit, and two River of Words Art Exhibits. BCSD students consistently win visual arts awards through a myriad of art competitions such as the SC State Fair, Scholastic Art Awards, Drexel Photography Contest, and the SC Congressional Art Competition. In 2022-2023 students won 85 visual art awards, and in 2023-2024 they have already won over 100 awards including Scholastic Gold and Silver Keys and the only Gold Key Portfolio winner in our region. Beaufort County also works with various community partners to publish The River of Words, an annual publication of student art and poetry. Our student's artwork is displayed throughout the community and across the country, truly showcasing the talent of our student artists.

Performing Arts

The performing arts of BCSD provide over 100 performances each year. Students from across the district also perform at our annual African American History Conference and at our monthly Board of Education meetings. Beaufort County students have the opportunity to rehearse with and perform with the Hilton Head Symphony through "Symphony Moves." Beaufort County also provides unique opportunities for Band, Orchestra, Theatre, Dance and Chorus through a district wide honors program. Performing art students learn select pieces from master artists and provide a district wide performance for our community. Student performers from our high schools attend state concert performance assessments, often earning superior ratings. BCSD students also enjoy performances from world renowned performers, through a partnership with Fripp Island Friends of Music, our Kennedy Center Partners in Education program, and the many guest artists who visit our schools each year.

Beaufort County also provides a summer program that provides a unique opportunity to grow the gifts and talents of our students. The Sea Island School for the Arts (SISA) is held in June and provides over 150 students an opportunity to grow their skills and talents in various art forms. The summer program provides two sites for students in grades 3-8 and one for students 9-11. Through SISA our students are able to work with our talented arts educators and visiting artists on creations and performances that are showcased to our community in three SISA extravaganzas.

BCSD Athletic Achievements

In addition to high quality academic programs, Beaufort County School District offers comprehensive athletic programs to students in grades 9-12. BCSD schools are consistently receiving region and statewide recognition for athletics, and every year many students at each high school sign on to attend college with athletic scholarships. Below are some of the athletic accomplishments over the last three years.

	2021-2022	Fall and Winter 2022	Fall and Winter 2022-2023
Battery Creek High School	Wrestling Region Champions		Boys Track & Field Region Champions
Beaufort High School	Football State Runner Up, Lower State Champions Boys Basketball, Boys Golf, and Boys Tennis Region Champions	Football State Champions Boys Basketball Region Champions	Boys Basketball Region Champions Boys Soccer Regions Champions, Lower State Champions, State Runner up Boys Tennis Regions Championship Boys Golf Lower State Runner Up
Bluffton High School	Girls Basketball Region Champions Boys Cross Country Region Champions	Girls Basketball Region Champions	Girls Basketball Region Champions Girls Wrestling State Champions
Hilton Head Island High School	Girls Golf State Runner Up	Girls Tennis State Champions	
May River High School	Girls Golf State Champions Wrestling Region Champions	Wrestling Region Champions	Girls Golf State Champions
Whale Branch Early College High School	Girls Track and Field State Champions		Girls Track and Field State Champions

Frequently Asked Questions

Why is program of choice a good idea?

Program of choice creates a more personalized learning experience. Research shows that children learn in a variety of ways, and parents know that children have different talents and interests. Program of choice allows parents to select the type of instruction, and the type of school focus, that appeals to each child. By getting students excited about school, they become more engaged. As their knowledge and skills increase, so does their confidence.

Can my child attend a school outside of our neighborhood school's attendance zone?

It doesn't matter where you live as long as you reside in Beaufort County. If your application is approved, your child can attend a program of choice outside your regular attendance zone. **Please note: Parents must provide transportation to and from the choice school if the student does not live in the attendance zone.**

What choices are available?

The Board of Education has approved a variety of instructional options and many of those options are available at multiple schools. All choices are listed in this booklet. More information is available on the Program of choice Headquarters page on the district's website: <https://www.beaufortschools.net/families/school-choiceprograms>

How do I apply?

Complete an online application on the Program of choice Headquarters page of the district website: <https://www.beaufortschools.net/families/school-choiceprograms>

Online applications will be posted on the Beaufort County School District's website beginning **March 1, 2024**. Completed online applications must be submitted by 5pm on **March 31, 2024**.

Can I submit my application after the March 31, 2024 deadline?

If you can document that you moved to Beaufort County – or to a different location within Beaufort County – after the deadline but before **August 18, 2024**, you may submit an application. Information on post-deadline application procedures will be made available

April 30, 2024 on the program of choice Headquarters website:

<https://www.beaufortschools.net/families/school-choiceprograms>

Do I have to submit a new application each year?

Once approved, you no longer need to re-apply each year for that school and program so long as you continue to reside in Beaufort County. The student may remain enrolled until completing the grades offered at that school. Please note that you must apply for program of choice at the end of each school grade band. If your child completes elementary school, you must apply for middle program of choice; the same for middle to high school.

Can my children stay at a choice school if they are no longer enrolled in that school's choice program?

No. If your children leave a choice program at a school outside your regular attendance zone, they must enroll at the school that serves their neighborhood.

Frequently Asked Questions

Can my child transfer to a school to participate on an athletic team or in an extracurricular activity?

Transfers are not allowed for students to participate in extracurricular programs or sports. Also, approved transfers do not guarantee athletic eligibility while attending out-of-zone schools (see the [Beaufort County Schools Athletic Handbook](#) on the District website).

If my child is approved for a choice program, are siblings considered “pre-approved” for that program?

While consideration will be given to siblings, approval of one child’s program of choice application does not guarantee that siblings will be approved for that choice due to possible building capacity issues. Separate applications must be submitted for each child.

Can my request be denied?

Yes. Records of excessive absences, tardiness, discipline matters, or academic concerns may be grounds for not approving or renewing a request, or immediately terminating a transfer at the Principal’s discretion. In addition, if the number of choice applications at a school would cause the school to exceed its overall enrollment capacity, or if approved applications would push an individual choice program beyond its capacity, a lottery would be held to determine which applications are approved. **There are two schools within the district with no availability HE McCracken Middle School and Pritchardville Elementary School.** However, parents may still apply at those schools, and if limited space becomes available, a lottery would be held later this spring.

Will seats in choice programs be approved on a first-come, first-served basis?

No. Program of choice applications will be reviewed after the **March 31, 2024** deadline. If the number of applicants for a particular program is greater than the number of available seats, a lottery will be used to determine which students are enrolled.

If my child’s application to attend a choice program at an out-of-zone school is approved, will school bus transportation be provided?

No. Bus transportation is provided only to schools in your regular attendance zone.

Can I appeal a denial of my program of choice application?

Yes. An appeal must be made in writing and postmarked within **10 days** after the district mails a notification that an application has been denied. Please mail it to: Attn: Yanina SarliRotti, P.O. Drawer 309, Beaufort, SC 29901. Within that same time frame, an appeal also may be hand-delivered to the Beaufort County School District, Office of Student Services, at 2900 Mink Point Blvd., Beaufort, SC 29902. Or email Yanina SarliRotti at Yanina.SarliRotti@beaufort.k12.sc.us.

Can I apply if I live outside the Beaufort County School District?

No. Only documented Beaufort County residents may participate in the District’s program of choice.

Frequently Asked Questions

What if I no longer wish for my child to attend a program of choice?

Students may return to the school in their attendance zone at any time during a school year. Students who were originally attending a choice program outside of their school zone and withdraw will not be eligible to re-enter the program for that school year.

Will I have to pay any extra fees to attend a choice program outside our neighborhood school's attendance zone?

No. Beaufort County students who attend choice programs will not pay extra tuition, although families will be responsible for their students' transportation if they live outside the attendance zone for the program of choice they will be attending.

Will schools offer traditional classroom instruction in addition to their choice programs?

All district schools maintain a Science, Technology, Engineering and Mathematics (STEM) focus, as well as a core curriculum includes the arts, world languages, and technology.

Beaufort County's School Districts program of choice options come in two forms:

- **School-within-a-school:** A traditional curriculum is offered for students who live in that attendance zone. That traditional curriculum includes a Science, Technology, Engineering and Mathematics (STEM) focus as well as a core in the arts, world languages, and technology. In addition to that traditional curriculum, the school also offers a specific "choice option" available to students who live both inside and outside the regular attendance zone. Example: Beaufort Elementary School offers a traditional elementary grades curriculum, but also offers two "choice options" in Montessori and AMES.
- **School-wide:** All enrolled students participate in a focused instructional method. Example: Lady's Island Elementary engages all its students with a school-wide arts-infused approach.

Do I have to submit a choice application if the instructional option I want for my child is already available at the school that serves our current neighborhood's attendance zone?

No. You should discuss your interest with the specific school counselor at the school in your attendance zone. The only exceptions are cases where the program of choice option requires an additional, program-specific application. Those exceptions include the Montessori programs at Beaufort Elementary and River Ridge Academy, or the AMES (Advanced Math, Engineering, and Science) programs at Beaufort and Pritchardville Elementary Schools.

Are program of choice options available to Pre-K children?

No. If children are determined to be eligible for pre-kindergarten, they must attend the schools in their attendance zones.

What are the grounds for removal from a program of choice program?

Students can be removed from a choice programs due to academic, attendance, or discipline concerns. Parents will be notified in writing if their child is in violation of any of the three areas.



2024-2025 Academic School Calendar - 90/90 Split

All Beaufort County Schools



JULY 2024						
Su	M	T	W	Th	F	Sa
	1	2	3	4	5	6
7	8	9	10	11	12	13
14	15	16	17	18	19	20
21	22	23	24	25	26	27
28	29	30	31			

AUGUST 2024						
Su	M	T	W	Th	F	Sa
				1	2	3
4	5	6	7	8	9	10
11	12	13	14	15	16	17
18	19	20	21	22	23	24
25	26	27	28	29	30	31

SEPTEMBER 2024						
Su	M	T	W	Th	F	Sa
1	2	3	4	5	6	7
8	9	10	11	12	13	14
15	16	17	18	19	20	21
22	23	24	25	26	27	28
29	30					

OCTOBER 2024						
Su	M	T	W	Th	F	Sa
		1	2	3	4	5
6	7	8	9	10	11	12
13	14	15	16	17	18	19
20	21	22	23	24	25	26
27	28	29	30	31		

NOVEMBER 2024						
Su	M	T	W	Th	F	Sa
					1	2
3	4	5	6	7	8	9
10	11	12	13	14	15	16
17	18	19	20	21	22	23
24	25	26	27	28	29	30

DECEMBER 2024						
Su	M	T	W	Th	F	Sa
1	2	3	4	5	6	7
8	9	10	11	12	13	14
15	16	17	18	19	20	21
22	23	24	25	26	27	28
29	30	31				

JANUARY 2025						
Su	M	T	W	Th	F	Sa
			1	2	3	4
5	6	7	8	9	10	11
12	13	14	15	16	17	18
19	20	21	22	23	24	25
26	27	28	29	30	31	

FEBRUARY 2025						
Su	M	T	W	Th	F	Sa
						1
2	3	4	5	6	7	8
9	10	11	12	13	14	15
16	17	18	19	20	21	22
23	24	25	26	27	28	

MARCH 2025						
Su	M	T	W	Th	F	Sa
						1
2	3	4	5	6	7	8
9	10	11	12	13	14	15
16	17	18	19	20	21	22
23	24	25	26	27	28	29
30	31					

APRIL 2025						
Su	M	T	W	Th	F	Sa
		1	2	3	4	5
6	7	8	9	10	11	12
13	14	15	16	17	18	19
20	21	22	23	24	25	26
27	28	29	30			

MAY 2025						
Su	M	T	W	Th	F	Sa
				1	2	3
4	5	6	7	8	9	10
11	12	13	14	15	16	17
18	19	20	21	22	23	24
25	26	27	28	29	30	31

JUNE 2025						
Su	M	T	W	Th	F	Sa
1	2	3	4	5	6	7
8	9	10	11	12	13	14
15	16	17	18	19	20	21
22	23	24	25	26	27	28
29	30					

Modified Year-Round Calendar

Semesters/Quarters

1st semester August 7-December 20

1st quarter August 7 - October 9

2nd semester January 8 - May 29

2nd quarter October 14-December 20

3rd quarter January 8 - March 19

4th quarter March 20 - May 29

Progress Reports

Quarter 1 September 6

Quarter 2 November 15

Quarter 3 February 13

Quarter 4 April 25

Report Card Distribution

Quarter 1 October 18

Quarter 2 January 10

Quarter 3 March 28

Quarter 4 June 6

Accountability Days

October 9 - 45th day

March 19 - 135th day

Holidays/Vacation

July 4 Independence Day

September 2 Labor Day

October 10-11 No School

November 5 Election Day

November 11 Veterans Day

November 27-29 Thanksgiving Break

December 23-January 6 Winter Break

January 20 Martin Luther King Jr. Day

February 17 Presidents' Day

February 18-19 No School

April 14-18 Spring Break

May 26 Memorial Day

June 19 Juneteenth

Weather make-up days

*If Needed or No School

December 23

January 6

March 17

Early Dismissal for Students

October 9

February 13

March 14

Professional Development

*No School for Students

July 31 - August 6

January 7

February 14

May 30

June 2 - 3

	Full day for students
	No school for students
	First day back for students
	Early dismissal for students
	Weather make-up day
	In-service day for staff

Graduation for High Schools

May 30, 10am - Beaufort High

May 30, 7pm - Bluffton High

June 2, 10am - Battery Creek

June 2, 7pm - Hilton Head Island High

June 3, 10am - Whale Branch Early College

June 3, 7pm - May River High

May 31 or June 4, 7pm - Make up

*Summer Graduation - August at BCHS

Board Approved 2/6/24



2025-2026 Academic School Calendar - 90/90 Split

All Beaufort County Schools



JULY 2025						
Su	M	T	W	Th	F	Sa
		1	2	3	4	5
6	7	8	9	10	11	12
13	14	15	16	17	18	19
20	21	22	23	24	25	26
27	28	29	30	31		

AUGUST 2025						
Su	M	T	W	Th	F	Sa
					1	2
3	4	5	6	7	8	9
10	11	12	13	14	15	16
17	18	19	20	21	22	23
24	25	26	27	28	29	30
31						

SEPTEMBER 2025						
Su	M	T	W	Th	F	Sa
	1	2	3	4	5	6
7	8	9	10	11	12	13
14	15	16	17	18	19	20
21	22	23	24	25	26	27
28	29	30				

OCTOBER 2025						
Su	M	T	W	Th	F	Sa
			1	2	3	4
5	6	7	8	9	10	11
12	13	14	15	16	17	18
19	20	21	22	23	24	25
26	27	28	29	30	31	

NOVEMBER 2025						
Su	M	T	W	Th	F	Sa
						1
2	3	4	5	6	7	8
9	10	11	12	13	14	15
16	17	18	19	20	21	22
23	24	25	26	27	28	29
30						

DECEMBER 2025						
Su	M	T	W	Th	F	Sa
	1	2	3	4	5	6
7	8	9	10	11	12	13
14	15	16	17	18	19	20
21	22	23	24	25	26	27
28	29	30	31			

JANUARY 2026						
Su	M	T	W	Th	F	Sa
				1	2	3
4	5	6	7	8	9	10
11	12	13	14	15	16	17
18	19	20	21	22	23	24
25	26	27	28	29	30	31

FEBRUARY 2026						
Su	M	T	W	Th	F	Sa
1	2	3	4	5	6	7
8	9	10	11	12	13	14
15	16	17	18	19	20	21
22	23	24	25	26	27	28

MARCH 2026						
Su	M	T	W	Th	F	Sa
1	2	3	4	5	6	7
8	9	10	11	12	13	14
15	16	17	18	19	20	21
22	23	24	25	26	27	28
29	30	31				

APRIL 2026						
Su	M	T	W	Th	F	Sa
			1	2	3	4
5	6	7	8	9	10	11
12	13	14	15	16	17	18
19	20	21	22	23	24	25
26	27	28	29	30		

MAY 2026						
Su	M	T	W	Th	F	Sa
					1	2
3	4	5	6	7	8	9
10	11	12	13	14	15	16
17	18	19	20	21	22	23
24	25	26	27	28	29	30
31						

JUNE 2026						
Su	M	T	W	Th	F	Sa
	1	2	3	4	5	6
7	8	9	10	11	12	13
14	15	16	17	18	19	20
21	22	23	24	25	26	27
28	29	30				

Modified Year-Round Calendar

Semesters/Quarters

1st semester August 6-December 19

1st quarter August 6-October 8

2nd semester January 7-May 29

2nd quarter October 13-December 19

3rd quarter January 7-March 17

4th quarter March 18-May 29

Progress Reports

Quarter 1 September 5

Quarter 2 November 14

Quarter 3 February 12

Quarter 4 April 24

Report Card Distribution

Quarter 1 October 17

Quarter 2 January 9

Quarter 3 March 27

Quarter 4 June 5

Accountability Days

October 8 - 45th day

March 17 - 135th day

Holidays/Vacation

July 4 Independence Day

September 1 Labor Day

October 9-10 No School

November 4 Election Day

November 11 Veterans Day

November 26-28 Thanksgiving Break

December 22-January 6 Winter Break

January 19 Martin Luther King Jr. Day

February 16 Presidents' Day

February 17-18 No School

April 3 - Good Friday

April 13-17 Spring Break

May 25 Memorial Day

June 19 Juneteenth

Weather make-up days

*If Needed or No School

December 22

January 5

March 23

Early Dismissal for Students

October 8

February 12

March 20

Professional Development

*No School for Students

July 30 - August 5

January 6

February 13

June 1 - 3

	Full day for students
	No school for students
	First day back for students
	Early dismissal for students
	Weather make-up day
	In-service day for staff

Graduation for High Schools

June 1, 10am - Bluffton High

June 1, 7pm - Battery Creek

June 2, 10am - Hilton Head Island High

June 2, 7pm - Whale Branch Early College

June 3, 10am - May River High

June 3, 7pm - Beaufort High

June 4 or 5, 7pm - Make up

*Summer Graduation - August at BCHS

Board Approved 2/6/24

Pathways to Professions



MEDTech

The logo features the word "MEDTech" in a bold, sans-serif font. The "MED" is in a dark red color, and the "Tech" is in a dark blue color. A black stethoscope is integrated into the design, with its tubing forming a line that passes through the letters. A thick, green, brush-like stroke is positioned behind the "Tech" portion of the logo.

beaufortschools.net