



Lake Washington
School District

Facility Advisory Committee Meeting FAC 2024-25

Welcome to
Redmond Middle School
Thursday, January 16, 2025
5:30-7:30





Agenda – 1/16/25

Focus: *Creating processes to share information and ideas for ongoing improvement of LWSD facilities plans*

- 5:30-5:45: **Welcome & Overview**
- 5:45-6:30: **Information Sharing & Input**
 - Updated FAC Work Plan 2024-25
 - Legislative Update
 - Project Updates
- 6:30-6:35: **Break**
- 6:35-7:00: **Information Sharing & Input**
 - Clean Buildings Legislation
 - Sustainability
- 7:00-7:30: **Facility Tour – Redmond Middle School**



January Check-In

Winter: Love It or Hate It?

Updated FAC Work Plan

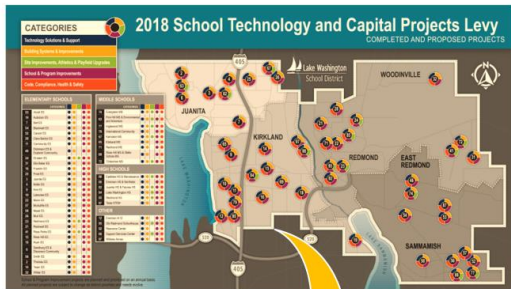
Information and Next Steps



FAC Outcomes

- Share updates and information between funding measures
 - Project Updates
 - Financial updates/status
- Understanding ongoing legislative and regulatory requirement
- Provide feedback to strengthen community engagement opportunities
- ***Develop and provide input on future funding measures***





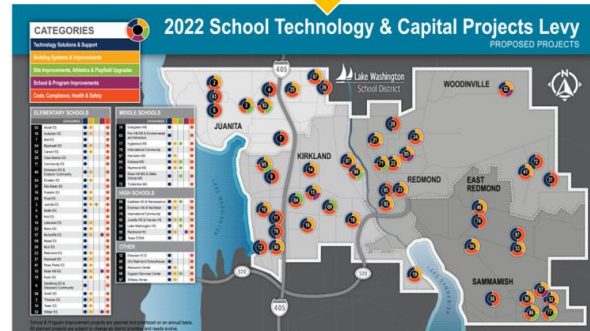
2022 School Technology & Capital Projects (4-year Levy)

Upgrades critical systems throughout the district

Replaces the previous levy (2018), which expired at the end of 2022.

Authorizes collection for four years of an annual levy for capital each year through 2026.

Includes funding for both district facilities and for technology.



A more detailed look at the Facilities portion of the Capital Projects Levy



Building Systems & Improvements



Site Improvements, Athletics & Playfield Upgrades



School & Program Improvements



Code Compliance, Health & Safety



Total average cost per year: \$15.8 million

Previous FAC Discussion

5/16/24 @ ORSH



ALCOTT ES HVAC UPGRADE



BELL ES



FINN HILL MS

Building Systems & Improvements

Envelope Enhancements: Baker ES

Flooring Improvements: Bell ES, Finn Hill MS, Redmond HS, Redmond MS

Operable Gym Wall Replacement: Juanita ES

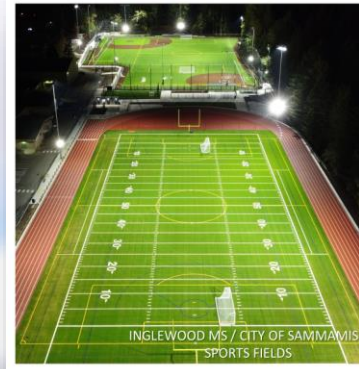
HVAC Controls System Upgrades: Audubon ES, Inglewood MS, Juanita ES, Lakeview ES, Mann ES, SSC, Wilder ES

HVAC Upgrades: Alcott ES, Dickinson ES, Eastlake HS, Evergreen MS, Finn Hill MS, Redmond ES, Redmond HS, Resource Center

Intercom Upgrades: Eastlake HS, Redmond MS

Lighting Improvements: Keller ES, Resource Center

Community Pool Upgrades: Juanita HS



INGLEWOOD MS / CITY OF SAMMAMISH
SPORTS FIELDS



JUANITA HS



EVERGREEN MS



INGLEWOOD MS



BELL ES



LAKE WASHINGTON HS

Site Improvements, Athletics and Playfield Upgrades

Site Improvements: Baker ES, Bell ES

Water line replacement: Support Services Center

Bleacher Enhancements: District Wide

Parking Lot Improvements: Lake Washington HS

Field Improvements Inglewood MS (City of Sammamish Partnership)



KELLER ES



EVERGREEN MS



THOREAU ES



EINSTEIN ES

Code Compliance, Health & Safety

Access Controls Upgrades: Thoreau ES

ADA Upgrades: Evergreen MS

Fencing Improvements: Redmond ES

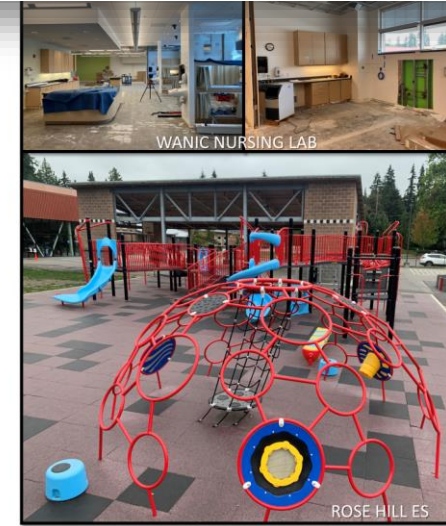
Fire, Life Safety System Upgrades: McAuliffe ES, Kirkland MS, Wilder ES

Plumbing Improvements: Evergreen MS, McAuliffe ES

Safety Improvements: Evergreen MS, Rose Hill MS

Structural Upgrades: Einstein ES

Water Bottle Filling Stations: Juanita ES, Thoreau ES, Sandburg ES, Keller ES, Frost ES, Muir ES



WANIC NURSING LAB



ROSE HILL ES

School & Program Improvements

Alcott ES: Update Gym and Commons

Transition Academies: YWCA and Together Center

WANIC: Nursing Lab Classroom Renovation (OSPI)

Eastlake HS: Accessible Restroom Upgrade

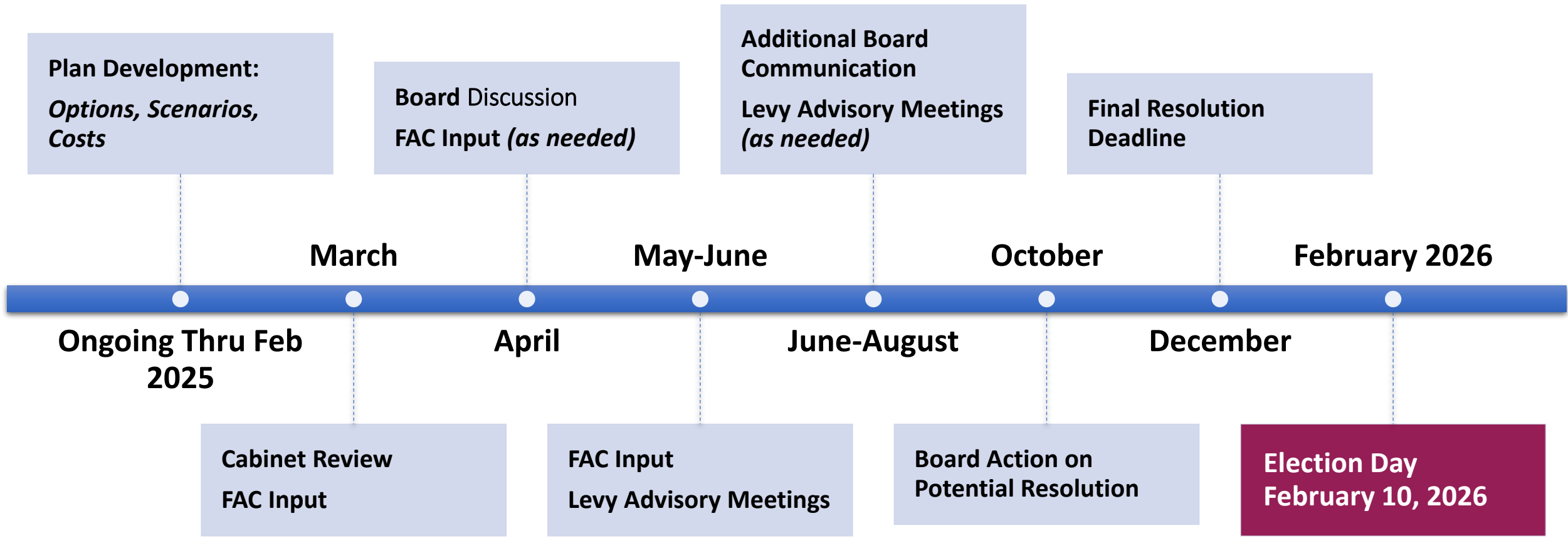
Rose Hill ES: New Accessible Playground

Previous FAC Discussion

10/17/24 @ Kirk

Technology and Capital Projects Levy Draft Timeline February 2026 Election

Next Steps



FAC Work Plan

Themes from October Input

- Design & Construction
- Clean Buildings & Sustainability
- Facilities Care & Maintenance
- Traffic Safety
- Community Engagement



Date	Location	Topics
Quarterly, 3 rd Thursday/month	5:30-7:30	Content of agendas may evolve
October 17	Peter Kirk Elementary Kirkland	<ul style="list-style-type: none">• Facility Plans & Phase 1 Progress• Levy: Updates & Input• 2024-25 FAC Work Plan• Facility Tour: Aligning Facility Design with Program Plans
November 21 Cancelled	TBD	• Pending Levy Measure Results
January 16	Redmond Middle School	<ul style="list-style-type: none">• Project Updates• Clean Buildings Legislation• Sustainability Updates• Facility Tour: Design & Construction
March 20	Emerson Campus	<ul style="list-style-type: none">• 2026 Technology & Capital Projects Levy Input• Community Engagement Planning• Facility Tour: Design & Construction
May 15	TBD	<ul style="list-style-type: none">• Project Updates• 2026 Technology & Capital Projects Levy Input• Community Engagement Planning• Facility Tour: Design & Construction



LEGISLATIVE UPDATE



2025 LEGISLATIVE SESSION

- Lake Washington is represented by four different legislative districts.
- In the new session we will have a new state senator and two new state representatives
 - Newly-appointed Senator Vandana Slatter
 - Newly-appointed Representative Osman Salahuddin of the Redmond City Council
 - TBD appointment to fill Representative Tana Senn's seat
- Session began January 13, ends April 27
 - A “long” session of 105 days
 - Legislators will be largely focused on developing a new biennial budget that addresses the projected budget deficit

LAKE WASHINGTON LEGISLATIVE PRIORITIES



- Urgent Priorities shared by districts, education associations across the state
 - Fully fund special education
 - Since 2020, Lake Washington has been underfunded by \$87.8 million
 - Update transportation formula and fully fund
 - Currently unpredictable and impossible to budget
 - Adjust Materials, Supplies, Operating Costs (MSOC)
 - Funding does not keep up with inflation
 - Insurance costs have increased \$4.2 million since 2017
 - Over the last five years LW has been underfunded for substitute teachers by \$29 million

STATUTE CORRECTION FOR LGO BOND USAGE FRONT FUNDING BILL

- Limited General Obligation (LGO) bonds (non-voted bonds) are a tool that can be used to utilize funds more quickly.
- Use of LGO funds is limited to improvements and additions—not allowing new construction
- SB 5095, introduced by Senator Dhingra will allow districts to use LGO funds for all capital construction projects
 - The House companion bill by Representative Callan will be introduced shortly
- Including new construction as an acceptable use would:
 - Create consistency across funding types
 - Allow districts to front-fund capital levy funds more quickly
 - Help keep construction costs down and save taxpayer money
 - NO COST to the state
- Supported by other districts (notably Central Valley, Vancouver, Issaquah)

LIMITED GENERAL OBLIGATION BOND LANGUAGE CORRECTION

RCW 28A.530.080 Additional authority to contract indebtedness— Notice.

(1) In addition to the authority granted under RCW 28A.530.010, a school district may contract indebtedness for any purpose specified in RCW 28A.530.010 (2), ~~(4), and through (5)~~ or for the purpose of purchasing any real or personal property, or property rights, in connection with the exercise of any powers or duties which it is now or hereafter authorized to exercise, and issue bonds, notes, or other evidences of indebtedness therefor without a vote of the qualified electors of the district, subject to the limitations on indebtedness set forth in RCW 39.36.020(3).

RCW 28A.530.010 Directors may borrow money, issue bonds.

The board of directors of any school district may borrow money and issue negotiable bonds therefor for the purpose of:

- (1) Funding outstanding indebtedness or bonds theretofore issued; or
- (2) For the purchase of sites for all buildings, playgrounds, physical education and athletic facilities and structures authorized by law or necessary or proper to carry out the functions of a school district; or
- (3) For erecting all buildings authorized by law, including but not limited to those mentioned in subsection (2) of this section immediately above or necessary or proper to carry out the functions of a school district, and providing the necessary furniture, apparatus, or equipment therefor; or**
- (4) For improving the energy efficiency of school district buildings and/or installing systems and components to utilize renewable and/or inexhaustible energy resources; or
- (5) For major and minor structural changes and structural additions to buildings, structures, facilities and sites necessary or proper to carrying out the functions of the school district;

FACILITIES BILLS

HEARING IN SENATE TODAY – DISTRICT PROVIDED TESTIMONY

Bill No.	Description
SB 5095/	Concerning school districts' authority to contract indebtedness for school construction
SB 5186/ SJR 8200	Concerning school district elections (55% approval)/Amending the constitution to allow 55 percent of voters voting to authorize school bonds
SB 5190	Allowing school districts to request extensions to state energy performance standard deadlines for K-12 buildings

WHAT YOU CAN DO

1

Participate in hearings

- Testify in person or virtually
- Submit written testimony
- “Sign in” for or against

2

Write to your legislators

- Keep messages short
- Explain direct impacts/concerns
- Make a specific ask

3

Reach out to LW staff if you have questions about our priorities or positions

ALCOTT ELEMENTARY SCHOOL
Redmond / King County




Built:	1986
Permanent Capacity:	483 students
Current Enrollment:	634 students
Current Portables:	12
Proposed Added Capacity:	207



Rebuild and Enlarge
Potential Open: 2027

KAMIAKIN MIDDLE SCHOOL
Juanita/Kirkland




Built:	1974
Permanent Capacity:	570 students
Current Enrollment:	607 students
Current Portables:	7
Proposed Added Capacity:	330



Rebuild and Enlarge
Potential Open: 2029

SMITH ELEMENTARY SCHOOL
Sammamish



Built:	1988
Permanent Capacity:	483 students
Current Enrollment:	572 students
Current Portables:	8
Proposed Added Capacity:	207



Rebuild and Enlarge
Potential Open: 2031

EVERGREEN MIDDLE SCHOOL
Redmond/King County



Built:	1983
Permanent Capacity:	796 students
Current Enrollment:	806 students
Current Portables:	13
Proposed Added Capacity:	104



Rebuild and Enlarge
Potential Open: 2031

FIELDHOUSE AND COMMUNITY POOL at JUANITA HIGH SCHOOL
Juanita/Kirkland



Built: 1971

- Not updated with JHS in 2016
- 600 average monthly student swim lessons
- Community organization use
- Only 4 restroom stalls for entire building








Modernization Scope

- Refurbish pool and infrastructure
- Replace HVAC/Mechanical systems
- Modernize locker rooms & restrooms
- Update windows, doors & railings
- Upgrade fire/life/safety systems
- Upgrade lighting & electrical systems
- Modernize PE and support spaces
- Expand front entrance for improved ingress and egress to ensure safety and participant flow

Modernize and Update
Potential Open: 2028

Project Updates

Project Updates – Phase 2 Building Excellence

PROJECT	SCOPE	STATUS
 ALCOTT ELEMENTARY SCHOOL Redmond/King County	Rebuild and Enlarge	Design/Permitting <i>GC/CM:</i> BNBuilders <i>Architect:</i> Mahlum
 KAMIAKIN MIDDLE SCHOOL Juanita/Kirkland	Rebuild and Enlarge	Pre-Design <i>Design Builder:</i> Lease Crutcher Lewis <i>Architect:</i> Mithun
 SMITH ELEMENTARY SCHOOL Sammamish	Rebuild and Enlarge	Pre-Design <i>GC/CM:</i> BNBuilders <i>Architect:</i> Mahlum
 EVERGREEN MIDDLE SCHOOL Redmond/King County	Rebuild and Enlarge	Pre-Design <i>Design Builder:</i> Lease Crutcher Lewis <i>Architect:</i> Mithun
 FIELDHOUSE AND COMMUNITY POOL at JUANITA HIGH SCHOOL Juanita/Kirkland	Modernize and Upgrade	Pre-Design <i>GC/CM:</i> GLY Construction <i>Architect:</i> Miller Hayashi

Project Updates – Phase 2 Building Excellence

PROJECT

SCOPE

STATUS



ALCOTT ELEMENTARY SCHOOL
Redmond/King County

Rebuild and Enlarge

Design/Permitting
GC/CM: BNBuilders
Architect: Mahlum



KAMIAKIN MIDDLE SCHOOL
Juanita/Kirkland

Rebuild and Enlarge

Pre-Design
Design Builder: Lease Crutcher Lewis
Architect: Mithun



SMITH ELEMENTARY SCHOOL
Sammamish

Rebuild and Enlarge

Pre-Design
GC/CM: BNBuilders
Architect: Mahlum



EVERGREEN MIDDLE SCHOOL
Redmond/King County

Rebuild and Enlarge

Pre-Design
Design Builder: Lease Crutcher Lewis
Architect: Mithun



**FIELDHOUSE AND COMMUNITY POOL
at JUANITA HIGH SCHOOL**
Juanita/Kirkland

Modernize and Upgrade

Pre-Design
GC/CM: GLY Construction
Architect: Miller Hayashi

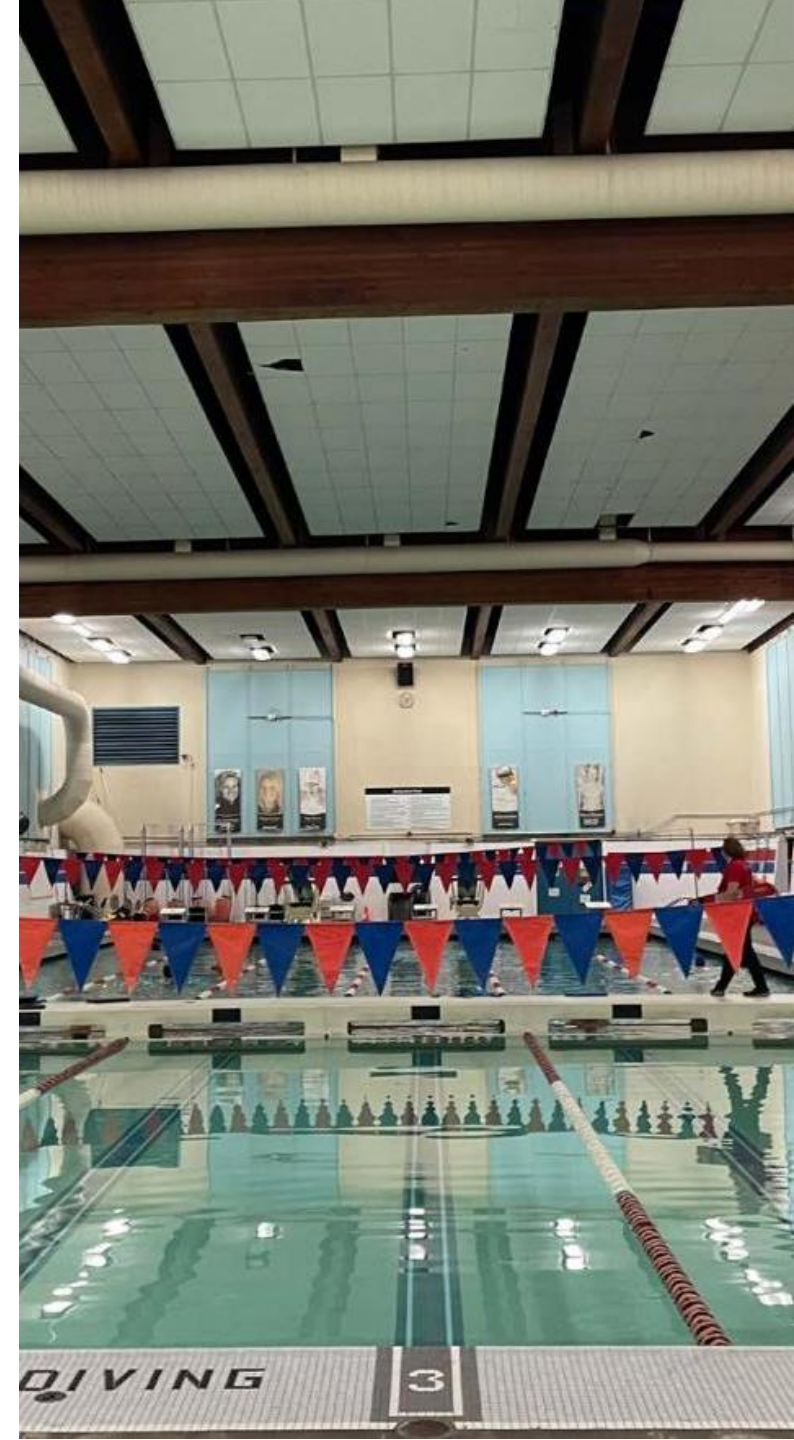
Fieldhouse and Community Pool @ JHS

Improvements for Fall 2025:

- Upgrade/replace Full roofing system
- Upgrade HVAC equipment
- ADA upgrades
- Upgrade Pool infrastructure and equipment
- Upgrade Pool finish, deck and viewing area
- Upgrade Pool locker rooms
- Fieldhouse ceiling fans

Remaining Modernization Scope: \$25.1M

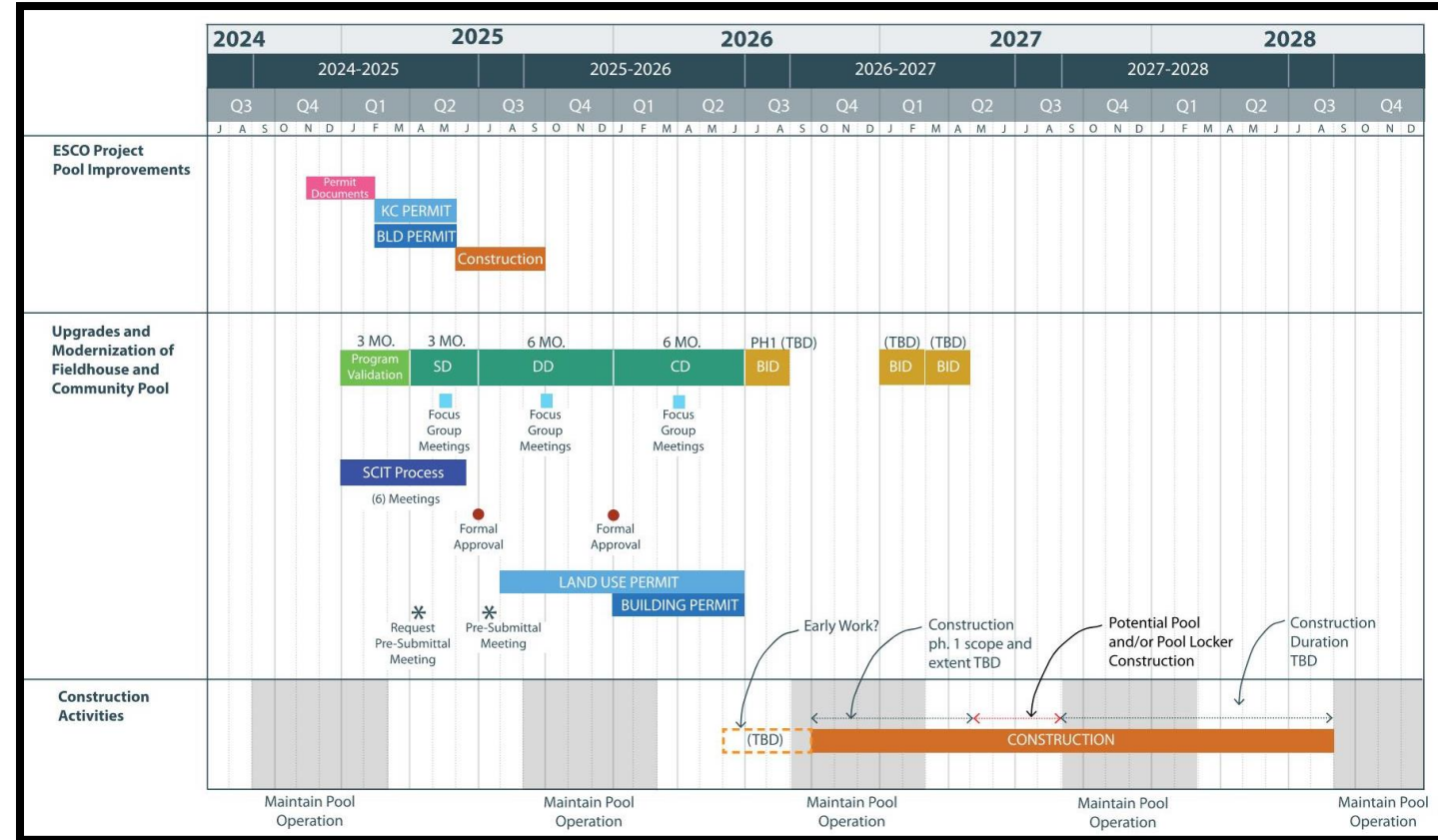
- Upgrade boiler system and remaining air handling units
- Modernize locker rooms & restrooms
- Update windows, doors & railings
- Upgrade fire/life/safety systems
- Upgrade lighting & electrical systems
- Modernize PE and support spaces
- Expand front entrance for improved access



Fieldhouse and Community Pool @ JHS Project Update

Next Steps

- Current Phase: Pre-Design
- GC/CM and Designer selected
- Stakeholder engagement includes:
 - Visioning
 - SCIT
 - Focus Groups
- Next Steps: Design/Permitting Phase



Pre- Design

Design & Permitting

Construction

Occupancy

Fieldhouse and Community Pool @ JHS

Proposed SCIT Members

- Associate Principal, JHS
- Athletic Director, JHS
- PE Department Head, JHS
- Director of Athletics and Activities
- Wave Aquatics
- SPLASHForward
- City Representatives (Kirkland, Kenmore, Woodinville, Bothell)
- ***Other members?***



Break - Take 5!

Take 5 minutes to grab a snack and stretch your legs!

Coming Up:

- Sustainability Updates
- Facilities Tour:

*Redmond Middle School
Addition*



Sustainability & Clean Buildings

- Review & Updates
- Food Services Sustainability Roadmap (FSSR)
- HB1799 – Organics Management
- Discussion



Sustainability & Clean Buildings:

April 2024 FAC @ Tesla STEM HS



Sustainability in LWSD

- Legislative Requirements
 - 2024 Energy Code
 - Clean Buildings Act
 - WA Sustainable Schools Protocol
- LWSD Sustainable Practices

WA State Clean Building Performance Standard

What is it?

Clean Buildings Performance Standard (HB 1257) became law in 2019.

All existing commercial buildings over 50,000 Sq. ft. will need to meet set energy performance targets (EUI), or meet financial investment criteria

Owners must also develop and implement per-building Energy Mgmt. Plans and O&M Programs

** These "Tier 2" facilities must benchmark & submit documents only – EUI targets TBD*

Individual Buildings & EUI Targets

CBPS "Tier"	Gross Floor Area (sq ft)	Due Date*
Tier 1.A	>220,000	June 1, 2026*
Tier 1.B	90,000-220,000	June 1, 2027*
Tier 1.C	50,000-90,000	June 1, 2028*
Tier 2	20,000-50,000*	June 1, 2027*


* Energy tracking & operational programs must start at least one year prior to each deadline

WA State Clean Buildings Performance Standard

- Majority of sites are at or approaching EUI Targets
- Currently focusing on ~5 schools to meet Tier 1 Targets by due dates

2024 Energy Code Requirements

- The Washington State Energy Code update is based on the 2021 International Energy Conservation Code (IECC)
- It was adopted by the Washington State Building Code Council (SBCC) and will take effect on **March 15, 2024**
- Goals:
 - Reduce Carbon Emission
 - Integrate renewable energy
 - Improve Energy Efficiency Measures
- Increases School Design + Construction cost



Sustainable Construction - Energy



Geothermal loop
delivers efficient
heating/cooling



Efficient
electrical heat
pumps



Solar ready for
future expansion
of solar array



Ceiling fans for
multi-story
schools and
large common
spaces



High Efficiency
Lighting,
including Solar
Tubes



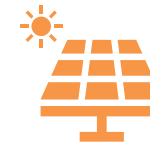
Energy Star Plus
appliances



Building
automation and
controls



*Electric vehicle
charging
stations



*Photovoltaic
panels on the
roof provide
solar power

**Newly included
in LWSD
Construction
Standards as
identified in
latest Energy
Code*

Sustainable Construction - Energy

- 30% reduction in energy use per square foot
- 37% reduction in natural gas usage
- Largest solar capacity of any school district in WA
- New construction performs 20% better than energy code
- Over \$20.2M in utility savings



Reductions since 2006

Sustainable Construction – Resources



Prioritize
preservation of
mature trees



Onsite
groundwater
infiltration and
stormwater
detention



Use of regional
and local
building
materials



Water conservation,
including water
systems and
intentional
landscaping



Organic waste
management



Cross laminated
timber

Sustainable Construction - Resources

- 30% reduction in water usage
- 80% reduction in irrigation water usage (~\$500k savings/year)
- 8x Award Winner: King County Best Workplace for Waste Prevention & Recycling
- Over 1.5 million: Water bottles filled since 2016
- 33 Schools: Certified by King County Green Schools for their commitment to reducing waste and recycling

Reductions since 2008





LWSD Sustainability: Organics Management

FSSR Introduction

The Food Services Sustainability Roadmap (FSSR) is a district-wide, coordinated, systematic approach to reducing food waste, increasing organic material diversion rates and improving sustainability efforts at every level of the school district.





FSSR Goals

1. District coordination of food sustainability efforts
2. Standardization of food sustainability protocols
3. Reduction of food waste
4. Reduction of single-use items
5. Educate, train, monitor and maintain

FSSR Project Approach

- **All kitchens composting**
- **All school cafeterias composting**
 - Phase 1
 - Phase 2
- **Annual Waste Audits**
 - At least one school per year
- **Transition to reusables as feasible (Ongoing)**
 - Tableware / Flatware
 - Pilot studies
- **Staff and student training (Ongoing)**
 - Increase diversion rates
 - Decrease contamination rates



HB-1799 Organics Management Law

- Legislation passed in March 2022
- Requires collection of organic food waste
- Compliance
 - Phase 1 – January 1, 2024 (8 cubic yards/week)
 - 9 Schools / All Kitchens
 - Phase 2 - January 1, 2025 (4 cubic yards/week)
 - All Schools
 - Implementation includes standard collection bins, signage, and hauling services



Phase 1 - Implementation



- **Implementation - January 2024**
- **Comprehensive High Schools**
- **Large Middle Schools**
- **All kitchens**
- **2 of 9, Phase 1 schools were already collecting organic waste**

High Schools

- Eastlake HS
- Juanita HS
- Lake Washington HS
- Redmond HS

Middle Schools

- Finn Hill MS
- Inglewood MS
- Kamiakin MS
- Redmond MS
- Rose Hill MS

Other

- Kitchens at All Schools

Phase 2 - Implementation

- **Implementation - January 2025**
 - All Schools
- **38 of 46 Phase 2 schools already collecting organic waste**
 - High Schools (3 of 4 currently collecting organic waste)
 - Middle Schools (8 of 9 currently collecting organic waste)
 - Elementary Schools (27 of 33 currently collecting organic waste)
 - Other: Admin Buildings / Pre-K included but not required



Next Steps

- **School appoint lunchroom leader(s):** January 2025
 - Green Teams / Staff member / Custodial Services
 - Explains what goes in the garbage, recycling, compost, and liquid bins
- **Compost collection:** Scheduled
- **Distribution of bins/signage to custodians:** December
- **Custodial training:**
 - Weeks of 12/16 and 12/23
 - No liners; No compostable Liners
- **Liquids Bins:** Orange
- **Compost Bins:** Green



City of Redmond Compost Bin



Slim-Jim Compost Bin

8 Schools/ 3 Other Buildings

High Schools	Middle Schools	Elementary Schools	Other*
•Tesla STEM HS	•Timberline MS	•Carson ES •Frost ES •Lakeview ES •Muir ES •Rose Hill ES •Thoreau ES	•Resource Center •Support Services •Old Redmond Schoolhouse

Resources & Supports



- **School Supports**

- Green Teams: Hannah Ljunggren, Sustainability Manager
- Hannah to schedule time with sites new to organic waste collection to discuss needs and supports
- Training video available for students
- Custodial: Mladen Blagojevic
- Nutrition Services: Ralph Peschek

8 Schools/ 3 Other Buildings

High Schools	Middle Schools	Elementary Schools	Other*
•Tesla STEM HS	•Timberline MS	•Carson ES •Frost ES •Lakeview ES •Muir ES •Rose Hill ES •Thoreau ES	•Resource Center •Support Services •Old Redmond Schoolhouse

Sustainability Discussion

- What insights about the topic can you share?
- What are you hearing in the community?
- What should we be considering?
- What should we be communicating?



FAC Schedule



Date Quarterly, 3 rd Thursday/month	Location 5:30-7:30	Topics Content of agendas may evolve
October 17	Peter Kirk Elementary Kirkland	<ul style="list-style-type: none"> Facility Plans & Phase 1 Progress Levy: Updates & Input 2024-25 FAC Work Plan Facility Tour: Aligning Facility Design with Program Plans
November 21 Cancelled	TBD	<ul style="list-style-type: none"> Pending Levy Measure Results
January 16	Redmond Middle School	<ul style="list-style-type: none"> FAC Plans & Project Updates Clean Buildings Legislation Sustainability Updates Facility Tour: Design & Construction
March 20	Emerson Campus	<ul style="list-style-type: none"> 2026 Technology & Capital Projects Levy Input Community Engagement Planning Facility Tour: Design & Construction
May 15	TBD	<ul style="list-style-type: none"> Project Updates 2026 Technology & Capital Projects Levy Input Community Engagement Planning Facility Tour: Design & Construction

Facility Tour: Redmond Middle School



Laura DeGooyer
Capital Program Manager



Facility Tour: Redmond Middle School



Laura DeGooyer
Capital Programs Manager

Photo:
1990



Photo:
2001

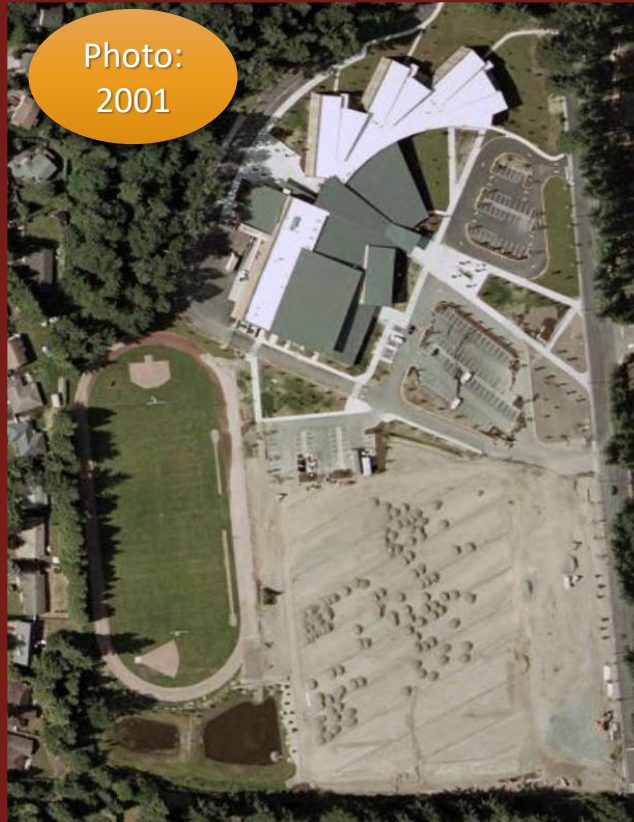


Photo:
2021

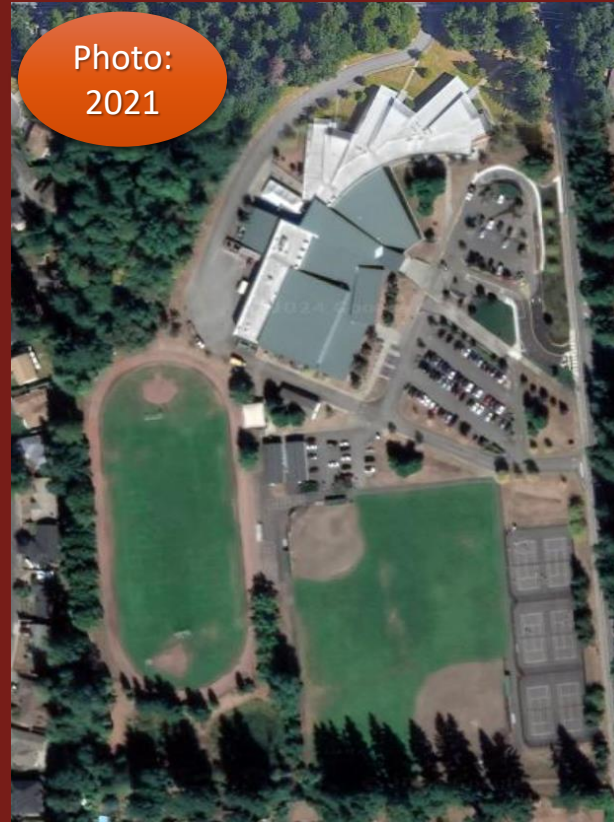


Photo:
2024



1958

- Redmond Junior High School opens.
- Playfields used by neighboring schools

2001

- School rebuilt to north
- Ball fields and courts rebuilt to south
- Main track/field maintained

2011-16

- Portables added
- 2021
- Parking lot updated

2024

- New Roof
- Court resurface
- Classroom Addition

Redmond Middle School Classroom Addition

- **Scope:** Increasing permanent capacity and science spaces
 - 8 Classrooms
 - 2 Science
 - 6 General
 - Special Education Supports
 - Enlarged SPED vestibule
 - Interior courtyard providing SPED access
 - Enlarged staff room
- **Construction:** June 2023 - August 2024

