

REGIONAL GOVERNANCE COUNCIL

Meeting Notes

September 14, 2022 | 11:00 AM – 2:00 PM

Attendance

Steve Schenewerk
Michael Carter
Dena Haudenschild
Rhonda Janecke
Chellsey Maher
Heather Robinson

Carmen Ellis
Hilary Mankofsky
Erin Watson
Gillian Wesenberg
Julie Hurley
Vanessa Pingleton

Cynthia Hurkes
Charlene Shaw
Michelle Bassett
Athena Wikstrom
Danielle Walker
Heidi McGowan

Please note: The Regional Governance Council (RGC) was held virtually due to COVID-19 (Coronavirus) concerns.

Welcome and Introductions

Chair, Steve Schenewerk welcomed members of the Regional Governance Council (RGC) and individuals introduced themselves.

Early Learning Division (ELD) Regional System Assessment

Gillian introduced the Early Learning Division (ELD) Regional System Assessment which will focus on Raise Up Oregon Objective 2: Families have access to high-quality (culturally responsive, inclusive, developmentally appropriate) affordable early care and education that meets their needs.

Erin Watson, a national consultant with Weaving Change, is joining today and will facilitate the Regional Assessment discussion. Erin shared the Regional System Assessment is designed to determine what is helping and also hindering access to high-quality early care and education. Today's process will walk the RGC through the eight ecosystem conditions that affect access. If the region can target efforts around these ecosystem conditions, it will give us the "biggest bang for our buck." Ecosystem conditions include:

- Shared Mindsets
- Goals
- Decision-Making
- Policies and Practices
- Connections
- Program and Opportunity Components
- Human Resources
- Financial Resources

The Regional Governance Council split into four groups to explore conditions by reading their definitions, reviewing examples, and discussing potential Regional Assessment questions based on these conversations. A facilitator will take notes in a Google Doc that can be found at: https://docs.google.com/document/d/1g8U9eg-JLE2V3pKh-rkeposGK9MXI_D_LVX1ymB7kpw/edit?usp=sharing.

Regional Governance Council members are encouraged to reflect about the ecosystems conditions that were discussed in today's small break-out groups. If members have any additional feedback to include, please add to the Google Doc shared above. Input could include information that was not captured during the break-out groups or information about categories members did not have a chance to review in their group.

Reflection

When breakout groups reconvened, members discussed the process and found there were common themes between many of the ecosystem conditions. Members were also reminded of how the small pieces fit together

as part of a whole. They also noted that parent input is invaluable throughout the process and thanked Chellsey for bringing her important parent lens into the conversation.

Next Steps

Next, the South-Central Early Learning Hub staff will review the document with Erin, develop common themes, and “clean-up” the Ecosystems document.

Local Professional Advisory Committees (PAC) and Governance Councils will have a chance to go through this process during their September and October meetings. The final document will be shared once all feedback is received and reviewed by Hub staff.

Priorities for the Next Year

Carmen Ellis, Community Systems Director/Interim Early Learning Hub Coordinator for the Early Learning Division (ELD) joined the Regional Governance Council to share an update on Early Learning Hub contracted deliverables.

There is an upcoming amendment to Early Learning Hub contracts coming out soon which will add a new contract deliverable designed for Hubs to help with the current Raise Up Oregon 2.0 revision. The deliverable will require Hubs to host a minimum of two community listening sessions, one with families and the other will be determined collectively by all of the Early Learning Hub Directors. The ELD will be providing materials to support this process and ELD staff will be available for assistance throughout the process. Hubs will receive an additional ten thousand dollars in funding to complete the deliverable; Hubs will decide how funding will be expended. For example, hire a facilitator or contract with an outside organization.

The deliverable is due to the division by March 31st, and will be reviewed by the Early Learning Council (ELC). ELC Chair, Sue Miller is leading the RUO 2.0 update with an ELD-staffed workgroup and two BUILD consultants supporting the work.

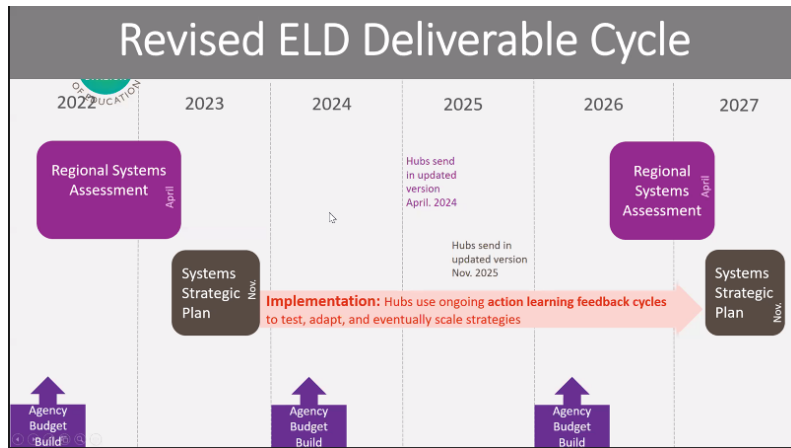
RUO 2nd Edition Roadmap (2022) Timeline can be found at: <https://oregonearlylearning.com/wp-content/uploads/2022/06/RUO-2nd-Edition-2022.pdf>.

There is no overlap between RUO 2.0 and Regional Assessment deliverable. RUO 2.0 is an overview of the entire RUO System Plan, while the Regional System Assessment will focus on one specific RUO objective.

Carmen noted that Early Learning Hub Governance Councils are different from some other program boards and councils. The RGC is charged with developing a vision for early childhood and guides the region in leadership and coordination. The council is an autonomous group that is also intended to create and approve budgets.

There has been a shift in the Scope of Work from the 2019-21 to the 2021-23 biennium. In the 2021-23 biennium, funding changes have been designed to create capacity for Hub work. Hubs are now required to have a minimum of 3.0 FTE in their staffing plan deliverable, with at least 1.0 FTE in Coordinated Enrollment. Other additions to the Scope of Work include the Regional System Assessment and the development of a Parent Leadership Council. Parent Leadership Councils will be a part of the Hub Governance Structure and must be in place by the end of the 2021-23 biennium. The Scope of Work also increases Hub support to build child care availability and capacity in coordination with local partners and joint Child Care Resource and Referral work. Hubs will also be tasked in convening partners and doing strategic work to prevent suspension and expulsion of children from early learning programs.

Carmen presented the Revised ELD Deliverable Cycle:



The ELD is currently in the 2022 process of building an Agency Budget which will be used to inform policy packages, request additional funding from the legislature, and implement any changes. In an effort to create the best Agency Budget, ELD Director, Deputy Director, and staff are working to combine ELD strategic plans with Early Learning Hub strategic plans.

Organizational Charts

At the June Regional Governance Council meeting, members requested additional organizational charts that could be shared with new administrators and staff to help with introductions to the South-Central Early Learning Hub and Early Learning Division.

Athena shared updated charts (see attached) for:

- South-Central Early Learning Hub Governance Model
- Early Learning Division/Department of Early Learning and Care Organizational Chart
- South-Central Early Learning Hub Staff Organizational Chart
- South-Central Early Learning Hub Governance Organizational Chart

Attached charts include suggested revisions:

- Added the new Early Learning Hub Coordinator, Hilary Mankofsky to the Early Learning Division (ELD) Organizational Chart.
- Removed “nominated” from Michael Carter’s Vice Chair role in the Hub’s Regional Governance Council. Michael Carter was elected during the September 2022 RGC meeting.

Athena also shared the South-Central Early Learning Hub Gantt Chart (see attached) which shows ELD contracted deliverables for the South-Central Early Learning Hub. No other Hub roles, such as Community UPLiFT are included in the Gantt Chart. Other roles do not have the same reporting timeframes as contract deliverables and are therefore not included.

Vice Chair Nomination / Budget Committee

Steve Schenewerk asked the group to entertain nominations for Vice-Chair of the Regional Governance Council. Michael Carter volunteered for the position. No other interested members of the RGC volunteered. Michael Carter received unanimous support from voting members of the council and was affirmed as Vice-Chair for the Regional Governance Council.

The RGC discussed and appointed a budget committee: Members will include Steve Schenewerk, Michael Carter, Rhonda Janecke, and Dena Haudenschild.

Kindergarten Readiness Partnership and Innovation (KPI) Funding Updates

The RGC meeting went over time and ended before Cynthia Hurkes provided an update on the Kindergarten Readiness Partnership and Innovation (KPI) Community Investment Funds. Over the summer, KPI released a










Community Investment Fund Request for Application (RFA) and received requests from interested programs. KPI developed an overview spreadsheet to share with the RGC. Voting members of the RGC will receive the summary spreadsheet via email for member review and approval. Members should direct any questions or comments about the overview to Cynthia at cynthia.hurkes@douglasesd.k12.or.us.

Next Meeting Date

December 7, 2022 – from 11:00 am – 3:00 pm

Ecosystem Conditions Cheat Sheet

What is helping and hindering the effectiveness of the early childhood system in your region? Consider the conditions below:

Conditions	Examples	Keywords
 <p>Mindsets Beliefs, values, narratives, assumptions, and attitudes that create a way of viewing reality for people who share them.</p>	Many believe child care is just babysitting instead of an opportunity to build healthy brains and improve lifelong outcomes.	<ul style="list-style-type: none"> • Value • Attitude • Culture • Narrative • Feel <ul style="list-style-type: none"> • Perception • Believe • Trust • Assume • Priority
 <p>Goals Stated and unstated aims, targeted outcomes, and purpose of organizations, initiatives, and systems - including accountability mechanisms.</p>	Regional organizations have targeted outcomes around reducing racial/ethnic disparities in child and family outcomes.	<ul style="list-style-type: none"> • Goals • Outcomes • Targets • Aims • Purpose <ul style="list-style-type: none"> • Impact • Mission • Benchmarks • Accountability
 <p>Decision-Making Processes How decisions are made, and who is included/excluded from these processes.</p>	Families have influence over decision-making about how to design programs and policies.	<ul style="list-style-type: none"> • Decisions • Power • Input • Influence <ul style="list-style-type: none"> • Membership • Family voice • “Never listens to ___”
 <p>Policies and Practices Formal and informal policies, practices, procedures, protocols, laws, standards, and norms.</p>	Some quality rating standards are not culturally responsive to the diversity of ECE providers in the region.	<ul style="list-style-type: none"> • Policies • Standards • Practices • Procedures • Eligibility • Legislation • Laws <ul style="list-style-type: none"> • Regulations • Routine • HIPAA, FERPA • “Not allowed” • “This is how we’ve always done it”
 <p>Connections Exchanges of information, referrals, learning, and resources between people and organizations.</p>	Information/data is being shared between cross-sector partners and with families in the community.	<ul style="list-style-type: none"> • Exchanges • Referrals • Network • Coordination • Co-location <ul style="list-style-type: none"> • Gathering and sharing of information, data, • Resource sharing • Communication
 <p>Human Resources People and their skills and knowledge.</p>	Many ECE providers still need to develop their skills in trauma-informed practices.	<ul style="list-style-type: none"> • Available staff • Volunteers • Credentials • Skills <ul style="list-style-type: none"> • “People don’t know how to___” • People don’t understand___”
 <p>Financial Resources Money and capital.</p>	Many ECE settings struggle to access funding for operational costs.	<ul style="list-style-type: none"> • Money • Funding <ul style="list-style-type: none"> • Cost • “Can’t afford ___”
 <p>Natural and Built Environment Aspects of the natural (e.g., land, water) and built (e.g., buildings, roads, internet) environment.</p>	Broadband internet is not yet accessible across the region, especially in rural communities.	<ul style="list-style-type: none"> • Building space • Physical infrastructure • Affordable housing <ul style="list-style-type: none"> • “Not enough safe parks” • “We don’t have the technology to do ___”
 <p>Program Components The array, accessibility, and quality of programs (e.g., Head Start, WIC), services (e.g., healthcare, public transit), and opportunities (e.g., jobs).</p>	High-quality, affordable child care slots are available to meet <i>some</i> of the needs and preferences of families in the region.	<ul style="list-style-type: none"> • Not enough slots/openings • Quality • Cultural responsiveness <ul style="list-style-type: none"> • Curriculum • Hard to get to • “___ is at the wrong times” • In some places but not others

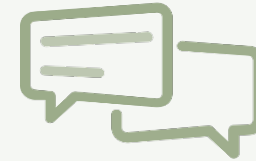
Adapted from: Watson, E.R & Collins, C. (Under Review). Putting the system in systemic racism; Foster-Fishman, P.G., & Watson, E.R. (2017). Understanding and promoting systems change. In M. Bond & C. Keys (Eds.). *Handbook of Community Psychology*; Meadows, D. H. (1999). Leverage points: Places to intervene in a system. Vermont, USA: *The Sustainability Institute*.

Regional Assessment Process

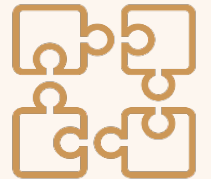
1 Figure out what you still need to learn about your selected RUO objective(s)...



2 Gather qualitative and quantitative data...



3 Make sense of the data and identify shared priorities for action...



Ecosystem Conditions

Shared Mindsets

Goals

Decision-Making

Policies and
Practices

Connections

Program and
Opportunity
Components

Human
Resources

Financial
Resources

Environment
Resources

Process

- We will break out into small groups
- Each group opens the Google Doc template and starts with their assigned ecosystem condition
- Small groups:
 - Read definition/examples and discuss assessment question
 - Record information and proposed new assessment questions in table
- After 15 minutes, each group will move to the next ecosystem condition page in the template
- We'll go through 4 rounds



Reflection

How was this process like for you?

What are some insights and ah-ha moments you had today?

Next Steps

Hub staff will do several more rounds of this process with other groups

Hub staff and Erin will review the template and send recommendations for what to focus on for regional assessment

In coming months we will discuss how to ask regional assessment questions with other perspectives



RAISE UP OREGON

2nd Edition Roadmap (2022)

Raise Up Oregon serves as Oregon's comprehensive state system plan for early childhood prenatal to age five, bringing together government leaders from early care and education, K-12, health, housing, and human services. Grounded in equity and the science of child development, Raise Up Oregon builds the firm understanding that it takes leaders from every system - together with families, communities, and the public and private sectors, to work together during this critical period of children's lives.

Since the Oregon Early Learning Council (ELC) adopted Raise Up Oregon in 2019 as the four-year state early childhood system plan, partners in the work have made significant progress in implementing recommendations. With the first edition coming to a close, a second edition of Raise Up Oregon is underway for release in 2023 to reflect the work accomplished so far, as well as today's reality, vision and strategies.

Driven by the ELC, the plan is created in partnership with five state agencies whose directors serve on the Council: Oregon Department of Education, Oregon Department of Human Services, Oregon Early Learning Division, Oregon Health Authority, and Oregon Housing and Community Services.

Raise Up Oregon is based on three core goals to drive positive change for Oregon's youngest children and families, the involvement of all sectors in the early childhood system, and the following five core values:

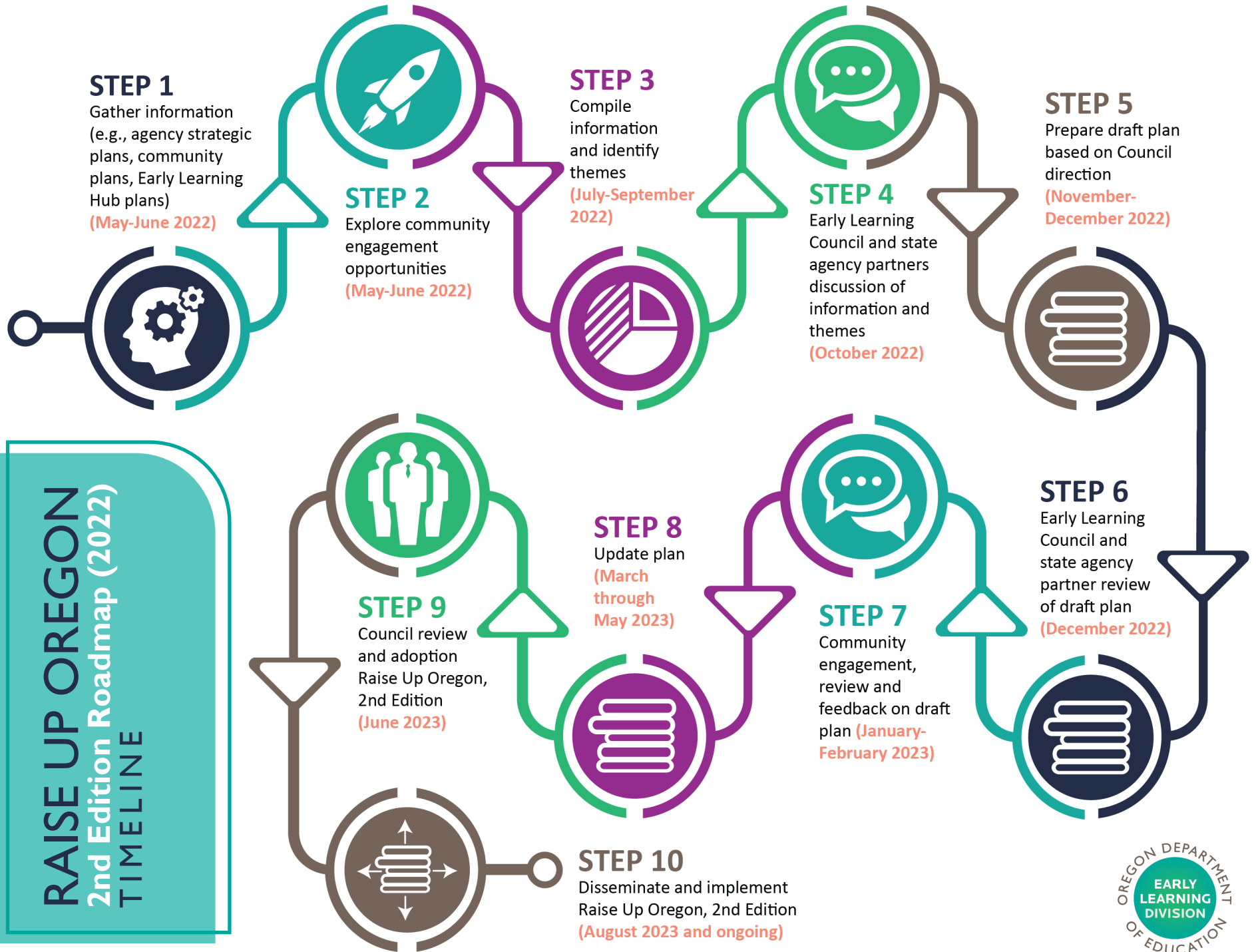
1. Embed equity throughout
2. Represent all sectors within the early learning system that support children prenatal through age five and their families
3. Provide comprehensive objectives and strategies that meet the needs of Oregon's young children and families
4. Address the whole child, nested in family and community
5. Focus on outcomes that support Oregon's young children and families.

Key steps in the process and associated timelines to implement in 2023 are outlined below. Community engagement is central to the plan's development, with multiple touchpoints for family, provider, and community voice to shape the system plan.



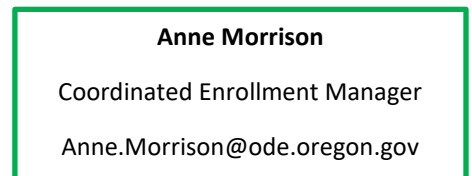
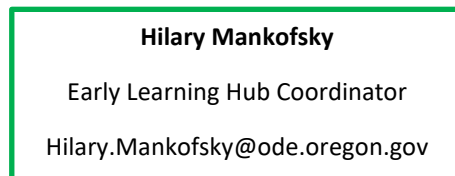
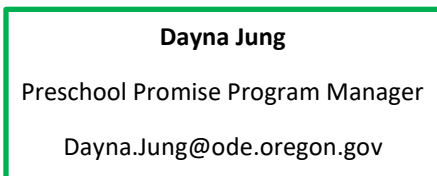
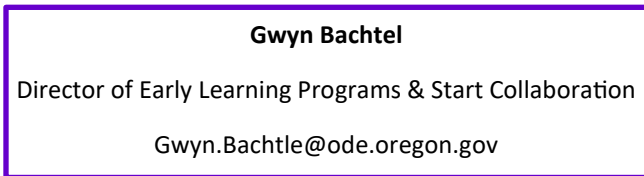
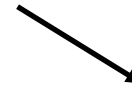
For more information, please contact **Remember (Remy) D. Watts**, Early Learning Council Administrator & Rule Coordinator, remy.watts@ode.oregon.gov, p: 503.947.0674 | c: 971.701.1535

RAISE UP OREGON 2nd Edition Roadmap (2022) TIMELINE



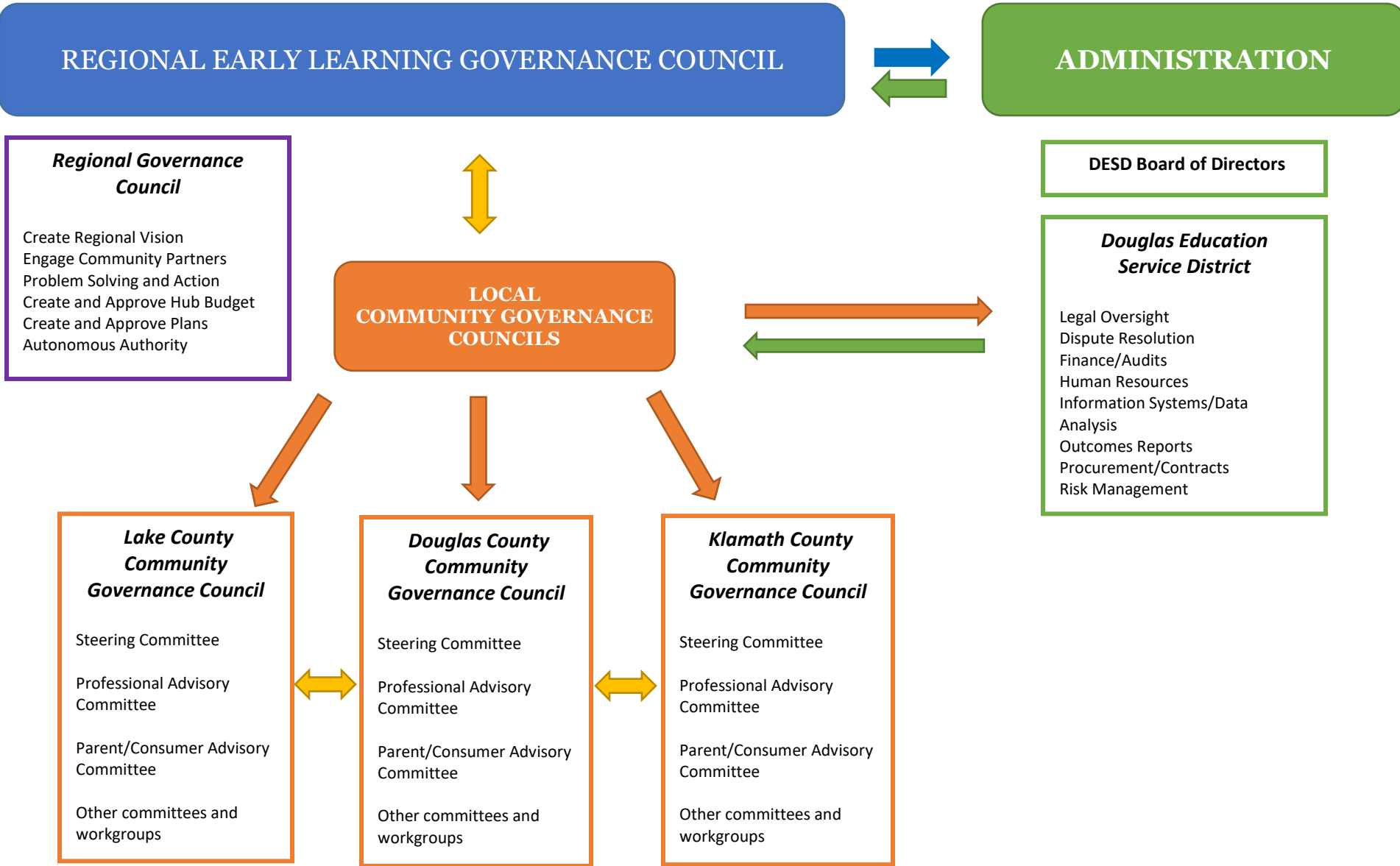
Early Learning Division / Department of Early Learning and Care

Organizational Chart



- For questions regarding Preschool Promise and Coordinated Enrollment, email PSP@ode.oregon.gov.
- For questions regarding Hub policy, email Hilary Mankofsky or Carmen Ellis.

South-Central Early Learning Hub Governance Model



REGIONAL EARLY LEARNING GOVERNANCE COUNCIL

ADMINISTRATION

Regional Governance Council

- Create Regional Vision
- Engage Community Partners
- Problem Solving and Action
- Create and Approve Hub Budget
- Create and Approve Plans
- Autonomous Authority

DESD Board of Directors

Douglas Education Service District

- Legal Oversight
- Dispute Resolution
- Finance/Audits
- Human Resources
- Information Systems/Data Analysis
- Outcomes Reports
- Procurement/Contracts
- Risk Management

LOCAL COMMUNITY GOVERNANCE COUNCILS

Lake County Community Governance Council

- Steering Committee
- Professional Advisory Committee
- Parent/Consumer Advisory Committee
- Other committees and workgroups

Douglas County Community Governance Council

- Steering Committee
- Professional Advisory Committee
- Parent/Consumer Advisory Committee
- Other committees and workgroups

Klamath County Community Governance Council

- Steering Committee
- Professional Advisory Committee
- Parent/Consumer Advisory Committee
- Other committees and workgroups

Hub Deliverables

ACTIVITY	START	DUE DATE													DELIVERABLE DEFINITION
			Jul-22	Aug-22	Sep-22	Oct-22	Nov-22	Dec-22	Jan-23	Feb-23	Mar-23	Apr-23	May-23	Jun-23	
Regional Systems Assessment	Jul-22	Apr-23	[Gantt bar spanning Jul-22 to Apr-23]												Determining successes and barriers to implementing Raise Up Oregon Objectives across the region
Coordinated Enrollment 2022 - 23	Jul-22	May-23	[Gantt bar spanning Jul-22 to May-23]												Review applications and enroll students for the 2025 - 26 school year
Early Childhood Service Analysis	Oct-22	Dec-22	[Gantt bar spanning Oct-22 to Dec-22]												Early Care and Education Sector Plan and Equity Update
Raise Up Oregon Engagement	Dec-22	Feb-23	[Gantt bar spanning Dec-22 to Feb-23]												Community Engagement Sessions led by the Hub to receive feedback on the Raise Up Oregon revisions (Raise Up Oregon 2.0)
Enrollment Plan	Jan-23	Mar-23	[Gantt bar spanning Jan-23 to Mar-23]												Hub Governance, Stewardship, and Parent Leadership groups determine how Coordinated Enrollment will be conducted for the coming school year
Annual Work Plan	Jan-23	Apr-23	[Gantt bar spanning Jan-23 to Apr-23]												Creating and Implementing Annual Work Plan based on Strategic Plan
Annual Budget	Jan-23	Apr-23	[Gantt bar spanning Jan-23 to Apr-23]												Hub Governance, Stewardship, and Parent Leadership groups determine and approve annual Hub Budget
Hub Demographics	Jan-23	May-23	[Gantt bar spanning Jan-23 to May-23]												Annual demographics reports
Coordinated Enrollment 2023-24	Mar-23	May-24	[Gantt bar spanning Mar-23 to May-24]												Review applications and enroll students for the 2025 - 26 school year
Equity Report	Apr-23	Apr-23	[Gantt bar spanning Apr-23 to Apr-23]												Report Annual Equity Orientation and Training for 2023 - 25
Systems Strategic Plan	Apr-23	Jan-24	[Gantt bar spanning Apr-23 to Jan-24]												Creating and Implementing Strategic Plan based on Regional Systems Assessments priorities

Additional Deliverables

- Quarterly Hub Report with fiscal and narratives
- Monthly Coordinated Enrollment report

Definitions

Raise Up Oregon

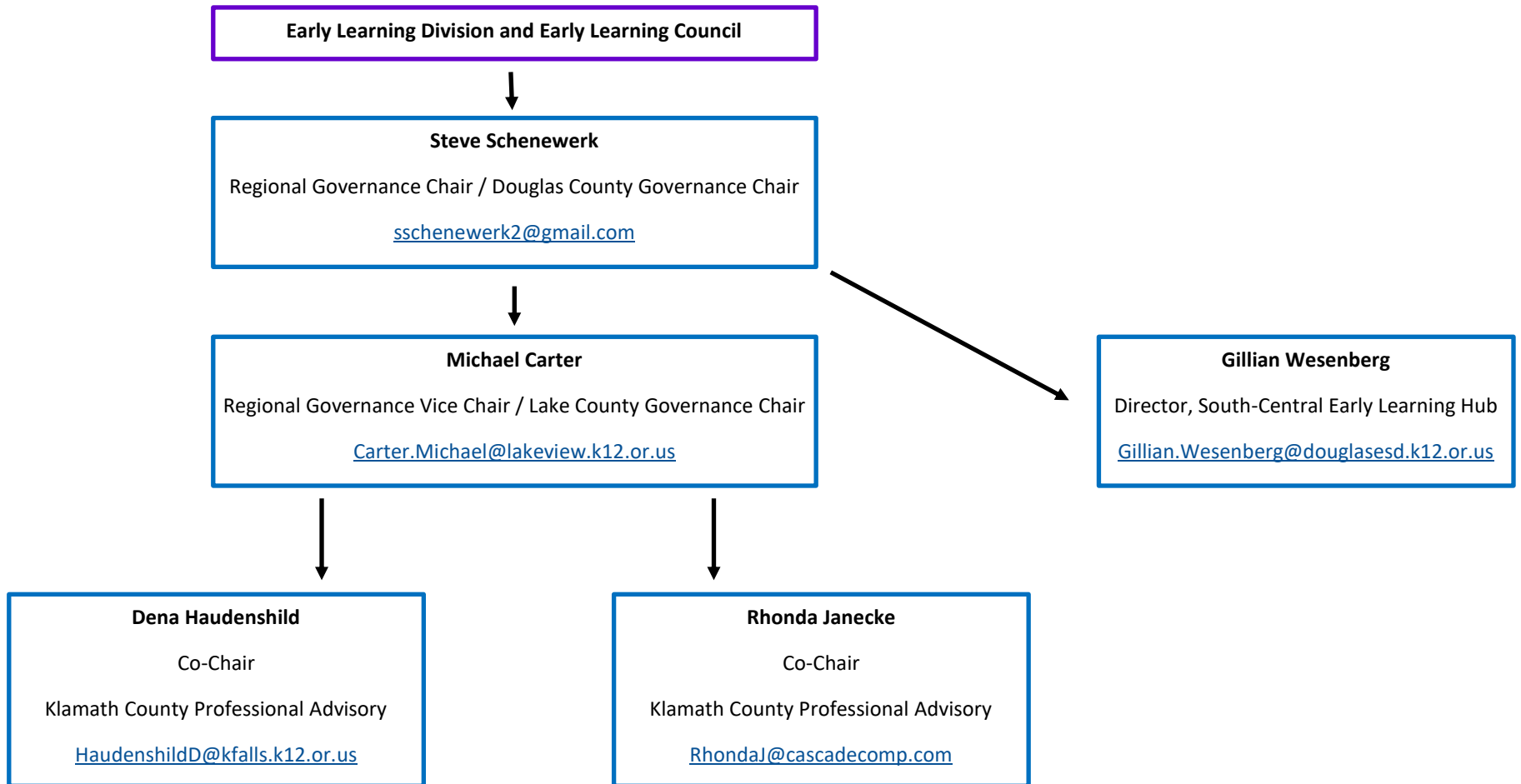
Oregon's cross-sector strategic plan. Being revised to create Raise Up Oregon 2.0

Coordinated Enrollment

The process of the Hub collecting Preschool Promise applications, reviewing applications, qualifying students, and placing them within Preschool Promise classrooms

South-Central Early Learning Hub Regional Governance Council

Organizational Chart



- For questions related to Douglas County and Regional Hub activities and policies, contact Steve Schenewerk
- For questions related to Klamath County Hub activities, contact Dena or Rhonda
- For questions related to Lake County Hub activities, contact Michael Carter
- For questions regarding Preschool Promise or general Hub questions, contact Gillian Wesenberg