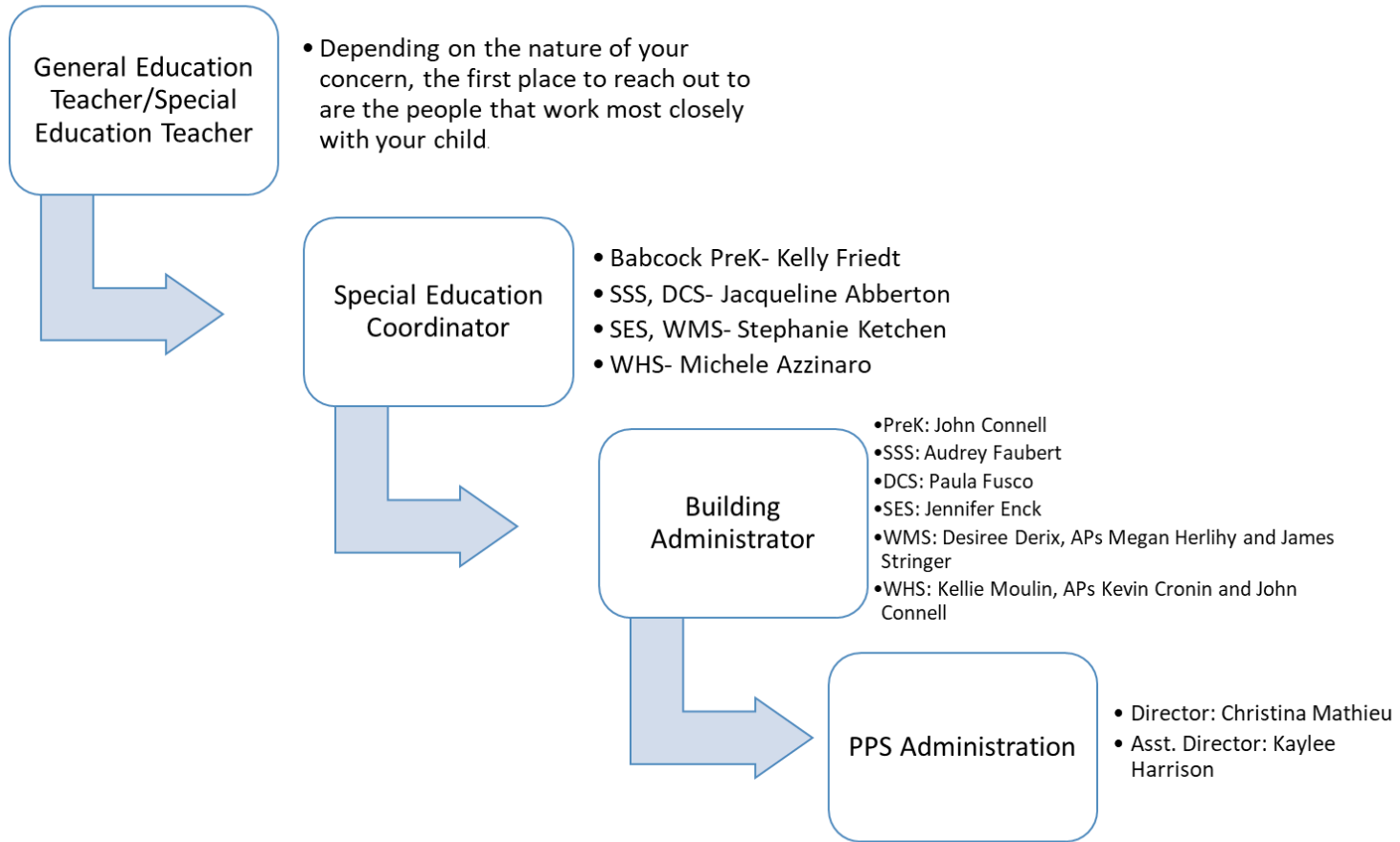


## Do you have a question or concern related to your child's IEP?



### Contact information:

Westerly High School Babcock PreK	Westerly Middle School	State Street School	Springbrook School	Dunn's Corners School
401-315-1501	401-315-1601	401-348-2340	401-348-2296	401-348-2320
(prek)Kelly Friedt: kfriedt@westerly.k12.ri.us(WHS) Michele Azzinaro: mazzinaro@westerly.k12.ri.us Kellie Moulin: kmoulin@westerly.k12.ri.us Kevin Cronin: kcronin@westerly.k12.ri.us John Connell: jconnell@westerly.k12.ri.us	Stephanie Ketchen: sketchen@westerly.k12.ri.us Desiree Derix: dlderix@westerly.k12.ri.us Megan Herlihy: mherlihy@westerly.k12.ri.us James Stringer: jstringer@westerly.k12.ri.us	Jackie Abberton: jabberton@westerlyk12.ri.us Audrey Faubert: afaubert@westerly.k12.ri.us	Stephanie Ketchen: sketchen@westerly.k12.ri.us Jennifer Enck: jenck@westerly.k12.ri.us	Jackie Abberton: jabberton@westerlyk12.ri.us Paula Fusco pfusco@westerly.k12.ri.us