

Class of 2029 Freshman Course Requests



Park Hill High School

Counselors

Ms. Lucas (A – Ce)



Mr. Mesh (L – O)



Ms. Lisi (Ch-Gi)



Ms. Smith (P – Sn)



Ms. Morais (Gj – K)



Ms. Cash (So – Z)



Topics of Discussion



The High School Schedule

Graduation Requirements

Special Programs

Course Offerings

Future Opportunities

Questions

Parallel Schedule

	FIRST TERM	SECOND TERM
1 st	Geometry	Drama
2 nd	Red Days – ELA 1 White Days – Biology	Red Days – ELA 1 White Days – Biology
3 rd	World History	Algebra IB
4 th	Spanish I	Foundations of Fitness

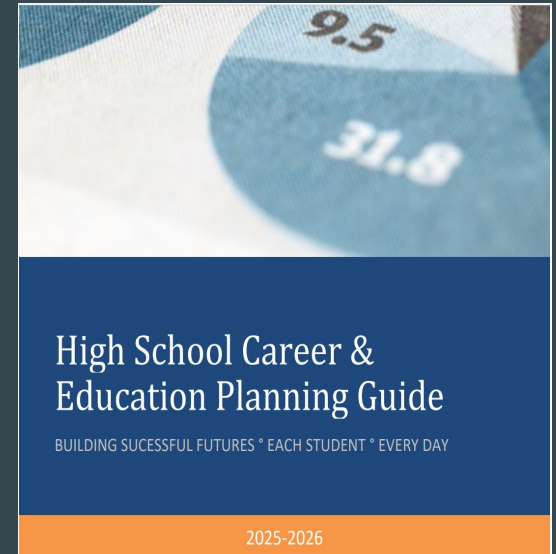
High School Schedule

- Daily Schedule
 - 1st block 8:10 - 9:35
 - 2nd block 9:40 - 11:05
 - Announcements 11:05 - 11:10
 - Homeroom 11:15 - 11:50
 - 3rd block 11:55 - 1:45
 - 4th block 1:50 - 3:15

Career and Educational Planning Guide (CEPG)

Access the planning guide through the Park Hill High School website or use this link:

High School Career and Education Planning Guide



AVID- p.9 in CEPG

- ▶ **Advancement Via Individual Determination**
- ▶ Counts as an elective course worth 1.0 credit.
- ▶ Prepares students for college readiness and success.
- ▶ More information will be coming soon about the application/selection process.

A+ Scholarship Program - p.10

- Signed A+ Letter of Intent
- Grade Point Average – 2.5 over 4 years
- 95% attendance average over 4 years
- 50 hours tutoring/mentoring over 4 years
- Score Proficient or Advanced on the Algebra I EOC exam
- Good Citizenship outlined in the Park Hill School District Policy JG in Student/Parent handbook
- Two Years of Consecutive Attendance at a Missouri A+ High School ending with graduation
- Some 4-year colleges and universities offer scholarships for A+ completion
- **Examples:**
 - Park University - \$5000/year
 - Truman State - \$500/year
 - Northwest Missouri State - \$1,500/year
 - Missouri Western - \$500/year

Questions???

Mrs. Reys – A+ Coordinator

A+ office outside upper gym

816-359-6734

reyse@parkhill.k12.mo.us

Schedule Changes – p. 16

- ▶ A student's schedule will be changed for the following reasons:
 1. Computer Error
 2. Prerequisite not met
 3. Duplicate Credit
 4. To increase the level of rigor

IMPORTANT –

Be sure the classes you choose are truly the classes you want to take.

Graduation Requirements – p. 15

	Credits Required
Language Arts	4
Social Studies	3
Science	3 (Bio and Chemistry required)
Math	3 (Algebra II required)
PE	1
Fine Arts	1
Practical Arts	1
Health	.5
Personal Finance	.5
Electives	11
TOTAL	28

English Language Arts – p. 21

- ▶ All 9th grade students enroll in English Language Arts 1 (ELA 1)
- ▶ Some students may also be required to take English Language Arts Essentials. Please check your recommendation sheet to see if you qualify to take this course in addition to ELA1.

1. ENGLISH LANGUAGE ARTS (p. 21)

*All freshmen take ELA 1. Some freshmen also take ELA Essentials.
Please see your counselor if you have questions.*

English Language Arts 1

English Language Arts Essentials

Math – p. 34

- All 9th grade students are required to take 2 math classes (one each semester).
- Minimum requirements = all students must take through Algebra II or Algebra IIA/IIB to meet the minimum graduation requirement
- Your counselor has indicated which classes you should sign up for on your Freshman Course Recommendation Form.

Regular Math Sequence

- ▶ Pre-Algebra and Algebra IA
- ▶ Algebra IA and Geometry
- ▶ Geometry and Algebra IB

Accelerated Math Sequence

- ▶ Accelerated Geometry and Accelerated Algebra II

Math continued

2. **MATHEMATICS** (p. 34)

All freshmen take two math courses. Please choose your first semester math course below:

Pre-Algebra

Algebra IA

Geometry

Accelerated Geometry

Please choose your second semester math course below:

Algebra IA

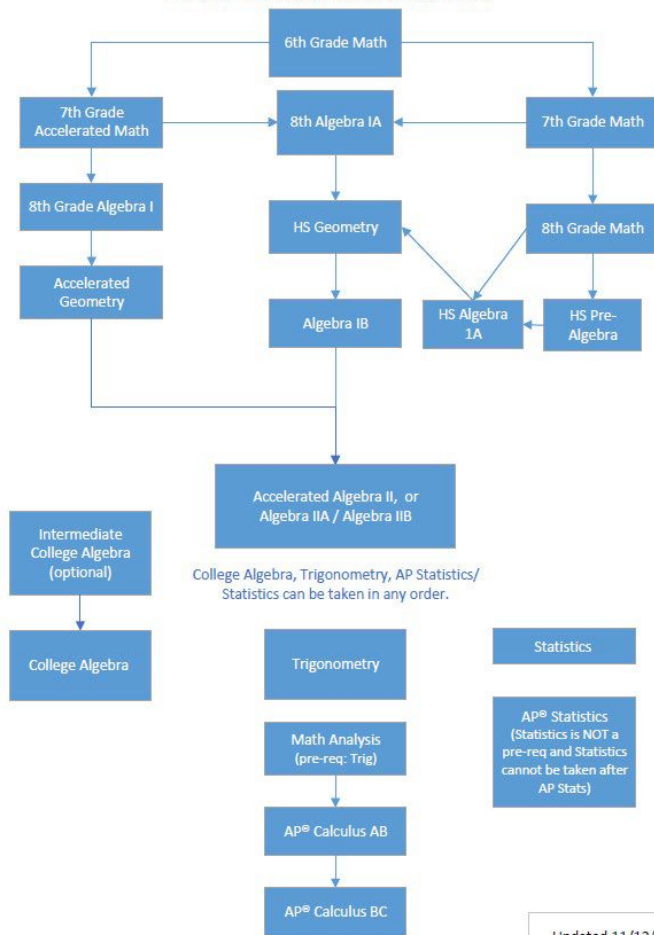
Geometry

Algebra IB

Accelerated Algebra II

Math Flow Chart

Park Hill 6-12 Math Course Flow Chart



Science- p. 44

- All 9th grade students enroll in Biology

Social Studies - p. 46

- 9th grade students may enroll in World History and/or AP Human Geography
- World History or AP World History is required for graduation.
- World History or AP World History is a prerequisite for American History or AP US History which is a graduation requirement for Juniors.

Please note that AP World History is not available to 9th grade students.

Dual Credit – p. 6

- College credit through Metropolitan Community College
-
- Dual Credit Requirements:
 - Meet prerequisite for any course
 - Students in the 10th grade must have an overall minimum GPA of a 3.0 (unweighted).
 - Qualifying ACT or Accuplacer score
 -
- Students will receive dual credit information from the course teacher.
- List of *tentative* courses in pg. 7-8 of planning guide

Advanced Placement (AP) – P. 6

- ▶ Rigorous college-level curriculum
- ▶ Widely accepted: Earn potential college credits or advanced placement depending on AP Exam Score
- ▶ Scores: 1-5 (need a 3 or higher) to “pass”
 - ▶ Depends on each college’s passing score
- ▶ Extra GPA points

Fine Arts – p. 27

- Art

- *Design and Drawing*
 - Intro art class
- *Art History*
 - Art history in wide variety of contexts, study of art, not creation of art.

- Music

- *Music Appreciation*
 - Non-performance class that explore a variety of music styles.
- *Bass Clef or Treble Clef Choir*
- *Campus Band*
- *Concert Orchestra*

- Theatre

- *Drama*
 - Introduction to the theater. Will become acquainted with the history of theater and various significant plays.
- *Tournament Forensics*
 - This is a competitive acting class.

Physical Education- p. 38

- Students must pass 1.0 credit of PE for graduation
- Must take Foundations of Fitness, Weight Training and Conditioning or Walking for Fitness before any other PE course.
- Option of Summer School for Foundations of Fitness (virtual) OR Walking for Fitness (virtual).
 - Please note that these courses are not offered during the school year at PHHS.

Practical Arts

- **Business/Technology** (pg.18)
 - Introduction to Business
- **English/Language Arts** (pg. 23)
 - Broadcast Journalism
 - 21st Century Journalism
 - Photojournalism
 - Debate (not a practical art)
- **Engineering** (pg. 20)
 - Introduction to Engineering Design (PLTW)
 - Use 3D modeling software and use a problem-solving model to improve existing products and invent new ones.
- **Math** (pg. 37)
 - PLTW Computer Science Essentials
 - PLTW/AP Computer Science Principles

Practical Arts

- **Family & Consumer Science** (pg. 26)
 - Fashion and Apparel I
 - Housing and Interior Environment
 - Nutrition and Foods
- ▶ **Industrial Technology** (pg. 33)
 - Home Maintenance

Health and Family Education/Personal Finance

- Health and Family Education (1 quarter for .5 credit)
- Personal Finance (1 quarter for .5 credit)



- These two courses combine for one of your 8 course choices because they are both $\frac{1}{2}$ credits.

World Language – p. 31

- German I and German II
- Spanish I and Spanish II
- Not required for high school graduation
- Minimum of two credits of the same language are required for many college admissions
- Dual Credit Opportunities for the 3rd, 4th and AP levels.

Before you turn in your form, be sure to:

- ▶ Circle 8 courses.

All students choose:

English Language Arts 1

2 Math classes

Biology

- ▶ Select **2 alternate** courses in the gray box
 - ▶ You may end up with these courses.
 - ▶ Choose something you want.

- ▶ Parent/Guardian signature required

ALTERNATE COURSE

Select **two** alternate course requests from the courses listed below. Students will be scheduled into their alternative course if their primary course requests cannot be fulfilled.

21 st Century Journalism	Intermediate Drawing
Art History	Introduction to Business
Bass Clef Choir	Mixed Media
Broadcast Journalism	Music Appreciation
Ceramics & Sculpture	Nutrition & Foods
Debate	Painting
Design and Draw	Photojournalism
Drama	PLTW Computer Sci. Essentials
Fashion & Apparel I	PLTW Intro to Engineering Design
Foundations of Fitness	PLTW/AP Computer Sci. Principles
German I	Spanish I
German II	Spanish II
Graphic Design	Tournament Forensics
Health / Personal Finance	Treble Clef Choir
Home Maintenance	Weight Training/Conditioning
Housing & Interior Env.	

REQUIRED SIGNATURES

Students and their parents/guardians should carefully consider course selections. Course requests provide input for creating the master schedule and determining teacher assignments. Please see the High School Career and Education Planning Guide, page 16, for rules regarding schedule changes. The Career and Education Planning Guide is available on the District website at www.parkhill.k12.mo.us.

STUDENT SIGNATURE: _____ DATE: _____

PARENT/GUARDIAN SIGNATURE: _____ DATE: _____

DUE DATE!!!!

- Completed Enrollment Sheets are due to the counseling office by February 3, 2025 at Congress
- February 5, 2025 at Plaza

Summer School 2025

Wanting to sign up for a summer school course? Click the link below to sign up.

Summer School Registration

Rising 9th graders can sign up for:

- Design and Draw (virtual or in-person)
- Foundations of Fitness (virtual)
- Walking for Fitness (virtual)
- Introduction to Business
- Nutrition and Foods