

BSME Educational Consultancy Directory

BSME Partner Directory

BSME facilitates an invaluable relationship between our schools and over 90 Partners, who provide products and services to schools and staff.

Schools in need of Educational Consultancy can use this brochure to browse trusted BSME Partners. To have a look at our other Partner categories, please visit our [website](#).

Educational Consultancy



Ann Marie Christian

annmariechristian.com | [LinkedIn](#)

Ann Marie is a child protection social worker, qualified in 1996, and has excelled in social work management since 2002. She has worked in several local authority roles, including children's services, based in a secondary school, early years, school improvement team, Local Authority Designated Officer, and youth justice.

In 2008, she was headhunted to deliver child protection training in the UAE and has worked internationally ever since. In 2016, she became a CIS-affiliated safeguarding consultant. In this role, she supports international schools with safeguarding consultancy and training pre- and post-inspection and has worked across various locations globally, including North & Central America, UAE, Europe, Africa, and Southeast Asia. In 2020, she became a BSME safeguarding trainer and consultant and contributed to an online conference, and is still delivering the online accredited Designated Safeguarding Lead training.

She has supported international government departments, universities, and UK-based schools in strengthening safeguarding policy, procedures, and practice by consulting and training stakeholders. She contributed to a post-graduate safeguarding qualification and developed school social work practices at two universities in the UAE. Ann Marie has delivered workshops and keynotes at various international safeguarding conferences including the Caribbean, Southeast Asia, the UK, and the USA. Ann Marie's online safeguarding courses have not just been successful, they have been a hit. Her courses, designed for the Educare part of TES and the Key for Leaders, have been well-received. She created a bespoke international course with Educare, 'The role of the DSL' in international schools.

Ann Marie is not just a professional; she is an international Guru in safeguarding. Her work has not only been successful but has also earned her a reputation for outstanding knowledge and expertise. This recognition has made her a trusted figure in the industry.



ILM Education Consultants

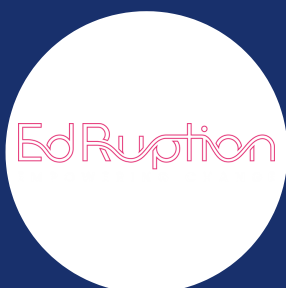
www.ilmeducationconsultants.com | ceo@ilmeducationconsultants.com

ILM Education Consultants and ILM-Connect are at the forefront of enhancing school performance and advancing educational leadership worldwide. We offer a suite of accredited qualifications and bespoke training sessions that are crucial for educational advancement. Under the expert guidance of Iram Myford, a globally acclaimed educational consultant, we specialise in driving substantial improvements in teaching and learning. Our services extend to supporting schools with accreditation processes and preparation for educational inspections, ensuring they meet international standards of excellence.

ILM-Connect, our dynamic platform, connects educators from various regions, facilitating rich exchanges of knowledge and best practices. Members gain exclusive access to professional development workshops, effective networking opportunities, and an extensive collection of resources designed to nurture significant educational growth. We are dedicated to empowering educators and leaders through innovative, research-backed educational strategies that prepare schools to thrive in an evolving educational environment.

BSME Educational Consultancy Directory

Educational Consultancy



EdRuption

www.edruption.com | LinkedIn

EdRuption is committed to bridging the digital divide in schools worldwide by empowering educational institutions with the resources, expertise, and innovative solutions needed to create digitally inclusive learning environments. Guided by our four pillars—Digital Governance, Digital Safeguarding, Digital Curriculum & Teaching, and Innovation—EdRuption ensures a holistic approach to digital transformation in education.

Our team of Apple Distinguished Educators, Google Certified Educators, and other EdTech experts leads digital initiatives that span from STEAM education to curriculum-wide integration across diverse educational systems. We provide tailored support, including bespoke solutions, curriculum alignment, comprehensive digital audits, and full-scale digital strategy implementation.

At EdRuption, we ensure that every project aligns with cutting-edge practices, giving every child, regardless of background, access to high-quality, technology-enhanced education. Our Digital Governance and Safeguarding pillars focus on establishing secure, compliant environments, while Curriculum & Teaching and Innovation empower schools to deliver impactful, future-ready education. Dedicated to long-term impact, EdRuption collaborates with schools to build sustainable digital ecosystems, selecting the most suitable technology for each unique context. Recognizing the importance of family and community involvement, we extend our efforts beyond classrooms, delivering training and support for parents to foster digital literacy at home.

Through our commitment to equity and innovation, EdRuption envisions a future where both schools and communities thrive in a connected, technology-driven world.



RS Academics Ltd

www.rsacademics.co.uk | LinkedIn

RS Academics has advised and supported well over 1000 different schools around the world since it was founded in 2002.

Our team of 75 world-class consultants, researchers and administrators work thoughtfully and collaboratively with Principals and Heads, leadership teams, boards of governors and school owners to help their schools to thrive. We recruit outstanding leaders, provide them with advice and research to help their schools improve and address challenges and we also facilitate and promote good governance, whatever a school's ownership and governance model, through iGNIS – the Governance Network for International Schools.

Our approach is congenially collaborative, never generic, always expert and rigorous.



Constellation Group Consultancy and Management

www.constellationgroup.co.uk | LinkedIn

At Constellation Group we consolidate a range of high quality education services to enable young people to have the best global educational opportunities.

We provide schools, universities, students, families and businesses a single point of contact for a full range of education-related services.

Our team of specialist, professional and trusted experts offers a broad spectrum of consultancy and services, helping our clients achieve education goals and realise focused projects.

BSME Educational Consultancy Directory

Educational Consultancy



CPI

crisisprevention.com | contactus@crisisprevention.com

Not just, a Training Provider. A Behaviour Support Partner.

CPI's 360° Behaviour Training Programme Suite empowers your school to create a supportive and positive climate for both students and staff.

As global leaders in behaviour training, we provide solutions for every level of risk, designed to meet the unique challenges faced by schools around the world.

Our programmes are rooted in a deep commitment to empathy, compassion and meaningful connections, reflecting our belief that personal safety and security are the antidotes to fear and anxiety.

CPI's culturally responsive approach enables every member of your school community to nurture well-being, prevent disruption and effectively handle challenging situations.

Our evidence-based techniques not only improve outcomes for children and young people, but also create a cohesive, nurturing school environment.

From initial training to ongoing support, CPI stands by your side to ensure your team is equipped and confident, no matter where in the world your school is located.

Together, we'll build a safer educational culture that champions the Care, Welfare, Safety, and SecuritySM for everyone involved.



Vamos for Schools Ltd

www.vamosforschools.co.uk | russell.collins@vamoslanguageteaching.co.uk

Schools who require the necessary resources to provide Spanish can leverage the expertise of Vamos.

We have formed an exciting partnership with Learning Resource Network (LRN) to introduce their International GCSE Spanish programme.

As an authorised LRN Delivery Centre, this allows us to support schools that may lack Spanish teachers or resources to provide Spanish qualifications.

Our Spanish courses from KS2 to A level are offered during school time or as an extracurricular enrichment and only require Chromebooks or PCs and one responsible adult.



ZeroGram Limited

www.zeroграм.co | LinkedIn

'With a large network of specialists, ZeroGram can help schools reduce energy costs with affordable energy solutions. ZeroGram measures success based on levels of carbon emission savings identified and abated for schools. Our purpose is to help every school achieve its net zero ambitions, through appropriate resourcing and technical expertise.'

BSME Educational Consultancy Directory

Educational Consultancy



Being Luminary

www.beingluminary.co.uk | hello@beingluminary.co.uk

Empowering Leaders to Build Inclusive Organisations Where Everyone Belongs

Being Luminary is a Boutique Diversity, Equity, and Inclusion Consultancy led by Angela Browne. We partner with leaders who bring humility, commitment, and curiosity to help them create exceptional organisations that foster a sense of belonging and safety for all. Through our listening, deepening, and enacting process, we equip leaders with the knowledge, skills, and strategies to drive meaningful change and embrace luminary leadership in the realm of DEI.

Our journey began with a deep-rooted desire to impact the world positively. We recognised the need for organisations to prioritise diversity, equity, and inclusion as a high priority, especially in today's rapidly changing and interconnected society. We saw the potential for organisations to become safe harbours for everyone - staff, students, and the wider community.

We are dedicated to supporting our clients in building exceptional organisations where diversity is celebrated, equity is championed, and inclusion is embedded in every aspect of their culture and practices.

We approach our work with humility, commitment, and curiosity. We understand that creating meaningful change requires a deep understanding of the complex dynamics at play within organisations. Our high-touch programs, online courses, and organisational consultancy are designed to provide a comprehensive and tailored approach to DEI, addressing both individual and systemic barriers.

Our core values of wisdom, beauty, and excellence drive us. Wisdom guides our approach as we draw upon our knowledge and experience to deliver impactful solutions. Beauty inspires us to create aesthetically pleasing and engaging experiences that captivate and motivate our clients. Excellence is our commitment to providing the highest quality services, ensuring that our clients receive the support they need to navigate the challenges of building inclusive organisations.

The Safeguarding Alliance

www.thesafeguardingalliance.org.uk | rebecca@thesafeguardingalliance.org

The Safeguarding Alliance are the only safeguarding specialist company based in the MENA region.

A MULTI-SKILLED ALLIANCE:

The safeguarding risks and issues are changing all the time, so there are no safeguarding experts. Instead, there are specialists who have a singular focus on safeguarding, bringing a unique set of skills and understanding to every organisation and situation. That is how we operate at The Safeguarding Alliance. We bring together a range of professionals from a diverse range of sectors, all of whom are passionate about safeguarding and have many years of experience in the field. We work with some of the world's most high-profile organisations and are internationally renowned for our work helping to shape safeguarding practice.

AN INTERNATIONAL APPROACH:

Our Alliance consists of organisations from around the world who share a mutual passion and drive to put an end to safeguarding failings. We work with governments and organisations across the world, and act on an international level to encourage global standards and practices. We research, develop and promote policy and deliver education and training, all with the aim of driving forward safeguarding excellence.

Safeguarding will only work, if we work together.



BSME Educational Consultancy Directory

Educational Consultancy



AGBIS International

www.agbis.org.uk | [LinkedIn](#)

Based on over 80 years' expertise in British independent schools, AGBIS is the 'go to' professional body for all matters concerning independent school governance. Having supported schools with many different shapes of governance, through reviews, strategic planning, training, conflict resolution and on-going support as part of a community of schools in the UK, AGBIS International now offers schools across the globe the benefit of that professional knowledge, experience and confidence. Current international members are in Europe, Africa, Middle East, Asia and South America.

Member benefits include: advice helpline for Clerks, Heads or Chairs/Governors, access to our 'Member Resources' page with important documents and helpful resources, including job descriptions, model contracts and advice to help with your role, webinars, recordings, podcasts, and resources (Many webinars are included in your membership, others for a fee), 'Coffee and Catch-up' sessions for Clerks and Chairs, in-person seminars (for a fee), conferences (for a fee) regular newsletters, an e-alert service and upcoming events. In addition, bespoke services available: reviews of governance, strategy facilitation days, bespoke on-site training, e-learning courses, regular training for new governors, sub-committee excellence training, and more.

If you have any questions, please email Alex Mitchell, Head of AGBIS International and Consultancy, at international@agbis.org.uk.



Keystone Tutors

www.keystonetutors.com | [LinkedIn](#)

Keystone Elective is a cost-effective, quick and flexible offering to help schools cover any curriculum gaps using high quality tutors. Our model allows schools to offer an attractive and diverse range of learning opportunities, year after year, with no anxiety over the economic viability. We offer a full range of either full or part-time support in GCSE and A Level subjects, Oxbridge and University preparation, SEN and EAL support as well as extra-curricular and extension classes. Within our offering we can manage attendance, assessment, and reporting - tailored to your house style and systems.

Our tutors are a group of passionate former teachers and professionals who have helped over 10,000 students since Keystone's inception in 2007. We have offices in London, Hong Kong and Singapore and have an exceptional reputation for helping students achieve their best. As a school or organisation, you tell us your needs and we will work to find a teacher that fits your specifications and budget. Our delivery is fully remote and we can work for all time zones and requirements.



Study Options

www.studyoptions.com | [LinkedIn](#)

We are a free, independent, expert service for students and have been helping people study in Australia and New Zealand for over 15 years. Hundreds of students apply through Study Options every year.

We offer advice and counselling to help you choose the right course, at the right university, and are then responsible for guiding you through the entire application process, from making an application to accepting an offer of place. We also provide free assistance with practicalities including student accommodation and student visas.

Study Options is the official representative of Australian and New Zealand universities in the UK, and aims to ensure that the application process is as straightforward and stress-free as possible for you. Study Options is the only organisation in the UK that focuses exclusively on Australian and New Zealand education.

Study Options has offices in Bristol and London, UK, and is represented in the UAE by John Milne.