

Nueva's financial assistance goes beyond tuition.

We ensure every Nueva student can take part in the full Nueva experience.

Nueva provides consistent support from enrollment to matriculation. Assistance toward tuition and wraparound services remains in place throughout a student's time at Nueva, assuming a family's financial circumstances remain consistent.

The percentage of tuition that Nueva covers for your family is **Your FA%**. Some families receive 100% assistance, meaning that they pay nothing toward a Nueva education.

Nueva *also* covers the cost of additional programs and services at the same percentage as **Your FA%***

We call these "wraparound services" because they support your child and your family from every angle while they are at Nueva!

Essential Services



Lunch (PreK-4th)
(*Lunch in 5th-12th is included in tuition)



Transportation



Extended Day (K-8th)
(before care and after care)

Enrichment Opportunities



Athletic Teams
(Gear and travel to competitions are included in tuition)

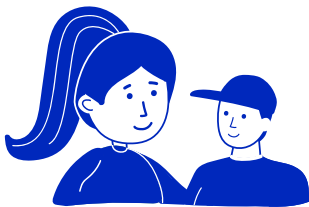


Overnight trips



Opt-in electives, enrichment, and activities
(and associated travel and competition)

Academic and Personal Support



Learning support and counseling by Nueva staff, if needed, is included in tuition



Learning support/tutoring
(including summer)

Outside Support
when required by Nueva
(evaluation and/or sessions)

Occupational therapy
Speech therapy



Nueva Summer Camp (1st-12th)
(including the summer before enrollment)



Menuhin Music Program



Private music lessons at Nueva

Miscellaneous Services



Spending money for Nueva's annual book fair



Senior prom and senior yearbook pages



Paid internships
if Your FA is 50% or more
(requires application)



Spending money for curricular overnight trips
if Your FA is 50% or more



Standardized tests taken at Nueva



College application fees

Did you know?

Families with an annual income under \$150,000 receive 100% financial assistance.

THE
NUEVA
SCHOOL



www.nuevaschool.org/FA

*unless otherwise noted