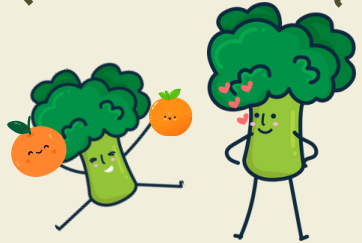


# High School Menu

# February 2025

Farm to School



ITEMS OF THE MONTH:

**CARA CARA ORANGES, FRESH BROCCOLI, & ORGANIC TANGERINES**

Key



House-Made



Vegetarian Entrees



Vegan Entrees

All fruits, fresh vegetables, & cereals are vegan.



Contains Pork



All grains are whole-grain rich  
Except cinnamon roll



New Item

\*MENUS ARE SUBJECT TO CHANGE WITHOUT NOTICE.



Scan QR code for more menu information.



MON	TUE	WED	THU	FRI
<b>BREAKFAST</b> 3 Egg, Cheese, & Sausage Croissant Sandwich Breakfast Bar	<b>BREAKFAST</b> 4 Cinnamon Crumb Cake Egg, Cheese, & Turkey Sausage Breakfast Burrito	<b>BREAKFAST</b> 5 Chicken Biscuit Sandwich Cinnamon Waffle Egg & Cheese Bites	<b>BREAKFAST</b> 6 Muffin Pizza Bagel	<b>BREAKFAST</b> 7 French Toast w/Fruit Dip Egg, Cheese, & Turkey Ham Croissant Sandwich Marshmallow Cereal Bar
<b>LUNCH</b> Breaded Ravioli w/Marinara Boneless Wings w/Cornbread Cheeseburger/Hamburger Buffalo BBQ Chicken Sliders	<b>LUNCH</b> Macaroni & Cheese Corn Dog Spicy Chicken Sandwich Thai Sweet Chili Chicken w/Rice <i>Farm to School Cara Cara Oranges</i>	<b>LUNCH</b> Pancakes & Sausage Chili Cheese Nachos Chickpea Butter & Jelly (CB&J) Sandwich Chicken & Veggie Chow Mein	<b>LUNCH</b> Chicken & Mashed Potato Bowl Chicken & Cheese Taquitos w/Guacamole Strawberry Yogurt Parfait Spicy Chicken Sandwich	<b>LUNCH</b> Chili Cheese Nachos PB&J Sandwich Bacon Chicken Ranch Wrap Buffalo BBQ Chicken Sandwich
<b>10</b>  Lincoln Day - No School	<b>11</b> <b>BREAKFAST</b> Cinnamon Crumb Cake Breakfast Bites	<b>12</b> <b>BREAKFAST</b> Egg, Cheese, & Sausage Croissant Sandwich Mini Maple Pancakes	<b>13</b> <b>BREAKFAST</b> Cinnamon Crumb Cake Egg & Cheese Biscuit Cinnamon Cereal Bar	<b>14</b> <b>BREAKFAST</b> Beef & Bean Burrito w/Pico Pan Dulce Concha Smoothie Bowl Strawberry Yogurt Parfait
<b>17</b>  Washington Day - No School	<b>18</b> <b>BREAKFAST</b> Cinnamon Crumb Cake Bagel w/Cream Cheese	<b>19</b> <b>BREAKFAST</b> Chicken Biscuit Sandwich Blueberry Waffle Egg & Cheese Bites	<b>20</b> <b>BREAKFAST</b> Muffin Egg, Cheese, & Turkey Sausage Breakfast Burrito Strawberry Yogurt Parfait	<b>21</b> <b>BREAKFAST</b> French Toast w/Fruit Dip Egg, Cheese, & Turkey Ham Croissant Sandwich Marshmallow Cereal Bar Strawberry Yogurt Parfait
<b>24</b> <b>BREAKFAST</b> Breakfast Bites Pizza Stick	<b>25</b> <b>BREAKFAST</b> Cinnamon Crumb Cake PB&J Sandwich	<b>26</b> <b>BREAKFAST</b> Egg, Cheese, & Sausage Croissant Sandwich Mini Maple Pancakes Cinnamon Cereal Bar Strawberry Yogurt Parfait	<b>27</b> <b>BREAKFAST</b> Cinnamon Crumb Cake Bacon, Egg & Cheese Biscuit Sandwich Strawberry Yogurt Parfait	<b>28</b> <b>BREAKFAST</b> Beef & Bean Burrito w/Pico Pan Dulce Concha Smoothie Bowl Strawberry Yogurt Parfait
<b>LUNCH</b> Quesadilla Orange Chicken w/Rice Bean & Cheese Burrito w/Pico Meatball Sub Sandwich	<b>LUNCH</b> Spicy Chicken Sandwich BBQ Turkey Sliders PB&J Protein Kit Beef Tacos	<b>LUNCH</b> Pancakes & Sausage Chili Cheese Nachos Bean Burrito Chicken & Veggie Chow Mein	<b>LUNCH</b> Chicken Pozole Chicken & Cheese Taquitos w/Guacamole Peach Yogurt Parfait Spicy Chicken Sandwich <i>Farm to School Organic Tangerines</i>	<b>LUNCH</b> Chili Cheese Nachos PB&J Sandwich Spaghetti w/Meatballs Buffalo BBQ Chicken Sandwich

## OFFERED DAILY

**BREAKFAST:**

- Fruit
- House-Baked Cinnamon Rolls
- Whole Grain Cereals w/String Cheese
- Yogurt with Granola
- 100% Fruit Juice
- Low-Fat White Milk
- Nonfat Chocolate Milk

## OFFERED DAILY

**LUNCH:**

- Fruits & Vegetables
- Pizza
- Salads
- Sandwiches
- Yogurt with Granola
- 100% Fruit Juice
- Low-Fat White Milk
- Nonfat Chocolate Milk

## SPECIAL EVENTS

- February 3: National Tater Tot Day
- February 7: National Pizza Day
- February 11: National Make a Friend Day
- February 14: Valentine's Day
- February 24: National Sweet Potato Day
- February 28: National Chili Day

## SPECIAL ITEM

Only available on 2/14  
Strawberry Milk

