



Bulletin

Date January 13, 2025
Project Name Troy School District – New Smith Middle School
TMP Project No(s). 22102
Bid Package No. 03
Bulletin No. Seven (7)

This Bulletin, issued after the award of contracts, describes a proposed deviation from the contract documents for the above project(s). All work shall conform with the standards and intent of the contract documents. Each contractor whose work is affected shall submit, within (14) days, an itemized proposal for performing this work. This Bulletin IS NOT an authorization for making a change.

The following Drawing(s) and Attachment(s) are issued with this Bulletin:

Drawing No(s): AD.S, AD.S2, A2.1E, A2.1F, A2.2E, A3.2, A7.2, A7.6, A9.1A, A9.1B, A9.1C, A9.1D, A9.1E, A9.1F, A9.2C, A9.2D, A9.2E
Attachment(s): Specification Section(s): 10 1416, 10 1419, 10 1423, 10 1426, 10 1500

Item No.	Specification Changes
SC-1	Refer to Section No. 10 1416 – PLAQUES (reissued): A. Reissue section complete for bidding.
SC-2	Refer to Section No. 10 1419 – DIMENSIONAL LETTER AND SIGNAGE (reissued): A. Reissue section complete for bidding.
SC-3	Refer to Section No. 10 1423 – PANEL SIGNAGE (reissued): A. Reissue section complete for bidding.
SC-4	Refer to Section No. 10 1426 – EXTERIOR SIGNAGE (reissued): A. Reissue section complete for bidding.
SC-5	Refer to Section No. 10 1500 – VIDEO DISPLAY SYSTEMS (reissued): A. Reissue section complete for bidding.

January 13, 2025
Troy School District – New Smith Middle School
TMP Project No. 22102
Bid Package No. 03
Bulletin No. Seven (7)

Page 2 of 3

Item No.	Architectural Drawing Changes
AD-1	Refer to Drawing No. AD.S (reissued): A. Reissue sheet complete for bidding.
AD-2	Refer to Drawing No. AD.S2 (reissued): A. Reissue sheet complete for bidding.
AD-3	Refer to Drawing No. A2.1E (reissued): A. Reissue sheet complete for bidding.
AD-4	Refer to Drawing No. A2.1F (reissued): A. Reissue sheet complete for bidding.
AD-5	Refer to Drawing No. A2.2E (reissued): A. Reissue sheet complete for bidding.
AD-6	Refer to Drawing No. A3.2 (reissued): A. Reissue sheet complete for bidding.
AD-7	Refer to Drawing No. A7.2 (reissued): A. Reissue sheet complete for bidding.
AD-8	Refer to Drawing No. A7.6 (reissued): A. Reissue sheet complete for bidding.
AD-9	Refer to Drawing No. A9.1A (reissued): A. Reissue sheet complete for bidding.
AD-10	Refer to Drawing No. A9.1B (reissued): A. Reissue sheet complete for bidding.
AD-11	Refer to Drawing No. A9.1C (reissued): A. Reissue sheet complete for bidding.

January 13, 2025
Troy School District – New Smith Middle School
TMP Project No. 22102
Bid Package No. 03
Bulletin No. Seven (7)

Page 3 of 3

- AD-12 Refer to Drawing No. A9.1D (reissued):
 - A. Reissue sheet complete for bidding.

- AD-13 Refer to Drawing No. A9.1E (reissued):
 - A. Reissue sheet complete for bidding.

- AD-14 Refer to Drawing No. A9.1F (reissued):
 - A. Reissue sheet complete for bidding.

- AD-15 Refer to Drawing No. A9.2C (reissued):
 - A. Reissue sheet complete for bidding.

- AD-16 Refer to Drawing No. A9.2D (reissued):
 - A. Reissue sheet complete for bidding.

- AD-17 Refer to Drawing No. A9.2E (reissued):
 - A. Reissue sheet complete for bidding.

END OF BULLETIN NO. 7 - BID PACKAGE NO. 03

SECTION 10 1416 – PLAQUES****BUL7******PART 1 GENERAL****1.01 SECTION INCLUDES**

- A. Plaques.

1.02 REFERENCE STANDARDS

- A. 36 CFR 1191 - Americans with Disabilities Act (ADA) Accessibility Guidelines for Buildings and Facilities; Architectural Barriers Act (ABA) Accessibility Guidelines; current edition.
- B. ADA Standards - 2010 ADA Standards for Accessible Design; 2010.
- C. ICC A117.1 - Accessible and Usable Buildings and Facilities; 2017.

1.03 SUBMITTALS

- A. See Section 01 3000 - Administrative Requirements for submittal procedures.
- B. Product Data: Manufacturer's product literature for each type of plaque sign, indicating style, font, foreground and background colors, locations, and overall dimensions of each sign.
- C. Shop Drawings: Indicate dimensions, locations, elevations, materials, text and graphic layout, and attachment details.
- D. Samples: One sample of each type of plaque sign, of size similar to that required for project, indicating style, font, and method of attachment.
- E. Selection Samples: Where materials, colors, and finishes are not specified, submit two sets of color selection charts or chips.
- F. Manufacturer's qualification statement.

1.04 QUALITY ASSURANCE

- A. Manufacturer Qualifications: Company specializing in manufacturing the products specified in this section with minimum five years of documented experience.
- B. Installer Qualifications: Company experienced in installing the products specified in this section with minimum five years documented experience.

1.05 DELIVERY, STORAGE, AND HANDLING

- A. Package plaque signs as required to prevent damage before installation.
- B. Store under cover and elevated above grade.

PART 2 PRODUCTS**2.01 MANUFACTURERS**

- A. Plaques:
 - 1. A.R.K. Ramos: www.arkramos.com/#sle.
 - 2. DMP Sign Co. (Formerly Detroit Marketing Products): www.dmpsignco.com
 - 3. Gemini Inc.: www.geminisignproducts.com.
 - 4. Substitutions: See Section 01 6000 - Product Requirements.

2.02 REGULATORY REQUIREMENTS

- A. Accessibility Requirements: Comply with ADA Standards and ICC A117.1 and applicable building codes, unless otherwise indicated; in the event of conflicting requirements, comply with the most restrictive requirements.

2.03 PLAQUES

- A. Metal Plaques:
 - 1. Material: Aluminum casting.
 - 2. Material Thickness: 1/8 inch, minimum.
 - 3. Size: As indicated on drawings.
 - 4. Text and Typeface:
 - a. Character Font: As indicated on drawings..
 - b. Character Case: Upper case only.

- c. Character Color: Contrast with background color.
- 5. Border Style: Double line.
- 6. Background Texture: Pebble.
- 7. Surface Finish: As selected by Architect from manufacturer's full range.
- 8. Painted Background Color: As selected by Architect from manufacturer's standard background colors.
- 9. Protective Coating: Manufacturer's standard clear coating.
- 10. Mounting: Blind studs.

2.04 ACCESSORIES

- A. Concealed Screws: Noncorroding metal; stainless steel or galvanized steel.

PART 3 EXECUTION**3.01 EXAMINATION**

- A. Verify that substrate surfaces are ready to receive work.
- B. Notify Architect if conditions are not suitable for installation of signs; do not proceed until conditions are satisfactory.

3.02 INSTALLATION

- A. Install in accordance with manufacturer's instructions.
- B. Install with horizontal edges level.
- C. Protect from damage until Date of Substantial Completion; repair or replace damaged items.
- D. Protect from damage until mm-dd-yyyy; repair or replace damaged items.

END OF SECTION

SECTION 10 1419 - DIMENSIONAL LETTER SIGNAGE****BUL7******PART 1 GENERAL****1.01 SECTION INCLUDES**

- A. Dimensional letter signage.
- B. Illumination system.

1.02 REFERENCE STANDARDS

- A. 36 CFR 1191 - Americans with Disabilities Act (ADA) Accessibility Guidelines for Buildings and Facilities; Architectural Barriers Act (ABA) Accessibility Guidelines; current edition.
- B. ADA Standards - 2010 ADA Standards for Accessible Design; 2010.
- C. ICC A117.1 - Accessible and Usable Buildings and Facilities; 2017.
- D. UL 879 - Electric Sign Components; Current Edition, Including All Revisions.

1.03 SUBMITTALS

- A. See Section 01 3000 - Administrative Requirements for submittal procedures.
- B. Product Data: Manufacturer's product literature for each type of dimensional letter sign, indicating style, font, colors, locations, and overall dimensions of each sign.
- C. Shop Drawings:
 - 1. Include dimensions, locations, elevations, materials, text and graphic layout, and attachment details.
- D. Samples: Submit one sample of each type of dimensional letter sign of size similar to that required for project, indicating sign style, font, and method of attachment.
- E. Selection Samples: Where materials, colors, and finishes are not specified, submit two sets of selection charts or chips.
- F. Verification Samples: Submit samples showing colors and finishes specified.
- G. Manufacturer's Installation Instructions: Include installation templates and attachment devices.
- H. Manufacturer's qualification statement.

1.04 QUALITY ASSURANCE

- A. Manufacturer Qualifications: Company specializing in manufacturing the products specified in this section with minimum five years of documented experience.
- B. Installer Qualifications: Company specializing in manufacturing the products specified in this section with minimum five years of documented experience.

1.05 DELIVERY, STORAGE, AND HANDLING

- A. Package dimensional letter signs as required to prevent damage before installation.
- B. Store under cover and elevated above grade.
- C. Store tape adhesive at a normal room temperature of 68 to 72 degrees F.

1.06 FIELD CONDITIONS

- A. Do not install tape adhesive when ambient temperature is lower than recommended by manufacturer.
- B. Maintain minimum ambient temperature during and after installation.

PART 2 PRODUCTS**2.01 MANUFACTURERS**

- A. Dimensional Letter Signs:
 - 1. 3M: www.3m.com
 - 2. A.R.K. Ramos: www.arkramos.com/#sle.
 - 3. DMP Sign Co. (Formerly Detroit Marketing Products): www.dmpsignco.com
 - 4. Gemini Inc.: www.geminisignproducts.com.
 - 5. Inpro Corporation: www.inprocorp.com/#sle.
 - 6. Substitutions: See Section 01 6000 - Product Requirements.

2.02 REGULATORY REQUIREMENTS

- A. Accessibility Requirements: Comply with ADA Standards and ICC A117.1 and applicable building codes, unless otherwise indicated; in the event of conflicting requirements, comply with the most restrictive requirements.

2.03 DIMENSIONAL LETTERS

- A. Applications: Interior.
1. Use individual metal letters.
 2. Mounting Location: Interior as indicated on drawings.
 3. Metal Letters:
 - a. Material: Aluminum casting.
 - b. Thickness: Manufacturer's standard for letter size.
 - c. Letter Height: As indicated on drawings.
 - d. Text and Typeface:
 - 1) Character Font: Helvetica, Arial, or other sans serif font.
 - 2) Character Case: As indicated on drawings..
 - e. Finish: Anodized.
 - f. Color: Up to two custom colors.
 - 1) Color A: To match Sherwin Williams SW 7069 Iron Ore
 - 2) Color B: To match Sherwin Williams SW 6381 Anjou Pear
 - g. Mounting: Concealed screws.
- B. Applications: Building identification and Room Identification at Interior locations.
1. Use individual metal letters.
 2. Mounting Location: Exterior and Interior as indicated on drawings.
 3. Metal Letters:
 - a. Material: Aluminum casting.
 - b. Thickness: Manufacturer's standard for letter size.
 - c. Letter Height: As indicated on drawings.
 - d. Text and Typeface:
 - 1) Character Font: Helvetica, Arial, or other sans serif font.
 - 2) Character Case: As indicated on drawings..
 - e. Finish: Anodized.
 - f. Color: Up to two custom colors.
 - 1) Color A: To match Sherwin Williams SW 7069 Iron Ore
 - 2) Color B: To match Sherwin Williams SW 6381 Anjou Pear
 - g. Mounting: Concealed screws.
 - h. Illumination System: Halo-lit reverse channel letters.
 - 1) Provide products that are listed and labeled as complying with UL 879, where applicable.
 - 2) Power: 120 V, 60 Hz, 1 phase, 15 A.
- C. Applications: Logo.
1. Precision cut metal logo.
 2. Mounting Location: Interior as indicated on drawings.
 3. Metal:
 - a. Material: Cut aluminum..
 - b. Thickness: 1/4 inch minimum.
 - c. Logo Height: As indicated on drawings.
 - d. Finish: Glossy.
 - e. Color: Up to six custom colors.
 - 1) Custom colors to match school logo.
 - f. Mounting: Concealed Screws on Standoffs.
- D. Plastic Letters:
1. Material: Vinyl sheet, flat cutout.
 - a. Opaque, non-reflective film with pressure-sensitive adhesive backing.

- b. Signs shall be cut from sufficiently large rolls of material to minimize seams or joining of material to create one sign.
- 2. Thickness: Manufacturer's standard for letter size.
- 3. Letter Height: As indicated on drawings.
- 4. Text and Typeface:
 - a. Character Font: Helvetica, Arial, or other sans serif font.
 - b. Character Case: As indicated on drawings..
- 5. Finish: As selected by Architect from manufacturer's full range.
- 6. Color: White.
- 7. Mounting: Pressure-sensitive adhesive.
- 8. Installation Method:
 - a. Signs shall be installed free of bubbles, wrinkles, or other anomalies.
 - b. Provide signs as either front applied (first surface) or reverse applied (second surface) as required.

2.04 ACCESSORIES

- A. Concealed Screws: Noncorroding metal; stainless steel, galvanized steel, chrome plated, or other.
- B. Tape Adhesive: Double-sided tape, permanent adhesive.

PART 3 EXECUTION**3.01 EXAMINATION**

- A. Verify that substrate surfaces are ready to receive work.
- B. Verify that electrical service is correctly sized and located to accommodate dimensional letter signs.
- C. Notify Architect if conditions are not suitable for installation of signs; do not proceed until conditions are satisfactory.

3.02 INSTALLATION

- A. Install in accordance with manufacturer's instructions.
- B. Install with horizontal edges level.
- C. Protect from damage until Date of Substantial Completion; repair or replace damaged items.

END OF SECTION

SECTION 10 1423 - PANEL SIGNAGE****BUL7******PART 1 GENERAL****1.01 SECTION INCLUDES**

- A. Panel signage.

1.02 REFERENCE STANDARDS

- A. ADA Standards - 2010 ADA Standards for Accessible Design; 2010.
- B. ICC A117.1 - Accessible and Usable Buildings and Facilities; 2017.

1.03 SUBMITTALS

- A. See Section 01 3000 - Administrative Requirements for submittal procedures.
- B. Product Data: Manufacturer's product literature for each type of panel sign, indicating styles, font, foreground and background colors, locations, and overall dimensions of each sign.
- C. Shop Drawings:
 - 1. Include dimensions, locations, elevations, materials, text and graphic layout, attachment details, and schedules.
 - 2. Schedule: Provide information sufficient to completely define each panel sign for fabrication, including room number, room name, other text to be applied, sign and letter sizes, fonts, and colors.
 - a. When room numbers to appear on signs differ from those on drawings, include the drawing room number on schedule.
 - b. When content of signs is indicated to be determined later, request such information from Owner through Architect at least 2 months prior to start of fabrication; upon request, submit preliminary schedule.
 - c. Submit for approval by Owner through Architect prior to fabrication.
- D. Samples: Submit two samples of each type of sign, of size similar to that required for project, indicating sign style, font, and method of attachment.
- E. Selection Samples: Where colors, materials, and finishes are not specified, submit two sets of color selection charts or chips.
- F. Verification Samples: Submit samples showing colors, materials, and finishes specified.
- G. Manufacturer's Installation Instructions: Include installation templates and attachment devices.
- H. Manufacturer's qualification statement.
- I. Maintenance Materials: Furnish the following for Owner's use in maintenance of project.
 - 1. See Section 01 6000 - Product Requirements for additional provisions.

1.04 QUALITY ASSURANCE

- A. Manufacturer Qualifications: Company specializing in manufacturing the products specified in this section with minimum five years of documented experience.
- B. Manufacturer Qualifications: Company specializing in manufacturing the products specified in this section with minimum five years of documented experience.

1.05 DELIVERY, STORAGE, AND HANDLING

- A. Package signs as required to prevent damage before installation.
- B. Package room and door signs in sequential order of installation, labeled by floor or building.
- C. Store under cover and elevated above grade.
- D. Store tape adhesive at normal room temperature.

1.06 FIELD CONDITIONS

- A. Do not install tape adhesive when ambient temperature is lower than recommended by manufacturer.
- B. Maintain minimum ambient temperature during and after installation.

PART 2 PRODUCTS**2.01 MANUFACTURERS****A. Panel Signage:**

1. ASI Signage Innovation: www.asisignage.com.
2. DMP Sign Co. (Formerly Detroit Marketing Products): www.dmpsignco.com.
3. Foresight Supersign: www.foresightsupersign.net.
4. Inpro Corporation: www.inprocorp.com/#sle.
5. Summit Advertising, Inc.: www.summit-signco.com
6. The Supersine Company: www.supersine.com.
7. Substitutions: See Section 01 6000 - Product Requirements.

2.02 REGULATORY REQUIREMENTS

- A. Accessibility Requirements: Comply with ADA Standards and ICC A117.1 and applicable building codes, unless otherwise indicated; in the event of conflicting requirements, comply with the most restrictive requirements.

2.03 PANEL SIGNAGE**A. Panel Signage:**

1. Application: Room and door signs.
2. Description: Flat signs UV/LED-cured digitally printed ink media, tactile characters and Braille shall be integral to sign face; separate adhesively-fixed characters are not permitted. Frameless.
3. Sign Size: As indicated on drawings.
4. Total Thickness: 1/8 inch.
5. Sign Edges: As indicated.
6. Letter Edges: As indicated.
7. Corners: As indicated.
8. Color and Font, unless otherwise indicated:
 - a. Character Font: Helvetica, Arial, or other sans serif font.
 - b. Character Case: Upper and lower case (title case).
 - c. Background Color: As scheduled.
 - d. Character Color: Contrasting color.
9. Profile: Flat panel without frame.
 - a. Clear Cover: For customer produced sign media, provide clear cover of polycarbonate plastic, glossy on back, nonglare on front.
 - 1) Signage manufacturer to provide template to owner for layout. Insert printed by owner.
10. Tactile Letters: Raised 1/32 inch minimum.
11. Braille: Grade II, ADA-compliant.
12. One-Sided Wall Mounting: Tape adhesive.

2.04 SIGNAGE APPLICATIONS**A. Room and Door Signs:**

1. Classroom and Office Doors: Identify with room names and numbers as indicated on signage schedule; provide "window" section for replaceable occupant name.
2. Conference and Meeting Rooms: Identify with room names and numbers as indicated on signage schedule.
3. Service Rooms: Identify with room names as indicated on signage schedule.
4. Rest Rooms: Identify with pictograms, the names "MEN" or "BOYS" and "WOMEN" or "GIRLS", and braille.
5. Stairways: Identify with pictograms and the name "STAIR", and braille.
6. Elevators: Identify with pictograms and the name "ELEVATOR", and braille.
 - a. Emergency text and Pictograms: Comply with requirements of authorities having jurisdiction indicating that in case of fire, elevators are out of service and stairway exits should be used instead.

- 7. Exits: Identify with text and braille.
- B. Interior Directional and Informational Panel Signs:
 - 1. Where suspended, ceiling mounted, or projecting from wall signs are indicated, provide two-sided signs with same information on both sides.

2.05 ACCESSORIES

- A. Tape Adhesive: Double-sided tape, permanent adhesive.

PART 3 EXECUTION

3.01 EXAMINATION

- A. Verify that substrate surfaces are ready to receive work.
- B. Notify Architect if conditions are not suitable for installation of signs; do not proceed until conditions are satisfactory.

3.02 INSTALLATION

- A. Install in accordance with manufacturer's instructions.
- B. Install with horizontal edges level.
- C. Locate panel signs and mount at heights indicated on drawings and in accordance with ADA Standards and ICC A117.1.
- D. Protect from damage until date of Substantial Completion; repair or replace damaged items.

END OF SECTION

SECTION 10 1426 - EXTERIOR SIGNAGE****BUL7******PART 1 GENERAL****1.01 RELATED DOCUMENTS**

- A. Drawings and general provisions of the Contract, including General and Supplementary Conditions and Division 01 Specification Sections, apply to this Section.

1.02 SUMMARY

- A. Section Includes:
 - 1. Exterior illuminated panel signs.
- B. Related Requirements:
 - 1. Division 26 Sections for Electrical Systems for power, labels, tags, and nameplates for electrical equipment.

1.03 DEFINITIONS

- A. Illuminated: Illuminated by lighting source integrally constructed as part of the sign unit.

1.04 COORDINATION

- A. Fabricate signage to utilize existing sign-anchorage devices and electrical service embedded in existing concrete base construction.

1.05 ACTION SUBMITTALS

- A. Product Data: For each type of product.
- B. Shop Drawings: For panel signs.
 - 1. Include fabrication and installation details and attachments to other work.
 - 2. Show sign mounting heights, locations of supplementary supports to be provided by others, and accessories.
 - 3. Show message list, typestyles, graphic elements and layout for each sign.
 - 4. Show locations of electrical service connections.
 - 5. Include diagrams for power, signal, and control wiring.
- C. Samples for Initial Selection: For each type of sign assembly, exposed component, and exposed finish.
 - 1. Include representative Samples of typestyles and graphic symbols.
- D. Samples for Verification: For each type of sign assembly showing all components and with the required finish(es), in manufacturer's standard size unless otherwise indicated and as follows:
 - 1. Panel Signs: Not less than 12 inches (300 mm) square, including corner.
- E. Delegated-Design Submittal:
 - 1. Include structural analysis calculations for signs indicated to comply with design loads; signed and sealed by the qualified professional engineer responsible for their preparation.

1.06 INFORMATIONAL SUBMITTALS

- A. Qualification Data: For installer and manufacturer.
- B. Sample Warranty: For special warranty.

1.07 CLOSEOUT SUBMITTALS

- A. Maintenance Data: For signs to include in maintenance manuals.

1.08 FIELD CONDITIONS

- A. Field Measurements: Verify locations of existing anchorage devices and electrical service embedded in permanent construction by other installers by field measurements before fabrication, and indicate measurements on Shop Drawings.

1.09 WARRANTY

- A. Special Warranty: Manufacturer agrees to repair or replace components of signs that fail in materials or workmanship within specified warranty period.
 - 1. Failures include, but are not limited to, the following:
 - a. Deterioration of finishes beyond normal weathering.

- b. Deterioration of embedded graphic image.
 - c. Separation or delamination of sheet materials and components.
2. Warranty Period: Five (5) years from date of Substantial Completion.

PART 2 PRODUCTS

2.01 PERFORMANCE REQUIREMENTS

- A. Delegated Design: Engage a qualified professional engineer, as defined in Division 1 Section "Quality Requirements," to design sign structure and anchorage of illuminated panel sign with reader board to withstand design loads.
- B. Thermal Movements: For exterior signs, allow for thermal movements from ambient and surface temperature changes.
 - 1. Temperature Change: 120 deg F (67 deg C), ambient; 180 deg F (100 deg C), material surfaces.
- C. Accessibility Standard: Comply with applicable provisions in the U.S. Architectural & Transportation Barriers Compliance Board's ADA-ABA Accessibility Guidelines for Buildings and Facilities and ICC A117.1 for signs.
- D. Electrical Components, Devices, and Accessories: Listed and labeled as defined in NFPA 70, by a qualified testing agency, and marked for intended location and application.

2.02 SIGNS

- A. Manufacturers:
 - 1. ASI Sign Systems, Inc. - Troy, MI (248)680-8970; www.asisignage.com
 - 2. Diskey Architectural Signage, Inc. – Fort Wayne, IN (800)669-4472; www.diskeysign.com
 - 3. J. L. Geisler Corporation, - Warren, MI (888) 637-7111
 - 4. Poblocki Sign Company, LLC – Milwaukee, WI (800)776-7064; www.poblocki.com
 - 5. Stamprite Supersine – Lansing, MI (517)487-5071; www.supersignstamps.com
 - 6. Phillips Sign & Lighting, Harrison Twp., MI 586-468-7110; www.phillipssign.com
 - 7. Universal Sign, Inc., Grand Rapids, MI 616-554-9999; www.universalsignsystems.com
- B. Panel Sign: Sign with smooth, uniform surfaces; with message and characters having uniform faces, sharp corners, and precisely formed lines and profiles; and as follows:
 - 1. Illuminated Panel Sign: Backlighted construction with LED lighting including transformers, insulators, and other accessories for operability, with provision for servicing and concealing connections to building electrical system. Use tight or sealed joint construction to prevent unintentional light leakage. Space lamps apart from each other and away from sign surfaces as needed to illuminate evenly.
 - 2. Sign-Panel Faces:
 - a. Prefinished aluminum face sheet with computer-routed text and white translucent fiberglass-reinforced acrylic modified polyester backer panels. All materials to be UV stable.
 - 3. Sign-Panel Perimeter: Finish edges smooth.
 - a. Edge Condition: Vertical and Horizontal Edges: Square cut.
 - b. Corner Condition in Elevation: Square.
 - 4. Frame: Entire perimeter and horizontal and vertical retainers.
 - a. Material: Aluminum.
 - b. Material Thickness: 0.125" (3.2mm).
 - c. Frame Depth: Match existing.
 - d. Profile: Square.
 - e. Corner Condition in Elevation: Square.
 - f. Finish and Color: Match Architect's sample.
 - 5. Mounting: Utilize existing anchor bolts embedded in concrete base. If a different bolt layout is required, include installation of new drilled chemical adhesive anchors. Cut off existing bolts if necessary for clearance.
 - 6. Surface Finish:
 - a. Baked enamel or powder coat finish: in color to match Architect's sample.

7. Text and Typeface: Cutout letters in face of panel to expose white acrylic lighted lens behind. Sizes and fonts as indicated on drawings.
8. Flatness Tolerance: Sign panel shall remain flat under installed conditions as indicated and within a tolerance of plus or minus 1/16 inch (1.5 mm)

2.03 PANEL-SIGN MATERIALS

- A. Aluminum Sheet and Plate: ASTM B 209 (ASTM B 209M), alloy and temper recommended by aluminum producer and finisher for type of use and finish indicated.
- B. Aluminum Extrusions: ASTM B 221 (ASTM B 221M), alloy and temper recommended by aluminum producer and finisher for type of use and finish indicated.
- C. Steel Materials:
 1. Steel Members Fabricated from Plate or Bar Stock: ASTM A 529/A 529M or ASTM A 572/A 572M, 42,000-psi (290-MPa) minimum yield strength.
 2. For steel exposed to view on completion, provide materials having flat, smooth surfaces without blemishes. Do not use materials whose surfaces exhibit pitting, seam marks, roller marks, rolled trade names, or roughness.
- D. Fiberglass-Reinforced Acrylic Sheet: Multiple laminations of translucent glass-fiber-reinforced acrylic-modified polyester resin with UV-light stable, colorfast, nonfading, weather- and stain-resistant, colored polyester gel coat, and with manufacturer's standard finish.

2.04 ELECTRONIC READER BOARDS

- A. See Section 10 1500 - Video Display Systems.

2.05 DIMENSIONAL CHARACTERS

- A. See Section 10 1419 - Dimensional Letter Signage.

2.06 ACCESSORIES

- A. Fasteners and Anchors: Manufacturer's standard as required for secure anchorage of signage, noncorrosive and compatible with each material joined, and complying with the following:
 1. Use concealed fasteners and anchors unless indicated to be exposed.
 2. For exterior exposure, furnish stainless-steel or hot-dip galvanized devices unless otherwise indicated.
 3. Exposed Metal-Fastener Components, General:
 - a. Fabricated from same basic metal and finish of fastened metal unless otherwise indicated.
 - b. Fastener Heads: For nonstructural connections, use flathead or oval countersunk screws and bolts with tamper-resistant slots unless otherwise indicated.
 4. Sign Mounting Fasteners:
 - a. Concealed Studs: Concealed (blind), threaded studs welded or brazed to back of sign material or screwed into back of sign assembly, unless otherwise indicated. Letter centers should be mounted to acrylic backup in this manner, along with adhesive.
 - b. Projecting Studs: Threaded studs with sleeve spacer, welded or brazed to back of sign material or screwed into back of sign assembly, unless otherwise indicated.
 - c. Through Fasteners: Exposed metal fasteners matching sign finish, with type of head indicated, installed in predrilled holes.
- B. Adhesive: As recommended by sign manufacturer.
- C. Bituminous Paint: Cold-applied asphalt emulsion complying with ASTM D 1187.

2.07 FABRICATION

- A. General: Provide manufacturer's standard sign assemblies according to requirements indicated.
 1. Preassemble signs and assemblies in the shop to greatest extent possible. Disassemble signs and assemblies only as necessary for shipping and handling limitations. Clearly mark units for reassembly and installation; apply markings in locations concealed from view after final assembly.

2. Mill joints to a tight, hairline fit. Form assemblies and joints exposed to weather to resist water penetration and retention.
3. Comply with AWS for recommended practices in welding and brazing. Provide welds and brazes behind finished surfaces without distorting or discoloring exposed side. Clean exposed welded and brazed connections of flux, and dress exposed and contact surfaces.
4. Conceal connections if possible; otherwise, locate connections where they are inconspicuous.
5. Internally brace signs for stability and for securing fasteners.
6. Provide rebates, lugs, and brackets necessary to assemble components and to attach to existing work. Drill and tap for required fasteners. Use concealed fasteners where possible; use exposed fasteners that match sign finish.

2.08 GENERAL FINISH REQUIREMENTS

- A. Protect mechanical finishes on exposed surfaces from damage by applying a strippable, temporary protective covering before shipping.
- B. Appearance of Finished Work: Noticeable variations in same piece are not acceptable. Variations in appearance of adjoining components are acceptable if they are within the range of approved Samples and are assembled or installed to minimize contrast.

2.09 ALUMINUM FINISHES

- A. Baked-Enamel or Powder-Coat Finish: AAMA 2603 except with a minimum dry film thickness of 1.5 mils (0.04 mm). Comply with coating manufacturer's written instructions for cleaning, conversion coating, and applying and baking finish.
- B. Silkscreen Text: Shop-applied silkscreen text shall be UV-stable, weather and abrasion resistant, and compatible with base sign finish.

2.10 METALLIC-COATED STEEL FINISHES

- A. Factory Prime Finish: After cleaning and pretreating, apply an air-dried primer compatible with the organic coating to be applied over it.
- B. Baked-Enamel or Powder-Coat Finish: After cleaning and pretreating, apply manufacturer's standard two-coat, baked-on finish consisting of prime coat and thermosetting topcoat to a minimum dry film thickness of 2 mils (0.05 mm).

2.11 STEEL FINISHES

- A. Surface Preparation: Remove mill scale and rust, if present, from uncoated steel, and prepare for coating according to coating manufacturer's written instructions.
 1. For Baked-Enamel or Powder-Coat Finish: After cleaning, apply a conversion coating compatible with the organic coating to be applied over it.
- B. Baked-Enamel or Powder-Coat Finish: After cleaning and pretreating, apply manufacturer's standard two-coat, baked-on finish consisting of prime coat and thermosetting topcoat to a minimum dry film thickness of 2 mils (0.05 mm).

PART 3 EXECUTION

3.01 EXAMINATION

- A. Examine substrates, areas, and conditions, with Installer present, for compliance with requirements for installation tolerances and other conditions affecting performance of signage work.
- B. Verify that sign-support surfaces are within tolerances to accommodate signs without gaps or irregularities between backs of signs and support surfaces unless otherwise indicated.
- C. Verify that anchor inserts are correctly sized and located to accommodate signs.
- D. Verify that electrical service is correctly sized and located to accommodate signs.
- E. Proceed with installation only after unsatisfactory conditions have been corrected.

3.02 INSTALLATION

- A. General: Install signs using mounting methods indicated and according to manufacturer's written instructions.
 - 1. Install signs level, plumb, true to line, and at locations and heights indicated, with sign surfaces free of distortion and other defects in appearance.
 - 2. Install signs so they do not protrude or obstruct according to the accessibility standard.
 - 3. Before installation, verify that sign surfaces are clean and free of materials or debris that would impair installation.
 - 4. Corrosion Protection: Coat concealed surfaces of exterior aluminum in contact with grout, concrete, masonry, wood, or dissimilar metals, with a heavy coat of bituminous paint.
- B. Mounting Methods:
 - 1. Concealed Studs: Reuse existing studs embedded in concrete base. Where not possible, install new studs using a template for layout, drill holes in substrate aligning with studs on bottom of sign. Remove loose debris from hole and substrate surface and install chemical adhesive anchors. Cut off existing studs if necessary for clearance.
 - 2. Shim-Plate Mounting: Provide 1/8-inch- (3-mm-) thick, concealed aluminum shim plates with predrilled and countersunk holes, at locations indicated, and where other direct mounting methods are impractical. Attach plate with fasteners and anchors suitable for secure attachment to substrate. Attach signs to plate using method specified above.

3.03 ADJUSTING AND CLEANING

- A. Remove and replace damaged or deformed signs and signs that do not comply with specified requirements. Replace signs with damaged or deteriorated finishes or components that cannot be successfully repaired by finish touchup or similar minor repair procedures.
- B. Remove temporary protective coverings and strippable films as signs are installed.
- C. On completion of installation, clean exposed surfaces of signs according to manufacturer's written instructions, and touch up minor nicks and abrasions in finish. Maintain signs in a clean condition during construction and protect from damage until acceptance by Owner.

END OF SECTION

SECTION 10 1500 - VIDEO DISPLAY SYSTEMS****BUL7******PART 1 GENERAL****1.01 SECTION INCLUDES**

- A. Panelized LED video display systems.

1.02 REFERENCE STANDARDS

- A. ANSI/Infocomm 10 - Audiovisual Systems Performance Verification; 2013.

1.03 ADMINISTRATIVE REQUIREMENTS

- A. Preinstallation Meeting: Conduct a preinstallation meeting two weeks prior to the start of the work of this section; require attendance by all affected installers.

1.04 SUBMITTALS

- A. See Section 01 3000 - Administrative Requirements, for submittal procedures.
- B. Product Data: Provide manufacturer's data sheets on panelized LED display systems including recommendations for preparation, storage and handling, and installation.
- C. Shop Drawings: Indicate cable routing, connections between equipment, anchor and support details, and adjacent construction.
- D. Manufacturer's Certificates: Certify products meet or exceed specified requirements.
- E. Project Record Documents: Provide quantities, type, and location for components, cabling and accessories.
- F. System Setting Backup: Provide an electronic file of all system settings.
- G. Security Items:
 - 1. Provide one set of keys for each locked equipment enclosure.
 - 2. Provide passwords to access control functions for hardware and software user interfaces.

1.05 QUALITY ASSURANCE

- A. Manufacturer Qualifications: Company specializing in manufacturing products specified in this section, with not less than three years of documented experience.
- B. Authorized Manufacturer Representative: System shall be configured and commissioned by an authorized manufacturer representative.
- C. Installer Qualifications: Company specializing in performing the work of this section with minimum five years of experience.

1.06 DELIVERY, STORAGE, AND HANDLING**1.07 WARRANTY**

- A. See Section 01 7800 - Closeout Submittals, for additional warranty requirements.

PART 2 PRODUCTS**2.01 MANUFACTURERS**

- A. Barco, Inc.: www.barco.com/#sle.
- B. Daktronics, Inc.: www.daktronics.com/#sle.
- C. LG Electronics: www.lg.com/us/business/#sle.
- D. Watchfire Signs, LLC: www.watchfiresigns.com
- E. Substitutions: See Section 01 6000 - Product Requirements.

2.02 PANELIZED LED VIDEO DISPLAY

- A. Performance Requirements:
 - 1. Comply with performance standards based on tests conducted in accordance with ANSI/Infocomm 10.
- B. System Type: Flat.
 - 1. Pixel Pitch: 10mm
 - 2. Horizontal Viewing Angle: 60 degrees.
 - 3. Vertical Viewing Angle: 70 degrees.

4. Brightness: 8,000 maximum; adjustable
 5. Mount Type: Free Standing/Self Supporting.
 6. Location: Outdoor.
 7. Panel Height: 35 inches (0.89 meters).
 8. Panel Length: 104 inches (2.64 meters).
 9. Panel Depth: 7 inches (0.18 meters).
 10. Service Access: Front.
 11. Data Connections: Shielded twisted pair CAT 5e/6e (Ethercon), Fiber Optic, or Remote Cellular.
 12. Input Source Compatibility: HDMI.
 13. Message Capability: Text, graphics, logos, basic animation, video clips, multiple font styles and sizes.
 14. Display Dimming: 64 levels (Automatic, Scheduled or Manual Control).
- C. Basis of Design: Daktronics Galaxy GT6x 10 MM

2.03 CONTROLS

- A. Interface Unit:
1. Working Voltage: 120 VAC / 240 VAC at 60Hz.

PART 3 EXECUTION

3.01 EXAMINATION

- A. Verify that substrates and support structure is in place and properly prepared.
- B. Verify that required power and data sources are provided.
- C. Verify that space is available for centrally located components.
- D. Notify Architect of unsatisfactory preparation before proceeding.

3.02 PREPARATION

- A. Prepare substrates using the methods recommended by the manufacturer for achieving the best result under the project conditions.
- B. Do not proceed with installation until support structure and substrates have been prepared using the methods recommended by the manufacturer and deviations from manufacturer's recommended tolerances are corrected. Commencement of installation constitutes acceptance of conditions.

3.03 INSTALLATION

- A. Install in accordance with manufacturer's instructions .
- B. Install message center and signs level and plumb with fasteners recommended by the manufacturer.
- C. Record any necessary changes to the system design.

3.04 CLOSEOUT ACTIVITIES

- A. See Section 01 7800 - Closeout Submittals, for closeout submittals.
- B. See Section 01 7900 - Demonstration and Training, for additional requirements.
- C. Demonstrate proper operation and maintenance of equipment to Owner's designated representative.
- D. Review service and support contacts.

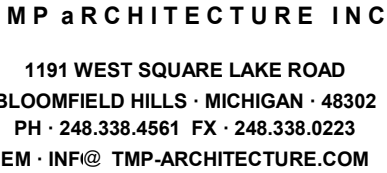
3.05 PROTECTION

- A. Protect installed products from subsequent construction operations.

END OF SECTION

INTERIOR SIGNAGE SCHEDULE										
Door No.	#	Room	Name	Type	Sign	Mounting	Backer Plate	Text		Comments
D1020	D102	MEDIA CENTER	S2	D	Yes	26	Yes	26		
D10A	D10A	SMALL GROUP 2	S2	D	Yes	26	Yes	26		
D10B	D10B	SMALL GROUP 1	S2	D	Yes	26	Yes	26		
D108	D108	OFFICE / STORAGE	S1	A	No	OFFICE				
D109A	D109	STORAGE	S2	A	No	STORAGE				
D110	D110	PASSAGE	S2	A	No	EXIT				
D119	D110	PASSAGE	S10	J	Yes	9				DOOR SIGN
D113A	D113	LIVE A	S2	D	Yes	22				
D114	D114	STORAGE	S2	B	No	STORAGE				
D117	D117	SPECIAL ED1	S2	A	No	19				
D118	D118	TOILET	S4	A	No	(GRAPHIC)	RESTROOM			
D121A	D121	SPECIAL ED3	S2	D	Yes	20				
D121B	D121	SPECIAL ED3	S2	D	Yes	20				
D121C	D121	SPECIAL ED3	S10	J	Yes	12				DOOR SIGN
D121D	D121	SPECIAL ED3	S2	A	No	20				
D121E	D121	SPECIAL ED3	S2	A	No	20				
D122	D122	SPECIAL ED2	S1	D	Yes	21				
D123	D123	TOILET	S4	A	No	(GRAPHIC)	RESTROOM			
ZONE E										
E101	E101	PASSAGE	S2	A	No	LEARNING COMMUNITIES AAB				HUNG FROM CEILING
E101A	E101	PASSAGE	S2	A	No	LEARNING COMMUNITIES CAD				
E102	E102	PASSAGE	S3	*	No	BELONG				VINYL LETTERING ON CEILING
E103	E103	ELEVATOR	S6	A	No	(GRAPHIC)	ELEVATOR			
E104A	E104	STAR 3	S7	A	No	(GRAPHIC)	STAIR			
E104B	E104	STAR 3	S2	D	Yes	EXIT				
E104B	E104	STAR 3	S10	J	Yes	17				DOOR SIGN
E105	E105	STAFF LOUNGE	S2	D	Yes	STAFF	LOUNGE			
E106	E106	WELLNESS	S2	A	No	WELLNESS	ROOM			
E107	E107	RESOURCE	S2	D	Yes	23				
E108A	E108	ELECTIVE	S2	D	Yes	24				
E109A	E109	LEARNING STUDIO	S2	A	No	A6				
E111A	E111	LEARNING STUDIO	S2	A	No	A5				
E112A	E112	STAR 4	S2	A	No	(GRAPHIC)	STAIR			
E112B	E112	STAR 4	S2	D	Yes	EXIT				
E112B	E112	STAR 4	S10	J	Yes	16				DOOR SIGN
E113	E113	TEACHER COLLAB	S2	D	Yes	TEACHER	COLLABORATION A			
E114	E114	TOILET	S4	A	No	(GRAPHIC)	RESTROOM			
E115	E115	LEARNING COMMONS	S2	D	Yes	EXIT				
E115	E115	LEARNING COMMONS	S10	J	Yes	15				DOOR SIGN
E116A	E116	LEARNING STUDIO	S2	A	No	A4				
E117A	E117	SMALL GROUP	S2	D	Yes	A3				
E118A	E118	SMALL GROUP	S2	D	Yes	A2				
E121A	E121	ACTIVE STUDIO	S2	D	Yes	A1				
E121C	E121	ACTIVE STUDIO	S2	D	Yes	A1				
E122A	E122	STORAGE	S2	A	No	STORAGE				
E122B	E122	STORAGE	S2	A	No	STORAGE				
E122C	E122	STORAGE	S2	A	No	STORAGE				
E123	E123	ELECTRICAL	S2	A	No	ELECTRICAL				
E124 WALL	E124	TOILETS	S4	A	No	(GRAPHIC)	RESTROOMS			
E125	E125	STORAGE	S2	A	No	STORAGE				
E127A	E127	LEARNING STUDIO	S2	A	No	B6				
E128A	E128	LEARNING STUDIO	S2	A	No	B5				
E129	E129	LEARNING COMMONS	S2	D	Yes	EXIT				
E129	E129	LEARNING COMMONS	S10	J	Yes	14				DOOR SIGN
E131A	E131	STAR 5	S2	C	Yes	EXIT				
E131A	E131	STAR 5	S10	J	Yes	13				DOOR SIGN
E131B	E131	STAR 5	S7	A	No	(GRAPHIC)	STAIR			
E132	E132	TEACHER COLLAB	S2	D	Yes	TEACHER	COLLABORATION B			
E133	E133	TOILET	S4	A	No	(GRAPHIC)	RESTROOM			
E134A	E134	LEARNING STUDIO	S2	A	No	B4				
E136A	E136	SMALL GROUP	S2	D	Yes	B3				
E137A	E137	SMALL GROUP	S2	D	Yes	B2				
E138B	E138	ACTIVE STUDIO	S2	D	Yes	B1				
E139C	E139	ACTIVE STUDIO	S2	D	Yes	B1				
E140	E140	TECH	S2	A	No	TECHNOLOGY				
ZONE F										
F101	F101	PASSAGE	S2	A	No	LEARNING COMMUNITIES AAB				HUNG FROM CEILING
F102	F102	PASSAGE	S2	A	No	LEARNING COMMUNITIES CAD				
F101A	F101	PASSAGE	S3	*	No	YOU				VINYL LETTERING ON CEILING
F105A	F105	RESOURCE	S2	A	No	YOU				
F106	F106	ESL	S2	D	Yes	18				
F108A	F108	LEARNING STUDIO	S2	A	No	D5				
F111A	F111	LEARNING STUDIO	S2	A	No	D5				
F113	F113	TEACHER COLLAB	S2	D	Yes	TEACHER	COLLABORATION D			
F114	F114	TOILET	S4	A	No	(GRAPHIC)	RESTROOM			
F115	F115	LEARNING COMMONS	S2	D	Yes	EXIT				
F115A	F115	LEARNING COMMONS	S10	J	Yes	11				DOOR SIGN
F116A	F116	LEARNING STUDIO	S2	A	No	D4				
F117A	F117	SMALL GROUP	S2	D	Yes	D3				
F118A	F118	SMALL GROUP	S2	D	Yes	D2				
F121A	F121	ACTIVE STUDIO	S2	D	Yes	D1				
F121C	F121	ACTIVE STUDIO	S2	D	Yes	D1				
F122A	F122	STORAGE	S2	A	No	STORAGE				
F122B	F122	STORAGE	S2	A	No	STORAGE				
F122C	F122	STORAGE	S2	A	No	STORAGE				
F123	F123	ELECTRICAL	S2	A	No	ELECTRICAL				
F124A	F124	TOILETS	S4	A	No	(GRAPHIC)	RESTROOMS			
F126	F126	TECH	S2	F	No	TECHNOLOGY				
F127A	F127	SENSORY	S2	A	No	SENSORY	ROOM			
F127B	F127	SENSORY	S2	A	No	SENSORY	ROOM			
F128A	F128	LEARNING STUDIO	S2	A	No	C6				
F129A	F129	LEARNING STUDIO	S2	A	No	C5				
F130	F130	CUSTODIAL	S2	A	No	CUSTODIAL				
F131	F131	LEARNING COMMONS	S2	D	Yes	EXIT				
F131A	F131	LEARNING COMMONS	S10	J	Yes	11				DOOR SIGN
F132	F132	TEACHER COLLAB	S2	D	Yes	TEACHER	COLLABORATION C			
F133	F133	TOILET	S4	A	No	(GRAPHIC)	RESTROOM			
F134A	F134	LEARNING STUDIO	S2	A	No	C4				
F135A	F135	SMALL GROUP	S2	D	Yes	C2				
F136A	F136	SMALL GROUP	S2	D	Yes	C3				
F138A	F121	ACTIVE STUDIO	S2	D	Yes	C1				
F139C	F121	ACTIVE STUDIO	S2	D	Yes	C1				
SECOND LEVEL										
ZONE D										
D202A	D202	LEARNING STUDIO	S2	D	Yes	26				
D204A	D204	LOUNGE	S2	D	Yes	25				
ZONE E										
E201	E201	PASSAGE	S2	A	No	LEARNING COMMUNITIES AAB				HUNG FROM CEILING
E201A	E201	PASSAGE	S2	A	No	LEARNING COMMUNITIES CAD				
E202	E202	PASSAGE	S3	*	No	BELONG				VINYL LETTERING ON CEILING
E203	E203	ELEVATOR	S6	A	No	(GRAPHIC)	ELEVATOR			
E204	E204	STAR 3	S7	A	No	(GRAPHIC)	STAIR			
E207	E207	RESOURCE	S2	D	Yes	27				
E208A	E208	ELECTIVE	S2	D	Yes	28				
E209A	E209	LEARNING STUDIO	S2	A	No	E6				
E210	E210	ELEVATOR CLOSET	S2	A	No	ELEVATOR	MACHINE			ROOM
E211A	E211	LEARNING STUDIO	S2	A	No	E5				
E212	E212	STAR 4	S7	A	No	(GRAPHIC)	STAIR			
E213	E213	TEACHER COLLAB	S2	D	Yes	TEACHER	COLLABORATION E			
E214	E214	TOILET	S4	A	No	(GRAPHIC)	RESTROOM			
E216A	E216	LEARNING STUDIO	S2	A	No	E4				
E217A	E217	SMALL GROUP	S2	D	Yes	E3				
E218A	E218	SMALL GROUP	S2	D	Yes	E2				
E221A	E221	ACTIVE STUDIO	S2	D	Yes	E1				
E221C	E221	ACTIVE STUDIO	S2	D	Yes	E1				
E222A	E222	STORAGE	S2	A	No	STORAGE				
E222B	E222	STORAGE	S2	A	No	STORAGE				
E222C	E222	STORAGE	S2	F	No	STORAGE				
E223	E223	ELECTRICAL	S2	A	No	ELECTRICAL				
E224 WALL	E224	TOILETS	S4	A	No	(GRAPHIC)	RESTROOMS			
E226	E226	STORAGE	S2	A	No	STORAGE				
E227A	E227	LEARNING STUDIO	S2	A	No	F6				
E228A	E228	LEARNING STUDIO	S2	A	No	F5				
E230	E230	CUSTODIAL	S2	A	No	CUSTODIAL				
E231	E231	STAR 5	S7	A	No	(GRAPHIC)	STAIR			
E232	E232	TEACHER COLLAB	S2	D	Yes	TEACHER	COLLABORATION F			
E233	E233	TOILET	S4	A	No					
E234A	E234	LEARNING STUDIO	S2	A	No	F4				
E235A	E235	SMALL GROUP	S2	D	Yes	F3				
E236A	E236	SMALL GROUP	S2	D	Yes	F2				
E238A	E238	ACTIVE STUDIO	S2	D	Yes	F1				
E239C	E238	ACTIVE STUDIO	S2	D	Yes	F1				
E240	E240	TECH	S2	A	No	TECHNOLOGY				

INTERIOR SIGNAGE SCHEDULE										
Door No.	#	Room	Name	Type	Sign	Mounting	Backer Plate	Text		Comments
FIRST LEVEL										
					S12	*	No	GYMNASIUM SMITH MIDDLE SCHOOL		DIMENSIONAL CHARACTERS
ZONE A										
A106	A106	CORRIDOR	S9	A	No	GYMNASIUM				HUNG FROM CEILING
A106	A106	CORRIDOR	S9	A	No	GYMNASIUM				HUNG FROM CEILING
A127	A127	CORRIDOR	S9	A	No	GYMNASIUM				HUNG FROM CEILING
A101	A101	PLATFORM STAIR	S7	A	No	STAIR TO PLATFORM				
A102B	A102	GYMNASIUM	S2	B	No	EXIT				
A102B	A102	GYMNASIUM	S10	J	Yes	28				DOOR SIGN
A102C	A102	GYMNASIUM	S10	J	Yes	29				DOOR SIGN
A102D	A102	GYMNASIUM	S2	B	No	EXIT				
A102E	A102	GYMNASIUM	S2	B	No	GYMNASIUM				
A102H	A102	GYMNASIUM	S2	B	No	GYMNASIUM				
A103	A103	STORAGE	S2	B	No	STORAGE				
A105	A105	RAMP	S2	A	No	RAMP TO PLATFORM				STAGE
A107A	A107	VESTIBULE	S2	C	Yes	EXIT				
A107B	A107	VESTIBULE	S10	J	Yes	27				DOOR SIGN
A107C	A107	VESTIBULE	S2	C	Yes	EXIT				
A109	A102	GYMNASIUM	S2	A	No	GYMNASIUM				
A110	A110	CHANGING	S4	A	No	GRAPHIC	CHANGING ROOM			
A111	A111	STORAGE	S2	B	No	STORAGE				
A112	A112	LOCKER ENTRY	S2	A	No	WOMEN'S LOCKER	ROOM			</




consultant

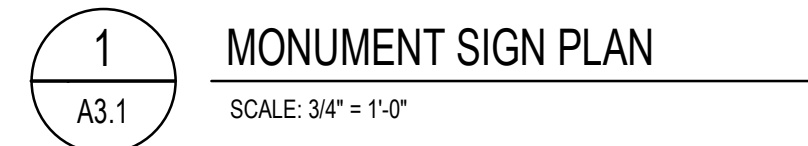
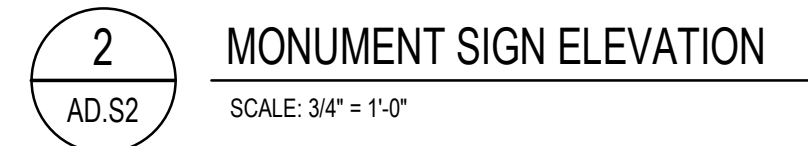
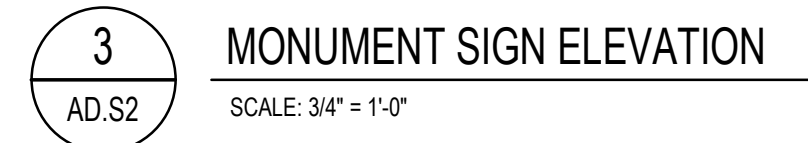
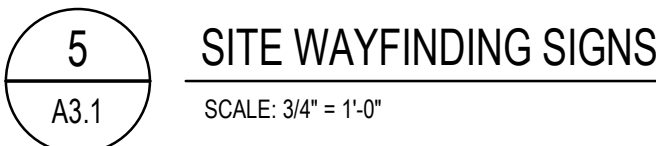
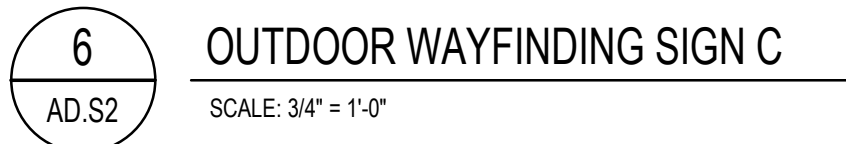
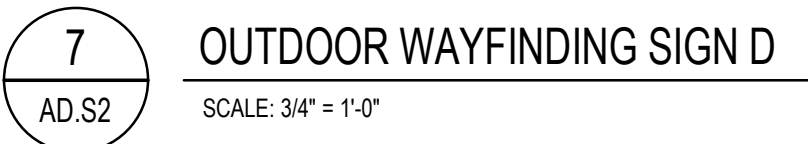
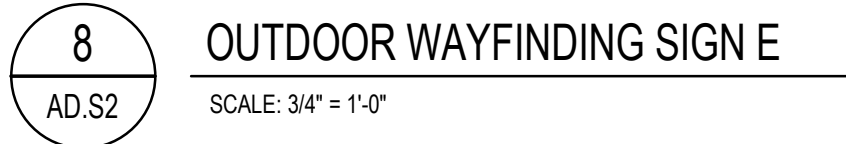
**NEW SMITH
MIDDLE SCHOOL**
Bid Package No. 03B

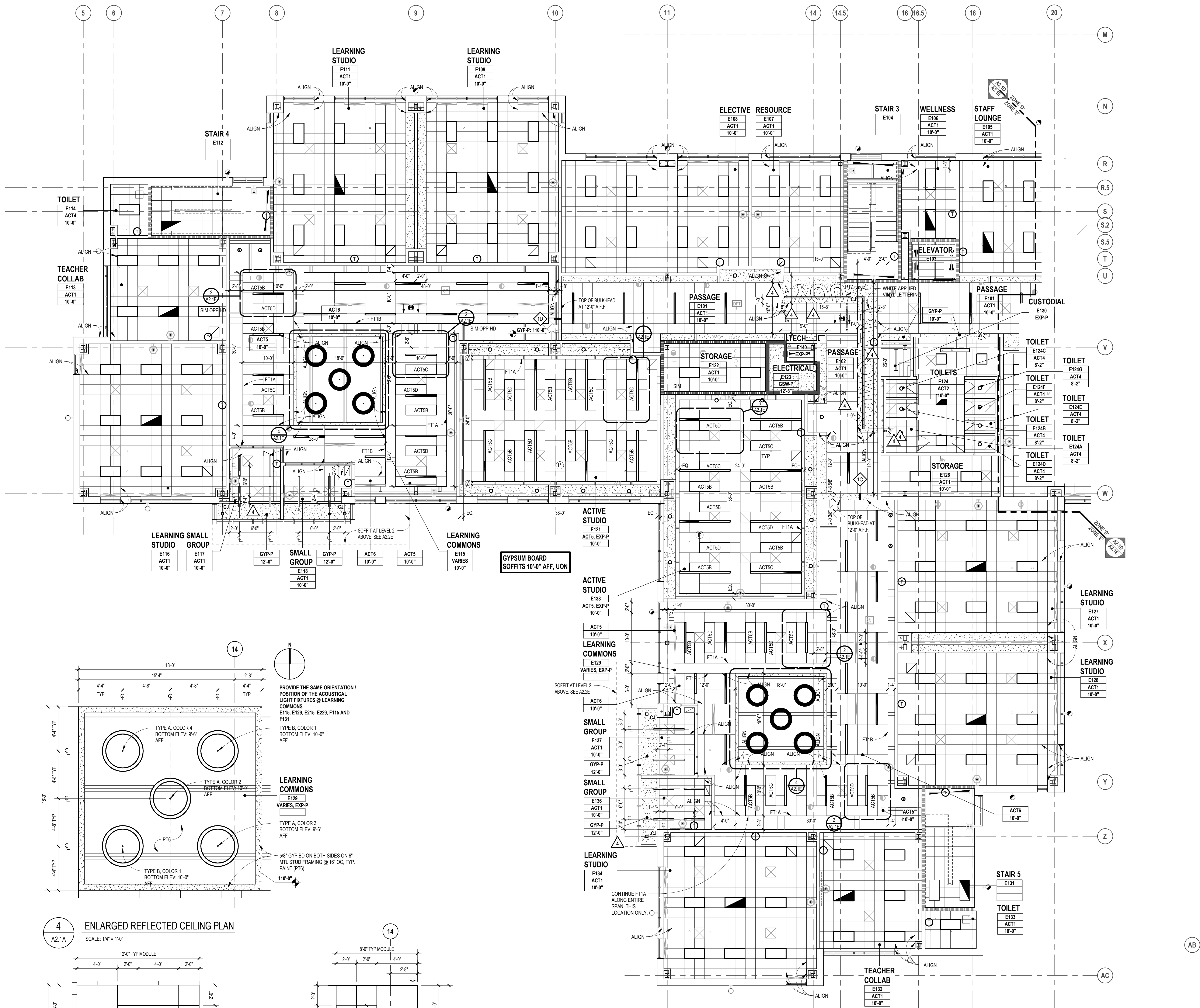
DRAWING TITLE
Exterior Signage

date:	issued for:
drawn	do
checked	jw
approved	dl

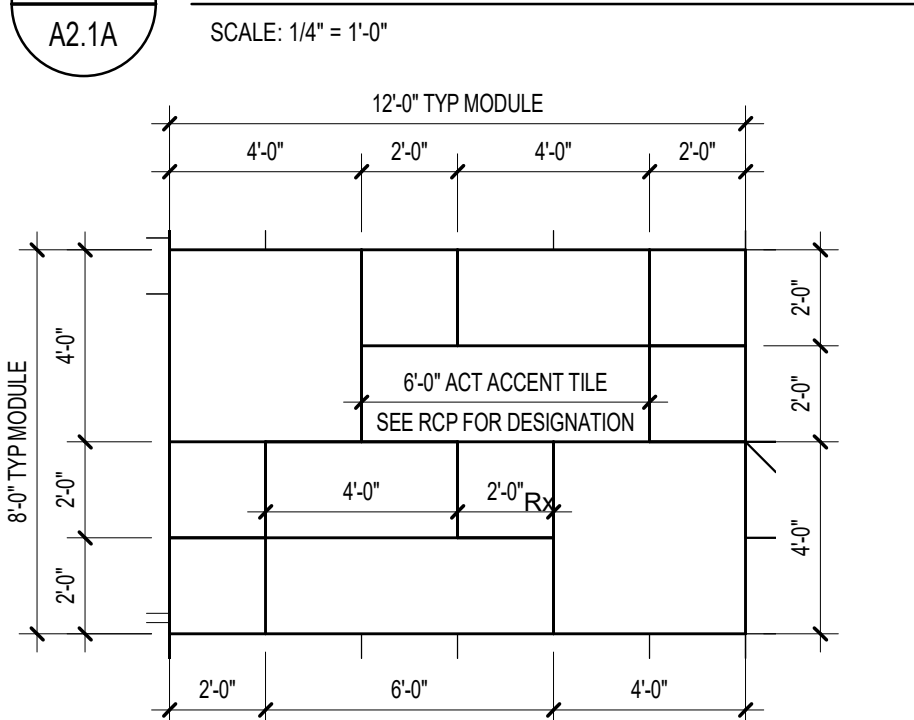
drawing no. 

AD.S2

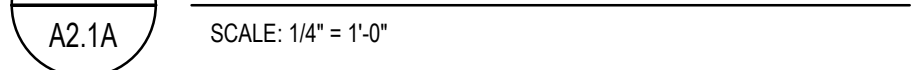




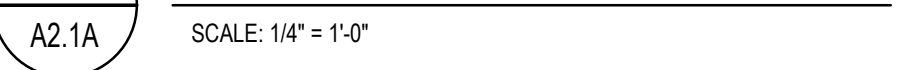
4 ENLARGED REFLECTED CEILING PLAN



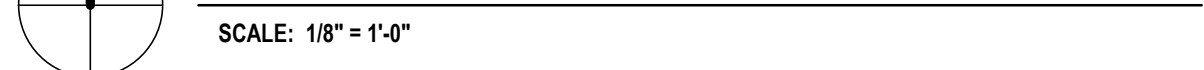
3 ENLARGED REFLECTED CEILING PLAN



2 ENLARGED REFLECTED CEILING PLAN



FIRST LEVEL REFLECTED CEILING PLAN - ZONE 'E'



FIXTURE LEGEND

	RECESSED L.E.D. TROFFER (2'x4' / 1'x4')
	L.E.D. INDUSTRIAL FIXTURE
	SURFACE MOUNTED LINEAR L.E.D. FIXTURE
	PENDANT MOUNTED LINEAR L.E.D. FIXTURE
	RECESSED DOWNLIGHT
	EXIT SIGN
	SPEAKER

FIRE / LIFE SAFETY FIXTURES: SEE ELECTRICAL, FIRE PROTECTION, PLUMBING, AND TECHNOLOGY DRAWINGS & SPECIFICATIONS

MECHANICAL EQUIPMENT / FIXTURES: SEE MECHANICAL DRAWINGS & SPECIFICATIONS

	SUPPLY DIFFUSER
	RETURN-AIR / EXHAUST GRILLE

CEILING KEY

	GYPSUM BOARD (PAINTED) OR INTERIOR / EXTERIOR FINISH SYSTEM CEILING / SOFFIT
	SUSPENDED LAY-IN ACOUSTICAL CEILING - SEE SPECIFICATIONS FOR SIZES
	EXPOSED CONSTRUCTION (PAINTED U.O.N.)
	2x4 SUSPENDED LAY-IN ACOUSTICAL CEILING MATCHING ADJACENT CEILING TILE, CUT TILE TO FIT LARGER GRID SIZE AT SPACE PERIMETER.

CEILING LEGEND

ROOM/CEILING TAGS	CEILING FINISH TAGS
ROOM NAME AND NUMBER PLUS GENERAL CEILING FINISH AND HEIGHT UNLESS OTHERWISE NOTED CEILING FINISH TAGS.	SPECIFIC FINISH / HEIGHT WHERE VARYING FROM GENERAL ROOM / CEILING TAGS.
ROOM NAME	ROOM NAME
ACT	ROOM NUMBER
ACT	CEILING FINISH ABBREVIATION (SEE BELOW)
ACT	CEILING HEIGHT (AFF)

CEILING FINISH ABBREVIATIONS

AB	ACOUSTICAL Baffle PANEL - SUSPENDED
ACT	ACOUSTICAL LAY-IN CEILING TILE
ALUM	ALUMINUM PANEL
AWFP	ACOUSTICAL WOOD FIBER PANELS - SURFACE MOUNTED
AWP	ACOUSTICAL WALL PANEL
DMFS	DIRECT APPLIED EXTERIOR FINISH SYSTEM (SYNTHETIC VENEER PLASTER)
DPF	MOLDED DIFFUSER PANEL
EXP-P	EXPOSED CONSTRUCTION - PAINTED
EXP-F	EXPOSED CONSTRUCTION - UNFINISHED
FT1	FASCIA TRIM AT CEILING PERIMETER
GSW-P	GYPSUM BOARD SHIRT WALL - PAINTED - SEE LS SHEETS FOR RATING
GYP-P	GYPSUM BOARD - PAINTED
GYP-EP	GYPSUM BOARD - EPOXY PAINTED
OCMC	OPEN CELL METAL CEILING
PTD	PAINTED
RCP	RADIANT CEILING PANELS
UF	UNFINISHED
SMP	SOFFIT METAL PANEL
WFP-P	CEMENTITIOUS WOOD FIBER PANEL - PAINTED

- NOTES
- REFER TO FINISH PLANS FOR INFORMATION ON ROOM FINISHES.
 - REFER TO ARCHITECTURAL PLANS AND SPECIFICATIONS FOR ADDITIONAL INFORMATION ON MATERIALS AND CONSTRUCTION.
 - WHERE EXPOSED CONSTRUCTION IS INDICATED TO BE PAINTED, THIS SHALL INCLUDE ALL STRUCTURAL MEMBERS, ROOF / FLOOR DECK, DUCTWORK, DIFFUSERS, GRILLES, PIPING, SUSPENDED EQUIPMENT, CONDUITS, ETC. (U.O.N.).

WALL FIRE RATING LEGEND

	2-HOUR FIRE WALL FOR AREA COMPLIANCE
	2-HOUR FIRE BARRIER FOR ELECTRICAL
	1-HOUR FIRE BARRIER FOR EXIT ENCLOSURES & ELEVATORS
	1-HOUR FIRE BARRIER AT HVAC SHAFTS
	1-HOUR FIRE BARRIER FOR SCIENCE LABS
	1-HOUR FIRE BARRIER HAZARDS / INCIDENTAL USES
	SMOKE BARRIER FOR VERTICALLY COMMUNICATING SPACES
	SMOKE PARTITION FOR EGRESS CORRIDORS
	NON RATED WALLS TO STRUCTURE ABOVE

GENERAL NOTES

- REFER TO ELECTRICAL DRAWINGS FOR FIXTURE TYPES. REFER ELECTRICAL AND MECHANICAL DRAWINGS FOR ADDITIONAL INFORMATION PERTAINING TO ELECTRICAL AND MECHANICAL WORK.
- COORDINATE SIZE AND LOCATION OF ALL ACCESS PANELS WITH TRADE REQUIRING THE SAME. ACCESS PANELS ARE SPECIFIED ARCHITECTURALLY BUT ARE REQUIRED TO BE PROVIDED BY TRADE. SPOT ALL LOCATIONS WITHIN FIXED GYPSUM BOARD CEILINGS AND RECEIVE APPROVAL FROM THE ARCHITECT'S FIELD REPRESENTATIVE BEFORE PLACEMENT.
- COORDINATE CEILING SUSPENSION SYSTEMS WITH OTHER CEILING SPACE EQUIPMENT SUPPORTS.
- ALL FIRE WALLS, FIRE BARRIERS, FIRE PARTITIONS, SMOKE BARRIERS AND SMOKE PARTITIONS (ABOVE ACCESSIBLE CEILING) SHALL BE MARKED EVERY 30" HORIZONTALLY AND WITHIN 15" OF ENDS OF WALLS - "FIRE AND/OR SMOKE BARRIER - PROTECT ALL OPENINGS". REFER TO CURRENT BUILDING CODE FOR LETTERING HEIGHT, STROKE AND CONTRAST.
- ALL GYPSUM BOARD FASCIAE @ SOFFITS, ADJACENT TO LAY-IN CEILINGS, SHALL EXTEND 4" MINIMUM ABOVE LAY-IN CEILINGS.
- INSTALL CONTROL JOINTS IN GYPSUM BOARD AND METAL STUD-FRAMED PARTITIONS, WALLS, CEILINGS, BULKHEADS, FASCIAE AND SOFFITS IN COMPLIANCE WITH SPECIFICATIONS, AND WITH GENERAL REQUIREMENTS OF ASTM C841. PRIOR TO COMMENCEMENT OF FRAMING INSTALLATION SUBMIT COORDINATION DRAWINGS INDICATING PROPOSED LOCATIONS OF ALL CONTROL JOINTS, AS SPECIFIED.
- PROVIDE WOOD BLOCKING, ABOVE GYPSUM BOARD CEILINGS, AS REQUIRED FOR MISCELLANEOUS SUSPENDED ITEMS (e.g. CURTAIN TRACKS, WINDOW SHADES, ACOUSTICAL Baffles, ETC.).
- REFER TO DRAWINGS A... FOR TYPICAL DETAILS PERTAINING TO WALL TERMINATIONS AT STRUCTURE ABOVE.
- SEE LIFE SAFETY PLANS FOR DAMPERING REQUIREMENTS.
- CENTER SPRINKLER HEADS AT THE CENTER OF CEILING PANEL UNLESS SHOWN OTHERWISE.



TMP ARCHITECTURE INC
1191 WEST SQUARE LAKE ROAD
BLOOMFIELD HILLS / MICHIGAN 48302
PH: 248.338.4691 FX: 248.338.9223
EM: INFO@TMP-ARCHITECTURE.COM

registration seal

consultant

PROJECT TITLE

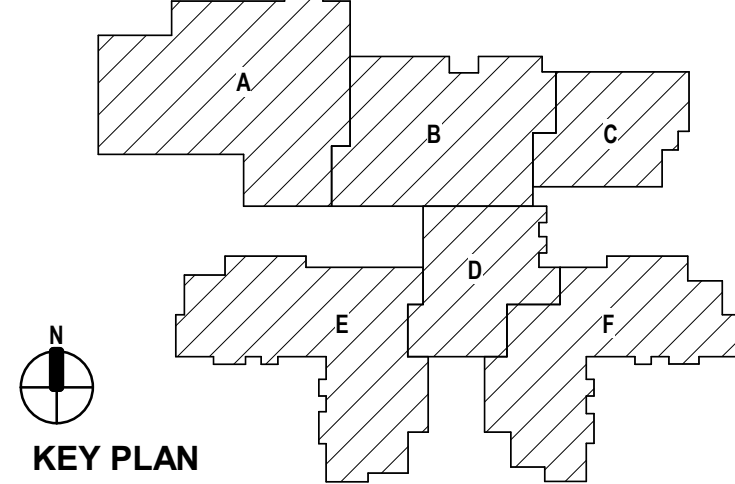
NEW SMITH
MIDDLE SCHOOL

Bid Package No. 03B

Troy School District
Troy, Michigan

DRAWING TITLE

First Level Reflected Ceiling
Plan - Zone 'E'



KEY PLAN

issue dates

DATE	ISSUED FOR:
01-13-2025	BULLETIN NO. 7
11-13-2024	BULLETIN NO. 4
10-31-2024	CONSTRUCTION SET
06-16-2024	CONSTRUCTION DOCUMENTS

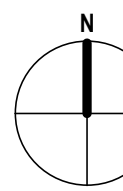
date:	issued for:
drawn:	do
checked:	jw
approved:	dl

project no.


22102

drawing no.

A2.1E

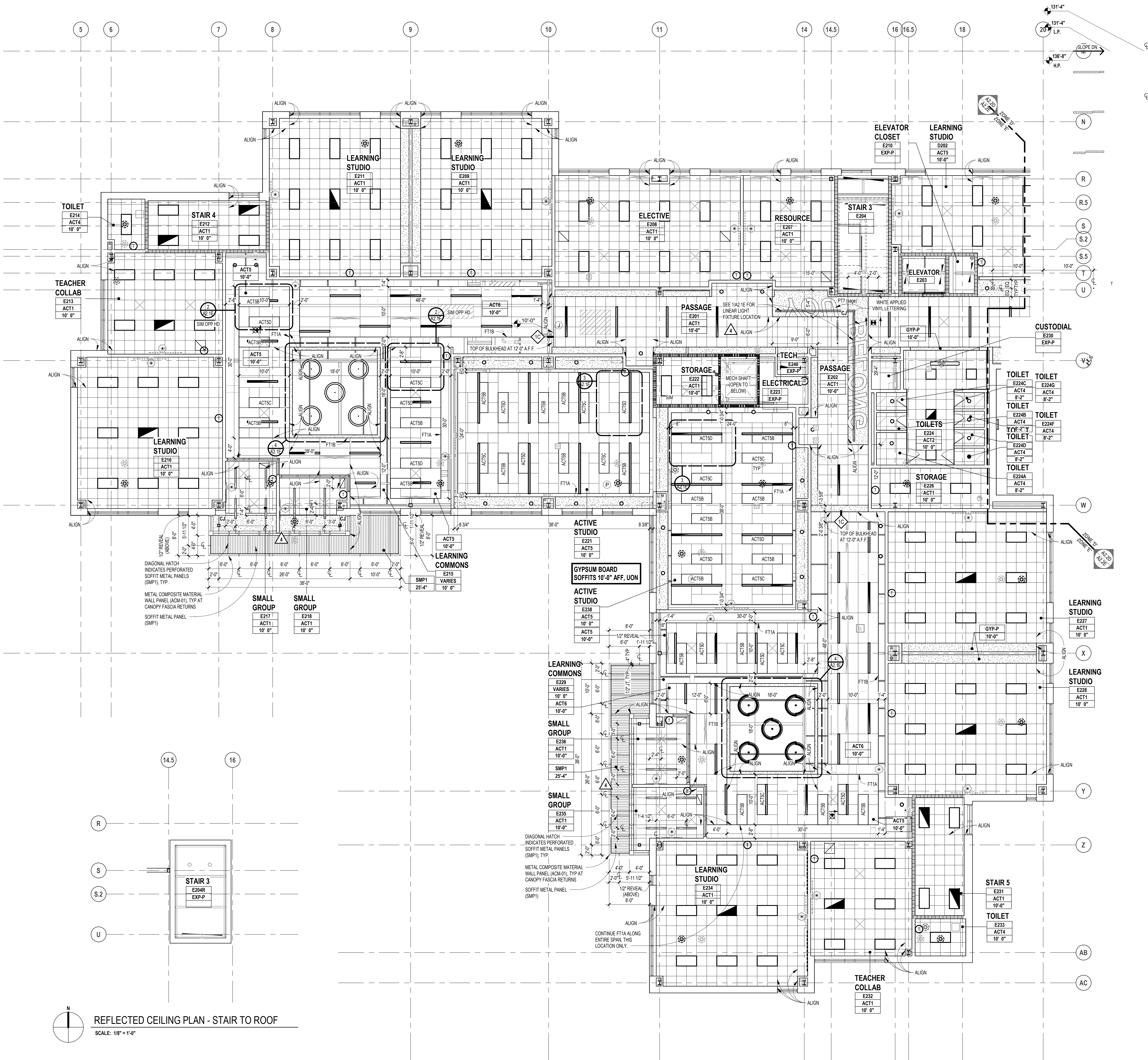


SCALE: 1/8" = 1'-0"

drawing no.  7

A2.1F

Autodesk Docs/22102_Troy Smith MS22102-ARCH-22.rvt
1/13/2025 10:50:09 AM



FIXTURE LEGEND

- RECESSED L.E.D. TROFFER (2'x4' / 1'x4')
- L.E.D. INDUSTRIAL FIXTURE
- SURFACE MOUNTED LINEAR L.E.D. FIXTURE
- PENDANT MOUNTED LINEAR L.E.D. FIXTURE
- RECESSED DOWNLIGHT
- EXIT SIGN
- SPEAKER

FIRE / LIFE SAFETY FIXTURES: SEE ELECTRICAL, FIRE PROTECTION, PLUMBING, AND TECHNOLOGY DRAWINGS & SPECIFICATIONS

MECHANICAL EQUIPMENT / FIXTURES: SEE MECHANICAL DRAWINGS & SPECIFICATIONS

- SUPPLY DIFFUSER
- RETURN-AIR / EXHAUST GRILLE

CEILING KEY

- GYPSUM BOARD (PAINTED) OR INTERIOR / EXTERIOR FINISH SYSTEM CEILING / SOFFIT
- SUSPENDED LAY-IN ACOUSTICAL CEILING - SEE SPECIFICATIONS FOR SIZES
- EXPOSED CONSTRUCTION (PAINTED U.O.N.)
- 2x4 SUSPENDED LAY-IN ACOUSTICAL CEILING MATCHING ADJACENT CEILING TILE. CUT TILE TO FIT LARGER GRID SIZE AT SPACE PERIMETER.

CEILING LEGEND

ROOM/CEILING TAGS: ROOM NAME AND NUMBER PLUS GENERAL CEILING FINISH AND HEIGHT UNLESS OTHERWISE NOTED CEILING FINISH TAGS.

CEILING FINISH TAG: SPECIFIC FINISH / HEIGHT WHERE VARYING FROM GENERAL ROOM / CEILING TAGS.

ROOM NAME: ROOM NAME, ROOM NUMBER, CEILING FINISH ABBREVIATION (SEE BELOW), CEILING HEIGHT (AFF)

CEILING FINISH ABBREVIATIONS

- AB: ACOUSTICAL Baffle PANEL - SUSPENDED
- ACT: ACOUSTICAL LAY-IN CEILING TILE
- ALUM: ALUMINUM PANEL
- AWFP: ACOUSTICAL WOOD FIBER PANELS - SURFACE MOUNTED
- AWP: ACOUSTICAL WALL PANEL
- DMS: DIRECT APPLIED EXTERIOR FINISH SYSTEM (SYNTHETIC VENEER PLASTER)
- DFP: MOLDED DIFFUSER PANEL
- EXP-P: EXPOSED CONSTRUCTION - PAINTED
- EXP-UF: EXPOSED CONSTRUCTION - UNFINISHED
- FT1: FASCIA TRIM AT CEILING PERIMETER
- GSM-P: GYPSUM BOARD SHAF WALL - PAINTED - SEE LS SHEETS FOR RATING
- GYP-P: GYPSUM BOARD - PAINTED
- GYP-EP: GYPSUM BOARD - EPOXY PAINTED
- OCMC: OPEN CELL METAL CEILING
- PTD: PAINTED
- RCP: RADIANT CEILING PANELS
- UF: UNFINISHED
- SMP1: SOFFIT METAL PANEL
- WFP-P: CEMENTITIOUS WOOD FIBER PANEL - PAINTED

- NOTES: 1. REFER TO FINISH PLANS FOR INFORMATION ON ROOM FINISHES. 2. REFER TO ARCHITECTURAL PLANS AND SPECIFICATIONS FOR ADDITIONAL INFORMATION ON MATERIALS AND CONSTRUCTION. 3. WHERE EXPOSED CONSTRUCTION IS INDICATED TO BE PAINTED, THIS SHALL INCLUDE ALL STRUCTURAL MEMBERS, ROOF / FLOOR DECK, DUCTWORK, DIFFUSERS, GRILLES, PIPING, SUSPENDED EQUIPMENT, CONDUITS, ETC. (U.O.N.).

WALL FIRE RATING LEGEND

- 2-HOUR FIRE WALL FOR AREA COMPLIANCE
- 2-HOUR FIRE BARRIER FOR ELECTRICAL
- 1-HOUR FIRE BARRIER FOR EXIT ENCLOSURES & ELEVATORS
- 1-HOUR FIRE BARRIER AT HVAC SHAFTS
- 1-HOUR FIRE BARRIER FOR SCIENCE LABS
- 1-HOUR FIRE BARRIER HAZARDS / INCIDENTAL USES
- SMOKE BARRIER FOR VERTICALLY COMMUNICATING SPACES
- SMOKE PARTITION FOR EGRESS CORRIDORS
- NON RATED WALLS TO STRUCTURE ABOVE

GENERAL NOTES

- 1. REFER TO ELECTRICAL DRAWINGS FOR FIXTURE TYPES. REFER ELECTRICAL AND MECHANICAL DRAWINGS FOR ADDITIONAL INFORMATION PERTAINING TO ELECTRICAL AND MECHANICAL WORK.
- 2. COORDINATE SIZE AND LOCATION OF ALL ACCESS PANELS WITH TRADE REQUIRING THE SAME. ACCESS PANELS ARE SPECIFIED ARCHITECTURALLY BUT ARE REQUIRED TO BE PROVIDED BY TRADE. SPOT ALL LOCATIONS WITHIN FIXED GYPSUM BOARD CEILINGS AND RECEIVE APPROVAL FROM THE ARCHITECT'S FIELD REPRESENTATIVE BEFORE PLACEMENT.
- 3. COORDINATE CEILING SUSPENSION SYSTEMS WITH OTHER CEILING SPACE EQUIPMENT SUPPORTS.
- 4. ALL FIRE WALLS, FIRE BARRIERS, FIRE PARTITIONS, SMOKE BARRIERS AND SMOKE PARTITIONS (ABOVE ACCESSIBLE CEILING) SHALL BE MARKED EVERY 36" HORIZONTALLY AND WITHIN 15" OF ENDS OF WALLS. "FIRE AND/OR SMOKE BARRIER - PROTECT ALL OPENINGS". REFER TO CURRENT BUILDING CODE FOR LETTERING HEIGHT, STROKE AND CONTRAST.
- 5. ALL GYPSUM BOARD FASCIA @ SOFFITS, ADJACENT TO LAY-IN CEILINGS, SHALL EXTEND 4" MINIMUM ABOVE LAY-IN CEILINGS.
- 6. INSTALL CONTROL JOINTS IN GYPSUM BOARD AND METAL STUD-FRAMED PARTITIONS, WALLS, CEILINGS, BULKHEADS, FASCIAE AND SOFFITS IN COMPLIANCE WITH SPECIFICATIONS, AND WITH GENERAL REQUIREMENTS OF ASTM C841. PRIOR TO COMMENCEMENT OF FRAMING INSTALLATION SUBMIT COORDINATION DRAWINGS INDICATING PROPOSED LOCATIONS OF ALL CONTROL JOINTS, AS SPECIFIED.
- 7. PROVIDE WOOD BLOCKING, ABOVE GYPSUM BOARD CEILINGS, AS REQUIRED FOR MISCELLANEOUS SUSPENDED ITEMS (e.g. CURTAIN TRACKS, WINDOW SHADES, ACOUSTICAL Baffles, ETC.).
- 8. REFER TO DRAWINGS A... FOR TYPICAL DETAILS PERTAINING TO WALL TERMINATIONS AT STRUCTURE ABOVE.
- 9. SEE LIFE SAFETY PLANS FOR DAMPERING REQUIREMENTS.
- 10. CENTER SPRINKLER HEADS AT THE CENTER OF CEILING PANEL UNLESS SHOWN OTHERWISE.



TMP ARCHITECTURE INC.

1191 WEST SQUARE LAKE ROAD
BLOOMFIELD HILLS - MICHIGAN 48302
PH: 248.338.4691 FX: 248.338.8023
EM: INFO@TMP-ARCHITECTURE.COM

registration seal

consultant

PROJECT TITLE

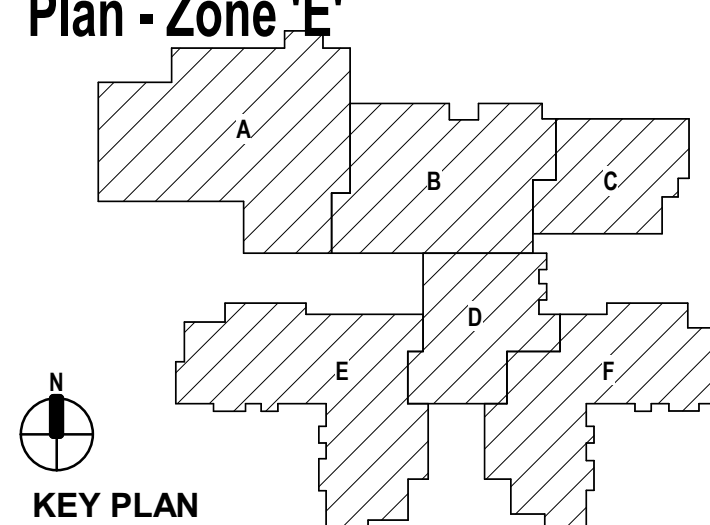
**NEW SMITH
MIDDLE SCHOOL**

Bid Package No. 03B

**Troy School District
Troy, Michigan**

DRAWING TITLE

**Second Level Reflected Ceiling
Plan - Zone 'E'**



KEY PLAN

issue dates

date	issued for:
01-13-2025	BULLETIN NO. 7
11-13-2024	BULLETIN NO. 4
10-31-2024	CONSTRUCTION SET
06-16-2024	CONSTRUCTION DOCUMENTS
drawn	do
checked	jw
approved	dl

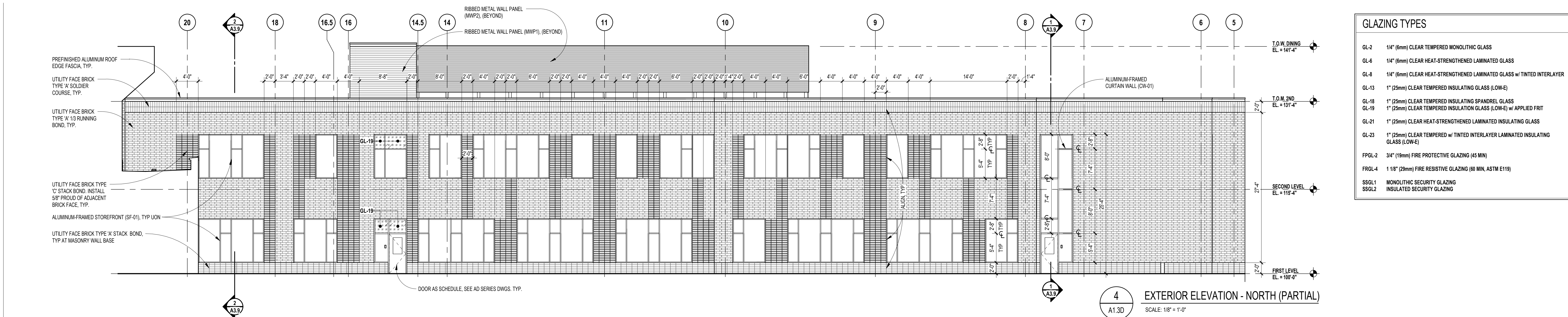
project no.

22102

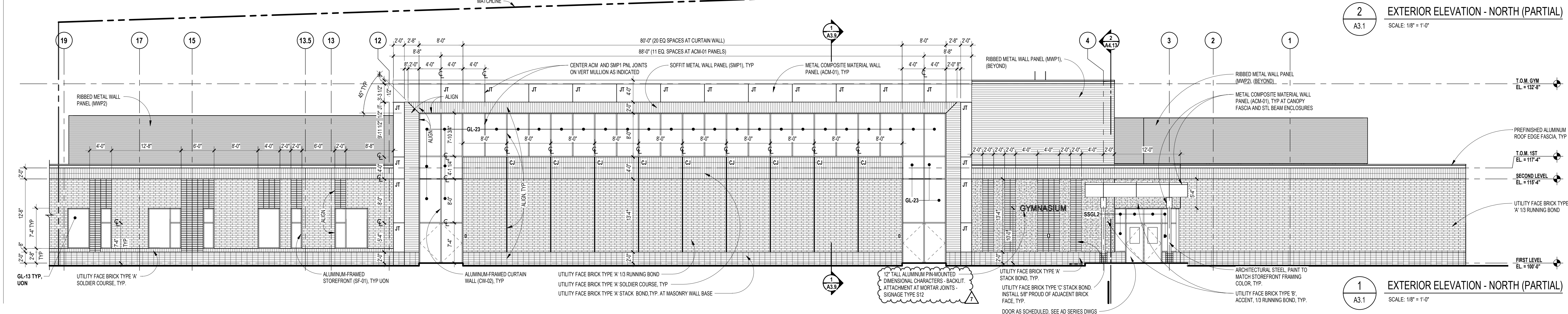
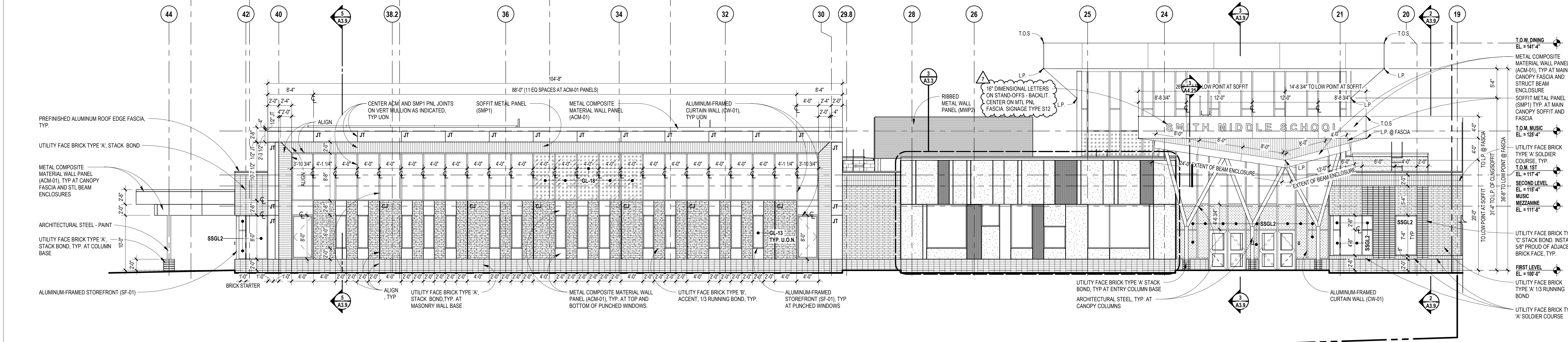
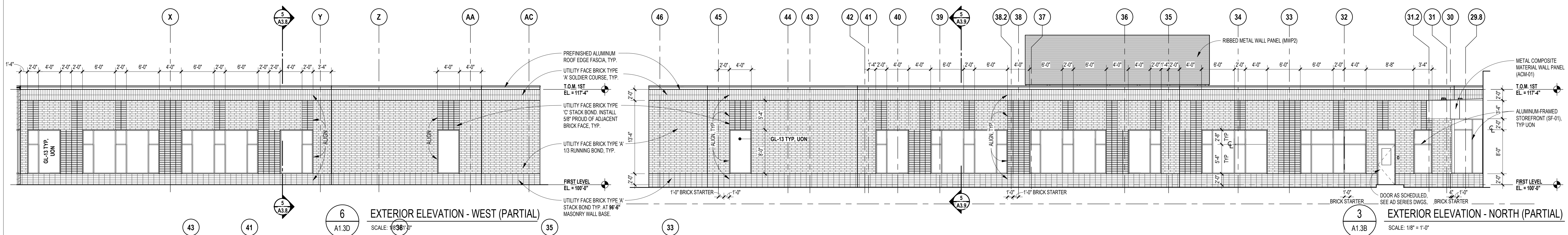
drawing no.

A2.2E

Autodesk Docs/22102_Troy Smith MS22102-ARCH-22.rvt
11/13/2025 10:50:42 AM



GLAZING TYPES	
GL-2	1/4" (6mm) CLEAR TEMPERED MONOLITHIC GLASS
GL-4	1/4" (6mm) CLEAR HEAT-STRENGTHENED LAMINATED GLASS
GL-8	1/4" (6mm) CLEAR HEAT-STRENGTHENED LAMINATED GLASS w/ TINTED INTERLAYER
GL-13	1" (25mm) CLEAR TEMPERED INSULATING GLASS (LOW-E)
GL-16	1" (25mm) CLEAR TEMPERED INSULATING SPANDREL GLASS
GL-19	1" (25mm) CLEAR TEMPERED INSULATING GLASS (LOW-E) w/ APPLIED FRIT
GL-21	1" (25mm) CLEAR HEAT-STRENGTHENED LAMINATED INSULATING GLASS
GL-23	1" (25mm) CLEAR TEMPERED w/ TINTED INTERLAYER LAMINATED INSULATING GLASS (LOW-E)
FPGL-2	3/4" (19mm) FIRE PROTECTIVE GLAZING (45 MIN)
FRGL-4	1 1/8" (29mm) FIRE RESISTIVE GLAZING (60 MIN, ASTM E119)
SSGL1	MONOLITHIC SECURITY GLAZING
SSGL2	INSULATED SECURITY GLAZING



TMP ARCHITECTURE INC
1191 WEST SQUARE LAKE ROAD
BLOOMFIELD HILLS - MICHIGAN 48302
PH: 248.338.4691 FX: 248.338.8223
EM: INF@TMP-ARCHITECTURE.COM

registration seal

consultant

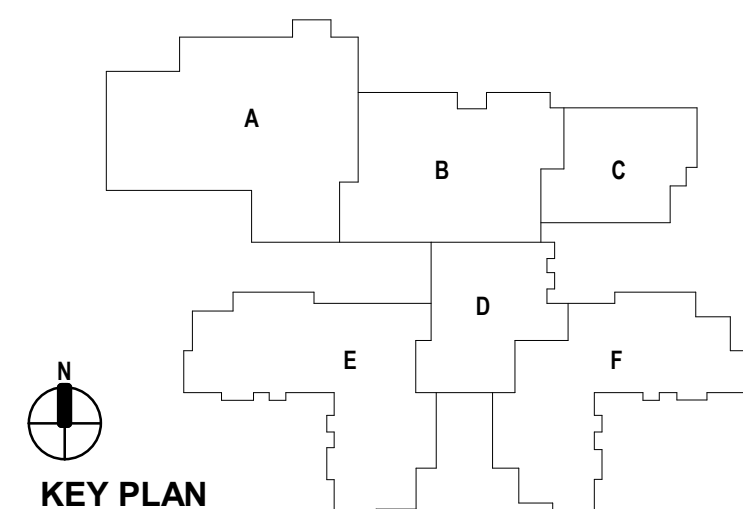
PROJECT TITLE

**NEW SMITH
MIDDLE SCHOOL**
Bid Package No. 03B

**Troy School District
Troy, Michigan**

DRAWING TITLE

Exterior Elevations



issue dates

01-13-2025 BULLETIN NO. 7
10-31-2024 CONSTRUCTION SET
06-16-2024 CONSTRUCTION DOCUMENTS

date: issued for:

drawn do

checked jw

approved dl

project no.

22102

drawing no.

A3.2



TMP ARCHITECTURE INC
1191 WEST SQUARE LAKE ROAD
BLOOMFIELD HILLS, MICHIGAN 48302
PH: 248.338-4491 FX: 248.338-9223
EM: INF@TMP-ARCHITECTURE.COM

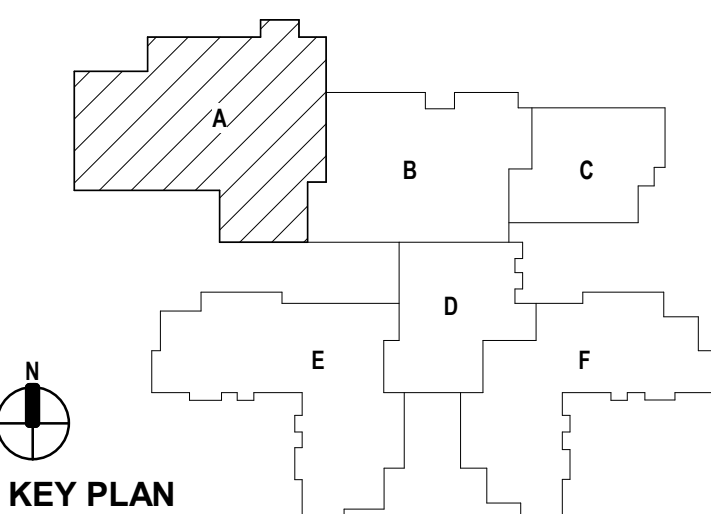
registration seal

consultant

PROJECT TITLE
**NEW SMITH
MIDDLE SCHOOL**
Bid Package No. 03B

Troy School District
Troy, Michigan

DRAWING TITLE
Interior Elevations



issue dates

01-13-2025 BULLETIN NO. 7
10-31-2024 CONSTRUCTION SET
06-16-2024 CONSTRUCTION DOCUMENTS

date: issued for:

drawn do

checked jw

approved dl

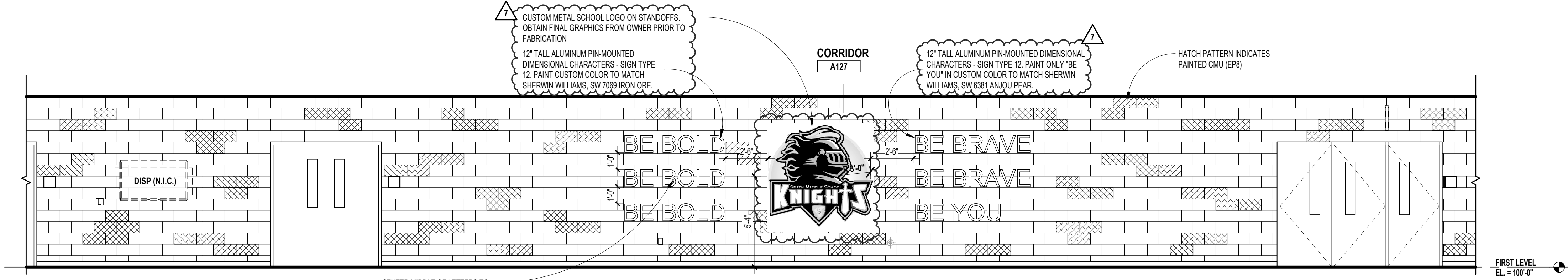
project no.

22102

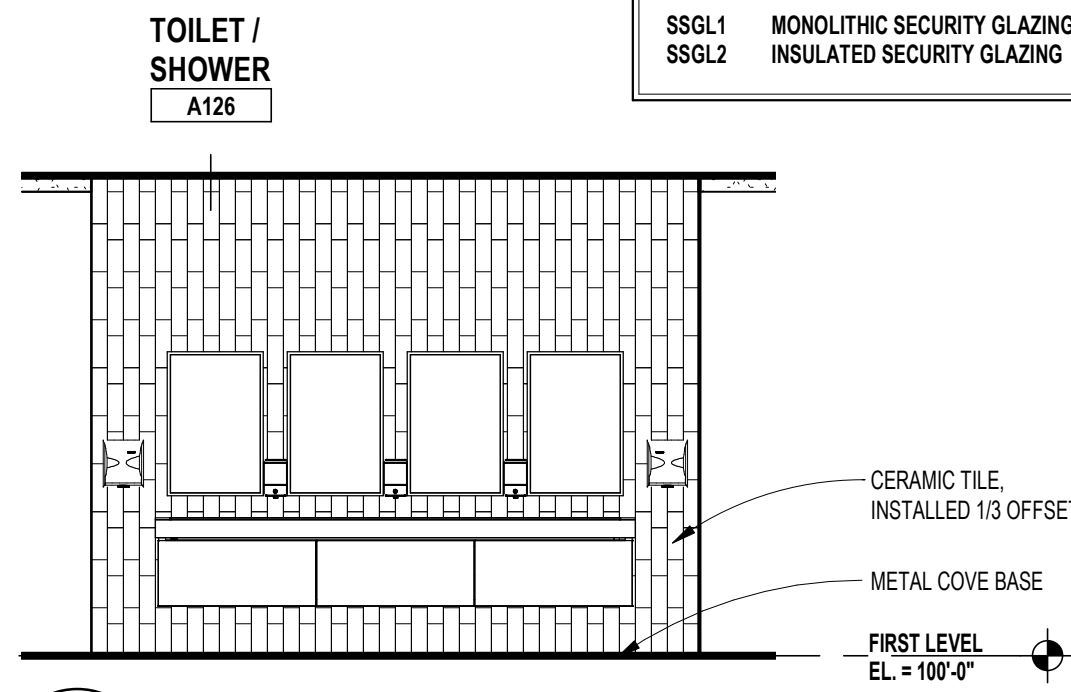
drawing no.

A7.2

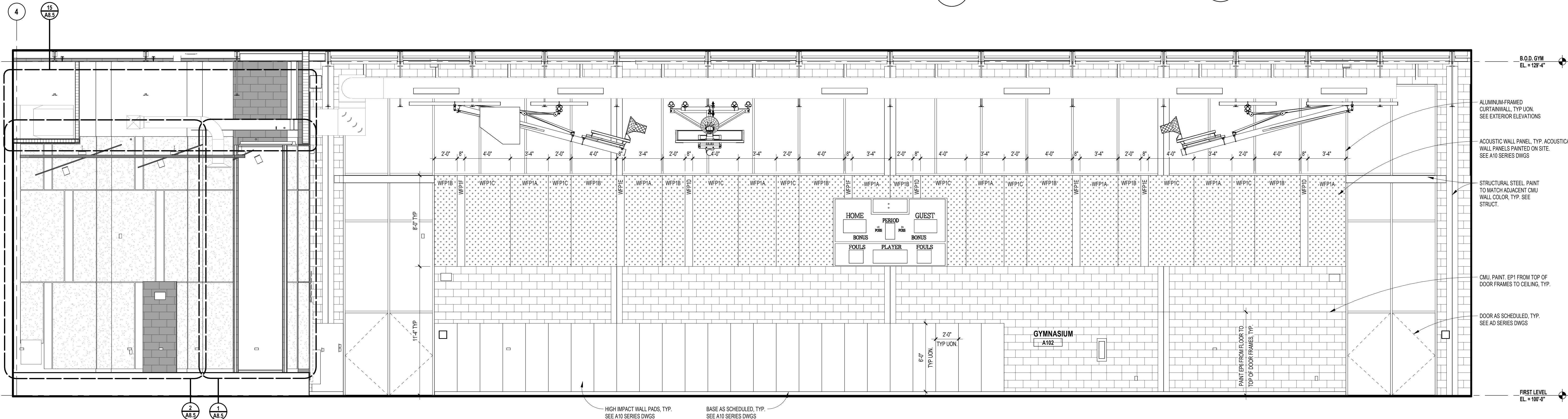
GLAZING TYPES	
GL-2	1/4" (6mm) CLEAR TEMPERED MONOLITHIC GLASS
GL-4	1/4" (6mm) CLEAR HEAT-STRENGTHENED LAMINATED GLASS
GL-8	1/4" (6mm) CLEAR HEAT-STRENGTHENED LAMINATED GLASS w/ TINTED INTERLAYER
GL-13	1" (25mm) CLEAR TEMPERED INSULATING GLASS (LOW-E)
GL-16	1" (25mm) CLEAR TEMPERED INSULATING SPANDREL GLASS
GL-19	1" (25mm) CLEAR TEMPERED INSULATION GLASS (LOW-E) w/ APPLIED FRIT
GL-21	1" (25mm) CLEAR HEAT-STRENGTHENED LAMINATED INSULATING GLASS
GL-23	1" (25mm) CLEAR TEMPERED w/ TINTED INTERLAYER LAMINATED INSULATING GLASS (LOW-E)
FPGL-2	3/4" (19mm) FIRE PROTECTIVE GLAZING (45 MIN)
FRGL-4	1 1/8" (29mm) FIRE RESISTIVE GLAZING (60 MIN, ASTM E119)
SSGL1	MONOLITHIC SECURITY GLAZING
SSGL2	INSULATED SECURITY GLAZING



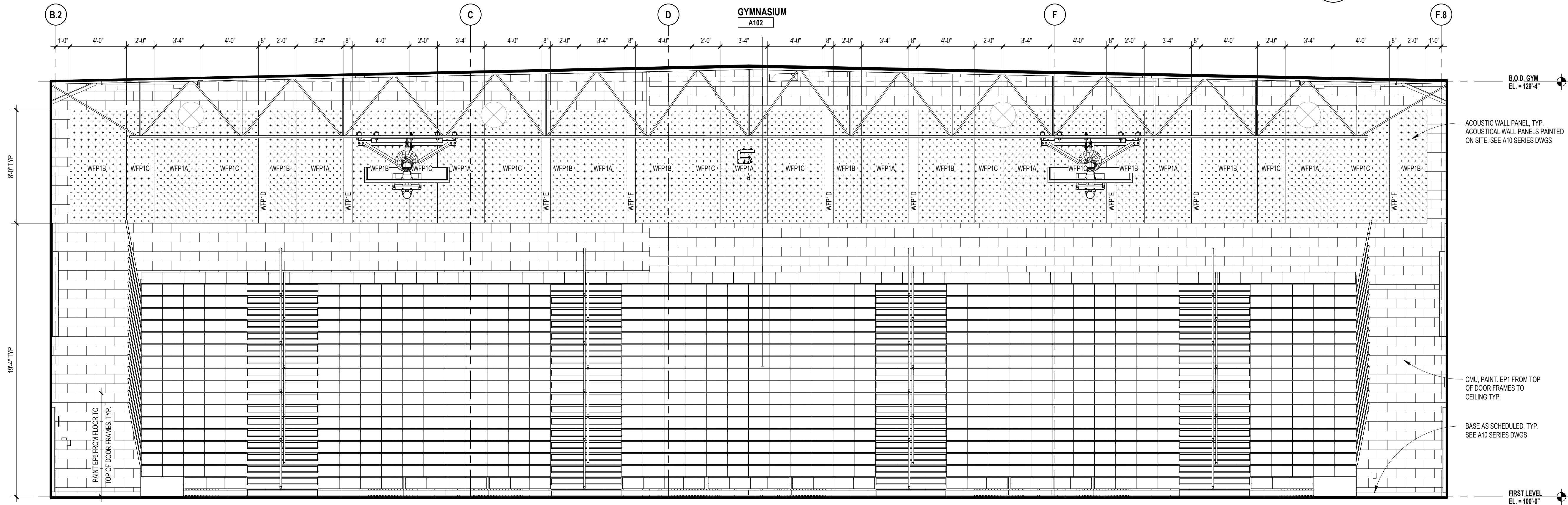
4
A1.1A
INTERIOR ELEVATION - GYM CORRIDOR
SCALE: 1/4" = 1'-0"



3
A6.1
INTERIOR ELEVATION - TOILET
SCALE: 1/4" = 1'-0"



2
A1.1A
INTERIOR ELEVATION - GYMNASIUM
SCALE: 1/4" = 1'-0"



1
A1.1A
INTERIOR ELEVATION - GYMNASIUM
SCALE: 1/4" = 1'-0"



TmP
architecture

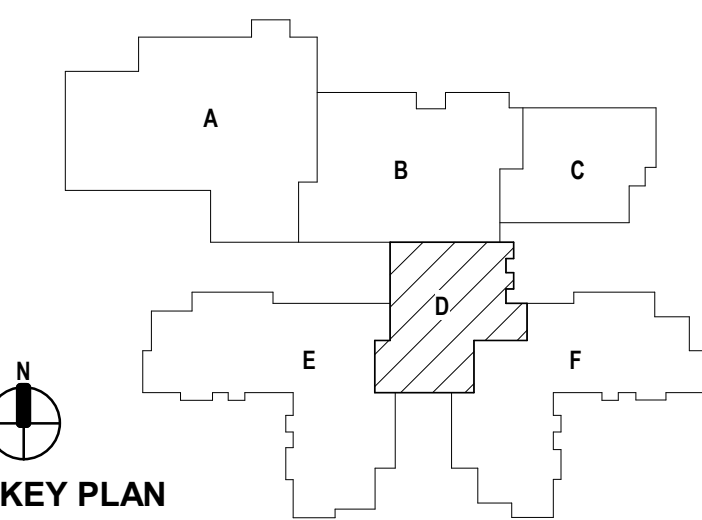
TMPARCHITECTURE INC

1191 WEST SQUARE LAKE ROAD
BLOOMFIELD HILLS - MICHIGAN - 48302
PH - 248.338.4561 FX - 248.338.0223
EM - INFO@TMP-ARCHITECTURE.COM

consultant

Troy School District
Troy, Michigan

DRAWING TITLE
Interior Elevations



issue date

[illegible]

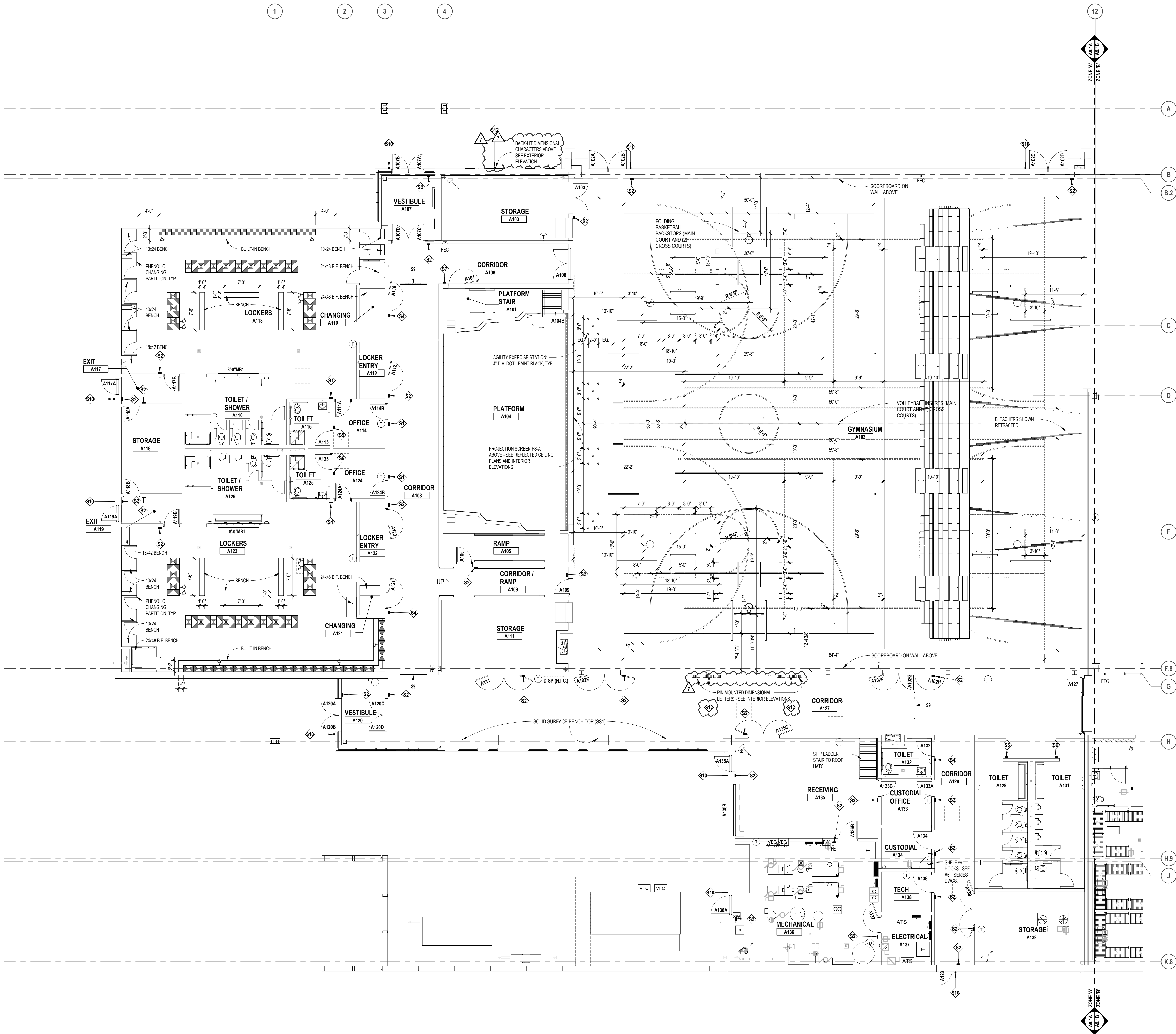
project no.
22102

drawing no.
A7.6



Autodesk Docs://22102_Troy Smith MS/22102-ARCH-22.rvt
1/13/2025 10:51:17 AM

Autodesk Docs/22102_Troy Smith MS22102-ARCH-22.rvt
1/13/2025 10:51:35 AM



FIRST LEVEL CASEWORK AND EQUIPMENT PLAN - ZONE 'A'

SCALE: 1/8" = 1'-0"

LEGEND

DISPLAY (BY OTHERS) - WALL OR SUSPENDED MOUNT (BY OTHERS)

FES = FIRE EXTINGUISHER IN CABINET (FEC)

FE = FIRE EXTINGUISHER ON WALL BRACKET (FE)

CG1 = 7'-0" HIGH (UON) SURFACE MOUNT CORNER GUARD

VISUAL DISPLAY BOARD NOTES

TYPE OF BOARD

6'-0" MB1

WIDTH OF BOARD/STRIP

HEIGHT OF ALL BOARDS ARE 4'-0" (UON)

NOTES:

1. MB1 = MARKERBOARD
2. MB2 = TACKBOARD
3. TS = TACK STRIP
4. DSP = DISPLAY (BY OTHERS)
5. MOUNTING HEIGHTS (UON): MB1/TS = 3'-4" AFF TO BOTTOM
6. MAP RAILS SHALL BE CONTINUOUS OVER MARKERBOARDS.
7. ALL MARKERBOARDS SHALL BE PROVIDED WITH TRAYS & MAP RAILS.
8. LEGEND: MB1 = PORCELAIN ENAMEL STEEL HORIZONTAL ORIENTATION MB2 = PORCELAIN ENAMEL STEEL VERTICAL ORIENTATION MB3 = MAGNETIC GLASS

CASEWORK NOTES

1. ALL PREFABRICATED CABINETS INDICATED ARE BASED ON TMI STORAGE SYSTEMS CORPORATION PRODUCTS. REFER TO TMI CATALOG FOR TYPICAL NUMBERING FORMAT.
2. ALL TMI CABINETS ARE DESIGNATED USING THE TYPICAL TMI ELEVEN (11) DIGIT NOTATION SYSTEM. THE FIRST FIVE DIGITS ARE THE MODEL NUMBER FOLLOWED BY THREE SETS OF TWO DIGIT NUMBERS FOR THE WIDTH, HEIGHT AND DEPTH.
3. WIDTH, HEIGHT AND DEPTH OF PREFABRICATED CABINETS IS INDICATED IN INCHES UNLESS NOTED OTHERWISE. MODEL DIMENSIONS ARE NOMINAL UNLESS SPECIFICALLY NOTED. "00000-00-00-00" INDICATES MODIFIED CASEWORK.
4. PROVIDE PLASTIC LAMINATE COUNTERTOPS (WITH BACKEND SPLASHES) AT ALL BASE CABINETS. RADIUS ALL OUTSIDE CORNERS (U.O.N.)
5. ALL EXPOSED SURFACES OF CASEWORK TO BE FINISHED, TYPICAL.
6. WALL CABINETS (OVER COUNTERS) ARE TYPICALLY MOUNTED AT 7'-4" AFF TO TOP (UON).
7. PROVIDE FINISHED END PANELS ON ALL EXPOSED CASEWORK ENDS.
8. PROVIDE RESTRAINING CHAINS ON ALL END BASE AND WALL CABINET DOORS WHICH OPEN AGAINST PERPENDICULAR WALLS.
9. WHERE CASEWORK IS HELD AWAY FROM WALLS, TO FLUSH-OUT WITH ADJACENT CABINETS, SCRIBE END/FILLER PANELS TO WALLS.
10. PROVIDE FILLER PANELS WHERE SHOWN AND/OR OTHERWISE REQUIRED FOR A COMPLETE INSTALLATION.
11. PROVIDE LOCKS AT ALL CABINET DOORS AND DRAWERS (U.O.N.)
12. MODIFY SINK BASE CABINETS AS REQUIRED TO ACCOMMODATE OVERSIZED SINKS (SEE MECHANICAL FOR OVERSIZED SINK LOCATIONS).
13. WHERE BF 34" HIGH BASE CABINETS ARE INDICATED, MODIFY CABINET CONSTRUCTION BY REDUCING THE HEIGHT OF ALL COMPARTMENTS EQUALLY (INDICATE ON SHOP DWGS.)
14. PROVIDE INTERMEDIATE PLASTIC LAMINATE CLAD SUPPORT PANELS @ 4'-0" OC MAXIMUM AT ALL UNSUPPORTED COUNTER TOPS (UON).
15. PROVIDE GROMMETS AT ALL COUNTERS WITH KNEESPACES, WHERE POWERDATA OUTLETS ARE LOCATED BELOW (REFER TO ELECTRICAL DRAWINGS FOR LOCATIONS). UON. PROVIDE (1) ONE GROMMET PER KNEESPACE (UON). FINAL LOCATIONS WILL BE MARKED-UP ON THE SHOP DRAWING SUBMITTAL.
16. PROVIDE MOISTURE RESISTANT PARTICLE BOARD AT SINK BASE, COUNTERTOP, AND SPLASH WITHIN 18" OF SINK.
17. SEE MECHANICAL DRAWINGS FOR POINT OF USE ACID NEUTRALIZATION TANKS.
18. ALL TYPICAL MUSIC WING CABINETS INDICATED ARE BASED ON WENGER CORPORATION PRODUCTS. REFER TO WENGER CATALOG FOR TYPICAL NUMBERING FORMAT.
19. ALL WENGER CABINETRY IS DESIGNATED USING THE PREFIX "W-" AND THEN THE WENGER NUMBER SYSTEM.
20. NOT USED.

LOCKER LEGEND

TYPE L-1

- SINGLE-TIER STANDARD LOCKERS (12" X 15" X 72" HIGH) VENTILATED, ON METAL "Z" BASE
- SINGLE-TIER ADA ACCESSIBLE LOCKERS (12" X 15" X 72" HIGH) VENTILATED, ON METAL "Z" BASE

TYPE L-2

- DOUBLE-TIER CORRIDOR LOCKERS (12" X 15" X 60" HIGH) VENTILATED, ON METAL "Z" BASE
- DOUBLE-TIER ADA ACCESSIBLE CORRIDOR LOCKERS (12" X 15" X 60" HIGH) VENTILATED, ON METAL "Z" BASE

TYPE L-3

- SINGLE-TIER STANDARD LOCKERS (12" X 15" X 30" HIGH) VENTILATED, ON METAL "Z" BASE
- SINGLE-TIER ADA ACCESSIBLE STANDARD LOCKERS (12" X 15" X 30" HIGH) VENTILATED, ON METAL "Z" BASE

TYPE L-4

- SINGLE-TIER ATHLETIC LOCKERS (15" X 15" X 72" HIGH), VENTILATED, ON 4" TALL CMU BASE
- SINGLE-TIER ADA ACCESSIBLE ATHLETIC LOCKERS (15" X 15" X 72" HIGH) VENTILATED, ON 4" TALL CMU/CONCRETE BASE (-/-)

TYPE L-5

- FIVE-TIER ATHLETIC LOCKERS (15" X 15" X 60" HIGH), VENTILATED, ON 4" TALL CMU/CONCRETE BASE
- FIVE-TIER ADA ACCESSIBLE ATHLETIC LOCKERS (15" X 15" X 60" HIGH) VENTILATED, ON 4" TALL CMU BASE

TYPE L-6

- DOUBLE-TIER ATHLETIC LOCKERS (15" X 15" X 60" HIGH), VENTILATED, ON 18" TALL CMU BASE
- DOUBLE-TIER ADA ACCESSIBLE ATHLETIC LOCKERS (15" X 15" X 60" HIGH) VENTILATED, ON 18" TALL CMU BASE

TYPE L-7

- DOUBLE-TIER ATHLETIC LOCKERS (24" X 15" X 72" HIGH), VENTILATED, ON 18" TALL CMU BASE
- DOUBLE-TIER ADA ACCESSIBLE ATHLETIC LOCKERS (24" X 15" X 72" HIGH) VENTILATED, ON 18" TALL CMU BASE

LOCKER NOTES:

1. PROVIDE CONTINUOUS SLOPED TOPS AT ALL LOCKERS (UON)
2. PROVIDE FILLER PIECES AT ENDS & CORNERS AS REQUIRED
3. SIZES INDICATED ABOVE REFER TO WIDTH x DEPTH x HEIGHT
4. LOCKERS TAGGED WITH "A" ARE ACCENT COLOR LOCKERS. SEE SPECIFICATIONS.

PROJECTION SCREEN SCHEDULE

PS-A 22'-0" x 14'-9" ELECTRICALLY OPERATED, WALL MOUNTED

PS-B 9'-3" x 6'-0-1/2" FIXED, WALL MOUNTED

PC-C 16'-6" x 10'-4" ELECTRICALLY OPERATED, RECESSED MOUNTED

NOTES:

1. REFER TO ELECTRICAL PLANS AND SPECIFICATIONS FOR ADDITIONAL INFORMATION.

INTERIOR SIGNAGE

THIS IS AN INTERIOR SIGNAGE IDENTIFICATION. REFER TO SPECIFICATIONS FOR INTERIOR SIGNAGE TYPE AND SCHEDULED INFORMATION



TMP ARCHITECTURE INC
1191 WEST SQUARE LAKE ROAD
BLOOMFIELD HILLS - MICHIGAN 48302
PH: 248.338.4491 FX: 248.338.9223
EM: INFO@TMP-ARCHITECTURE.COM

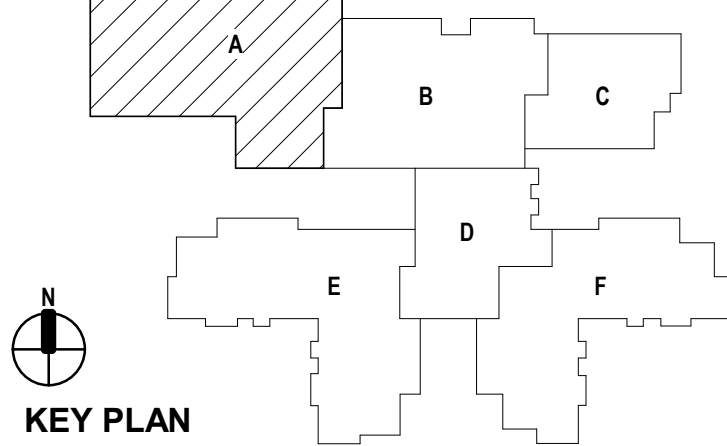
registration seal

consultant

PROJECT TITLE
NEW SMITH MIDDLE SCHOOL
Bid Package No. 03B

Troy School District
Troy, Michigan

DRAWING TITLE
First Level Casework & Equipment Plan - Zone 'A'



issue dates

01-13-2025 BULLETIN NO. 7
10-31-2024 CONSTRUCTION SET
07-16-2024 ADDENDUM NO. 3 (NLR)
07-12-2024 ADDENDUM NO. 2
06-16-2024 CONSTRUCTION DOCUMENTS

date: issued for:

drawn do

checked jw

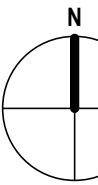
approved dl

project no.

22102

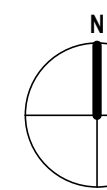
drawing no.

A9.1A


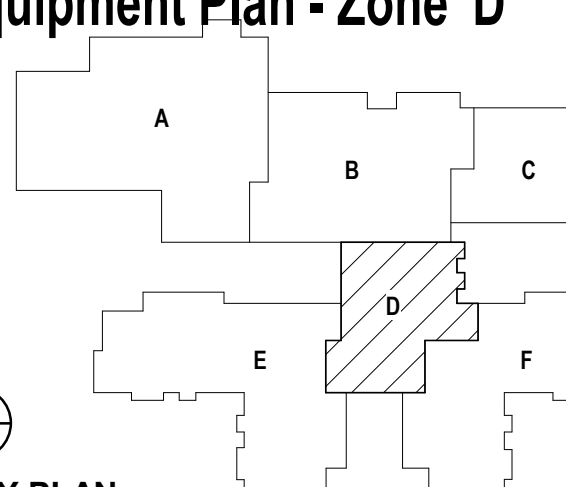


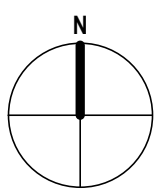
SCALE: 1/8" = 1'-0"

A9.1B



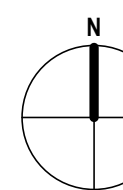
SCALE: 1/8" = 1'-0"

<div><p>TMP architecture</p></div> <div><p>T M P a R C H I T E C T U R E I N C</p><p>1191 WEST SQUARE LAKE ROAD BLOOMFIELD HILLS - MICHIGAN - 48302 PH - 248.338.4561 FX - 248.338.9223 EM - INFO@TMP-ARCHITECTURE.COM</p></div>															
registration seal															
consultant															
<div>PROJECT TITLE</div> <div>NEW SMITH MIDDLE SCHOOL</div> <div>Bid Package No. 03B</div> <div>Troy School District Troy, Michigan</div>															
<div>DRAWING TITLE</div> <div>First Level Casework & Equipment Plan - Zone 'D'</div> <div><p>KEY PLAN</p></div>															
<div>issue dates</div> <table><tr><td>01-13-2025</td><td>BULLETIN NO. 7</td></tr><tr><td>10-31-2024</td><td>CONSTRUCTION SET</td></tr><tr><td>07-16-2024</td><td>ADDENDUM NO. 3 (N.R.)</td></tr><tr><td>06-18-2024</td><td>CONSTRUCTION DOCUMENTS</td></tr></table> <div>date: issued for:</div> <table><tr><td>drawn</td><td>do</td></tr><tr><td>checked</td><td>jw</td></tr><tr><td>approved</td><td>dl</td></tr></table>		01-13-2025	BULLETIN NO. 7	10-31-2024	CONSTRUCTION SET	07-16-2024	ADDENDUM NO. 3 (N.R.)	06-18-2024	CONSTRUCTION DOCUMENTS	drawn	do	checked	jw	approved	dl
01-13-2025	BULLETIN NO. 7														
10-31-2024	CONSTRUCTION SET														
07-16-2024	ADDENDUM NO. 3 (N.R.)														
06-18-2024	CONSTRUCTION DOCUMENTS														
drawn	do														
checked	jw														
approved	dl														
<div>project no.</div> <div>22102</div> <div>drawing no.</div> <div>A9.1D</div>															



SCALE: 1/8" = 1'-0"

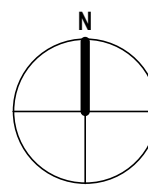
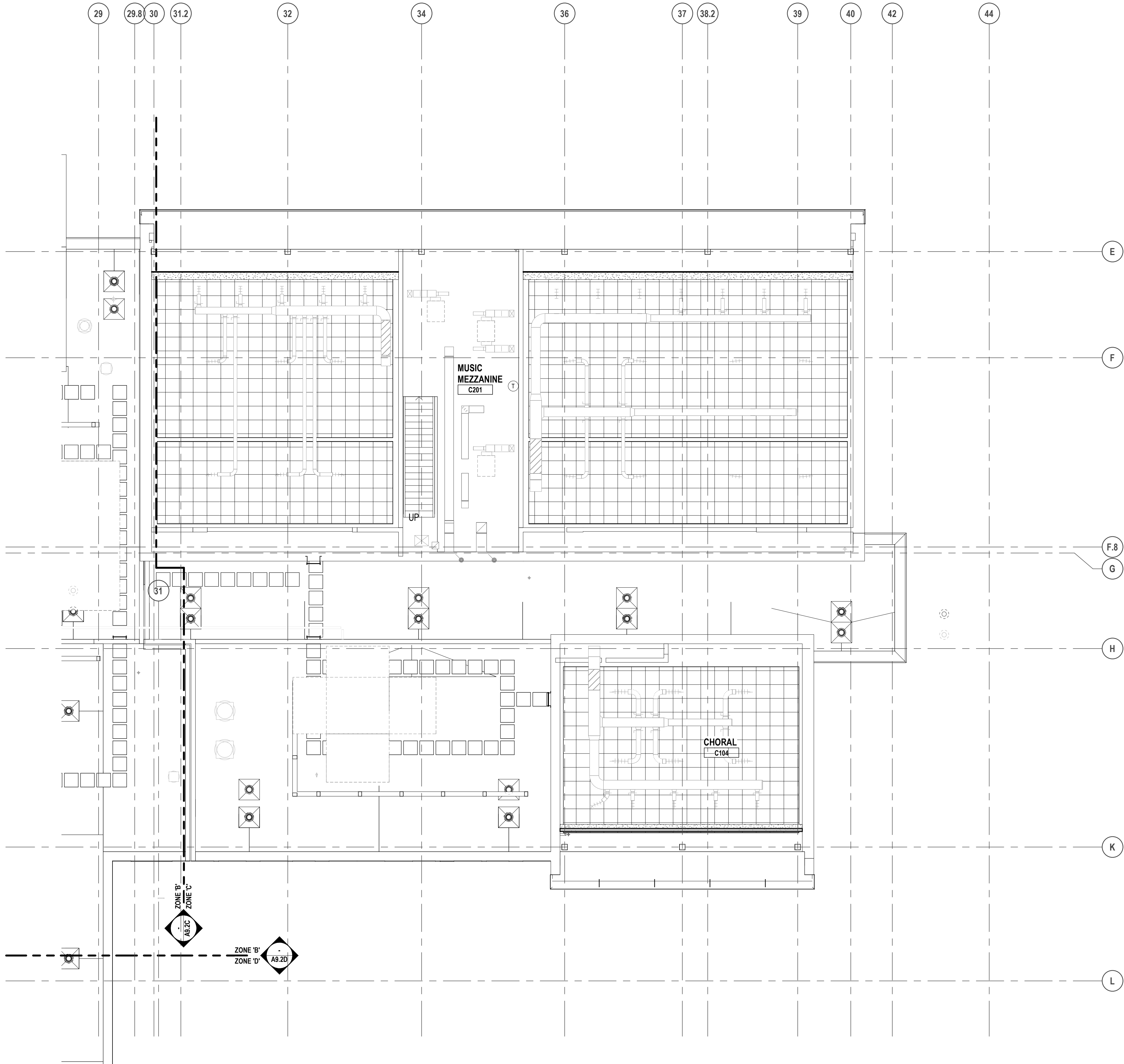
[illegible]



SCALE: 1/8" = 1'-0"

<div><p>T M P a R C H I T E C T U R E</p></div> <div><p>T M P a R C H I T E C T U R E I N C</p><p>1191 WEST SQUARE LAKE ROAD BLOOMFIELD HILLS - MICHIGAN - 48302 PH - 248.338.4561 FX - 248.338.0223 EM - INFO@TMP-ARCHITECTURE.COM</p></div>															
registration seal															
consultant															
<div>PROJECT TITLE</div> <div>NEW SMITH MIDDLE SCHOOL</div> <div>Bid Package No. 03B</div> <div>Troy School District Troy, Michigan</div>															
<div>DRAWING TITLE</div> <div>First Level Casework & Equipment Plan - Zone 'F'</div> <div><p>KEY PLAN</p></div>															
<div>issue dates</div> <table><tr><td>01-13-2025</td><td>BULLETIN NO. 7</td></tr><tr><td>10-31-2024</td><td>CONSTRUCTION SET</td></tr><tr><td>07-16-2024</td><td>ADDENDUM NO. 3 (N.R.)</td></tr><tr><td>06-18-2024</td><td>CONSTRUCTION DOCUMENTS</td></tr></table> <div>date: issued for:</div> <table><tr><td>drawn</td><td>do</td></tr><tr><td>checked</td><td>jw</td></tr><tr><td>approved</td><td>dl</td></tr></table>		01-13-2025	BULLETIN NO. 7	10-31-2024	CONSTRUCTION SET	07-16-2024	ADDENDUM NO. 3 (N.R.)	06-18-2024	CONSTRUCTION DOCUMENTS	drawn	do	checked	jw	approved	dl
01-13-2025	BULLETIN NO. 7														
10-31-2024	CONSTRUCTION SET														
07-16-2024	ADDENDUM NO. 3 (N.R.)														
06-18-2024	CONSTRUCTION DOCUMENTS														
drawn	do														
checked	jw														
approved	dl														
<div>project no.</div> <div>22102</div> <div>drawing no.</div> <div>A9.1F</div>															

Autodesk Docs/22102_Troy Smith MS22102-ARCH-22.rvt
1/13/2025 10:53:21 AM



MEZZANINE LEVEL CASEWORK & EQUIPMENT PLAN - ZONE 'C'
SCALE: 1/8" = 1'-0"

FES

FEC

FE

CG1

DISPLAY (BY OTHERS) - WALL OR SUSPENDED MOUNT (BY OTHERS)

FIRE EXTINGUISHER IN CABINET (FEC)

FIRE EXTINGUISHER ON WALL BRACKET (FE)

7'-0" HIGH (UON) SURFACE MOUNT CORNER GUARD

6'-0" MB1

WIDTH OF BOARD/STRIP

HEIGHT OF ALL BOARDS ARE 4'-0" (UON)

TYPE OF BOARD

NOTES:

1. MB1 = MARKERBOARD
TB = TACKBOARD
TS = TACK STRIP
DSP = DISPLAY (BY OTHERS)

2. MOUNTING HEIGHTS (UON):
MB/TB = 3'-4" AFF TO BOTTOM

3. MAP RAILS SHALL BE CONTINUOUS OVER MARKERBOARDS.

4. ALL MARKERBOARDS SHALL BE PROVIDED WITH TRAYS & MAP RAILS.

5. LEGEND:
MB1 = PORCELAIN ENAMEL STEEL HORIZONTAL ORIENTATION
MB2 = PORCELAIN ENAMEL STEEL VERTICAL ORIENTATION
MB3 = MAGNETIC GLASS

CASEWORK NOTES

1. ALL PREFABRICATED CABINETS INDICATED ARE BASED ON TMI STORAGE SYSTEMS CORPORATION PRODUCTS. REFER TO TMI CATALOG FOR TYPICAL NUMBERING FORMAT.

2. ALL TMI CABINETS ARE DESIGNATED USING THE TYPICAL TMI ELEVEN (11) DIGIT NOTATION SYSTEM. THE FIRST FIVE DIGITS ARE THE MODEL NUMBER FOLLOWED BY THREE SETS OF TWO DIGIT NUMBERS FOR THE WIDTH, HEIGHT AND DEPTH.

3. WIDTH, HEIGHT AND DEPTH OF PREFABRICATED CABINETS IS INDICATED IN INCHES UNLESS NOTED OTHERWISE. MODEL DIMENSIONS ARE NOMINAL UNLESS SPECIFICALLY NOTED. "0000-00-00-00" INDICATES MODIFIED CASEWORK.

4. PROVIDE PLASTIC LAMINATE COUNTERTOPS (WITH BACKEND SPLASHES) AT ALL BASE CABINETS. RADIUS ALL OUTSIDE CORNERS (U.O.N.)

5. ALL EXPOSED SURFACES OF CASEWORK TO BE FINISHED, TYPICAL.

6. WALL CABINETS (OVER COUNTERS) ARE TYPICALLY MOUNTED AT 7'-4" AFF TO TOP (UON).

7. PROVIDE FINISHED END PANELS ON ALL EXPOSED CASEWORK ENDS.

8. PROVIDE RESTRAINING CHAINS ON ALL END BASE AND WALL CABINET DOORS WHICH OPEN AGAINST PERPENDICULAR WALLS.

9. WHERE CASEWORK IS HELD AWAY FROM WALLS, TO FLUSH-OUT WITH ADJACENT CABINETS, SCRIBE END/FILLER PANELS TO WALLS.

10. PROVIDE FILLER PANELS WHERE SHOWN AND/OR OTHERWISE REQUIRED FOR A COMPLETE INSTALLATION.

11. PROVIDE LOCKS AT ALL CABINET DOORS AND DRAWERS (U.O.N.)

12. MODIFY SINK BASE CABINETS AS REQUIRED TO ACCOMMODATE OVERSIZED SINKS (SEE MECHANICAL FOR OVERSIZED SINK LOCATIONS).

13. WHERE BF 34" HIGH BASE CABINETS ARE INDICATED, MODIFY CABINET CONSTRUCTION BY REDUCING THE HEIGHT OF ALL COMPARTMENTS EQUALLY (INDICATE ON SHOP DWGS.)

14. PROVIDE INTERMEDIATE PLASTIC LAMINATE CLAD SUPPORT PANELS @ 4'-0" OC MAXIMUM AT ALL UNSUPPORTED COUNTER TOPS (UON).

15. PROVIDE GROMMETS AT ALL COUNTERS WITH KNEESPACES, WHERE POWER/DATA OUTLETS ARE LOCATED BELOW (REFER TO ELECTRICAL DRAWINGS FOR LOCATIONS). UON. PROVIDE (1) ONE GROMMET PER KNEESPACE (UON). FINAL LOCATIONS WILL BE MARKED-UP ON THE SHOP DRAWING SUBMITTAL.

16. PROVIDE MOISTURE RESISTANT PARTICLE BOARD AT SINK BASE, COUNTERTOP, AND SPLASH WITHIN 18" OF SINK.

17. SEE MECHANICAL DRAWINGS FOR POINT OF USE ACID NEUTRALIZATION TANKS.

18. ALL TYPICAL MUSIC WING CABINETS INDICATED ARE BASED ON WENGER CORPORATION PRODUCTS. REFER TO WENGER CATALOG FOR TYPICAL NUMBERING FORMAT.

19. ALL WENGER CABINETRY IS DESIGNATED USING THE PREFIX "W-" AND THEN THE WENGER NUMBER SYSTEM.

20. NOT USED.

LOCKER LEGEND

TYPE L-1

TYPE L-2

TYPE L-3

TYPE L-4

TYPE L-5

TYPE L-6

TYPE L-7

SINGLE-TIER STANDARD LOCKERS (12" X 15" X 72" HIGH) VENTILATED, ON METAL "Z" BASE

SINGLE-TIER ADA ACCESSIBLE LOCKERS (12" X 15" X 72" HIGH) VENTILATED, ON METAL "Z" BASE

DOUBLE-TIER CORRIDOR LOCKERS (12" X 15" X 60" HIGH) VENTILATED, ON METAL "Z" BASE

DOUBLE-TIER ADA ACCESSIBLE CORRIDOR LOCKERS (12" X 15" X 60" HIGH) VENTILATED, ON METAL "Z" BASE

SINGLE-TIER STANDARD LOCKERS (12" X 15" X 30" HIGH) VENTILATED, ON METAL "Z" BASE

SINGLE-TIER ADA ACCESSIBLE STANDARD LOCKERS (12" X 15" X 30" HIGH) VENTILATED, ON METAL "Z" BASE

SINGLE-TIER ATHLETIC LOCKERS (15" X 15" X 72" HIGH), VENTILATED, ON 4" TALL CMU BASE

SINGLE-TIER ADA ACCESSIBLE ATHLETIC LOCKERS (15" X 15" X 72" HIGH) VENTILATED, ON 4" TALL CMU/CONCRETE BASE (- / -)

FIVE-TIER ATHLETIC LOCKERS (15" X 15" X 60" HIGH), VENTILATED, ON 4" TALL CMU/CONCRETE BASE

FIVE-TIER ADA ACCESSIBLE ATHLETIC LOCKERS (15" X 15" X 60" HIGH) VENTILATED, ON 4" TALL CMU BASE

DOUBLE-TIER ATHLETIC LOCKERS (15" X 15" X 60" HIGH), VENTILATED, ON 18" TALL CMU BASE

DOUBLE-TIER ADA ACCESSIBLE ATHLETIC LOCKERS (15" X 15" X 60" HIGH) VENTILATED, ON 18" TALL CMU BASE

DOUBLE-TIER ATHLETIC LOCKERS (24" X 15" X 72" HIGH), VENTILATED, ON 18" TALL CMU BASE

DOUBLE-TIER ADA ACCESSIBLE ATHLETIC LOCKERS (24" X 15" X 72" HIGH) VENTILATED, ON 18" TALL CMU BASE

LOCKER NOTES:

1. PROVIDE CONTINUOUS SLOPED TOPS AT ALL LOCKERS (UON)

2. PROVIDE FILLER PIECES AT ENDS & CORNERS AS REQUIRED

3. SIZES INDICATED ABOVE REFER TO WIDTH x DEPTH x HEIGHT

4. LOCKERS TAGGED WITH "A" ARE ACCENT COLOR LOCKERS. SEE SPECIFICATIONS.

PROJECTION SCREEN SCHEDULE

PS-A

22'-0" x 14'-0"

ELECTRICALLY OPERATED, WALL MOUNTED

PS-B

9'-0" x 6'-0-1/2"

FIXED, WALL MOUNTED

PC-C

18'-0" x 10'-4"

ELECTRICALLY OPERATED, RECESSED MOUNTED

NOTES:

1. REFER TO ELECTRICAL PLANS AND SPECIFICATIONS FOR ADDITIONAL INFORMATION.

INTERIOR SIGNAGE

THIS IS AN INTERIOR SIGNAGE IDENTIFICATION. REFER TO SPECIFICATIONS FOR INTERIOR SIGNAGE TYPE AND SCHEDULED INFORMATION



TMP ARCHITECTURE INC
1191 WEST SQUARE LAKE ROAD
BLOOMFIELD HILLS • MICHIGAN • 48302
PH: 248.338-4491 FX: 248.338-9223
EM: INFO@TMP-ARCHITECTURE.COM

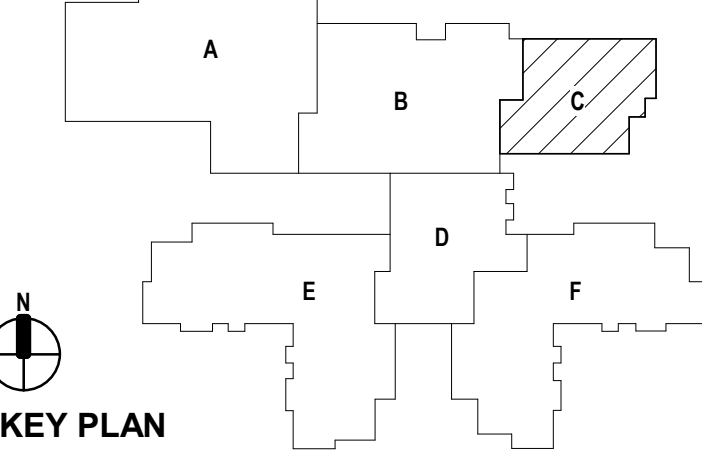
registration seal

consultant

PROJECT TITLE
NEW SMITH MIDDLE SCHOOL
Bid Package No. 03B

Troy School District
Troy, Michigan

DRAWING TITLE
Mezzanine Level Casework & Equipment Plan - Zone 'C'



issue dates

01-13-2025	BULLETIN NO. 7
10-31-2024	CONSTRUCTION SET
07-16-2024	ADDENDUM NO. 3 (N.R.)
06-16-2024	CONSTRUCTION DOCUMENTS

date:	issued for:
drawn	do
checked	jw
approved	dl

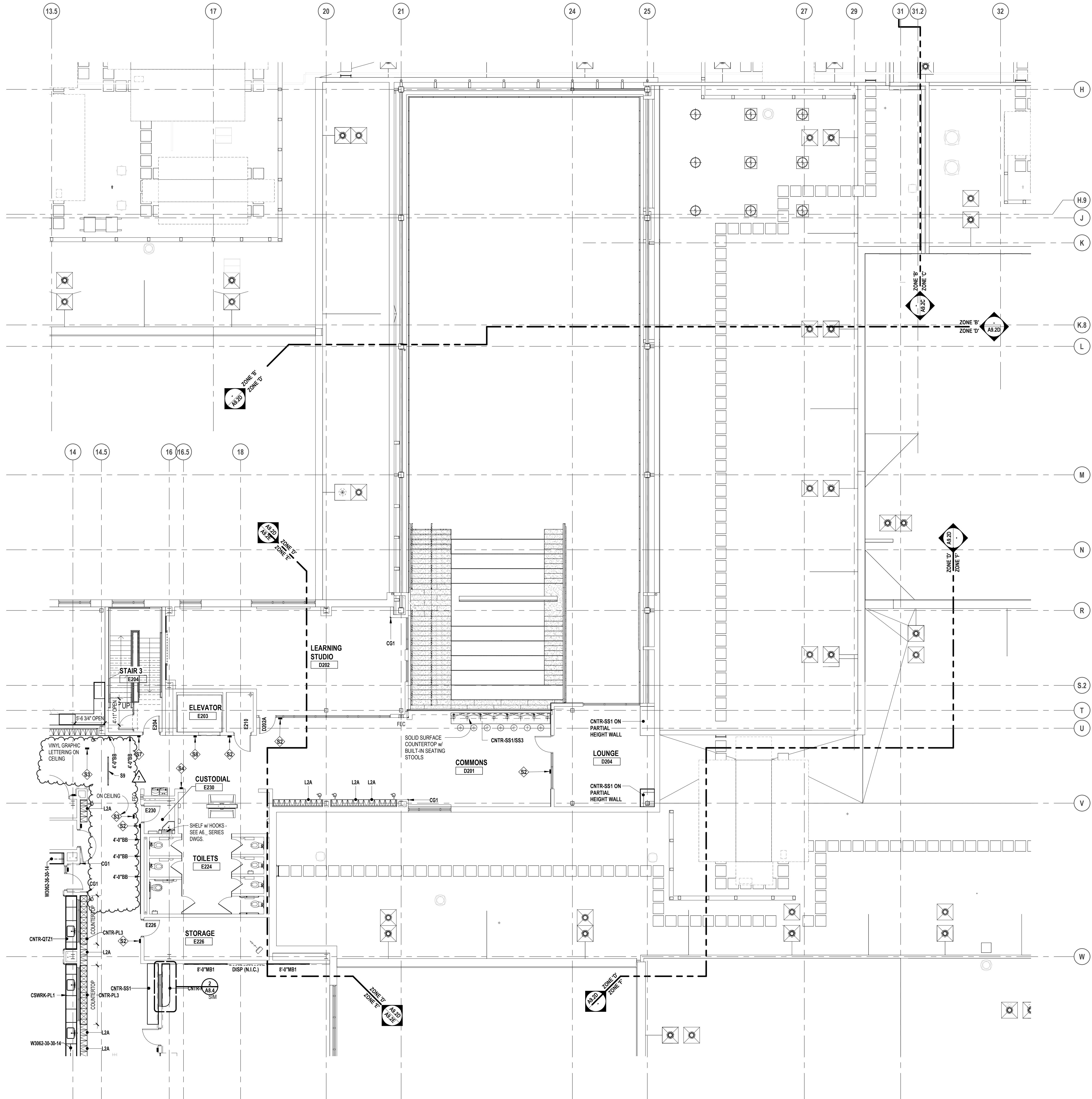
project no.

22102

drawing no.

A9.2C

Autodesk Docs/22102_Troy Smith MS22102-ARCH-22.rvt
1/13/2025 10:53:33 AM



LEGEND

FES

FEC

FE

CG1

DISPLAY (BY OTHERS) - WALL OR SUSPENDED MOUNT (BY OTHERS)

FIRE EXTINGUISHER IN CABINET (FEC)

FIRE EXTINGUISHER ON WALL BRACKET (FE)

7'-0" HIGH (UON) SURFACE MOUNT CORNER GUARD

VISUAL DISPLAY BOARD NOTES

TYPE OF BOARD

6'-0" MB1

WIDTH OF BOARD/STRIP

HEIGHT OF ALL BOARDS ARE 4'-0" (UON)

NOTES:

1. MB1 = MARKERBOARD
TS = TACKBOARD
TS = TACK STRIP
DISP = DISPLAY (BY OTHERS)

2. MOUNTING HEIGHTS (UON):
MB/TS = 3'-4" AFF TO BOTTOM

3. MAP RAILS SHALL BE CONTINUOUS OVER MARKERBOARDS.

4. ALL MARKERBOARDS SHALL BE PROVIDED WITH TRAYS & MAP RAILS.

5. LEGEND:
MB1 = PORCELAIN ENAMEL STEEL HORIZONTAL ORIENTATION
MB2 = PORCELAIN ENAMEL STEEL VERTICAL ORIENTATION
MB3 = MAGNETIC GLASS

CASEWORK NOTES

1. ALL PREFABRICATED CABINETS INDICATED ARE BASED ON TMI STORAGE SYSTEMS CORPORATION PRODUCTS. REFER TO TMI CATALOG FOR TYPICAL NUMBERING FORMAT.

2. ALL TMI CABINETS ARE DESIGNATED USING THE TYPICAL TMI ELEVEN (11) DIGIT NOTATION SYSTEM. THE FIRST FIVE DIGITS ARE THE MODEL NUMBER FOLLOWED BY THREE SETS OF TWO DIGIT NUMBERS FOR THE WIDTH, HEIGHT AND DEPTH.

3. WIDTH, HEIGHT AND DEPTH OF PREFABRICATED CABINETS IS INDICATED IN INCHES UNLESS NOTED OTHERWISE. MODEL DIMENSIONS ARE NOMINAL UNLESS SPECIFICALLY NOTED. "00000-00-00-00" INDICATES MODIFIED CASEWORK.

4. PROVIDE PLASTIC LAMINATE COUNTERTOPS (WITH BACKEND SPLASHES) AT ALL BASE CABINETS. RADIUS ALL OUTSIDE CORNERS (U.O.N.)

5. ALL EXPOSED SURFACES OF CASEWORK TO BE FINISHED, TYPICAL.

6. WALL CABINETS (OVER COUNTERS) ARE TYPICALLY MOUNTED AT 7'-4" AFF TO TOP (UON).

7. PROVIDE FINISHED END PANELS ON ALL EXPOSED CASEWORK ENDS.

8. PROVIDE RESTRAINING CHAINS ON ALL END BASE AND WALL CABINET DOORS WHICH OPEN AGAINST PERPENDICULAR WALLS.

9. WHERE CASEWORK IS HELD AWAY FROM WALLS, TO FLUSH-OUT WITH ADJACENT CABINETS, SCRIBE END/FILLER PANELS TO WALLS.

10. PROVIDE FILLER PANELS WHERE SHOWN AND/OR OTHERWISE REQUIRED FOR A COMPLETE INSTALLATION.

11. PROVIDE LOCKS AT ALL CABINET DOORS AND DRAWERS (U.O.N.)

12. MODIFY SINK BASE CABINETS AS REQUIRED TO ACCOMMODATE OVERSIZED SINKS (SEE MECHANICAL FOR OVERSIZED SINK LOCATIONS).

13. WHERE BF 34" HIGH BASE CABINETS ARE INDICATED, MODIFY CABINET CONSTRUCTION BY REDUCING THE HEIGHT OF ALL COMPARTMENTS EQUALLY (INDICATE ON SHOP DWGS.)

14. PROVIDE INTERMEDIATE PLASTIC LAMINATE CLAD SUPPORT PANELS @ 4'-0" OC MAXIMUM AT ALL UNSUPPORTED COUNTER TOPS (UON).

15. PROVIDE GROMMETS AT ALL COUNTERS WITH KNEESPACES, WHERE POWER/DATA OUTLETS ARE LOCATED BELOW (REFER TO ELECTRICAL DRAWINGS FOR LOCATIONS). UON. PROVIDE (1) ONE GROMMET PER KNEESPACE (UON). FINAL LOCATIONS(S) WILL BE MARKED-UP ON THE SHOP DRAWING SUBMITTAL.

16. PROVIDE MOISTURE RESISTANT PARTICLE BOARD AT SINK BASE, COUNTERTOP, AND SPLASH WITHIN 18" OF SINK.

17. SEE MECHANICAL DRAWINGS FOR POINT OF USE ACID NEUTRALIZATION TANKS.

18. ALL TYPICAL MUSIC WING CABINETS INDICATED ARE BASED ON WENGER CORPORATION PRODUCTS. REFER TO WENGER CATALOG FOR TYPICAL NUMBERING FORMAT.

19. ALL WENGER CABINETRY IS DESIGNATED USING THE PREFIX "W-" AND THEN THE WENGER NUMBER SYSTEM.

20. NOT USED.

LOCKER LEGEND

TYPE L-1

SINGLE-TIER STANDARD LOCKERS (12" X 15" X 72" HIGH) VENTILATED, ON METAL "Z" BASE

SINGLE-TIER ADA ACCESSIBLE LOCKERS (12" X 15" X 72" HIGH) VENTILATED, ON METAL "Z" BASE

TYPE L-2

DOUBLE-TIER CORRIDOR LOCKERS (12" X 15" X 60" HIGH) VENTILATED, ON METAL "Z" BASE

DOUBLE-TIER ADA ACCESSIBLE CORRIDOR LOCKERS (12" X 15" X 60" HIGH) VENTILATED, ON METAL "Z" BASE

TYPE L-3

SINGLE-TIER STANDARD LOCKERS (12" X 15" X 30" HIGH) VENTILATED, ON METAL "Z" BASE

SINGLE-TIER ADA ACCESSIBLE STANDARD LOCKERS (12" X 15" X 30" HIGH) VENTILATED, ON METAL "Z" BASE

TYPE L-4

SINGLE-TIER ATHLETIC LOCKERS (15" X 15" X 72" HIGH), VENTILATED, ON 4" TALL CMU BASE

SINGLE-TIER ADA ACCESSIBLE ATHLETIC LOCKERS (15" X 15" X 72" HIGH) VENTILATED, ON 4" TALL CMU/CONCRETE BASE (- / -)

TYPE L-5

FIVE-TIER ATHLETIC LOCKERS (15" X 15" X 60" HIGH), VENTILATED, ON 4" TALL CMU/CONCRETE BASE

FIVE-TIER ADA ACCESSIBLE ATHLETIC LOCKERS (15" X 15" X 60" HIGH) VENTILATED, ON 4" TALL CMU BASE

TYPE L-6

DOUBLE-TIER ATHLETIC LOCKERS (15" X 15" X 60" HIGH), VENTILATED, ON 18" TALL CMU BASE

DOUBLE-TIER ADA ACCESSIBLE ATHLETIC LOCKERS (15" X 15" X 60" HIGH) VENTILATED, ON 18" TALL CMU BASE

TYPE L-7

DOUBLE-TIER ATHLETIC LOCKERS (24" X 15" X 72" HIGH), VENTILATED, ON 18" TALL CMU BASE

DOUBLE-TIER ADA ACCESSIBLE ATHLETIC LOCKERS (24" X 15" X 72" HIGH) VENTILATED, ON 18" TALL CMU BASE

LOCKER NOTES:

1. PROVIDE CONTINUOUS SLOPED TOPS AT ALL LOCKERS (UON)

2. PROVIDE FILLER PIECES AT ENDS & CORNERS AS REQUIRED

3. SIZES INDICATED ABOVE REFER TO WIDTH x DEPTH x HEIGHT

4. LOCKERS TAGGED WITH "A" ARE ACCENT COLOR LOCKERS. SEE SPECIFICATIONS.

PROJECTION SCREEN SCHEDULE

PSA

22'-4" x 14'-9"

ELECTRICALLY OPERATED, WALL MOUNTED

PS-B

9'-4" x 6'-0-1/2"

FIXED, WALL MOUNTED

PC-C

16'-6" x 10'-4"

ELECTRICALLY OPERATED, RECESSED MOUNTED

NOTES:

1. REFER TO ELECTRICAL PLANS AND SPECIFICATIONS FOR ADDITIONAL INFORMATION.

INTERIOR SIGNAGE

THIS IS AN INTERIOR SIGNAGE IDENTIFICATION. REFER TO SPECIFICATIONS FOR INTERIOR SIGNAGE TYPE AND SCHEDULED INFORMATION

TMP

architecture

TMP ARCHITECTURE INC

1191 WEST SQUARE LAKE ROAD
BLOOMFIELD HILLS • MICHIGAN 48302
PH: 248.338.4491 FX: 248.338.9223
EM: INF@TMP-ARCHITECTURE.COM

registration seal

consultant

PROJECT TITLE

**NEW SMITH
MIDDLE SCHOOL**

Bid Package No. 03B

Troy School District
Troy, Michigan

DRAWING TITLE

**Second Level Casework &
Equipment Plan - Zone 'D'**

N

KEY PLAN

A

B

C

D

E

F

issue dates

01-13-2025	BULLETIN NO. 7
10-31-2024	CONSTRUCTION SET
07-23-2024	ADDENDUM NO. 4
07-16-2024	ADDENDUM NO. 3
06-16-2024	CONSTRUCTION DOCUMENTS

date:

issued for:

drawn

do

checked

jw

approved

dl

project no.

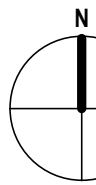
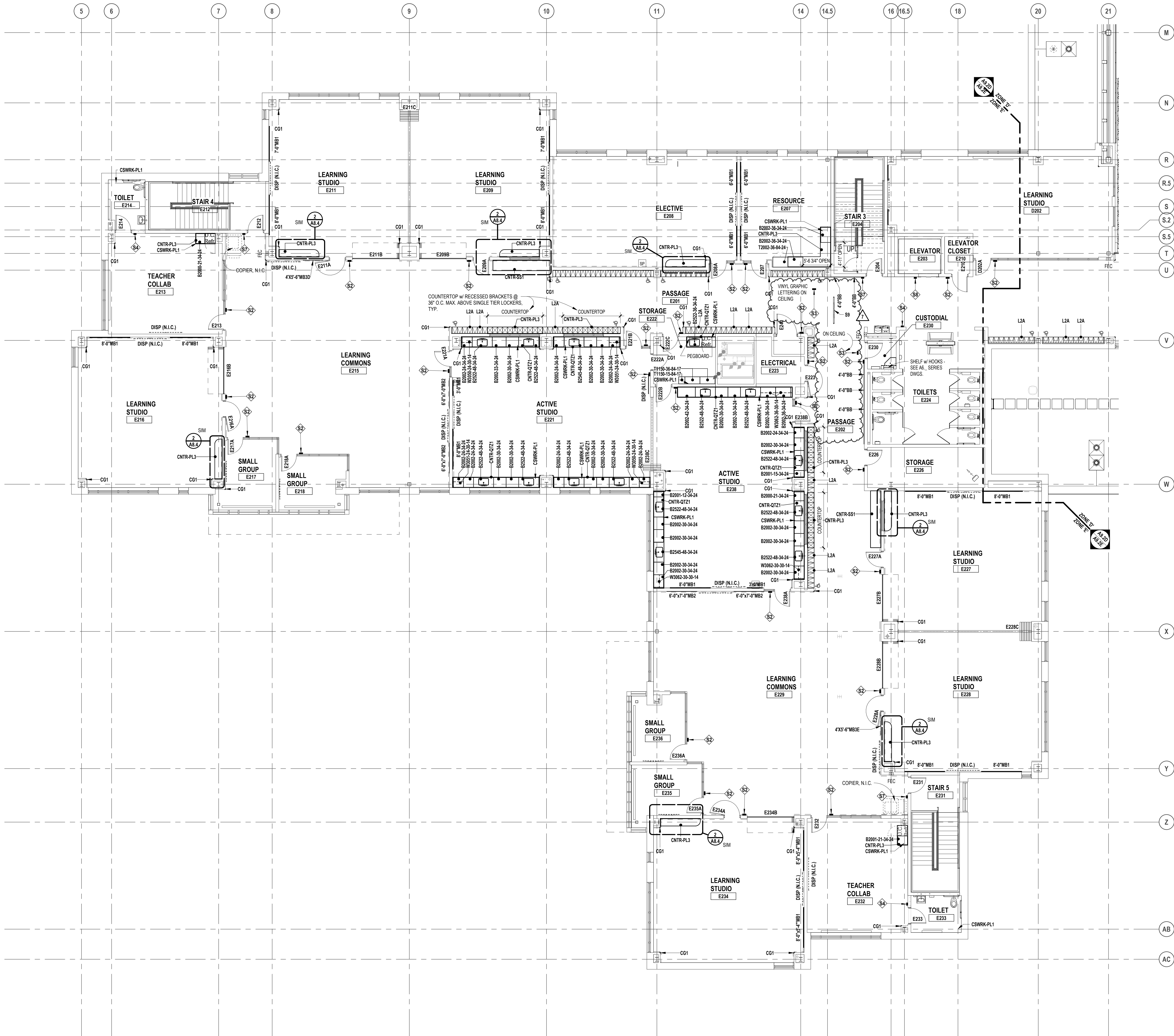
22102

drawing no.

A9.2D

SECOND FLOOR CASEWORK PLAN - ZONE 'D'
SCALE: 1/8" = 1'-0"

Autodesk Docs/22102_Troy Smith MS22102-ARCH-22.rvt
1/13/2025 10:53:49 AM



SECOND LEVEL CASEWORK PLAN - ZONE 'E'

SCALE: 1/8" = 1'-0"

LEGEND

FES

FEC

FIRE EXTINGUISHER IN CABINET (FEC)

FIRE EXTINGUISHER ON WALL BRACKET (FE)

7'-0" HIGH (UON) SURFACE MOUNT CORNER GUARD

CG1

VISUAL DISPLAY BOARD NOTES

TYPE OF BOARD

6'-0" MB1

WIDTH OF BOARD/STRIP

HEIGHT OF ALL BOARDS ARE 4'-0" (UON)

NOTES:

1. MB1 = MARKERBOARD
TB = TACKBOARD
TS = TACK STRIP
DSP = DISPLAY (BY OTHERS)

2. MOUNTING HEIGHTS (UON):
MB1TB = 3'-4" AFF TO BOTTOM

3. MAP RAILS SHALL BE CONTINUOUS OVER MARKERBOARDS.

4. ALL MARKERBOARDS SHALL BE PROVIDED WITH TRAYS & MAP RAILS.

5. LEGEND:
MB1 = PORCELAIN ENAMEL STEEL HORIZONTAL ORIENTATION
MB2 = PORCELAIN ENAMEL STEEL VERTICAL ORIENTATION
MB3 = MAGNETIC GLASS

CASEWORK NOTES

1. ALL PREFABRICATED CABINETS INDICATED ARE BASED ON TMI STORAGE SYSTEMS CORPORATION PRODUCTS. REFER TO TMI CATALOG FOR TYPICAL NUMBERING FORMAT.

2. ALL TMI CABINETS ARE DESIGNATED USING THE TYPICAL TMI ELEVEN (11) DIGIT NOTATION SYSTEM. THE FIRST FIVE DIGITS ARE THE MODEL NUMBER FOLLOWED BY THREE SETS OF TWO DIGIT NUMBERS FOR THE WIDTH, HEIGHT AND DEPTH.

3. WIDTH, HEIGHT AND DEPTH OF PREFABRICATED CABINETS IS INDICATED IN INCHES UNLESS NOTED OTHERWISE. MODEL DIMENSIONS ARE NOMINAL UNLESS SPECIFICALLY NOTED. "0000-00-00-00" INDICATES MODIFIED CASEWORK.

4. PROVIDE PLASTIC LAMINATE COUNTERTOPS (WITH BACKEND SPLASHES) AT ALL BASE CABINETS. RADIUS ALL OUTSIDE CORNERS (U.O.N.)

5. ALL EXPOSED SURFACES OF CASEWORK TO BE FINISHED, TYPICAL.

6. WALL CABINETS (OVER COUNTERS) ARE TYPICALLY MOUNTED AT 7'-4" AFF TO TOP (UON).

7. PROVIDE FINISHED END PANELS ON ALL EXPOSED CASEWORK ENDS.

8. PROVIDE RESTRAINING CHAINS ON ALL END BASE AND WALL CABINET DOORS WHICH OPEN AGAINST PERPENDICULAR WALLS.

9. WHERE CASEWORK IS HELD AWAY FROM WALLS, TO FLUSH-OUT WITH ADJACENT CABINETS, SCRIBE END/FILLER PANELS TO WALLS.

10. PROVIDE FILLER PANELS WHERE SHOWN AND/OR OTHERWISE REQUIRED FOR A COMPLETE INSTALLATION.

11. PROVIDE LOCKS AT ALL CABINET DOORS AND DRAWERS (U.O.N.)

12. MODIFY SINK BASE CABINETS AS REQUIRED TO ACCOMMODATE OVERSIZED SINKS (SEE MECHANICAL FOR OVERSIZED SINK LOCATIONS).

13. WHERE BF 3/4" HIGH BASE CABINETS ARE INDICATED, MODIFY CABINET CONSTRUCTION BY REDUCING THE HEIGHT OF ALL COMPARTMENTS EQUALLY (INDICATE ON SHOP DWGS.)

14. PROVIDE INTERMEDIATE PLASTIC LAMINATE CLAD SUPPORT PANELS @ 4'-0" OC MAXIMUM AT ALL UNSUPPORTED COUNTER TOPS (UON).

15. PROVIDE GROMMETS AT ALL COUNTERS WITH KNEESPACES, WHERE POWERDATA OUTLETS ARE LOCATED BELOW (REFER TO ELECTRICAL DRAWINGS FOR LOCATIONS). UON. PROVIDE (1) ONE GROMMET PER KNEESPACE (UON). FINAL LOCATIONS WILL BE MARKED-UP ON THE SHOP DRAWING SUBMITTAL.

16. PROVIDE MOISTURE RESISTANT PARTICLE BOARD AT SINK BASE, COUNTERTOP, AND SPLASH WITHIN 18" OF SINK.

17. SEE MECHANICAL DRAWINGS FOR POINT OF USE ACID NEUTRALIZATION TANKS.

18. ALL TYPICAL MUSIC WING CABINETS INDICATED ARE BASED ON WENGER CORPORATION PRODUCTS. REFER TO WENGER CATALOG FOR TYPICAL NUMBERING FORMAT.

19. ALL WENGER CABINETRY IS DESIGNATED USING THE PREFIX "W-" AND THEN THE WENGER NUMBER SYSTEM.

20. NOT USED.

LOCKER LEGEND

TYPE L-1

SINGLE-TIER STANDARD LOCKERS (12" X 15" X 72" HIGH) VENTILATED, ON METAL "Z" BASE

SINGLE-TIER ADA ACCESSIBLE LOCKERS (12" X 15" X 72" HIGH) VENTILATED, ON METAL "Z" BASE

TYPE L-2

DOUBLE-TIER CORRIDOR LOCKERS (12" X 15" X 80" HIGH) VENTILATED, ON METAL "Z" BASE

DOUBLE-TIER ADA ACCESSIBLE CORRIDOR LOCKERS (12" X 15" X 80" HIGH) VENTILATED, ON METAL "Z" BASE

TYPE L-3

SINGLE-TIER STANDARD LOCKERS (12" X 15" X 30" HIGH) VENTILATED, ON METAL "Z" BASE

SINGLE-TIER ADA ACCESSIBLE STANDARD LOCKERS (12" X 15" X 30" HIGH) VENTILATED, ON METAL "Z" BASE

TYPE L-4

SINGLE-TIER ATHLETIC LOCKERS (15" X 15" X 72" HIGH), VENTILATED, ON 4" TALL CMU BASE

SINGLE-TIER ADA ACCESSIBLE ATHLETIC LOCKERS (15" X 15" X 72" HIGH) VENTILATED, ON 4" TALL CMU/CONCRETE BASE (-/-)

TYPE L-5

FIVE-TIER ATHLETIC LOCKERS (15" X 15" X 60" HIGH), VENTILATED, ON 4" TALL CMU/CONCRETE BASE

FIVE-TIER ADA ACCESSIBLE ATHLETIC LOCKERS (15" X 15" X 60" HIGH) VENTILATED, ON 4" TALL CMU BASE

TYPE L-6

DOUBLE-TIER ATHLETIC LOCKERS (15" X 15" X 60" HIGH), VENTILATED, ON 18" TALL CMU BASE

DOUBLE-TIER ADA ACCESSIBLE ATHLETIC LOCKERS (15" X 15" X 60" HIGH) VENTILATED, ON 18" TALL CMU BASE

TYPE L-7

DOUBLE-TIER ATHLETIC LOCKERS (24" X 15" X 72" HIGH), VENTILATED, ON 18" TALL CMU BASE

DOUBLE-TIER ADA ACCESSIBLE ATHLETIC LOCKERS (24" X 15" X 72" HIGH) VENTILATED, ON 18" TALL CMU BASE

LOCKER NOTES:

1. PROVIDE CONTINUOUS SLOPED TOPS AT ALL LOCKERS (UON)

2. PROVIDE FILLER PIECES AT ENDS & CORNERS AS REQUIRED

3. SIZES INDICATED ABOVE REFER TO WIDTH x DEPTH x HEIGHT

4. LOCKERS TAGGED WITH "A" ARE ACCENT COLOR LOCKERS. SEE SPECIFICATIONS.

PROJECTION SCREEN SCHEDULE

PS-A

22'-6" x 14'-9"

ELECTRICALLY OPERATED, WALL MOUNTED

PS-B

9'-4" x 6'-0-1/2"

FIXED, WALL MOUNTED

PC-C

16'-6" x 10'-4"

ELECTRICALLY OPERATED, RECESSED MOUNTED

NOTES:

1. REFER TO ELECTRICAL PLANS AND SPECIFICATIONS FOR ADDITIONAL INFORMATION.

INTERIOR SIGNAGE

THIS IS AN INTERIOR SIGNAGE IDENTIFICATION. REFER TO SPECIFICATIONS FOR INTERIOR SIGNAGE TYPE AND SCHEDULED INFORMATION

TMP ARCHITECTURE INC
1191 WEST SQUARE LAKE ROAD
BLOOMFIELD HILLS - MICHIGAN 48302
PH: 248.338.4691 FX: 248.338.8223
EM: INFO@TMP-ARCHITECTURE.COM

registration seal

consultant

PROJECT TITLE
NEW SMITH MIDDLE SCHOOL
Bid Package No. 03B

Troy School District
Troy, Michigan

DRAWING TITLE
Second Level Casework & Equipment Plan - Zone 'E'

issue dates

01-13-2025	BULLETIN NO. 7
10-31-2024	CONSTRUCTION SET
07-16-2024	ADDENDUM NO. 3 (N.R.)
06-16-2024	CONSTRUCTION DOCUMENTS

date: issued for:

drawn do

checked jw

approved dl

project no.

22102

drawing no.

A9.2E