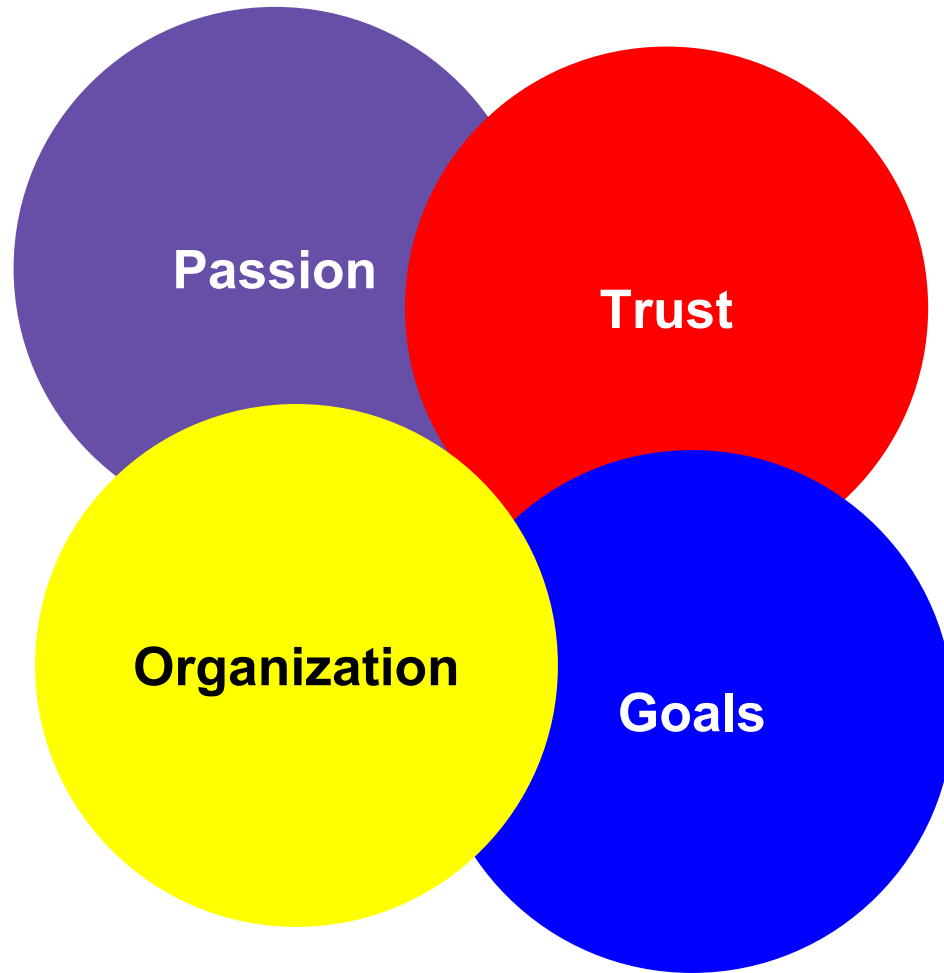




SUPERINTENDENT'S REPORT

August 8, 2024



Today

Geoffrey Cooker

New Position: Director of Security

Former Position: Security Supervisor

Before 86: Cary Police Department
detective, inspector, division
sergeant and deputy police chief



Contractual Market Adjustments



This Past Spring



Top anticipated college destinations for the class of 2024.

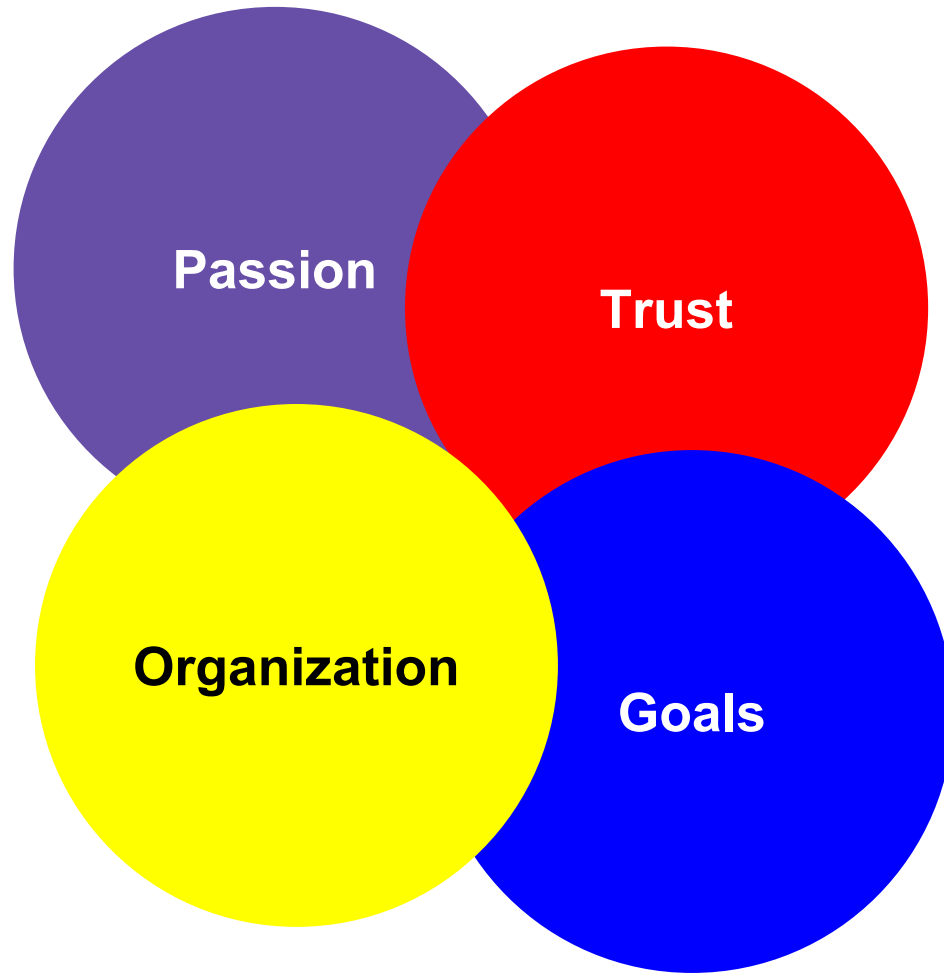
Hinsdale Central (556 graduates)

- 1 University of Illinois at Urbana-Champaign
- 2 College of DuPage
- 3 Indiana University-Bloomington
- 4 Purdue University
University of Illinois at Chicago
University of Wisconsin-Madison
- 7 University of Iowa
- 8 DePaul University
Loyola University Chicago
- 10 Miami University-Oxford

Hinsdale South (240 graduates)

- 1 College of DuPage
- 2 Illinois State University
University of Illinois at Chicago
- 4 University of Illinois at Urbana-Champaign
- 5 Loyola University Chicago
University of Iowa
- 7 Indiana University-Bloomington
Purdue University
- 8 Benedictine University
Iowa State University
Michigan State University
University of Wisconsin-Madison

Summer
(getting ready for 2024-25!)



Lots of summer construction.

All nearly complete.



A photograph of a construction site. In the foreground, a large white crane with a long boom is positioned on a paved area. The boom is extended upwards and to the right. In the background, there is a large, multi-story brick building with several windows. The sky is blue with some white clouds. The text "Lots of summer construction." is overlaid on the image in a large, bold, black font.

Lots of summer construction.

All nearly complete.

(except for one project)

New room numbers!



3103



3105



3107

1301 - 1325



1519 - 1538



1601 - 1618



1701 - 1706



CAFETERIA



GYM





New paint for Central's gym

A photograph of a modern staircase with grey treads and railings. The stairs are set against a wall with light-colored square tiles. A window is visible at the top of the stairs. The text "New stairway tread and railings" is overlaid on the left side of the image.

**New
stairway
tread
and
railings**



New flooring at Hinsdale South

New exterior windows at Central





New courtyard!



New department offices at both schools!

Central Pool Expected to Reopen by October 7



District 86 Update

AUGUST 8, 2024

Construction Update: Hinsdale Central's Don Watson Aquatic Center

Hinsdale Central's Don Watson Aquatic Center has been closed throughout the summer to address tented and cracked tiles on the pool deck. After multiple unsuccessful attempts to remediate the issue, District 86 contracted with Wiss, Janney, Elstner Associates, Inc. (WJE) to investigate the root cause(s). WJE's team of architects, engineers, and materials scientists identified multiple issues with the original design/installation, and recommended a full replacement of the pool tile deck.

We now expect the pool to reopen on Monday, October 7. Construction teams will be working six days a week to meet this target.



Textbooks, Comprehensive Registration Fee

99% of all ebooks, textbooks and workbooks have been ordered.

90% of textbooks and workbooks have been received.

85% of ebooks have been received.



A Tradition of Excellence Registration Fee Frequently Asked Questions

Q. Why is the District transitioning to a single comprehensive registration fee?
A. The current system involves separate fees for each course, in addition to expenses such as textbook purchases through a third party, course supplies, academic field trips, student ID, PE uniforms, graduation fees, and technology fees. The new fee structure consolidates these individual charges into a unified registration fee.

Q. What is included in the new comprehensive fee structure?
A. The new comprehensive fee covers all course fees, textbooks, course supplies, academic field trips, student ID, PE uniforms, graduation fees, technology fee, course-related field trips and activity pass.

Q. What is NOT included in the new comprehensive fee structure?
A. The comprehensive fee does not cover activities and athletic participation fees and driver's education fees.

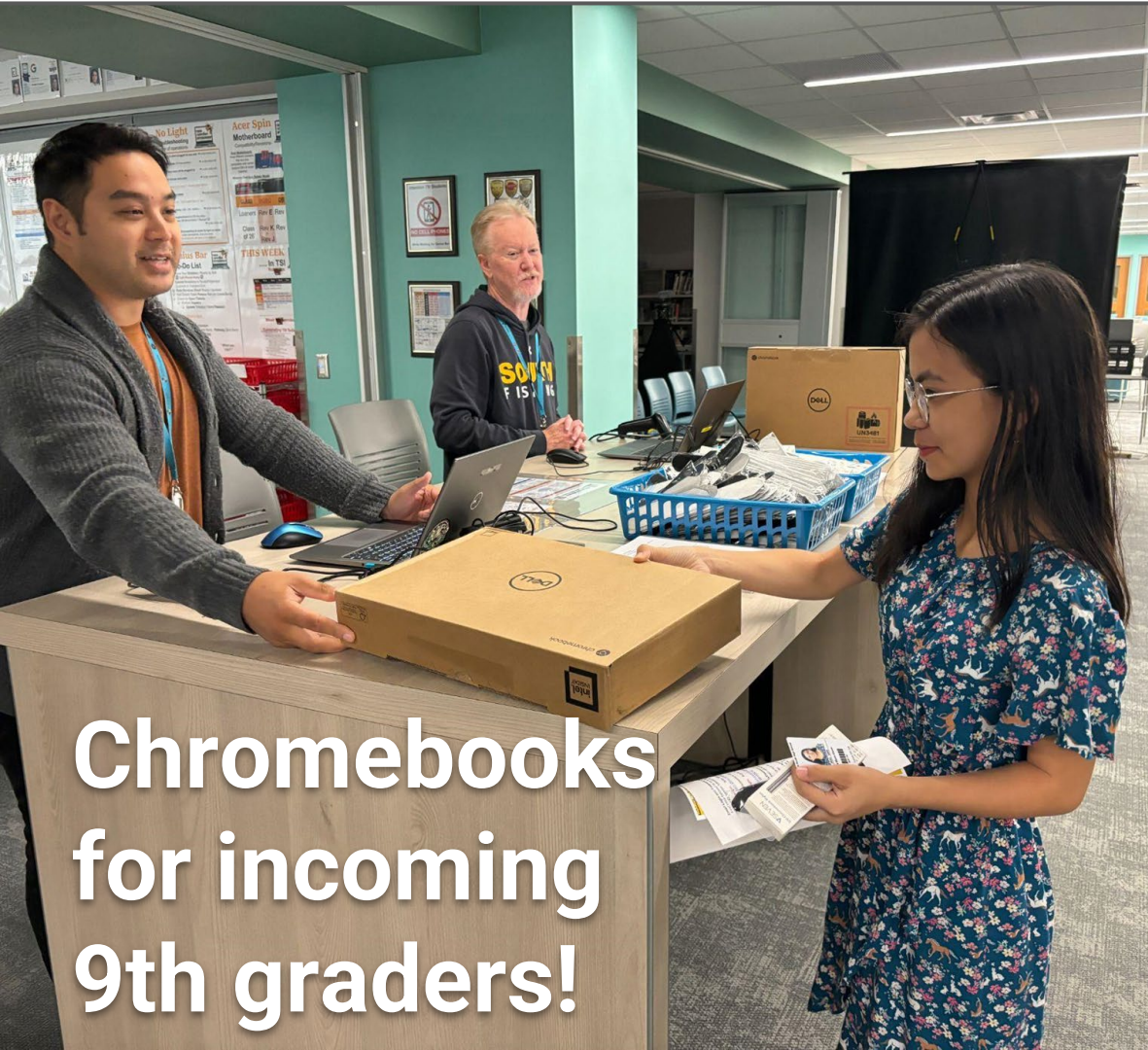
Q. Why does the new comprehensive registration fee seem higher than what I paid last year?
A. The new registration fee now includes the cost of the required course textbooks. These were previously purchased by parents/guardians.

Q. In the past, parents/guardians used to purchase books through My Book Store (MBS). How will my student(s) receive their course books next year?
A. The District will purchase textbooks, and students will receive them at the beginning of the school year. By procuring course books directly from publishers, the District can secure competitive pricing, ultimately reducing overall book costs for families.

Q. In the past, parents/guardians used to buy books from Amazon, eBay, or other retailers at a discounted price. Does the new fee charge more for course books?
A. The District will acquire the books, and students will receive them at the start of the school year. Since the District will directly purchase textbooks from publishers, it can obtain competitive pricing, resulting in lower overall book expenses for families.

Q. What are the benefits of a comprehensive fee from a parent/guardian perspective?
A. Parents/guardians will pay a consistent annual fee during registration, making it easier to budget for school-related costs. All textbooks will be provided on behalf of the students, simplifying the start-of-term process for both parents/guardians and students.

Q. Can parents/guardians make partial payments instead of paying the entire fee at once?
A. Yes, parents/guardians have the option to set up a payment plan through their Infinite Campus portal.



Chromebooks
for incoming
9th graders!



440 new staff laptops, per
typical replacement cycle

42 multifunction copiers
replaced

Upgraded sound system at Central's gym and
fieldhouse and South's little theatre

Improved wireless security



16 new teachers/certified staff members
1,313 total applicants
0 open teaching/certified positions





HINSDALE TOWNSHIP DISTRICT 86

NEW EDUCATOR ORIENTATION PROGRAM

DAY 2 - TECHNOLOGY & STUDENT SERVICES INFORMATION	
When:	Thursday, August 8, 2024
Where:	Hinsdale South High School - Room 3201
CEU Sign In	24-25 New Educator Orientation Day 2 Sign In Link 8.8.24
AGENDA	
7:30 a.m.	Continental Breakfast, Hinsdale South, Room 3201
8:00 a.m.	Technology Workshop <ul style="list-style-type: none">• D86's technology protocols and "Acceptable Use Policy"• Receive your computer if you've not already received it• If you do have it, bring it CHARGED!• Find out how to use Canvas, Instructional Technology Tools, and D86's gradebook program
11:30 a.m.	Lunch on your own
12:30 p.m.	Technology Workshop & Student Services Staff with Student Services <ul style="list-style-type: none">• Introduction to administration• Non-Student Services staff resume technology training• Student Services staff (except counselors) will be with the Student Services administration team at Hinsdale South (room 1308) in the Special Education Conference Room
3:15 p.m.	Dismissal <i>Friday is open office hours at each building. More information to come.</i>
CEU Sign Out	24-25 New Educator Orientation Day 2 Sign Out Link 8.8.24

Summer Learning, Summer Work

Seven D86 teachers completed their **multilingual teaching endorsement** this summer via National-Louis University.

Over 100 staff members participated in **47 summer curriculum** projects.

Teachers and instructional leaders developed materials for the **transition from SAT to ACT**.

We prepared our **Geometry In Construction** course for implementation.

The special education team developed curricula for new and existing special education courses and supports for students district-wide.

Our **ESL I-III curriculum** has been updated to better align vertically.

Attendance at the *United: The National Conference On School Leadership* (NASEP, NASSP) and *AP Annual Conference*.

SHARE



Scan Below To Share
Your Good News!



SHARE



SHARE



SHARE





*Parent
Series*

Navigating Healthy Families



THU AUG, 22 2024 @ NOON AND 7PM CST

Dr. Aliza Pressman with Dr. Lisa Damour

Start The Year Off Strong: 5
Essential Skills to Raise Students
Who Can Weather Life's Storms

[DETAILS](#)

[ZOOM LINK](#)

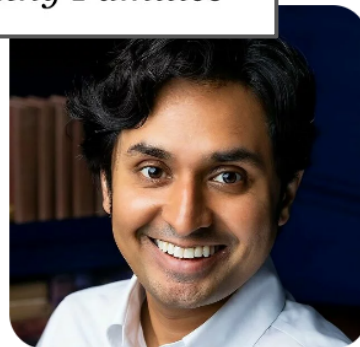


MON AUG, 26 2024 @ NOON AND 7PM
CST

Dr. Amy Cuddy with Rosalind Wiseman

Presence: Using Body Language
and the Mind to Boost
Confidence, Performance Under
Stress and Social Bravery

[DETAILS](#)



TUE AUG, 27 2024 @ NOON AND 7PM CST

Alok Kanojia

How to Raise a Healthy Gamer:
Navigate Power Struggles and
Build Better Screen Habits (to
Transform Your Relationship With
Your Kid)

[DETAILS](#)



WED AUG, 28 2024 @ NOON AND 7PM CST

Dr. Ann-Louise Lockhart

Early Childhood Event – Solutions
for Fear, Worry and Anxiety in
Young Children

[DETAILS](#)



District 181
Foundation

COMMUNITY SPEAKERS SERIES

SERVING THE DISTRICT 86 AND DISTRICT 181
COMMUNITIES



Fall
(2024-25 and beyond)

The best high school district in Illinois

The best high school district in Illinois

On any metric

The best high school district in Illinois

On any metric

For all students and families









Like a team

MISSION

Why We Exist

ring students to pursue
real future by acquiring
skills and knowledge to
rate, create and connect
an ever-changing world

OUR VALUES

WHAT WE STAND FOR

Access
Accountability
Diversity
Equity
Excellence
Perseverance
Resiliency
Respect
Trust

86Forward
HINSDALE TOWNSHIP HIGH SCHOOL DISTRICT
Defining excellence.

District 86 will set the standard for excellence
In five years, the District will use the following comp

Coherent System	District 86, its two high school fosters respect, voice, and en vision, and goals unites the that needs of all students a
Critical Competencies	District curriculum, founda school link to the life skills and communication. The global citizenship. Learn all students.
Multiple Measures for Success	Student, team or depa information system c improvement of per report progress. Imp
Student Well-Being	Students feel safe, culture, programs report they feel w prepared for the
Innovative Teaching and Learning Practices	Engaging teachi connections, re to demonstr place both in learning. Stu
Collaboration and Communication Partnerships	The facilitie multiple p for innov accessibi Internal and im and un real a Distr furt pay

OUR VISION

WHERE WE ARE HEADED

WHAT WE WILL ACHIEVE

OUR GOALS AND STRATEGIES

WHAT IS OUR P

Goal One	Goal Two	Goal Three	Goal Four	Goal Five
Student Growth and Achievement	Learning Environment	Work Environment	Family and Community Connections	Resource
All students are engaged in a rigorous education resulting in college, career, and life readiness	The learning environment promotes student well-being	Systems promote staff engagement, collaboration, innovation, satisfaction, and accountability	Families and the community are engaged as valued partners in the education process	Financial, facility, technological resour with District goals st and core value
Key Performance Measures will be established for all goals and strategies to monitor and report progress.				
High Priority Strategies	High Priority Strategies	High Priority Strategies	High Priority Strategies	High Priority Strategies
1. Course and instructional units include common critical competencies, aligned assessments between the two high schools, and multiple measures of success	4. Optimize the school day and calendar to meet individual student being	7. Staff have new opportunities for engagement and input into critical decisions that lead to improved collaboration, communication, professional development, and system coherence	10. Communication and collaboration with families and the community give them voice and opportunities for engagement and input and create new partnerships, all of which build trust and unity in the District 86 community	12. Resources are equitably distributed to meet the needs students as well as achieve the mission, vision, goals and strate of the strategic plan
2. Students explore big ideas, leverage technology, make real-world connections, and use authentic ways to demonstrate their knowledge and interests	5. Students have opportunities for participating in school decisions, engagement, and responsibility for school outcomes	8. A meaningful data and information system improves goal setting, analysis, progress monitoring, and reporting of performance across all functions	11. Partnerships with the community enhance student vocational, career, and life readiness	13. Facilities make both schools equitable and optimal for teaching and learning practices
3. Students use their individual data to shape decisions about career and life readiness	6. Best practices improve student social and emotional skills, and reduce excessive stress	9. District 86 and sender K-8 districts collaborate to inform instruction and to develop a pathway linking elementary, middle, and high school experiences		14. Infrastructure, accessibility, and safety-deficiencies are addressed
				15. A sustainable maintenance and technological infrastructure plan is implemented

Understand the plan



Below is the schedule for the Strategic Planning Team.

Note that food will be provided at all sessions. Please email Karen Warner at kwarnar@hinsdale86.org by noon on Friday, January 19 with any dietary restrictions.

D86 Strategic Team Schedule

Date	Day	Time	Location	Event	Food Provided
January 18	Thursday	6:30 – 8:00 p.m.	Transition Center	Orientation	Light Refreshments
January 24	Wednesday	8:30 a.m. – 3:30 p.m.	Transition Center	Data Retreat	Breakfast & Lunch
February 28	Wednesday	8:30 a.m. – 3:30 p.m.	Transition Center	Vision Retreat	Breakfast & Lunch
March 21	Wednesday	8:30 a.m. – 3:30 p.m.	Transition Center	Setting Direction Retreat	Breakfast & Lunch
April 18	Wednesday	8:30 – 11:30 a.m.	Transition Center	Final Team Plan Meeting	Breakfast



HINSDALE TOWNSHIP
HIGH SCHOOL DISTRICT 86

Strategic Plan: Goal Team Updates June 2022

A long-exposure photograph of the night sky showing concentric star trails. The trails are composed of many short, overlapping lines of light in shades of blue, white, and pink. They all appear to originate from a single point in the center of the frame, which is the North Star (Polaris). The star trails form a dense, circular pattern that fills most of the image. In the foreground, the dark silhouettes of evergreen trees are visible on the left and right sides, framing the starry sky.

Figure out our North Star

MISSION

Why We Exist

ring students to pursue
real future by acquiring
skills and knowledge to
rate, create and connect
an ever-changing world

OUR VALUES

WHAT WE STAND FOR

Access
Accountability
Diversity
Equity
Excellence
Perseverance
Resiliency
Respect
Trust

86Forward
HINSDALE TOWNSHIP HIGH SCHOOL DISTRICT
Defining excellence.

District 86 will set the standard for excellence
In five years, the District will use the following comp

Coherent System	District 86, its two high schools fosters respect, voice, and vision, and goals unites the that needs of all students a
Critical Competencies	District curriculum, founda school link to the life skills and communication. The global citizenship. Learn all students.
Multiple Measures for Success	Student, team or depa information system c improvement of per report progress. Imp
Student Well-Being	Students feel safe, culture, programs report they feel w prepared for the
Innovative Teaching and Learning Practices	Engaging teachi connections, re to demonstr place both in learning. Stu
Collaboration and Communication Partnerships	The facilitie multiple p for innov accessibi Internal and im and un real a Distr furt pay

OUR VISION

WHERE WE ARE HEADED

WHAT WE WILL ACHIEVE

OUR GOALS AND STRATEGIES

WHAT IS OUR P

Goal One	Goal Two	Goal Three	Goal Four	Goal Five
Student Growth and Achievement	Learning Environment	Work Environment	Family and Community Connections	Resource
All students are engaged in a rigorous education resulting in college, career, and life readiness	The learning environment promotes student well-being	Systems promote staff engagement, collaboration, innovation, satisfaction, and accountability	Families and the community are engaged as valued partners in the education process	Financial, facility, technological resour with District goals st and core value
Key Performance Measures will be established for all goals and strategies to monitor and report progress.				
High Priority Strategies	High Priority Strategies	High Priority Strategies	High Priority Strategies	High Priority Strategies
1. Course and instructional units include common critical competencies, aligned assessments between the two high schools, and multiple measures of success	4. Optimize the school day and calendar to meet individual student needs and promote student well-being	7. Staff have new opportunities for engagement and input into critical decisions that lead to improved collaboration, communication, professional development, and system coherence	10. Communication and collaboration with families and the community give them voice and opportunities for engagement and input and create new partnerships, all of which build trust and unity in the District 86 community	12. Resources are equitably distributed to meet the needs students as well as achieve the mission, vision, goals and strate of the strategic plan
2. Students explore big ideas, leverage technology, make real-world connections, and use authentic ways to demonstrate their knowledge and interests	5. Students have opportunities for participating in school decisions, engagement, and responsibility for school outcomes	8. A meaningful data and information system improves goal setting, analysis, progress monitoring, and reporting of performance across all functions	11. Partnerships with the community enhance student vocational, career, and life readiness	13. Facilities make both schools equitable and optimal for teaching and learning practices
3. Students use their individual data to shape decisions about career and life readiness	6. Best practices improve student social and emotional skills, and reduce excessive stress	9. District 86 and sender K-8 districts collaborate to inform instruction and to develop a pathway linking elementary, middle, and high school experiences		14. Infrastructure, accessibility, and safety-deficiencies are addressed
				15. A sustainable maintenance and technological infrastructure plan is implemented



Portrait of a Graduate (POG)

Mission

This committee is charged with developing the profile of a District 86 graduate. This profile will feature the qualities and characteristics we want our students to possess when they leave our district. It will also guide the efforts we undertake to ensure that our students have the knowledge and skills they need to successfully pursue their ideal future.

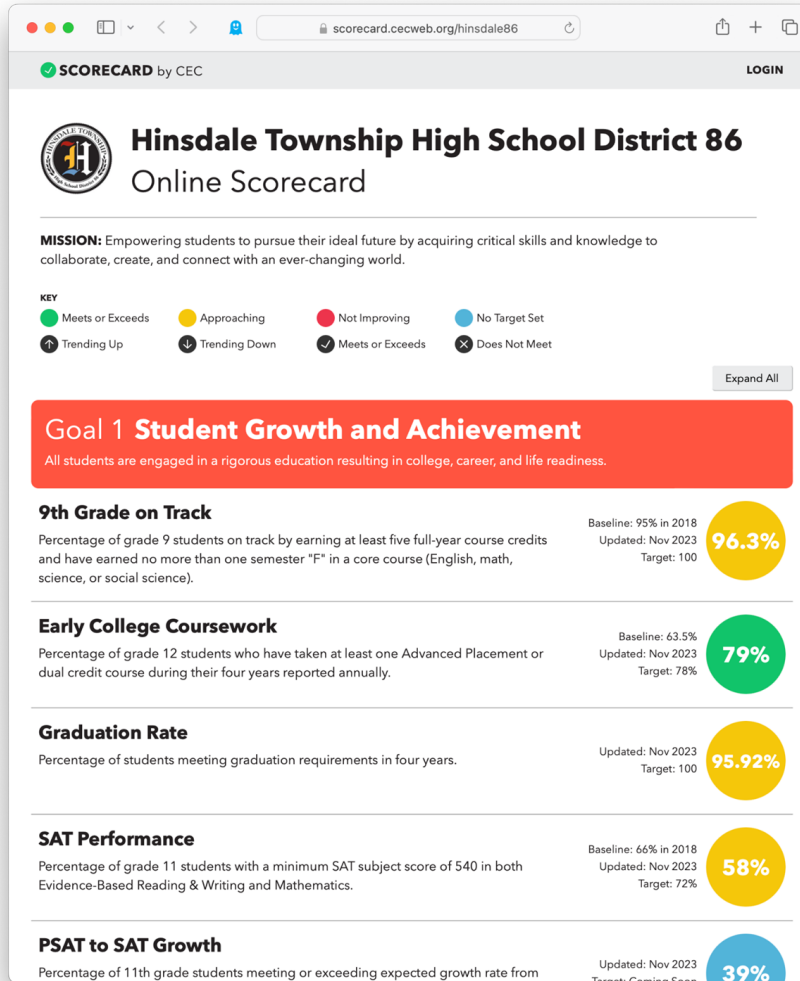
Outcomes

- Qualities and character
- Guides the efforts we u
- knowledge and skills ne
- Informs curriculum inst
- Helps in decision maki

All-Group Comparisons:

Group 1	Group 2	Group 3	Group 4
Academic Success	Adaptable	Perseverance	Critical thinker
Effective	Collaborative	Fearlessly	Team player
Communicator	Critical Thinkers	curious/willing to learn	Integrity
Civic Minded	Empathetic	Civic minded	Self-advocates
Critical Thinker	Problem Solvers	Inclusive Mindset	Adaptable
Fearlessly Curious	Self-advocates	Collaborative	Resilient
Resilient	Resilient	Self-directed/stro	Inclusive,
Inclusive Mindset		g work ethic	informed citizens
		Integrity	Effective
		Critical Thinker	communicator
		cial-emotionally	Strong work
		anced	ethic





Coherent System	District 86, its two high schools, and communities are one coherent, unified system. Collaboration fosters respect, voice, and engagement among all stakeholders. Commitment to a shared mission, vision, and goals unites the District. Resources and opportunities are equitably provided to ensure that needs of all students are being met.
Critical Competencies	District curriculum, foundational knowledge, and competencies required for success after high school link to the life skills of critical thinking, creative thinking, problem solving, collaboration, and communication. These critical competencies link to character and leadership required for global citizenship. Learning expectations and experiences are rigorous, relevant, and equitable for all students.
Multiple Measures for Success	Student, team or department, school, and District 86 success links to a meaningful data and information system consisting of multiple measures for goal setting, reflection, analysis, and improvement of performance. Multiple measures are used at all levels to periodically assess and report progress. Improvement is the first criterion of success.
Student Well-Being	Students feel safe, challenged, confident, and responsible for their own learning. District 86 culture, programs, practices, and services foster student social and emotional well-being. Students report they feel well prepared for their future. Families report they feel their student is well prepared for their future.
Innovative Teaching and Learning Practices	Engaging teaching and learning practices ensure students explore big ideas, make real-world connections, relate their learning to their passions, and give students multiple and authentic ways to demonstrate their knowledge. Instructional tools, including technology, ensure learning takes place both inside and outside the classroom. Assessment leads to next steps in teaching and learning. Student growth is the first criterion of success.
Facilities	The facilities support a safe and secure learning environment that provides opportunities for multiple pathways leading to college, career and life readiness. The facilities provide opportunities for innovative teaching and learning practices, including technology. All facilities are fully ADA accessible and meet Life-Safety requirements.
Collaboration and Communication	Internal and external communication and collaboration activate student, teacher, and parent voice and improved stakeholder satisfaction. Enhanced communication and collaboration create clarity and understanding and promote transparency. Communication closes the gap between what is real and what is perceived.
Partnerships	District 86 cultivates partnerships with business, agencies, and other community organizations to further student learning, career, and workplace experiences for students. District 86 cultivates partnerships with sender districts to further college, career, and life experiences for students.

