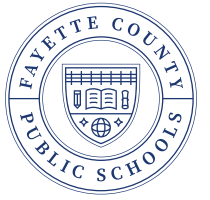


# Rise STEM Academy For Girls



Week Ending January 31, 2025



# Rise STEM Academy For Girls

## ➤ **Work Completed:**

- Continue with CMU Walls work.
- Continue with ICF walls work.
- Continue with Slab Preparation.
- Under slab MEP installation.
- Door frames installation continues as masons progress.
- Stair walls going up.
- Continue with Storm shelter and footers.
- Storm drainage work ongoing around the site.
- KU setting temp electric poles

## ➤ **Upcoming Work / Look Ahead:**

- Continue with concrete slab pouring.
- Began Gym floor preparation.
- KU to run power lines to the site
- Steel frames are delivering and will continue, and erectors will start setting main level.

# Rise STEM Academy For Girls

Installation of ICF Forms in Progress



# Rise STEM Academy For Girls

Installation of ICF Forms in Progress



Week Ending January 31, 2025

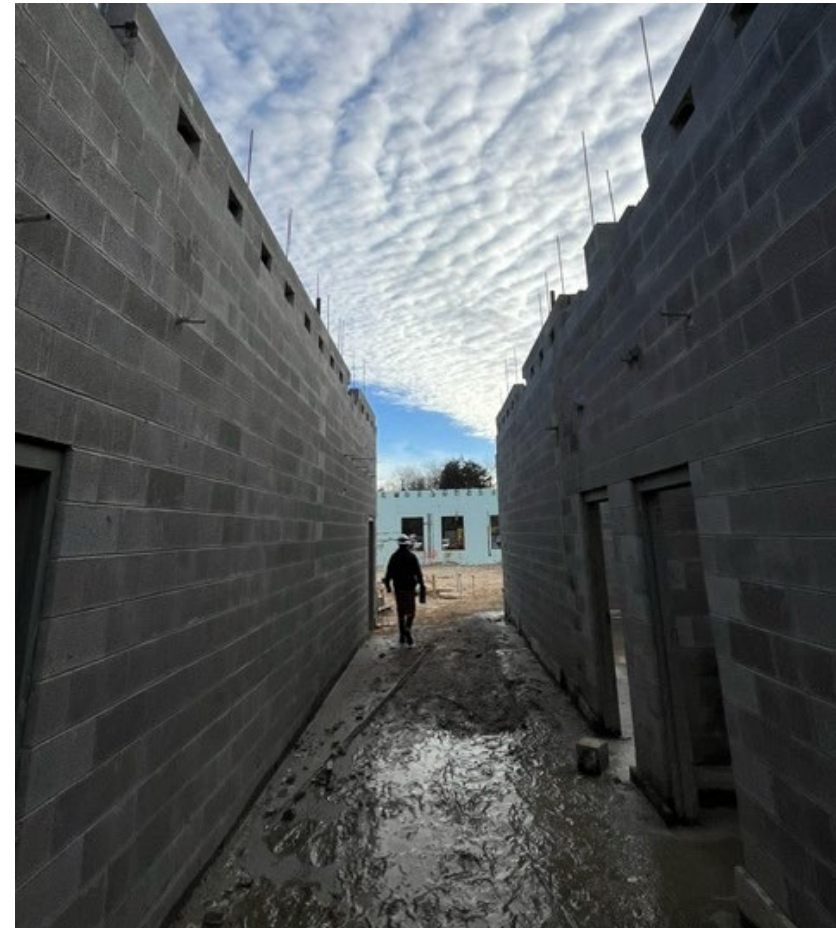
# Rise STEM Academy For Girls

## CMU Work in Progress



# Rise STEM Academy For Girls

## CMU Work in Progress



Week Ending January 31, 2025

# Rise STEM Academy For Girls

Under slab MEP Work in Progress



Week Ending January 31, 2025

# Rise STEM Academy For Girls

## Concrete Slab Work in Progress

