




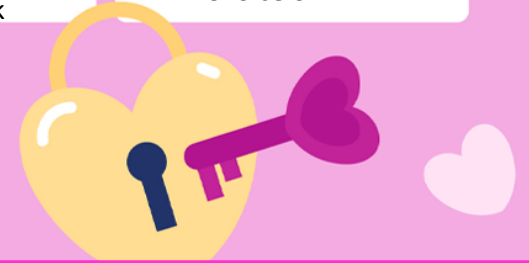
Student Breakfast FREE
 Adult Breakfast \$2.85
 Milk \$.75

FEBRUARY 2025 FOX CHAPEL AREA SCHOOL DISTRICT HS & DMS BREAKFAST MENU

Please make checks payable to:
 FCASD Cafeteria Fund.
 Money may also be deposited onto your child's
 account at www.schoolcafe.com
 USDA is an equal opportunity provider and employer

Monday	Tuesday	Wednesday	Thursday	Friday
Breakfast Pizza 3 Or Choice of Daily Entrée Choice of Assorted Fruit/Juice Choice of Milk	Egg Bites with a Bagel 4 Or Choice of Daily Entrée Choice of Assorted Fruit/Juice Choice of Milk	Cinnamon Roll 5 Or Choice of Daily Entrée Choice of Assorted Fruit/Juice Choice of Milk	Egg, Bacon, & Cheese 6 Scramble with English Muffin Or Choice of Daily Entrée Choice of Assorted Fruit/Juice Choice of Milk	Bagel with Cream Cheese 7 Or Choice of Daily Entrée Choice of Assorted Fruit/Juice Choice of Milk
Pancakes with Sausage 10 Or Choice of Daily Entrée Choice of Assorted Fruit/Juice Choice of Milk	Dutch Waffle 11 Or Choice of Daily Entrée Choice of Assorted Fruit/Juice Choice of Milk	French Toast Sticks 12 Or Choice of Daily Entrée Choice of Assorted Fruit/Juice Choice of Milk	Egg, Bacon, & Cheese 13 Scramble with English Muffin Or Choice of Daily Entrée Choice of Assorted Fruit/Juice Choice of Milk	Breakfast on a Stick 14 Or Choice of Daily Entrée Choice of Assorted Fruit/Juice Choice of Milk
NO SCHOOL 17  HAPPY PRESIDENT'S DAY	Egg Bites with a Bagel 18 Or Choice of Daily Entrée Choice of Assorted Fruit/Juice Choice of Milk	Cinnamon Roll 19 Or Choice of Daily Entrée Choice of Assorted Fruit/Juice Choice of Milk	Egg, Bacon, & Cheese 20 Scramble with English Muffin Or Choice of Daily Entrée Choice of Assorted Fruit/Juice Choice of Milk	Bagel with Cream Cheese 21 Or Choice of Daily Entrée Choice of Assorted Fruit/Juice Choice of Milk
Pancakes with Sausage 24 Or Choice of Daily Entrée Choice of Assorted Fruit/Juice Choice of Milk	Dutch Waffle 25 Or Choice of Daily Entrée Choice of Assorted Fruit/Juice Choice of Milk	French Toast Sticks 26 Or Choice of Daily Entrée Choice of Assorted Fruit/Juice Choice of Milk	Egg, Bacon, & Cheese 27 Scramble with English Muffin Or Choice of Daily Entrée Choice of Assorted Fruit/Juice Choice of Milk	Breakfast on a Stick 28 Or Choice of Daily Entrée Choice of Assorted Fruit/Juice Choice of Milk

Food Services Manager
Julie Geary
412-967-2502
Julie_Geary@fcasd.edu



Daily Entrée Choices:

Assorted Sandwiches: Egg & Cheese, Egg/Cheese & Sausage, Egg/Cheese & Bacon, on a Bagel or English Muffin

Whole Grain Poptarts, Assorted Cereal with Graham Crackers, Assorted Whole Grain Donuts, Assorted Whole Grain Muffins, Assorted Breakfast Bars