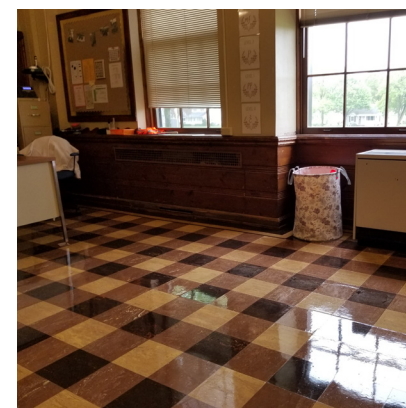
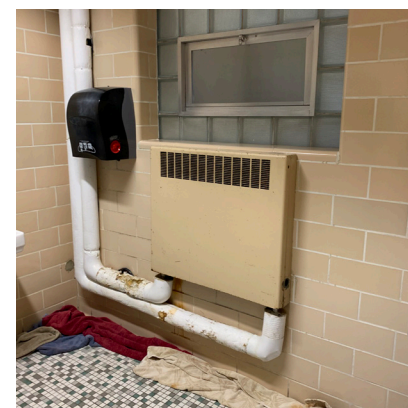
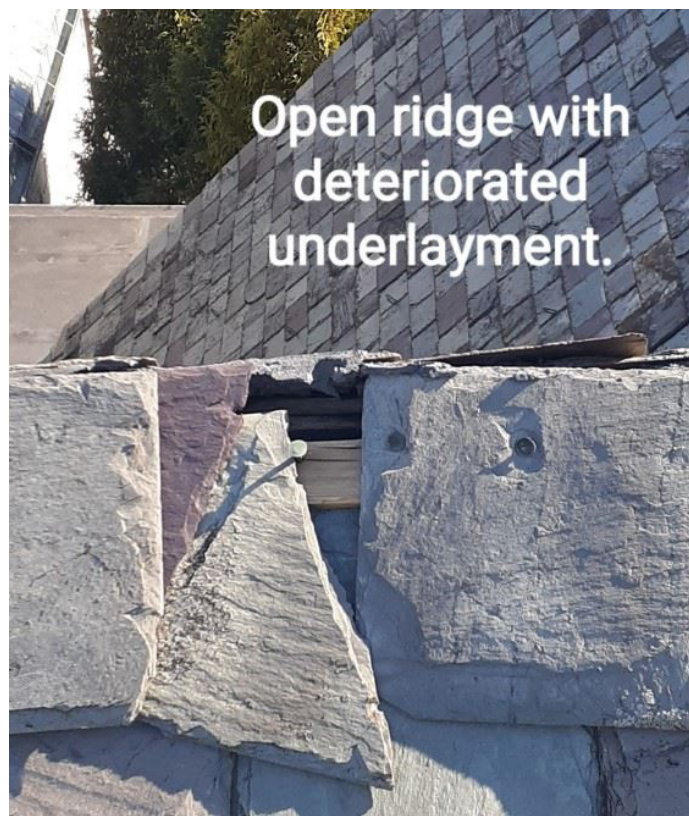




SCHOOL DISTRICT OF JEFFERSON

East Elementary School | October 6, 2021

ENVELOPE



SYSTEMS



INTERIORS



SITE

LEARN MORE AT WWW.SDOJ.ORG |  @SDofJ

SCHOOL DISTRICT OF JEFFERSON

East Elementary School | October 6, 2021

BUILDING FACTS

SERVES

Grades Early Learning and 4K-5
Headstart
Before- and after-school care
Parks and Recreation Department

BUILT

1938

ADDITIONS

1958 and 1998

BUILDING GROSS SQUARE FOOT

60,821 SF

SITE ACREAGE

8.91 acres

10-YEAR FACILITY

MAINTENANCE COSTS

\$7,469,205

TOUR NOTES & QUESTIONS

This image shows a blank sheet of white paper with horizontal ruling lines. The lines are evenly spaced and run across the width of the page. There are no margins, text, or other markings on the paper.

QUESTIONS?

Charles Urness, Superintendent
920.675.1013 | urnessc@sdoj.org

Tim Graffin, Director of Facilities
920.675.1090 | graffint@sdoj.org

Jake Wichman, East Principal
920.675.1400 | wichmanj@sdoj.org