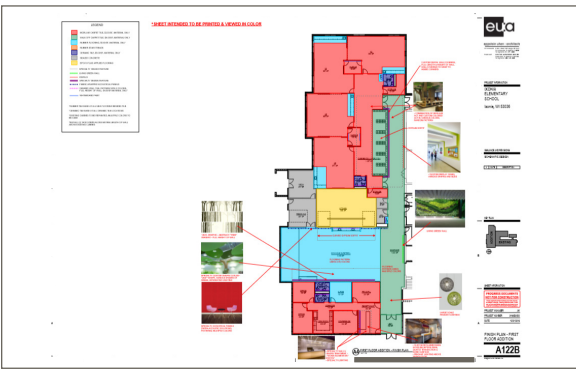


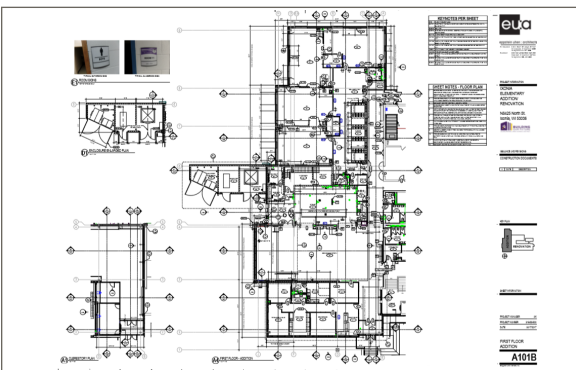
All images are from Ixonia Elementary School renovation.



Staff User Group Meeting



Schematic Design



Construction Document



Final Interior Image

REFERENDUM PASSES

SCHEMATIC DESIGN

Following the community's approval of a facilities referendum, the design process begins. The first phase is known as Schematic Design, and is highly collaborative between the school district staff and EUA's architectural team. The Schematic Design process includes developing drawings and renderings that provide definition to interior and exterior functions, space requirements, adjacencies and overall design intent. It can take up to four months to create initial plans and renderings that both capture the overall design concept and accurately reflect the needs and vision of the school district.

APPROX. 4 MONTHS

DESIGN DEVELOPMENT

During the Design Development phase, design concepts developed during Schematic Design are translated into specific details. The architectural team works closely with district staff and engineering consultants to design structural, mechanical, electrical, plumbing, and fire protection systems that will work effectively with the overall design concept and perform per the district's expectations. Cabinetry, fixtures and material selections are finalized. Construction systems and methods are reviewed with the construction manager to ensure budgetary alignment and interior details are vetted with district staff.

APPROX. 4 MONTHS

CONSTRUCTION DOCUMENTS

In the final phase of the design process, the design team produces the final drawings and specifications used to construct the building. All building components, systems, and materials are defined in detail, allowing the construction manager to competitively bid the work of all trades. This set of "detailed instructions" will be referenced throughout the construction, ensuring the building design is executed as intended. This process typically requires up to four additional months to complete.

APPROX. 4 MONTHS

CONSTRUCTION BEGINS

The construction timeline varies based on project and building type, size, complexity and the school district calendar. During this time, the construction manager leads the process and coordinates the work of all tradespeople. The design team remains involved, ensuring alignment with the final construction documents.

PROJECT COMPLETION