

Pleasant Grove Intermediate Campus Improvement Plan 2024/2025



Brooke Beall
8480 North Kings Hwy, Texarkana, TX 75503
903-832-0001
bbeall@pgisd.net

Date Reviewed:

DMAC Solutions ®

Page 1 of 27

Date Approved:

11/1/2024

Pleasant Grove Intermediate School

Mission & Vision

Mission

The mission of Pleasant Grove Intermediate School is to ensure high levels of learning and to prepare the whole child for success.

Vision

The vision of Pleasant Grove Intermediate School is to create a safe environment that promotes high levels of learning through a guaranteed and viable curriculum, meaningful collaboration, and quality instruction.

Shared Beliefs

1. What is it we want our students to learn?
2. How will we know if each student has learned it?
3. How will we respond when some students do not learn it?
4. How can we extend & enrich the learning for students who have demonstrated proficiency?

Site-Based Decision Making Committee

Name	Position
Thompson, Sarah	Paraprofessional
Bramlett, J.W.	Community Representative
Beall, Brooke	Principal
Deal, Cody	Business Representative
Freeman, Emily	Campus Professional Staff
Morris, Morgan	Campus Professional Staff
Coleman, Brooke	Parent Representative
Phillips, Kelly	Parent Representative
Jameson, Patty	District Nonteaching Professional
Nicholas, Vanessa	Campus Professional Staff
Loris, Amanda	Special Ed Teacher
Allison, Anastasia	Campus Professional Staff
Francis, Ashlee	Specialized Instructional Support
Garner, Jamie	Campus Professional Staff

Resources

Resource	Source	Amount
IDEA-B Special Education	Federal	\$62,504
Title I, Part A	Federal	\$70,856
Regular Ed Program(L)	Local	\$2,545,664
Special Education	State	\$291,753
State Compensatory	State	\$112,745.86
State Compensatory FTEs	State	2

Comprehensive Needs Assessment Summary

Pleasant Grove Intermediate School 2024-2025

Focus Areas

Pleasant Grove Intermediate School will provide a well-planned and intentional curriculum to better prepare students for their future while fostering a safe and orderly learning environment.

- Intentional instructional program
- Implement a balanced literacy approach
- Safe and conducive learning environment

Demographics

Demographics Summary

Pleasant Grove Intermediate School (PGIS) was established in 2011. Approximately 520 students in grades 3rd, 4th, and 5th compose the campus student group. The student population is 65% White, 14% African American, 10% Hispanic, 7% Multi-Race, 4% Asian, and 44% of these students are classified as economically disadvantaged. Staff demographics include 45 total staff members, of which 35 are certified professionals. PGIS is comprised of a head principal, an assistant principal, a counselor, a campus learning coordinator, 35 appropriately certified teachers, one nurse aide, two secretaries, seven highly qualified paraprofessionals, and one custodial staff members.

Demographics Strengths

- Recognition of individual differences among students
- Numerous experienced teachers in place

Demographic Needs

- Transfer students into the district may not have the same educational background as students who have been educated in the district for several years.
- Ensure progress for each student to achieve Advanced Academic Performance in Student Achievement, Student Progress, Closing Performance Gaps and Post-secondary Readiness among each demographic group.

Student Achievement

Student Achievement Summary

Curriculum, instruction, assessments, and professional practices are monitored and adjusted systematically in response to student information and data from multiple sources.

Student Achievement Strengths

- The use of Collaborative Team Meetings and data analysis has given PGIS a reputation for high levels of achievement. In order to continue a high level of achievement, Pleasant Grove Intermediate will continue the utilization of data analysis and extend CTM's from grade level to content area. Along with having 100% appropriately certified professional staff, our campus has also made notable achievements in several other areas.

Student Achievement Needs

- Since transfer students into the District may not have the same educational background as students who have been educated in the district for several years interventionists are needed to provide accelerated instruction.
- Student Attendance
- Ensure progress for each student to achieve Advanced Academic Performance in Student Achievement, Student Progress, and Closing Performance Gaps and Post-secondary Readiness among each demographic group.
- Improve student achievement and monitor student progress in grades 3 through 5 in core subjects of the state Texas Essential Knowledge and Skills. (TEKS)
- Improve STAAR performance for Science, 5th Grade Math, Special Education and ELL.
- SpEd student performance is lower than the campus average. SpEd students will need access and exposure to grade level instruction to continue to close the performance gap.

Culture & Climate

Culture & Climate Summary

Hawk pride is emphasized throughout the year during morning announcements, during special programs and in good character recognition. Students and teachers alike support and check behaviors to encourage good choices and emphasize our core values: Safe, Respectful, Responsible. Teachers understand building relationships with PGISD students is imperative to their success. This is achieved through ongoing communication with both students and parents/guardians. Our Meet the Teacher is well attended and parents are invited throughout the year to have lunch with their children. Parent volunteers are readily available and are welcomed to assist in daily activities. Our district nurse team has provided general training for Diabetes, allergens, general care and assistance to teachers for safely dealing with common medical issues at school. Additionally, PGIS drills will be built into the school crisis drill schedule. Pleasant Grove Intermediate is a well maintained building. It is aesthetically pleasing inside and out. The custodial staff takes pride in its appearance. We are thankful for our partnerships with parents and the community. Overall students are striving to be successful and students seem to feel safe.

Culture & Climate Strengths

- Targeted School-wide Behavior Instruction (One Team)
- Extracurricular participation
- Counseling
- Relationships between teachers and students

Culture & Climate Needs

- Provide more opportunity to seek student input
- Further opportunities to seek staff input
- Building and sustaining leadership capacity among staff and students

Staff Quality, Recruitment and Retention

Staff Quality, Recruitment and Retention Summary

Our campus employees are currently all certified. Teachers are evaluated using T-TESS data from formal and informal observations. Data from walk throughs will also be used to measure and maintain high quality instruction. Professional development is encouraged and supported in specific areas of need for student/subjects assigned. Our new teachers have multiple layers of support beginning with partner teachers in grade level/subject areas. Planning/strategy support is provided through daily Collaborative Team Meetings. Professional development is provided for areas of concern as well as current and innovative strategies provided for all staff for continuous improvement. PGIS maintains a teacher/student ratio of 22:1.

Staff Quality, Recruitment and Retention Strengths

- Assigned mentors
- Collaborative Team Meetings
- Growing and promoting within our district
- Leadership and Master's Degree stipends

Staff Quality, Recruitment and Retention Needs

- In order to keep teachers current on the latest instructional techniques through professional learning opportunities the district will need to maintain Region 8 professional development contacts.
- Building leadership capacity

Curriculum and Instruction

Curriculum and Instruction Summary

Pleasant Grove schools are committed to the general philosophy that education should provide appropriate learning experiences for every child within the district. Experiences provide for each child to continually develop and improve--emotionally, physically, morally, socially, and intellectually. Pleasant Grove I.S.D. acknowledges that the student of today will live in a society demanding knowledge and skills related to the use of computers and other technologies. Evidence indicates that the district's schools are committed to the development of the "whole" child. The curriculum is in a state of continuous study and revision, readily adaptable to meet the changing needs of children and provide a foundation of knowledge. Methods of instruction reflect recognition of individual differences among students. Instruction equips students with real world work skills, human relations skills, respect for authority, and appreciation of our American heritage and other world cultures, knowledge of how and where to obtain needed information, and an understanding of computers and other technologies which will enable them to function in an ever changing world. Well-trained and highly competent staff members take pride in their professional commitment to the intellectual, social, and moral development of school children. Continuous staff development and professional growth experiences are encouraged. Discipline is considered vitally important to a vigorous educational program. Overall, the school's efforts are directed to the end that each student will become a productive citizen, capable and desirous of making a definite and positive contribution to the society and to himself/herself.

Curriculum and Instruction Strengths

- The intermediate school curriculum continues to adapt to our student's ever changing needs. The overall curriculum provides our students equitable and challenging learning experiences that ensure each student will have sufficient opportunities to learn, think, and apply life skills that will impact future success. The goals of our campus were achieved through thoughtful planning, which thoroughly aligned with the district's mission. All classrooms are equipped with Interactive Panels, document cameras, one-to-one Chromebook ratios, teacher laptops, and other educational software, all of which contribute to the production of high- achieving students. In efforts to further improve student progress and monitor all data, the entire Pleasant Grove Independent School District continues to use Eduphoria, an effective data management software. Along with improving the monitoring of data, our campus is taking several approaches to improve student attendance rates, which include: parent letters, phone calls, and monitoring attendance rates on a daily basis.

Curriculum and Instruction Needs

- Implement balanced literacy approach to ensure all students are reading on grade level by 2025.
- Challenge and prepare students for the next level of education and beyond to meet their full potential, utilizing a well-balanced and appropriate curriculum.
- Increase in progress measure for all SPED in all subpopulations

Family and Community Involvement

Family and Community Involvement Summary

PGISD's mission statement and other vital information is disseminated to all stakeholders through school websites, school publications, in-service programs, and student/parent orientations. Parent input is solicited for evaluation and decisions regarding class offerings, policies and procedures. PG Education Foundation, PG Connection, Campus-Level Planning and Decision-Making Committee, all provide meaningful roles in the support and educational impact on our students. Students and parents have access to all grade-related policies, procedures, and a "live" gradebook that is accessible by students and parents. Classroom teachers, counselors, and other campus organizations utilize social media to showcase and share upcoming events.

Family and Community Involvement Strengths

- PG Education Foundation
- PG Connection
- Blackboard Parent Notification System
- Online Gradebook & TeacherEase
- Remind 101
- Class Dojo

Family and Community Involvement Needs

- Further partnerships between students, parents, the community, and business
- Maintain all methods of school communication

School Organization

School Organization Summary

The master schedule allows for RTI (response to interventions) within the school day as remediation for all students. This time allows for Tier 2 & Tier 3 interventions in language arts (reading and writing) and math. Dyslexia programs are served during this time as well. Teachers are allowed to work with a small group of academically weak students while a large portion of their class attends other academic challenges to enhance performance of all students. This creative schedule resulted from teacher recommendations and data analysis for grouping and instructing. The groups are evaluated after each universal assessment (usually a unit assessment) for adjustments and fluid student instruction. We have devoted 120 minutes daily to each grade level's Reading/Language Arts block. All grade level staff members utilize a 45 minute collaborative team planning time daily in addition to a 45 minute conference period.

School Organization Strengths

- Master schedule that maximizes instructional time and provides for flexible scheduling of special programs
- Daily 45 minute collaborative team meeting time for grade level instructional planning
- Tier 2 and Tier 3 allows the opportunity for student specific instruction based on individual data

School Organization Needs

- Further the use of data to accelerate instruction
- Implement technology into the activity rotation

Technology

Technology Summary

The intermediate campus has Wi-Fi that completely covers the campus and the parking lot. Teacher laptops are utilized to enable flexibility and collaboration. All students have access to a Chromebook through classroom carts. Teachers have access to a Chromebook management system to ensure devices are focused on learning. Teachers utilize an online classroom tool, Google Classroom, to accentuate instruction. All students attend a technology elective course on a four day rotation in which they receive instruction based on typing, programs, and coding.

Technology Strengths

- Teachers have embraced newly acquired technology to support learning and improve learning outcomes.
- All teachers are using Google Classroom.
- Campus administrators are proponents of using technology in the classroom as an instructional resource to improve student learning.
- Staff is motivated to explore new digital resources and how they can be used for differentiation among learners.
- The campus embraces technology for parent and stakeholder communication.
- Teachers utilize web-based assessment and data management tools to monitor student learning and to make instructional decisions.
- All students and staff have access to the G Suite for K-12 Education tools.
- Instructional staff and leadership have access to web-based TEKS Resources for curriculum management and planning.
- District-wide use of web-based Euphoria streamlines lesson planning, professional learning, Technology Help Desk and Maintenance/Travel requests

Technology Needs

- Continued job-embedded professional learning to support teacher growth and development and to build capacity about how to use digital tools for instructional support.
- Technology resources and professional learning that supports experiential learning environments and builds capacity for integrating various learning opportunities.
- Content-specific digital tools and resources to support core and elective classes.
- Some technology is in need of updating to continue to keep up with the every changing technology supports.

Pleasant Grove Intermediate

- Goal 1.** Increase academic achievement for all students while closing the gap between student populations to ensure high levels of learning.
- Objective 1.** The percent of students that score meets or above on STAAR Reading to 83% by June 2024. The percent of students that score meets or above on STAAR Math to 80% by June 2024. The percent of students that score meets or above on STAAR Science to 75% by June 2024.
 - Objective 2.** Monitor and ensure 98% attendance for all students.
 - Objective 3.** 100% of Pleasant Grove Intermediate School teachers will be appropriately certified.
- Goal 2.** Increase parent and family engagement to 90% through informing and engaging students, teachers, parents and the community regarding the educational priorities, processes, initiatives and challenges of the campus.
- Objective 1.** Seek out, recruit, and increase parent and family involvement for all student populations with emphasis on underrepresented population.
 - Objective 2.** Provide a welcoming environment wherein timely information is provided to increase parent and family engagement for all student groups.
- Goal 3.** Provide a healthy, safe, physical and emotional environment with a goal of no safety violations.
- Objective 1.** Implement and maintain the campus emergency management plan.
 - Objective 2.** Provide a coordinated health program with a goal of 90% of campus students meeting the Fitness Gram standards for healthy students.

Pleasant Grove Intermediate

Goal 1. Increase academic achievement for all students while closing the gap between student populations to ensure high levels of learning.

Objective 1. The percent of students that score meets or above on STAAR Reading to 83% by June 2024. The percent of students that score meets or above on STAAR Math to 80% by June 2024. The percent of students that score meets or above on STAAR Science to 75% by June 2024.

Activity/Strategy	Person(s) Responsible	Timeline	Resources	Evaluation
1. F2. Federal, state, and local resources will be coordinated and integrated to support RTI, including a Title 1 interventionist, dyslexia therapists, and appropriate materials. (Target Group: All)	Assistant Principal(s), Principal	August, January	(L)Local Funds	Criteria: Formative - Summative - Campus Budget
2. S3 & F3. The CTM room will be used for collaborative decision making that drives instruction and results in increased student achievement for all student groups, including at-risk students, homeless students, students in foster care, gifted and talented students from major racial and ethnic groups, children with disabilities and English learners to ensure all students meet challenging state academic standards. (Target Group: All)	Assistant Principal(s), Principal, Teacher(s)	Semester	(L)Local Funds	Criteria: Formative - Benchmarks, Nine Week Marking Period Grades Summative - STAAR Results
3. S4. All teachers will engage in Collaborative Team Meetings(CTMs) daily to ensure alignment at each grade level. CTMs will involve disaggregating TEKS and data, lesson planning and aligning strategies to ensure all students meet the challenging state standards. Campus administrator/s are present during each CTM. (Title I TA: 3) (Target Group: All)	Assistant Principal(s), Principal	Semester	(L)Local Funds	
4. S10 & F6. All teachers will engage in the continuous improvement process and systemically monitor the fourteen student groups to ensure students meet their targets in the Closing the Gap domain. (Target Group: All) (Strategic Priorities: 2) (CSFs: 1)	Assistant Principal(s), Counselor(s), Principal	Nine Weeks	(L)Local Funds	Criteria: Formative - Grades Summative - STAAR results
5. S15. All teachers will attend professional training to learn about state accountability measures for all student populations to ensure all student groups perform at high levels and show growth on the STAAR test. (Title I TA: 5,6) (Target Group: All)	Assistant Principal(s), Principal	October	(L)Local Funds	
6. F6 & F4. Response to Intervention (RTI)	Assistant Principal(s), Principal	Every nine weeks	(L)Local Funds, (S)State	

Pleasant Grove Intermediate

Goal 1. Increase academic achievement for all students while closing the gap between student populations to ensure high levels of learning.

Objective 1. The percent of students that score meets or above on STAAR Reading to 83% by June 2024. The percent of students that score meets or above on STAAR Math to 80% by June 2024. The percent of students that score meets or above on STAAR Science to 75% by June 2024.

Activity/Strategy	Person(s) Responsible	Timeline	Resources	Evaluation
procedures, including a Tier 2 and Tier 3 period, will be in place to extend learning time and provide an enriched and accelerated curriculum to address the needs of those at risk of not meeting the challenging state academic standards. (Title I TA: 4) (Target Group: All)			Compensatory	
7. S15. Increase Meets and Masters percentages by providing ongoing professional learning and coaching for 3-5 teachers. The focus will be on developing a deep understanding of TEKS, improving assessment practices, and planning for learning for all student groups. (Title I SW: 4)	Assistant Principal(s), Principal, Teacher(s)	Semester	(L)Local Funds	
8. S1. Campus level committee will enhance formative assessment practices through improved assessment design and analyzation to provide data for student monitoring and timely adjustments to curriculum. (Title I SW: 3) (Target Group: All) (Strategic Priorities: 2) (CSFs: 1,2)	Assistant Principal(s), Principal	Every nine weeks	(L)Local Funds	
9. Align professional learning practices to TTESS to grow and improve teacher practice and enhance student learning. Campus Learning Coordinator will provide job-embedded professional learning for all staff to improved teacher practice and to enhance student learning. (Title I SW: 3,4,5) (Title I SW Elements: 1.1,2.5) (Target Group: All) (Strategic Priorities: 1) (CSFs: 7)	Assistant Principal(s), Principal	Semester	(L)Local Funds, (L)Regular Ed Program(L), (S)State Compensatory	
10. F3. A balanced literacy model with an emphasis on Guided Reading will be implemented and will align with PK-2 reading instruction. Progress measuring tools will be used 3-5 to assess students' reading development and used to plan for instruction to	Assistant Principal(s), Director of Instruction, Principal	August, January, April	(L)Regular Ed Program(L), (L)Special Education(L)	

Pleasant Grove Intermediate

Goal 1. Increase academic achievement for all students while closing the gap between student populations to ensure high levels of learning.

Objective 1. The percent of students that score meets or above on STAAR Reading to 83% by June 2024. The percent of students that score meets or above on STAAR Math to 80% by June 2024. The percent of students that score meets or above on STAAR Science to 75% by June 2024.

Activity/Strategy	Person(s) Responsible	Timeline	Resources	Evaluation
meet the needs of all student populations. (Title I SW: 4) (Target Group: All) (Strategic Priorities: 2) (CSFs: 1,2)				
11. F3. K-12 writing expectations will be aligned across the district. RLA teachers will collaboratively define and publish grade level expectations. During CTMs teachers will review writing samples and calibrate for consistency. Digital tools will be utilized when appropriate. (Target Group: All)	Assistant Principal(s), Principal	August, January	(L)Local Funds	Criteria: Summative - Published grade level expectations
12. F3. Increase percentage of 3rd-5th grade students who score Meets or Masters from 88% to 89% by July of 2024 by monitoring improvement in student achievement for all student populations, ensuring vertical and horizontal alignment of curriculum, staff (including interventionist) disaggregation of student data, and collaborative planning during CTMs to design units/lessons and to identify effective instructional strategies and resources. (Target Group: All) (Strategic Priorities: 2) (CSFs: 1,2)	Assistant Principal(s), Principal	Every nine weeks	(L)Regular Ed Program(L)	
13. F6. Students who are identified as not making satisfactory progress on grade level curriculum in reading and math will be provided with Tier 2 intervention during the school day. (Target Group: All)	Principal	Semester	(F)Title I, Part A	
14. F6. Students who are identified as not on grade-level curriculum in reading and math will be provided with intensive Tier 3 intervention during the school day.	Principal	Semester	(F)Title I, Part A, (S)State Compensatory	
15. F5. A comprehensive needs assessment will be conducted by the Campus Site-Based Committee to identify educational strengths and weaknesses in student performance, school culture and climate, staff quality,	Principal	September	(L)Local Funds	

Pleasant Grove Intermediate

Goal 1. Increase academic achievement for all students while closing the gap between student populations to ensure high levels of learning.

Objective 1. The percent of students that score meets or above on STAAR Reading to 83% by June 2024. The percent of students that score meets or above on STAAR Math to 80% by June 2024. The percent of students that score meets or above on STAAR Science to 75% by June 2024.

Activity/Strategy	Person(s) Responsible	Timeline	Resources	Evaluation
curriculum and instruction, family and community involvement, school context and organization, and technology. (Title I SW Elements: 1.1) (Target Group: All)				
16. All students will be assessed three times per year using a standard math test, Map Growth. Results will be used to assign students to extension learning groups, enrichment math groups, or to receive advance math instruction and/or practice. (Title I SW Elements: 1.1) (Target Group: GT,3rd,4th,5th)	Principal	August, May	(F)Title IV	Criteria: Assessment results, lesson plans, math extension group rosters

Pleasant Grove Intermediate

Goal 1. Increase academic achievement for all students while closing the gap between student populations to ensure high levels of learning.

Objective 2. Monitor and ensure 98% attendance for all students.

Activity/Strategy	Person(s) Responsible	Timeline	Resources	Evaluation
1. Monitor and observe attendance thoroughly throughout the year on all students; each grading period students who miss more than ten percent of school will receive a letter to be sent home and signed. (Title I SW Elements: 2.2) (Title I TA: 1,4,5) (Target Group: All)	Assistant Principal(s), Principal	Every nine weeks	(L)Local Funds	
2. Give incentives/awards to students who do not miss any days. This would be given each grading period and at the end of each year. (Target Group: All)	Assistant Principal(s), Principal	May	(L)Regular Ed Program(L)	

Pleasant Grove Intermediate

Goal 1. Increase academic achievement for all students while closing the gap between student populations to ensure high levels of learning.

Objective 3. 100% of Pleasant Grove Intermediate School teachers will be appropriately certified.

Activity/Strategy	Person(s) Responsible	Timeline	Resources	Evaluation
1. Current partnerships with outside agencies to recruit certified staff will be maintained and new partnerships will be sought. (Target Group: All) (Target Group: All)	Director of Instruction	Spring and Summer Semesters	(L)Local Funds	
2. To encourage new teacher recruitment, education students from local colleges will be allowed to conduct observations and student teaching activities. (Target Group: All) (Target Group: All)	Assistant Superintendent of Learning Services, Principal	May	(L)Local Funds	
3. Appropriately certified teachers and highly qualified paraprofessionals will be sought to fill vacancies. The electronic application system will be utilized to help find quality applicants. (Target Group: All)	Principal	May	(L)Local Funds	
4. New teacher cohorts will be in place to ensure a successful integration into the school system.	Assistant Superintendent of Learning Services	August and January	(L)Local Funds	Criteria: Formative - Sign-in sheets for cohort meeting Summative - Staff certification records
5. S15. Provide professional development opportunities in the core curriculum Advanced Placement, Dyslexia, Gifted and Talented, ESL, Fine Arts strands, technology integration and research based instructional strategies to attract and maintain a highly qualified and innovative staff. (Target Group: All)	Assistant Principal(s), Assistant Superintendent of Learning Services, Principal	August	(F)Title I, Part A, (F)Title II, Part A	Criteria: Summative - Professional Development Certificates
6. F2 & S5. All Mainstreamed Special Education students will be supported by the General Education Teachers, Special Education Teachers and Special Education Paraprofessionals who will assist in core academic classrooms. Resources will include using federal, state, and local services. Special Education teachers will coordinate and integrate instruction with the general education	Director of Special Programs, Principal	May	(F)IDEA-B Special Education, (S)Special Education	

Pleasant Grove Intermediate

Goal 1. Increase academic achievement for all students while closing the gap between student populations to ensure high levels of learning.

Objective 3. 100% of Pleasant Grove Intermediate School teachers will be appropriately certified.

Activity/Strategy	Person(s) Responsible	Timeline	Resources	Evaluation
reading and math teachers to provide aligned instruction with reading, math and all other teachers. (Target Group: SPED) (Strategic Priorities: 2)				

Pleasant Grove Intermediate

Goal 2. Increase parent and family engagement to 90% through informing and engaging students, teachers, parents and the community regarding the educational priorities, processes, initiatives and challenges of the campus.

Objective 1. Seek out, recruit, and increase parent and family involvement for all student populations with emphasis on underrepresented population.

Activity/Strategy	Person(s) Responsible	Timeline	Resources	Evaluation
1. Continue to increase our volunteer base and engage and utilize our volunteers in appropriate meaningful ways. (Title I TA: 7) (Target Group: 3rd,4th,5th)	Assistant Principal(s), Director of Marketing and Communications, Principal	August	(L)Local Funds	
2. S12. Parent meetings will be held to provide parents with additional support, information and training on how to assist students with homework, school projects and promotion requirements. (Title I TA: 7) (Target Group: All)	Assistant Principal(s), Principal	January	(L)Local Funds	
3. Teachers will begin the year making a positive phone call to welcome students to a new year. (Title I SW: 6) (Target Group: All) (Strategic Priorities: 2,4) (CSFs: 5,6)	Assistant Principal(s), Principal	August	(F)Title I, Part A, (L)Regular Ed Program(L)	
4. Parent/teacher conference will be held at least one time per year and then as needed. (Target Group: All)	Assistant Principal(s), Principal	October	(L)Local Funds	Criteria: Summative - Parent conference log
5. Invite grandparents/grand-friends to Grandparent Activities. (Target Group: All)	Assistant Principal(s), Principal	November	(L)Local Funds	Criteria: Summative - Sign-in sheets
6. PGIS will engage and develop strategies and communication, including providing interpreters, to increase parent engagement of ESL families. (Target Group: ESL) (Strategic Priorities: 2)	Principal	August	(S)Bilingual/ESL	

Pleasant Grove Intermediate

Goal 2. Increase parent and family engagement to 90% through informing and engaging students, teachers, parents and the community regarding the educational priorities, processes, initiatives and challenges of the campus.

Objective 2. Provide a welcoming environment wherein timely information is provided to increase parent and family engagement for all student groups.

Activity/Strategy	Person(s) Responsible	Timeline	Resources	Evaluation
1. S17. Continue to develop the process for clear communication within our campus and community to improve parent and family engagement through the use of marquee, social media, web page, parent notification system, parent meetings and Facebook. (Title I SW Elements: 3.1) (Target Group: All)	Assistant Principal(s), Principal	August		
2. Develop a process for media coverage of school events and accomplishments using multiple platforms including website, Facebook, Class Dojo and Remind 101. (Target Group: All)	Assistant Principal(s), Principal	August	(L)Local Funds	
3. Establish systematic communication measures to community, parent, and staff regarding the recommendations of the campus site-based committee. (Target Group: All)	Assistant Principal(s), Principal	August	(L)Local Funds	Criteria: Summative - Communication Plan

Pleasant Grove Intermediate

Goal 3. Provide a healthy, safe, physical and emotional environment with a goal of no safety violations.

Objective 1. Implement and maintain the campus emergency management plan.

Activity/Strategy	Person(s) Responsible	Timeline	Resources	Evaluation
1. Safety drills (fire, shelter, hold, secure, evacuate, and lockdown) will be conducted and evaluated throughout the school year as administration and staff reflect upon and implement improvements as needed. (Title I TA: 8) (Target Group: All)	Assistant Principal(s), Director of Operations, Principal	May	(L)Local Funds	
2. Raptor Technologies will be maintained for school security to protect students and faculty. (Target Group: All)	Assistant Principal(s), Principal, School Resource Officer	August	(L)Local Funds	
3. Maintain school badge security system (Target Group: All)	Assistant Principal(s), Director of Operations, Principal	August	(L)Regular Ed Program(L)	
4. S11. The counselor/school resource officer will conduct violence prevention training sessions with students and staff concerning violence prevention education. (Target Group: All)	Assistant Principal(s), Counselor(s), Principal, School Resource Officer	Yearly	(L)Local Funds	

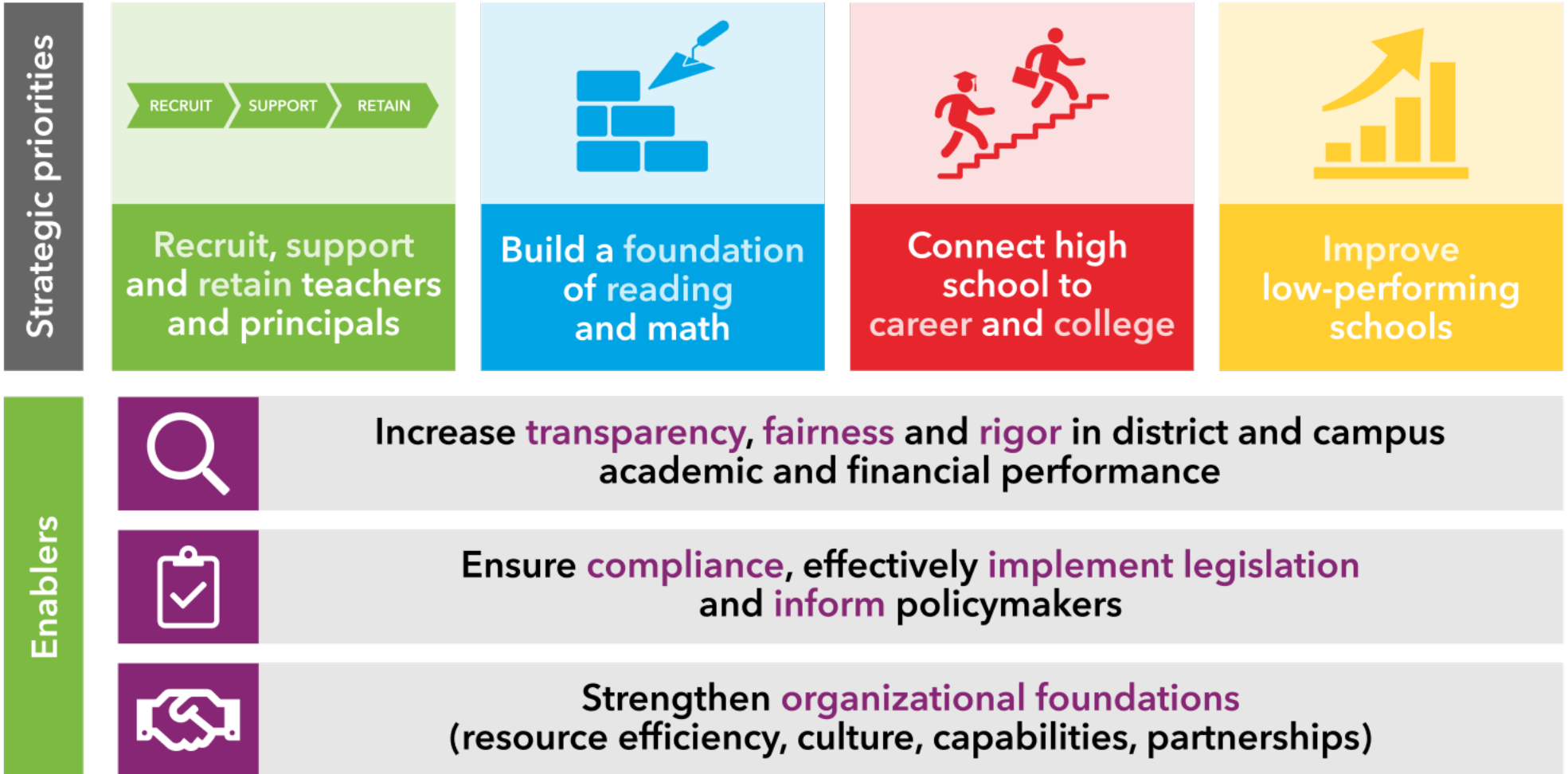
Pleasant Grove Intermediate

Goal 3. Provide a healthy, safe, physical and emotional environment with a goal of no safety violations.

Objective 2. Provide a coordinated health program with a goal of 90% of campus students meeting the Fitness Gram standards for healthy students.

Activity/Strategy	Person(s) Responsible	Timeline	Resources	Evaluation
1. Fitness Gram will be administered once each year and data will be entered into Fitness Gram by the PE teacher and reported to the state. (Target Group: All)	Assistant Principal(s), Coaches, Principal	April	(L)Local Funds	
2. The master schedule will include 45 minutes of physical education five times per week. (Target Group: All)	Assistant Principal(s), Coaches, Principal	August	(L)Local Funds	
3. Students will be taught lessons on fitness, nutrition, personal health care, drug/alcohol prevention, violence prevention and safety. (Target Group: All)	Assistant Principal(s), Coaches, Counselor(s), Principal	January, May	(L)Local Funds	
4. S13. Coordinated health program will be utilized to meet campus health goal. (Target Group: All)	Assistant Principal(s), Principal	March	(L)Local Funds	Criteria: Formative - Lesson Plans Summative - End of Year Assessment

Every child, prepared for success in college, a career or the military.



**adapted from TEA Strategic Plan - <https://tea.texas.gov>*

**Pleasant Grove Intermediate School
Parent-Family Engagement Policy
2024-2025**

<p>What is it?</p>	<p>Pleasant Grove Intermediate School is committed to our mission to ensure high-levels of learning for all students and preparing the whole child for success. We do this by aligning our policies, programs and practices to reflect the commitment to ensuring high levels of learning for all students. One way we continue to do this is by participating in the Title I, Part A State Program. This program provides funding for low socioeconomic schools. In return, we promise to meet the expectations laid out for us by the Texas Education Agency and the United States Department of Education.</p>
<p>Expectations and Objectives</p>	<p>Parents and families are a child's first teacher. They imitate you from the moment they are born. Therefore, a mutually beneficial relationship between school and home is in the best interest of every child. The expectation of our PFE Program is to foster communication and decision-making with parents about student performance and to collaboratively support learning. Our objectives are:</p> <ul style="list-style-type: none"> ● Effective two-way communication between school and home which is linked to a higher completion rate on work, better attention during instructional tasks, increased participation by all parties, and improved interactions and relationships between parents, teachers, and students. <p>We believe:</p> <ul style="list-style-type: none"> ● If a child's parents are more involved in school experiences, the child is more likely to have higher grades, improved behavior, better attendance, higher social skills, and adaption. ● Learning together leads to better school and home life. ● Being a life-long learner can prevent some health issues that often occur later in life.
<p>PGIS will:</p>	<p>To engage more parents in our school community, PGIS will:</p> <ul style="list-style-type: none"> ● Include parents in the development of our Parent Family Engagement Plan through campus meetings and parent surveys.. ● Distribute the PFE Policy, this document, to parents and the communities by: <ul style="list-style-type: none"> ○ Posting it on our district website, and keeping it up to date ○ Distributing printed copies to local businesses ○ Distributing printed copies and QR codes to the electronic version at all the school's annual meetings ○ Have a district representative at every school's annual Title I meeting ○ Have a district representative at every school PFE event ○ Per request, provide the qualifications of a child's teacher ○ Conduct evaluations of every PFE event at each school,

	<ul style="list-style-type: none"> ○ collect that data and review that information with the school ○ Assist schools in the evaluation and revision of their PFE policy and school-parent ○ Evaluate the Campus Parent and Family Program and its policy throughout the year and revise it as needed ○ Provide training to district employee on the most effective PFE strategies
<p>Parent Events:</p>	<p>To assist parents in navigating the school system, the following parent training opportunities will be provided:</p> <ul style="list-style-type: none"> ● Meet and Greet on every campus ● Campus Literacy Events ● Campus Math Events ● Veterans Day Celebration ● Thanksgiving Lunches ● Classroom Parties ● PG Connection ● PGIS End of Nine Week Celebration Days ● School Musical ● Campus Art Nights with exhibits ● Parent-Teacher Conferences ● Title I meetings on Title I campuses

**Pleasant Grove Independent School District
Parent-Family Engagement Policy
2024-2025**

<p>What is it?</p>	<p>Pleasant Grove Independent School District is committed to our mission to ensure high-levels of learning for all students. We do this by aligning our policies, programs and practices to reflect the commitment to ensuring high levels of learning for all students. One way we continue to do this is by participating in the Title I, Part A State Program. This program provides funding for low socioeconomic schools. In return, we promise to meet the expectations laid out for us by the <u>Texas Education Agency</u> and the <u>United States Department of Education</u>.</p>
<p>Expectations and Objectives</p>	<p>Parents and families are a child's first teacher. They imitate you from the moment they are born. Therefore, a mutually beneficial relationship between school and home is in the best interest of every child. The expectation of our PFE Program is to foster communication and decision-making with parents about student performance and to collaboratively support learning. Our objectives are:</p> <ul style="list-style-type: none"> ● Effective two-way communication between school and home which is linked to a higher completion rate on homework, better attention during instructional tasks, increased participation by all parties, and improved interactions and relationships between parents, teachers, and students. <p>We believe:</p> <ul style="list-style-type: none"> ● If a child's parents are more involved in school experiences, the child is more likely to have higher grades, improved behavior, better attendance, higher social skills, and adaption. ● Learning together leads to better school and home life. ● Being a life-long learner can prevent some health issues that often occur later in life.
<p>PGISD will:</p>	<p>To engage more parents in our school community, PGISD will:</p> <ul style="list-style-type: none"> ● Include parents in the development of our Parent Family Engagement Plan through campus meetings and parent surveys.. ● Distribute the PFE Policy, this document, to parents and the communities by: <ul style="list-style-type: none"> ○ Posting it on our district website, and keeping it up to date ○ Distributing printed copies to local businesses ○ Distributing printed copies and QR codes to the electronic version at all the school's annual meetings ○ Have a district representative at every school's annual Title I meeting ○ Have a district representative at every school PFE event ○ Per request, provide the qualifications of a child's teacher ○ Conduct evaluations of every PFE event at each school,

	<ul style="list-style-type: none"> ○ collect that data and review that information with the school ○ Assist schools in the evaluation and revision of their PFE policy and school-parent ○ Evaluate the District Parent and Family Program and its policy throughout the year and revise it as needed ○ Provide training to every district employee on the most effective PFE strategies
Parent Events:	<p>To assist parents in navigating the school system, the following parent training opportunities will be provided:</p> <ul style="list-style-type: none"> ● Meet and Greet on every campus ● Campus Literacy Events ● Campus Math Events ● High School FAFSA information ● Secondary School course selection ● Campus Art Nights with exhibits ● Parent-Teacher Conferences ● Title I meetings on Title I campuses (MFDES and PGIS)