

Pleasant Grove Middle School

Campus Improvement Plan

2024/2025



Leah Sams
5605 Cooks Lane
903-831-4295
lsams@pgisd.net

Date Reviewed:

DMAC Solutions ®

Page 1 of 33

Date Approved:

10/29/2024

Mission:

The mission of the Pleasant Grove Middle School is to ensure high levels of learning for all students and staff to successfully prepare our students for high school.

Vision:

The students and staff of PGMS will ensure a culture of continuous learning for all. The staff will support the development of the whole child in a safe and nurturing environment, so our students will have the knowledge and skills necessary to pursue their goals and dreams.

Collective Commitments:

In order to achieve our shared mission and vision, we have made the following collective commitments. We will work in collaborative teams to...

- Implement a guaranteed and viable curriculum, unit by unit for core classes.
- Monitor student learning through an ongoing assessment process that includes frequent, team-developed common formative assessments.
- Use the results of common assessments to improve practice, achieve goals, and intervene on priority standards.
- Provide a systematic process for intervention and extension.

Shared Beliefs

1. What is it we want our students to learn?
2. How will we know if each student has learned it?
3. How will we respond when some students do not learn it?
4. How can we extend and enrich the learning for students who have demonstrated proficiency?

Site-Based Decision-Making Committee

Name	Position
Sams, Leah	Principal
Maxey, Amy	Associate Principal
DeLoach, Kristi	District Administrator
Wages, Mike	Business Representative
Stanfill, Quinn	Community Representative
Timmons, Taylor	Teacher
Browning, Christal	Parent Representative
Norman, Chandler	Teacher
Hughes, Ashton	Parent Representative
McCloud, Jenny	Teacher
Martin, Dodie	Teacher
Johnson, Karen	Special Education Teacher
Baker, Kristen	Paraprofessional

Pleasant Grove Middle School Resources

Resource	Source	Amount
IDEA-B Special Education	Federal	\$187,905
Regular Ed Program(L)	Local	\$2,660,020
Special Education	State	\$243,089
State Compensatory	State	\$155,025.56

Comprehensive Needs Assessment Summary

Pleasant Grove Middle School 2024-2025

Focus Areas

Pleasant Grove Middle School will provide a well-planned and intentional curriculum to better prepare students for their future while fostering a safe and orderly learning environment.

- **Intentional instructional program**
- **21st century learning opportunities through a STEAM based approach**
- **Safe and conducive learning environment**

Demographics

Demographics Summary

Pleasant Grove Middle School (PGMS) is located in northwest Texarkana about a half-mile north of Interstate 30. PGMS, a medium-sized Texas 4A district, houses approximately 529 students in grades 6th, 7th, and 8th (based on 2023 TAPR) that comprise the campus student group. The student population is 66.9% White, 16.26% African American, 8.13% Hispanic, 4.91% Multi-Race, 3.21% Asian, and 40.08% of these students are classified as economically disadvantaged. Staff demographics include 63 total staff members, of which 48 are certified professionals. PGMS consists of a head principal, an associate principal, dean of students, a counselor, a nurse, two secretaries, three paraprofessionals.

Demographics Strengths

- Recognition of individual differences among students

Demographic Needs

- Monitor and adjust curriculum, instruction, assessments, and professional practice systematically in response to student information and data from multiple assessments of student learning.
- Ensure progress for each student to achieve Advanced Academic Performance in Student Achievement, Student Progress, Closing Performance Gaps and Post-Secondary Readiness among each demographic group.

Student Achievement

Student Achievement Summary

PGMS received a Met Standard Rating. Students who are receiving support through Math and Reading Academies, Response to Intervention (RTI), Section 504, identified Dyslexic, or Special Education are making progress measures. However, all students have not met the state guidelines for the state assessments which also creates gaps between subgroups. Examples of software available: Lexia and Progress Learning will be implemented on a regular basis. Our student achievement has remained around the same percentage point for the last few years, and we have a gap between our subgroups. We will increase monitoring and analyzing all students through our state assessment data, end-of-the-year reports, DMAC Software to schedule students in appropriate classes. Star Renaissance is provided to students three times a year to progress monitor student reading levels.

Our campus will administer pre-assessments within the first three weeks of the school year to determine a baseline of learning. Throughout the year, common assessments, and RTI data will be analyzed to discover trends and formulate plans for individualized support. Student academic needs will be discussed during Professional Learning Communities (PLCs) and Leadership classes to monitor and adjust RTI levels throughout the year. Our RTI team consists of administrators, classroom teachers, and Special Education teachers. RTI pullout is offered throughout the day, and Academic Assistance is offered after school. Leadership classes will be offered everyday which will also encompass RTI. Reading and Math Academies are offered as an additional class for support.

Student Achievement Strengths

- Students have the opportunity to enroll in Algebra 1 as high school credit on the middle school campus and score almost 100% at the Masters' Level on state assessments
- In order to prepare students for Algebra 1 as an 8th grade student, we offer Consolidated Math for 6th grade and 7th grade. As a 7th grade student in consolidated math, you take the 8th grade STAAR.
- Approximately 22% of students in grade 8 receive the Academic Presidential Award certificate
- Approximately 45% percent of students in grade 7 are inducted into the National Junior Honor Society
- Students from grades 6, 7, and 8 excel in area writing competitions and advance to state levels. (DAR and local competitions)
- Students are able to attend events sponsored by Texarkana College and Texas A&M University

- PGMS students participate in Pre- Ap reading courses. areas and extracurricular areas in athletics and the Fine Arts
- Offer extracurricular in athletics and the Fine Arts
- We offer seven high school credit courses
- Students will have the opportunity to compete in Academic UIL this year and in the future

Student Achievement Needs

- Close the gaps in all subgroups in reading, math, writing, science, Social Studies, Special Education, and ESL (ELLs)
- Challenge and prepare our students for the future through innovative learning

Culture & Climate

Culture & Climate Summary

PGMS is full of excitement and learning. Student attendance is average for the year at 96.8% Teachers build relationships with all students and their families. Teachers attend extracurricular and personal events for students. Student Council guides a tour for incoming sixth graders during the previous spring semester before Meet the Teache.. Both events are held before the first day of school, Students Council, cheer, and drill help guide students throughout the campus. All incoming sixth grade students and new students to the campus have an opportunity to participate.

An analysis of our discipline data displays that about 90% of our discipline is implemented by about 5% of our students. We typically have a small percentage of students assigned to OSS and DAEP. Our campus has implemented campus wide expectations and procedures for the classrooms, hallways, cafeteria, and gyms.

We are implementing Leadership classes which will cover our Academic UIL practice times, scheduled RTI, Character Building and mentor monitoring. Even though most of our students feel safe on campus, we will initiate structure guidelines and continue to monitor discipline referrals with the aid of our Dean of Students position on campus.

We practice all safety drills as required by TEC code. We train our students in student assemblies and classrooms as well as staff members on how to respond accordingly during a crisis situation. Our teachers are notified of an emergency using the Raptor Application on their cellular phones. Drills are conducted using the Raptor App. We strive to offer our staff and students a safe and conducive learning environment.

Culture & Climate Strengths

- Fellowship and congeniality among all staff members on the middle school campus
- Strong, caring relationships between staff members and students
- Recognition and honor given to students and staff
- Student participation and staff attendance in extracurricular
- Presence of staff members and administrators in the halls between classes, before and after school in the common areas
- Parent and community involvement
- Celebration luncheons are held throughout the year for staff members
- Hawk Cart to drop off deliveries to teachers
- Spirit Awards among staff members
- Students who exemplify our core values are recognized by a “Squawk for the Hawk”

Culture & Climate Needs

- Provide a healthy, safe, and orderly environment conducive to learning
- Provide and seek opportunities for student input
- Building leadership among students
- Social media education students, parents, and staff

Staff Quality, Recruitment and Retention

Staff Quality, Recruitment and Retention Summary

Staff demographics include 63 total staff members, of which 48 are certified. PGMS consists of a head principal, an associate principal, an assistant principal, a counselor, a nurse, two secretaries, three paraprofessionals, a shared education diagnostician and a school resource officer.

Goal Setting and Professional Learning is offered through PGISD, T-TESS/T-PESS, and Region 8. Staff members participate in Professional Learning and are assigned a mentor to ensure a smooth transition. Continuous professional learning experiences are encouraged and offered to ensure the school’s vision is continually integrated in the classroom. Teachers engage in independent studies, certification programs, to collaborate and enhance the Professional Learning Community culture as part of their on-going culture and climate.

Staff Quality, Recruitment and Retention Strengths

- Professional Learning is held throughout the year for teachers to participate, bond, and collaborate
- All teachers are invited and encouraged to attend the Professional Learning Institute at Work training

- New Teacher cohort and assigned mentors
- PLC collaborative meetings daily
- Growing and promoting with in our district
- Leadership and Master's Degree stipends

Staff Quality, Recruitment and Retention Needs

- Authentic Professional Learning opportunities
- Mentor/Mentee program checks
- Continue to build leadership capacity
- Analyze programs that will ensure the campus and department needs are met in the best interest of our students

Curriculum and Instruction

Curriculum and Instruction Summary

Methods of instruction reflect recognition of individual differences among students. Teachers attend professional learning provided by PGISD staff members. Staff members receive updates in content areas, technology and special programs, and access resources to enhance curriculum and plan instruction. Services, directors, and teachers are available in the areas of learning, programs, Gifted and Talented, Dyslexia, English as a Second Language (ESL), and Special Education. Staff members assist with interventions and Student Service Plans. Staff members assist with interventions and Student Service Plans. School personnel may attend district, regional, state and/or nation training for additional support. Departmental planning sessions and Professional Learning Communities are scheduled for the purpose of monitoring, revising and implementing instructional strategies as teachers share and provide feedback to each other across grade levels. The use of differentiated instruction and consistent assessments of instructional strategies will help each student make progress.

Student information and data collected in each assessment area will be analyzed to implement improvements to individual programs to serve as a guide and determine areas of need for additional professional learning. Based on this information, students are offered academic assistance before, during, and after school tutoring, along with individualized instruction by campus interventionists. Math and Reading Academies or Tier 3 support is embedded during the school day for students who need additional support. The curriculum management system TEKS RS is available to assist as an instructional curriculum guide. Also, the Texas Teacher Evaluation and Support System, (T-TESS), and Professional Learning and innovative technology will help each student achieve progress in learning.

Curriculum and Instruction Strengths

Curriculum and instruction has been restructured into the Director of Learning Services department. Collaboration between campuses are working to align vertically, horizontally, and focus on individual student progress. All staff members are working to grow into leaders and assess data to make instructional sound decisions to improve every student's progress performances.

Curriculum and learning experiences in each course offered to staff members provide students with challenging and equitable opportunities to develop learning, critical thinking, and life skills. Educational gaps will be closed by continually addressing curriculum, instruction and growing through professional learning.

Curriculum and Instruction Needs

- Expand a STEAM based curriculum and collaborative approach
- Continued Professional Learning
- Goal-setting for staff and students
- Discipline Management
- Character Building
- Align instruction to assessments
- Productive and accomplished CTMs
- Improvement in all STAAR subgroups
- Increase in progress measure for all SPED and all SPED subgroups

Family and Community Involvement

Family and Community Involvement Summary

Pleasant Grove ISD's mission statement and other vital information is disseminated to all stakeholders through school websites, school publications, in-service programs, and student/parent orientations. Parent input is solicited for evaluation and decisions regarding class offerings, policies and procedures. PG Education Foundation, PG Connection, Booster Clubs, Campus-Level Planning and Decision-Making Committee, Leadership Texarkana and Junior Achievement all provide meaningful roles in the support and educational impact on our students. Students and parents have access to all grade-related policies, procedures, and gradebook that is accessible by students and parents. Classroom teachers, counselors, and other campus organization utilize social media to showcase and share upcoming events.

Family and Community Involvement Strengths

- Monthly Parent News Letters

- All core teachers communicate directly with parents using Remind App
- Kennedy Center partnership with TRAHC
- PG Education Foundation
- PG Connection
- Booster Clubs

Family and Community Involvement Needs

- Further partnerships between students, parents, the community, and business
- Increased parental involvement opportunities for parents

School Organization

School Organization Summary

The staff organization by subject area allows increased collaboration both vertically and horizontally on a daily basis. This structure increases the flexibility to adjust teaching strategies to meet diverse learning styles. The continued structure by department (not grade level) gives the students and staff opportunities to build a bond for the three years' students attend the middle school. Staff members can engage with students daily while between classes and as well as campus duties since staff and students remain outside the classroom between classes. Student group sponsors give students additional access to staff outside the classroom. The campus implements a written security and crisis management plan which includes emergency evacuation procedure and appropriate training for stakeholders. The campus monitors all financial transactions through an audited accounting system and engages in a continuous improvement process and implements an improvement plan.

School Organization Strengths

- Commitment of teachers to build relationships with students
- Pockets of teachers to monitor the progress of students

School Organization Needs

- Further use of instructional data to monitor student progress, curriculum and instruction
- Professional Learning for all staff members and leadership

Technology

Technology Summary

The middle campus currently has interactive televisions in every classroom. Math and Reading classrooms have document cameras. Our school offers a Dyslexia Lab, STEAM Lab, and Journalism Lab PGMS has thirty four Chromebook Carts of approximately 1-3 three years old, a Special Education Chromebook cart, Journalism Mac Lab , and ESL Chromebook cart of nine. All teachers and staff have access Linewize for network management, online safety, and classroom technology management. The campus has wifi access for district technology as well as guest wifi.

Technology Strengths

- Campus administrators are proponents of using technology in the classroom as an instructional resource to improve student learning.
- Staff is motivated to explore new digital resources and how they can be used for differentiation among learners.
- The campus embraces technology for parent and stakeholder communication.
- Teachers utilize web-based assessment and data management tools to monitor student learning and to make instructional decisions.
- All students and staff have access to the G Suite for K-12 Education tools.
- Instructional staff and leadership have access to web-based TEKS Resources for curriculum management and planning.
- District-wide use of web-based Euphoria streamlines lesson planning, professional learning, Technology Help Desk and Maintenance/Travel requests.
- Teacher mobile devices for collaboration and common planning.

Technology Needs

- Plan for technology refresh cycle to update existing end-of-life chrome books, and document cameras.
- Professional learning to support teacher growth and development and to build capacity about how to use digital tools for instructional support.
- Technology resources and professional learning that supports STEAM and MakerSpace learning environments and builds capacity for integrating experiential learning opportunities.
- Updated Library Management System.
- Content-specific digital tools and resources to support core and elective classes.

Pleasant Grove Middle School

Goal 1. PGMS will provide a well rounded educational program that will ensure high levels of learning for all students.

- Objective 1.** RLA will increase the students who score Meets on STAAR by 6% across the campus for all students for an overall Meets of 80% by May 2025.
- Objective 2.** The percentage of students reading on grade level or above will increase from 45% to 70% during the 2024-2025 calendar year.
- Objective 3.** Math will increase the students who score Meets on STAAR by 7% across the campus for all students for an overall Meets of 60% by May 2025.
- Objective 4.** Science will increase the students who Meets on STAAR by 8% across the campus for all students for an overall Meets of 50% by May 2025.
- Objective 5.** Social Studies will increase the students who Meets on STAAR by 11% across the campus for all students for an overall Meets of 55% by May 2025.
- Objective 6.** Students will participate in coordinated health and physical fitness activities and assessments in order to achieve and maintain healthy levels of wellness, with passing rate of at least 90% on the State approved assessment instrument.
- Objective 7.** Monitor and ensure 98% attendance rate for all students.
- Objective 8.** An innovative educational program will be provided that meets the unique and diverse needs of all middle school students.
- Objective 9.** PGMS will promote lifelong learning skills of students and staff.

Goal 2. PGMS will engage parents, community organizations, local businesses, civic organizations, and educational entities as educational stakeholders.

- Objective 1.** PGMS will involve community organizations in their educational plan.
- Objective 2.** PGMS will engage and develop strategies and communication, including interpreters, to increase parent and family engagement in their students' education.

Goal 3. PGMS will provide a safe, drug free and orderly environment.

- Objective 1.** Enforce procedures for a safe learning environment.
- Objective 2.** Implement the school emergency plan through uniform procedures and practices to ensure the safety, security and health of the students, faculty and staff.

Pleasant Grove Middle School

Goal 1. PGMS will provide a well rounded educational program that will ensure high levels of learning for all students.

Objective 1. RLA will increase the students who score Meets on STAAR by 6% across the campus for all students for an overall Meets of 80% by May 2025.

Activity/Strategy	Person(s) Responsible	Timeline	Resources	Evaluation
1. A comprehensive needs assessment will be conducted by the Campus Site-Based Committee to identify educational, needs, and summaries in student achievement, school culture and climate, staff quality and recruitment, curriculum, instruction and assessment, family and community involvement, school context and organization, and technology. (Target Group: All) (Strategic Priorities: 1,2,3)	Principal	November, May	(L)Local Funds	
2. To increase the amount and quality of learning time supplemental classes will be provided during the school day along with pull-out programs with interventionists to better address and meet the needs of those at risk of not meeting the challenging State Academic standards. (Target Group: H,AA,ECD,ESL,Migrant,EB,SPED,AtRisk,Dys, 6th,7th ,8th) (Strategic Priorities: 2)	Principal	August	(L)Local Funds, (S)State Compensatory	08/24/24 - Completed
3. To provide opportunities for all children to meet the challenging State academic standards, data-driven instruction will be utilized in the classroom. The disaggregated data, from Aware reports, will form instruction and help monitor student achievement levels. (Target Group: All,6th,7th ,8th) (Strategic Priorities: 2)	Campus Learning Coordinator, Principal, Professional Learning Communities	Quarterly	(L)Local Funds	08/24/24 - On Track
4. Specific, targeted instruction in reading language arts for all general education students and special education students will be implemented as part of the Response to Intervention (RTI) program. Students will be claimed during the CLAIM period designated four days a week in the schedule. This time will be used to target specific skills students are struggling with. (Target Group: SPED,6th,7th ,8th) (Strategic Priorities: 2)	Assistant Principal(s), Campus Learning Coordinator, Principal	Quarterly	(F)IDEA-B Special Education, (L)Local Funds, (S)State Compensatory	08/24/24 - On Track

Pleasant Grove Middle School

Goal 1. PGMS will provide a well rounded educational program that will ensure high levels of learning for all students.

Objective 1. RLA will increase the students who score Meets on STAAR by 6% across the campus for all students for an overall Meets of 80% by May 2025.

Activity/Strategy	Person(s) Responsible	Timeline	Resources	Evaluation
5. All Mainstreamed Special Education students will be supported by the General Education Teachers, Special Education Teachers and Special Education Paraprofessionals who will assist in core academic classrooms. Resources will include using federal, state, and local services. Special Education teachers will coordinate and integrate instruction with the general education reading and math teachers to provide aligned instruction with reading, math and all other teachers. (Target Group: SPED,6th,7th ,8th) (Strategic Priorities: 2)	Director of Special Education, Principal, Special Ed Teachers	August	(F)IDEA-B Special Education, (L)Local Funds	08/24/24 - Completed
6. All teachers will engage in the continuous improvement process and systemically monitor the student groups to ensure students meet their targets in the Closing the Gap domain. (Target Group: 6th,7th ,8th) (Strategic Priorities: 2)	Campus Learning Coordinator, Principal	Quartely	(L)Local Funds	08/24/24 - On Track
7. Administrators and teachers will meet every three weeks to evaluate student progress, discuss student needs, determine an appropriate academic assessment schedule, and collaborate in regards to instructional strategies to identify, and properly serve students through special programs. (Target Group: All,6th,7th ,8th)	Assistant Principal(s), Campus Learning Coordinator, Principal	Quarterly	(L)Local Funds	08/24/24 - On Track
8. Students with defined special needs or requests will have access to computer-aided online instruction. (Target Group: SPED,6th,7th ,8th)	Diagnostician, Principal, Special Ed Teachers	August	(F)IDEA-B Special Education, (L)Local Funds	08/24/24 - Significant Progress
9. The campus will strengthen the core academic program, by aligning curriculum used in all core subjects with resources from TEKS RS, Region 8 ESC, to provide an enriched and accelerated curriculum. (Target Group: 6th,7th	Campus Learning Coordinator, Principal	August	(L)Local Funds, (L)TEKS RS, (O)ESC 8	08/24/24 - Completed

Pleasant Grove Middle School

Goal 1. PGMS will provide a well rounded educational program that will ensure high levels of learning for all students.

Objective 1. RLA will increase the students who score Meets on STAAR by 6% across the campus for all students for an overall Meets of 80% by May 2025.

Activity/Strategy	Person(s) Responsible	Timeline	Resources	Evaluation
,8th) (Strategic Priorities: 2)				
10. All teachers will participate in professional development to learn about state accountability measures to ensure all student groups perform at high levels and show growth on the STAAR test. (Target Group: All) (Strategic Priorities: 2)	Assistant Principal(s), Principal	Each semester	(F)Title II, Part A, (L)Local Funds	
11. Grades 6-8 reading language arts teachers will be provided literacy training, coaching, and support through the district literacy initiative. (Target Group: All) (Strategic Priorities: 2)	Assistant Principal(s), Assistant Superintendent of Learning Services, District Literacy Coordinator, Principal	Quarterly	(L)Regular Ed Program(L)	08/24/24 - On Track
12. Targeted Tier 3 instruction will be provided to students who failed the STAAR test in reading the previous year. (Target Group: All) (Strategic Priorities: 2)	Assistant Principal(s)	Quarterly	(L)Local Funds, (S)State Compensatory FTEs	08/24/24 - On Track

Pleasant Grove Middle School

Goal 1. PGMS will provide a well rounded educational program that will ensure high levels of learning for all students.

Objective 2. The percentage of students reading on grade level or above will increase from 45% to 70% during the 2024-2025 calendar year.

Activity/Strategy	Person(s) Responsible	Timeline	Resources	Evaluation
1. Students will be tested three times a year to be evaluated three times a year (Beginning, Middle and End) on Star Renaissance to assess the students reading levels. (Target Group: All) (Strategic Priorities: 2)	Intervention Specialists, Principal, Teacher(s)	September, January, May	(L)Regular Ed Program(L), (S)Regular Ed Program	
2. Teachers will use Lexia to provide individualized instruction for each student. (Target Group: All) (Strategic Priorities: 2)	Intervention Specialists, Principal, Special Ed Teachers, Teacher(s)	August	(L)Regular Ed Program(L), (S)Regular Ed Program	
3. Reading instruction will be based on the literacy initiative framework for reading and writing. (Target Group: All) (Strategic Priorities: 2)	District Literacy Coordinator, Principal, Teacher(s)	Quarterly	(L)Regular Ed Program(L), (S)Regular Ed Program	08/24/24 - On Track
4. Tier 2 instruction will be provided through a daily RTI period called Claim. (Target Group: All) (Strategic Priorities: 2)	Assistant Principal(s), Campus Learning Coordinator, Teacher(s)	Quarterly	(L)Regular Ed Program(L), (S)Regular Ed Program	08/24/24 - On Track
5. The campus will strengthen the core academic program, by aligning curriculum used in all core subjects with resources from TEKS RS to provide an enriched, equitable, and accelerated curriculum. (Target Group: All)	Principal	Quarterly	(L)Regular Ed Program(L), (S)Regular Ed Program	08/24/24 - On Track

Pleasant Grove Middle School

Goal 1. PGMS will provide a well rounded educational program that will ensure high levels of learning for all students.

Objective 3. Math will increase the students who score Meets on STAAR by 7% across the campus for all students for an overall Meets of 60% by May 2025.

Activity/Strategy	Person(s) Responsible	Timeline	Resources	Evaluation
1. Specific, targeted instruction in math for all general education students and special education students will be implemented as part of the Response to Intervention (RTI) program. Students will be claimed during the CLAIM period designated four days a week in the schedule. This time will be used to target specific skills students are struggling with. (Target Group: All) (Strategic Priorities: 2)	Campus Learning Coordinator, Principal, Teacher(s)	Quarterly	(L)Regular Ed Program(L), (S)Regular Ed Program	Criteria: Improved learning in math 08/24/24 - On Track
2. Teachers will plan collaboratively in Collaborative Team Meetings. Teachers will engage in the PLC process to identify priority standards, provide a guaranteed and viable curriculum administer common assessments, and provide supplemental support as needed for all students. (Target Group: All) (Strategic Priorities: 2)	Assistant Superintendent of Learning Services, Campus Learning Coordinator, Principal	9 weeks	(L)Regular Ed Program(L), (S)Regular Ed Program	08/24/24 - On Track
3. A team from PGMS will be working with other campuses on the Math Task Force to explore and identify Math resource needs, training needs, and make an aligned plan to increase math performance across the district. (Target Group: All) (Strategic Priorities: 2)	Assistant Superintendent of Learning Services, Principal, Teacher(s)	Quarterly	(L)Regular Ed Program(L), (S)Regular Ed Program	08/24/24 - On Track
4. The campus learning coordinator will provide job-embedded, ongoing support through the PLC process. Teachers will be supported with identifying priority standards, planning engaging lessons, creating assessments, and provide timely intervention as needed. (Target Group: All) (Strategic Priorities: 2)	Assistant Superintendent of Learning Services, Principal	Quarterly	(S)State Compensatory, (S)State Compensatory FTEs	08/24/24 - On Track
5. Targeted Tier 3 instruction will be provided to students who failed the STAAR test in math the previous year. (Target Group: All) (Strategic Priorities: 2)	Assistant Principal(s), Principal	semester	(L)Regular Ed Program(L), (S)Regular Ed Program	
6. The campus will strengthen the core	Principal	Quarterly	(L)Regular Ed Program(L),	08/24/24 - On Track

Pleasant Grove Middle School

Goal 1. PGMS will provide a well rounded educational program that will ensure high levels of learning for all students.

Objective 3. Math will increase the students who score Meets on STAAR by 7% across the campus for all students for an overall Meets of 60% by May 2025.

Activity/Strategy	Person(s) Responsible	Timeline	Resources	Evaluation
academic program, by aligning curriculum used in all core subjects with resources from TEKS RS to provide an enriched, equitable, and accelerated curriculum. (Target Group: All)			(S)Regular Ed Program	
7. Math, Science. and Social Studies will utilize Progress Learning to identify students' current instructional level and engage students with customized lessons and practice. (Target Group: All) (Strategic Priorities: 2)	Principal	Semester	(L)Regular Ed Program(L), (S)Regular Ed Program	

Pleasant Grove Middle School

Goal 1. PGMS will provide a well rounded educational program that will ensure high levels of learning for all students.

Objective 4. Science will increase the students who Meets on STAAR by 8% across the campus for all students for an overall Meets of 50% by May 2025

Activity/Strategy	Person(s) Responsible	Timeline	Resources	Evaluation
1. Specific, targeted instruction in science for all general education students and special education students will be implemented as part of the Response to Intervention (RTI) program. Students will be claimed during the CLAIM period designated four days a week in the schedule. This time will be used to target specific skills students are struggling with. (Target Group: All)	Principal	Quarterly	(L)Regular Ed Program(L), (S)Regular Ed Program	Criteria: Increase student success in science 08/24/24 - On Track
2. Teachers will plan collaboratively in Collaborative Team Meetings. Teachers will engage in the PLC process to identify priority standards, provide a guaranteed and viable curriculum administer common assessments, and provide supplemental support as needed for all students. (Target Group: All)	Principal	9 weeks	(L)Regular Ed Program(L), (S)Regular Ed Program	08/24/24 - On Track
3. Science teachers across the district are actively involved in vertical articulation to ensure priority standards are aligned and targeted in grades K-12. (Target Group: All)	Assistant Superintendent of Learning Services, Principal	1 semester	(L)Regular Ed Program(L), (S)Regular Ed Program	Criteria: Improved science STAAR scores 08/24/24 - Significant Progress
4. The campus learning coordinator will provide job-embedded, ongoing support through the PLC process. Teachers will be supported with identifying priority standards, planning engaging lessons create assessments, and provide timely intervention as needed. (Target Group: All)	Assistant Superintendent of Learning Services, Principal	Quarterly	(L)Regular Ed Program(L), (S)Regular Ed Program	Criteria: Improved staar scores 08/24/24 - On Track
5. Targeted Tier 3 instruction will be provided to students who failed the STAAR test in science the previous year. (Target Group: All)	Principal	annually	(L)Regular Ed Program(L), (S)Regular Ed Program	
6. The campus will strengthen the core academic program, by aligning curriculum used in all core subjects with resources from TEKS RS to provide an enriched, equitable, and accelerated curriculum. (Target Group: All)	Principal	Quarterly	(L)Regular Ed Program(L), (S)Regular Ed Program	08/24/24 - On Track

Pleasant Grove Middle School

Goal 1. PGMS will provide a well rounded educational program that will ensure high levels of learning for all students.

Objective 4. Science will increase the students who Meets on STAAR by 8% across the campus for all students for an overall Meets of 50% by May 2025

Activity/Strategy	Person(s) Responsible	Timeline	Resources	Evaluation
7. Math, Science. and Social Studies will utilize Progress Learning to identify students' current instructional level and engage students with customized lessons and practice. (Target Group: All)	Principal	semester	(L)Regular Ed Program(L), (S)Regular Ed Program	

Pleasant Grove Middle School

Goal 1. PGMS will provide a well rounded educational program that will ensure high levels of learning for all students.

Objective 5. Social Studies will increase the students who Meets on STAAR by 11% across the campus for all students for an overall Meets of 55% by May 2025.

Activity/Strategy	Person(s) Responsible	Timeline	Resources	Evaluation
1. Specific, targeted instruction in social studies for all general education students and special education students will be implemented as part of the Response to Intervention (RTI) program. Students will be claimed during the CLAIM period designated four days a week in the schedule. This time will be used to target specific skills students are struggling with. (Target Group: All)	Principal	Quarterly	(L)Regular Ed Program(L), (S)Regular Ed Program	08/24/24 - On Track
2. The campus learning coordinator will provide job-embedded, ongoing support through the PLC process. Teachers will be supported with identifying priority standards, planning engaging lessons, creating assessments, and provide timely intervention as needed. (Target Group: All)	Assistant Superintendent of Learning Services, Principal	Quarterly	(L)Regular Ed Program(L), (S)Regular Ed Program	08/24/24 - On Track
3. Teachers will plan collaboratively in Collaborative Team Meetings. Teachers will engage in the PLC process to identify priority standards, provide a guaranteed and viable curriculum administer common assessments, and provide supplemental support as needed for all students. (Target Group: All)	Principal	Quarterly	(L)Regular Ed Program(L), (S)Regular Ed Program	08/24/24 - On Track
4. The social studies collaborative team will implement supplemental social studies resources that support priority standards, vocabulary development, and provides explicit, targeted social studies instructional strategies. (Target Group: All)	Principal	9 weeks	(L)Regular Ed Program(L), (S)Regular Ed Program	08/24/24 - On Track
5. Math, Science. and Social Studies will utilize Progress Learningto identify students' current instructional level and engage students with customized lessons and practice. (Target Group: All)	Principal	semester	(L)Regular Ed Program(L), (S)Regular Ed Program	08/24/24 - Some Progress

Pleasant Grove Middle School

Goal 1. PGMS will provide a well rounded educational program that will ensure high levels of learning for all students.

Objective 6. Students will participate in coordinated health and physical fitness activities and assessments in order to achieve and maintain healthy levels of wellness, with passing rate of at least 90% on the State approved assessment instrument.

Activity/Strategy	Person(s) Responsible	Timeline	Resources	Evaluation
1. The campus will utilize the TEKS as the basis for all Physical Education classes, with students receiving at least the minimum requirements for Physical Education per week. Health instruction will be provided in the science classrooms. (Target Group: All,6th,7th ,8th)	Principal	Each 9 Weeks	(L)Local Funds	Summative - Fitness Gram Reports Formative - Student 6-Weeks Grades
2. The campus will monitor student health conditions through health screenings for vision, hearing, scoliosis and immunization records. (Target Group: All,6th,7th ,8th)	School Nurse	Quarterly	(L)Local Funds	
3. A member of the campus staff will serve on the district School Health Advisory Council to assist in communicating information regarding health issues. (Target Group: All,6th,7th ,8th)	Principal, School Nurse	Aug. Dec. March May	(L)Local Funds	Summative - SHAC Membership and Recommendations

Pleasant Grove Middle School

Goal 1. PGMS will provide a well rounded educational program that will ensure high levels of learning for all students.

Objective 7. Monitor and ensure 98% attendance rate for all students.

Activity/Strategy	Person(s) Responsible	Timeline	Resources	Evaluation
1. Parents will be notified regarding their child's attendance when absences are excessive. (Target Group: All,6th,7th ,8th) (CSFs: 1,5)	Principal	9 weeks	(L)Local Funds	Formative - Student Report Cards and Attendance Letters Summative - Attendance Rate
2. The campus will continue to enforce Campus/District policy and procedures to maintain rate. (Target Group: All) (CSFs: 1)	Principal	August	(L)Local Funds	08/24/24 - On Track
3. UIL sponsors/coaches will monitor daily attendance for students participating in their programs. (Target Group: All) (CSFs: 1)	Assistant Principal(s), Principal	9 Weeks	(L)Local Funds	Summative - Student Attendance Spreadsheet

Pleasant Grove Middle School

Goal 1. PGMS will provide a well rounded educational program that will ensure high levels of learning for all students.

Objective 8. An innovative educational program will be provided that meets the unique and diverse needs of all middle school students.

Activity/Strategy	Person(s) Responsible	Timeline	Resources	Evaluation
1. All students will have an opportunity to participate in UIL with practice materials and practice time. (Target Group: 504,6th,7th ,8th) (Strategic Priorities: 3) (CSFs: 6)	Principal	Monthly through December	(L)Local Funds	
2. The campus will monitor and implement targeted, individualized instruction for students who are identified with Student Service plans including Dyslexia, Section 504, Special Education and ESL students. (Target Group: ESL,SPED,6th,7th ,8th)	Director of Special Programs, Principal	Each 9 Weeks	(F)IDEA-B Special Education, (L)Special Education(L), (O)Local Districts	Summative - Student Service Plans
3. Extracurricular activities will be provided: Athletics, Band, Cheerleading, Drill Line (Star Steppers), Academic UIL, Theatre, Dance, Art Clubs, Book Clubs, Student Council, and National Junior Honor Society. (Target Group: All,GT,6th,7th ,8th)	Assistant Principal(s), Principal	August and January	(L)Local Funds	Summative - Meet Results 08/24/24 - On Track
4. To provide daily support for students, planners will be utilized and parents will be contacted (using the Remind texting program) of assignments and activities. (Title I TA: 1) (Target Group: All,6th,7th ,8th) (CSFs: 5)	Principal	August	(L)Local Funds	Summative - Use of Student Planners 08/24/24 - On Track
5. Library staff will encourage reluctant readers and promote reading opportunities along with managing library resources. (Title I TA: 4) (Target Group: All)	Principal	August	(L)Local Funds	Summative - Reading State Assessment Results 08/24/24 - Completed
6. Technology integration will be utilized to strengthen and support learning in core subjects, with special emphasis on STAAR assessment areas. (Title I TA: 1) (Target Group: All,6th,7th ,8th) (Strategic Priorities: 2) (CSFs: 1)	Principal	Quarterly	(L)Local Funds, (O)Instructional Resources	
7. Encourage student attendance for After School Academic Assistance. (Title I TA: 4) (Target Group: 6th,7th ,8th)	Principal	September	(L)Local Funds	
8. To provide extended learning time with an	Principal	August	(L)Local Funds	08/24/24 - On Track

Pleasant Grove Middle School

Goal 1. PGMS will provide a well rounded educational program that will ensure high levels of learning for all students.

Objective 8. An innovative educational program will be provided that meets the unique and diverse needs of all middle school students.

Activity/Strategy	Person(s) Responsible	Timeline	Resources	Evaluation
enriched and accelerated curriculum, students will be encouraged to attend "Before and After School Academic Assistance." (Title I TA: 2) (Target Group: 6th,7th ,8th)				
9. To incorporate career learning opportunities, the campus will promote skills attainment through CTE offerings. (Target Group: CTE,6th,7th ,8th) (Strategic Priorities: 3)	Coordinator of CTE, Principal		(S)Career and Tech	
10. All students will be assessed three time per year using a standard math assessment, Map Growth. Results will be used to offer students enriched and / or advanced math classes and math extension during CLAIM period. (Target Group: All,GT,6th,7th ,8th)	Principal	BOY, MOY, EOY	(F)Title IV	Criteria: Assessment results, Class Rosters

Pleasant Grove Middle School

Goal 1. PGMS will provide a well rounded educational program that will ensure high levels of learning for all students.

Objective 9. PGMS will promote lifelong learning skills of students and staff.

Activity/Strategy	Person(s) Responsible	Timeline	Resources	Evaluation
1. Technology training will be available for staff members and students. Google Suite, Eduphoria (Target Group: 6th,7th ,8th)	Principal	July Aug	(L)Local Funds	08/24/24 - Completed
2. Teachers will increase usage of student email, network service accounts, Google Classrooms, and Electronic Portfolios. (Grade 6 will not be included in email). (Target Group: All,7th ,8th)	Principal	Each Semester	(L)Local Funds	
3. Teachers will use online resources for classroom management including continuous monitoring of students' academic progress, creation of lesson plans, and reports for students and parents. (Target Group: All,6th,7th ,8th)	Principal	Each Semester	(L)Local Funds	
4. Technology integration including technology application TEKS, will be utilized to strengthen and support learning in core subjects, with special emphasis on STAAR assessment areas. (Target Group: 6th,7th ,8th)	Principal	Each Semester	(L)Local Funds	

Pleasant Grove Middle School

Goal 2. PGMS will engage parents, community organizations, local businesses, civic organizations, and educational entities as educational stakeholders.

Objective 1. PGMS will involve community organizations in their educational plan.

Activity/Strategy	Person(s) Responsible	Timeline	Resources	Evaluation
1. Community members will be invited to serve on the District Improvement Committee, the Campus Improvement Committee, the School Health Advisory Council, and other applicable committees. (Target Group: All,6th,7th ,8th)	Principal	August	(L)Local Funds	
2. The campus will partner with PGISD Foundation, PG Connection, Texas A&M-Texarkana, Arts Integration Institute in Partnership with The Kennedy Center, TRAHC, ArtSmart, Texarkana Museum System, Junior Achievement, The Learning for Life Curriculum, Region 8 Education Service Center (ESC), to incorporate hands-on learning through off-campus trips coordinated and integrated with these federal, state, and local services, resources, and programs. (Target Group: All,6th,8th)	Principal	August	(L)Local Funds	08/24/24 - Completed
3. PGMS will provide effective transitions for students from middle school grades to high school to help students realize their personal and educational potential. Career fairs, Hawk Fest, College Day, guest speakers, etc. will be part of this transition process. (Target Group: 6th,8th)	Principal	April, May	(L)Local Funds	
4. Establish systematic communication measures to community, parents, and staff regarding the recommendations of the campus site-based committee. (Target Group: All,6th,7th ,8th)	Principal	August	(L)Local Funds	08/24/24 - Completed

Pleasant Grove Middle School

Goal 2. PGMS will engage parents, community organizations, local businesses, civic organizations, and educational entities as educational stakeholders.

Objective 2. PGMS will engage and develop strategies and communication, including interpreters, to increase parent and family engagement in their students' education.

Activity/Strategy	Person(s) Responsible	Timeline	Resources	Evaluation
1. Teacher/Parent conferences will determine what the school and parents will do to assist students to meet the state standards, and what will support and improve student performance. (Target Group: All,6th,7th ,8th)	Principal	September	(L)Local Funds	
2. Meet the Teacher Night will be hosted for all students and their parents. An orientation will be provided for incoming 6th graders and new students to the campus. (Target Group: All,6th,7th ,8th)	Principal	August	(L)Local Funds	08/24/24 - Completed
3. Parents will have online access to their child's grades and attendance and the Parent Portal to Family Access will be promoted. (Target Group: All,6th,7th ,8th)	Principal	August	(O)Skyward	08/24/24 - Completed
4. Parents and community members will receive information through email, phone notification system, Remind, district and campus websites, social media Facebook postings, monthly activity calendars, newspaper reports, mail outs, marquee, schedule pick up, Hawk Fest, grade level parent meetings, pep rallies, grade report distributions, and teacher web pages. Interpreters will be provided as needed. (Target Group: 6th,7th ,8th)	Principal	Quarterly	(L)Local Funds, (O)Remind 101, (S)Bilingual/ESL	
5. Parents will be invited to attend assemblies, Academic Awards, Citizen of the Month, Honor Recognition, Rotarian Luncheons, and other campus events. (Target Group: All,6th,7th ,8th)	Principal	Each 9 weeks	(L)Local Funds	

Pleasant Grove Middle School

Goal 3. PGMS will provide a safe, drug free and orderly environment.

Objective 1. Enforce procedures for a safe learning environment.

Activity/Strategy	Person(s) Responsible	Timeline	Resources	Evaluation
1. Guidance programs will address safety, substance abuse, digital citizenship, internet safety, technology devices, bullying, child abuse, sexual harassment, conflict resolution, and violence. (Target Group: All,6th,7th ,8th)	Principal	August	(L)Local Funds, (O)PEIMS	08/24/24 - On Track
2. Utilization of surveillance cameras to monitor activities of students, staff, and visitors will be maintained. (Target Group: All,6th,7th ,8th)	Director of Operations	August	(L)Local Funds, (O)PEIMS	08/24/24 - On Track
3. Teacher training procedures for first aid, CPR and other basic safety needs will be scheduled. (Target Group: All,6th,7th ,8th)	Director of Operations, Personnel Director	August	(L)Local Funds	08/24/24 - Completed
4. When necessary, students with discipline infractions will be assigned to lunch detention, after school detention, ISS, OSS, and/or DAEP. (Target Group: All,6th,7th ,8th)	Assistant Principal(s)	Daily	(L)Local Funds	
5. The Campus will continue positive student services including phone calls, conferences, counseling, and homebound services. (Target Group: All,6th,7th ,8th)	Principal	Quarterly	(F)IDEA-B Special Education, (L)Local Funds	
6. The campus will host Red Ribbon Week to heighten awareness of drug abuse prevention methods. (Target Group: All,6th,7th ,8th)	Principal	October	(L)Local Funds	
7. The campus will utilize the services of Interquest Detection Services to provide random mandatory drug testing for selected extracurricular activities. (Target Group: All,6th,7th ,8th)	Principal	Quartly	(L)Local Funds	
8. Visitors driver's license will be scanned to receive a pass to gain access through the security doors. (Target Group: All,6th,7th ,8th)	Principal	August	(L)Local Funds	08/24/24 - On Track
9. The campus will utilize eHall Pass to ensure student safety during transitions. (Target Group: All)	Principal	Quarterly		08/24/24 - On Track

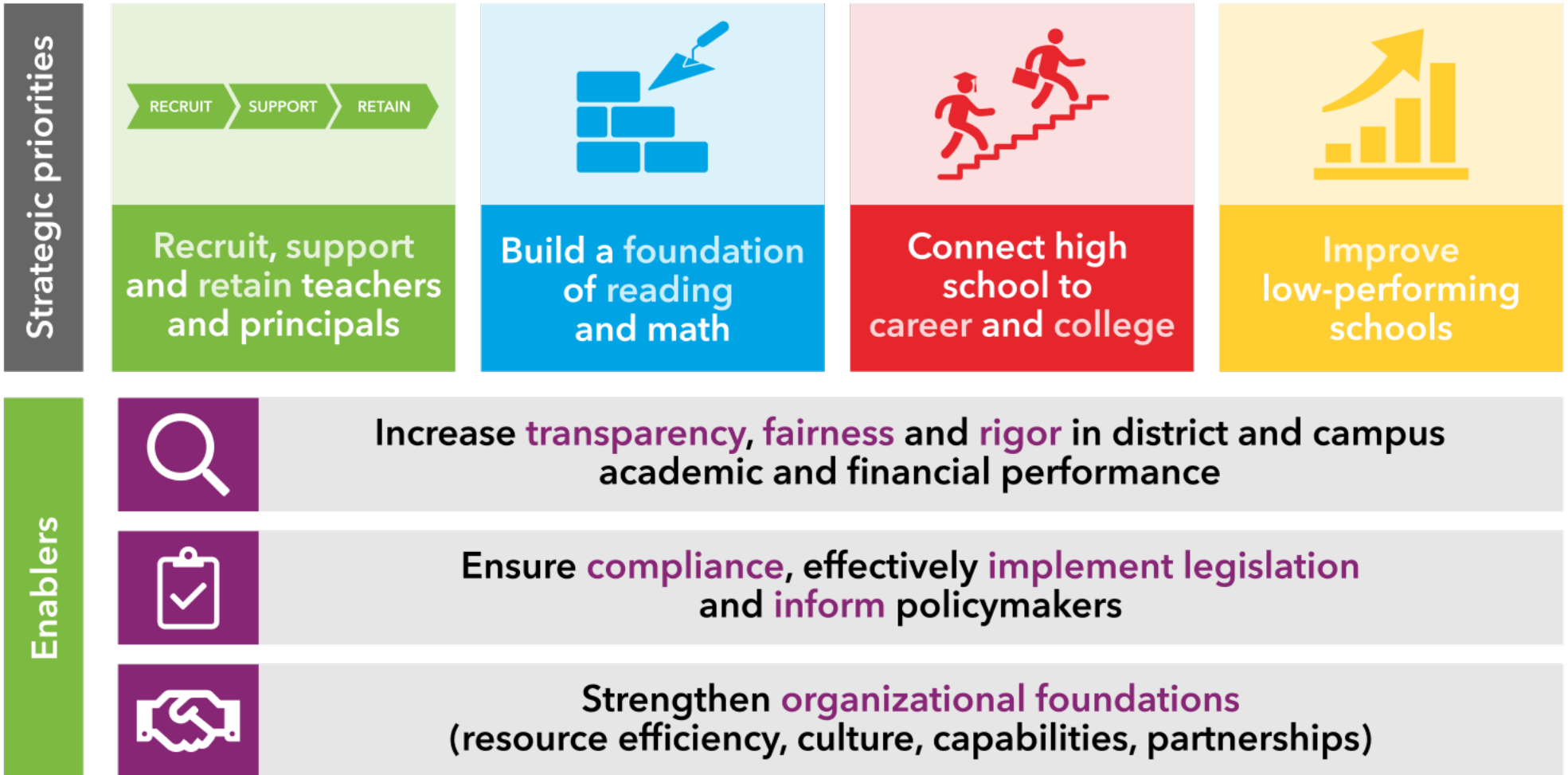
Pleasant Grove Middle School

Goal 3. PGMS will provide a safe, drug free and orderly environment.

Objective 2. Implement the school emergency plan through uniform procedures and practices to ensure the safety, security and health of the students, faculty and staff.

Activity/Strategy	Person(s) Responsible	Timeline	Resources	Evaluation
1. The campus will post an emergency response plan in all classrooms, and rehearse the Crisis Management Plan, including fire, bad weather and intruder drills, and Crisis Intervention Team procedures according to the plan. (Target Group: 6th,7th ,8th)	Assistant Principal(s)	August	(L)Local Funds	Summative - Emergency Response Plan 08/24/24 - Completed
2. The campus will provide training for the Campus Response Team. (Target Group: 6th,7th ,8th)	Director of Special Programs	August	(L)Local Funds	Summative - Professional Development Certificaes
3. The campus will maintain a positive relationship with local emergency response teams and authorities. (Target Group: 6th,7th ,8th) (CSFs: 5)	Principal	August	(L)Local Funds	Summative - Safety Drill Reports 08/24/24 - On Track

Every child, prepared for success in college, a career or the military.



**adapted from TEA Strategic Plan - <https://tea.texas.gov>*