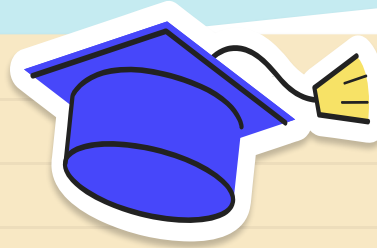
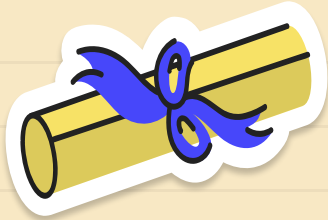


The background of the slide features a large, light green, irregularly shaped logo. Inside this logo, the letters 'M' and 'B' are written in a large, yellow, serif font. Below the letters is a stylized, grey-toned illustration of a pirate's face. The pirate has a thick mustache, a goatee, and is wearing a black eye patch over his right eye. He is also wearing two yellow, curved earrings. The entire logo is centered on the slide.

MB

Student Evaluation & GPA

2024-2025



MBMS Title I Parenting Series

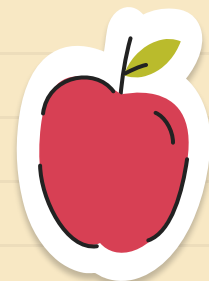
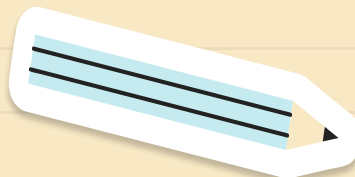
The MBMS Guidance Team will be hosting the Title I Parenting Series January 2025. Parent presentations will take place at **8:30am** and **5:00pm** in the MBMS Media Center. We invite all parents and guardians to attend our informational parent meetings about the middle school years.

January 9th - Internet & Community Safety

January 16th - Student Evaluation & GPA

January 23rd - Middle School Traits & Rising 6th Grade Orientation

January 30th - Mental Health of Teens



Agenda

- Welcome
- iREADY
- SC Ready
- PSAT (8th grade only)
- GPA
- Benefits for Students
- IGP/Goal-Setting Conferences

Welcome!

Jessica Grimes - Family Facilitator & Title I Coordinator

Larry Obeda – 8th Grade Counselor

Hallie Caroway – 7th Grade Counselor

Gina Mahoney – 6th Grade Counselor

Catherine Curtiss – Lead Counselor

iREADY Assessment

Diagnostic

- Adaptive assessment administered 3 times per school year
- Helps teachers understand what students know and what they need to learn

Diagnostic Data

- Shows overall score
- Shows yearly typical and stretch growth goals
- Shows a students' strengths and areas of growth

Online Lessons

- Individualized for each student
- Match what students need to learn

Using iReady to Predict State Testing Scores

SC Ready Projections iReady Math	SC Ready Does not meet	SC Ready Approaches	SC Ready Meets	SC Ready Exceeds
Grade 6	1st - 24th % 100-471	25th - 53rd % 472-500	54th - 77th % 501-519	77th - 99th % 520-800
Grade 7	1st - 31st % 100-488	32nd - 66th % 489-518	67th - 81st % 519-535	82nd - 99th % 536-800
Grade 8	1st - 33rd % 100-495	34th - 61st % 496-523	62nd - 77th % 524-540	78th - 99th % 541-800

Spring State Testing Dates

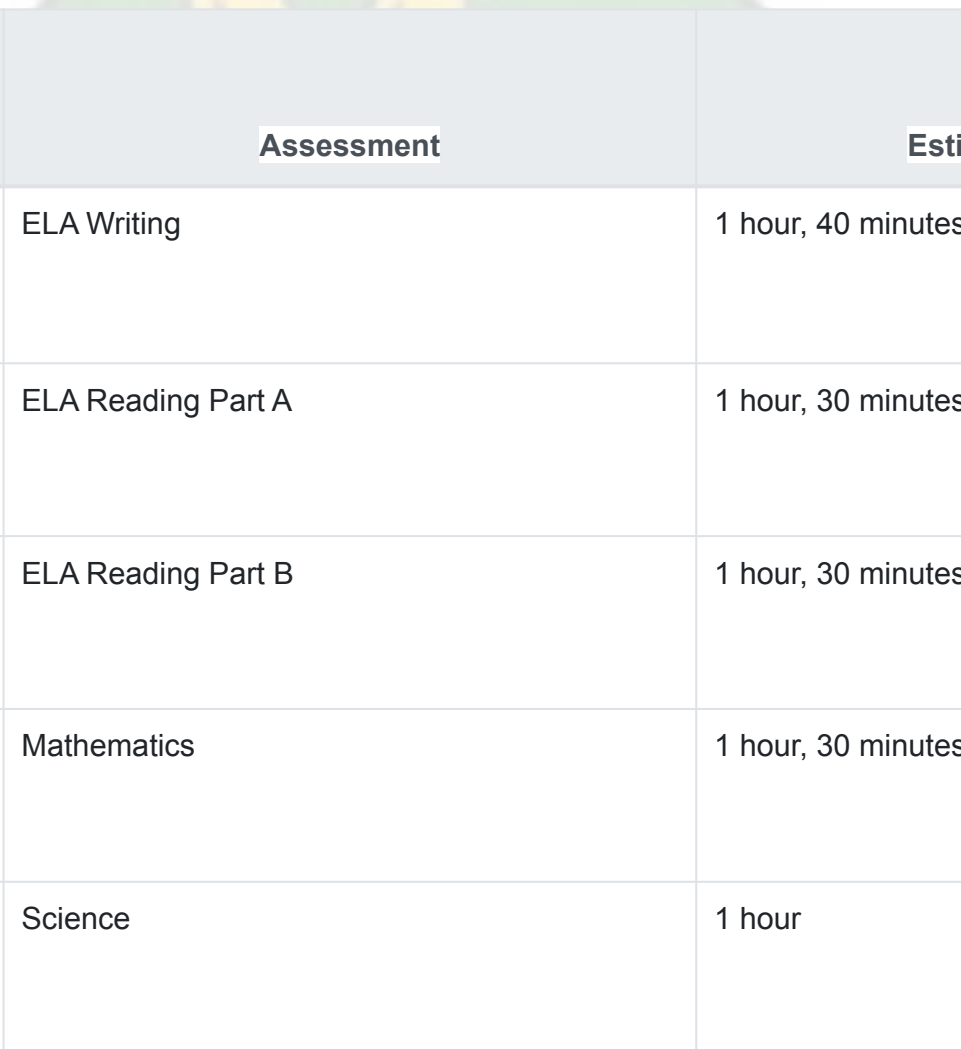
SC Ready– all grade levels

- Math - 5/13/25
- Science (6th grade only) - 5/15/25
- Writing - 5/19/25
- Reading Section A - 5/21/25
- Reading Section B - 5/22/25

ALGEBRA 1 H - 5/15/25 (7th & 8th grade Algebra I H)

SC Ready Facts

- All tests are administered online
- Assesses the South Carolina College and Career Readiness Standards in English/Language Arts and Math
- All students take each test
- Test are untimed but must be finished within the day



Grades	Assessment	Estimated Time
3-8	ELA Writing	1 hour, 40 minutes
3-8	ELA Reading Part A	1 hour, 30 minutes
3-8	ELA Reading Part B	1 hour, 30 minutes
3-8	Mathematics	1 hour, 30 minutes
4 and 6	Science	1 hour

Spring EOC

- High School Level Courses
 - Algebra 1 H
 - Geometry H (No EOC; Final Exam instead)
 - English 1 H (No EOC; Final Exam instead)
- Accounts for 20% of the final grade

PSAT

- Students take the PSAT/NMSQT (Preliminary SAT/National Merit Scholarship Qualifying Test) October of their 8th grade year and 10th grade year

College & Career Readiness



Youth
Apprenticeship

Career
Readiness
Assessment

ASVAB
31 or higher

CATE
Completer +
Certification

- Career Readiness Assessment
- CATE Completer + Certification
- ASVAB 31 or higher
- Youth Apprenticeship

College & Career Readiness



6 hrs. Dual
Credit C or
higher

ACT 20

IB
4 or higher

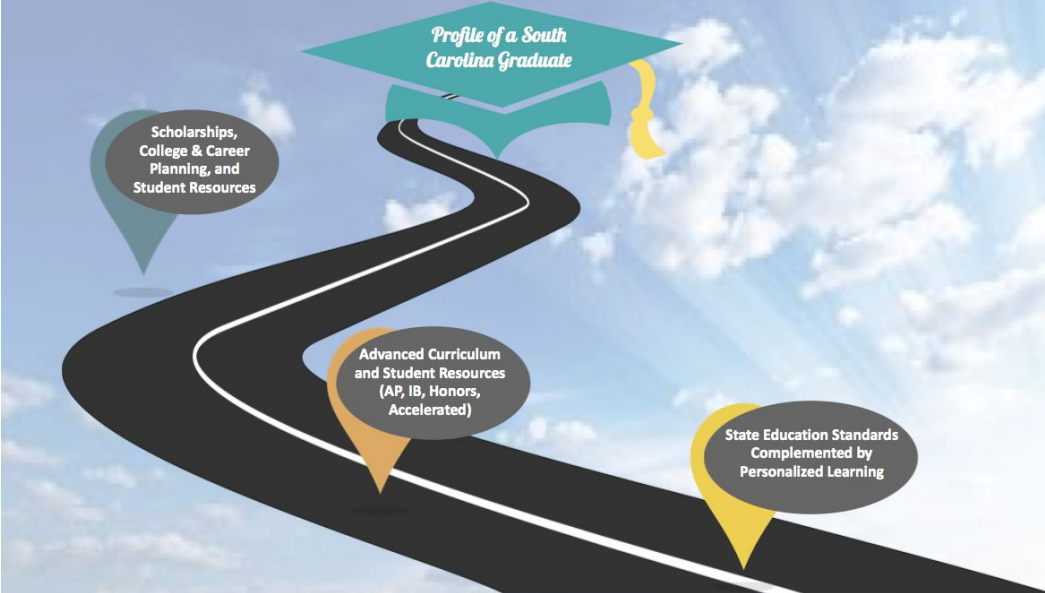
SAT 1020

AP
3 or
higher

- ACT 20
- SAT 1020
- AP 3 or higher
- IB 4 or higher
- 6 hrs. Dual Credit C or higher

Benefits of Taking the PSAT/NMSQT Middle School--Grade 8

- **Exposure** to College Entrance Tests.
- **Understand** resources for free, personalized Official SAT Practice on Khan Academy®
- **Exposure** to college with college and career planning tools
- **Understand** process for the National Merit® Scholarship Program (3rd year in high school; usually grade 11)
- **Understand** that preparing for College Entrance tests will lead to better performance on SAT, ACT, WorkKeys, and the ASVAB.
- **Understand** admission and financial aid information in regards to applying for colleges
- **Historically, students who take the PSAT/NMSQT score higher on the SAT, on average, than those who don't take the test**



Testing in the 8th, 9th and/or 10th grade provides early feedback while there's still time to track progress as students plan and prepare!

- HCS currently offers PSAT/NMSQT to all 8th and 10th grade students free of charge. Additional grade levels are able to sign up to test and may be able to test free of charge based on need (through CB fee waivers) or by meeting district criteria established for students in accelerated curriculum options.

Free SAT Practice on Khan Academy

- Students who sign up for Official SAT® Practice on Khan Academy® get a practice plan built just for them.
- Students who link their College Board and Khan Academy accounts, get a personalized study plan based on their results on tests like the PSAT/NMSQT or SAT so they can focus on the skills they need to work on most.
- Students also get access to:
 - Thousands of practice questions with instant feedback
 - Video lessons that explain problems step by step
 - 8 full-length practice tests
 - Studying and test-taking strategies

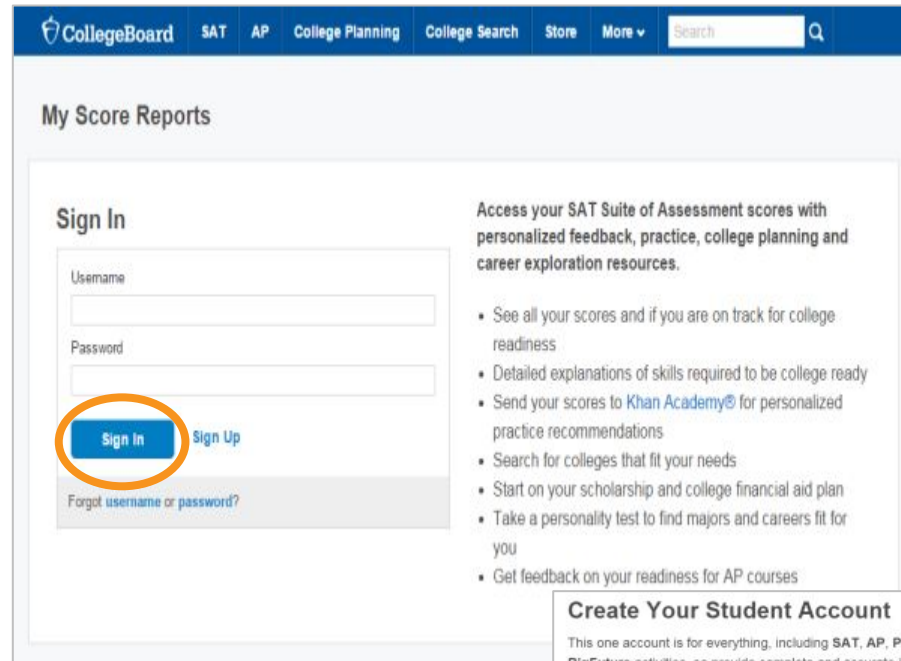
Get to Know the PSAT/NMSQT[®]



- The PSAT/NMSQT is highly relevant to your future success because it focuses on the skills and knowledge at the heart of your education. It measures:
 - What you learn in high school
 - What you need to succeed in college
- The PSAT/NMSQT measures reading, writing and language, and math skills developed over many years.
- The PSAT/NMSQT does not ask for facts from literature, history, or science, or for recall of math formulas, because it measures your reasoning and critical thinking skills.
- You don't have to discover secret tricks or cram the night before.
- There is no penalty for guessing.
- The test length is 2 hours, 15 minutes.

How Do I Access My Online PSAT/NMSQT ® Scores and Reports?

Log in to an existing College
Board account or create a new
one at
studentscores.collegeboard.org



The screenshot shows the 'My Score Reports' page on the CollegeBoard website. The navigation bar at the top includes links for CollegeBoard, SAT, AP, College Planning, College Search, Store, and More, along with a search bar. The main heading is 'My Score Reports'. Below this, there is a 'Sign In' section with input fields for 'Username' and 'Password'. The 'Sign In' button is highlighted with an orange circle. To the right of the login fields is a 'Sign Up' link. Below the login fields is a link for 'Forgot username or password?'. To the right of the login section, there is a list of benefits for accessing scores, including seeing all scores, getting personalized feedback, and searching for colleges.

CollegeBoard SAT AP College Planning College Search Store More Search

My Score Reports

Sign In

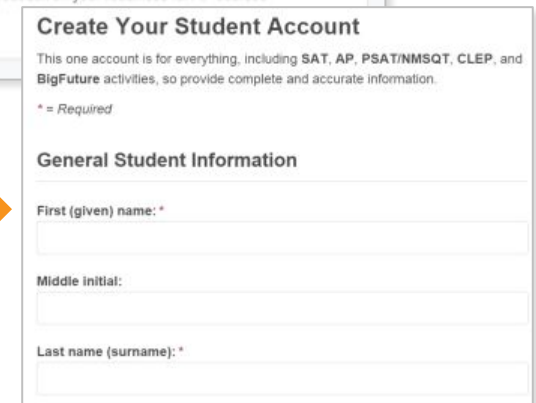
Username
Password

Sign In Sign Up

[Forgot username or password?](#)

Access your SAT Suite of Assessment scores with personalized feedback, practice, college planning and career exploration resources.

- See all your scores and if you are on track for college readiness
- Detailed explanations of skills required to be college ready
- Send your scores to [Khan Academy](#) for personalized practice recommendations
- Search for colleges that fit your needs
- Start on your scholarship and college financial aid plan
- Take a personality test to find majors and careers fit for you
- Get feedback on your readiness for AP courses



The screenshot shows the 'Create Your Student Account' form. It includes a heading, a description of the account, a list of required fields, and a section for 'General Student Information' with input fields for 'First (given) name', 'Middle initial', and 'Last name (surname)'.

Create Your Student Account

This one account is for everything, including SAT, AP, PSAT/NMSQT, CLEP, and BigFuture activities, so provide complete and accurate information.

* = Required

General Student Information

First (given) name: *

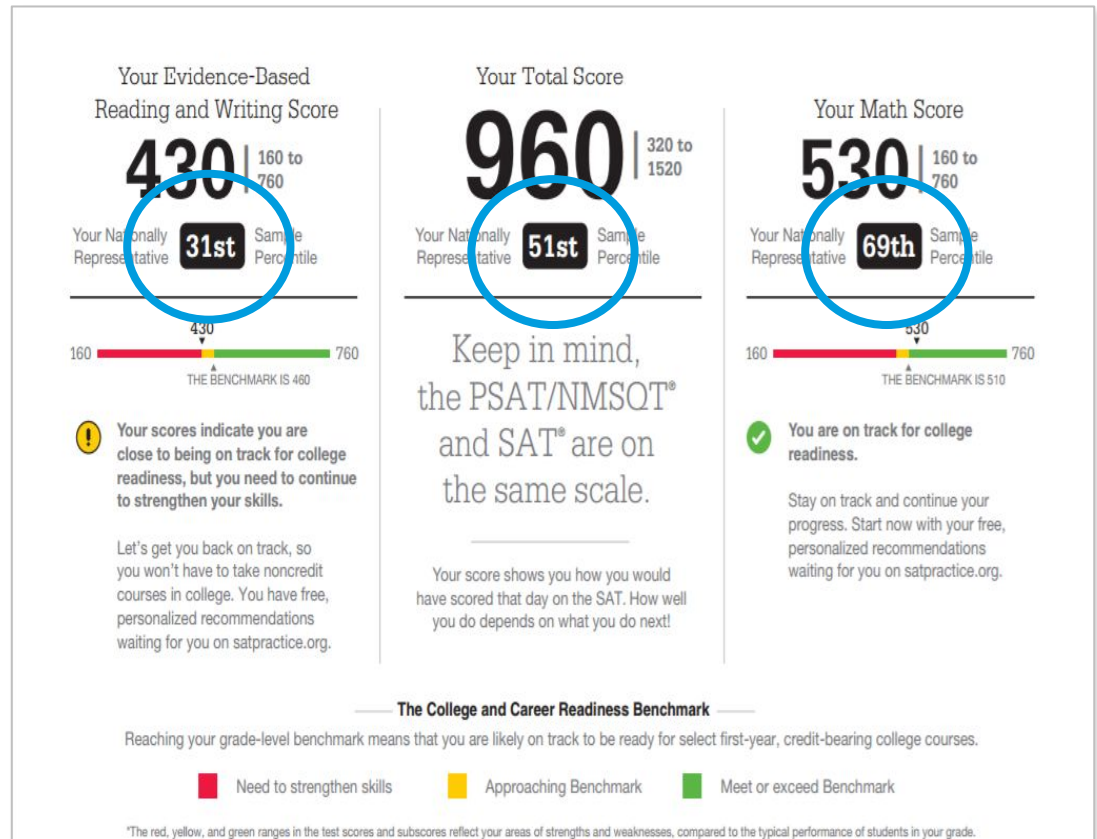
Middle initial:

Last name (surname): *

What Are My Score Percentiles?

Percentiles and benchmarks are provided for 10th and 11th grades on the PSAT/NMSQT®.

If students are younger or older, then he or she is compared to the nearest grade level. For example, a ninth grader taking the PSAT/NMSQT would be compared to 10th grade benchmarks.



What Is the National Merit® Scholarship Program?

Students who take the PSAT/NMSQT in **11th grade** may enter the National Merit® Scholarship Program, an academic competition for recognition and scholarships.

CollegeBoard

National Merit Scholarship Corporation

National Merit Scholarship Corporation (NMSC) conducts the National Merit® Scholarship Program, an academic competition for recognition and college scholarships. To designate students who qualify for recognition in its 2018 competition, NMSC will consider the 2016 PSAT/NMSQT® Selection Index scores of some 1.6 million test-takers (usually high school juniors) who meet program entry requirements. For more information, please visit: www.nationalmerit.org.

If any of your responses to NMSC's "Entry Requirements" questions (see right-hand column) are inaccurate or there has been a change in plans that may affect program entry, write immediately to:

National Merit Scholarship Corporation
Attn: Scholarship Administration
1560 Sherman Avenue, Suite 200
Evanston, IL 60201-4897

Include your name and home address along with your high school name, address, and six-digit code number.

Your NMSC Selection Index

139

NMSC uses a Selection Index based on PSAT/NMSQT scores as an initial screen of students who enter its scholarship programs. To calculate your Selection Index, double the sum of your Reading, Writing and Language, and Math Test scores.

Eligibility Information

If your Selection Index places you among the 50,000 high scorers who qualify for National Merit Scholarship Program recognition, you will be notified next September.

Entry Requirements
(Information you provided on your answer sheet)

High school student:
YES

Year to complete high school and enroll full-time in college:
2018

Years to be spent in grades 9-12:
4

U.S. Citizenship:
YES

Image B. Student 2018, Grade 11th Grade

10 Point Grading Scale - Calculating GPA

- HIGH SCHOOL CREDIT CLASSES ONLY
- Every 10 percentage points, your grade changes a letter grade
- Should not focus on the letter grade so much as the actual percentage
- The higher the GPA, the better when apply for college
- 2 ways to increase GPA:
 - Increase the %
 - Increase the difficulty of the class

South Carolina Uniform Grading Scale Conversions				
Numerical Average	Letter Grade	College Prep Weighting	Honors Weighting	AP/IB/Dual Credit Weighting
100	A	5.000	5.500	6.000
99	A	4.900	5.400	5.900
98	A	4.800	5.300	5.800
97	A	4.700	5.200	5.700
96	A	4.600	5.100	5.600
95	A	4.500	5.000	5.500
94	A	4.400	4.900	5.400
93	A	4.300	4.800	5.300
92	A	4.200	4.700	5.200
91	A	4.100	4.600	5.100
90	A	4.000	4.500	5.000
89	B	3.900	4.400	4.900
88	B	3.800	4.300	4.800
87	B	3.700	4.200	4.700
86	B	3.600	4.100	4.600
85	B	3.500	4.000	4.500
84	B	3.400	3.900	4.400
83	B	3.300	3.800	4.300
82	B	3.200	3.700	4.200
81	B	3.100	3.600	4.100
80	B	3.000	3.500	4.000
79	C	2.900	3.400	3.900
78	C	2.800	3.300	3.800
77	C	2.700	3.200	3.700
76	C	2.600	3.100	3.600
75	C	2.500	3.000	3.500
74	C	2.400	2.900	3.400
73	C	2.300	2.800	3.300
72	C	2.200	2.700	3.200
71	C	2.100	2.600	3.100
70	C	2.000	2.500	3.000
69	D	1.900	2.400	2.900
68	D	1.800	2.300	2.800
67	D	1.700	2.200	2.700
66	D	1.600	2.100	2.600
65	D	1.500	2.000	2.500
64	D	1.400	1.900	2.400
63	D	1.300	1.800	2.300
62	D	1.200	1.700	2.200
61	D	1.100	1.600	2.100
60	D	1.000	1.500	2.000
59	F	0.900	1.400	1.900
58	F	0.800	1.300	1.800
57	F	0.700	1.200	1.700
56	F	0.600	1.100	1.600
55	F	0.500	1.000	1.500
54	F	0.400	0.900	1.400
53	F	0.300	0.800	1.300
52	F	0.200	0.700	1.200
51	F	0.100	0.600	1.100



MB

Why is this important

Early College High School

- Must apply in 8th grade - applications open 1/22/25 and close 2/14/25
- ECHS students will have the opportunity to complete the requirements for a SC High School Diploma and the opportunity to complete up to the required credits needed to earn an Associate's Degree
- Since ECHS is a program school, students may participate in extracurricular and athletic opportunities at their base high school, if that opportunity is not offered at ECHS
- The ECH Selection Committee will review each applicant's grades, attendance, and discipline reports in addition to MAP scores and other tests. **To be considered for admission, students may not be classified as gifted and talented and must be first generation college students**
- ECHS accepts approximately 100 rising ninth grade students per year

More info [here](#). Rubric for applications [here](#).

The Scholars Academy

- Must apply in 8th grade--Algebra 1 and English 1 are required, Geometry is highly recommended
- Scholars Academy is located on the campus of Coastal Carolina University
- Since The Scholars Academy is a program school, students may participate in extracurricular and athletic opportunities at their base high school, if that opportunity is not offered at The Scholars Academy
- Students have the opportunity to explore fields of study under the guidance of HCS and CCU and will accumulate approximately two years of college credits with successful completion of AP exams and CCU courses

More info [here](#). Rubric for application [here](#).

SCHOLARSHIP = \$\$

TUITION PER YEAR (23-24)

[HGTC](#) - \$5,130

[CCU](#) - \$11,640

[College of Charleston](#) - \$12,518

[USC](#) - \$12,288

[Clemson](#) - \$15,558

	Requirements	Award
SC HOPE Scholarship	<ul style="list-style-type: none"> Graduate from HS with at least 3.0 GPA 	<p>Up to \$2,800 (including book allowance) Freshmen ONLY</p> <p>*Could qualify for LIFE Scholarship for additional years by maintaining a 3.0 and earning at least 30 credits by the end of first academic year.</p>
SC LIFE Scholarship	<p>Students must meet <u>two</u> of the following three for a 4-year school:</p> <ul style="list-style-type: none"> Graduate from HS with at least 3.0 GPA Top 30% of graduating class 1100 on SAT or 24 on ACT by June of senior year <p>For a 2-year school:</p> <ul style="list-style-type: none"> Graduate from HS with at least 3.0 GPA 	<p>Up to \$5,000 (including book allowance) each academic year at a 4-year school.</p> <p>Up to the cost of tuition including a \$300 book allowance each year at a 2-year school.</p> <p><u>LIFE Scholarship Enhancement:</u></p> <ul style="list-style-type: none"> Students majoring in mathematics, science, and health could earn up to \$7,500 Up to 6 consecutive terms starting the second year
Palmetto Fellows Scholarship	<ul style="list-style-type: none"> Top 6% at the end of 10th, 11th, or 12th grade 1200 on SAT or 27 on ACT 3.5 cumulative GPA <p><u>Alternate Criteria:</u> 1400 on SAT or 32 on ACT and 4.0 GPA</p>	<ul style="list-style-type: none"> Up to \$6,700 for freshman year Up to \$7,500 sophomore, junior and senior years <p><u>PFS Enhancement:</u></p> <ul style="list-style-type: none"> Students majoring in mathematics, science, and health could earn up to \$10,000 Up to 6 consecutive terms starting the second year



MB

Questions?