

## JOIN THE EMERGENCY MEDICAL RESPONDER PATHWAY



TALK TO YOUR  
COUNSELOR TODAY

**Emergency Medical Responders** provide immediate lifesaving care to critical patients who access the emergency medical services system. EMRs have the knowledge and skills necessary to provide immediate lifesaving interventions while awaiting additional EMS resources to arrive. EMRs also provide assistance to higher-level personnel at the scene of emergencies and during transport. Emergency Medical Responders are a vital part of the comprehensive EMS response. Under medical oversight, Emergency Medical Responders perform basic interventions with minimal equipment.

[From the: *National EMS Scope of Practice Model*]

### PAY?

According to the Bureau of Labor Statistics (BLS), as of 2015, emergency medical technicians and paramedics who worked for local government agencies earned average annual incomes of \$39,000, while those employed by state agencies took home an average of \$59,890 a year. Emergency medical technicians employed by ambulatory health care providers earned an average of \$32,550 in 2015, per BLS data.



## Richwood High School

*"Make it a great day or not, the choice is yours."*

5901 Hwy 165 Bypass,  
Monroe, LA 71202

Phone: 318-361-0467

Fax: 318-361-9810

<http://richwoodhigh.opsb.net/>



## JUMP START

## Emergency Medical Responders

A JUMPSTART PATHWAY

**Louisiana Believes**

“ Every one of Louisiana's children should be on track to a college degree or a professional career. ”



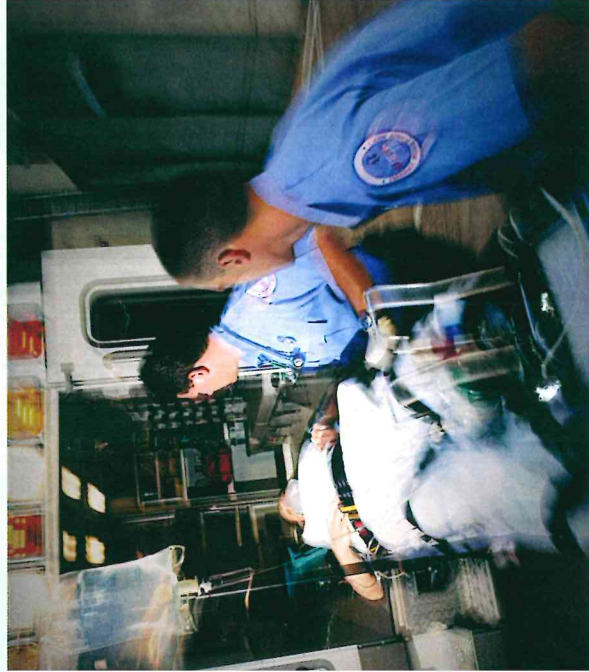
## WHAT DO EMERGENCY MEDICAL RESPONDERS DO?

- Deliver Oxygen
- Conduct a medical assessment
- Conduct a trauma assessment
- Apply cervical collar
- Perform basic dressing and bandaging techniques
- Assess burns
- Assess and manage shock
- Gather accurate vital signs (pulse, blood pressure, skin signs, respirations)
- Perform standard and emergency moves
- Assess and care for heat and cold related emergencies

## BLS SKILLS (BASIC LIFE SUPPORT)

- One Rescuer CPR on Infants, Children and Adults
- Two Rescuer CPR on Infants, Children and Adults
- Proper use of an AED (Automated External Defibrillator)
- Relieving choking in Infants, Children, and Adults

Students must pass a practical and written test to become CPR certified



<http://richwoodhigh.opsb.net/>

## JOB OUTLOOK?

Emergency medical responders are often the first on the scene of health crises, like heart attacks or traffic accidents. EMRs must communicate with their patients to determine whether any preexisting medical conditions exist, while also deciding on the correct initial treatment of the patient based on the current situation.

Some of the duties EMRs

provide include administering CPR, stabilizing the patient for transportation and reporting incidents to superiors. In their jobs, EMRs use equipment such as splints and wraps to address bone breaks or wounds. They might use respiratory devices to provide air to their patients. In some non-emergency cases, EMRs simply transport patients

from one facility to another, such as hospitals that specialize in a specific type of treatment.

EMRs have favorable job prospects overall. The field is growing much faster than the average career, at a rate of 23% from 2012-2022.

Areas of growth are available.