

LEA Name : Radnor Township SD  
Address : 135 S Wayne Ave  
Wayne, PA 19087

County : Delaware  
AUN Number : 125237603  
LEA Type : SD

**Annual Financial Report**  
**Accuracy Certification Statement**

For Fiscal Year Ending  
**6/30/2019**

Pennsylvania Department of Education  
&  
Office of Comptroller Operations  
PDE-2056: Intermediate Unit  
PDE-2057: School District, AVTS/CTC, Charter School,  
and Special Program Jointure

**CERTIFICATION:** By signing this page I agree that the electronic data submitted is a complete and accurate statement of the financial operations and status of the local education agency for the fiscal year. It has been prepared in accordance with generally accepted accounting principles and established Commonwealth of PA reporting guidelines.

*Kenneth E. Balle*  
Chief School Administrator Signature

2/11/20  
Date

*Michelle A. Dickson*  
Board Secretary Signature

2/11/2020  
Date

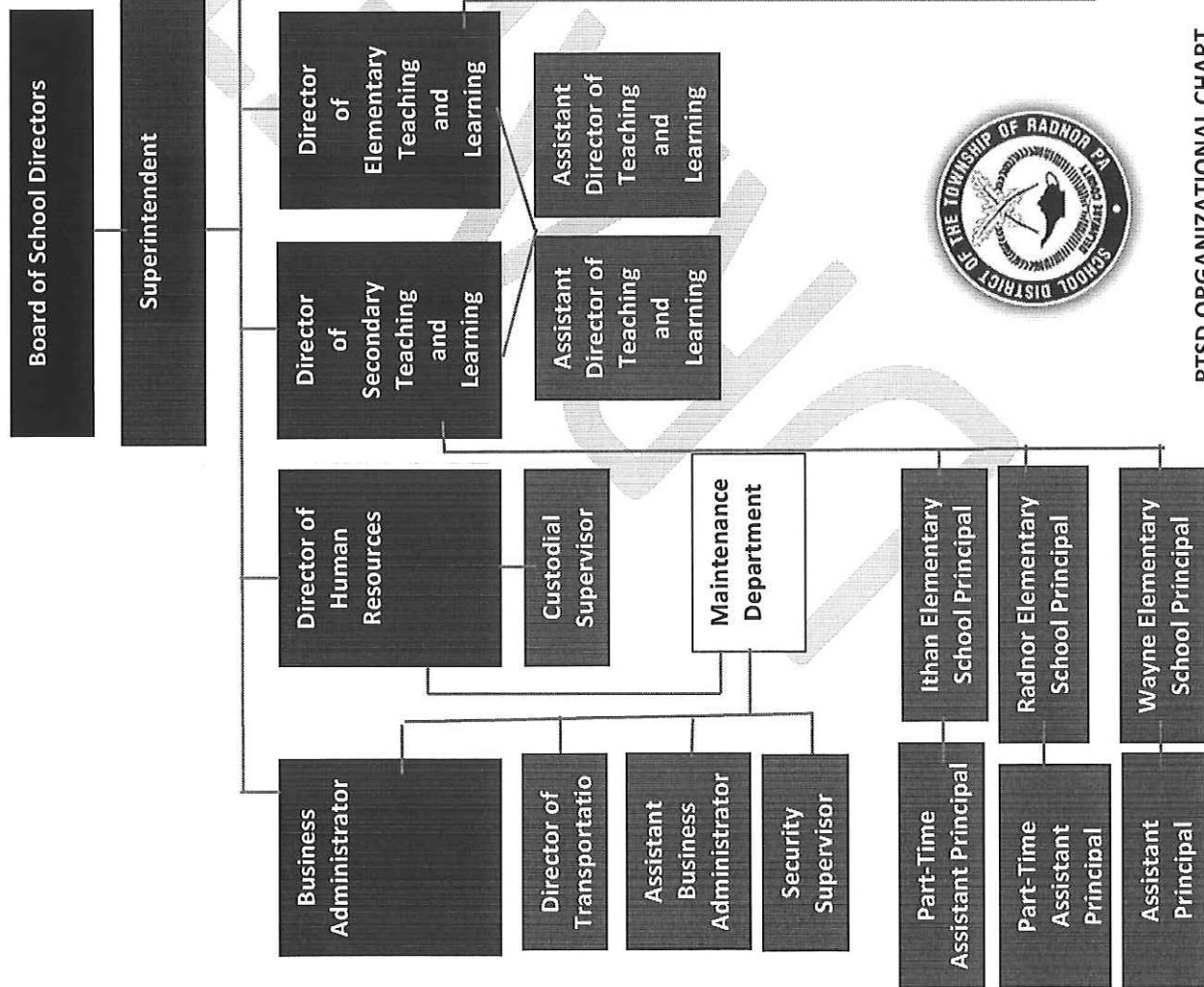
Penny Tansey  
Contact Person  
penny.tansey@rtisd.org  
Contact Person E-mail Address

(610)386-6108      Ext :  
Contact Person Telephone Number  
(610)688-6264  
Contact Person Fax Number



**KEY:**

**SCHOOL BOARD**  
**CABINET ADMINISTRATORS**  
**ADMINISTRATORS**  
**SCHOOL BUILDING ADMINISTRATORS**



**RTSD ORGANIZATIONAL CHART**

Revised 6/23/17

<u>Val Number</u>	<u>Description</u>	<u>Justification</u>
12045	REG - Athletic Fund 29: Local Revenue (6000) must exceed total of all other funding sources (7000, 8000, and 9000). Correct or enter a justification.  REG 6000, Fund 29 : \$33,520.00 REG 7000, 8000, 9000 - Fund 29: \$36,500.00	TRANSFERS IN WERE GREATER THEN LOCAL REVENUE GENERATED
41140	Expenditure Detail - There is an entry in function 5150- 990 object "Other". Please explain what constitutes "Other".  Expenditure 5150-990, Fund 39: \$10,313.00	BOND DISCOUNT ON CURRENT REFUNDING
42420	Expenditure Detail: Total current year 2700-513 expenditure varies from prior year by 10%. Correct the data or enter a justification.  2700-513, AFR Exp Detail: \$21,752.13 2700-513, PY AFR Amount: \$41,248.68	CHANGE IN TRANSPORTATION FOR A STUDENT

Amounts Expressed in Whole Dollars

	<u>General Fund</u> <u>(10)</u>	<u>Public Purpose Trust</u> <u>(27)</u>	<u>Other Compt Approved</u> <u>(28)</u>	<u>Athletic / Activity</u> <u>(29)</u>	<u>Capital Reserve (690.</u> <u>1850)</u> <u>(31)</u>
<b>Assets And Deferred Outflows Of Resources</b>					
<b>Assets</b>					
0100 Cash and Cash Equivalents	18,879,454			1,776	
0110 Investments	9,963,800				
0120 Taxes Receivable	966,634				
0130 Due From Other Funds					
0141 Due From Other Governments	3,496,369				
0142 State Revenue Receivable	229,768				
0143 Federal Revenue Receivable					
0145 Other Intergovernmental Revenue Receivable					
0146 Due from Primary Government					
0147 Due from Component Unit					
0150 Other Receivables	1,196,136			7,915	
0170 Inventories					
0180 Prepaid Expenses (Expenditures)					
0190 Other Current Assets					
<b>Total Assets</b>	<b>\$34,732,161</b>			<b>\$9,691</b>	
0910 Deferred Outflows of Resources					
<b>Total Assets And Deferred Outflows Of Resources</b>	<b>\$34,732,161</b>			<b>\$9,691</b>	

Amounts Expressed in Whole Dollars

	<u>Capital Reserve (1431)</u> <u>(32)</u>	<u>Other Capital Projects</u> <u>Fund</u> <u>(39)</u>	<u>Debt Service</u> <u>(40)</u>	<u>Permanent</u> <u>(90)</u>	<u>Total Governmental</u> <u>Funds</u>
<b>Assets And Deferred Outflows Of Resources</b>					
<b>Assets</b>					
0100 Cash and Cash Equivalents	5,424,230		1,429		24,306,889
0110 Investments			2,209,591		12,173,391
0120 Taxes Receivable					966,634
0130 Due From Other Funds					
0141 Due From Other Governments					3,496,369
0142 State Revenue Receivable					229,768
0143 Federal Revenue Receivable					
0145 Other Intergovernmental Revenue Receivable					
0146 Due from Primary Government					
0147 Due from Component Unit					
0150 Other Receivables					1,204,051
0170 Inventories					
0180 Prepaid Expenses (Expenditures)					
0190 Other Current Assets					
<b>Total Assets</b>	<b>\$5,424,230</b>		<b>\$2,211,020</b>		<b>\$42,377,102</b>
0910 Deferred Outflows of Resources					
<b>Total Assets And Deferred Outflows Of Resources</b>	<b>\$5,424,230</b>		<b>\$2,211,020</b>		<b>\$42,377,102</b>

Amounts Expressed in Whole Dollars	<u>General Fund</u> <u>(10)</u>	<u>Public Purpose Trust</u> <u>(27)</u>	<u>Other Compt Approved</u> <u>(28)</u>	<u>Athletic / Activity</u> <u>(29)</u>	<u>Capital Reserve (690.</u> <u>1850)</u> <u>(31)</u>
<b>Liabilities And Deferred Inflows Of Resources And Fund Balances</b>					
<b>Liabilities</b>					
0400 Due to Other Funds	29,247				
0411 Due to Other Governments					
0412 Due to Primary Government					
0413 Due to Component Unit					
0420 Accounts Payable	1,877,416			2,248	
0430 Contracts Payable					
0440 Current Portion of Long-Term Debt					
0450 Short-Term Payables					
0461 Accrued Salaries and Benefits	10,098,679				
0462 Payroll Deductions and Withholding					
0480 Unearned Revenues					
0490 Other Current Liabilities	473,621				
<b>Total Liabilities</b>	<b>\$12,478,963</b>			<b>\$2,248</b>	
0950 Deferred Inflows of Resources	571,661				
<b>Fund Balances</b>					
0810 Nonspendable Fund Balance					
0820 Restricted Fund Balance					
0830 Committed Fund Balance	13,602,581			7,443	
0840 Assigned Fund Balance					
0850 Unassigned Fund Balance	8,078,956				
<b>Total Fund Balances</b>	<b>\$21,681,537</b>			<b>\$7,443</b>	
<b>Total Liabilities, Deferred Inflows Of Resources And Fund Balances</b>	<b>\$34,732,161</b>			<b>\$9,691</b>	

Amounts Expressed in Whole Dollars

	<u>Capital Reserve (1431)</u> <u>(32)</u>	<u>Other Capital Projects</u> <u>Fund</u> <u>(39)</u>	<u>Debt Service</u> <u>(40)</u>	<u>Permanent</u> <u>(90)</u>	<u>Total Governmental</u> <u>Funds</u>
<b>Liabilities And Deferred Inflows Of Resources And Fund Balances</b>					
<b>Liabilities</b>					
0400 Due to Other Funds					29,247
0411 Due to Other Governments					
0412 Due to Primary Government					
0413 Due to Component Unit					
0420 Accounts Payable	74,440				1,954,104
0430 Contracts Payable					
0440 Current Portion of Long-Term Debt					
0450 Short-Term Payables					
0461 Accrued Salaries and Benefits					10,098,679
0462 Payroll Deductions and Withholding					
0480 Unearned Revenues					
0490 Other Current Liabilities					473,621
<b>Total Liabilities</b>	<b>\$74,440</b>				<b>\$12,555,651</b>
0950 Deferred Inflows of Resources					571,661
<b>Fund Balances</b>					
0810 Nonspendable Fund Balance					
0820 Restricted Fund Balance	5,349,790		2,211,020		7,560,810
0830 Committed Fund Balance					13,610,024
0840 Assigned Fund Balance					
0850 Unassigned Fund Balance					8,078,956
<b>Total Fund Balances</b>	<b>\$5,349,790</b>		<b>\$2,211,020</b>		<b>\$29,249,790</b>
<b>Total Liabilities, Deferred Inflows Of Resources And Fund Balances</b>	<b>\$5,424,230</b>		<b>\$2,211,020</b>		<b>\$42,377,102</b>

Amounts Expressed in Whole Dollars	<u>General Fund</u> <u>(10)</u>	<u>Public Purpose Trust</u> <u>(27)</u>	<u>Other Compt Approved</u> <u>(28)</u>	<u>Athletic / Activity</u> <u>(29)</u>	<u>Capital Reserve (690.</u> <u>1850)</u> <u>(31)</u>
<b>Revenues</b>					
6000 Revenue from Local Sources	83,042,910			33,520	
7000 Revenue from State Sources	15,127,252				
8000 Revenue from Federal Sources	1,113,356				
<b>Total Revenues</b>	<b>\$99,283,518</b>			<b>\$33,520</b>	
<b>Expenditures</b>					
1000 Instruction	56,750,032				
2000 Support Services	31,441,262				
3000 Operation of Non-Instructional Services	1,399,528			66,884	
4000 Facilities Acquisition, Construction and Improvement Services					
5110 Debt Service	6,851,136				
5130 Refund of Prior Year Revenues / Receipts					
<b>Total Expenditures</b>	<b>\$96,441,958</b>			<b>\$66,884</b>	
<b>Excess (Deficiency) Of Revenues Over Expenditures</b>	<b>\$2,841,560</b>			<b>(\$33,364)</b>	
<b>Other Financing Sources (Uses)</b>					
9110 Face Value of Bonds Issued					
9120 Proceeds from Refunding of Bonds					
9130 Bond Premiums					
9200 Proceeds from Extended-Term Financing					
9300 Interfund Transfers - IN				36,500	
9400 Sale of or Compensation for Loss of Fixed Assets	1,429				
9710 Transfers from Component Units					
9720 Transfers from Primary Governments					
9910 Other Financing Sources Not Listed in the 9000 Series					
9990 Insurance Recoveries	233,802				
5120 Debt Service – Refunded Bonds					
5150 Bond Discounts					
5200 Interfund Transfers – Out	1,593,684				
5300 Transfers Out to Component Units/Primary Governments					
<b>Total Other Financing Sources (Uses)</b>	<b>(\$1,358,453)</b>			<b>\$36,500</b>	

Amounts Expressed in Whole Dollars	<u>Capital Reserve (1431)</u> <u>(32)</u>	<u>Other Capital Projects</u> <u>Fund</u> <u>(39)</u>	<u>Debt Service</u> <u>(40)</u>	<u>Permanent</u> <u>(90)</u>	<u>Total Governmental</u> <u>Funds</u>
<b>Revenues</b>					
6000 Revenue from Local Sources	47,330		186,813		83,310,573
7000 Revenue from State Sources					15,127,252
8000 Revenue from Federal Sources					1,113,356
<b>Total Revenues</b>	<b>\$47,330</b>		<b>\$186,813</b>		<b>\$99,551,181</b>
<b>Expenditures</b>					
1000 Instruction					56,750,032
2000 Support Services	477,434	341,987			32,260,683
3000 Operation of Non-Instructional Services					1,466,412
4000 Facilities Acquisition, Construction and Improvement Services	149,887				149,887
5110 Debt Service					6,851,136
5130 Refund of Prior Year Revenues / Receipts					
<b>Total Expenditures</b>	<b>\$627,321</b>	<b>\$341,987</b>			<b>\$97,478,150</b>
<b>Excess (Deficiency) Of Revenues Over Expenditures</b>	<b>(\$579,991)</b>	<b>(\$341,987)</b>	<b>\$186,813</b>		<b>\$2,073,031</b>
<b>Other Financing Sources (Uses)</b>					
9110 Face Value of Bonds Issued					
9120 Proceeds from Refunding of Bonds		19,155,000			19,155,000
9130 Bond Premiums		40,381			40,381
9200 Proceeds from Extended-Term Financing					
9300 Interfund Transfers - IN	1,275,795		281,389		1,593,684
9400 Sale of or Compensation for Loss of Fixed Assets					1,429
9710 Transfers from Component Units					
9720 Transfers from Primary Governments					
9910 Other Financing Sources Not Listed in the 9000 Series					
9990 Insurance Recoveries					233,802
5120 Debt Service – Refunded Bonds		18,843,081			18,843,081
5150 Bond Discounts		10,313			10,313
5200 Interfund Transfers – Out					1,593,684
5300 Transfers Out to Component Units/Primary Governments					
<b>Total Other Financing Sources (Uses)</b>	<b>\$1,275,795</b>	<b>\$341,987</b>	<b>\$281,389</b>		<b>\$577,218</b>

Amounts Expressed in Whole Dollars	<u>General Fund</u> <u>(10)</u>	<u>Public Purpose Trust</u> <u>(27)</u>	<u>Other Compt Approved</u> <u>(28)</u>	<u>Athletic / Activity</u> <u>(29)</u>	<u>Capital Reserve (690.</u> <u>1850)</u> <u>(31)</u>
<b>Special And Extraordinary Items</b>					
9920 Special Items – Gains					
9930 Extraordinary Items – Gains					
5520 Special Items – Losses					
5530 Extraordinary Items – Losses					
<b>Net Change In Fund Balances</b>	<b>\$1,483,107</b>			<b>\$3,136</b>	
<b>Fund Balance</b>					
0001 Fund Balance - Beginning of Fiscal Year	20,198,431			4,307	
<b>Fund Balance - End Of Year</b>	<b>\$21,681,538</b>			<b>\$7,443</b>	

Amounts Expressed in Whole Dollars	<u>Capital Reserve (1431)</u> <u>(32)</u>	<u>Other Capital Projects</u> <u>Fund</u> <u>(39)</u>	<u>Debt Service</u> <u>(40)</u>	<u>Permanent</u> <u>(90)</u>	<u>Total Governmental</u> <u>Funds</u>
<b>Special And Extraordinary Items</b>					
9920 Special Items – Gains					
9930 Extraordinary Items – Gains					
5520 Special Items – Losses					
5530 Extraordinary Items – Losses					
<b>Net Change In Fund Balances</b>	<b>\$695,804</b>		<b>\$468,202</b>		<b>\$2,650,249</b>
<b>Fund Balance</b>					
0001 Fund Balance - Beginning of Fiscal Year	4,653,987		1,742,818		26,599,543
<b>Fund Balance - End Of Year</b>	<b>\$5,349,791</b>		<b>\$2,211,020</b>		<b>\$29,249,792</b>

Amounts Expressed in Whole Dollars	<u>Food Service</u> <u>(51)</u>	<u>Child Care</u> <u>Operations</u> <u>(52)</u>	<u>Other Enterprise</u> <u>(58)</u>	<u>TOTAL</u>	<u>Internal Service</u> <u>(60)</u>
<b>Assets And Deferred Outflows Of Resources</b>					
<b>Current Assets</b>					
0100 Cash and Cash Equivalents	1,154,681			1,154,681	
0110 Investments					
0130 Due From Other Funds	29,247			29,247	
0141 Due From Other Governments					
0142 State Revenue Receivable	1,540			1,540	
0143 Federal Revenue Receivable	12,599			12,599	
0146 Due from Primary Government					
0147 Due from Component Unit					
0150 Other Receivables	4,257			4,257	
0170 Inventories	23,026			23,026	
0180 Prepaid Expenses (Expenditures)					5,902,886
0190 Other Current Assets					
<b>Total Current Assets</b>	<b>\$1,225,350</b>			<b>\$1,225,350</b>	<b>\$5,902,886</b>
<b>Noncurrent Assets</b>					
0211 Land					
0212 Site Improvements (Net)					
0220 Buildings and Building Improvements (Net)					
0230 Machinery, Equipment and Furniture (Net)	199,297			199,297	
0250 Construction in Progress					
0260 Long Term Prepayments					
0290 Other Noncurrent Assets					
<b>Total Noncurrent Assets</b>	<b>\$199,297</b>			<b>\$199,297</b>	
0910 Deferred Outflows of Resources	217,478			217,478	
<b>Total Assets And Deferred Outflows Of Resources</b>	<b>\$1,642,125</b>			<b>\$1,642,125</b>	<b>\$5,902,886</b>

Amounts Expressed in Whole Dollars	<u>Food Service</u> <u>(51)</u>	<u>Child Care</u> <u>Operations</u> <u>(52)</u>	<u>Other Enterprise</u> <u>(58)</u>	<u>TOTAL</u>	<u>Internal Service</u> <u>(60)</u>
<b>Liabilities And Deferred Inflows Of Resources And Net Position</b>					
<b>Current Liabilities</b>					
0400 Due to Other Funds					
0411 Due to Other Governments					
0413 Due to Component Unit					
0420 Accounts Payable	92,012			92,012	
0430 Contracts Payable					
0440 Current Portion of Long-Term Debt					
0450 Short-Term Payables					
0461 Accrued Salaries and Benefits					
0462 Payroll Deductions and Withholding					
0480 Unearned Revenues	103,114			103,114	
0490 Other Current Liabilities					
<b>Total Current Liabilities</b>	<b>\$195,126</b>			<b>\$195,126</b>	
<b>Noncurrent Liabilities</b>					
0510 Bonds Payable					
0520 Extended-Term Financing Agreements Payable					
0530 Lease-Purchase Obligations					
0540 Accumulated Compensated Absences					
0550 Authority Lease Obligations					
0560 Other Post-Employment Benefits (OPEB)	103,595			103,595	
0570 Net Pension Liability	1,499,534			1,499,534	
0599 Other Noncurrent Liabilities					
<b>Total Noncurrent Liabilities</b>	<b>\$1,603,129</b>			<b>\$1,603,129</b>	
<b>Total Liabilities</b>	<b>\$1,798,255</b>			<b>\$1,798,255</b>	
0950 Deferred Inflows of Resources	67,367			67,367	
<b>Net Position</b>					
0791 Net Investment in Capital Assets	199,297			199,297	
0008 Restricted Net Position (0792 – 0798)					
0799 Unrestricted Net Position	(422,794)			(422,794)	5,902,886
<b>Total Net Position</b>	<b>(\$223,497)</b>			<b>(\$223,497)</b>	<b>\$5,902,886</b>
<b>Total Liabilities And Deferred Inflows Of Resources And Net Position</b>	<b>\$1,642,125</b>			<b>\$1,642,125</b>	<b>\$5,902,886</b>

Amounts Expressed in Whole Dollars	<u>Food Service</u> <u>(51)</u>	<u>Child Care Operations</u> <u>(52)</u>	<u>Other Enterprise</u> <u>(58)</u>	<u>TOTAL</u>	<u>Internal Service</u> <u>(60)</u>
<b>Operating Revenues</b>					
6600 Food Service Revenue	1,515,755			1,515,755	
0071 Charges for Services					10,958,654
0072 Other Operating Revenue					
<b>Total Operating Revenues</b>	<b>\$1,515,755</b>			<b>\$1,515,755</b>	<b>\$10,958,654</b>
<b>Operating Expenses</b>					
100 Personnel Services – Salaries	473,582			473,582	
200 Personnel Services – Employee Benefits	360,447			360,447	8,199,980
300 Purchased Professional and Technical Services	51,495			51,495	275,243
400 Purchased Property Services	24,107			24,107	
500 Other Purchased Services	53,300			53,300	
600 Supplies	890,539			890,539	
740 Depreciation	21,489			21,489	
810 Dues and Fees					
890 Miscellaneous Expenditures					
<b>Total Operating Expenses</b>	<b>\$1,874,959</b>			<b>\$1,874,959</b>	<b>\$8,475,223</b>
<b>Operating Income (Loss)</b>	<b>(\$359,204)</b>			<b>(\$359,204)</b>	<b>\$2,483,431</b>
<b>Non Operating Revenues (Expenses)</b>					
6500 Earnings on Investments	13,937			13,937	158,029
6920 Contributions and Donations from Private Sources					
6930 Gains or Losses on Sale of Fixed Assets					
6991 Refunds of a Prior Year Expenditure					
7000 Revenue from State Sources	124,249			124,249	
8000 Revenue from Federal Sources	309,022			309,022	
9990 Insurance Recoveries					
820 Claims and Judgments Against the LEA					
830 Interest					
<b>TOTAL Non Operating Revenues (Expenses)</b>	<b>\$447,208</b>			<b>\$447,208</b>	<b>\$158,029</b>
<b>Income (Loss) Before Contributions And Transfers</b>	<b>\$88,004</b>			<b>\$88,004</b>	<b>\$2,641,460</b>

Amounts Expressed in Whole Dollars	<u>Food Service</u> <u>(51)</u>	<u>Child Care Operations</u> <u>(52)</u>	<u>Other Enterprise</u> <u>(58)</u>	<u>TOTAL</u>	<u>Internal Service</u> <u>(60)</u>
<b>Contributions, Transfers, and Special and Extraordinary Items</b>					
5200 Interfund Transfers – Out					
5300 Transfers Out to Component Units/Primary Governments					
5520 Special Items – Losses					
5530 Extraordinary Items – Losses					
9300 Interfund Transfers - IN					
9500 Capital Contributions					
9700 Transfers IN From Component Units/Primary Governments					
9920 Special Items – Gains					
9930 Extraordinary Items – Gains					
<b>Change In Net Position</b>	<b>\$88,004</b>			<b>\$88,004</b>	<b>\$2,641,460</b>
0002 Net Position - Beginning of Fiscal Year	(311,501)			(311,501)	3,261,426
0003 Accounting Changes / Residual Equity Transfers					
<b>Net Position - End Of Year</b>	<b>(\$223,497)</b>			<b>(\$223,497)</b>	<b>\$5,902,886</b>

Amounts Expressed in Whole Dollars	<u>Food Service</u> <u>(51)</u>	<u>Child Care Operations</u> <u>(52)</u>	<u>Other Enterprise</u> <u>(58)</u>	<u>TOTAL</u>	<u>Internal Service(60)</u>
<b>Cash Flows From Operating Activities</b>					
0011 Cash Receipts From Users	1,520,880			1,520,880	
0012 Cash Receipts From Assessments Made to Other Funds					10,958,654
0013 Cash Receipts From Earnings on Investments					
0014 Cash Receipts From Other Operating Revenue					
0015 Cash Payments To Employees For Services	845,402			845,402	
0016 Cash Payments For Insurance Claims					10,841,440
0017 Cash Payments To Suppliers For Goods and Services	892,404			892,404	
0018 Cash Payments For Other Operating Expenses					275,243
<b>Net Cash Provided By (Used For) Operating Activities</b>	<b>(\$216,926)</b>			<b>(\$216,926)</b>	<b>(\$158,029)</b>
<b>Cash Flows From Non-Capital Financing Activities</b>					
0021 Receipts From Local Sources - 6000					
0022 Receipts From State Sources - 7000	128,457			128,457	
0023 Receipts From Federal Sources -8000	284,813			284,813	
0024 Notes and Loans Received (Repaid)					
0025 Interest Paid on Notes/Loans - 5100-830					
0026 Operating Transfers In (Out)/Residual Equity Trans					
0027 Operating Transfers In (Out) Primary Government / Comp Unit					
0028 Receipts From Refund of Prior Year Expenditures - 6991					
0029 Special and Extraordinary Gains (losses)					
0030 Receipts from Insurance Recoveries -9990					
<b>Net Cash Prov By (Used for) Non-Capital Financing Activities</b>	<b>\$413,270</b>			<b>\$413,270</b>	
<b>Cash Flows From Capital and Related Financing Activities</b>					
0031 Payments For Fac Acq, Const, and Imp - 4000	(15,193)			(15,193)	
0032 Gain / (Loss) on Sale of Fixed Assets - 6930					
0033 Proceeds From Extended Term Financing - 9200					
0034 Principal Paid on Financing Agreements					
0035 Interest Paid on Financing Agreements - 5100-830					
0036 (Inc) Dec in Contributed Capital					
<b>Net Cash Prov By (Used for) Capital and Related Financing Activities</b>	<b>(\$15,193)</b>			<b>(\$15,193)</b>	
<b>Cash Flows From Investing Activities</b>					
0041 Earnings on Investments - 6500	13,937			13,937	158,029
0042 Purchase of Inv Securities / Deposits to Inv Pools					
0043 Receipts From Investment Pool Withdrawals					
0044 Proceeds from Sale and Maturity of Inv Securities					

LEA : 125237603 Radnor Township SD

Printed 2/19/2020 9:52:56 AM

0045 Loans Received (Paid)

<b>Net Cash Prov By (Used for) Investing Activities</b>	<b>\$13,937</b>	<b>\$13,937</b>	<b>\$158,029</b>
---	-----------------	-----------------	------------------

	<u>Food Service</u> <u>(51)</u>	<u>Child Care Operations</u> <u>(52)</u>	<u>Other Enterprise</u> <u>(58)</u>	<u>TOTAL</u>	<u>Internal Service</u> <u>(60)</u>
<b>Net Increase (Decrease) in Cash Flows</b>	195,088			195,088	
0004 Cash and Cash Equivalents Beginning of Year					
<b>Cash and Cash Equivalents at Year End</b>	<b>\$195,088</b>			<b>\$195,088</b>	
<hr/>					
<b>Reconciliation of Operating Income (Loss) To Net Cash Provided by (Used For) Operating Activities</b>					
0005 Operating Income (Loss) per REP	(359,204)			(359,204)	2,483,431
<b>Adjustments</b>					
0051 Depreciation and Net Amortization	21,489			21,489	
0052 Provision for Uncollectible Accounts					
0053 Other Adjustments	58,128			58,128	
<b>Effect of Changes in Assets, Liabilities, Deferred Outflows and Deferred Inflows</b>					
0054 (Inc) Dec In Accounts Receivable (0120-0150)	(310)			(310)	
0055 Advances to Other Funds (0160)	(29,247)			(29,247)	
0056 (Inc) Dec in Inventories (0170)	6,501			6,501	
0057 (Inc) Dec in Prepaid Expenses (0180)					
0058 (Inc) Dec in Other Current or Noncurrent Assets					(2,641,460)
0064 Deferred Outflows (0910)	65,780			65,780	
0059 Inc (Dec) in Accounts Payable (0400-0450)	62,408			62,408	
0060 Inc (Dec) in Accrued Salaries/Benefits (0461)					
0065 Inc (Dec) in Net Pension Liabilities (0570)	(70,566)			(70,566)	
0066 Inc (Dec) in Other Postemp Benefit Oblig (0560)	569			569	
0061 Inc (Dec) in Payroll Deductions/Withholding (0462)					
0062 Inc (Dec) in Unearned Revenue (0480)	5,435			5,435	
0063 Inc (Dec) in Other Current or Noncurrent Liabilities	(5,612)			(5,612)	
0067 Deferred Inflows (0950)	27,703			27,703	
<b>Total Adjustments</b>	<b>\$142,278</b>			<b>\$142,278</b>	<b>(\$2,641,460)</b>
<b>Cash Provided By (Used for) Total</b>	<b>(\$216,926)</b>			<b>(\$216,926)</b>	<b>(\$158,029)</b>

**COMBINED STATEMENT OF CASH FLOWS**  
**SCHEDULE OF NONCASH INVESTING, CAPITAL, AND FINANCING ACTIVITIES**

Explanation of Transaction and Balance Sheet Effect	Amount
USDA donated commodities	58,128
<b>Total</b>	<b>\$58,128</b>

LEA : 125237603 Radnor Township SD

Printed 2/19/2020 9:52:59 AM

Amounts Expressed in Whole Dollars

	<u>Private Purpose Trust</u> (71)	<u>Investment Trust</u> (72)	<u>Pension Trust</u> (73)	<u>Activity</u> (81)
<b>Assets And Deferred Outflows Of Resources</b>				
<b>Assets</b>				
0100 Cash and Cash Equivalents	86,756			62,714
0110 Investments	261,000			
0130 Due From Other Funds				
0147 Due from Component Unit				
0150 Other Receivables				
0170 Inventories				
0180 Prepaid Expenses (Expenditures)				
0190 Other Current Assets				
0220 Buildings and Building Improvements (Net)				
0230 Machinery, Equipment and Furniture (Net)				
<b>Total Assets</b>	<b>\$347,756</b>			<b>\$62,714</b>
0910 Deferred Outflows of Resources				
<b>Total Assets And Deferred Outflows Of Resources</b>	<b>\$347,756</b>			<b>\$62,714</b>

LEA : 125237603 Radnor Township SD

Printed 2/19/2020 9:52:59 AM

Amounts Expressed in Whole Dollars

	<u>Other Agency</u> <u>(89)</u>	<u>Discrete Component Units</u> <u>(98)</u>	<u>Discrete Component Units</u> <u>(99)</u>	<u>Total Fiduciary Funds</u>
<b>Assets And Deferred Outflows Of Resources</b>				
<b>Assets</b>				
0100 Cash and Cash Equivalents				149,470
0110 Investments				261,000
0130 Due From Other Funds				
0147 Due from Component Unit				
0150 Other Receivables				
0170 Inventories				
0180 Prepaid Expenses (Expenditures)				
0190 Other Current Assets				
0220 Buildings and Building Improvements (Net)				
0230 Machinery, Equipment and Furniture (Net)				
<b>Total Assets</b>				<b>\$410,470</b>
0910 Deferred Outflows of Resources				
<b>Total Assets And Deferred Outflows Of Resources</b>				<b>\$410,470</b>

LEA : 125237603 Radnor Township SD

Printed 2/19/2020 9:52:59 AM

Amounts Expressed in Whole Dollars

Private Purpose Trust  
(71)

Investment Trust  
(72)

Pension Trust  
(73)

Activity  
(81)

**Liabilities, Deferred Inflows Of Resources And Net Position**

**Liabilities**

0400 Due to Other Funds				
0411 Due to Other Governments				
0412 Due to Primary Government				
0413 Due to Component Unit				
0420 Accounts Payable				
0430 Contracts Payable				
0450 Short-Term Payables				
0461 Accrued Salaries and Benefits				
0462 Payroll Deductions and Withholding				
0480 Unearned Revenues				
0490 Other Current Liabilities				62,714

**Total Liabilities** **\$62,714**

0950 Deferred Inflows of Resources

**Net Position**

0791 Net Investment in Capital Assets				
0009 Restricted Net Position (0792 – 0798)		347,756		
0799 Unrestricted Net Position				

**Total Net Position** **\$347,756**

**Total Liabilities, Deferred Inflows Of Resources And Net Position** **\$347,756** **\$62,714**

LEA : 125237603 Radnor Township SD

Printed 2/19/2020 9:52:59 AM

Amounts Expressed in Whole Dollars

<u>Other Agency</u>	<u>Discrete Component Units</u>	<u>Discrete Component Units</u>	<u>Total Fiduciary Funds</u>
(89)	(98)	(99)	

**Liabilities, Deferred Inflows Of Resources And Net Position**

**Liabilities**

0400 Due to Other Funds			
0411 Due to Other Governments			
0412 Due to Primary Government			
0413 Due to Component Unit			
0420 Accounts Payable			
0430 Contracts Payable			
0450 Short-Term Payables			
0461 Accrued Salaries and Benefits			
0462 Payroll Deductions and Withholding			
0480 Unearned Revenues			
0490 Other Current Liabilities			62,714

<b>Total Liabilities</b>			<b>\$62,714</b>
--------------------------	--	--	-----------------

0950 Deferred Inflows of Resources

**Net Position**

0791 Net Investment in Capital Assets			
0009 Restricted Net Position (0792 – 0798)			347,756
0799 Unrestricted Net Position			

<b>Total Net Position</b>			<b>\$347,756</b>
---------------------------	--	--	------------------

<b>Total Liabilities, Deferred Inflows Of Resources And Net Position</b>			<b>\$410,470</b>
--	--	--	------------------

Amounts Expressed in Whole Dollars	<u>Private Purpose Trust</u> <u>(71)</u>	<u>Investment Trust</u> <u>(72)</u>	<u>Pension Trust</u> <u>(73)</u>	<u>Discrete Component</u> <u>Units</u> <u>(98)</u>	<u>Discrete Component</u> <u>Units</u> <u>(99)</u>	<u>Total Fiduciary</u> <u>Funds</u>
<b>Additions</b>						
0091 Gifts and Contributions	13,787					13,787
0092 Other Additions						
<b>Deductions</b>						
0093 Scholarships Awarded	15,950					15,950
0094 Other Deductions						
<b>Change In Net Position</b>	<b>(\$2,163)</b>					<b>(\$2,163)</b>
0006 Net Position – Beginning of Fiscal Year	349,919					349,919
0007 Net Position Held in Trust for Pension Benefits						
<b>Net Position - End of Fiscal Year</b>	<b>\$347,756</b>					<b>\$347,756</b>

	<u>Revenue Reported In Current Year</u>	<u>Current Year Tax Accrual</u>	<u>Prior Year Tax Accrual</u>	<u>Taxes Collected In Current Year</u>
<b><u>Revenue from Local Sources</u></b>				
6111 Current Real Estate Taxes	75,064,160.36			75,064,160.36
6112 Interim Real Estate Taxes	506,951.18			506,951.18
6113 Public Utility Realty Taxes	75,300.95			75,300.95
6114 Payments in Lieu of Current Taxes - State / Local	222,669.65			222,669.65
6143 Current Act 511 Local Services Taxes	112,691.49			112,691.49
6153 Current Act 511 Real Estate Transfer Taxes	2,115,130.01			2,115,130.01
6411 Delinquent Real Estate Taxes	901,938.73			901,938.73
6500 Earnings on Investments	837,369.29			
6700 Revenues from LEA Activities	27,722.00			
6832 Federal IDEA Revenue Received as Pass Through	411,839.00			
6910 Rentals	192,057.58			
6920 Contributions and Donations from Private Sources	77,315.23			
6944 Receipts from Other LEAs in Pennsylvania - Education	1,976,640.98			
6991 Refunds of a Prior Year Expenditure	165,902.16			
6999 Other Revenues Not Specified Above	355,221.25			
<b>TOTAL Revenue from Local Sources</b>	<b>\$83,042,909.86</b>			<b>\$78,998,842.37</b>

**Revenue Reported  
In Current Year**

**Revenue from State Sources**

7110 Basic Education Funding	2,182,357.27		
7160 Tuition for Orphans Subsidy	65,764.25		
7271 Special Education funds for School-Aged Pupils	1,506,484.55		
7299 Program Revenues Not Listed Previously in the 7200 Series	1,784.49		
7311 Pupil Transportation Subsidy	402,991.11		
7312 Nonpublic and Charter School Pupil Transportation Subsidy	410,025.00		
7320 Rental and Sinking Fund Payments / Building Reimbursement Subsidy	108,424.31		
7330 Health Services (Medical, Dental, Nurse, Act 25)	175,641.70		
7340 State Property Tax Reduction Allocation	1,453,154.16		
7361 School Safety and Security Grants	25,000.00		
7505 Ready to Learn Block Grant	113,925.00		
7599 Other State Revenue Not Listed Elsewhere in the 7000 Series	13,135.39		
7810 State Share of Social Security and Medicare Taxes	1,572,433.58		
7820 State Share of Retirement Contributions	7,096,130.77		
<b>TOTAL Revenue from State Sources</b>	<b>\$15,127,251.58</b>		

**Revenue Reported  
In Current Year**

**Revenue from Federal Sources**

8514 NCLB, Title I - Improving the Academic Achievement of the Disadvantaged	293,629.22		
8515 NCLB, Title II - Preparing, Training and Recruiting High Quality Teachers and Principals	97,833.00		
8516 NCLB, Title III - Language Instruction for Limited English Proficient and Immigrant Students	28,461.00		
8517 NCLB, Title IV - 21St Century Schools	8,431.67		
8731 ARRA - Build America Bonds	78,624.00		
8732 ARRA - Qualified School Construction Bonds (QSCB)	169,778.42		
8810 School-Based Access Medicaid Reimbursement Program (SBAP) Reimbursements (Access)	436,598.39		
<b>TOTAL Revenue from Federal Sources</b>	<b>\$1,113,355.70</b>		

**Revenue Reported  
In Current Year**

**Other Financing Sources**

9400 Sale of or Compensation for Loss of Fixed Assets	1,429.06		
9990 Insurance Recoveries	233,802.22		
<b>TOTAL Other Financing Sources</b>	<b>\$235,231.28</b>		
<b>TOTAL FROM ALL SOURCES</b>	<b>\$99,518,748.42</b>		<b>\$78,998,842.37</b>

Revenue from Local Sources	83,042,909.86
Revenue from State Sources	15,127,251.58
Revenue from Federal Sources	1,113,355.70
Other Financing Sources	235,231.28
<b>TOTAL FROM ALL SOURCES</b>	<b>\$99,518,748.42</b>

**General Fund (10)**

	<u>Total</u>
<b>1000 Instruction</b>	
<b>100 Personnel Services – Salaries</b>	
100 Personnel Services – Salaries	27,650,758.05
<b>Total Personnel Services – Salaries</b>	<b>\$27,650,758.05</b>
<b>200 Personnel Services – Employee Benefits</b>	
210 Group Insurance – Contracted Provider	4,744,422.28
220 Social Security Contributions	2,050,320.43
230 PSERS Retirement Contributions	9,198,384.84
250 Unemployment Compensation	10,224.05
260 Workers’ Compensation	249,118.54
270 Group Insurance – Self-Insurance	1,115,918.29
<b>Total Personnel Services – Employee Benefits</b>	<b>\$17,368,388.43</b>
<b>300 Purchased Professional and Technical Services</b>	
322 Professional Educational Services – Ius	777,680.30
329 Professional Educational Services – Other	699,821.69
330 Other Professional Services	1,196,498.29
340 Technical Services	4,847.25
390 Other Purchased Professional and Technical Services	252,585.91
<b>Total Purchased Professional and Technical Services</b>	<b>\$2,931,433.44</b>
<b>400 Purchased Property Services</b>	
430 Repairs and Maintenance Services	160,296.45
440 Rentals	706.75
<b>Total Purchased Property Services</b>	<b>\$161,003.20</b>
<b>500 Other Purchased Services</b>	
510 Student Transportation Services	4,144.95
530 Communications	16.96
550 Printing and Binding	1,594.76
561 Tuition To Other School Districts Within the State	84,399.70
562 Tuition To Pennsylvania Charter Schools	443,448.00
563 Tuition To Nonpublic Schools	4,604,872.59
564 Tuition To Career and Technology Centers	228,753.70
566 Tuition To Institutions of Higher Education and Technical Institutes	1,148,553.00
567 Tuition To Approved Private Schools (APS) and PA Chartered Schools for the Deaf and Blind	342,138.44
580 Travel	2,358.22
<b>Total Other Purchased Services</b>	<b>\$6,860,280.32</b>
<b>600 Supplies</b>	
610 General Supplies	735,493.86
630 Food	12,170.16
640 Books and Periodicals	230,201.35
<b>Total Supplies</b>	<b>\$977,865.37</b>
<b>700 Property</b>	
752 Capital Equipment – Original and Additional	246,769.99
756 Capitalized Technology Equipment – Original	549,109.53
<b>Total Property</b>	<b>\$795,879.52</b>

LEA : 125237603 Radnor Township SD

Printed 2/19/2020 9:53:09 AM

**General Fund (10)**

<b>1000 Instruction</b>	<b><u>Total</u></b>
<b>800 <u>Other Objects</u></b>	
810 Dues and Fees	4,423.94
<b>Total Other Objects</b>	<b>\$4,423.94</b>
<b>Total 1000 Instruction</b>	<b>\$56,750,032.27</b>

**General Fund (10)**

**1100 Regular Programs – Elementary / Secondary**

	<u>Elementary</u>	<u>Secondary</u>	<u>Federal</u>	<u>Total</u>
<b>100 Personnel Services – Salaries</b>				
100 Personnel Services – Salaries	11,065,633.86	11,239,372.56	241,947.48	22,546,953.90
<b>Total Personnel Services – Salaries</b>	<b>\$11,065,633.86</b>	<b>\$11,239,372.56</b>	<b>\$241,947.48</b>	<b>\$22,546,953.90</b>
<b>200 Personnel Services – Employee Benefits</b>				
210 Group Insurance – Contracted Provider	1,858,999.06	2,069,241.29	47,374.57	3,975,614.92
220 Social Security Contributions	823,371.44	835,445.47	18,152.60	1,676,969.51
230 PSERS Retirement Contributions	3,713,768.48	3,736,714.61	80,753.58	7,531,236.67
250 Unemployment Compensation	5,016.99	5,016.98		10,033.97
260 Workers' Compensation	99,896.00	101,389.16	1,881.13	203,166.29
270 Group Insurance – Self-Insurance	447,225.66	502,740.43	11,199.42	961,165.51
<b>Total Personnel Services – Employee Benefits</b>	<b>\$6,948,277.63</b>	<b>\$7,250,547.94</b>	<b>\$159,361.30</b>	<b>\$14,358,186.87</b>
<b>300 Purchased Professional and Technical Services</b>				
329 Professional Educational Services – Other	331,963.69	367,297.34	560.66	699,821.69
330 Other Professional Services	195.03	2,095.97		2,291.00
<b>Total Purchased Professional and Technical Services</b>	<b>\$332,158.72</b>	<b>\$369,393.31</b>	<b>\$560.66</b>	<b>\$702,112.69</b>
<b>400 Purchased Property Services</b>				
430 Repairs and Maintenance Services	87,682.88	42,840.72	6,479.00	137,002.60
440 Rentals		706.75		706.75
<b>Total Purchased Property Services</b>	<b>\$87,682.88</b>	<b>\$43,547.47</b>	<b>\$6,479.00</b>	<b>\$137,709.35</b>
<b>500 Other Purchased Services</b>				
510 Student Transportation Services			4,144.95	4,144.95
550 Printing and Binding	1,294.76	300.00		1,594.76
561 Tuition To Other School Districts Within the State		888.60		888.60
562 Tuition To Pennsylvania Charter Schools	19,453.22	133,192.50		152,645.72
580 Travel	2,087.40	235.25		2,322.65
<b>Total Other Purchased Services</b>	<b>\$22,835.38</b>	<b>\$134,616.35</b>	<b>\$4,144.95</b>	<b>\$161,596.68</b>
<b>600 Supplies</b>				
610 General Supplies	346,672.68	353,194.28	8,677.90	708,544.86
630 Food	1,941.68	8,737.44	887.81	11,566.93
640 Books and Periodicals	128,594.61	93,813.95		222,408.56
<b>Total Supplies</b>	<b>\$477,208.97</b>	<b>\$455,745.67</b>	<b>\$9,565.71</b>	<b>\$942,520.35</b>
<b>700 Property</b>				
752 Capital Equipment – Original and Additional	191,702.22	54,647.77		246,349.99
756 Capitalized Technology Equipment – Original	224,510.27	324,599.26		549,109.53
<b>Total Property</b>	<b>\$416,212.49</b>	<b>\$379,247.03</b>		<b>\$795,459.52</b>
<b>800 Other Objects</b>				
810 Dues and Fees	110.55	4,313.39		4,423.94
<b>Total Other Objects</b>	<b>\$110.55</b>	<b>\$4,313.39</b>		<b>\$4,423.94</b>
<b>Total 1100 Regular Programs – Elementary / Secondary</b>	<b>\$19,350,120.48</b>	<b>\$19,876,783.72</b>	<b>\$422,059.10</b>	<b>\$39,648,963.30</b>

**General Fund (10)**

**1110 Regular Programs**

	<u>Elementary</u>	<u>Secondary</u>	<u>Federal</u>	<u>Total</u>
<b>100 Personnel Services – Salaries</b>				
100 Personnel Services – Salaries	11,065,633.86	11,239,372.56		22,305,006.42
<b>Total Personnel Services – Salaries</b>	<b>\$11,065,633.86</b>	<b>\$11,239,372.56</b>		<b>\$22,305,006.42</b>
<b>200 Personnel Services – Employee Benefits</b>				
210 Group Insurance – Contracted Provider	1,858,999.06	2,069,241.29		3,928,240.35
220 Social Security Contributions	823,371.44	835,445.47		1,658,816.91
230 PSERS Retirement Contributions	3,713,768.48	3,736,714.61		7,450,483.09
250 Unemployment Compensation	5,016.99	5,016.98		10,033.97
260 Workers' Compensation	99,896.00	101,389.16		201,285.16
270 Group Insurance – Self-Insurance	447,225.66	502,740.43		949,966.09
<b>Total Personnel Services – Employee Benefits</b>	<b>\$6,948,277.63</b>	<b>\$7,250,547.94</b>		<b>\$14,198,825.57</b>
<b>300 Purchased Professional and Technical Services</b>				
329 Professional Educational Services – Other	331,963.69	367,297.34		699,261.03
330 Other Professional Services	195.03	2,095.97		2,291.00
<b>Total Purchased Professional and Technical Services</b>	<b>\$332,158.72</b>	<b>\$369,393.31</b>		<b>\$701,552.03</b>
<b>400 Purchased Property Services</b>				
430 Repairs and Maintenance Services	87,682.88	42,840.72		130,523.60
440 Rentals		706.75		706.75
<b>Total Purchased Property Services</b>	<b>\$87,682.88</b>	<b>\$43,547.47</b>		<b>\$131,230.35</b>
<b>500 Other Purchased Services</b>				
550 Printing and Binding	1,294.76	300.00		1,594.76
561 Tuition To Other School Districts Within the State		888.60		888.60
562 Tuition To Pennsylvania Charter Schools	19,453.22	133,192.50		152,645.72
580 Travel	2,087.40	235.25		2,322.65
<b>Total Other Purchased Services</b>	<b>\$22,835.38</b>	<b>\$134,616.35</b>		<b>\$157,451.73</b>
<b>600 Supplies</b>				
610 General Supplies	346,672.68	353,194.28		699,866.96
630 Food	1,941.68	8,737.44		10,679.12
640 Books and Periodicals	128,594.61	93,813.95		222,408.56
<b>Total Supplies</b>	<b>\$477,208.97</b>	<b>\$455,745.67</b>		<b>\$932,954.64</b>
<b>700 Property</b>				
752 Capital Equipment – Original and Additional	191,702.22	54,647.77		246,349.99
756 Capitalized Technology Equipment – Original	224,510.27	324,599.26		549,109.53
<b>Total Property</b>	<b>\$416,212.49</b>	<b>\$379,247.03</b>		<b>\$795,459.52</b>
<b>800 Other Objects</b>				
810 Dues and Fees	110.55	4,313.39		4,423.94
<b>Total Other Objects</b>	<b>\$110.55</b>	<b>\$4,313.39</b>		<b>\$4,423.94</b>
<b>Total 1110 Regular Programs</b>	<b>\$19,350,120.48</b>	<b>\$19,876,783.72</b>		<b>\$39,226,904.20</b>

**General Fund (10)**

	<u>Elementary</u>	<u>Secondary</u>	<u>Federal</u>	<u>Total</u>
<b>1190 Federally-Funded Regular Programs</b>				
<b>100 Personnel Services – Salaries</b>				
100 Personnel Services – Salaries			241,947.48	241,947.48
<b>Total Personnel Services – Salaries</b>			<b>\$241,947.48</b>	<b>\$241,947.48</b>
<b>200 Personnel Services – Employee Benefits</b>				
210 Group Insurance – Contracted Provider			47,374.57	47,374.57
220 Social Security Contributions			18,152.60	18,152.60
230 PSERS Retirement Contributions			80,753.58	80,753.58
260 Workers' Compensation			1,881.13	1,881.13
270 Group Insurance – Self-Insurance			11,199.42	11,199.42
<b>Total Personnel Services – Employee Benefits</b>			<b>\$159,361.30</b>	<b>\$159,361.30</b>
<b>300 Purchased Professional and Technical Services</b>				
329 Professional Educational Services – Other			560.66	560.66
<b>Total Purchased Professional and Technical Services</b>			<b>\$560.66</b>	<b>\$560.66</b>
<b>400 Purchased Property Services</b>				
430 Repairs and Maintenance Services			6,479.00	6,479.00
<b>Total Purchased Property Services</b>			<b>\$6,479.00</b>	<b>\$6,479.00</b>
<b>500 Other Purchased Services</b>				
510 Student Transportation Services			4,144.95	4,144.95
<b>Total Other Purchased Services</b>			<b>\$4,144.95</b>	<b>\$4,144.95</b>
<b>600 Supplies</b>				
610 General Supplies			8,677.90	8,677.90
630 Food			887.81	887.81
<b>Total Supplies</b>			<b>\$9,565.71</b>	<b>\$9,565.71</b>
<b>Total 1190 Federally-Funded Regular Programs</b>			<b>\$422,059.10</b>	<b>\$422,059.10</b>

**General Fund (10)**

**1200 Special Programs – Elementary / Secondary**

	<u>Elementary</u>	<u>Secondary</u>	<u>Federal</u>	<u>Total</u>
<b>100 Personnel Services – Salaries</b>				
100 Personnel Services – Salaries	2,766,757.81	2,334,548.84		5,101,306.65
<b>Total Personnel Services – Salaries</b>	<b>\$2,766,757.81</b>	<b>\$2,334,548.84</b>		<b>\$5,101,306.65</b>
<b>200 Personnel Services – Employee Benefits</b>				
210 Group Insurance – Contracted Provider	408,025.02	360,782.34		768,807.36
220 Social Security Contributions	200,711.65	172,456.51		373,168.16
230 PSERS Retirement Contributions	903,015.89	763,297.36		1,666,313.25
250 Unemployment Compensation	63.38	126.70		190.08
260 Workers' Compensation	24,902.73	21,027.03		45,929.76
270 Group Insurance – Self-Insurance	75,076.17	79,676.61		154,752.78
<b>Total Personnel Services – Employee Benefits</b>	<b>\$1,611,794.84</b>	<b>\$1,397,366.55</b>		<b>\$3,009,161.39</b>
<b>300 Purchased Professional and Technical Services</b>				
322 Professional Educational Services – Ius	259,915.41	201,543.89	316,221.00	777,680.30
330 Other Professional Services	720,704.16	405,133.13	68,370.00	1,194,207.29
340 Technical Services		1,679.25	3,168.00	4,847.25
390 Other Purchased Professional and Technical Services	200,743.37	51,842.54		252,585.91
<b>Total Purchased Professional and Technical Services</b>	<b>\$1,181,362.94</b>	<b>\$660,198.81</b>	<b>\$387,759.00</b>	<b>\$2,229,320.75</b>
<b>400 Purchased Property Services</b>				
430 Repairs and Maintenance Services	49.00	23,244.85		23,293.85
<b>Total Purchased Property Services</b>	<b>\$49.00</b>	<b>\$23,244.85</b>		<b>\$23,293.85</b>
<b>500 Other Purchased Services</b>				
530 Communications	16.96			16.96
561 Tuition To Other School Districts Within the State	3,995.08	79,516.02		83,511.10
562 Tuition To Pennsylvania Charter Schools	133,085.47	157,716.81		290,802.28
563 Tuition To Nonpublic Schools	1,624,033.63	2,956,758.96	24,080.00	4,604,872.59
567 Tuition To Approved Private Schools (APS) and PA Chartered Schools for the Deaf and Blind	171,069.22	171,069.22		342,138.44
580 Travel	35.57			35.57
<b>Total Other Purchased Services</b>	<b>\$1,932,235.93</b>	<b>\$3,365,061.01</b>	<b>\$24,080.00</b>	<b>\$5,321,376.94</b>
<b>600 Supplies</b>				
610 General Supplies	22,054.11	4,894.89		26,949.00
630 Food	155.84	447.39		603.23
640 Books and Periodicals	4,368.38	3,424.41		7,792.79
<b>Total Supplies</b>	<b>\$26,578.33</b>	<b>\$8,766.69</b>		<b>\$35,345.02</b>
<b>700 Property</b>				
752 Capital Equipment – Original and Additional	210.00	210.00		420.00
<b>Total Property</b>	<b>\$210.00</b>	<b>\$210.00</b>		<b>\$420.00</b>
<b>Total 1200 Special Programs – Elementary / Secondary</b>	<b>\$7,518,988.85</b>	<b>\$7,789,396.75</b>	<b>\$411,839.00</b>	<b>\$15,720,224.60</b>

General Fund (10)

1210 Life Skills Support

100 Personnel Services – Salaries

	<u>Elementary</u>	<u>Secondary</u>	<u>Federal</u>	<u>Total</u>
100 Personnel Services – Salaries	145,991.70	135,683.30		281,675.00
<b>Total Personnel Services – Salaries</b>	<b>\$145,991.70</b>	<b>\$135,683.30</b>		<b>\$281,675.00</b>

200 Personnel Services – Employee Benefits

210 Group Insurance – Contracted Provider	26,865.12	32,168.52		59,033.64
220 Social Security Contributions	10,898.49	10,080.66		20,979.15
230 PSERS Retirement Contributions	48,143.19	45,017.85		93,161.04
260 Workers' Compensation	1,313.87	1,221.04		2,534.91
270 Group Insurance – Self-Insurance	6,771.72	6,907.20		13,678.92
<b>Total Personnel Services – Employee Benefits</b>	<b>\$93,992.39</b>	<b>\$95,395.27</b>		<b>\$189,387.66</b>

300 Purchased Professional and Technical Services

322 Professional Educational Services – lus		2,153.54		2,153.54
330 Other Professional Services		14,614.75		14,614.75
340 Technical Services		129.25		129.25
<b>Total Purchased Professional and Technical Services</b>		<b>\$16,897.54</b>		<b>\$16,897.54</b>
<b>Total 1210 Life Skills Support</b>	<b>\$239,984.09</b>	<b>\$247,976.11</b>		<b>\$487,960.20</b>

**General Fund (10)**

**1220 Sensory Support**

	<u>Elementary</u>	<u>Secondary</u>	<u>Federal</u>	<u>Total</u>
<b>100 Personnel Services – Salaries</b>				
100 Personnel Services – Salaries	79,043.86			79,043.86
<b>Total Personnel Services – Salaries</b>	<b>\$79,043.86</b>			<b>\$79,043.86</b>
<b>200 Personnel Services – Employee Benefits</b>				
210 Group Insurance – Contracted Provider	16,506.41			16,506.41
220 Social Security Contributions	5,918.64			5,918.64
230 PSERS Retirement Contributions	25,981.49			25,981.49
260 Workers' Compensation	711.34			711.34
270 Group Insurance – Self-Insurance	3,133.82			3,133.82
<b>Total Personnel Services – Employee Benefits</b>	<b>\$52,251.70</b>			<b>\$52,251.70</b>
<b>300 Purchased Professional and Technical Services</b>				
322 Professional Educational Services – lus	100,396.31	20,598.89	231,474.61	352,469.81
330 Other Professional Services	170,950.55	127,149.01	32,291.98	330,391.54
340 Technical Services			3,168.00	3,168.00
<b>Total Purchased Professional and Technical Services</b>	<b>\$271,346.86</b>	<b>\$147,747.90</b>	<b>\$266,934.59</b>	<b>\$686,029.35</b>
<b>500 Other Purchased Services</b>				
561 Tuition To Other School Districts Within the State	1,795.08	11,670.75		13,465.83
<b>Total Other Purchased Services</b>	<b>\$1,795.08</b>	<b>\$11,670.75</b>		<b>\$13,465.83</b>
<b>600 Supplies</b>				
610 General Supplies	435.60			435.60
<b>Total Supplies</b>	<b>\$435.60</b>			<b>\$435.60</b>
<b>Total 1220 Sensory Support</b>	<b>\$404,873.10</b>	<b>\$159,418.65</b>	<b>\$266,934.59</b>	<b>\$831,226.34</b>

**General Fund (10)**

**1230 Emotional Support**

	<u>Elementary</u>	<u>Secondary</u>	<u>Federal</u>	<u>Total</u>
<b>100 Personnel Services – Salaries</b>				
100 Personnel Services – Salaries	67,525.69	222,116.61		289,642.30
<b>Total Personnel Services – Salaries</b>	<b>\$67,525.69</b>	<b>\$222,116.61</b>		<b>\$289,642.30</b>
<b>200 Personnel Services – Employee Benefits</b>				
210 Group Insurance – Contracted Provider	6,568.07	14,130.63		20,698.70
220 Social Security Contributions	5,107.45	16,867.65		21,975.10
230 PSERS Retirement Contributions	21,891.77	71,926.90		93,818.67
260 Workers' Compensation	607.79	1,998.96		2,606.75
270 Group Insurance – Self-Insurance	1,641.60	3,488.52		5,130.12
<b>Total Personnel Services – Employee Benefits</b>	<b>\$35,816.68</b>	<b>\$108,412.66</b>		<b>\$144,229.34</b>
<b>300 Purchased Professional and Technical Services</b>				
322 Professional Educational Services – lus	26,486.64	111,711.62	78,962.39	217,160.65
330 Other Professional Services	189,258.95	118,728.15		307,987.10
340 Technical Services		630.00		630.00
<b>Total Purchased Professional and Technical Services</b>	<b>\$215,745.59</b>	<b>\$231,069.77</b>	<b>\$78,962.39</b>	<b>\$525,777.75</b>
<b>500 Other Purchased Services</b>				
563 Tuition To Nonpublic Schools	833,659.27	1,993,184.19	24,080.00	2,850,923.46
<b>Total Other Purchased Services</b>	<b>\$833,659.27</b>	<b>\$1,993,184.19</b>	<b>\$24,080.00</b>	<b>\$2,850,923.46</b>
<b>Total 1230 Emotional Support</b>	<b>\$1,152,747.23</b>	<b>\$2,554,783.23</b>	<b>\$103,042.39</b>	<b>\$3,810,572.85</b>

**General Fund (10)**

**1240 Academic Support**

	<u>Elementary</u>	<u>Secondary</u>	<u>Federal</u>	<u>Total</u>
<b>100 Personnel Services – Salaries</b>				
100 Personnel Services – Salaries	2,474,196.56	1,976,454.53		4,450,651.09
<b>Total Personnel Services – Salaries</b>	<b>\$2,474,196.56</b>	<b>\$1,976,454.53</b>		<b>\$4,450,651.09</b>
<b>200 Personnel Services – Employee Benefits</b>				
210 Group Insurance – Contracted Provider	358,085.42	313,871.94		671,957.36
220 Social Security Contributions	178,787.07	145,485.95		324,273.02
230 PSERS Retirement Contributions	806,999.44	646,296.78		1,453,296.22
250 Unemployment Compensation	63.38	126.70		190.08
260 Workers' Compensation	22,269.73	17,804.38		40,074.11
270 Group Insurance – Self-Insurance	63,529.03	69,280.89		132,809.92
<b>Total Personnel Services – Employee Benefits</b>	<b>\$1,429,734.07</b>	<b>\$1,192,866.64</b>		<b>\$2,622,600.71</b>
<b>300 Purchased Professional and Technical Services</b>				
322 Professional Educational Services – lus	39,858.50	67,079.84	4,000.00	110,938.34
330 Other Professional Services	331,685.52	144,641.22	36,078.02	512,404.76
340 Technical Services		920.00		920.00
390 Other Purchased Professional and Technical Services	200,743.37	51,842.54		252,585.91
<b>Total Purchased Professional and Technical Services</b>	<b>\$572,287.39</b>	<b>\$264,483.60</b>	<b>\$40,078.02</b>	<b>\$876,849.01</b>
<b>400 Purchased Property Services</b>				
430 Repairs and Maintenance Services	49.00	23,244.85		23,293.85
<b>Total Purchased Property Services</b>	<b>\$49.00</b>	<b>\$23,244.85</b>		<b>\$23,293.85</b>
<b>500 Other Purchased Services</b>				
530 Communications	16.96			16.96
561 Tuition To Other School Districts Within the State	2,200.00	67,845.27		70,045.27
562 Tuition To Pennsylvania Charter Schools	133,085.47	157,716.81		290,802.28
563 Tuition To Nonpublic Schools	123,624.00	100,508.78		224,132.78
580 Travel	35.57			35.57
<b>Total Other Purchased Services</b>	<b>\$258,962.00</b>	<b>\$326,070.86</b>		<b>\$585,032.86</b>
<b>600 Supplies</b>				
610 General Supplies	21,618.51	4,894.89		26,513.40
630 Food	155.84	447.39		603.23
640 Books and Periodicals	4,368.38	3,424.41		7,792.79
<b>Total Supplies</b>	<b>\$26,142.73</b>	<b>\$8,766.69</b>		<b>\$34,909.42</b>
<b>700 Property</b>				
752 Capital Equipment – Original and Additional	210.00	210.00		420.00
<b>Total Property</b>	<b>\$210.00</b>	<b>\$210.00</b>		<b>\$420.00</b>
<b>Total 1240 Academic Support</b>	<b>\$4,761,581.75</b>	<b>\$3,792,097.17</b>	<b>\$40,078.02</b>	<b>\$8,593,756.94</b>

**General Fund (10)**

	<u>Elementary</u>	<u>Secondary</u>	<u>Federal</u>	<u>Total</u>
<b>1241 Learning Support – Public</b>				
<b>100 Personnel Services – Salaries</b>				
100 Personnel Services – Salaries	2,246,706.31	1,374,025.37		3,620,731.68
<b>Total Personnel Services – Salaries</b>	<b>\$2,246,706.31</b>	<b>\$1,374,025.37</b>		<b>\$3,620,731.68</b>
<b>200 Personnel Services – Employee Benefits</b>				
210 Group Insurance – Contracted Provider	309,282.41	206,399.17		515,681.58
220 Social Security Contributions	161,752.69	101,234.36		262,987.05
230 PSERS Retirement Contributions	730,949.43	447,370.30		1,178,319.73
250 Unemployment Compensation	63.38	126.70		190.08
260 Workers' Compensation	20,222.41	12,389.43		32,611.84
270 Group Insurance – Self-Insurance	50,487.93	41,245.95		91,733.88
<b>Total Personnel Services – Employee Benefits</b>	<b>\$1,272,758.25</b>	<b>\$808,765.91</b>		<b>\$2,081,524.16</b>
<b>300 Purchased Professional and Technical Services</b>				
322 Professional Educational Services – lus	39,858.50	67,079.84	4,000.00	110,938.34
330 Other Professional Services	331,685.52	144,641.22	36,078.02	512,404.76
340 Technical Services		920.00		920.00
390 Other Purchased Professional and Technical Services	200,743.37	51,842.54		252,585.91
<b>Total Purchased Professional and Technical Services</b>	<b>\$572,287.39</b>	<b>\$264,483.60</b>	<b>\$40,078.02</b>	<b>\$876,849.01</b>
<b>400 Purchased Property Services</b>				
430 Repairs and Maintenance Services	49.00	23,244.85		23,293.85
<b>Total Purchased Property Services</b>	<b>\$49.00</b>	<b>\$23,244.85</b>		<b>\$23,293.85</b>
<b>500 Other Purchased Services</b>				
530 Communications	16.96			16.96
561 Tuition To Other School Districts Within the State	2,200.00	67,845.27		70,045.27
562 Tuition To Pennsylvania Charter Schools	133,085.47	157,716.81		290,802.28
563 Tuition To Nonpublic Schools	123,624.00	100,508.78		224,132.78
<b>Total Other Purchased Services</b>	<b>\$258,926.43</b>	<b>\$326,070.86</b>		<b>\$584,997.29</b>
<b>600 Supplies</b>				
610 General Supplies	20,311.16	4,465.29		24,776.45
630 Food	155.84	447.39		603.23
640 Books and Periodicals	3,871.66	3,424.41		7,296.07
<b>Total Supplies</b>	<b>\$24,338.66</b>	<b>\$8,337.09</b>		<b>\$32,675.75</b>
<b>700 Property</b>				
752 Capital Equipment – Original and Additional	210.00	210.00		420.00
<b>Total Property</b>	<b>\$210.00</b>	<b>\$210.00</b>		<b>\$420.00</b>
<b>Total 1241 Learning Support – Public</b>	<b>\$4,375,276.04</b>	<b>\$2,805,137.68</b>	<b>\$40,078.02</b>	<b>\$7,220,491.74</b>

**General Fund (10)**

**1243 Gifted Support**

	<u>Elementary</u>	<u>Secondary</u>	<u>Federal</u>	<u>Total</u>
<b>100 Personnel Services – Salaries</b>				
100 Personnel Services – Salaries	227,490.25	602,429.16		829,919.41
<b>Total Personnel Services – Salaries</b>	<b>\$227,490.25</b>	<b>\$602,429.16</b>		<b>\$829,919.41</b>
<b>200 Personnel Services – Employee Benefits</b>				
210 Group Insurance – Contracted Provider	48,803.01	107,472.77		156,275.78
220 Social Security Contributions	17,034.38	44,251.59		61,285.97
230 PSERS Retirement Contributions	76,050.01	198,926.48		274,976.49
260 Workers' Compensation	2,047.32	5,414.95		7,462.27
270 Group Insurance – Self-Insurance	13,041.10	28,034.94		41,076.04
<b>Total Personnel Services – Employee Benefits</b>	<b>\$156,975.82</b>	<b>\$384,100.73</b>		<b>\$541,076.55</b>
<b>500 Other Purchased Services</b>				
580 Travel	35.57			35.57
<b>Total Other Purchased Services</b>	<b>\$35.57</b>			<b>\$35.57</b>
<b>600 Supplies</b>				
610 General Supplies	1,307.35	429.60		1,736.95
640 Books and Periodicals	496.72			496.72
<b>Total Supplies</b>	<b>\$1,804.07</b>	<b>\$429.60</b>		<b>\$2,233.67</b>
<b>Total 1243 Gifted Support</b>	<b>\$386,305.71</b>	<b>\$986,959.49</b>		<b>\$1,373,265.20</b>

**General Fund (10)**

	<u>Elementary</u>	<u>Secondary</u>	<u>Federal</u>	<u>Total</u>
<b>1270 Multi-Handicapped Support</b>				
<b>100 Personnel Services – Salaries</b>				
100 Personnel Services – Salaries		294.40		294.40
<b>Total Personnel Services – Salaries</b>		<b>\$294.40</b>		<b>\$294.40</b>
<b>200 Personnel Services – Employee Benefits</b>				
210 Group Insurance – Contracted Provider		611.25		611.25
220 Social Security Contributions		22.25		22.25
230 PSERS Retirement Contributions		55.83		55.83
260 Workers' Compensation		2.65		2.65
<b>Total Personnel Services – Employee Benefits</b>		<b>\$691.98</b>		<b>\$691.98</b>
<b>300 Purchased Professional and Technical Services</b>				
322 Professional Educational Services – Ius	11,325.00			11,325.00
330 Other Professional Services	28,809.14			28,809.14
<b>Total Purchased Professional and Technical Services</b>	<b>\$40,134.14</b>			<b>\$40,134.14</b>
<b>500 Other Purchased Services</b>				
563 Tuition To Nonpublic Schools	666,750.36	863,065.99		1,529,816.35
<b>Total Other Purchased Services</b>	<b>\$666,750.36</b>	<b>\$863,065.99</b>		<b>\$1,529,816.35</b>
<b>Total 1270 Multi-Handicapped Support</b>	<b>\$706,884.50</b>	<b>\$864,052.37</b>		<b>\$1,570,936.87</b>

General Fund (10)

1280 Early Intervention Support

300 Purchased Professional and Technical Services

322 Professional Educational Services – lus

**Total Purchased Professional and Technical Services**

**Total 1280 Early Intervention Support**

	<u>Elementary</u>	<u>Secondary</u>	<u>Federal</u>	<u>Total</u>
	81,848.96		1,784.00	83,632.96
	<b>\$81,848.96</b>		<b>\$1,784.00</b>	<b>\$83,632.96</b>
	<b>\$81,848.96</b>		<b>\$1,784.00</b>	<b>\$83,632.96</b>

General Fund (10)

1290 Special Programs - Other Support

500 Other Purchased Services

567 Tuition To Approved Private Schools (APS) and PA Chartered Schools for the Deaf and Blind

Total Other Purchased Services

Total 1290 Special Programs - Other Support

	<u>Elementary</u>	<u>Secondary</u>	<u>Federal</u>	<u>Total</u>
567 Tuition To Approved Private Schools (APS) and PA Chartered Schools for the Deaf and Blind	171,069.22	171,069.22		342,138.44
<b>Total Other Purchased Services</b>	<b>\$171,069.22</b>	<b>\$171,069.22</b>		<b>\$342,138.44</b>
<b>Total 1290 Special Programs - Other Support</b>	<b>\$171,069.22</b>	<b>\$171,069.22</b>		<b>\$342,138.44</b>

LEA : 125237603 Radnor Township SD

Printed 2/19/2020 9:53:09 AM

General Fund (10)

1300 Vocational Education

500 Other Purchased Services

564 Tuition To Career and Technology Centers

Total Other Purchased Services

Total 1300 Vocational Education

Elementary

Secondary

Federal

Total

228,753.70

228,753.70

\$228,753.70

\$228,753.70

\$228,753.70

\$228,753.70

**General Fund (10)**

	<u>Elementary</u>	<u>Secondary</u>	<u>Federal</u>	<u>Total</u>
<b>1400 Other Instructional Programs – Elementary / Secondary</b>				
<b>100 Personnel Services – Salaries</b>				
100 Personnel Services – Salaries	1,282.50	1,215.00		2,497.50
<b>Total Personnel Services – Salaries</b>	<b>\$1,282.50</b>	<b>\$1,215.00</b>		<b>\$2,497.50</b>
<b>200 Personnel Services – Employee Benefits</b>				
220 Social Security Contributions	91.61	91.15		182.76
230 PSERS Retirement Contributions	428.74	406.18		834.92
260 Workers' Compensation	11.55	10.94		22.49
<b>Total Personnel Services – Employee Benefits</b>	<b>\$531.90</b>	<b>\$508.27</b>		<b>\$1,040.17</b>
<b>Total 1400 Other Instructional Programs – Elementary / Secondary</b>	<b>\$1,814.40</b>	<b>\$1,723.27</b>		<b>\$3,537.67</b>

**General Fund (10)**

	<u>Elementary</u>	<u>Secondary</u>	<u>Federal</u>	<u>Total</u>
<b>1430 Homebound Instruction</b>				
<b>100 Personnel Services – Salaries</b>				
100 Personnel Services – Salaries	1,282.50	1,215.00		2,497.50
<b>Total Personnel Services – Salaries</b>	<b>\$1,282.50</b>	<b>\$1,215.00</b>		<b>\$2,497.50</b>
<b>200 Personnel Services – Employee Benefits</b>				
220 Social Security Contributions	91.61	91.15		182.76
230 PSERS Retirement Contributions	428.74	406.18		834.92
260 Workers’ Compensation	11.55	10.94		22.49
<b>Total Personnel Services – Employee Benefits</b>	<b>\$531.90</b>	<b>\$508.27</b>		<b>\$1,040.17</b>
<b>Total 1430 Homebound Instruction</b>	<b>\$1,814.40</b>	<b>\$1,723.27</b>		<b>\$3,537.67</b>

General Fund (10)

1600 Adult Education Programs

Elementary

Secondary

Federal

Total

500 Other Purchased Services

566 Tuition To Institutions of Higher Education and Technical Institutes

1,148,553.00

**Total Other Purchased Services**

**\$1,148,553.00**

**Total 1600 Adult Education Programs**

**\$1,148,553.00**

**General Fund (10)**

**2000 Support Services**

**Total**

**100 Personnel Services – Salaries**

100 Personnel Services – Salaries 14,555,368.81

**Total Personnel Services – Salaries \$14,555,368.81**

**200 Personnel Services – Employee Benefits**

210 Group Insurance – Contracted Provider 3,122,604.66

220 Social Security Contributions 1,068,071.94

230 PSERS Retirement Contributions 4,763,541.02

240 Tuition Reimbursement 101,563.76

250 Unemployment Compensation 21,313.13

260 Workers' Compensation 132,646.68

270 Group Insurance – Self-Insurance 766,432.58

291 Other Retirement Plans 1,450.00

292 Health Savings Accounts 266,167.23

**Total Personnel Services – Employee Benefits \$10,243,791.00**

**300 Purchased Professional and Technical Services**

322 Professional Educational Services – Ius 50,298.00

329 Professional Educational Services – Other 231,439.67

330 Other Professional Services 1,355,984.50

340 Technical Services 321,422.11

360 Employee Training and Development Services 47,762.67

**Total Purchased Professional and Technical Services \$2,006,906.95**

**400 Purchased Property Services**

410 Cleaning Services 290,788.09

420 Utility Services 120,269.08

430 Repairs and Maintenance Services 784,427.89

440 Rentals 212,367.26

460 Extermination Services 9,638.31

**Total Purchased Property Services \$1,417,490.63**

**500 Other Purchased Services**

513 Contracted Carriers 21,752.13

515 Public Carriers 4,686.00

516 Student Transportation Services From the IU 15,629.37

520 Insurance – General 116,069.00

522 Automotive Liability Insurance 45,345.00

523 General Property and Liability Insurance 126,468.50

530 Communications 221,438.34

541 Advertising Related to Federal Grant Awards 6,637.99

550 Printing and Binding 12,147.26

580 Travel 78,347.02

595 IU Payments By Withholding 80,986.58

599 Other Miscellaneous Purchased Services 36,000.00

**Total Other Purchased Services \$765,507.19**

**600 Supplies**

610 General Supplies 858,366.42

LEA : 125237603 Radnor Township SD

Printed 2/19/2020 9:53:17 AM

**General Fund (10)**

**2000 Support Services**

**Total**

<b>600 <u>Supplies</u></b>	
620 Energy	1,001,335.40
630 Food	30,587.53
640 Books and Periodicals	82,275.76
<b>Total Supplies</b>	<b>\$1,972,565.11</b>
<b>700 <u>Property</u></b>	
752 Capital Equipment – Original and Additional	10,653.26
756 Capitalized Technology Equipment – Original	250,312.33
762 Capitalized Equipment - Replacement	79,002.20
766 Capitalized Technology Equipment – Replacement	39,318.00
<b>Total Property</b>	<b>\$379,285.79</b>
<b>800 <u>Other Objects</u></b>	
810 Dues and Fees	100,346.54
<b>Total Other Objects</b>	<b>\$100,346.54</b>
<b>Total 2000 Support Services</b>	<b>\$31,441,262.02</b>

**General Fund (10)**

	<u>Elementary</u>	<u>Secondary</u>	<u>Federal</u>	<u>Total</u>
<b>2100 Support Services – Students</b>				
<b>100 Personnel Services – Salaries</b>				
100 Personnel Services – Salaries	802,509.75	1,328,662.12		2,335,669.55
<b>Total Personnel Services – Salaries</b>	<b>\$802,509.75</b>	<b>\$1,328,662.12</b>		<b>\$2,335,669.55</b>
<b>200 Personnel Services – Employee Benefits</b>				
210 Group Insurance – Contracted Provider	145,793.05	211,832.50		379,822.33
220 Social Security Contributions	59,474.75	98,382.38		173,493.51
230 PSERS Retirement Contributions	265,553.99	437,426.33		770,341.19
260 Workers' Compensation	7,222.84	11,933.88		20,997.12
270 Group Insurance – Self-Insurance	35,488.07	55,753.85		96,855.76
292 Health Savings Accounts	4,540.61	4,358.24		10,381.09
<b>Total Personnel Services – Employee Benefits</b>	<b>\$518,073.31</b>	<b>\$819,687.18</b>		<b>\$1,451,891.00</b>
<b>300 Purchased Professional and Technical Services</b>				
330 Other Professional Services	72,191.07	126,519.95	187,517.00	388,953.12
<b>Total Purchased Professional and Technical Services</b>	<b>\$72,191.07</b>	<b>\$126,519.95</b>	<b>\$187,517.00</b>	<b>\$388,953.12</b>
<b>500 Other Purchased Services</b>				
580 Travel	2,285.16	1,430.08		5,552.58
<b>Total Other Purchased Services</b>	<b>\$2,285.16</b>	<b>\$1,430.08</b>		<b>\$5,552.58</b>
<b>600 Supplies</b>				
610 General Supplies	11,111.47	13,698.70		24,810.17
630 Food	703.82	906.89		1,610.71
640 Books and Periodicals	848.06	3,240.03		4,088.09
<b>Total Supplies</b>	<b>\$12,663.35</b>	<b>\$17,845.62</b>		<b>\$30,508.97</b>
<b>700 Property</b>				
752 Capital Equipment – Original and Additional	839.99	839.97		1,679.96
756 Capitalized Technology Equipment – Original		1,250.00		1,250.00
<b>Total Property</b>	<b>\$839.99</b>	<b>\$2,089.97</b>		<b>\$2,929.96</b>
<b>800 Other Objects</b>				
810 Dues and Fees	827.50	2,227.50		3,330.00
<b>Total Other Objects</b>	<b>\$827.50</b>	<b>\$2,227.50</b>		<b>\$3,330.00</b>
<b>Total 2100 Support Services – Students</b>	<b>\$1,409,390.13</b>	<b>\$2,298,462.42</b>	<b>\$187,517.00</b>	<b>\$4,218,835.18</b>

**General Fund (10)**

**2110 Supervision of Student Services**

	<u>Elementary</u>	<u>Secondary</u>	<u>Federal</u>	<u>Total</u>
<b>100 Personnel Services – Salaries</b>				
100 Personnel Services – Salaries	192,275.18	187,474.97		379,750.15
<b>Total Personnel Services – Salaries</b>	<b>\$192,275.18</b>	<b>\$187,474.97</b>		<b>\$379,750.15</b>
<b>200 Personnel Services – Employee Benefits</b>				
210 Group Insurance – Contracted Provider	37,397.94	37,387.28		74,785.22
220 Social Security Contributions	14,272.55	13,889.62		28,162.17
230 PSERS Retirement Contributions	63,306.71	61,619.00		124,925.71
260 Workers' Compensation	1,732.84	1,687.19		3,420.03
270 Group Insurance – Self-Insurance	9,142.16	9,275.35		18,417.51
292 Health Savings Accounts	4,540.61	4,358.24		8,898.85
<b>Total Personnel Services – Employee Benefits</b>	<b>\$130,392.81</b>	<b>\$128,216.68</b>		<b>\$258,609.49</b>
<b>300 Purchased Professional and Technical Services</b>				
330 Other Professional Services	45,965.07	95,383.57	187,517.00	328,865.64
<b>Total Purchased Professional and Technical Services</b>	<b>\$45,965.07</b>	<b>\$95,383.57</b>	<b>\$187,517.00</b>	<b>\$328,865.64</b>
<b>500 Other Purchased Services</b>				
580 Travel	1,570.98	1,430.08		3,001.06
<b>Total Other Purchased Services</b>	<b>\$1,570.98</b>	<b>\$1,430.08</b>		<b>\$3,001.06</b>
<b>600 Supplies</b>				
610 General Supplies	804.87	508.83		1,313.70
630 Food	452.14	408.06		860.20
640 Books and Periodicals	419.10	646.03		1,065.13
<b>Total Supplies</b>	<b>\$1,676.11</b>	<b>\$1,562.92</b>		<b>\$3,239.03</b>
<b>700 Property</b>				
752 Capital Equipment – Original and Additional	839.99	839.97		1,679.96
<b>Total Property</b>	<b>\$839.99</b>	<b>\$839.97</b>		<b>\$1,679.96</b>
<b>800 Other Objects</b>				
810 Dues and Fees	827.50	957.50		1,785.00
<b>Total Other Objects</b>	<b>\$827.50</b>	<b>\$957.50</b>		<b>\$1,785.00</b>
<b>Total 2110 Supervision of Student Services</b>	<b>\$373,547.64</b>	<b>\$415,865.69</b>	<b>\$187,517.00</b>	<b>\$976,930.33</b>

**General Fund (10)**

	<u>Elementary</u>	<u>Secondary</u>	<u>Federal</u>	<u>Total</u>
<b>2111 Supervision of Student Services – Head of Component</b>				
<b>100 Personnel Services – Salaries</b>				
100 Personnel Services – Salaries	138,816.50	138,816.29		277,632.79
<b>Total Personnel Services – Salaries</b>	<b>\$138,816.50</b>	<b>\$138,816.29</b>		<b>\$277,632.79</b>
<b>200 Personnel Services – Employee Benefits</b>				
210 Group Insurance – Contracted Provider	30,137.88	30,127.36		60,265.24
220 Social Security Contributions	10,215.42	10,214.35		20,429.77
230 PSERS Retirement Contributions	45,352.64	45,352.50		90,705.14
260 Workers' Compensation	1,249.43	1,249.30		2,498.73
270 Group Insurance – Self-Insurance	7,272.82	7,270.06		14,542.88
292 Health Savings Accounts	2,647.45	2,647.26		5,294.71
<b>Total Personnel Services – Employee Benefits</b>	<b>\$96,875.64</b>	<b>\$96,860.83</b>		<b>\$193,736.47</b>
<b>Total 2111 Supervision of Student Services – Head of Component</b>	<b>\$235,692.14</b>	<b>\$235,677.12</b>		<b>\$471,369.26</b>

**General Fund (10)**

**2119 Supervision of Student Services – All Other Supervision**

	<u>Elementary</u>	<u>Secondary</u>	<u>Federal</u>	<u>Total</u>
<b>100 Personnel Services – Salaries</b>				
100 Personnel Services – Salaries	53,458.68	48,658.68		102,117.36
<b>Total Personnel Services – Salaries</b>	<b>\$53,458.68</b>	<b>\$48,658.68</b>		<b>\$102,117.36</b>
<b>200 Personnel Services – Employee Benefits</b>				
210 Group Insurance – Contracted Provider	7,260.06	7,259.92		14,519.98
220 Social Security Contributions	4,057.13	3,675.27		7,732.40
230 PSERS Retirement Contributions	17,954.07	16,266.50		34,220.57
260 Workers' Compensation	483.41	437.89		921.30
270 Group Insurance – Self-Insurance	1,869.34	2,005.29		3,874.63
292 Health Savings Accounts	1,893.16	1,710.98		3,604.14
<b>Total Personnel Services – Employee Benefits</b>	<b>\$33,517.17</b>	<b>\$31,355.85</b>		<b>\$64,873.02</b>
<b>300 Purchased Professional and Technical Services</b>				
330 Other Professional Services	45,965.07	95,383.57	187,517.00	328,865.64
<b>Total Purchased Professional and Technical Services</b>	<b>\$45,965.07</b>	<b>\$95,383.57</b>	<b>\$187,517.00</b>	<b>\$328,865.64</b>
<b>500 Other Purchased Services</b>				
580 Travel	1,570.98	1,430.08		3,001.06
<b>Total Other Purchased Services</b>	<b>\$1,570.98</b>	<b>\$1,430.08</b>		<b>\$3,001.06</b>
<b>600 Supplies</b>				
610 General Supplies	804.87	508.83		1,313.70
630 Food	452.14	408.06		860.20
640 Books and Periodicals	419.10	646.03		1,065.13
<b>Total Supplies</b>	<b>\$1,676.11</b>	<b>\$1,562.92</b>		<b>\$3,239.03</b>
<b>700 Property</b>				
752 Capital Equipment – Original and Additional	839.99	839.97		1,679.96
<b>Total Property</b>	<b>\$839.99</b>	<b>\$839.97</b>		<b>\$1,679.96</b>
<b>800 Other Objects</b>				
810 Dues and Fees	827.50	957.50		1,785.00
<b>Total Other Objects</b>	<b>\$827.50</b>	<b>\$957.50</b>		<b>\$1,785.00</b>
<b>Total 2119 Supervision of Student Services – All Other Supervision</b>	<b>\$137,855.50</b>	<b>\$180,188.57</b>	<b>\$187,517.00</b>	<b>\$505,561.07</b>

**General Fund (10)**

	<u>Elementary</u>	<u>Secondary</u>	<u>Federal</u>	<u>Total</u>
<b>2120 Guidance Services</b>				
<b>100 Personnel Services – Salaries</b>				
100 Personnel Services – Salaries	283,681.80	750,480.48		1,034,162.28
<b>Total Personnel Services – Salaries</b>	<b>\$283,681.80</b>	<b>\$750,480.48</b>		<b>\$1,034,162.28</b>
<b>200 Personnel Services – Employee Benefits</b>				
210 Group Insurance – Contracted Provider	55,821.23	121,699.28		177,520.51
220 Social Security Contributions	21,315.46	55,675.29		76,990.75
230 PSERS Retirement Contributions	94,467.90	247,450.79		341,918.69
260 Workers' Compensation	2,553.16	6,754.02		9,307.18
270 Group Insurance – Self-Insurance	12,942.62	33,075.71		46,018.33
<b>Total Personnel Services – Employee Benefits</b>	<b>\$187,100.37</b>	<b>\$464,655.09</b>		<b>\$651,755.46</b>
<b>300 Purchased Professional and Technical Services</b>				
330 Other Professional Services	8,791.00	8,791.00		17,582.00
<b>Total Purchased Professional and Technical Services</b>	<b>\$8,791.00</b>	<b>\$8,791.00</b>		<b>\$17,582.00</b>
<b>600 Supplies</b>				
610 General Supplies	1,050.80	3,000.28		4,051.08
630 Food	251.68	498.83		750.51
640 Books and Periodicals	428.96	2,594.00		3,022.96
<b>Total Supplies</b>	<b>\$1,731.44</b>	<b>\$6,093.11</b>		<b>\$7,824.55</b>
<b>800 Other Objects</b>				
810 Dues and Fees		1,270.00		1,270.00
<b>Total Other Objects</b>		<b>\$1,270.00</b>		<b>\$1,270.00</b>
<b>Total 2120 Guidance Services</b>	<b>\$481,304.61</b>	<b>\$1,231,289.68</b>		<b>\$1,712,594.29</b>

**General Fund (10)**

	<u>Elementary</u>	<u>Secondary</u>	<u>Federal</u>	<u>Total</u>
<b>2140 Psychological Services</b>				
<b>100 Personnel Services – Salaries</b>				
100 Personnel Services – Salaries	326,552.77	390,706.67		717,259.44
<b>Total Personnel Services – Salaries</b>	<b>\$326,552.77</b>	<b>\$390,706.67</b>		<b>\$717,259.44</b>
<b>200 Personnel Services – Employee Benefits</b>				
210 Group Insurance – Contracted Provider	52,573.88	52,745.94		105,319.82
220 Social Security Contributions	23,886.74	28,817.47		52,704.21
230 PSERS Retirement Contributions	107,779.38	128,356.54		236,135.92
260 Workers' Compensation	2,936.84	3,492.67		6,429.51
270 Group Insurance – Self-Insurance	13,403.29	13,402.79		26,806.08
<b>Total Personnel Services – Employee Benefits</b>	<b>\$200,580.13</b>	<b>\$226,815.41</b>		<b>\$427,395.54</b>
<b>300 Purchased Professional and Technical Services</b>				
330 Other Professional Services	17,435.00	22,345.38		39,780.38
<b>Total Purchased Professional and Technical Services</b>	<b>\$17,435.00</b>	<b>\$22,345.38</b>		<b>\$39,780.38</b>
<b>500 Other Purchased Services</b>				
580 Travel	714.18			714.18
<b>Total Other Purchased Services</b>	<b>\$714.18</b>			<b>\$714.18</b>
<b>600 Supplies</b>				
610 General Supplies	9,255.80	10,189.59		19,445.39
<b>Total Supplies</b>	<b>\$9,255.80</b>	<b>\$10,189.59</b>		<b>\$19,445.39</b>
<b>700 Property</b>				
756 Capitalized Technology Equipment – Original		1,250.00		1,250.00
<b>Total Property</b>		<b>\$1,250.00</b>		<b>\$1,250.00</b>
<b>Total 2140 Psychological Services</b>	<b>\$554,537.88</b>	<b>\$651,307.05</b>		<b>\$1,205,844.93</b>

**General Fund (10)**

	<u>Elementary</u>	<u>Secondary</u>	<u>Federal</u>	<u>Total</u>
<b>2160 Social Work Services</b>				
<b>100 Personnel Services – Salaries</b>				
100 Personnel Services – Salaries				145,969.48
<b>Total Personnel Services – Salaries</b>				<b>\$145,969.48</b>
<b>200 Personnel Services – Employee Benefits</b>				
210 Group Insurance – Contracted Provider				20,525.54
220 Social Security Contributions				10,953.65
230 PSERS Retirement Contributions				47,794.81
260 Workers' Compensation				1,313.74
270 Group Insurance – Self-Insurance				5,130.12
<b>Total Personnel Services – Employee Benefits</b>				<b>\$85,717.86</b>
<b>300 Purchased Professional and Technical Services</b>				
330 Other Professional Services				80.00
<b>Total Purchased Professional and Technical Services</b>				<b>\$80.00</b>
<b>500 Other Purchased Services</b>				
580 Travel				839.13
<b>Total Other Purchased Services</b>				<b>\$839.13</b>
<b>Total 2160 Social Work Services</b>				<b>\$232,606.47</b>

General Fund (10)

2170 Student Accounting Services

Elementary                      Secondary                      Federal                      Total

100 Personnel Services – Salaries

100 Personnel Services – Salaries 58,528.20

**Total Personnel Services – Salaries \$58,528.20**

200 Personnel Services – Employee Benefits

210 Group Insurance – Contracted Provider 1,671.24

220 Social Security Contributions 4,682.73

230 PSERS Retirement Contributions 19,566.06

260 Workers' Compensation 526.66

270 Group Insurance – Self-Insurance 483.72

292 Health Savings Accounts 1,482.24

**Total Personnel Services – Employee Benefits \$28,412.65**

300 Purchased Professional and Technical Services

330 Other Professional Services 2,645.10

**Total Purchased Professional and Technical Services \$2,645.10**

500 Other Purchased Services

580 Travel 998.21

**Total Other Purchased Services \$998.21**

800 Other Objects

810 Dues and Fees 275.00

**Total Other Objects \$275.00**

**Total 2170 Student Accounting Services \$90,859.16**

**General Fund (10)**

**2200 Support Services – Instructional Staff**

	<u>Elementary</u>	<u>Secondary</u>	<u>Federal</u>	<u>Total</u>
<b>100 Personnel Services – Salaries</b>				
100 Personnel Services – Salaries	1,377,211.83	777,878.74		2,155,090.57
<b>Total Personnel Services – Salaries</b>	<b>\$1,377,211.83</b>	<b>\$777,878.74</b>		<b>\$2,155,090.57</b>
<b>200 Personnel Services – Employee Benefits</b>				
210 Group Insurance – Contracted Provider	295,751.17	117,194.89		412,946.06
220 Social Security Contributions	101,849.00	57,166.37		159,015.37
230 PSERS Retirement Contributions	437,529.33	256,019.90		693,549.23
240 Tuition Reimbursement	34,394.80	48,097.16		82,491.96
250 Unemployment Compensation	738.94			738.94
260 Workers' Compensation	13,613.82	7,000.74		20,614.56
270 Group Insurance – Self-Insurance	74,263.70	31,328.11		105,591.81
292 Health Savings Accounts	17,667.39	9,203.15		26,870.54
<b>Total Personnel Services – Employee Benefits</b>	<b>\$975,808.15</b>	<b>\$526,010.32</b>		<b>\$1,501,818.47</b>
<b>300 Purchased Professional and Technical Services</b>				
322 Professional Educational Services – Ius			50,298.00	50,298.00
329 Professional Educational Services – Other	229,229.67	1,670.00		230,899.67
330 Other Professional Services	79,132.55	39,985.18		119,117.73
340 Technical Services	425.00			425.00
360 Employee Training and Development Services	19,427.77	28,334.90		47,762.67
<b>Total Purchased Professional and Technical Services</b>	<b>\$328,214.99</b>	<b>\$69,990.08</b>	<b>\$50,298.00</b>	<b>\$448,503.07</b>
<b>400 Purchased Property Services</b>				
430 Repairs and Maintenance Services	13,914.05	47,820.66		61,734.71
<b>Total Purchased Property Services</b>	<b>\$13,914.05</b>	<b>\$47,820.66</b>		<b>\$61,734.71</b>
<b>500 Other Purchased Services</b>				
530 Communications	78.33	78.33		156.66
580 Travel	21,179.33	25,802.90		46,982.23
<b>Total Other Purchased Services</b>	<b>\$21,257.66</b>	<b>\$25,881.23</b>		<b>\$47,138.89</b>
<b>600 Supplies</b>				
610 General Supplies	9,570.86	3,373.12		12,943.98
630 Food	4,134.43	3,157.16		7,291.59
640 Books and Periodicals	33,459.70	40,455.85		73,915.55
<b>Total Supplies</b>	<b>\$47,164.99</b>	<b>\$46,986.13</b>		<b>\$94,151.12</b>
<b>800 Other Objects</b>				
810 Dues and Fees	1,292.00	1,309.00		2,601.00
<b>Total Other Objects</b>	<b>\$1,292.00</b>	<b>\$1,309.00</b>		<b>\$2,601.00</b>
<b>Total 2200 Support Services – Instructional Staff</b>	<b>\$2,764,863.67</b>	<b>\$1,495,876.16</b>	<b>\$50,298.00</b>	<b>\$4,311,037.83</b>

**General Fund (10)**

	<u>Elementary</u>	<u>Secondary</u>	<u>Federal</u>	<u>Total</u>
<b>2220 Technology Support Services</b>				
<b>100 Personnel Services – Salaries</b>				
100 Personnel Services – Salaries	197,101.06	151,460.20		348,561.26
<b>Total Personnel Services – Salaries</b>	<b>\$197,101.06</b>	<b>\$151,460.20</b>		<b>\$348,561.26</b>
<b>200 Personnel Services – Employee Benefits</b>				
210 Group Insurance – Contracted Provider	65,443.20	15,876.48		81,319.68
220 Social Security Contributions	14,554.77	11,480.99		26,035.76
230 PSERS Retirement Contributions	61,586.02	49,412.67		110,998.69
260 Workers' Compensation	1,773.66	1,363.25		3,136.91
270 Group Insurance – Self-Insurance	15,098.16	4,431.81		19,529.97
<b>Total Personnel Services – Employee Benefits</b>	<b>\$158,455.81</b>	<b>\$82,565.20</b>		<b>\$241,021.01</b>
<b>300 Purchased Professional and Technical Services</b>				
330 Other Professional Services	40,397.55	39,985.18		80,382.73
340 Technical Services	425.00			425.00
<b>Total Purchased Professional and Technical Services</b>	<b>\$40,822.55</b>	<b>\$39,985.18</b>		<b>\$80,807.73</b>
<b>500 Other Purchased Services</b>				
580 Travel	62.50	116.46		178.96
<b>Total Other Purchased Services</b>	<b>\$62.50</b>	<b>\$116.46</b>		<b>\$178.96</b>
<b>600 Supplies</b>				
610 General Supplies		105.56		105.56
<b>Total Supplies</b>		<b>\$105.56</b>		<b>\$105.56</b>
<b>Total 2220 Technology Support Services</b>	<b>\$396,441.92</b>	<b>\$274,232.60</b>		<b>\$670,674.52</b>

**General Fund (10)**

	<u>Elementary</u>	<u>Secondary</u>	<u>Federal</u>	<u>Total</u>
<b>2250 School Library Services</b>				
<b>100 Personnel Services – Salaries</b>				
100 Personnel Services – Salaries	349,241.72	141,821.44		491,063.16
<b>Total Personnel Services – Salaries</b>	<b>\$349,241.72</b>	<b>\$141,821.44</b>		<b>\$491,063.16</b>
<b>200 Personnel Services – Employee Benefits</b>				
210 Group Insurance – Contracted Provider	117,124.52	32,857.47		149,981.99
220 Social Security Contributions	25,211.99	10,575.72		35,787.71
230 PSERS Retirement Contributions	116,153.99	45,816.30		161,970.29
260 Workers' Compensation	3,142.68	1,276.48		4,419.16
270 Group Insurance – Self-Insurance	28,172.16	7,352.30		35,524.46
<b>Total Personnel Services – Employee Benefits</b>	<b>\$289,805.34</b>	<b>\$97,878.27</b>		<b>\$387,683.61</b>
<b>400 Purchased Property Services</b>				
430 Repairs and Maintenance Services	1,986.06	35,892.66		37,878.72
<b>Total Purchased Property Services</b>	<b>\$1,986.06</b>	<b>\$35,892.66</b>		<b>\$37,878.72</b>
<b>500 Other Purchased Services</b>				
580 Travel	87.99			87.99
<b>Total Other Purchased Services</b>	<b>\$87.99</b>			<b>\$87.99</b>
<b>600 Supplies</b>				
610 General Supplies	3,222.71	1,930.27		5,152.98
640 Books and Periodicals	28,961.76	38,768.66		67,730.42
<b>Total Supplies</b>	<b>\$32,184.47</b>	<b>\$40,698.93</b>		<b>\$72,883.40</b>
<b>800 Other Objects</b>				
810 Dues and Fees		60.00		60.00
<b>Total Other Objects</b>		<b>\$60.00</b>		<b>\$60.00</b>
<b>Total 2250 School Library Services</b>	<b>\$673,305.58</b>	<b>\$316,351.30</b>		<b>\$989,656.88</b>

**General Fund (10)**

	<u>Elementary</u>	<u>Secondary</u>	<u>Federal</u>	<u>Total</u>
<b>2260 Instruction and Curriculum Development Services</b>				
<b>100 Personnel Services – Salaries</b>				
100 Personnel Services – Salaries	449,910.70	287,835.81		737,746.51
<b>Total Personnel Services – Salaries</b>	<b>\$449,910.70</b>	<b>\$287,835.81</b>		<b>\$737,746.51</b>
<b>200 Personnel Services – Employee Benefits</b>				
210 Group Insurance – Contracted Provider	64,098.11	54,621.30		118,719.41
220 Social Security Contributions	33,600.91	20,459.56		54,060.47
230 PSERS Retirement Contributions	132,687.18	95,012.80		227,699.98
260 Workers' Compensation	4,361.36	2,590.21		6,951.57
270 Group Insurance – Self-Insurance	19,137.05	15,815.00		34,952.05
292 Health Savings Accounts	17,667.39	9,203.15		26,870.54
<b>Total Personnel Services – Employee Benefits</b>	<b>\$271,552.00</b>	<b>\$197,702.02</b>		<b>\$469,254.02</b>
<b>300 Purchased Professional and Technical Services</b>				
330 Other Professional Services	38,735.00			38,735.00
<b>Total Purchased Professional and Technical Services</b>	<b>\$38,735.00</b>			<b>\$38,735.00</b>
<b>500 Other Purchased Services</b>				
530 Communications	78.33	78.33		156.66
580 Travel	610.72	532.23		1,142.95
<b>Total Other Purchased Services</b>	<b>\$689.05</b>	<b>\$610.56</b>		<b>\$1,299.61</b>
<b>600 Supplies</b>				
610 General Supplies	539.34	270.52		809.86
630 Food	366.30	68.75		435.05
<b>Total Supplies</b>	<b>\$905.64</b>	<b>\$339.27</b>		<b>\$1,244.91</b>
<b>800 Other Objects</b>				
810 Dues and Fees		490.00		490.00
<b>Total Other Objects</b>		<b>\$490.00</b>		<b>\$490.00</b>
<b>Total 2260 Instruction and Curriculum Development Services</b>	<b>\$761,792.39</b>	<b>\$486,977.66</b>		<b>\$1,248,770.05</b>

**General Fund (10)**

	<u>Elementary</u>	<u>Secondary</u>	<u>Federal</u>	<u>Total</u>
<b>2270 Instructional Staff Professional Development Services</b>				
<b>100 Personnel Services – Salaries</b>				
100 Personnel Services – Salaries	323,763.24	134,376.47		458,139.71
<b>Total Personnel Services – Salaries</b>	<b>\$323,763.24</b>	<b>\$134,376.47</b>		<b>\$458,139.71</b>
<b>200 Personnel Services – Employee Benefits</b>				
210 Group Insurance – Contracted Provider	49,085.34	13,839.64		62,924.98
220 Social Security Contributions	24,163.45	10,006.91		34,170.36
230 PSERS Retirement Contributions	107,736.94	44,922.33		152,659.27
240 Tuition Reimbursement	34,394.80	48,097.16		82,491.96
260 Workers' Compensation	3,813.94	1,209.32		5,023.26
270 Group Insurance – Self-Insurance	11,856.33	3,729.00		15,585.33
<b>Total Personnel Services – Employee Benefits</b>	<b>\$231,050.80</b>	<b>\$121,804.36</b>		<b>\$352,855.16</b>
<b>300 Purchased Professional and Technical Services</b>				
322 Professional Educational Services – Ius			50,298.00	50,298.00
329 Professional Educational Services – Other	229,229.67	1,670.00		230,899.67
360 Employee Training and Development Services	19,427.77	28,334.90		47,762.67
<b>Total Purchased Professional and Technical Services</b>	<b>\$248,657.44</b>	<b>\$30,004.90</b>	<b>\$50,298.00</b>	<b>\$328,960.34</b>
<b>400 Purchased Property Services</b>				
430 Repairs and Maintenance Services	11,927.99	11,928.00		23,855.99
<b>Total Purchased Property Services</b>	<b>\$11,927.99</b>	<b>\$11,928.00</b>		<b>\$23,855.99</b>
<b>500 Other Purchased Services</b>				
580 Travel	20,418.12	25,154.21		45,572.33
<b>Total Other Purchased Services</b>	<b>\$20,418.12</b>	<b>\$25,154.21</b>		<b>\$45,572.33</b>
<b>600 Supplies</b>				
610 General Supplies	5,808.81	1,066.77		6,875.58
630 Food	3,768.13	3,088.41		6,856.54
640 Books and Periodicals	4,497.94	1,687.19		6,185.13
<b>Total Supplies</b>	<b>\$14,074.88</b>	<b>\$5,842.37</b>		<b>\$19,917.25</b>
<b>800 Other Objects</b>				
810 Dues and Fees	1,292.00	759.00		2,051.00
<b>Total Other Objects</b>	<b>\$1,292.00</b>	<b>\$759.00</b>		<b>\$2,051.00</b>
<b>Total 2270 Instructional Staff Professional Development Services</b>	<b>\$851,184.47</b>	<b>\$329,869.31</b>	<b>\$50,298.00</b>	<b>\$1,231,351.78</b>

General Fund (10)

	<u>Elementary</u>	<u>Secondary</u>	<u>Federal</u>	<u>Total</u>
<b>2290 Other Instructional Staff Services</b>				
<b>100 Personnel Services – Salaries</b>				
100 Personnel Services – Salaries	57,195.11	62,384.82		119,579.93
<b>Total Personnel Services – Salaries</b>	<b>\$57,195.11</b>	<b>\$62,384.82</b>		<b>\$119,579.93</b>
<b>200 Personnel Services – Employee Benefits</b>				
220 Social Security Contributions	4,317.88	4,643.19		8,961.07
230 PSERS Retirement Contributions	19,365.20	20,855.80		40,221.00
250 Unemployment Compensation	738.94			738.94
260 Workers' Compensation	522.18	561.48		1,083.66
<b>Total Personnel Services – Employee Benefits</b>	<b>\$24,944.20</b>	<b>\$26,060.47</b>		<b>\$51,004.67</b>
<b>Total 2290 Other Instructional Staff Services</b>	<b>\$82,139.31</b>	<b>\$88,445.29</b>		<b>\$170,584.60</b>

**General Fund (10)**

	<u>Elementary</u>	<u>Secondary</u>	<u>Federal</u>	<u>Total</u>
<b>2300 Support Services – Administration</b>				
<b>100 Personnel Services – Salaries</b>				
100 Personnel Services – Salaries	900,219.50	1,050,944.12		2,957,429.63
<b>Total Personnel Services – Salaries</b>	<b>\$900,219.50</b>	<b>\$1,050,944.12</b>		<b>\$2,957,429.63</b>
<b>200 Personnel Services – Employee Benefits</b>				
210 Group Insurance – Contracted Provider	138,621.74	226,954.53		514,070.29
220 Social Security Contributions	65,280.15	78,079.04		209,241.26
230 PSERS Retirement Contributions	291,664.62	336,321.20		944,875.38
250 Unemployment Compensation				14,607.00
260 Workers' Compensation	8,176.07	9,631.18		26,863.47
270 Group Insurance – Self-Insurance	31,029.40	55,412.44		124,895.81
291 Other Retirement Plans				1,450.00
292 Health Savings Accounts	27,294.75	34,962.29		109,976.50
<b>Total Personnel Services – Employee Benefits</b>	<b>\$562,066.73</b>	<b>\$741,360.68</b>		<b>\$1,945,979.71</b>
<b>300 Purchased Professional and Technical Services</b>				
329 Professional Educational Services – Other	178.20	361.80		540.00
330 Other Professional Services	(9,970.00)	38,170.00		328,784.48
340 Technical Services				7,790.08
<b>Total Purchased Professional and Technical Services</b>	<b>(\$9,791.80)</b>	<b>\$38,531.80</b>		<b>\$337,114.56</b>
<b>400 Purchased Property Services</b>				
430 Repairs and Maintenance Services		1,376.00		35,536.49
440 Rentals	93,021.82	112,433.79		205,455.61
<b>Total Purchased Property Services</b>	<b>\$93,021.82</b>	<b>\$113,809.79</b>		<b>\$240,992.10</b>
<b>500 Other Purchased Services</b>				
520 Insurance – General				49,966.50
530 Communications	69.89	15.10		4,110.99
541 Advertising Related to Federal Grant Awards				4,160.72
550 Printing and Binding		6,825.36		9,707.26
580 Travel				10,550.44
599 Other Miscellaneous Purchased Services				36,000.00
<b>Total Other Purchased Services</b>	<b>\$69.89</b>	<b>\$6,840.46</b>		<b>\$114,495.91</b>
<b>600 Supplies</b>				
610 General Supplies	9,569.09	10,272.94		44,698.66
630 Food	394.58	4,875.95		20,014.54
640 Books and Periodicals	247.51	701.73		4,272.12
<b>Total Supplies</b>	<b>\$10,211.18</b>	<b>\$15,850.62</b>		<b>\$68,985.32</b>
<b>700 Property</b>				
752 Capital Equipment – Original and Additional				2,556.90
762 Capitalized Equipment - Replacement				53.99
<b>Total Property</b>				<b>\$2,610.89</b>
<b>800 Other Objects</b>				
810 Dues and Fees	3,028.05	3,130.95		49,033.10

LEA : 125237603 Radnor Township SD

Printed 2/19/2020 9:53:17 AM

General Fund (10)

2300 Support Services – Administration

	<u>Elementary</u>	<u>Secondary</u>	<u>Federal</u>	<u>Total</u>
Total Other Objects	\$3,028.05	\$3,130.95		\$49,033.10
Total 2300 Support Services – Administration	\$1,558,825.37	\$1,970,468.42		\$5,716,641.22

General Fund (10)

2310 Board Services

Elementary

Secondary

Federal

Total

100 Personnel Services – Salaries

100 Personnel Services – Salaries

13,111.45

**Total Personnel Services – Salaries**

**\$13,111.45**

200 Personnel Services – Employee Benefits

220 Social Security Contributions

984.85

230 PSERS Retirement Contributions

4,383.14

260 Workers' Compensation

117.99

**Total Personnel Services – Employee Benefits**

**\$5,485.98**

300 Purchased Professional and Technical Services

330 Other Professional Services

30,947.44

**Total Purchased Professional and Technical Services**

**\$30,947.44**

500 Other Purchased Services

520 Insurance – General

48,347.50

580 Travel

1,378.50

**Total Other Purchased Services**

**\$49,726.00**

600 Supplies

610 General Supplies

12,257.90

630 Food

8,637.56

640 Books and Periodicals

1,224.00

**Total Supplies**

**\$22,119.46**

800 Other Objects

810 Dues and Fees

19,240.00

**Total Other Objects**

**\$19,240.00**

**Total 2310 Board Services**

**\$140,630.33**

General Fund (10)

2320 Board Treasurer Services

Elementary

Secondary

Federal

Total

500 Other Purchased Services

520 Insurance – General

1,619.00

**Total Other Purchased Services**

**\$1,619.00**

**Total 2320 Board Treasurer Services**

**\$1,619.00**

**General Fund (10)**

	<u>Elementary</u>	<u>Secondary</u>	<u>Federal</u>	<u>Total</u>
<b>2330 Tax Assessment and Collection Services</b>				
<b>100 Personnel Services – Salaries</b>				
100 Personnel Services – Salaries				36,225.71
<b>Total Personnel Services – Salaries</b>				<b>\$36,225.71</b>
<b>200 Personnel Services – Employee Benefits</b>				
210 Group Insurance – Contracted Provider				10,456.80
220 Social Security Contributions				2,665.76
230 PSERS Retirement Contributions				11,313.90
260 Workers' Compensation				326.00
270 Group Insurance – Self-Insurance				2,565.12
292 Health Savings Accounts				549.53
<b>Total Personnel Services – Employee Benefits</b>				<b>\$27,877.11</b>
<b>500 Other Purchased Services</b>				
530 Communications				4,026.00
550 Printing and Binding				2,655.00
<b>Total Other Purchased Services</b>				<b>\$6,681.00</b>
<b>600 Supplies</b>				
610 General Supplies				844.17
<b>Total Supplies</b>				<b>\$844.17</b>
<b>800 Other Objects</b>				
810 Dues and Fees				4.00
<b>Total Other Objects</b>				<b>\$4.00</b>
<b>Total 2330 Tax Assessment and Collection Services</b>				<b>\$71,631.99</b>

**General Fund (10)**

**2340 Staff Relations and Negotiations Services**

Elementary                      Secondary                      Federal                      Total

<b>100</b>	<b><u>Personnel Services – Salaries</u></b>			
	100 Personnel Services – Salaries			398,768.08
<b>Total Personnel Services – Salaries</b>				<b>\$398,768.08</b>
<b>200</b>	<b><u>Personnel Services – Employee Benefits</u></b>			
	210 Group Insurance – Contracted Provider			81,645.91
	220 Social Security Contributions			27,079.38
	230 PSERS Retirement Contributions			125,260.91
	250 Unemployment Compensation			14,607.00
	260 Workers' Compensation			3,588.84
	270 Group Insurance – Self-Insurance			20,786.24
	292 Health Savings Accounts			18,471.17
<b>Total Personnel Services – Employee Benefits</b>				<b>\$291,439.45</b>
<b>300</b>	<b><u>Purchased Professional and Technical Services</u></b>			
	330 Other Professional Services			30,096.40
	340 Technical Services			7,071.40
<b>Total Purchased Professional and Technical Services</b>				<b>\$37,167.80</b>
<b>400</b>	<b><u>Purchased Property Services</u></b>			
	430 Repairs and Maintenance Services			10,361.49
<b>Total Purchased Property Services</b>				<b>\$10,361.49</b>
<b>500</b>	<b><u>Other Purchased Services</u></b>			
	541 Advertising Related to Federal Grant Awards			4,160.72
	550 Printing and Binding			115.00
	580 Travel			4,380.19
<b>Total Other Purchased Services</b>				<b>\$8,655.91</b>
<b>600</b>	<b><u>Supplies</u></b>			
	610 General Supplies			4,036.79
	630 Food			3,492.78
	640 Books and Periodicals			75.00
<b>Total Supplies</b>				<b>\$7,604.57</b>
<b>700</b>	<b><u>Property</u></b>			
	752 Capital Equipment – Original and Additional			531.00
<b>Total Property</b>				<b>\$531.00</b>
<b>800</b>	<b><u>Other Objects</u></b>			
	810 Dues and Fees			2,260.00
<b>Total Other Objects</b>				<b>\$2,260.00</b>
<b>Total 2340 Staff Relations and Negotiations Services</b>				<b>\$756,788.30</b>

General Fund (10)

	<u>Elementary</u>	<u>Secondary</u>	<u>Federal</u>	<u>Total</u>
<b>2350 Legal and Accounting Services</b>				
<b>300 <u>Purchased Professional and Technical Services</u></b>				
330 Other Professional Services				233,205.79
<b>Total Purchased Professional and Technical Services</b>				<b>\$233,205.79</b>
<b>500 <u>Other Purchased Services</u></b>				
599 Other Miscellaneous Purchased Services				36,000.00
<b>Total Other Purchased Services</b>				<b>\$36,000.00</b>
<b>Total 2350 Legal and Accounting Services</b>				<b>\$269,205.79</b>

General Fund (10)

2360 Office of the Superintendent / Executive Director Services

Elementary

Secondary

Federal

Total

100 Personnel Services – Salaries

100 Personnel Services – Salaries 329,618.42

**Total Personnel Services – Salaries \$329,618.42**

200 Personnel Services – Employee Benefits

210 Group Insurance – Contracted Provider 29,371.44

220 Social Security Contributions 17,865.78

230 PSERS Retirement Contributions 101,518.59

260 Workers' Compensation 2,966.62

270 Group Insurance – Self-Insurance 8,068.52

291 Other Retirement Plans 1,450.00

292 Health Savings Accounts 23,925.05

**Total Personnel Services – Employee Benefits \$185,166.00**

300 Purchased Professional and Technical Services

330 Other Professional Services 900.00

**Total Purchased Professional and Technical Services \$900.00**

500 Other Purchased Services

580 Travel 3,348.02

**Total Other Purchased Services \$3,348.02**

600 Supplies

610 General Supplies 4,473.01

630 Food 2,119.94

640 Books and Periodicals 1,180.66

**Total Supplies \$7,773.61**

800 Other Objects

810 Dues and Fees 8,636.00

**Total Other Objects \$8,636.00**

**Total 2360 Office of the Superintendent / Executive Director Services \$535,442.05**

**General Fund (10)**

	<u>Elementary</u>	<u>Secondary</u>	<u>Federal</u>	<u>Total</u>
<b>2370 Community Relations Services</b>				
<b>100 Personnel Services – Salaries</b>				
100 Personnel Services – Salaries				146,751.20
<b>Total Personnel Services – Salaries</b>				<b>\$146,751.20</b>
<b>200 Personnel Services – Employee Benefits</b>				
210 Group Insurance – Contracted Provider				8,354.88
220 Social Security Contributions				11,203.90
230 PSERS Retirement Contributions				47,070.28
260 Workers' Compensation				1,320.77
270 Group Insurance – Self-Insurance				2,331.48
292 Health Savings Accounts				4,773.71
<b>Total Personnel Services – Employee Benefits</b>				<b>\$75,055.02</b>
<b>300 Purchased Professional and Technical Services</b>				
330 Other Professional Services				5,434.85
340 Technical Services				718.68
<b>Total Purchased Professional and Technical Services</b>				<b>\$6,153.53</b>
<b>400 Purchased Property Services</b>				
430 Repairs and Maintenance Services				23,799.00
<b>Total Purchased Property Services</b>				<b>\$23,799.00</b>
<b>500 Other Purchased Services</b>				
550 Printing and Binding				111.90
580 Travel				1,443.73
<b>Total Other Purchased Services</b>				<b>\$1,555.63</b>
<b>600 Supplies</b>				
610 General Supplies				3,244.76
630 Food				493.73
640 Books and Periodicals				843.22
<b>Total Supplies</b>				<b>\$4,581.71</b>
<b>700 Property</b>				
752 Capital Equipment – Original and Additional				2,025.90
762 Capitalized Equipment - Replacement				53.99
<b>Total Property</b>				<b>\$2,079.89</b>
<b>800 Other Objects</b>				
810 Dues and Fees				2,534.10
<b>Total Other Objects</b>				<b>\$2,534.10</b>
<b>Total 2370 Community Relations Services</b>				<b>\$262,510.08</b>

**General Fund (10)**

	<u>Elementary</u>	<u>Secondary</u>	<u>Federal</u>	<u>Total</u>
<b>2380 Office of the Principal Services</b>				
<b>100 Personnel Services – Salaries</b>				
100 Personnel Services – Salaries	900,219.50	1,050,944.12		1,951,163.62
<b>Total Personnel Services – Salaries</b>	<b>\$900,219.50</b>	<b>\$1,050,944.12</b>		<b>\$1,951,163.62</b>
<b>200 Personnel Services – Employee Benefits</b>				
210 Group Insurance – Contracted Provider	138,621.74	226,954.53		365,576.27
220 Social Security Contributions	65,280.15	78,079.04		143,359.19
230 PSERS Retirement Contributions	291,664.62	336,321.20		627,985.82
260 Workers' Compensation	8,176.07	9,631.18		17,807.25
270 Group Insurance – Self-Insurance	31,029.40	55,412.44		86,441.84
292 Health Savings Accounts	27,294.75	34,962.29		62,257.04
<b>Total Personnel Services – Employee Benefits</b>	<b>\$562,066.73</b>	<b>\$741,360.68</b>		<b>\$1,303,427.41</b>
<b>300 Purchased Professional and Technical Services</b>				
329 Professional Educational Services – Other	178.20	361.80		540.00
330 Other Professional Services	(9,970.00)	38,170.00		28,200.00
<b>Total Purchased Professional and Technical Services</b>	<b>(\$9,791.80)</b>	<b>\$38,531.80</b>		<b>\$28,740.00</b>
<b>400 Purchased Property Services</b>				
430 Repairs and Maintenance Services		1,376.00		1,376.00
440 Rentals	93,021.82	112,433.79		205,455.61
<b>Total Purchased Property Services</b>	<b>\$93,021.82</b>	<b>\$113,809.79</b>		<b>\$206,831.61</b>
<b>500 Other Purchased Services</b>				
530 Communications	69.89	15.10		84.99
550 Printing and Binding		6,825.36		6,825.36
<b>Total Other Purchased Services</b>	<b>\$69.89</b>	<b>\$6,840.46</b>		<b>\$6,910.35</b>
<b>600 Supplies</b>				
610 General Supplies	9,569.09	10,272.94		19,842.03
630 Food	394.58	4,875.95		5,270.53
640 Books and Periodicals	247.51	701.73		949.24
<b>Total Supplies</b>	<b>\$10,211.18</b>	<b>\$15,850.62</b>		<b>\$26,061.80</b>
<b>800 Other Objects</b>				
810 Dues and Fees	3,028.05	3,130.95		6,159.00
<b>Total Other Objects</b>	<b>\$3,028.05</b>	<b>\$3,130.95</b>		<b>\$6,159.00</b>
<b>Total 2380 Office of the Principal Services</b>	<b>\$1,558,825.37</b>	<b>\$1,970,468.42</b>		<b>\$3,529,293.79</b>

**General Fund (10)**

**2390 Other Administration Services**

Elementary

Secondary

Federal

Total

**100 Personnel Services – Salaries**

100 Personnel Services – Salaries

81,791.15

**Total Personnel Services – Salaries**

**\$81,791.15**

**200 Personnel Services – Employee Benefits**

210 Group Insurance – Contracted Provider

18,664.99

220 Social Security Contributions

6,082.40

230 PSERS Retirement Contributions

27,342.74

260 Workers' Compensation

736.00

270 Group Insurance – Self-Insurance

4,702.61

**Total Personnel Services – Employee Benefits**

**\$57,528.74**

**800 Other Objects**

810 Dues and Fees

10,200.00

**Total Other Objects**

**\$10,200.00**

**Total 2390 Other Administration Services**

**\$149,519.89**

**General Fund (10)**

**2400 Support Services – Pupil Health**

Elementary                      Secondary                      Federal                      Total

<b>100</b>	<b><u>Personnel Services – Salaries</u></b>				
	100 Personnel Services – Salaries				487,507.04
<b>Total Personnel Services – Salaries</b>					<b>\$487,507.04</b>
<b>200</b>	<b><u>Personnel Services – Employee Benefits</u></b>				
	210 Group Insurance – Contracted Provider				153,336.76
	220 Social Security Contributions				35,994.77
	230 PSERS Retirement Contributions				159,203.08
	260 Workers' Compensation				4,387.73
	270 Group Insurance – Self-Insurance				34,981.49
<b>Total Personnel Services – Employee Benefits</b>					<b>\$387,903.83</b>
<b>300</b>	<b><u>Purchased Professional and Technical Services</u></b>				
	330 Other Professional Services				240,841.31
<b>Total Purchased Professional and Technical Services</b>					<b>\$240,841.31</b>
<b>400</b>	<b><u>Purchased Property Services</u></b>				
	430 Repairs and Maintenance Services				635.11
<b>Total Purchased Property Services</b>					<b>\$635.11</b>
<b>500</b>	<b><u>Other Purchased Services</u></b>				
	530 Communications				24.63
	550 Printing and Binding				1,720.00
	580 Travel				435.81
<b>Total Other Purchased Services</b>					<b>\$2,180.44</b>
<b>600</b>	<b><u>Supplies</u></b>				
	610 General Supplies				11,481.49
<b>Total Supplies</b>					<b>\$11,481.49</b>
<b>700</b>	<b><u>Property</u></b>				
	752 Capital Equipment – Original and Additional				736.69
	762 Capitalized Equipment - Replacement				608.40
<b>Total Property</b>					<b>\$1,345.09</b>
<b>Total 2400 Support Services – Pupil Health</b>					<b>\$1,131,894.31</b>

General Fund (10)

2420 Medical Services

Elementary

Secondary

Federal

Total

300 Purchased Professional and Technical Services

330 Other Professional Services

6,904.33

**Total Purchased Professional and Technical Services**

**\$6,904.33**

**Total 2420 Medical Services**

**\$6,904.33**



**General Fund (10)**

**2500 Support Services – Business**

Elementary                      Secondary                      Federal                      Total

<b>100</b>	<b><u>Personnel Services – Salaries</u></b>			
	100 Personnel Services – Salaries			555,092.78
<b>Total Personnel Services – Salaries</b>				<b>\$555,092.78</b>
<b>200</b>	<b><u>Personnel Services – Employee Benefits</u></b>			
	210 Group Insurance – Contracted Provider			101,631.24
	220 Social Security Contributions			38,679.37
	230 PSERS Retirement Contributions			180,813.45
	260 Workers' Compensation			5,008.88
	270 Group Insurance – Self-Insurance			23,630.53
	292 Health Savings Accounts			21,674.18
<b>Total Personnel Services – Employee Benefits</b>				<b>\$371,437.65</b>
<b>300</b>	<b><u>Purchased Professional and Technical Services</u></b>			
	330 Other Professional Services			4,785.30
<b>Total Purchased Professional and Technical Services</b>				<b>\$4,785.30</b>
<b>400</b>	<b><u>Purchased Property Services</u></b>			
	440 Rentals			4,040.75
<b>Total Purchased Property Services</b>				<b>\$4,040.75</b>
<b>500</b>	<b><u>Other Purchased Services</u></b>			
	520 Insurance – General			66,102.50
	530 Communications			38,480.93
	541 Advertising Related to Federal Grant Awards			2,477.27
	580 Travel			2,492.07
<b>Total Other Purchased Services</b>				<b>\$109,552.77</b>
<b>600</b>	<b><u>Supplies</u></b>			
	610 General Supplies			7,971.48
	630 Food			173.00
<b>Total Supplies</b>				<b>\$8,144.48</b>
<b>800</b>	<b><u>Other Objects</u></b>			
	810 Dues and Fees			2,101.04
<b>Total Other Objects</b>				<b>\$2,101.04</b>
<b>Total 2500 Support Services – Business</b>				<b>\$1,055,154.77</b>

General Fund (10)

2510 Fiscal Services

Elementary

Secondary

Federal

Total

100 Personnel Services – Salaries

100 Personnel Services – Salaries 555,092.78

**Total Personnel Services – Salaries \$555,092.78**

200 Personnel Services – Employee Benefits

210 Group Insurance – Contracted Provider 101,631.24

220 Social Security Contributions 38,679.37

230 PSERS Retirement Contributions 180,813.45

260 Workers' Compensation 5,008.88

270 Group Insurance – Self-Insurance 23,630.53

292 Health Savings Accounts 21,674.18

**Total Personnel Services – Employee Benefits \$371,437.65**

300 Purchased Professional and Technical Services

330 Other Professional Services 4,785.30

**Total Purchased Professional and Technical Services \$4,785.30**

400 Purchased Property Services

440 Rentals 4,040.75

**Total Purchased Property Services \$4,040.75**

500 Other Purchased Services

520 Insurance – General 66,102.50

530 Communications 38,480.93

541 Advertising Related to Federal Grant Awards 2,477.27

580 Travel 2,492.07

**Total Other Purchased Services \$109,552.77**

600 Supplies

610 General Supplies 7,971.48

630 Food 173.00

**Total Supplies \$8,144.48**

800 Other Objects

810 Dues and Fees 2,101.04

**Total Other Objects \$2,101.04**

**Total 2510 Fiscal Services \$1,055,154.77**

General Fund (10)

2511 Supervision of Fiscal Services - Head of Component

Elementary

Secondary

Federal

Total

100 Personnel Services – Salaries

100 Personnel Services – Salaries

273,101.96

**Total Personnel Services – Salaries**

**\$273,101.96**

200 Personnel Services – Employee Benefits

210 Group Insurance – Contracted Provider

50,324.76

220 Social Security Contributions

17,832.83

230 PSERS Retirement Contributions

89,819.40

260 Workers' Compensation

2,511.71

270 Group Insurance – Self-Insurance

11,484.60

292 Health Savings Accounts

15,654.14

**Total Personnel Services – Employee Benefits**

**\$187,627.44**

**Total 2511 Supervision of Fiscal Services - Head of Component**

**\$460,729.40**

General Fund (10)

2514 Payroll Services

100 Personnel Services – Salaries

	<u>Elementary</u>	<u>Secondary</u>	<u>Federal</u>	<u>Total</u>
100 Personnel Services – Salaries				60,645.20
<b>Total Personnel Services – Salaries</b>				<b>\$60,645.20</b>
<b>200 Personnel Services – Employee Benefits</b>				
210 Group Insurance – Contracted Provider				17,075.52
220 Social Security Contributions				4,186.86
230 PSERS Retirement Contributions				17,095.50
260 Workers' Compensation				505.00
270 Group Insurance – Self-Insurance				3,133.79
<b>Total Personnel Services – Employee Benefits</b>				<b>\$41,996.67</b>
<b>Total 2514 Payroll Services</b>				<b>\$102,641.87</b>

General Fund (10)

	<u>Elementary</u>	<u>Secondary</u>	<u>Federal</u>	<u>Total</u>
<b>2515 Financial Accounting Services</b>				
<b>100 Personnel Services – Salaries</b>				
100 Personnel Services – Salaries				120,402.42
<b>Total Personnel Services – Salaries</b>				<b>\$120,402.42</b>
<b>200 Personnel Services – Employee Benefits</b>				
210 Group Insurance – Contracted Provider				18,597.12
220 Social Security Contributions				9,035.54
230 PSERS Retirement Contributions				40,250.53
260 Workers' Compensation				1,083.68
270 Group Insurance – Self-Insurance				3,789.48
292 Health Savings Accounts				6,020.04
<b>Total Personnel Services – Employee Benefits</b>				<b>\$78,776.39</b>
<b>Total 2515 Financial Accounting Services</b>				<b>\$199,178.81</b>

**General Fund (10)**

**2519 Other Fiscal Services**

	<u>Elementary</u>	<u>Secondary</u>	<u>Federal</u>	<u>Total</u>
<b>100 Personnel Services – Salaries</b>				
100 Personnel Services – Salaries				100,943.20
<b>Total Personnel Services – Salaries</b>				<b>\$100,943.20</b>
<b>200 Personnel Services – Employee Benefits</b>				
210 Group Insurance – Contracted Provider				15,633.84
220 Social Security Contributions				7,624.14
230 PSERS Retirement Contributions				33,648.02
260 Workers' Compensation				908.49
270 Group Insurance – Self-Insurance				5,222.66
<b>Total Personnel Services – Employee Benefits</b>				<b>\$63,037.15</b>
<b>300 Purchased Professional and Technical Services</b>				
330 Other Professional Services				4,785.30
<b>Total Purchased Professional and Technical Services</b>				<b>\$4,785.30</b>
<b>400 Purchased Property Services</b>				
440 Rentals				4,040.75
<b>Total Purchased Property Services</b>				<b>\$4,040.75</b>
<b>500 Other Purchased Services</b>				
520 Insurance – General				66,102.50
530 Communications				38,480.93
541 Advertising Related to Federal Grant Awards				2,477.27
580 Travel				2,492.07
<b>Total Other Purchased Services</b>				<b>\$109,552.77</b>
<b>600 Supplies</b>				
610 General Supplies				7,971.48
630 Food				173.00
<b>Total Supplies</b>				<b>\$8,144.48</b>
<b>800 Other Objects</b>				
810 Dues and Fees				2,101.04
<b>Total Other Objects</b>				<b>\$2,101.04</b>
<b>Total 2519 Other Fiscal Services</b>				<b>\$292,604.69</b>

**General Fund (10)**

	<u>Elementary</u>	<u>Secondary</u>	<u>Federal</u>	<u>Total</u>
<b>2600 Operation and Maintenance of Plant Services</b>				
<b>100 Personnel Services – Salaries</b>				
100 Personnel Services – Salaries				3,177,841.30
<b>Total Personnel Services – Salaries</b>				<b>\$3,177,841.30</b>
<b>200 Personnel Services – Employee Benefits</b>				
210 Group Insurance – Contracted Provider				764,084.59
220 Social Security Contributions				240,167.14
230 PSERS Retirement Contributions				1,067,696.45
250 Unemployment Compensation				970.00
260 Workers' Compensation				28,793.96
270 Group Insurance – Self-Insurance				193,014.87
292 Health Savings Accounts				79,470.05
<b>Total Personnel Services – Employee Benefits</b>				<b>\$2,374,197.06</b>
<b>300 Purchased Professional and Technical Services</b>				
330 Other Professional Services				109,801.13
<b>Total Purchased Professional and Technical Services</b>				<b>\$109,801.13</b>
<b>400 Purchased Property Services</b>				
410 Cleaning Services				288,836.98
420 Utility Services				120,269.08
430 Repairs and Maintenance Services				561,962.40
440 Rentals				2,870.90
460 Extermination Services				9,638.31
<b>Total Purchased Property Services</b>				<b>\$983,577.67</b>
<b>500 Other Purchased Services</b>				
523 General Property and Liability Insurance				126,468.50
530 Communications				163,977.98
580 Travel				2,680.58
<b>Total Other Purchased Services</b>				<b>\$293,127.06</b>
<b>600 Supplies</b>				
610 General Supplies	285,507.01	285,175.40		570,682.41
620 Energy				808,173.25
630 Food				1,198.20
<b>Total Supplies</b>	<b>\$285,507.01</b>	<b>\$285,175.40</b>		<b>\$1,380,053.86</b>
<b>700 Property</b>				
752 Capital Equipment – Original and Additional				4,999.75
762 Capitalized Equipment - Replacement				78,339.81
<b>Total Property</b>				<b>\$83,339.56</b>
<b>800 Other Objects</b>				
810 Dues and Fees				39,597.65
<b>Total Other Objects</b>				<b>\$39,597.65</b>
<b>Total 2600 Operation and Maintenance of Plant Services</b>	<b>\$285,507.01</b>	<b>\$285,175.40</b>		<b>\$8,441,535.29</b>

**General Fund (10)**

**2610 Supervision of Operation and Maintenance of Plant Services**

	<u>Elementary</u>	<u>Secondary</u>	<u>Federal</u>	<u>Total</u>
<b>100 Personnel Services – Salaries</b>				
100 Personnel Services – Salaries				195,410.05
<b>Total Personnel Services – Salaries</b>				<b>\$195,410.05</b>
<b>200 Personnel Services – Employee Benefits</b>				
210 Group Insurance – Contracted Provider				59,589.84
220 Social Security Contributions				14,767.44
230 PSERS Retirement Contributions				65,242.28
250 Unemployment Compensation				970.00
260 Workers' Compensation				1,758.55
270 Group Insurance – Self-Insurance				10,706.34
292 Health Savings Accounts				59,929.75
<b>Total Personnel Services – Employee Benefits</b>				<b>\$212,964.20</b>
<b>300 Purchased Professional and Technical Services</b>				
330 Other Professional Services				49,643.91
<b>Total Purchased Professional and Technical Services</b>				<b>\$49,643.91</b>
<b>400 Purchased Property Services</b>				
410 Cleaning Services				288,836.98
420 Utility Services				120,269.08
430 Repairs and Maintenance Services				558,212.00
440 Rentals				2,870.90
460 Extermination Services				9,638.31
<b>Total Purchased Property Services</b>				<b>\$979,827.27</b>
<b>500 Other Purchased Services</b>				
523 General Property and Liability Insurance				126,468.50
530 Communications				163,977.98
580 Travel				1,879.18
<b>Total Other Purchased Services</b>				<b>\$292,325.66</b>
<b>600 Supplies</b>				
610 General Supplies	282,718.80	282,387.19		565,105.99
620 Energy				808,173.25
630 Food				1,198.20
<b>Total Supplies</b>	<b>\$282,718.80</b>	<b>\$282,387.19</b>		<b>\$1,374,477.44</b>
<b>700 Property</b>				
752 Capital Equipment – Original and Additional				4,999.75
762 Capitalized Equipment - Replacement				65,746.23
<b>Total Property</b>				<b>\$70,745.98</b>
<b>800 Other Objects</b>				
810 Dues and Fees				39,597.65
<b>Total Other Objects</b>				<b>\$39,597.65</b>
<b>Total 2610 Supervision of Operation and Maintenance of Plant Services</b>	<b>\$282,718.80</b>	<b>\$282,387.19</b>		<b>\$3,214,992.16</b>

General Fund (10)

2611 Supervision of Operation and Maintenance of Plant Services – Head of Component

Elementary

Secondary

Federal

Total

100 Personnel Services – Salaries

100 Personnel Services – Salaries

105,505.46

**Total Personnel Services – Salaries**

**\$105,505.46**

200 Personnel Services – Employee Benefits

210 Group Insurance – Contracted Provider

38,858.04

220 Social Security Contributions

7,990.54

230 PSERS Retirement Contributions

35,187.07

260 Workers' Compensation

949.43

270 Group Insurance – Self-Insurance

4,799.32

292 Health Savings Accounts

55,434.61

**Total Personnel Services – Employee Benefits**

**\$143,219.01**

**Total 2611 Supervision of Operation and Maintenance of Plant Services – Head of Component**

**\$248,724.47**

**General Fund (10)**

**2619 Supervision of Operation and Maintenance of Plant Services – All Other Supervision**

	<u>Elementary</u>	<u>Secondary</u>	<u>Federal</u>	<u>Total</u>
<b>100 Personnel Services – Salaries</b>				
100 Personnel Services – Salaries				89,904.59
<b>Total Personnel Services – Salaries</b>				<b>\$89,904.59</b>
<b>200 Personnel Services – Employee Benefits</b>				
210 Group Insurance – Contracted Provider				20,731.80
220 Social Security Contributions				6,776.90
230 PSERS Retirement Contributions				30,055.21
250 Unemployment Compensation				970.00
260 Workers' Compensation				809.12
270 Group Insurance – Self-Insurance				5,907.02
292 Health Savings Accounts				4,495.14
<b>Total Personnel Services – Employee Benefits</b>				<b>\$69,745.19</b>
<b>300 Purchased Professional and Technical Services</b>				
330 Other Professional Services				49,643.91
<b>Total Purchased Professional and Technical Services</b>				<b>\$49,643.91</b>
<b>400 Purchased Property Services</b>				
410 Cleaning Services				288,836.98
420 Utility Services				120,269.08
430 Repairs and Maintenance Services				558,212.00
440 Rentals				2,870.90
460 Extermination Services				9,638.31
<b>Total Purchased Property Services</b>				<b>\$979,827.27</b>
<b>500 Other Purchased Services</b>				
523 General Property and Liability Insurance				126,468.50
530 Communications				163,977.98
580 Travel				1,879.18
<b>Total Other Purchased Services</b>				<b>\$292,325.66</b>
<b>600 Supplies</b>				
610 General Supplies	282,718.80	282,387.19		565,105.99
620 Energy				808,173.25
630 Food				1,198.20
<b>Total Supplies</b>	<b>\$282,718.80</b>	<b>\$282,387.19</b>		<b>\$1,374,477.44</b>
<b>700 Property</b>				
752 Capital Equipment – Original and Additional				4,999.75
762 Capitalized Equipment - Replacement				65,746.23
<b>Total Property</b>				<b>\$70,745.98</b>
<b>800 Other Objects</b>				
810 Dues and Fees				39,597.65
<b>Total Other Objects</b>				<b>\$39,597.65</b>
<b>Total 2619 Supervision of Operation and Maintenance of Plant Services – All Other Supervision</b>	<b>\$282,718.80</b>	<b>\$282,387.19</b>		<b>\$2,966,267.69</b>

General Fund (10)

	<u>Elementary</u>	<u>Secondary</u>	<u>Federal</u>	<u>Total</u>
<b>2620 Operation of Buildings Services</b>				
<b>100 Personnel Services – Salaries</b>				
100 Personnel Services – Salaries				2,752,054.14
<b>Total Personnel Services – Salaries</b>				<b>\$2,752,054.14</b>
<b>200 Personnel Services – Employee Benefits</b>				
210 Group Insurance – Contracted Provider				663,270.79
220 Social Security Contributions				207,778.36
230 PSERS Retirement Contributions				920,336.64
260 Workers' Compensation				24,962.09
270 Group Insurance – Self-Insurance				170,995.37
292 Health Savings Accounts				17,802.52
<b>Total Personnel Services – Employee Benefits</b>				<b>\$2,005,145.77</b>
<b>Total 2620 Operation of Buildings Services</b>				<b>\$4,757,199.91</b>

**General Fund (10)**

	<u>Elementary</u>	<u>Secondary</u>	<u>Federal</u>	<u>Total</u>
<b>2660 Safety and Security Services</b>				
<b>100 Personnel Services – Salaries</b>				
100 Personnel Services – Salaries				230,377.11
<b>Total Personnel Services – Salaries</b>				<b>\$230,377.11</b>
<b>200 Personnel Services – Employee Benefits</b>				
210 Group Insurance – Contracted Provider				41,223.96
220 Social Security Contributions				17,621.34
230 PSERS Retirement Contributions				82,117.53
260 Workers' Compensation				2,073.32
270 Group Insurance – Self-Insurance				11,313.16
292 Health Savings Accounts				1,737.78
<b>Total Personnel Services – Employee Benefits</b>				<b>\$156,087.09</b>
<b>300 Purchased Professional and Technical Services</b>				
330 Other Professional Services				60,157.22
<b>Total Purchased Professional and Technical Services</b>				<b>\$60,157.22</b>
<b>400 Purchased Property Services</b>				
430 Repairs and Maintenance Services				3,750.40
<b>Total Purchased Property Services</b>				<b>\$3,750.40</b>
<b>500 Other Purchased Services</b>				
580 Travel				801.40
<b>Total Other Purchased Services</b>				<b>\$801.40</b>
<b>600 Supplies</b>				
610 General Supplies	2,788.21	2,788.21		5,576.42
<b>Total Supplies</b>	<b>\$2,788.21</b>	<b>\$2,788.21</b>		<b>\$5,576.42</b>
<b>700 Property</b>				
762 Capitalized Equipment - Replacement				12,593.58
<b>Total Property</b>				<b>\$12,593.58</b>
<b>Total 2660 Safety and Security Services</b>	<b>\$2,788.21</b>	<b>\$2,788.21</b>		<b>\$469,343.22</b>

General Fund (10)

2700 Student Transportation Services

Elementary                      Secondary                      Federal                      Total

**100 Personnel Services – Salaries**  
100 Personnel Services – Salaries 2,249,894.55

**Total Personnel Services – Salaries \$2,249,894.55**

**200 Personnel Services – Employee Benefits**  
210 Group Insurance – Contracted Provider 721,609.83  
220 Social Security Contributions 164,130.32  
230 PSERS Retirement Contributions 740,046.81  
250 Unemployment Compensation 4,997.19  
260 Workers' Compensation 20,249.00  
270 Group Insurance – Self-Insurance 168,761.80  
292 Health Savings Accounts 10,615.65

**Total Personnel Services – Employee Benefits \$1,830,410.60**

**300 Purchased Professional and Technical Services**  
330 Other Professional Services 4,500.14  
340 Technical Services 59,914.18

**Total Purchased Professional and Technical Services \$64,414.32**

**400 Purchased Property Services**  
410 Cleaning Services 1,951.11  
430 Repairs and Maintenance Services 17,449.58

**Total Purchased Property Services \$19,400.69**

**500 Other Purchased Services**  
513 Contracted Carriers 21,752.13  
515 Public Carriers 4,686.00  
516 Student Transportation Services From the IU 15,629.37  
522 Automotive Liability Insurance 45,345.00  
530 Communications 14,648.40  
550 Printing and Binding 720.00  
580 Travel 1,053.87

**Total Other Purchased Services \$103,834.77**

**600 Supplies**  
610 General Supplies 138,086.55  
620 Energy 193,162.15  
630 Food 123.91

**Total Supplies \$331,372.61**

**800 Other Objects**  
810 Dues and Fees 1,592.75

**Total Other Objects \$1,592.75**

**Total 2700 Student Transportation Services \$4,600,920.29**

**General Fund (10)**

**2710 Supervision of Student Transportation Services**

Elementary                      Secondary                      Federal                      Total

<b>100</b>	<b><u>Personnel Services – Salaries</u></b>			
	100 Personnel Services – Salaries			232,206.26
<b>Total Personnel Services – Salaries</b>				<b>\$232,206.26</b>
<b>200</b>	<b><u>Personnel Services – Employee Benefits</u></b>			
	210 Group Insurance – Contracted Provider			48,279.48
	220 Social Security Contributions			17,322.58
	230 PSERS Retirement Contributions			77,626.67
	260 Workers' Compensation			2,089.66
	270 Group Insurance – Self-Insurance			12,444.28
	292 Health Savings Accounts			5,282.94
<b>Total Personnel Services – Employee Benefits</b>				<b>\$163,045.61</b>
<b>300</b>	<b><u>Purchased Professional and Technical Services</u></b>			
	330 Other Professional Services			4,500.14
	340 Technical Services			59,914.18
<b>Total Purchased Professional and Technical Services</b>				<b>\$64,414.32</b>
<b>400</b>	<b><u>Purchased Property Services</u></b>			
	410 Cleaning Services			1,951.11
	430 Repairs and Maintenance Services			17,449.58
<b>Total Purchased Property Services</b>				<b>\$19,400.69</b>
<b>500</b>	<b><u>Other Purchased Services</u></b>			
	513 Contracted Carriers			17,099.63
	515 Public Carriers			4,686.00
	516 Student Transportation Services From the IU			15,629.37
	522 Automotive Liability Insurance			45,345.00
	530 Communications			14,648.40
	550 Printing and Binding			720.00
	580 Travel			1,053.87
<b>Total Other Purchased Services</b>				<b>\$99,182.27</b>
<b>600</b>	<b><u>Supplies</u></b>			
	610 General Supplies			136,658.55
	620 Energy			193,133.35
	630 Food			123.91
<b>Total Supplies</b>				<b>\$329,915.81</b>
<b>800</b>	<b><u>Other Objects</u></b>			
	810 Dues and Fees			1,592.75
<b>Total Other Objects</b>				<b>\$1,592.75</b>
<b>Total 2710 Supervision of Student Transportation Services</b>				<b>\$909,757.71</b>

General Fund (10)

2711 Supervision of Student Transportation Services – Head of Component

Elementary

Secondary

Federal

Total

100 Personnel Services – Salaries

100 Personnel Services – Salaries

232,206.26

**Total Personnel Services – Salaries**

**\$232,206.26**

200 Personnel Services – Employee Benefits

210 Group Insurance – Contracted Provider

48,279.48

220 Social Security Contributions

17,322.58

230 PSERS Retirement Contributions

77,626.67

260 Workers' Compensation

2,089.66

270 Group Insurance – Self-Insurance

12,444.28

292 Health Savings Accounts

5,282.94

**Total Personnel Services – Employee Benefits**

**\$163,045.61**

**Total 2711 Supervision of Student Transportation Services – Head of Component**

**\$395,251.87**

**General Fund (10)**

	<u>Elementary</u>	<u>Secondary</u>	<u>Federal</u>	<u>Total</u>
<b>2719 Supervision of Student Transportation Services – All Other Supervision</b>				
<b>300 <u>Purchased Professional and Technical Services</u></b>				
330 Other Professional Services				4,500.14
340 Technical Services				59,914.18
<b>Total Purchased Professional and Technical Services</b>				<b>\$64,414.32</b>
<b>400 <u>Purchased Property Services</u></b>				
410 Cleaning Services				1,951.11
430 Repairs and Maintenance Services				17,449.58
<b>Total Purchased Property Services</b>				<b>\$19,400.69</b>
<b>500 <u>Other Purchased Services</u></b>				
513 Contracted Carriers				17,099.63
515 Public Carriers				4,686.00
516 Student Transportation Services From the IU				15,629.37
522 Automotive Liability Insurance				45,345.00
530 Communications				14,648.40
550 Printing and Binding				720.00
580 Travel				1,053.87
<b>Total Other Purchased Services</b>				<b>\$99,182.27</b>
<b>600 <u>Supplies</u></b>				
610 General Supplies				136,658.55
620 Energy				193,133.35
630 Food				123.91
<b>Total Supplies</b>				<b>\$329,915.81</b>
<b>800 <u>Other Objects</u></b>				
810 Dues and Fees				1,592.75
<b>Total Other Objects</b>				<b>\$1,592.75</b>
<b>Total 2719 Supervision of Student Transportation Services – All Other Supervision</b>				<b>\$514,505.84</b>

**General Fund (10)**

**2720 Vehicle Operation Services**

**100 Personnel Services – Salaries**

	<u>Elementary</u>	<u>Secondary</u>	<u>Federal</u>	<u>Total</u>
100 Personnel Services – Salaries				1,619,014.09

<b>Total Personnel Services – Salaries</b>				<b>\$1,619,014.09</b>
--	--	--	--	-----------------------

**200 Personnel Services – Employee Benefits**

210 Group Insurance – Contracted Provider				584,846.46
---	--	--	--	------------

220 Social Security Contributions				117,902.02
-----------------------------------	--	--	--	------------

230 PSERS Retirement Contributions				531,449.23
------------------------------------	--	--	--	------------

250 Unemployment Compensation				4,997.19
-------------------------------	--	--	--	----------

260 Workers' Compensation				14,571.23
---------------------------	--	--	--	-----------

270 Group Insurance – Self-Insurance				134,651.84
--------------------------------------	--	--	--	------------

292 Health Savings Accounts				2,959.95
-----------------------------	--	--	--	----------

<b>Total Personnel Services – Employee Benefits</b>				<b>\$1,391,377.92</b>
---	--	--	--	-----------------------

**600 Supplies**

620 Energy				28.80
------------	--	--	--	-------

<b>Total Supplies</b>				<b>\$28.80</b>
-----------------------	--	--	--	----------------

<b>Total 2720 Vehicle Operation Services</b>				<b>\$3,010,420.81</b>
--	--	--	--	-----------------------

General Fund (10)

2730 Monitoring Services

Elementary

Secondary

Federal

Total

100 Personnel Services – Salaries

100 Personnel Services – Salaries

152,736.86

**Total Personnel Services – Salaries**

**\$152,736.86**

200 Personnel Services – Employee Benefits

210 Group Insurance – Contracted Provider

50,552.73

220 Social Security Contributions

10,309.07

230 PSERS Retirement Contributions

49,757.17

260 Workers' Compensation

1,374.74

270 Group Insurance – Self-Insurance

14,828.32

**Total Personnel Services – Employee Benefits**

**\$126,822.03**

**Total 2730 Monitoring Services**

**\$279,558.89**

General Fund (10)

2740 Vehicle Servicing and Maintenance Services

Elementary

Secondary

Federal

Total

100 Personnel Services – Salaries

100 Personnel Services – Salaries

245,937.34

**Total Personnel Services – Salaries**

**\$245,937.34**

200 Personnel Services – Employee Benefits

210 Group Insurance – Contracted Provider

37,931.16

220 Social Security Contributions

18,596.65

230 PSERS Retirement Contributions

81,213.74

260 Workers' Compensation

2,213.37

270 Group Insurance – Self-Insurance

6,837.36

292 Health Savings Accounts

2,372.76

**Total Personnel Services – Employee Benefits**

**\$149,165.04**

**Total 2740 Vehicle Servicing and Maintenance Services**

**\$395,102.38**

General Fund (10)

	<u>Elementary</u>	<u>Secondary</u>	<u>Federal</u>	<u>Total</u>
<b>2750 Nonpublic Transportation</b>				
<b>500 <u>Other Purchased Services</u></b>				
513 Contracted Carriers				4,652.50
<b>Total Other Purchased Services</b>				<b>\$4,652.50</b>
<b>600 <u>Supplies</u></b>				
610 General Supplies				1,428.00
<b>Total Supplies</b>				<b>\$1,428.00</b>
<b>Total 2750 Nonpublic Transportation</b>				<b>\$6,080.50</b>

General Fund (10)

2800 Support Services – Central

Elementary                      Secondary                      Federal                      Total

100 Personnel Services – Salaries

100 Personnel Services – Salaries 636,843.39

**Total Personnel Services – Salaries \$636,843.39**

200 Personnel Services – Employee Benefits

210 Group Insurance – Contracted Provider 75,103.56

220 Social Security Contributions 47,350.20

230 PSERS Retirement Contributions 207,015.43

240 Tuition Reimbursement 19,071.80

260 Workers' Compensation 5,731.96

270 Group Insurance – Self-Insurance 18,700.51

292 Health Savings Accounts 7,179.22

**Total Personnel Services – Employee Benefits \$380,152.68**

300 Purchased Professional and Technical Services

330 Other Professional Services 159,201.29

340 Technical Services 253,292.85

**Total Purchased Professional and Technical Services \$412,494.14**

400 Purchased Property Services

430 Repairs and Maintenance Services 107,109.60

**Total Purchased Property Services \$107,109.60**

500 Other Purchased Services

530 Communications 38.75

580 Travel 8,599.44

**Total Other Purchased Services \$8,638.19**

600 Supplies

610 General Supplies 47,691.68

630 Food 175.58

**Total Supplies \$47,867.26**

700 Property

752 Capital Equipment – Original and Additional 679.96

756 Capitalized Technology Equipment – Original 249,062.33

766 Capitalized Technology Equipment – Replacement 39,318.00

**Total Property \$289,060.29**

800 Other Objects

810 Dues and Fees 2,091.00

**Total Other Objects \$2,091.00**

**Total 2800 Support Services – Central \$1,884,256.55**

General Fund (10)

2830 Staff Services

Elementary

Secondary

Federal

Total

200 Personnel Services – Employee Benefits

240 Tuition Reimbursement

19,071.80

**Total Personnel Services – Employee Benefits**

**\$19,071.80**

**Total 2830 Staff Services**

**\$19,071.80**

General Fund (10)

2834 Staff Development Services – Non-Instructional, Certified Staff Only

Elementary

Secondary

Federal

Total

200 Personnel Services – Employee Benefits

240 Tuition Reimbursement

7,432.20

**Total Personnel Services – Employee Benefits**

**\$7,432.20**

**Total 2834 Staff Development Services – Non-Instructional, Certified Staff Only**

**\$7,432.20**

General Fund (10)

	<u>Elementary</u>	<u>Secondary</u>	<u>Federal</u>	<u>Total</u>
<b>2836 Staff Development Services – Non-Instructional, Non-Certified Staff Only</b>				
<b>200 Personnel Services – Employee Benefits</b>				
240 Tuition Reimbursement				11,639.60
<b>Total Personnel Services – Employee Benefits</b>				<b>\$11,639.60</b>
<b>Total 2836 Staff Development Services – Non-Instructional, Non-Certified Staff Only</b>				<b>\$11,639.60</b>

General Fund (10)

2840 Data Processing Services

Elementary                      Secondary                      Federal                      Total

100 Personnel Services – Salaries

100 Personnel Services – Salaries 636,843.39

**Total Personnel Services – Salaries \$636,843.39**

200 Personnel Services – Employee Benefits

210 Group Insurance – Contracted Provider 75,103.56

220 Social Security Contributions 47,350.20

230 PSERS Retirement Contributions 207,015.43

260 Workers' Compensation 5,731.96

270 Group Insurance – Self-Insurance 18,700.51

292 Health Savings Accounts 7,179.22

**Total Personnel Services – Employee Benefits \$361,080.88**

300 Purchased Professional and Technical Services

330 Other Professional Services 159,201.29

340 Technical Services 253,292.85

**Total Purchased Professional and Technical Services \$412,494.14**

400 Purchased Property Services

430 Repairs and Maintenance Services 107,109.60

**Total Purchased Property Services \$107,109.60**

500 Other Purchased Services

530 Communications 38.75

580 Travel 8,599.44

**Total Other Purchased Services \$8,638.19**

600 Supplies

610 General Supplies 47,691.68

630 Food 175.58

**Total Supplies \$47,867.26**

700 Property

752 Capital Equipment – Original and Additional 679.96

756 Capitalized Technology Equipment – Original 249,062.33

766 Capitalized Technology Equipment – Replacement 39,318.00

**Total Property \$289,060.29**

800 Other Objects

810 Dues and Fees 2,091.00

**Total Other Objects \$2,091.00**

**Total 2840 Data Processing Services \$1,865,184.75**

General Fund (10)

2900 Other Support Services

Elementary

Secondary

Federal

Total

500 Other Purchased Services

595 IU Payments By Withholding

80,986.58

**Total Other Purchased Services**

**\$80,986.58**

**Total 2900 Other Support Services**

**\$80,986.58**

General Fund (10)

2910 Support Services Not Listed Elsewhere In the 2000 Series

Elementary

Secondary

Federal

Total

500 Other Purchased Services

595 IU Payments By Withholding

80,986.58

**Total Other Purchased Services**

**\$80,986.58**

**Total 2910 Support Services Not Listed Elsewhere In the 2000 Series**

**\$80,986.58**

**General Fund (10)**

**3000 Operation of Non-Instructional Services**

**Total**

**100 Personnel Services – Salaries**

100 Personnel Services – Salaries 743,581.14

**Total Personnel Services – Salaries \$743,581.14**

**200 Personnel Services – Employee Benefits**

210 Group Insurance – Contracted Provider 8,025.48

220 Social Security Contributions 56,258.82

230 PSERS Retirement Contributions 233,005.02

250 Unemployment Compensation 125.60

260 Workers' Compensation 6,692.52

270 Group Insurance – Self-Insurance 2,418.48

292 Health Savings Accounts 5,073.12

**Total Personnel Services – Employee Benefits \$311,599.04**

**300 Purchased Professional and Technical Services**

330 Other Professional Services 79,440.12

390 Other Purchased Professional and Technical Services 49,118.50

**Total Purchased Professional and Technical Services \$128,558.62**

**400 Purchased Property Services**

430 Repairs and Maintenance Services 8,176.68

**Total Purchased Property Services \$8,176.68**

**500 Other Purchased Services**

520 Insurance – General 8,362.00

580 Travel 17,480.43

**Total Other Purchased Services \$25,842.43**

**600 Supplies**

610 General Supplies 86,340.63

630 Food 206.50

**Total Supplies \$86,547.13**

**700 Property**

752 Capital Equipment – Original and Additional 1,532.50

**Total Property \$1,532.50**

**800 Other Objects**

810 Dues and Fees 93,690.24

**Total Other Objects \$93,690.24**

**Total 3000 Operation of Non-Instructional Services \$1,399,527.78**

General Fund (10)

3200 Student Activities

Elementary                      Secondary                      Federal                      Total

100 Personnel Services – Salaries  
100 Personnel Services – Salaries 739,286.92

**Total Personnel Services – Salaries \$739,286.92**

200 Personnel Services – Employee Benefits  
210 Group Insurance – Contracted Provider 8,025.48  
220 Social Security Contributions 55,938.00  
230 PSERS Retirement Contributions 231,569.45  
250 Unemployment Compensation 125.60  
260 Workers' Compensation 6,653.85  
270 Group Insurance – Self-Insurance 2,418.48  
292 Health Savings Accounts 5,073.12

**Total Personnel Services – Employee Benefits \$309,803.98**

300 Purchased Professional and Technical Services  
330 Other Professional Services 79,440.12  
390 Other Purchased Professional and Technical Services 49,118.50

**Total Purchased Professional and Technical Services \$128,558.62**

400 Purchased Property Services  
430 Repairs and Maintenance Services 8,176.68

**Total Purchased Property Services \$8,176.68**

500 Other Purchased Services  
520 Insurance – General 8,362.00  
580 Travel 17,480.43

**Total Other Purchased Services \$25,842.43**

600 Supplies  
610 General Supplies 86,340.63

**Total Supplies \$86,340.63**

700 Property  
752 Capital Equipment – Original and Additional 1,532.50

**Total Property \$1,532.50**

800 Other Objects  
810 Dues and Fees 93,690.24

**Total Other Objects \$93,690.24**

**Total 3200 Student Activities \$1,393,232.00**

**General Fund (10)**

**3300 Community Services**

**100 Personnel Services – Salaries**

	<u>Elementary</u>	<u>Secondary</u>	<u>Federal</u>	<u>Total</u>
100 Personnel Services – Salaries			4,294.22	4,294.22
<b>Total Personnel Services – Salaries</b>			<b>\$4,294.22</b>	<b>\$4,294.22</b>

**200 Personnel Services – Employee Benefits**

220 Social Security Contributions			320.82	320.82
230 PSERS Retirement Contributions			1,435.57	1,435.57
260 Workers' Compensation			38.67	38.67
<b>Total Personnel Services – Employee Benefits</b>			<b>\$1,795.06</b>	<b>\$1,795.06</b>

**600 Supplies**

630 Food			206.50	206.50
<b>Total Supplies</b>			<b>\$206.50</b>	<b>\$206.50</b>
<b>Total 3300 Community Services</b>			<b>\$6,295.78</b>	<b>\$6,295.78</b>

**General Fund (10)**

**5000 Other Expenditures and Financing Uses**

**Total**

**800 Other Objects**

830 Interest 2,882,381.43

**Total Other Objects \$2,882,381.43**

**900 Other Uses of Funds**

910 Redemption of Principal 3,669,000.00

920 Authority Obligations 299,755.00

932 Capital Reserve Fund Transfers Applicable To Fund 32 1,275,795.00

939 Other Fund Transfers 317,888.89

**Total Other Uses of Funds \$5,562,438.89**

**Total 5000 Other Expenditures and Financing Uses \$8,444,820.32**

General Fund (10)

	<u>Elementary</u>	<u>Secondary</u>	<u>Federal</u>	<u>Total</u>
<b>5100 Debt Service / Other Expenditures and Financing Uses</b>				
<b>800 Other Objects</b>				
830 Interest			278,812.20	2,882,381.43
<b>Total Other Objects</b>			<b>\$278,812.20</b>	<b>\$2,882,381.43</b>
<b>900 Other Uses of Funds</b>				
910 Redemption of Principal				3,669,000.00
920 Authority Obligations				299,755.00
<b>Total Other Uses of Funds</b>				<b>\$3,968,755.00</b>
<b>Total 5100 Debt Service / Other Expenditures and Financing Uses</b>			<b>\$278,812.20</b>	<b>\$6,851,136.43</b>

General Fund (10)

	<u>Elementary</u>	<u>Secondary</u>	<u>Federal</u>	<u>Total</u>
<b>5110 Debt Service</b>				
<b>800 Other Objects</b>				
830 Interest			278,812.20	2,882,381.43
<b>Total Other Objects</b>			<b>\$278,812.20</b>	<b>\$2,882,381.43</b>
<b>900 Other Uses of Funds</b>				
910 Redemption of Principal				3,669,000.00
920 Authority Obligations				299,755.00
<b>Total Other Uses of Funds</b>				<b>\$3,968,755.00</b>
<b>Total 5110 Debt Service</b>			<b>\$278,812.20</b>	<b>\$6,851,136.43</b>

General Fund (10)

5200 Interfund Transfers – Out

Elementary

Secondary

Federal

Total

900 Other Uses of Funds

932 Capital Reserve Fund Transfers Applicable To Fund 32

1,275,795.00

939 Other Fund Transfers

281,388.89

317,888.89

**Total Other Uses of Funds**

**\$281,388.89**

**\$1,593,683.89**

**Total 5200 Interfund Transfers – Out**

**\$281,388.89**

**\$1,593,683.89**

LEA : 125237603 Radnor Township SD

Printed 2/19/2020 9:53:37 AM

General Fund (10)

5230 Capital Projects Fund Transfers

Elementary

Secondary

Federal

Total

900 Other Uses of Funds

932 Capital Reserve Fund Transfers Applicable To Fund 32

1,275,795.00

**Total Other Uses of Funds**

**\$1,275,795.00**

**Total 5230 Capital Projects Fund Transfers**

**\$1,275,795.00**

General Fund (10)

5240 Debt Service Fund Transfers

Elementary

Secondary

Federal

Total

900 Other Uses of Funds

939 Other Fund Transfers

281,388.89

281,388.89

**Total Other Uses of Funds**

**\$281,388.89**

**\$281,388.89**

**Total 5240 Debt Service Fund Transfers**

**\$281,388.89**

**\$281,388.89**

General Fund (10)

	<u>Elementary</u>	<u>Secondary</u>	<u>Federal</u>	<u>Total</u>
<b>5280 Activity Fund Transfers</b>				
<b>900 Other Uses of Funds</b>				
939 Other Fund Transfers				36,500.00
<b>Total Other Uses of Funds</b>				<b>\$36,500.00</b>
<b>Total 5280 Activity Fund Transfers</b>				<b>\$36,500.00</b>

**Athletic / School-Sponsored Extra Curricular Activities Fund (29)**

**3000 Operation of Non-Instructional Services**

**Total**

**300 Purchased Professional and Technical Services**

330 Other Professional Services

66,884.00

**Total Purchased Professional and Technical Services**

**\$66,884.00**

**Total 3000 Operation of Non-Instructional Services**

**\$66,884.00**

LEA : 125237603 Radnor Township SD

Printed 2/19/2020 9:53:29 AM

**Athletic / School-Sponsored Extra Curricular Activities Fund (29)**

**3300 Community Services**

Elementary

Secondary

Federal

Total

**300 Purchased Professional and Technical Services**

330 Other Professional Services

66,884.00

**Total Purchased Professional and Technical Services**

**\$66,884.00**

**Total 3300 Community Services**

**\$66,884.00**

**Capital Reserve Fund - § 1431 (32)**

**2000 Support Services**

**Total**

**400 Purchased Property Services**

430 Repairs and Maintenance Services

133,460.00

**Total Purchased Property Services**

**\$133,460.00**

**700 Property**

762 Capitalized Equipment - Replacement

343,974.04

**Total Property**

**\$343,974.04**

**Total 2000 Support Services**

**\$477,434.04**

Capital Reserve Fund - § 1431 (32)

2600 Operation and Maintenance of Plant Services

Elementary

Secondary

Federal

Total

400 Purchased Property Services

430 Repairs and Maintenance Services

133,460.00

**Total Purchased Property Services**

**\$133,460.00**

700 Property

762 Capitalized Equipment - Replacement

114,542.04

**Total Property**

**\$114,542.04**

**Total 2600 Operation and Maintenance of Plant Services**

**\$248,002.04**

LEA : 125237603 Radnor Township SD

Printed 2/19/2020 9:53:21 AM

Capital Reserve Fund - § 1431 (32)

2610 Supervision of Operation and Maintenance of Plant Services

Elementary

Secondary

Federal

Total

400 Purchased Property Services

430 Repairs and Maintenance Services

133,460.00

**Total Purchased Property Services**

**\$133,460.00**

700 Property

762 Capitalized Equipment - Replacement

114,542.04

**Total Property**

**\$114,542.04**

**Total 2610 Supervision of Operation and Maintenance of Plant Services**

**\$248,002.04**

Capital Reserve Fund - § 1431 (32)

2619 Supervision of Operation and Maintenance of Plant Services – All Other Supervision

Elementary

Secondary

Federal

Total

400 Purchased Property Services

430 Repairs and Maintenance Services

133,460.00

**Total Purchased Property Services**

**\$133,460.00**

700 Property

762 Capitalized Equipment - Replacement

114,542.04

**Total Property**

**\$114,542.04**

**Total 2619 Supervision of Operation and Maintenance of Plant Services – All Other Supervision**

**\$248,002.04**

LEA : 125237603 Radnor Township SD

Printed 2/19/2020 9:53:21 AM

Capital Reserve Fund - § 1431 (32)

2700 Student Transportation Services

Elementary

Secondary

Federal

Total

700 Property

762 Capitalized Equipment - Replacement

229,432.00

**Total Property**

**\$229,432.00**

**Total 2700 Student Transportation Services**

**\$229,432.00**

LEA : 125237603 Radnor Township SD

Printed 2/19/2020 9:53:21 AM

Capital Reserve Fund - § 1431 (32)

2710 Supervision of Student Transportation Services

Elementary

Secondary

Federal

Total

700 Property

762 Capitalized Equipment - Replacement

229,432.00

**Total Property**

**\$229,432.00**

**Total 2710 Supervision of Student Transportation Services**

**\$229,432.00**

LEA : 125237603 Radnor Township SD

Printed 2/19/2020 9:53:21 AM

Capital Reserve Fund - § 1431 (32)

2719 Supervision of Student Transportation Services – All Other Supervision

Elementary

Secondary

Federal

Total

700 Property

762 Capitalized Equipment - Replacement

229,432.00

**Total Property**

**\$229,432.00**

**Total 2719 Supervision of Student Transportation Services – All Other Supervision**

**\$229,432.00**

**Capital Reserve Fund - § 1431 (32)**

**4000 Facilities Acquisition, Construction and Improvement Services**

**Total**

**400 Purchased Property Services**

430 Repairs and Maintenance Services

22,533.15

**Total Purchased Property Services**

**\$22,533.15**

**700 Property**

762 Capitalized Equipment - Replacement

127,354.30

**Total Property**

**\$127,354.30**

**Total 4000 Facilities Acquisition, Construction and Improvement Services**

**\$149,887.45**

LEA : 125237603 Radnor Township SD

Printed 2/19/2020 9:53:33 AM

Capital Reserve Fund - § 1431 (32)

4600 Existing Building Improvement Services

Elementary

Secondary

Federal

Total

400 Purchased Property Services

430 Repairs and Maintenance Services

22,533.15

**Total Purchased Property Services**

**\$22,533.15**

700 Property

762 Capitalized Equipment - Replacement

127,354.30

**Total Property**

**\$127,354.30**

**Total 4600 Existing Building Improvement Services**

**\$149,887.45**

**Other Capital Projects Fund (39)**

**2000 Support Services**

**800 Other Objects**

810 Dues and Fees

341,987.00

**Total Other Objects**

**\$341,987.00**

**Total 2000 Support Services**

**\$341,987.00**

LEA : 125237603 Radnor Township SD

Printed 2/19/2020 9:53:22 AM

Other Capital Projects Fund (39)

2300 Support Services – Administration

Elementary

Secondary

Federal

Total

800 Other Objects

810 Dues and Fees

341,987.00

**Total Other Objects**

**\$341,987.00**

**Total 2300 Support Services – Administration**

**\$341,987.00**

LEA : 125237603 Radnor Township SD

Printed 2/19/2020 9:53:22 AM

Other Capital Projects Fund (39)

2390 Other Administration Services

Elementary

Secondary

Federal

Total

800 Other Objects

810 Dues and Fees

341,987.00

**Total Other Objects**

**\$341,987.00**

**Total 2390 Other Administration Services**

**\$341,987.00**

**Other Capital Projects Fund (39)**

**5000 Other Expenditures and Financing Uses**

**Total**

**800 Other Objects**

830 Interest 238,081.00

**Total Other Objects \$238,081.00**

**900 Other Uses of Funds**

910 Redemption of Principal 18,605,000.00

990 Miscellaneous Other Uses of Funds 10,313.00

**Total Other Uses of Funds \$18,615,313.00**

**Total 5000 Other Expenditures and Financing Uses \$18,853,394.00**

Other Capital Projects Fund (39)

5100 Debt Service / Other Expenditures and Financing Uses	<u>Elementary</u>	<u>Secondary</u>	<u>Federal</u>	<u>Total</u>
<b>800 Other Objects</b>				
830 Interest				238,081.00
<b>Total Other Objects</b>				<b>\$238,081.00</b>
<b>900 Other Uses of Funds</b>				
910 Redemption of Principal				18,605,000.00
990 Miscellaneous Other Uses of Funds				10,313.00
<b>Total Other Uses of Funds</b>				<b>\$18,615,313.00</b>
<b>Total 5100 Debt Service / Other Expenditures and Financing Uses</b>				<b>\$18,853,394.00</b>

Other Capital Projects Fund (39)

	<u>Elementary</u>	<u>Secondary</u>	<u>Federal</u>	<u>Total</u>
<b>5120 Debt Service – Refunded Bonds</b>				
<b>800 Other Objects</b>				
830 Interest				238,081.00
<b>Total Other Objects</b>				<b>\$238,081.00</b>
<b>900 Other Uses of Funds</b>				
910 Redemption of Principal				18,605,000.00
<b>Total Other Uses of Funds</b>				<b>\$18,605,000.00</b>
<b>Total 5120 Debt Service – Refunded Bonds</b>				<b>\$18,843,081.00</b>

LEA : 125237603 Radnor Township SD

Printed 2/19/2020 9:53:39 AM

Other Capital Projects Fund (39)

5150 Bond Discounts

Elementary

Secondary

Federal

Total

900 Other Uses of Funds

990 Miscellaneous Other Uses of Funds

10,313.00

**Total Other Uses of Funds**

**\$10,313.00**

**Total 5150 Bond Discounts**

**\$10,313.00**

	<u>General Fund(10)</u>	<u>Public Purpose Trust(27)</u>	<u>Other Compt Approved (28)</u>	<u>Athletic / Activity(29)</u>	<u>Capital Reserve (690. 1850)(31)</u>
<b>1000 Instruction</b>					
1100 Regular Programs - Elementary / Secondary	39,648,963.30				
1200 Special Programs - Elementary / Secondary	15,720,224.60				
1300 Vocational Education	228,753.70				
1400 Other Instructional Programs - Elementary / Secondary	3,537.67				
1600 Adult Education Programs	1,148,553.00				
<b>Total Instruction</b>	<b>\$56,750,032.27</b>				
<b>2000 Support Services</b>					
2100 Support Services - Students	4,218,835.18				
2200 Support Services - Instructional Staff	4,311,037.83				
2300 Support Services - Administration	5,716,641.22				
2400 Support Services - Pupil Health	1,131,894.31				
2500 Support Services - Business	1,055,154.77				
2600 Operation and Maintenance of Plant Services	8,441,535.29				
2700 Student Transportation Services	4,600,920.29				
2800 Support Services - Central	1,884,256.55				
2900 Other Support Services	80,986.58				
<b>Total Support Services</b>	<b>\$31,441,262.02</b>				
<b>3000 Operation of Non-Instructional Services</b>					
3200 Student Activities	1,393,232.00				
3300 Community Services	6,295.78			66,884.00	
<b>Total Operation of Non-Instructional Services</b>	<b>\$1,399,527.78</b>			<b>\$66,884.00</b>	
<b>4000 Facilities Acquisition, Construction and Improvement Services</b>					
4600 Existing Building Improvement Services					
<b>Total Facilities Acquisition, Construction and Improvement</b>					
<b>5000 Other Expenditures and Financing Uses</b>					
5100 Debt Service / Other Expenditures and Financing Uses	6,851,136.43				
5200 Interfund Transfers - Out	1,593,683.89				
<b>Total Other Expenditures and Financing Uses</b>	<b>\$8,444,820.32</b>				
<b>TOTAL ACTUAL EXPENDITURES &amp; OTHER FINANCING USES</b>	<b>\$98,035,642.39</b>			<b>\$66,884.00</b>	

	<u>Capital Reserve (1431)(32)</u>	<u>Other Capital Projects Fund(39)</u>	<u>Debt Service(40)</u>	<u>Permanent(90)</u>	<u>Total</u>
<b>1000 Instruction</b>					
1100 Regular Programs - Elementary / Secondary					39,648,963.30
1200 Special Programs - Elementary / Secondary					15,720,224.60
1300 Vocational Education					228,753.70
1400 Other Instructional Programs - Elementary / Secondary					3,537.67
1600 Adult Education Programs					1,148,553.00
<b>Total Instruction</b>					<b>\$56,750,032.27</b>
<b>2000 Support Services</b>					
2100 Support Services - Students					4,218,835.18
2200 Support Services - Instructional Staff					4,311,037.83
2300 Support Services - Administration		341,987.00			6,058,628.22
2400 Support Services - Pupil Health					1,131,894.31
2500 Support Services - Business					1,055,154.77
2600 Operation and Maintenance of Plant Services	248,002.04				8,689,537.33
2700 Student Transportation Services	229,432.00				4,830,352.29
2800 Support Services - Central					1,884,256.55
2900 Other Support Services					80,986.58
<b>Total Support Services</b>	<b>\$477,434.04</b>	<b>\$341,987.00</b>			<b>\$32,260,683.06</b>
<b>3000 Operation of Non-Instructional Services</b>					
3200 Student Activities					1,393,232.00
3300 Community Services					73,179.78
<b>Total Operation of Non-Instructional Services</b>					<b>\$1,466,411.78</b>
<b>4000 Facilities Acquisition, Construction and Improvement Services</b>					
4600 Existing Building Improvement Services	149,887.45				149,887.45
<b>Total Facilities Acquisition, Construction and Improvement</b>	<b>\$149,887.45</b>				<b>\$149,887.45</b>
<b>5000 Other Expenditures and Financing Uses</b>					
5100 Debt Service / Other Expenditures and Financing Uses		18,853,394.00			25,704,530.43
5200 Interfund Transfers - Out					1,593,683.89
<b>Total Other Expenditures and Financing Uses</b>		<b>\$18,853,394.00</b>			<b>\$27,298,214.32</b>
<b>TOTAL ACTUAL EXPENDITURES &amp; OTHER FINANCING USES</b>	<b>\$627,321.49</b>	<b>\$19,195,381.00</b>			<b>\$117,925,228.88</b>

LEA : 125237603 Radnor Township SD

Printed 2/19/2020 9:54:02 AM

**PSERS Salary Data (Salary Data should relate to the General Fund only)**

<b>Amount Description</b>	<b>Amount</b>
Total Salary Base for salaries subject to PSERS withholding	14,347,277.96
Total Federally Funded salaries subject to PSERS withholding	245,854.77
	<hr/>

**Title I Expenditure Data**

<b>Amount Description</b>	<b>Amount</b>
Expenditures Funded with Current Title I Funds	136,263.81
Expenditures Funded with Carry over Title I Funds	157,365.41
	<hr/>
<b>Total Title I Expenditure Data</b>	<b>\$293,629.22</b>
	<hr/>

**Benefits for Staff Relative to Collective Bargaining Agreements**

	OBJECT	COVERED	NOT COVERED	TOTAL
<b>10 General Fund</b>				
	211 Medical Insurance	7,326,691.09		7,326,691.09
	212 Dental Insurance	418,738.53		418,738.53
	215 Eye Care Insurance			
	216 Prescription Insurance			
	271 Self-Insurance Medical Benefits			
	272 Self-Insurance Dental Benefits			
	275 Self-Insurance Eye Care Benefits	28,274.90		28,274.90
	276 Self-Insurance Prescription Benefits	1,856,494.45		1,856,494.45
	<b>FUND TOTAL</b>	<b>\$9,630,198.97</b>		<b>\$9,630,198.97</b>
<b>50 Enterprise Fund</b>				
	211 Medical Insurance	105,160.10		105,160.10
	212 Dental Insurance	4,404.11		4,404.11
	215 Eye Care Insurance			
	216 Prescription Insurance			
	271 Self-Insurance Medical Benefits			
	272 Self-Insurance Dental Benefits			
	275 Self-Insurance Eye Care Benefits	1,133.26		1,133.26
	276 Self-Insurance Prescription Benefits	25,158.89		25,158.89
	<b>FUND TOTAL</b>	<b>\$135,856.36</b>		<b>\$135,856.36</b>
<b>60 Internal Service Fund</b>	No Self Insurance data to report			
	211 Medical Insurance			
	212 Dental Insurance			
	215 Eye Care Insurance			
	216 Prescription Insurance			
	271 Self-Insurance Medical Benefits			
	272 Self-Insurance Dental Benefits			
	275 Self-Insurance Eye Care Benefits			
	276 Self-Insurance Prescription Benefits			
	<b>FUND TOTAL</b>			
<b>Total of All Funds</b>		<b>\$9,766,055.33</b>		<b>\$9,766,055.33</b>

LEA : 125237603 Radnor Township SD

Printed 2/19/2020 9:54:09 AM

Function	Special Education (Prior Year)	Nonspecial Education (Prior Year)	Total (Prior Year)	Special Education (Current Year)	Nonspecial Education (Current Year)	Total (Current Year)
2120 Guidance Services	231,097.01	1,306,886.06	1,537,983.07	259,856.23	1,452,738.06	1,712,594.29
2140 Psychological Services	150,086.06	1,005,091.33	1,155,177.39	151,936.46	1,053,908.47	1,205,844.93
2150 Speech Pathology and Audiology Services						
2160 Social Work Services	30,263.74	202,534.26	232,798.00	29,308.42	203,298.05	232,606.47
2260 Instruction and Curriculum Development Services	219,462.79	958,528.29	1,177,991.08	232,194.24	1,016,575.81	1,248,770.05
2350 Legal and Accounting Services	220,899.80	133,562.41	354,462.21	134,617.67	134,588.12	269,205.79
2420 Medical Services	715.00	4,785.00	5,500.00	869.95	6,034.38	6,904.33
2440 Nursing Services	339,505.86	619,909.30	959,415.16	386,995.45	733,779.16	1,120,774.61
2700 Student Transportation Services	737,527.27	3,852,781.14	4,590,308.41	651,821.39	3,949,098.90	4,600,920.29
<b>Total</b>	<b>\$1,929,557.53</b>	<b>\$8,084,077.79</b>	<b>\$10,013,635.32</b>	<b>\$1,847,599.81</b>	<b>\$8,550,020.95</b>	<b>\$10,397,620.76</b>

(PRINCIPAL AMOUNTS ONLY)

**GOVERNMENTAL FUNDS/ ACTIVITIES**

	<b>Short-Term Borrowing</b>	<b>General Obligation Bonds/Notes</b>	<b>Authority Building Obligations</b>	<b>Other Long-Term Debt</b>	<b>Other Post-Employment Benefits (OPEB)</b>	<b>Compensated Absences</b>	<b>Net Pension Liability</b>	<b>Total</b>
1. Debt at Beginning of Fiscal Year		83,695,000.00	8,064,276.00	294,789.00	3,665,375.00	673,671.00	160,677,874.00	257,070,985.00
2. Additional Debt Incurred During Year		19,155,000.00					34,943.00	19,189,943.00
3. Retirements and Repayments		22,274,000.00	299,755.00	40,763.00	442,857.00	144,212.00	6,937,033.00	30,138,620.00
4. Debt at End of Fiscal Year		80,576,000.00	7,764,521.00	254,026.00	3,222,518.00	529,459.00	153,775,784.00	246,122,308.00
5. Accreted Interest at End Of Fiscal Year								
6. Total Debt and Accreted Interest		80,576,000.00	7,764,521.00	254,026.00	3,222,518.00	529,459.00	153,775,784.00	246,122,308.00
7. Current Portion P&I - Due within 1 year		5,963,833.00	577,244.28	34,602.00		20,489.00		6,596,168.28
8. Interest Paid during current fiscal year		2,811,628.84	398,409.70					3,210,038.54

(PRINCIPAL AMOUNTS ONLY)

**PROPRIETARY FUNDS**

	<b>Short-Term Borrowing</b>	<b>General Obligation Bonds/Notes</b>	<b>Authority Building Obligations</b>	<b>Other Long-Term Debt</b>	<b>Other Post-Employment Benefits (OPEB)</b>	<b>Compensated Absences</b>	<b>Net Pension Liability</b>	<b>Total</b>
1. Debt at Beginning of Fiscal Year					103,026.00		1,570,100.00	1,673,126.00
2. Additional Debt Incurred During Year					569.00			569.00
3. Retirements and Repayments							70,566.00	70,566.00
4. Debt at End of Fiscal Year					103,595.00		1,499,534.00	1,603,129.00
5. Accreted Interest at End Of Fiscal Year								
6. Total Debt and Accreted Interest					103,595.00		1,499,534.00	1,603,129.00
7. Current Portion P&I - Due within 1 year								
8. Interest Paid during current fiscal year								

**Total Principal and Interest Payments Made by Your School - All Funds**

Function	Fund		Principal (910)	Principal (920)	Interest (830)	Total (Principal +Interest)	Misc Other Uses (990)
5110	10	General Fund	3,669,000.00	299,755.00	2,882,381.43	6,851,136.43	
5110	20	Special Revenue Funds					
5110	30	Capital Projects Funds					
5110	40	Debt Service Fund					
5110	90	Permanent Fund					
5120	10	General Fund					
5120	20	Special Revenue Funds					
5120	30	Capital Projects Funds	18,605,000.00		238,081.00	18,843,081.00	
5120	40	Debt Service Fund					

<b>Total Debt Payments - Governmental Funds</b>			<b>\$22,274,000.00</b>	<b>\$299,755.00</b>	<b>\$3,120,462.43</b>	<b>\$25,694,217.43</b>	
---	--	--	------------------------	---------------------	-----------------------	------------------------	--

Function	Fund		Principal (910)	Principal (920)	Interest (830)	Total (Principal +Interest)
5110	50	Enterprise Fund				
5110	60	Internal Service Fund				
5120	50	Enterprise Fund				
5120	60	Internal Service Fund				

<b>Total Debt Payments - Proprietary Funds</b>							
--	--	--	--	--	--	--	--

**Debt Details**  
**Governmental Funds/ Activities**

Debt Category	Debt Issue Date (MM/YYYY)	Principal Amounts Only			Debt at End of Fiscal Year	Current Portion Due Within One Year (Principal and Interest)	Interest Paid During Fiscal Year
		Debt at Beginning of Fiscal Year	Additions	Reductions / Repayments			
General Obligation Bonds/Notes – CIB	05/2019		9,210,000.00		9,210,000.00	186,181.00	114,278.80
General Obligation Bonds/Notes – CIB	05/2019		9,945,000.00		9,945,000.00	196,355.00	123,802.04
General Obligation Bonds/Notes – CIB	11/2017	9,810,000.00		1,000.00	9,809,000.00	214,010.00	195,209.00
General Obligation Bonds/Notes – CIB	11/2017	5,035,000.00		978,000.00	4,057,000.00	1,106,854.00	79,555.00
General Obligation Bonds/Notes – CIB	01/2015	11,100,000.00		695,000.00	10,405,000.00	1,124,500.00	435,625.00
General Obligation Bonds/Notes – CIB	04/2015	3,260,000.00		410,000.00	2,850,000.00	489,313.00	81,612.00
General Obligation Bonds/Notes – CIB	10/2014	5,660,000.00		90,000.00	5,570,000.00	248,628.00	164,978.00
General Obligation Bonds/Notes – CIB	11/2014	8,860,000.00		10,000.00	8,850,000.00	297,500.00	287,700.00
General Obligation Bonds/Notes – CIB	06/2014	11,525,000.00		1,220,000.00	10,305,000.00	1,698,941.00	477,641.00
General Obligation Bonds/Notes – CIB	06/2014	9,000,000.00		9,000,000.00			303,599.00
General Obligation Bonds/Notes – CIB	05/2013	9,730,000.00		6,460,000.00	3,270,000.00	195,776.00	287,484.00
General Obligation Bonds/Notes – CIB	10/2012	9,715,000.00		3,410,000.00	6,305,000.00	205,775.00	260,145.00
Authority Building Obligations – CIB	07/2014	1,148,642.00		76,054.10	1,072,587.90	89,651.74	42,026.19
Authority Building Obligations – CIB	11/2011	3,565,000.00			3,565,000.00	181,388.00	181,387.00
Authority Building Obligations – CIB	11/2010	1,416,667.00			1,416,667.00	97,425.00	97,425.00
Authority Building Obligations – CIB	08/2008	1,933,967.00		223,700.90	1,710,266.10	208,779.54	77,571.51
Other Long Term Debt/Liabilities		294,789.00		40,763.00	254,026.00	34,602.00	
Compensated Absences		673,671.00		144,212.00	529,459.00	20,489.00	
Other Post-Employment Benefits (OPEB)		3,665,375.00		442,857.00	3,222,518.00		
Net Pension Liability		160,677,874.00	34,943.00	6,937,033.00	153,775,784.00		
<b>Totals for Debt Entered:</b>		<b>\$257,070,985.00</b>	<b>\$19,189,943.00</b>	<b>\$30,138,620.00</b>	<b>\$246,122,308.00</b>	<b>\$6,596,168.28</b>	<b>\$3,210,038.54</b>

**Bond Details**  
**Proprietary Funds**

Debt Category	Debt Issue Date (MM/YYYY)	Principal Amounts Only			Debt at End of Fiscal Year	Current Portion Due Within One Year (Principal and Interest)	Interest Paid During Fiscal Year
		Debt at Beginning of Fiscal Year	Additions	Reductions / Repayments			
Other Post-Employment Benefits (OPEB)		103,026.00	569.00		103,595.00		
Net Pension Liability		1,570,100.00		70,566.00	1,499,534.00		
<b>Totals for Debt Entered:</b>		<b>\$1,673,126.00</b>	<b>\$569.00</b>	<b>\$70,566.00</b>	<b>\$1,603,129.00</b>		

**General Fund (10)**

**Section 1: Tuition/Purchased Services as Reported within Expenditure Detail**

	Amount
Tuition Reported in General Fund Expenditures 1000-560	6,852,165.43
Purchased Services in General Fund Expenditures 1000-594 and 1000-597	

<b>Section 1 Total</b>	<b>\$6,852,165.43</b>
------------------------	-----------------------

**Section 2: Tuition Paid to Institution Types During Fiscal Year**

	Tuition Paid For Nonspecial Education	Tuition Paid For Special Education	Total
1 1306 Institutions			
2 Institutionalized Children's Programs			
3 Juveniles Incarcerated in Adult Facilities			
4 Residential Treatment Facilities		1,385,551.87	1,385,551.87
5 Other Local Education Agencies	888.60	972,938.10	973,826.70
6 Brick and Mortar Charter Schools	93,141.63	147,170.28	240,311.91
7 Cyber Charter Schools	59,504.09	143,632.00	203,136.09
8 Career and Technology Centers	94,874.77	133,878.93	228,753.70
9 Approved Private Schools		1,393,686.41	1,393,686.41
10 PA Chartered Schools for the Deaf and Blind			
11 Private Residential Rehabilitative Institutions			
12 Juvenile Detention Centers			
13 Special Program Jointures	1,148,553.00		1,148,553.00
14 Other Tuition Not Included Elsewhere In This Section		1,278,345.75	1,278,345.75

<b>Section 2 Total</b>	<b>\$1,396,962.09</b>	<b>\$5,455,203.34</b>	<b>\$6,852,165.43</b>
------------------------	-----------------------	-----------------------	-----------------------

**Food Service / Cafeteria Operations Fund (51)**

**3000 Operation of Non-Instructional Services**

**Total**

**100 Personnel Services – Salaries**

100 Personnel Services – Salaries 473,582.41

**Total Personnel Services – Salaries \$473,582.41**

**200 Personnel Services – Employee Benefits**

210 Group Insurance – Contracted Provider 110,305.75

220 Social Security Contributions 35,528.94

230 PSERS Retirement Contributions 178,898.65

250 Unemployment Compensation 1,391.08

260 Workers' Compensation 4,280.67

270 Group Insurance – Self-Insurance 26,292.15

292 Health Savings Accounts 3,750.00

**Total Personnel Services – Employee Benefits \$360,447.24**

**300 Purchased Professional and Technical Services**

330 Other Professional Services 51,494.86

**Total Purchased Professional and Technical Services \$51,494.86**

**400 Purchased Property Services**

430 Repairs and Maintenance Services 24,107.00

**Total Purchased Property Services \$24,107.00**

**500 Other Purchased Services**

580 Travel 835.95

591 Services Purchased Locally 52,463.78

**Total Other Purchased Services \$53,299.73**

**600 Supplies**

610 General Supplies 63,384.56

630 Food 827,154.68

**Total Supplies \$890,539.24**

**700 Property**

740 Depreciation 21,489.00

**Total Property \$21,489.00**

**Total 3000 Operation of Non-Instructional Services \$1,874,959.48**

**Food Service / Cafeteria Operations Fund (51)**

	<u>Elementary</u>	<u>Secondary</u>	<u>Federal</u>	<u>Total</u>
<b>3100 Food Services</b>				
<b>100 Personnel Services – Salaries</b>				
100 Personnel Services – Salaries				473,582.41
<b>Total Personnel Services – Salaries</b>				<b>\$473,582.41</b>
<b>200 Personnel Services – Employee Benefits</b>				
210 Group Insurance – Contracted Provider				110,305.75
220 Social Security Contributions				35,528.94
230 PSERS Retirement Contributions				178,898.65
250 Unemployment Compensation				1,391.08
260 Workers' Compensation				4,280.67
270 Group Insurance – Self-Insurance				26,292.15
292 Health Savings Accounts				3,750.00
<b>Total Personnel Services – Employee Benefits</b>				<b>\$360,447.24</b>
<b>300 Purchased Professional and Technical Services</b>				
330 Other Professional Services				51,494.86
<b>Total Purchased Professional and Technical Services</b>				<b>\$51,494.86</b>
<b>400 Purchased Property Services</b>				
430 Repairs and Maintenance Services				24,107.00
<b>Total Purchased Property Services</b>				<b>\$24,107.00</b>
<b>500 Other Purchased Services</b>				
580 Travel				835.95
591 Services Purchased Locally				52,463.78
<b>Total Other Purchased Services</b>				<b>\$53,299.73</b>
<b>600 Supplies</b>				
610 General Supplies				63,384.56
630 Food				827,154.68
<b>Total Supplies</b>				<b>\$890,539.24</b>
<b>700 Property</b>				
740 Depreciation				21,489.00
<b>Total Property</b>				<b>\$21,489.00</b>
<b>Total 3100 Food Services</b>				<b>\$1,874,959.48</b>

**Internal Service Fund (60)**

**3000 Operation of Non-Instructional Services**

**Total**

**200 Personnel Services – Employee Benefits**

210 Group Insurance – Contracted Provider

8,199,980.00

**Total Personnel Services – Employee Benefits**

**\$8,199,980.00**

**300 Purchased Professional and Technical Services**

310 Official / Administrative Services

275,243.00

**Total Purchased Professional and Technical Services**

**\$275,243.00**

**Total 3000 Operation of Non-Instructional Services**

**\$8,475,223.00**

Internal Service Fund (60)

3100 Food Services

Elementary

Secondary

Federal

Total

200 Personnel Services – Employee Benefits

210 Group Insurance – Contracted Provider

8,199,980.00

**Total Personnel Services – Employee Benefits**

**\$8,199,980.00**

300 Purchased Professional and Technical Services

310 Official / Administrative Services

275,243.00

**Total Purchased Professional and Technical Services**

**\$275,243.00**

**Total 3100 Food Services**

**\$8,475,223.00**

	<u>Food Service(51)</u>	<u>Child Care Operations(52)</u>	<u>Other Enterprise(58)</u>	<u>Internal Service(60)</u>	<u>Total</u>
<b>3000 <u>Operation of Non-Instructional Services</u></b>					
3100 Food Services	1,874,959.48			8,475,223.00	10,350,182.48
<b>Total Operation of Non-Instructional Services</b>	<b>\$1,874,959.48</b>			<b>\$8,475,223.00</b>	<b>\$10,350,182.48</b>
<b>TOTAL ACTUAL EXPENDITURES &amp; OTHER FINANCING USES</b>	<b>\$1,874,959.48</b>			<b>\$8,475,223.00</b>	<b>\$10,350,182.48</b>

LEA : 125237603 Radnor Township SD

Printed 2/19/2020 9:54:41 AM

Fund	School	School Number	Local Personnel	Local Nonpersonnel	State Personnel	State Nonpersonnel	Federal Personnel	Federal Nonpersonnel	Total	Explanation
10										
	Ithan El Sch	6510	7,149,996.57	1,234,199.07	1,332,594.04	230,026.18	44,717.84	44,482.36	10,036,016.06	
	Radnor El Sch	7697	9,261,519.61	1,843,295.99	1,726,133.12	343,547.75	63,048.13	62,716.13	13,300,260.73	
	Radnor MS	6511	14,103,593.13	10,596,365.50	2,628,583.65	1,974,917.52	92,197.05	250,637.17	29,646,294.02	
	Radnor SHS	1921	19,730,061.29	3,447,645.95	3,677,227.23	642,561.49	142,930.55	67,074.46	27,707,500.97	
	Wayne El Sch	6512	9,147,316.16	1,636,463.39	1,704,848.24	304,998.94	58,415.20	58,107.59	12,910,149.52	
<b>Total</b>			<b>59,392,486.76</b>	<b>18,757,969.90</b>	<b>11,069,386.28</b>	<b>3,496,051.88</b>	<b>401,308.77</b>	<b>483,017.71</b>	<b>93,600,221.30</b>	