

LEA Name : Radnor Township SD
Address : 135 S Wayne Ave
Wayne , PA 19087

County : Delaware
AUN Number : 125237603
LEA Type : SD

Annual Financial Report Accuracy Certification Statement

For Fiscal Year Ending
6/30/2022

Pennsylvania Department of Education
&
Office of Comptroller Operations

PDE-2056: Intermediate Unit
PDE-2057: School District, AVTS/CTC, Charter School,
and Special Program Jointure

CERTIFICATION: By signing this page I agree that the electronic data submitted is a complete and accurate statement of the financial operations and status of the local education agency for the fiscal year. It has been prepared in accordance with generally accepted accounting principles and established Commonwealth of PA reporting guidelines.



Chief School Administrator Signature

2/9/23

Date



Board Secretary Signature

2/7/23

Date

Melissa J Klaus

Contact Person

(610)386-6108 Ext :

Contact Person Telephone Number

melissa.klaus@rtsd.org

Contact Person E-mail Address

Contact Person Fax Number

Audit Certification
Annual Financial Report:
For Fiscal Year Ending **6/30/2022**
(Pursuant to PA School Code Section 218(b))

LEA Name : Radnor Township SD
AUN Number : 125237603
County : Delaware

Audit Certification Due: 12/31/2022

This certification is applicable to the Annual Financial Report data submitted through the Consolidated Financial Reporting System (CFRS).

CERTIFICATION: By signing this page I agree that the financial statements of the school have been properly audited as noted above pursuant to Article XXIV, and in the auditor's professional opinion, the Annual Financial Report (PDE-2057) submitted through CFRS is materially consistent with the audited financial statements.

Chief School Administrator



Signature

2/7/23

Date

Board Secretary



Signature

2/7/23

Date

Melissa J Klaus

Contact Person

melissa.klaus@rtsd.org

Contact Person E-mail Address

(610)386-6108 Ext :

Contact Person Telephone Number

Contact Person Fax Number



No. 008-AR

RADNOR TOWNSHIP
SCHOOL DISTRICT

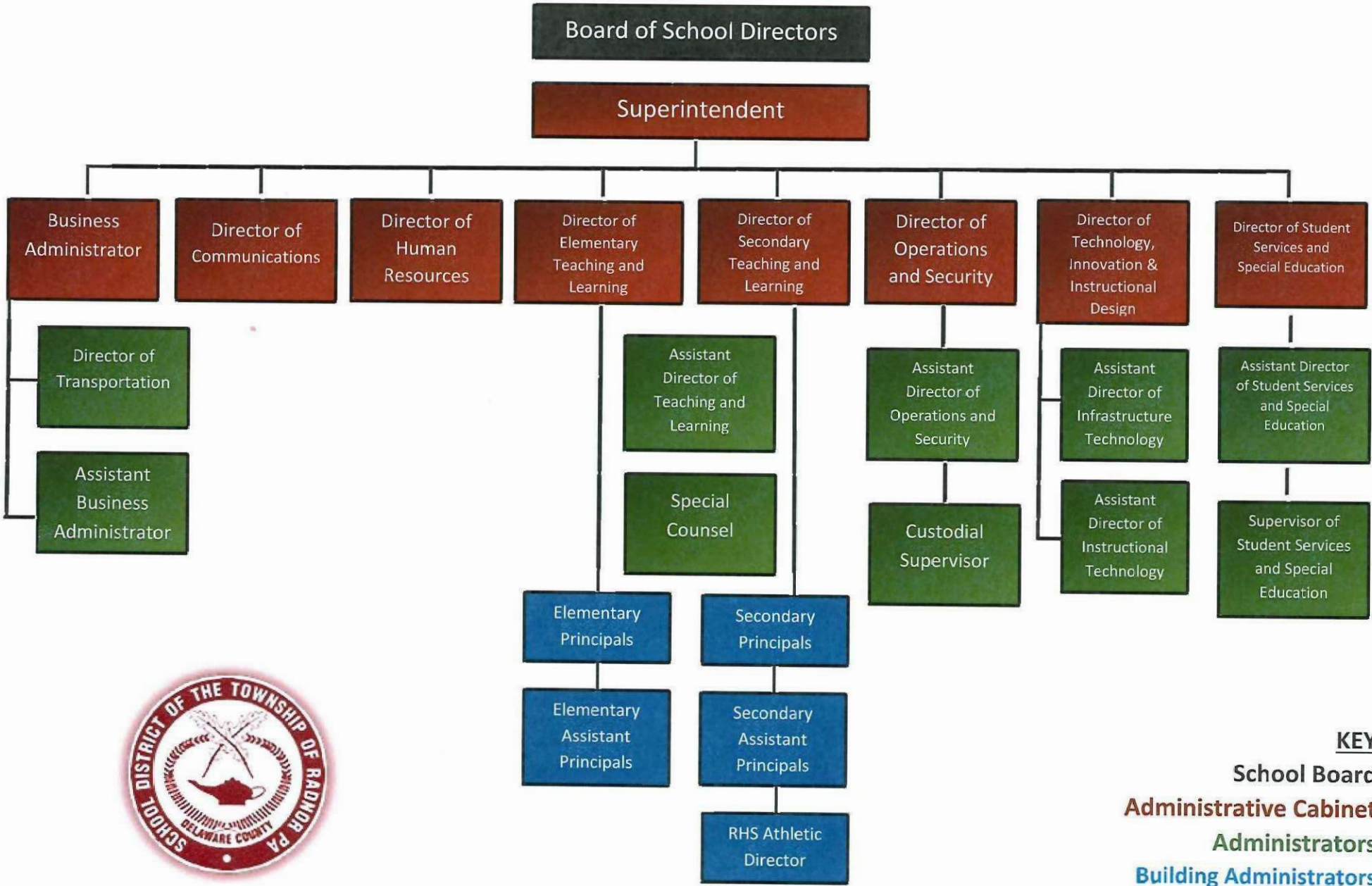
ADMINISTRATIVE
REGULATION

IMPLEMENTATION DATE:
September 24, 2019

008-AR. ADMINISTRATIVE ORGANIZATIONAL CHART

The following Administrative Organizational Chart has been approved by the Board for the purposes set forth in Policy 008. It may only be amended by formal action by the Board.

Radnor Township School District Administrative Organizational Chart 2021-2022



KEY
 School Board
 Administrative Cabinet
 Administrators
 Building Administrators



Book	Radnor Township School District Policy Manual
Section	600 Finances
Title	Capital Asset Management
Code	622
Status	Active
Adopted	August 26, 2008
Last Revised	June 25, 2013

Definition

In accordance with Governmental Accounting Standards Board Statement number 34, Capital Assets includes land, improvements to land, easements, buildings, building improvement, vehicles, machinery, equipment, works of art and historical treasures, and infrastructures. Capital assets are both tangible and intangible assets used in operations and have initial useful lives extending beyond a single reporting period. Equipment will not change its original shape, appearance or character with use and it can be expected to last more than one year with reasonable care and maintenance.

Guidelines

PURCHASED CAPITAL ASSETS

Purchased capital assets greater than \$5,000 shall be tagged and recorded electronically at their historical/original cost within the District's Capital Management Module. The cost of capital assets shall include capitalized interest and ancillary charges necessary to place the asset into service. Ancillary charges include freight, site preparation and professional fees. Electronic and related equipment less than \$5,000 shall be defined as critical to inventory control and as such will be recorded in the capital management system at original cost.

Capital assets shall be depreciated over their useful lives as determined for each asset class. Inexhaustible capital assets such as land and land improvements shall not be depreciated.

If determining historical costs is not practical due to inadequate records, reporting shall be based on estimates of original cost at the date of construction or purchase.

Capital asset records must include the acquisition date, cost, useful life, depreciation method and salvage value for capital asset classifications and groups.

Individual items less than \$5,000 but purchased in the aggregate totaling \$10,000 or more, shall be capitalized and depreciated as a unit over the useful life for that asset class.

Due to ongoing changes in technology - software, hardware and related equipment in excess of \$250 but below the asset threshold of \$5,000 as listed above shall be considered a supply but shall be tracked in the District's capital asset system for inventory purposes. Change in limit to be updated from time to time via Administrative Regulation as situation warrants.

<u>Val Number</u>	<u>Description</u>	<u>Justification</u>
12045	REG - Athletic Fund 29: Local Revenue (6000) must exceed total of all other funding sources (7000, 8000, and 9000). Correct or enter a justification. REG 6000, Fund 29 : \$14,784.21 REG 7000, 8000, 9000 - Fund 29: \$25,000.00	Pool was closed due to COVID so there was not enough rental income received. A transfer was made from the General Fund to cover the Cost
30118	Revenue Detail - Fund 40: A negative amount has been reported in account 6500 Earnings on Investments. Please correct or enter an explanation. REV Detail 6500, Fund 40: \$-353,932.00	Due to the recognition of unrealized losses on the debt sinking funds, the US Treasuries saw a reduction in value due to changes in the rates during the year.
42420	Expenditure Detail: Total current year 2700-513 expenditure varies from prior year by 10%. Correct the data or enter a justification. 2700-513, AFR Exp Detail: \$15,540.58 2700-513, PY AFR Amount: \$13,243.50	Increase in student need
50290	SOIN: Current Year AFR amount must equal Prior Year AFR amount. SOIN, Beg Bal, Auth Bldg Obl: \$5,065,000.00 PY Ending Bal, Auth Bldg Obl: \$4,981,667.00	The ending balance on a Obligation Bond was decreased last year by the interest in the amount of \$83,333.00. It Should not have been and the beginning balance was corrected the beginning and ending balances on the obligation bonds should stay the same.
50450	SESS - 2350 Legal and Accounting Services: SESS Schedule amounts for Special Education vary from prior year by 40% or more. Correct the data or enter a justification. SESS Schedule 2350: \$203,078.00 Prior Year SESS Schedule 2350: \$108,504.33	Data is correct, current year had additional settlement agreements.

Amounts Expressed in Whole Dollars

	<u>General Fund</u> <u>(10)</u>	<u>Student Sponsored</u> <u>Activity Fund</u> <u>(21)</u>	<u>Public Purpose Trust</u> <u>(27)</u>	<u>Other Compt Approved</u> <u>(28)</u>	<u>Athletic / Activity</u> <u>(29)</u>
Assets And Deferred Outflows Of Resources					
Assets					
0100 Cash and Cash Equivalents	37,676,948				9,157
0110 Investments					
0120 Taxes Receivable	1,001,703				
0130 Due From Other Funds	37				
0141 Due From Other Governments	5,502,901				
0142 State Revenue Receivable					
0143 Federal Revenue Receivable					
0145 Other Intergovernmental Revenue Receivable					
0146 Due from Primary Government					
0147 Due from Component Unit					
0150 Other Receivables	1,289,912				720
0170 Inventories					
0180 Prepaid Expenses (Expenditures)					
0190 Other Current Assets					
Total Assets	\$45,471,501				\$9,877
0910 Deferred Outflows of Resources					
Total Assets And Deferred Outflows Of Resources	\$45,471,501				\$9,877

Amounts Expressed in Whole Dollars

<u>Capital Reserve (690.</u>	<u>Capital Reserve (1431)</u>	<u>Other Capital Projects</u>	<u>Debt Service</u>	<u>Permanent</u>
<u>1850)</u>	<u>(32)</u>	<u>Fund</u>	<u>(40)</u>	<u>(90)</u>
<u>(31)</u>		<u>(39)</u>		

Assets And Deferred Outflows Of Resources

Assets				
0100 Cash and Cash Equivalents		8,269,669	8,437,220	853
0110 Investments				2,790,061
0120 Taxes Receivable				
0130 Due From Other Funds				
0141 Due From Other Governments				
0142 State Revenue Receivable				
0143 Federal Revenue Receivable				
0145 Other Intergovernmental Revenue Receivable				
0146 Due from Primary Government				
0147 Due from Component Unit				
0150 Other Receivables				
0170 Inventories				
0180 Prepaid Expenses (Expenditures)				
0190 Other Current Assets				
Total Assets		\$8,269,669	\$8,437,220	\$2,790,914
0910 Deferred Outflows of Resources				
Total Assets And Deferred Outflows Of Resources		\$8,269,669	\$8,437,220	\$2,790,914

Amounts Expressed in Whole Dollars

Total Governmental Funds

Assets And Deferred Outflows Of Resources

Assets	
0100 Cash and Cash Equivalents	54,393,847
0110 Investments	2,790,061
0120 Taxes Receivable	1,001,703
0130 Due From Other Funds	37
0141 Due From Other Governments	5,502,901
0142 State Revenue Receivable	
0143 Federal Revenue Receivable	
0145 Other Intergovernmental Revenue Receivable	
0146 Due from Primary Government	
0147 Due from Component Unit	
0150 Other Receivables	1,290,632
0170 Inventories	
0180 Prepaid Expenses (Expenditures)	
0190 Other Current Assets	
Total Assets	\$64,979,181
0910 Deferred Outflows of Resources	
Total Assets And Deferred Outflows Of Resources	\$64,979,181

Amounts Expressed in Whole Dollars

	<u>General Fund</u> <u>(10)</u>	<u>Student Sponsored</u> <u>Activity Fund</u> <u>(21)</u>	<u>Public Purpose Trust</u> <u>(27)</u>	<u>Other Compt Approved</u> <u>(28)</u>	<u>Athletic / Activity</u> <u>(29)</u>
Liabilities And Deferred Inflows Of Resources And Fund Balances					
Liabilities					
0400 Due to Other Funds					
0411 Due to Other Governments					
0412 Due to Primary Government					
0413 Due to Component Unit					
0420 Accounts Payable	1,553,410				
0430 Contracts Payable					
0440 Current Portion of Long-Term Debt					
0450 Short-Term Payables					
0461 Accrued Salaries and Benefits	11,383,595				
0462 Payroll Deductions and Withholding					
0480 Unearned Revenues					
0490 Other Current Liabilities	480,033				
Total Liabilities	\$13,417,038				
0950 Deferred Inflows of Resources	733,114				
Fund Balances					
0810 Nonspendable Fund Balance					
0820 Restricted Fund Balance					
0830 Committed Fund Balance	22,485,473				9,877
0840 Assigned Fund Balance					
0850 Unassigned Fund Balance	8,835,876				
Total Fund Balances	\$31,321,349				\$9,877
Total Liabilities, Deferred Inflows Of Resources And Fund Balances	\$45,471,501				\$9,877

Amounts Expressed in Whole Dollars

<u>Capital Reserve (690.</u>	<u>Capital Reserve (1431)</u>	<u>Other Capital Projects</u>	<u>Debt Service</u>	<u>Permanent</u>
<u>1850)</u>	<u>(32)</u>	<u>Fund</u>	<u>(40)</u>	<u>(90)</u>
<u>(31)</u>		<u>(39)</u>		

Liabilities And Deferred Inflows Of Resources And Fund Balances

Liabilities

0400 Due to Other Funds				
0411 Due to Other Governments				
0412 Due to Primary Government				
0413 Due to Component Unit				
0420 Accounts Payable	60,669	1,527,078		
0430 Contracts Payable				
0440 Current Portion of Long-Term Debt				
0450 Short-Term Payables				
0461 Accrued Salaries and Benefits				
0462 Payroll Deductions and Withholding				
0480 Unearned Revenues				
0490 Other Current Liabilities				

Total Liabilities	\$60,669	\$1,527,078		
--------------------------	-----------------	--------------------	--	--

0950 Deferred Inflows of Resources

Fund Balances

0810 Nonspendable Fund Balance				
0820 Restricted Fund Balance		6,910,142	2,790,914	
0830 Committed Fund Balance	8,209,000			
0840 Assigned Fund Balance				
0850 Unassigned Fund Balance				

Total Fund Balances	\$8,209,000	\$6,910,142	\$2,790,914	
----------------------------	--------------------	--------------------	--------------------	--

Total Liabilities, Deferred Inflows Of Resources And Fund Balances	\$8,269,669	\$8,437,220	\$2,790,914	
---	--------------------	--------------------	--------------------	--

Amounts Expressed in Whole Dollars

Total Governmental Funds

Liabilities And Deferred Inflows Of Resources And Fund Balances

Liabilities

0400 Due to Other Funds	
0411 Due to Other Governments	
0412 Due to Primary Government	
0413 Due to Component Unit	
0420 Accounts Payable	3,141,157
0430 Contracts Payable	
0440 Current Portion of Long-Term Debt	
0450 Short-Term Payables	
0461 Accrued Salaries and Benefits	11,383,595
0462 Payroll Deductions and Withholding	
0480 Unearned Revenues	
0490 Other Current Liabilities	480,033

Total Liabilities \$15,004,785

0950 Deferred Inflows of Resources	733,114
------------------------------------	---------

Fund Balances

0810 Nonspendable Fund Balance	
0820 Restricted Fund Balance	9,701,056
0830 Committed Fund Balance	30,704,350
0840 Assigned Fund Balance	
0850 Unassigned Fund Balance	8,835,876

Total Fund Balances \$49,241,282

Total Liabilities, Deferred Inflows Of Resources And Fund Balances \$64,979,181

Amounts Expressed in Whole Dollars	<u>General Fund</u> <u>(10)</u>	<u>Student Sponsored</u> <u>Activity Fund</u> <u>(21)</u>	<u>Public Purpose Trust</u> <u>(27)</u>	<u>Other Compt Approved</u> <u>(28)</u>	<u>Athletic / Activity</u> <u>(29)</u>
Revenues					
6000 Revenue from Local Sources	89,715,962				14,784
7000 Revenue from State Sources	15,790,164				
8000 Revenue from Federal Sources	2,867,660				
Total Revenues	\$108,373,786				\$14,784
Expenditures					
1000 Instruction	59,906,765				
2000 Support Services	35,071,556				
3000 Operation of Non-Instructional Services	1,521,722				39,900
4000 Facilities Acquisition, Construction and Improvement Services					
5110 Debt Service	7,725,366				
5130 Refund of Prior Year Revenues / Receipts					
5140 Leases	282,891				
Total Expenditures	\$104,508,300				\$39,900
Excess (Deficiency) Of Revenues Over Expenditures	\$3,865,486				(\$25,116)
Other Financing Sources (Uses)					
9110 Face Value of Bonds Issued					
9120 Proceeds from Refunding of Bonds					
9130 Bond Premiums					
9200 Proceeds from Extended-Term Financing and Leases					
9300 Interfund Transfers - IN					25,000
9400 Sale of or Compensation for Loss of Fixed Assets	23,606				
9710 Transfers from Component Units					
9720 Transfers from Primary Governments					
9910 Other Financing Sources Not Listed in the 9000 Series					
9990 Insurance Recoveries	1,056				
5120 Debt Service – Refunded Bonds					
5150 Bond Discounts					
5200 Interfund Transfers – Out	1,220,481				
5300 Transfers Out to Component Units/Primary Governments					
Total Other Financing Sources (Uses)	(\$1,195,819)				\$25,000

Amounts Expressed in Whole Dollars	<u>Capital Reserve (690.1850)</u> <u>(31)</u>	<u>Capital Reserve (1431)</u> <u>(32)</u>	<u>Other Capital Projects</u> <u>Fund</u> <u>(39)</u>	<u>Debt Service</u> <u>(40)</u>	<u>Permanent</u> <u>(90)</u>
Revenues					
6000 Revenue from Local Sources		8,592	13,329	(353,932)	
7000 Revenue from State Sources					
8000 Revenue from Federal Sources					
Total Revenues		\$8,592	\$13,329	(\$353,932)	
Expenditures					
1000 Instruction					
2000 Support Services		287,629			
3000 Operation of Non-Instructional Services					
4000 Facilities Acquisition, Construction and Improvement Services		168,477	17,469,880		
5110 Debt Service					
5130 Refund of Prior Year Revenues / Receipts					
5140 Leases					
Total Expenditures		\$456,106	\$17,469,880		
Excess (Deficiency) Of Revenues Over Expenditures		(\$447,514)	(\$17,456,551)	(\$353,932)	
Other Financing Sources (Uses)					
9110 Face Value of Bonds Issued					
9120 Proceeds from Refunding of Bonds					
9130 Bond Premiums					
9200 Proceeds from Extended-Term Financing and Leases					
9300 Interfund Transfers - IN		914,092		281,389	
9400 Sale of or Compensation for Loss of Fixed Assets					
9710 Transfers from Component Units					
9720 Transfers from Primary Governments					
9910 Other Financing Sources Not Listed in the 9000 Series					
9990 Insurance Recoveries					
5120 Debt Service – Refunded Bonds					
5150 Bond Discounts					
5200 Interfund Transfers – Out					
5300 Transfers Out to Component Units/Primary Governments					
Total Other Financing Sources (Uses)		\$914,092		\$281,389	

Amounts Expressed in Whole Dollars	<u>Total Governmental Funds</u>
Revenues	
6000 Revenue from Local Sources	89,398,735
7000 Revenue from State Sources	15,790,164
8000 Revenue from Federal Sources	2,867,660
Total Revenues	\$108,056,559
Expenditures	
1000 Instruction	59,906,765
2000 Support Services	35,359,185
3000 Operation of Non-Instructional Services	1,561,622
4000 Facilities Acquisition, Construction and Improvement Services	17,638,357
5110 Debt Service	7,725,366
5130 Refund of Prior Year Revenues / Receipts	
5140 Leases	282,891
Total Expenditures	\$122,474,186
Excess (Deficiency) Of Revenues Over Expenditures	(\$14,417,627)
Other Financing Sources (Uses)	
9110 Face Value of Bonds Issued	
9120 Proceeds from Refunding of Bonds	
9130 Bond Premiums	
9200 Proceeds from Extended-Term Financing and Leases	
9300 Interfund Transfers - IN	1,220,481
9400 Sale of or Compensation for Loss of Fixed Assets	23,606
9710 Transfers from Component Units	
9720 Transfers from Primary Governments	
9910 Other Financing Sources Not Listed in the 9000 Series	
9990 Insurance Recoveries	1,056
5120 Debt Service – Refunded Bonds	
5150 Bond Discounts	
5200 Interfund Transfers – Out	1,220,481
5300 Transfers Out to Component Units/Primary Governments	
Total Other Financing Sources (Uses)	\$24,662

Amounts Expressed in Whole Dollars	<u>General Fund</u> <u>(10)</u>	<u>Student Sponsored</u> <u>Activity Fund</u> <u>(21)</u>	<u>Public Purpose Trust</u> <u>(27)</u>	<u>Other Compt Approved</u> <u>(28)</u>	<u>Athletic / Activity</u> <u>(29)</u>
Special And Extraordinary Items					
9920 Special Items – Gains					
9930 Extraordinary Items – Gains					
5520 Special Items – Losses					
5530 Extraordinary Items – Losses					
Net Change In Fund Balances	\$2,669,667				(\$116)
Fund Balance					
0001 Fund Balance - Beginning of Fiscal Year	28,651,683				9,993
Fund Balance - End Of Year	\$31,321,350				\$9,877

Amounts Expressed in Whole Dollars	<u>Capital Reserve (690.</u> <u>1850)</u> <u>(31)</u>	<u>Capital Reserve (1431)</u> <u>(32)</u>	<u>Other Capital Projects</u> <u>Fund</u> <u>(39)</u>	<u>Debt Service</u> <u>(40)</u>	<u>Permanent</u> <u>(90)</u>
Special And Extraordinary Items					
9920 Special Items – Gains					
9930 Extraordinary Items – Gains					
5520 Special Items – Losses					
5530 Extraordinary Items – Losses					
Net Change In Fund Balances		\$466,578	(\$17,456,551)	(\$72,543)	
Fund Balance					
0001 Fund Balance - Beginning of Fiscal Year		7,742,422	24,366,693	2,863,457	
Fund Balance - End Of Year		\$8,209,000	\$6,910,142	\$2,790,914	

Amounts Expressed in Whole Dollars	<u>Total Governmental Funds</u>
Special And Extraordinary Items	
9920 Special Items – Gains	
9930 Extraordinary Items – Gains	
5520 Special Items – Losses	
5530 Extraordinary Items – Losses	
Net Change In Fund Balances	(\$14,392,965)
Fund Balance	
0001 Fund Balance - Beginning of Fiscal Year	63,634,248
Fund Balance - End Of Year	\$49,241,283

Amounts Expressed in Whole Dollars	<u>Food Service</u> <u>(51)</u>	<u>Child Care</u> <u>Operations</u> <u>(52)</u>	<u>Other Enterprise</u> <u>(58)</u>	<u>TOTAL</u>	<u>Internal Service</u> <u>(60)</u>
Assets And Deferred Outflows Of Resources					
Current Assets					
0100 Cash and Cash Equivalents	1,001,312			1,001,312	
0110 Investments					
0130 Due From Other Funds	1,736			1,736	
0141 Due From Other Governments	98,779			98,779	
0142 State Revenue Receivable					
0143 Federal Revenue Receivable					
0146 Due from Primary Government					
0147 Due from Component Unit					
0150 Other Receivables					
0170 Inventories	21,902			21,902	
0180 Prepaid Expenses (Expenditures)					9,065,408
0190 Other Current Assets					
Total Current Assets	\$1,123,729			\$1,123,729	\$9,065,408
Noncurrent Assets					
0211 Land					
0212 Site Improvements (Net)					
0220 Buildings and Building Improvements (Net)					
0230 Machinery, Equipment and Furniture (Net)					
0250 Construction in Progress					
0260 Long Term Prepayments					
0290 Other Noncurrent Assets	195,668			195,668	
Total Noncurrent Assets	\$195,668			\$195,668	
0910 Deferred Outflows of Resources	272,585			272,585	
Total Assets And Deferred Outflows Of Resources	\$1,591,982			\$1,591,982	\$9,065,408

Amounts Expressed in Whole Dollars	<u>Food Service</u> <u>(51)</u>	<u>Child Care</u> <u>Operations</u> <u>(52)</u>	<u>Other Enterprise</u> <u>(58)</u>	<u>TOTAL</u>	<u>Internal Service</u> <u>(60)</u>
Liabilities And Deferred Inflows Of Resources And Net Position					
Current Liabilities					
0400 Due to Other Funds	37			37	
0411 Due to Other Governments					
0413 Due to Component Unit					
0420 Accounts Payable	64,375			64,375	
0430 Contracts Payable					
0440 Current Portion of Long-Term Debt					
0450 Short-Term Payables					
0461 Accrued Salaries and Benefits					
0462 Payroll Deductions and Withholding					
0480 Unearned Revenues	96,829			96,829	
0490 Other Current Liabilities					
Total Current Liabilities	\$161,241			\$161,241	
Noncurrent Liabilities					
0510 Bonds Payable					
0520 Extended-Term Financing Agreements Payable					
0530 Lease Obligations					
0540 Accumulated Compensated Absences					
0550 Authority Lease Obligations					
0560 Other Post-Employment Benefits (OPEB)	79,438			79,438	
0570 Net Pension Liability	1,402,210			1,402,210	
0599 Other Noncurrent Liabilities					
Total Noncurrent Liabilities	\$1,481,648			\$1,481,648	
Total Liabilities	\$1,642,889			\$1,642,889	
0950 Deferred Inflows of Resources	244,062			244,062	
Net Position					
0791 Net Investment in Capital Assets	195,668			195,668	
0008 Restricted Net Position (0792 – 0798)					
0799 Unrestricted Net Position	(490,637)			(490,637)	9,065,408
Total Net Position	(\$294,969)			(\$294,969)	\$9,065,408
Total Liabilities And Deferred Inflows Of Resources And Net Position	\$1,591,982			\$1,591,982	\$9,065,408

Amounts Expressed in Whole Dollars	<u>Food Service</u> <u>(51)</u>	<u>Child Care Operations</u> <u>(52)</u>	<u>Other Enterprise</u> <u>(58)</u>	<u>TOTAL</u>	<u>Internal Service</u> <u>(60)</u>
Operating Revenues					
6600 Food Service Revenue	291,596			291,596	
0071 Charges for Services					11,820,001
0072 Other Operating Revenue					
Total Operating Revenues	\$291,596			\$291,596	\$11,820,001
Operating Expenses					
100 Personnel Services – Salaries	547,281			547,281	
200 Personnel Services – Employee Benefits	340,426			340,426	10,258,631
300 Purchased Professional and Technical Services	388			388	868,088
400 Purchased Property Services	40,565			40,565	
500 Other Purchased Services	56,811			56,811	
600 Supplies	899,339			899,339	
740 Depreciation	26,069			26,069	
810 Dues and Fees	3,415			3,415	
880 Refunds of Prior Years' Receipts					
890 Miscellaneous Expenditures					
Total Operating Expenses	\$1,914,294			\$1,914,294	\$11,126,719
Operating Income (Loss)	(\$1,622,698)			(\$1,622,698)	\$693,282
Non Operating Revenues (Expenses)					
6500 Earnings on Investments	851			851	16,394
6920 Contributions and Donations from Private Sources					
6930 Gains or Losses on Sale of Fixed Assets					
6991 Refunds of a Prior Year Expenditure					
7000 Revenue from State Sources	152,888			152,888	
8000 Revenue from Federal Sources	1,929,312			1,929,312	
9990 Insurance Recoveries					
820 Claims and Judgments Against the LEA					
830 Interest					
TOTAL Non Operating Revenues (Expenses)	\$2,083,051			\$2,083,051	\$16,394
Income (Loss) Before Contributions And Transfers	\$460,353			\$460,353	\$709,676

Amounts Expressed in Whole Dollars	<u>Food Service</u> <u>(51)</u>	<u>Child Care Operations</u> <u>(52)</u>	<u>Other Enterprise</u> <u>(58)</u>	<u>TOTAL</u>	<u>Internal Service</u> <u>(60)</u>
Contributions, Transfers, and Special and Extraordinary Items					
5200 Interfund Transfers – Out					
5300 Transfers Out to Component Units/Primary Governments					
5520 Special Items – Losses					
5530 Extraordinary Items – Losses					
9300 Interfund Transfers - IN					
9500 Capital Contributions					
9700 Transfers IN From Component Units/Primary Governments					
9920 Special Items – Gains					
9930 Extraordinary Items – Gains					
Change In Net Position	\$460,353			\$460,353	\$709,676
0002 Net Position - Beginning of Fiscal Year	(755,322)			(755,322)	8,355,732
0003 Accounting Changes / Residual Equity Transfers					
Net Position - End Of Year	(\$294,969)			(\$294,969)	\$9,065,408

Amounts Expressed in Whole Dollars	<u>Food Service</u> <u>(51)</u>	<u>Child Care Operations</u> <u>(52)</u>	<u>Other Enterprise</u> <u>(58)</u>	<u>TOTAL</u>	<u>Internal Service(60)</u>
Cash Flows From Operating Activities					
0011 Cash Receipts From Users	240,755			240,755	
0012 Cash Receipts From Assessments Made to Other Funds					11,820,001
0013 Cash Receipts From Earnings on Investments					
0014 Cash Receipts From Other Operating Revenue					
0015 Cash Payments To Employees For Services	888,369			888,369	
0016 Cash Payments For Insurance Claims					10,968,307
0017 Cash Payments To Suppliers For Goods and Services	948,033			948,033	
0018 Cash Payments For Other Operating Expenses					868,088
Net Cash Provided By (Used For) Operating Activities	(\$1,595,647)			(\$1,595,647)	(\$16,394)
Cash Flows From Non-Capital Financing Activities					
0021 Receipts From Local Sources - 6000					
0022 Receipts From State Sources - 7000	150,136			150,136	
0023 Receipts From Federal Sources -8000	1,823,773			1,823,773	
0024 Notes and Loans Received (Repaid)					
0025 Interest Paid on Notes/Loans - 5100-830					
0026 Operating Transfers In (Out)/Residual Equity Trans					
0027 Operating Transfers In (Out) Primary Government / Comp Unit					
0028 Receipts From Refund of Prior Year Expenditures - 6991					
0029 Special and Extraordinary Gains (losses)					
0030 Receipts from Insurance Recoveries -9990					
Net Cash Prov By (Used for) Non-Capital Financing Activities	\$1,973,909			\$1,973,909	
Cash Flows From Capital and Related Financing Activities					
0031 Payments For Fac Acq, Const, and Imp - 4000					
0032 Gain / (Loss) on Sale of Fixed Assets - 6930					
0033 Proceeds From Extended Term Financing - 9200					
0034 Principal Paid on Financing Agreements					
0035 Interest Paid on Financing Agreements - 5100-830					
0036 (Inc) Dec in Contributed Capital					
Net Cash Prov By (Used for) Capital and Related Financing Activities					
Cash Flows From Investing Activities					
0041 Earnings on Investments - 6500					16,394
0042 Purchase of Inv Securities / Deposits to Inv Pools					
0043 Receipts From Investment Pool Withdrawals					
0044 Proceeds from Sale and Maturity of Inv Securities					

LEA : 125237603 Radnor Township SD

Printed 2/10/2023 9:25:19 AM

0045 Loans Received (Paid)

Net Cash Prov By (Used for) Investing Activities	\$16,394
---	-----------------

	<u>Food Service</u> <u>(51)</u>	<u>Child Care Operations</u> <u>(52)</u>	<u>Other Enterprise</u> <u>(58)</u>	<u>TOTAL</u>	<u>Internal Service</u> <u>(60)</u>
Net Increase (Decrease) in Cash Flows	378,262			378,262	
0004 Cash and Cash Equivalents Beginning of Year	622,199			622,199	
Cash and Cash Equivalents at Year End	\$1,000,461			\$1,000,461	
<hr/>					
Reconciliation of Operating Income (Loss) To Net Cash Provided by (Used For) Operating Activities					
0005 Operating Income (Loss) per REP	(1,622,698)			(1,622,698)	693,282
Adjustments					
0051 Depreciation and Net Amortization	26,069			26,069	
0052 Provision for Uncollectible Accounts					
0053 Other Adjustments	111,460			111,460	
Effect of Changes in Assets, Liabilities, Deferred Outflows and Deferred Inflows					
0054 (Inc) Dec In Accounts Receivable (0120-0150)	17,204			17,204	
0055 Advances to Other Funds (0160)	3,320			3,320	
0056 (Inc) Dec in Inventories (0170)	(1,350)			(1,350)	
0057 (Inc) Dec in Prepaid Expenses (0180)					(709,676)
0058 (Inc) Dec in Other Current or Noncurrent Assets					
0064 Deferred Outflows (0910)	(30,737)			(30,737)	
0059 Inc (Dec) in Accounts Payable (0400-0450)	(57,625)			(57,625)	
0060 Inc (Dec) in Accrued Salaries/Benefits (0461)					
0065 Inc (Dec) in Net Pension Liabilities (0570)	31,431			31,431	
0066 Inc (Dec) in Other Postemp Benefit Oblig (0560)	(195,028)			(195,028)	
0061 Inc (Dec) in Payroll Deductions/Withholding (0462)					
0062 Inc (Dec) in Unearned Revenue (0480)	(68,045)			(68,045)	
0063 Inc (Dec) in Other Current or Noncurrent Liabilities	37			37	
0067 Deferred Inflows (0950)	190,315			190,315	
Total Adjustments	\$27,051			\$27,051	(\$709,676)
Cash Provided By (Used for) Total	(\$1,595,647)			(\$1,595,647)	(\$16,394)

COMBINED STATEMENT OF CASH FLOWS
SCHEDULE OF NONCASH INVESTING, CAPITAL, AND FINANCING ACTIVITIES

Explanation of Transaction and Balance Sheet Effect	Amount
Total	

LEA : 125237603 Radnor Township SD

Printed 2/10/2023 9:25:20 AM

Amounts Expressed in Whole Dollars

Private Purpose Trust
(71)

Investment Trust
(72)

Pension Trust
(73)

Student Activity Custodial
(81)

Assets And Deferred Outflows Of Resources

	<u>Private Purpose Trust</u> <u>(71)</u>	<u>Investment Trust</u> <u>(72)</u>	<u>Pension Trust</u> <u>(73)</u>	<u>Student Activity Custodial</u> <u>(81)</u>
Assets				
0100 Cash and Cash Equivalents	72,194			
0110 Investments	248,000			
0130 Due From Other Funds				
0140 Due from Other Governments, Primary Government and Component Units				
0150 Other Receivables				
0170 Inventories				
0180 Prepaid Expenses (Expenditures)				
0190 Other Current Assets				
0220 Buildings and Building Improvements (Net)				
0230 Machinery, Equipment and Furniture (Net)				
Total Assets	\$320,194			
0910 Deferred Outflows of Resources				
Total Assets And Deferred Outflows Of Resources	\$320,194			

LEA : 125237603 Radnor Township SD

Printed 2/10/2023 9:25:20 AM

Amounts Expressed in Whole Dollars	<u>Other Custodial</u> <u>(89)</u>	<u>Fiduciary Component Units</u> <u>(98)</u>	<u>Total Fiduciary Funds</u>
Assets And Deferred Outflows Of Resources			
Assets			
0100 Cash and Cash Equivalents	54,757		126,951
0110 Investments			248,000
0130 Due From Other Funds			
0140 Due from Other Governments, Primary Government and Component Units			
0150 Other Receivables	6,364		6,364
0170 Inventories			
0180 Prepaid Expenses (Expenditures)			
0190 Other Current Assets			
0220 Buildings and Building Improvements (Net)			
0230 Machinery, Equipment and Furniture (Net)			
Total Assets	\$61,121		\$381,315
0910 Deferred Outflows of Resources			
Total Assets And Deferred Outflows Of Resources	\$61,121		\$381,315

LEA : 125237603 Radnor Township SD

Printed 2/10/2023 9:25:20 AM

Amounts Expressed in Whole Dollars	<u>Private Purpose Trust</u> (71)	<u>Investment Trust</u> (72)	<u>Pension Trust</u> (73)	<u>Student Activity Custodial</u> (81)
Liabilities, Deferred Inflows Of Resources And Net Position				
Liabilities				
0400 Due to Other Funds				
0410 Due to Other Governments, Primary Government and Component Units				
0420 Accounts Payable	501			
0430 Contracts Payable				
0450 Short-Term Payables				
0460 Payroll Accruals and Withholdings				
0480 Unearned Revenues				
0490 Other Current Liabilities				
Total Liabilities	\$501			
0950 Deferred Inflows of Resources				
Net Position				
0791 Net Investment in Capital Assets				
0009 Restricted Net Position (0792 – 0798)	319,693			
0799 Unrestricted Net Position				
Total Net Position	\$319,693			
Total Liabilities, Deferred Inflows Of Resources And Net Position	\$320,194			

LEA : 125237603 Radnor Township SD

Printed 2/10/2023 9:25:20 AM

Amounts Expressed in Whole Dollars	<u>Other Custodial</u> <u>(89)</u>	<u>Fiduciary Component Units</u> <u>(98)</u>	<u>Total Fiduciary Funds</u>
Liabilities, Deferred Inflows Of Resources And Net Position			
Liabilities			
0400 Due to Other Funds			
0410 Due to Other Governments, Primary Government and Component Units			
0420 Accounts Payable	300		801
0430 Contracts Payable			
0450 Short-Term Payables			
0460 Payroll Accruals and Withholdings			
0480 Unearned Revenues			
0490 Other Current Liabilities			
Total Liabilities	\$300		\$801
0950 Deferred Inflows of Resources			
Net Position			
0791 Net Investment in Capital Assets			
0009 Restricted Net Position (0792 – 0798)	60,821		380,514
0799 Unrestricted Net Position			
Total Net Position	\$60,821		\$380,514
Total Liabilities, Deferred Inflows Of Resources And Net Position	\$61,121		\$381,315

Amounts Expressed in Whole Dollars	<u>Private Purpose Trust</u> <u>(71)</u>	<u>Investment Trust</u> <u>(72)</u>	<u>Pension Trust</u> <u>(73)</u>	<u>Student Activity</u> <u>Custodial</u> <u>(81)</u>	<u>Other Custodial</u> <u>(89)</u>	<u>Fiduciary Component</u> <u>Units</u> <u>(98)</u>
Additions						
0091 Gifts and Contributions	15,988				69,527	
0095 Net Investment Earnings						
0092 Other Additions						
Deductions						
0093 Scholarships Awarded	26,427					
0094 Other Deductions					64,975	
Change In Net Position	(\$10,439)				\$4,552	
0006 Net Position – Beginning of Fiscal Year	330,132				56,269	
0007 Net Position Held in Trust for Pension Benefits						
Net Position - End of Fiscal Year	\$319,693				\$60,821	

Amounts Expressed in Whole Dollars	<u>Total Fiduciary Funds</u>
Additions	
0091 Gifts and Contributions	85,515
0095 Net Investment Earnings	
0092 Other Additions	
Deductions	
0093 Scholarships Awarded	26,427
0094 Other Deductions	64,975
Change In Net Position	(\$5,887)
0006 Net Position – Beginning of Fiscal Year	386,401
0007 Net Position Held in Trust for Pension Benefits	
Net Position - End of Fiscal Year	\$380,514

	<u>Revenue Reported In Current Year</u>	<u>Current Year Tax Accrual</u>	<u>Prior Year Tax Accrual</u>	<u>Taxes Collected In Current Year</u>
<u>Revenue from Local Sources</u>				
6111 Current Real Estate Taxes	82,713,752.43			82,713,752.43
6112 Interim Real Estate Taxes	507,201.19			507,201.19
6113 Public Utility Realty Taxes	79,753.10			79,753.10
6114 Payments in Lieu of Current Taxes - State / Local	172,339.73			172,339.73
6143 Current Act 511 Local Services Taxes	103,252.18			103,252.18
6153 Current Act 511 Real Estate Transfer Taxes	2,590,111.40			2,590,111.40
6411 Delinquent Real Estate Taxes	1,228,304.67			1,228,304.67
6500 Earnings on Investments	143,748.44			
6700 Revenues from LEA Activities	12,755.00			
6832 Federal IDEA Revenue Received as Pass Through	541,063.79			
6833 Federal ARRA IDEA Revenue Received as Pass Through	102,122.50			
6910 Rentals	47,480.28			
6920 Contributions and Donations from Private Sources	8,118.80			
6944 Receipts from Other LEAs in Pennsylvania - Education	1,148,553.35			
6991 Refunds of a Prior Year Expenditure	44,278.48			
6999 Other Revenues Not Specified Above	273,126.51			
TOTAL Revenue from Local Sources	\$89,715,961.85			\$87,394,714.70

**Revenue Reported
In Current Year**

Revenue from State Sources

7111 Basic Education Funding-Formula	2,390,515.35		
7112 Basic Education Funding-Social Security	1,723,814.73		
7160 Tuition for Orphans Subsidy	4,228.86		
7271 Special Education funds for School-Aged Pupils	1,334,928.79		
7311 Pupil Transportation Subsidy	267,680.33		
7312 Nonpublic and Charter School Pupil Transportation Subsidy	110,495.00		
7320 Rental and Sinking Fund Payments / Building Reimbursement Subsidy	182,936.61		
7330 Health Services (Medical, Dental, Nurse, Act 25)	125,152.74		
7340 State Property Tax Reduction Allocation	1,453,189.51		
7505 Ready to Learn Block Grant	113,925.00		
7599 Other State Revenue Not Listed Elsewhere in the 7000 Series	10,993.02		
7820 State Share of Retirement Contributions	8,072,303.93		
TOTAL Revenue from State Sources	\$15,790,163.87		

**Revenue Reported
In Current Year**

Revenue from Federal Sources

8514 NCLB, Title I - Improving the Academic Achievement of the Disadvantaged	525,797.13			
8515 NCLB, Title II - Preparing, Training and Recruiting High Quality Teachers and Principals	95,031.00			
8516 NCLB, Title III - Language Instruction for Limited English Proficient and Immigrant Students	28,725.55			
8517 NCLB, Title IV - 21St Century Schools	54,225.00			
8731 ARRA - Build America Bonds	79,212.00			
8732 ARRA - Qualified School Construction Bonds (QSCB)	171,048.12			
8743 ESSER II - Elementary and Secondary School Emergency Relief Fund	55,732.89			
8744 ARP ESSER - Elementary and Secondary School Emergency Relief Fund	1,720,278.29			
8749 Other CARES Act Funding	44,601.75			
8751 ARP ESSER Learning Loss	44,059.75			
8753 ARP ESSER Afterschool Programs	43,160.55			
8820 Medical Assistance Reimbursement for Administrative Claiming (Quarterly) Program	5,788.08			
TOTAL Revenue from Federal Sources	\$2,867,660.11			

**Revenue Reported
In Current Year**

Other Financing Sources

9400 Sale of or Compensation for Loss of Fixed Assets	23,606.00		
9990 Insurance Recoveries	1,056.00		
TOTAL Other Financing Sources	\$24,662.00		
TOTAL FROM ALL SOURCES	\$108,398,447.83		\$87,394,714.70

LEA : 125237603 Radnor Township SD

Printed 2/10/2023 9:25:25 AM

	<u>General Fund (10)</u>	<u>Student Sponsored Activity Fund (21)</u>	<u>Public Purpose Trust (27)</u>	<u>Other Compt Approved (28)</u>	<u>Athletic / Activity (29)</u>	<u>Capital Reserve (690, 1850) (31)</u>
6000 Revenue from Local Sources						
6111 Current Real Estate Taxes	82,713,752.43					
6112 Interim Real Estate Taxes	507,201.19					
6113 Public Utility Realty Taxes	79,753.10					
6114 Payments in Lieu of Current Taxes - State / Local	172,339.73					
6143 Current Act 511 Local Services Taxes	103,252.18					
6153 Current Act 511 Real Estate Transfer Taxes	2,590,111.40					
6411 Delinquent Real Estate Taxes	1,228,304.67					
6500 Earnings on Investments	143,748.44				22.93	
6700 Revenues from LEA Activities	12,755.00					
6832 Federal IDEA Revenue Received as Pass Through	541,063.79					
6833 Federal ARRA IDEA Revenue Received as Pass Through	102,122.50					
6910 Rentals	47,480.28				14,761.28	
6920 Contributions and Donations from Private Sources	8,118.80					
6944 Receipts from Other LEAs in Pennsylvania - Education	1,148,553.35					
6991 Refunds of a Prior Year Expenditure	44,278.48					
6999 Other Revenues Not Specified Above	273,126.51					
6000 Total Revenue from Local Sources	\$89,715,961.85				\$14,784.21	
7000 Revenue from State Sources						
7111 Basic Education Funding-Formula	2,390,515.35					
7112 Basic Education Funding-Social Security	1,723,814.73					
7160 Tuition for Orphans Subsidy	4,228.86					
7271 Special Education funds for School-Aged Pupils	1,334,928.79					
7311 Pupil Transportation Subsidy	267,680.33					
7312 Nonpublic and Charter School Pupil Transportation Subsidy	110,495.00					
7320 Rental and Sinking Fund Payments / Building Reimbursement Subsidy	182,936.61					
7330 Health Services (Medical, Dental, Nurse, Act 25)	125,152.74					
7340 State Property Tax Reduction Allocation	1,453,189.51					
7505 Ready to Learn Block Grant	113,925.00					
7599 Other State Revenue Not Listed Elsewhere in the 7000 Series	10,993.02					
7820 State Share of Retirement Contributions	8,072,303.93					
7000 Total Revenue from State Sources	\$15,790,163.87					
8000 Revenue from Federal Sources						
8514 NCLB, Title I - Improving the Academic Achievement of the Disadvantaged	525,797.13					
8515 NCLB, Title II - Preparing, Training and Recruiting High Quality Teachers and Principals	95,031.00					

	<u>Capital Reserve</u> <u>(1431) (32)</u>	<u>Other Capital</u> <u>Projects Fund (39)</u>	<u>Debt Service (40)</u>	<u>Permanent (90)</u>	<u>Total</u>
6000 Revenue from Local Sources					
6111 Current Real Estate Taxes					82,713,752.43
6112 Interim Real Estate Taxes					507,201.19
6113 Public Utility Realty Taxes					79,753.10
6114 Payments in Lieu of Current Taxes - State / Local					172,339.73
6143 Current Act 511 Local Services Taxes					103,252.18
6153 Current Act 511 Real Estate Transfer Taxes					2,590,111.40
6411 Delinquent Real Estate Taxes					1,228,304.67
6500 Earnings on Investments	8,592.08	13,329.14	(353,932.00)		(188,239.41)
6700 Revenues from LEA Activities					12,755.00
6832 Federal IDEA Revenue Received as Pass Through					541,063.79
6833 Federal ARRA IDEA Revenue Received as Pass Through					102,122.50
6910 Rentals					62,241.56
6920 Contributions and Donations from Private Sources					8,118.80
6944 Receipts from Other LEAs in Pennsylvania - Education					1,148,553.35
6991 Refunds of a Prior Year Expenditure					44,278.48
6999 Other Revenues Not Specified Above					273,126.51
6000 Total Revenue from Local Sources	\$8,592.08	\$13,329.14	(\$353,932.00)		\$89,398,735.28
7000 Revenue from State Sources					
7111 Basic Education Funding-Formula					2,390,515.35
7112 Basic Education Funding-Social Security					1,723,814.73
7160 Tuition for Orphans Subsidy					4,228.86
7271 Special Education funds for School-Aged Pupils					1,334,928.79
7311 Pupil Transportation Subsidy					267,680.33
7312 Nonpublic and Charter School Pupil Transportation Subsidy					110,495.00
7320 Rental and Sinking Fund Payments / Building Reimbursement Subsidy					182,936.61
7330 Health Services (Medical, Dental, Nurse, Act 25)					125,152.74
7340 State Property Tax Reduction Allocation					1,453,189.51
7505 Ready to Learn Block Grant					113,925.00
7599 Other State Revenue Not Listed Elsewhere in the 7000 Series					10,993.02
7820 State Share of Retirement Contributions					8,072,303.93
7000 Total Revenue from State Sources					\$15,790,163.87
8000 Revenue from Federal Sources					
8514 NCLB, Title I - Improving the Academic Achievement of the Disadvantaged					525,797.13
8515 NCLB, Title II - Preparing, Training and Recruiting High Quality Teachers and Principals					95,031.00

	<u>General Fund (10)</u>	<u>Student Sponsored Activity Fund (21)</u>	<u>Public Purpose Trust (27)</u>	<u>Other Compt Approved (28)</u>	<u>Athletic / Activity (29)</u>	<u>Capital Reserve (690.1850) (31)</u>
8000 Revenue from Federal Sources						
8516 NCLB, Title III - Language Instruction for Limited English Proficient and Immigrant Students	28,725.55					
8517 NCLB, Title IV - 21st Century Schools	54,225.00					
8731 ARRA - Build America Bonds	79,212.00					
8732 ARRA - Qualified School Construction Bonds (QSCB)	171,048.12					
8743 ESSER II - Elementary and Secondary School Emergency Relief Fund	55,732.89					
8744 ARP ESSER - Elementary and Secondary School Emergency Relief Fund	1,720,278.29					
8749 Other CARES Act Funding	44,601.75					
8751 ARP ESSER Learning Loss	44,059.75					
8753 ARP ESSER Afterschool Programs	43,160.55					
8820 Medical Assistance Reimbursement for Administrative Claiming (Quarterly) Program	5,788.08					
8000 Total Revenue from Federal Sources	\$2,867,660.11					
9000 Other Financing Sources						
9310 General Fund Transfers					25,000.00	
9400 Sale of or Compensation for Loss of Fixed Assets	23,606.00					
9990 Insurance Recoveries	1,056.00					
9000 Total Other Financing Sources	\$24,662.00				\$25,000.00	
Total From All Sources	\$108,398,447.83				\$39,784.21	

	<u>Capital Reserve</u> <u>(1431) (32)</u>	<u>Other Capital</u> <u>Projects Fund (39)</u>	<u>Debt Service (40)</u>	<u>Permanent (90)</u>	<u>Total</u>
8000 Revenue from Federal Sources					
8516 NCLB, Title III - Language Instruction for Limited English Proficient and Immigrant Students					28,725.55
8517 NCLB, Title IV - 21st Century Schools					54,225.00
8731 ARRA - Build America Bonds					79,212.00
8732 ARRA - Qualified School Construction Bonds (QSCB)					171,048.12
8743 ESSER II - Elementary and Secondary School Emergency Relief Fund					55,732.89
8744 ARP ESSER - Elementary and Secondary School Emergency Relief Fund					1,720,278.29
8749 Other CARES Act Funding					44,601.75
8751 ARP ESSER Learning Loss					44,059.75
8753 ARP ESSER Afterschool Programs					43,160.55
8820 Medical Assistance Reimbursement for Administrative Claiming (Quarterly) Program					5,788.08
8000 Total Revenue from Federal Sources					\$2,867,660.11
9000 Other Financing Sources					
9310 General Fund Transfers	914,092.00		281,389.00		1,220,481.00
9400 Sale of or Compensation for Loss of Fixed Assets					23,606.00
9990 Insurance Recoveries					1,056.00
9000 Total Other Financing Sources	\$914,092.00		\$281,389.00		\$1,245,143.00
Total From All Sources	\$922,684.08	\$13,329.14	(\$72,543.00)		\$109,301,702.26

	<u>General Fund (10)</u>	<u>Student Sponsored Activity Fund (21)</u>	<u>Public Purpose Trust (27)</u>	<u>Other Compt Approved (28)</u>	<u>Athletic / Activity (29)</u>	<u>Capital Reserve (690. 1850) (31)</u>
Revenue from Local Sources	89,715,961.85				14,784.21	
Revenue from State Sources	15,790,163.87					
Revenue from Federal Sources	2,867,660.11					
Other Financing Sources	24,662.00				25,000.00	
Total From All Sources	\$108,398,447.83				\$39,784.21	

	<u>Capital Reserve (1431)</u> <u>(32)</u>	<u>Other Capital Projects</u> <u>Fund (39)</u>	<u>Debt Service (40)</u>	<u>Permanent (90)</u>	<u>Total</u>
Revenue from Local Sources	8,592.08	13,329.14	(353,932.00)		89,398,735.28
Revenue from State Sources					15,790,163.87
Revenue from Federal Sources					2,867,660.11
Other Financing Sources	914,092.00		281,389.00		1,245,143.00
Total From All Sources	\$922,684.08	\$13,329.14	(\$72,543.00)		\$109,301,702.26

General Fund (10)

	<u>Total</u>
1000 Instruction	
100 Personnel Services – Salaries	
100 Personnel Services – Salaries	29,804,331.27
Total Personnel Services – Salaries	\$29,804,331.27
200 Personnel Services – Employee Benefits	
210 Group Insurance – Contracted Provider	4,850,783.91
220 Social Security Contributions	2,223,166.75
230 PSERS Retirement Contributions	10,207,688.09
250 Unemployment Compensation	19,209.55
260 Workers’ Compensation	164,783.44
270 Group Insurance – Self-Insurance	971,757.26
292 Health Savings Accounts	3,224.26
Total Personnel Services – Employee Benefits	\$18,440,613.26
300 Purchased Professional and Technical Services	
322 Professional Educational Services – Ius	937,485.30
329 Professional Educational Services – Other	1,264,843.52
330 Other Professional Services	1,917,611.08
340 Technical Services	4,347.00
390 Other Purchased Professional and Technical Services	245,681.86
Total Purchased Professional and Technical Services	\$4,369,968.76
400 Purchased Property Services	
430 Repairs and Maintenance Services	103,862.24
Total Purchased Property Services	\$103,862.24
500 Other Purchased Services	
550 Printing and Binding	4,195.34
562 Tuition To Pennsylvania Charter Schools	356,923.64
563 Tuition To Nonpublic Schools	1,191,461.17
564 Tuition To Career and Technology Centers	1,910,483.35
566 Tuition To Institutions of Higher Education and Technical Institutes	1,194,382.00
567 Tuition To Approved Private Schools (APS) and PA Chartered Schools for the Deaf and Blind	366,119.10
580 Travel	140.00
591 Services Purchased Locally	39,882.27
594 IU Payment By Withholding for Institutionalized Children’s Programs – Special Classes	1,908.33
Total Other Purchased Services	\$5,065,495.20
600 Supplies	
610 General Supplies	702,109.56
630 Food	12,089.33
640 Books and Periodicals	553,146.71
650 Supplies & Fees – Technology Related	211,888.34
Total Supplies	\$1,479,233.94
700 Property	
752 Capital Equipment – Original and Additional	111,577.24
756 Capitalized Technology Equipment – Original	28,980.64
762 Capitalized Equipment - Replacement	937.98

General Fund (10)

1000 Instruction	<u>Total</u>
700 <u>Property</u>	
766 Capitalized Technology Equipment – Replacement	497,427.24
Total Property	\$638,923.10
800 <u>Other Objects</u>	
810 Dues and Fees	4,336.82
Total Other Objects	\$4,336.82
Total 1000 Instruction	\$59,906,764.59

General Fund (10)

1100 Regular Programs – Elementary / Secondary

	<u>Elementary</u>	<u>Secondary</u>	<u>Federal</u>	<u>Total</u>
100 Personnel Services – Salaries				
100 Personnel Services – Salaries	11,646,573.35	12,237,084.14	627,010.78	24,510,668.27
Total Personnel Services – Salaries	\$11,646,573.35	\$12,237,084.14	\$627,010.78	\$24,510,668.27
200 Personnel Services – Employee Benefits				
210 Group Insurance – Contracted Provider	1,939,100.40	2,124,041.42	33,837.57	4,096,979.39
220 Social Security Contributions	889,212.15	917,151.19	35,061.52	1,841,424.86
230 PSERS Retirement Contributions	4,145,104.11	4,253,406.75	45,923.44	8,444,434.30
250 Unemployment Compensation	6,313.28	12,896.27		19,209.55
260 Workers' Compensation	62,948.04	63,646.15	8,258.06	134,852.25
270 Group Insurance – Self-Insurance	398,507.30	441,390.90	8,687.44	848,585.64
292 Health Savings Accounts	3,224.26			3,224.26
Total Personnel Services – Employee Benefits	\$7,444,409.54	\$7,812,532.68	\$131,768.03	\$15,388,710.25
300 Purchased Professional and Technical Services				
322 Professional Educational Services – Ius	160,108.32	86,017.89	5,000.00	251,126.21
329 Professional Educational Services – Other	752,933.77	511,909.75		1,264,843.52
330 Other Professional Services		1,243.77		1,243.77
390 Other Purchased Professional and Technical Services			37,606.00	37,606.00
Total Purchased Professional and Technical Services	\$913,042.09	\$599,171.41	\$42,606.00	\$1,554,819.50
400 Purchased Property Services				
430 Repairs and Maintenance Services	32,806.59	29,884.90	15,900.00	78,591.49
Total Purchased Property Services	\$32,806.59	\$29,884.90	\$15,900.00	\$78,591.49
500 Other Purchased Services				
550 Printing and Binding	1,289.85	2,905.49		4,195.34
562 Tuition To Pennsylvania Charter Schools	125,211.07	100,160.51		225,371.58
580 Travel	140.00			140.00
Total Other Purchased Services	\$126,640.92	\$103,066.00		\$229,706.92
600 Supplies				
610 General Supplies	342,256.43	273,541.78	57,521.70	673,319.91
630 Food	1,641.10	9,643.30		11,284.40
640 Books and Periodicals	315,894.59	209,757.88	3,282.12	528,934.59
650 Supplies & Fees – Technology Related	102,463.87	49,048.80	14,525.25	166,037.92
Total Supplies	\$762,255.99	\$541,991.76	\$75,329.07	\$1,379,576.82
700 Property				
752 Capital Equipment – Original and Additional	512.11	8,942.63		9,454.74
762 Capitalized Equipment - Replacement	309.53	628.45		937.98
766 Capitalized Technology Equipment – Replacement	187,076.00	310,351.24		497,427.24
Total Property	\$187,897.64	\$319,922.32		\$507,819.96
800 Other Objects				
810 Dues and Fees	133.31	4,063.55		4,196.86
Total Other Objects	\$133.31	\$4,063.55		\$4,196.86
Total 1100 Regular Programs – Elementary / Secondary	\$21,113,759.43	\$21,647,716.76	\$892,613.88	\$43,654,090.07

General Fund (10)

1110 Regular Programs

	<u>Elementary</u>	<u>Secondary</u>	<u>Federal</u>	<u>Total</u>
100 Personnel Services – Salaries				
100 Personnel Services – Salaries	11,646,573.35	12,237,084.14	342,194.21	24,225,851.70
Total Personnel Services – Salaries	\$11,646,573.35	\$12,237,084.14	\$342,194.21	\$24,225,851.70
200 Personnel Services – Employee Benefits				
210 Group Insurance – Contracted Provider	1,939,100.40	2,124,041.42	15.30	4,063,157.12
220 Social Security Contributions	889,212.15	917,151.19	27,007.95	1,833,371.29
230 PSERS Retirement Contributions	4,145,104.11	4,253,406.75	9,387.61	8,407,898.47
250 Unemployment Compensation	6,313.28	12,896.27		19,209.55
260 Workers' Compensation	62,948.04	63,646.15	6,330.20	132,924.39
270 Group Insurance – Self-Insurance	398,507.30	441,390.90		839,898.20
292 Health Savings Accounts	3,224.26			3,224.26
Total Personnel Services – Employee Benefits	\$7,444,409.54	\$7,812,532.68	\$42,741.06	\$15,299,683.28
300 Purchased Professional and Technical Services				
322 Professional Educational Services – Ius	160,108.32	86,017.89		246,126.21
329 Professional Educational Services – Other	752,933.77	511,909.75		1,264,843.52
330 Other Professional Services		1,243.77		1,243.77
Total Purchased Professional and Technical Services	\$913,042.09	\$599,171.41		\$1,512,213.50
400 Purchased Property Services				
430 Repairs and Maintenance Services	32,806.59	29,884.90	15,900.00	78,591.49
Total Purchased Property Services	\$32,806.59	\$29,884.90	\$15,900.00	\$78,591.49
500 Other Purchased Services				
550 Printing and Binding	1,289.85	2,905.49		4,195.34
562 Tuition To Pennsylvania Charter Schools	125,211.07	100,160.51		225,371.58
580 Travel	140.00			140.00
Total Other Purchased Services	\$126,640.92	\$103,066.00		\$229,706.92
600 Supplies				
610 General Supplies	342,256.43	273,541.78	55,732.89	671,531.10
630 Food	1,641.10	9,643.30		11,284.40
640 Books and Periodicals	315,894.59	209,757.88	3,282.12	528,934.59
650 Supplies & Fees – Technology Related	102,463.87	49,048.80	14,525.25	166,037.92
Total Supplies	\$762,255.99	\$541,991.76	\$73,540.26	\$1,377,788.01
700 Property				
752 Capital Equipment – Original and Additional	512.11	8,942.63		9,454.74
762 Capitalized Equipment - Replacement	309.53	628.45		937.98
766 Capitalized Technology Equipment – Replacement	187,076.00	310,351.24		497,427.24
Total Property	\$187,897.64	\$319,922.32		\$507,819.96
800 Other Objects				
810 Dues and Fees	133.31	4,063.55		4,196.86
Total Other Objects	\$133.31	\$4,063.55		\$4,196.86
Total 1110 Regular Programs	\$21,113,759.43	\$21,647,716.76	\$474,375.53	\$43,235,851.72

General Fund (10)

	<u>Elementary</u>	<u>Secondary</u>	<u>Federal</u>	<u>Total</u>
1190 Federally-Funded Regular Programs				
100 Personnel Services – Salaries				
100 Personnel Services – Salaries			284,816.57	284,816.57
Total Personnel Services – Salaries			\$284,816.57	\$284,816.57
200 Personnel Services – Employee Benefits				
210 Group Insurance – Contracted Provider			33,822.27	33,822.27
220 Social Security Contributions			8,053.57	8,053.57
230 PSERS Retirement Contributions			36,535.83	36,535.83
260 Workers' Compensation			1,927.86	1,927.86
270 Group Insurance – Self-Insurance			8,687.44	8,687.44
Total Personnel Services – Employee Benefits			\$89,026.97	\$89,026.97
300 Purchased Professional and Technical Services				
322 Professional Educational Services – lus			5,000.00	5,000.00
390 Other Purchased Professional and Technical Services			37,606.00	37,606.00
Total Purchased Professional and Technical Services			\$42,606.00	\$42,606.00
600 Supplies				
610 General Supplies			1,788.81	1,788.81
Total Supplies			\$1,788.81	\$1,788.81
Total 1190 Federally-Funded Regular Programs			\$418,238.35	\$418,238.35

General Fund (10)

1200 Special Programs – Elementary / Secondary

	<u>Elementary</u>	<u>Secondary</u>	<u>Federal</u>	<u>Total</u>
100 Personnel Services – Salaries				
100 Personnel Services – Salaries	2,607,396.17	2,319,880.56	141,375.02	5,068,651.75
Total Personnel Services – Salaries	\$2,607,396.17	\$2,319,880.56	\$141,375.02	\$5,068,651.75
200 Personnel Services – Employee Benefits				
210 Group Insurance – Contracted Provider	409,975.50	343,818.82	10.20	753,804.52
220 Social Security Contributions	195,319.16	170,820.41	1,104.16	367,243.73
230 PSERS Retirement Contributions	913,043.79	777,942.26	4,721.76	1,695,707.81
260 Workers' Compensation	14,332.01	13,330.44	243.50	27,905.95
270 Group Insurance – Self-Insurance	58,197.89	64,973.73		123,171.62
Total Personnel Services – Employee Benefits	\$1,590,868.35	\$1,370,885.66	\$6,079.62	\$2,967,833.63
300 Purchased Professional and Technical Services				
322 Professional Educational Services – lus	175,062.26	273,351.27	237,945.56	686,359.09
330 Other Professional Services	780,608.89	790,886.87	297,371.55	1,868,867.31
340 Technical Services	1,890.00	2,457.00		4,347.00
390 Other Purchased Professional and Technical Services	88,087.82	119,988.04		208,075.86
Total Purchased Professional and Technical Services	\$1,045,648.97	\$1,186,683.18	\$535,317.11	\$2,767,649.26
400 Purchased Property Services				
430 Repairs and Maintenance Services	10,472.87	14,797.88		25,270.75
Total Purchased Property Services	\$10,472.87	\$14,797.88		\$25,270.75
500 Other Purchased Services				
562 Tuition To Pennsylvania Charter Schools	44,549.35	87,002.71		131,552.06
563 Tuition To Nonpublic Schools	457,176.68	734,284.49		1,191,461.17
564 Tuition To Career and Technology Centers	654,596.93	880,666.34		1,535,263.27
567 Tuition To Approved Private Schools (APS) and PA Chartered Schools for the Deaf and Blind	183,059.55	183,059.55		366,119.10
594 IU Payment By Withholding for Institutionalized Children’s Programs – Special Classes		1,908.33		1,908.33
Total Other Purchased Services	\$1,339,382.51	\$1,886,921.42		\$3,226,303.93
600 Supplies				
610 General Supplies	15,746.99	7,792.11	4,220.16	27,759.26
630 Food	527.36	277.57		804.93
640 Books and Periodicals	6,741.18	7,644.96		14,386.14
650 Supplies & Fees – Technology Related	45,850.42			45,850.42
Total Supplies	\$68,865.95	\$15,714.64	\$4,220.16	\$88,800.75
700 Property				
752 Capital Equipment – Original and Additional			102,122.50	102,122.50
756 Capitalized Technology Equipment – Original		11,801.93	17,178.71	28,980.64
Total Property		\$11,801.93	\$119,301.21	\$131,103.14
800 Other Objects				
810 Dues and Fees		139.96		139.96
Total Other Objects		\$139.96		\$139.96
Total 1200 Special Programs – Elementary / Secondary	\$6,662,634.82	\$6,806,825.23	\$806,293.12	\$14,275,753.17

General Fund (10)

1210 Life Skills Support

	<u>Elementary</u>	<u>Secondary</u>	<u>Federal</u>	<u>Total</u>
100 Personnel Services – Salaries				
100 Personnel Services – Salaries	131,591.41	38,444.59	3,000.00	173,036.00
Total Personnel Services – Salaries	\$131,591.41	\$38,444.59	\$3,000.00	\$173,036.00
200 Personnel Services – Employee Benefits				
210 Group Insurance – Contracted Provider	15,724.34	3,166.27		18,890.61
220 Social Security Contributions	10,009.78	2,967.14		12,976.92
230 PSERS Retirement Contributions	45,642.69	12,719.78		58,362.47
260 Workers' Compensation	775.68	345.90		1,121.58
270 Group Insurance – Self-Insurance		2,810.75		2,810.75
Total Personnel Services – Employee Benefits	\$72,152.49	\$22,009.84		\$94,162.33
300 Purchased Professional and Technical Services				
322 Professional Educational Services – lus		1,985.15		1,985.15
330 Other Professional Services		5,728.89	20,460.37	26,189.26
Total Purchased Professional and Technical Services		\$7,714.04	\$20,460.37	\$28,174.41
600 Supplies				
610 General Supplies	534.49	474.52		1,009.01
Total Supplies	\$534.49	\$474.52		\$1,009.01
Total 1210 Life Skills Support	\$204,278.39	\$68,642.99	\$23,460.37	\$296,381.75

General Fund (10)

1220 Sensory Support

300 Purchased Professional and Technical Services

	<u>Elementary</u>	<u>Secondary</u>	<u>Federal</u>	<u>Total</u>
322 Professional Educational Services – Ius		19,224.66	200,210.56	219,435.22
330 Other Professional Services	255,027.60	262,955.50	87,220.60	605,203.70
Total Purchased Professional and Technical Services	\$255,027.60	\$282,180.16	\$287,431.16	\$824,638.92

600 Supplies

610 General Supplies	306.21			306.21
Total Supplies	\$306.21			\$306.21

Total 1220 Sensory Support	\$255,333.81	\$282,180.16	\$287,431.16	\$824,945.13
-----------------------------------	---------------------	---------------------	---------------------	---------------------

General Fund (10)

1230 Emotional Support

	<u>Elementary</u>	<u>Secondary</u>	<u>Federal</u>	<u>Total</u>
100 Personnel Services – Salaries				
100 Personnel Services – Salaries	54,037.61	168,697.96	3,000.00	225,735.57
Total Personnel Services – Salaries	\$54,037.61	\$168,697.96	\$3,000.00	\$225,735.57
200 Personnel Services – Employee Benefits				
210 Group Insurance – Contracted Provider	9,167.98	19,728.54		28,896.52
220 Social Security Contributions	4,083.30	12,822.45		16,905.75
230 PSERS Retirement Contributions	18,042.05	57,336.01		75,378.06
260 Workers' Compensation	287.86	894.01		1,181.87
270 Group Insurance – Self-Insurance	1,886.15	4,508.36		6,394.51
Total Personnel Services – Employee Benefits	\$33,467.34	\$95,289.37		\$128,756.71
300 Purchased Professional and Technical Services				
322 Professional Educational Services – lus	148,965.19	5,174.00	32,469.00	186,608.19
330 Other Professional Services	233,748.66	229,644.27	94,130.25	557,523.18
Total Purchased Professional and Technical Services	\$382,713.85	\$234,818.27	\$126,599.25	\$744,131.37
500 Other Purchased Services				
564 Tuition To Career and Technology Centers	654,596.93	880,666.34		1,535,263.27
Total Other Purchased Services	\$654,596.93	\$880,666.34		\$1,535,263.27
600 Supplies				
610 General Supplies	2,348.57	570.24		2,918.81
640 Books and Periodicals	30.20	61.30		91.50
Total Supplies	\$2,378.77	\$631.54		\$3,010.31
700 Property				
752 Capital Equipment – Original and Additional			42,687.50	42,687.50
Total Property			\$42,687.50	\$42,687.50
Total 1230 Emotional Support	\$1,127,194.50	\$1,380,103.48	\$172,286.75	\$2,679,584.73

General Fund (10)

1240 Academic Support

	<u>Elementary</u>	<u>Secondary</u>	<u>Federal</u>	<u>Total</u>
100 Personnel Services – Salaries				
100 Personnel Services – Salaries	2,421,767.15	2,112,738.01	135,375.02	4,669,880.18
Total Personnel Services – Salaries	\$2,421,767.15	\$2,112,738.01	\$135,375.02	\$4,669,880.18
200 Personnel Services – Employee Benefits				
210 Group Insurance – Contracted Provider	385,083.18	320,924.01	10.20	706,017.39
220 Social Security Contributions	181,226.08	155,030.82	1,104.16	337,361.06
230 PSERS Retirement Contributions	849,359.05	707,886.47	4,721.76	1,561,967.28
260 Workers' Compensation	13,268.47	12,090.53	243.50	25,602.50
270 Group Insurance – Self-Insurance	56,311.74	57,654.62		113,966.36
Total Personnel Services – Employee Benefits	\$1,485,248.52	\$1,253,586.45	\$6,079.62	\$2,744,914.59
300 Purchased Professional and Technical Services				
322 Professional Educational Services – lus	3,228.08	224,822.65	4,000.00	232,050.73
330 Other Professional Services	291,832.63	256,090.45	95,560.33	643,483.41
340 Technical Services	1,890.00	2,457.00		4,347.00
390 Other Purchased Professional and Technical Services	88,087.82	119,988.04		208,075.86
Total Purchased Professional and Technical Services	\$385,038.53	\$603,358.14	\$99,560.33	\$1,087,957.00
400 Purchased Property Services				
430 Repairs and Maintenance Services	10,472.87	14,797.88		25,270.75
Total Purchased Property Services	\$10,472.87	\$14,797.88		\$25,270.75
500 Other Purchased Services				
562 Tuition To Pennsylvania Charter Schools	44,549.35	87,002.71		131,552.06
563 Tuition To Nonpublic Schools	131,896.72	245,981.02		377,877.74
Total Other Purchased Services	\$176,446.07	\$332,983.73		\$509,429.80
600 Supplies				
610 General Supplies	12,557.72	6,747.35	4,220.16	23,525.23
630 Food	527.36	277.57		804.93
640 Books and Periodicals	6,710.98	7,583.66		14,294.64
650 Supplies & Fees – Technology Related	45,850.42			45,850.42
Total Supplies	\$65,646.48	\$14,608.58	\$4,220.16	\$84,475.22
700 Property				
752 Capital Equipment – Original and Additional			59,435.00	59,435.00
756 Capitalized Technology Equipment – Original		11,801.93	17,178.71	28,980.64
Total Property		\$11,801.93	\$76,613.71	\$88,415.64
800 Other Objects				
810 Dues and Fees		139.96		139.96
Total Other Objects		\$139.96		\$139.96
Total 1240 Academic Support	\$4,544,619.62	\$4,344,014.68	\$321,848.84	\$9,210,483.14

General Fund (10)

	<u>Elementary</u>	<u>Secondary</u>	<u>Federal</u>	<u>Total</u>
1241 Learning Support – Public				
100 Personnel Services – Salaries				
100 Personnel Services – Salaries	2,178,667.72	1,586,292.87	126,715.02	3,891,675.61
Total Personnel Services – Salaries	\$2,178,667.72	\$1,586,292.87	\$126,715.02	\$3,891,675.61
200 Personnel Services – Employee Benefits				
210 Group Insurance – Contracted Provider	341,285.67	210,761.76	10.20	552,057.63
220 Social Security Contributions	163,168.04	116,221.55	1,104.16	280,493.75
230 PSERS Retirement Contributions	764,420.17	526,238.36	4,721.76	1,295,380.29
260 Workers' Compensation	12,300.07	8,583.10	243.50	21,126.67
270 Group Insurance – Self-Insurance	45,906.78	35,398.30		81,305.08
Total Personnel Services – Employee Benefits	\$1,327,080.73	\$897,203.07	\$6,079.62	\$2,230,363.42
300 Purchased Professional and Technical Services				
322 Professional Educational Services – lus	3,228.08	224,822.65	4,000.00	232,050.73
330 Other Professional Services	291,832.63	256,090.45	95,560.33	643,483.41
340 Technical Services	1,890.00	2,457.00		4,347.00
390 Other Purchased Professional and Technical Services	88,087.82	119,988.04		208,075.86
Total Purchased Professional and Technical Services	\$385,038.53	\$603,358.14	\$99,560.33	\$1,087,957.00
400 Purchased Property Services				
430 Repairs and Maintenance Services	10,472.87	14,797.88		25,270.75
Total Purchased Property Services	\$10,472.87	\$14,797.88		\$25,270.75
500 Other Purchased Services				
562 Tuition To Pennsylvania Charter Schools	44,549.35	87,002.71		131,552.06
563 Tuition To Nonpublic Schools	131,896.72	245,981.02		377,877.74
Total Other Purchased Services	\$176,446.07	\$332,983.73		\$509,429.80
600 Supplies				
610 General Supplies	9,237.66	6,747.35	4,220.16	20,205.17
630 Food	527.36	277.57		804.93
640 Books and Periodicals	6,710.98	7,583.66		14,294.64
650 Supplies & Fees – Technology Related	45,850.42			45,850.42
Total Supplies	\$62,326.42	\$14,608.58	\$4,220.16	\$81,155.16
700 Property				
752 Capital Equipment – Original and Additional			59,435.00	59,435.00
756 Capitalized Technology Equipment – Original		11,801.93	17,178.71	28,980.64
Total Property		\$11,801.93	\$76,613.71	\$88,415.64
800 Other Objects				
810 Dues and Fees		139.96		139.96
Total Other Objects		\$139.96		\$139.96
Total 1241 Learning Support – Public	\$4,140,032.34	\$3,461,186.16	\$313,188.84	\$7,914,407.34

General Fund (10)

1243 Gifted Support

	<u>Elementary</u>	<u>Secondary</u>	<u>Federal</u>	<u>Total</u>
100 Personnel Services – Salaries				
100 Personnel Services – Salaries	243,099.43	526,445.14	8,660.00	778,204.57
Total Personnel Services – Salaries	\$243,099.43	\$526,445.14	\$8,660.00	\$778,204.57
200 Personnel Services – Employee Benefits				
210 Group Insurance – Contracted Provider	43,797.51	110,162.25		153,959.76
220 Social Security Contributions	18,058.04	38,809.27		56,867.31
230 PSERS Retirement Contributions	84,938.88	181,648.11		266,586.99
260 Workers' Compensation	968.40	3,507.43		4,475.83
270 Group Insurance – Self-Insurance	10,404.96	22,256.32		32,661.28
Total Personnel Services – Employee Benefits	\$158,167.79	\$356,383.38		\$514,551.17
600 Supplies				
610 General Supplies	3,320.06			3,320.06
Total Supplies	\$3,320.06			\$3,320.06
Total 1243 Gifted Support	\$404,587.28	\$882,828.52	\$8,660.00	\$1,296,075.80

General Fund (10)

1270 Multi-Handicapped Support

300 Purchased Professional and Technical Services

322 Professional Educational Services – Ius

330 Other Professional Services

Total Purchased Professional and Technical Services

500 Other Purchased Services

563 Tuition To Nonpublic Schools

Total Other Purchased Services

Total 1270 Multi-Handicapped Support

	<u>Elementary</u>	<u>Secondary</u>	<u>Federal</u>	<u>Total</u>
		22,144.81		22,144.81
		36,467.76		36,467.76
		\$58,612.57		\$58,612.57
	325,279.96	488,303.47		813,583.43
	\$325,279.96	\$488,303.47		\$813,583.43
	\$325,279.96	\$546,916.04		\$872,196.00

General Fund (10)

1280 Early Intervention Support

300 Purchased Professional and Technical Services

322 Professional Educational Services – lus

Total Purchased Professional and Technical Services

Total 1280 Early Intervention Support

	<u>Elementary</u>	<u>Secondary</u>	<u>Federal</u>	<u>Total</u>
	22,868.99		1,266.00	24,134.99
	\$22,868.99		\$1,266.00	\$24,134.99
	\$22,868.99		\$1,266.00	\$24,134.99

General Fund (10)

	<u>Elementary</u>	<u>Secondary</u>	<u>Federal</u>	<u>Total</u>
1290 Special Programs - Other Support				
500 Other Purchased Services				
567 Tuition To Approved Private Schools (APS) and PA Chartered Schools for the Deaf and Blind	183,059.55	183,059.55		366,119.10
594 IU Payment By Withholding for Institutionalized Children's Programs – Special Classes		1,908.33		1,908.33
Total Other Purchased Services	\$183,059.55	\$184,967.88		\$368,027.43
Total 1290 Special Programs - Other Support	\$183,059.55	\$184,967.88		\$368,027.43

General Fund (10)

1300 Vocational Education

Elementary

Secondary

Federal

Total

500 Other Purchased Services

564 Tuition To Career and Technology Centers

375,220.08

375,220.08

Total Other Purchased Services

\$375,220.08

\$375,220.08

Total 1300 Vocational Education

\$375,220.08

\$375,220.08

General Fund (10)

	<u>Elementary</u>	<u>Secondary</u>	<u>Federal</u>	<u>Total</u>
1400 Other Instructional Programs – Elementary / Secondary				
100 Personnel Services – Salaries				
100 Personnel Services – Salaries	84,567.60	77,061.15	63,382.50	225,011.25
Total Personnel Services – Salaries	\$84,567.60	\$77,061.15	\$63,382.50	\$225,011.25
200 Personnel Services – Employee Benefits				
220 Social Security Contributions	6,346.69	5,783.06	2,368.41	14,498.16
230 PSERS Retirement Contributions	29,547.90	26,925.15	11,072.93	67,545.98
260 Workers' Compensation	761.16	693.60	570.48	2,025.24
Total Personnel Services – Employee Benefits	\$36,655.75	\$33,401.81	\$14,011.82	\$84,069.38
300 Purchased Professional and Technical Services				
330 Other Professional Services		47,500.00		47,500.00
Total Purchased Professional and Technical Services		\$47,500.00		\$47,500.00
600 Supplies				
640 Books and Periodicals			9,825.98	9,825.98
Total Supplies			\$9,825.98	\$9,825.98
Total 1400 Other Instructional Programs – Elementary / Secondary	\$121,223.35	\$157,962.96	\$87,220.30	\$366,406.61

General Fund (10)

	<u>Elementary</u>	<u>Secondary</u>	<u>Federal</u>	<u>Total</u>
1430 Homebound Instruction				
100 Personnel Services – Salaries				
100 Personnel Services – Salaries	382.50	618.75		1,001.25
Total Personnel Services – Salaries	\$382.50	\$618.75		\$1,001.25
200 Personnel Services – Employee Benefits				
220 Social Security Contributions	29.17	46.58		75.75
230 PSERS Retirement Contributions	133.65	216.19		349.84
260 Workers’ Compensation	3.44	5.57		9.01
Total Personnel Services – Employee Benefits	\$166.26	\$268.34		\$434.60
300 Purchased Professional and Technical Services				
330 Other Professional Services		47,500.00		47,500.00
Total Purchased Professional and Technical Services		\$47,500.00		\$47,500.00
Total 1430 Homebound Instruction	\$548.76	\$48,387.09		\$48,935.85

General Fund (10)

	<u>Elementary</u>	<u>Secondary</u>	<u>Federal</u>	<u>Total</u>
1450 Instructional Programs Outside the Established School Day				
100 Personnel Services – Salaries				
100 Personnel Services – Salaries	84,185.10	76,442.40	63,382.50	224,010.00
Total Personnel Services – Salaries	\$84,185.10	\$76,442.40	\$63,382.50	\$224,010.00
200 Personnel Services – Employee Benefits				
220 Social Security Contributions	6,317.52	5,736.48	2,368.41	14,422.41
230 PSERS Retirement Contributions	29,414.25	26,708.96	11,072.93	67,196.14
260 Workers’ Compensation	757.72	688.03	570.48	2,016.23
Total Personnel Services – Employee Benefits	\$36,489.49	\$33,133.47	\$14,011.82	\$83,634.78
600 Supplies				
640 Books and Periodicals			9,825.98	9,825.98
Total Supplies			\$9,825.98	\$9,825.98
Total 1450 Instructional Programs Outside the Established School Day	\$120,674.59	\$109,575.87	\$87,220.30	\$317,470.76

General Fund (10)

1500 Nonpublic School Programs

Elementary

Secondary

Federal

Total

500 Other Purchased Services

591 Services Purchased Locally

39,882.27

39,882.27

Total Other Purchased Services

\$39,882.27

\$39,882.27

600 Supplies

610 General Supplies

1,030.39

1,030.39

Total Supplies

\$1,030.39

\$1,030.39

Total 1500 Nonpublic School Programs

\$40,912.66

\$40,912.66

General Fund (10)

1600 Adult Education Programs

Elementary

Secondary

Federal

Total

500 Other Purchased Services

566 Tuition To Institutions of Higher Education and Technical Institutes

1,194,382.00

Total Other Purchased Services

\$1,194,382.00

Total 1600 Adult Education Programs

\$1,194,382.00

General Fund (10)

2000 Support Services

Total

100 Personnel Services – Salaries

100 Personnel Services – Salaries 16,727,839.09

Total Personnel Services – Salaries \$16,727,839.09

200 Personnel Services – Employee Benefits

210 Group Insurance – Contracted Provider 3,222,305.67

220 Social Security Contributions 1,216,681.83

230 PSERS Retirement Contributions 5,647,168.90

240 Tuition Reimbursement 169,694.64

250 Unemployment Compensation 13,611.93

260 Workers' Compensation 90,947.47

270 Group Insurance – Self-Insurance 626,423.82

291 Other Retirement Plans 600.00

292 Health Savings Accounts 365,305.05

Total Personnel Services – Employee Benefits \$11,352,739.31

300 Purchased Professional and Technical Services

322 Professional Educational Services – Ius 46,201.10

329 Professional Educational Services – Other 81,520.50

330 Other Professional Services 1,673,284.54

340 Technical Services 275,562.78

360 Employee Training and Development Services 66,366.56

390 Other Purchased Professional and Technical Services 805.00

Total Purchased Professional and Technical Services \$2,143,740.48

400 Purchased Property Services

410 Cleaning Services 433,728.57

420 Utility Services 158,594.75

430 Repairs and Maintenance Services 515,321.72

440 Rentals 124,540.23

460 Extermination Services 12,014.60

490 Other Purchased Property Services 46,549.00

Total Purchased Property Services \$1,290,748.87

500 Other Purchased Services

513 Contracted Carriers 15,540.58

515 Public Carriers 2,000.00

516 Student Transportation Services From the IU 68,250.12

520 Insurance – General 79,930.00

522 Automotive Liability Insurance 54,664.00

523 General Property and Liability Insurance 211,685.00

530 Communications 261,599.43

541 Advertising Related to Federal Grant Awards 8,853.30

550 Printing and Binding 29,772.86

580 Travel 32,532.62

595 IU Payments By Withholding 81,575.67

Total Other Purchased Services \$846,403.58

LEA : 125237603 Radnor Township SD

Printed 2/10/2023 9:25:33 AM

General Fund (10)

2000 Support Services

Total

600 Supplies

610 General Supplies	1,010,105.69
620 Energy	938,724.94
630 Food	53,485.05
640 Books and Periodicals	108,818.25
650 Supplies & Fees – Technology Related	126,869.05

Total Supplies	\$2,238,002.98
-----------------------	-----------------------

700 Property

752 Capital Equipment – Original and Additional	29,387.01
756 Capitalized Technology Equipment – Original	276,723.12
762 Capitalized Equipment - Replacement	36,476.91
766 Capitalized Technology Equipment – Replacement	19,560.73

Total Property	\$362,147.77
-----------------------	---------------------

800 Other Objects

810 Dues and Fees	109,933.92
-------------------	------------

Total Other Objects	\$109,933.92
----------------------------	---------------------

Total 2000 Support Services	\$35,071,556.00
------------------------------------	------------------------

General Fund (10)

	<u>Elementary</u>	<u>Secondary</u>	<u>Federal</u>	<u>Total</u>
2100 Support Services – Students				
100 Personnel Services – Salaries				
100 Personnel Services – Salaries	981,699.07	1,508,894.72	154,656.20	2,902,198.79
Total Personnel Services – Salaries	\$981,699.07	\$1,508,894.72	\$154,656.20	\$2,902,198.79
200 Personnel Services – Employee Benefits				
210 Group Insurance – Contracted Provider	133,000.88	197,965.15	12,185.94	373,708.75
220 Social Security Contributions	72,976.45	117,267.36	4,655.72	214,958.16
230 PSERS Retirement Contributions	336,092.32	535,977.10	21,471.72	985,311.58
260 Workers' Compensation	5,522.17	8,527.15	1,106.05	16,139.55
270 Group Insurance – Self-Insurance	25,820.59	37,020.79	3,156.99	72,124.20
292 Health Savings Accounts	18,288.11	11,287.66		31,204.27
Total Personnel Services – Employee Benefits	\$591,700.52	\$908,045.21	\$42,576.42	\$1,693,446.51
300 Purchased Professional and Technical Services				
329 Professional Educational Services – Other		16,000.00		16,000.00
330 Other Professional Services	20,420.06	21,612.95	353,991.20	398,848.34
340 Technical Services	1,922.50	655.00		2,577.50
Total Purchased Professional and Technical Services	\$22,342.56	\$38,267.95	\$353,991.20	\$417,425.84
500 Other Purchased Services				
580 Travel	985.94	587.39		1,573.33
Total Other Purchased Services	\$985.94	\$587.39		\$1,573.33
600 Supplies				
610 General Supplies	9,075.57	12,803.08		21,878.65
630 Food	1,127.46	1,091.34		2,218.80
640 Books and Periodicals	287.77	53.74		341.51
Total Supplies	\$10,490.80	\$13,948.16		\$24,438.96
700 Property				
752 Capital Equipment – Original and Additional	2,697.70	2,307.50		5,005.20
Total Property	\$2,697.70	\$2,307.50		\$5,005.20
800 Other Objects				
810 Dues and Fees	1,510.14	4,738.46		6,478.60
Total Other Objects	\$1,510.14	\$4,738.46		\$6,478.60
Total 2100 Support Services – Students	\$1,611,426.73	\$2,476,789.39	\$551,223.82	\$5,050,567.23

General Fund (10)

2110 Supervision of Student Services

	<u>Elementary</u>	<u>Secondary</u>	<u>Federal</u>	<u>Total</u>
100 Personnel Services – Salaries				
100 Personnel Services – Salaries	386,958.60	376,121.45	7,000.00	770,080.05
Total Personnel Services – Salaries	\$386,958.60	\$376,121.45	\$7,000.00	\$770,080.05
200 Personnel Services – Employee Benefits				
210 Group Insurance – Contracted Provider	48,411.22	48,403.01		96,814.23
220 Social Security Contributions	28,511.33	27,672.85		56,184.18
230 PSERS Retirement Contributions	130,104.67	130,103.70		260,208.37
260 Workers' Compensation	1,380.38	1,393.95		2,774.33
270 Group Insurance – Self-Insurance	9,763.48	9,760.80		19,524.28
292 Health Savings Accounts	18,288.11	11,287.66		29,575.77
Total Personnel Services – Employee Benefits	\$236,459.19	\$228,621.97		\$465,081.16
300 Purchased Professional and Technical Services				
330 Other Professional Services	8,520.06	8,522.95	240,265.41	257,308.42
340 Technical Services	1,922.50	655.00		2,577.50
Total Purchased Professional and Technical Services	\$10,442.56	\$9,177.95	\$240,265.41	\$259,885.92
500 Other Purchased Services				
580 Travel	985.94	587.39		1,573.33
Total Other Purchased Services	\$985.94	\$587.39		\$1,573.33
600 Supplies				
610 General Supplies	937.94	962.30		1,900.24
630 Food	304.16	401.99		706.15
640 Books and Periodicals	36.60	32.76		69.36
Total Supplies	\$1,278.70	\$1,397.05		\$2,675.75
700 Property				
752 Capital Equipment – Original and Additional	2,697.70	2,307.50		5,005.20
Total Property	\$2,697.70	\$2,307.50		\$5,005.20
800 Other Objects				
810 Dues and Fees	1,425.00	1,425.00		2,850.00
Total Other Objects	\$1,425.00	\$1,425.00		\$2,850.00
Total 2110 Supervision of Student Services	\$640,247.69	\$619,638.31	\$247,265.41	\$1,507,151.41

General Fund (10)

	<u>Elementary</u>	<u>Secondary</u>	<u>Federal</u>	<u>Total</u>
2111 Supervision of Student Services – Head of Component				
100 Personnel Services – Salaries				
100 Personnel Services – Salaries	206,623.29	206,623.13	5,000.00	418,246.42
Total Personnel Services – Salaries	\$206,623.29	\$206,623.13	\$5,000.00	\$418,246.42
200 Personnel Services – Employee Benefits				
210 Group Insurance – Contracted Provider	32,473.85	32,465.48		64,939.33
220 Social Security Contributions	14,816.56	14,815.46		29,632.02
230 PSERS Retirement Contributions	71,337.34	71,336.62		142,673.96
260 Workers' Compensation	782.53	782.63		1,565.16
270 Group Insurance – Self-Insurance	6,027.77	6,025.25		12,053.02
292 Health Savings Accounts	11,173.18	4,173.17		15,346.35
Total Personnel Services – Employee Benefits	\$136,611.23	\$129,598.61		\$266,209.84
Total 2111 Supervision of Student Services – Head of Component	\$343,234.52	\$336,221.74	\$5,000.00	\$684,456.26

General Fund (10)

2119 Supervision of Student Services – All Other Supervision

	<u>Elementary</u>	<u>Secondary</u>	<u>Federal</u>	<u>Total</u>
100 Personnel Services – Salaries				
100 Personnel Services – Salaries	180,335.31	169,498.32	2,000.00	351,833.63
Total Personnel Services – Salaries	\$180,335.31	\$169,498.32	\$2,000.00	\$351,833.63
200 Personnel Services – Employee Benefits				
210 Group Insurance – Contracted Provider	15,937.37	15,937.53		31,874.90
220 Social Security Contributions	13,694.77	12,857.39		26,552.16
230 PSERS Retirement Contributions	58,767.33	58,767.08		117,534.41
260 Workers' Compensation	597.85	611.32		1,209.17
270 Group Insurance – Self-Insurance	3,735.71	3,735.55		7,471.26
292 Health Savings Accounts	7,114.93	7,114.49		14,229.42
Total Personnel Services – Employee Benefits	\$99,847.96	\$99,023.36		\$198,871.32
300 Purchased Professional and Technical Services				
330 Other Professional Services	8,520.06	8,522.95	240,265.41	257,308.42
340 Technical Services	1,922.50	655.00		2,577.50
Total Purchased Professional and Technical Services	\$10,442.56	\$9,177.95	\$240,265.41	\$259,885.92
500 Other Purchased Services				
580 Travel	985.94	587.39		1,573.33
Total Other Purchased Services	\$985.94	\$587.39		\$1,573.33
600 Supplies				
610 General Supplies	937.94	962.30		1,900.24
630 Food	304.16	401.99		706.15
640 Books and Periodicals	36.60	32.76		69.36
Total Supplies	\$1,278.70	\$1,397.05		\$2,675.75
700 Property				
752 Capital Equipment – Original and Additional	2,697.70	2,307.50		5,005.20
Total Property	\$2,697.70	\$2,307.50		\$5,005.20
800 Other Objects				
810 Dues and Fees	1,425.00	1,425.00		2,850.00
Total Other Objects	\$1,425.00	\$1,425.00		\$2,850.00
Total 2119 Supervision of Student Services – All Other Supervision	\$297,013.17	\$283,416.57	\$242,265.41	\$822,695.15

General Fund (10)

2120 Guidance Services

100 Personnel Services – Salaries

	<u>Elementary</u>	<u>Secondary</u>	<u>Federal</u>	<u>Total</u>
100 Personnel Services – Salaries	318,176.87	738,934.94	110,805.76	1,167,917.57
Total Personnel Services – Salaries	\$318,176.87	\$738,934.94	\$110,805.76	\$1,167,917.57

200 Personnel Services – Employee Benefits

210 Group Insurance – Contracted Provider	41,025.38	105,823.50	9,916.26	156,765.14
220 Social Security Contributions	23,873.15	59,995.30	3,619.12	87,487.57
230 PSERS Retirement Contributions	111,089.36	271,424.91	16,737.26	399,251.53
260 Workers' Compensation	2,189.04	4,747.54	862.18	7,798.76
270 Group Insurance – Self-Insurance	7,177.83	18,381.19	2,565.06	28,124.08
Total Personnel Services – Employee Benefits	\$185,354.76	\$460,372.44	\$33,699.88	\$679,427.08

300 Purchased Professional and Technical Services

329 Professional Educational Services – Other		16,000.00		16,000.00
330 Other Professional Services			113,725.79	113,725.79
Total Purchased Professional and Technical Services		\$16,000.00	\$113,725.79	\$129,725.79

600 Supplies

610 General Supplies	1,038.99	3,740.56		4,779.55
630 Food	823.30	689.35		1,512.65
640 Books and Periodicals	251.17	20.98		272.15
Total Supplies	\$2,113.46	\$4,450.89		\$6,564.35

800 Other Objects

810 Dues and Fees	85.14	3,313.46		3,398.60
Total Other Objects	\$85.14	\$3,313.46		\$3,398.60

Total 2120 Guidance Services

	\$505,730.23	\$1,223,071.73	\$258,231.43	\$1,987,033.39
--	---------------------	-----------------------	---------------------	-----------------------

General Fund (10)

	<u>Elementary</u>	<u>Secondary</u>	<u>Federal</u>	<u>Total</u>
2140 Psychological Services				
100 Personnel Services – Salaries				
100 Personnel Services – Salaries	276,563.60	393,838.33	6,000.00	676,401.93
Total Personnel Services – Salaries	\$276,563.60	\$393,838.33	\$6,000.00	\$676,401.93
200 Personnel Services – Employee Benefits				
210 Group Insurance – Contracted Provider	43,564.28	43,738.64		87,302.92
220 Social Security Contributions	20,591.97	29,599.21		50,191.18
230 PSERS Retirement Contributions	94,898.29	134,448.49		229,346.78
260 Workers' Compensation	1,952.75	2,385.66		4,338.41
270 Group Insurance – Self-Insurance	8,879.28	8,878.80		17,758.08
Total Personnel Services – Employee Benefits	\$169,886.57	\$219,050.80		\$388,937.37
300 Purchased Professional and Technical Services				
330 Other Professional Services	11,900.00	13,090.00		24,990.00
Total Purchased Professional and Technical Services	\$11,900.00	\$13,090.00		\$24,990.00
600 Supplies				
610 General Supplies	7,098.64	8,100.22		15,198.86
Total Supplies	\$7,098.64	\$8,100.22		\$15,198.86
Total 2140 Psychological Services	\$465,448.81	\$634,079.35	\$6,000.00	\$1,105,528.16

General Fund (10)

	<u>Elementary</u>	<u>Secondary</u>	<u>Federal</u>	<u>Total</u>
2160 Social Work Services				
100 Personnel Services – Salaries				
100 Personnel Services – Salaries			30,100.44	222,135.44
Total Personnel Services – Salaries			\$30,100.44	\$222,135.44
200 Personnel Services – Employee Benefits				
210 Group Insurance – Contracted Provider			2,269.68	24,111.30
220 Social Security Contributions			1,036.60	16,209.68
230 PSERS Retirement Contributions			4,734.46	74,818.97
260 Workers' Compensation			243.87	1,010.46
270 Group Insurance – Self-Insurance			591.93	5,031.48
Total Personnel Services – Employee Benefits			\$8,876.54	\$121,181.89
Total 2160 Social Work Services			\$38,976.98	\$343,317.33

General Fund (10)

	<u>Elementary</u>	<u>Secondary</u>	<u>Federal</u>	<u>Total</u>
2170 Student Accounting Services				
100 Personnel Services – Salaries				
100 Personnel Services – Salaries			750.00	65,663.80
Total Personnel Services – Salaries			\$750.00	\$65,663.80
200 Personnel Services – Employee Benefits				
210 Group Insurance – Contracted Provider				8,715.16
220 Social Security Contributions				4,885.55
230 PSERS Retirement Contributions				21,685.93
260 Workers' Compensation				217.59
270 Group Insurance – Self-Insurance				1,686.28
292 Health Savings Accounts				1,628.50
Total Personnel Services – Employee Benefits				\$38,819.01
300 Purchased Professional and Technical Services				
330 Other Professional Services				2,824.13
Total Purchased Professional and Technical Services				\$2,824.13
800 Other Objects				
810 Dues and Fees				230.00
Total Other Objects				\$230.00
Total 2170 Student Accounting Services			\$750.00	\$107,536.94

General Fund (10)

2200 Support Services – Instructional Staff

	<u>Elementary</u>	<u>Secondary</u>	<u>Federal</u>	<u>Total</u>
100 Personnel Services – Salaries				
100 Personnel Services – Salaries	1,492,814.47	848,781.13	26,800.00	2,368,395.60
Total Personnel Services – Salaries	\$1,492,814.47	\$848,781.13	\$26,800.00	\$2,368,395.60
200 Personnel Services – Employee Benefits				
210 Group Insurance – Contracted Provider	280,092.43	132,163.38		412,255.81
220 Social Security Contributions	109,970.52	61,150.45		171,120.97
230 PSERS Retirement Contributions	513,877.86	286,869.74		800,747.60
240 Tuition Reimbursement	94,232.28	34,461.36		128,693.64
260 Workers' Compensation	9,546.36	5,491.18		15,037.54
270 Group Insurance – Self-Insurance	53,339.14	25,858.23		79,197.37
292 Health Savings Accounts	14,313.69	14,383.52		28,697.21
Total Personnel Services – Employee Benefits	\$1,075,372.28	\$560,377.86		\$1,635,750.14
300 Purchased Professional and Technical Services				
322 Professional Educational Services – Ius			46,201.10	46,201.10
329 Professional Educational Services – Other	48,612.50	16,350.00		64,962.50
340 Technical Services		399.00		399.00
360 Employee Training and Development Services	26,712.23	23,339.33	16,315.00	66,366.56
Total Purchased Professional and Technical Services	\$75,324.73	\$40,088.33	\$62,516.10	\$177,929.16
400 Purchased Property Services				
430 Repairs and Maintenance Services	23,801.83	58,488.37		82,290.20
Total Purchased Property Services	\$23,801.83	\$58,488.37		\$82,290.20
500 Other Purchased Services				
580 Travel	3,588.19	2,877.37		6,465.56
Total Other Purchased Services	\$3,588.19	\$2,877.37		\$6,465.56
600 Supplies				
610 General Supplies	9,050.34	10,004.08		19,054.42
630 Food	5,533.82	4,163.48		9,697.30
640 Books and Periodicals	38,854.80	50,487.04		89,341.84
Total Supplies	\$53,438.96	\$64,654.60		\$118,093.56
800 Other Objects				
810 Dues and Fees	831.00	992.00		1,823.00
Total Other Objects	\$831.00	\$992.00		\$1,823.00
Total 2200 Support Services – Instructional Staff	\$2,725,171.46	\$1,576,259.66	\$89,316.10	\$4,390,747.22

General Fund (10)

	<u>Elementary</u>	<u>Secondary</u>	<u>Federal</u>	<u>Total</u>
2220 Technology Support Services				
100 Personnel Services – Salaries				
100 Personnel Services – Salaries	229,181.49	126,727.76	6,300.00	362,209.25
Total Personnel Services – Salaries	\$229,181.49	\$126,727.76	\$6,300.00	\$362,209.25
200 Personnel Services – Employee Benefits				
210 Group Insurance – Contracted Provider	58,645.47	14,376.78		73,022.25
220 Social Security Contributions	17,131.75	9,624.08		26,755.83
230 PSERS Retirement Contributions	78,046.46	41,801.17		119,847.63
260 Workers' Compensation	1,423.88	990.14		2,414.02
270 Group Insurance – Self-Insurance	11,783.07	2,995.78		14,778.85
292 Health Savings Accounts	2,239.96	2,310.03		4,549.99
Total Personnel Services – Employee Benefits	\$169,270.59	\$72,097.98		\$241,368.57
300 Purchased Professional and Technical Services				
340 Technical Services		399.00		399.00
Total Purchased Professional and Technical Services		\$399.00		\$399.00
500 Other Purchased Services				
580 Travel	552.78			552.78
Total Other Purchased Services	\$552.78			\$552.78
600 Supplies				
610 General Supplies	14.99	14.99		29.98
630 Food	207.44	17.50		224.94
640 Books and Periodicals	22.49			22.49
Total Supplies	\$244.92	\$32.49		\$277.41
800 Other Objects				
810 Dues and Fees		89.00		89.00
Total Other Objects		\$89.00		\$89.00
Total 2220 Technology Support Services	\$399,249.78	\$199,346.23	\$6,300.00	\$604,896.01

General Fund (10)

	<u>Elementary</u>	<u>Secondary</u>	<u>Federal</u>	<u>Total</u>
2250 School Library Services				
100 Personnel Services – Salaries				
100 Personnel Services – Salaries	489,114.83	228,085.34	11,000.00	728,200.17
Total Personnel Services – Salaries	\$489,114.83	\$228,085.34	\$11,000.00	\$728,200.17
200 Personnel Services – Employee Benefits				
210 Group Insurance – Contracted Provider	132,232.06	55,232.31		187,464.37
220 Social Security Contributions	36,852.78	16,289.46		53,142.24
230 PSERS Retirement Contributions	169,980.82	75,616.76		245,597.58
260 Workers' Compensation	2,234.53	1,163.76		3,398.29
270 Group Insurance – Self-Insurance	26,025.88	11,120.15		37,146.03
Total Personnel Services – Employee Benefits	\$367,326.07	\$159,422.44		\$526,748.51
400 Purchased Property Services				
430 Repairs and Maintenance Services	1,821.28	36,507.83		38,329.11
Total Purchased Property Services	\$1,821.28	\$36,507.83		\$38,329.11
600 Supplies				
610 General Supplies	3,382.15	7,752.02		11,134.17
640 Books and Periodicals	38,517.05	50,161.99		88,679.04
Total Supplies	\$41,899.20	\$57,914.01		\$99,813.21
Total 2250 School Library Services	\$900,161.38	\$481,929.62	\$11,000.00	\$1,393,091.00

General Fund (10)

2260 Instruction and Curriculum Development Services

	<u>Elementary</u>	<u>Secondary</u>	<u>Federal</u>	<u>Total</u>
100 Personnel Services – Salaries				
100 Personnel Services – Salaries	295,956.81	301,868.01	5,000.00	602,824.82
Total Personnel Services – Salaries	\$295,956.81	\$301,868.01	\$5,000.00	\$602,824.82
200 Personnel Services – Employee Benefits				
210 Group Insurance – Contracted Provider	21,846.32	48,594.52		70,440.84
220 Social Security Contributions	20,207.20	20,890.29		41,097.49
230 PSERS Retirement Contributions	99,914.05	102,808.48		202,722.53
260 Workers' Compensation	1,916.87	2,246.38		4,163.25
270 Group Insurance – Self-Insurance	4,095.35	8,723.40		12,818.75
292 Health Savings Accounts	12,073.73	12,073.49		24,147.22
Total Personnel Services – Employee Benefits	\$160,053.52	\$195,336.56		\$355,390.08
500 Other Purchased Services				
580 Travel	246.64	561.64		808.28
Total Other Purchased Services	\$246.64	\$561.64		\$808.28
600 Supplies				
610 General Supplies	350.73	321.40		672.13
630 Food	65.25	29.10		94.35
Total Supplies	\$415.98	\$350.50		\$766.48
800 Other Objects				
810 Dues and Fees		200.00		200.00
Total Other Objects		\$200.00		\$200.00
Total 2260 Instruction and Curriculum Development Services	\$456,672.95	\$498,316.71	\$5,000.00	\$959,989.66

General Fund (10)

2270 Instructional Staff Professional Development Services	<u>Elementary</u>	<u>Secondary</u>	<u>Federal</u>	<u>Total</u>
100 Personnel Services – Salaries				
100 Personnel Services – Salaries	424,172.66	118,838.92	4,500.00	547,511.58
Total Personnel Services – Salaries	\$424,172.66	\$118,838.92	\$4,500.00	\$547,511.58
200 Personnel Services – Employee Benefits				
210 Group Insurance – Contracted Provider	67,368.58	13,959.77		81,328.35
220 Social Security Contributions	31,724.35	8,887.57		40,611.92
230 PSERS Retirement Contributions	146,934.17	41,047.12		187,981.29
240 Tuition Reimbursement	94,232.28	34,461.36		128,693.64
260 Workers' Compensation	3,483.03	559.44		4,042.47
270 Group Insurance – Self-Insurance	11,434.84	3,018.90		14,453.74
Total Personnel Services – Employee Benefits	\$355,177.25	\$101,934.16		\$457,111.41
300 Purchased Professional and Technical Services				
322 Professional Educational Services – lus			46,201.10	46,201.10
329 Professional Educational Services – Other	48,612.50	16,350.00		64,962.50
360 Employee Training and Development Services	26,712.23	23,339.33	16,315.00	66,366.56
Total Purchased Professional and Technical Services	\$75,324.73	\$39,689.33	\$62,516.10	\$177,530.16
400 Purchased Property Services				
430 Repairs and Maintenance Services	21,980.55	21,980.54		43,961.09
Total Purchased Property Services	\$21,980.55	\$21,980.54		\$43,961.09
500 Other Purchased Services				
580 Travel	2,788.77	2,315.73		5,104.50
Total Other Purchased Services	\$2,788.77	\$2,315.73		\$5,104.50
600 Supplies				
610 General Supplies	5,302.47	1,915.67		7,218.14
630 Food	5,261.13	4,116.88		9,378.01
640 Books and Periodicals	315.26	325.05		640.31
Total Supplies	\$10,878.86	\$6,357.60		\$17,236.46
800 Other Objects				
810 Dues and Fees	831.00	703.00		1,534.00
Total Other Objects	\$831.00	\$703.00		\$1,534.00
Total 2270 Instructional Staff Professional Development Services	\$891,153.82	\$291,819.28	\$67,016.10	\$1,249,989.20

General Fund (10)

	<u>Elementary</u>	<u>Secondary</u>	<u>Federal</u>	<u>Total</u>
2290 Other Instructional Staff Services				
100 Personnel Services – Salaries				
100 Personnel Services – Salaries	54,388.68	73,261.10		127,649.78
Total Personnel Services – Salaries	\$54,388.68	\$73,261.10		\$127,649.78
200 Personnel Services – Employee Benefits				
220 Social Security Contributions	4,054.44	5,459.05		9,513.49
230 PSERS Retirement Contributions	19,002.36	25,596.21		44,598.57
260 Workers’ Compensation	488.05	531.46		1,019.51
Total Personnel Services – Employee Benefits	\$23,544.85	\$31,586.72		\$55,131.57
Total 2290 Other Instructional Staff Services	\$77,933.53	\$104,847.82		\$182,781.35

General Fund (10)

	<u>Elementary</u>	<u>Secondary</u>	<u>Federal</u>	<u>Total</u>
2300 Support Services – Administration				
100 Personnel Services – Salaries				
100 Personnel Services – Salaries	1,077,388.08	1,119,251.88	161,468.89	3,398,147.68
Total Personnel Services – Salaries	\$1,077,388.08	\$1,119,251.88	\$161,468.89	\$3,398,147.68
200 Personnel Services – Employee Benefits				
210 Group Insurance – Contracted Provider	178,369.55	155,607.09	17,429.55	492,655.81
220 Social Security Contributions	84,579.32	84,220.65	4,895.79	240,639.33
230 PSERS Retirement Contributions	389,965.49	376,635.95	22,278.75	1,133,332.58
260 Workers' Compensation	5,326.43	5,622.61	1,169.64	17,024.68
270 Group Insurance – Self-Insurance	32,966.60	30,508.22	4,578.75	96,816.20
292 Health Savings Accounts	32,215.38	38,474.93	6,379.03	121,291.46
Total Personnel Services – Employee Benefits	\$723,422.77	\$691,069.45	\$56,731.51	\$2,101,760.06
300 Purchased Professional and Technical Services				
329 Professional Educational Services – Other	184.14	373.86		558.00
330 Other Professional Services		6,952.44		412,175.14
340 Technical Services				3,158.86
390 Other Purchased Professional and Technical Services				805.00
Total Purchased Professional and Technical Services	\$184.14	\$7,326.30		\$416,697.00
400 Purchased Property Services				
430 Repairs and Maintenance Services		1,675.95		38,797.62
440 Rentals	57,946.15	57,946.15		115,892.30
Total Purchased Property Services	\$57,946.15	\$59,622.10		\$154,689.92
500 Other Purchased Services				
520 Insurance – General				11,822.50
530 Communications		12.61		4,212.61
541 Advertising Related to Federal Grant Awards				4,826.22
550 Printing and Binding		12,012.21		29,772.86
580 Travel	55.94	279.04		14,779.56
Total Other Purchased Services	\$55.94	\$12,303.86		\$65,413.75
600 Supplies				
610 General Supplies	4,887.15	19,440.81	9,795.97	56,945.39
630 Food	374.99	10,325.28		37,538.68
640 Books and Periodicals	356.91	1,032.20		18,937.33
Total Supplies	\$5,619.05	\$30,798.29	\$9,795.97	\$113,421.40
700 Property				
752 Capital Equipment – Original and Additional				99.99
Total Property				\$99.99
800 Other Objects				
810 Dues and Fees	3,549.37	3,179.58		55,468.75
Total Other Objects	\$3,549.37	\$3,179.58		\$55,468.75
Total 2300 Support Services – Administration	\$1,868,165.50	\$1,923,551.46	\$227,996.37	\$6,305,698.55

General Fund (10)

2310 Board Services

	<u>Elementary</u>	<u>Secondary</u>	<u>Federal</u>	<u>Total</u>
100 Personnel Services – Salaries				
100 Personnel Services – Salaries				9,798.94
Total Personnel Services – Salaries				\$9,798.94
200 Personnel Services – Employee Benefits				
220 Social Security Contributions				730.37
230 PSERS Retirement Contributions				3,423.75
260 Workers’ Compensation				88.18
292 Health Savings Accounts				276.29
Total Personnel Services – Employee Benefits				\$4,518.59
300 Purchased Professional and Technical Services				
330 Other Professional Services				40,275.00
Total Purchased Professional and Technical Services				\$40,275.00
500 Other Purchased Services				
520 Insurance – General				10,203.50
541 Advertising Related to Federal Grant Awards				2,667.92
580 Travel				5,747.03
Total Other Purchased Services				\$18,618.45
600 Supplies				
610 General Supplies				3,591.35
630 Food				15,144.63
Total Supplies				\$18,735.98
800 Other Objects				
810 Dues and Fees				29,055.42
Total Other Objects				\$29,055.42
Total 2310 Board Services				\$121,002.38

General Fund (10)

2320 Board Treasurer Services

Elementary

Secondary

Federal

Total

500 Other Purchased Services

520 Insurance – General

1,619.00

Total Other Purchased Services

\$1,619.00

Total 2320 Board Treasurer Services

\$1,619.00

General Fund (10)

	<u>Elementary</u>	<u>Secondary</u>	<u>Federal</u>	<u>Total</u>
2330 Tax Assessment and Collection Services				
100 Personnel Services – Salaries				
100 Personnel Services – Salaries			500.00	43,153.86
Total Personnel Services – Salaries			\$500.00	\$43,153.86
200 Personnel Services – Employee Benefits				
210 Group Insurance – Contracted Provider				11,351.93
220 Social Security Contributions				3,124.40
230 PSERS Retirement Contributions				13,955.11
260 Workers' Compensation				206.36
270 Group Insurance – Self-Insurance				2,219.82
292 Health Savings Accounts				872.24
Total Personnel Services – Employee Benefits				\$31,729.86
500 Other Purchased Services				
530 Communications				4,200.00
550 Printing and Binding				3,445.00
Total Other Purchased Services				\$7,645.00
600 Supplies				
610 General Supplies				569.44
Total Supplies				\$569.44
Total 2330 Tax Assessment and Collection Services			\$500.00	\$83,098.16

General Fund (10)

2350 Legal and Accounting Services

Elementary

Secondary

Federal

Total

300 Purchased Professional and Technical Services

330 Other Professional Services

286,843.00

Total Purchased Professional and Technical Services

\$286,843.00

Total 2350 Legal and Accounting Services

\$286,843.00

General Fund (10)

	<u>Elementary</u>	<u>Secondary</u>	<u>Federal</u>	<u>Total</u>
2370 Community Relations Services				
100 Personnel Services – Salaries				
100 Personnel Services – Salaries			1,000.00	166,202.74
Total Personnel Services – Salaries			\$1,000.00	\$166,202.74
200 Personnel Services – Employee Benefits				
210 Group Insurance – Contracted Provider				9,019.19
220 Social Security Contributions				12,908.55
230 PSERS Retirement Contributions				56,406.78
260 Workers' Compensation				795.11
270 Group Insurance – Self-Insurance				1,887.81
292 Health Savings Accounts				5,014.86
Total Personnel Services – Employee Benefits				\$86,032.30
300 Purchased Professional and Technical Services				
330 Other Professional Services				39,194.40
340 Technical Services				1,740.00
390 Other Purchased Professional and Technical Services				805.00
Total Purchased Professional and Technical Services				\$41,739.40
400 Purchased Property Services				
430 Repairs and Maintenance Services				5,103.99
Total Purchased Property Services				\$5,103.99
500 Other Purchased Services				
541 Advertising Related to Federal Grant Awards				1,672.03
550 Printing and Binding				14,315.65
580 Travel				1,040.90
Total Other Purchased Services				\$17,028.58
600 Supplies				
610 General Supplies				646.26
630 Food				781.83
640 Books and Periodicals				1,843.32
Total Supplies				\$3,271.41
700 Property				
752 Capital Equipment – Original and Additional				99.99
Total Property				\$99.99
800 Other Objects				
810 Dues and Fees				1,165.00
Total Other Objects				\$1,165.00
Total 2370 Community Relations Services			\$1,000.00	\$320,643.41

General Fund (10)

2380 Office of the Principal Services

	<u>Elementary</u>	<u>Secondary</u>	<u>Federal</u>	<u>Total</u>
100 Personnel Services – Salaries				
100 Personnel Services – Salaries	1,077,388.08	1,119,251.88	153,968.89	2,350,608.85
Total Personnel Services – Salaries	\$1,077,388.08	\$1,119,251.88	\$153,968.89	\$2,350,608.85
200 Personnel Services – Employee Benefits				
210 Group Insurance – Contracted Provider	178,369.55	155,607.09	17,429.55	351,406.19
220 Social Security Contributions	84,579.32	84,220.65	4,895.79	173,695.76
230 PSERS Retirement Contributions	389,965.49	376,635.95	22,278.75	788,880.19
260 Workers' Compensation	5,326.43	5,622.61	1,169.64	12,118.68
270 Group Insurance – Self-Insurance	32,966.60	30,508.22	4,578.75	68,053.57
292 Health Savings Accounts	32,215.38	38,474.93	6,379.03	77,069.34
Total Personnel Services – Employee Benefits	\$723,422.77	\$691,069.45	\$56,731.51	\$1,471,223.73
300 Purchased Professional and Technical Services				
329 Professional Educational Services – Other	184.14	373.86		558.00
330 Other Professional Services		6,952.44		6,952.44
Total Purchased Professional and Technical Services	\$184.14	\$7,326.30		\$7,510.44
400 Purchased Property Services				
430 Repairs and Maintenance Services		1,675.95		1,675.95
440 Rentals	57,946.15	57,946.15		115,892.30
Total Purchased Property Services	\$57,946.15	\$59,622.10		\$117,568.25
500 Other Purchased Services				
530 Communications		12.61		12.61
550 Printing and Binding		12,012.21		12,012.21
580 Travel	55.94	279.04		334.98
Total Other Purchased Services	\$55.94	\$12,303.86		\$12,359.80
600 Supplies				
610 General Supplies	4,887.15	19,440.81		24,327.96
630 Food	374.99	10,325.28		10,700.27
640 Books and Periodicals	356.91	1,032.20		1,389.11
Total Supplies	\$5,619.05	\$30,798.29		\$36,417.34
800 Other Objects				
810 Dues and Fees	3,549.37	3,179.58		6,728.95
Total Other Objects	\$3,549.37	\$3,179.58		\$6,728.95
Total 2380 Office of the Principal Services	\$1,868,165.50	\$1,923,551.46	\$210,700.40	\$4,002,417.36

General Fund (10)

	<u>Elementary</u>	<u>Secondary</u>	<u>Federal</u>	<u>Total</u>
2390 Other Administration Services				
100 Personnel Services – Salaries				
100 Personnel Services – Salaries				3,915.00
Total Personnel Services – Salaries				\$3,915.00
200 Personnel Services – Employee Benefits				
220 Social Security Contributions				295.51
230 PSERS Retirement Contributions				1,367.90
260 Workers’ Compensation				35.23
Total Personnel Services – Employee Benefits				\$1,698.64
800 Other Objects				
810 Dues and Fees				9,350.00
Total Other Objects				\$9,350.00
Total 2390 Other Administration Services				\$14,963.64

General Fund (10)

	<u>Elementary</u>	<u>Secondary</u>	<u>Federal</u>	<u>Total</u>
2400 Support Services – Pupil Health				
100 Personnel Services – Salaries				
100 Personnel Services – Salaries			13,000.00	606,183.44
Total Personnel Services – Salaries			\$13,000.00	\$606,183.44
200 Personnel Services – Employee Benefits				
210 Group Insurance – Contracted Provider				139,237.17
220 Social Security Contributions				44,487.75
230 PSERS Retirement Contributions				209,164.70
260 Workers' Compensation				3,397.55
270 Group Insurance – Self-Insurance				26,502.65
Total Personnel Services – Employee Benefits				\$422,789.82
300 Purchased Professional and Technical Services				
330 Other Professional Services				378,271.24
Total Purchased Professional and Technical Services				\$378,271.24
400 Purchased Property Services				
430 Repairs and Maintenance Services				1,050.00
Total Purchased Property Services				\$1,050.00
500 Other Purchased Services				
530 Communications				48.54
580 Travel				355.60
Total Other Purchased Services				\$404.14
600 Supplies				
610 General Supplies				13,645.11
630 Food				370.84
Total Supplies				\$14,015.95
700 Property				
752 Capital Equipment – Original and Additional				9,312.56
762 Capitalized Equipment - Replacement				4,662.35
Total Property				\$13,974.91
Total 2400 Support Services – Pupil Health			\$13,000.00	\$1,436,689.50

General Fund (10)

2420 Medical Services

Elementary

Secondary

Federal

Total

300 Purchased Professional and Technical Services

330 Other Professional Services

6,000.00

Total Purchased Professional and Technical Services

\$6,000.00

Total 2420 Medical Services

\$6,000.00

General Fund (10)

2440 Nursing Services

	<u>Elementary</u>	<u>Secondary</u>	<u>Federal</u>	<u>Total</u>
100 Personnel Services – Salaries				
100 Personnel Services – Salaries			13,000.00	606,183.44
Total Personnel Services – Salaries			\$13,000.00	\$606,183.44
200 Personnel Services – Employee Benefits				
210 Group Insurance – Contracted Provider				139,237.17
220 Social Security Contributions				44,487.75
230 PSERS Retirement Contributions				209,164.70
260 Workers' Compensation				3,397.55
270 Group Insurance – Self-Insurance				26,502.65
Total Personnel Services – Employee Benefits				\$422,789.82
300 Purchased Professional and Technical Services				
330 Other Professional Services				372,271.24
Total Purchased Professional and Technical Services				\$372,271.24
400 Purchased Property Services				
430 Repairs and Maintenance Services				1,050.00
Total Purchased Property Services				\$1,050.00
500 Other Purchased Services				
530 Communications				48.54
580 Travel				355.60
Total Other Purchased Services				\$404.14
600 Supplies				
610 General Supplies				13,645.11
630 Food				370.84
Total Supplies				\$14,015.95
700 Property				
752 Capital Equipment – Original and Additional				9,312.56
762 Capitalized Equipment - Replacement				4,662.35
Total Property				\$13,974.91
Total 2440 Nursing Services			\$13,000.00	\$1,430,689.50

General Fund (10)

	<u>Elementary</u>	<u>Secondary</u>	<u>Federal</u>	<u>Total</u>
2500 Support Services – Business				
100 Personnel Services – Salaries				
100 Personnel Services – Salaries			6,500.00	606,582.76
Total Personnel Services – Salaries			\$6,500.00	\$606,582.76
200 Personnel Services – Employee Benefits				
210 Group Insurance – Contracted Provider				94,994.72
220 Social Security Contributions				43,817.39
230 PSERS Retirement Contributions				204,117.45
260 Workers' Compensation				5,580.68
270 Group Insurance – Self-Insurance				21,397.91
291 Other Retirement Plans				600.00
292 Health Savings Accounts				57,227.46
Total Personnel Services – Employee Benefits				\$427,735.61
300 Purchased Professional and Technical Services				
330 Other Professional Services				6,801.72
Total Purchased Professional and Technical Services				\$6,801.72
400 Purchased Property Services				
440 Rentals				3,840.70
Total Purchased Property Services				\$3,840.70
500 Other Purchased Services				
520 Insurance – General				68,107.50
530 Communications				21,442.40
541 Advertising Related to Federal Grant Awards				4,027.08
580 Travel				1,327.39
Total Other Purchased Services				\$94,904.37
600 Supplies				
610 General Supplies				7,205.57
630 Food				633.25
640 Books and Periodicals				122.21
Total Supplies				\$7,961.03
800 Other Objects				
810 Dues and Fees				1,659.28
Total Other Objects				\$1,659.28
Total 2500 Support Services – Business			\$6,500.00	\$1,149,485.47

General Fund (10)

2510 Fiscal Services

Elementary Secondary Federal Total

100	<u>Personnel Services – Salaries</u>			
	100 Personnel Services – Salaries			6,500.00 606,582.76
Total Personnel Services – Salaries				\$6,500.00 \$606,582.76
200	<u>Personnel Services – Employee Benefits</u>			
	210 Group Insurance – Contracted Provider			94,994.72
	220 Social Security Contributions			43,817.39
	230 PSERS Retirement Contributions			204,117.45
	260 Workers' Compensation			5,580.68
	270 Group Insurance – Self-Insurance			21,397.91
	291 Other Retirement Plans			600.00
	292 Health Savings Accounts			57,227.46
Total Personnel Services – Employee Benefits				\$427,735.61
300	<u>Purchased Professional and Technical Services</u>			
	330 Other Professional Services			6,801.72
Total Purchased Professional and Technical Services				\$6,801.72
400	<u>Purchased Property Services</u>			
	440 Rentals			3,840.70
Total Purchased Property Services				\$3,840.70
500	<u>Other Purchased Services</u>			
	520 Insurance – General			68,107.50
	530 Communications			21,442.40
	541 Advertising Related to Federal Grant Awards			4,027.08
	580 Travel			1,327.39
Total Other Purchased Services				\$94,904.37
600	<u>Supplies</u>			
	610 General Supplies			7,205.57
	630 Food			633.25
	640 Books and Periodicals			122.21
Total Supplies				\$7,961.03
800	<u>Other Objects</u>			
	810 Dues and Fees			1,659.28
Total Other Objects				\$1,659.28
Total 2510 Fiscal Services			\$6,500.00 \$1,149,485.47	

General Fund (10)

2511 Supervision of Fiscal Services - Head of Component

100 Personnel Services – Salaries

	<u>Elementary</u>	<u>Secondary</u>	<u>Federal</u>	<u>Total</u>
100 Personnel Services – Salaries			2,500.00	335,705.09
Total Personnel Services – Salaries			\$2,500.00	\$335,705.09

200 Personnel Services – Employee Benefits

210 Group Insurance – Contracted Provider				52,458.48
220 Social Security Contributions				21,976.73
230 PSERS Retirement Contributions				104,994.12
260 Workers' Compensation				2,998.82
270 Group Insurance – Self-Insurance				10,743.72
291 Other Retirement Plans				600.00
292 Health Savings Accounts				50,773.24
Total Personnel Services – Employee Benefits				\$244,545.11

Total 2511 Supervision of Fiscal Services - Head of Component

			\$2,500.00	\$580,250.20
--	--	--	-------------------	---------------------

General Fund (10)

2514 Payroll Services

100 Personnel Services – Salaries

	<u>Elementary</u>	<u>Secondary</u>	<u>Federal</u>	<u>Total</u>
100 Personnel Services – Salaries			1,000.00	58,169.44
Total Personnel Services – Salaries			\$1,000.00	\$58,169.44

200 Personnel Services – Employee Benefits

210 Group Insurance – Contracted Provider				8,445.86
220 Social Security Contributions				4,363.76
230 PSERS Retirement Contributions				19,872.85
260 Workers' Compensation				514.47
270 Group Insurance – Self-Insurance				1,886.88

Total Personnel Services – Employee Benefits				\$35,083.82
Total 2514 Payroll Services			\$1,000.00	\$93,253.26

General Fund (10)

2515 Financial Accounting Services	<u>Elementary</u>	<u>Secondary</u>	<u>Federal</u>	<u>Total</u>
100 Personnel Services – Salaries				
100 Personnel Services – Salaries			1,000.00	112,500.59
Total Personnel Services – Salaries			\$1,000.00	\$112,500.59
200 Personnel Services – Employee Benefits				
210 Group Insurance – Contracted Provider				18,356.39
220 Social Security Contributions				9,992.04
230 PSERS Retirement Contributions				45,082.64
260 Workers' Compensation				1,183.41
270 Group Insurance – Self-Insurance				3,051.18
292 Health Savings Accounts				6,454.22
Total Personnel Services – Employee Benefits				\$84,119.88
Total 2515 Financial Accounting Services			\$1,000.00	\$196,620.47

General Fund (10)

	<u>Elementary</u>	<u>Secondary</u>	<u>Federal</u>	<u>Total</u>
2519 Other Fiscal Services				
100 Personnel Services – Salaries				
100 Personnel Services – Salaries			2,000.00	100,207.64
Total Personnel Services – Salaries			\$2,000.00	\$100,207.64
200 Personnel Services – Employee Benefits				
210 Group Insurance – Contracted Provider				15,733.99
220 Social Security Contributions				7,484.86
230 PSERS Retirement Contributions				34,167.84
260 Workers' Compensation				883.98
270 Group Insurance – Self-Insurance				5,716.13
Total Personnel Services – Employee Benefits				\$63,986.80
300 Purchased Professional and Technical Services				
330 Other Professional Services				6,801.72
Total Purchased Professional and Technical Services				\$6,801.72
400 Purchased Property Services				
440 Rentals				3,840.70
Total Purchased Property Services				\$3,840.70
500 Other Purchased Services				
520 Insurance – General				68,107.50
530 Communications				21,442.40
541 Advertising Related to Federal Grant Awards				4,027.08
580 Travel				1,327.39
Total Other Purchased Services				\$94,904.37
600 Supplies				
610 General Supplies				7,205.57
630 Food				633.25
640 Books and Periodicals				122.21
Total Supplies				\$7,961.03
800 Other Objects				
810 Dues and Fees				1,659.28
Total Other Objects				\$1,659.28
Total 2519 Other Fiscal Services			\$2,000.00	\$279,361.54

General Fund (10)

2610 Supervision of Operation and Maintenance of Plant Services

	<u>Elementary</u>	<u>Secondary</u>	<u>Federal</u>	<u>Total</u>
100 Personnel Services – Salaries				
100 Personnel Services – Salaries			3,000.00	290,132.02
Total Personnel Services – Salaries			\$3,000.00	\$290,132.02
200 Personnel Services – Employee Benefits				
210 Group Insurance – Contracted Provider				41,332.85
220 Social Security Contributions				21,800.28
230 PSERS Retirement Contributions				100,192.41
260 Workers' Compensation				2,076.55
270 Group Insurance – Self-Insurance				7,718.04
292 Health Savings Accounts				11,410.35
Total Personnel Services – Employee Benefits				\$184,530.48
300 Purchased Professional and Technical Services				
330 Other Professional Services				63,309.52
Total Purchased Professional and Technical Services				\$63,309.52
400 Purchased Property Services				
410 Cleaning Services				432,026.57
420 Utility Services				158,594.75
430 Repairs and Maintenance Services				337,156.44
440 Rentals				4,807.23
460 Extermination Services				12,014.60
490 Other Purchased Property Services				46,549.00
Total Purchased Property Services				\$991,148.59
500 Other Purchased Services				
523 General Property and Liability Insurance				211,685.00
530 Communications				222,570.62
580 Travel				2,217.65
Total Other Purchased Services				\$436,473.27
600 Supplies				
610 General Supplies	328,933.11	298,680.37		627,613.48
620 Energy				764,313.73
630 Food				2,682.63
650 Supplies & Fees – Technology Related				8,345.00
Total Supplies	\$328,933.11	\$298,680.37		\$1,402,954.84
700 Property				
762 Capitalized Equipment - Replacement				31,590.56
Total Property				\$31,590.56
800 Other Objects				
810 Dues and Fees				38,457.44
Total Other Objects				\$38,457.44
Total 2610 Supervision of Operation and Maintenance of Plant Services	\$328,933.11	\$298,680.37	\$3,000.00	\$3,438,596.72

General Fund (10)

2611 Supervision of Operation and Maintenance of Plant Services – Head of Component	<u>Elementary</u>	<u>Secondary</u>	<u>Federal</u>	<u>Total</u>
100 Personnel Services – Salaries				
100 Personnel Services – Salaries			2,000.00	192,786.16
Total Personnel Services – Salaries			\$2,000.00	\$192,786.16
200 Personnel Services – Employee Benefits				
210 Group Insurance – Contracted Provider				21,742.39
220 Social Security Contributions				14,482.82
230 PSERS Retirement Contributions				66,529.17
260 Workers' Compensation				1,593.00
270 Group Insurance – Self-Insurance				4,666.86
292 Health Savings Accounts				6,593.07
Total Personnel Services – Employee Benefits				\$115,607.31
Total 2611 Supervision of Operation and Maintenance of Plant Services – Head of Component			\$2,000.00	\$308,393.47

General Fund (10)

2619 Supervision of Operation and Maintenance of Plant Services – All Other Supervision

	<u>Elementary</u>	<u>Secondary</u>	<u>Federal</u>	<u>Total</u>
100 Personnel Services – Salaries				
100 Personnel Services – Salaries			1,000.00	97,345.86
Total Personnel Services – Salaries			\$1,000.00	\$97,345.86
200 Personnel Services – Employee Benefits				
210 Group Insurance – Contracted Provider				19,590.46
220 Social Security Contributions				7,317.46
230 PSERS Retirement Contributions				33,663.24
260 Workers' Compensation				483.55
270 Group Insurance – Self-Insurance				3,051.18
292 Health Savings Accounts				4,817.28
Total Personnel Services – Employee Benefits				\$68,923.17
300 Purchased Professional and Technical Services				
330 Other Professional Services				63,309.52
Total Purchased Professional and Technical Services				\$63,309.52
400 Purchased Property Services				
410 Cleaning Services				432,026.57
420 Utility Services				158,594.75
430 Repairs and Maintenance Services				337,156.44
440 Rentals				4,807.23
460 Extermination Services				12,014.60
490 Other Purchased Property Services				46,549.00
Total Purchased Property Services				\$991,148.59
500 Other Purchased Services				
523 General Property and Liability Insurance				211,685.00
530 Communications				222,570.62
580 Travel				2,217.65
Total Other Purchased Services				\$436,473.27
600 Supplies				
610 General Supplies	328,933.11	298,680.37		627,613.48
620 Energy				764,313.73
630 Food				2,682.63
650 Supplies & Fees – Technology Related				8,345.00
Total Supplies	\$328,933.11	\$298,680.37		\$1,402,954.84
700 Property				
762 Capitalized Equipment - Replacement				31,590.56
Total Property				\$31,590.56
800 Other Objects				
810 Dues and Fees				38,457.44
Total Other Objects				\$38,457.44
Total 2619 Supervision of Operation and Maintenance of Plant Services – All Other Supervision	\$328,933.11	\$298,680.37	\$1,000.00	\$3,130,203.25

General Fund (10)

	<u>Elementary</u>	<u>Secondary</u>	<u>Federal</u>	<u>Total</u>
2620 Operation of Buildings Services				
100 Personnel Services – Salaries				
100 Personnel Services – Salaries			47,000.00	2,985,230.50
Total Personnel Services – Salaries			\$47,000.00	\$2,985,230.50
200 Personnel Services – Employee Benefits				
210 Group Insurance – Contracted Provider				695,080.14
220 Social Security Contributions				220,826.75
230 PSERS Retirement Contributions				1,017,225.33
250 Unemployment Compensation				13,611.93
260 Workers' Compensation				15,466.38
270 Group Insurance – Self-Insurance				141,440.30
292 Health Savings Accounts				64,028.48
Total Personnel Services – Employee Benefits				\$2,167,679.31
Total 2620 Operation of Buildings Services			\$47,000.00	\$5,152,909.81

General Fund (10)

	<u>Elementary</u>	<u>Secondary</u>	<u>Federal</u>	<u>Total</u>
2660 Safety and Security Services				
100 Personnel Services – Salaries				
100 Personnel Services – Salaries			5,000.00	234,792.01
Total Personnel Services – Salaries			\$5,000.00	\$234,792.01
200 Personnel Services – Employee Benefits				
210 Group Insurance – Contracted Provider				35,306.27
220 Social Security Contributions				17,355.31
230 PSERS Retirement Contributions				77,396.40
260 Workers' Compensation				710.62
270 Group Insurance – Self-Insurance				6,427.47
292 Health Savings Accounts				4,930.71
Total Personnel Services – Employee Benefits				\$142,126.78
300 Purchased Professional and Technical Services				
330 Other Professional Services				342,306.69
Total Purchased Professional and Technical Services				\$342,306.69
400 Purchased Property Services				
430 Repairs and Maintenance Services				4,374.00
Total Purchased Property Services				\$4,374.00
500 Other Purchased Services				
580 Travel				1,734.46
Total Other Purchased Services				\$1,734.46
600 Supplies				
610 General Supplies	3,897.16	3,538.72		7,435.88
Total Supplies	\$3,897.16	\$3,538.72		\$7,435.88
700 Property				
752 Capital Equipment – Original and Additional				8,905.34
762 Capitalized Equipment - Replacement				224.00
Total Property				\$9,129.34
800 Other Objects				
810 Dues and Fees				4,515.00
Total Other Objects				\$4,515.00
Total 2660 Safety and Security Services	\$3,897.16	\$3,538.72	\$5,000.00	\$746,414.16

General Fund (10)

	<u>Elementary</u>	<u>Secondary</u>	<u>Federal</u>	<u>Total</u>
2700 Student Transportation Services				
100 Personnel Services – Salaries				
100 Personnel Services – Salaries			60,000.00	2,527,325.26
Total Personnel Services – Salaries			\$60,000.00	\$2,527,325.26
200 Personnel Services – Employee Benefits				
210 Group Insurance – Contracted Provider				807,965.08
220 Social Security Contributions				181,220.11
230 PSERS Retirement Contributions				842,898.83
260 Workers' Compensation				11,251.64
270 Group Insurance – Self-Insurance				148,806.57
292 Health Savings Accounts				19,856.09
Total Personnel Services – Employee Benefits				\$2,011,998.32
300 Purchased Professional and Technical Services				
330 Other Professional Services				5,464.14
340 Technical Services				68,228.28
Total Purchased Professional and Technical Services				\$73,692.42
400 Purchased Property Services				
410 Cleaning Services				1,702.00
430 Repairs and Maintenance Services				8,791.70
Total Purchased Property Services				\$10,493.70
500 Other Purchased Services				
513 Contracted Carriers				15,540.58
515 Public Carriers				2,000.00
516 Student Transportation Services From the IU				68,250.12
522 Automotive Liability Insurance				54,664.00
530 Communications				13,325.26
580 Travel				2,095.69
Total Other Purchased Services				\$155,875.65
600 Supplies				
610 General Supplies				238,575.09
620 Energy				174,411.21
630 Food				149.98
650 Supplies & Fees – Technology Related				40,338.80
Total Supplies				\$453,475.08
700 Property				
752 Capital Equipment – Original and Additional				5,592.90
Total Property				\$5,592.90
800 Other Objects				
810 Dues and Fees				151.43
Total Other Objects				\$151.43
Total 2700 Student Transportation Services			\$60,000.00	\$5,238,604.76

General Fund (10)

	<u>Elementary</u>	<u>Secondary</u>	<u>Federal</u>	<u>Total</u>
2710 Supervision of Student Transportation Services				
100 Personnel Services – Salaries				
100 Personnel Services – Salaries			2,000.00	203,293.92
Total Personnel Services – Salaries			\$2,000.00	\$203,293.92
200 Personnel Services – Employee Benefits				
210 Group Insurance – Contracted Provider				36,767.80
220 Social Security Contributions				15,186.17
230 PSERS Retirement Contributions				64,737.62
260 Workers' Compensation				1,297.77
270 Group Insurance – Self-Insurance				10,415.70
292 Health Savings Accounts				1,346.95
Total Personnel Services – Employee Benefits				\$129,752.01
300 Purchased Professional and Technical Services				
330 Other Professional Services				5,464.14
340 Technical Services				68,228.28
Total Purchased Professional and Technical Services				\$73,692.42
400 Purchased Property Services				
410 Cleaning Services				1,702.00
430 Repairs and Maintenance Services				5,367.84
Total Purchased Property Services				\$7,069.84
500 Other Purchased Services				
513 Contracted Carriers				14,863.54
515 Public Carriers				2,000.00
516 Student Transportation Services From the IU				68,250.12
522 Automotive Liability Insurance				54,664.00
530 Communications				13,325.26
580 Travel				2,095.69
Total Other Purchased Services				\$155,198.61
600 Supplies				
610 General Supplies				238,575.09
620 Energy				174,411.21
630 Food				149.98
650 Supplies & Fees – Technology Related				40,338.80
Total Supplies				\$453,475.08
700 Property				
752 Capital Equipment – Original and Additional				5,592.90
Total Property				\$5,592.90
800 Other Objects				
810 Dues and Fees				151.43
Total Other Objects				\$151.43
Total 2710 Supervision of Student Transportation Services			\$2,000.00	\$1,028,226.21

General Fund (10)

2711 Supervision of Student Transportation Services – Head of Component	<u>Elementary</u>	<u>Secondary</u>	<u>Federal</u>	<u>Total</u>
100 Personnel Services – Salaries				
100 Personnel Services – Salaries			2,000.00	203,293.92
Total Personnel Services – Salaries			\$2,000.00	\$203,293.92
200 Personnel Services – Employee Benefits				
210 Group Insurance – Contracted Provider				36,767.80
220 Social Security Contributions				15,186.17
230 PSERS Retirement Contributions				64,737.62
260 Workers' Compensation				1,297.77
270 Group Insurance – Self-Insurance				10,415.70
292 Health Savings Accounts				1,346.95
Total Personnel Services – Employee Benefits				\$129,752.01
Total 2711 Supervision of Student Transportation Services – Head of Component			\$2,000.00	\$333,045.93

General Fund (10)

	<u>Elementary</u>	<u>Secondary</u>	<u>Federal</u>	<u>Total</u>
2719 Supervision of Student Transportation Services – All Other Supervision				
300 <u>Purchased Professional and Technical Services</u>				
330 Other Professional Services				5,464.14
340 Technical Services				68,228.28
Total Purchased Professional and Technical Services				\$73,692.42
400 <u>Purchased Property Services</u>				
410 Cleaning Services				1,702.00
430 Repairs and Maintenance Services				5,367.84
Total Purchased Property Services				\$7,069.84
500 <u>Other Purchased Services</u>				
513 Contracted Carriers				14,863.54
515 Public Carriers				2,000.00
516 Student Transportation Services From the IU				68,250.12
522 Automotive Liability Insurance				54,664.00
530 Communications				13,325.26
580 Travel				2,095.69
Total Other Purchased Services				\$155,198.61
600 <u>Supplies</u>				
610 General Supplies				238,575.09
620 Energy				174,411.21
630 Food				149.98
650 Supplies & Fees – Technology Related				40,338.80
Total Supplies				\$453,475.08
700 <u>Property</u>				
752 Capital Equipment – Original and Additional				5,592.90
Total Property				\$5,592.90
800 <u>Other Objects</u>				
810 Dues and Fees				151.43
Total Other Objects				\$151.43
Total 2719 Supervision of Student Transportation Services – All Other Supervision				\$695,180.28

General Fund (10)

2720 Vehicle Operation Services

100 Personnel Services – Salaries

	<u>Elementary</u>	<u>Secondary</u>	<u>Federal</u>	<u>Total</u>
100 Personnel Services – Salaries			46,000.00	1,913,747.77
Total Personnel Services – Salaries			\$46,000.00	\$1,913,747.77

200 Personnel Services – Employee Benefits

210 Group Insurance – Contracted Provider				674,946.74
220 Social Security Contributions				137,063.59
230 PSERS Retirement Contributions				644,411.69
260 Workers' Compensation				7,831.42
270 Group Insurance – Self-Insurance				118,174.47
292 Health Savings Accounts				1,804.32
Total Personnel Services – Employee Benefits				\$1,584,232.23

500 Other Purchased Services

513 Contracted Carriers				677.04
Total Other Purchased Services				\$677.04

Total 2720 Vehicle Operation Services			\$46,000.00	\$3,498,657.04
--	--	--	--------------------	-----------------------

General Fund (10)

2730 Monitoring Services

100 Personnel Services – Salaries

	<u>Elementary</u>	<u>Secondary</u>	<u>Federal</u>	<u>Total</u>
100 Personnel Services – Salaries			9,000.00	184,408.19
Total Personnel Services – Salaries			\$9,000.00	\$184,408.19

200 Personnel Services – Employee Benefits

210 Group Insurance – Contracted Provider				60,475.36
220 Social Security Contributions				12,285.01
230 PSERS Retirement Contributions				58,343.28
260 Workers' Compensation				725.15
270 Group Insurance – Self-Insurance				14,299.44
Total Personnel Services – Employee Benefits				\$146,128.24

Total 2730 Monitoring Services

Total 2730 Monitoring Services			\$9,000.00	\$330,536.43
---------------------------------------	--	--	-------------------	---------------------

General Fund (10)

2740 Vehicle Servicing and Maintenance Services

Elementary

Secondary

Federal

Total

100 Personnel Services – Salaries

100 Personnel Services – Salaries

3,000.00

225,875.38

Total Personnel Services – Salaries

\$3,000.00

\$225,875.38

200 Personnel Services – Employee Benefits

210 Group Insurance – Contracted Provider

35,775.18

220 Social Security Contributions

16,685.34

230 PSERS Retirement Contributions

75,406.24

260 Workers' Compensation

1,397.30

270 Group Insurance – Self-Insurance

5,916.96

292 Health Savings Accounts

16,704.82

Total Personnel Services – Employee Benefits

\$151,885.84

Total 2740 Vehicle Servicing and Maintenance Services

\$3,000.00

\$377,761.22

General Fund (10)

2750 Nonpublic Transportation

Elementary

Secondary

Federal

Total

400 Purchased Property Services

430 Repairs and Maintenance Services

3,423.86

Total Purchased Property Services

\$3,423.86

Total 2750 Nonpublic Transportation

\$3,423.86

General Fund (10)

	<u>Elementary</u>	<u>Secondary</u>	<u>Federal</u>	<u>Total</u>
2800 Support Services – Central				
100 Personnel Services – Salaries				
100 Personnel Services – Salaries			7,950.00	808,851.03
Total Personnel Services – Salaries			\$7,950.00	\$808,851.03
200 Personnel Services – Employee Benefits				
210 Group Insurance – Contracted Provider				129,769.07
220 Social Security Contributions				60,455.78
230 PSERS Retirement Contributions				276,782.02
240 Tuition Reimbursement				41,001.00
260 Workers' Compensation				4,262.28
270 Group Insurance – Self-Insurance				25,993.11
292 Health Savings Accounts				26,659.02
Total Personnel Services – Employee Benefits				\$564,922.28
300 Purchased Professional and Technical Services				
330 Other Professional Services				66,107.75
340 Technical Services				201,199.14
Total Purchased Professional and Technical Services				\$267,306.89
400 Purchased Property Services				
430 Repairs and Maintenance Services				42,861.76
Total Purchased Property Services				\$42,861.76
500 Other Purchased Services				
580 Travel				1,983.38
Total Other Purchased Services				\$1,983.38
600 Supplies				
610 General Supplies				17,752.10
630 Food				193.57
640 Books and Periodicals				75.36
650 Supplies & Fees – Technology Related				78,185.25
Total Supplies				\$96,206.28
700 Property				
752 Capital Equipment – Original and Additional				471.02
756 Capitalized Technology Equipment – Original			143,107.20	276,723.12
766 Capitalized Technology Equipment – Replacement				19,560.73
Total Property			\$143,107.20	\$296,754.87
800 Other Objects				
810 Dues and Fees				1,380.42
Total Other Objects				\$1,380.42
Total 2800 Support Services – Central			\$151,057.20	\$2,080,266.91

General Fund (10)

2830 Staff Services

Elementary

Secondary

Federal

Total

200 Personnel Services – Employee Benefits

240 Tuition Reimbursement

41,001.00

Total Personnel Services – Employee Benefits

\$41,001.00

Total 2830 Staff Services

\$41,001.00

General Fund (10)

2834 Staff Development Services – Non-Instructional, Certified Staff Only

Elementary

Secondary

Federal

Total

200 Personnel Services – Employee Benefits

240 Tuition Reimbursement

29,176.00

Total Personnel Services – Employee Benefits

\$29,176.00

Total 2834 Staff Development Services – Non-Instructional, Certified Staff Only

\$29,176.00

General Fund (10)

	<u>Elementary</u>	<u>Secondary</u>	<u>Federal</u>	<u>Total</u>
2836 Staff Development Services – Non-Instructional, Non-Certified Staff Only				
200 Personnel Services – Employee Benefits				
240 Tuition Reimbursement				11,825.00
Total Personnel Services – Employee Benefits				\$11,825.00
Total 2836 Staff Development Services – Non-Instructional, Non-Certified Staff Only				\$11,825.00

General Fund (10)

2840 Data Processing Services

	<u>Elementary</u>	<u>Secondary</u>	<u>Federal</u>	<u>Total</u>
100 Personnel Services – Salaries				
100 Personnel Services – Salaries			7,950.00	808,851.03
Total Personnel Services – Salaries			\$7,950.00	\$808,851.03
200 Personnel Services – Employee Benefits				
210 Group Insurance – Contracted Provider				129,769.07
220 Social Security Contributions				60,455.78
230 PSERS Retirement Contributions				276,782.02
260 Workers' Compensation				4,262.28
270 Group Insurance – Self-Insurance				25,993.11
292 Health Savings Accounts				26,659.02
Total Personnel Services – Employee Benefits				\$523,921.28
300 Purchased Professional and Technical Services				
330 Other Professional Services				66,107.75
340 Technical Services				201,199.14
Total Purchased Professional and Technical Services				\$267,306.89
400 Purchased Property Services				
430 Repairs and Maintenance Services				42,861.76
Total Purchased Property Services				\$42,861.76
500 Other Purchased Services				
580 Travel				1,983.38
Total Other Purchased Services				\$1,983.38
600 Supplies				
610 General Supplies				17,752.10
630 Food				193.57
640 Books and Periodicals				75.36
650 Supplies & Fees – Technology Related				78,185.25
Total Supplies				\$96,206.28
700 Property				
752 Capital Equipment – Original and Additional				471.02
756 Capitalized Technology Equipment – Original			143,107.20	276,723.12
766 Capitalized Technology Equipment – Replacement				19,560.73
Total Property			\$143,107.20	\$296,754.87
800 Other Objects				
810 Dues and Fees				1,380.42
Total Other Objects				\$1,380.42
Total 2840 Data Processing Services			\$151,057.20	\$2,039,265.91

General Fund (10)

2900 Other Support Services

Elementary

Secondary

Federal

Total

500 Other Purchased Services

595 IU Payments By Withholding

81,575.67

Total Other Purchased Services

\$81,575.67

Total 2900 Other Support Services

\$81,575.67

General Fund (10)

2910 Support Services Not Listed Elsewhere In the 2000 Series

Elementary

Secondary

Federal

Total

500 Other Purchased Services

595 IU Payments By Withholding

81,575.67

Total Other Purchased Services

\$81,575.67

Total 2910 Support Services Not Listed Elsewhere In the 2000 Series

\$81,575.67

General Fund (10)

3000 Operation of Non-Instructional Services	<u>Total</u>
100 <u>Personnel Services – Salaries</u>	
100 Personnel Services – Salaries	815,601.99
Total Personnel Services – Salaries	\$815,601.99
200 <u>Personnel Services – Employee Benefits</u>	
210 Group Insurance – Contracted Provider	23,851.27
220 Social Security Contributions	61,167.64
230 PSERS Retirement Contributions	258,687.37
260 Workers’ Compensation	6,008.60
270 Group Insurance – Self-Insurance	5,794.65
292 Health Savings Accounts	5,995.97
Total Personnel Services – Employee Benefits	\$361,505.50
300 <u>Purchased Professional and Technical Services</u>	
330 Other Professional Services	22,198.50
390 Other Purchased Professional and Technical Services	52,059.76
Total Purchased Professional and Technical Services	\$74,258.26
400 <u>Purchased Property Services</u>	
430 Repairs and Maintenance Services	23,889.53
Total Purchased Property Services	\$23,889.53
500 <u>Other Purchased Services</u>	
580 Travel	18,903.90
Total Other Purchased Services	\$18,903.90
600 <u>Supplies</u>	
610 General Supplies	152,908.75
Total Supplies	\$152,908.75
700 <u>Property</u>	
752 Capital Equipment – Original and Additional	1,625.24
Total Property	\$1,625.24
800 <u>Other Objects</u>	
810 Dues and Fees	73,029.16
Total Other Objects	\$73,029.16
Total 3000 Operation of Non-Instructional Services	\$1,521,722.33

General Fund (10)

3200 Student Activities

	<u>Elementary</u>	<u>Secondary</u>	<u>Federal</u>	<u>Total</u>
100 Personnel Services – Salaries				
100 Personnel Services – Salaries			14,800.00	815,601.99
Total Personnel Services – Salaries			\$14,800.00	\$815,601.99
200 Personnel Services – Employee Benefits				
210 Group Insurance – Contracted Provider				23,851.27
220 Social Security Contributions				61,167.64
230 PSERS Retirement Contributions				258,687.37
260 Workers' Compensation				6,008.60
270 Group Insurance – Self-Insurance				5,794.65
292 Health Savings Accounts				5,995.97
Total Personnel Services – Employee Benefits				\$361,505.50
300 Purchased Professional and Technical Services				
330 Other Professional Services				22,198.50
390 Other Purchased Professional and Technical Services				52,059.76
Total Purchased Professional and Technical Services				\$74,258.26
400 Purchased Property Services				
430 Repairs and Maintenance Services				23,889.53
Total Purchased Property Services				\$23,889.53
500 Other Purchased Services				
580 Travel				18,903.90
Total Other Purchased Services				\$18,903.90
600 Supplies				
610 General Supplies				152,908.75
Total Supplies				\$152,908.75
700 Property				
752 Capital Equipment – Original and Additional				1,625.24
Total Property				\$1,625.24
800 Other Objects				
810 Dues and Fees				73,029.16
Total Other Objects				\$73,029.16
Total 3200 Student Activities			\$14,800.00	\$1,521,722.33

General Fund (10)

5000 Other Expenditures and Financing Uses

Total

800 Other Objects

830 Interest 3,281,682.11

Total Other Objects \$3,281,682.11

900 Other Uses of Funds

910 Redemption of Principal 4,726,574.89

932 Capital Reserve Fund Transfers Applicable To Fund 32 914,092.00

933 Athletic Fund Transfers 25,000.00

939 Other Fund Transfers 281,389.00

Total Other Uses of Funds \$5,947,055.89

Total 5000 Other Expenditures and Financing Uses \$9,228,738.00

General Fund (10)

	<u>Elementary</u>	<u>Secondary</u>	<u>Federal</u>	<u>Total</u>
5100 Debt Service / Other Expenditures and Financing Uses				
800 Other Objects				
830 Interest				3,281,682.11
Total Other Objects				\$3,281,682.11
900 Other Uses of Funds				
910 Redemption of Principal				4,726,574.89
Total Other Uses of Funds				\$4,726,574.89
Total 5100 Debt Service / Other Expenditures and Financing Uses				\$8,008,257.00

General Fund (10)

	<u>Elementary</u>	<u>Secondary</u>	<u>Federal</u>	<u>Total</u>
5110 Debt Service				
800 Other Objects				
830 Interest				3,279,977.11
Total Other Objects				\$3,279,977.11
900 Other Uses of Funds				
910 Redemption of Principal				4,445,388.89
Total Other Uses of Funds				\$4,445,388.89
Total 5110 Debt Service				\$7,725,366.00

General Fund (10)

	<u>Elementary</u>	<u>Secondary</u>	<u>Federal</u>	<u>Total</u>
5140 Leases				
800 <u>Other Objects</u>				
830 Interest				1,705.00
Total Other Objects				\$1,705.00
900 <u>Other Uses of Funds</u>				
910 Redemption of Principal				281,186.00
Total Other Uses of Funds				\$281,186.00
Total 5140 Leases				\$282,891.00

General Fund (10)

5200 Interfund Transfers – Out

Elementary

Secondary

Federal

Total

900 Other Uses of Funds

932 Capital Reserve Fund Transfers Applicable To Fund 32

914,092.00

933 Athletic Fund Transfers

25,000.00

939 Other Fund Transfers

281,389.00

Total Other Uses of Funds

\$1,220,481.00

Total 5200 Interfund Transfers – Out

\$1,220,481.00

LEA : 125237603 Radnor Township SD

Printed 2/10/2023 9:25:46 AM

General Fund (10)

	<u>Elementary</u>	<u>Secondary</u>	<u>Federal</u>	<u>Total</u>
5220 Special Revenue Fund Transfers				
900 Other Uses of Funds				
933 Athletic Fund Transfers				25,000.00
Total Other Uses of Funds				\$25,000.00
Total 5220 Special Revenue Fund Transfers				\$25,000.00

LEA : 125237603 Radnor Township SD

Printed 2/10/2023 9:25:46 AM

General Fund (10)

5230 Capital Projects Fund Transfers

Elementary

Secondary

Federal

Total

900 Other Uses of Funds

932 Capital Reserve Fund Transfers Applicable To Fund 32

914,092.00

Total Other Uses of Funds

\$914,092.00

Total 5230 Capital Projects Fund Transfers

\$914,092.00

General Fund (10)

5240 Debt Service Fund Transfers

Elementary

Secondary

Federal

Total

900 Other Uses of Funds

939 Other Fund Transfers

281,389.00

Total Other Uses of Funds

\$281,389.00

Total 5240 Debt Service Fund Transfers

\$281,389.00

Athletic / School-Sponsored Extra Curricular Activities Fund (29)

3000 Operation of Non-Instructional Services

Total

300 Purchased Professional and Technical Services

330 Other Professional Services

39,900.00

Total Purchased Professional and Technical Services

\$39,900.00

Total 3000 Operation of Non-Instructional Services

\$39,900.00

Athletic / School-Sponsored Extra Curricular Activities Fund (29)

3200 Student Activities

Elementary

Secondary

Federal

Total

300 Purchased Professional and Technical Services

330 Other Professional Services

39,900.00

Total Purchased Professional and Technical Services

\$39,900.00

Total 3200 Student Activities

\$39,900.00

Capital Reserve Fund - § 1431 (32)

2000 Support Services

Total

400 Purchased Property Services

430 Repairs and Maintenance Services

82,482.17

Total Purchased Property Services

\$82,482.17

700 Property

762 Capitalized Equipment - Replacement

205,146.48

Total Property

\$205,146.48

Total 2000 Support Services

\$287,628.65

Capital Reserve Fund - § 1431 (32)

2600 Operation and Maintenance of Plant Services

Elementary

Secondary

Federal

Total

400 Purchased Property Services

430 Repairs and Maintenance Services

82,482.17

Total Purchased Property Services

\$82,482.17

700 Property

762 Capitalized Equipment - Replacement

82,071.48

Total Property

\$82,071.48

Total 2600 Operation and Maintenance of Plant Services

\$164,553.65

Capital Reserve Fund - § 1431 (32)

2610 Supervision of Operation and Maintenance of Plant Services

Elementary

Secondary

Federal

Total

400 Purchased Property Services

430 Repairs and Maintenance Services

82,482.17

Total Purchased Property Services

\$82,482.17

700 Property

762 Capitalized Equipment - Replacement

82,071.48

Total Property

\$82,071.48

Total 2610 Supervision of Operation and Maintenance of Plant Services

\$164,553.65

LEA : 125237603 Radnor Township SD

Printed 2/10/2023 9:25:36 AM

Capital Reserve Fund - § 1431 (32)

2619 Supervision of Operation and Maintenance of Plant Services – All Other Supervision

Elementary

Secondary

Federal

Total

400 Purchased Property Services

430 Repairs and Maintenance Services

82,482.17

Total Purchased Property Services

\$82,482.17

700 Property

762 Capitalized Equipment - Replacement

82,071.48

Total Property

\$82,071.48

Total 2619 Supervision of Operation and Maintenance of Plant Services – All Other Supervision

\$164,553.65

LEA : 125237603 Radnor Township SD

Printed 2/10/2023 9:25:36 AM

Capital Reserve Fund - § 1431 (32)

2700 Student Transportation Services

Elementary

Secondary

Federal

Total

700 Property

762 Capitalized Equipment - Replacement

123,075.00

Total Property

\$123,075.00

Total 2700 Student Transportation Services

\$123,075.00

LEA : 125237603 Radnor Township SD

Printed 2/10/2023 9:25:36 AM

Capital Reserve Fund - § 1431 (32)

2710 Supervision of Student Transportation Services

Elementary

Secondary

Federal

Total

700 Property

762 Capitalized Equipment - Replacement

123,075.00

Total Property

\$123,075.00

Total 2710 Supervision of Student Transportation Services

\$123,075.00

LEA : 125237603 Radnor Township SD

Printed 2/10/2023 9:25:36 AM

Capital Reserve Fund - § 1431 (32)

2719 Supervision of Student Transportation Services – All Other Supervision

Elementary

Secondary

Federal

Total

700 Property

762 Capitalized Equipment - Replacement

123,075.00

Total Property

\$123,075.00

Total 2719 Supervision of Student Transportation Services – All Other Supervision

\$123,075.00

LEA : 125237603 Radnor Township SD

Printed 2/10/2023 9:25:42 AM

Capital Reserve Fund - § 1431 (32)

4000 Facilities Acquisition, Construction and Improvement Services

Total

300 Purchased Professional and Technical Services

330 Other Professional Services 48,350.00

Total Purchased Professional and Technical Services \$48,350.00

400 Purchased Property Services

430 Repairs and Maintenance Services 112,776.55

Total Purchased Property Services \$112,776.55

700 Property

762 Capitalized Equipment - Replacement 7,350.00

Total Property \$7,350.00

Total 4000 Facilities Acquisition, Construction and Improvement Services \$168,476.55

LEA : 125237603 Radnor Township SD

Printed 2/10/2023 9:25:42 AM

Capital Reserve Fund - § 1431 (32)

4600 Existing Building Improvement Services

Elementary

Secondary

Federal

Total

300 Purchased Professional and Technical Services

330 Other Professional Services

48,350.00

Total Purchased Professional and Technical Services

\$48,350.00

400 Purchased Property Services

430 Repairs and Maintenance Services

112,776.55

Total Purchased Property Services

\$112,776.55

700 Property

762 Capitalized Equipment - Replacement

7,350.00

Total Property

\$7,350.00

Total 4600 Existing Building Improvement Services

\$168,476.55

Other Capital Projects Fund (39)

4000 Facilities Acquisition, Construction and Improvement Services

Total

300 Purchased Professional and Technical Services

330 Other Professional Services	332,964.80
340 Technical Services	298,354.08
390 Other Purchased Professional and Technical Services	16,838,561.01

Total Purchased Professional and Technical Services	\$17,469,879.89
--	------------------------

Total 4000 Facilities Acquisition, Construction and Improvement Services	\$17,469,879.89
---	------------------------

Other Capital Projects Fund (39)

4300 Architecture and Engineering Services / Educational Specifications Development – Original and Additional

300 Purchased Professional and Technical Services

	<u>Elementary</u>	<u>Secondary</u>	<u>Federal</u>	<u>Total</u>
330 Other Professional Services				332,964.80
340 Technical Services				298,354.08
390 Other Purchased Professional and Technical Services				16,838,561.01

Total Purchased Professional and Technical Services				\$17,469,879.89
--	--	--	--	------------------------

Total 4300 Architecture and Engineering Services / Educational Specifications Development – Original and Additional				\$17,469,879.89
--	--	--	--	------------------------

	<u>General Fund(10)</u>	<u>Student Sponsored Activity Fund(21)</u>	<u>Public Purpose Trust(27)</u>	<u>Other Compt Approved (28)</u>	<u>Athletic / Activity(29)</u>
1000 Instruction					
1100 Regular Programs - Elementary / Secondary	43,654,090.07				
1200 Special Programs - Elementary / Secondary	14,275,753.17				
1300 Vocational Education	375,220.08				
1400 Other Instructional Programs - Elementary / Secondary	366,406.61				
1500 Nonpublic School Programs	40,912.66				
1600 Adult Education Programs	1,194,382.00				
Total Instruction	\$59,906,764.59				
2000 Support Services					
2100 Support Services - Students	5,050,567.23				
2200 Support Services - Instructional Staff	4,390,747.22				
2300 Support Services - Administration	6,305,698.55				
2400 Support Services - Pupil Health	1,436,689.50				
2500 Support Services - Business	1,149,485.47				
2600 Operation and Maintenance of Plant Services	9,337,920.69				
2700 Student Transportation Services	5,238,604.76				
2800 Support Services - Central	2,080,266.91				
2900 Other Support Services	81,575.67				
Total Support Services	\$35,071,556.00				
3000 Operation of Non-Instructional Services					
3200 Student Activities	1,521,722.33				39,900.00
Total Operation of Non-Instructional Services	\$1,521,722.33				\$39,900.00
4000 Facilities Acquisition, Construction and Improvement Services					
4300 Architecture and Engineering Services / Educational Specifications Development - Original and Additional					
4600 Existing Building Improvement Services					
Total Facilities Acquisition, Construction and Improvement Services					
5000 Other Expenditures and Financing Uses					
5100 Debt Service / Other Expenditures and Financing Uses	8,008,257.00				
5200 Interfund Transfers - Out	1,220,481.00				
Total Other Expenditures and Financing Uses	\$9,228,738.00				
TOTAL ACTUAL EXPENDITURES & OTHER FINANCING USES	\$105,728,780.92				\$39,900.00

	<u>Capital Reserve (690.1850)(31)</u>	<u>Capital Reserve (1431)(32)</u>	<u>Other Capital Projects Fund(39)</u>	<u>Debt Service(40)</u>	<u>Permanent(90)</u>
1000 Instruction					
1100 Regular Programs - Elementary / Secondary					
1200 Special Programs - Elementary / Secondary					
1300 Vocational Education					
1400 Other Instructional Programs - Elementary / Secondary					
1500 Nonpublic School Programs					
1600 Adult Education Programs					
Total Instruction					
2000 Support Services					
2100 Support Services - Students					
2200 Support Services - Instructional Staff					
2300 Support Services - Administration					
2400 Support Services - Pupil Health					
2500 Support Services - Business					
2600 Operation and Maintenance of Plant Services				164,553.65	
2700 Student Transportation Services				123,075.00	
2800 Support Services - Central					
2900 Other Support Services					
Total Support Services				\$287,628.65	
3000 Operation of Non-Instructional Services					
3200 Student Activities					
Total Operation of Non-Instructional Services					
4000 Facilities Acquisition, Construction and Improvement Services					
4300 Architecture and Engineering Services / Educational Specifications Development - Original and Additional				17,469,879.89	
4600 Existing Building Improvement Services				168,476.55	
Total Facilities Acquisition, Construction and Improvement Services				\$168,476.55	\$17,469,879.89
5000 Other Expenditures and Financing Uses					
5100 Debt Service / Other Expenditures and Financing Uses					
5200 Interfund Transfers - Out					
Total Other Expenditures and Financing Uses					
TOTAL ACTUAL EXPENDITURES & OTHER FINANCING USES				\$456,105.20	\$17,469,879.89

Total

1000 <u>Instruction</u>	
1100 Regular Programs - Elementary / Secondary	43,654,090.07
1200 Special Programs - Elementary / Secondary	14,275,753.17
1300 Vocational Education	375,220.08
1400 Other Instructional Programs - Elementary / Secondary	366,406.61
1500 Nonpublic School Programs	40,912.66
1600 Adult Education Programs	1,194,382.00
Total Instruction	\$59,906,764.59
2000 <u>Support Services</u>	
2100 Support Services - Students	5,050,567.23
2200 Support Services - Instructional Staff	4,390,747.22
2300 Support Services - Administration	6,305,698.55
2400 Support Services - Pupil Health	1,436,689.50
2500 Support Services - Business	1,149,485.47
2600 Operation and Maintenance of Plant Services	9,502,474.34
2700 Student Transportation Services	5,361,679.76
2800 Support Services - Central	2,080,266.91
2900 Other Support Services	81,575.67
Total Support Services	\$35,359,184.65
3000 <u>Operation of Non-Instructional Services</u>	
3200 Student Activities	1,561,622.33
Total Operation of Non-Instructional Services	\$1,561,622.33
4000 <u>Facilities Acquisition, Construction and Improvement Services</u>	
4300 Architecture and Engineering Services / Educational Specifications Development - Original and Additional	17,469,879.89
4600 Existing Building Improvement Services	168,476.55
Total Facilities Acquisition, Construction and Improvement Services	\$17,638,356.44
5000 <u>Other Expenditures and Financing Uses</u>	
5100 Debt Service / Other Expenditures and Financing Uses	8,008,257.00
5200 Interfund Transfers - Out	1,220,481.00
Total Other Expenditures and Financing Uses	\$9,228,738.00
TOTAL ACTUAL EXPENDITURES & OTHER FINANCING USES	\$123,694,666.01

PSERS Salary Data (Salary Data should relate to the General Fund only)

Amount Description	Amount
Total Salary Base for salaries subject to PSERS withholding	46,623,095.00
Total Federally Funded salaries subject to PSERS withholding	301,856.00
	<hr/>

Title I Expenditure Data

Amount Description	Amount
Expenditures Funded with Current Title I Funds	222,224.00
Expenditures Funded with Carry over Title I Funds	303,573.00
Total Title I Expenditure Data	<hr/> \$525,797.00 <hr/>

Title IV Revenue Data

Amount Description	Amount
Revenue from Title IV-A-1: Student Support and Academic Enrichment Grants	54,225.00
Revenue from Title IV-B: 21st Century Community Learning Centers	<hr/>

Title V Revenue Data

Amount Description	Amount
Revenue from Title V-B-2: Rural and Low-Income School Programs	<hr/>
Revenue from Title V-B-1: Small Rural School Achievement (Directly from the Federal Govt)	<hr/>

1. <u>Current Special Education Expenditures within Function 1000.\r\nSee list of exclusions in the note below.</u>	15,366,006.22
2. <u>Current Special Education Expenditures within Function 2000.\r\nSee list of exclusions in the note below.</u>	7,553,871.64
3. <u>Current Special Education Expenditures within Sub-Function 2100.\r\nThis data should also be included in line 2 above.\r\nSee list of exclusions in the note below.</u>	3,065,392.65
4. <u>Current Special Education Expenditures within Sub-Function 2200.\r\nThis data should also be included in line 2 above.\r\nSee list of exclusions in the note below.</u>	628,797.34
5. <u>Current Special Education Expenditures within Sub-Function 2700.\r\nThis data should also be included in line 2 above.\r\nSee list of exclusions in the note below.</u>	782,648.06
6. <u>Current Special Education Expenditures within Sub-Function 3100.\r\nSee list of exclusions in the note below.</u>	
7. <u>Current Special Education Expenditures within Sub-Function 3200.\r\nSee list of exclusions in the note below.</u>	

Note: The Current Special Education Expenditure amounts for each line should be calculated as follows:

- * Include the total expenditures for special education costs from all funds for the function/sub-function requested
- * Exclude data from sub-functions: 1243,1450,1500,1600,1807,2280,2450,2750,2990
- * Exclude data from objects: 322,511,512,516,561,562,564,566,592,593,594,595,596,597,700,830,899

Benefits for Staff Relative to Collective Bargaining Agreements

	OBJECT	COVERED	NOT COVERED	TOTAL
10 General Fund				
	211 Medical Insurance	7,654,086.52		7,654,086.52
	212 Dental Insurance	341,351.68		341,351.68
	215 Eye Care Insurance			
	216 Prescription Insurance			
	271 Self-Insurance Medical Benefits			
	272 Self-Insurance Dental Benefits			
	275 Self-Insurance Eye Care Benefits	19,115.68		19,115.68
	276 Self-Insurance Prescription Benefits	1,584,859.95		1,584,859.95
	FUND TOTAL	\$9,599,413.83		\$9,599,413.83
50 Enterprise Fund				
	211 Medical Insurance	104,899.20		104,899.20
	212 Dental Insurance	3,443.58		3,443.58
	215 Eye Care Insurance			
	216 Prescription Insurance			
	271 Self-Insurance Medical Benefits			
	272 Self-Insurance Dental Benefits			
	275 Self-Insurance Eye Care Benefits	1,255.26		1,255.26
	276 Self-Insurance Prescription Benefits	22,029.54		22,029.54
	FUND TOTAL	\$131,627.58		\$131,627.58
60 Internal Service Fund	No Self Insurance data to report			
	211 Medical Insurance			
	212 Dental Insurance			
	215 Eye Care Insurance			
	216 Prescription Insurance			
	271 Self-Insurance Medical Benefits			
	272 Self-Insurance Dental Benefits			
	275 Self-Insurance Eye Care Benefits			
	276 Self-Insurance Prescription Benefits			
	FUND TOTAL			
Total of All Funds		\$9,731,041.41		\$9,731,041.41

LEA : 125237603 Radnor Township SD

Printed 2/10/2023 9:26:08 AM

Function	Special Education (Prior Year)	Nonspecial Education (Prior Year)	Total (Prior Year)	Special Education (Current Year)	Nonspecial Education (Current Year)	Total (Current Year)
2120 Guidance Services	338,922.56	1,652,983.95	1,991,906.51	285,256.65	1,701,776.74	1,987,033.39
2140 Psychological Services	136,628.21	890,651.58	1,027,279.79	158,108.03	947,420.13	1,105,528.16
2150 Speech Pathology and Audiology Services						
2160 Social Work Services	37,946.56	247,365.95	285,312.51	49,099.77	294,217.23	343,317.00
2260 Instruction and Curriculum Development Services	150,502.53	826,726.36	977,228.89	137,293.62	822,695.38	959,989.00
2350 Legal and Accounting Services	108,504.33	374,571.28	483,075.61	203,078.00	83,765.00	286,843.00
2420 Medical Services	840.00	5,160.00	6,000.00	858.09	5,141.91	6,000.00
2440 Nursing Services	382,984.55	887,774.00	1,270,758.55	368,569.95	1,062,119.55	1,430,689.50
2700 Student Transportation Services	711,077.60	4,541,151.27	5,252,228.87	852,186.45	4,386,417.91	5,238,604.36
Total	\$1,867,406.34	\$9,426,384.39	\$11,293,790.73	\$2,054,450.56	\$9,303,553.85	\$11,358,004.41

(PRINCIPAL AMOUNTS ONLY)

GOVERNMENTAL FUNDS/ ACTIVITIES

	Short-Term Borrowing	General Obligation Bonds/Notes	Authority Building Obligations	OLTD, Ext Term Fin, Leases	Other Post-Employment Benefits (OPEB)	Compensated Absences	Net Pension Liability	Total
1. Debt at Beginning of Fiscal Year		97,441,000.00	5,065,000.00	3,579,094.29	3,488,079.00	782,527.27	158,460,540.00	268,816,240.56
2. Additional Debt Incurred During Year				590,872.71	396,548.00		705,710.00	1,693,130.71
3. Retirements and Repayments		4,164,000.00		559,114.00	209,309.00	86,557.00	23,814,751.00	28,833,731.00
4. Debt at End of Fiscal Year		93,277,000.00	5,065,000.00	3,610,853.00	3,675,318.00	695,970.27	135,351,499.00	241,675,640.27
5. Accreted Interest at End Of Fiscal Year								
6. Total Debt and Accreted Interest		93,277,000.00	5,065,000.00	3,610,853.00	3,675,318.00	695,970.27	135,351,499.00	241,675,640.27
7. Current Portion P&I - Due within 1 year		7,190,653.41	278,812.20	559,114.00		36,470.00		8,065,049.61
8. Interest Paid during current fiscal year		3,024,403.41	278,812.20	1,705.00				3,304,920.61

(PRINCIPAL AMOUNTS ONLY)

PROPRIETARY FUNDS

	Short-Term Borrowing	General Obligation Bonds/Notes	Authority Building Obligations	OLTD, Ext Term Fin, Leases	Other Post-Employment Benefits (OPEB)	Compensated Absences	Net Pension Liability	Total
1. Debt at Beginning of Fiscal Year					48,007.00		1,597,238.00	1,645,245.00
2. Additional Debt Incurred During Year					31,431.00			31,431.00
3. Retirements and Repayments							195,028.00	195,028.00
4. Debt at End of Fiscal Year					79,438.00		1,402,210.00	1,481,648.00
5. Accreted Interest at End Of Fiscal Year								
6. Total Debt and Accreted Interest					79,438.00		1,402,210.00	1,481,648.00
7. Current Portion P&I - Due within 1 year								
8. Interest Paid during current fiscal year								

Total Principal and Interest Payments Made by Your School - All Funds

Function	Fund		Principal (910)	Principal (920)	Interest (830)	Total (Principal +Interest)	Misc Other Uses (990)
5110	10	General Fund	4,445,388.89		3,279,977.11	7,725,366.00	
5110	20	Special Revenue Funds					
5110	30	Capital Projects Funds					
5110	40	Debt Service Fund					
5110	90	Permanent Fund					
5120	10	General Fund					
5120	20	Special Revenue Funds					
5120	30	Capital Projects Funds					
5120	40	Debt Service Fund					
5140	10	General Fund	281,186.00		1,705.00	282,891.00	
5140	20	Special Revenue Funds					
5140	30	Capital Projects Funds					
5140	40	Debt Service Fund					
5140	90	Permanent Fund					
Total Debt Payments - Governmental Funds			\$4,726,574.89		\$3,281,682.11	\$8,008,257.00	

Function	Fund		Principal (910)	Principal (920)	Interest (830)	Total (Principal +Interest)
5110	50	Enterprise Fund				
5110	60	Internal Service Fund				
5120	50	Enterprise Fund				
5120	60	Internal Service Fund				
5140	50	Enterprise Fund				
5140	60	Internal Service Fund				
Total Debt Payments - Proprietary Funds						

Debt Details
Governmental Funds/ Activities

Debt Category	Debt Issue Date (MM/YYYY)	Principal Amounts Only			Debt at End of Fiscal Year	Current Portion Due Within One Year (Principal and Interest)	Interest Paid During Fiscal Year
		Debt at Beginning of Fiscal Year	Additions	Reductions / Repayments			
General Obligation Bonds/Notes – CIB	04/2021	25,530,000.00		5,000.00	25,525,000.00	820,256.25	815,256.25
General Obligation Bonds/Notes – CIB	11/2019	17,100,000.00		225,000.00	16,875,000.00	757,600.00	530,350.00
General Obligation Bonds/Notes – CIB	05/2019	9,110,000.00		90,000.00	9,020,000.00	340,025.00	250,025.00
General Obligation Bonds/Notes – CIB	05/2019	9,940,000.00		5,000.00	9,935,000.00	282,058.00	277,058.00
General Obligation Bonds/Notes – CIB	11/2017	9,746,000.00		44,000.00	9,702,000.00	237,945.40	193,945.40
General Obligation Bonds/Notes – CIB	11/2017	1,905,000.00		1,165,000.00	740,000.00	1,198,337.50	33,337.50
General Obligation Bonds/Notes – CIB	01/2016	2,015,000.00		410,000.00	1,605,000.00	458,462.50	48,462.50
General Obligation Bonds/Notes – CIB	02/2015	8,960,000.00		780,000.00	8,180,000.00	1,154,400.00	374,400.00
General Obligation Bonds/Notes – CIB	11/2014	5,400,000.00		85,000.00	5,315,000.00	245,227.50	160,227.50
General Obligation Bonds/Notes – CIB	07/2014	7,735,000.00		1,355,000.00	6,380,000.00	1,696,341.26	341,341.26
Authority Building Obligations – CIB	11/2011	3,565,000.00			3,565,000.00	181,387.20	181,387.20
Authority Building Obligations – CIB	11/2010	1,500,000.00			1,500,000.00	97,425.00	97,425.00
Other Long Term Debt/Liabilities		2,662,728.29	590,872.71	277,928.00	2,975,673.00	277,928.00	
Compensated Absences		782,527.27		86,557.00	695,970.27	36,470.00	
Other Post-Employment Benefits (OPEB)		3,488,079.00	396,548.00	209,309.00	3,675,318.00		
Net Pension Liability		158,460,540.00	705,710.00	23,814,751.00	135,351,499.00		
Leases		916,366.00		281,186.00	635,180.00	281,186.00	1,705.00
Totals for Debt Entered:		\$268,816,240.56	\$1,693,130.71	\$28,833,731.00	\$241,675,640.27	\$8,065,049.61	\$3,304,920.61

Bond Details
Proprietary Funds

Debt Category	Debt Issue Date (MM/YYYY)	Principal Amounts Only			Debt at End of Fiscal Year	Current Portion Due Within One Year (Principal and Interest)	Interest Paid During Fiscal Year
		Debt at Beginning of Fiscal Year	Additions	Reductions / Repayments			
Other Post-Employment Benefits (OPEB)		48,007.00	31,431.00		79,438.00		
Net Pension Liability		1,597,238.00		195,028.00	1,402,210.00		
Totals for Debt Entered:		\$1,645,245.00	\$31,431.00	\$195,028.00	\$1,481,648.00		

General Fund (10)

Section 1: Tuition/Purchased Services as Reported within Expenditure Detail

	Amount
Tuition Reported in General Fund Expenditures 1000-560	5,019,369.26
Purchased Services in General Fund Expenditures 1000-594 and 1000-597	1,908.33
Section 1 Total	\$5,021,277.59

Section 2: Tuition Paid to Institution Types During Fiscal Year

	Tuition Paid For Nonspecial Education	Tuition Paid For Special Education	Total
1 1306 Institutions			
2 Institutionalized Children's Programs		1,908.33	1,908.33
3 Juveniles Incarcerated in Adult Facilities			
4 Residential Treatment Facilities			
5 Other Local Education Agencies		2,726,725.14	2,726,725.14
6 Brick and Mortar Charter Schools	37,982.00		37,982.00
7 Cyber Charter Schools	187,389.58	131,552.06	318,941.64
8 Career and Technology Centers	375,220.08		375,220.08
9 Approved Private Schools	273,032.10	93,087.00	366,119.10
10 PA Chartered Schools for the Deaf and Blind			
11 Private Residential Rehabilitative Institutions			
12 Juvenile Detention Centers			
13 Special Program Jointures	1,194,381.30		1,194,381.30
14 Other Tuition Not Included Elsewhere In This Section			
Section 2 Total	\$2,068,005.06	\$2,953,272.53	\$5,021,277.59

Food Service / Cafeteria Operations Fund (51)

3000 Operation of Non-Instructional Services

	<u>Total</u>
100 Personnel Services – Salaries	
100 Personnel Services – Salaries	547,281.00
Total Personnel Services – Salaries	\$547,281.00
200 Personnel Services – Employee Benefits	
210 Group Insurance – Contracted Provider	108,662.00
220 Social Security Contributions	43,350.00
230 PSERS Retirement Contributions	149,991.00
260 Workers’ Compensation	5,061.00
270 Group Insurance – Self-Insurance	23,285.00
292 Health Savings Accounts	10,077.00
Total Personnel Services – Employee Benefits	\$340,426.00
300 Purchased Professional and Technical Services	
330 Other Professional Services	388.00
Total Purchased Professional and Technical Services	\$388.00
400 Purchased Property Services	
430 Repairs and Maintenance Services	40,565.00
Total Purchased Property Services	\$40,565.00
500 Other Purchased Services	
580 Travel	466.00
599 Other Miscellaneous Purchased Services	56,345.00
Total Other Purchased Services	\$56,811.00
600 Supplies	
610 General Supplies	97,976.00
630 Food	801,363.00
Total Supplies	\$899,339.00
700 Property	
740 Depreciation	26,069.00
Total Property	\$26,069.00
800 Other Objects	
810 Dues and Fees	3,415.00
Total Other Objects	\$3,415.00
Total 3000 Operation of Non-Instructional Services	\$1,914,294.00

Food Service / Cafeteria Operations Fund (51)

	<u>Elementary</u>	<u>Secondary</u>	<u>Federal</u>	<u>Total</u>
3100 Food Services				
100 Personnel Services – Salaries				
100 Personnel Services – Salaries				547,281.00
Total Personnel Services – Salaries				\$547,281.00
200 Personnel Services – Employee Benefits				
210 Group Insurance – Contracted Provider				108,662.00
220 Social Security Contributions				43,350.00
230 PSERS Retirement Contributions				149,991.00
260 Workers' Compensation				5,061.00
270 Group Insurance – Self-Insurance				23,285.00
292 Health Savings Accounts				10,077.00
Total Personnel Services – Employee Benefits				\$340,426.00
300 Purchased Professional and Technical Services				
330 Other Professional Services				388.00
Total Purchased Professional and Technical Services				\$388.00
400 Purchased Property Services				
430 Repairs and Maintenance Services				40,565.00
Total Purchased Property Services				\$40,565.00
500 Other Purchased Services				
580 Travel				466.00
599 Other Miscellaneous Purchased Services				56,345.00
Total Other Purchased Services				\$56,811.00
600 Supplies				
610 General Supplies				97,976.00
630 Food				801,363.00
Total Supplies				\$899,339.00
700 Property				
740 Depreciation				26,069.00
Total Property				\$26,069.00
800 Other Objects				
810 Dues and Fees				3,415.00
Total Other Objects				\$3,415.00
Total 3100 Food Services				\$1,914,294.00

Internal Service Fund (60)

2000 Support Services

Total

200 Personnel Services – Employee Benefits

210 Group Insurance – Contracted Provider

10,258,631.00

Total Personnel Services – Employee Benefits

\$10,258,631.00

300 Purchased Professional and Technical Services

330 Other Professional Services

868,088.00

Total Purchased Professional and Technical Services

\$868,088.00

Total 2000 Support Services

\$11,126,719.00

Internal Service Fund (60)

2300 Support Services – Administration

Elementary

Secondary

Federal

Total

200 Personnel Services – Employee Benefits

210 Group Insurance – Contracted Provider

10,258,631.00

Total Personnel Services – Employee Benefits

\$10,258,631.00

300 Purchased Professional and Technical Services

330 Other Professional Services

868,088.00

Total Purchased Professional and Technical Services

\$868,088.00

Total 2300 Support Services – Administration

\$11,126,719.00

Internal Service Fund (60)

2340 Staff Relations and Negotiations Services

Elementary

Secondary

Federal

Total

200 Personnel Services – Employee Benefits

210 Group Insurance – Contracted Provider

10,258,631.00

Total Personnel Services – Employee Benefits

\$10,258,631.00

300 Purchased Professional and Technical Services

330 Other Professional Services

868,088.00

Total Purchased Professional and Technical Services

\$868,088.00

Total 2340 Staff Relations and Negotiations Services

\$11,126,719.00

	<u>Food Service(51)</u>	<u>Child Care Operations(52)</u>	<u>Other Enterprise(58)</u>	<u>Internal Service(60)</u>	<u>Total</u>
2000 <u>Support Services</u>					
2300 Support Services - Administration				11,126,719.00	11,126,719.00
Total Support Services				\$11,126,719.00	\$11,126,719.00
3000 <u>Operation of Non-Instructional Services</u>					
3100 Food Services	1,914,294.00				1,914,294.00
Total Operation of Non-Instructional Services	\$1,914,294.00				\$1,914,294.00
TOTAL ACTUAL EXPENDITURES & OTHER FINANCING USES	\$1,914,294.00			\$11,126,719.00	\$13,041,013.00

LEA : 125237603 Radnor Township SD

Printed 2/10/2023 9:26:28 AM

Fund	School	School Number	Local Personnel	Local Nonpersonnel	State Personnel	State Nonpersonnel	Federal Personnel	Federal Nonpersonnel	Total	Explanation
10										
	Ithan El Sch	6510	9,340,298.00	1,293,626.00	225.00	27,591.00	192,473.00	59,033.00	10,913,246.00	
	Radnor El Sch	7697	11,303,342.00	1,553,390.87	285.00	34,935.60	281,466.59	79,234.00	13,252,654.06	
	Radnor MS	6511	18,193,776.00	2,247,110.00	397.00	63,625.00	335,805.00	93,715.00	20,934,428.00	
	Radnor SHS	1921	25,693,466.00	4,108,690.00	573.00	145,611.00	480,101.00	203,105.00	30,631,546.00	
	Wayne El Sch	6512	11,152,644.00	1,462,450.00	258.00	31,524.00	220,067.00	72,309.00	12,939,252.00	
Total			75,683,526.00	10,665,266.87	1,738.00	303,286.60	1,509,912.59	507,396.00	88,671,126.06	