

LEA Name : Radnor Township SD
Address : 135 S Wayne Ave
Wayne , PA 19087

County : Delaware
AUN Number : 125237603
LEA Type : SD

Annual Financial Report Accuracy Certification Statement

For Fiscal Year Ending
6/30/2023

Pennsylvania Department of Education
&
Office of Comptroller Operations

PDE-2056: Intermediate Unit
PDE-2057: School District, AVTS/CTC, Charter School,
and Special Program Jointure

CERTIFICATION: By signing this page I agree that the electronic data submitted is a complete and accurate statement of the financial operations and status of the local education agency for the fiscal year. It has been prepared in accordance with generally accepted accounting principles and established Commonwealth of PA reporting guidelines.



Chief School Administrator Signature

Date

1/04/24



Board Secretary Signature

Date

1/04/24

Brian Pawling

Contact Person

brian.pawling@rtsd.org

Contact Person E-mail Address

(610)687-8100

Ext :6134

Contact Person Telephone Number

Contact Person Fax Number

Audit Certification
Annual Financial Report:
For Fiscal Year Ending **6/30/2023**
(Pursuant to PA School Code Section 218(b))

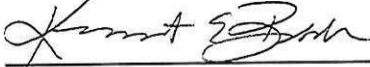
LEA Name : Radnor Township SD
AUN Number : 125237603
County : Delaware

Audit Certification Due: 12/31/2023

This certification is applicable to the Annual Financial Report data submitted through the Consolidated Financial Reporting System (CFRS).

CERTIFICATION: By signing this page I agree that the financial statements of the school have been properly audited as noted above pursuant to Article XXIV, and in the auditor's professional opinion, the Annual Financial Report (PDE-2057) submitted through CFRS is materially consistent with the audited financial statements.

Chief School Administrator



Signature

1/4/2024
Date

Board Secretary



Signature

1/4/2024
Date

Brian Pawling

Contact Person

brian.pawling@rtsd.org

Contact Person E-mail Address

(610)687-8100

Ext :6134

Contact Person Telephone Number

Contact Person Fax Number



No. 008-AR

RADNOR TOWNSHIP
SCHOOL DISTRICT

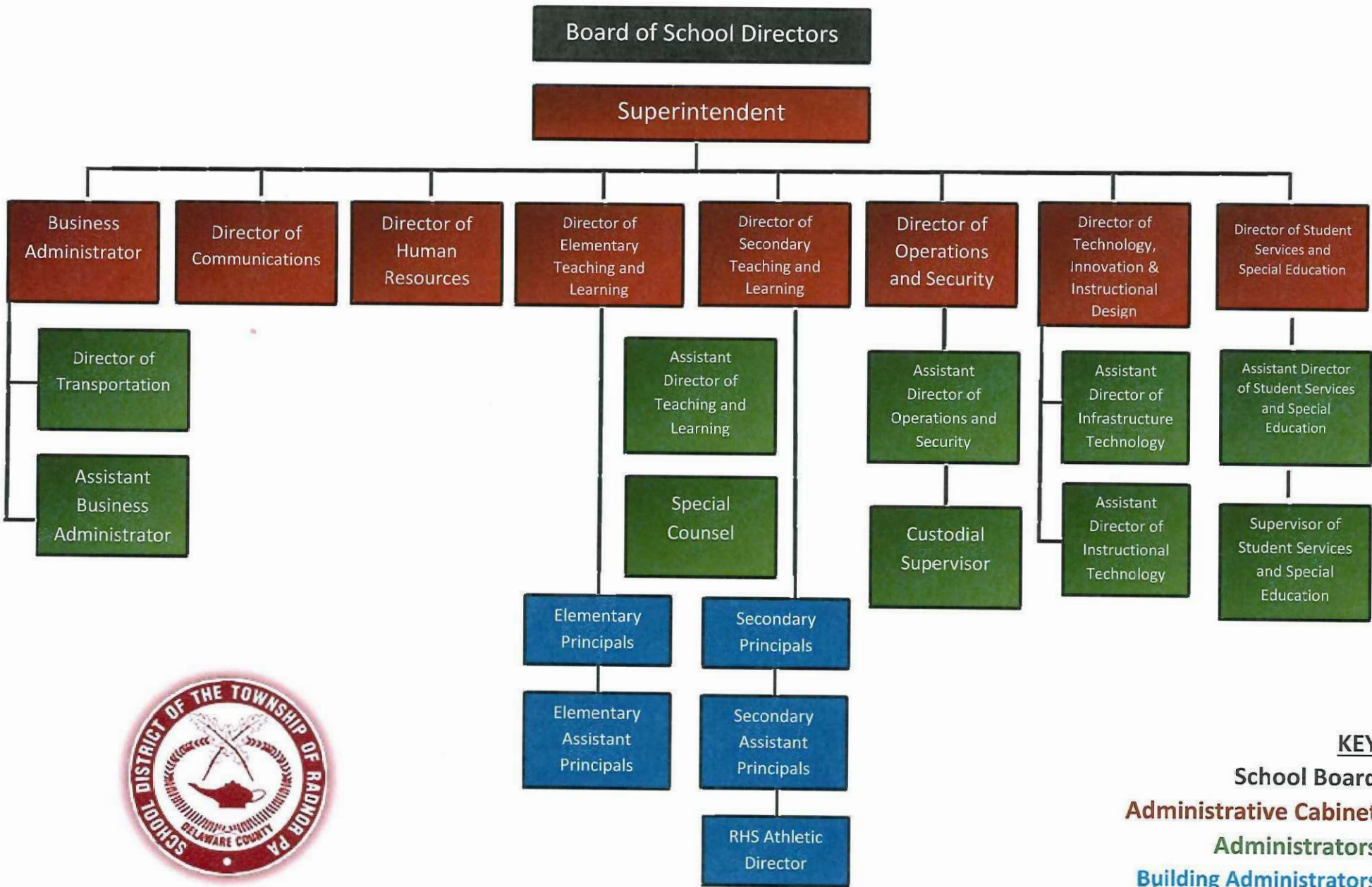
ADMINISTRATIVE
REGULATION

IMPLEMENTATION DATE:
September 24, 2019

008-AR. ADMINISTRATIVE ORGANIZATIONAL CHART

The following Administrative Organizational Chart has been approved by the Board for the purposes set forth in Policy 008. It may only be amended by formal action by the Board.

Radnor Township School District Administrative Organizational Chart 2021-2022



KEY
 School Board
 Administrative Cabinet
 Administrators
 Building Administrators



Book	Radnor Township School District Policy Manual
Section	600 Finances
Title	Capital Assets
Code	622
Status	Active
Adopted	August 26, 2008
Last Revised	March 28, 2023

Purpose

The Board recognizes the need to implement the required accounting and financial reporting standards stipulated by the Pennsylvania Department of Education.

The primary objectives of implementing the Governmental Accounting Standards Board (GASB) Statement 34 are to assure compliance with state requirements, and properly account for both the financial and economic resources of the District.

Authority

Participation of the District in any such activity shall be in accordance with Board policy.[\[1\]](#)[\[2\]](#)

Definition

Capital Assets include land, improvements to land, easements, buildings, building improvement, vehicles, machinery, equipment, works of art and historical treasures, and infrastructures. Capital assets are both tangible and intangible assets used in operations and have initial useful lives extending beyond a single reporting period. Equipment will not change its original shape, appearance or character with use and it can be expected to last more than one (1) year with reasonable care and maintenance.

Guidelines

Purchased Capital Assets

Purchased capital assets greater than \$5,000, or which have a useful life of greater than five (5) years, shall be tagged and recorded electronically at their historical/original cost within the District's Capital Asset Inventory System. The cost of capital assets shall include capitalized interest and ancillary charges necessary to place the asset into service. Ancillary charges include freight, site preparation and professional fees.

Capital assets shall be depreciated over their useful lives as determined for each asset class. Inexhaustible capital assets such as land and land improvements shall not be depreciated.

If determining historical costs is not practical due to inadequate records, reporting shall be based on estimates of original cost at the date of construction or purchase.

Capital asset records must include the acquisition date, cost, useful life, depreciation method and salvage value for capital asset classifications and groups.

Individual items less than \$5,000 but purchased in the aggregate and totaling \$10,000 or more, shall be capitalized and depreciated as a unit over the useful life for that asset class.

Due to ongoing changes in technology computer software is considered a supply and is expensed at the time of purchase.

Depreciation Expense

Depreciation expense should be reported in the statement of activities. Depreciation expense that can be specifically identified with a function should be included as a direct expense. Depreciations expense for shared facilities should be ratable included in direct expenses for each function.

Depreciation is allocated to expense in a systematic and rational manner. The straight-line method of depreciation will be used.

Depreciation may be calculated for a class of assets, a network of assets or individual assets.

Disposals and Donations

Records of all disposals and donations of District assets shall be maintained in accordance with applicable law or Board policy.

Sale of Capital Assets – When capital assets are sold, a calculation of gain or loss on disposal is required. The calculation is based upon the amount of proceeds received less the net book value (cost less accumulated depreciation taken on the asset.). All sales or donations of Capital Assets shall be approved by a majority vote of the Board of School Directors. [3]

Trade-ins - The value given for a trade-in is part of the cost of the newly acquired asset. The costs and accumulated depreciation of the trade-in asset must be removed from the books. Any gain or loss resulting from the disposition of the asset will be recognized as a gain or loss on disposal.

Electronic Equipment - records shall be maintained throughout the life of the asset and any disposal shall be reported to the Business Office.

Assets Purchased With Federal Funds - shall be maintained and disposed of in accordance with any guidelines issued by the Federal awarding agency.

Assets Acquired by Capital Lease

Assets acquired by capital lease shall be recorded at the net present value of the future minimum lease payments. A corresponding liability shall be established at this time. Assets acquired under the terms of capital leases shall be depreciated over the useful lives designated for the asset class.

Assets Acquired by Debt Proceeds

In order to associate debt with acquired assets and to avoid net asset deficits, any asset that has been acquired with debt proceeds shall be capitalized, regardless of the cost of the asset.

Delegation of Responsibility

The responsibility to coordinate the compilation and preparation of all information necessary to implement this policy is delegated to the Business Administrator or designee.

The Business Administrator or designee shall be responsible for implementing the necessary procedures to establish and maintain a capital asset inventory.

Legal

1. 24 P.S. 218
2. 24 P.S. 613

Governmental Accounting Standards Board, Statement No. 34

Pol. 706

Pol. 706.1

<u>Val Number</u>	<u>Description</u>	<u>Justification</u>
12045	REG - Athletic Fund 29: Local Revenue (6000) must exceed total of all other funding sources (7000, 8000, and 9000). Correct or enter a justification. REG 6000, Fund 29 : \$897.00 REG 7000, 8000, 9000 - Fund 29: \$45,000.00	Transfer from GF for pool proceeds. Pool was closed during renovations and not rented out.
30118	Revenue Detail - Fund 40: A negative amount has been reported in account 6500 Earnings on Investments. Please correct or enter an explanation. REV Detail 6500, Fund 40: \$-58,113.00	Due to the recognition of unrealized losses on the debt sinking funds held at Wells Fargo. The US Treasuries saw reductions in value due to changes in market rates during the year.
42420	Expenditure Detail: Total current year 2700-513 expenditure varies from prior year by 10%. Correct the data or enter a justification. 2700-513, AFR Exp Detail: \$34,920.67 2700-513, PY AFR Amount: \$15,540.58	We incurred additional contracted costs as more were required this year than last. We provide in-house transportation and only use outside carriers when necessary.
50077	SOIN: Expenditures have been reported in Functions 5110 or 5120, Object 920 representing Authority Building Obligation principal payments however, no reductions to ABO debt have been reported on the SOIN. Expenditure Detail, Function 5110 and 5120, Object 920: \$277,928.00 SOIN, Authority Building Obligation Reductions: \$0.00	Moved DCCC obligations from Auth Bldg Obl to OLTD on the SOIN per pde
50160	SOIN: All Governmental Fund General Obligation Bonds must include an amount for Interest Paid during Fiscal Year. Correct data or enter a justification.	New 2023 Bond issued 03/2023, this bond refinanced the 2015A bond, but no amount was due before June 2023
50470	SESS - 2440 Nursing Services: SESS Schedule amounts for Special Education vary from prior year by 40% or more. Correct the data or enter a justification. SESS Schedule 2440: \$202,398.33 Prior Year SESS Schedule 2440: \$368,569.95	We purchased additional nursing equipment/supplies last year.

Amounts Expressed in Whole Dollars

	<u>General Fund</u> <u>(10)</u>	<u>Student Sponsored</u> <u>Activity Fund</u> <u>(21)</u>	<u>Public Purpose Trust</u> <u>(27)</u>	<u>Other Compt Approved</u> <u>(28)</u>	<u>Athletic / Activity</u> <u>(29)</u>
Assets And Deferred Outflows Of Resources					
Assets					
0100 Cash and Cash Equivalents	36,637,502				25,129
0110 Investments	5,000,000				
0120 Taxes Receivable	1,216,736				
0130 Due From Other Funds	20,714				
0141 Due From Other Governments	5,175,991				
0142 State Revenue Receivable					
0143 Federal Revenue Receivable					
0145 Other Intergovernmental Revenue Receivable					
0146 Due from Primary Government					
0147 Due from Component Unit					
0150 Other Receivables	1,563,202				720
0170 Inventories					
0180 Prepaid Expenses (Expenditures)	9,961				
0190 Other Current Assets					
Total Assets	\$49,624,106				\$25,849
0910 Deferred Outflows of Resources					
Total Assets And Deferred Outflows Of Resources	\$49,624,106				\$25,849

Amounts Expressed in Whole Dollars

	<u>Capital Reserve (690.</u> <u>1850)</u> <u>(31)</u>	<u>Capital Reserve (1431)</u> <u>(32)</u>	<u>Other Capital Projects</u> <u>Fund</u> <u>(39)</u>	<u>Debt Service</u> <u>(40)</u>	<u>Permanent</u> <u>(90)</u>
Assets And Deferred Outflows Of Resources					
Assets					
0100 Cash and Cash Equivalents		7,161,972	22,638	1,891	
0110 Investments		1,277,637	13	2,941,375	
0120 Taxes Receivable					
0130 Due From Other Funds		3,000,000			
0141 Due From Other Governments					
0142 State Revenue Receivable					
0143 Federal Revenue Receivable					
0145 Other Intergovernmental Revenue Receivable					
0146 Due from Primary Government					
0147 Due from Component Unit					
0150 Other Receivables					
0170 Inventories					
0180 Prepaid Expenses (Expenditures)					
0190 Other Current Assets					
Total Assets		\$11,439,609	\$22,651	\$2,943,266	
0910 Deferred Outflows of Resources					
Total Assets And Deferred Outflows Of Resources		\$11,439,609	\$22,651	\$2,943,266	

Amounts Expressed in Whole Dollars

Total Governmental Funds

Assets And Deferred Outflows Of Resources

Assets	
0100 Cash and Cash Equivalents	43,849,132
0110 Investments	9,219,025
0120 Taxes Receivable	1,216,736
0130 Due From Other Funds	3,020,714
0141 Due From Other Governments	5,175,991
0142 State Revenue Receivable	
0143 Federal Revenue Receivable	
0145 Other Intergovernmental Revenue Receivable	
0146 Due from Primary Government	
0147 Due from Component Unit	
0150 Other Receivables	1,563,922
0170 Inventories	
0180 Prepaid Expenses (Expenditures)	9,961
0190 Other Current Assets	
Total Assets	\$64,055,481
0910 Deferred Outflows of Resources	
Total Assets And Deferred Outflows Of Resources	\$64,055,481

Amounts Expressed in Whole Dollars	<u>General Fund</u> <u>(10)</u>	<u>Student Sponsored</u> <u>Activity Fund</u> <u>(21)</u>	<u>Public Purpose Trust</u> <u>(27)</u>	<u>Other Compt Approved</u> <u>(28)</u>	<u>Athletic / Activity</u> <u>(29)</u>
Liabilities And Deferred Inflows Of Resources And Fund Balances					
Liabilities					
0400 Due to Other Funds	2,996,931				
0411 Due to Other Governments					
0412 Due to Primary Government					
0413 Due to Component Unit					
0420 Accounts Payable	896,011				6,650
0430 Contracts Payable					
0440 Current Portion of Long-Term Debt					
0450 Short-Term Payables					
0461 Accrued Salaries and Benefits	10,864,604				
0462 Payroll Deductions and Withholding					
0480 Unearned Revenues					
0490 Other Current Liabilities	734,535				
Total Liabilities	\$15,492,081				\$6,650
0950 Deferred Inflows of Resources	959,414				
Fund Balances					
0810 Nonspendable Fund Balance	9,961				
0820 Restricted Fund Balance					
0830 Committed Fund Balance	23,964,184				19,199
0840 Assigned Fund Balance					
0850 Unassigned Fund Balance	9,198,466				
Total Fund Balances	\$33,172,611				\$19,199
Total Liabilities, Deferred Inflows Of Resources And Fund Balances	\$49,624,106				\$25,849

Amounts Expressed in Whole Dollars	<u>Capital Reserve (690.</u> <u>1850)</u> <u>(31)</u>	<u>Capital Reserve (1431)</u> <u>(32)</u>	<u>Other Capital Projects</u> <u>Fund</u> <u>(39)</u>	<u>Debt Service</u> <u>(40)</u>	<u>Permanent</u> <u>(90)</u>
Liabilities And Deferred Inflows Of Resources And Fund Balances					
Liabilities					
0400 Due to Other Funds			3,069		
0411 Due to Other Governments					
0412 Due to Primary Government					
0413 Due to Component Unit					
0420 Accounts Payable		2,118,495			
0430 Contracts Payable					
0440 Current Portion of Long-Term Debt					
0450 Short-Term Payables					
0461 Accrued Salaries and Benefits					
0462 Payroll Deductions and Withholding					
0480 Unearned Revenues					
0490 Other Current Liabilities					
Total Liabilities		\$2,118,495	\$3,069		
0950 Deferred Inflows of Resources					
Fund Balances					
0810 Nonspendable Fund Balance					
0820 Restricted Fund Balance		9,321,114	19,582	2,943,266	
0830 Committed Fund Balance					
0840 Assigned Fund Balance					
0850 Unassigned Fund Balance					
Total Fund Balances		\$9,321,114	\$19,582	\$2,943,266	
Total Liabilities, Deferred Inflows Of Resources And Fund Balances		\$11,439,609	\$22,651	\$2,943,266	

Amounts Expressed in Whole Dollars

Total Governmental Funds

Liabilities And Deferred Inflows Of Resources And Fund Balances

Liabilities	
0400 Due to Other Funds	3,000,000
0411 Due to Other Governments	
0412 Due to Primary Government	
0413 Due to Component Unit	
0420 Accounts Payable	3,021,156
0430 Contracts Payable	
0440 Current Portion of Long-Term Debt	
0450 Short-Term Payables	
0461 Accrued Salaries and Benefits	10,864,604
0462 Payroll Deductions and Withholding	
0480 Unearned Revenues	
0490 Other Current Liabilities	734,535
Total Liabilities	\$17,620,295
0950 Deferred Inflows of Resources	959,414
Fund Balances	
0810 Nonspendable Fund Balance	9,961
0820 Restricted Fund Balance	12,283,962
0830 Committed Fund Balance	23,983,383
0840 Assigned Fund Balance	
0850 Unassigned Fund Balance	9,198,466
Total Fund Balances	\$45,475,772
Total Liabilities, Deferred Inflows Of Resources And Fund Balances	\$64,055,481

Amounts Expressed in Whole Dollars	<u>General Fund</u> <u>(10)</u>	<u>Student Sponsored</u> <u>Activity Fund</u> <u>(21)</u>	<u>Public Purpose Trust</u> <u>(27)</u>	<u>Other Compt Approved</u> <u>(28)</u>	<u>Athletic / Activity</u> <u>(29)</u>
Revenues					
6000 Revenue from Local Sources	94,257,809				897
7000 Revenue from State Sources	16,828,468				
8000 Revenue from Federal Sources	2,179,287				
Total Revenues	\$113,265,564				\$897
Expenditures					
1000 Instruction	60,963,671				
2000 Support Services	36,217,022				
3000 Operation of Non-Instructional Services	1,716,241				36,575
4000 Facilities Acquisition, Construction and Improvement Services	85,057				
5110 Debt Service	7,536,822				
5130 Refund of Prior Year Revenues / Receipts	4,248				
5140 Leases and Other Right-to-Use Arrangements	398,731				
Total Expenditures	\$106,921,792				\$36,575
Excess (Deficiency) Of Revenues Over Expenditures	\$6,343,772				(\$35,678)
Other Financing Sources (Uses)					
9110 Face Value of Bonds Issued					
9120 Proceeds from Refunding of Bonds					
9130 Bond Premiums					
9200 Proceeds from Extended Term Financing, Leases, and Other Right-to-Use Arrangements	305,507				
9300 Interfund Transfers - IN					45,000
9400 Sale of or Compensation for Loss of Fixed Assets	32,448				
9710 Transfers from Component Units					
9720 Transfers from Primary Governments					
9910 Other Financing Sources Not Listed in the 9000 Series					
9990 Insurance Recoveries					
5120 Debt Service – Refunded Bonds					
5150 Bond Discounts					
5200 Interfund Transfers – Out	4,830,465				
5300 Transfers Out to Component Units/Primary Governments					
Total Other Financing Sources (Uses)	(\$4,492,510)				\$45,000

Amounts Expressed in Whole Dollars	<u>Capital Reserve (690.1850)</u> <u>(31)</u>	<u>Capital Reserve (1431)</u> <u>(32)</u>	<u>Other Capital Projects</u> <u>Fund</u> <u>(39)</u>	<u>Debt Service</u> <u>(40)</u>	<u>Permanent</u> <u>(90)</u>
Revenues					
6000 Revenue from Local Sources		205,885	100,228	(58,113)	
7000 Revenue from State Sources					
8000 Revenue from Federal Sources					
Total Revenues		\$205,885	\$100,228	(\$58,113)	
Expenditures					
1000 Instruction					
2000 Support Services		1,389,251	648,108		
3000 Operation of Non-Instructional Services					
4000 Facilities Acquisition, Construction and Improvement Services		2,279,520	6,990,788		
5110 Debt Service					
5130 Refund of Prior Year Revenues / Receipts					
5140 Leases and Other Right-to-Use Arrangements					
Total Expenditures		\$3,668,771	\$7,638,896		
Excess (Deficiency) Of Revenues Over Expenditures		(\$3,462,886)	(\$7,538,668)	(\$58,113)	
Other Financing Sources (Uses)					
9110 Face Value of Bonds Issued					
9120 Proceeds from Refunding of Bonds			18,013,000		
9130 Bond Premiums			634,016		
9200 Proceeds from Extended Term Financing, Leases, and Other Right-to-Use Arrangements			401,363		
9300 Interfund Transfers - IN		4,575,000		210,465	
9400 Sale of or Compensation for Loss of Fixed Assets					
9710 Transfers from Component Units					
9720 Transfers from Primary Governments					
9910 Other Financing Sources Not Listed in the 9000 Series					
9990 Insurance Recoveries					
5120 Debt Service – Refunded Bonds			18,400,271		
5150 Bond Discounts					
5200 Interfund Transfers – Out					
5300 Transfers Out to Component Units/Primary Governments					
Total Other Financing Sources (Uses)		\$4,575,000	\$648,108	\$210,465	

Amounts Expressed in Whole Dollars	<u>Total Governmental Funds</u>
Revenues	
6000 Revenue from Local Sources	94,506,706
7000 Revenue from State Sources	16,828,468
8000 Revenue from Federal Sources	2,179,287
Total Revenues	\$113,514,461
Expenditures	
1000 Instruction	60,963,671
2000 Support Services	38,254,381
3000 Operation of Non-Instructional Services	1,752,816
4000 Facilities Acquisition, Construction and Improvement Services	9,355,365
5110 Debt Service	7,536,822
5130 Refund of Prior Year Revenues / Receipts	4,248
5140 Leases and Other Right-to-Use Arrangements	398,731
Total Expenditures	\$118,266,034
Excess (Deficiency) Of Revenues Over Expenditures	(\$4,751,573)
Other Financing Sources (Uses)	
9110 Face Value of Bonds Issued	
9120 Proceeds from Refunding of Bonds	18,013,000
9130 Bond Premiums	634,016
9200 Proceeds from Extended Term Financing, Leases, and Other Right-to-Use Arrangements	706,870
9300 Interfund Transfers - IN	4,830,465
9400 Sale of or Compensation for Loss of Fixed Assets	32,448
9710 Transfers from Component Units	
9720 Transfers from Primary Governments	
9910 Other Financing Sources Not Listed in the 9000 Series	
9990 Insurance Recoveries	
5120 Debt Service – Refunded Bonds	18,400,271
5150 Bond Discounts	
5200 Interfund Transfers – Out	4,830,465
5300 Transfers Out to Component Units/Primary Governments	
Total Other Financing Sources (Uses)	\$986,063

Amounts Expressed in Whole Dollars	<u>General Fund</u> <u>(10)</u>	<u>Student Sponsored</u> <u>Activity Fund</u> <u>(21)</u>	<u>Public Purpose Trust</u> <u>(27)</u>	<u>Other Compt Approved</u> <u>(28)</u>	<u>Athletic / Activity</u> <u>(29)</u>
Special And Extraordinary Items					
9920 Special Items – Gains					
9930 Extraordinary Items – Gains					
5520 Special Items – Losses					
5530 Extraordinary Items – Losses					
Net Change In Fund Balances	\$1,851,262				\$9,322
Fund Balance					
0001 Fund Balance - Beginning of Fiscal Year	31,321,349				9,877
Fund Balance - End Of Year	\$33,172,611				\$19,199

Amounts Expressed in Whole Dollars	<u>Capital Reserve (690.1850)</u> <u>(31)</u>	<u>Capital Reserve (1431)</u> <u>(32)</u>	<u>Other Capital Projects</u> <u>Fund</u> <u>(39)</u>	<u>Debt Service</u> <u>(40)</u>	<u>Permanent</u> <u>(90)</u>
Special And Extraordinary Items					
9920 Special Items – Gains					
9930 Extraordinary Items – Gains					
5520 Special Items – Losses					
5530 Extraordinary Items – Losses					
Net Change In Fund Balances		\$1,112,114	(\$6,890,560)	\$152,352	
Fund Balance					
0001 Fund Balance - Beginning of Fiscal Year		8,208,999	6,910,143	2,790,914	
Fund Balance - End Of Year		\$9,321,113	\$19,583	\$2,943,266	

Amounts Expressed in Whole Dollars	<u>Total Governmental Funds</u>
Special And Extraordinary Items	
9920 Special Items – Gains	
9930 Extraordinary Items – Gains	
5520 Special Items – Losses	
5530 Extraordinary Items – Losses	
Net Change In Fund Balances	(\$3,765,510)
Fund Balance	
0001 Fund Balance - Beginning of Fiscal Year	49,241,282
Fund Balance - End Of Year	\$45,475,772

Amounts Expressed in Whole Dollars	<u>Food Service</u> <u>(51)</u>	<u>Child Care</u> <u>Operations</u> <u>(52)</u>	<u>Other Enterprise</u> <u>(58)</u>	<u>TOTAL</u>	<u>Internal Service</u> <u>(60)</u>
Assets And Deferred Outflows Of Resources					
Current Assets					
0100 Cash and Cash Equivalents	949,127			949,127	
0110 Investments					
0130 Due From Other Funds	7,770			7,770	
0141 Due From Other Governments	36,167			36,167	
0142 State Revenue Receivable					
0143 Federal Revenue Receivable					
0146 Due from Primary Government					
0147 Due from Component Unit					
0150 Other Receivables					
0170 Inventories	41,926			41,926	
0180 Prepaid Expenses (Expenditures)	794			794	8,893,975
0190 Other Current Assets					
Total Current Assets	\$1,035,784			\$1,035,784	\$8,893,975
Noncurrent Assets					
0211 Land					
0212 Site Improvements (Net)					
0220 Buildings and Building Improvements (Net)					
0230 Tangible Property and Intangible Right-To-Use Assets (Net)	327,092			327,092	
0250 Construction in Progress					
0260 Long Term Prepayments					
0290 Other Noncurrent Assets					
Total Noncurrent Assets	\$327,092			\$327,092	
0910 Deferred Outflows of Resources	244,050			244,050	
Total Assets And Deferred Outflows Of Resources	\$1,606,926			\$1,606,926	\$8,893,975

Amounts Expressed in Whole Dollars	<u>Food Service</u> <u>(51)</u>	<u>Child Care</u> <u>Operations</u> <u>(52)</u>	<u>Other Enterprise</u> <u>(58)</u>	<u>TOTAL</u>	<u>Internal Service</u> <u>(60)</u>
Liabilities And Deferred Inflows Of Resources And Net Position					
Current Liabilities					
0400 Due to Other Funds	20,714			20,714	
0411 Due to Other Governments					
0413 Due to Component Unit					
0420 Accounts Payable	399			399	
0430 Contracts Payable					
0440 Current Portion of Long-Term Debt					
0450 Short-Term Payables					
0461 Accrued Salaries and Benefits					
0462 Payroll Deductions and Withholding					
0480 Unearned Revenues	129,661			129,661	
0490 Other Current Liabilities					
Total Current Liabilities	\$150,774			\$150,774	
Noncurrent Liabilities					
0510 Bonds Payable					
0520 Extended-Term Financing Agreements Payable					
0530 Lease and Other Right-To-Use Obligations					
0540 Accumulated Compensated Absences					
0550 Authority Lease Obligations					
0560 Other Post-Employment Benefits (OPEB)	107,261			107,261	
0570 Net Pension Liability	1,429,511			1,429,511	
0599 Other Noncurrent Liabilities					
Total Noncurrent Liabilities	\$1,536,772			\$1,536,772	
Total Liabilities	\$1,687,546			\$1,687,546	
0950 Deferred Inflows of Resources	63,554			63,554	
Net Position					
0791 Net Investment in Capital Assets	327,092			327,092	
0008 Restricted Net Position (0792 – 0798)					
0799 Unrestricted Net Position	(471,266)			(471,266)	8,893,975
Total Net Position	(\$144,174)			(\$144,174)	\$8,893,975
Total Liabilities And Deferred Inflows Of Resources And Net Position	\$1,606,926			\$1,606,926	\$8,893,975

Amounts Expressed in Whole Dollars	<u>Food Service</u> <u>(51)</u>	<u>Child Care Operations</u> <u>(52)</u>	<u>Other Enterprise</u> <u>(58)</u>	<u>TOTAL</u>	<u>Internal Service</u> <u>(60)</u>
Operating Revenues					
6600 Food Service Revenue	1,282,298			1,282,298	
0071 Charges for Services					12,938,380
0072 Other Operating Revenue					
Total Operating Revenues	\$1,282,298			\$1,282,298	\$12,938,380
Operating Expenses					
100 Personnel Services – Salaries	534,607			534,607	
200 Personnel Services – Employee Benefits	326,634			326,634	12,479,503
300 Purchased Professional and Technical Services	1,067			1,067	1,022,432
400 Purchased Property Services	75,704			75,704	
500 Other Purchased Services	56,327			56,327	
600 Supplies	1,156,721			1,156,721	
740 Depreciation	37,318			37,318	
770 Amortization Expense					
810 Dues and Fees					
880 Refunds of Prior Years' Receipts					
890 Miscellaneous Expenditures					
Total Operating Expenses	\$2,188,378			\$2,188,378	\$13,501,935
Operating Income (Loss)	(\$906,080)			(\$906,080)	(\$563,555)
Non Operating Revenues (Expenses)					
6500 Earnings on Investments	28,265			28,265	392,122
6830 Federal Revenue from Intermediary Sources					
6920 Contributions and Donations from Private Sources					
6930 Gains or Losses on Sale of Fixed Assets					
6991 Refunds of a Prior Year Expenditure					
7000 Revenue from State Sources	265,188			265,188	
8000 Revenue from Federal Sources	763,421			763,421	
9990 Insurance Recoveries					
820 Claims and Judgments Against the LEA					
830 Interest					
TOTAL Non Operating Revenues (Expenses)	\$1,056,874			\$1,056,874	\$392,122
Income (Loss) Before Contributions And Transfers	\$150,794			\$150,794	(\$171,433)

Amounts Expressed in Whole Dollars	<u>Food Service</u> <u>(51)</u>	<u>Child Care Operations</u> <u>(52)</u>	<u>Other Enterprise</u> <u>(58)</u>	<u>TOTAL</u>	<u>Internal Service</u> <u>(60)</u>
Contributions, Transfers, and Special and Extraordinary Items					
5200 Interfund Transfers – Out					
5300 Transfers Out to Component Units/Primary Governments					
5520 Special Items – Losses					
5530 Extraordinary Items – Losses					
9300 Interfund Transfers - IN					
9500 Capital Contributions					
9700 Transfers IN From Component Units/Primary Governments					
9920 Special Items – Gains					
9930 Extraordinary Items – Gains					
Change In Net Position	\$150,794			\$150,794	(\$171,433)
0002 Net Position - Beginning of Fiscal Year	(294,969)			(294,969)	9,065,408
0003 Accounting Changes / Residual Equity Transfers					
Net Position - End Of Year	(\$144,175)			(\$144,175)	\$8,893,975

Amounts Expressed in Whole Dollars	<u>Food Service</u> <u>(51)</u>	<u>Child Care Operations</u> <u>(52)</u>	<u>Other Enterprise</u> <u>(58)</u>	<u>TOTAL</u>	<u>Internal Service(60)</u>
Cash Flows From Operating Activities					
0011 Cash Receipts From Users	1,309,096			1,309,096	
0012 Cash Receipts From Assessments Made to Other Funds					12,938,380
0013 Cash Receipts From Earnings on Investments					
0014 Cash Receipts From Other Operating Revenue					
0015 Cash Payments To Employees For Services	937,412			937,412	
0016 Cash Payments For Insurance Claims					12,308,070
0017 Cash Payments To Suppliers For Goods and Services	1,252,561			1,252,561	
0018 Cash Payments For Other Operating Expenses					1,022,432
Net Cash Provided By (Used For) Operating Activities	(\$880,877)			(\$880,877)	(\$392,122)
Cash Flows From Non-Capital Financing Activities					
0021 Receipts From Local Sources - 6000					
0022 Receipts From State Sources - 7000	258,570			258,570	
0023 Receipts From Federal Sources -8000	710,599			710,599	
0024 Notes and Loans Received (Repaid)					
0025 Interest Paid on Notes/Loans - 5100-830					
0026 Operating Transfers In (Out)/Residual Equity Trans					
0027 Operating Transfers In (Out) Primary Government / Comp Unit					
0028 Receipts From Refund of Prior Year Expenditures - 6991					
0029 Special and Extraordinary Gains (losses)					
0030 Receipts from Insurance Recoveries -9990					
Net Cash Prov By (Used for) Non-Capital Financing Activities	\$969,169			\$969,169	
Cash Flows From Capital and Related Financing Activities					
0031 Payments For Fac Acq, Const, and Imp - 4000	(168,742)			(168,742)	
0032 Gain / (Loss) on Sale of Fixed Assets - 6930					
0033 Proceeds From Extended Term Financing - 9200					
0034 Principal Paid on Financing Agreements					
0035 Interest Paid on Financing Agreements - 5100-830					
0036 (Inc) Dec in Contributed Capital					
Net Cash Prov By (Used for) Capital and Related Financing Activities	(\$168,742)			(\$168,742)	
Cash Flows From Investing Activities					
0041 Earnings on Investments - 6500	28,265			28,265	392,122
0042 Purchase of Inv Securities / Deposits to Inv Pools					
0043 Receipts From Investment Pool Withdrawals					
0044 Proceeds from Sale and Maturity of Inv Securities					

LEA : 125237603 Radnor Township SD

Printed 1/5/2024 11:51:47 AM

0045 Loans Received (Paid)

Net Cash Prov By (Used for) Investing Activities	\$28,265	\$28,265	\$392,122
---	-----------------	-----------------	------------------

	<u>Food Service</u> <u>(51)</u>	<u>Child Care Operations</u> <u>(52)</u>	<u>Other Enterprise</u> <u>(58)</u>	<u>TOTAL</u>	<u>Internal Service</u> <u>(60)</u>
Net Increase (Decrease) in Cash Flows	(52,185)			(52,185)	
0004 Cash and Cash Equivalents Beginning of Year	1,001,312			1,001,312	
Cash and Cash Equivalents at Year End	\$949,127			\$949,127	
Reconciliation of Operating Income (Loss) To Net Cash Provided by (Used For) Operating Activities					
0005 Operating Income (Loss) per REP	(906,080)			(906,080)	(563,555)
Adjustments					
0051 Depreciation and Net Amortization	37,318			37,318	
0052 Provision for Uncollectible Accounts					
0053 Other Adjustments	122,052			122,052	
Effect of Changes in Assets, Liabilities, Deferred Outflows and Deferred Inflows					
0054 (Inc) Dec In Accounts Receivable (0120-0150)	(6,034)			(6,034)	
0055 Advances to Other Funds	20,677			20,677	
0056 (Inc) Dec in Inventories (0170)	(20,024)			(20,024)	
0057 (Inc) Dec in Prepaid Expenses (0180)	(794)			(794)	171,433
0058 (Inc) Dec in Other Current or Noncurrent Assets					
0064 Deferred Outflows (0910)	28,535			28,535	
0059 Inc (Dec) in Accounts Payable (0400-0450)	(63,976)			(63,976)	
0060 Inc (Dec) in Accrued Salaries/Benefits (0461)					
0065 Inc (Dec) in Net Pension Liabilities (0570)	27,301			27,301	
0066 Inc (Dec) in Other Postemp Benefit Oblig (0560)	27,823			27,823	
0061 Inc (Dec) in Payroll Deductions/Withholding (0462)					
0062 Inc (Dec) in Unearned Revenue (0480)	32,832			32,832	
0063 Inc (Dec) in Other Current or Noncurrent Liabilities					
0067 Deferred Inflows (0950)	(180,508)			(180,508)	
Total Adjustments	\$25,202			\$25,202	\$171,433
Cash Provided By (Used for) Total	(\$880,878)			(\$880,878)	(\$392,122)

COMBINED STATEMENT OF CASH FLOWS
SCHEDULE OF NONCASH INVESTING, CAPITAL, AND FINANCING ACTIVITIES

Explanation of Transaction and Balance Sheet Effect	Amount
USDA Donated Commodities	122,052
Total	\$122,052

LEA : 125237603 Radnor Township SD

Printed 1/5/2024 11:51:48 AM

Amounts Expressed in Whole Dollars

Private Purpose Trust
(71)

Investment Trust
(72)

Pension Trust
(73)

Student Activity Custodial
(81)

Assets And Deferred Outflows Of Resources

Assets

0100 Cash and Cash Equivalents	323,769			90,142
0110 Investments				
0130 Due From Other Funds				
0140 Due from Other Governments, Primary Government and Component Units				
0150 Other Receivables				
0170 Inventories				
0180 Prepaid Expenses (Expenditures)				
0190 Other Current Assets				
0220 Buildings and Building Improvements (Net)				
0230 Tangible Property and Intangible Right-To-Use Assets (Net)				

Total Assets	\$323,769			\$90,142
---------------------	------------------	--	--	-----------------

0910 Deferred Outflows of Resources

Total Assets And Deferred Outflows Of Resources	\$323,769			\$90,142
--	------------------	--	--	-----------------

LEA : 125237603 Radnor Township SD

Printed 1/5/2024 11:51:48 AM

Amounts Expressed in Whole Dollars	<u>Other Custodial</u> <u>(89)</u>	<u>Fiduciary Component Units</u> <u>(98)</u>	<u>Total Fiduciary Funds</u>
Assets And Deferred Outflows Of Resources			
Assets			
0100 Cash and Cash Equivalents			413,911
0110 Investments			
0130 Due From Other Funds			
0140 Due from Other Governments, Primary Government and Component Units			
0150 Other Receivables			
0170 Inventories			
0180 Prepaid Expenses (Expenditures)			
0190 Other Current Assets			
0220 Buildings and Building Improvements (Net)			
0230 Tangible Property and Intangible Right-To-Use Assets (Net)			
Total Assets			\$413,911
0910 Deferred Outflows of Resources			
Total Assets And Deferred Outflows Of Resources			\$413,911

LEA : 125237603 Radnor Township SD

Printed 1/5/2024 11:51:48 AM

Amounts Expressed in Whole Dollars	<u>Private Purpose Trust</u> (71)	<u>Investment Trust</u> (72)	<u>Pension Trust</u> (73)	<u>Student Activity Custodial</u> (81)
Liabilities, Deferred Inflows Of Resources And Net Position				
Liabilities				
0400 Due to Other Funds				
0410 Due to Other Governments, Primary Government and Component Units				
0420 Accounts Payable	11,079			15,109
0430 Contracts Payable				
0450 Short-Term Payables				
0460 Payroll Accruals and Withholdings				
0480 Unearned Revenues				
0490 Other Current Liabilities				
Total Liabilities	\$11,079			\$15,109
0950 Deferred Inflows of Resources				
Net Position				
0791 Net Investment in Capital Assets				
0009 Restricted Net Position (0792 – 0798)	312,690			75,033
0799 Unrestricted Net Position				
Total Net Position	\$312,690			\$75,033
Total Liabilities, Deferred Inflows Of Resources And Net Position	\$323,769			\$90,142

LEA : 125237603 Radnor Township SD

Printed 1/5/2024 11:51:48 AM

Amounts Expressed in Whole Dollars	<u>Other Custodial</u> <u>(89)</u>	<u>Fiduciary Component Units</u> <u>(98)</u>	<u>Total Fiduciary Funds</u>
Liabilities, Deferred Inflows Of Resources And Net Position			
Liabilities			
0400 Due to Other Funds			
0410 Due to Other Governments, Primary Government and Component Units			
0420 Accounts Payable			26,188
0430 Contracts Payable			
0450 Short-Term Payables			
0460 Payroll Accruals and Withholdings			
0480 Unearned Revenues			
0490 Other Current Liabilities			
Total Liabilities			\$26,188
0950 Deferred Inflows of Resources			
Net Position			
0791 Net Investment in Capital Assets			
0009 Restricted Net Position (0792 – 0798)			387,723
0799 Unrestricted Net Position			
Total Net Position			\$387,723
Total Liabilities, Deferred Inflows Of Resources And Net Position			\$413,911

Amounts Expressed in Whole Dollars	<u>Private Purpose Trust</u> <u>(71)</u>	<u>Investment Trust</u> <u>(72)</u>	<u>Pension Trust</u> <u>(73)</u>	<u>Student Activity</u> <u>Custodial</u> <u>(81)</u>	<u>Other Custodial</u> <u>(89)</u>	<u>Fiduciary Component</u> <u>Units</u> <u>(98)</u>
Additions						
0091 Gifts and Contributions	30,372			128,480		
0095 Net Investment Earnings						
0092 Other Additions						
Deductions						
0093 Scholarships Awarded	37,375					
0094 Other Deductions				114,268		
Change In Net Position	(\$7,003)			\$14,212		
0006 Net Position – Beginning of Fiscal Year	319,693			60,821		
0007 Net Position Held in Trust for Pension Benefits						
Net Position - End of Fiscal Year	\$312,690			\$75,033		

Amounts Expressed in Whole Dollars	<u>Total Fiduciary Funds</u>
Additions	
0091 Gifts and Contributions	158,852
0095 Net Investment Earnings	
0092 Other Additions	
Deductions	
0093 Scholarships Awarded	37,375
0094 Other Deductions	114,268
Change In Net Position	\$7,209
0006 Net Position – Beginning of Fiscal Year	380,514
0007 Net Position Held in Trust for Pension Benefits	
Net Position - End of Fiscal Year	\$387,723

	<u>Revenue Reported In Current Year</u>	<u>Current Year Tax Accrual</u>	<u>Prior Year Tax Accrual</u>	<u>Taxes Collected In Current Year</u>
<u>Revenue from Local Sources</u>				
6111 Current Real Estate Taxes	86,586,549.84			86,586,549.84
6112 Interim Real Estate Taxes	52,316.06			52,316.06
6113 Public Utility Realty Taxes	80,865.40			80,865.40
6114 Payments in Lieu of Current Taxes - State / Local	271,131.42			271,131.42
6143 Current Act 511 Local Services Taxes	106,617.44			106,617.44
6153 Current Act 511 Real Estate Transfer Taxes	2,155,640.18			2,155,640.18
6411 Delinquent Real Estate Taxes	1,142,676.64			1,142,676.64
6500 Earnings on Investments	1,860,012.85			
6832 Federal IDEA Revenue Received as Pass Through	534,716.00			
6910 Rentals	101,161.14			
6920 Contributions and Donations from Private Sources	800.00			
6944 Receipts from Other LEAs in Pennsylvania - Education	1,025,456.60			
6991 Refunds of a Prior Year Expenditure	73,776.26			
6999 Other Revenues Not Specified Above	266,089.37			
TOTAL Revenue from Local Sources	\$94,257,809.20			\$90,395,796.98

**Revenue Reported
In Current Year**

Revenue from State Sources

7111 Basic Education Funding-Formula	2,679,897.90		
7112 Basic Education Funding-Social Security	1,723,918.72		
7160 Tuition for Orphans Subsidy	19,276.06		
7271 Special Education funds for School-Aged Pupils	1,345,791.72		
7311 Pupil Transportation Subsidy	410,340.29		
7312 Nonpublic and Charter School Pupil Transportation Subsidy	129,745.00		
7320 Rental and Sinking Fund Payments / Building Reimbursement Subsidy	76,147.38		
7330 Health Services (Medical, Dental, Nurse, Act 25)	125,638.83		
7340 State Property Tax Reduction Allocation	1,831,701.07		
7361 School Safety and Security Grants	2,500.00		
7505 Ready to Learn Block Grant	113,925.00		
7820 State Share of Retirement Contributions	8,369,586.25		
TOTAL Revenue from State Sources	\$16,828,468.22		

**Revenue Reported
In Current Year**

Revenue from Federal Sources

8514 Title I - Improving the Academic Achievement of the Disadvantaged	546,527.94			
8515 Title II - Preparing, Training, and Recruiting High Quality Teachers and Principals	61,555.00			
8516 Title III - Language Instruction for English Learners and Immigrant Students	25,884.36			
8517 Title IV - 21st Century Schools	20,450.79			
8690 Other Restricted Federal Grants-in-Aid Through the Commonwealth of PA	39,432.96			
8731 ARRA - Build America Bonds	79,578.24			
8732 ARRA - Qualified School Construction Bonds (QSCB)	171,838.97			
8744 ARP ESSER - Elementary and Secondary School Emergency Relief Fund	1,105,213.73			
8749 Other CARES Act Funding	44,480.45			
8751 ARP ESSER Learning Loss	77,118.27			
8752 ARP ESSER Summer Programs	2,954.75			
8820 Medical Assistance Reimbursement for Administrative Claiming (Quarterly) Program	4,251.07			
TOTAL Revenue from Federal Sources	\$2,179,286.53			

	Revenue Reported In Current Year	
<u>Other Financing Sources</u>		
9220 Leases and Other Right-to-Use Arrangements	305,506.94	
9400 Sale of or Compensation for Loss of Fixed Assets	32,447.50	
TOTAL Other Financing Sources	\$337,954.44	
TOTAL FROM ALL SOURCES	\$113,603,518.39	\$90,395,796.98

LEA : 125237603 Radnor Township SD

Printed 1/5/2024 11:51:53 AM

	<u>General Fund (10)</u>	<u>Student Sponsored Activity Fund (21)</u>	<u>Public Purpose Trust (27)</u>	<u>Other Compt Approved (28)</u>	<u>Athletic / Activity (29)</u>	<u>Capital Reserve (690, 1850) (31)</u>
6000 Revenue from Local Sources						
6111 Current Real Estate Taxes	86,586,549.84					
6112 Interim Real Estate Taxes	52,316.06					
6113 Public Utility Realty Taxes	80,865.40					
6114 Payments in Lieu of Current Taxes - State / Local	271,131.42					
6143 Current Act 511 Local Services Taxes	106,617.44					
6153 Current Act 511 Real Estate Transfer Taxes	2,155,640.18					
6411 Delinquent Real Estate Taxes	1,142,676.64					
6500 Earnings on Investments	1,860,012.85				897.00	
6832 Federal IDEA Revenue Received as Pass Through	534,716.00					
6910 Rentals	101,161.14					
6920 Contributions and Donations from Private Sources	800.00					
6944 Receipts from Other LEAs in Pennsylvania - Education	1,025,456.60					
6991 Refunds of a Prior Year Expenditure	73,776.26					
6999 Other Revenues Not Specified Above	266,089.37					
6000 Total Revenue from Local Sources	\$94,257,809.20				\$897.00	
7000 Revenue from State Sources						
7111 Basic Education Funding-Formula	2,679,897.90					
7112 Basic Education Funding-Social Security	1,723,918.72					
7160 Tuition for Orphans Subsidy	19,276.06					
7271 Special Education funds for School-Aged Pupils	1,345,791.72					
7311 Pupil Transportation Subsidy	410,340.29					
7312 Nonpublic and Charter School Pupil Transportation Subsidy	129,745.00					
7320 Rental and Sinking Fund Payments / Building Reimbursement Subsidy	76,147.38					
7330 Health Services (Medical, Dental, Nurse, Act 25)	125,638.83					
7340 State Property Tax Reduction Allocation	1,831,701.07					
7361 School Safety and Security Grants	2,500.00					
7505 Ready to Learn Block Grant	113,925.00					
7820 State Share of Retirement Contributions	8,369,586.25					
7000 Total Revenue from State Sources	\$16,828,468.22					
8000 Revenue from Federal Sources						
8514 Title I - Improving the Academic Achievement of the Disadvantaged	546,527.94					
8515 Title II - Preparing, Training, and Recruiting High Quality Teachers and Principals	61,555.00					

	<u>Capital Reserve</u> <u>(1431) (32)</u>	<u>Other Capital</u> <u>Projects Fund (39)</u>	<u>Debt Service (40)</u>	<u>Permanent (90)</u>	<u>Total</u>
6000 Revenue from Local Sources					
6111 Current Real Estate Taxes					86,586,549.84
6112 Interim Real Estate Taxes					52,316.06
6113 Public Utility Realty Taxes					80,865.40
6114 Payments in Lieu of Current Taxes - State / Local					271,131.42
6143 Current Act 511 Local Services Taxes					106,617.44
6153 Current Act 511 Real Estate Transfer Taxes					2,155,640.18
6411 Delinquent Real Estate Taxes					1,142,676.64
6500 Earnings on Investments	205,885.01	100,227.87	(58,113.00)		2,108,909.73
6832 Federal IDEA Revenue Received as Pass Through					534,716.00
6910 Rentals					101,161.14
6920 Contributions and Donations from Private Sources					800.00
6944 Receipts from Other LEAs in Pennsylvania - Education					1,025,456.60
6991 Refunds of a Prior Year Expenditure					73,776.26
6999 Other Revenues Not Specified Above					266,089.37
6000 Total Revenue from Local Sources	\$205,885.01	\$100,227.87	(\$58,113.00)		\$94,506,706.08
7000 Revenue from State Sources					
7111 Basic Education Funding-Formula					2,679,897.90
7112 Basic Education Funding-Social Security					1,723,918.72
7160 Tuition for Orphans Subsidy					19,276.06
7271 Special Education funds for School-Aged Pupils					1,345,791.72
7311 Pupil Transportation Subsidy					410,340.29
7312 Nonpublic and Charter School Pupil Transportation Subsidy					129,745.00
7320 Rental and Sinking Fund Payments / Building Reimbursement Subsidy					76,147.38
7330 Health Services (Medical, Dental, Nurse, Act 25)					125,638.83
7340 State Property Tax Reduction Allocation					1,831,701.07
7361 School Safety and Security Grants					2,500.00
7505 Ready to Learn Block Grant					113,925.00
7820 State Share of Retirement Contributions					8,369,586.25
7000 Total Revenue from State Sources					\$16,828,468.22
8000 Revenue from Federal Sources					
8514 Title I - Improving the Academic Achievement of the Disadvantaged					546,527.94
8515 Title II - Preparing, Training, and Recruiting High Quality Teachers and Principals					61,555.00

	<u>General Fund (10)</u>	<u>Student Sponsored Activity Fund (21)</u>	<u>Public Purpose Trust (27)</u>	<u>Other Compt Approved (28)</u>	<u>Athletic / Activity (29)</u>	<u>Capital Reserve (690.1850) (31)</u>
8000 Revenue from Federal Sources						
8516 Title III - Language Instruction for English Learners and Immigrant Students	25,884.36					
8517 Title IV - 21st Century Schools	20,450.79					
8690 Other Restricted Federal Grants-in-Aid Through the Commonwealth of PA	39,432.96					
8731 ARRA - Build America Bonds	79,578.24					
8732 ARRA - Qualified School Construction Bonds (QSCB)	171,838.97					
8744 ARP ESSER - Elementary and Secondary School Emergency Relief Fund	1,105,213.73					
8749 Other CARES Act Funding	44,480.45					
8751 ARP ESSER Learning Loss	77,118.27					
8752 ARP ESSER Summer Programs	2,954.75					
8820 Medical Assistance Reimbursement for Administrative Claiming (Quarterly) Program	4,251.07					
8000 Total Revenue from Federal Sources	\$2,179,286.53					
9000 Other Financing Sources						
9120 Proceeds from Refunding of Bonds						
9130 Bond Premiums						
9220 Leases and Other Right-to-Use Arrangements	305,506.94					
9310 General Fund Transfers					45,000.00	
9400 Sale of or Compensation for Loss of Fixed Assets	32,447.50					
9000 Total Other Financing Sources	\$337,954.44				\$45,000.00	
Total From All Sources	\$113,603,518.39				\$45,897.00	

	<u>Capital Reserve</u> <u>(1431) (32)</u>	<u>Other Capital</u> <u>Projects Fund (39)</u>	<u>Debt Service (40)</u>	<u>Permanent (90)</u>	<u>Total</u>
8000 Revenue from Federal Sources					
8516 Title III - Language Instruction for English Learners and Immigrant Students					25,884.36
8517 Title IV - 21st Century Schools					20,450.79
8690 Other Restricted Federal Grants-in-Aid Through the Commonwealth of PA					39,432.96
8731 ARRA - Build America Bonds					79,578.24
8732 ARRA - Qualified School Construction Bonds (QSCB)					171,838.97
8744 ARP ESSER - Elementary and Secondary School Emergency Relief Fund					1,105,213.73
8749 Other CARES Act Funding					44,480.45
8751 ARP ESSER Learning Loss					77,118.27
8752 ARP ESSER Summer Programs					2,954.75
8820 Medical Assistance Reimbursement for Administrative Claiming (Quarterly) Program					4,251.07
8000 Total Revenue from Federal Sources					\$2,179,286.53
9000 Other Financing Sources					
9120 Proceeds from Refunding of Bonds		18,013,000.00			18,013,000.00
9130 Bond Premiums		634,016.30			634,016.30
9220 Leases and Other Right-to-Use Arrangements		401,363.00			706,869.94
9310 General Fund Transfers	4,575,000.00		210,465.00		4,830,465.00
9400 Sale of or Compensation for Loss of Fixed Assets					32,447.50
9000 Total Other Financing Sources	\$4,575,000.00	\$19,048,379.30	\$210,465.00		\$24,216,798.74
Total From All Sources	\$4,780,885.01	\$19,148,607.17	\$152,352.00		\$137,731,259.57

	<u>General Fund (10)</u>	<u>Student Sponsored Activity Fund (21)</u>	<u>Public Purpose Trust (27)</u>	<u>Other Compt Approved (28)</u>	<u>Athletic / Activity (29)</u>	<u>Capital Reserve (690. 1850) (31)</u>
Revenue from Local Sources	94,257,809.20				897.00	
Revenue from State Sources	16,828,468.22					
Revenue from Federal Sources	2,179,286.53					
Other Financing Sources	337,954.44				45,000.00	
Total From All Sources	\$113,603,518.39				\$45,897.00	

	<u>Capital Reserve (1431)</u> <u>(32)</u>	<u>Other Capital Projects</u> <u>Fund (39)</u>	<u>Debt Service (40)</u>	<u>Permanent (90)</u>	<u>Total</u>
Revenue from Local Sources	205,885.01	100,227.87	(58,113.00)		94,506,706.08
Revenue from State Sources					16,828,468.22
Revenue from Federal Sources					2,179,286.53
Other Financing Sources	4,575,000.00	19,048,379.30	210,465.00		24,216,798.74
Total From All Sources	\$4,780,885.01	\$19,148,607.17	\$152,352.00		\$137,731,259.57

General Fund (10)

	<u>Total</u>
1000 Instruction	
100 Personnel Services – Salaries	
100 Personnel Services – Salaries	30,082,474.10
Total Personnel Services – Salaries	\$30,082,474.10
200 Personnel Services – Employee Benefits	
210 Group Insurance – Contracted Provider	4,495,383.58
220 Social Security Contributions	2,233,969.11
230 PSERS Retirement Contributions	10,536,142.14
250 Unemployment Compensation	4,948.62
260 Workers' Compensation	236,011.60
270 Group Insurance – Self-Insurance	1,656,267.25
Total Personnel Services – Employee Benefits	\$19,162,722.30
300 Purchased Professional and Technical Services	
322 Professional Educational Services – Ius	463,739.18
329 Professional Educational Services – Other	1,333,159.32
330 Other Professional Services	2,070,938.01
390 Other Purchased Professional and Technical Services	218,247.38
Total Purchased Professional and Technical Services	\$4,086,083.89
400 Purchased Property Services	
430 Repairs and Maintenance Services	230,166.55
Total Purchased Property Services	\$230,166.55
500 Other Purchased Services	
550 Printing and Binding	3,819.07
561 Tuition To Other School Districts Within the State	5,359.48
562 Tuition To Pennsylvania Charter Schools	300,545.70
563 Tuition To Nonpublic Schools	3,033,262.28
564 Tuition To Career and Technology Centers	653,283.89
566 Tuition To Institutions of Higher Education and Technical Institutes	1,228,186.00
567 Tuition To Approved Private Schools (APS) and PA Chartered Schools for the Deaf and Blind	468,851.24
580 Travel	1,116.53
594 IU Payment By Withholding for Institutionalized Children's Programs – Special Classes	1,022.09
599 Other Miscellaneous Purchased Services	44,623.67
Total Other Purchased Services	\$5,740,069.95
600 Supplies	
610 General Supplies	790,967.64
630 Food	17,999.41
640 Books and Periodicals	461,080.48
Total Supplies	\$1,270,047.53
700 Property	
752 Capital Equipment – Original and Additional	13,009.24
756 Capitalized Technology Equipment – Original	24,862.85
762 Capitalized Equipment - Replacement	5,040.77
766 Capitalized Technology Equipment – Replacement	344,609.26
Total Property	\$387,522.12

LEA : 125237603 Radnor Township SD

Printed 1/5/2024 11:51:57 AM

General Fund (10)

1000 Instruction	<u>Total</u>
800 <u>Other Objects</u>	
810 Dues and Fees	4,584.76
Total Other Objects	\$4,584.76
Total 1000 Instruction	\$60,963,671.20

General Fund (10)

1100 Regular Programs – Elementary / Secondary

	<u>Elementary</u>	<u>Secondary</u>	<u>Federal</u>	<u>Total</u>
100 Personnel Services – Salaries				
100 Personnel Services – Salaries	12,061,439.20	12,055,063.04	370,962.60	24,487,464.84
Total Personnel Services – Salaries	\$12,061,439.20	\$12,055,063.04	\$370,962.60	\$24,487,464.84
200 Personnel Services – Employee Benefits				
210 Group Insurance – Contracted Provider	1,870,179.75	1,811,856.46	37,192.61	3,719,228.82
220 Social Security Contributions	905,907.39	896,323.99	19,478.17	1,821,709.55
230 PSERS Retirement Contributions	4,376,198.61	4,192,413.46	49,802.04	8,618,414.11
250 Unemployment Compensation	442.92	4,412.64		4,855.56
260 Workers' Compensation	96,363.13	92,774.49	2,096.64	191,234.26
270 Group Insurance – Self-Insurance	713,020.76	701,209.47	13,752.38	1,427,982.61
Total Personnel Services – Employee Benefits	\$7,962,112.56	\$7,698,990.51	\$122,321.84	\$15,783,424.91
300 Purchased Professional and Technical Services				
322 Professional Educational Services – Ius			156,265.13	156,265.13
329 Professional Educational Services – Other	707,694.23	609,023.36		1,316,717.59
330 Other Professional Services		768.00		768.00
390 Other Purchased Professional and Technical Services			40,356.00	40,356.00
Total Purchased Professional and Technical Services	\$707,694.23	\$609,791.36	\$196,621.13	\$1,514,106.72
400 Purchased Property Services				
430 Repairs and Maintenance Services	119,933.61	61,339.22	45,000.00	226,272.83
Total Purchased Property Services	\$119,933.61	\$61,339.22	\$45,000.00	\$226,272.83
500 Other Purchased Services				
550 Printing and Binding	3,093.51	725.56		3,819.07
562 Tuition To Pennsylvania Charter Schools	78,897.43	119,428.62		198,326.05
580 Travel	698.63	417.90		1,116.53
Total Other Purchased Services	\$82,689.57	\$120,572.08		\$203,261.65
600 Supplies				
610 General Supplies	360,071.77	365,576.29	8,010.62	733,658.68
630 Food	1,437.35	14,971.93		16,409.28
640 Books and Periodicals	203,637.18	223,202.82	191.68	427,031.68
Total Supplies	\$565,146.30	\$603,751.04	\$8,202.30	\$1,177,099.64
700 Property				
752 Capital Equipment – Original and Additional	602.03	12,407.21		13,009.24
756 Capitalized Technology Equipment – Original	22,712.85	2,150.00		24,862.85
762 Capitalized Equipment - Replacement	1,697.30	3,055.50		4,752.80
766 Capitalized Technology Equipment – Replacement	302,229.70	42,379.56		344,609.26
Total Property	\$327,241.88	\$59,992.27		\$387,234.15
800 Other Objects				
810 Dues and Fees	288.62	3,946.14		4,234.76
Total Other Objects	\$288.62	\$3,946.14		\$4,234.76
Total 1100 Regular Programs – Elementary / Secondary	\$21,826,545.97	\$21,213,445.66	\$743,107.87	\$43,783,099.50

General Fund (10)

1110 Regular Programs

	<u>Elementary</u>	<u>Secondary</u>	<u>Federal</u>	<u>Total</u>
100 Personnel Services – Salaries				
100 Personnel Services – Salaries	12,061,439.20	12,055,063.04	131,679.32	24,248,181.56
Total Personnel Services – Salaries	\$12,061,439.20	\$12,055,063.04	\$131,679.32	\$24,248,181.56
200 Personnel Services – Employee Benefits				
210 Group Insurance – Contracted Provider	1,870,179.75	1,811,856.46		3,682,036.21
220 Social Security Contributions	905,907.39	896,323.99	4,000.38	1,806,231.76
230 PSERS Retirement Contributions	4,376,198.61	4,192,413.46	9,646.08	8,578,258.15
250 Unemployment Compensation	442.92	4,412.64		4,855.56
260 Workers' Compensation	96,363.13	92,774.49	477.54	189,615.16
270 Group Insurance – Self-Insurance	713,020.76	701,209.47		1,414,230.23
Total Personnel Services – Employee Benefits	\$7,962,112.56	\$7,698,990.51	\$14,124.00	\$15,675,227.07
300 Purchased Professional and Technical Services				
322 Professional Educational Services – Ius			156,265.13	156,265.13
329 Professional Educational Services – Other	707,694.23	609,023.36		1,316,717.59
330 Other Professional Services		768.00		768.00
Total Purchased Professional and Technical Services	\$707,694.23	\$609,791.36	\$156,265.13	\$1,473,750.72
400 Purchased Property Services				
430 Repairs and Maintenance Services	119,933.61	61,339.22	45,000.00	226,272.83
Total Purchased Property Services	\$119,933.61	\$61,339.22	\$45,000.00	\$226,272.83
500 Other Purchased Services				
550 Printing and Binding	3,093.51	725.56		3,819.07
562 Tuition To Pennsylvania Charter Schools	78,897.43	119,428.62		198,326.05
580 Travel	698.63	417.90		1,116.53
Total Other Purchased Services	\$82,689.57	\$120,572.08		\$203,261.65
600 Supplies				
610 General Supplies	360,071.77	365,576.29		725,648.06
630 Food	1,437.35	14,971.93		16,409.28
640 Books and Periodicals	203,637.18	223,202.82	191.68	427,031.68
Total Supplies	\$565,146.30	\$603,751.04	\$191.68	\$1,169,089.02
700 Property				
752 Capital Equipment – Original and Additional	602.03	12,407.21		13,009.24
756 Capitalized Technology Equipment – Original	22,712.85	2,150.00		24,862.85
762 Capitalized Equipment - Replacement	1,697.30	3,055.50		4,752.80
766 Capitalized Technology Equipment – Replacement	302,229.70	42,379.56		344,609.26
Total Property	\$327,241.88	\$59,992.27		\$387,234.15
800 Other Objects				
810 Dues and Fees	288.62	3,946.14		4,234.76
Total Other Objects	\$288.62	\$3,946.14		\$4,234.76
Total 1110 Regular Programs	\$21,826,545.97	\$21,213,445.66	\$347,260.13	\$43,387,251.76

General Fund (10)

	<u>Elementary</u>	<u>Secondary</u>	<u>Federal</u>	<u>Total</u>
1190 Federally-Funded Regular Programs				
100 Personnel Services – Salaries				
100 Personnel Services – Salaries			239,283.28	239,283.28
Total Personnel Services – Salaries			\$239,283.28	\$239,283.28
200 Personnel Services – Employee Benefits				
210 Group Insurance – Contracted Provider			37,192.61	37,192.61
220 Social Security Contributions			15,477.79	15,477.79
230 PSERS Retirement Contributions			40,155.96	40,155.96
260 Workers' Compensation			1,619.10	1,619.10
270 Group Insurance – Self-Insurance			13,752.38	13,752.38
Total Personnel Services – Employee Benefits			\$108,197.84	\$108,197.84
300 Purchased Professional and Technical Services				
390 Other Purchased Professional and Technical Services			40,356.00	40,356.00
Total Purchased Professional and Technical Services			\$40,356.00	\$40,356.00
600 Supplies				
610 General Supplies			8,010.62	8,010.62
Total Supplies			\$8,010.62	\$8,010.62
Total 1190 Federally-Funded Regular Programs			\$395,847.74	\$395,847.74

General Fund (10)

1200 Special Programs – Elementary / Secondary	<u>Elementary</u>	<u>Secondary</u>	<u>Federal</u>	<u>Total</u>
100 Personnel Services – Salaries				
100 Personnel Services – Salaries	2,724,424.94	2,622,947.02	39,706.07	5,387,078.03
Total Personnel Services – Salaries	\$2,724,424.94	\$2,622,947.02	\$39,706.07	\$5,387,078.03
200 Personnel Services – Employee Benefits				
210 Group Insurance – Contracted Provider	470,951.48	305,203.28		776,154.76
220 Social Security Contributions	198,366.37	195,942.37	3,001.42	397,310.16
230 PSERS Retirement Contributions	946,516.74	904,161.68	7,000.19	1,857,678.61
260 Workers' Compensation	22,453.26	21,153.07	357.35	43,963.68
270 Group Insurance – Self-Insurance	122,758.70	105,525.94		228,284.64
Total Personnel Services – Employee Benefits	\$1,761,046.55	\$1,531,986.34	\$10,358.96	\$3,303,391.85
300 Purchased Professional and Technical Services				
322 Professional Educational Services – lus	76,031.65	86,175.15	145,267.25	307,474.05
330 Other Professional Services	801,835.63	951,616.13	316,718.25	2,070,170.01
390 Other Purchased Professional and Technical Services	68,082.26	109,809.12		177,891.38
Total Purchased Professional and Technical Services	\$945,949.54	\$1,147,600.40	\$461,985.50	\$2,555,535.44
400 Purchased Property Services				
430 Repairs and Maintenance Services	71.92	3,821.80		3,893.72
Total Purchased Property Services	\$71.92	\$3,821.80		\$3,893.72
500 Other Purchased Services				
561 Tuition To Other School Districts Within the State		5,359.48		5,359.48
562 Tuition To Pennsylvania Charter Schools	43,521.27	58,698.38		102,219.65
563 Tuition To Nonpublic Schools	754,907.09	2,278,355.19		3,033,262.28
567 Tuition To Approved Private Schools (APS) and PA Chartered Schools for the Deaf and Blind	234,425.61	234,425.63		468,851.24
594 IU Payment By Withholding for Institutionalized Children's Programs – Special Classes		1,022.09		1,022.09
Total Other Purchased Services	\$1,032,853.97	\$2,577,860.77		\$3,610,714.74
600 Supplies				
610 General Supplies	25,456.42	19,933.11	10,364.91	55,754.44
630 Food	757.31	791.18		1,548.49
640 Books and Periodicals	13,638.03	11,663.07		25,301.10
Total Supplies	\$39,851.76	\$32,387.36	\$10,364.91	\$82,604.03
700 Property				
762 Capitalized Equipment - Replacement	287.97			287.97
Total Property	\$287.97			\$287.97
800 Other Objects				
810 Dues and Fees		350.00		350.00
Total Other Objects		\$350.00		\$350.00
Total 1200 Special Programs – Elementary / Secondary	\$6,504,486.65	\$7,916,953.69	\$522,415.44	\$14,943,855.78

General Fund (10)

1210 Life Skills Support

	<u>Elementary</u>	<u>Secondary</u>	<u>Federal</u>	<u>Total</u>
100 Personnel Services – Salaries				
100 Personnel Services – Salaries	119,834.07	37,161.60		156,995.67
Total Personnel Services – Salaries	\$119,834.07	\$37,161.60		\$156,995.67
200 Personnel Services – Employee Benefits				
210 Group Insurance – Contracted Provider	23,402.50	3,606.25		27,008.75
220 Social Security Contributions	9,040.58	2,817.22		11,857.80
230 PSERS Retirement Contributions	42,128.95	13,067.28		55,196.23
260 Workers' Compensation	900.46	283.24		1,183.70
270 Group Insurance – Self-Insurance	8,968.06	1,462.09		10,430.15
Total Personnel Services – Employee Benefits	\$84,440.55	\$21,236.08		\$105,676.63
300 Purchased Professional and Technical Services				
322 Professional Educational Services – lus		9,055.51		9,055.51
330 Other Professional Services		7,275.00	11,207.50	18,482.50
Total Purchased Professional and Technical Services		\$16,330.51	\$11,207.50	\$27,538.01
Total 1210 Life Skills Support	\$204,274.62	\$74,728.19	\$11,207.50	\$290,210.31

LEA : 125237603 Radnor Township SD

Printed 1/5/2024 11:51:57 AM

General Fund (10)

1220 Sensory Support

300 Purchased Professional and Technical Services

322 Professional Educational Services – Ius

330 Other Professional Services

Total Purchased Professional and Technical Services

Total 1220 Sensory Support

<u>Elementary</u>	<u>Secondary</u>	<u>Federal</u>	<u>Total</u>
17,025.84	17,595.13	121,624.40	156,245.37
244,312.90	238,091.87	136,613.72	619,018.49
\$261,338.74	\$255,687.00	\$258,238.12	\$775,263.86
\$261,338.74	\$255,687.00	\$258,238.12	\$775,263.86

General Fund (10)

1230 Emotional Support

	<u>Elementary</u>	<u>Secondary</u>	<u>Federal</u>	<u>Total</u>
100 Personnel Services – Salaries				
100 Personnel Services – Salaries	65,242.06	195,789.35		261,031.41
Total Personnel Services – Salaries	\$65,242.06	\$195,789.35		\$261,031.41
200 Personnel Services – Employee Benefits				
210 Group Insurance – Contracted Provider	7,550.82	22,891.68		30,442.50
220 Social Security Contributions	4,923.04	14,759.59		19,682.63
230 PSERS Retirement Contributions	21,987.47	66,994.54		88,982.01
260 Workers' Compensation	560.92	1,626.65		2,187.57
270 Group Insurance – Self-Insurance	3,136.12	9,588.41		12,724.53
Total Personnel Services – Employee Benefits	\$38,158.37	\$115,860.87		\$154,019.24
300 Purchased Professional and Technical Services				
322 Professional Educational Services – lus	18,148.37	41,273.51	13,086.85	72,508.73
330 Other Professional Services	302,479.40	285,138.35		587,617.75
Total Purchased Professional and Technical Services	\$320,627.77	\$326,411.86	\$13,086.85	\$660,126.48
500 Other Purchased Services				
563 Tuition To Nonpublic Schools	343,379.89	1,398,781.89		1,742,161.78
Total Other Purchased Services	\$343,379.89	\$1,398,781.89		\$1,742,161.78
600 Supplies				
610 General Supplies	984.86	14,194.00		15,178.86
Total Supplies	\$984.86	\$14,194.00		\$15,178.86
Total 1230 Emotional Support	\$768,392.95	\$2,051,037.97	\$13,086.85	\$2,832,517.77

General Fund (10)

1240 Academic Support

	<u>Elementary</u>	<u>Secondary</u>	<u>Federal</u>	<u>Total</u>
100 Personnel Services – Salaries				
100 Personnel Services – Salaries	2,539,348.81	2,389,996.07	39,706.07	4,969,050.95
Total Personnel Services – Salaries	\$2,539,348.81	\$2,389,996.07	\$39,706.07	\$4,969,050.95
200 Personnel Services – Employee Benefits				
210 Group Insurance – Contracted Provider	439,998.16	278,705.35		718,703.51
220 Social Security Contributions	184,402.75	178,365.56	3,001.42	365,769.73
230 PSERS Retirement Contributions	882,400.32	824,099.86	7,000.19	1,713,500.37
260 Workers' Compensation	20,991.88	19,243.18	357.35	40,592.41
270 Group Insurance – Self-Insurance	110,654.52	94,475.44		205,129.96
Total Personnel Services – Employee Benefits	\$1,638,447.63	\$1,394,889.39	\$10,358.96	\$3,043,695.98
300 Purchased Professional and Technical Services				
322 Professional Educational Services – lus		5,675.50	10,556.00	16,231.50
330 Other Professional Services	252,703.33	301,820.49	168,897.03	723,420.85
390 Other Purchased Professional and Technical Services	68,082.26	109,809.12		177,891.38
Total Purchased Professional and Technical Services	\$320,785.59	\$417,305.11	\$179,453.03	\$917,543.73
400 Purchased Property Services				
430 Repairs and Maintenance Services	71.92	3,821.80		3,893.72
Total Purchased Property Services	\$71.92	\$3,821.80		\$3,893.72
500 Other Purchased Services				
561 Tuition To Other School Districts Within the State		5,359.48		5,359.48
562 Tuition To Pennsylvania Charter Schools	43,521.27	58,698.38		102,219.65
563 Tuition To Nonpublic Schools	89,553.20	298,743.24		388,296.44
Total Other Purchased Services	\$133,074.47	\$362,801.10		\$495,875.57
600 Supplies				
610 General Supplies	24,471.56	5,739.11	10,364.91	40,575.58
630 Food	757.31	791.18		1,548.49
640 Books and Periodicals	13,638.03	11,663.07		25,301.10
Total Supplies	\$38,866.90	\$18,193.36	\$10,364.91	\$67,425.17
700 Property				
762 Capitalized Equipment - Replacement	287.97			287.97
Total Property	\$287.97			\$287.97
800 Other Objects				
810 Dues and Fees		350.00		350.00
Total Other Objects		\$350.00		\$350.00
Total 1240 Academic Support	\$4,670,883.29	\$4,587,356.83	\$239,882.97	\$9,498,123.09

General Fund (10)

	<u>Elementary</u>	<u>Secondary</u>	<u>Federal</u>	<u>Total</u>
1241 Learning Support – Public				
100 Personnel Services – Salaries				
100 Personnel Services – Salaries	2,269,787.38	1,856,563.34	39,706.07	4,166,056.79
Total Personnel Services – Salaries	\$2,269,787.38	\$1,856,563.34	\$39,706.07	\$4,166,056.79
200 Personnel Services – Employee Benefits				
210 Group Insurance – Contracted Provider	382,179.47	203,599.56		585,779.03
220 Social Security Contributions	164,380.56	139,007.08	3,001.42	306,389.06
230 PSERS Retirement Contributions	787,614.34	638,934.50	7,000.19	1,433,549.03
260 Workers' Compensation	18,938.79	15,172.93	357.35	34,469.07
270 Group Insurance – Self-Insurance	92,295.91	67,085.04		159,380.95
Total Personnel Services – Employee Benefits	\$1,445,409.07	\$1,063,799.11	\$10,358.96	\$2,519,567.14
300 Purchased Professional and Technical Services				
322 Professional Educational Services – lus		5,675.50	10,556.00	16,231.50
330 Other Professional Services	252,703.33	301,820.49	168,897.03	723,420.85
390 Other Purchased Professional and Technical Services	68,082.26	109,809.12		177,891.38
Total Purchased Professional and Technical Services	\$320,785.59	\$417,305.11	\$179,453.03	\$917,543.73
400 Purchased Property Services				
430 Repairs and Maintenance Services	71.92	3,821.80		3,893.72
Total Purchased Property Services	\$71.92	\$3,821.80		\$3,893.72
500 Other Purchased Services				
561 Tuition To Other School Districts Within the State		5,359.48		5,359.48
562 Tuition To Pennsylvania Charter Schools	43,521.27	58,698.38		102,219.65
563 Tuition To Nonpublic Schools	89,553.20	298,743.24		388,296.44
Total Other Purchased Services	\$133,074.47	\$362,801.10		\$495,875.57
600 Supplies				
610 General Supplies	23,583.91	5,565.81	10,364.91	39,514.63
630 Food	757.31	791.18		1,548.49
640 Books and Periodicals	13,251.78	11,434.82		24,686.60
Total Supplies	\$37,593.00	\$17,791.81	\$10,364.91	\$65,749.72
700 Property				
762 Capitalized Equipment - Replacement	287.97			287.97
Total Property	\$287.97			\$287.97
800 Other Objects				
810 Dues and Fees		350.00		350.00
Total Other Objects		\$350.00		\$350.00
Total 1241 Learning Support – Public	\$4,207,009.40	\$3,722,432.27	\$239,882.97	\$8,169,324.64

General Fund (10)

	<u>Elementary</u>	<u>Secondary</u>	<u>Federal</u>	<u>Total</u>
1243 Gifted Support				
100 Personnel Services – Salaries				
100 Personnel Services – Salaries	269,561.43	533,432.73		802,994.16
Total Personnel Services – Salaries	\$269,561.43	\$533,432.73		\$802,994.16
200 Personnel Services – Employee Benefits				
210 Group Insurance – Contracted Provider	57,818.69	75,105.79		132,924.48
220 Social Security Contributions	20,022.19	39,358.48		59,380.67
230 PSERS Retirement Contributions	94,785.98	185,165.36		279,951.34
260 Workers' Compensation	2,053.09	4,070.25		6,123.34
270 Group Insurance – Self-Insurance	18,358.61	27,390.40		45,749.01
Total Personnel Services – Employee Benefits	\$193,038.56	\$331,090.28		\$524,128.84
600 Supplies				
610 General Supplies	887.65	173.30		1,060.95
640 Books and Periodicals	386.25	228.25		614.50
Total Supplies	\$1,273.90	\$401.55		\$1,675.45
Total 1243 Gifted Support	\$463,873.89	\$864,924.56		\$1,328,798.45

General Fund (10)

1270 Multi-Handicapped Support

300 Purchased Professional and Technical Services

322 Professional Educational Services – Ius

330 Other Professional Services

Total Purchased Professional and Technical Services

500 Other Purchased Services

563 Tuition To Nonpublic Schools

Total Other Purchased Services

Total 1270 Multi-Handicapped Support

	<u>Elementary</u>	<u>Secondary</u>	<u>Federal</u>	<u>Total</u>
		12,575.50		12,575.50
	2,340.00	119,290.42		121,630.42
	\$2,340.00	\$131,865.92		\$134,205.92
	321,974.00	580,830.06		902,804.06
	\$321,974.00	\$580,830.06		\$902,804.06
	\$324,314.00	\$712,695.98		\$1,037,009.98

General Fund (10)

1280 Early Intervention Support

300 Purchased Professional and Technical Services

322 Professional Educational Services – lus

Total Purchased Professional and Technical Services

Total 1280 Early Intervention Support

Elementary

Secondary

Federal

Total

40,857.44

40,857.44

\$40,857.44

\$40,857.44

\$40,857.44

\$40,857.44

General Fund (10)

1290 Special Programs - Other Support

500 Other Purchased Services

	<u>Elementary</u>	<u>Secondary</u>	<u>Federal</u>	<u>Total</u>
567 Tuition To Approved Private Schools (APS) and PA Chartered Schools for the Deaf and Blind	234,425.61	234,425.63		468,851.24
594 IU Payment By Withholding for Institutionalized Children's Programs – Special Classes		1,022.09		1,022.09
Total Other Purchased Services	\$234,425.61	\$235,447.72		\$469,873.33
Total 1290 Special Programs - Other Support	\$234,425.61	\$235,447.72		\$469,873.33

General Fund (10)

1300 Vocational Education

Elementary

Secondary

Federal

Total

500 Other Purchased Services

564 Tuition To Career and Technology Centers

653,283.89

653,283.89

Total Other Purchased Services

\$653,283.89

\$653,283.89

Total 1300 Vocational Education

\$653,283.89

\$653,283.89

General Fund (10)

	<u>Elementary</u>	<u>Secondary</u>	<u>Federal</u>	<u>Total</u>
1400 Other Instructional Programs – Elementary / Secondary				
100 Personnel Services – Salaries				
100 Personnel Services – Salaries	89,685.00	712.50	72,000.00	162,397.50
Total Personnel Services – Salaries	\$89,685.00	\$712.50	\$72,000.00	\$162,397.50
200 Personnel Services – Employee Benefits				
220 Social Security Contributions	6,692.62	54.51	5,379.18	12,126.31
230 PSERS Retirement Contributions	31,622.87	251.23	12,693.86	44,567.96
250 Unemployment Compensation	93.06			93.06
260 Workers' Compensation	807.24	6.42		813.66
Total Personnel Services – Employee Benefits	\$39,215.79	\$312.16	\$18,073.04	\$57,600.99
300 Purchased Professional and Technical Services				
329 Professional Educational Services – Other			16,441.73	16,441.73
Total Purchased Professional and Technical Services			\$16,441.73	\$16,441.73
600 Supplies				
610 General Supplies			1,049.89	1,049.89
640 Books and Periodicals			8,747.70	8,747.70
Total Supplies			\$9,797.59	\$9,797.59
Total 1400 Other Instructional Programs – Elementary / Secondary	\$128,900.79	\$1,024.66	\$116,312.36	\$246,237.81

General Fund (10)

1420 Summer School

Elementary

Secondary

Federal

Total

300 Purchased Professional and Technical Services

329 Professional Educational Services – Other

16,441.73

16,441.73

Total Purchased Professional and Technical Services

\$16,441.73

\$16,441.73

600 Supplies

610 General Supplies

1,049.89

1,049.89

Total Supplies

\$1,049.89

\$1,049.89

Total 1420 Summer School

\$17,491.62

\$17,491.62

General Fund (10)

	<u>Elementary</u>	<u>Secondary</u>	<u>Federal</u>	<u>Total</u>
1430 Homebound Instruction				
100 Personnel Services – Salaries				
100 Personnel Services – Salaries	1,372.50	712.50		2,085.00
Total Personnel Services – Salaries	\$1,372.50	\$712.50		\$2,085.00
200 Personnel Services – Employee Benefits				
220 Social Security Contributions	104.74	54.51		159.25
230 PSERS Retirement Contributions	483.96	251.23		735.19
250 Unemployment Compensation	93.06			93.06
260 Workers' Compensation	12.36	6.42		18.78
Total Personnel Services – Employee Benefits	\$694.12	\$312.16		\$1,006.28
Total 1430 Homebound Instruction	\$2,066.62	\$1,024.66		\$3,091.28

General Fund (10)

	<u>Elementary</u>	<u>Secondary</u>	<u>Federal</u>	<u>Total</u>
1450 Instructional Programs Outside the Established School Day				
100 Personnel Services – Salaries				
100 Personnel Services – Salaries	88,312.50		72,000.00	160,312.50
Total Personnel Services – Salaries	\$88,312.50		\$72,000.00	\$160,312.50
200 Personnel Services – Employee Benefits				
220 Social Security Contributions	6,587.88		5,379.18	11,967.06
230 PSERS Retirement Contributions	31,138.91		12,693.86	43,832.77
260 Workers’ Compensation	794.88			794.88
Total Personnel Services – Employee Benefits	\$38,521.67		\$18,073.04	\$56,594.71
600 Supplies				
640 Books and Periodicals			8,747.70	8,747.70
Total Supplies			\$8,747.70	\$8,747.70
Total 1450 Instructional Programs Outside the Established School Day	\$126,834.17		\$98,820.74	\$225,654.91

General Fund (10)

1500 Nonpublic School Programs

Elementary

Secondary

Federal

Total

500 Other Purchased Services

599 Other Miscellaneous Purchased Services

44,623.67

44,623.67

Total Other Purchased Services

\$44,623.67

\$44,623.67

Total 1500 Nonpublic School Programs

\$44,623.67

\$44,623.67

General Fund (10)

1600 Adult Education Programs

Elementary

Secondary

Federal

Total

500 Other Purchased Services

566 Tuition To Institutions of Higher Education and Technical Institutes

1,228,186.00

Total Other Purchased Services

\$1,228,186.00

Total 1600 Adult Education Programs

\$1,228,186.00

General Fund (10)

1800 Pre-Kindergarten

100 Personnel Services – Salaries

	<u>Elementary</u>	<u>Secondary</u>	<u>Federal</u>	<u>Total</u>
100 Personnel Services – Salaries			45,533.73	45,533.73
Total Personnel Services – Salaries			\$45,533.73	\$45,533.73

200 Personnel Services – Employee Benefits

220 Social Security Contributions			2,823.09	2,823.09
230 PSERS Retirement Contributions			15,481.46	15,481.46
Total Personnel Services – Employee Benefits			\$18,304.55	\$18,304.55

600 Supplies

610 General Supplies			504.63	504.63
630 Food				41.64
Total Supplies			\$504.63	\$546.27
Total 1800 Pre-Kindergarten			\$64,342.91	\$64,384.55

General Fund (10)

1801 Pre-K Instruction

100 Personnel Services – Salaries

	<u>Elementary</u>	<u>Secondary</u>	<u>Federal</u>	<u>Total</u>
100 Personnel Services – Salaries			45,533.73	45,533.73
Total Personnel Services – Salaries			\$45,533.73	\$45,533.73

200 Personnel Services – Employee Benefits

220 Social Security Contributions			2,823.09	2,823.09
230 PSERS Retirement Contributions			15,481.46	15,481.46
Total Personnel Services – Employee Benefits			\$18,304.55	\$18,304.55

600 Supplies

610 General Supplies			504.63	504.63
630 Food				41.64
Total Supplies			\$504.63	\$546.27
Total 1801 Pre-K Instruction			\$64,342.91	\$64,384.55

General Fund (10)

2000 Support Services

Total

100 Personnel Services – Salaries

100 Personnel Services – Salaries 17,056,699.67

Total Personnel Services – Salaries \$17,056,699.67

200 Personnel Services – Employee Benefits

210 Group Insurance – Contracted Provider 2,795,247.41

220 Social Security Contributions 1,243,721.20

230 PSERS Retirement Contributions 5,869,595.18

240 Tuition Reimbursement 174,235.61

250 Unemployment Compensation 5,832.00

260 Workers' Compensation 147,951.48

270 Group Insurance – Self-Insurance 1,062,540.56

291 Other Retirement Plans 3,791.90

292 Health Savings Accounts 273,492.31

Total Personnel Services – Employee Benefits \$11,576,407.65

300 Purchased Professional and Technical Services

322 Professional Educational Services – Ius 4,361.40

329 Professional Educational Services – Other 99,575.80

330 Other Professional Services 1,643,242.04

340 Technical Services 306,417.30

360 Employee Training and Development Services 84,987.82

Total Purchased Professional and Technical Services \$2,138,584.36

400 Purchased Property Services

410 Cleaning Services 565,548.56

420 Utility Services 142,230.32

430 Repairs and Maintenance Services 743,918.49

440 Rentals 82,548.53

460 Extermination Services 10,691.64

490 Other Purchased Property Services 17,781.00

Total Purchased Property Services \$1,562,718.54

500 Other Purchased Services

513 Contracted Carriers 34,920.67

515 Public Carriers 120.00

520 Insurance – General 83,441.00

522 Automotive Liability Insurance 57,015.00

523 General Property and Liability Insurance 227,474.85

530 Communications 281,135.55

541 Advertising Related to Federal Grant Awards 4,907.30

550 Printing and Binding 9,884.34

580 Travel 52,254.16

595 IU Payments By Withholding 79,567.01

Total Other Purchased Services \$830,719.88

600 Supplies

610 General Supplies 1,211,938.63

620 Energy 949,024.02

LEA : 125237603 Radnor Township SD

Printed 1/5/2024 11:52:01 AM

General Fund (10)

2000 Support Services

Total

600 Supplies

630 Food	65,162.65
640 Books and Periodicals	88,675.58
650 Supplies & Fees – Technology Related	43,540.92

Total Supplies	\$2,358,341.80
-----------------------	-----------------------

700 Property

738 Technology Software Lease and Other Right-to-Use Arrangements	305,506.94
752 Capital Equipment – Original and Additional	65,252.18
756 Capitalized Technology Equipment – Original	51,035.02
762 Capitalized Equipment - Replacement	74,117.10
766 Capitalized Technology Equipment – Replacement	34,853.54

Total Property	\$530,764.78
-----------------------	---------------------

800 Other Objects

810 Dues and Fees	127,836.66
820 Claims and Judgments Against the LEA	34,948.47

Total Other Objects	\$162,785.13
----------------------------	---------------------

Total 2000 Support Services	\$36,217,021.81
------------------------------------	------------------------

General Fund (10)

	<u>Elementary</u>	<u>Secondary</u>	<u>Federal</u>	<u>Total</u>
2100 Support Services – Students				
100 Personnel Services – Salaries				
100 Personnel Services – Salaries	928,803.89	1,544,680.74	227,050.00	2,965,256.20
Total Personnel Services – Salaries	\$928,803.89	\$1,544,680.74	\$227,050.00	\$2,965,256.20
200 Personnel Services – Employee Benefits				
210 Group Insurance – Contracted Provider	123,469.93	162,217.97	33,473.20	347,858.33
220 Social Security Contributions	67,773.39	115,321.27	16,973.11	219,532.72
230 PSERS Retirement Contributions	331,983.13	549,584.29	39,567.32	1,030,981.09
260 Workers' Compensation	7,478.64	12,562.54	1,731.81	23,885.35
270 Group Insurance – Self-Insurance	46,679.15	59,325.40	13,752.38	130,069.46
292 Health Savings Accounts	10,855.11	10,854.84		23,201.72
Total Personnel Services – Employee Benefits	\$588,239.35	\$909,866.31	\$105,497.82	\$1,775,528.67
300 Purchased Professional and Technical Services				
330 Other Professional Services	42,589.97	52,576.32	333,630.76	432,970.00
Total Purchased Professional and Technical Services	\$42,589.97	\$52,576.32	\$333,630.76	\$432,970.00
500 Other Purchased Services				
580 Travel	881.16	961.39		3,279.05
Total Other Purchased Services	\$881.16	\$961.39		\$3,279.05
600 Supplies				
610 General Supplies	7,846.98	10,956.03		18,803.01
630 Food	1,010.78	1,670.19		2,680.97
640 Books and Periodicals	2,346.64	1,936.75		4,283.39
Total Supplies	\$11,204.40	\$14,562.97		\$25,767.37
700 Property				
762 Capitalized Equipment - Replacement		42.67		42.67
Total Property		\$42.67		\$42.67
800 Other Objects				
810 Dues and Fees	1,255.00	2,364.75		3,849.75
Total Other Objects	\$1,255.00	\$2,364.75		\$3,849.75
Total 2100 Support Services – Students	\$1,572,973.77	\$2,525,055.15	\$666,178.58	\$5,206,693.71

General Fund (10)

	<u>Elementary</u>	<u>Secondary</u>	<u>Federal</u>	<u>Total</u>
2110 Supervision of Student Services				
100 Personnel Services – Salaries				
100 Personnel Services – Salaries	332,821.84	332,821.57		665,643.41
Total Personnel Services – Salaries	\$332,821.84	\$332,821.57		\$665,643.41
200 Personnel Services – Employee Benefits				
210 Group Insurance – Contracted Provider	49,419.52	32,364.18		81,783.70
220 Social Security Contributions	24,138.19	24,136.37		48,274.56
230 PSERS Retirement Contributions	115,842.29	115,840.98		231,683.27
260 Workers' Compensation	2,995.73	2,995.12		5,990.85
270 Group Insurance – Self-Insurance	19,201.33	12,829.78		32,031.11
292 Health Savings Accounts	10,855.11	10,854.84		21,709.95
Total Personnel Services – Employee Benefits	\$222,452.17	\$199,021.27		\$421,473.44
300 Purchased Professional and Technical Services				
330 Other Professional Services	42,589.97	39,556.32	315,030.76	397,177.05
Total Purchased Professional and Technical Services	\$42,589.97	\$39,556.32	\$315,030.76	\$397,177.05
500 Other Purchased Services				
580 Travel	881.16	842.59		1,723.75
Total Other Purchased Services	\$881.16	\$842.59		\$1,723.75
600 Supplies				
610 General Supplies	1,140.20	1,448.80		2,589.00
630 Food	346.80	323.44		670.24
640 Books and Periodicals	2,156.53	1,936.75		4,093.28
Total Supplies	\$3,643.53	\$3,708.99		\$7,352.52
700 Property				
762 Capitalized Equipment - Replacement		42.67		42.67
Total Property		\$42.67		\$42.67
800 Other Objects				
810 Dues and Fees	1,255.00	1,507.75		2,762.75
Total Other Objects	\$1,255.00	\$1,507.75		\$2,762.75
Total 2110 Supervision of Student Services	\$603,643.67	\$577,501.16	\$315,030.76	\$1,496,175.59

General Fund (10)

	<u>Elementary</u>	<u>Secondary</u>	<u>Federal</u>	<u>Total</u>
2111 Supervision of Student Services – Head of Component				
100 Personnel Services – Salaries				
100 Personnel Services – Salaries	198,572.87	198,572.86		397,145.73
Total Personnel Services – Salaries	\$198,572.87	\$198,572.86		\$397,145.73
200 Personnel Services – Employee Benefits				
210 Group Insurance – Contracted Provider	40,931.53	23,876.19		64,807.72
220 Social Security Contributions	14,092.94	14,091.85		28,184.79
230 PSERS Retirement Contributions	69,513.44	69,512.39		139,025.83
260 Workers' Compensation	1,787.53	1,786.93		3,574.46
270 Group Insurance – Self-Insurance	15,529.35	9,157.80		24,687.15
292 Health Savings Accounts	4,285.43	4,285.42		8,570.85
Total Personnel Services – Employee Benefits	\$146,140.22	\$122,710.58		\$268,850.80
Total 2111 Supervision of Student Services – Head of Component	\$344,713.09	\$321,283.44		\$665,996.53

General Fund (10)

	<u>Elementary</u>	<u>Secondary</u>	<u>Federal</u>	<u>Total</u>
2119 Supervision of Student Services – All Other Supervision				
100 Personnel Services – Salaries				
100 Personnel Services – Salaries	134,248.97	134,248.71		268,497.68
Total Personnel Services – Salaries	\$134,248.97	\$134,248.71		\$268,497.68
200 Personnel Services – Employee Benefits				
210 Group Insurance – Contracted Provider	8,487.99	8,487.99		16,975.98
220 Social Security Contributions	10,045.25	10,044.52		20,089.77
230 PSERS Retirement Contributions	46,328.85	46,328.59		92,657.44
260 Workers' Compensation	1,208.20	1,208.19		2,416.39
270 Group Insurance – Self-Insurance	3,671.98	3,671.98		7,343.96
292 Health Savings Accounts	6,569.68	6,569.42		13,139.10
Total Personnel Services – Employee Benefits	\$76,311.95	\$76,310.69		\$152,622.64
300 Purchased Professional and Technical Services				
330 Other Professional Services	42,589.97	39,556.32	315,030.76	397,177.05
Total Purchased Professional and Technical Services	\$42,589.97	\$39,556.32	\$315,030.76	\$397,177.05
500 Other Purchased Services				
580 Travel	881.16	842.59		1,723.75
Total Other Purchased Services	\$881.16	\$842.59		\$1,723.75
600 Supplies				
610 General Supplies	1,140.20	1,448.80		2,589.00
630 Food	346.80	323.44		670.24
640 Books and Periodicals	2,156.53	1,936.75		4,093.28
Total Supplies	\$3,643.53	\$3,708.99		\$7,352.52
700 Property				
762 Capitalized Equipment - Replacement		42.67		42.67
Total Property		\$42.67		\$42.67
800 Other Objects				
810 Dues and Fees	1,255.00	1,507.75		2,762.75
Total Other Objects	\$1,255.00	\$1,507.75		\$2,762.75
Total 2119 Supervision of Student Services – All Other Supervision	\$258,930.58	\$256,217.72	\$315,030.76	\$830,179.06

General Fund (10)

	<u>Elementary</u>	<u>Secondary</u>	<u>Federal</u>	<u>Total</u>
2120 Guidance Services				
100 Personnel Services – Salaries				
100 Personnel Services – Salaries	319,051.66	801,034.83	116,225.00	1,236,311.49
Total Personnel Services – Salaries	\$319,051.66	\$801,034.83	\$116,225.00	\$1,236,311.49
200 Personnel Services – Employee Benefits				
210 Group Insurance – Contracted Provider	38,894.18	94,013.97	16,776.58	149,684.73
220 Social Security Contributions	23,139.13	60,458.80	8,693.34	92,291.27
230 PSERS Retirement Contributions	120,162.15	291,737.25	20,082.55	431,981.95
260 Workers' Compensation	2,357.50	6,416.45	887.88	9,661.83
270 Group Insurance – Self-Insurance	13,725.44	32,743.24	6,876.19	53,344.87
Total Personnel Services – Employee Benefits	\$198,278.40	\$485,369.71	\$53,316.54	\$736,964.65
300 Purchased Professional and Technical Services				
330 Other Professional Services			18,600.00	18,600.00
Total Purchased Professional and Technical Services			\$18,600.00	\$18,600.00
600 Supplies				
610 General Supplies	1,104.35	3,229.51		4,333.86
630 Food	663.98	1,346.75		2,010.73
640 Books and Periodicals	190.11			190.11
Total Supplies	\$1,958.44	\$4,576.26		\$6,534.70
800 Other Objects				
810 Dues and Fees		857.00		857.00
Total Other Objects		\$857.00		\$857.00
Total 2120 Guidance Services	\$519,288.50	\$1,291,837.80	\$188,141.54	\$1,999,267.84

General Fund (10)

	<u>Elementary</u>	<u>Secondary</u>	<u>Federal</u>	<u>Total</u>
2140 Psychological Services				
100 Personnel Services – Salaries				
100 Personnel Services – Salaries	276,930.39	410,824.34		687,754.73
Total Personnel Services – Salaries	\$276,930.39	\$410,824.34		\$687,754.73
200 Personnel Services – Employee Benefits				
210 Group Insurance – Contracted Provider	35,156.23	35,839.82		70,996.05
220 Social Security Contributions	20,496.07	30,726.10		51,222.17
230 PSERS Retirement Contributions	95,978.69	142,006.06		237,984.75
260 Workers' Compensation	2,125.41	3,150.97		5,276.38
270 Group Insurance – Self-Insurance	13,752.38	13,752.38		27,504.76
Total Personnel Services – Employee Benefits	\$167,508.78	\$225,475.33		\$392,984.11
300 Purchased Professional and Technical Services				
330 Other Professional Services		13,020.00		13,020.00
Total Purchased Professional and Technical Services		\$13,020.00		\$13,020.00
500 Other Purchased Services				
580 Travel		118.80		118.80
Total Other Purchased Services		\$118.80		\$118.80
600 Supplies				
610 General Supplies	5,602.43	6,277.72		11,880.15
Total Supplies	\$5,602.43	\$6,277.72		\$11,880.15
Total 2140 Psychological Services	\$450,041.60	\$655,716.19		\$1,105,757.79

General Fund (10)

2160 Social Work Services

100 Personnel Services – Salaries

	<u>Elementary</u>	<u>Secondary</u>	<u>Federal</u>	<u>Total</u>
100 Personnel Services – Salaries			110,825.00	310,855.00
Total Personnel Services – Salaries			\$110,825.00	\$310,855.00

200 Personnel Services – Employee Benefits

210 Group Insurance – Contracted Provider			16,696.62	35,555.06
220 Social Security Contributions			8,279.77	22,977.50
230 PSERS Retirement Contributions			19,484.77	107,548.05
260 Workers' Compensation			843.93	2,374.16
270 Group Insurance – Self-Insurance			6,876.19	13,752.38
Total Personnel Services – Employee Benefits			\$52,181.28	\$182,207.15

500 Other Purchased Services

580 Travel				1,277.48
Total Other Purchased Services				\$1,277.48

Total 2160 Social Work Services			\$163,006.28	\$494,339.63
--	--	--	---------------------	---------------------

General Fund (10)

	<u>Elementary</u>	<u>Secondary</u>	<u>Federal</u>	<u>Total</u>
2170 Student Accounting Services				
100 <u>Personnel Services – Salaries</u>				
100 Personnel Services – Salaries				64,691.57
Total Personnel Services – Salaries				\$64,691.57
200 <u>Personnel Services – Employee Benefits</u>				
210 Group Insurance – Contracted Provider				9,838.79
220 Social Security Contributions				4,767.22
230 PSERS Retirement Contributions				21,783.07
260 Workers' Compensation				582.13
270 Group Insurance – Self-Insurance				3,436.34
292 Health Savings Accounts				1,491.77
Total Personnel Services – Employee Benefits				\$41,899.32
300 <u>Purchased Professional and Technical Services</u>				
330 Other Professional Services				4,172.95
Total Purchased Professional and Technical Services				\$4,172.95
500 <u>Other Purchased Services</u>				
580 Travel				159.02
Total Other Purchased Services				\$159.02
800 <u>Other Objects</u>				
810 Dues and Fees				230.00
Total Other Objects				\$230.00
Total 2170 Student Accounting Services				\$111,152.86

General Fund (10)

	<u>Elementary</u>	<u>Secondary</u>	<u>Federal</u>	<u>Total</u>
2200 Support Services – Instructional Staff				
100 Personnel Services – Salaries				
100 Personnel Services – Salaries	1,554,561.21	861,219.57		2,415,780.78
Total Personnel Services – Salaries	\$1,554,561.21	\$861,219.57		\$2,415,780.78
200 Personnel Services – Employee Benefits				
210 Group Insurance – Contracted Provider	245,916.50	92,408.38		338,324.88
220 Social Security Contributions	112,899.21	62,349.87		175,249.08
230 PSERS Retirement Contributions	550,758.49	298,993.53		849,752.02
240 Tuition Reimbursement	70,256.92	62,500.01		132,756.93
260 Workers' Compensation	13,047.31	7,312.02		20,359.33
270 Group Insurance – Self-Insurance	101,879.89	36,028.19		137,908.08
292 Health Savings Accounts	19,471.19	12,320.96		31,792.15
Total Personnel Services – Employee Benefits	\$1,114,229.51	\$571,912.96		\$1,686,142.47
300 Purchased Professional and Technical Services				
322 Professional Educational Services – Ius			4,361.40	4,361.40
329 Professional Educational Services – Other	63,868.60	35,104.20		98,972.80
360 Employee Training and Development Services	10,821.40	21,274.71	36,792.41	68,888.52
Total Purchased Professional and Technical Services	\$74,690.00	\$56,378.91	\$41,153.81	\$172,222.72
400 Purchased Property Services				
430 Repairs and Maintenance Services	12,917.22	51,564.73		64,481.95
Total Purchased Property Services	\$12,917.22	\$51,564.73		\$64,481.95
500 Other Purchased Services				
580 Travel	8,956.92	8,282.56		17,239.48
Total Other Purchased Services	\$8,956.92	\$8,282.56		\$17,239.48
600 Supplies				
610 General Supplies	5,004.79	23,156.89		28,161.68
630 Food	8,894.81	6,908.95		15,803.76
640 Books and Periodicals	42,442.99	48,233.30	4,000.00	94,676.29
Total Supplies	\$56,342.59	\$78,299.14	\$4,000.00	\$138,641.73
800 Other Objects				
810 Dues and Fees	1,234.50	1,272.50		2,507.00
Total Other Objects	\$1,234.50	\$1,272.50		\$2,507.00
Total 2200 Support Services – Instructional Staff	\$2,822,931.95	\$1,628,930.37	\$45,153.81	\$4,497,016.13

General Fund (10)

	<u>Elementary</u>	<u>Secondary</u>	<u>Federal</u>	<u>Total</u>
2220 Technology Support Services				
100 Personnel Services – Salaries				
100 Personnel Services – Salaries	234,583.51	130,633.58		365,217.09
Total Personnel Services – Salaries	\$234,583.51	\$130,633.58		\$365,217.09
200 Personnel Services – Employee Benefits				
210 Group Insurance – Contracted Provider	47,097.70	25,442.80		72,540.50
220 Social Security Contributions	17,519.74	9,646.45		27,166.19
230 PSERS Retirement Contributions	81,744.41	45,591.42		127,335.83
260 Workers' Compensation	2,063.08	1,127.24		3,190.32
270 Group Insurance – Self-Insurance	19,256.46	10,214.70		29,471.16
292 Health Savings Accounts	7,000.00			7,000.00
Total Personnel Services – Employee Benefits	\$174,681.39	\$92,022.61		\$266,704.00
500 Other Purchased Services				
580 Travel	1,424.89	855.79		2,280.68
Total Other Purchased Services	\$1,424.89	\$855.79		\$2,280.68
600 Supplies				
610 General Supplies	99.99	100.00		199.99
630 Food	398.00	398.00		796.00
640 Books and Periodicals	44.94	41.67		86.61
Total Supplies	\$542.93	\$539.67		\$1,082.60
800 Other Objects				
810 Dues and Fees	350.00	450.00		800.00
Total Other Objects	\$350.00	\$450.00		\$800.00
Total 2220 Technology Support Services	\$411,582.72	\$224,501.65		\$636,084.37

General Fund (10)

	<u>Elementary</u>	<u>Secondary</u>	<u>Federal</u>	<u>Total</u>
2250 School Library Services				
100 Personnel Services – Salaries				
100 Personnel Services – Salaries	465,782.82	230,884.28		696,667.10
Total Personnel Services – Salaries	\$465,782.82	\$230,884.28		\$696,667.10
200 Personnel Services – Employee Benefits				
210 Group Insurance – Contracted Provider	110,864.44	30,957.84		141,822.28
220 Social Security Contributions	34,002.46	17,127.49		51,129.95
230 PSERS Retirement Contributions	172,173.93	79,795.95		251,969.88
260 Workers' Compensation	3,744.70	1,850.30		5,595.00
270 Group Insurance – Self-Insurance	46,443.41	11,483.22		57,926.63
Total Personnel Services – Employee Benefits	\$367,228.94	\$141,214.80		\$508,443.74
400 Purchased Property Services				
430 Repairs and Maintenance Services	2,342.16	40,402.63		42,744.79
Total Purchased Property Services	\$2,342.16	\$40,402.63		\$42,744.79
600 Supplies				
610 General Supplies	3,213.61	22,117.95		25,331.56
640 Books and Periodicals	40,801.21	46,771.53	4,000.00	91,572.74
Total Supplies	\$44,014.82	\$68,889.48	\$4,000.00	\$116,904.30
800 Other Objects				
810 Dues and Fees		60.00		60.00
Total Other Objects		\$60.00		\$60.00
Total 2250 School Library Services	\$879,368.74	\$481,451.19	\$4,000.00	\$1,364,819.93

General Fund (10)

2260 Instruction and Curriculum Development Services

	<u>Elementary</u>	<u>Secondary</u>	<u>Federal</u>	<u>Total</u>
100 Personnel Services – Salaries				
100 Personnel Services – Salaries	312,037.40	309,705.56		621,742.96
Total Personnel Services – Salaries	\$312,037.40	\$309,705.56		\$621,742.96
200 Personnel Services – Employee Benefits				
210 Group Insurance – Contracted Provider	18,119.26	35,095.18		53,214.44
220 Social Security Contributions	21,403.56	21,414.51		42,818.07
230 PSERS Retirement Contributions	107,209.95	107,209.64		214,419.59
260 Workers' Compensation	2,808.38	2,787.34		5,595.72
270 Group Insurance – Self-Insurance	8,045.51	14,330.27		22,375.78
292 Health Savings Accounts	12,471.19	12,320.96		24,792.15
Total Personnel Services – Employee Benefits	\$170,057.85	\$193,157.90		\$363,215.75
500 Other Purchased Services				
580 Travel	1,329.26	2,673.48		4,002.74
Total Other Purchased Services	\$1,329.26	\$2,673.48		\$4,002.74
600 Supplies				
610 General Supplies	231.01	211.02		442.03
630 Food	693.51			693.51
Total Supplies	\$924.52	\$211.02		\$1,135.54
800 Other Objects				
810 Dues and Fees	137.50	(62.50)		75.00
Total Other Objects	\$137.50	(\$62.50)		\$75.00
Total 2260 Instruction and Curriculum Development Services	\$484,486.53	\$505,685.46		\$990,171.99

General Fund (10)

2270 Instructional Staff Professional Development Services	<u>Elementary</u>	<u>Secondary</u>	<u>Federal</u>	<u>Total</u>
100 Personnel Services – Salaries				
100 Personnel Services – Salaries	489,210.05	117,279.64		606,489.69
Total Personnel Services – Salaries	\$489,210.05	\$117,279.64		\$606,489.69
200 Personnel Services – Employee Benefits				
210 Group Insurance – Contracted Provider	69,835.10	912.56		70,747.66
220 Social Security Contributions	36,022.09	8,730.24		44,752.33
230 PSERS Retirement Contributions	170,989.86	40,801.21		211,791.07
240 Tuition Reimbursement	70,256.92	62,500.01		132,756.93
260 Workers' Compensation	3,994.13	952.61		4,946.74
270 Group Insurance – Self-Insurance	28,134.51			28,134.51
Total Personnel Services – Employee Benefits	\$379,232.61	\$113,896.63		\$493,129.24
300 Purchased Professional and Technical Services				
322 Professional Educational Services – lus			4,361.40	4,361.40
329 Professional Educational Services – Other	63,868.60	35,104.20		98,972.80
360 Employee Training and Development Services	10,821.40	21,274.71	36,792.41	68,888.52
Total Purchased Professional and Technical Services	\$74,690.00	\$56,378.91	\$41,153.81	\$172,222.72
400 Purchased Property Services				
430 Repairs and Maintenance Services	10,575.06	11,162.10		21,737.16
Total Purchased Property Services	\$10,575.06	\$11,162.10		\$21,737.16
500 Other Purchased Services				
580 Travel	6,202.77	4,753.29		10,956.06
Total Other Purchased Services	\$6,202.77	\$4,753.29		\$10,956.06
600 Supplies				
610 General Supplies	1,460.18	727.92		2,188.10
630 Food	7,803.30	6,510.95		14,314.25
640 Books and Periodicals	1,596.84	1,420.10		3,016.94
Total Supplies	\$10,860.32	\$8,658.97		\$19,519.29
800 Other Objects				
810 Dues and Fees	747.00	825.00		1,572.00
Total Other Objects	\$747.00	\$825.00		\$1,572.00
Total 2270 Instructional Staff Professional Development Services	\$971,517.81	\$312,954.54	\$41,153.81	\$1,325,626.16

General Fund (10)

	<u>Elementary</u>	<u>Secondary</u>	<u>Federal</u>	<u>Total</u>
2290 Other Instructional Staff Services				
100 Personnel Services – Salaries				
100 Personnel Services – Salaries	52,947.43	72,716.51		125,663.94
Total Personnel Services – Salaries	\$52,947.43	\$72,716.51		\$125,663.94
200 Personnel Services – Employee Benefits				
220 Social Security Contributions	3,951.36	5,431.18		9,382.54
230 PSERS Retirement Contributions	18,640.34	25,595.31		44,235.65
260 Workers’ Compensation	437.02	594.53		1,031.55
Total Personnel Services – Employee Benefits	\$23,028.72	\$31,621.02		\$54,649.74
Total 2290 Other Instructional Staff Services	\$75,976.15	\$104,337.53		\$180,313.68

General Fund (10)

2300 Support Services – Administration

100 Personnel Services – Salaries

	<u>Elementary</u>	<u>Secondary</u>	<u>Federal</u>	<u>Total</u>
100 Personnel Services – Salaries	1,059,889.27	1,133,310.32	125,240.34	3,500,321.23
Total Personnel Services – Salaries	\$1,059,889.27	\$1,133,310.32	\$125,240.34	\$3,500,321.23

200 Personnel Services – Employee Benefits

210 Group Insurance – Contracted Provider	124,923.93	147,754.11	16,121.06	422,372.88
220 Social Security Contributions	78,575.24	84,853.50	9,427.18	244,578.81
230 PSERS Retirement Contributions	383,315.95	389,664.27	19,436.25	1,173,326.18
260 Workers' Compensation	9,538.96	10,205.67	1,127.19	31,043.18
270 Group Insurance – Self-Insurance	47,135.23	58,642.39	6,876.19	162,560.58
291 Other Retirement Plans				3,791.90
292 Health Savings Accounts	29,717.14	39,147.33	6,025.85	99,803.83
Total Personnel Services – Employee Benefits	\$673,206.45	\$730,267.27	\$59,013.72	\$2,137,477.36

300 Purchased Professional and Technical Services

329 Professional Educational Services – Other	198.99	404.01		603.00
330 Other Professional Services		9,826.63		414,251.73
340 Technical Services				2,500.00
Total Purchased Professional and Technical Services	\$198.99	\$10,230.64		\$417,354.73

400 Purchased Property Services

430 Repairs and Maintenance Services				50,757.32
440 Rentals	34,723.60	34,723.56		69,447.16
Total Purchased Property Services	\$34,723.60	\$34,723.56		\$120,204.48

500 Other Purchased Services

520 Insurance – General				12,133.50
530 Communications				3,466.90
541 Advertising Related to Federal Grant Awards				4,402.74
550 Printing and Binding		7,180.57		9,884.34
580 Travel	185.17	10.48		12,368.56
Total Other Purchased Services	\$185.17	\$7,191.05		\$42,256.04

600 Supplies

610 General Supplies	4,392.19	12,172.90		40,757.99
630 Food	1,140.33	18,387.92		43,236.44
640 Books and Periodicals	407.36	410.07		5,992.40
Total Supplies	\$5,939.88	\$30,970.89		\$89,986.83

700 Property

752 Capital Equipment – Original and Additional				18,593.73
762 Capitalized Equipment - Replacement				6,402.44
Total Property				\$24,996.17

800 Other Objects

810 Dues and Fees	3,234.30	3,716.92		59,424.90
820 Claims and Judgments Against the LEA				34,948.47
Total Other Objects	\$3,234.30	\$3,716.92		\$94,373.37

Total 2300 Support Services – Administration

	\$1,777,377.66	\$1,950,410.65	\$184,254.06	\$6,426,970.21
--	-----------------------	-----------------------	---------------------	-----------------------

General Fund (10)

	<u>Elementary</u>	<u>Secondary</u>	<u>Federal</u>	<u>Total</u>
2310 Board Services				
100 Personnel Services – Salaries				
100 Personnel Services – Salaries				8,641.76
Total Personnel Services – Salaries				\$8,641.76
200 Personnel Services – Employee Benefits				
220 Social Security Contributions				636.78
230 PSERS Retirement Contributions				3,047.08
260 Workers' Compensation				77.76
Total Personnel Services – Employee Benefits				\$3,761.62
300 Purchased Professional and Technical Services				
330 Other Professional Services				12,400.00
Total Purchased Professional and Technical Services				\$12,400.00
500 Other Purchased Services				
520 Insurance – General				10,203.50
541 Advertising Related to Federal Grant Awards				1,914.08
Total Other Purchased Services				\$12,117.58
600 Supplies				
610 General Supplies				6,242.72
630 Food				15,924.35
640 Books and Periodicals				312.00
Total Supplies				\$22,479.07
800 Other Objects				
810 Dues and Fees				25,358.04
820 Claims and Judgments Against the LEA				34,948.47
Total Other Objects				\$60,306.51
Total 2310 Board Services				\$119,706.54

General Fund (10)

2320 Board Treasurer Services

Elementary

Secondary

Federal

Total

500 Other Purchased Services

520 Insurance – General

1,930.00

Total Other Purchased Services

\$1,930.00

Total 2320 Board Treasurer Services

\$1,930.00

General Fund (10)

	<u>Elementary</u>	<u>Secondary</u>	<u>Federal</u>	<u>Total</u>
2330 Tax Assessment and Collection Services				
100 <u>Personnel Services – Salaries</u>				
100 Personnel Services – Salaries				40,190.77
Total Personnel Services – Salaries				\$40,190.77
200 <u>Personnel Services – Employee Benefits</u>				
210 Group Insurance – Contracted Provider				9,052.09
220 Social Security Contributions				2,886.08
230 PSERS Retirement Contributions				14,013.54
260 Workers' Compensation				361.76
270 Group Insurance – Self-Insurance				3,438.10
292 Health Savings Accounts				452.81
Total Personnel Services – Employee Benefits				\$30,204.38
300 <u>Purchased Professional and Technical Services</u>				
330 Other Professional Services				1,560.00
Total Purchased Professional and Technical Services				\$1,560.00
500 <u>Other Purchased Services</u>				
530 Communications				3,466.90
Total Other Purchased Services				\$3,466.90
Total 2330 Tax Assessment and Collection Services				\$75,422.05

General Fund (10)

2340 Staff Relations and Negotiations Services

Elementary Secondary Federal Total

100	<u>Personnel Services – Salaries</u>			
	100 Personnel Services – Salaries			527,809.78
Total Personnel Services – Salaries				\$527,809.78
200	<u>Personnel Services – Employee Benefits</u>			
	210 Group Insurance – Contracted Provider			80,132.30
	220 Social Security Contributions			34,641.84
	230 PSERS Retirement Contributions			174,843.77
	260 Workers' Compensation			4,677.79
	270 Group Insurance – Self-Insurance			29,792.12
	291 Other Retirement Plans			3,791.90
	292 Health Savings Accounts			(453.54)
Total Personnel Services – Employee Benefits				\$327,426.18
300	<u>Purchased Professional and Technical Services</u>			
	330 Other Professional Services			37,203.47
Total Purchased Professional and Technical Services				\$37,203.47
400	<u>Purchased Property Services</u>			
	430 Repairs and Maintenance Services			31,032.32
Total Purchased Property Services				\$31,032.32
500	<u>Other Purchased Services</u>			
	541 Advertising Related to Federal Grant Awards			1,470.00
	550 Printing and Binding			311.98
	580 Travel			7,758.24
Total Other Purchased Services				\$9,540.22
600	<u>Supplies</u>			
	610 General Supplies			8,004.82
	630 Food			4,104.93
	640 Books and Periodicals			88.00
Total Supplies				\$12,197.75
700	<u>Property</u>			
	752 Capital Equipment – Original and Additional			348.96
Total Property				\$348.96
800	<u>Other Objects</u>			
	810 Dues and Fees			7,037.02
Total Other Objects				\$7,037.02
Total 2340 Staff Relations and Negotiations Services				\$952,595.70

General Fund (10)

2350 Legal and Accounting Services

Elementary

Secondary

Federal

Total

300 Purchased Professional and Technical Services

330 Other Professional Services

345,526.33

Total Purchased Professional and Technical Services

\$345,526.33

Total 2350 Legal and Accounting Services

\$345,526.33

General Fund (10)

2360 Office of the Superintendent / Executive Director Services	<u>Elementary</u>	<u>Secondary</u>	<u>Federal</u>	<u>Total</u>
100 Personnel Services – Salaries				
100 Personnel Services – Salaries				451,940.55
Total Personnel Services – Salaries				\$451,940.55
200 Personnel Services – Employee Benefits				
210 Group Insurance – Contracted Provider				29,146.26
220 Social Security Contributions				21,909.95
230 PSERS Retirement Contributions				141,545.98
260 Workers' Compensation				3,674.37
270 Group Insurance – Self-Insurance				9,800.36
292 Health Savings Accounts				23,656.80
Total Personnel Services – Employee Benefits				\$229,733.72
300 Purchased Professional and Technical Services				
330 Other Professional Services				4,006.80
Total Purchased Professional and Technical Services				\$4,006.80
500 Other Purchased Services				
580 Travel				2,568.24
Total Other Purchased Services				\$2,568.24
600 Supplies				
610 General Supplies				4,609.22
630 Food				2,943.54
640 Books and Periodicals				4,274.99
Total Supplies				\$11,827.75
800 Other Objects				
810 Dues and Fees				10,146.62
Total Other Objects				\$10,146.62
Total 2360 Office of the Superintendent / Executive Director Services				\$710,223.68

General Fund (10)

	<u>Elementary</u>	<u>Secondary</u>	<u>Federal</u>	<u>Total</u>
2370 Community Relations Services				
100 Personnel Services – Salaries				
100 Personnel Services – Salaries				147,920.94
Total Personnel Services – Salaries				\$147,920.94
200 Personnel Services – Employee Benefits				
210 Group Insurance – Contracted Provider				14,493.13
220 Social Security Contributions				11,241.25
230 PSERS Retirement Contributions				45,563.24
260 Workers' Compensation				1,331.29
270 Group Insurance – Self-Insurance				6,876.19
292 Health Savings Accounts				1,257.44
Total Personnel Services – Employee Benefits				\$80,762.54
300 Purchased Professional and Technical Services				
330 Other Professional Services				3,728.50
340 Technical Services				2,500.00
Total Purchased Professional and Technical Services				\$6,228.50
400 Purchased Property Services				
430 Repairs and Maintenance Services				19,725.00
Total Purchased Property Services				\$19,725.00
500 Other Purchased Services				
541 Advertising Related to Federal Grant Awards				1,018.66
550 Printing and Binding				2,391.79
580 Travel				1,846.43
Total Other Purchased Services				\$5,256.88
600 Supplies				
610 General Supplies				5,336.14
630 Food				735.37
640 Books and Periodicals				499.98
Total Supplies				\$6,571.49
700 Property				
752 Capital Equipment – Original and Additional				18,244.77
762 Capitalized Equipment - Replacement				6,402.44
Total Property				\$24,647.21
800 Other Objects				
810 Dues and Fees				382.00
Total Other Objects				\$382.00
Total 2370 Community Relations Services				\$291,494.56

General Fund (10)

	<u>Elementary</u>	<u>Secondary</u>	<u>Federal</u>	<u>Total</u>
2380 Office of the Principal Services				
100 Personnel Services – Salaries				
100 Personnel Services – Salaries	1,059,889.27	1,133,310.32	125,240.34	2,318,439.93
Total Personnel Services – Salaries	\$1,059,889.27	\$1,133,310.32	\$125,240.34	\$2,318,439.93
200 Personnel Services – Employee Benefits				
210 Group Insurance – Contracted Provider	124,923.93	147,754.11	16,121.06	288,799.10
220 Social Security Contributions	78,575.24	84,853.50	9,427.18	172,855.92
230 PSERS Retirement Contributions	383,315.95	389,664.27	19,436.25	792,416.47
260 Workers' Compensation	9,538.96	10,205.67	1,127.19	20,871.82
270 Group Insurance – Self-Insurance	47,135.23	58,642.39	6,876.19	112,653.81
292 Health Savings Accounts	29,717.14	39,147.33	6,025.85	74,890.32
Total Personnel Services – Employee Benefits	\$673,206.45	\$730,267.27	\$59,013.72	\$1,462,487.44
300 Purchased Professional and Technical Services				
329 Professional Educational Services – Other	198.99	404.01		603.00
330 Other Professional Services		9,826.63		9,826.63
Total Purchased Professional and Technical Services	\$198.99	\$10,230.64		\$10,429.63
400 Purchased Property Services				
440 Rentals	34,723.60	34,723.56		69,447.16
Total Purchased Property Services	\$34,723.60	\$34,723.56		\$69,447.16
500 Other Purchased Services				
550 Printing and Binding		7,180.57		7,180.57
580 Travel	185.17	10.48		195.65
Total Other Purchased Services	\$185.17	\$7,191.05		\$7,376.22
600 Supplies				
610 General Supplies	4,392.19	12,172.90		16,565.09
630 Food	1,140.33	18,387.92		19,528.25
640 Books and Periodicals	407.36	410.07		817.43
Total Supplies	\$5,939.88	\$30,970.89		\$36,910.77
800 Other Objects				
810 Dues and Fees	3,234.30	3,716.92		6,951.22
Total Other Objects	\$3,234.30	\$3,716.92		\$6,951.22
Total 2380 Office of the Principal Services	\$1,777,377.66	\$1,950,410.65	\$184,254.06	\$3,912,042.37

General Fund (10)

	<u>Elementary</u>	<u>Secondary</u>	<u>Federal</u>	<u>Total</u>
2390 Other Administration Services				
100 Personnel Services – Salaries				
100 Personnel Services – Salaries				5,377.50
Total Personnel Services – Salaries				\$5,377.50
200 Personnel Services – Employee Benefits				
210 Group Insurance – Contracted Provider				750.00
220 Social Security Contributions				406.99
230 PSERS Retirement Contributions				1,896.10
260 Workers' Compensation				48.39
Total Personnel Services – Employee Benefits				\$3,101.48
800 Other Objects				
810 Dues and Fees				9,550.00
Total Other Objects				\$9,550.00
Total 2390 Other Administration Services				\$18,028.98

General Fund (10)

	<u>Elementary</u>	<u>Secondary</u>	<u>Federal</u>	<u>Total</u>
2400 Support Services – Pupil Health				
100 Personnel Services – Salaries				
100 Personnel Services – Salaries				632,087.36
Total Personnel Services – Salaries				\$632,087.36
200 Personnel Services – Employee Benefits				
210 Group Insurance – Contracted Provider				121,631.12
220 Social Security Contributions				46,917.48
230 PSERS Retirement Contributions				216,249.29
260 Workers' Compensation				5,186.90
270 Group Insurance – Self-Insurance				46,468.67
Total Personnel Services – Employee Benefits				\$436,453.46
300 Purchased Professional and Technical Services				
330 Other Professional Services				284,214.31
Total Purchased Professional and Technical Services				\$284,214.31
400 Purchased Property Services				
430 Repairs and Maintenance Services				1,449.90
Total Purchased Property Services				\$1,449.90
500 Other Purchased Services				
530 Communications				253.24
580 Travel				5,592.71
Total Other Purchased Services				\$5,845.95
600 Supplies				
610 General Supplies				9,576.51
630 Food				281.18
Total Supplies				\$9,857.69
700 Property				
752 Capital Equipment – Original and Additional				7,516.47
Total Property				\$7,516.47
Total 2400 Support Services – Pupil Health				\$1,377,425.14

General Fund (10)

2420 Medical Services

Elementary

Secondary

Federal

Total

300 Purchased Professional and Technical Services

330 Other Professional Services

6,500.00

Total Purchased Professional and Technical Services

\$6,500.00

Total 2420 Medical Services

\$6,500.00

General Fund (10)

2440 Nursing Services

Elementary Secondary Federal Total

100	<u>Personnel Services – Salaries</u>				
	100 Personnel Services – Salaries				632,087.36
Total Personnel Services – Salaries					\$632,087.36
200	<u>Personnel Services – Employee Benefits</u>				
	210 Group Insurance – Contracted Provider				121,631.12
	220 Social Security Contributions				46,917.48
	230 PSERS Retirement Contributions				216,249.29
	260 Workers' Compensation				5,186.90
	270 Group Insurance – Self-Insurance				46,468.67
Total Personnel Services – Employee Benefits					\$436,453.46
300	<u>Purchased Professional and Technical Services</u>				
	330 Other Professional Services				277,714.31
Total Purchased Professional and Technical Services					\$277,714.31
400	<u>Purchased Property Services</u>				
	430 Repairs and Maintenance Services				1,449.90
Total Purchased Property Services					\$1,449.90
500	<u>Other Purchased Services</u>				
	530 Communications				253.24
	580 Travel				5,592.71
Total Other Purchased Services					\$5,845.95
600	<u>Supplies</u>				
	610 General Supplies				9,576.51
	630 Food				281.18
Total Supplies					\$9,857.69
700	<u>Property</u>				
	752 Capital Equipment – Original and Additional				7,516.47
Total Property					\$7,516.47
Total 2440 Nursing Services					\$1,370,925.14

General Fund (10)

	<u>Elementary</u>	<u>Secondary</u>	<u>Federal</u>	<u>Total</u>
2500 Support Services – Business				
100 Personnel Services – Salaries				
100 Personnel Services – Salaries				567,939.17
Total Personnel Services – Salaries				\$567,939.17
200 Personnel Services – Employee Benefits				
210 Group Insurance – Contracted Provider				144,749.84
220 Social Security Contributions				40,498.22
230 PSERS Retirement Contributions				193,302.86
260 Workers' Compensation				5,111.68
270 Group Insurance – Self-Insurance				30,927.40
292 Health Savings Accounts				26,196.08
Total Personnel Services – Employee Benefits				\$440,786.08
300 Purchased Professional and Technical Services				
330 Other Professional Services				28,746.19
Total Purchased Professional and Technical Services				\$28,746.19
400 Purchased Property Services				
440 Rentals				260.48
Total Purchased Property Services				\$260.48
500 Other Purchased Services				
520 Insurance – General				71,307.50
530 Communications				19,535.56
541 Advertising Related to Federal Grant Awards				504.56
580 Travel				5,136.43
Total Other Purchased Services				\$96,484.05
600 Supplies				
610 General Supplies				192,650.24
630 Food				560.18
640 Books and Periodicals				(16,276.50)
650 Supplies & Fees – Technology Related				2,694.33
Total Supplies				\$179,628.25
800 Other Objects				
810 Dues and Fees				5,290.09
Total Other Objects				\$5,290.09
Total 2500 Support Services – Business				\$1,319,134.31

General Fund (10)

2510 Fiscal Services

Elementary Secondary Federal Total

100	<u>Personnel Services – Salaries</u>			
	100 Personnel Services – Salaries			567,939.17
Total Personnel Services – Salaries				\$567,939.17
200	<u>Personnel Services – Employee Benefits</u>			
	210 Group Insurance – Contracted Provider			144,749.84
	220 Social Security Contributions			40,498.22
	230 PSERS Retirement Contributions			193,302.86
	260 Workers' Compensation			5,111.68
	270 Group Insurance – Self-Insurance			30,927.40
	292 Health Savings Accounts			26,196.08
Total Personnel Services – Employee Benefits				\$440,786.08
300	<u>Purchased Professional and Technical Services</u>			
	330 Other Professional Services			28,746.19
Total Purchased Professional and Technical Services				\$28,746.19
400	<u>Purchased Property Services</u>			
	440 Rentals			260.48
Total Purchased Property Services				\$260.48
500	<u>Other Purchased Services</u>			
	520 Insurance – General			71,307.50
	530 Communications			19,535.56
	541 Advertising Related to Federal Grant Awards			504.56
	580 Travel			5,136.43
Total Other Purchased Services				\$96,484.05
600	<u>Supplies</u>			
	610 General Supplies			192,650.24
	630 Food			560.18
	640 Books and Periodicals			(16,276.50)
	650 Supplies & Fees – Technology Related			2,694.33
Total Supplies				\$179,628.25
800	<u>Other Objects</u>			
	810 Dues and Fees			5,290.09
Total Other Objects				\$5,290.09
Total 2510 Fiscal Services				\$1,319,134.31

General Fund (10)

2511 Supervision of Fiscal Services - Head of Component

Elementary

Secondary

Federal

Total

100 Personnel Services – Salaries

100 Personnel Services – Salaries

299,140.04

Total Personnel Services – Salaries

\$299,140.04

200 Personnel Services – Employee Benefits

210 Group Insurance – Contracted Provider

115,290.19

220 Social Security Contributions

20,148.73

230 PSERS Retirement Contributions

105,049.64

260 Workers' Compensation

2,692.51

270 Group Insurance – Self-Insurance

17,190.46

292 Health Savings Accounts

20,257.39

Total Personnel Services – Employee Benefits

\$280,628.92

Total 2511 Supervision of Fiscal Services - Head of Component

\$579,768.96

General Fund (10)

2514 Payroll Services

	<u>Elementary</u>	<u>Secondary</u>	<u>Federal</u>	<u>Total</u>
100 Personnel Services – Salaries				
100 Personnel Services – Salaries				59,114.88
Total Personnel Services – Salaries				\$59,114.88
200 Personnel Services – Employee Benefits				
210 Group Insurance – Contracted Provider				6,663.05
220 Social Security Contributions				4,477.20
230 PSERS Retirement Contributions				20,726.07
260 Workers' Compensation				532.04
270 Group Insurance – Self-Insurance				2,924.17
Total Personnel Services – Employee Benefits				\$35,322.53
Total 2514 Payroll Services				\$94,437.41

General Fund (10)

2515 Financial Accounting Services

Elementary

Secondary

Federal

Total

100 Personnel Services – Salaries

100 Personnel Services – Salaries

141,535.29

Total Personnel Services – Salaries

\$141,535.29

200 Personnel Services – Employee Benefits

210 Group Insurance – Contracted Provider

16,071.03

220 Social Security Contributions

10,719.80

230 PSERS Retirement Contributions

43,498.00

260 Workers' Compensation

1,273.89

270 Group Insurance – Self-Insurance

4,581.78

292 Health Savings Accounts

5,938.69

Total Personnel Services – Employee Benefits

\$82,083.19

Total 2515 Financial Accounting Services

\$223,618.48

General Fund (10)

2519 Other Fiscal Services

Elementary Secondary Federal Total

100	<u>Personnel Services – Salaries</u>			
	100 Personnel Services – Salaries			68,148.96
Total Personnel Services – Salaries				\$68,148.96
200	<u>Personnel Services – Employee Benefits</u>			
	210 Group Insurance – Contracted Provider			6,725.57
	220 Social Security Contributions			5,152.49
	230 PSERS Retirement Contributions			24,029.15
	260 Workers' Compensation			613.24
	270 Group Insurance – Self-Insurance			6,230.99
Total Personnel Services – Employee Benefits				\$42,751.44
300	<u>Purchased Professional and Technical Services</u>			
	330 Other Professional Services			28,746.19
Total Purchased Professional and Technical Services				\$28,746.19
400	<u>Purchased Property Services</u>			
	440 Rentals			260.48
Total Purchased Property Services				\$260.48
500	<u>Other Purchased Services</u>			
	520 Insurance – General			71,307.50
	530 Communications			19,535.56
	541 Advertising Related to Federal Grant Awards			504.56
	580 Travel			5,136.43
Total Other Purchased Services				\$96,484.05
600	<u>Supplies</u>			
	610 General Supplies			192,650.24
	630 Food			560.18
	640 Books and Periodicals			(16,276.50)
	650 Supplies & Fees – Technology Related			2,694.33
Total Supplies				\$179,628.25
800	<u>Other Objects</u>			
	810 Dues and Fees			5,290.09
Total Other Objects				\$5,290.09
Total 2519 Other Fiscal Services				\$421,309.46

General Fund (10)

	<u>Elementary</u>	<u>Secondary</u>	<u>Federal</u>	<u>Total</u>
2600 Operation and Maintenance of Plant Services				
100 Personnel Services – Salaries				
100 Personnel Services – Salaries				3,591,238.03
Total Personnel Services – Salaries				\$3,591,238.03
200 Personnel Services – Employee Benefits				
210 Group Insurance – Contracted Provider				626,072.76
220 Social Security Contributions				268,294.89
230 PSERS Retirement Contributions				1,226,964.67
250 Unemployment Compensation				5,832.00
260 Workers' Compensation				31,912.85
270 Group Insurance – Self-Insurance				256,704.32
292 Health Savings Accounts				49,423.47
Total Personnel Services – Employee Benefits				\$2,465,204.96
300 Purchased Professional and Technical Services				
330 Other Professional Services				349,617.73
Total Purchased Professional and Technical Services				\$349,617.73
400 Purchased Property Services				
410 Cleaning Services				563,766.64
420 Utility Services				142,230.32
430 Repairs and Maintenance Services				551,222.54
440 Rentals				3,840.89
460 Extermination Services				10,691.64
490 Other Purchased Property Services				17,781.00
Total Purchased Property Services				\$1,289,533.03
500 Other Purchased Services				
523 General Property and Liability Insurance				227,474.85
530 Communications				243,501.09
580 Travel				2,606.20
Total Other Purchased Services				\$473,582.14
600 Supplies				
610 General Supplies	208,663.10	400,029.68		608,692.78
620 Energy				701,021.44
630 Food				2,229.27
650 Supplies & Fees – Technology Related				10,287.79
Total Supplies	\$208,663.10	\$400,029.68		\$1,322,231.28
700 Property				
752 Capital Equipment – Original and Additional				37,573.97
762 Capitalized Equipment - Replacement				67,671.99
Total Property				\$105,245.96
800 Other Objects				
810 Dues and Fees				55,503.77
Total Other Objects				\$55,503.77
Total 2600 Operation and Maintenance of Plant Services	\$208,663.10	\$400,029.68		\$9,652,156.90

General Fund (10)

	<u>Elementary</u>	<u>Secondary</u>	<u>Federal</u>	<u>Total</u>
2610 Supervision of Operation and Maintenance of Plant Services				
100 Personnel Services – Salaries				
100 Personnel Services – Salaries				302,687.44
Total Personnel Services – Salaries				\$302,687.44
200 Personnel Services – Employee Benefits				
210 Group Insurance – Contracted Provider				29,269.69
220 Social Security Contributions				22,980.03
230 PSERS Retirement Contributions				104,611.42
260 Workers' Compensation				2,724.08
270 Group Insurance – Self-Insurance				11,457.97
292 Health Savings Accounts				11,822.70
Total Personnel Services – Employee Benefits				\$182,865.89
300 Purchased Professional and Technical Services				
330 Other Professional Services				12,522.75
Total Purchased Professional and Technical Services				\$12,522.75
400 Purchased Property Services				
410 Cleaning Services				563,766.64
420 Utility Services				142,230.32
430 Repairs and Maintenance Services				544,425.54
440 Rentals				3,840.89
460 Extermination Services				10,691.64
490 Other Purchased Property Services				17,781.00
Total Purchased Property Services				\$1,282,736.03
500 Other Purchased Services				
523 General Property and Liability Insurance				227,474.85
530 Communications				243,501.09
580 Travel				1,226.84
Total Other Purchased Services				\$472,202.78
600 Supplies				
610 General Supplies	204,448.09	393,691.87		598,139.96
620 Energy				701,021.44
630 Food				2,229.27
650 Supplies & Fees – Technology Related				10,287.79
Total Supplies	\$204,448.09	\$393,691.87		\$1,311,678.46
700 Property				
752 Capital Equipment – Original and Additional				26,704.31
762 Capitalized Equipment - Replacement				65,028.50
Total Property				\$91,732.81
800 Other Objects				
810 Dues and Fees				19,745.77
Total Other Objects				\$19,745.77
Total 2610 Supervision of Operation and Maintenance of Plant Services	\$204,448.09	\$393,691.87		\$3,676,171.93

General Fund (10)

	<u>Elementary</u>	<u>Secondary</u>	<u>Federal</u>	<u>Total</u>
2611 Supervision of Operation and Maintenance of Plant Services – Head of Component				
100 Personnel Services – Salaries				
100 Personnel Services – Salaries				204,125.63
Total Personnel Services – Salaries				\$204,125.63
200 Personnel Services – Employee Benefits				
210 Group Insurance – Contracted Provider				14,227.27
220 Social Security Contributions				15,509.46
230 PSERS Retirement Contributions				69,858.53
260 Workers' Compensation				1,836.96
270 Group Insurance – Self-Insurance				6,876.19
292 Health Savings Accounts				6,894.66
Total Personnel Services – Employee Benefits				\$115,203.07
Total 2611 Supervision of Operation and Maintenance of Plant Services – Head of Component				\$319,328.70

General Fund (10)

	<u>Elementary</u>	<u>Secondary</u>	<u>Federal</u>	<u>Total</u>
2620 Operation of Buildings Services				
100 Personnel Services – Salaries				
100 Personnel Services – Salaries				3,064,609.12
Total Personnel Services – Salaries				\$3,064,609.12
200 Personnel Services – Employee Benefits				
210 Group Insurance – Contracted Provider				563,547.34
220 Social Security Contributions				228,614.67
230 PSERS Retirement Contributions				1,047,651.10
250 Unemployment Compensation				5,832.00
260 Workers' Compensation				27,206.62
270 Group Insurance – Self-Insurance				233,788.38
292 Health Savings Accounts				32,518.60
Total Personnel Services – Employee Benefits				\$2,139,158.71
Total 2620 Operation of Buildings Services				\$5,203,767.83

General Fund (10)

	<u>Elementary</u>	<u>Secondary</u>	<u>Federal</u>	<u>Total</u>
2660 Safety and Security Services				
100 Personnel Services – Salaries				
100 Personnel Services – Salaries				223,941.47
Total Personnel Services – Salaries				\$223,941.47
200 Personnel Services – Employee Benefits				
210 Group Insurance – Contracted Provider				33,255.73
220 Social Security Contributions				16,700.19
230 PSERS Retirement Contributions				74,702.15
260 Workers' Compensation				1,982.15
270 Group Insurance – Self-Insurance				11,457.97
292 Health Savings Accounts				5,082.17
Total Personnel Services – Employee Benefits				\$143,180.36
300 Purchased Professional and Technical Services				
330 Other Professional Services				337,094.98
Total Purchased Professional and Technical Services				\$337,094.98
400 Purchased Property Services				
430 Repairs and Maintenance Services				6,797.00
Total Purchased Property Services				\$6,797.00
500 Other Purchased Services				
580 Travel				1,379.36
Total Other Purchased Services				\$1,379.36
600 Supplies				
610 General Supplies	4,215.01	6,337.81		10,552.82
Total Supplies	\$4,215.01	\$6,337.81		\$10,552.82
700 Property				
752 Capital Equipment – Original and Additional				10,869.66
762 Capitalized Equipment - Replacement				2,643.49
Total Property				\$13,513.15
800 Other Objects				
810 Dues and Fees				35,758.00
Total Other Objects				\$35,758.00
Total 2660 Safety and Security Services	\$4,215.01	\$6,337.81		\$772,217.14

General Fund (10)

	<u>Elementary</u>	<u>Secondary</u>	<u>Federal</u>	<u>Total</u>
2700 Student Transportation Services				
100 Personnel Services – Salaries				
100 Personnel Services – Salaries				2,578,391.26
Total Personnel Services – Salaries				\$2,578,391.26
200 Personnel Services – Employee Benefits				
210 Group Insurance – Contracted Provider				695,170.46
220 Social Security Contributions				188,234.05
230 PSERS Retirement Contributions				900,503.54
260 Workers' Compensation				23,200.67
270 Group Insurance – Self-Insurance				258,538.67
292 Health Savings Accounts				11,197.06
Total Personnel Services – Employee Benefits				\$2,076,844.45
300 Purchased Professional and Technical Services				
330 Other Professional Services				2,246.30
340 Technical Services				64,396.88
Total Purchased Professional and Technical Services				\$66,643.18
400 Purchased Property Services				
410 Cleaning Services				1,781.92
430 Repairs and Maintenance Services				15,384.13
440 Rentals				9,000.00
Total Purchased Property Services				\$26,166.05
500 Other Purchased Services				
513 Contracted Carriers				34,920.67
515 Public Carriers				120.00
522 Automotive Liability Insurance				57,015.00
530 Communications				14,378.76
580 Travel				2,278.80
Total Other Purchased Services				\$108,713.23
600 Supplies				
610 General Supplies				191,565.55
620 Energy				248,002.58
650 Supplies & Fees – Technology Related				30,558.80
Total Supplies				\$470,126.93
800 Other Objects				
810 Dues and Fees				281.20
Total Other Objects				\$281.20
Total 2700 Student Transportation Services				\$5,327,166.30

General Fund (10)

	<u>Elementary</u>	<u>Secondary</u>	<u>Federal</u>	<u>Total</u>
2710 Supervision of Student Transportation Services				
100 Personnel Services – Salaries				
100 Personnel Services – Salaries				188,557.17
Total Personnel Services – Salaries				\$188,557.17
200 Personnel Services – Employee Benefits				
210 Group Insurance – Contracted Provider				31,399.98
220 Social Security Contributions				14,123.77
230 PSERS Retirement Contributions				66,425.62
260 Workers' Compensation				1,695.52
270 Group Insurance – Self-Insurance				18,802.53
292 Health Savings Accounts				3,758.85
Total Personnel Services – Employee Benefits				\$136,206.27
300 Purchased Professional and Technical Services				
330 Other Professional Services				1,809.68
340 Technical Services				64,396.88
Total Purchased Professional and Technical Services				\$66,206.56
400 Purchased Property Services				
410 Cleaning Services				1,435.56
430 Repairs and Maintenance Services				12,393.84
440 Rentals				9,000.00
Total Purchased Property Services				\$22,829.40
500 Other Purchased Services				
513 Contracted Carriers				18,487.58
515 Public Carriers				96.68
522 Automotive Liability Insurance				45,932.72
530 Communications				11,583.89
580 Travel				1,796.75
Total Other Purchased Services				\$77,897.62
600 Supplies				
610 General Supplies				154,330.02
620 Energy				213,107.12
650 Supplies & Fees – Technology Related				30,558.80
Total Supplies				\$397,995.94
800 Other Objects				
810 Dues and Fees				230.19
Total Other Objects				\$230.19
Total 2710 Supervision of Student Transportation Services				\$889,923.15

General Fund (10)

2711 Supervision of Student Transportation Services – Head of Component

Elementary

Secondary

Federal

Total

100 Personnel Services – Salaries

100 Personnel Services – Salaries

188,557.17

Total Personnel Services – Salaries

\$188,557.17

200 Personnel Services – Employee Benefits

210 Group Insurance – Contracted Provider

31,399.98

220 Social Security Contributions

14,123.77

230 PSERS Retirement Contributions

66,425.62

260 Workers' Compensation

1,695.52

270 Group Insurance – Self-Insurance

18,802.53

292 Health Savings Accounts

3,758.85

Total Personnel Services – Employee Benefits

\$136,206.27

Total 2711 Supervision of Student Transportation Services – Head of Component

\$324,763.44

General Fund (10)

2719 Supervision of Student Transportation Services – All Other Supervision

Elementary Secondary Federal Total

300 Purchased Professional and Technical Services

330 Other Professional Services 1,809.68
340 Technical Services 64,396.88

Total Purchased Professional and Technical Services \$66,206.56

400 Purchased Property Services

410 Cleaning Services 1,435.56
430 Repairs and Maintenance Services 12,393.84
440 Rentals 9,000.00

Total Purchased Property Services \$22,829.40

500 Other Purchased Services

513 Contracted Carriers 18,487.58
515 Public Carriers 96.68
522 Automotive Liability Insurance 45,932.72
530 Communications 11,583.89
580 Travel 1,796.75

Total Other Purchased Services \$77,897.62

600 Supplies

610 General Supplies 154,330.02
620 Energy 213,107.12
650 Supplies & Fees – Technology Related 30,558.80

Total Supplies \$397,995.94

800 Other Objects

810 Dues and Fees 230.19

Total Other Objects \$230.19

Total 2719 Supervision of Student Transportation Services – All Other Supervision

\$565,159.71

General Fund (10)

2720 Vehicle Operation Services

Elementary

Secondary

Federal

Total

100 Personnel Services – Salaries

100 Personnel Services – Salaries

1,530,988.04

Total Personnel Services – Salaries

\$1,530,988.04

200 Personnel Services – Employee Benefits

210 Group Insurance – Contracted Provider

467,443.49

220 Social Security Contributions

110,379.53

230 PSERS Retirement Contributions

531,999.43

260 Workers' Compensation

13,687.44

270 Group Insurance – Self-Insurance

158,063.65

Total Personnel Services – Employee Benefits

\$1,281,573.54

500 Other Purchased Services

513 Contracted Carriers

11,972.55

Total Other Purchased Services

\$11,972.55

Total 2720 Vehicle Operation Services

\$2,824,534.13

General Fund (10)

2730 Monitoring Services

Elementary

Secondary

Federal

Total

100 Personnel Services – Salaries

100 Personnel Services – Salaries

150,249.13

Total Personnel Services – Salaries

\$150,249.13

200 Personnel Services – Employee Benefits

210 Group Insurance – Contracted Provider

33,692.02

220 Social Security Contributions

11,021.70

230 PSERS Retirement Contributions

50,847.51

260 Workers' Compensation

1,352.34

270 Group Insurance – Self-Insurance

20,181.67

Total Personnel Services – Employee Benefits

\$117,095.24

Total 2730 Monitoring Services

\$267,344.37

General Fund (10)

2740 Vehicle Servicing and Maintenance Services

Elementary

Secondary

Federal

Total

100 Personnel Services – Salaries

100 Personnel Services – Salaries

227,880.65

Total Personnel Services – Salaries

\$227,880.65

200 Personnel Services – Employee Benefits

210 Group Insurance – Contracted Provider

28,860.46

220 Social Security Contributions

16,630.47

230 PSERS Retirement Contributions

78,649.26

260 Workers' Compensation

2,018.37

270 Group Insurance – Self-Insurance

11,805.78

292 Health Savings Accounts

5,261.78

Total Personnel Services – Employee Benefits

\$143,226.12

Total 2740 Vehicle Servicing and Maintenance Services

\$371,106.77

General Fund (10)

	<u>Elementary</u>	<u>Secondary</u>	<u>Federal</u>	<u>Total</u>
2750 Nonpublic Transportation				
100 Personnel Services – Salaries				
100 Personnel Services – Salaries				480,716.27
Total Personnel Services – Salaries				\$480,716.27
200 Personnel Services – Employee Benefits				
210 Group Insurance – Contracted Provider				133,774.51
220 Social Security Contributions				36,078.58
230 PSERS Retirement Contributions				172,581.72
260 Workers' Compensation				4,447.00
270 Group Insurance – Self-Insurance				49,685.04
292 Health Savings Accounts				2,176.43
Total Personnel Services – Employee Benefits				\$398,743.28
300 Purchased Professional and Technical Services				
330 Other Professional Services				436.62
Total Purchased Professional and Technical Services				\$436.62
400 Purchased Property Services				
410 Cleaning Services				346.36
430 Repairs and Maintenance Services				2,990.29
Total Purchased Property Services				\$3,336.65
500 Other Purchased Services				
513 Contracted Carriers				4,460.54
515 Public Carriers				23.32
522 Automotive Liability Insurance				11,082.28
530 Communications				2,794.87
580 Travel				482.05
Total Other Purchased Services				\$18,843.06
600 Supplies				
610 General Supplies				37,235.53
620 Energy				34,895.46
Total Supplies				\$72,130.99
800 Other Objects				
810 Dues and Fees				51.01
Total Other Objects				\$51.01
Total 2750 Nonpublic Transportation				\$974,257.88

General Fund (10)

	<u>Elementary</u>	<u>Secondary</u>	<u>Federal</u>	<u>Total</u>
2800 Support Services – Central				
100 Personnel Services – Salaries				
100 Personnel Services – Salaries				805,685.64
Total Personnel Services – Salaries				\$805,685.64
200 Personnel Services – Employee Benefits				
210 Group Insurance – Contracted Provider				99,067.14
220 Social Security Contributions				60,415.95
230 PSERS Retirement Contributions				278,515.53
240 Tuition Reimbursement				41,478.68
260 Workers' Compensation				7,251.52
270 Group Insurance – Self-Insurance				39,363.38
292 Health Savings Accounts				31,878.00
Total Personnel Services – Employee Benefits				\$557,970.20
300 Purchased Professional and Technical Services				
330 Other Professional Services				131,195.78
340 Technical Services				239,520.42
360 Employee Training and Development Services				16,099.30
Total Purchased Professional and Technical Services				\$386,815.50
400 Purchased Property Services				
430 Repairs and Maintenance Services				60,622.65
Total Purchased Property Services				\$60,622.65
500 Other Purchased Services				
580 Travel				3,752.93
Total Other Purchased Services				\$3,752.93
600 Supplies				
610 General Supplies				121,730.87
630 Food				370.85
Total Supplies				\$122,101.72
700 Property				
738 Technology Software Lease and Other Right-to-Use Arrangements				305,506.94
752 Capital Equipment – Original and Additional				1,568.01
756 Capitalized Technology Equipment – Original			20,819.40	51,035.02
766 Capitalized Technology Equipment – Replacement				34,853.54
Total Property			\$20,819.40	\$392,963.51
800 Other Objects				
810 Dues and Fees				979.95
Total Other Objects				\$979.95
Total 2800 Support Services – Central			\$20,819.40	\$2,330,892.10

General Fund (10)

2810 Planning, Research, Development and Evaluation Services

Elementary

Secondary

Federal

Total

700 Property

738 Technology Software Lease and Other Right-to-Use Arrangements

305,506.94

Total Property				\$305,506.94
Total 2810 Planning, Research, Development and Evaluation Services				\$305,506.94

General Fund (10)

2830 Staff Services

Elementary

Secondary

Federal

Total

200 Personnel Services – Employee Benefits

240 Tuition Reimbursement

41,478.68

Total Personnel Services – Employee Benefits

\$41,478.68

300 Purchased Professional and Technical Services

360 Employee Training and Development Services

16,099.30

Total Purchased Professional and Technical Services

\$16,099.30

Total 2830 Staff Services

\$57,577.98

General Fund (10)

	<u>Elementary</u>	<u>Secondary</u>	<u>Federal</u>	<u>Total</u>
2834 Staff Development Services – Non-Instructional, Certified Staff Only				
200 Personnel Services – Employee Benefits				
240 Tuition Reimbursement				28,275.20
Total Personnel Services – Employee Benefits				\$28,275.20
300 Purchased Professional and Technical Services				
360 Employee Training and Development Services				2,353.61
Total Purchased Professional and Technical Services				\$2,353.61
Total 2834 Staff Development Services – Non-Instructional, Certified Staff Only				\$30,628.81

General Fund (10)

	<u>Elementary</u>	<u>Secondary</u>	<u>Federal</u>	<u>Total</u>
2836 Staff Development Services – Non-Instructional, Non-Certified Staff Only				
200 Personnel Services – Employee Benefits				
240 Tuition Reimbursement				13,203.48
Total Personnel Services – Employee Benefits				\$13,203.48
300 Purchased Professional and Technical Services				
360 Employee Training and Development Services				13,745.69
Total Purchased Professional and Technical Services				\$13,745.69
Total 2836 Staff Development Services – Non-Instructional, Non-Certified Staff Only				\$26,949.17

General Fund (10)

2840 Data Processing Services

	<u>Elementary</u>	<u>Secondary</u>	<u>Federal</u>	<u>Total</u>
100 Personnel Services – Salaries				
100 Personnel Services – Salaries				805,685.64
Total Personnel Services – Salaries				\$805,685.64
200 Personnel Services – Employee Benefits				
210 Group Insurance – Contracted Provider				99,067.14
220 Social Security Contributions				60,415.95
230 PSERS Retirement Contributions				278,515.53
260 Workers' Compensation				7,251.52
270 Group Insurance – Self-Insurance				39,363.38
292 Health Savings Accounts				31,878.00
Total Personnel Services – Employee Benefits				\$516,491.52
300 Purchased Professional and Technical Services				
330 Other Professional Services				131,195.78
340 Technical Services				239,520.42
Total Purchased Professional and Technical Services				\$370,716.20
400 Purchased Property Services				
430 Repairs and Maintenance Services				60,622.65
Total Purchased Property Services				\$60,622.65
500 Other Purchased Services				
580 Travel				3,752.93
Total Other Purchased Services				\$3,752.93
600 Supplies				
610 General Supplies				121,730.87
630 Food				370.85
Total Supplies				\$122,101.72
700 Property				
752 Capital Equipment – Original and Additional				1,568.01
756 Capitalized Technology Equipment – Original			20,819.40	51,035.02
766 Capitalized Technology Equipment – Replacement				34,853.54
Total Property			\$20,819.40	\$87,456.57
800 Other Objects				
810 Dues and Fees				979.95
Total Other Objects				\$979.95
Total 2840 Data Processing Services			\$20,819.40	\$1,967,807.18

General Fund (10)

2900 Other Support Services

Elementary

Secondary

Federal

Total

500 Other Purchased Services

595 IU Payments By Withholding

79,567.01

Total Other Purchased Services

\$79,567.01

Total 2900 Other Support Services

\$79,567.01

General Fund (10)

2910 Support Services Not Listed Elsewhere In the 2000 Series

Elementary

Secondary

Federal

Total

500 Other Purchased Services

595 IU Payments By Withholding

79,567.01

Total Other Purchased Services

\$79,567.01

Total 2910 Support Services Not Listed Elsewhere In the 2000 Series

\$79,567.01

General Fund (10)

3000 Operation of Non-Instructional Services	<u>Total</u>
100 Personnel Services – Salaries	
100 Personnel Services – Salaries	842,280.94
Total Personnel Services – Salaries	\$842,280.94
200 Personnel Services – Employee Benefits	
210 Group Insurance – Contracted Provider	46,723.89
220 Social Security Contributions	63,549.02
230 PSERS Retirement Contributions	278,974.73
260 Workers’ Compensation	7,565.48
270 Group Insurance – Self-Insurance	14,382.13
292 Health Savings Accounts	6,308.78
Total Personnel Services – Employee Benefits	\$417,504.03
300 Purchased Professional and Technical Services	
330 Other Professional Services	102,130.47
390 Other Purchased Professional and Technical Services	57,889.00
Total Purchased Professional and Technical Services	\$160,019.47
400 Purchased Property Services	
430 Repairs and Maintenance Services	10,835.60
440 Rentals	5,651.88
Total Purchased Property Services	\$16,487.48
500 Other Purchased Services	
580 Travel	17,772.95
Total Other Purchased Services	\$17,772.95
600 Supplies	
610 General Supplies	173,071.25
630 Food	68.95
Total Supplies	\$173,140.20
700 Property	
752 Capital Equipment – Original and Additional	4,147.29
Total Property	\$4,147.29
800 Other Objects	
810 Dues and Fees	84,888.19
Total Other Objects	\$84,888.19
Total 3000 Operation of Non-Instructional Services	\$1,716,240.55

General Fund (10)

3200 Student Activities

Elementary Secondary Federal Total

100	<u>Personnel Services – Salaries</u>				
	100 Personnel Services – Salaries				842,280.94
Total Personnel Services – Salaries					\$842,280.94
200	<u>Personnel Services – Employee Benefits</u>				
	210 Group Insurance – Contracted Provider				46,723.89
	220 Social Security Contributions				63,549.02
	230 PSERS Retirement Contributions				278,974.73
	260 Workers' Compensation				7,565.48
	270 Group Insurance – Self-Insurance				14,382.13
	292 Health Savings Accounts				6,308.78
Total Personnel Services – Employee Benefits					\$417,504.03
300	<u>Purchased Professional and Technical Services</u>				
	330 Other Professional Services				102,130.47
	390 Other Purchased Professional and Technical Services				57,889.00
Total Purchased Professional and Technical Services					\$160,019.47
400	<u>Purchased Property Services</u>				
	430 Repairs and Maintenance Services				10,835.60
	440 Rentals				5,651.88
Total Purchased Property Services					\$16,487.48
500	<u>Other Purchased Services</u>				
	580 Travel				17,772.95
Total Other Purchased Services					\$17,772.95
600	<u>Supplies</u>				
	610 General Supplies				172,139.78
Total Supplies					\$172,139.78
700	<u>Property</u>				
	752 Capital Equipment – Original and Additional				4,147.29
Total Property					\$4,147.29
800	<u>Other Objects</u>				
	810 Dues and Fees				84,888.19
Total Other Objects					\$84,888.19
Total 3200 Student Activities					\$1,715,240.13

LEA : 125237603 Radnor Township SD

Printed 1/5/2024 11:52:09 AM

General Fund (10)

3300 Community Services

600 Supplies

610 General Supplies

630 Food

Total Supplies

Total 3300 Community Services

Elementary

Secondary

Federal

Total

931.47

931.47

68.95

68.95

\$1,000.42

\$1,000.42

\$1,000.42

\$1,000.42

General Fund (10)

4000 Facilities Acquisition, Construction and Improvement Services

Total

600 Supplies

610 General Supplies

85,056.80

Total Supplies

\$85,056.80

Total 4000 Facilities Acquisition, Construction and Improvement Services

\$85,056.80

LEA : 125237603 Radnor Township SD

Printed 1/5/2024 11:52:12 AM

General Fund (10)

4600 Existing Building Improvement Services

Elementary

Secondary

Federal

Total

600 Supplies

610 General Supplies

85,056.80

Total Supplies

\$85,056.80

Total 4600 Existing Building Improvement Services

\$85,056.80

LEA : 125237603 Radnor Township SD

Printed 1/5/2024 11:52:18 AM

General Fund (10)

5000 Other Expenditures and Financing Uses

Total

800 Other Objects

830 Interest	2,950,835.67
880 Refunds of Prior Years' Receipts	4,247.94

Total Other Objects	\$2,955,083.61
----------------------------	-----------------------

900 Other Uses of Funds

910 Redemption of Principal	4,706,789.40
920 Authority Obligations	277,928.00
932 Capital Reserve Fund Transfers Applicable To Fund 32	4,575,000.00
933 Athletic Fund Transfers	45,000.00
939 Other Fund Transfers	210,465.00

Total Other Uses of Funds	\$9,815,182.40
----------------------------------	-----------------------

Total 5000 Other Expenditures and Financing Uses	\$12,770,266.01
---	------------------------

LEA : 125237603 Radnor Township SD

Printed 1/5/2024 11:52:18 AM

General Fund (10)

5100 Debt Service / Other Expenditures and Financing Uses	<u>Elementary</u>	<u>Secondary</u>	<u>Federal</u>	<u>Total</u>
800 Other Objects				
830 Interest				2,950,835.67
880 Refunds of Prior Years' Receipts				4,247.94
Total Other Objects				\$2,955,083.61
900 Other Uses of Funds				
910 Redemption of Principal				4,706,789.40
920 Authority Obligations				277,928.00
Total Other Uses of Funds				\$4,984,717.40
Total 5100 Debt Service / Other Expenditures and Financing Uses				\$7,939,801.01

LEA : 125237603 Radnor Township SD

Printed 1/5/2024 11:52:18 AM

General Fund (10)

5110 Debt Service

Elementary

Secondary

Federal

Total

800 Other Objects

830 Interest

2,923,893.76

Total Other Objects

\$2,923,893.76

900 Other Uses of Funds

910 Redemption of Principal

4,335,000.00

920 Authority Obligations

277,928.00

Total Other Uses of Funds

\$4,612,928.00

Total 5110 Debt Service

\$7,536,821.76

LEA : 125237603 Radnor Township SD

Printed 1/5/2024 11:52:18 AM

General Fund (10)

	<u>Elementary</u>	<u>Secondary</u>	<u>Federal</u>	<u>Total</u>
5130 Refund of Prior Year Revenues / Receipts				
800 <u>Other Objects</u>				
880 Refunds of Prior Years' Receipts				4,247.94
Total Other Objects				\$4,247.94
Total 5130 Refund of Prior Year Revenues / Receipts				\$4,247.94

General Fund (10)

5140 Leases and Other Right-to-Use Arrangements

Elementary

Secondary

Federal

Total

800 Other Objects

830 Interest 26,941.91

Total Other Objects

\$26,941.91

900 Other Uses of Funds

910 Redemption of Principal 371,789.40

Total Other Uses of Funds

\$371,789.40

Total 5140 Leases and Other Right-to-Use Arrangements

\$398,731.31

LEA : 125237603 Radnor Township SD

Printed 1/5/2024 11:52:18 AM

General Fund (10)

5200 Interfund Transfers – Out

Elementary

Secondary

Federal

Total

900 Other Uses of Funds

932 Capital Reserve Fund Transfers Applicable To Fund 32

4,575,000.00

933 Athletic Fund Transfers

45,000.00

939 Other Fund Transfers

210,465.00

Total Other Uses of Funds

\$4,830,465.00

Total 5200 Interfund Transfers – Out

\$4,830,465.00

LEA : 125237603 Radnor Township SD

Printed 1/5/2024 11:52:18 AM

General Fund (10)

	<u>Elementary</u>	<u>Secondary</u>	<u>Federal</u>	<u>Total</u>
5220 Special Revenue Fund Transfers				
900 Other Uses of Funds				
933 Athletic Fund Transfers				45,000.00
Total Other Uses of Funds				\$45,000.00
Total 5220 Special Revenue Fund Transfers				\$45,000.00

LEA : 125237603 Radnor Township SD

Printed 1/5/2024 11:52:18 AM

General Fund (10)

5230 Capital Projects Fund Transfers

Elementary

Secondary

Federal

Total

900 Other Uses of Funds

932 Capital Reserve Fund Transfers Applicable To Fund 32

4,575,000.00

Total Other Uses of Funds

\$4,575,000.00

Total 5230 Capital Projects Fund Transfers

\$4,575,000.00

LEA : 125237603 Radnor Township SD

Printed 1/5/2024 11:52:18 AM

General Fund (10)

5240 Debt Service Fund Transfers

Elementary

Secondary

Federal

Total

900 Other Uses of Funds

939 Other Fund Transfers

210,465.00

Total Other Uses of Funds

\$210,465.00

Total 5240 Debt Service Fund Transfers

\$210,465.00

LEA : 125237603 Radnor Township SD

Printed 1/5/2024 11:52:10 AM

Athletic / School-Sponsored Extra Curricular Activities Fund (29)

3000 Operation of Non-Instructional Services	<u>Total</u>
300 <u>Purchased Professional and Technical Services</u>	
330 Other Professional Services	36,575.00
Total Purchased Professional and Technical Services	\$36,575.00
Total 3000 Operation of Non-Instructional Services	\$36,575.00

LEA : 125237603 Radnor Township SD

Printed 1/5/2024 11:52:10 AM

Athletic / School-Sponsored Extra Curricular Activities Fund (29)

3300 Community Services

Elementary

Secondary

Federal

Total

300 Purchased Professional and Technical Services

330 Other Professional Services

36,575.00

Total Purchased Professional and Technical Services

\$36,575.00

Total 3300 Community Services

\$36,575.00

LEA : 125237603 Radnor Township SD

Printed 1/5/2024 11:52:04 AM

Capital Reserve Fund - § 1431 (32)

2000 Support Services

Total

300 Purchased Professional and Technical Services

330 Other Professional Services

266,884.68

Total Purchased Professional and Technical Services

\$266,884.68

400 Purchased Property Services

430 Repairs and Maintenance Services

30,575.00

Total Purchased Property Services

\$30,575.00

700 Property

762 Capitalized Equipment - Replacement

1,091,791.00

Total Property

\$1,091,791.00

Total 2000 Support Services

\$1,389,250.68

Capital Reserve Fund - § 1431 (32)

2600 Operation and Maintenance of Plant Services

Elementary

Secondary

Federal

Total

300 Purchased Professional and Technical Services

330 Other Professional Services

266,884.68

Total Purchased Professional and Technical Services

\$266,884.68

400 Purchased Property Services

430 Repairs and Maintenance Services

30,575.00

Total Purchased Property Services

\$30,575.00

Total 2600 Operation and Maintenance of Plant Services

\$297,459.68

Capital Reserve Fund - § 1431 (32)

	<u>Elementary</u>	<u>Secondary</u>	<u>Federal</u>	<u>Total</u>
2610 Supervision of Operation and Maintenance of Plant Services				
300 <u>Purchased Professional and Technical Services</u>				
330 Other Professional Services				266,884.68
Total Purchased Professional and Technical Services				\$266,884.68
400 <u>Purchased Property Services</u>				
430 Repairs and Maintenance Services				30,575.00
Total Purchased Property Services				\$30,575.00
Total 2610 Supervision of Operation and Maintenance of Plant Services				\$297,459.68

Capital Reserve Fund - § 1431 (32)

2619 Supervision of Operation and Maintenance of Plant Services – All Other Supervision

Elementary

Secondary

Federal

Total

300 Purchased Professional and Technical Services

330 Other Professional Services

266,884.68

Total Purchased Professional and Technical Services

\$266,884.68

400 Purchased Property Services

430 Repairs and Maintenance Services

30,575.00

Total Purchased Property Services

\$30,575.00

Total 2619 Supervision of Operation and Maintenance of Plant Services – All Other Supervision

\$297,459.68

LEA : 125237603 Radnor Township SD

Printed 1/5/2024 11:52:04 AM

Capital Reserve Fund - § 1431 (32)

2700 Student Transportation Services

Elementary

Secondary

Federal

Total

700 Property

762 Capitalized Equipment - Replacement

1,091,791.00

Total Property

\$1,091,791.00

Total 2700 Student Transportation Services

\$1,091,791.00

LEA : 125237603 Radnor Township SD

Printed 1/5/2024 11:52:04 AM

Capital Reserve Fund - § 1431 (32)

2710 Supervision of Student Transportation Services

Elementary

Secondary

Federal

Total

700 Property

762 Capitalized Equipment - Replacement

1,091,791.00

Total Property

\$1,091,791.00

Total 2710 Supervision of Student Transportation Services

\$1,091,791.00

LEA : 125237603 Radnor Township SD

Printed 1/5/2024 11:52:04 AM

Capital Reserve Fund - § 1431 (32)

2719 Supervision of Student Transportation Services – All Other Supervision

Elementary

Secondary

Federal

Total

700 Property

762 Capitalized Equipment - Replacement

1,091,791.00

Total Property

\$1,091,791.00

Total 2719 Supervision of Student Transportation Services – All Other Supervision

\$1,091,791.00

Capital Reserve Fund - § 1431 (32)

4000 Facilities Acquisition, Construction and Improvement Services

Total

300 Purchased Professional and Technical Services

330 Other Professional Services	1,492,751.77
390 Other Purchased Professional and Technical Services	420,174.99

Total Purchased Professional and Technical Services	\$1,912,926.76
--	-----------------------

400 Purchased Property Services

430 Repairs and Maintenance Services	22,513.00
--------------------------------------	-----------

Total Purchased Property Services	\$22,513.00
--	--------------------

600 Supplies

610 General Supplies	8,785.00
----------------------	----------

Total Supplies	\$8,785.00
-----------------------	-------------------

700 Property

752 Capital Equipment – Original and Additional	23,520.00
762 Capitalized Equipment - Replacement	311,774.98

Total Property	\$335,294.98
-----------------------	---------------------

Total 4000 Facilities Acquisition, Construction and Improvement Services	\$2,279,519.74
---	-----------------------

LEA : 125237603 Radnor Township SD

Printed 1/5/2024 11:52:15 AM

Capital Reserve Fund - § 1431 (32)

	<u>Elementary</u>	<u>Secondary</u>	<u>Federal</u>	<u>Total</u>
4600 Existing Building Improvement Services				
300 <u>Purchased Professional and Technical Services</u>				
330 Other Professional Services				1,492,751.77
390 Other Purchased Professional and Technical Services				420,174.99
Total Purchased Professional and Technical Services				\$1,912,926.76
400 <u>Purchased Property Services</u>				
430 Repairs and Maintenance Services				22,513.00
Total Purchased Property Services				\$22,513.00
600 <u>Supplies</u>				
610 General Supplies				8,785.00
Total Supplies				\$8,785.00
700 <u>Property</u>				
752 Capital Equipment – Original and Additional				23,520.00
762 Capitalized Equipment - Replacement				311,774.98
Total Property				\$335,294.98
Total 4600 Existing Building Improvement Services				\$2,279,519.74

Other Capital Projects Fund (39)

2000 Support Services

700 Property

738 Technology Software Lease and Other Right-to-Use Arrangements

401,363.00

Total Property

\$401,363.00

800 Other Objects

810 Dues and Fees

246,744.85

Total Other Objects

\$246,744.85

Total 2000 Support Services

\$648,107.85

LEA : 125237603 Radnor Township SD

Printed 1/5/2024 11:52:07 AM

Other Capital Projects Fund (39)

2100 Support Services – Students

700 Property

738 Technology Software Lease and Other Right-to-Use Arrangements

	<u>Elementary</u>	<u>Secondary</u>	<u>Federal</u>	<u>Total</u>
738 Technology Software Lease and Other Right-to-Use Arrangements	210,354.35	191,008.65		401,363.00
Total Property	\$210,354.35	\$191,008.65		\$401,363.00
Total 2100 Support Services – Students	\$210,354.35	\$191,008.65		\$401,363.00

LEA : 125237603 Radnor Township SD

Printed 1/5/2024 11:52:07 AM

Other Capital Projects Fund (39)

2110 Supervision of Student Services

700 Property

738 Technology Software Lease and Other Right-to-Use Arrangements

Total Property

Total 2110 Supervision of Student Services

	<u>Elementary</u>	<u>Secondary</u>	<u>Federal</u>	<u>Total</u>
	210,354.35	191,008.65		401,363.00
	\$210,354.35	\$191,008.65		\$401,363.00
	\$210,354.35	\$191,008.65		\$401,363.00

LEA : 125237603 Radnor Township SD

Printed 1/5/2024 11:52:07 AM

Other Capital Projects Fund (39)

	<u>Elementary</u>	<u>Secondary</u>	<u>Federal</u>	<u>Total</u>
2111 Supervision of Student Services – Head of Component				
700 Property				
738 Technology Software Lease and Other Right-to-Use Arrangements	210,354.35	191,008.65		401,363.00
Total Property	\$210,354.35	\$191,008.65		\$401,363.00
Total 2111 Supervision of Student Services – Head of Component	\$210,354.35	\$191,008.65		\$401,363.00

LEA : 125237603 Radnor Township SD

Printed 1/5/2024 11:52:07 AM

Other Capital Projects Fund (39)

2300 Support Services – Administration

Elementary

Secondary

Federal

Total

800 Other Objects

810 Dues and Fees

246,744.85

Total Other Objects

\$246,744.85

Total 2300 Support Services – Administration

\$246,744.85

LEA : 125237603 Radnor Township SD

Printed 1/5/2024 11:52:07 AM

Other Capital Projects Fund (39)

2390 Other Administration Services

Elementary

Secondary

Federal

Total

800 Other Objects

810 Dues and Fees

246,744.85

Total Other Objects

\$246,744.85

Total 2390 Other Administration Services

\$246,744.85

Other Capital Projects Fund (39)

4000 Facilities Acquisition, Construction and Improvement Services

Total

300 Purchased Professional and Technical Services

330 Other Professional Services	254,571.77
340 Technical Services	230,984.86
390 Other Purchased Professional and Technical Services	6,401,998.23

Total Purchased Professional and Technical Services	\$6,887,554.86
--	-----------------------

500 Other Purchased Services

520 Insurance – General	2,482.00
-------------------------	----------

Total Other Purchased Services	\$2,482.00
---------------------------------------	-------------------

700 Property

752 Capital Equipment – Original and Additional	15,052.17
762 Capitalized Equipment - Replacement	85,699.24

Total Property	\$100,751.41
-----------------------	---------------------

Total 4000 Facilities Acquisition, Construction and Improvement Services	\$6,990,788.27
---	-----------------------

Other Capital Projects Fund (39)

4300 Architecture and Engineering Services / Educational Specifications Development – Original and Additional

Elementary

Secondary

Federal

Total

300 Purchased Professional and Technical Services

330 Other Professional Services

254,571.77

340 Technical Services

164,412.50

Total Purchased Professional and Technical Services

\$418,984.27

Total 4300 Architecture and Engineering Services / Educational Specifications Development – Original and Additional

\$418,984.27

Other Capital Projects Fund (39)

4600 Existing Building Improvement Services

Elementary

Secondary

Federal

Total

300 Purchased Professional and Technical Services

340 Technical Services

66,572.36

390 Other Purchased Professional and Technical Services

6,401,998.23

Total Purchased Professional and Technical Services

\$6,468,570.59

500 Other Purchased Services

520 Insurance – General

2,482.00

Total Other Purchased Services

\$2,482.00

700 Property

752 Capital Equipment – Original and Additional

15,052.17

762 Capitalized Equipment - Replacement

85,699.24

Total Property

\$100,751.41

Total 4600 Existing Building Improvement Services

\$6,571,804.00

Other Capital Projects Fund (39)

5000 Other Expenditures and Financing Uses

Total

800 Other Objects

830 Interest 305,271.45

Total Other Objects \$305,271.45

900 Other Uses of Funds

910 Redemption of Principal 18,095,000.00

Total Other Uses of Funds \$18,095,000.00

Total 5000 Other Expenditures and Financing Uses \$18,400,271.45

Other Capital Projects Fund (39)

5100 Debt Service / Other Expenditures and Financing Uses	<u>Elementary</u>	<u>Secondary</u>	<u>Federal</u>	<u>Total</u>
800 <u>Other Objects</u>				
830 Interest				305,271.45
Total Other Objects				\$305,271.45
900 <u>Other Uses of Funds</u>				
910 Redemption of Principal				18,095,000.00
Total Other Uses of Funds				\$18,095,000.00
Total 5100 Debt Service / Other Expenditures and Financing Uses				\$18,400,271.45

LEA : 125237603 Radnor Township SD

Printed 1/5/2024 11:52:20 AM

Other Capital Projects Fund (39)

	<u>Elementary</u>	<u>Secondary</u>	<u>Federal</u>	<u>Total</u>
5120 Debt Service – Refunded Bonds				
800 Other Objects				
830 Interest				305,271.45
Total Other Objects				\$305,271.45
900 Other Uses of Funds				
910 Redemption of Principal				18,095,000.00
Total Other Uses of Funds				\$18,095,000.00
Total 5120 Debt Service – Refunded Bonds				\$18,400,271.45

	<u>General Fund(10)</u>	<u>Student Sponsored Activity Fund(21)</u>	<u>Public Purpose Trust(27)</u>	<u>Other Compt Approved (28)</u>	<u>Athletic / Activity(29)</u>
1000 Instruction					
1100 Regular Programs - Elementary / Secondary	43,783,099.50				
1200 Special Programs - Elementary / Secondary	14,943,855.78				
1300 Vocational Education	653,283.89				
1400 Other Instructional Programs - Elementary / Secondary	246,237.81				
1500 Nonpublic School Programs	44,623.67				
1600 Adult Education Programs	1,228,186.00				
1800 Pre-Kindergarten	64,384.55				
Total Instruction	\$60,963,671.20				
2000 Support Services					
2100 Support Services - Students	5,206,693.71				
2200 Support Services - Instructional Staff	4,497,016.13				
2300 Support Services - Administration	6,426,970.21				
2400 Support Services - Pupil Health	1,377,425.14				
2500 Support Services - Business	1,319,134.31				
2600 Operation and Maintenance of Plant Services	9,652,156.90				
2700 Student Transportation Services	5,327,166.30				
2800 Support Services - Central	2,330,892.10				
2900 Other Support Services	79,567.01				
Total Support Services	\$36,217,021.81				
3000 Operation of Non-Instructional Services					
3200 Student Activities	1,715,240.13				
3300 Community Services	1,000.42				36,575.00
Total Operation of Non-Instructional Services	\$1,716,240.55				\$36,575.00
4000 Facilities Acquisition, Construction and Improvement Services					
4300 Architecture and Engineering Services / Educational Specifications Development - Original and Additional					
4600 Existing Building Improvement Services	85,056.80				
Total Facilities Acquisition, Construction and Improvement Services	\$85,056.80				
5000 Other Expenditures and Financing Uses					
5100 Debt Service / Other Expenditures and Financing Uses	7,939,801.01				
5200 Interfund Transfers - Out	4,830,465.00				
Total Other Expenditures and Financing Uses	\$12,770,266.01				
TOTAL ACTUAL EXPENDITURES & OTHER FINANCING USES	\$111,752,256.37				\$36,575.00

	<u>Capital Reserve (690.1850)(31)</u>	<u>Capital Reserve (1431)(32)</u>	<u>Other Capital Projects Fund(39)</u>	<u>Debt Service(40)</u>	<u>Permanent(90)</u>
1000 Instruction					
1100 Regular Programs - Elementary / Secondary					
1200 Special Programs - Elementary / Secondary					
1300 Vocational Education					
1400 Other Instructional Programs - Elementary / Secondary					
1500 Nonpublic School Programs					
1600 Adult Education Programs					
1800 Pre-Kindergarten					
Total Instruction					
2000 Support Services					
2100 Support Services - Students			401,363.00		
2200 Support Services - Instructional Staff					
2300 Support Services - Administration			246,744.85		
2400 Support Services - Pupil Health					
2500 Support Services - Business					
2600 Operation and Maintenance of Plant Services		297,459.68			
2700 Student Transportation Services		1,091,791.00			
2800 Support Services - Central					
2900 Other Support Services					
Total Support Services		\$1,389,250.68	\$648,107.85		
3000 Operation of Non-Instructional Services					
3200 Student Activities					
3300 Community Services					
Total Operation of Non-Instructional Services					
4000 Facilities Acquisition, Construction and Improvement Services					
4300 Architecture and Engineering Services / Educational Specifications Development - Original and Additional			418,984.27		
4600 Existing Building Improvement Services		2,279,519.74	6,571,804.00		
Total Facilities Acquisition, Construction and Improvement Services		\$2,279,519.74	\$6,990,788.27		
5000 Other Expenditures and Financing Uses					
5100 Debt Service / Other Expenditures and Financing Uses			18,400,271.45		
5200 Interfund Transfers - Out					
Total Other Expenditures and Financing Uses			\$18,400,271.45		
TOTAL ACTUAL EXPENDITURES & OTHER FINANCING USES		\$3,668,770.42	\$26,039,167.57		

Total

1000 <u>Instruction</u>	
1100 Regular Programs - Elementary / Secondary	43,783,099.50
1200 Special Programs - Elementary / Secondary	14,943,855.78
1300 Vocational Education	653,283.89
1400 Other Instructional Programs - Elementary / Secondary	246,237.81
1500 Nonpublic School Programs	44,623.67
1600 Adult Education Programs	1,228,186.00
1800 Pre-Kindergarten	64,384.55
Total Instruction	\$60,963,671.20
2000 <u>Support Services</u>	
2100 Support Services - Students	5,608,056.71
2200 Support Services - Instructional Staff	4,497,016.13
2300 Support Services - Administration	6,673,715.06
2400 Support Services - Pupil Health	1,377,425.14
2500 Support Services - Business	1,319,134.31
2600 Operation and Maintenance of Plant Services	9,949,616.58
2700 Student Transportation Services	6,418,957.30
2800 Support Services - Central	2,330,892.10
2900 Other Support Services	79,567.01
Total Support Services	\$38,254,380.34
3000 <u>Operation of Non-Instructional Services</u>	
3200 Student Activities	1,715,240.13
3300 Community Services	37,575.42
Total Operation of Non-Instructional Services	\$1,752,815.55
4000 <u>Facilities Acquisition, Construction and Improvement Services</u>	
4300 Architecture and Engineering Services / Educational Specifications Development - Original and Additional	418,984.27
4600 Existing Building Improvement Services	8,936,380.54
Total Facilities Acquisition, Construction and Improvement Services	\$9,355,364.81
5000 <u>Other Expenditures and Financing Uses</u>	
5100 Debt Service / Other Expenditures and Financing Uses	26,340,072.46
5200 Interfund Transfers - Out	4,830,465.00
Total Other Expenditures and Financing Uses	\$31,170,537.46
TOTAL ACTUAL EXPENDITURES & OTHER FINANCING USES	\$141,496,769.36

LEA : 125237603 Radnor Township SD

Printed 1/5/2024 11:52:31 AM

PSERS Salary Data (Salary Data should relate to the General Fund only)

Amount Description	Amount
Total Salary Base for salaries subject to PSERS withholding	46,052,396.38
Total Federally Funded salaries subject to PSERS withholding	880,492.74
	<hr/>

Title I Expenditure Data

Amount Description	Amount
Expenditures Funded with Current Title I Funds	320,026.47
Expenditures Funded with Carry over Title I Funds	226,501.47
	<hr/>
Total Title I Expenditure Data	\$546,527.94
	<hr/>

Title IV Revenue Data

Amount Description	Amount
Revenue from Title IV-A-1: Student Support and Academic Enrichment Grants	20,450.79
Revenue from Title IV-B: 21st Century Community Learning Centers	
	<hr/>

Title V Revenue Data

Amount Description	Amount
Revenue from Title V-B-2: Rural and Low-Income School Programs	
Revenue from Title V-B-1: Small Rural School Achievement (Directly from the Federal Govt)	
	<hr/>

1.	<u>Current Special Education Expenditures within Function 1000</u> See list of exclusions in the note below.	13,247,865.37
2.	<u>Current Special Education Expenditures within Function 2000</u> See list of exclusions in the note below.	7,750,511.80
2A.	<u>Current Special Education Expenditures within Sub-Function 2100</u> This data should also be included in line 2 above. See list of exclusions in the note below.	3,012,533.00
2B.	<u>Current Special Education Expenditures within Sub-Function 2200</u> This data should also be included in line 2 above. See list of exclusions in the note below.	666,508.21
2C.	<u>Current Special Education Expenditures within Sub-Function 2700</u> This data should also be included in line 2 above. See list of exclusions in the note below.	677,928.60
3.	<u>Current Special Education Expenditures within Sub-Function 3100</u> See list of exclusions in the note below.	
4.	<u>Current Special Education Expenditures within Sub-Function 3200</u> See list of exclusions in the note below.	

Note: The Current Special Education Expenditure amounts for each line should be calculated as follows:

- * Include the total expenditures for special education costs from all governmental funds and the food service fund 51 for the function/sub-function requested
- * Exclude data from sub-functions: 1243,1450,1500,1600,1807,2280,2450,2750,2990
- * Exclude data from objects: 322,511,512,516,561,562,564,566,592,593,594,595,596,597,700,830,899

Benefits for Staff Relative to Collective Bargaining Agreements

	OBJECT	COVERED	NOT COVERED	TOTAL
10 General Fund				
	211 Medical Insurance	6,880,518.24		6,880,518.24
	212 Dental Insurance	354,812.24		354,812.24
	215 Eye Care Insurance			
	216 Prescription Insurance			
	271 Self-Insurance Medical Benefits			
	272 Self-Insurance Dental Benefits			
	275 Self-Insurance Eye Care Benefits	18,937.95		18,937.95
	276 Self-Insurance Prescription Benefits	2,714,251.97		2,714,251.97
	FUND TOTAL	\$9,968,520.40		\$9,968,520.40
50 Enterprise Fund				
	211 Medical Insurance	175,310.81		175,310.81
	212 Dental Insurance	6,184.86		6,184.86
	215 Eye Care Insurance			
	216 Prescription Insurance			
	271 Self-Insurance Medical Benefits			
	272 Self-Insurance Dental Benefits			
	275 Self-Insurance Eye Care Benefits	1,390.70		1,390.70
	276 Self-Insurance Prescription Benefits	54,611.38		54,611.38
	FUND TOTAL	\$237,497.75		\$237,497.75
60 Internal Service Fund	No Self Insurance data to report			
	211 Medical Insurance			
	212 Dental Insurance			
	215 Eye Care Insurance			
	216 Prescription Insurance			
	271 Self-Insurance Medical Benefits			
	272 Self-Insurance Dental Benefits			
	275 Self-Insurance Eye Care Benefits			
	276 Self-Insurance Prescription Benefits			
	FUND TOTAL			
Total of All Funds		\$10,206,018.15		\$10,206,018.15

LEA : 125237603 Radnor Township SD

Printed 1/5/2024 11:52:36 AM

Function	Special Education (Prior Year)	Nonspecial Education (Prior Year)	Total (Prior Year)	Special Education (Current Year)	Nonspecial Education (Current Year)	Total (Current Year)
2120 Guidance Services	285,256.65	1,701,776.74	1,987,033.39	323,988.62	1,675,279.22	1,999,267.84
2140 Psychological Services	158,108.03	947,420.13	1,105,528.16	179,192.10	926,565.69	1,105,757.79
2150 Speech Pathology and Audiology Services						
2160 Social Work Services	49,099.77	294,217.23	343,317.00	65,697.74	428,641.89	494,339.63
2260 Instruction and Curriculum Development Services	137,293.62	822,695.38	959,989.00	160,461.00	829,710.99	990,171.99
2350 Legal and Accounting Services	203,078.00	83,765.00	286,843.00	144,393.20	201,133.13	345,526.33
2420 Medical Services	858.09	5,141.91	6,000.00	1,053.35	5,446.65	6,500.00
2440 Nursing Services	368,569.95	1,062,119.55	1,430,689.50	202,398.33	1,168,526.81	1,370,925.14
2700 Student Transportation Services	852,186.45	4,386,417.91	5,238,604.36	717,952.41	4,600,213.59	5,318,166.00
Total	\$2,054,450.56	\$9,303,553.85	\$11,358,004.41	\$1,795,136.75	\$9,835,517.97	\$11,630,654.72

(PRINCIPAL AMOUNTS ONLY)

GOVERNMENTAL FUNDS/ ACTIVITIES

	Short-Term Borrowing	General Obligation Bonds/Notes	Authority Building Obligations	Leases, Other Right to Use Arrangements	Extended Term Financing Agreements	Other Long Term Debt/Liabilities	OPEB, Comp Abs, Net Pension Liab	Total
1. Debt at Beginning of Fiscal Year		93,277,000.00	5,065,000.00	635,180.00		2,975,673.00	139,722,787.27	241,675,640.27
2. Additional Debt Incurred During Year		18,013,000.00		765,087.00			3,445,480.64	22,223,567.64
3. Retirements and Repayments		22,430,000.00		371,789.40		277,928.00	2,587,931.00	25,667,648.40
4. Debt at End of Fiscal Year		88,860,000.00	5,065,000.00	1,028,477.60		2,697,745.00	140,580,336.91	238,231,559.51
5. Accreted Interest at End Of Fiscal Year								
6. Total Debt and Accreted Interest		88,860,000.00	5,065,000.00	1,028,477.60		2,697,745.00	140,580,336.91	238,231,559.51
7. Current Portion P&I - Due within 1 year		9,787,166.55	278,812.20	479,874.00		277,928.00		10,823,780.75
8. Interest Paid during current fiscal year		2,800,081.54	278,812.20	26,941.91				3,105,835.65

(PRINCIPAL AMOUNTS ONLY)

PROPRIETARY FUNDS

	Short-Term Borrowing	General Obligation Bonds/Notes	Authority Building Obligations	Leases, Other Right to Use Arrangements	Extended Term Financing Agreements	Other Long Term Debt/Liabilities	OPEB, Comp Abs, Net Pension Liab	Total
1. Debt at Beginning of Fiscal Year							1,481,648.00	1,481,648.00
2. Additional Debt Incurred During Year							55,124.00	55,124.00
3. Retirements and Repayments								
4. Debt at End of Fiscal Year							1,536,772.00	1,536,772.00
5. Accreted Interest at End Of Fiscal Year								
6. Total Debt and Accreted Interest							1,536,772.00	1,536,772.00
7. Current Portion P&I - Due within 1 year								
8. Interest Paid during current fiscal year								

Total Principal and Interest Payments Made by Your School - All Funds

Function	Fund		Principal (910)	Principal (920)	Interest (830)	Total (Principal +Interest)	Misc Other Uses (990)
5110	10	General Fund	4,335,000.00	277,928.00	2,923,893.76	7,536,821.76	
5110	20	Special Revenue Funds					
5110	30	Capital Projects Funds					
5110	40	Debt Service Fund					
5110	90	Permanent Fund					
5120	10	General Fund					
5120	20	Special Revenue Funds					
5120	30	Capital Projects Funds	18,095,000.00		305,271.45	18,400,271.45	
5120	40	Debt Service Fund					
5140	10	General Fund	371,789.40		26,941.91	398,731.31	
5140	20	Special Revenue Funds					
5140	30	Capital Projects Funds					
5140	40	Debt Service Fund					
5140	90	Permanent Fund					
Total Debt Payments - Governmental Funds			\$22,801,789.40	\$277,928.00	\$3,256,107.12	\$26,335,824.52	

Function	Fund		Principal (910)	Principal (920)	Interest (830)	Total (Principal +Interest)
5110	50	Enterprise Fund				
5110	60	Internal Service Fund				
5120	50	Enterprise Fund				
5120	60	Internal Service Fund				
5140	50	Enterprise Fund				
5140	60	Internal Service Fund				

Total Debt Payments - Proprietary Funds

Debt Details
Governmental Funds/ Activities

Debt Category	Debt Issue Date (MM/YYYY)	Principal Amounts Only				Current Portion Due Within One Year (Principal and Interest)	Interest Paid During Fiscal Year
		Debt at Beginning of Fiscal Year	Additions	Reductions / Repayments	Debt at End of Fiscal Year		
General Obligation Bonds/Notes – CIB	03/2023		6,975,000.00		6,975,000.00	1,108,218.75	
General Obligation Bonds/Notes – CIB	07/2022		11,038,000.00	1,428,000.00	9,610,000.00	1,615,335.39	187,335.39
General Obligation Bonds/Notes – CIB	04/2021	25,525,000.00		5,000.00	25,520,000.00	983,262.50	978,262.50
General Obligation Bonds/Notes – CIB	11/2019	16,875,000.00		235,000.00	16,640,000.00	763,100.00	528,100.00
General Obligation Bonds/Notes – CIB	05/2019	9,020,000.00		75,000.00	8,945,000.00	248,375.00	323,375.00
General Obligation Bonds/Notes – CIB	05/2019	9,935,000.00		5,000.00	9,930,000.00	281,932.50	276,932.50
General Obligation Bonds/Notes – CIB	11/2017	9,702,000.00		527,000.00	9,175,000.00	714,826.15	187,826.15
General Obligation Bonds/Notes – CIB	11/2017	740,000.00		740,000.00		746,475.00	6,475.00
General Obligation Bonds/Notes – CIB	02/2015	8,180,000.00		8,180,000.00		987,700.00	167,700.00
General Obligation Bonds/Notes – CIB	11/2014	5,315,000.00		4,435,000.00	880,000.00	184,837.50	104,837.50
General Obligation Bonds/Notes – CIB	07/2014	6,380,000.00		6,380,000.00		1,693,866.26	
General Obligation Bonds/Notes – CIB	1/2016	1,605,000.00		420,000.00	1,185,000.00	459,237.50	39,237.50
Authority Building Obligations – CIB	11/2011	3,565,000.00			3,565,000.00	181,387.20	181,387.20
Authority Building Obligations – CIB	11/2010	1,500,000.00			1,500,000.00	97,425.00	97,425.00
Leases and Other Right to Use Arrangements		635,180.00	765,087.00	371,789.40	1,028,477.60	479,874.00	26,941.91
Other Long Term Debt/Liabilities		2,975,673.00		277,928.00	2,697,745.00	277,928.00	
Compensated Absences		695,970.27	3,681.64		699,651.91		
Other Post-Employment Benefits (OPEB)		3,675,318.00		2,587,931.00	1,087,387.00		
Net Pension Liability		135,351,499.00	3,441,799.00		138,793,298.00		
Totals for Debt Entered:		\$241,675,640.27	\$22,223,567.64	\$25,667,648.40	\$238,231,559.51	\$10,823,780.75	\$3,105,835.65

Bond Details
Proprietary Funds

Debt Category	Debt Issue Date (MM/YYYY)	Principal Amounts Only				Current Portion Due Within One Year (Principal and Interest)	Interest Paid During Fiscal Year
		Debt at Beginning of Fiscal Year	Additions	Reductions / Repayments	Debt at End of Fiscal Year		
Net Pension Liability		1,402,210.00	27,301.00		1,429,511.00		
Other Post-Employment Benefits (OPEB)		79,438.00	27,823.00		107,261.00		
Totals for Debt Entered:		\$1,481,648.00	\$55,124.00		\$1,536,772.00		

General Fund (10)

Section 1: Tuition/Purchased Services as Reported within Expenditure Detail

	Amount
Tuition Reported in General Fund Expenditures 1000-560	5,689,488.59
Purchased Services in General Fund Expenditures 1000-594 and 1000-597	1,022.09
Section 1 Total	\$5,690,510.68

Section 2: Tuition Paid to Institution Types During Fiscal Year

	Tuition Paid For Nonspecial Education	Tuition Paid For Special Education	Total
1 1306 Institutions			
2 Institutionalized Children's Programs		1,022.09	1,022.09
3 Juveniles Incarcerated in Adult Facilities			
4 Residential Treatment Facilities		2,898,101.69	2,898,101.69
5 Other Local Education Agencies		5,359.48	5,359.48
6 Brick and Mortar Charter Schools	36,209.86		36,209.86
7 Cyber Charter Schools	162,116.19	102,219.65	264,335.84
8 Career and Technology Centers	653,283.89		653,283.89
9 Approved Private Schools		604,011.83	604,011.83
10 PA Chartered Schools for the Deaf and Blind			
11 Private Residential Rehabilitative Institutions			
12 Juvenile Detention Centers			
13 Special Program Jointures	1,228,186.00		1,228,186.00
14 Other Tuition Not Included Elsewhere In This Section			
Section 2 Total	\$2,079,795.94	\$3,610,714.74	\$5,690,510.68

Food Service / Cafeteria Operations Fund (51)

3000 Operation of Non-Instructional Services

	<u>Total</u>
100 Personnel Services – Salaries	
100 Personnel Services – Salaries	534,607.26
Total Personnel Services – Salaries	\$534,607.26
200 Personnel Services – Employee Benefits	
210 Group Insurance – Contracted Provider	181,495.67
220 Social Security Contributions	39,454.23
230 PSERS Retirement Contributions	29,278.36
260 Workers’ Compensation	4,805.00
270 Group Insurance – Self-Insurance	56,002.08
291 Other Retirement Plans	325.00
292 Health Savings Accounts	15,273.28
Total Personnel Services – Employee Benefits	\$326,633.62
300 Purchased Professional and Technical Services	
330 Other Professional Services	1,067.00
Total Purchased Professional and Technical Services	\$1,067.00
400 Purchased Property Services	
410 Cleaning Services	44,898.67
430 Repairs and Maintenance Services	30,805.25
Total Purchased Property Services	\$75,703.92
500 Other Purchased Services	
570 Food Service Management	54,000.00
580 Travel	2,326.84
Total Other Purchased Services	\$56,326.84
600 Supplies	
610 General Supplies	65,304.55
630 Food	1,091,416.86
Total Supplies	\$1,156,721.41
700 Property	
740 Depreciation	37,318.00
Total Property	\$37,318.00
Total 3000 Operation of Non-Instructional Services	\$2,188,378.05

Food Service / Cafeteria Operations Fund (51)

	<u>Elementary</u>	<u>Secondary</u>	<u>Federal</u>	<u>Total</u>
3100 Food Services				
100 Personnel Services – Salaries				
100 Personnel Services – Salaries				534,607.26
Total Personnel Services – Salaries				\$534,607.26
200 Personnel Services – Employee Benefits				
210 Group Insurance – Contracted Provider				181,495.67
220 Social Security Contributions				39,454.23
230 PSERS Retirement Contributions				29,278.36
260 Workers' Compensation				4,805.00
270 Group Insurance – Self-Insurance				56,002.08
291 Other Retirement Plans				325.00
292 Health Savings Accounts				15,273.28
Total Personnel Services – Employee Benefits				\$326,633.62
300 Purchased Professional and Technical Services				
330 Other Professional Services				1,067.00
Total Purchased Professional and Technical Services				\$1,067.00
400 Purchased Property Services				
410 Cleaning Services				44,898.67
430 Repairs and Maintenance Services				30,805.25
Total Purchased Property Services				\$75,703.92
500 Other Purchased Services				
570 Food Service Management				54,000.00
580 Travel				2,326.84
Total Other Purchased Services				\$56,326.84
600 Supplies				
610 General Supplies				65,304.55
630 Food				1,091,416.86
Total Supplies				\$1,156,721.41
700 Property				
740 Depreciation				37,318.00
Total Property				\$37,318.00
Total 3100 Food Services				\$2,188,378.05

Internal Service Fund (60)

2000 Support Services

Total

200 Personnel Services – Employee Benefits

210 Group Insurance – Contracted Provider

12,479,503.00

Total Personnel Services – Employee Benefits

\$12,479,503.00

300 Purchased Professional and Technical Services

330 Other Professional Services

1,022,432.00

Total Purchased Professional and Technical Services

\$1,022,432.00

Total 2000 Support Services

\$13,501,935.00

Internal Service Fund (60)

	<u>Elementary</u>	<u>Secondary</u>	<u>Federal</u>	<u>Total</u>
2300 Support Services – Administration				
200 Personnel Services – Employee Benefits				
210 Group Insurance – Contracted Provider				12,479,503.00
Total Personnel Services – Employee Benefits				\$12,479,503.00
300 Purchased Professional and Technical Services				
330 Other Professional Services				1,022,432.00
Total Purchased Professional and Technical Services				\$1,022,432.00
Total 2300 Support Services – Administration				\$13,501,935.00

Internal Service Fund (60)

2340 Staff Relations and Negotiations Services

Elementary

Secondary

Federal

Total

200 Personnel Services – Employee Benefits

210 Group Insurance – Contracted Provider

12,479,503.00

Total Personnel Services – Employee Benefits

\$12,479,503.00

300 Purchased Professional and Technical Services

330 Other Professional Services

1,022,432.00

Total Purchased Professional and Technical Services

\$1,022,432.00

Total 2340 Staff Relations and Negotiations Services

\$13,501,935.00

	<u>Food Service(51)</u>	<u>Child Care Operations(52)</u>	<u>Other Enterprise(58)</u>	<u>Internal Service(60)</u>	<u>Total</u>
2000 <u>Support Services</u>					
2300 Support Services - Administration				13,501,935.00	13,501,935.00
Total Support Services				\$13,501,935.00	\$13,501,935.00
3000 <u>Operation of Non-Instructional Services</u>					
3100 Food Services	2,188,378.05				2,188,378.05
Total Operation of Non-Instructional Services	\$2,188,378.05				\$2,188,378.05
TOTAL ACTUAL EXPENDITURES & OTHER FINANCING USES	\$2,188,378.05			\$13,501,935.00	\$15,690,313.05

LEA : 125237603 Radnor Township SD

Printed 1/5/2024 11:52:50 AM

Fund	School	School Number	Local Personnel	Local Nonpersonnel	State Personnel	State Nonpersonnel	Federal Personnel	Federal Nonpersonnel	Total	Explanation
10										
	Ithan El Sch	6510	9,945,703.02	1,415,359.31	5,466.09	28.29	172,968.01	119,991.54	11,659,516.26	
	Radnor El Sch	7697	11,295,519.42	1,540,734.43	5,895.01	30.51	186,540.95	129,407.38	13,158,127.70	
	Radnor MS	6511	18,600,596.32	2,744,714.73	9,106.48	47.13	220,734.80	165,944.25	21,741,143.71	
	Radnor SHS	1921	25,569,251.61	4,446,161.07	12,394.93	64.15	252,015.26	205,476.81	30,485,363.83	
	Wayne El Sch	6512	11,468,519.77	1,569,620.18	6,169.97	31.93	290,840.31	135,443.17	13,470,625.33	
Total			76,879,590.14	11,716,589.72	39,032.48	202.01	1,123,099.33	756,263.15	90,514,776.83	