

LEA Name : Radnor Township SD  
Address : 135 S Wayne Ave  
Wayne , PA 19087

County : Delaware  
AUN Number : 125237603  
LEA Type : SD

## Annual Financial Report Accuracy Certification Statement

For Fiscal Year Ending  
**6/30/2024**

Pennsylvania Department of Education  
&  
Office of Comptroller Operations

PDE-2056: Intermediate Unit  
PDE-2057: School District, AVTS/CTC, Charter School,  
and Special Program Jointure

**CERTIFICATION: By signing this page I agree that the electronic data submitted is a complete and accurate statement of the financial operations and status of the local education agency for the fiscal year. It has been prepared in accordance with generally accepted accounting principles and established Commonwealth of PA reporting guidelines.**



Chief School Administrator Signature

12/27/24

Date



Board Secretary Signature

12/26/24

Date

Brian Pawling

Contact Person

brian.pawling@rtsd.org

Contact Person E-mail Address

(610)688-8100 Ext :6134

Contact Person Telephone Number

Contact Person Fax Number

**Audit Certification**  
**Annual Financial Report:**  
For Fiscal Year Ending **6/30/2024**  
**(Pursuant to PA School Code Section 218(b))**

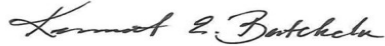
LEA Name : Radnor Township SD  
AUN Number : 125237603  
County : Delaware

<b>Audit Certification Due:</b> 12/31/2024
---

This certification is applicable to the Annual Financial Report data submitted through the Consolidated Financial Reporting System (CFRS).

CERTIFICATION: By signing this page I agree that the financial statements of the school have been properly audited as noted above pursuant to Article XXIV, and in the auditor's professional opinion, the Annual Financial Report (PDE-2057) submitted through CFRS is materially consistent with the audited financial statements.

Chief School Administrator

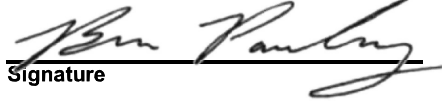


12/27/24

Signature

Date

Board Secretary



12/26/24

Signature

Date

Brian Pawling

Contact Person

brian.pawling@rtsd.org

Contact Person E-mail Address

(610)688-8100

Ext :6134

Contact Person Telephone Number

Contact Person Fax Number

# Radnor Township School District Administrative Organizational Chart 2023-2024

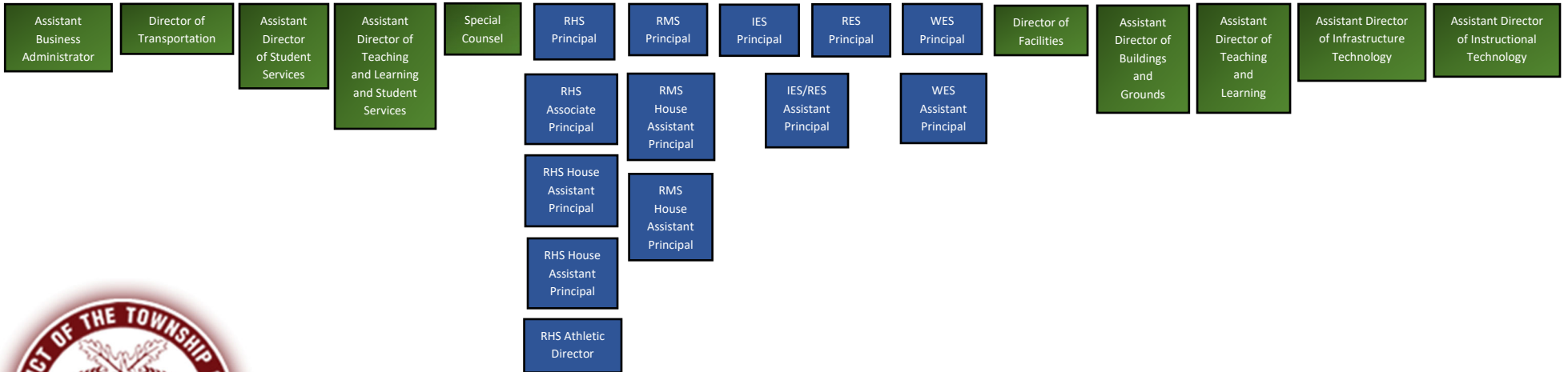
Board of School Directors

Superintendent

Assistant to the Superintendent  
District Administration

Assistant to the Superintendent  
Teaching and Learning

Business Administrator    Director of Student Services    Director of Human Resources    Director of Communications    Director of Buildings and Grounds    Director of Technology, Innovation & Instructional Design



**KEY**  
 School Board  
 Administrative Cabinet  
 Administrators  
 Building Administrators



Book	Radnor Township School District Policy Manual
Section	600 Finances
Title	Capital Assets
Code	622
Status	Active
Adopted	August 26, 2008
Last Revised	March 28, 2023

### **Purpose**

The Board recognizes the need to implement the required accounting and financial reporting standards stipulated by the Pennsylvania Department of Education.

The primary objectives of implementing the Governmental Accounting Standards Board (GASB) Statement 34 are to assure compliance with state requirements, and properly account for both the financial and economic resources of the District.

### **Authority**

Participation of the District in any such activity shall be in accordance with Board policy.[\[1\]](#)[\[2\]](#)

### **Definition**

**Capital Assets** include land, improvements to land, easements, buildings, building improvement, vehicles, machinery, equipment, works of art and historical treasurers, and infrastructures. Capital assets are both tangible and intangible assets used in operations and have initial useful lives extending beyond a single reporting period. Equipment will not change its original shape, appearance or character with use and it can be expected to last more than one (1) year with reasonable care and maintenance.

### **Guidelines**

#### **Purchased Capital Assets**

Purchased capital assets greater than \$5,000, or which have a useful life of greater than five (5) years, shall be tagged and recorded electronically at their historical/original cost within the District's Capital Asset Inventory System. The cost of capital assets shall include capitalized interest and ancillary charges necessary to place the asset into service. Ancillary charges include freight, site preparation and professional fees.

Capital assets shall be depreciated over their useful lives as determined for each asset class. Inexhaustible capital assets such as land and land improvements shall not be depreciated.

If determining historical costs is not practical due to inadequate records, reporting shall be based on estimates of original cost at the date of construction or purchase.

Capital asset records must include the acquisition date, cost, useful life, depreciation method and salvage value for capital asset classifications and groups.

Individual items less than \$5,000 but purchased in the aggregate and totaling \$10,000 or more, shall be capitalized and depreciated as a unit over the useful life for that asset class.

Due to ongoing changes in technology computer software is considered a supply and is expensed at the time of purchase.

**Depreciation Expense**

Depreciation expense should be reported in the statement of activities. Depreciation expense that can be specifically identified with a function should be included as a direct expense. Depreciations expense for shared facilities should be ratable included in direct expenses for each function.

Depreciation is allocated to expense in a systematic and rational manner. The straight-line method of depreciation will be used.

Depreciation may be calculated for a class of assets, a network of assets or individual assets.

**Disposals and Donations**

Records of all disposals and donations of District assets shall be maintained in accordance with applicable law or Board policy.

Sale of Capital Assets – When capital assets are sold, a calculation of gain or loss on disposal is required. The calculation is based upon the amount of proceeds received less the net book value (cost less accumulated depreciation taken on the asset.). All sales or donations of Capital Assets shall be approved by a majority vote of the Board of School Directors. [3]

Trade-ins - The value given for a trade-in is part of the cost of the newly acquired asset. The costs and accumulated depreciation of the trade-in asset must be removed from the books. Any gain or loss resulting from the disposition of the asset will be recognized as a gain or loss on disposal.

Electronic Equipment - records shall be maintained throughout the life of the asset and any disposal shall be reported to the Business Office.

Assets Purchased With Federal Funds - shall be maintained and disposed of in accordance with any guidelines issued by the Federal awarding agency.

**Assets Acquired by Capital Lease**

Assets acquired by capital lease shall be recorded at the net present value of the future minimum lease payments. A corresponding liability shall be established at this time. Assets acquired under the terms of capital leases shall be depreciated over the useful lives designated for the asset class.

**Assets Acquired by Debt Proceeds**

In order to associate debt with acquired assets and to avoid net asset deficits, any asset that has been acquired with debt proceeds shall be capitalized, regardless of the cost of the asset.

**Delegation of Responsibility**

The responsibility to coordinate the compilation and preparation of all information necessary to implement this policy is delegated to the Business Administrator or designee.

The Business Administrator or designee shall be responsible for implementing the necessary procedures to establish and maintain a capital asset inventory.

Legal                    1. 24 P.S. 218  
                              2. 24 P.S. 613

Governmental Accounting Standards Board, Statement No. 34  
Pol. 706  
Pol. 706.1

<u>Val Number</u>	<u>Description</u>	<u>Justification</u>
12045	REG - Athletic Fund 29: Local Revenue (6000) must exceed total of all other funding sources (7000, 8000, and 9000). Correct or enter a justification.  REG 6000, Fund 29 : \$34,432.79 REG 7000, 8000, 9000 - Fund 29: \$45,000.00	Transfer from the GF for pool proceeds, the pool was closed during renovations and only recently reopened.
30149	Revenue Detail: An amount has been reported in revenue code 6839. Any revenue received or passed through from another PA LEA (Intermediate Units, School Districts, Charter Schools, and Career Technology Centers) should be reported in the most applicable account(s) 6831, 6832, 6833, 6834, 6836, and/or 6838. Please confirm within the justification that no pass through funds from other LEAs are included in 6839.  Governmental Fund Revenue, Account 6839: \$25,000.00	The funds coded to 6839 are PHEAA Grant Pass-Thru funds
30214	New bond proceeds have been reported in governmental funds. An interfund transfer into Capital Reserve Fund 32 has also been reported. Note that bond proceeds are an unallowable source of funding in fund 32 per municipal code restrictions. Transfers of bond proceeds of any type into fund 32 are prohibited. Please confirm that no bond proceeds have been transferred into Fund 32, or correct the AFR data.  Governmental Fund Revenue, Account 9110: \$9,380,000.00 Fund 32 Revenue, Account 9310: \$5,075,000.00	The transfers are from the General Fund, both board approved and are not from bond proceeds
42420	Expenditure Detail: Total current year 2700-513 expenditure varies from prior year by 10%. Correct the data or enter a justification.  2700-513, AFR Exp Detail: \$22,899.24 2700-513, PY AFR Amount: \$34,920.67	The district used less outsource contracted carriers, due to hiring additional in-house drivers.
50077	SOIN: Expenditures have been reported in Functions 5110 or 5120, Object 920 representing Authority Building Obligation principal payments however, no reductions to ABO debt have been reported on the SOIN.  Expenditure Detail, Function 5110 and 5120, Object 920: \$392,340.00 SOIN, Authority Building Obligation Reductions: \$0.00	Moved DCCC obligations from Auth Bldg Obl to OLTD on the SOIN per pde
50450	SESS - 2350 Legal and Accounting Services: SESS Schedule amounts for Special Education vary from prior year by 40% or more. Correct the data or enter a justification.  SESS Schedule 2350: \$47,311.64 Prior Year SESS Schedule 2350: \$144,393.20	The data is correct, we used less contracted legal services for our Special Education in 2023-2024

Amounts Expressed in Whole Dollars

	<u>General Fund</u> <u>(10)</u>	<u>Student Sponsored</u> <u>Activity Fund</u> <u>(21)</u>	<u>Public Purpose Trust</u> <u>(27)</u>	<u>Other Compt Approved</u> <u>(28)</u>	<u>Athletic / Activity</u> <u>(29)</u>
<b>Assets And Deferred Outflows Of Resources</b>					
<b>Assets</b>					
0100 Cash and Cash Equivalents	42,876,052				65,272
0110 Investments	4,526,661				
0120 Taxes Receivable	1,683,856				
0130 Due From Other Funds	88,410				
0141 Due From Other Governments					
0142 State Revenue Receivable	3,643,125				
0143 Federal Revenue Receivable	1,225,348				
0145 Other Intergovernmental Revenue Receivable					
0146 Due from Primary Government					
0147 Due from Component Unit					
0150 Other Receivables	853,887				13,095
0170 Inventories					
0180 Prepaid Expenses (Expenditures)	6,413				
0190 Other Current Assets					
<b>Total Assets</b>	<b>\$54,903,752</b>				<b>\$78,367</b>
0910 Deferred Outflows of Resources					
<b>Total Assets And Deferred Outflows Of Resources</b>	<b>\$54,903,752</b>				<b>\$78,367</b>

Amounts Expressed in Whole Dollars

	<u>Capital Reserve (690.</u> <u>1850)</u> <u>(31)</u>	<u>Capital Reserve (1431)</u> <u>(32)</u>	<u>Other Capital Projects</u> <u>Fund</u> <u>(39)</u>	<u>Debt Service</u> <u>(40)</u>	<u>Permanent</u> <u>(90)</u>
<b>Assets And Deferred Outflows Of Resources</b>					
<b>Assets</b>					
0100 Cash and Cash Equivalents		8,425,282	8,612,542	60,616	
0110 Investments		1,345,842		3,221,122	
0120 Taxes Receivable					
0130 Due From Other Funds		3,498,192			
0141 Due From Other Governments					
0142 State Revenue Receivable					
0143 Federal Revenue Receivable					
0145 Other Intergovernmental Revenue Receivable					
0146 Due from Primary Government					
0147 Due from Component Unit					
0150 Other Receivables		388,385			
0170 Inventories					
0180 Prepaid Expenses (Expenditures)					
0190 Other Current Assets					
<b>Total Assets</b>		<b>\$13,657,701</b>	<b>\$8,612,542</b>	<b>\$3,281,738</b>	
0910 Deferred Outflows of Resources					
<b>Total Assets And Deferred Outflows Of Resources</b>		<b>\$13,657,701</b>	<b>\$8,612,542</b>	<b>\$3,281,738</b>	

Amounts Expressed in Whole Dollars

**Total Governmental Funds**

**Assets And Deferred Outflows Of Resources**

<b>Assets</b>	
0100 Cash and Cash Equivalents	60,039,764
0110 Investments	9,093,625
0120 Taxes Receivable	1,683,856
0130 Due From Other Funds	3,586,602
0141 Due From Other Governments	
0142 State Revenue Receivable	3,643,125
0143 Federal Revenue Receivable	1,225,348
0145 Other Intergovernmental Revenue Receivable	
0146 Due from Primary Government	
0147 Due from Component Unit	
0150 Other Receivables	1,255,367
0170 Inventories	
0180 Prepaid Expenses (Expenditures)	6,413
0190 Other Current Assets	
<b>Total Assets</b>	<b>\$80,534,100</b>
0910 Deferred Outflows of Resources	
<b>Total Assets And Deferred Outflows Of Resources</b>	<b>\$80,534,100</b>

Amounts Expressed in Whole Dollars

	<u>General Fund</u> <u>(10)</u>	<u>Student Sponsored</u> <u>Activity Fund</u> <u>(21)</u>	<u>Public Purpose Trust</u> <u>(27)</u>	<u>Other Compt Approved</u> <u>(28)</u>	<u>Athletic / Activity</u> <u>(29)</u>
<b>Liabilities And Deferred Inflows Of Resources And Fund Balances</b>					
<b>Liabilities</b>					
0400 Due to Other Funds	3,500,000				
0411 Due to Other Governments					
0412 Due to Primary Government					
0413 Due to Component Unit					
0420 Accounts Payable	1,504,839				19,225
0430 Contracts Payable					
0440 Current Portion of Long-Term Debt					
0450 Short-Term Payables					
0461 Accrued Salaries and Benefits	12,613,762				
0462 Payroll Deductions and Withholding					
0480 Unearned Revenues					
0490 Other Current Liabilities	641,998				
<b>Total Liabilities</b>	<b>\$18,260,599</b>				<b>\$19,225</b>
0950 Deferred Inflows of Resources	1,518,099				
<b>Fund Balances</b>					
0810 Nonspendable Fund Balance	6,413				
0820 Restricted Fund Balance					
0830 Committed Fund Balance	25,517,876				59,142
0840 Assigned Fund Balance					
0850 Unassigned Fund Balance	9,600,765				
<b>Total Fund Balances</b>	<b>\$35,125,054</b>				<b>\$59,142</b>
<b>Total Liabilities, Deferred Inflows Of Resources And Fund Balances</b>	<b>\$54,903,752</b>				<b>\$78,367</b>

Amounts Expressed in Whole Dollars

<u>Capital Reserve (690.</u>	<u>Capital Reserve (1431)</u>	<u>Other Capital Projects</u>	<u>Debt Service</u>	<u>Permanent</u>
<u>1850)</u>	<u>(32)</u>	<u>Fund</u>	<u>(40)</u>	<u>(90)</u>
<u>(31)</u>		<u>(39)</u>		

**Liabilities And Deferred Inflows Of Resources And Fund Balances**

<b>Liabilities</b>				
0400 Due to Other Funds			391,453	
0411 Due to Other Governments				
0412 Due to Primary Government				
0413 Due to Component Unit				
0420 Accounts Payable	1,590,362		22,009	
0430 Contracts Payable				
0440 Current Portion of Long-Term Debt				
0450 Short-Term Payables				
0461 Accrued Salaries and Benefits				
0462 Payroll Deductions and Withholding				
0480 Unearned Revenues				
0490 Other Current Liabilities				
<b>Total Liabilities</b>	<b>\$1,590,362</b>		<b>\$413,462</b>	
0950 Deferred Inflows of Resources				
<b>Fund Balances</b>				
0810 Nonspendable Fund Balance				
0820 Restricted Fund Balance	12,067,339		8,199,080	3,281,738
0830 Committed Fund Balance				
0840 Assigned Fund Balance				
0850 Unassigned Fund Balance				
<b>Total Fund Balances</b>	<b>\$12,067,339</b>		<b>\$8,199,080</b>	<b>\$3,281,738</b>
<b>Total Liabilities, Deferred Inflows Of Resources And Fund Balances</b>	<b>\$13,657,701</b>		<b>\$8,612,542</b>	<b>\$3,281,738</b>

Amounts Expressed in Whole Dollars

**Total Governmental Funds**

**Liabilities And Deferred Inflows Of Resources And Fund Balances**

**Liabilities**

0400 Due to Other Funds	3,891,453
0411 Due to Other Governments	
0412 Due to Primary Government	
0413 Due to Component Unit	
0420 Accounts Payable	3,136,435
0430 Contracts Payable	
0440 Current Portion of Long-Term Debt	
0450 Short-Term Payables	
0461 Accrued Salaries and Benefits	12,613,762
0462 Payroll Deductions and Withholding	
0480 Unearned Revenues	
0490 Other Current Liabilities	641,998

**Total Liabilities \$20,283,648**

0950 Deferred Inflows of Resources	1,518,099
------------------------------------	-----------

**Fund Balances**

0810 Nonspendable Fund Balance	6,413
0820 Restricted Fund Balance	23,548,157
0830 Committed Fund Balance	25,577,018
0840 Assigned Fund Balance	
0850 Unassigned Fund Balance	9,600,765

**Total Fund Balances \$58,732,353**

**Total Liabilities, Deferred Inflows Of Resources And Fund Balances \$80,534,100**

Amounts Expressed in Whole Dollars	<u>General Fund</u> <u>(10)</u>	<u>Student Sponsored</u> <u>Activity Fund</u> <u>(21)</u>	<u>Public Purpose Trust</u> <u>(27)</u>	<u>Other Compt Approved</u> <u>(28)</u>	<u>Athletic / Activity</u> <u>(29)</u>
<b>Revenues</b>					
6000 Revenue from Local Sources	99,979,744				34,433
7000 Revenue from State Sources	17,791,702				
8000 Revenue from Federal Sources	1,855,072				
<b>Total Revenues</b>	<b>\$119,626,518</b>				<b>\$34,433</b>
<b>Expenditures</b>					
1000 Instruction	63,558,150				
2000 Support Services	37,894,184				
3000 Operation of Non-Instructional Services	1,873,234				39,490
4000 Facilities Acquisition, Construction and Improvement Services	27,585				
5110 Debt Service	7,951,685				
5130 Refund of Prior Year Revenues / Receipts	611,905				
5140 Leases and Other Right-to-Use Arrangements	398,770				
<b>Total Expenditures</b>	<b>\$112,315,513</b>				<b>\$39,490</b>
<b>Excess (Deficiency) Of Revenues Over Expenditures</b>	<b>\$7,311,005</b>				<b>(\$5,057)</b>
<b>Other Financing Sources (Uses)</b>					
9110 Face Value of Bonds Issued					
9120 Proceeds from Refunding of Bonds					
9130 Bond Premiums					
9200 Proceeds from Extended Term Financing, Leases, and Other Right-to-Use Arrangements					
9300 Interfund Transfers - IN					45,000
9400 Sale of or Compensation for Loss of Fixed Assets	12,283				
9710 Transfers from Component Units					
9720 Transfers from Primary Governments					
9910 Other Financing Sources Not Listed in the 9000 Series					
9990 Insurance Recoveries	30,544				
5120 Debt Service – Refunded Bonds					
5150 Bond Discounts					
5200 Interfund Transfers – Out	5,401,389				
5300 Transfers Out to Component Units/Primary Governments					
<b>Total Other Financing Sources (Uses)</b>	<b>(\$5,358,562)</b>				<b>\$45,000</b>

Amounts Expressed in Whole Dollars	<u>Capital Reserve (690.1850)</u> <u>(31)</u>	<u>Capital Reserve (1431)</u> <u>(32)</u>	<u>Other Capital Projects</u> <u>Fund</u> <u>(39)</u>	<u>Debt Service</u> <u>(40)</u>	<u>Permanent</u> <u>(90)</u>
<b>Revenues</b>					
6000 Revenue from Local Sources		301,790	275,666	57,083	
7000 Revenue from State Sources					
8000 Revenue from Federal Sources					
<b>Total Revenues</b>		<b>\$301,790</b>	<b>\$275,666</b>	<b>\$57,083</b>	
<b>Expenditures</b>					
1000 Instruction					
2000 Support Services		431,976	169,904		
3000 Operation of Non-Instructional Services					
4000 Facilities Acquisition, Construction and Improvement Services		2,198,589	1,523,850		
5110 Debt Service					
5130 Refund of Prior Year Revenues / Receipts					
5140 Leases and Other Right-to-Use Arrangements					
<b>Total Expenditures</b>		<b>\$2,630,565</b>	<b>\$1,693,754</b>		
<b>Excess (Deficiency) Of Revenues Over Expenditures</b>		<b>(\$2,328,775)</b>	<b>(\$1,418,088)</b>	<b>\$57,083</b>	
<b>Other Financing Sources (Uses)</b>					
9110 Face Value of Bonds Issued			9,380,000		
9120 Proceeds from Refunding of Bonds					
9130 Bond Premiums			217,585		
9200 Proceeds from Extended Term Financing, Leases, and Other Right-to-Use Arrangements					
9300 Interfund Transfers - IN		5,075,000		281,389	
9400 Sale of or Compensation for Loss of Fixed Assets					
9710 Transfers from Component Units					
9720 Transfers from Primary Governments					
9910 Other Financing Sources Not Listed in the 9000 Series					
9990 Insurance Recoveries					
5120 Debt Service – Refunded Bonds					
5150 Bond Discounts					
5200 Interfund Transfers – Out					
5300 Transfers Out to Component Units/Primary Governments					
<b>Total Other Financing Sources (Uses)</b>		<b>\$5,075,000</b>	<b>\$9,597,585</b>	<b>\$281,389</b>	

Amounts Expressed in Whole Dollars	<u>Total Governmental Funds</u>
<b>Revenues</b>	
6000 Revenue from Local Sources	100,648,716
7000 Revenue from State Sources	17,791,702
8000 Revenue from Federal Sources	1,855,072
<b>Total Revenues</b>	<b>\$120,295,490</b>
<b>Expenditures</b>	
1000 Instruction	63,558,150
2000 Support Services	38,496,064
3000 Operation of Non-Instructional Services	1,912,724
4000 Facilities Acquisition, Construction and Improvement Services	3,750,024
5110 Debt Service	7,951,685
5130 Refund of Prior Year Revenues / Receipts	611,905
5140 Leases and Other Right-to-Use Arrangements	398,770
<b>Total Expenditures</b>	<b>\$116,679,322</b>
<b>Excess (Deficiency) Of Revenues Over Expenditures</b>	<b>\$3,616,168</b>
<b>Other Financing Sources (Uses)</b>	
9110 Face Value of Bonds Issued	9,380,000
9120 Proceeds from Refunding of Bonds	
9130 Bond Premiums	217,585
9200 Proceeds from Extended Term Financing, Leases, and Other Right-to-Use Arrangements	
9300 Interfund Transfers - IN	5,401,389
9400 Sale of or Compensation for Loss of Fixed Assets	12,283
9710 Transfers from Component Units	
9720 Transfers from Primary Governments	
9910 Other Financing Sources Not Listed in the 9000 Series	
9990 Insurance Recoveries	30,544
5120 Debt Service – Refunded Bonds	
5150 Bond Discounts	
5200 Interfund Transfers – Out	5,401,389
5300 Transfers Out to Component Units/Primary Governments	
<b>Total Other Financing Sources (Uses)</b>	<b>\$9,640,412</b>

Amounts Expressed in Whole Dollars	<u>General Fund</u> <u>(10)</u>	<u>Student Sponsored</u> <u>Activity Fund</u> <u>(21)</u>	<u>Public Purpose Trust</u> <u>(27)</u>	<u>Other Compt Approved</u> <u>(28)</u>	<u>Athletic / Activity</u> <u>(29)</u>
<b>Special And Extraordinary Items</b>					
9920 Special Items – Gains					
9930 Extraordinary Items – Gains					
5520 Special Items – Losses					
5530 Extraordinary Items – Losses					
<b>Net Change In Fund Balances</b>	<b>\$1,952,443</b>				<b>\$39,943</b>
<b>Fund Balance</b>					
0001 Fund Balance - Beginning of Fiscal Year	33,172,612				19,199
<b>Fund Balance - End Of Year</b>	<b>\$35,125,055</b>				<b>\$59,142</b>

Amounts Expressed in Whole Dollars	<u>Capital Reserve (690.</u> <u>1850)</u> <u>(31)</u>	<u>Capital Reserve (1431)</u> <u>(32)</u>	<u>Other Capital Projects</u> <u>Fund</u> <u>(39)</u>	<u>Debt Service</u> <u>(40)</u>	<u>Permanent</u> <u>(90)</u>
<b>Special And Extraordinary Items</b>					
9920 Special Items – Gains					
9930 Extraordinary Items – Gains					
5520 Special Items – Losses					
5530 Extraordinary Items – Losses					
<b>Net Change In Fund Balances</b>		<b>\$2,746,225</b>	<b>\$8,179,497</b>	<b>\$338,472</b>	
<b>Fund Balance</b>					
0001 Fund Balance - Beginning of Fiscal Year		9,321,114	19,582	2,943,266	
<b>Fund Balance - End Of Year</b>		<b>\$12,067,339</b>	<b>\$8,199,079</b>	<b>\$3,281,738</b>	

Amounts Expressed in Whole Dollars	<u>Total Governmental Funds</u>
<b>Special And Extraordinary Items</b>	
9920 Special Items – Gains	
9930 Extraordinary Items – Gains	
5520 Special Items – Losses	
5530 Extraordinary Items – Losses	
<b>Net Change In Fund Balances</b>	<b>\$13,256,580</b>
<b>Fund Balance</b>	
0001 Fund Balance - Beginning of Fiscal Year	45,475,773
<b>Fund Balance - End Of Year</b>	<b>\$58,732,353</b>

Amounts Expressed in Whole Dollars	<u>Food Service</u> <u>(51)</u>	<u>Child Care</u> <u>Operations</u> <u>(52)</u>	<u>Other Enterprise</u> <u>(58)</u>	<u>TOTAL</u>	<u>Internal Service</u> <u>(60)</u>
<b>Assets And Deferred Outflows Of Resources</b>					
<b>Current Assets</b>					
0100 Cash and Cash Equivalents	1,188,600			1,188,600	
0110 Investments					
0130 Due From Other Funds					
0141 Due From Other Governments					
0142 State Revenue Receivable					
0143 Federal Revenue Receivable	25,297			25,297	
0146 Due from Primary Government					
0147 Due from Component Unit					
0150 Other Receivables	679			679	
0170 Inventories	49,626			49,626	
0180 Prepaid Expenses (Expenditures)					7,666,046
0190 Other Current Assets					
<b>Total Current Assets</b>	<b>\$1,264,202</b>			<b>\$1,264,202</b>	<b>\$7,666,046</b>
<b>Noncurrent Assets</b>					
0211 Land					
0212 Site Improvements (Net)					
0220 Buildings and Building Improvements (Net)					
0230 Tangible Property and Intangible Right-To-Use Assets (Net)	333,819			333,819	
0250 Construction in Progress					
0260 Long Term Prepayments					
0290 Other Noncurrent Assets					
<b>Total Noncurrent Assets</b>	<b>\$333,819</b>			<b>\$333,819</b>	
0910 Deferred Outflows of Resources	230,264			230,264	
<b>Total Assets And Deferred Outflows Of Resources</b>	<b>\$1,828,285</b>			<b>\$1,828,285</b>	<b>\$7,666,046</b>

Amounts Expressed in Whole Dollars	<u>Food Service</u> <u>(51)</u>	<u>Child Care</u> <u>Operations</u> <u>(52)</u>	<u>Other Enterprise</u> <u>(58)</u>	<u>TOTAL</u>	<u>Internal Service</u> <u>(60)</u>
<b>Liabilities And Deferred Inflows Of Resources And Net Position</b>					
<b>Current Liabilities</b>					
0400 Due to Other Funds	83,533			83,533	
0411 Due to Other Governments					
0413 Due to Component Unit					
0420 Accounts Payable	8,556			8,556	
0430 Contracts Payable					
0440 Current Portion of Long-Term Debt					
0450 Short-Term Payables					
0461 Accrued Salaries and Benefits					
0462 Payroll Deductions and Withholding					
0480 Unearned Revenues	134,035			134,035	
0490 Other Current Liabilities					
<b>Total Current Liabilities</b>	<b>\$226,124</b>			<b>\$226,124</b>	
<b>Noncurrent Liabilities</b>					
0510 Bonds Payable					
0520 Extended-Term Financing Agreements Payable					
0530 Lease and Other Right-To-Use Obligations					
0540 Accumulated Compensated Absences					
0550 Authority Lease Obligations					
0560 Other Post-Employment Benefits (OPEB)	133,267			133,267	
0570 Net Pension Liability	1,277,351			1,277,351	
0599 Other Noncurrent Liabilities					
<b>Total Noncurrent Liabilities</b>	<b>\$1,410,618</b>			<b>\$1,410,618</b>	
<b>Total Liabilities</b>	<b>\$1,636,742</b>			<b>\$1,636,742</b>	
0950 Deferred Inflows of Resources	50,818			50,818	
<b>Net Position</b>					
0791 Net Investment in Capital Assets	333,819			333,819	
0008 Restricted Net Position (0792 – 0798)					
0799 Unrestricted Net Position	(193,094)			(193,094)	7,666,046
<b>Total Net Position</b>	<b>\$140,725</b>			<b>\$140,725</b>	<b>\$7,666,046</b>
<b>Total Liabilities And Deferred Inflows Of Resources And Net Position</b>	<b>\$1,828,285</b>			<b>\$1,828,285</b>	<b>\$7,666,046</b>

Amounts Expressed in Whole Dollars	<u>Food Service</u> <u>(51)</u>	<u>Child Care Operations</u> <u>(52)</u>	<u>Other Enterprise</u> <u>(58)</u>	<u>TOTAL</u>	<u>Internal Service</u> <u>(60)</u>
<b>Operating Revenues</b>					
6600 Food Service Revenue	1,407,049			1,407,049	
0071 Charges for Services					12,669,094
0072 Other Operating Revenue					
<b>Total Operating Revenues</b>	<b>\$1,407,049</b>			<b>\$1,407,049</b>	<b>\$12,669,094</b>
<b>Operating Expenses</b>					
100 Personnel Services – Salaries	530,770			530,770	
200 Personnel Services – Employee Benefits	276,445			276,445	13,668,862
300 Purchased Professional and Technical Services	36,328			36,328	747,457
400 Purchased Property Services	94,204			94,204	
500 Other Purchased Services	56,162			56,162	
600 Supplies	1,147,361			1,147,361	
740 Depreciation	36,071			36,071	
770 Amortization Expense					
810 Dues and Fees	(265)			(265)	
880 Refunds of Prior Years' Receipts					
890 Miscellaneous Expenditures					
<b>Total Operating Expenses</b>	<b>\$2,177,076</b>			<b>\$2,177,076</b>	<b>\$14,416,319</b>
<b>Operating Income (Loss)</b>	<b>(\$770,027)</b>			<b>(\$770,027)</b>	<b>(\$1,747,225)</b>
<b>Non Operating Revenues (Expenses)</b>					
6500 Earnings on Investments	43,273			43,273	519,296
6830 Federal Revenue from Intermediary Sources					
6920 Contributions and Donations from Private Sources					
6930 Gains or Losses on Sale of Fixed Assets					
6991 Refunds of a Prior Year Expenditure					
7000 Revenue from State Sources	302,618			302,618	
8000 Revenue from Federal Sources	709,035			709,035	
9990 Insurance Recoveries					
820 Claims and Judgments Against the LEA					
830 Interest					
<b>TOTAL Non Operating Revenues (Expenses)</b>	<b>\$1,054,926</b>			<b>\$1,054,926</b>	<b>\$519,296</b>
<b>Income (Loss) Before Contributions And Transfers</b>	<b>\$284,899</b>			<b>\$284,899</b>	<b>(\$1,227,929)</b>

Amounts Expressed in Whole Dollars	<u>Food Service</u> <u>(51)</u>	<u>Child Care Operations</u> <u>(52)</u>	<u>Other Enterprise</u> <u>(58)</u>	<u>TOTAL</u>	<u>Internal Service</u> <u>(60)</u>
<b>Contributions, Transfers, and Special and Extraordinary Items</b>					
5200 Interfund Transfers – Out					
5300 Transfers Out to Component Units/Primary Governments					
5520 Special Items – Losses					
5530 Extraordinary Items – Losses					
9300 Interfund Transfers - IN					
9500 Capital Contributions					
9700 Transfers IN From Component Units/Primary Governments					
9920 Special Items – Gains					
9930 Extraordinary Items – Gains					
<b>Change In Net Position</b>	<b>\$284,899</b>			<b>\$284,899</b>	<b>(\$1,227,929)</b>
0002 Net Position - Beginning of Fiscal Year	(144,174)			(144,174)	8,893,975
0003 Accounting Changes / Residual Equity Transfers					
<b>Net Position - End Of Year</b>	<b>\$140,725</b>			<b>\$140,725</b>	<b>\$7,666,046</b>

LEA : 125237603 Radnor Township SD

Printed 12/23/2024 5:59:30 PM

Amounts Expressed in Whole Dollars	<u>Food Service</u> <u>(51)</u>	<u>Child Care Operations</u> <u>(52)</u>	<u>Other Enterprise</u> <u>(58)</u>	<u>TOTAL</u>	<u>Internal Service(60)</u>
<b>Cash Flows From Operating Activities</b>					
0011 Cash Receipts From Users	1,418,513			1,418,513	
0012 Cash Receipts From Assessments Made to Other Funds					12,669,094
0013 Cash Receipts From Earnings on Investments					
0014 Cash Receipts From Other Operating Revenue					
0015 Cash Payments To Employees For Services	869,500			869,500	
0016 Cash Payments For Insurance Claims					12,440,934
0017 Cash Payments To Suppliers For Goods and Services	1,184,010			1,184,010	
0018 Cash Payments For Other Operating Expenses					747,457
<b>Net Cash Provided By (Used For) Operating Activities</b>	<b>(\$634,997)</b>			<b>(\$634,997)</b>	<b>(\$519,297)</b>
<b>Cash Flows From Non-Capital Financing Activities</b>					
0021 Receipts From Local Sources - 6000					
0022 Receipts From State Sources - 7000	303,841			303,841	
0023 Receipts From Federal Sources -8000	570,153			570,153	
0024 Notes and Loans Received (Repaid)					
0025 Interest Paid on Notes/Loans - 5100-830					
0026 Operating Transfers In (Out)/Residual Equity Trans					
0027 Operating Transfers In (Out) Primary Government / Comp Unit					
0028 Receipts From Refund of Prior Year Expenditures - 6991					
0029 Special and Extraordinary Gains (losses)					
0030 Receipts from Insurance Recoveries -9990					
<b>Net Cash Prov By (Used for) Non-Capital Financing Activities</b>	<b>\$873,994</b>			<b>\$873,994</b>	
<b>Cash Flows From Capital and Related Financing Activities</b>					
0031 Payments For Fac Acq, Const, and Imp - 4000	(42,797)			(42,797)	
0032 Proceeds from Disposal of Capital Assets					
0033 Proceeds From Extended Term Financing - 9200					
0034 Principal Paid on Financing Agreements					
0035 Interest Paid on Financing Agreements - 5100-830					
0036 (Inc) Dec in Contributed Capital					
<b>Net Cash Prov By (Used for) Capital and Related Financing Activities</b>	<b>(\$42,797)</b>			<b>(\$42,797)</b>	
<b>Cash Flows From Investing Activities</b>					
0041 Earnings on Investments - 6500	43,273			43,273	519,297
0042 Purchase of Inv Securities / Deposits to Inv Pools					
0043 Receipts From Investment Pool Withdrawals					
0044 Proceeds from Sale and Maturity of Inv Securities					

LEA : 125237603 Radnor Township SD

Printed 12/23/2024 5:59:30 PM

0045 Loans Received (Paid)

<b>Net Cash Prov By (Used for) Investing Activities</b>	<b>\$43,273</b>	<b>\$43,273</b>	<b>\$519,297</b>
---	-----------------	-----------------	------------------

	<u>Food Service</u> <u>(51)</u>	<u>Child Care Operations</u> <u>(52)</u>	<u>Other Enterprise</u> <u>(58)</u>	<u>TOTAL</u>	<u>Internal Service</u> <u>(60)</u>
<b>Net Increase (Decrease) in Cash Flows</b>	<b>239,473</b>			<b>239,473</b>	
0004 Cash and Cash Equivalents Beginning of Year	949,127			949,127	
<b>Cash and Cash Equivalents at Year End</b>	<b>\$1,188,600</b>			<b>\$1,188,600</b>	
<hr/>					
<b>Reconciliation of Operating Income (Loss) To Net Cash Provided by (Used For) Operating Activities</b>					
0005 Operating Income (Loss) per REP	(770,027)			(770,027)	(1,747,225)
<b>Adjustments</b>					
0051 Depreciation and Net Amortization	36,071			36,071	
0052 Provision for Uncollectible Accounts					
0053 Other Adjustments	148,529			148,529	
<b>Effect of Changes in Assets, Liabilities, Deferred Outflows and Deferred Inflows</b>					
0054 (Inc) Dec In Accounts Receivable (0120-0150)	7,091			7,091	
0055 Advances to Other Funds					
0056 (Inc) Dec in Inventories (0170)	(7,700)			(7,700)	
0057 (Inc) Dec in Prepaid Expenses (0180)	794			794	1,227,928
0058 (Inc) Dec in Other Current or Noncurrent Assets					
0064 Deferred Outflows (0910)	13,786			13,786	
0059 Inc (Dec) in Accounts Payable (0400-0450)	8,157			8,157	
0060 Inc (Dec) in Accrued Salaries/Benefits (0461)					
0065 Inc (Dec) in Net Pension Liabilities (0570)	(152,160)			(152,160)	
0066 Inc (Dec) in Other Postemp Benefit Oblig (0560)	26,006			26,006	
0061 Inc (Dec) in Payroll Deductions/Withholding (0462)					
0062 Inc (Dec) in Unearned Revenue (0480)	4,374			4,374	
0063 Inc (Dec) in Other Current or Noncurrent Liabilities	62,819			62,819	
0067 Deferred Inflows (0950)	(12,736)			(12,736)	
<b>Total Adjustments</b>	<b>\$135,031</b>			<b>\$135,031</b>	<b>\$1,227,928</b>
<b>Cash Provided By (Used for) Total</b>	<b>(\$634,996)</b>			<b>(\$634,996)</b>	<b>(\$519,297)</b>

**COMBINED STATEMENT OF CASH FLOWS**  
**SCHEDULE OF NONCASH INVESTING, CAPITAL, AND FINANCING ACTIVITIES**

Explanation of Transaction and Balance Sheet Effect	Amount
USDA Donated Commodities	148,529
<b>Total</b>	<b>\$148,529</b>

LEA : 125237603 Radnor Township SD

Printed 12/23/2024 5:59:32 PM

Amounts Expressed in Whole Dollars	<u>Private Purpose Trust</u> <u>(71)</u>	<u>Investment Trust</u> <u>(72)</u>	<u>Pension Trust</u> <u>(73)</u>	<u>Student Activity Custodial</u> <u>(81)</u>
<b>Assets And Deferred Outflows Of Resources</b>				
<b>Assets</b>				
0100 Cash and Cash Equivalents	323,913			85,455
0110 Investments				
0130 Due From Other Funds				
0140 Due from Other Governments, Primary Government and Component Units				
0150 Other Receivables				
0170 Inventories				
0180 Prepaid Expenses (Expenditures)				
0190 Other Current Assets				
0220 Buildings and Building Improvements (Net)				
0230 Tangible Property and Intangible Right-To-Use Assets (Net)				
<b>Total Assets</b>	<b>\$323,913</b>			<b>\$85,455</b>
0910 Deferred Outflows of Resources				
<b>Total Assets And Deferred Outflows Of Resources</b>	<b>\$323,913</b>			<b>\$85,455</b>



LEA : 125237603 Radnor Township SD

Printed 12/23/2024 5:59:32 PM

Amounts Expressed in Whole Dollars

Private Purpose Trust  
(71)

Investment Trust  
(72)

Pension Trust  
(73)

Student Activity Custodial  
(81)

**Liabilities, Deferred Inflows Of Resources And Net Position**

**Liabilities**

0400 Due to Other Funds			
0410 Due to Other Governments, Primary Government and Component Units			
0420 Accounts Payable	1,000		56,377
0430 Contracts Payable			
0450 Short-Term Payables			
0460 Payroll Accruals and Withholdings			
0480 Unearned Revenues			
0490 Other Current Liabilities			

<b>Total Liabilities</b>	<b>\$1,000</b>		<b>\$56,377</b>
--------------------------	----------------	--	-----------------

0950 Deferred Inflows of Resources

**Net Position**

0791 Net Investment in Capital Assets			
0009 Restricted Net Position (0792 – 0798)	322,913		29,078
0799 Unrestricted Net Position			

<b>Total Net Position</b>	<b>\$322,913</b>		<b>\$29,078</b>
---------------------------	------------------	--	-----------------

<b>Total Liabilities, Deferred Inflows Of Resources And Net Position</b>	<b>\$323,913</b>		<b>\$85,455</b>
--	------------------	--	-----------------

LEA : 125237603 Radnor Township SD

Printed 12/23/2024 5:59:32 PM

Amounts Expressed in Whole Dollars	<u>Other Custodial</u> <u>(89)</u>	<u>Fiduciary Component Units</u> <u>(98)</u>	<u>Total Fiduciary Funds</u>
<b>Liabilities, Deferred Inflows Of Resources And Net Position</b>			
<b>Liabilities</b>			
0400 Due to Other Funds			
0410 Due to Other Governments, Primary Government and Component Units			
0420 Accounts Payable			57,377
0430 Contracts Payable			
0450 Short-Term Payables			
0460 Payroll Accruals and Withholdings			
0480 Unearned Revenues			
0490 Other Current Liabilities			
<b>Total Liabilities</b>			<b>\$57,377</b>
0950 Deferred Inflows of Resources			
<b>Net Position</b>			
0791 Net Investment in Capital Assets			
0009 Restricted Net Position (0792 – 0798)			351,991
0799 Unrestricted Net Position			
<b>Total Net Position</b>			<b>\$351,991</b>
<b>Total Liabilities, Deferred Inflows Of Resources And Net Position</b>			<b>\$409,368</b>

Amounts Expressed in Whole Dollars	<u>Private Purpose Trust</u> <u>(71)</u>	<u>Investment Trust</u> <u>(72)</u>	<u>Pension Trust</u> <u>(73)</u>	<u>Student Activity</u> <u>Custodial</u> <u>(81)</u>	<u>Other Custodial</u> <u>(89)</u>	<u>Fiduciary Component</u> <u>Units</u> <u>(98)</u>
<b>Additions</b>						
0091 Gifts and Contributions	27,453			115,266		
0095 Net Investment Earnings						
0092 Other Additions						
<b>Deductions</b>						
0093 Scholarships Awarded	17,230					
0094 Other Deductions				161,222		
<b>Change In Net Position</b>	<b>\$10,223</b>			<b>(\$45,956)</b>		
0006 Net Position – Beginning of Fiscal Year	312,690			75,033		
0007 Net Position Held in Trust for Pension Benefits						
<b>Net Position - End of Fiscal Year</b>	<b>\$322,913</b>			<b>\$29,077</b>		

Amounts Expressed in Whole Dollars	<u>Total Fiduciary Funds</u>
<b>Additions</b>	
0091 Gifts and Contributions	142,719
0095 Net Investment Earnings	
0092 Other Additions	
<b>Deductions</b>	
0093 Scholarships Awarded	17,230
0094 Other Deductions	161,222
<b>Change in Net Position</b>	<b>(\$35,733)</b>
0006 Net Position – Beginning of Fiscal Year	387,723
0007 Net Position Held in Trust for Pension Benefits	
<b>Net Position - End of Fiscal Year</b>	<b>\$351,990</b>

	<u>Revenue Reported In Current Year</u>	<u>Current Year Tax Accrual</u>	<u>Prior Year Tax Accrual</u>	<u>Taxes Collected In Current Year</u>
<b><u>Revenue from Local Sources</u></b>				
6111 Current Real Estate Taxes	90,391,055.81			90,391,055.81
6112 Interim Real Estate Taxes	1,419,459.87			1,419,459.87
6113 Public Utility Realty Taxes	77,950.33			77,950.33
6143 Current Act 511 Local Services Taxes	102,267.88			102,267.88
6153 Current Act 511 Real Estate Transfer Taxes	2,095,226.97			2,095,226.97
6411 Delinquent Real Estate Taxes	967,045.45			967,045.45
6500 Earnings on Investments	3,011,048.77			
6832 Federal IDEA Revenue Received as Pass Through	601,808.00			
6839 Federal Revenue Received from Other Sources	25,000.00			
6910 Rentals	46,428.12			
6920 Contributions and Donations from Private Sources	139.54			
6942 Summer School Tuition	21,050.00			
6944 Receipts from Other LEAs in Pennsylvania - Education	1,004,823.57			
6991 Refunds of a Prior Year Expenditure	5,760.00			
6999 Other Revenues Not Specified Above	210,679.52			
<b>TOTAL Revenue from Local Sources</b>	<b>\$99,979,743.83</b>			<b>\$95,053,006.31</b>

**Revenue Reported  
In Current Year**

**Revenue from State Sources**

7111 Basic Education Funding-Formula	3,025,138.48		
7160 Tuition for Orphans Subsidy	41,718.06		
7271 Special Education funds for School-Aged Pupils	1,502,528.47		
7311 Pupil Transportation Subsidy	429,085.53		
7312 Nonpublic and Charter School Pupil Transportation Subsidy	132,825.00		
7320 Rental and Sinking Fund Payments / Building Reimbursement Subsidy	50,036.80		
7330 Health Services (Medical, Dental, Nurse, Act 25)	125,573.92		
7340 State Property Tax Reduction Allocation	1,831,701.07		
7361 School Safety and Security Grants	85,056.80		
7362 School Mental Health & Safety and Security Grants	305,990.19		
7505 Ready to Learn Block Grant	113,925.00		
7599 Other State Revenue Not Listed Elsewhere in the 7000 Series	116,838.00		
7810 State Share of Social Security and Medicare Taxes	1,760,491.20		
7820 State Share of Retirement Contributions	8,270,793.09		
<b>TOTAL Revenue from State Sources</b>	<b>\$17,791,701.61</b>		

	<b>Revenue Reported In Current Year</b>			
<b>Revenue from Federal Sources</b>				
8514 Title I - Improving the Academic Achievement of the Disadvantaged	446,418.00			
8515 Title II - Preparing, Training, and Recruiting High Quality Teachers and Principals	55,599.94			
8516 Title III - Language Instruction for English Learners and Immigrant Students	43,566.00			
8517 Title IV - 21st Century Schools	66,124.68			
8731 ARRA - Build America Bonds	80,729.19			
8732 ARRA - Qualified School Construction Bonds (QSCB)	88,800.24			
8744 ARP ESSER - Elementary and Secondary School Emergency Relief Fund	876,615.64			
8751 ARP ESSER Learning Loss	71,000.40			
8752 ARP ESSER Summer Programs	38,245.41			
8753 ARP ESSER Afterschool Programs	14,199.68			
8755 ARP ESSER Emergency Relief for Other Educational Entities	70,333.00			
8820 Medical Assistance Reimbursement for Administrative Claiming (Quarterly) Program	3,440.13			
<b>TOTAL Revenue from Federal Sources</b>	<b>\$1,855,072.31</b>			

**Revenue Reported  
In Current Year**

**Other Financing Sources**

9400 Sale of or Compensation for Loss of Fixed Assets	12,283.30			
9990 Insurance Recoveries	30,543.83			
<b>TOTAL Other Financing Sources</b>	<b>\$42,827.13</b>			
<b>TOTAL FROM ALL SOURCES</b>	<b>\$119,669,344.88</b>			<b>\$95,053,006.31</b>

LEA : 125237603 Radnor Township SD

Printed 12/23/2024 5:59:39 PM

	<u>General Fund (10)</u>	<u>Student Sponsored Activity Fund (21)</u>	<u>Public Purpose Trust (27)</u>	<u>Other Compt Approved (28)</u>	<u>Athletic / Activity (29)</u>	<u>Capital Reserve (690, 1850) (31)</u>
<b>6000 Revenue from Local Sources</b>						
6111 Current Real Estate Taxes	90,391,055.81					
6112 Interim Real Estate Taxes	1,419,459.87					
6113 Public Utility Realty Taxes	77,950.33					
6143 Current Act 511 Local Services Taxes	102,267.88					
6153 Current Act 511 Real Estate Transfer Taxes	2,095,226.97					
6411 Delinquent Real Estate Taxes	967,045.45					
6500 Earnings on Investments	3,011,048.77				1,599.04	
6832 Federal IDEA Revenue Received as Pass Through	601,808.00					
6839 Federal Revenue Received from Other Sources	25,000.00					
6910 Rentals	46,428.12					
6920 Contributions and Donations from Private Sources	139.54					
6942 Summer School Tuition	21,050.00					
6944 Receipts from Other LEAs in Pennsylvania - Education	1,004,823.57					
6991 Refunds of a Prior Year Expenditure	5,760.00				3,325.00	
6999 Other Revenues Not Specified Above	210,679.52				29,508.75	
<b>6000 Total Revenue from Local Sources</b>	<b>\$99,979,743.83</b>				<b>\$34,432.79</b>	
<b>7000 Revenue from State Sources</b>						
7111 Basic Education Funding-Formula	3,025,138.48					
7160 Tuition for Orphans Subsidy	41,718.06					
7271 Special Education funds for School-Aged Pupils	1,502,528.47					
7311 Pupil Transportation Subsidy	429,085.53					
7312 Nonpublic and Charter School Pupil Transportation Subsidy	132,825.00					
7320 Rental and Sinking Fund Payments / Building Reimbursement Subsidy	50,036.80					
7330 Health Services (Medical, Dental, Nurse, Act 25)	125,573.92					
7340 State Property Tax Reduction Allocation	1,831,701.07					
7361 School Safety and Security Grants	85,056.80					
7362 School Mental Health & Safety and Security Grants	305,990.19					
7505 Ready to Learn Block Grant	113,925.00					
7599 Other State Revenue Not Listed Elsewhere in the 7000 Series	116,838.00					
7810 State Share of Social Security and Medicare Taxes	1,760,491.20					
7820 State Share of Retirement Contributions	8,270,793.09					
<b>7000 Total Revenue from State Sources</b>	<b>\$17,791,701.61</b>					
<b>8000 Revenue from Federal Sources</b>						
8514 Title I - Improving the Academic Achievement of the Disadvantaged	446,418.00					

LEA : 125237603 Radnor Township SD

Printed 12/23/2024 5:59:39 PM

	<u>Capital Reserve</u> <u>(1431) (32)</u>	<u>Other Capital</u> <u>Projects Fund (39)</u>	<u>Debt Service (40)</u>	<u>Permanent (90)</u>	<u>Total</u>
<b>6000 Revenue from Local Sources</b>					
6111 Current Real Estate Taxes					90,391,055.81
6112 Interim Real Estate Taxes					1,419,459.87
6113 Public Utility Realty Taxes					77,950.33
6143 Current Act 511 Local Services Taxes					102,267.88
6153 Current Act 511 Real Estate Transfer Taxes					2,095,226.97
6411 Delinquent Real Estate Taxes					967,045.45
6500 Earnings on Investments	301,789.87	275,666.14	57,083.00		3,647,186.82
6832 Federal IDEA Revenue Received as Pass Through					601,808.00
6839 Federal Revenue Received from Other Sources					25,000.00
6910 Rentals					46,428.12
6920 Contributions and Donations from Private Sources					139.54
6942 Summer School Tuition					21,050.00
6944 Receipts from Other LEAs in Pennsylvania - Education					1,004,823.57
6991 Refunds of a Prior Year Expenditure					9,085.00
6999 Other Revenues Not Specified Above					240,188.27
<b>6000 Total Revenue from Local Sources</b>	<b>\$301,789.87</b>	<b>\$275,666.14</b>	<b>\$57,083.00</b>		<b>\$100,648,715.63</b>
<b>7000 Revenue from State Sources</b>					
7111 Basic Education Funding-Formula					3,025,138.48
7160 Tuition for Orphans Subsidy					41,718.06
7271 Special Education funds for School-Aged Pupils					1,502,528.47
7311 Pupil Transportation Subsidy					429,085.53
7312 Nonpublic and Charter School Pupil Transportation Subsidy					132,825.00
7320 Rental and Sinking Fund Payments / Building Reimbursement Subsidy					50,036.80
7330 Health Services (Medical, Dental, Nurse, Act 25)					125,573.92
7340 State Property Tax Reduction Allocation					1,831,701.07
7361 School Safety and Security Grants					85,056.80
7362 School Mental Health & Safety and Security Grants					305,990.19
7505 Ready to Learn Block Grant					113,925.00
7599 Other State Revenue Not Listed Elsewhere in the 7000 Series					116,838.00
7810 State Share of Social Security and Medicare Taxes					1,760,491.20
7820 State Share of Retirement Contributions					8,270,793.09
<b>7000 Total Revenue from State Sources</b>					<b>\$17,791,701.61</b>
<b>8000 Revenue from Federal Sources</b>					
8514 Title I - Improving the Academic Achievement of the Disadvantaged					446,418.00

	<u>General Fund (10)</u>	<u>Student Sponsored Activity Fund (21)</u>	<u>Public Purpose Trust (27)</u>	<u>Other Compt Approved (28)</u>	<u>Athletic / Activity (29)</u>	<u>Capital Reserve (690.1850) (31)</u>
<b>8000 Revenue from Federal Sources</b>						
8515 Title II - Preparing, Training, and Recruiting High Quality Teachers and Principals	55,599.94					
8516 Title III - Language Instruction for English Learners and Immigrant Students	43,566.00					
8517 Title IV - 21st Century Schools	66,124.68					
8731 ARRA - Build America Bonds	80,729.19					
8732 ARRA - Qualified School Construction Bonds (QSCB)	88,800.24					
8744 ARP ESSER - Elementary and Secondary School Emergency Relief Fund	876,615.64					
8751 ARP ESSER Learning Loss	71,000.40					
8752 ARP ESSER Summer Programs	38,245.41					
8753 ARP ESSER Afterschool Programs	14,199.68					
8755 ARP ESSER Emergency Relief for Other Educational Entities	70,333.00					
8820 Medical Assistance Reimbursement for Administrative Claiming (Quarterly) Program	3,440.13					
<b>8000 Total Revenue from Federal Sources</b>	<b>\$1,855,072.31</b>					
<b>9000 Other Financing Sources</b>						
9110 Face Value of Bonds Issued						
9130 Bond Premiums						
9310 General Fund Transfers					45,000.00	
9400 Sale of or Compensation for Loss of Fixed Assets	12,283.30					
9990 Insurance Recoveries	30,543.83					
<b>9000 Total Other Financing Sources</b>	<b>\$42,827.13</b>				<b>\$45,000.00</b>	
<b>Total From All Sources</b>	<b>\$119,669,344.88</b>				<b>\$79,432.79</b>	

	<u>Capital Reserve</u> <u>(1431) (32)</u>	<u>Other Capital</u> <u>Projects Fund (39)</u>	<u>Debt Service (40)</u>	<u>Permanent (90)</u>	<u>Total</u>
<b>8000 Revenue from Federal Sources</b>					
8515 Title II - Preparing, Training, and Recruiting High Quality Teachers and Principals					55,599.94
8516 Title III - Language Instruction for English Learners and Immigrant Students					43,566.00
8517 Title IV - 21st Century Schools					66,124.68
8731 ARRA - Build America Bonds					80,729.19
8732 ARRA - Qualified School Construction Bonds (QSCB)					88,800.24
8744 ARP ESSER - Elementary and Secondary School Emergency Relief Fund					876,615.64
8751 ARP ESSER Learning Loss					71,000.40
8752 ARP ESSER Summer Programs					38,245.41
8753 ARP ESSER Afterschool Programs					14,199.68
8755 ARP ESSER Emergency Relief for Other Educational Entities					70,333.00
8820 Medical Assistance Reimbursement for Administrative Claiming (Quarterly) Program					3,440.13
<b>8000 Total Revenue from Federal Sources</b>					<b>\$1,855,072.31</b>
<b>9000 Other Financing Sources</b>					
9110 Face Value of Bonds Issued		9,380,000.00			9,380,000.00
9130 Bond Premiums		217,585.15			217,585.15
9310 General Fund Transfers	5,075,000.00		281,389.00		5,401,389.00
9400 Sale of or Compensation for Loss of Fixed Assets					12,283.30
9990 Insurance Recoveries					30,543.83
<b>9000 Total Other Financing Sources</b>	<b>\$5,075,000.00</b>	<b>\$9,597,585.15</b>	<b>\$281,389.00</b>		<b>\$15,041,801.28</b>
<b>Total From All Sources</b>	<b>\$5,376,789.87</b>	<b>\$9,873,251.29</b>	<b>\$338,472.00</b>		<b>\$135,337,290.83</b>

	<u>General Fund (10)</u>	<u>Student Sponsored Activity Fund (21)</u>	<u>Public Purpose Trust (27)</u>	<u>Other Compt Approved (28)</u>	<u>Athletic / Activity (29)</u>	<u>Capital Reserve (690. 1850) (31)</u>
Revenue from Local Sources	99,979,743.83				34,432.79	
Revenue from State Sources	17,791,701.61					
Revenue from Federal Sources	1,855,072.31					
Other Financing Sources	42,827.13				45,000.00	
<b>Total From All Sources</b>	<b>\$119,669,344.88</b>				<b>\$79,432.79</b>	

	<u>Capital Reserve (1431)</u> <u>(32)</u>	<u>Other Capital Projects</u> <u>Fund (39)</u>	<u>Debt Service (40)</u>	<u>Permanent (90)</u>	<u>Total</u>
Revenue from Local Sources	301,789.87	275,666.14	57,083.00		100,648,715.63
Revenue from State Sources					17,791,701.61
Revenue from Federal Sources					1,855,072.31
Other Financing Sources	5,075,000.00	9,597,585.15	281,389.00		15,041,801.28
<b>Total From All Sources</b>	<b>\$5,376,789.87</b>	<b>\$9,873,251.29</b>	<b>\$338,472.00</b>		<b>\$135,337,290.83</b>

**General Fund (10)**

	<u>Total</u>
<b>1000 Instruction</b>	
<b>100 Personnel Services – Salaries</b>	
100 Personnel Services – Salaries	31,492,126.40
<b>Total Personnel Services – Salaries</b>	<b>\$31,492,126.40</b>
<b>200 Personnel Services – Employee Benefits</b>	
210 Group Insurance – Contracted Provider	3,901,710.68
220 Social Security Contributions	2,328,429.26
230 PSERS Retirement Contributions	10,547,022.76
250 Unemployment Compensation	13,338.90
260 Workers’ Compensation	142,539.71
270 Group Insurance – Self-Insurance	1,660,291.67
<b>Total Personnel Services – Employee Benefits</b>	<b>\$18,593,332.98</b>
<b>300 Purchased Professional and Technical Services</b>	
322 Professional Educational Services – Ius	681,840.44
329 Professional Educational Services – Other	1,461,231.64
330 Other Professional Services	2,374,313.09
340 Technical Services	689.04
390 Other Purchased Professional and Technical Services	177,770.64
<b>Total Purchased Professional and Technical Services</b>	<b>\$4,695,844.85</b>
<b>400 Purchased Property Services</b>	
430 Repairs and Maintenance Services	33,743.35
<b>Total Purchased Property Services</b>	<b>\$33,743.35</b>
<b>500 Other Purchased Services</b>	
550 Printing and Binding	3,564.75
562 Tuition To Pennsylvania Charter Schools	349,625.48
563 Tuition To Nonpublic Schools	2,951,479.75
564 Tuition To Career and Technology Centers	529,183.20
566 Tuition To Institutions of Higher Education and Technical Institutes	1,128,835.00
567 Tuition To Approved Private Schools (APS) and PA Chartered Schools for the Deaf and Blind	422,681.49
580 Travel	1,487.32
594 IU Payment By Withholding for Institutionalized Children’s Programs – Special Classes	1,167.46
599 Other Miscellaneous Purchased Services	24,629.73
<b>Total Other Purchased Services</b>	<b>\$5,412,654.18</b>
<b>600 Supplies</b>	
610 General Supplies	965,626.38
630 Food	15,969.29
640 Books and Periodicals	234,626.79
650 Supplies & Fees – Technology Related	689,861.52
<b>Total Supplies</b>	<b>\$1,906,083.98</b>
<b>700 Property</b>	
752 Capital Equipment – Original and Additional	7,954.93
756 Capitalized Technology Equipment – Original	1,240,777.65
762 Capitalized Equipment - Replacement	6,596.84
768 Capitalized Technology Software - Replacement	95,663.07

**General Fund (10)**

<b>1000 Instruction</b>	<u><b>Total</b></u>
<b>Total Property</b>	<b>\$1,350,992.49</b>
<b>800 Other Objects</b>	
810 Dues and Fees	3,038.35
890 Miscellaneous Expenditures	70,333.00
<b>Total Other Objects</b>	<b>\$73,371.35</b>
<b>Total 1000 Instruction</b>	<b>\$63,558,149.58</b>

**General Fund (10)**

**1100 Regular Programs – Elementary / Secondary**

	<u>Elementary</u>	<u>Secondary</u>	<u>Federal</u>	<u>Total</u>
<b>100 Personnel Services – Salaries</b>				
100 Personnel Services – Salaries	12,430,966.76	12,466,000.86	303,905.46	25,200,873.08
<b>Total Personnel Services – Salaries</b>	<b>\$12,430,966.76</b>	<b>\$12,466,000.86</b>	<b>\$303,905.46</b>	<b>\$25,200,873.08</b>
<b>200 Personnel Services – Employee Benefits</b>				
210 Group Insurance – Contracted Provider	1,567,863.12	1,568,911.12	46,839.24	3,183,613.48
220 Social Security Contributions	930,375.37	924,842.26	12,388.29	1,867,605.92
230 PSERS Retirement Contributions	4,208,852.18	4,196,185.19	24,917.51	8,429,954.88
250 Unemployment Compensation	5,226.66	6,608.09		11,834.75
260 Workers' Compensation	44,638.18	64,764.91	1,309.34	110,712.43
270 Group Insurance – Self-Insurance	682,821.49	702,518.55	17,564.36	1,402,904.40
<b>Total Personnel Services – Employee Benefits</b>	<b>\$7,439,777.00</b>	<b>\$7,463,830.12</b>	<b>\$103,018.74</b>	<b>\$15,006,625.86</b>
<b>300 Purchased Professional and Technical Services</b>				
322 Professional Educational Services – Ius			108,657.98	108,657.98
329 Professional Educational Services – Other	815,458.11	593,826.77	10,861.79	1,420,146.67
330 Other Professional Services		348.00		348.00
<b>Total Purchased Professional and Technical Services</b>	<b>\$815,458.11</b>	<b>\$594,174.77</b>	<b>\$119,519.77</b>	<b>\$1,529,152.65</b>
<b>400 Purchased Property Services</b>				
430 Repairs and Maintenance Services	8,503.76	19,641.39		28,145.15
<b>Total Purchased Property Services</b>	<b>\$8,503.76</b>	<b>\$19,641.39</b>		<b>\$28,145.15</b>
<b>500 Other Purchased Services</b>				
550 Printing and Binding	2,907.77	656.98		3,564.75
562 Tuition To Pennsylvania Charter Schools	88,911.76	131,690.82		220,602.58
580 Travel	493.37	49.58	944.37	1,487.32
<b>Total Other Purchased Services</b>	<b>\$92,312.90</b>	<b>\$132,397.38</b>	<b>\$944.37</b>	<b>\$225,654.65</b>
<b>600 Supplies</b>				
610 General Supplies	621,885.68	309,677.82	7,707.53	939,271.03
630 Food	1,263.83	14,094.20	115.90	15,473.93
640 Books and Periodicals	83,459.00	35,694.73	49,174.00	168,327.73
650 Supplies & Fees – Technology Related	467,571.11	144,598.11	9,286.82	621,456.04
<b>Total Supplies</b>	<b>\$1,174,179.62</b>	<b>\$504,064.86</b>	<b>\$66,284.25</b>	<b>\$1,744,528.73</b>
<b>700 Property</b>				
752 Capital Equipment – Original and Additional	89.65	7,865.28		7,954.93
756 Capitalized Technology Equipment – Original	305,773.74	935,003.91		1,240,777.65
762 Capitalized Equipment - Replacement	889.63	1,806.21		2,695.84
768 Capitalized Technology Software - Replacement		95,663.07		95,663.07
<b>Total Property</b>	<b>\$306,753.02</b>	<b>\$1,040,338.47</b>		<b>\$1,347,091.49</b>
<b>800 Other Objects</b>				
810 Dues and Fees	202.94	2,505.74		2,708.68
<b>Total Other Objects</b>	<b>\$202.94</b>	<b>\$2,505.74</b>		<b>\$2,708.68</b>
<b>Total 1100 Regular Programs – Elementary / Secondary</b>	<b>\$22,268,154.11</b>	<b>\$22,222,953.59</b>	<b>\$593,672.59</b>	<b>\$45,084,780.29</b>

**General Fund (10)**

**1110 Regular Programs**

	<u>Elementary</u>	<u>Secondary</u>	<u>Federal</u>	<u>Total</u>
<b>100 Personnel Services – Salaries</b>				
100 Personnel Services – Salaries	12,430,966.76	12,466,000.86	70,556.57	24,967,524.19
<b>Total Personnel Services – Salaries</b>	<b>\$12,430,966.76</b>	<b>\$12,466,000.86</b>	<b>\$70,556.57</b>	<b>\$24,967,524.19</b>
<b>200 Personnel Services – Employee Benefits</b>				
210 Group Insurance – Contracted Provider	1,567,863.12	1,568,911.12	371.65	3,137,145.89
220 Social Security Contributions	930,375.37	924,842.26	2,176.50	1,857,394.13
230 PSERS Retirement Contributions	4,208,852.18	4,196,185.19	8,908.13	8,413,945.50
250 Unemployment Compensation	5,226.66	6,608.09		11,834.75
260 Workers' Compensation	44,638.18	64,764.91		109,403.09
270 Group Insurance – Self-Insurance	682,821.49	702,518.55	140.19	1,385,480.23
<b>Total Personnel Services – Employee Benefits</b>	<b>\$7,439,777.00</b>	<b>\$7,463,830.12</b>	<b>\$11,596.47</b>	<b>\$14,915,203.59</b>
<b>300 Purchased Professional and Technical Services</b>				
322 Professional Educational Services – Ius			108,657.98	108,657.98
329 Professional Educational Services – Other	815,458.11	593,826.77		1,409,284.88
330 Other Professional Services		348.00		348.00
<b>Total Purchased Professional and Technical Services</b>	<b>\$815,458.11</b>	<b>\$594,174.77</b>	<b>\$108,657.98</b>	<b>\$1,518,290.86</b>
<b>400 Purchased Property Services</b>				
430 Repairs and Maintenance Services	8,503.76	19,641.39		28,145.15
<b>Total Purchased Property Services</b>	<b>\$8,503.76</b>	<b>\$19,641.39</b>		<b>\$28,145.15</b>
<b>500 Other Purchased Services</b>				
550 Printing and Binding	2,907.77	656.98		3,564.75
562 Tuition To Pennsylvania Charter Schools	88,911.76	131,690.82		220,602.58
580 Travel	493.37	49.58		542.95
<b>Total Other Purchased Services</b>	<b>\$92,312.90</b>	<b>\$132,397.38</b>		<b>\$224,710.28</b>
<b>600 Supplies</b>				
610 General Supplies	621,885.68	309,677.82		931,563.50
630 Food	1,263.83	14,094.20		15,358.03
640 Books and Periodicals	83,459.00	35,694.73		119,153.73
650 Supplies & Fees – Technology Related	467,571.11	144,598.11		612,169.22
<b>Total Supplies</b>	<b>\$1,174,179.62</b>	<b>\$504,064.86</b>		<b>\$1,678,244.48</b>
<b>700 Property</b>				
752 Capital Equipment – Original and Additional	89.65	7,865.28		7,954.93
756 Capitalized Technology Equipment – Original	305,773.74	935,003.91		1,240,777.65
762 Capitalized Equipment - Replacement	889.63	1,806.21		2,695.84
768 Capitalized Technology Software - Replacement		95,663.07		95,663.07
<b>Total Property</b>	<b>\$306,753.02</b>	<b>\$1,040,338.47</b>		<b>\$1,347,091.49</b>
<b>800 Other Objects</b>				
810 Dues and Fees	202.94	2,505.74		2,708.68
<b>Total Other Objects</b>	<b>\$202.94</b>	<b>\$2,505.74</b>		<b>\$2,708.68</b>
<b>Total 1110 Regular Programs</b>	<b>\$22,268,154.11</b>	<b>\$22,222,953.59</b>	<b>\$190,811.02</b>	<b>\$44,681,918.72</b>

**General Fund (10)**

**1190 Federally-Funded Regular Programs**

	<u>Elementary</u>	<u>Secondary</u>	<u>Federal</u>	<u>Total</u>
<b>100 Personnel Services – Salaries</b>				
100 Personnel Services – Salaries			233,348.89	233,348.89
<b>Total Personnel Services – Salaries</b>			<b>\$233,348.89</b>	<b>\$233,348.89</b>
<b>200 Personnel Services – Employee Benefits</b>				
210 Group Insurance – Contracted Provider			46,467.59	46,467.59
220 Social Security Contributions			10,211.79	10,211.79
230 PSERS Retirement Contributions			16,009.38	16,009.38
260 Workers' Compensation			1,309.34	1,309.34
270 Group Insurance – Self-Insurance			17,424.17	17,424.17
<b>Total Personnel Services – Employee Benefits</b>			<b>\$91,422.27</b>	<b>\$91,422.27</b>
<b>300 Purchased Professional and Technical Services</b>				
329 Professional Educational Services – Other			10,861.79	10,861.79
<b>Total Purchased Professional and Technical Services</b>			<b>\$10,861.79</b>	<b>\$10,861.79</b>
<b>500 Other Purchased Services</b>				
580 Travel			944.37	944.37
<b>Total Other Purchased Services</b>			<b>\$944.37</b>	<b>\$944.37</b>
<b>600 Supplies</b>				
610 General Supplies			7,707.53	7,707.53
630 Food			115.90	115.90
640 Books and Periodicals			49,174.00	49,174.00
650 Supplies & Fees – Technology Related			9,286.82	9,286.82
<b>Total Supplies</b>			<b>\$66,284.25</b>	<b>\$66,284.25</b>
<b>Total 1190 Federally-Funded Regular Programs</b>			<b>\$402,861.57</b>	<b>\$402,861.57</b>

**General Fund (10)**

**1200 Special Programs – Elementary / Secondary**

	<u>Elementary</u>	<u>Secondary</u>	<u>Federal</u>	<u>Total</u>
<b>100 Personnel Services – Salaries</b>				
100 Personnel Services – Salaries	3,097,400.65	2,798,048.26	22,781.35	5,918,230.26
<b>Total Personnel Services – Salaries</b>	<b>\$3,097,400.65</b>	<b>\$2,798,048.26</b>	<b>\$22,781.35</b>	<b>\$5,918,230.26</b>
<b>200 Personnel Services – Employee Benefits</b>				
210 Group Insurance – Contracted Provider	408,742.00	298,000.40	26.46	706,768.86
220 Social Security Contributions	226,412.73	207,500.02	1,132.29	435,045.04
230 PSERS Retirement Contributions	1,049,604.44	943,496.98	4,949.95	1,998,051.37
250 Unemployment Compensation	845.14	659.01		1,504.15
260 Workers' Compensation	16,266.28	15,561.00		31,827.28
270 Group Insurance – Self-Insurance	135,100.46	116,683.31		251,783.77
<b>Total Personnel Services – Employee Benefits</b>	<b>\$1,836,971.05</b>	<b>\$1,581,900.72</b>	<b>\$6,108.70</b>	<b>\$3,424,980.47</b>
<b>300 Purchased Professional and Technical Services</b>				
322 Professional Educational Services – Ius	73,091.06	295,744.83	204,346.57	573,182.46
330 Other Professional Services	828,646.67	1,143,249.69	402,068.73	2,373,965.09
340 Technical Services		689.04		689.04
390 Other Purchased Professional and Technical Services	75,949.22	101,821.42		177,770.64
<b>Total Purchased Professional and Technical Services</b>	<b>\$977,686.95</b>	<b>\$1,541,504.98</b>	<b>\$606,415.30</b>	<b>\$3,125,607.23</b>
<b>400 Purchased Property Services</b>				
430 Repairs and Maintenance Services		5,598.20		5,598.20
<b>Total Purchased Property Services</b>		<b>\$5,598.20</b>		<b>\$5,598.20</b>
<b>500 Other Purchased Services</b>				
562 Tuition To Pennsylvania Charter Schools	72,860.87	56,162.03		129,022.90
563 Tuition To Nonpublic Schools	683,765.50	2,267,714.25		2,951,479.75
567 Tuition To Approved Private Schools (APS) and PA Chartered Schools for the Deaf and Blind	210,660.22	212,021.27		422,681.49
594 IU Payment By Withholding for Institutionalized Children’s Programs – Special Classes		1,167.46		1,167.46
<b>Total Other Purchased Services</b>	<b>\$967,286.59</b>	<b>\$2,537,065.01</b>		<b>\$3,504,351.60</b>
<b>600 Supplies</b>				
610 General Supplies	17,747.63	7,931.72		25,679.35
630 Food	153.76	341.60		495.36
640 Books and Periodicals	42,999.09	16,509.45		59,508.54
650 Supplies & Fees – Technology Related	61,797.52	6,607.96		68,405.48
<b>Total Supplies</b>	<b>\$122,698.00</b>	<b>\$31,390.73</b>		<b>\$154,088.73</b>
<b>700 Property</b>				
762 Capitalized Equipment - Replacement		3,901.00		3,901.00
<b>Total Property</b>		<b>\$3,901.00</b>		<b>\$3,901.00</b>
<b>800 Other Objects</b>				
810 Dues and Fees	329.67			329.67
890 Miscellaneous Expenditures			70,333.00	70,333.00
<b>Total Other Objects</b>	<b>\$329.67</b>		<b>\$70,333.00</b>	<b>\$70,662.67</b>
<b>Total 1200 Special Programs – Elementary / Secondary</b>	<b>\$7,002,372.91</b>	<b>\$8,499,408.90</b>	<b>\$705,638.35</b>	<b>\$16,207,420.16</b>

**General Fund (10)**

**1210 Life Skills Support**

	<u>Elementary</u>	<u>Secondary</u>	<u>Federal</u>	<u>Total</u>
<b>100 Personnel Services – Salaries</b>				
100 Personnel Services – Salaries	146,225.02	42,499.98		188,725.00
<b>Total Personnel Services – Salaries</b>	<b>\$146,225.02</b>	<b>\$42,499.98</b>		<b>\$188,725.00</b>
<b>200 Personnel Services – Employee Benefits</b>				
210 Group Insurance – Contracted Provider	18,826.63	3,951.67		22,778.30
220 Social Security Contributions	10,992.41	3,348.16		14,340.57
230 PSERS Retirement Contributions	49,716.35	14,449.92		64,166.27
250 Unemployment Compensation	53.23	11.47		64.70
260 Workers' Compensation	759.05	336.28		1,095.33
270 Group Insurance – Self-Insurance	8,785.58	2,044.68		10,830.26
<b>Total Personnel Services – Employee Benefits</b>	<b>\$89,133.25</b>	<b>\$24,142.18</b>		<b>\$113,275.43</b>
<b>300 Purchased Professional and Technical Services</b>				
322 Professional Educational Services – lus		83,969.33		83,969.33
330 Other Professional Services		21,222.50		21,222.50
<b>Total Purchased Professional and Technical Services</b>		<b>\$105,191.83</b>		<b>\$105,191.83</b>
<b>600 Supplies</b>				
610 General Supplies		2,169.99		2,169.99
<b>Total Supplies</b>		<b>\$2,169.99</b>		<b>\$2,169.99</b>
<b>Total 1210 Life Skills Support</b>	<b>\$235,358.27</b>	<b>\$174,003.98</b>		<b>\$409,362.25</b>

**General Fund (10)**

**1220 Sensory Support**

**300 Purchased Professional and Technical Services**

	<u>Elementary</u>	<u>Secondary</u>	<u>Federal</u>	<u>Total</u>
322 Professional Educational Services – lus	382.00	3,935.64	172,556.79	176,874.43
330 Other Professional Services	218,413.45	213,537.41	54,558.00	486,508.86
<b>Total Purchased Professional and Technical Services</b>	<b>\$218,795.45</b>	<b>\$217,473.05</b>	<b>\$227,114.79</b>	<b>\$663,383.29</b>

**600 Supplies**

610 General Supplies	455.96			455.96
----------------------	--------	--	--	--------

<b>Total Supplies</b>	<b>\$455.96</b>			<b>\$455.96</b>
-----------------------	-----------------	--	--	-----------------

<b>Total 1220 Sensory Support</b>	<b>\$219,251.41</b>	<b>\$217,473.05</b>	<b>\$227,114.79</b>	<b>\$663,839.25</b>
-----------------------------------	---------------------	---------------------	---------------------	---------------------

**General Fund (10)**

**1230 Emotional Support**

	<u>Elementary</u>	<u>Secondary</u>	<u>Federal</u>	<u>Total</u>
<b>100 Personnel Services – Salaries</b>				
100 Personnel Services – Salaries	43,962.18	155,334.50		199,296.68
<b>Total Personnel Services – Salaries</b>	<b>\$43,962.18</b>	<b>\$155,334.50</b>		<b>\$199,296.68</b>
<b>200 Personnel Services – Employee Benefits</b>				
210 Group Insurance – Contracted Provider	3,474.49	13,401.44		16,875.93
220 Social Security Contributions	3,312.55	11,694.05		15,006.60
230 PSERS Retirement Contributions	14,930.87	52,767.80		67,698.67
250 Unemployment Compensation	10.78	38.99		49.77
260 Workers' Compensation	50.34	1,337.39		1,387.73
270 Group Insurance – Self-Insurance	1,849.98	6,985.51		8,835.49
<b>Total Personnel Services – Employee Benefits</b>	<b>\$23,629.01</b>	<b>\$86,225.18</b>		<b>\$109,854.19</b>
<b>300 Purchased Professional and Technical Services</b>				
322 Professional Educational Services – Ius	12,723.26	135,356.20	29,732.78	177,812.24
330 Other Professional Services	294,248.80	430,007.40	204,675.53	928,931.73
<b>Total Purchased Professional and Technical Services</b>	<b>\$306,972.06</b>	<b>\$565,363.60</b>	<b>\$234,408.31</b>	<b>\$1,106,743.97</b>
<b>500 Other Purchased Services</b>				
563 Tuition To Nonpublic Schools	162,538.93	1,194,970.31		1,357,509.24
<b>Total Other Purchased Services</b>	<b>\$162,538.93</b>	<b>\$1,194,970.31</b>		<b>\$1,357,509.24</b>
<b>600 Supplies</b>				
610 General Supplies	8,172.43	1,368.08		9,540.51
640 Books and Periodicals		86.81		86.81
650 Supplies & Fees – Technology Related		6,607.96		6,607.96
<b>Total Supplies</b>	<b>\$8,172.43</b>	<b>\$8,062.85</b>		<b>\$16,235.28</b>
<b>Total 1230 Emotional Support</b>	<b>\$545,274.61</b>	<b>\$2,009,956.44</b>	<b>\$234,408.31</b>	<b>\$2,789,639.36</b>

**General Fund (10)**

**1240 Academic Support**

	<u>Elementary</u>	<u>Secondary</u>	<u>Federal</u>	<u>Total</u>
<b>100 Personnel Services – Salaries</b>				
100 Personnel Services – Salaries	2,907,213.45	2,600,213.78	22,781.35	5,530,208.58
<b>Total Personnel Services – Salaries</b>	<b>\$2,907,213.45</b>	<b>\$2,600,213.78</b>	<b>\$22,781.35</b>	<b>\$5,530,208.58</b>
<b>200 Personnel Services – Employee Benefits</b>				
210 Group Insurance – Contracted Provider	386,440.88	280,647.29	26.46	667,114.63
220 Social Security Contributions	212,107.77	192,457.81	1,132.29	405,697.87
230 PSERS Retirement Contributions	984,957.22	876,279.26	4,949.95	1,866,186.43
250 Unemployment Compensation	781.13	608.55		1,389.68
260 Workers' Compensation	15,456.89	13,887.33		29,344.22
270 Group Insurance – Self-Insurance	124,464.90	107,653.12		232,118.02
<b>Total Personnel Services – Employee Benefits</b>	<b>\$1,724,208.79</b>	<b>\$1,471,533.36</b>	<b>\$6,108.70</b>	<b>\$3,201,850.85</b>
<b>300 Purchased Professional and Technical Services</b>				
322 Professional Educational Services – Ius	30,761.25	72,483.66		103,244.91
330 Other Professional Services	315,984.42	334,540.79	142,835.20	793,360.41
340 Technical Services		689.04		689.04
390 Other Purchased Professional and Technical Services	75,949.22	101,821.42		177,770.64
<b>Total Purchased Professional and Technical Services</b>	<b>\$422,694.89</b>	<b>\$509,534.91</b>	<b>\$142,835.20</b>	<b>\$1,075,065.00</b>
<b>400 Purchased Property Services</b>				
430 Repairs and Maintenance Services		5,598.20		5,598.20
<b>Total Purchased Property Services</b>		<b>\$5,598.20</b>		<b>\$5,598.20</b>
<b>500 Other Purchased Services</b>				
562 Tuition To Pennsylvania Charter Schools	72,860.87	56,162.03		129,022.90
563 Tuition To Nonpublic Schools	171,334.00	192,343.51		363,677.51
<b>Total Other Purchased Services</b>	<b>\$244,194.87</b>	<b>\$248,505.54</b>		<b>\$492,700.41</b>
<b>600 Supplies</b>				
610 General Supplies	9,119.24	4,393.65		13,512.89
630 Food	153.76	341.60		495.36
640 Books and Periodicals	42,999.09	16,422.64		59,421.73
650 Supplies & Fees – Technology Related	61,797.52			61,797.52
<b>Total Supplies</b>	<b>\$114,069.61</b>	<b>\$21,157.89</b>		<b>\$135,227.50</b>
<b>700 Property</b>				
762 Capitalized Equipment - Replacement		3,901.00		3,901.00
<b>Total Property</b>		<b>\$3,901.00</b>		<b>\$3,901.00</b>
<b>800 Other Objects</b>				
810 Dues and Fees	329.67			329.67
<b>Total Other Objects</b>	<b>\$329.67</b>			<b>\$329.67</b>
<b>Total 1240 Academic Support</b>	<b>\$5,412,711.28</b>	<b>\$4,860,444.68</b>	<b>\$171,725.25</b>	<b>\$10,444,881.21</b>

**General Fund (10)**

	<u>Elementary</u>	<u>Secondary</u>	<u>Federal</u>	<u>Total</u>
<b>1241 Learning Support – Public</b>				
<b>100 Personnel Services – Salaries</b>				
100 Personnel Services – Salaries	2,542,823.47	2,055,273.33	22,781.35	4,620,878.15
<b>Total Personnel Services – Salaries</b>	<b>\$2,542,823.47</b>	<b>\$2,055,273.33</b>	<b>\$22,781.35</b>	<b>\$4,620,878.15</b>
<b>200 Personnel Services – Employee Benefits</b>				
210 Group Insurance – Contracted Provider	327,252.54	208,010.07	26.46	535,289.07
220 Social Security Contributions	185,158.46	152,294.43	1,132.29	338,585.18
230 PSERS Retirement Contributions	861,255.16	693,440.89	4,949.95	1,559,646.00
250 Unemployment Compensation	651.76	422.06		1,073.82
260 Workers' Compensation	14,126.71	10,007.54		24,134.25
270 Group Insurance – Self-Insurance	99,009.86	75,198.11		174,207.97
<b>Total Personnel Services – Employee Benefits</b>	<b>\$1,487,454.49</b>	<b>\$1,139,373.10</b>	<b>\$6,108.70</b>	<b>\$2,632,936.29</b>
<b>300 Purchased Professional and Technical Services</b>				
322 Professional Educational Services – Ius	30,761.25	72,483.66		103,244.91
330 Other Professional Services	315,984.42	334,540.79	142,835.20	793,360.41
340 Technical Services		689.04		689.04
390 Other Purchased Professional and Technical Services	75,949.22	101,821.42		177,770.64
<b>Total Purchased Professional and Technical Services</b>	<b>\$422,694.89</b>	<b>\$509,534.91</b>	<b>\$142,835.20</b>	<b>\$1,075,065.00</b>
<b>400 Purchased Property Services</b>				
430 Repairs and Maintenance Services		5,598.20		5,598.20
<b>Total Purchased Property Services</b>		<b>\$5,598.20</b>		<b>\$5,598.20</b>
<b>500 Other Purchased Services</b>				
562 Tuition To Pennsylvania Charter Schools	72,860.87	56,162.03		129,022.90
563 Tuition To Nonpublic Schools	171,334.00	192,343.51		363,677.51
<b>Total Other Purchased Services</b>	<b>\$244,194.87</b>	<b>\$248,505.54</b>		<b>\$492,700.41</b>
<b>600 Supplies</b>				
610 General Supplies	8,547.28	4,316.04		12,863.32
630 Food	153.76	341.60		495.36
640 Books and Periodicals	42,738.52	16,402.55		59,141.07
650 Supplies & Fees – Technology Related	61,797.52			61,797.52
<b>Total Supplies</b>	<b>\$113,237.08</b>	<b>\$21,060.19</b>		<b>\$134,297.27</b>
<b>700 Property</b>				
762 Capitalized Equipment - Replacement		3,901.00		3,901.00
<b>Total Property</b>		<b>\$3,901.00</b>		<b>\$3,901.00</b>
<b>Total 1241 Learning Support – Public</b>	<b>\$4,810,404.80</b>	<b>\$3,983,246.27</b>	<b>\$171,725.25</b>	<b>\$8,965,376.32</b>

**General Fund (10)**

**1243 Gifted Support**

	<u>Elementary</u>	<u>Secondary</u>	<u>Federal</u>	<u>Total</u>
<b>100 Personnel Services – Salaries</b>				
100 Personnel Services – Salaries	364,389.98	544,940.45		909,330.43
<b>Total Personnel Services – Salaries</b>	<b>\$364,389.98</b>	<b>\$544,940.45</b>		<b>\$909,330.43</b>
<b>200 Personnel Services – Employee Benefits</b>				
210 Group Insurance – Contracted Provider	59,188.34	72,637.22		131,825.56
220 Social Security Contributions	26,949.31	40,163.38		67,112.69
230 PSERS Retirement Contributions	123,702.06	182,838.37		306,540.43
250 Unemployment Compensation	129.37	186.49		315.86
260 Workers' Compensation	1,330.18	3,879.79		5,209.97
270 Group Insurance – Self-Insurance	25,455.04	32,455.01		57,910.05
<b>Total Personnel Services – Employee Benefits</b>	<b>\$236,754.30</b>	<b>\$332,160.26</b>		<b>\$568,914.56</b>
<b>600 Supplies</b>				
610 General Supplies	571.96	77.61		649.57
640 Books and Periodicals	260.57	20.09		280.66
<b>Total Supplies</b>	<b>\$832.53</b>	<b>\$97.70</b>		<b>\$930.23</b>
<b>800 Other Objects</b>				
810 Dues and Fees	329.67			329.67
<b>Total Other Objects</b>	<b>\$329.67</b>			<b>\$329.67</b>
<b>Total 1243 Gifted Support</b>	<b>\$602,306.48</b>	<b>\$877,198.41</b>		<b>\$1,479,504.89</b>

**General Fund (10)**

	<u>Elementary</u>	<u>Secondary</u>	<u>Federal</u>	<u>Total</u>
<b>1270 Multi-Handicapped Support</b>				
<b>300 <u>Purchased Professional and Technical Services</u></b>				
330 Other Professional Services		143,941.59		143,941.59
<b>Total Purchased Professional and Technical Services</b>		<b>\$143,941.59</b>		<b>\$143,941.59</b>
<b>500 <u>Other Purchased Services</u></b>				
563 Tuition To Nonpublic Schools	349,892.57	880,400.43		1,230,293.00
<b>Total Other Purchased Services</b>	<b>\$349,892.57</b>	<b>\$880,400.43</b>		<b>\$1,230,293.00</b>
<b>800 <u>Other Objects</u></b>				
890 Miscellaneous Expenditures			70,333.00	70,333.00
<b>Total Other Objects</b>			<b>\$70,333.00</b>	<b>\$70,333.00</b>
<b>Total 1270 Multi-Handicapped Support</b>	<b>\$349,892.57</b>	<b>\$1,024,342.02</b>	<b>\$70,333.00</b>	<b>\$1,444,567.59</b>

General Fund (10)

1280 Early Intervention Support

300 Purchased Professional and Technical Services

322 Professional Educational Services – lus

**Total Purchased Professional and Technical Services**

**Total 1280 Early Intervention Support**

	<u>Elementary</u>	<u>Secondary</u>	<u>Federal</u>	<u>Total</u>
	29,224.55		2,057.00	31,281.55
	<b>\$29,224.55</b>		<b>\$2,057.00</b>	<b>\$31,281.55</b>
	<b>\$29,224.55</b>		<b>\$2,057.00</b>	<b>\$31,281.55</b>

General Fund (10)

1290 Special Programs - Other Support

500 Other Purchased Services

	<u>Elementary</u>	<u>Secondary</u>	<u>Federal</u>	<u>Total</u>
567 Tuition To Approved Private Schools (APS) and PA Chartered Schools for the Deaf and Blind	210,660.22	212,021.27		422,681.49
594 IU Payment By Withholding for Institutionalized Children's Programs – Special Classes		1,167.46		1,167.46
<b>Total Other Purchased Services</b>	<b>\$210,660.22</b>	<b>\$213,188.73</b>		<b>\$423,848.95</b>
<b>Total 1290 Special Programs - Other Support</b>	<b>\$210,660.22</b>	<b>\$213,188.73</b>		<b>\$423,848.95</b>

General Fund (10)

1300 Vocational Education

500 Other Purchased Services

564 Tuition To Career and Technology Centers

**Total Other Purchased Services**

**Total 1300 Vocational Education**

Elementary

Secondary

Federal

Total

529,183.20

529,183.20

**\$529,183.20**

**\$529,183.20**

**\$529,183.20**

**\$529,183.20**

**General Fund (10)**

	<u>Elementary</u>	<u>Secondary</u>	<u>Federal</u>	<u>Total</u>
<b>1400 Other Instructional Programs – Elementary / Secondary</b>				
<b>100 Personnel Services – Salaries</b>				
100 Personnel Services – Salaries	47,584.73	90,799.83	145,620.00	284,004.56
<b>Total Personnel Services – Salaries</b>	<b>\$47,584.73</b>	<b>\$90,799.83</b>	<b>\$145,620.00</b>	<b>\$284,004.56</b>
<b>200 Personnel Services – Employee Benefits</b>				
210 Group Insurance – Contracted Provider	1,189.64	1,054.97		2,244.61
220 Social Security Contributions	10,353.25	8,990.40		19,343.65
230 PSERS Retirement Contributions	47,443.03	41,307.23		88,750.26
270 Group Insurance – Self-Insurance	416.96	369.76		786.72
<b>Total Personnel Services – Employee Benefits</b>	<b>\$59,402.88</b>	<b>\$51,722.36</b>		<b>\$111,125.24</b>
<b>300 Purchased Professional and Technical Services</b>				
329 Professional Educational Services – Other	38,633.97		2,451.00	41,084.97
<b>Total Purchased Professional and Technical Services</b>	<b>\$38,633.97</b>		<b>\$2,451.00</b>	<b>\$41,084.97</b>
<b>600 Supplies</b>				
640 Books and Periodicals			6,790.52	6,790.52
<b>Total Supplies</b>			<b>\$6,790.52</b>	<b>\$6,790.52</b>
<b>Total 1400 Other Instructional Programs – Elementary / Secondary</b>	<b>\$145,621.58</b>	<b>\$142,522.19</b>	<b>\$154,861.52</b>	<b>\$443,005.29</b>

**General Fund (10)**

**1420 Summer School**

	<u>Elementary</u>	<u>Secondary</u>	<u>Federal</u>	<u>Total</u>
<b>100 Personnel Services – Salaries</b>				
100 Personnel Services – Salaries		1,650.00		1,650.00
<b>Total Personnel Services – Salaries</b>		<b>\$1,650.00</b>		<b>\$1,650.00</b>
<b>200 Personnel Services – Employee Benefits</b>				
220 Social Security Contributions		119.55		119.55
230 PSERS Retirement Contributions		561.00		561.00
<b>Total Personnel Services – Employee Benefits</b>		<b>\$680.55</b>		<b>\$680.55</b>
<b>300 Purchased Professional and Technical Services</b>				
329 Professional Educational Services – Other	38,633.97			38,633.97
<b>Total Purchased Professional and Technical Services</b>	<b>\$38,633.97</b>			<b>\$38,633.97</b>
<b>Total 1420 Summer School</b>	<b>\$38,633.97</b>	<b>\$2,330.55</b>		<b>\$40,964.52</b>

General Fund (10)

1430 Homebound Instruction

100 Personnel Services – Salaries

100 Personnel Services – Salaries

Total Personnel Services – Salaries

200 Personnel Services – Employee Benefits

220 Social Security Contributions

230 PSERS Retirement Contributions

Total Personnel Services – Employee Benefits

Total 1430 Homebound Instruction

	<u>Elementary</u>	<u>Secondary</u>	<u>Federal</u>	<u>Total</u>
		1,368.75		1,368.75
		<b>\$1,368.75</b>		<b>\$1,368.75</b>
		102.13		102.13
		467.50		467.50
		<b>\$569.63</b>		<b>\$569.63</b>
		<b>\$1,938.38</b>		<b>\$1,938.38</b>

**General Fund (10)**

1450 Instructional Programs Outside the Established School Day	<u>Elementary</u>	<u>Secondary</u>	<u>Federal</u>	<u>Total</u>
<b>100 Personnel Services – Salaries</b>				
100 Personnel Services – Salaries	47,584.73	87,781.08	145,620.00	280,985.81
<b>Total Personnel Services – Salaries</b>	<b>\$47,584.73</b>	<b>\$87,781.08</b>	<b>\$145,620.00</b>	<b>\$280,985.81</b>
<b>200 Personnel Services – Employee Benefits</b>				
210 Group Insurance – Contracted Provider	1,189.64	1,054.97		2,244.61
220 Social Security Contributions	10,353.25	8,768.72		19,121.97
230 PSERS Retirement Contributions	47,443.03	40,278.73		87,721.76
270 Group Insurance – Self-Insurance	416.96	369.76		786.72
<b>Total Personnel Services – Employee Benefits</b>	<b>\$59,402.88</b>	<b>\$50,472.18</b>		<b>\$109,875.06</b>
<b>300 Purchased Professional and Technical Services</b>				
329 Professional Educational Services – Other			2,451.00	2,451.00
<b>Total Purchased Professional and Technical Services</b>			<b>\$2,451.00</b>	<b>\$2,451.00</b>
<b>600 Supplies</b>				
640 Books and Periodicals			6,790.52	6,790.52
<b>Total Supplies</b>			<b>\$6,790.52</b>	<b>\$6,790.52</b>
<b>Total 1450 Instructional Programs Outside the Established School Day</b>	<b>\$106,987.61</b>	<b>\$138,253.26</b>	<b>\$154,861.52</b>	<b>\$400,102.39</b>

General Fund (10)

1500 Nonpublic School Programs

Elementary

Secondary

Federal

Total

500 Other Purchased Services

599 Other Miscellaneous Purchased Services

24,629.73

24,629.73

**Total Other Purchased Services**

**\$24,629.73**

**\$24,629.73**

**Total 1500 Nonpublic School Programs**

**\$24,629.73**

**\$24,629.73**

General Fund (10)

1600 Adult Education Programs

Elementary

Secondary

Federal

Total

500 Other Purchased Services

566 Tuition To Institutions of Higher Education and Technical Institutes

1,128,835.00

**Total Other Purchased Services**

**\$1,128,835.00**

**Total 1600 Adult Education Programs**

**\$1,128,835.00**

**General Fund (10)**

**1800 Pre-Kindergarten**

**100 Personnel Services – Salaries**

	<u>Elementary</u>	<u>Secondary</u>	<u>Federal</u>	<u>Total</u>
100 Personnel Services – Salaries			89,018.50	89,018.50
<b>Total Personnel Services – Salaries</b>			<b>\$89,018.50</b>	<b>\$89,018.50</b>

**200 Personnel Services – Employee Benefits**

210 Group Insurance – Contracted Provider			9,083.73	9,083.73
220 Social Security Contributions			4,824.80	6,434.65
230 PSERS Retirement Contributions			22,699.68	30,266.25
270 Group Insurance – Self-Insurance			4,816.78	4,816.78
<b>Total Personnel Services – Employee Benefits</b>			<b>\$41,424.99</b>	<b>\$50,601.41</b>

**600 Supplies**

610 General Supplies			649.50	676.00
<b>Total Supplies</b>			<b>\$649.50</b>	<b>\$676.00</b>

**Total 1800 Pre-Kindergarten**

			<b>\$131,092.99</b>	<b>\$140,295.91</b>
--	--	--	---------------------	---------------------

**General Fund (10)**

**1801 Pre-K Instruction**

**100 Personnel Services – Salaries**

	<u>Elementary</u>	<u>Secondary</u>	<u>Federal</u>	<u>Total</u>
100 Personnel Services – Salaries			89,018.50	89,018.50
<b>Total Personnel Services – Salaries</b>			<b>\$89,018.50</b>	<b>\$89,018.50</b>

**200 Personnel Services – Employee Benefits**

210 Group Insurance – Contracted Provider			9,083.73	9,083.73
220 Social Security Contributions			4,824.80	6,434.65
230 PSERS Retirement Contributions			22,699.68	30,266.25
270 Group Insurance – Self-Insurance			4,816.78	4,816.78
<b>Total Personnel Services – Employee Benefits</b>			<b>\$41,424.99</b>	<b>\$50,601.41</b>

**600 Supplies**

610 General Supplies			649.50	676.00
<b>Total Supplies</b>			<b>\$649.50</b>	<b>\$676.00</b>
<b>Total 1801 Pre-K Instruction</b>			<b>\$131,092.99</b>	<b>\$140,295.91</b>

**General Fund (10)**

**2000 Support Services**

**Total**

**100 Personnel Services – Salaries**

100 Personnel Services – Salaries 18,114,860.63

**Total Personnel Services – Salaries \$18,114,860.63**

**200 Personnel Services – Employee Benefits**

210 Group Insurance – Contracted Provider 3,077,097.49

220 Social Security Contributions 1,338,963.43

230 PSERS Retirement Contributions 6,072,886.59

250 Unemployment Compensation 3,983.88

260 Workers' Compensation 81,462.30

270 Group Insurance – Self-Insurance 1,101,199.27

292 Health Savings Accounts 5,519.79

299 All Other Employee Benefits 548,426.61

**Total Personnel Services – Employee Benefits \$12,229,539.36**

**300 Purchased Professional and Technical Services**

322 Professional Educational Services – Ius 450.00

329 Professional Educational Services – Other 123,459.68

330 Other Professional Services 1,419,014.22

340 Technical Services 398,263.07

360 Employee Training and Development Services 120,850.14

**Total Purchased Professional and Technical Services \$2,062,037.11**

**400 Purchased Property Services**

410 Cleaning Services 509,022.59

420 Utility Services 182,427.53

430 Repairs and Maintenance Services 667,946.28

440 Rentals 117,992.77

460 Extermination Services 13,704.99

490 Other Purchased Property Services 2,160.00

**Total Purchased Property Services \$1,493,254.16**

**500 Other Purchased Services**

513 Contracted Carriers 22,899.24

520 Insurance – General 91,239.00

522 Automotive Liability Insurance 53,521.00

523 General Property and Liability Insurance 266,569.39

530 Communications 247,928.41

541 Advertising Related to Federal Grant Awards 11,819.62

550 Printing and Binding 17,604.38

580 Travel 58,866.84

595 IU Payments By Withholding 79,043.33

**Total Other Purchased Services \$849,491.21**

**600 Supplies**

610 General Supplies 1,127,712.46

620 Energy 1,149,098.15

630 Food 65,713.03

640 Books and Periodicals 126,909.53

LEA : 125237603 Radnor Township SD

Printed 12/23/2024 5:59:54 PM

**General Fund (10)**

**2000 Support Services**

**Total**

**600 Supplies**

650 Supplies & Fees – Technology Related

181,762.61

**Total Supplies**

**\$2,651,195.78**

**700 Property**

752 Capital Equipment – Original and Additional

127,018.70

756 Capitalized Technology Equipment – Original

11,795.80

762 Capitalized Equipment - Replacement

41,178.68

766 Capitalized Technology Equipment – Replacement

23,778.75

768 Capitalized Technology Software - Replacement

10,419.42

**Total Property**

**\$214,191.35**

**800 Other Objects**

810 Dues and Fees

182,914.26

820 Claims and Judgments Against the LEA

71,700.00

899 Pass-Through Funds

25,000.00

**Total Other Objects**

**\$279,614.26**

**Total 2000 Support Services**

**\$37,894,183.86**

**General Fund (10)**

	<u>Elementary</u>	<u>Secondary</u>	<u>Federal</u>	<u>Total</u>
<b>2100 Support Services – Students</b>				
<b>100 Personnel Services – Salaries</b>				
100 Personnel Services – Salaries	1,058,479.03	1,694,855.66	280,763.98	3,323,738.45
<b>Total Personnel Services – Salaries</b>	<b>\$1,058,479.03</b>	<b>\$1,694,855.66</b>	<b>\$280,763.98</b>	<b>\$3,323,738.45</b>
<b>200 Personnel Services – Employee Benefits</b>				
210 Group Insurance – Contracted Provider	119,226.59	192,367.07	33,675.11	370,831.37
220 Social Security Contributions	77,187.60	138,880.73	3,117.63	243,801.25
230 PSERS Retirement Contributions	352,029.52	599,012.50	45,681.75	1,108,891.26
250 Unemployment Compensation	234.24	350.85		673.28
260 Workers' Compensation	5,954.99	9,896.54	1,385.04	18,689.43
270 Group Insurance – Self-Insurance	48,869.61	80,900.02	11,882.16	152,524.72
299 All Other Employee Benefits	11,648.93	11,648.93		24,863.84
<b>Total Personnel Services – Employee Benefits</b>	<b>\$615,151.48</b>	<b>\$1,033,056.64</b>	<b>\$95,741.69</b>	<b>\$1,920,275.15</b>
<b>300 Purchased Professional and Technical Services</b>				
330 Other Professional Services	178,851.37	211,415.21	97,376.16	487,642.74
<b>Total Purchased Professional and Technical Services</b>	<b>\$178,851.37</b>	<b>\$211,415.21</b>	<b>\$97,376.16</b>	<b>\$487,642.74</b>
<b>500 Other Purchased Services</b>				
580 Travel	2,418.36	3,128.41		6,003.95
<b>Total Other Purchased Services</b>	<b>\$2,418.36</b>	<b>\$3,128.41</b>		<b>\$6,003.95</b>
<b>600 Supplies</b>				
610 General Supplies	3,339.29	8,142.48	250.00	11,731.77
630 Food	1,103.85	1,155.02		2,258.87
640 Books and Periodicals	607.85	608.68		1,216.53
650 Supplies & Fees – Technology Related	9,931.08	10,100.07		20,031.15
<b>Total Supplies</b>	<b>\$14,982.07</b>	<b>\$20,006.25</b>	<b>\$250.00</b>	<b>\$35,238.32</b>
<b>700 Property</b>				
762 Capitalized Equipment - Replacement	494.98	494.99		989.97
<b>Total Property</b>	<b>\$494.98</b>	<b>\$494.99</b>		<b>\$989.97</b>
<b>800 Other Objects</b>				
810 Dues and Fees	837.50	2,216.50		3,054.00
<b>Total Other Objects</b>	<b>\$837.50</b>	<b>\$2,216.50</b>		<b>\$3,054.00</b>
<b>Total 2100 Support Services – Students</b>	<b>\$1,871,214.79</b>	<b>\$2,965,173.66</b>	<b>\$474,131.83</b>	<b>\$5,776,942.58</b>

**General Fund (10)**

**2110 Supervision of Student Services**

	<u>Elementary</u>	<u>Secondary</u>	<u>Federal</u>	<u>Total</u>
<b>100 Personnel Services – Salaries</b>				
100 Personnel Services – Salaries	369,884.13	369,883.86		739,767.99
<b>Total Personnel Services – Salaries</b>	<b>\$369,884.13</b>	<b>\$369,883.86</b>		<b>\$739,767.99</b>
<b>200 Personnel Services – Employee Benefits</b>				
210 Group Insurance – Contracted Provider	48,351.54	48,350.42		96,701.96
220 Social Security Contributions	25,617.89	25,617.48		51,235.37
230 PSERS Retirement Contributions	118,813.99	118,813.00		237,626.99
260 Workers' Compensation	2,258.69	2,258.35		4,517.04
270 Group Insurance – Self-Insurance	16,966.83	16,966.83		33,933.66
299 All Other Employee Benefits	11,648.93	11,648.93		23,297.86
<b>Total Personnel Services – Employee Benefits</b>	<b>\$223,657.87</b>	<b>\$223,655.01</b>		<b>\$447,312.88</b>
<b>300 Purchased Professional and Technical Services</b>				
330 Other Professional Services	170,706.37	168,708.21	97,376.16	436,790.74
<b>Total Purchased Professional and Technical Services</b>	<b>\$170,706.37</b>	<b>\$168,708.21</b>	<b>\$97,376.16</b>	<b>\$436,790.74</b>
<b>500 Other Purchased Services</b>				
580 Travel	2,418.36	2,040.40		4,458.76
<b>Total Other Purchased Services</b>	<b>\$2,418.36</b>	<b>\$2,040.40</b>		<b>\$4,458.76</b>
<b>600 Supplies</b>				
610 General Supplies	174.44	1,462.45		1,636.89
630 Food	819.50	577.69		1,397.19
640 Books and Periodicals		375.00		375.00
<b>Total Supplies</b>	<b>\$993.94</b>	<b>\$2,415.14</b>		<b>\$3,409.08</b>
<b>700 Property</b>				
762 Capitalized Equipment - Replacement	494.98	494.99		989.97
<b>Total Property</b>	<b>\$494.98</b>	<b>\$494.99</b>		<b>\$989.97</b>
<b>800 Other Objects</b>				
810 Dues and Fees	837.50	1,687.50		2,525.00
<b>Total Other Objects</b>	<b>\$837.50</b>	<b>\$1,687.50</b>		<b>\$2,525.00</b>
<b>Total 2110 Supervision of Student Services</b>	<b>\$768,993.15</b>	<b>\$768,885.11</b>	<b>\$97,376.16</b>	<b>\$1,635,254.42</b>

**General Fund (10)**

	<u>Elementary</u>	<u>Secondary</u>	<u>Federal</u>	<u>Total</u>
<b>2111 Supervision of Student Services – Head of Component</b>				
<b>100 Personnel Services – Salaries</b>				
100 Personnel Services – Salaries	206,127.31	206,127.30		412,254.61
<b>Total Personnel Services – Salaries</b>	<b>\$206,127.31</b>	<b>\$206,127.30</b>		<b>\$412,254.61</b>
<b>200 Personnel Services – Employee Benefits</b>				
210 Group Insurance – Contracted Provider	36,975.16	36,974.82		73,949.98
220 Social Security Contributions	14,924.20	14,924.44		29,848.64
230 PSERS Retirement Contributions	69,942.12	69,941.61		139,883.73
260 Workers' Compensation	1,045.08	1,045.40		2,090.48
270 Group Insurance – Self-Insurance	12,879.69	12,879.69		25,759.38
299 All Other Employee Benefits	4,481.10	4,481.10		8,962.20
<b>Total Personnel Services – Employee Benefits</b>	<b>\$140,247.35</b>	<b>\$140,247.06</b>		<b>\$280,494.41</b>
<b>Total 2111 Supervision of Student Services – Head of Component</b>	<b>\$346,374.66</b>	<b>\$346,374.36</b>		<b>\$692,749.02</b>

**General Fund (10)**

**2119 Supervision of Student Services – All Other Supervision**

	<u>Elementary</u>	<u>Secondary</u>	<u>Federal</u>	<u>Total</u>
<b>100 Personnel Services – Salaries</b>				
100 Personnel Services – Salaries	163,756.82	163,756.56		327,513.38
<b>Total Personnel Services – Salaries</b>	<b>\$163,756.82</b>	<b>\$163,756.56</b>		<b>\$327,513.38</b>
<b>200 Personnel Services – Employee Benefits</b>				
210 Group Insurance – Contracted Provider	11,376.38	11,375.60		22,751.98
220 Social Security Contributions	10,693.69	10,693.04		21,386.73
230 PSERS Retirement Contributions	48,871.87	48,871.39		97,743.26
260 Workers' Compensation	1,213.61	1,212.95		2,426.56
270 Group Insurance – Self-Insurance	4,087.14	4,087.14		8,174.28
299 All Other Employee Benefits	7,167.83	7,167.83		14,335.66
<b>Total Personnel Services – Employee Benefits</b>	<b>\$83,410.52</b>	<b>\$83,407.95</b>		<b>\$166,818.47</b>
<b>300 Purchased Professional and Technical Services</b>				
330 Other Professional Services	170,706.37	168,708.21	97,376.16	436,790.74
<b>Total Purchased Professional and Technical Services</b>	<b>\$170,706.37</b>	<b>\$168,708.21</b>	<b>\$97,376.16</b>	<b>\$436,790.74</b>
<b>500 Other Purchased Services</b>				
580 Travel	2,418.36	2,040.40		4,458.76
<b>Total Other Purchased Services</b>	<b>\$2,418.36</b>	<b>\$2,040.40</b>		<b>\$4,458.76</b>
<b>600 Supplies</b>				
610 General Supplies	174.44	1,462.45		1,636.89
630 Food	819.50	577.69		1,397.19
640 Books and Periodicals		375.00		375.00
<b>Total Supplies</b>	<b>\$993.94</b>	<b>\$2,415.14</b>		<b>\$3,409.08</b>
<b>700 Property</b>				
762 Capitalized Equipment - Replacement	494.98	494.99		989.97
<b>Total Property</b>	<b>\$494.98</b>	<b>\$494.99</b>		<b>\$989.97</b>
<b>800 Other Objects</b>				
810 Dues and Fees	837.50	1,687.50		2,525.00
<b>Total Other Objects</b>	<b>\$837.50</b>	<b>\$1,687.50</b>		<b>\$2,525.00</b>
<b>Total 2119 Supervision of Student Services – All Other Supervision</b>	<b>\$422,618.49</b>	<b>\$422,510.75</b>	<b>\$97,376.16</b>	<b>\$942,505.40</b>

**General Fund (10)**

	<u>Elementary</u>	<u>Secondary</u>	<u>Federal</u>	<u>Total</u>
<b>2120 Guidance Services</b>				
<b>100 Personnel Services – Salaries</b>				
100 Personnel Services – Salaries	406,634.61	902,088.44	187,469.56	1,496,192.61
<b>Total Personnel Services – Salaries</b>	<b>\$406,634.61</b>	<b>\$902,088.44</b>	<b>\$187,469.56</b>	<b>\$1,496,192.61</b>
<b>200 Personnel Services – Employee Benefits</b>				
210 Group Insurance – Contracted Provider	38,301.57	111,508.82	14,390.13	164,200.52
220 Social Security Contributions	30,630.53	81,324.06	(656.02)	111,298.57
230 PSERS Retirement Contributions	138,710.23	337,984.05	28,827.04	505,521.32
250 Unemployment Compensation	160.10	276.71		436.81
260 Workers' Compensation	1,737.68	5,076.04	703.14	7,516.86
270 Group Insurance – Self-Insurance	17,672.96	49,810.69	4,656.14	72,139.79
<b>Total Personnel Services – Employee Benefits</b>	<b>\$227,213.07</b>	<b>\$585,980.37</b>	<b>\$47,920.43</b>	<b>\$861,113.87</b>
<b>500 Other Purchased Services</b>				
580 Travel		163.48		163.48
<b>Total Other Purchased Services</b>		<b>\$163.48</b>		<b>\$163.48</b>
<b>600 Supplies</b>				
610 General Supplies	1,319.29	2,136.30		3,455.59
630 Food	284.35	577.33		861.68
640 Books and Periodicals	607.85	233.68		841.53
<b>Total Supplies</b>	<b>\$2,211.49</b>	<b>\$2,947.31</b>		<b>\$5,158.80</b>
<b>800 Other Objects</b>				
810 Dues and Fees		529.00		529.00
<b>Total Other Objects</b>		<b>\$529.00</b>		<b>\$529.00</b>
<b>Total 2120 Guidance Services</b>	<b>\$636,059.17</b>	<b>\$1,491,708.60</b>	<b>\$235,389.99</b>	<b>\$2,363,157.76</b>

**General Fund (10)**

	<u>Elementary</u>	<u>Secondary</u>	<u>Federal</u>	<u>Total</u>
<b>2140 Psychological Services</b>				
<b>100 Personnel Services – Salaries</b>				
100 Personnel Services – Salaries	281,960.29	422,883.36		704,843.65
<b>Total Personnel Services – Salaries</b>	<b>\$281,960.29</b>	<b>\$422,883.36</b>		<b>\$704,843.65</b>
<b>200 Personnel Services – Employee Benefits</b>				
210 Group Insurance – Contracted Provider	32,573.48	32,507.83		65,081.31
220 Social Security Contributions	20,939.18	31,939.19		52,878.37
230 PSERS Retirement Contributions	94,505.30	142,215.45		236,720.75
250 Unemployment Compensation	74.14	74.14		148.28
260 Workers' Compensation	1,958.62	2,562.15		4,520.77
270 Group Insurance – Self-Insurance	14,229.82	14,122.50		28,352.32
<b>Total Personnel Services – Employee Benefits</b>	<b>\$164,280.54</b>	<b>\$223,421.26</b>		<b>\$387,701.80</b>
<b>300 Purchased Professional and Technical Services</b>				
330 Other Professional Services	8,145.00	42,707.00		50,852.00
<b>Total Purchased Professional and Technical Services</b>	<b>\$8,145.00</b>	<b>\$42,707.00</b>		<b>\$50,852.00</b>
<b>500 Other Purchased Services</b>				
580 Travel		924.53		924.53
<b>Total Other Purchased Services</b>		<b>\$924.53</b>		<b>\$924.53</b>
<b>600 Supplies</b>				
610 General Supplies	1,845.56	4,543.73		6,389.29
650 Supplies & Fees – Technology Related	9,931.08	10,100.07		20,031.15
<b>Total Supplies</b>	<b>\$11,776.64</b>	<b>\$14,643.80</b>		<b>\$26,420.44</b>
<b>Total 2140 Psychological Services</b>	<b>\$466,162.47</b>	<b>\$704,579.95</b>		<b>\$1,170,742.42</b>

**General Fund (10)**

**2160 Social Work Services**

**100 Personnel Services – Salaries**

	<u>Elementary</u>	<u>Secondary</u>	<u>Federal</u>	<u>Total</u>
100 Personnel Services – Salaries			93,294.42	323,950.00

<b>Total Personnel Services – Salaries</b>			<b>\$93,294.42</b>	<b>\$323,950.00</b>
--	--	--	--------------------	---------------------

**200 Personnel Services – Employee Benefits**

210 Group Insurance – Contracted Provider			19,284.98	31,553.32
220 Social Security Contributions			3,773.65	23,994.82
230 PSERS Retirement Contributions			16,854.71	108,953.09
250 Unemployment Compensation				88.19
260 Workers' Compensation			681.90	1,937.39
270 Group Insurance – Self-Insurance			7,226.02	14,538.29

<b>Total Personnel Services – Employee Benefits</b>			<b>\$47,821.26</b>	<b>\$181,065.10</b>
---	--	--	--------------------	---------------------

**500 Other Purchased Services**

580 Travel				457.18
------------	--	--	--	--------

<b>Total Other Purchased Services</b>				<b>\$457.18</b>
---------------------------------------	--	--	--	-----------------

**600 Supplies**

610 General Supplies			250.00	250.00
----------------------	--	--	--------	--------

<b>Total Supplies</b>			<b>\$250.00</b>	<b>\$250.00</b>
-----------------------	--	--	-----------------	-----------------

<b>Total 2160 Social Work Services</b>			<b>\$141,365.68</b>	<b>\$505,722.28</b>
--	--	--	---------------------	---------------------

**General Fund (10)**

**2170 Student Accounting Services**

**100 Personnel Services – Salaries**

	<u>Elementary</u>	<u>Secondary</u>	<u>Federal</u>	<u>Total</u>
100 Personnel Services – Salaries				58,984.20
<b>Total Personnel Services – Salaries</b>				<b>\$58,984.20</b>
<b>200 Personnel Services – Employee Benefits</b>				
210 Group Insurance – Contracted Provider				13,294.26
220 Social Security Contributions				4,394.12
230 PSERS Retirement Contributions				20,069.11
260 Workers' Compensation				197.37
270 Group Insurance – Self-Insurance				3,560.66
299 All Other Employee Benefits				1,565.98
<b>Total Personnel Services – Employee Benefits</b>				<b>\$43,081.50</b>
<b>Total 2170 Student Accounting Services</b>				<b>\$102,065.70</b>

**General Fund (10)**

	<u>Elementary</u>	<u>Secondary</u>	<u>Federal</u>	<u>Total</u>
<b>2200 Support Services – Instructional Staff</b>				
<b>100 Personnel Services – Salaries</b>				
100 Personnel Services – Salaries	1,497,602.54	992,117.59		2,489,720.13
<b>Total Personnel Services – Salaries</b>	<b>\$1,497,602.54</b>	<b>\$992,117.59</b>		<b>\$2,489,720.13</b>
<b>200 Personnel Services – Employee Benefits</b>				
210 Group Insurance – Contracted Provider	219,344.03	131,154.92		350,498.95
220 Social Security Contributions	107,551.54	70,611.15		178,162.69
230 PSERS Retirement Contributions	498,399.97	329,760.47		828,160.44
250 Unemployment Compensation	263.77	122.14		385.91
260 Workers' Compensation	8,238.03	4,835.73		13,073.76
270 Group Insurance – Self-Insurance	83,527.14	51,763.34		135,290.48
299 All Other Employee Benefits	97,416.20	88,302.48		185,718.68
<b>Total Personnel Services – Employee Benefits</b>	<b>\$1,014,740.68</b>	<b>\$676,550.23</b>		<b>\$1,691,290.91</b>
<b>300 Purchased Professional and Technical Services</b>				
329 Professional Educational Services – Other	65,375.69	37,530.99	20,553.00	123,459.68
360 Employee Training and Development Services	23,941.25	48,047.82	26,380.97	98,370.04
<b>Total Purchased Professional and Technical Services</b>	<b>\$89,316.94</b>	<b>\$85,578.81</b>	<b>\$46,933.97</b>	<b>\$221,829.72</b>
<b>400 Purchased Property Services</b>				
430 Repairs and Maintenance Services	29,563.12	60,716.31		90,279.43
<b>Total Purchased Property Services</b>	<b>\$29,563.12</b>	<b>\$60,716.31</b>		<b>\$90,279.43</b>
<b>500 Other Purchased Services</b>				
580 Travel	5,739.54	10,929.74		16,669.28
<b>Total Other Purchased Services</b>	<b>\$5,739.54</b>	<b>\$10,929.74</b>		<b>\$16,669.28</b>
<b>600 Supplies</b>				
610 General Supplies	28,653.23	17,461.63		46,114.86
630 Food	7,297.53	5,104.55		12,402.08
640 Books and Periodicals	72,621.00	43,244.86		115,865.86
650 Supplies & Fees – Technology Related	1,811.50	1,811.50		3,623.00
<b>Total Supplies</b>	<b>\$110,383.26</b>	<b>\$67,622.54</b>		<b>\$178,005.80</b>
<b>800 Other Objects</b>				
810 Dues and Fees	1,056.00	1,574.56		2,630.56
<b>Total Other Objects</b>	<b>\$1,056.00</b>	<b>\$1,574.56</b>		<b>\$2,630.56</b>
<b>Total 2200 Support Services – Instructional Staff</b>	<b>\$2,748,402.08</b>	<b>\$1,895,089.78</b>	<b>\$46,933.97</b>	<b>\$4,690,425.83</b>

**General Fund (10)**

	<u>Elementary</u>	<u>Secondary</u>	<u>Federal</u>	<u>Total</u>
<b>2220 Technology Support Services</b>				
<b>100 Personnel Services – Salaries</b>				
100 Personnel Services – Salaries	233,298.52	131,116.65		364,415.17
<b>Total Personnel Services – Salaries</b>	<b>\$233,298.52</b>	<b>\$131,116.65</b>		<b>\$364,415.17</b>
<b>200 Personnel Services – Employee Benefits</b>				
210 Group Insurance – Contracted Provider	48,774.43	35,276.28		84,050.71
220 Social Security Contributions	17,438.70	9,648.72		27,087.42
230 PSERS Retirement Contributions	78,891.44	44,560.49		123,451.93
250 Unemployment Compensation	22.36	22.36		44.72
260 Workers' Compensation	1,441.07	996.67		2,437.74
270 Group Insurance – Self-Insurance	19,241.34	11,344.81		30,586.15
<b>Total Personnel Services – Employee Benefits</b>	<b>\$165,809.34</b>	<b>\$101,849.33</b>		<b>\$267,658.67</b>
<b>500 Other Purchased Services</b>				
580 Travel	906.16	789.00		1,695.16
<b>Total Other Purchased Services</b>	<b>\$906.16</b>	<b>\$789.00</b>		<b>\$1,695.16</b>
<b>600 Supplies</b>				
630 Food	111.62			111.62
640 Books and Periodicals	21.99			21.99
<b>Total Supplies</b>	<b>\$133.61</b>			<b>\$133.61</b>
<b>Total 2220 Technology Support Services</b>	<b>\$400,147.63</b>	<b>\$233,754.98</b>		<b>\$633,902.61</b>

**General Fund (10)**

	<u>Elementary</u>	<u>Secondary</u>	<u>Federal</u>	<u>Total</u>
<b>2250 School Library Services</b>				
<b>100 Personnel Services – Salaries</b>				
100 Personnel Services – Salaries	476,385.06	245,121.27		721,506.33
<b>Total Personnel Services – Salaries</b>	<b>\$476,385.06</b>	<b>\$245,121.27</b>		<b>\$721,506.33</b>
<b>200 Personnel Services – Employee Benefits</b>				
210 Group Insurance – Contracted Provider	110,265.66	38,806.86		149,072.52
220 Social Security Contributions	34,695.67	18,210.23		52,905.90
230 PSERS Retirement Contributions	159,872.98	82,832.55		242,705.53
250 Unemployment Compensation	169.76	76.00		245.76
260 Workers' Compensation	2,569.25	1,693.07		4,262.32
270 Group Insurance – Self-Insurance	38,571.82	17,565.45		56,137.27
<b>Total Personnel Services – Employee Benefits</b>	<b>\$346,145.14</b>	<b>\$159,184.16</b>		<b>\$505,329.30</b>
<b>400 Purchased Property Services</b>				
430 Repairs and Maintenance Services	707.47	35,017.22		35,724.69
<b>Total Purchased Property Services</b>	<b>\$707.47</b>	<b>\$35,017.22</b>		<b>\$35,724.69</b>
<b>600 Supplies</b>				
610 General Supplies	13,647.81	5,192.69		18,840.50
640 Books and Periodicals	36,585.85	42,203.22		78,789.07
<b>Total Supplies</b>	<b>\$50,233.66</b>	<b>\$47,395.91</b>		<b>\$97,629.57</b>
<b>800 Other Objects</b>				
810 Dues and Fees		110.00		110.00
<b>Total Other Objects</b>		<b>\$110.00</b>		<b>\$110.00</b>
<b>Total 2250 School Library Services</b>	<b>\$873,471.33</b>	<b>\$486,828.56</b>		<b>\$1,360,299.89</b>

**General Fund (10)**

**2260 Instruction and Curriculum Development Services**

	<u>Elementary</u>	<u>Secondary</u>	<u>Federal</u>	<u>Total</u>
<b>100 Personnel Services – Salaries</b>				
100 Personnel Services – Salaries	350,295.72	348,842.34		699,138.06
<b>Total Personnel Services – Salaries</b>	<b>\$350,295.72</b>	<b>\$348,842.34</b>		<b>\$699,138.06</b>
<b>200 Personnel Services – Employee Benefits</b>				
210 Group Insurance – Contracted Provider	22,263.29	40,651.83		62,915.12
220 Social Security Contributions	22,825.50	22,865.91		45,691.41
230 PSERS Retirement Contributions	111,842.97	111,843.13		223,686.10
260 Workers' Compensation	1,838.97	1,512.04		3,351.01
270 Group Insurance – Self-Insurance	8,503.86	15,063.47		23,567.33
299 All Other Employee Benefits	13,695.43	13,545.13		27,240.56
<b>Total Personnel Services – Employee Benefits</b>	<b>\$180,970.02</b>	<b>\$205,481.51</b>		<b>\$386,451.53</b>
<b>500 Other Purchased Services</b>				
580 Travel	409.00	543.94		952.94
<b>Total Other Purchased Services</b>	<b>\$409.00</b>	<b>\$543.94</b>		<b>\$952.94</b>
<b>600 Supplies</b>				
630 Food	873.09	104.12		977.21
650 Supplies & Fees – Technology Related	1,811.50	1,811.50		3,623.00
<b>Total Supplies</b>	<b>\$2,684.59</b>	<b>\$1,915.62</b>		<b>\$4,600.21</b>
<b>800 Other Objects</b>				
810 Dues and Fees	31.00	282.56		313.56
<b>Total Other Objects</b>	<b>\$31.00</b>	<b>\$282.56</b>		<b>\$313.56</b>
<b>Total 2260 Instruction and Curriculum Development Services</b>	<b>\$534,390.33</b>	<b>\$557,065.97</b>		<b>\$1,091,456.30</b>

**General Fund (10)**

<b>2270 Instructional Staff Professional Development Services</b>	<u>Elementary</u>	<u>Secondary</u>	<u>Federal</u>	<u>Total</u>
<b>100 Personnel Services – Salaries</b>				
100 Personnel Services – Salaries	377,567.98	180,750.54		558,318.52
<b>Total Personnel Services – Salaries</b>	<b>\$377,567.98</b>	<b>\$180,750.54</b>		<b>\$558,318.52</b>
<b>200 Personnel Services – Employee Benefits</b>				
210 Group Insurance – Contracted Provider	35,815.34	13,188.98		49,004.32
220 Social Security Contributions	28,148.64	13,459.04		41,607.68
230 PSERS Retirement Contributions	127,370.62	61,157.99		188,528.61
250 Unemployment Compensation	71.65	23.78		95.43
260 Workers' Compensation	2,151.41	336.30		2,487.71
270 Group Insurance – Self-Insurance	16,400.95	6,641.47		23,042.42
299 All Other Employee Benefits	83,720.77	74,757.35		158,478.12
<b>Total Personnel Services – Employee Benefits</b>	<b>\$293,679.38</b>	<b>\$169,564.91</b>		<b>\$463,244.29</b>
<b>300 Purchased Professional and Technical Services</b>				
329 Professional Educational Services – Other	65,375.69	37,530.99	20,553.00	123,459.68
360 Employee Training and Development Services	23,941.25	48,047.82	26,380.97	98,370.04
<b>Total Purchased Professional and Technical Services</b>	<b>\$89,316.94</b>	<b>\$85,578.81</b>	<b>\$46,933.97</b>	<b>\$221,829.72</b>
<b>400 Purchased Property Services</b>				
430 Repairs and Maintenance Services	28,855.65	25,699.09		54,554.74
<b>Total Purchased Property Services</b>	<b>\$28,855.65</b>	<b>\$25,699.09</b>		<b>\$54,554.74</b>
<b>500 Other Purchased Services</b>				
580 Travel	4,424.38	9,596.80		14,021.18
<b>Total Other Purchased Services</b>	<b>\$4,424.38</b>	<b>\$9,596.80</b>		<b>\$14,021.18</b>
<b>600 Supplies</b>				
610 General Supplies	15,005.42	12,268.94		27,274.36
630 Food	6,312.82	5,000.43		11,313.25
640 Books and Periodicals	36,013.16	1,041.64		37,054.80
<b>Total Supplies</b>	<b>\$57,331.40</b>	<b>\$18,311.01</b>		<b>\$75,642.41</b>
<b>800 Other Objects</b>				
810 Dues and Fees	1,025.00	1,182.00		2,207.00
<b>Total Other Objects</b>	<b>\$1,025.00</b>	<b>\$1,182.00</b>		<b>\$2,207.00</b>
<b>Total 2270 Instructional Staff Professional Development Services</b>	<b>\$852,200.73</b>	<b>\$490,683.16</b>	<b>\$46,933.97</b>	<b>\$1,389,817.86</b>

**General Fund (10)**

	<u>Elementary</u>	<u>Secondary</u>	<u>Federal</u>	<u>Total</u>
<b>2290 Other Instructional Staff Services</b>				
<b>100 Personnel Services – Salaries</b>				
100 Personnel Services – Salaries	60,055.26	86,286.79		146,342.05
<b>Total Personnel Services – Salaries</b>	<b>\$60,055.26</b>	<b>\$86,286.79</b>		<b>\$146,342.05</b>
<b>200 Personnel Services – Employee Benefits</b>				
210 Group Insurance – Contracted Provider	2,225.31	3,230.97		5,456.28
220 Social Security Contributions	4,443.03	6,427.25		10,870.28
230 PSERS Retirement Contributions	20,421.96	29,366.31		49,788.27
260 Workers' Compensation	237.33	297.65		534.98
270 Group Insurance – Self-Insurance	809.17	1,148.14		1,957.31
<b>Total Personnel Services – Employee Benefits</b>	<b>\$28,136.80</b>	<b>\$40,470.32</b>		<b>\$68,607.12</b>
<b>Total 2290 Other Instructional Staff Services</b>	<b>\$88,192.06</b>	<b>\$126,757.11</b>		<b>\$214,949.17</b>

**General Fund (10)**

	<u>Elementary</u>	<u>Secondary</u>	<u>Federal</u>	<u>Total</u>
<b>2300 Support Services – Administration</b>				
<b>100 Personnel Services – Salaries</b>				
100 Personnel Services – Salaries	1,099,135.77	1,199,596.64	117,855.77	3,589,137.45
<b>Total Personnel Services – Salaries</b>	<b>\$1,099,135.77</b>	<b>\$1,199,596.64</b>	<b>\$117,855.77</b>	<b>\$3,589,137.45</b>
<b>200 Personnel Services – Employee Benefits</b>				
210 Group Insurance – Contracted Provider	142,705.17	187,891.35	12,123.68	494,494.96
220 Social Security Contributions	87,451.35	95,711.78	3,876.87	271,693.29
230 PSERS Retirement Contributions	404,884.93	435,616.43		1,230,454.79
250 Unemployment Compensation	21.49	12.00		33.49
260 Workers' Compensation	4,121.09	5,293.31	803.53	14,136.53
270 Group Insurance – Self-Insurance	51,400.39	71,312.26	4,533.44	179,912.46
299 All Other Employee Benefits	37,518.31	40,826.08		125,825.67
<b>Total Personnel Services – Employee Benefits</b>	<b>\$728,102.73</b>	<b>\$836,663.21</b>	<b>\$21,337.52</b>	<b>\$2,316,551.19</b>
<b>300 Purchased Professional and Technical Services</b>				
322 Professional Educational Services – Ius				450.00
330 Other Professional Services		9,149.15		252,432.39
340 Technical Services				170.00
<b>Total Purchased Professional and Technical Services</b>		<b>\$9,149.15</b>		<b>\$253,052.39</b>
<b>400 Purchased Property Services</b>				
430 Repairs and Maintenance Services		1,688.00		52,038.74
440 Rentals	38,838.74	63,729.63		102,568.37
<b>Total Purchased Property Services</b>	<b>\$38,838.74</b>	<b>\$65,417.63</b>		<b>\$154,607.11</b>
<b>500 Other Purchased Services</b>				
520 Insurance – General				14,303.50
530 Communications				22,927.94
541 Advertising Related to Federal Grant Awards				10,257.97
550 Printing and Binding		8,647.55		11,268.07
580 Travel	666.48	1,082.17		19,890.72
<b>Total Other Purchased Services</b>	<b>\$666.48</b>	<b>\$9,729.72</b>		<b>\$78,648.20</b>
<b>600 Supplies</b>				
610 General Supplies	4,526.82	38,718.84		88,372.09
630 Food	1,502.03	20,030.53		46,529.08
640 Books and Periodicals	27.71	2,290.76		9,767.14
<b>Total Supplies</b>	<b>\$6,056.56</b>	<b>\$61,040.13</b>		<b>\$144,668.31</b>
<b>700 Property</b>				
752 Capital Equipment – Original and Additional				2,844.32
756 Capitalized Technology Equipment – Original				1,999.95
762 Capitalized Equipment - Replacement				17,618.15
<b>Total Property</b>				<b>\$22,462.42</b>
<b>800 Other Objects</b>				
810 Dues and Fees	3,408.16	2,607.52		64,087.79
820 Claims and Judgments Against the LEA				71,700.00

General Fund (10)

2300 Support Services – Administration

	<u>Elementary</u>	<u>Secondary</u>	<u>Federal</u>	<u>Total</u>
Total Other Objects	\$3,408.16	\$2,607.52		\$135,787.79
Total 2300 Support Services – Administration	\$1,876,208.44	\$2,184,204.00	\$139,193.29	\$6,694,914.86

**General Fund (10)**

**2310 Board Services**

	<u>Elementary</u>	<u>Secondary</u>	<u>Federal</u>	<u>Total</u>
<b>100 Personnel Services – Salaries</b>				
100 Personnel Services – Salaries				277.83
<b>Total Personnel Services – Salaries</b>				<b>\$277.83</b>
<b>200 Personnel Services – Employee Benefits</b>				
220 Social Security Contributions				21.05
230 PSERS Retirement Contributions				94.46
<b>Total Personnel Services – Employee Benefits</b>				<b>\$115.51</b>
<b>300 Purchased Professional and Technical Services</b>				
330 Other Professional Services				41,425.00
<b>Total Purchased Professional and Technical Services</b>				<b>\$41,425.00</b>
<b>500 Other Purchased Services</b>				
520 Insurance – General				12,684.50
541 Advertising Related to Federal Grant Awards				1,755.24
<b>Total Other Purchased Services</b>				<b>\$14,439.74</b>
<b>600 Supplies</b>				
610 General Supplies				3,668.15
630 Food				13,993.03
<b>Total Supplies</b>				<b>\$17,661.18</b>
<b>800 Other Objects</b>				
810 Dues and Fees				26,378.04
820 Claims and Judgments Against the LEA				65,200.00
<b>Total Other Objects</b>				<b>\$91,578.04</b>
<b>Total 2310 Board Services</b>				<b>\$165,497.30</b>

General Fund (10)

2320 Board Treasurer Services

Elementary

Secondary

Federal

Total

500 Other Purchased Services

520 Insurance – General

1,619.00

**Total Other Purchased Services**

**\$1,619.00**

**Total 2320 Board Treasurer Services**

**\$1,619.00**

**General Fund (10)**

**2330 Tax Assessment and Collection Services**

Elementary

Secondary

Federal

Total

**100 Personnel Services – Salaries**

100 Personnel Services – Salaries

43,259.96

**Total Personnel Services – Salaries**

**\$43,259.96**

**200 Personnel Services – Employee Benefits**

210 Group Insurance – Contracted Provider

10,236.42

220 Social Security Contributions

3,083.41

230 PSERS Retirement Contributions

14,641.87

260 Workers' Compensation

214.67

270 Group Insurance – Self-Insurance

3,658.82

299 All Other Employee Benefits

1,500.00

**Total Personnel Services – Employee Benefits**

**\$33,335.19**

**500 Other Purchased Services**

530 Communications

22,927.94

**Total Other Purchased Services**

**\$22,927.94**

**600 Supplies**

610 General Supplies

984.20

**Total Supplies**

**\$984.20**

**Total 2330 Tax Assessment and Collection Services**

**\$100,507.29**

General Fund (10)

2340 Staff Relations and Negotiations Services

Elementary

Secondary

Federal

Total

100 Personnel Services – Salaries

100 Personnel Services – Salaries 581,447.24

**Total Personnel Services – Salaries \$581,447.24**

200 Personnel Services – Employee Benefits

210 Group Insurance – Contracted Provider 90,755.74

220 Social Security Contributions 39,897.78

230 PSERS Retirement Contributions 189,925.37

260 Workers' Compensation 1,371.79

270 Group Insurance – Self-Insurance 30,979.29

299 All Other Employee Benefits 29,000.00

**Total Personnel Services – Employee Benefits \$381,929.97**

300 Purchased Professional and Technical Services

322 Professional Educational Services – Ius 450.00

330 Other Professional Services 44,790.62

340 Technical Services 170.00

**Total Purchased Professional and Technical Services \$45,410.62**

400 Purchased Property Services

430 Repairs and Maintenance Services 26,000.74

**Total Purchased Property Services \$26,000.74**

500 Other Purchased Services

541 Advertising Related to Federal Grant Awards 8,116.27

550 Printing and Binding 55.00

580 Travel 9,337.97

**Total Other Purchased Services \$17,509.24**

600 Supplies

610 General Supplies 30,150.00

630 Food 5,413.33

640 Books and Periodicals 92.00

**Total Supplies \$35,655.33**

700 Property

752 Capital Equipment – Original and Additional 135.99

756 Capitalized Technology Equipment – Original 1,999.95

**Total Property \$2,135.94**

800 Other Objects

810 Dues and Fees 7,927.75

**Total Other Objects \$7,927.75**

**Total 2340 Staff Relations and Negotiations Services \$1,098,016.83**

General Fund (10)

2350 Legal and Accounting Services

Elementary

Secondary

Federal

Total

300 Purchased Professional and Technical Services

330 Other Professional Services

154,668.18

**Total Purchased Professional and Technical Services**

**\$154,668.18**

800 Other Objects

820 Claims and Judgments Against the LEA

6,500.00

**Total Other Objects**

**\$6,500.00**

**Total 2350 Legal and Accounting Services**

**\$161,168.18**

**General Fund (10)**

**2360 Office of the Superintendent / Executive Director Services**

Elementary                      Secondary                      Federal                      Total

<b>100 Personnel Services – Salaries</b>				
100 Personnel Services – Salaries				376,491.55
<b>Total Personnel Services – Salaries</b>				<b>\$376,491.55</b>
<b>200 Personnel Services – Employee Benefits</b>				
210 Group Insurance – Contracted Provider				34,089.30
220 Social Security Contributions				28,690.41
230 PSERS Retirement Contributions				127,762.00
260 Workers' Compensation				1,448.87
270 Group Insurance – Self-Insurance				10,710.63
299 All Other Employee Benefits				16,981.28
<b>Total Personnel Services – Employee Benefits</b>				<b>\$219,682.49</b>
<b>300 Purchased Professional and Technical Services</b>				
330 Other Professional Services				250.00
<b>Total Purchased Professional and Technical Services</b>				<b>\$250.00</b>
<b>500 Other Purchased Services</b>				
580 Travel				5,685.12
<b>Total Other Purchased Services</b>				<b>\$5,685.12</b>
<b>600 Supplies</b>				
610 General Supplies				9,402.35
630 Food				5,549.05
640 Books and Periodicals				6,697.45
<b>Total Supplies</b>				<b>\$21,648.85</b>
<b>800 Other Objects</b>				
810 Dues and Fees				14,129.32
<b>Total Other Objects</b>				<b>\$14,129.32</b>
<b>Total 2360 Office of the Superintendent / Executive Director Services</b>				<b>\$637,887.33</b>

**General Fund (10)**

**2370 Community Relations Services**

Elementary                      Secondary                      Federal                      Total

<b>100</b>	<b><u>Personnel Services – Salaries</u></b>			
	100 Personnel Services – Salaries			168,617.51
<b>Total Personnel Services – Salaries</b>				<b>\$168,617.51</b>
<b>200</b>	<b><u>Personnel Services – Employee Benefits</u></b>			
	210 Group Insurance – Contracted Provider			16,693.30
	220 Social Security Contributions			12,775.47
	230 PSERS Retirement Contributions			56,694.97
	260 Workers' Compensation			883.27
	270 Group Insurance – Self-Insurance			7,317.63
<b>Total Personnel Services – Employee Benefits</b>				<b>\$94,364.64</b>
<b>300</b>	<b><u>Purchased Professional and Technical Services</u></b>			
	330 Other Professional Services			2,149.44
<b>Total Purchased Professional and Technical Services</b>				<b>\$2,149.44</b>
<b>400</b>	<b><u>Purchased Property Services</u></b>			
	430 Repairs and Maintenance Services			24,350.00
<b>Total Purchased Property Services</b>				<b>\$24,350.00</b>
<b>500</b>	<b><u>Other Purchased Services</u></b>			
	541 Advertising Related to Federal Grant Awards			386.46
	550 Printing and Binding			2,565.52
	580 Travel			3,118.98
<b>Total Other Purchased Services</b>				<b>\$6,070.96</b>
<b>600</b>	<b><u>Supplies</u></b>			
	610 General Supplies			921.73
	630 Food			41.11
	640 Books and Periodicals			659.22
<b>Total Supplies</b>				<b>\$1,622.06</b>
<b>700</b>	<b><u>Property</u></b>			
	752 Capital Equipment – Original and Additional			2,708.33
	762 Capitalized Equipment - Replacement			17,618.15
<b>Total Property</b>				<b>\$20,326.48</b>
<b>800</b>	<b><u>Other Objects</u></b>			
	810 Dues and Fees			1,337.00
<b>Total Other Objects</b>				<b>\$1,337.00</b>
<b>Total 2370 Community Relations Services</b>				<b>\$318,838.09</b>

**General Fund (10)**

**2380 Office of the Principal Services**

	<u>Elementary</u>	<u>Secondary</u>	<u>Federal</u>	<u>Total</u>
<b>100 Personnel Services – Salaries</b>				
100 Personnel Services – Salaries	1,099,135.77	1,199,596.64	117,855.77	2,416,588.18
<b>Total Personnel Services – Salaries</b>	<b>\$1,099,135.77</b>	<b>\$1,199,596.64</b>	<b>\$117,855.77</b>	<b>\$2,416,588.18</b>
<b>200 Personnel Services – Employee Benefits</b>				
210 Group Insurance – Contracted Provider	142,705.17	187,891.35	12,123.68	342,720.20
220 Social Security Contributions	87,451.35	95,711.78	3,876.87	187,040.00
230 PSERS Retirement Contributions	404,884.93	435,616.43		840,501.36
250 Unemployment Compensation	21.49	12.00		33.49
260 Workers' Compensation	4,121.09	5,293.31	803.53	10,217.93
270 Group Insurance – Self-Insurance	51,400.39	71,312.26	4,533.44	127,246.09
299 All Other Employee Benefits	37,518.31	40,826.08		78,344.39
<b>Total Personnel Services – Employee Benefits</b>	<b>\$728,102.73</b>	<b>\$836,663.21</b>	<b>\$21,337.52</b>	<b>\$1,586,103.46</b>
<b>300 Purchased Professional and Technical Services</b>				
330 Other Professional Services		9,149.15		9,149.15
<b>Total Purchased Professional and Technical Services</b>		<b>\$9,149.15</b>		<b>\$9,149.15</b>
<b>400 Purchased Property Services</b>				
430 Repairs and Maintenance Services		1,688.00		1,688.00
440 Rentals	38,838.74	63,729.63		102,568.37
<b>Total Purchased Property Services</b>	<b>\$38,838.74</b>	<b>\$65,417.63</b>		<b>\$104,256.37</b>
<b>500 Other Purchased Services</b>				
550 Printing and Binding		8,647.55		8,647.55
580 Travel	666.48	1,082.17		1,748.65
<b>Total Other Purchased Services</b>	<b>\$666.48</b>	<b>\$9,729.72</b>		<b>\$10,396.20</b>
<b>600 Supplies</b>				
610 General Supplies	4,526.82	38,718.84		43,245.66
630 Food	1,502.03	20,030.53		21,532.56
640 Books and Periodicals	27.71	2,290.76		2,318.47
<b>Total Supplies</b>	<b>\$6,056.56</b>	<b>\$61,040.13</b>		<b>\$67,096.69</b>
<b>800 Other Objects</b>				
810 Dues and Fees	3,408.16	2,607.52		6,015.68
<b>Total Other Objects</b>	<b>\$3,408.16</b>	<b>\$2,607.52</b>		<b>\$6,015.68</b>
<b>Total 2380 Office of the Principal Services</b>	<b>\$1,876,208.44</b>	<b>\$2,184,204.00</b>	<b>\$139,193.29</b>	<b>\$4,199,605.73</b>

General Fund (10)

2390 Other Administration Services

Elementary

Secondary

Federal

Total

100 Personnel Services – Salaries

100 Personnel Services – Salaries

2,455.18

**Total Personnel Services – Salaries**

**\$2,455.18**

200 Personnel Services – Employee Benefits

220 Social Security Contributions

185.17

230 PSERS Retirement Contributions

834.76

**Total Personnel Services – Employee Benefits**

**\$1,019.93**

800 Other Objects

810 Dues and Fees

8,300.00

**Total Other Objects**

**\$8,300.00**

**Total 2390 Other Administration Services**

**\$11,775.11**

**General Fund (10)**

	<u>Elementary</u>	<u>Secondary</u>	<u>Federal</u>	<u>Total</u>
<b>2400 Support Services – Pupil Health</b>				
<b>100 Personnel Services – Salaries</b>				
100 Personnel Services – Salaries				691,805.26
<b>Total Personnel Services – Salaries</b>				<b>\$691,805.26</b>
<b>200 Personnel Services – Employee Benefits</b>				
210 Group Insurance – Contracted Provider				147,284.16
220 Social Security Contributions				51,113.07
230 PSERS Retirement Contributions				229,757.68
250 Unemployment Compensation				248.92
260 Workers' Compensation				3,927.26
270 Group Insurance – Self-Insurance				58,518.75
<b>Total Personnel Services – Employee Benefits</b>				<b>\$490,849.84</b>
<b>300 Purchased Professional and Technical Services</b>				
330 Other Professional Services				171,222.86
<b>Total Purchased Professional and Technical Services</b>				<b>\$171,222.86</b>
<b>400 Purchased Property Services</b>				
430 Repairs and Maintenance Services				840.00
<b>Total Purchased Property Services</b>				<b>\$840.00</b>
<b>500 Other Purchased Services</b>				
530 Communications				33.24
550 Printing and Binding				235.00
580 Travel				4,075.42
<b>Total Other Purchased Services</b>				<b>\$4,343.66</b>
<b>600 Supplies</b>				
610 General Supplies				12,947.60
630 Food				1,034.32
<b>Total Supplies</b>				<b>\$13,981.92</b>
<b>700 Property</b>				
752 Capital Equipment – Original and Additional				7,875.00
762 Capitalized Equipment - Replacement				72.94
<b>Total Property</b>				<b>\$7,947.94</b>
<b>Total 2400 Support Services – Pupil Health</b>				<b>\$1,380,991.48</b>

General Fund (10)

2420 Medical Services

Elementary

Secondary

Federal

Total

300 Purchased Professional and Technical Services

330 Other Professional Services

7,500.00

**Total Purchased Professional and Technical Services**

**\$7,500.00**

**Total 2420 Medical Services**

**\$7,500.00**

**General Fund (10)**

**2440 Nursing Services**

	<u>Elementary</u>	<u>Secondary</u>	<u>Federal</u>	<u>Total</u>
<b>100 Personnel Services – Salaries</b>				
100 Personnel Services – Salaries				691,805.26
<b>Total Personnel Services – Salaries</b>				<b>\$691,805.26</b>
<b>200 Personnel Services – Employee Benefits</b>				
210 Group Insurance – Contracted Provider				147,284.16
220 Social Security Contributions				51,113.07
230 PSERS Retirement Contributions				229,757.68
250 Unemployment Compensation				248.92
260 Workers' Compensation				3,927.26
270 Group Insurance – Self-Insurance				58,518.75
<b>Total Personnel Services – Employee Benefits</b>				<b>\$490,849.84</b>
<b>300 Purchased Professional and Technical Services</b>				
330 Other Professional Services				163,722.86
<b>Total Purchased Professional and Technical Services</b>				<b>\$163,722.86</b>
<b>400 Purchased Property Services</b>				
430 Repairs and Maintenance Services				840.00
<b>Total Purchased Property Services</b>				<b>\$840.00</b>
<b>500 Other Purchased Services</b>				
530 Communications				33.24
550 Printing and Binding				235.00
580 Travel				4,075.42
<b>Total Other Purchased Services</b>				<b>\$4,343.66</b>
<b>600 Supplies</b>				
610 General Supplies				12,947.60
630 Food				1,034.32
<b>Total Supplies</b>				<b>\$13,981.92</b>
<b>700 Property</b>				
752 Capital Equipment – Original and Additional				7,875.00
762 Capitalized Equipment - Replacement				72.94
<b>Total Property</b>				<b>\$7,947.94</b>
<b>Total 2440 Nursing Services</b>				<b>\$1,373,491.48</b>

**General Fund (10)**

**2500 Support Services – Business**

Elementary                      Secondary                      Federal                      Total

**100 Personnel Services – Salaries**  
 100 Personnel Services – Salaries 545,226.10

**Total Personnel Services – Salaries \$545,226.10**

**200 Personnel Services – Employee Benefits**

210 Group Insurance – Contracted Provider 85,903.72  
 220 Social Security Contributions 40,513.81  
 230 PSERS Retirement Contributions 191,764.79  
 260 Workers' Compensation 3,579.63  
 270 Group Insurance – Self-Insurance 30,370.34  
 299 All Other Employee Benefits 29,395.39

**Total Personnel Services – Employee Benefits \$381,527.68**

**300 Purchased Professional and Technical Services**

330 Other Professional Services 17,111.19

**Total Purchased Professional and Technical Services \$17,111.19**

**400 Purchased Property Services**

440 Rentals (167.88)

**Total Purchased Property Services (\$167.88)**

**500 Other Purchased Services**

520 Insurance – General 76,935.50  
 530 Communications 23,534.89  
 541 Advertising Related to Federal Grant Awards 1,561.65  
 580 Travel 5,260.10

**Total Other Purchased Services \$107,292.14**

**600 Supplies**

610 General Supplies 52,697.55  
 630 Food 1,025.22  
 640 Books and Periodicals 60.00  
 650 Supplies & Fees – Technology Related 5,739.79

**Total Supplies \$59,522.56**

**800 Other Objects**

810 Dues and Fees 48,253.60

**Total Other Objects \$48,253.60**

**Total 2500 Support Services – Business \$1,158,765.39**

**General Fund (10)**

**2510 Fiscal Services**

Elementary                      Secondary                      Federal                      Total

<b>100</b>	<b><u>Personnel Services – Salaries</u></b>			
	100 Personnel Services – Salaries			545,226.10
<b>Total Personnel Services – Salaries</b>				<b>\$545,226.10</b>
<b>200</b>	<b><u>Personnel Services – Employee Benefits</u></b>			
	210 Group Insurance – Contracted Provider			85,903.72
	220 Social Security Contributions			40,513.81
	230 PSERS Retirement Contributions			191,764.79
	260 Workers' Compensation			3,579.63
	270 Group Insurance – Self-Insurance			30,370.34
	299 All Other Employee Benefits			29,395.39
<b>Total Personnel Services – Employee Benefits</b>				<b>\$381,527.68</b>
<b>300</b>	<b><u>Purchased Professional and Technical Services</u></b>			
	330 Other Professional Services			17,111.19
<b>Total Purchased Professional and Technical Services</b>				<b>\$17,111.19</b>
<b>400</b>	<b><u>Purchased Property Services</u></b>			
	440 Rentals			(167.88)
<b>Total Purchased Property Services</b>				<b>(\$167.88)</b>
<b>500</b>	<b><u>Other Purchased Services</u></b>			
	520 Insurance – General			76,935.50
	530 Communications			23,534.89
	541 Advertising Related to Federal Grant Awards			1,561.65
	580 Travel			5,260.10
<b>Total Other Purchased Services</b>				<b>\$107,292.14</b>
<b>600</b>	<b><u>Supplies</u></b>			
	610 General Supplies			52,697.55
	630 Food			1,025.22
	640 Books and Periodicals			60.00
	650 Supplies & Fees – Technology Related			5,739.79
<b>Total Supplies</b>				<b>\$59,522.56</b>
<b>800</b>	<b><u>Other Objects</u></b>			
	810 Dues and Fees			48,253.60
<b>Total Other Objects</b>				<b>\$48,253.60</b>
<b>Total 2510 Fiscal Services</b>				<b>\$1,158,765.39</b>

General Fund (10)

2511 Supervision of Fiscal Services - Head of Component

Elementary

Secondary

Federal

Total

100 Personnel Services – Salaries

100 Personnel Services – Salaries

309,765.83

**Total Personnel Services – Salaries**

**\$309,765.83**

200 Personnel Services – Employee Benefits

210 Group Insurance – Contracted Provider

50,005.86

220 Social Security Contributions

21,332.91

230 PSERS Retirement Contributions

105,338.37

260 Workers' Compensation

1,804.43

270 Group Insurance – Self-Insurance

18,294.08

299 All Other Employee Benefits

22,508.83

**Total Personnel Services – Employee Benefits**

**\$219,284.48**

**Total 2511 Supervision of Fiscal Services - Head of Component**

**\$529,050.31**

General Fund (10)

2514 Payroll Services

100 Personnel Services – Salaries

	<u>Elementary</u>	<u>Secondary</u>	<u>Federal</u>	<u>Total</u>
100 Personnel Services – Salaries				71,564.52
<b>Total Personnel Services – Salaries</b>				<b>\$71,564.52</b>
<b>200 Personnel Services – Employee Benefits</b>				
210 Group Insurance – Contracted Provider				10,762.36
220 Social Security Contributions				5,400.05
230 PSERS Retirement Contributions				24,396.02
260 Workers' Compensation				356.87
270 Group Insurance – Self-Insurance				3,786.87
299 All Other Employee Benefits				758.10
<b>Total Personnel Services – Employee Benefits</b>				<b>\$45,460.27</b>
<b>Total 2514 Payroll Services</b>				<b>\$117,024.79</b>

**General Fund (10)**

**2515 Financial Accounting Services**

**100 Personnel Services – Salaries**

	<u>Elementary</u>	<u>Secondary</u>	<u>Federal</u>	<u>Total</u>
100 Personnel Services – Salaries				103,563.89

<b>Total Personnel Services – Salaries</b>				<b>\$103,563.89</b>
--	--	--	--	---------------------

**200 Personnel Services – Employee Benefits**

210 Group Insurance – Contracted Provider				17,502.16
---	--	--	--	-----------

220 Social Security Contributions				9,217.52
-----------------------------------	--	--	--	----------

230 PSERS Retirement Contributions				41,792.65
------------------------------------	--	--	--	-----------

260 Workers' Compensation				733.08
---------------------------	--	--	--	--------

270 Group Insurance – Self-Insurance				4,876.53
--------------------------------------	--	--	--	----------

299 All Other Employee Benefits				6,128.46
---------------------------------	--	--	--	----------

<b>Total Personnel Services – Employee Benefits</b>				<b>\$80,250.40</b>
---	--	--	--	--------------------

<b>Total 2515 Financial Accounting Services</b>				<b>\$183,814.29</b>
---	--	--	--	---------------------

**General Fund (10)**

**2519 Other Fiscal Services**

Elementary                      Secondary                      Federal                      Total

<b>100</b>	<b><u>Personnel Services – Salaries</u></b>			
	100 Personnel Services – Salaries			60,331.86
<b>Total Personnel Services – Salaries</b>				<b>\$60,331.86</b>
<b>200</b>	<b><u>Personnel Services – Employee Benefits</u></b>			
	210 Group Insurance – Contracted Provider			7,633.34
	220 Social Security Contributions			4,563.33
	230 PSERS Retirement Contributions			20,237.75
	260 Workers' Compensation			685.25
	270 Group Insurance – Self-Insurance			3,412.86
<b>Total Personnel Services – Employee Benefits</b>				<b>\$36,532.53</b>
<b>300</b>	<b><u>Purchased Professional and Technical Services</u></b>			
	330 Other Professional Services			17,111.19
<b>Total Purchased Professional and Technical Services</b>				<b>\$17,111.19</b>
<b>400</b>	<b><u>Purchased Property Services</u></b>			
	440 Rentals			(167.88)
<b>Total Purchased Property Services</b>				<b>(\$167.88)</b>
<b>500</b>	<b><u>Other Purchased Services</u></b>			
	520 Insurance – General			76,935.50
	530 Communications			23,534.89
	541 Advertising Related to Federal Grant Awards			1,561.65
	580 Travel			5,260.10
<b>Total Other Purchased Services</b>				<b>\$107,292.14</b>
<b>600</b>	<b><u>Supplies</u></b>			
	610 General Supplies			52,697.55
	630 Food			1,025.22
	640 Books and Periodicals			60.00
	650 Supplies & Fees – Technology Related			5,739.79
<b>Total Supplies</b>				<b>\$59,522.56</b>
<b>800</b>	<b><u>Other Objects</u></b>			
	810 Dues and Fees			48,253.60
<b>Total Other Objects</b>				<b>\$48,253.60</b>
<b>Total 2519 Other Fiscal Services</b>				<b>\$328,876.00</b>



**General Fund (10)**

**2610 Supervision of Operation and Maintenance of Plant Services**

	<u>Elementary</u>	<u>Secondary</u>	<u>Federal</u>	<u>Total</u>
<b>100 Personnel Services – Salaries</b>				
100 Personnel Services – Salaries				353,671.94
<b>Total Personnel Services – Salaries</b>				<b>\$353,671.94</b>
<b>200 Personnel Services – Employee Benefits</b>				
210 Group Insurance – Contracted Provider				33,155.81
220 Social Security Contributions				26,846.81
230 PSERS Retirement Contributions				115,364.39
260 Workers' Compensation				2,481.02
270 Group Insurance – Self-Insurance				9,940.62
299 All Other Employee Benefits				14,504.43
<b>Total Personnel Services – Employee Benefits</b>				<b>\$202,293.08</b>
<b>300 Purchased Professional and Technical Services</b>				
330 Other Professional Services				64,732.91
<b>Total Purchased Professional and Technical Services</b>				<b>\$64,732.91</b>
<b>400 Purchased Property Services</b>				
410 Cleaning Services				507,287.43
420 Utility Services				182,427.53
430 Repairs and Maintenance Services				430,618.15
440 Rentals				15,592.28
460 Extermination Services				13,704.99
490 Other Purchased Property Services			2,160.00	2,160.00
<b>Total Purchased Property Services</b>			<b>\$2,160.00</b>	<b>\$1,151,790.38</b>
<b>500 Other Purchased Services</b>				
523 General Property and Liability Insurance				266,569.39
530 Communications				198,454.58
550 Printing and Binding				3,895.00
580 Travel				1,386.90
<b>Total Other Purchased Services</b>				<b>\$470,305.87</b>
<b>600 Supplies</b>				
610 General Supplies	328,603.55	372,747.01		701,350.56
620 Energy				909,085.72
630 Food				1,190.01
<b>Total Supplies</b>	<b>\$328,603.55</b>	<b>\$372,747.01</b>		<b>\$1,611,626.29</b>
<b>700 Property</b>				
752 Capital Equipment – Original and Additional				91,488.50
762 Capitalized Equipment - Replacement				19,177.37
<b>Total Property</b>				<b>\$110,665.87</b>
<b>800 Other Objects</b>				
810 Dues and Fees				51,092.31
<b>Total Other Objects</b>				<b>\$51,092.31</b>
<b>Total 2610 Supervision of Operation and Maintenance of Plant Services</b>	<b>\$328,603.55</b>	<b>\$372,747.01</b>	<b>\$2,160.00</b>	<b>\$4,016,178.65</b>

**General Fund (10)**

**2611 Supervision of Operation and Maintenance of Plant Services – Head of Component**

Elementary

Secondary

Federal

Total

**100 Personnel Services – Salaries**

100 Personnel Services – Salaries

299,912.54

**Total Personnel Services – Salaries**

**\$299,912.54**

**200 Personnel Services – Employee Benefits**

210 Group Insurance – Contracted Provider

26,465.41

220 Social Security Contributions

22,750.90

230 PSERS Retirement Contributions

101,993.31

260 Workers' Compensation

1,873.56

270 Group Insurance – Self-Insurance

8,065.03

299 All Other Employee Benefits

11,816.46

**Total Personnel Services – Employee Benefits**

**\$172,964.67**

**Total 2611 Supervision of Operation and Maintenance of Plant Services – Head of Component**

**\$472,877.21**

**General Fund (10)**

**2619 Supervision of Operation and Maintenance of Plant Services – All Other Supervision**

	<u>Elementary</u>	<u>Secondary</u>	<u>Federal</u>	<u>Total</u>
<b>100 Personnel Services – Salaries</b>				
100 Personnel Services – Salaries				53,759.40
<b>Total Personnel Services – Salaries</b>				<b>\$53,759.40</b>
<b>200 Personnel Services – Employee Benefits</b>				
210 Group Insurance – Contracted Provider				6,690.40
220 Social Security Contributions				4,095.91
230 PSERS Retirement Contributions				13,371.08
260 Workers' Compensation				607.46
270 Group Insurance – Self-Insurance				1,875.59
299 All Other Employee Benefits				2,687.97
<b>Total Personnel Services – Employee Benefits</b>				<b>\$29,328.41</b>
<b>300 Purchased Professional and Technical Services</b>				
330 Other Professional Services				64,732.91
<b>Total Purchased Professional and Technical Services</b>				<b>\$64,732.91</b>
<b>400 Purchased Property Services</b>				
410 Cleaning Services				507,287.43
420 Utility Services				182,427.53
430 Repairs and Maintenance Services				430,618.15
440 Rentals				15,592.28
460 Extermination Services				13,704.99
490 Other Purchased Property Services			2,160.00	2,160.00
<b>Total Purchased Property Services</b>			<b>\$2,160.00</b>	<b>\$1,151,790.38</b>
<b>500 Other Purchased Services</b>				
523 General Property and Liability Insurance				266,569.39
530 Communications				198,454.58
550 Printing and Binding				3,895.00
580 Travel				1,386.90
<b>Total Other Purchased Services</b>				<b>\$470,305.87</b>
<b>600 Supplies</b>				
610 General Supplies	328,603.55	372,747.01		701,350.56
620 Energy				909,085.72
630 Food				1,190.01
<b>Total Supplies</b>	<b>\$328,603.55</b>	<b>\$372,747.01</b>		<b>\$1,611,626.29</b>
<b>700 Property</b>				
752 Capital Equipment – Original and Additional				91,488.50
762 Capitalized Equipment - Replacement				19,177.37
<b>Total Property</b>				<b>\$110,665.87</b>
<b>800 Other Objects</b>				
810 Dues and Fees				51,092.31
<b>Total Other Objects</b>				<b>\$51,092.31</b>
<b>Total 2619 Supervision of Operation and Maintenance of Plant Services – All Other Supervision</b>	<b>\$328,603.55</b>	<b>\$372,747.01</b>	<b>\$2,160.00</b>	<b>\$3,543,301.44</b>

**General Fund (10)**

**2620 Operation of Buildings Services**

**100 Personnel Services – Salaries**

	<u>Elementary</u>	<u>Secondary</u>	<u>Federal</u>	<u>Total</u>
100 Personnel Services – Salaries				3,247,597.90

<b>Total Personnel Services – Salaries</b>				<b>\$3,247,597.90</b>
--	--	--	--	-----------------------

**200 Personnel Services – Employee Benefits**

210 Group Insurance – Contracted Provider				607,147.65
---	--	--	--	------------

220 Social Security Contributions				242,125.95
-----------------------------------	--	--	--	------------

230 PSERS Retirement Contributions				1,092,676.51
------------------------------------	--	--	--	--------------

250 Unemployment Compensation				2,232.82
-------------------------------	--	--	--	----------

260 Workers' Compensation				10,956.96
---------------------------	--	--	--	-----------

270 Group Insurance – Self-Insurance				220,070.06
--------------------------------------	--	--	--	------------

299 All Other Employee Benefits				77,836.37
---------------------------------	--	--	--	-----------

<b>Total Personnel Services – Employee Benefits</b>				<b>\$2,253,046.32</b>
---	--	--	--	-----------------------

<b>Total 2620 Operation of Buildings Services</b>				<b>\$5,500,644.22</b>
---	--	--	--	-----------------------

**General Fund (10)**

**2660 Safety and Security Services**

**100 Personnel Services – Salaries**

	<u>Elementary</u>	<u>Secondary</u>	<u>Federal</u>	<u>Total</u>
100 Personnel Services – Salaries				360,647.16
<b>Total Personnel Services – Salaries</b>				<b>\$360,647.16</b>

**200 Personnel Services – Employee Benefits**

210 Group Insurance – Contracted Provider				59,910.99
220 Social Security Contributions				27,002.86
230 PSERS Retirement Contributions				107,015.54
250 Unemployment Compensation				21.28
260 Workers' Compensation				1,053.45
270 Group Insurance – Self-Insurance				19,105.17
299 All Other Employee Benefits				5,831.72
<b>Total Personnel Services – Employee Benefits</b>				<b>\$219,941.01</b>

**300 Purchased Professional and Technical Services**

330 Other Professional Services				220,777.86
<b>Total Purchased Professional and Technical Services</b>				<b>\$220,777.86</b>

**400 Purchased Property Services**

430 Repairs and Maintenance Services				3,012.75
<b>Total Purchased Property Services</b>				<b>\$3,012.75</b>

**500 Other Purchased Services**

580 Travel				1,606.72
<b>Total Other Purchased Services</b>				<b>\$1,606.72</b>

**600 Supplies**

610 General Supplies	15,020.62	15,011.30		30,031.92
<b>Total Supplies</b>	<b>\$15,020.62</b>	<b>\$15,011.30</b>		<b>\$30,031.92</b>

**700 Property**

752 Capital Equipment – Original and Additional				24,725.00
762 Capitalized Equipment - Replacement				3,320.25
<b>Total Property</b>				<b>\$28,045.25</b>

**800 Other Objects**

810 Dues and Fees				5,900.00
<b>Total Other Objects</b>				<b>\$5,900.00</b>

**Total 2660 Safety and Security Services**

	<b>\$15,020.62</b>	<b>\$15,011.30</b>		<b>\$869,962.67</b>
--	--------------------	--------------------	--	---------------------

**General Fund (10)**

**2700 Student Transportation Services**

Elementary                      Secondary                      Federal                      Total

<b>100</b>	<b><u>Personnel Services – Salaries</u></b>			
	100 Personnel Services – Salaries			2,704,289.39
<b>Total Personnel Services – Salaries</b>				<b>\$2,704,289.39</b>
<b>200</b>	<b><u>Personnel Services – Employee Benefits</u></b>			
	210 Group Insurance – Contracted Provider			823,602.52
	220 Social Security Contributions			196,803.86
	230 PSERS Retirement Contributions			895,835.76
	250 Unemployment Compensation			388.18
	260 Workers' Compensation			9,085.37
	270 Group Insurance – Self-Insurance			258,761.34
	292 Health Savings Accounts			5,519.79
	299 All Other Employee Benefits			11,716.32
<b>Total Personnel Services – Employee Benefits</b>				<b>\$2,201,713.14</b>
<b>300</b>	<b><u>Purchased Professional and Technical Services</u></b>			
	330 Other Professional Services			12,632.08
<b>Total Purchased Professional and Technical Services</b>				<b>\$12,632.08</b>
<b>400</b>	<b><u>Purchased Property Services</u></b>			
	410 Cleaning Services			1,735.16
	430 Repairs and Maintenance Services			32,076.53
<b>Total Purchased Property Services</b>				<b>\$33,811.69</b>
<b>500</b>	<b><u>Other Purchased Services</u></b>			
	513 Contracted Carriers		5,311.16	22,899.24
	522 Automotive Liability Insurance			53,521.00
	530 Communications			2,337.76
	550 Printing and Binding			2,206.31
	580 Travel			2,360.71
<b>Total Other Purchased Services</b>			<b>\$5,311.16</b>	<b>\$83,325.02</b>
<b>600</b>	<b><u>Supplies</u></b>			
	610 General Supplies			174,987.22
	620 Energy			240,012.43
	630 Food			88.15
	650 Supplies & Fees – Technology Related			34,209.60
<b>Total Supplies</b>				<b>\$449,297.40</b>
<b>800</b>	<b><u>Other Objects</u></b>			
	810 Dues and Fees			6,130.00
<b>Total Other Objects</b>				<b>\$6,130.00</b>
<b>Total 2700 Student Transportation Services</b>			<b>\$5,311.16</b>	<b>\$5,491,198.72</b>

**General Fund (10)**

**2710 Supervision of Student Transportation Services**

Elementary                      Secondary                      Federal                      Total

<b>100</b>	<b><u>Personnel Services – Salaries</u></b>				
	100 Personnel Services – Salaries				229,877.95
<b>Total Personnel Services – Salaries</b>					<b>\$229,877.95</b>
<b>200</b>	<b><u>Personnel Services – Employee Benefits</u></b>				
	210 Group Insurance – Contracted Provider				40,151.98
	220 Social Security Contributions				17,238.44
	230 PSERS Retirement Contributions				86,056.80
	260 Workers' Compensation				1,313.53
	270 Group Insurance – Self-Insurance				17,020.91
	299 All Other Employee Benefits				4,735.78
<b>Total Personnel Services – Employee Benefits</b>					<b>\$166,517.44</b>
<b>300</b>	<b><u>Purchased Professional and Technical Services</u></b>				
	330 Other Professional Services				11,499.53
<b>Total Purchased Professional and Technical Services</b>					<b>\$11,499.53</b>
<b>400</b>	<b><u>Purchased Property Services</u></b>				
	410 Cleaning Services				1,579.59
	430 Repairs and Maintenance Services				29,200.64
<b>Total Purchased Property Services</b>					<b>\$30,780.23</b>
<b>500</b>	<b><u>Other Purchased Services</u></b>				
	513 Contracted Carriers				15,621.49
	522 Automotive Liability Insurance				48,722.47
	530 Communications				2,337.76
	550 Printing and Binding				2,206.31
	580 Travel				2,149.05
<b>Total Other Purchased Services</b>					<b>\$71,037.08</b>
<b>600</b>	<b><u>Supplies</u></b>				
	610 General Supplies				159,298.42
	620 Energy				223,924.76
	630 Food				88.15
	650 Supplies & Fees – Technology Related				34,209.60
<b>Total Supplies</b>					<b>\$417,520.93</b>
<b>800</b>	<b><u>Other Objects</u></b>				
	810 Dues and Fees				149.30
<b>Total Other Objects</b>					<b>\$149.30</b>
<b>Total 2710 Supervision of Student Transportation Services</b>					<b>\$927,382.46</b>

General Fund (10)

2711 Supervision of Student Transportation Services – Head of Component

Elementary

Secondary

Federal

Total

100 Personnel Services – Salaries

100 Personnel Services – Salaries

229,877.95

**Total Personnel Services – Salaries**

**\$229,877.95**

200 Personnel Services – Employee Benefits

210 Group Insurance – Contracted Provider

40,151.98

220 Social Security Contributions

17,238.44

230 PSERS Retirement Contributions

86,056.80

260 Workers' Compensation

1,313.53

270 Group Insurance – Self-Insurance

17,020.91

299 All Other Employee Benefits

4,735.78

**Total Personnel Services – Employee Benefits**

**\$166,517.44**

**Total 2711 Supervision of Student Transportation Services – Head of Component**

**\$396,395.39**



**General Fund (10)**

**2720 Vehicle Operation Services**

**100 Personnel Services – Salaries**

	<u>Elementary</u>	<u>Secondary</u>	<u>Federal</u>	<u>Total</u>
100 Personnel Services – Salaries				1,632,455.16
<b>Total Personnel Services – Salaries</b>				<b>\$1,632,455.16</b>
<b>200 Personnel Services – Employee Benefits</b>				
210 Group Insurance – Contracted Provider				631,460.23
220 Social Security Contributions				132,340.53
230 PSERS Retirement Contributions				601,515.52
250 Unemployment Compensation				370.20
260 Workers' Compensation				4,593.99
270 Group Insurance – Self-Insurance				208,720.72
292 Health Savings Accounts				4,635.91
<b>Total Personnel Services – Employee Benefits</b>				<b>\$1,583,637.10</b>
<b>500 Other Purchased Services</b>				
513 Contracted Carriers			5,311.16	5,739.24
<b>Total Other Purchased Services</b>			<b>\$5,311.16</b>	<b>\$5,739.24</b>
<b>Total 2720 Vehicle Operation Services</b>			<b>\$5,311.16</b>	<b>\$3,221,831.50</b>

**General Fund (10)**

**2730 Monitoring Services**

	<u>Elementary</u>	<u>Secondary</u>	<u>Federal</u>	<u>Total</u>
<b>100 Personnel Services – Salaries</b>				
100 Personnel Services – Salaries				111,120.24
<b>Total Personnel Services – Salaries</b>				<b>\$111,120.24</b>
<b>200 Personnel Services – Employee Benefits</b>				
210 Group Insurance – Contracted Provider				25,687.94
220 Social Security Contributions				8,986.39
230 PSERS Retirement Contributions				41,087.27
250 Unemployment Compensation				17.98
260 Workers' Compensation				950.45
270 Group Insurance – Self-Insurance				15,868.80
<b>Total Personnel Services – Employee Benefits</b>				<b>\$92,598.83</b>
<b>Total 2730 Monitoring Services</b>				<b>\$203,719.07</b>

General Fund (10)

2740 Vehicle Servicing and Maintenance Services

Elementary

Secondary

Federal

Total

100 Personnel Services – Salaries

100 Personnel Services – Salaries

292,129.89

**Total Personnel Services – Salaries**

**\$292,129.89**

200 Personnel Services – Employee Benefits

210 Group Insurance – Contracted Provider

53,595.64

220 Social Security Contributions

23,810.28

230 PSERS Retirement Contributions

109,333.11

260 Workers' Compensation

1,645.58

270 Group Insurance – Self-Insurance

15,474.58

299 All Other Employee Benefits

6,980.54

**Total Personnel Services – Employee Benefits**

**\$210,839.73**

**Total 2740 Vehicle Servicing and Maintenance Services**

**\$502,969.62**

**General Fund (10)**

**2750 Nonpublic Transportation**

Elementary                      Secondary                      Federal                      Total

<b>100</b>	<b><u>Personnel Services – Salaries</u></b>				
	100 Personnel Services – Salaries				438,706.15
<b>Total Personnel Services – Salaries</b>					<b>\$438,706.15</b>
<b>200</b>	<b><u>Personnel Services – Employee Benefits</u></b>				
	210 Group Insurance – Contracted Provider				72,706.73
	220 Social Security Contributions				14,428.22
	230 PSERS Retirement Contributions				57,843.06
	260 Workers' Compensation				581.82
	270 Group Insurance – Self-Insurance				1,676.33
	292 Health Savings Accounts				883.88
<b>Total Personnel Services – Employee Benefits</b>					<b>\$148,120.04</b>
<b>300</b>	<b><u>Purchased Professional and Technical Services</u></b>				
	330 Other Professional Services				1,132.55
<b>Total Purchased Professional and Technical Services</b>					<b>\$1,132.55</b>
<b>400</b>	<b><u>Purchased Property Services</u></b>				
	410 Cleaning Services				155.57
	430 Repairs and Maintenance Services				2,875.89
<b>Total Purchased Property Services</b>					<b>\$3,031.46</b>
<b>500</b>	<b><u>Other Purchased Services</u></b>				
	513 Contracted Carriers				1,538.51
	522 Automotive Liability Insurance				4,798.53
	580 Travel				211.66
<b>Total Other Purchased Services</b>					<b>\$6,548.70</b>
<b>600</b>	<b><u>Supplies</u></b>				
	610 General Supplies				15,688.80
	620 Energy				16,087.67
<b>Total Supplies</b>					<b>\$31,776.47</b>
<b>800</b>	<b><u>Other Objects</u></b>				
	810 Dues and Fees				5,980.70
<b>Total Other Objects</b>					<b>\$5,980.70</b>
<b>Total 2750 Nonpublic Transportation</b>					<b>\$635,296.07</b>

**General Fund (10)**

**2800 Support Services – Central**

Elementary                      Secondary                      Federal                      Total

**100 Personnel Services – Salaries**

100 Personnel Services – Salaries 809,026.85

**Total Personnel Services – Salaries \$809,026.85**

**200 Personnel Services – Employee Benefits**

210 Group Insurance – Contracted Provider 104,267.36

220 Social Security Contributions 60,899.84

230 PSERS Retirement Contributions 272,965.43

260 Workers' Compensation 4,478.89

270 Group Insurance – Self-Insurance 36,705.33

299 All Other Employee Benefits 72,734.19

**Total Personnel Services – Employee Benefits \$552,051.04**

**300 Purchased Professional and Technical Services**

330 Other Professional Services 192,462.19

340 Technical Services 398,093.07

360 Employee Training and Development Services 22,480.10

**Total Purchased Professional and Technical Services \$613,035.36**

**400 Purchased Property Services**

430 Repairs and Maintenance Services 59,080.68

**Total Purchased Property Services \$59,080.68**

**500 Other Purchased Services**

530 Communications 640.00

580 Travel 1,613.04

**Total Other Purchased Services \$2,253.04**

**600 Supplies**

610 General Supplies 9,478.89

630 Food 1,185.30

650 Supplies & Fees – Technology Related 118,159.07

**Total Supplies \$2,920.00 \$128,823.26**

**700 Property**

752 Capital Equipment – Original and Additional 85.88

756 Capitalized Technology Equipment – Original 9,795.85

766 Capitalized Technology Equipment – Replacement 23,778.75

768 Capitalized Technology Software - Replacement 10,419.42

**Total Property \$44,079.90**

**800 Other Objects**

810 Dues and Fees 1,766.00

**Total Other Objects \$1,766.00**

**Total 2800 Support Services – Central \$2,920.00 \$2,210,116.13**

General Fund (10)

2830 Staff Services

Elementary

Secondary

Federal

Total

200 Personnel Services – Employee Benefits

299 All Other Employee Benefits

54,086.72

**Total Personnel Services – Employee Benefits**

**\$54,086.72**

300 Purchased Professional and Technical Services

360 Employee Training and Development Services

22,480.10

**Total Purchased Professional and Technical Services**

**\$22,480.10**

**Total 2830 Staff Services**

**\$76,566.82**

General Fund (10)

	<u>Elementary</u>	<u>Secondary</u>	<u>Federal</u>	<u>Total</u>
<b>2834 Staff Development Services – Non-Instructional, Certified Staff Only</b>				
<b>200 Personnel Services – Employee Benefits</b>				
299 All Other Employee Benefits				39,034.72
<b>Total Personnel Services – Employee Benefits</b>				<b>\$39,034.72</b>
<b>300 Purchased Professional and Technical Services</b>				
360 Employee Training and Development Services				950.00
<b>Total Purchased Professional and Technical Services</b>				<b>\$950.00</b>
<b>Total 2834 Staff Development Services – Non-Instructional, Certified Staff Only</b>				<b>\$39,984.72</b>

General Fund (10)

	<u>Elementary</u>	<u>Secondary</u>	<u>Federal</u>	<u>Total</u>
<b>2836 Staff Development Services – Non-Instructional, Non-Certified Staff Only</b>				
<b>200 Personnel Services – Employee Benefits</b>				
299 All Other Employee Benefits				15,052.00
<b>Total Personnel Services – Employee Benefits</b>				<b>\$15,052.00</b>
<b>300 Purchased Professional and Technical Services</b>				
360 Employee Training and Development Services				21,530.10
<b>Total Purchased Professional and Technical Services</b>				<b>\$21,530.10</b>
<b>Total 2836 Staff Development Services – Non-Instructional, Non-Certified Staff Only</b>				<b>\$36,582.10</b>

**General Fund (10)**

**2840 Data Processing Services**

	<u>Elementary</u>	<u>Secondary</u>	<u>Federal</u>	<u>Total</u>
<b>100 Personnel Services – Salaries</b>				
100 Personnel Services – Salaries				809,026.85
<b>Total Personnel Services – Salaries</b>				<b>\$809,026.85</b>
<b>200 Personnel Services – Employee Benefits</b>				
210 Group Insurance – Contracted Provider				104,267.36
220 Social Security Contributions				60,899.84
230 PSERS Retirement Contributions				272,965.43
260 Workers' Compensation				4,478.89
270 Group Insurance – Self-Insurance				36,705.33
299 All Other Employee Benefits				18,647.47
<b>Total Personnel Services – Employee Benefits</b>				<b>\$497,964.32</b>
<b>300 Purchased Professional and Technical Services</b>				
330 Other Professional Services				192,462.19
340 Technical Services				398,093.07
<b>Total Purchased Professional and Technical Services</b>				<b>\$590,555.26</b>
<b>400 Purchased Property Services</b>				
430 Repairs and Maintenance Services				59,080.68
<b>Total Purchased Property Services</b>				<b>\$59,080.68</b>
<b>500 Other Purchased Services</b>				
530 Communications				640.00
580 Travel				1,613.04
<b>Total Other Purchased Services</b>				<b>\$2,253.04</b>
<b>600 Supplies</b>				
610 General Supplies			2,920.00	9,478.89
630 Food				1,185.30
650 Supplies & Fees – Technology Related				118,159.07
<b>Total Supplies</b>			<b>\$2,920.00</b>	<b>\$128,823.26</b>
<b>700 Property</b>				
752 Capital Equipment – Original and Additional				85.88
756 Capitalized Technology Equipment – Original				9,795.85
766 Capitalized Technology Equipment – Replacement				23,778.75
768 Capitalized Technology Software - Replacement				10,419.42
<b>Total Property</b>				<b>\$44,079.90</b>
<b>800 Other Objects</b>				
810 Dues and Fees				1,766.00
<b>Total Other Objects</b>				<b>\$1,766.00</b>
<b>Total 2840 Data Processing Services</b>			<b>\$2,920.00</b>	<b>\$2,133,549.31</b>

General Fund (10)

2900 Other Support Services

Elementary

Secondary

Federal

Total

500 Other Purchased Services

595 IU Payments By Withholding

79,043.33

**Total Other Purchased Services**

**\$79,043.33**

800 Other Objects

899 Pass-Through Funds

25,000.00

**Total Other Objects**

**\$25,000.00**

**Total 2900 Other Support Services**

**\$104,043.33**

General Fund (10)

2910 Support Services Not Listed Elsewhere In the 2000 Series

Elementary

Secondary

Federal

Total

500 Other Purchased Services

595 IU Payments By Withholding

79,043.33

**Total Other Purchased Services**

**\$79,043.33**

**Total 2910 Support Services Not Listed Elsewhere In the 2000 Series**

**\$79,043.33**

General Fund (10)

2990 Pass-Through Funds

Elementary

Secondary

Federal

Total

800 Other Objects

899 Pass-Through Funds

25,000.00

**Total Other Objects**

**\$25,000.00**

**Total 2990 Pass-Through Funds**

**\$25,000.00**

**General Fund (10)**

**3000 Operation of Non-Instructional Services**

**Total**

**100 Personnel Services – Salaries**

100 Personnel Services – Salaries 898,544.66

**Total Personnel Services – Salaries \$898,544.66**

**200 Personnel Services – Employee Benefits**

210 Group Insurance – Contracted Provider 36,271.70

220 Social Security Contributions 67,671.76

230 PSERS Retirement Contributions 291,557.69

250 Unemployment Compensation 404.76

260 Workers' Compensation 3,816.99

270 Group Insurance – Self-Insurance 13,295.39

299 All Other Employee Benefits 6,999.59

**Total Personnel Services – Employee Benefits \$420,017.88**

**300 Purchased Professional and Technical Services**

330 Other Professional Services 127,901.00

390 Other Purchased Professional and Technical Services 70,899.00

**Total Purchased Professional and Technical Services \$198,800.00**

**400 Purchased Property Services**

430 Repairs and Maintenance Services 9,186.56

**Total Purchased Property Services \$9,186.56**

**500 Other Purchased Services**

530 Communications 113.60

580 Travel 24,658.33

**Total Other Purchased Services \$24,771.93**

**600 Supplies**

610 General Supplies 221,781.06

**Total Supplies \$221,781.06**

**700 Property**

752 Capital Equipment – Original and Additional 1,322.03

**Total Property \$1,322.03**

**800 Other Objects**

810 Dues and Fees 98,809.65

**Total Other Objects \$98,809.65**

**Total 3000 Operation of Non-Instructional Services \$1,873,233.77**

**General Fund (10)**

**3200 Student Activities**

	<u>Elementary</u>	<u>Secondary</u>	<u>Federal</u>	<u>Total</u>
<b>100 Personnel Services – Salaries</b>				
100 Personnel Services – Salaries				898,544.66
<b>Total Personnel Services – Salaries</b>				<b>\$898,544.66</b>
<b>200 Personnel Services – Employee Benefits</b>				
210 Group Insurance – Contracted Provider				36,271.70
220 Social Security Contributions				67,671.76
230 PSERS Retirement Contributions				291,557.69
250 Unemployment Compensation				404.76
260 Workers' Compensation				3,816.99
270 Group Insurance – Self-Insurance				13,295.39
299 All Other Employee Benefits				6,999.59
<b>Total Personnel Services – Employee Benefits</b>				<b>\$420,017.88</b>
<b>300 Purchased Professional and Technical Services</b>				
330 Other Professional Services				127,616.00
390 Other Purchased Professional and Technical Services				70,899.00
<b>Total Purchased Professional and Technical Services</b>				<b>\$198,515.00</b>
<b>400 Purchased Property Services</b>				
430 Repairs and Maintenance Services				9,186.56
<b>Total Purchased Property Services</b>				<b>\$9,186.56</b>
<b>500 Other Purchased Services</b>				
530 Communications				113.60
580 Travel				24,658.33
<b>Total Other Purchased Services</b>				<b>\$24,771.93</b>
<b>600 Supplies</b>				
610 General Supplies				221,781.06
<b>Total Supplies</b>				<b>\$221,781.06</b>
<b>700 Property</b>				
752 Capital Equipment – Original and Additional				1,322.03
<b>Total Property</b>				<b>\$1,322.03</b>
<b>800 Other Objects</b>				
810 Dues and Fees				98,809.65
<b>Total Other Objects</b>				<b>\$98,809.65</b>
<b>Total 3200 Student Activities</b>				<b>\$1,872,948.77</b>

LEA : 125237603 Radnor Township SD

Printed 12/23/2024 6:00:11 PM

General Fund (10)

3300 Community Services

Elementary

Secondary

Federal

Total

300 Purchased Professional and Technical Services

330 Other Professional Services

285.00

285.00

**Total Purchased Professional and Technical Services**

**\$285.00**

**\$285.00**

**Total 3300 Community Services**

**\$285.00**

**\$285.00**

<b>General Fund (10)</b>		
<b>4000 Facilities Acquisition, Construction and Improvement Services</b>		<u><b>Total</b></u>
<b>600 Supplies</b>		
610 General Supplies		27,585.20
<b>Total Supplies</b>		<b>\$27,585.20</b>
<b>Total 4000 Facilities Acquisition, Construction and Improvement Services</b>		<b>\$27,585.20</b>

LEA : 125237603 Radnor Township SD

Printed 12/23/2024 6:00:20 PM

General Fund (10)

4600 Existing Building Improvement Services

Elementary

Secondary

Federal

Total

600 Supplies

610 General Supplies

27,585.20

**Total Supplies**

**\$27,585.20**

**Total 4600 Existing Building Improvement Services**

**\$27,585.20**

LEA : 125237603 Radnor Township SD

Printed 12/23/2024 6:00:32 PM

**General Fund (10)**

**5000 Other Expenditures and Financing Uses**

**Total**

**800 Other Objects**

830 Interest	3,084,753.87
880 Refunds of Prior Years' Receipts	611,905.16

<b>Total Other Objects</b>	<b>\$3,696,659.03</b>
----------------------------	-----------------------

**900 Other Uses of Funds**

910 Redemption of Principal	4,873,361.00
920 Authority Obligations	392,340.00
932 Capital Reserve Fund Transfers Applicable To Fund 32	5,075,000.00
933 Athletic Fund Transfers	45,000.00
939 Other Fund Transfers	281,389.00

<b>Total Other Uses of Funds</b>	<b>\$10,667,090.00</b>
----------------------------------	------------------------

<b>Total 5000 Other Expenditures and Financing Uses</b>	<b>\$14,363,749.03</b>
---	------------------------

General Fund (10)

5100 Debt Service / Other Expenditures and Financing Uses	<u>Elementary</u>	<u>Secondary</u>	<u>Federal</u>	<u>Total</u>
<b>800 Other Objects</b>				
830 Interest				3,084,753.87
880 Refunds of Prior Years' Receipts				611,905.16
<b>Total Other Objects</b>				<b>\$3,696,659.03</b>
<b>900 Other Uses of Funds</b>				
910 Redemption of Principal				4,873,361.00
920 Authority Obligations				392,340.00
<b>Total Other Uses of Funds</b>				<b>\$5,265,701.00</b>
<b>Total 5100 Debt Service / Other Expenditures and Financing Uses</b>				<b>\$8,962,360.03</b>

General Fund (10)

	<u>Elementary</u>	<u>Secondary</u>	<u>Federal</u>	<u>Total</u>
<b>5110 Debt Service</b>				
<b>800 Other Objects</b>				
830 Interest				3,070,344.87
<b>Total Other Objects</b>				<b>\$3,070,344.87</b>
<b>900 Other Uses of Funds</b>				
910 Redemption of Principal				4,489,000.00
920 Authority Obligations				392,340.00
<b>Total Other Uses of Funds</b>				<b>\$4,881,340.00</b>
<b>Total 5110 Debt Service</b>				<b>\$7,951,684.87</b>

LEA : 125237603 Radnor Township SD

Printed 12/23/2024 6:00:32 PM

General Fund (10)

5130 Refund of Prior Year Revenues / Receipts

Elementary

Secondary

Federal

Total

800 Other Objects

880 Refunds of Prior Years' Receipts

611,905.16

**Total Other Objects**

**\$611,905.16**

**Total 5130 Refund of Prior Year Revenues / Receipts**

**\$611,905.16**

LEA : 125237603 Radnor Township SD

Printed 12/23/2024 6:00:32 PM

General Fund (10)

	<u>Elementary</u>	<u>Secondary</u>	<u>Federal</u>	<u>Total</u>
<b>5140 Leases and Other Right-to-Use Arrangements</b>				
<b>800 Other Objects</b>				
830 Interest				14,409.00
<b>Total Other Objects</b>				<b>\$14,409.00</b>
<b>900 Other Uses of Funds</b>				
910 Redemption of Principal				384,361.00
<b>Total Other Uses of Funds</b>				<b>\$384,361.00</b>
<b>Total 5140 Leases and Other Right-to-Use Arrangements</b>				<b>\$398,770.00</b>

General Fund (10)

5200 Interfund Transfers – Out

Elementary

Secondary

Federal

Total

900 Other Uses of Funds

932 Capital Reserve Fund Transfers Applicable To Fund 32

5,075,000.00

933 Athletic Fund Transfers

45,000.00

939 Other Fund Transfers

281,389.00

**Total Other Uses of Funds**

**\$5,401,389.00**

**Total 5200 Interfund Transfers – Out**

**\$5,401,389.00**

LEA : 125237603 Radnor Township SD

Printed 12/23/2024 6:00:32 PM

General Fund (10)

5220 Special Revenue Fund Transfers

Elementary

Secondary

Federal

Total

900 Other Uses of Funds

933 Athletic Fund Transfers

45,000.00

**Total Other Uses of Funds**

**\$45,000.00**

**Total 5220 Special Revenue Fund Transfers**

**\$45,000.00**

LEA : 125237603 Radnor Township SD

Printed 12/23/2024 6:00:32 PM

General Fund (10)

5230 Capital Projects Fund Transfers

Elementary

Secondary

Federal

Total

900 Other Uses of Funds

932 Capital Reserve Fund Transfers Applicable To Fund 32

5,075,000.00

**Total Other Uses of Funds**

**\$5,075,000.00**

**Total 5230 Capital Projects Fund Transfers**

**\$5,075,000.00**

LEA : 125237603 Radnor Township SD

Printed 12/23/2024 6:00:32 PM

General Fund (10)

5240 Debt Service Fund Transfers

Elementary

Secondary

Federal

Total

900 Other Uses of Funds

939 Other Fund Transfers

281,389.00

**Total Other Uses of Funds**

**\$281,389.00**

**Total 5240 Debt Service Fund Transfers**

**\$281,389.00**

LEA : 125237603 Radnor Township SD

Printed 12/23/2024 6:00:15 PM

**Athletic / School-Sponsored Extra Curricular Activities Fund (29)**

**3000 Operation of Non-Instructional Services**

**Total**

**300 Purchased Professional and Technical Services**

330 Other Professional Services

39,490.00

**Total Purchased Professional and Technical Services**

**\$39,490.00**

**Total 3000 Operation of Non-Instructional Services**

**\$39,490.00**

LEA : 125237603 Radnor Township SD

Printed 12/23/2024 6:00:15 PM

**Athletic / School-Sponsored Extra Curricular Activities Fund (29)**

**3300 Community Services**

Elementary

Secondary

Federal

Total

**300 Purchased Professional and Technical Services**

330 Other Professional Services

39,490.00

**Total Purchased Professional and Technical Services**

**\$39,490.00**

**Total 3300 Community Services**

**\$39,490.00**

LEA : 125237603 Radnor Township SD

Printed 12/23/2024 6:00:02 PM

**Capital Reserve Fund - § 1431 (32)**

**2000 Support Services**

**Total**

**300 Purchased Professional and Technical Services**

330 Other Professional Services (276,239.54)

**Total Purchased Professional and Technical Services (\$276,239.54)**

**400 Purchased Property Services**

430 Repairs and Maintenance Services (5,603.00)

**Total Purchased Property Services (\$5,603.00)**

**700 Property**

752 Capital Equipment – Original and Additional 19,105.00

762 Capitalized Equipment - Replacement 694,713.10

**Total Property \$713,818.10**

**Total 2000 Support Services \$431,975.56**

LEA : 125237603 Radnor Township SD

Printed 12/23/2024 6:00:02 PM

**Capital Reserve Fund - § 1431 (32)**

**2600 Operation and Maintenance of Plant Services**

Elementary

Secondary

Federal

Total

**300 Purchased Professional and Technical Services**

330 Other Professional Services

(276,239.54)

**Total Purchased Professional and Technical Services**

**(\$276,239.54)**

**400 Purchased Property Services**

430 Repairs and Maintenance Services

(5,603.00)

**Total Purchased Property Services**

**(\$5,603.00)**

**700 Property**

752 Capital Equipment – Original and Additional

19,105.00

762 Capitalized Equipment - Replacement

100,636.10

**Total Property**

**\$119,741.10**

**Total 2600 Operation and Maintenance of Plant Services**

**(\$162,101.44)**

Capital Reserve Fund - § 1431 (32)

2610 Supervision of Operation and Maintenance of Plant Services

Elementary

Secondary

Federal

Total

300 Purchased Professional and Technical Services

330 Other Professional Services

(276,239.54)

**Total Purchased Professional and Technical Services**

**(\$276,239.54)**

400 Purchased Property Services

430 Repairs and Maintenance Services

(5,603.00)

**Total Purchased Property Services**

**(\$5,603.00)**

700 Property

752 Capital Equipment – Original and Additional

19,105.00

762 Capitalized Equipment - Replacement

100,636.10

**Total Property**

**\$119,741.10**

**Total 2610 Supervision of Operation and Maintenance of Plant Services**

**(\$162,101.44)**

Capital Reserve Fund - § 1431 (32)

2619 Supervision of Operation and Maintenance of Plant Services – All Other Supervision

Elementary

Secondary

Federal

Total

300 Purchased Professional and Technical Services

330 Other Professional Services

(276,239.54)

**Total Purchased Professional and Technical Services**

**(\$276,239.54)**

400 Purchased Property Services

430 Repairs and Maintenance Services

(5,603.00)

**Total Purchased Property Services**

**(\$5,603.00)**

700 Property

752 Capital Equipment – Original and Additional

19,105.00

762 Capitalized Equipment - Replacement

100,636.10

**Total Property**

**\$119,741.10**

**Total 2619 Supervision of Operation and Maintenance of Plant Services – All Other Supervision**

**(\$162,101.44)**

LEA : 125237603 Radnor Township SD

Printed 12/23/2024 6:00:02 PM

Capital Reserve Fund - § 1431 (32)

2700 Student Transportation Services

Elementary

Secondary

Federal

Total

700 Property

762 Capitalized Equipment - Replacement

594,077.00

**Total Property**

**\$594,077.00**

**Total 2700 Student Transportation Services**

**\$594,077.00**

LEA : 125237603 Radnor Township SD

Printed 12/23/2024 6:00:02 PM

Capital Reserve Fund - § 1431 (32)

2710 Supervision of Student Transportation Services

Elementary

Secondary

Federal

Total

700 Property

762 Capitalized Equipment - Replacement

594,077.00

**Total Property**

**\$594,077.00**

**Total 2710 Supervision of Student Transportation Services**

**\$594,077.00**

LEA : 125237603 Radnor Township SD

Printed 12/23/2024 6:00:02 PM

Capital Reserve Fund - § 1431 (32)

2719 Supervision of Student Transportation Services – All Other Supervision

Elementary

Secondary

Federal

Total

700 Property

762 Capitalized Equipment - Replacement

594,077.00

**Total Property**

**\$594,077.00**

**Total 2719 Supervision of Student Transportation Services – All Other Supervision**

**\$594,077.00**

LEA : 125237603 Radnor Township SD

Printed 12/23/2024 6:00:24 PM

**Capital Reserve Fund - § 1431 (32)**

**4000 Facilities Acquisition, Construction and Improvement Services**

**Total**

**300 Purchased Professional and Technical Services**

330 Other Professional Services	176,869.72
340 Technical Services	63,694.78
390 Other Purchased Professional and Technical Services	1,043,131.33

<b>Total Purchased Professional and Technical Services</b>	<b>\$1,283,695.83</b>
--	-----------------------

**400 Purchased Property Services**

430 Repairs and Maintenance Services	398,165.00
--------------------------------------	------------

<b>Total Purchased Property Services</b>	<b>\$398,165.00</b>
--	---------------------

**600 Supplies**

610 General Supplies	(922.00)
----------------------	----------

<b>Total Supplies</b>	<b>(\$922.00)</b>
-----------------------	-------------------

**700 Property**

762 Capitalized Equipment - Replacement	517,650.51
---	------------

<b>Total Property</b>	<b>\$517,650.51</b>
-----------------------	---------------------

<b>Total 4000 Facilities Acquisition, Construction and Improvement Services</b>	<b>\$2,198,589.34</b>
---	-----------------------

LEA : 125237603 Radnor Township SD

Printed 12/23/2024 6:00:24 PM

**Capital Reserve Fund - § 1431 (32)**

**4600 Existing Building Improvement Services**

Elementary

Secondary

Federal

Total

**300 Purchased Professional and Technical Services**

330 Other Professional Services

176,869.72

340 Technical Services

63,694.78

390 Other Purchased Professional and Technical Services

1,043,131.33

**Total Purchased Professional and Technical Services**

**\$1,283,695.83**

**400 Purchased Property Services**

430 Repairs and Maintenance Services

398,165.00

**Total Purchased Property Services**

**\$398,165.00**

**600 Supplies**

610 General Supplies

(922.00)

**Total Supplies**

**(\$922.00)**

**700 Property**

762 Capitalized Equipment - Replacement

517,650.51

**Total Property**

**\$517,650.51**

**Total 4600 Existing Building Improvement Services**

**\$2,198,589.34**

LEA : 125237603 Radnor Township SD

Printed 12/23/2024 6:00:07 PM

**Other Capital Projects Fund (39)**

**2000 Support Services**

**Total**

**800 Other Objects**

810 Dues and Fees

169,903.98

**Total Other Objects**

**\$169,903.98**

**Total 2000 Support Services**

**\$169,903.98**

LEA : 125237603 Radnor Township SD

Printed 12/23/2024 6:00:07 PM

Other Capital Projects Fund (39)

2300 Support Services – Administration

Elementary

Secondary

Federal

Total

800 Other Objects

810 Dues and Fees

169,903.98

**Total Other Objects**

**\$169,903.98**

**Total 2300 Support Services – Administration**

**\$169,903.98**

LEA : 125237603 Radnor Township SD

Printed 12/23/2024 6:00:07 PM

Other Capital Projects Fund (39)

2390 Other Administration Services

Elementary

Secondary

Federal

Total

800 Other Objects

810 Dues and Fees

169,903.98

**Total Other Objects**

**\$169,903.98**

**Total 2390 Other Administration Services**

**\$169,903.98**

**Other Capital Projects Fund (39)**

**4000 Facilities Acquisition, Construction and Improvement Services**

**Total**

**300 Purchased Professional and Technical Services**

330 Other Professional Services

1,521,114.25

340 Technical Services

2,735.96

**Total Purchased Professional and Technical Services**

**\$1,523,850.21**

**Total 4000 Facilities Acquisition, Construction and Improvement Services**

**\$1,523,850.21**

Other Capital Projects Fund (39)

4300 Architecture and Engineering Services / Educational Specifications Development – Original and Additional

Elementary

Secondary

Federal

Total

300 Purchased Professional and Technical Services

330 Other Professional Services

27,175.24

340 Technical Services

2,700.00

**Total Purchased Professional and Technical Services**

**\$29,875.24**

**Total 4300 Architecture and Engineering Services / Educational Specifications Development – Original and Additional**

**\$29,875.24**

LEA : 125237603 Radnor Township SD

Printed 12/23/2024 6:00:27 PM

Other Capital Projects Fund (39)

4600 Existing Building Improvement Services

Elementary

Secondary

Federal

Total

300 Purchased Professional and Technical Services

330 Other Professional Services

1,493,939.01

340 Technical Services

35.96

**Total Purchased Professional and Technical Services**

**\$1,493,974.97**

**Total 4600 Existing Building Improvement Services**

**\$1,493,974.97**

	<u>General Fund(10)</u>	<u>Student Sponsored Activity Fund(21)</u>	<u>Public Purpose Trust(27)</u>	<u>Other Compt Approved (28)</u>	<u>Athletic / Activity(29)</u>
<b>1000 Instruction</b>					
1100 Regular Programs - Elementary / Secondary	45,084,780.29				
1200 Special Programs - Elementary / Secondary	16,207,420.16				
1300 Vocational Education	529,183.20				
1400 Other Instructional Programs - Elementary / Secondary	443,005.29				
1500 Nonpublic School Programs	24,629.73				
1600 Adult Education Programs	1,128,835.00				
1800 Pre-Kindergarten	140,295.91				
<b>Total Instruction</b>	<b>\$63,558,149.58</b>				
<b>2000 Support Services</b>					
2100 Support Services - Students	5,776,942.58				
2200 Support Services - Instructional Staff	4,690,425.83				
2300 Support Services - Administration	6,694,914.86				
2400 Support Services - Pupil Health	1,380,991.48				
2500 Support Services - Business	1,158,765.39				
2600 Operation and Maintenance of Plant Services	10,386,785.54				
2700 Student Transportation Services	5,491,198.72				
2800 Support Services - Central	2,210,116.13				
2900 Other Support Services	104,043.33				
<b>Total Support Services</b>	<b>\$37,894,183.86</b>				
<b>3000 Operation of Non-Instructional Services</b>					
3200 Student Activities	1,872,948.77				
3300 Community Services	285.00				39,490.00
<b>Total Operation of Non-Instructional Services</b>	<b>\$1,873,233.77</b>				<b>\$39,490.00</b>
<b>4000 Facilities Acquisition, Construction and Improvement Services</b>					
4300 Architecture and Engineering Services / Educational Specifications Development - Original and Additional					
4600 Existing Building Improvement Services	27,585.20				
<b>Total Facilities Acquisition, Construction and Improvement Services</b>	<b>\$27,585.20</b>				
<b>5000 Other Expenditures and Financing Uses</b>					
5100 Debt Service / Other Expenditures and Financing Uses	8,962,360.03				
5200 Interfund Transfers - Out	5,401,389.00				
<b>Total Other Expenditures and Financing Uses</b>	<b>\$14,363,749.03</b>				
<b>TOTAL ACTUAL EXPENDITURES &amp; OTHER FINANCING USES</b>	<b>\$117,716,901.44</b>				<b>\$39,490.00</b>

	<u>Capital Reserve (690.1850)(31)</u>	<u>Capital Reserve (1431)(32)</u>	<u>Other Capital Projects Fund(39)</u>	<u>Debt Service(40)</u>	<u>Permanent(90)</u>
<b>1000 Instruction</b>					
1100 Regular Programs - Elementary / Secondary					
1200 Special Programs - Elementary / Secondary					
1300 Vocational Education					
1400 Other Instructional Programs - Elementary / Secondary					
1500 Nonpublic School Programs					
1600 Adult Education Programs					
1800 Pre-Kindergarten					
<b>Total Instruction</b>					
<b>2000 Support Services</b>					
2100 Support Services - Students					
2200 Support Services - Instructional Staff					
2300 Support Services - Administration			169,903.98		
2400 Support Services - Pupil Health					
2500 Support Services - Business					
2600 Operation and Maintenance of Plant Services		(162,101.44)			
2700 Student Transportation Services		594,077.00			
2800 Support Services - Central					
2900 Other Support Services					
<b>Total Support Services</b>		<b>\$431,975.56</b>	<b>\$169,903.98</b>		
<b>3000 Operation of Non-Instructional Services</b>					
3200 Student Activities					
3300 Community Services					
<b>Total Operation of Non-Instructional Services</b>					
<b>4000 Facilities Acquisition, Construction and Improvement Services</b>					
4300 Architecture and Engineering Services / Educational Specifications Development - Original and Additional			29,875.24		
4600 Existing Building Improvement Services		2,198,589.34	1,493,974.97		
<b>Total Facilities Acquisition, Construction and Improvement Services</b>		<b>\$2,198,589.34</b>	<b>\$1,523,850.21</b>		
<b>5000 Other Expenditures and Financing Uses</b>					
5100 Debt Service / Other Expenditures and Financing Uses					
5200 Interfund Transfers - Out					
<b>Total Other Expenditures and Financing Uses</b>					
<b>TOTAL ACTUAL EXPENDITURES &amp; OTHER FINANCING USES</b>		<b>\$2,630,564.90</b>	<b>\$1,693,754.19</b>		

**Total**

<b>1000 <u>Instruction</u></b>	
1100 Regular Programs - Elementary / Secondary	45,084,780.29
1200 Special Programs - Elementary / Secondary	16,207,420.16
1300 Vocational Education	529,183.20
1400 Other Instructional Programs - Elementary / Secondary	443,005.29
1500 Nonpublic School Programs	24,629.73
1600 Adult Education Programs	1,128,835.00
1800 Pre-Kindergarten	140,295.91
<b>Total Instruction</b>	<b>\$63,558,149.58</b>
<b>2000 <u>Support Services</u></b>	
2100 Support Services - Students	5,776,942.58
2200 Support Services - Instructional Staff	4,690,425.83
2300 Support Services - Administration	6,864,818.84
2400 Support Services - Pupil Health	1,380,991.48
2500 Support Services - Business	1,158,765.39
2600 Operation and Maintenance of Plant Services	10,224,684.10
2700 Student Transportation Services	6,085,275.72
2800 Support Services - Central	2,210,116.13
2900 Other Support Services	104,043.33
<b>Total Support Services</b>	<b>\$38,496,063.40</b>
<b>3000 <u>Operation of Non-Instructional Services</u></b>	
3200 Student Activities	1,872,948.77
3300 Community Services	39,775.00
<b>Total Operation of Non-Instructional Services</b>	<b>\$1,912,723.77</b>
<b>4000 <u>Facilities Acquisition, Construction and Improvement Services</u></b>	
4300 Architecture and Engineering Services / Educational Specifications Development - Original and Additional	29,875.24
4600 Existing Building Improvement Services	3,720,149.51
<b>Total Facilities Acquisition, Construction and Improvement Services</b>	<b>\$3,750,024.75</b>
<b>5000 <u>Other Expenditures and Financing Uses</u></b>	
5100 Debt Service / Other Expenditures and Financing Uses	8,962,360.03
5200 Interfund Transfers - Out	5,401,389.00
<b>Total Other Expenditures and Financing Uses</b>	<b>\$14,363,749.03</b>
<b>TOTAL ACTUAL EXPENDITURES &amp; OTHER FINANCING USES</b>	<b>\$122,080,710.53</b>

LEA : 125237603 Radnor Township SD

Printed 12/23/2024 6:00:48 PM

**PSERS Salary Data (Salary Data should relate to the General Fund only)**

<b>Amount Description</b>	<b>Amount</b>
Total Salary Base for salaries subject to PSERS withholding	49,370,848.75
Total Federally Funded salaries subject to PSERS withholding	131,653.51
	<hr/>

**Title I Expenditure Data**

<b>Amount Description</b>	<b>Amount</b>
Expenditures Funded with Current Title I Funds	358,976.00
Expenditures Funded with Carry over Title I Funds	87,442.00
	<hr/>
<b>Total Title I Expenditure Data</b>	<b>\$446,418.00</b>
	<hr/>

**Title IV Revenue Data**

<b>Amount Description</b>	<b>Amount</b>
Revenue from Title IV-A-1: Student Support and Academic Enrichment Grants	66,124.68
	<hr/>

1.	<b><u>Current Special Education Expenditures within Function 1000</u></b> See list of exclusions in the note below.	15,149,366.14
2.	<b><u>Current Special Education Expenditures within Function 2000</u></b> See list of exclusions in the note below.	7,599,196.24
2A.	<b><u>Current Special Education Expenditures within Sub-Function 2100</u></b> This data should also be included in line 2 above. See list of exclusions in the note below.	3,291,500.49
2B.	<b><u>Current Special Education Expenditures within Sub-Function 2200</u></b> This data should also be included in line 2 above. See list of exclusions in the note below.	562,311.76
2C.	<b><u>Current Special Education Expenditures within Sub-Function 2700</u></b> This data should also be included in line 2 above. See list of exclusions in the note below.	825,364.23
3.	<b><u>Current Special Education Expenditures within Sub-Function 3100</u></b> See list of exclusions in the note below.	
4.	<b><u>Current Special Education Expenditures within Sub-Function 3200</u></b> See list of exclusions in the note below.	

Note: The Current Special Education Expenditure amounts for each line should be calculated as follows:

- \* Include the total expenditures for special education costs from all governmental funds and the food service fund 51 for the function/sub-function requested
- \* Exclude data from sub-functions: 1243,1450,1500,1600,1807,2280,2450,2750,2990
- \* Exclude data from objects: 322,511,512,516,561,562,564,566,592,593,594,595,596,597,700,830,899

**Benefits for Staff Relative to Collective Bargaining Agreements**

	<b>OBJECT</b>	<b>COVERED</b>	<b>NOT COVERED</b>	<b>TOTAL</b>
<b>10 General Fund</b>				
	211 Medical Insurance	6,484,170.62		6,484,170.62
	212 Dental Insurance	430,184.07		430,184.07
	215 Eye Care Insurance			
	216 Prescription Insurance			
	271 Self-Insurance Medical Benefits			
	272 Self-Insurance Dental Benefits			
	275 Self-Insurance Eye Care Benefits	29,203.73		29,203.73
	276 Self-Insurance Prescription Benefits	2,745,582.60		2,745,582.60
	<b>FUND TOTAL</b>	<b>\$9,689,141.02</b>		<b>\$9,689,141.02</b>
<b>50 Enterprise Fund</b>				
	211 Medical Insurance	168,579.43		168,579.43
	212 Dental Insurance	6,825.98		6,825.98
	215 Eye Care Insurance			
	216 Prescription Insurance			
	271 Self-Insurance Medical Benefits			
	272 Self-Insurance Dental Benefits			
	275 Self-Insurance Eye Care Benefits	406.93		406.93
	276 Self-Insurance Prescription Benefits	52,031.19		52,031.19
	<b>FUND TOTAL</b>	<b>\$227,843.53</b>		<b>\$227,843.53</b>
<b>60 Internal Service Fund</b>	<b>No Self Insurance data to report</b>			
	211 Medical Insurance			
	212 Dental Insurance			
	215 Eye Care Insurance			
	216 Prescription Insurance			
	271 Self-Insurance Medical Benefits			
	272 Self-Insurance Dental Benefits			
	275 Self-Insurance Eye Care Benefits			
	276 Self-Insurance Prescription Benefits			
	<b>FUND TOTAL</b>			
<b>Total of All Funds</b>		<b>\$9,916,984.55</b>		<b>\$9,916,984.55</b>

LEA : 125237603 Radnor Township SD

Printed 12/23/2024 6:00:55 PM

Function	Special Education (Prior Year)	Nonspecial Education (Prior Year)	Total (Prior Year)	Special Education (Current Year)	Nonspecial Education (Current Year)	Total (Current Year)
2120 Guidance Services	323,988.62	1,675,279.22	1,999,267.84	355,198.56	2,007,959.20	2,363,157.76
2140 Psychological Services	179,192.10	926,565.69	1,105,757.79	175,970.49	994,771.93	1,170,742.42
2150 Speech Pathology and Audiology Services						
2160 Social Work Services	65,697.74	428,641.89	494,339.63	76,013.47	429,708.80	505,722.27
2260 Instruction and Curriculum Development Services	160,461.00	829,710.99	990,171.99	164,053.20	927,403.10	1,091,456.30
2350 Legal and Accounting Services	144,393.20	201,133.13	345,526.33	47,311.64	113,856.50	161,168.14
2420 Medical Services	1,053.35	5,446.65	6,500.00	1,127.30	6,372.66	7,499.96
2440 Nursing Services	202,398.33	1,168,526.81	1,370,925.14	205,247.60	1,160,277.00	1,365,524.60
2700 Student Transportation Services	717,952.41	4,600,213.59	5,318,166.00	825,364.20	4,665,834.52	5,491,198.72
<b>Total</b>	<b>\$1,795,136.75</b>	<b>\$9,835,517.97</b>	<b>\$11,630,654.72</b>	<b>\$1,850,286.46</b>	<b>\$10,306,183.71</b>	<b>\$12,156,470.17</b>

(PRINCIPAL AMOUNTS ONLY)

**GOVERNMENTAL FUNDS/ ACTIVITIES**

	Short-Term Borrowing	General Obligation Bonds/Notes	Authority Building Obligations	Leases, Other Right to Use Arrangements	Extended Term Financing Agreements	Other Long Term Debt/Liabilities	OPEB, Comp Abs, Net Pension Liab	Total
1. Debt at Beginning of Fiscal Year		88,860,000.00	5,065,000.00	1,028,477.60		2,697,745.00	140,580,336.91	238,231,559.51
2. Additional Debt Incurred During Year		9,380,000.00					6,888,145.09	16,268,145.09
3. Retirements and Repayments		4,489,000.00		374,361.00		417,395.00	726,600.00	6,007,356.00
4. Debt at End of Fiscal Year		93,751,000.00	5,065,000.00	654,116.60		2,280,350.00	146,741,882.00	248,492,348.60
5. Accreted Interest at End Of Fiscal Year								
6. Total Debt and Accreted Interest		93,751,000.00	5,065,000.00	654,116.60		2,280,350.00	146,741,882.00	248,492,348.60
7. Current Portion P&I - Due within 1 year		7,280,562.67	278,812.20	384,361.00		417,395.00	24,653.00	8,385,783.87
8. Interest Paid during current fiscal year		2,791,532.67	278,812.20	14,409.00				3,084,753.87

(PRINCIPAL AMOUNTS ONLY)

**PROPRIETARY FUNDS**

	Short-Term Borrowing	General Obligation Bonds/Notes	Authority Building Obligations	Leases, Other Right to Use Arrangements	Extended Term Financing Agreements	Other Long Term Debt/Liabilities	OPEB, Comp Abs, Net Pension Liab	Total
1. Debt at Beginning of Fiscal Year							1,536,772.00	1,536,772.00
2. Additional Debt Incurred During Year							26,006.00	26,006.00
3. Retirements and Repayments							152,160.00	152,160.00
4. Debt at End of Fiscal Year							1,410,618.00	1,410,618.00
5. Accreted Interest at End Of Fiscal Year								
6. Total Debt and Accreted Interest							1,410,618.00	1,410,618.00
7. Current Portion P&I - Due within 1 year								
8. Interest Paid during current fiscal year								

**Total Principal and Interest Payments Made by Your School - All Funds**

Function	Fund		Principal (910)	Principal (920)	Interest (830)	Total (Principal +Interest)	Misc Other Uses (990)
5110	10	General Fund	4,489,000.00	392,340.00	3,070,344.87	7,951,684.87	
5110	20	Special Revenue Funds					
5110	30	Capital Projects Funds					
5110	40	Debt Service Fund					
5110	90	Permanent Fund					
5120	10	General Fund					
5120	20	Special Revenue Funds					
5120	30	Capital Projects Funds					
5120	40	Debt Service Fund					
5140	10	General Fund	384,361.00		14,409.00	398,770.00	
5140	20	Special Revenue Funds					
5140	30	Capital Projects Funds					
5140	40	Debt Service Fund					
5140	90	Permanent Fund					
<b>Total Debt Payments - Governmental Funds</b>			<b>\$4,873,361.00</b>	<b>\$392,340.00</b>	<b>\$3,084,753.87</b>	<b>\$8,350,454.87</b>	

Function	Fund		Principal (910)	Principal (920)	Interest (830)	Total (Principal +Interest)
5110	50	Enterprise Fund				
5110	60	Internal Service Fund				
5120	50	Enterprise Fund				
5120	60	Internal Service Fund				
5140	50	Enterprise Fund				
5140	60	Internal Service Fund				
<b>Total Debt Payments - Proprietary Funds</b>						

**Debt Details**  
**Governmental Funds/ Activities**

Debt Category	Debt Issue Date (MM/YYYY)	Principal Amounts Only			Debt at End of Fiscal Year	Current Portion Due Within One Year (Principal and Interest)	Interest Paid During Fiscal Year
		Debt at Beginning of Fiscal Year	Additions	Reductions / Repayments			
General Obligation Bonds/Notes – CIB	11/2023		9,380,000.00		9,380,000.00	155,125.00	155,125.00
General Obligation Bonds/Notes – CIB	03/2023	6,975,000.00		770,000.00	6,205,000.00	949,480.02	179,450.02
General Obligation Bonds/Notes – CIB	07/2022	9,610,000.00		1,578,000.00	8,032,000.00	1,832,816.16	254,816.16
General Obligation Bonds/Notes – CIB	04/2021	25,520,000.00		5,000.00	25,515,000.00	983,212.50	978,212.50
General Obligation Bonds/Notes – CIB	11/2019	16,640,000.00		235,000.00	16,405,000.00	715,000.55	480,000.55
General Obligation Bonds/Notes – CIB	05/2019	9,930,000.00		75,000.00	9,855,000.00	321,875.00	246,875.00
General Obligation Bonds/Notes – CIB	05/2019	8,945,000.00		5,000.00	8,940,000.00	281,807.50	276,807.50
General Obligation Bonds/Notes – CIB	11/2017	9,175,000.00		1,336,000.00	7,839,000.00	1,506,470.92	170,470.92
General Obligation Bonds/Notes – CIB	01/2016	1,185,000.00		405,000.00	780,000.00	431,637.52	26,637.52
General Obligation Bonds/Notes – CIB	11/2014	880,000.00		80,000.00	800,000.00	103,137.50	23,137.50
Authority Building Obligations – CIB	11/2011	3,565,000.00			3,565,000.00	181,387.20	181,387.20
Authority Building Obligations – CIB	11/2010	1,500,000.00			1,500,000.00	97,425.00	97,425.00
Leases and Other Right to Use Arrangements		1,028,477.60		374,361.00	654,116.60	384,361.00	14,409.00
Other Long Term Debt/Liabilities		2,697,745.00		417,395.00	2,280,350.00	417,395.00	
Net Pension Liability		138,793,298.00	5,694,849.00	726,600.00	143,761,547.00		
Compensated Absences		699,651.91	176,306.09		875,958.00	24,653.00	
Other Post-Employment Benefits (OPEB)		1,087,387.00	1,016,990.00		2,104,377.00		
<b>Totals for Debt Entered:</b>		<b>\$238,231,559.51</b>	<b>\$16,268,145.09</b>	<b>\$6,007,356.00</b>	<b>\$248,492,348.60</b>	<b>\$8,385,783.87</b>	<b>\$3,084,753.87</b>

**Bond Details**  
**Proprietary Funds**

Debt Category	Debt Issue Date (MM/YYYY)	Principal Amounts Only			Debt at End of Fiscal Year	Current Portion Due Within One Year (Principal and Interest)	Interest Paid During Fiscal Year
		Debt at Beginning of Fiscal Year	Additions	Reductions / Repayments			
Other Post-Employment Benefits (OPEB)		107,261.00	26,006.00		133,267.00		
Net Pension Liability		1,429,511.00		152,160.00	1,277,351.00		
<b>Totals for Debt Entered:</b>		<b>\$1,536,772.00</b>	<b>\$26,006.00</b>	<b>\$152,160.00</b>	<b>\$1,410,618.00</b>		

**General Fund (10)**

**Section 1: Tuition/Purchased Services as Reported within Expenditure Detail**

	Amount
Tuition Reported in General Fund Expenditures 1000-560	5,381,804.92
Purchased Services in General Fund Expenditures 1000-594 and 1000-597	1,167.46
<b>Section 1 Total</b>	<b>\$5,382,972.38</b>

**Section 2: Tuition Paid to Institution Types During Fiscal Year**

	Tuition Paid For Nonspecial Education	Tuition Paid For Special Education	Total
1 1306 Institutions			
2 Institutionalized Children's Programs		1,167.46	1,167.46
3 Juveniles Incarcerated in Adult Facilities			
4 Residential Treatment Facilities		2,951,479.75	2,951,479.75
5 Other Local Education Agencies			
6 Brick and Mortar Charter Schools	61,601.72		61,601.72
7 Cyber Charter Schools	159,000.86	129,022.90	288,023.76
8 Career and Technology Centers	529,183.20		529,183.20
9 Approved Private Schools		422,681.49	422,681.49
10 PA Chartered Schools for the Deaf and Blind			
11 Private Residential Rehabilitative Institutions			
12 Juvenile Detention Centers			
13 Special Program Jointures	1,128,835.00		1,128,835.00
14 Other Tuition Not Included Elsewhere In This Section			
<b>Section 2 Total</b>	<b>\$1,878,620.78</b>	<b>\$3,504,351.60</b>	<b>\$5,382,972.38</b>

**Food Service / Cafeteria Operations Fund (51)**

**3000 Operation of Non-Instructional Services**

**Total**

**100 Personnel Services – Salaries**

100 Personnel Services – Salaries 530,770.00

**Total Personnel Services – Salaries \$530,770.00**

**200 Personnel Services – Employee Benefits**

210 Group Insurance – Contracted Provider 176,735.00

220 Social Security Contributions 38,012.00

230 PSERS Retirement Contributions 4,471.00

250 Unemployment Compensation 19.00

270 Group Insurance – Self-Insurance 52,438.00

291 Other Retirement Plans 270.00

292 Health Savings Accounts 4,500.00

**Total Personnel Services – Employee Benefits \$276,445.00**

**300 Purchased Professional and Technical Services**

330 Other Professional Services 36,328.00

**Total Purchased Professional and Technical Services \$36,328.00**

**400 Purchased Property Services**

410 Cleaning Services 48,757.00

430 Repairs and Maintenance Services 45,446.00

**Total Purchased Property Services \$94,203.00**

**500 Other Purchased Services**

570 Food Service Management 53,999.00

580 Travel 2,163.00

**Total Other Purchased Services \$56,162.00**

**600 Supplies**

610 General Supplies 57,635.00

630 Food 1,089,727.00

**Total Supplies \$1,147,362.00**

**700 Property**

740 Depreciation 36,071.00

**Total Property \$36,071.00**

**800 Other Objects**

810 Dues and Fees (265.00)

**Total Other Objects (\$265.00)**

**Total 3000 Operation of Non-Instructional Services \$2,177,076.00**

**Food Service / Cafeteria Operations Fund (51)**

	<u>Elementary</u>	<u>Secondary</u>	<u>Federal</u>	<u>Total</u>
<b>3100 Food Services</b>				
<b>100 Personnel Services – Salaries</b>				
100 Personnel Services – Salaries				530,770.00
<b>Total Personnel Services – Salaries</b>				<b>\$530,770.00</b>
<b>200 Personnel Services – Employee Benefits</b>				
210 Group Insurance – Contracted Provider				176,735.00
220 Social Security Contributions				38,012.00
230 PSERS Retirement Contributions				4,471.00
250 Unemployment Compensation				19.00
270 Group Insurance – Self-Insurance				52,438.00
291 Other Retirement Plans				270.00
292 Health Savings Accounts				4,500.00
<b>Total Personnel Services – Employee Benefits</b>				<b>\$276,445.00</b>
<b>300 Purchased Professional and Technical Services</b>				
330 Other Professional Services				36,328.00
<b>Total Purchased Professional and Technical Services</b>				<b>\$36,328.00</b>
<b>400 Purchased Property Services</b>				
410 Cleaning Services				48,757.00
430 Repairs and Maintenance Services				45,446.00
<b>Total Purchased Property Services</b>				<b>\$94,203.00</b>
<b>500 Other Purchased Services</b>				
570 Food Service Management				53,999.00
580 Travel				2,163.00
<b>Total Other Purchased Services</b>				<b>\$56,162.00</b>
<b>600 Supplies</b>				
610 General Supplies				57,635.00
630 Food				1,089,727.00
<b>Total Supplies</b>				<b>\$1,147,362.00</b>
<b>700 Property</b>				
740 Depreciation				36,071.00
<b>Total Property</b>				<b>\$36,071.00</b>
<b>800 Other Objects</b>				
810 Dues and Fees				(265.00)
<b>Total Other Objects</b>				<b>(\$265.00)</b>
<b>Total 3100 Food Services</b>				<b>\$2,177,076.00</b>

**Internal Service Fund (60)**

**2000 Support Services**

**Total**

**200 Personnel Services – Employee Benefits**

210 Group Insurance – Contracted Provider

13,668,862.00

**Total Personnel Services – Employee Benefits**

**\$13,668,862.00**

**300 Purchased Professional and Technical Services**

330 Other Professional Services

747,457.00

**Total Purchased Professional and Technical Services**

**\$747,457.00**

**Total 2000 Support Services**

**\$14,416,319.00**

Internal Service Fund (60)

2300 Support Services – Administration

Elementary

Secondary

Federal

Total

200 Personnel Services – Employee Benefits

210 Group Insurance – Contracted Provider

13,668,862.00

**Total Personnel Services – Employee Benefits**

**\$13,668,862.00**

300 Purchased Professional and Technical Services

330 Other Professional Services

747,457.00

**Total Purchased Professional and Technical Services**

**\$747,457.00**

**Total 2300 Support Services – Administration**

**\$14,416,319.00**

Internal Service Fund (60)

2340 Staff Relations and Negotiations Services

Elementary

Secondary

Federal

Total

200 Personnel Services – Employee Benefits

210 Group Insurance – Contracted Provider

13,668,862.00

**Total Personnel Services – Employee Benefits**

**\$13,668,862.00**

300 Purchased Professional and Technical Services

330 Other Professional Services

747,457.00

**Total Purchased Professional and Technical Services**

**\$747,457.00**

**Total 2340 Staff Relations and Negotiations Services**

**\$14,416,319.00**

	<u>Food Service(51)</u>	<u>Child Care Operations(52)</u>	<u>Other Enterprise(58)</u>	<u>Internal Service(60)</u>	<u>Total</u>
<b>2000 <u>Support Services</u></b>					
2300 Support Services - Administration				14,416,319.00	14,416,319.00
<b>Total Support Services</b>				<b>\$14,416,319.00</b>	<b>\$14,416,319.00</b>
<b>3000 <u>Operation of Non-Instructional Services</u></b>					
3100 Food Services	2,177,076.00				2,177,076.00
<b>Total Operation of Non-Instructional Services</b>	<b>\$2,177,076.00</b>				<b>\$2,177,076.00</b>
<b>TOTAL ACTUAL EXPENDITURES &amp; OTHER FINANCING USES</b>	<b>\$2,177,076.00</b>			<b>\$14,416,319.00</b>	<b>\$16,593,395.00</b>

LEA : 125237603 Radnor Township SD

Printed 12/23/2024 6:01:17 PM

Fund	School	School Number	Local Personnel	Local Nonpersonnel	State Personnel	State Nonpersonnel	Federal Personnel	Federal Nonpersonnel	Total	Explanation
10										
	Ithan El Sch	6510	10,126,963.55	1,867,547.94		14,995.07	161,499.30	84,665.34	12,255,671.20	
	Radnor El Sch	7697	12,071,239.73	1,985,186.96		42,354.50	335,428.06	92,316.83	14,526,526.08	
	Radnor MS	6511	18,817,378.66	2,760,824.08		12,910.89	168,403.22	150,477.80	21,909,994.65	
	Radnor SHS	1921	27,037,601.21	4,460,654.78		22,406.89	243,387.18	217,480.20	31,981,530.26	
	Wayne El Sch	6512	12,222,421.20	1,987,167.30		27,246.39	173,238.94	90,819.80	14,500,893.63	
<b>Total</b>			<b>80,275,604.35</b>	<b>13,061,381.06</b>		<b>119,913.74</b>	<b>1,081,956.70</b>	<b>635,759.97</b>	<b>95,174,615.82</b>	