

MISCELLANEOUS ASSISTANCE



Helping Hands of Moundridge

Assistance for community members who are experiencing a financial crisis due to the death of a family member, a medical emergency, a medical emergency, natural disasters, unexpected personal disaster, etc.

Contacts:

Rick Krehbiel 620-386-4147

Derek King 717-201-1147

Types of services:

- Food: Groceries or meals via the deli of Moundridge Food market.
- Transportation:
 - ◇ Gas at Casey's
- Lodging/Housing Assistance
 - ◇ Hotel for emergency lodging
 - ◇ Utility bills on one-time basis
 - ◇ Minor house repairs (if appropriate qualified labor is available)
- Miscellaneous: Individuals and families in crisis situations will have a variety of needs. Interested persons should complete a Request for Assistance Form and submit to Helping Hands of Moundridge Board for consideration.

MISCELLANEOUS ASSISTANCE

McPherson Churches

United in Ministry

215 S. Main St., McPherson

Phone: 620-241-8331

Many services available for McPherson County residents. Rent/Utility assistance, bus fare, gas vouchers, food bank, etc.



STEPMC (Moundridge)

Coach: Rebekah Darrah
(620-755-4383)

STEPMC (Steps To End Poverty in McPherson County) believes every person deserves a life free from being trapped in the cycle of working hard to hardly get by. We know that the experts on poverty are the people experiencing it. We also believe that all people are inherently gifted, and doing their best with the resources available to them in the moment. We have found that together we can overcome poverty with an environment that educates, empowers, and equips people to move up and out of the cycle of poverty - successfully. If you are struggling and you know there's something better out there for you and your family, come join our supportive community as we walk with you on your path out of the constant struggle. STEPMC Coach, Rebekah Darrah, would love to hear your knowledge and input, and give you more information about getting involved.

MISCELLANEOUS ASSISTANCE



Grace Cares

Grace Cares is a versatile ministry with few boundaries. Our main focus areas include providing meals for those in need, sending cards/texts/calls of encouragement, occasional financial help in special cases, shopping and getting food/groceries/other supplies to those in need, transportation to appointments or places that are difficult to get to, and a prayer team who routinely pray for needs as they arise. We have also put together teams of people to help move or do small home projects when necessary. We are always open to hearing needs and responding to those on a case by case basis as well. Please contact Sabrina Peavy at 785-735-8181.

LOANS

First Mennonite Church of Christian

First Mennonite offers No-Interest Mini-Loans to assist in situations of financial hardship. Loan amounts can range between \$50-\$300. Please contact Rick Krehbiel at 620-386-4147.

*Published by Eden Mennonite Church
edenoffice@edenmennonite.org*

Moundridge Community Resources



TRANSPORTATION



Public Transportation

Transportation is available by appointments 9 a.m.-4 p.m. Monday through Friday. Call 620-747-9857 to make an appointment.

Prices for one-way trip:

\$2	Van around town
\$5	Hesston
\$10	Galva
\$10	Inman
\$10	Newton
\$10	McPherson
\$11	Buhler
\$11	Canton
\$18	Hutchinson
\$25	Wichita

Sponsored by the Moundridge Senior Center 620-345-2729. Call for more information.

MEALS



Moundridge Senior Center
Phone: 620-345-2729
100 N. Schmidt
Ashley Stucky Director

The Moundridge Senior Center building is open 8 a.m. to 2 p.m. Monday through Friday.

Lunch served for anyone, delivered to anyone. *Please call by 9 a.m. to reserve a meal. to dine in, have delivered or pick up.*

Meals are available for pick up at 11 a.m.

Lunch: \$6.00 for Seniors, (60 and older), \$6.00 for anyone else.

Delivered: \$6.00 for seniors, (within Moundridge School District).

Lunch is served at 12 noon Monday through Friday.

Commodities are available once a month for anybody.

Call the Senior Center to receive our monthly newsletter.

FOOD



Located at the Senior Center

100 N. Schmidt
Emily Regier, Director
Phone: (620) 345-2401

Open:

Tuesdays 5-6 p.m.

Thursdays 3-4 p.m.

Saturdays 10:30-11:30 a.m.

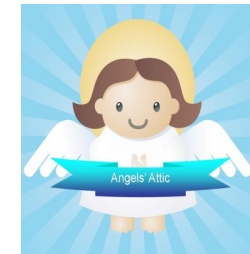
Anyone living in the Moundridge School District needing assistance is welcome.

Every two weeks you may receive canned meat, vegetables and fruit. Pasta, cereal, hamburger, cheese, butter, juice, and eggs.

Every month you may receive toilet paper, dish soap, bath soap, kleenix, pancake mix, cooking oil and ketchup.

There is a "Little Pantry" outside the building to supplement any needs that arise when we are not open. Please help yourself.

CLOTHING AND HOUSEHOLD ITEMS



Angels' Attic

125 S. Christian
Phone: 620-345-2200

Open:
Tuesday 2-4 p.m.
Thursday 2-6 p.m.

Clothing and household items for free or donation.

*Share what you have
Take what you need
Pass it forward*