

LEA Name : Huntingdon County CTC
Address : PO Box E
Mill Creek, PA 17060

County : Huntingdon
AUN Number : 111312607
LEA Type : CTC

Annual Financial Report Accuracy Certification Statement

For Fiscal Year Ending
6/30/2024

Pennsylvania Department of Education
&
Office of Comptroller Operations

PDE-2056: Intermediate Unit
PDE-2057: School District, AVTS/CTC, Charter School,
and Special Program Jointure

CERTIFICATION: By signing this page I agree that the electronic data submitted is a complete and accurate statement of the financial operations and status of the local education agency for the fiscal year. It has been prepared in accordance with generally accepted accounting principles and established Commonwealth of PA reporting guidelines.

Chief School Administrator Signature

Rachel Rose
Karen S. Henry

Board Secretary Signature

Date

11/13/24

Date

11/13/2024

Marissa Booze

(814)643-0951

Ext :1015

Contact Person

Contact Person Telephone Number

mbooze@hccic.org

Contact Person E-mail Address

Contact Person Fax Number

Audit Certification
Annual Financial Report:
For Fiscal Year Ending 6/30/2024
(Pursuant to PA School Code Section 218(b))

LEA Name : Huntingdon County CTC
AUN Number : 111312607
County : Huntingdon

Audit Certification Due: 12/31/2024

This certification is applicable to the Annual Financial Report data submitted through the Consolidated Financial Reporting System (CFRS).

CERTIFICATION: By signing this page I agree that the financial statements of the school have been properly audited as noted above pursuant to Article XXIV, and in the auditor's professional opinion, the Annual Financial Report (PDE-2057) submitted through CFRS is materially consistent with the audited financial statements.

Chief School Administrator

Signature  Date 11/13/24

Board Secretary

Signature  Date 11/13/2024

Marissa Booze

(814)643-0951

Ext :1015

Contact Person

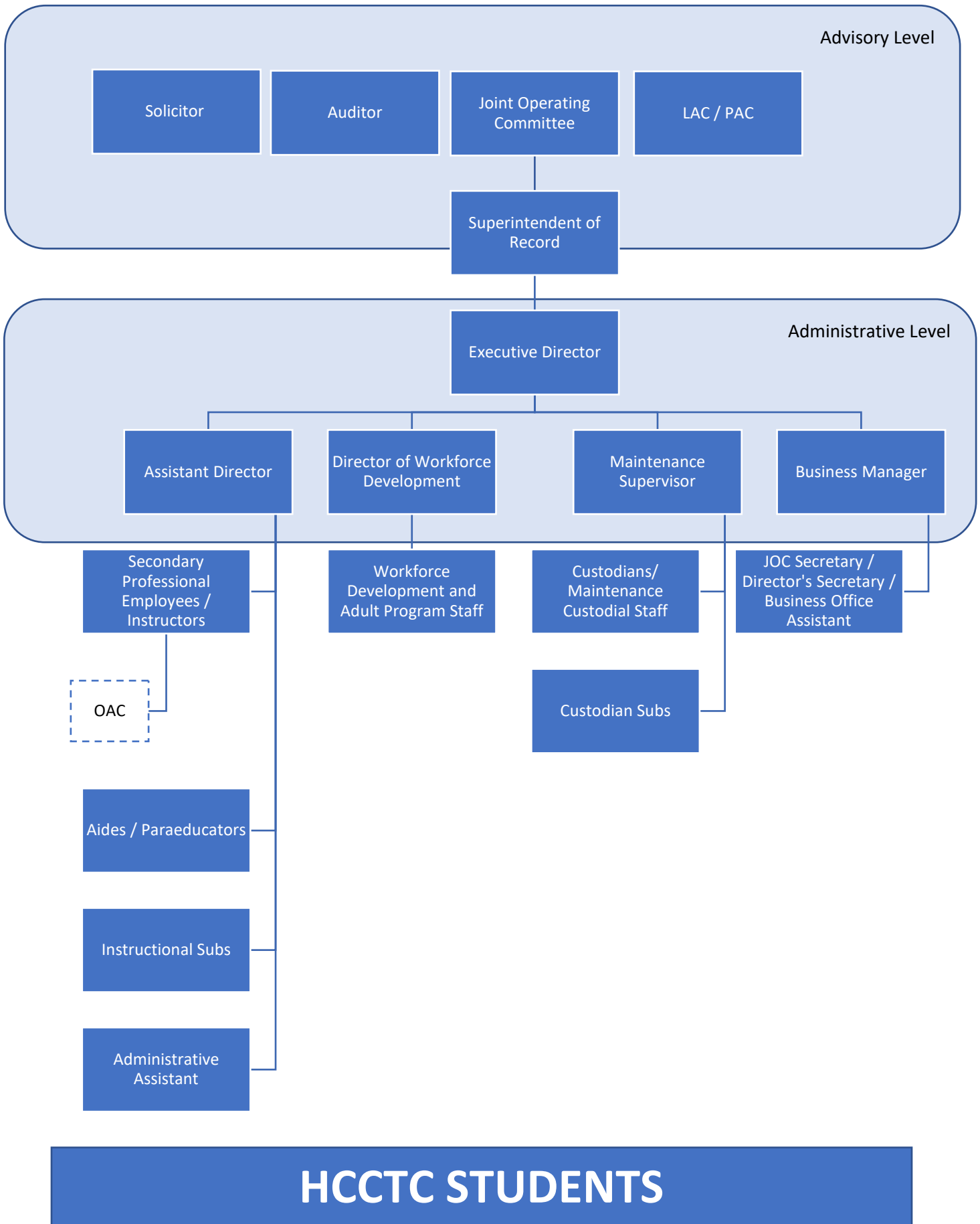
Contact Person Telephone Number

mbooze@hcctc.org

Contact Person E-mail Address

Contact Person Fax Number

HCCTC Organizational Chart



5. Capital Assets

Capital assets, which include land, land improvements, buildings, building and leasehold improvements, computer hardware, teleconferencing equipment, audio visual equipment, office furniture and equipment, classroom equipment, teaching aides, and vehicles are reported in the government-wide financial statements. The Center defines capital assets as assets with an initial, individual cost of more than \$1,500 for computer hardware, teleconferencing equipment, audio visual equipment, office furniture and equipment, classroom equipment, teaching aides, and vehicles and \$0 for land, land improvements, buildings, and building and leasehold improvements and an estimated useful life in excess of one year. Such assets are recorded at historical cost or estimated historical cost if purchased or constructed. Donated capital assets are recorded at estimated fair value at the date of donation.

The cost of normal maintenance and repairs that do not add to the value of the asset or materially extend assets lives are not capitalized.

<u>Val Number</u>	<u>Description</u>	<u>Justification</u>
30430	Revenue Detail: AFR amount must equal or exceed PDE FAI System amount. 7220, AFR Rev Detail: \$551,839.36 7220, PDE FAI System: \$563,282.18	Revenues of \$11,342.82 from PDE FAI were included in fund 58 (enterprise fund).
40980	No expenditures have been reported for Gifted Education within function 1243. Correct this reporting area, or verify that the school does not provide gifted education services to any students.	The CTC does not have any gifted education service expenses.
41000	No Federal expenditures have been reported in function 1200. Please correct or provide an explanation.	The CTC does not have a special education program. The special ed liaison expenses are included in the 2260 series.

Amounts Expressed in Whole Dollars	<u>General Fund</u> <u>(10)</u>	<u>Student Sponsored</u> <u>Activity Fund</u> <u>(21)</u>	<u>Public Purpose Trust</u> <u>(27)</u>	<u>Other Compt Approved</u> <u>(28)</u>	<u>Athletic / Activity</u> <u>(29)</u>
Assets And Deferred Outflows Of Resources					
Assets					
0100 Cash and Cash Equivalents	291,280				
0110 Investments					
0120 Taxes Receivable					
0130 Due From Other Funds					
0141 Due From Other Governments					
0142 State Revenue Receivable	135,464				
0143 Federal Revenue Receivable					
0145 Other Intergovernmental Revenue Receivable					
0146 Due from Primary Government					
0147 Due from Component Unit					
0150 Other Receivables	186,924				
0170 Inventories					
0180 Prepaid Expenses (Expenditures)	94,428				
0190 Other Current Assets					
Total Assets	\$708,096				
0910 Deferred Outflows of Resources					
Total Assets And Deferred Outflows Of Resources	\$708,096				

Amounts Expressed in Whole Dollars

	<u>Capital Reserve (690.</u> <u>1850)</u> <u>(31)</u>	<u>Other Capital Projects</u> <u>Fund</u> <u>(39)</u>	<u>Debt Service</u> <u>(40)</u>	<u>Permanent</u> <u>(90)</u>	<u>Total Governmental</u> <u>Funds</u>
Assets And Deferred Outflows Of Resources					
Assets					
0100 Cash and Cash Equivalents	221,362				512,642
0110 Investments					
0120 Taxes Receivable					
0130 Due From Other Funds	142,982				142,982
0141 Due From Other Governments					
0142 State Revenue Receivable					135,464
0143 Federal Revenue Receivable					
0145 Other Intergovernmental Revenue Receivable					
0146 Due from Primary Government					
0147 Due from Component Unit					
0150 Other Receivables					186,924
0170 Inventories					
0180 Prepaid Expenses (Expenditures)					94,428
0190 Other Current Assets					
Total Assets	\$364,344				\$1,072,440
0910 Deferred Outflows of Resources					
Total Assets And Deferred Outflows Of Resources	\$364,344				\$1,072,440

Amounts Expressed in Whole Dollars

	<u>General Fund</u> <u>(10)</u>	<u>Student Sponsored</u> <u>Activity Fund</u> <u>(21)</u>	<u>Public Purpose Trust</u> <u>(27)</u>	<u>Other Compt Approved</u> <u>(28)</u>	<u>Athletic / Activity</u> <u>(29)</u>
Liabilities And Deferred Inflows Of Resources And Fund Balances					
Liabilities					
0400 Due to Other Funds	306,295				
0411 Due to Other Governments	214				
0412 Due to Primary Government					
0413 Due to Component Unit					
0420 Accounts Payable	107,134				
0430 Contracts Payable					
0440 Current Portion of Long-Term Debt					
0450 Short-Term Payables					
0461 Accrued Salaries and Benefits	176,074				
0462 Payroll Deductions and Withholding	102,849				
0480 Unearned Revenues	1,003				
0490 Other Current Liabilities	14,527				
Total Liabilities	\$708,096				
0950 Deferred Inflows of Resources					
Fund Balances					
0810 Nonspendable Fund Balance					
0820 Restricted Fund Balance					
0830 Committed Fund Balance					
0840 Assigned Fund Balance					
0850 Unassigned Fund Balance					
Total Fund Balances					
Total Liabilities, Deferred Inflows Of Resources And Fund Balances	\$708,096				

Amounts Expressed in Whole Dollars

	<u>Capital Reserve (690.</u> <u>1850)</u> <u>(31)</u>	<u>Other Capital Projects</u> <u>Fund</u> <u>(39)</u>	<u>Debt Service</u> <u>(40)</u>	<u>Permanent</u> <u>(90)</u>	<u>Total Governmental</u> <u>Funds</u>
Liabilities And Deferred Inflows Of Resources And Fund Balances					
Liabilities					
0400 Due to Other Funds					306,295
0411 Due to Other Governments					214
0412 Due to Primary Government					
0413 Due to Component Unit					
0420 Accounts Payable	61,292				168,426
0430 Contracts Payable					
0440 Current Portion of Long-Term Debt					
0450 Short-Term Payables					
0461 Accrued Salaries and Benefits					176,074
0462 Payroll Deductions and Withholding					102,849
0480 Unearned Revenues					1,003
0490 Other Current Liabilities					14,527
Total Liabilities	\$61,292				\$769,388
0950 Deferred Inflows of Resources					
Fund Balances					
0810 Nonspendable Fund Balance					
0820 Restricted Fund Balance					
0830 Committed Fund Balance					
0840 Assigned Fund Balance	303,052				303,052
0850 Unassigned Fund Balance					
Total Fund Balances	\$303,052				\$303,052
Total Liabilities, Deferred Inflows Of Resources And Fund Balances	\$364,344				\$1,072,440

Amounts Expressed in Whole Dollars	<u>General Fund</u> <u>(10)</u>	<u>Student Sponsored</u> <u>Activity Fund</u> <u>(21)</u>	<u>Public Purpose Trust</u> <u>(27)</u>	<u>Other Compt Approved</u> <u>(28)</u>	<u>Athletic / Activity</u> <u>(29)</u>
Revenues					
6000 Revenue from Local Sources	2,283,788				
7000 Revenue from State Sources	1,008,956				
8000 Revenue from Federal Sources	123,904				
Total Revenues	\$3,416,648				
Expenditures					
1000 Instruction	1,804,694				
2000 Support Services	1,355,102				
3000 Operation of Non-Instructional Services	24,835				
4000 Facilities Acquisition, Construction and Improvement Services	3,763				
5110 Debt Service	85,272				
5130 Refund of Prior Year Revenues / Receipts					
5140 Leases and Other Right-to-Use Arrangements					
Total Expenditures	\$3,273,666				
Excess (Deficiency) Of Revenues Over Expenditures	\$142,982				
Other Financing Sources (Uses)					
9110 Face Value of Bonds Issued					
9120 Proceeds from Refunding of Bonds					
9130 Bond Premiums					
9200 Proceeds from Extended Term Financing, Leases, and Other Right-to-Use Arrangements					
9300 Interfund Transfers - IN					
9400 Sale of or Compensation for Loss of Fixed Assets					
9710 Transfers from Component Units					
9720 Transfers from Primary Governments					
9910 Other Financing Sources Not Listed in the 9000 Series					
9990 Insurance Recoveries					
5120 Debt Service – Refunded Bonds					
5150 Bond Discounts					
5200 Interfund Transfers – Out	142,982				
5300 Transfers Out to Component Units/Primary Governments					
Total Other Financing Sources (Uses)	(\$142,982)				

Amounts Expressed in Whole Dollars	<u>Capital Reserve (690.1850)</u> <u>(31)</u>	<u>Other Capital Projects Fund</u> <u>(39)</u>	<u>Debt Service</u> <u>(40)</u>	<u>Permanent</u> <u>(90)</u>	<u>Total Governmental Funds</u>
Revenues					
6000 Revenue from Local Sources					2,284,887
7000 Revenue from State Sources					1,008,956
8000 Revenue from Federal Sources					123,904
Total Revenues	\$1,099				\$3,417,747
Expenditures					
1000 Instruction					1,804,694
2000 Support Services					1,355,102
3000 Operation of Non-Instructional Services					24,835
4000 Facilities Acquisition, Construction and Improvement Services		61,292			65,055
5110 Debt Service					85,272
5130 Refund of Prior Year Revenues / Receipts					
5140 Leases and Other Right-to-Use Arrangements					
Total Expenditures		\$61,292			\$3,334,958
Excess (Deficiency) Of Revenues Over Expenditures	(\$60,193)				\$82,789
Other Financing Sources (Uses)					
9110 Face Value of Bonds Issued					
9120 Proceeds from Refunding of Bonds					
9130 Bond Premiums					
9200 Proceeds from Extended Term Financing, Leases, and Other Right-to-Use Arrangements					
9300 Interfund Transfers - IN		142,982			142,982
9400 Sale of or Compensation for Loss of Fixed Assets					
9710 Transfers from Component Units					
9720 Transfers from Primary Governments					
9910 Other Financing Sources Not Listed in the 9000 Series					
9990 Insurance Recoveries					
5120 Debt Service – Refunded Bonds					
5150 Bond Discounts					
5200 Interfund Transfers – Out					142,982
5300 Transfers Out to Component Units/Primary Governments					
Total Other Financing Sources (Uses)		\$142,982			\$0

Amounts Expressed in Whole Dollars

<u>General Fund</u> <u>(10)</u>	<u>Student Sponsored</u> <u>Activity Fund</u> <u>(21)</u>	<u>Public Purpose Trust</u> <u>(27)</u>	<u>Other Compt Approved</u> <u>(28)</u>	<u>Athletic / Activity</u> <u>(29)</u>
------------------------------------	---	--	--	---

Special And Extraordinary Items

- 9920 Special Items – Gains
- 9930 Extraordinary Items – Gains
- 5520 Special Items – Losses
- 5530 Extraordinary Items – Losses

Net Change In Fund Balances

Fund Balance

- 0001 Fund Balance - Beginning of Fiscal Year

Fund Balance - End Of Year

Amounts Expressed in Whole Dollars	<u>Capital Reserve (690.</u> <u>1850)</u> <u>(31)</u>	<u>Other Capital Projects</u> <u>Fund</u> <u>(39)</u>	<u>Debt Service</u> <u>(40)</u>	<u>Permanent</u> <u>(90)</u>	<u>Total Governmental</u> <u>Funds</u>
Special And Extraordinary Items					
9920 Special Items – Gains					
9930 Extraordinary Items – Gains					
5520 Special Items – Losses					
5530 Extraordinary Items – Losses					
Net Change In Fund Balances	\$82,789				\$82,789
Fund Balance					
0001 Fund Balance - Beginning of Fiscal Year	220,262				220,262
Fund Balance - End Of Year	\$303,051				\$303,051

Amounts Expressed in Whole Dollars	<u>Food Service</u> <u>(51)</u>	<u>Child Care</u> <u>Operations</u> <u>(52)</u>	<u>Other Enterprise</u> <u>(58)</u>	<u>TOTAL</u>	<u>Internal Service</u> <u>(60)</u>
Assets And Deferred Outflows Of Resources					
Current Assets					
0100 Cash and Cash Equivalents			265,515	265,515	
0110 Investments					
0130 Due From Other Funds			163,313	163,313	
0141 Due From Other Governments					
0142 State Revenue Receivable					
0143 Federal Revenue Receivable					
0146 Due from Primary Government					
0147 Due from Component Unit					
0150 Other Receivables			15,598	15,598	
0170 Inventories					
0180 Prepaid Expenses (Expenditures)					
0190 Other Current Assets					
Total Current Assets			\$444,426	\$444,426	
Noncurrent Assets					
0211 Land					
0212 Site Improvements (Net)			12,098	12,098	
0220 Buildings and Building Improvements (Net)			10,084	10,084	
0230 Tangible Property and Intangible Right-To-Use Assets (Net)			113,372	113,372	
0250 Construction in Progress			585,670	585,670	
0260 Long Term Prepayments					
0290 Other Noncurrent Assets					
Total Noncurrent Assets			\$721,224	\$721,224	
0910 Deferred Outflows of Resources			7,438	7,438	
Total Assets And Deferred Outflows Of Resources			\$1,173,088	\$1,173,088	

Amounts Expressed in Whole Dollars	<u>Food Service</u> <u>(51)</u>	<u>Child Care</u> <u>Operations</u> <u>(52)</u>	<u>Other Enterprise</u> <u>(58)</u>	<u>TOTAL</u>	<u>Internal Service</u> <u>(60)</u>
Liabilities And Deferred Inflows Of Resources And Net Position					
Current Liabilities					
0400 Due to Other Funds					
0411 Due to Other Governments					
0413 Due to Component Unit					
0420 Accounts Payable			4,748	4,748	
0430 Contracts Payable					
0440 Current Portion of Long-Term Debt					
0450 Short-Term Payables					
0461 Accrued Salaries and Benefits			2,982	2,982	
0462 Payroll Deductions and Withholding					
0480 Unearned Revenues					
0490 Other Current Liabilities			602	602	
Total Current Liabilities			\$8,332	\$8,332	
Noncurrent Liabilities					
0510 Bonds Payable					
0520 Extended-Term Financing Agreements Payable					
0530 Lease and Other Right-To-Use Obligations					
0540 Accumulated Compensated Absences			14,476	14,476	
0550 Authority Lease Obligations					
0560 Other Post-Employment Benefits (OPEB)			12,499	12,499	
0570 Net Pension Liability					
0599 Other Noncurrent Liabilities			224,665	224,665	
Total Noncurrent Liabilities			\$251,640	\$251,640	
Total Liabilities			\$259,972	\$259,972	
0950 Deferred Inflows of Resources			23,523	23,523	
Net Position					
0791 Net Investment in Capital Assets			72,491	72,491	
0008 Restricted Net Position (0792 – 0798)					
0799 Unrestricted Net Position			817,102	817,102	
Total Net Position			\$889,593	\$889,593	
Total Liabilities And Deferred Inflows Of Resources And Net Position			\$1,173,088	\$1,173,088	

Amounts Expressed in Whole Dollars	<u>Food Service</u> <u>(51)</u>	<u>Child Care Operations</u> <u>(52)</u>	<u>Other Enterprise</u> <u>(58)</u>	<u>TOTAL</u>	<u>Internal Service</u> <u>(60)</u>
Operating Revenues					
6600 Food Service Revenue					
0071 Charges for Services			130,174	130,174	
0072 Other Operating Revenue					
Total Operating Revenues			\$130,174	\$130,174	
Operating Expenses					
100 Personnel Services – Salaries			98,370	98,370	
200 Personnel Services – Employee Benefits			88,191	88,191	
300 Purchased Professional and Technical Services			210	210	
400 Purchased Property Services			14,915	14,915	
500 Other Purchased Services			9,192	9,192	
600 Supplies			32,934	32,934	
740 Depreciation			10,696	10,696	
770 Amortization Expense					
810 Dues and Fees			19,367	19,367	
880 Refunds of Prior Years' Receipts					
890 Miscellaneous Expenditures					
Total Operating Expenses			\$273,875	\$273,875	
Operating Income (Loss)			(\$143,701)	(\$143,701)	
Non Operating Revenues (Expenses)					
6500 Earnings on Investments			137	137	
6830 Federal Revenue from Intermediary Sources					
6920 Contributions and Donations from Private Sources					
6930 Gains or Losses on Sale of Fixed Assets					
6991 Refunds of a Prior Year Expenditure					
7000 Revenue from State Sources			35,433	35,433	
8000 Revenue from Federal Sources					
9990 Insurance Recoveries					
820 Claims and Judgments Against the LEA					
830 Interest					
TOTAL Non Operating Revenues (Expenses)			\$35,570	\$35,570	
Income (Loss) Before Contributions And Transfers			(\$108,131)	(\$108,131)	

Amounts Expressed in Whole Dollars	<u>Food Service</u> <u>(51)</u>	<u>Child Care Operations</u> <u>(52)</u>	<u>Other Enterprise</u> <u>(58)</u>	<u>TOTAL</u>	<u>Internal Service</u> <u>(60)</u>
Contributions, Transfers, and Special and Extraordinary Items					
5200 Interfund Transfers – Out					
5300 Transfers Out to Component Units/Primary Governments					
5520 Special Items – Losses					
5530 Extraordinary Items – Losses					
9300 Interfund Transfers - IN					
9500 Capital Contributions					
9700 Transfers IN From Component Units/Primary Governments					
9920 Special Items – Gains					
9930 Extraordinary Items – Gains					
Change In Net Position			(\$108,131)	(\$108,131)	
0002 Net Position - Beginning of Fiscal Year			997,723	997,723	
0003 Accounting Changes / Residual Equity Transfers					
Net Position - End Of Year			\$889,592	\$889,592	

Amounts Expressed in Whole Dollars	<u>Food Service</u> <u>(51)</u>	<u>Child Care Operations</u> <u>(52)</u>	<u>Other Enterprise</u> <u>(58)</u>	<u>TOTAL</u>	<u>Internal Service(60)</u>
Cash Flows From Operating Activities					
0011 Cash Receipts From Users			193,580	193,580	
0012 Cash Receipts From Assessments Made to Other Funds					
0013 Cash Receipts From Earnings on Investments					
0014 Cash Receipts From Other Operating Revenue					
0015 Cash Payments To Employees For Services			185,887	185,887	
0016 Cash Payments For Insurance Claims					
0017 Cash Payments To Suppliers For Goods and Services			79,637	79,637	
0018 Cash Payments For Other Operating Expenses					
Net Cash Provided By (Used For) Operating Activities			(\$71,944)	(\$71,944)	
Cash Flows From Non-Capital Financing Activities					
0021 Receipts From Local Sources - 6000					
0022 Receipts From State Sources - 7000			35,433	35,433	
0023 Receipts From Federal Sources -8000					
0024 Notes and Loans Received (Repaid)					
0025 Interest Paid on Notes/Loans - 5100-830					
0026 Operating Transfers In (Out)/Residual Equity Trans					
0027 Operating Transfers In (Out) Primary Government / Comp Unit					
0028 Receipts From Refund of Prior Year Expenditures - 6991					
0029 Special and Extraordinary Gains (losses)					
0030 Receipts from Insurance Recoveries -9990					
Net Cash Prov By (Used for) Non-Capital Financing Activities			\$35,433	\$35,433	
Cash Flows From Capital and Related Financing Activities					
0031 Payments For Fac Acq, Const, and Imp - 4000			(2,500)	(2,500)	
0032 Proceeds from Disposal of Capital Assets					
0033 Proceeds From Extended Term Financing - 9200					
0034 Principal Paid on Financing Agreements					
0035 Interest Paid on Financing Agreements - 5100-830					
0036 (Inc) Dec in Contributed Capital					
Net Cash Prov By (Used for) Capital and Related Financing Activities			(\$2,500)	(\$2,500)	
Cash Flows From Investing Activities					
0041 Earnings on Investments - 6500			137	137	
0042 Purchase of Inv Securities / Deposits to Inv Pools					
0043 Receipts From Investment Pool Withdrawals					
0044 Proceeds from Sale and Maturity of Inv Securities					

LEA : 111312607 Huntingdon County CTC

Printed 11/18/2024 12:47:09 PM

0045 Loans Received (Paid)

Net Cash Prov By (Used for) Investing Activities	\$137	\$137
---	--------------	--------------

	<u>Food Service</u> <u>(51)</u>	<u>Child Care Operations</u> <u>(52)</u>	<u>Other Enterprise</u> <u>(58)</u>	<u>TOTAL</u>	<u>Internal Service</u> <u>(60)</u>
Net Increase (Decrease) in Cash Flows			(38,874)	(38,874)	
0004 Cash and Cash Equivalents Beginning of Year			304,389	304,389	
Cash and Cash Equivalents at Year End			\$265,515	\$265,515	
<hr/>					
Reconciliation of Operating Income (Loss) To Net Cash Provided by (Used For) Operating Activities					
0005 Operating Income (Loss) per REP			(143,701)	(143,701)	
Adjustments					
0051 Depreciation and Net Amortization			10,696	10,696	
0052 Provision for Uncollectible Accounts					
0053 Other Adjustments					
Effect of Changes in Assets, Liabilities, Deferred Outflows and Deferred Inflows					
0054 (Inc) Dec In Accounts Receivable (0120-0150)			18,382	18,382	
0055 Advances to Other Funds			45,024	45,024	
0056 (Inc) Dec in Inventories (0170)					
0057 (Inc) Dec in Prepaid Expenses (0180)					
0058 (Inc) Dec in Other Current or Noncurrent Assets					
0064 Deferred Outflows (0910)			(2,884)	(2,884)	
0059 Inc (Dec) in Accounts Payable (0400-0450)			(19,408)	(19,408)	
0060 Inc (Dec) in Accrued Salaries/Benefits (0461)			2,292	2,292	
0065 Inc (Dec) in Net Pension Liabilities (0570)			28,868	28,868	
0066 Inc (Dec) in Other Postemp Benefit Oblig (0560)			(785)	(785)	
0061 Inc (Dec) in Payroll Deductions/Withholding (0462)					
0062 Inc (Dec) in Unearned Revenue (0480)					
0063 Inc (Dec) in Other Current or Noncurrent Liabilities			(4,534)	(4,534)	
0067 Deferred Inflows (0950)			(5,894)	(5,894)	
Total Adjustments			\$71,757	\$71,757	
Cash Provided By (Used for) Total			(\$71,944)	(\$71,944)	

**COMBINED STATEMENT OF CASH FLOWS
SCHEDULE OF NONCASH INVESTING, CAPITAL, AND FINANCING ACTIVITIES**

Explanation of Transaction and Balance Sheet Effect	Amount
Total	

LEA : 111312607 Huntingdon County CTC

Printed 11/18/2024 12:47:10 PM

Amounts Expressed in Whole Dollars	<u>Private Purpose Trust</u> <u>(71)</u>	<u>Investment Trust</u> <u>(72)</u>	<u>Pension Trust</u> <u>(73)</u>	<u>Student Activity Custodial</u> <u>(81)</u>
Assets And Deferred Outflows Of Resources				
Assets				
0100 Cash and Cash Equivalents				24,442
0110 Investments				
0130 Due From Other Funds				
0140 Due from Other Governments, Primary Government and Component Units				
0150 Other Receivables				
0170 Inventories				
0180 Prepaid Expenses (Expenditures)				
0190 Other Current Assets				
0220 Buildings and Building Improvements (Net)				
0230 Tangible Property and Intangible Right-To-Use Assets (Net)				
Total Assets				\$24,442
0910 Deferred Outflows of Resources				
Total Assets And Deferred Outflows Of Resources				\$24,442

LEA : 111312607 Huntingdon County CTC

Printed 11/18/2024 12:47:10 PM

Amounts Expressed in Whole Dollars

Other Custodial Fiduciary Component Units Total Fiduciary Funds
(89) (98)

Assets And Deferred Outflows Of Resources

Assets		
0100 Cash and Cash Equivalents		24,442
0110 Investments		
0130 Due From Other Funds		
0140 Due from Other Governments, Primary Government and Component Units		
0150 Other Receivables		
0170 Inventories		
0180 Prepaid Expenses (Expenditures)		
0190 Other Current Assets		
0220 Buildings and Building Improvements (Net)		
0230 Tangible Property and Intangible Right-To-Use Assets (Net)		
Total Assets		\$24,442
0910 Deferred Outflows of Resources		
Total Assets And Deferred Outflows Of Resources		\$24,442

LEA : 111312607 Huntingdon County CTC

Printed 11/18/2024 12:47:10 PM

Amounts Expressed in Whole Dollars

Private Purpose Trust
(71)

Investment Trust
(72)

Pension Trust
(73)

Student Activity Custodial
(81)

Liabilities, Deferred Inflows Of Resources And Net Position

Liabilities

- 0400 Due to Other Funds
- 0410 Due to Other Governments, Primary Government and Component Units
- 0420 Accounts Payable
- 0430 Contracts Payable
- 0450 Short-Term Payables
- 0460 Payroll Accruals and Withholdings
- 0480 Unearned Revenues
- 0490 Other Current Liabilities

Total Liabilities

- 0950 Deferred Inflows of Resources

Net Position

- 0791 Net Investment in Capital Assets
- 0009 Restricted Net Position (0792 – 0798) 24,442
- 0799 Unrestricted Net Position

Total Net Position \$24,442

Total Liabilities, Deferred Inflows Of Resources And Net Position \$24,442

LEA : 111312607 Huntingdon County CTC

Printed 11/18/2024 12:47:10 PM

Amounts Expressed in Whole Dollars	<u>Other Custodial</u> <u>(89)</u>	<u>Fiduciary Component Units</u> <u>(98)</u>	<u>Total Fiduciary Funds</u>
Liabilities, Deferred Inflows Of Resources And Net Position			
Liabilities			
0400 Due to Other Funds			
0410 Due to Other Governments, Primary Government and Component Units			
0420 Accounts Payable			
0430 Contracts Payable			
0450 Short-Term Payables			
0460 Payroll Accruals and Withholdings			
0480 Unearned Revenues			
0490 Other Current Liabilities			
Total Liabilities			
0950 Deferred Inflows of Resources			
Net Position			
0791 Net Investment in Capital Assets			
0009 Restricted Net Position (0792 – 0798)			24,442
0799 Unrestricted Net Position			
Total Net Position			\$24,442
Total Liabilities, Deferred Inflows Of Resources And Net Position			\$24,442

Amounts Expressed in Whole Dollars	<u>Private Purpose Trust</u> (71)	<u>Investment Trust</u> (72)	<u>Pension Trust</u> (73)	<u>Student Activity</u> <u>Custodial</u> (81)	<u>Other Custodial</u> (89)	<u>Fiduciary Component</u> <u>Units</u> (98)
Additions						
0091 Gifts and Contributions						
0095 Net Investment Earnings						
0092 Other Additions				1,618		
Deductions						
0093 Scholarships Awarded						
0094 Other Deductions						
Change In Net Position				\$1,618		
0006 Net Position – Beginning of Fiscal Year				22,824		
0007 Net Position Held in Trust for Pension Benefits						
Net Position - End of Fiscal Year				\$24,442		

Amounts Expressed in Whole Dollars	<u>Total Fiduciary Funds</u>
Additions	
0091 Gifts and Contributions	
0095 Net Investment Earnings	
0092 Other Additions	1,618
Deductions	
0093 Scholarships Awarded	
0094 Other Deductions	
Change in Net Position	\$1,618
0006 Net Position – Beginning of Fiscal Year	22,824
0007 Net Position Held in Trust for Pension Benefits	
Net Position - End of Fiscal Year	\$24,442

	Revenue Reported <u>In Current Year</u>
<u>Revenue from Local Sources</u>	
6500 Earnings on Investments	183.11
6910 Rentals	250.00
6920 Contributions and Donations from Private Sources	6,800.00
6946 Receipts from Member Districts - AVTS/CTC, SPJ	2,127,690.00
6949 Other Tuition from Patrons	136,476.36
6999 Other Revenues Not Specified Above	12,388.05
TOTAL Revenue from Local Sources	\$2,283,787.52

**Revenue Reported
In Current Year**

Revenue from State Sources

7220 Vocational Education	551,839.36
7362 School Mental Health & Safety and Security Grants	70,025.12
7509 Supplemental Equipment Grants	81,277.48
7810 State Share of Social Security and Medicare Taxes	54,641.63
7820 State Share of Retirement Contributions	251,172.14
TOTAL Revenue from State Sources	\$1,008,955.73

	Revenue Reported <u>In Current Year</u>
<u>Revenue from Federal Sources</u>	
8521 Vocational Education - Operating Expenditures	97,099.00
8749 Other CARES Act Funding	24,351.57
8755 ARP ESSER Emergency Relief for Other Educational Entities	2,453.56
TOTAL Revenue from Federal Sources	\$123,904.13
TOTAL FROM ALL SOURCES	\$3,416,647.38

	<u>General Fund (10)</u>	<u>Student Sponsored Activity Fund (21)</u>	<u>Public Purpose Trust (27)</u>	<u>Other Compt Approved (28)</u>	<u>Athletic / Activity (29)</u>	<u>Capital Reserve (690, 1850) (31)</u>
6000 Revenue from Local Sources						
6500 Earnings on Investments	183.11					1,099.09
6910 Rentals	250.00					
6920 Contributions and Donations from Private Sources	6,800.00					
6946 Receipts from Member Districts - AVTS/CTC, SPJ	2,127,690.00					
6949 Other Tuition from Patrons	136,476.36					
6999 Other Revenues Not Specified Above	12,388.05					
6000 Total Revenue from Local Sources	\$2,283,787.52					\$1,099.09
7000 Revenue from State Sources						
7220 Vocational Education	551,839.36					
7362 School Mental Health & Safety and Security Grants	70,025.12					
7509 Supplemental Equipment Grants	81,277.48					
7810 State Share of Social Security and Medicare Taxes	54,641.63					
7820 State Share of Retirement Contributions	251,172.14					
7000 Total Revenue from State Sources	\$1,008,955.73					
8000 Revenue from Federal Sources						
8521 Vocational Education - Operating Expenditures	97,099.00					
8749 Other CARES Act Funding	24,351.57					
8755 ARP ESSER Emergency Relief for Other Educational Entities	2,453.56					
8000 Total Revenue from Federal Sources	\$123,904.13					
9000 Other Financing Sources						
9310 General Fund Transfers						142,981.70
9000 Total Other Financing Sources						\$142,981.70
Total From All Sources	\$3,416,647.38					\$144,080.79

	<u>Other Capital Projects Fund (39)</u>	<u>Debt Service (40)</u>	<u>Permanent (90)</u>	<u>Total</u>
6000 Revenue from Local Sources				
6500 Earnings on Investments				1,282.20
6910 Rentals				250.00
6920 Contributions and Donations from Private Sources				6,800.00
6946 Receipts from Member Districts - AVTS/CTC, SPJ				2,127,690.00
6949 Other Tuition from Patrons				136,476.36
6999 Other Revenues Not Specified Above				12,388.05
6000 Total Revenue from Local Sources				\$2,284,886.61
7000 Revenue from State Sources				
7220 Vocational Education				551,839.36
7362 School Mental Health & Safety and Security Grants				70,025.12
7509 Supplemental Equipment Grants				81,277.48
7810 State Share of Social Security and Medicare Taxes				54,641.63
7820 State Share of Retirement Contributions				251,172.14
7000 Total Revenue from State Sources				\$1,008,955.73
8000 Revenue from Federal Sources				
8521 Vocational Education - Operating Expenditures				97,099.00
8749 Other CARES Act Funding				24,351.57
8755 ARP ESSER Emergency Relief for Other Educational Entities				2,453.56
8000 Total Revenue from Federal Sources				\$123,904.13
9000 Other Financing Sources				
9310 General Fund Transfers				142,981.70
9000 Total Other Financing Sources				\$142,981.70
Total From All Sources				\$3,560,728.17

	<u>General Fund (10)</u>	<u>Student Sponsored Activity Fund (21)</u>	<u>Public Purpose Trust (27)</u>	<u>Other Compt Approved (28)</u>	<u>Athletic / Activity (29)</u>	<u>Capital Reserve (690. 1850) (31)</u>
Revenue from Local Sources	2,283,787.52					1,099.09
Revenue from State Sources	1,008,955.73					
Revenue from Federal Sources	123,904.13					
Other Financing Sources						142,981.70
Total From All Sources	\$3,416,647.38					\$144,080.79

	<u>Other Capital Projects Fund (39)</u>	<u>Debt Service (40)</u>	<u>Permanent (90)</u>	<u>Total</u>
Revenue from Local Sources				2,284,886.61
Revenue from State Sources				1,008,955.73
Revenue from Federal Sources				123,904.13
Other Financing Sources				142,981.70
Total From All Sources				\$3,560,728.17

General Fund (10)

	<u>Total</u>
1000 Instruction	
100 <u>Personnel Services – Salaries</u>	
100 Personnel Services – Salaries	721,309.37
Total Personnel Services – Salaries	\$721,309.37
200 <u>Personnel Services – Employee Benefits</u>	
210 Group Insurance – Contracted Provider	226,502.56
220 Social Security Contributions	52,771.01
230 PSERS Retirement Contributions	239,878.81
250 Unemployment Compensation	1,201.17
260 Workers’ Compensation	4,900.65
280 Other Post-Employment Benefits (OPEB)	(162.96)
291 Other Retirement Plans	22,105.34
292 Health Savings Accounts	34,050.00
Total Personnel Services – Employee Benefits	\$581,246.58
300 <u>Purchased Professional and Technical Services</u>	
390 Other Purchased Professional and Technical Services	3,833.00
Total Purchased Professional and Technical Services	\$3,833.00
400 <u>Purchased Property Services</u>	
410 Cleaning Services	1,489.53
430 Repairs and Maintenance Services	7,540.01
440 Rentals	3,782.17
Total Purchased Property Services	\$12,811.71
500 <u>Other Purchased Services</u>	
510 Student Transportation Services	4,816.61
580 Travel	4,079.41
599 Other Miscellaneous Purchased Services	4,748.00
Total Other Purchased Services	\$13,644.02
600 <u>Supplies</u>	
610 General Supplies	287,460.28
620 Energy	2,211.03
630 Food	1,906.38
640 Books and Periodicals	17,812.15
650 Supplies & Fees – Technology Related	43,695.20
Total Supplies	\$353,085.04
700 <u>Property</u>	
752 Capital Equipment – Original and Additional	115,563.78
Total Property	\$115,563.78
800 <u>Other Objects</u>	
810 Dues and Fees	3,200.00
Total Other Objects	\$3,200.00
Total 1000 Instruction	\$1,804,693.50

General Fund (10)

1300 Vocational Education

	<u>Elementary</u>	<u>Secondary</u>	<u>Federal</u>	<u>Total</u>
100 Personnel Services – Salaries				
100 Personnel Services – Salaries		716,670.06	4,639.31	721,309.37
Total Personnel Services – Salaries		\$716,670.06	\$4,639.31	\$721,309.37
200 Personnel Services – Employee Benefits				
210 Group Insurance – Contracted Provider		226,502.56		226,502.56
220 Social Security Contributions		52,644.30	126.71	52,771.01
230 PSERS Retirement Contributions		239,407.68	471.13	239,878.81
250 Unemployment Compensation		1,201.17		1,201.17
260 Workers' Compensation		4,900.65		4,900.65
280 Other Post-Employment Benefits (OPEB)		(162.96)		(162.96)
291 Other Retirement Plans		22,105.34		22,105.34
292 Health Savings Accounts		34,050.00		34,050.00
Total Personnel Services – Employee Benefits		\$580,648.74	\$597.84	\$581,246.58
300 Purchased Professional and Technical Services				
390 Other Purchased Professional and Technical Services		3,083.00	750.00	3,833.00
Total Purchased Professional and Technical Services		\$3,083.00	\$750.00	\$3,833.00
400 Purchased Property Services				
410 Cleaning Services		1,489.53		1,489.53
430 Repairs and Maintenance Services		7,540.01		7,540.01
440 Rentals		3,782.17		3,782.17
Total Purchased Property Services		\$12,811.71		\$12,811.71
500 Other Purchased Services				
510 Student Transportation Services		1,058.85	3,757.76	4,816.61
580 Travel		2,544.53	1,534.88	4,079.41
599 Other Miscellaneous Purchased Services		4,048.00	700.00	4,748.00
Total Other Purchased Services		\$7,651.38	\$5,992.64	\$13,644.02
600 Supplies				
610 General Supplies		255,223.55	27,579.75	282,803.30
620 Energy		2,211.03		2,211.03
630 Food		26.88		26.88
640 Books and Periodicals		17,812.15		17,812.15
650 Supplies & Fees – Technology Related		25,035.20	18,660.00	43,695.20
Total Supplies		\$300,308.81	\$46,239.75	\$346,548.56
700 Property				
752 Capital Equipment – Original and Additional		102,732.24	12,831.54	115,563.78
Total Property		\$102,732.24	\$12,831.54	\$115,563.78
800 Other Objects				
810 Dues and Fees		3,200.00		3,200.00
Total Other Objects		\$3,200.00		\$3,200.00
Total 1300 Vocational Education		\$1,727,105.94	\$71,051.08	\$1,798,157.02

General Fund (10)

1400 Other Instructional Programs – Elementary / Secondary

Elementary

Secondary

Federal

Total

600 Supplies

610 General Supplies

4,656.98

4,656.98

630 Food

1,879.50

1,879.50

Total Supplies

\$6,536.48

\$6,536.48

Total 1400 Other Instructional Programs – Elementary / Secondary

\$6,536.48

\$6,536.48

LEA : 111312607 Huntingdon County CTC

Printed 11/18/2024 12:47:23 PM

General Fund (10)

1490 Additional Other Instructional Programs

Elementary

Secondary

Federal

Total

600 Supplies

610 General Supplies

4,656.98

4,656.98

630 Food

1,879.50

1,879.50

Total Supplies

\$6,536.48

\$6,536.48

Total 1490 Additional Other Instructional Programs

\$6,536.48

\$6,536.48

General Fund (10)

2000 Support Services

Total

100 Personnel Services – Salaries

100 Personnel Services – Salaries 473,278.19

Total Personnel Services – Salaries \$473,278.19

200 Personnel Services – Employee Benefits

210 Group Insurance – Contracted Provider 87,028.08

220 Social Security Contributions 34,715.90

230 PSERS Retirement Contributions 160,384.59

240 Tuition Reimbursement 32,867.00

250 Unemployment Compensation 4,564.30

260 Workers' Compensation 3,039.60

292 Health Savings Accounts 11,850.00

Total Personnel Services – Employee Benefits \$334,449.47

300 Purchased Professional and Technical Services

310 Official / Administrative Services 2,980.50

322 Professional Educational Services – Ius 53,262.50

329 Professional Educational Services – Other 9,300.00

330 Other Professional Services 40,567.00

340 Technical Services 625.50

350 Security / Safety Services 2,400.98

360 Employee Training and Development Services 7,493.50

390 Other Purchased Professional and Technical Services 2,930.00

Total Purchased Professional and Technical Services \$119,559.98

400 Purchased Property Services

410 Cleaning Services 28,761.53

420 Utility Services 10,338.16

430 Repairs and Maintenance Services 26,185.13

440 Rentals 6,442.82

450 Construction Services 13,955.00

460 Extermination Services 994.35

490 Other Purchased Property Services 425.00

Total Purchased Property Services \$87,101.99

500 Other Purchased Services

510 Student Transportation Services 1,584.50

520 Insurance – General 6,436.00

522 Automotive Liability Insurance 8,275.00

523 General Property and Liability Insurance 35,034.00

529 Other Insurance 8,096.00

530 Communications 18,476.55

549 Other Advertising/Public Relations 870.23

580 Travel 18,330.27

Total Other Purchased Services \$97,102.55

600 Supplies

610 General Supplies 81,515.82

620 Energy 78,347.12

General Fund (10)

2000 Support Services

Total

600 Supplies

630 Food	2,485.96
640 Books and Periodicals	145.00
650 Supplies & Fees – Technology Related	48,213.14

Total Supplies	\$210,707.04
-----------------------	---------------------

700 Property

752 Capital Equipment – Original and Additional	4,213.00
756 Capitalized Technology Equipment – Original	23,293.41

Total Property	\$27,506.41
-----------------------	--------------------

800 Other Objects

810 Dues and Fees	5,396.64
-------------------	----------

Total Other Objects	\$5,396.64
----------------------------	-------------------

Total 2000 Support Services	\$1,355,102.27
------------------------------------	-----------------------

General Fund (10)

2100 Support Services – Students

300 Purchased Professional and Technical Services

	<u>Elementary</u>	<u>Secondary</u>	<u>Federal</u>	<u>Total</u>
310 Official / Administrative Services			2,980.50	2,980.50
322 Professional Educational Services – Ius		53,262.50		53,262.50
Total Purchased Professional and Technical Services		\$53,262.50	\$2,980.50	\$56,243.00

500 Other Purchased Services

510 Student Transportation Services		75.00	1,509.50	1,584.50
Total Other Purchased Services		\$75.00	\$1,509.50	\$1,584.50

600 Supplies

610 General Supplies		59.58	6,456.05	6,515.63
630 Food		56.88		56.88
Total Supplies		\$116.46	\$6,456.05	\$6,572.51
Total 2100 Support Services – Students		\$53,453.96	\$10,946.05	\$64,400.01

General Fund (10)

2120 Guidance Services

Elementary

Secondary

Federal

Total

300 Purchased Professional and Technical Services

310 Official / Administrative Services

2,980.50

2,980.50

Total Purchased Professional and Technical Services

\$2,980.50

\$2,980.50

Total 2120 Guidance Services

\$2,980.50

\$2,980.50

General Fund (10)

2200 Support Services – Instructional Staff

	<u>Elementary</u>	<u>Secondary</u>	<u>Federal</u>	<u>Total</u>
100 Personnel Services – Salaries				
100 Personnel Services – Salaries		3,900.00		3,900.00
Total Personnel Services – Salaries		\$3,900.00		\$3,900.00
200 Personnel Services – Employee Benefits				
220 Social Security Contributions		296.88		296.88
230 PSERS Retirement Contributions		1,326.00		1,326.00
240 Tuition Reimbursement		32,867.00		32,867.00
250 Unemployment Compensation		6.74		6.74
260 Workers' Compensation		25.31		25.31
Total Personnel Services – Employee Benefits		\$34,521.93		\$34,521.93
300 Purchased Professional and Technical Services				
329 Professional Educational Services – Other			9,300.00	9,300.00
360 Employee Training and Development Services		325.00	3,394.50	3,719.50
Total Purchased Professional and Technical Services		\$325.00	\$12,694.50	\$13,019.50
500 Other Purchased Services				
580 Travel		4,015.20	1,967.37	5,982.57
Total Other Purchased Services		\$4,015.20	\$1,967.37	\$5,982.57
600 Supplies				
650 Supplies & Fees – Technology Related		42,352.73		42,352.73
Total Supplies		\$42,352.73		\$42,352.73
700 Property				
756 Capitalized Technology Equipment – Original		6,126.88		6,126.88
Total Property		\$6,126.88		\$6,126.88
800 Other Objects				
810 Dues and Fees		1,997.00		1,997.00
Total Other Objects		\$1,997.00		\$1,997.00
Total 2200 Support Services – Instructional Staff		\$93,238.74	\$14,661.87	\$107,900.61

General Fund (10)

2220 Technology Support Services

	<u>Elementary</u>	<u>Secondary</u>	<u>Federal</u>	<u>Total</u>
600 Supplies				
650 Supplies & Fees – Technology Related		41,823.60		41,823.60
Total Supplies		\$41,823.60		\$41,823.60
700 Property				
756 Capitalized Technology Equipment – Original		6,126.88		6,126.88
Total Property		\$6,126.88		\$6,126.88
Total 2220 Technology Support Services		\$47,950.48		\$47,950.48

General Fund (10)

2260 Instruction and Curriculum Development Services	<u>Elementary</u>	<u>Secondary</u>	<u>Federal</u>	<u>Total</u>
100 Personnel Services – Salaries				
100 Personnel Services – Salaries		3,000.00		3,000.00
Total Personnel Services – Salaries		\$3,000.00		\$3,000.00
200 Personnel Services – Employee Benefits				
220 Social Security Contributions		229.50		229.50
230 PSERS Retirement Contributions		1,020.00		1,020.00
250 Unemployment Compensation		6.74		6.74
260 Workers' Compensation		19.47		19.47
Total Personnel Services – Employee Benefits		\$1,275.71		\$1,275.71
600 Supplies				
650 Supplies & Fees – Technology Related		529.13		529.13
Total Supplies		\$529.13		\$529.13
Total 2260 Instruction and Curriculum Development Services		\$4,804.84		\$4,804.84

General Fund (10)

2270 Instructional Staff Professional Development Services	<u>Elementary</u>	<u>Secondary</u>	<u>Federal</u>	<u>Total</u>
100 Personnel Services – Salaries				
100 Personnel Services – Salaries		900.00		900.00
Total Personnel Services – Salaries		\$900.00		\$900.00
200 Personnel Services – Employee Benefits				
220 Social Security Contributions		67.38		67.38
230 PSERS Retirement Contributions		306.00		306.00
240 Tuition Reimbursement		32,867.00		32,867.00
260 Workers' Compensation		5.84		5.84
Total Personnel Services – Employee Benefits		\$33,246.22		\$33,246.22
300 Purchased Professional and Technical Services				
329 Professional Educational Services – Other			9,300.00	9,300.00
360 Employee Training and Development Services		325.00	3,394.50	3,719.50
Total Purchased Professional and Technical Services		\$325.00	\$12,694.50	\$13,019.50
500 Other Purchased Services				
580 Travel		4,015.20	1,967.37	5,982.57
Total Other Purchased Services		\$4,015.20	\$1,967.37	\$5,982.57
800 Other Objects				
810 Dues and Fees		1,997.00		1,997.00
Total Other Objects		\$1,997.00		\$1,997.00
Total 2270 Instructional Staff Professional Development Services		\$40,483.42	\$14,661.87	\$55,145.29

General Fund (10)

	<u>Elementary</u>	<u>Secondary</u>	<u>Federal</u>	<u>Total</u>
2300 Support Services – Administration				
100 Personnel Services – Salaries				
100 Personnel Services – Salaries		81,160.00		220,747.50
Total Personnel Services – Salaries		\$81,160.00		\$220,747.50
200 Personnel Services – Employee Benefits				
210 Group Insurance – Contracted Provider		17,531.64		37,578.24
220 Social Security Contributions		6,208.74		16,122.21
230 PSERS Retirement Contributions		29,742.00		76,210.65
250 Unemployment Compensation		187.55		492.68
260 Workers' Compensation		541.51		1,416.65
292 Health Savings Accounts		2,100.00		5,250.00
Total Personnel Services – Employee Benefits		\$56,311.44		\$137,070.43
300 Purchased Professional and Technical Services				
330 Other Professional Services				38,281.00
Total Purchased Professional and Technical Services				\$38,281.00
400 Purchased Property Services				
410 Cleaning Services				1,327.00
440 Rentals				3,720.70
Total Purchased Property Services				\$5,047.70
500 Other Purchased Services				
520 Insurance – General				5,992.00
549 Other Advertising/Public Relations				870.23
580 Travel				(519.70)
Total Other Purchased Services				\$6,342.53
600 Supplies				
610 General Supplies		4,654.14		15,796.42
630 Food				2,429.08
640 Books and Periodicals				145.00
650 Supplies & Fees – Technology Related		23.98		751.92
Total Supplies		\$4,678.12		\$19,122.42
800 Other Objects				
810 Dues and Fees				3,315.00
Total Other Objects				\$3,315.00
Total 2300 Support Services – Administration		\$142,149.56		\$429,926.58

General Fund (10)

2310 Board Services

Elementary

Secondary

Federal

Total

100 Personnel Services – Salaries

100 Personnel Services – Salaries

550.00

Total Personnel Services – Salaries

\$550.00

200 Personnel Services – Employee Benefits

220 Social Security Contributions

41.54

230 PSERS Retirement Contributions

187.00

250 Unemployment Compensation

3.26

260 Workers' Compensation

3.57

Total Personnel Services – Employee Benefits

\$235.37

500 Other Purchased Services

520 Insurance – General

5,992.00

549 Other Advertising/Public Relations

870.23

Total Other Purchased Services

\$6,862.23

600 Supplies

610 General Supplies

308.59

Total Supplies

\$308.59

Total 2310 Board Services

\$7,956.19

General Fund (10)

2350 Legal and Accounting Services

Elementary

Secondary

Federal

Total

300 Purchased Professional and Technical Services

330 Other Professional Services

38,281.00

Total Purchased Professional and Technical Services

\$38,281.00

Total 2350 Legal and Accounting Services

\$38,281.00

General Fund (10)

2360 Office of the Superintendent / Executive Director Services

Elementary Secondary Federal Total

100	<u>Personnel Services – Salaries</u>			
	100 Personnel Services – Salaries			139,037.50
Total Personnel Services – Salaries				\$139,037.50
200	<u>Personnel Services – Employee Benefits</u>			
	210 Group Insurance – Contracted Provider			20,046.60
	220 Social Security Contributions			9,871.93
	230 PSERS Retirement Contributions			46,281.65
	250 Unemployment Compensation			301.87
	260 Workers' Compensation			871.57
	292 Health Savings Accounts			3,150.00
Total Personnel Services – Employee Benefits				\$80,523.62
400	<u>Purchased Property Services</u>			
	440 Rentals			3,720.70
Total Purchased Property Services				\$3,720.70
500	<u>Other Purchased Services</u>			
	580 Travel			(519.70)
Total Other Purchased Services				(\$519.70)
600	<u>Supplies</u>			
	610 General Supplies			8,378.45
	630 Food			2,429.08
	640 Books and Periodicals			145.00
	650 Supplies & Fees – Technology Related			727.94
Total Supplies				\$11,680.47
800	<u>Other Objects</u>			
	810 Dues and Fees			3,315.00
Total Other Objects				\$3,315.00
Total 2360 Office of the Superintendent / Executive Director Services				\$237,757.59

General Fund (10)

	<u>Elementary</u>	<u>Secondary</u>	<u>Federal</u>	<u>Total</u>
2380 Office of the Principal Services				
100 Personnel Services – Salaries				
100 Personnel Services – Salaries		81,160.00		81,160.00
Total Personnel Services – Salaries		\$81,160.00		\$81,160.00
200 Personnel Services – Employee Benefits				
210 Group Insurance – Contracted Provider		17,531.64		17,531.64
220 Social Security Contributions		6,208.74		6,208.74
230 PSERS Retirement Contributions		29,742.00		29,742.00
250 Unemployment Compensation		187.55		187.55
260 Workers' Compensation		541.51		541.51
292 Health Savings Accounts		2,100.00		2,100.00
Total Personnel Services – Employee Benefits		\$56,311.44		\$56,311.44
600 Supplies				
610 General Supplies		4,654.14		4,654.14
650 Supplies & Fees – Technology Related		23.98		23.98
Total Supplies		\$4,678.12		\$4,678.12
Total 2380 Office of the Principal Services		\$142,149.56		\$142,149.56

General Fund (10)

	<u>Elementary</u>	<u>Secondary</u>	<u>Federal</u>	<u>Total</u>
2390 Other Administration Services				
400 <u>Purchased Property Services</u>				
410 Cleaning Services				1,327.00
Total Purchased Property Services				\$1,327.00
600 <u>Supplies</u>				
610 General Supplies				2,455.24
Total Supplies				\$2,455.24
Total 2390 Other Administration Services				\$3,782.24

General Fund (10)

	<u>Elementary</u>	<u>Secondary</u>	<u>Federal</u>	<u>Total</u>
2400 Support Services – Pupil Health				
300 <u>Purchased Professional and Technical Services</u>				
330 Other Professional Services				786.00
Total Purchased Professional and Technical Services				\$786.00
600 <u>Supplies</u>				
610 General Supplies				4,444.92
Total Supplies				\$4,444.92
Total 2400 Support Services – Pupil Health				\$5,230.92

General Fund (10)

	<u>Elementary</u>	<u>Secondary</u>	<u>Federal</u>	<u>Total</u>
2410 Supervision of Health Services				
300 <u>Purchased Professional and Technical Services</u>				
330 Other Professional Services				786.00
Total Purchased Professional and Technical Services				\$786.00
600 <u>Supplies</u>				
610 General Supplies				4,444.92
Total Supplies				\$4,444.92
Total 2410 Supervision of Health Services				\$5,230.92

General Fund (10)

	<u>Elementary</u>	<u>Secondary</u>	<u>Federal</u>	<u>Total</u>
2419 Supervision of Health Services – All Other Supervision				
300 <u>Purchased Professional and Technical Services</u>				
330 Other Professional Services				786.00
Total Purchased Professional and Technical Services				\$786.00
600 <u>Supplies</u>				
610 General Supplies				4,444.92
Total Supplies				\$4,444.92
Total 2419 Supervision of Health Services – All Other Supervision				\$5,230.92

General Fund (10)

	<u>Elementary</u>	<u>Secondary</u>	<u>Federal</u>	<u>Total</u>
2500 Support Services – Business				
100 Personnel Services – Salaries				
100 Personnel Services – Salaries				104,310.00
Total Personnel Services – Salaries				\$104,310.00
200 Personnel Services – Employee Benefits				
210 Group Insurance – Contracted Provider				20,522.28
220 Social Security Contributions				7,659.32
230 PSERS Retirement Contributions				34,760.15
250 Unemployment Compensation				228.89
260 Workers' Compensation				660.85
292 Health Savings Accounts				2,100.00
Total Personnel Services – Employee Benefits				\$65,931.49
300 Purchased Professional and Technical Services				
330 Other Professional Services				1,500.00
340 Technical Services				625.50
390 Other Purchased Professional and Technical Services				230.00
Total Purchased Professional and Technical Services				\$2,355.50
400 Purchased Property Services				
440 Rentals				2,076.42
Total Purchased Property Services				\$2,076.42
500 Other Purchased Services				
520 Insurance – General				444.00
530 Communications				4,609.56
580 Travel				327.36
Total Other Purchased Services				\$5,380.92
600 Supplies				
610 General Supplies				1,022.91
650 Supplies & Fees – Technology Related				598.50
Total Supplies				\$1,621.41
800 Other Objects				
810 Dues and Fees				34.64
Total Other Objects				\$34.64
Total 2500 Support Services – Business				\$181,710.38

General Fund (10)

2590 Other Support Services – Business

Elementary Secondary Federal Total

100	<u>Personnel Services – Salaries</u>				
	100 Personnel Services – Salaries				104,310.00
Total Personnel Services – Salaries					\$104,310.00
200	<u>Personnel Services – Employee Benefits</u>				
	210 Group Insurance – Contracted Provider				20,522.28
	220 Social Security Contributions				7,659.32
	230 PSERS Retirement Contributions				34,760.15
	250 Unemployment Compensation				228.89
	260 Workers' Compensation				660.85
	292 Health Savings Accounts				2,100.00
Total Personnel Services – Employee Benefits					\$65,931.49
300	<u>Purchased Professional and Technical Services</u>				
	330 Other Professional Services				1,500.00
	340 Technical Services				625.50
	390 Other Purchased Professional and Technical Services				230.00
Total Purchased Professional and Technical Services					\$2,355.50
400	<u>Purchased Property Services</u>				
	440 Rentals				2,076.42
Total Purchased Property Services					\$2,076.42
500	<u>Other Purchased Services</u>				
	520 Insurance – General				444.00
	530 Communications				4,609.56
	580 Travel				327.36
Total Other Purchased Services					\$5,380.92
600	<u>Supplies</u>				
	610 General Supplies				1,022.91
	650 Supplies & Fees – Technology Related				598.50
Total Supplies					\$1,621.41
800	<u>Other Objects</u>				
	810 Dues and Fees				34.64
Total Other Objects					\$34.64
Total 2590 Other Support Services – Business					\$181,710.38

General Fund (10)

	<u>Elementary</u>	<u>Secondary</u>	<u>Federal</u>	<u>Total</u>
2600 Operation and Maintenance of Plant Services				
100 Personnel Services – Salaries				
100 Personnel Services – Salaries				139,902.25
Total Personnel Services – Salaries				\$139,902.25
200 Personnel Services – Employee Benefits				
210 Group Insurance – Contracted Provider				28,927.56
220 Social Security Contributions				10,306.52
230 PSERS Retirement Contributions				46,585.52
250 Unemployment Compensation				3,826.06
260 Workers' Compensation				908.11
292 Health Savings Accounts				4,500.00
Total Personnel Services – Employee Benefits				\$95,053.77
300 Purchased Professional and Technical Services				
350 Security / Safety Services				2,400.98
390 Other Purchased Professional and Technical Services				2,700.00
Total Purchased Professional and Technical Services				\$5,100.98
400 Purchased Property Services				
410 Cleaning Services				27,434.53
420 Utility Services				10,338.16
430 Repairs and Maintenance Services				26,185.13
440 Rentals				645.70
450 Construction Services				13,955.00
460 Extermination Services				994.35
490 Other Purchased Property Services				425.00
Total Purchased Property Services				\$79,977.87
500 Other Purchased Services				
522 Automotive Liability Insurance				8,275.00
523 General Property and Liability Insurance				35,034.00
529 Other Insurance				8,096.00
530 Communications				13,866.99
580 Travel				5,099.86
Total Other Purchased Services				\$70,371.85
600 Supplies				
610 General Supplies		53,735.94		53,735.94
620 Energy				78,347.12
650 Supplies & Fees – Technology Related				4,509.99
Total Supplies		\$53,735.94		\$136,593.05
700 Property				
752 Capital Equipment – Original and Additional				4,213.00
756 Capitalized Technology Equipment – Original				17,166.53
Total Property				\$21,379.53
800 Other Objects				

General Fund (10)

2600 Operation and Maintenance of Plant Services

Elementary

Secondary

Federal

Total

800 Other Objects

810 Dues and Fees

50.00

Total Other Objects

\$50.00

Total 2600 Operation and Maintenance of Plant Services

\$53,735.94

\$548,429.30

General Fund (10)

	<u>Elementary</u>	<u>Secondary</u>	<u>Federal</u>	<u>Total</u>
2660 Safety and Security Services				
400 <u>Purchased Property Services</u>				
430 Repairs and Maintenance Services				5,051.64
Total Purchased Property Services				\$5,051.64
500 <u>Other Purchased Services</u>				
580 Travel				5,099.86
Total Other Purchased Services				\$5,099.86
600 <u>Supplies</u>				
610 General Supplies		14,042.76		14,042.76
650 Supplies & Fees – Technology Related				4,509.99
Total Supplies		\$14,042.76		\$18,552.75
700 <u>Property</u>				
752 Capital Equipment – Original and Additional				4,213.00
756 Capitalized Technology Equipment – Original				17,166.53
Total Property				\$21,379.53
Total 2660 Safety and Security Services		\$14,042.76		\$50,083.78

General Fund (10)

	<u>Elementary</u>	<u>Secondary</u>	<u>Federal</u>	<u>Total</u>
2690 Other Operation and Maintenance of Plant Services				
100 Personnel Services – Salaries				
100 Personnel Services – Salaries				139,902.25
Total Personnel Services – Salaries				\$139,902.25
200 Personnel Services – Employee Benefits				
210 Group Insurance – Contracted Provider				28,927.56
220 Social Security Contributions				10,306.52
230 PSERS Retirement Contributions				46,585.52
250 Unemployment Compensation				3,826.06
260 Workers' Compensation				908.11
292 Health Savings Accounts				4,500.00
Total Personnel Services – Employee Benefits				\$95,053.77
300 Purchased Professional and Technical Services				
350 Security / Safety Services				2,400.98
390 Other Purchased Professional and Technical Services				2,700.00
Total Purchased Professional and Technical Services				\$5,100.98
400 Purchased Property Services				
410 Cleaning Services				27,434.53
420 Utility Services				10,338.16
430 Repairs and Maintenance Services				21,133.49
440 Rentals				645.70
450 Construction Services				13,955.00
460 Extermination Services				994.35
490 Other Purchased Property Services				425.00
Total Purchased Property Services				\$74,926.23
500 Other Purchased Services				
522 Automotive Liability Insurance				8,275.00
523 General Property and Liability Insurance				35,034.00
529 Other Insurance				8,096.00
530 Communications				13,866.99
Total Other Purchased Services				\$65,271.99
600 Supplies				
610 General Supplies		39,693.18		39,693.18
620 Energy				78,347.12
Total Supplies		\$39,693.18		\$118,040.30
800 Other Objects				
810 Dues and Fees				50.00
Total Other Objects				\$50.00
Total 2690 Other Operation and Maintenance of Plant Services		\$39,693.18		\$498,345.52

General Fund (10)

	<u>Elementary</u>	<u>Secondary</u>	<u>Federal</u>	<u>Total</u>
2800 Support Services – Central				
100 Personnel Services – Salaries				
100 Personnel Services – Salaries				4,418.44
Total Personnel Services – Salaries				\$4,418.44
200 Personnel Services – Employee Benefits				
220 Social Security Contributions				330.97
230 PSERS Retirement Contributions				1,502.27
250 Unemployment Compensation				9.93
260 Workers' Compensation				28.68
Total Personnel Services – Employee Benefits				\$1,871.85
300 Purchased Professional and Technical Services				
360 Employee Training and Development Services			440.00	3,774.00
Total Purchased Professional and Technical Services			\$440.00	\$3,774.00
500 Other Purchased Services				
580 Travel				7,440.18
Total Other Purchased Services				\$7,440.18
Total 2800 Support Services – Central			\$440.00	\$17,504.47

General Fund (10)

2810 Planning, Research, Development and Evaluation Services

Elementary

Secondary

Federal

Total

100 Personnel Services – Salaries

100 Personnel Services – Salaries

4,418.44

Total Personnel Services – Salaries

\$4,418.44

200 Personnel Services – Employee Benefits

220 Social Security Contributions

330.97

230 PSERS Retirement Contributions

1,502.27

250 Unemployment Compensation

9.93

260 Workers' Compensation

28.68

Total Personnel Services – Employee Benefits

\$1,871.85

Total 2810 Planning, Research, Development and Evaluation Services

\$6,290.29

General Fund (10)

2830 Staff Services

Elementary

Secondary

Federal

Total

300 Purchased Professional and Technical Services

360 Employee Training and Development Services

440.00

3,774.00

Total Purchased Professional and Technical Services

\$440.00

\$3,774.00

500 Other Purchased Services

580 Travel

7,440.18

Total Other Purchased Services

\$7,440.18

Total 2830 Staff Services

\$440.00

\$11,214.18

General Fund (10)

	<u>Elementary</u>	<u>Secondary</u>	<u>Federal</u>	<u>Total</u>
2834 Staff Development Services – Non-Instructional, Certified Staff Only				
300 <u>Purchased Professional and Technical Services</u>				
360 Employee Training and Development Services			440.00	3,774.00
Total Purchased Professional and Technical Services			\$440.00	\$3,774.00
500 <u>Other Purchased Services</u>				
580 Travel				7,440.18
Total Other Purchased Services				\$7,440.18
Total 2834 Staff Development Services – Non-Instructional, Certified Staff Only			\$440.00	\$11,214.18

General Fund (10)

3000 Operation of Non-Instructional Services

Total

100 Personnel Services – Salaries

100 Personnel Services – Salaries 13,411.26

Total Personnel Services – Salaries \$13,411.26

200 Personnel Services – Employee Benefits

220 Social Security Contributions 999.80

230 PSERS Retirement Contributions 3,742.13

250 Unemployment Compensation 30.15

260 Workers' Compensation 87.05

Total Personnel Services – Employee Benefits \$4,859.13

300 Purchased Professional and Technical Services

390 Other Purchased Professional and Technical Services 180.00

Total Purchased Professional and Technical Services \$180.00

500 Other Purchased Services

580 Travel 6,134.52

Total Other Purchased Services \$6,134.52

800 Other Objects

810 Dues and Fees 250.00

Total Other Objects \$250.00

Total 3000 Operation of Non-Instructional Services \$24,834.91

General Fund (10)

	<u>Elementary</u>	<u>Secondary</u>	<u>Federal</u>	<u>Total</u>
3200 Student Activities				
100 Personnel Services – Salaries				
100 Personnel Services – Salaries				13,411.26
Total Personnel Services – Salaries				\$13,411.26
200 Personnel Services – Employee Benefits				
220 Social Security Contributions				999.80
230 PSERS Retirement Contributions				3,742.13
250 Unemployment Compensation				30.15
260 Workers' Compensation				87.05
Total Personnel Services – Employee Benefits				\$4,859.13
300 Purchased Professional and Technical Services				
390 Other Purchased Professional and Technical Services				180.00
Total Purchased Professional and Technical Services				\$180.00
500 Other Purchased Services				
580 Travel				6,134.52
Total Other Purchased Services				\$6,134.52
800 Other Objects				
810 Dues and Fees				250.00
Total Other Objects				\$250.00
Total 3200 Student Activities				\$24,834.91

General Fund (10)

4000 Facilities Acquisition, Construction and Improvement Services

Total

300 Purchased Professional and Technical Services

330 Other Professional Services

3,763.00

Total Purchased Professional and Technical Services

\$3,763.00

Total 4000 Facilities Acquisition, Construction and Improvement Services

\$3,763.00

General Fund (10)

	<u>Elementary</u>	<u>Secondary</u>	<u>Federal</u>	<u>Total</u>
4200 Existing Site Improvement Services				
300 <u>Purchased Professional and Technical Services</u>				
330 Other Professional Services			3,763.00	3,763.00
Total Purchased Professional and Technical Services			\$3,763.00	\$3,763.00
Total 4200 Existing Site Improvement Services			\$3,763.00	\$3,763.00

General Fund (10)

5000 Other Expenditures and Financing Uses

Total

800 Other Objects

830 Interest 49,354.34

Total Other Objects \$49,354.34

900 Other Uses of Funds

910 Redemption of Principal 35,917.66

931 Capital Reserve Fund Transfers Applicable To Fund 31 142,981.70

Total Other Uses of Funds \$178,899.36

Total 5000 Other Expenditures and Financing Uses \$228,253.70

General Fund (10)

	<u>Elementary</u>	<u>Secondary</u>	<u>Federal</u>	<u>Total</u>
5100 Debt Service / Other Expenditures and Financing Uses				
800 Other Objects				
830 Interest				49,354.34
Total Other Objects				\$49,354.34
900 Other Uses of Funds				
910 Redemption of Principal				35,917.66
Total Other Uses of Funds				\$35,917.66
Total 5100 Debt Service / Other Expenditures and Financing Uses				\$85,272.00

General Fund (10)

	<u>Elementary</u>	<u>Secondary</u>	<u>Federal</u>	<u>Total</u>
5110 Debt Service				
800 Other Objects				
830 Interest				49,354.34
Total Other Objects				\$49,354.34
900 Other Uses of Funds				
910 Redemption of Principal				35,917.66
Total Other Uses of Funds				\$35,917.66
Total 5110 Debt Service				\$85,272.00

General Fund (10)

5200 Interfund Transfers – Out

Elementary

Secondary

Federal

Total

900 Other Uses of Funds

931 Capital Reserve Fund Transfers Applicable To Fund 31

142,981.70

Total Other Uses of Funds

\$142,981.70

Total 5200 Interfund Transfers – Out

\$142,981.70

General Fund (10)

5230 Capital Projects Fund Transfers

Elementary

Secondary

Federal

Total

900 Other Uses of Funds

931 Capital Reserve Fund Transfers Applicable To Fund 31

142,981.70

Total Other Uses of Funds

\$142,981.70

Total 5230 Capital Projects Fund Transfers

\$142,981.70

Capital Reserve Fund - § 690, §1850 (31)

4000 Facilities Acquisition, Construction and Improvement Services

Total

700 Property

762 Capitalized Equipment - Replacement

61,292.22

Total Property

\$61,292.22

Total 4000 Facilities Acquisition, Construction and Improvement Services

\$61,292.22

LEA : 111312607 Huntingdon County CTC

Printed 11/18/2024 12:47:38 PM

Capital Reserve Fund - \$ 690, \$1850 (31)

4600 Existing Building Improvement Services

Elementary

Secondary

Federal

Total

700 Property

762 Capitalized Equipment - Replacement

61,292.22

Total Property

\$61,292.22

Total 4600 Existing Building Improvement Services

\$61,292.22

	<u>General Fund(10)</u>	<u>Student Sponsored Activity Fund(21)</u>	<u>Public Purpose Trust(27)</u>	<u>Other Compt Approved (28)</u>	<u>Athletic / Activity(29)</u>
1000 Instruction					
1300 Vocational Education	1,798,157.02				
1400 Other Instructional Programs - Elementary / Secondary	6,536.48				
Total Instruction	\$1,804,693.50				
2000 Support Services					
2100 Support Services - Students	64,400.01				
2200 Support Services - Instructional Staff	107,900.61				
2300 Support Services - Administration	429,926.58				
2400 Support Services - Pupil Health	5,230.92				
2500 Support Services - Business	181,710.38				
2600 Operation and Maintenance of Plant Services	548,429.30				
2800 Support Services - Central	17,504.47				
Total Support Services	\$1,355,102.27				
3000 Operation of Non-Instructional Services					
3200 Student Activities	24,834.91				
Total Operation of Non-Instructional Services	\$24,834.91				
4000 Facilities Acquisition, Construction and Improvement Services					
4200 Existing Site Improvement Services	3,763.00				
4600 Existing Building Improvement Services					
Total Facilities Acquisition, Construction and Improvement Services	\$3,763.00				
5000 Other Expenditures and Financing Uses					
5100 Debt Service / Other Expenditures and Financing Uses	85,272.00				
5200 Interfund Transfers - Out	142,981.70				
Total Other Expenditures and Financing Uses	\$228,253.70				
TOTAL ACTUAL EXPENDITURES & OTHER FINANCING USES	\$3,416,647.38				

	<u>Capital Reserve (690. 1850)(31)</u>	<u>Other Capital Projects Fund(39)</u>	<u>Debt Service(40)</u>	<u>Permanent(90)</u>	<u>Total</u>
1000 Instruction					
1300 Vocational Education					1,798,157.02
1400 Other Instructional Programs - Elementary / Secondary					6,536.48
Total Instruction					\$1,804,693.50
2000 Support Services					
2100 Support Services - Students					64,400.01
2200 Support Services - Instructional Staff					107,900.61
2300 Support Services - Administration					429,926.58
2400 Support Services - Pupil Health					5,230.92
2500 Support Services - Business					181,710.38
2600 Operation and Maintenance of Plant Services					548,429.30
2800 Support Services - Central					17,504.47
Total Support Services					\$1,355,102.27
3000 Operation of Non-Instructional Services					
3200 Student Activities					24,834.91
Total Operation of Non-Instructional Services					\$24,834.91
4000 Facilities Acquisition, Construction and Improvement Services					
4200 Existing Site Improvement Services					3,763.00
4600 Existing Building Improvement Services		61,292.22			61,292.22
Total Facilities Acquisition, Construction and Improvement Services		\$61,292.22			\$65,055.22
5000 Other Expenditures and Financing Uses					
5100 Debt Service / Other Expenditures and Financing Uses					85,272.00
5200 Interfund Transfers - Out					142,981.70
Total Other Expenditures and Financing Uses					\$228,253.70
TOTAL ACTUAL EXPENDITURES & OTHER FINANCING USES		\$61,292.22			\$3,477,939.60

1 .	<u>Current Special Education Expenditures within Function 1000</u> See list of exclusions in the note below.	
2 .	<u>Current Special Education Expenditures within Function 2000</u> See list of exclusions in the note below.	4,804.84
2A.	<u>Current Special Education Expenditures within Sub-Function 2100</u> This data should also be included in line 2 above. See list of exclusions in the note below.	
2B.	<u>Current Special Education Expenditures within Sub-Function 2200</u> This data should also be included in line 2 above. See list of exclusions in the note below.	4,804.84
2C.	<u>Current Special Education Expenditures within Sub-Function 2700</u> This data should also be included in line 2 above. See list of exclusions in the note below.	
3.	<u>Current Special Education Expenditures within Sub-Function 3100</u> See list of exclusions in the note below.	
4.	<u>Current Special Education Expenditures within Sub-Function 3200</u> See list of exclusions in the note below.	

Note: The Current Special Education Expenditure amounts for each line should be calculated as follows:

- * Include the total expenditures for special education costs from all governmental funds and the food service fund 51 for the function/sub-function requested
- * Exclude data from sub-functions: 1243,1450,1500,1600,1807,2280,2450,2750,2990
- * Exclude data from objects: 322,511,512,516,561,562,564,566,592,593,594,595,596,597,700,830,899

Benefits for Staff Relative to Collective Bargaining Agreements

	OBJECT	COVERED	NOT COVERED	TOTAL
10 General Fund	No Self Insurance data to report			
	211 Medical Insurance	231,548.14	74,020.84	305,568.98
	212 Dental Insurance	3,454.26	1,522.80	4,977.06
	215 Eye Care Insurance	824.00	240.00	1,064.00
	216 Prescription Insurance			
	271 Self-Insurance Medical Benefits			
	272 Self-Insurance Dental Benefits			
	275 Self-Insurance Eye Care Benefits			
	276 Self-Insurance Prescription Benefits			
	FUND TOTAL		\$235,826.40	\$75,783.64
50 Enterprise Fund	No Self Insurance data to report			
	211 Medical Insurance			
	212 Dental Insurance			
	215 Eye Care Insurance			
	216 Prescription Insurance			
	271 Self-Insurance Medical Benefits			
	272 Self-Insurance Dental Benefits			
	275 Self-Insurance Eye Care Benefits			
	276 Self-Insurance Prescription Benefits			
	FUND TOTAL			
60 Internal Service Fund	No Self Insurance data to report			
	211 Medical Insurance			
	212 Dental Insurance			
	215 Eye Care Insurance			
	216 Prescription Insurance			
	271 Self-Insurance Medical Benefits			
	272 Self-Insurance Dental Benefits			
	275 Self-Insurance Eye Care Benefits			
	276 Self-Insurance Prescription Benefits			
	FUND TOTAL			
Total of All Funds		\$235,826.40	\$75,783.64	\$311,610.04

(PRINCIPAL AMOUNTS ONLY)

GOVERNMENTAL FUNDS/ ACTIVITIES

	Short-Term Borrowing	General Obligation Bonds/Notes	Authority Building Obligations	Leases, Other Right to Use Arrangements	Extended Term Financing Agreements	Other Long Term Debt/Liabilities	OPEB, Comp Abs, Net Pension Liab	Total
1. Debt at Beginning of Fiscal Year					2,094,469.74		3,196,287.71	5,290,757.45
2. Additional Debt Incurred During Year							14,736.41	14,736.41
3. Retirements and Repayments					35,917.66		55,196.00	91,113.66
4. Debt at End of Fiscal Year					2,058,552.08		3,155,828.12	5,214,380.20
5. Accreted Interest at End Of Fiscal Year								
6. Total Debt and Accreted Interest					2,058,552.08		3,155,828.12	5,214,380.20
7. Current Portion P&I - Due within 1 year					85,272.00			85,272.00
8. Interest Paid during current fiscal year					49,354.34			49,354.34

(PRINCIPAL AMOUNTS ONLY)

PROPRIETARY FUNDS

	Short-Term Borrowing	General Obligation Bonds/Notes	Authority Building Obligations	Leases, Other Right to Use Arrangements	Extended Term Financing Agreements	Other Long Term Debt/Liabilities	OPEB, Comp Abs, Net Pension Liab	Total
1. Debt at Beginning of Fiscal Year							228,090.85	228,090.85
2. Additional Debt Incurred During Year							28,868.00	28,868.00
3. Retirements and Repayments							5,318.86	5,318.86
4. Debt at End of Fiscal Year							251,639.99	251,639.99
5. Accreted Interest at End Of Fiscal Year								
6. Total Debt and Accreted Interest							251,639.99	251,639.99
7. Current Portion P&I - Due within 1 year								
8. Interest Paid during current fiscal year								

Total Principal and Interest Payments Made by Your School - All Funds

Function	Fund		Principal (910)	Principal (920)	Interest (830)	Total (Principal +Interest)	Misc Other Uses (990)
5110	10	General Fund	35,917.66		49,354.34	85,272.00	
5110	20	Special Revenue Funds					
5110	30	Capital Projects Funds					
5110	40	Debt Service Fund					
5110	90	Permanent Fund					
5120	10	General Fund					
5120	20	Special Revenue Funds					
5120	30	Capital Projects Funds					
5120	40	Debt Service Fund					
5140	10	General Fund					
5140	20	Special Revenue Funds					
5140	30	Capital Projects Funds					
5140	40	Debt Service Fund					
5140	90	Permanent Fund					
Total Debt Payments - Governmental Funds			\$35,917.66		\$49,354.34	\$85,272.00	

Function	Fund		Principal (910)	Principal (920)	Interest (830)	Total (Principal +Interest)
5110	50	Enterprise Fund				
5110	60	Internal Service Fund				
5120	50	Enterprise Fund				
5120	60	Internal Service Fund				
5140	50	Enterprise Fund				
5140	60	Internal Service Fund				
Total Debt Payments - Proprietary Funds						

Debt Details
Governmental Funds/ Activities

Debt Category	Debt Issue Date (MM/YYYY)	Principal Amounts Only			Debt at End of Fiscal Year	Current Portion Due Within One Year (Principal and Interest)	Interest Paid During Fiscal Year
		Debt at Beginning of Fiscal Year	Additions	Reductions / Repayments			
Extended Term Financing Agreements		2,094,469.74		35,917.66	2,058,552.08	85,272.00	49,354.34
Compensated Absences		90,951.71	14,736.41		105,688.12		
Net Pension Liability		2,908,035.00		18,644.00	2,889,391.00		
Other Post-Employment Benefits (OPEB)		197,301.00		36,552.00	160,749.00		
Totals for Debt Entered:		\$5,290,757.45	\$14,736.41	\$91,113.66	\$5,214,380.20	\$85,272.00	\$49,354.34

Bond Details
Proprietary Funds

Debt Category	Debt Issue Date (MM/YYYY)	Principal Amounts Only			Debt at End of Fiscal Year	Current Portion Due Within One Year (Principal and Interest)	Interest Paid During Fiscal Year
		Debt at Beginning of Fiscal Year	Additions	Reductions / Repayments			
Compensated Absences		19,009.85		4,533.86	14,475.99		
Other Post-Employment Benefits (OPEB)		13,284.00		785.00	12,499.00		
Net Pension Liability		195,797.00	28,868.00		224,665.00		
Totals for Debt Entered:		\$228,090.85	\$28,868.00	\$5,318.86	\$251,639.99		

Other Enterprise Funds (58)

	<u>Total</u>
1000 Instruction	
100 Personnel Services – Salaries	
100 Personnel Services – Salaries	97,213.15
Total Personnel Services – Salaries	\$97,213.15
200 Personnel Services – Employee Benefits	
210 Group Insurance – Contracted Provider	6,422.16
220 Social Security Contributions	7,044.14
230 PSERS Retirement Contributions	25,087.03
240 Tuition Reimbursement	29,694.00
250 Unemployment Compensation	297.05
260 Workers' Compensation	619.61
280 Other Post-Employment Benefits (OPEB)	19,305.00
291 Other Retirement Plans	(713.24)
Total Personnel Services – Employee Benefits	\$87,755.75
400 Purchased Property Services	
420 Utility Services	1,244.50
430 Repairs and Maintenance Services	13,670.10
Total Purchased Property Services	\$14,914.60
500 Other Purchased Services	
530 Communications	2,730.28
549 Other Advertising/Public Relations	5,139.19
580 Travel	1,322.50
Total Other Purchased Services	\$9,191.97
600 Supplies	
610 General Supplies	6,938.10
620 Energy	12,051.00
630 Food	92.95
640 Books and Periodicals	2,257.79
650 Supplies & Fees – Technology Related	9,182.67
Total Supplies	\$30,522.51
700 Property	
740 Depreciation	10,695.55
Total Property	\$10,695.55
800 Other Objects	
810 Dues and Fees	5,425.12
890 Miscellaneous Expenditures	13,941.50
Total Other Objects	\$19,366.62
Total 1000 Instruction	\$269,660.15

Other Enterprise Funds (58)

1600 Adult Education Programs

Elementary Secondary Federal Total

100	<u>Personnel Services – Salaries</u>				
	100 Personnel Services – Salaries				97,213.15
Total Personnel Services – Salaries					\$97,213.15
200	<u>Personnel Services – Employee Benefits</u>				
	210 Group Insurance – Contracted Provider				6,422.16
	220 Social Security Contributions				7,044.14
	230 PSERS Retirement Contributions				25,087.03
	240 Tuition Reimbursement				29,694.00
	250 Unemployment Compensation				297.05
	260 Workers' Compensation				619.61
	280 Other Post-Employment Benefits (OPEB)				19,305.00
	291 Other Retirement Plans				(713.24)
Total Personnel Services – Employee Benefits					\$87,755.75
400	<u>Purchased Property Services</u>				
	420 Utility Services				1,244.50
	430 Repairs and Maintenance Services				13,670.10
Total Purchased Property Services					\$14,914.60
500	<u>Other Purchased Services</u>				
	530 Communications				2,730.28
	549 Other Advertising/Public Relations				5,139.19
	580 Travel				1,322.50
Total Other Purchased Services					\$9,191.97
600	<u>Supplies</u>				
	610 General Supplies				6,938.10
	620 Energy				12,051.00
	630 Food				92.95
	640 Books and Periodicals				2,257.79
	650 Supplies & Fees – Technology Related				9,182.67
Total Supplies					\$30,522.51
700	<u>Property</u>				
	740 Depreciation				10,695.55
Total Property					\$10,695.55
800	<u>Other Objects</u>				
	810 Dues and Fees				5,425.12
	890 Miscellaneous Expenditures				13,941.50
Total Other Objects					\$19,366.62
Total 1600 Adult Education Programs					\$269,660.15

Other Enterprise Funds (58)

2000 Support Services

100 Personnel Services – Salaries

100 Personnel Services – Salaries 1,156.50

Total Personnel Services – Salaries \$1,156.50

200 Personnel Services – Employee Benefits

220 Social Security Contributions 80.44

230 PSERS Retirement Contributions 344.25

250 Unemployment Compensation 2.60

260 Workers' Compensation 7.51

Total Personnel Services – Employee Benefits \$434.80

300 Purchased Professional and Technical Services

360 Employee Training and Development Services 210.00

Total Purchased Professional and Technical Services \$210.00

600 Supplies

650 Supplies & Fees – Technology Related 2,411.56

Total Supplies \$2,411.56

Total 2000 Support Services \$4,212.86

Other Enterprise Funds (58)

2200 Support Services – Instructional Staff

Elementary

Secondary

Federal

Total

300 Purchased Professional and Technical Services

360 Employee Training and Development Services

210.00

Total Purchased Professional and Technical Services

\$210.00

600 Supplies

650 Supplies & Fees – Technology Related

2,411.56

Total Supplies

\$2,411.56

Total 2200 Support Services – Instructional Staff

\$2,621.56

Other Enterprise Funds (58)

2220 Technology Support Services

Elementary

Secondary

Federal

Total

600 Supplies

650 Supplies & Fees – Technology Related

2,411.56

Total Supplies

\$2,411.56

Total 2220 Technology Support Services

\$2,411.56

Other Enterprise Funds (58)

	<u>Elementary</u>	<u>Secondary</u>	<u>Federal</u>	<u>Total</u>
2270 Instructional Staff Professional Development Services				
300 <u>Purchased Professional and Technical Services</u>				
360 Employee Training and Development Services				210.00
Total Purchased Professional and Technical Services				\$210.00
Total 2270 Instructional Staff Professional Development Services				\$210.00

Other Enterprise Funds (58)

	<u>Elementary</u>	<u>Secondary</u>	<u>Federal</u>	<u>Total</u>
2600 Operation and Maintenance of Plant Services				
100 Personnel Services – Salaries				
100 Personnel Services – Salaries				1,156.50
Total Personnel Services – Salaries				\$1,156.50
200 Personnel Services – Employee Benefits				
220 Social Security Contributions				80.44
230 PSERS Retirement Contributions				344.25
250 Unemployment Compensation				2.60
260 Workers' Compensation				7.51
Total Personnel Services – Employee Benefits				\$434.80
Total 2600 Operation and Maintenance of Plant Services				\$1,591.30

Other Enterprise Funds (58)

	<u>Elementary</u>	<u>Secondary</u>	<u>Federal</u>	<u>Total</u>
2690 Other Operation and Maintenance of Plant Services				
100 Personnel Services – Salaries				
100 Personnel Services – Salaries				1,156.50
Total Personnel Services – Salaries				\$1,156.50
200 Personnel Services – Employee Benefits				
220 Social Security Contributions				80.44
230 PSERS Retirement Contributions				344.25
250 Unemployment Compensation				2.60
260 Workers' Compensation				7.51
Total Personnel Services – Employee Benefits				\$434.80
Total 2690 Other Operation and Maintenance of Plant Services				\$1,591.30

	<u>Food Service(51)</u>	<u>Child Care Operations(52)</u>	<u>Other Enterprise(58)</u>	<u>Internal Service(60)</u>	<u>Total</u>
1000 Instruction					
1600 Adult Education Programs			269,660.15		269,660.15
Total Instruction			\$269,660.15		\$269,660.15
2000 Support Services					
2200 Support Services - Instructional Staff			2,621.56		2,621.56
2600 Operation and Maintenance of Plant Services			1,591.30		1,591.30
Total Support Services			\$4,212.86		\$4,212.86
TOTAL ACTUAL EXPENDITURES & OTHER FINANCING USES			\$273,873.01		\$273,873.01