

# Merced City School District

## Boundary Adjustments 6<sup>th</sup> Grade Relocation

Community Meeting #2

January 9, 2025



# Engagement and Planning

## Partner Input

- MCSD Board Facilities Sub-Committee
- MCSD Boundary Adjustment Committee
- MCSD Staff
- MCSD Student Advisory Committee
- MCSD Parent/Community

## Decision Process

- MCSD Boundary Adjustment Committee collect and synthesize input, propose recommendations and timeline to MCSD School Board
- MCSD School Board decision on boundary adjustment map and timeline



# What has been done so far?

2023-2024 School Year	2024-2025 School Year
<p><b>October 10, 2023</b> – Educational Specifications and Building Standards</p> <p><b>December 2023</b> – Facility assessments and Principal surveys</p> <p><b>February 2024</b> - District received 2023/2024 Demographic Report</p> <p><b>February 2024</b> – Student surveys and data analyzation</p> <p><b>March 2024</b> – Facilities Master Plan Draft #1 developed</p> <p><b>April 2024</b> – Community polling for potential bond</p> <p><b>April 2024</b> – Community outreach for Facilities Master Plan</p> <p><b>May 2024</b> – District Facilities Committee Meeting</p>	<p><b>June 2024</b> - Board Workshop (Special Board Meeting)</p> <p><b>June 2024</b> - Facilities Master Plan adopted by Board of Trustees</p> <p><b>June 2024</b> - Governing Board consideration of Bond Measure</p> <p><b>Boundary Adjustment Committee Meetings:</b></p> <ul style="list-style-type: none"><li>• September 26</li><li>• October 9 &amp; 23</li><li>• November 13</li><li>• December 13</li></ul> <p><b>Staff Input Meetings:</b></p> <ul style="list-style-type: none"><li>• October 23</li><li>• November 13</li></ul> <p><b>Community Outreach Meetings</b></p> <ul style="list-style-type: none"><li>• December 3</li><li>• January 9</li></ul>

# What has been done so far?

	Committee	Staff Forum	Board	Community
September	X			
October	XX	X	X	
November	X	X	X	
December	X		X	X
January				Tonight

**Goal: Board decision in January/ February 2025**



# Scenarios and Timelines

## Scenario #1

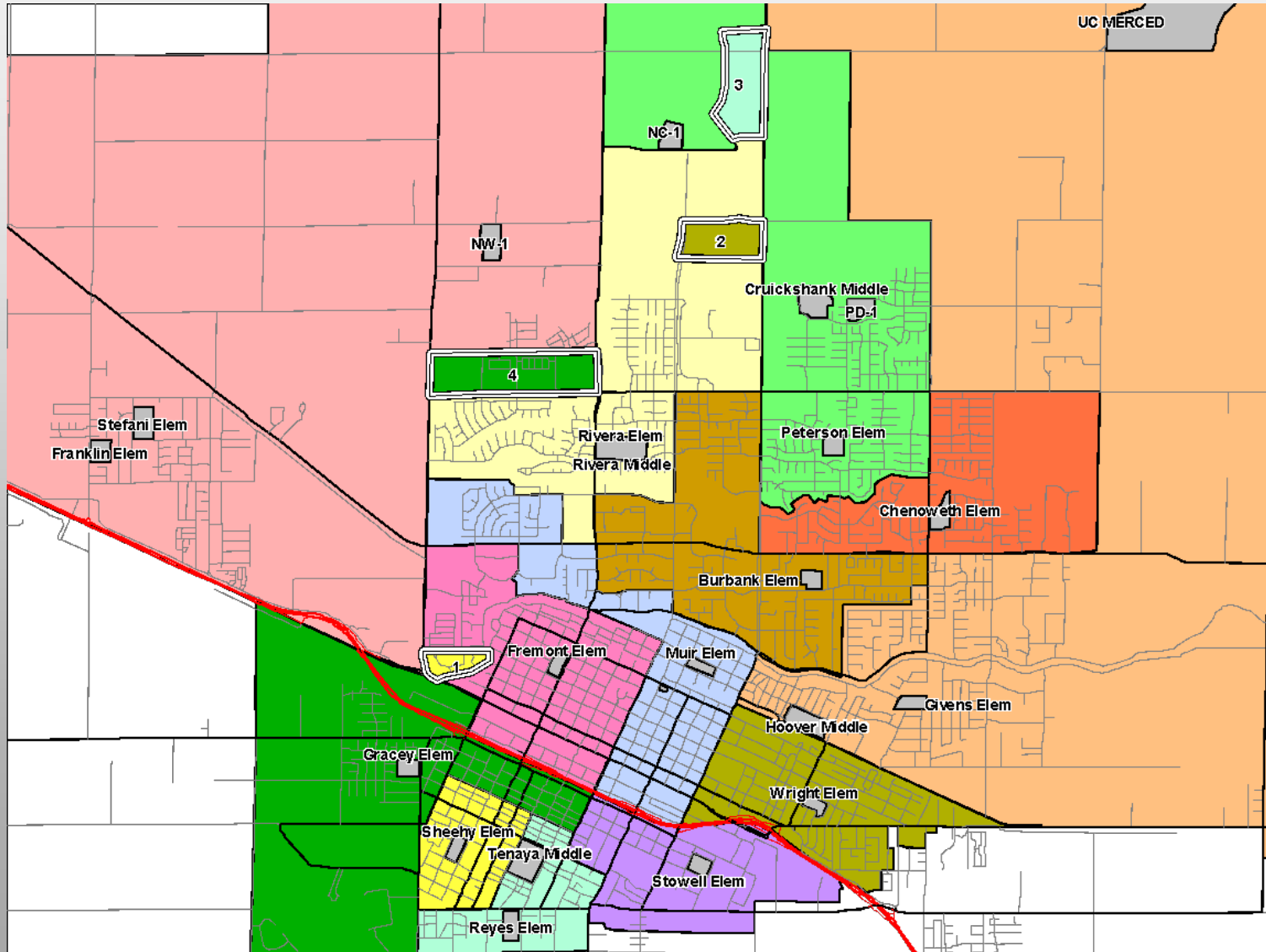
District-wide boundary adjustments, keeping 6<sup>th</sup> Grade at elementary campuses.

Implemented for 2025-2026 School Year



# Scenario #1 – Map Option #1 (Cookie Cutter)

*District-wide boundary adjustments, keeping 6<sup>th</sup> Grade at Elementary campuses.*



## Student Impacts

Area 1: 72 students

Shift from Fremont to Sheehy

Area 2: 66 students

Shift from Rivera to Wright

Area 3: 75 students

Shift from Peterson to Reyes

Area 4: 85 students

Shift from Franklin/Stefani to  
Gracey

**Total Impacts = 298 students**

Proposed by SchoolWorks to move students from areas outside the walking distance to their current schools, since bus services are already provided to them.

# Scenario #1 – Map Option #1 (Cookie Cutter)

*District-wide boundary adjustments, keeping 6<sup>th</sup> Grade at Elementary campuses.*

School Facility Utilization with Portables								
	Net	Net CR	2024/25	2025/26	2026/27	2030/31	2024/25	2030/31
Elementary Schools	Classrooms	Capacity	Current Enrollment	Projected Enrollment	Projected Enrollment	Projected Enrollment	Current Utilization	Projected Utilization
Burbank Elem	27	700	716	711	708	657	102.3%	93.9%
Chenoweth Elem	28	740	722	749	736	715	97.6%	96.6%
Franklin Elem	27	579	602	550	544	559	104.0%	96.5%
Fremont Elem	22	570	578	543	553	544	101.4%	95.4%
Givens Elem	24	635	579	556	551	499	91.2%	78.6%
Gracey Elem	24	623	509	609	623	673	81.7%	108.0%
Muir Elem	23	594	613	612	591	567	103.2%	95.5%
Peterson Elem	25	667	690	645	661	702	103.4%	105.2%
Reyes Elem	26	680	540	620	635	625	79.4%	91.9%
Rivera Elem	31	813	917	875	880	882	112.8%	108.5%
Sheehy Elem	24	633	481	546	527	476	76.0%	75.2%
Stefani Elem	22	664	641	624	630	609	96.5%	91.7%
Stowell Elem	23	541	501	490	471	458	92.6%	84.7%
Wright Elem	23	593	527	586	572	538	88.9%	90.7%
<b>Sub-Totals</b>	<b>349</b>	<b>9,032</b>	<b>8,616</b>	<b>8,716</b>	<b>8,682</b>	<b>8,504</b>	<b>95.4%</b>	<b>94.2%</b>
<b>Middle Schools</b>								
Cruickshank Middle	31	992	624	609	646	794	62.9%	80.0%
Hoover Middle	25	800	629	664	692	635	78.6%	79.4%
Rivera Middle	22	704	608	614	609	634	86.4%	90.1%
Tenaya Middle	33	1,056	607	578	517	467	57.5%	44.2%
<b>Sub-Totals</b>	<b>111</b>	<b>3,552</b>	<b>2,468</b>	<b>2,465</b>	<b>2,464</b>	<b>2,530</b>	<b>69.5%</b>	<b>71.2%</b>

## Student Impacts

Area 1: 72 students

Shift from Fremont to Sheehy

Area 2: 66 students

Shift from Rivera to Wright

Area 3: 75 students

Shift from Peterson to Reyes

Area 4: 85 students

Shift from Franklin/Stefani to

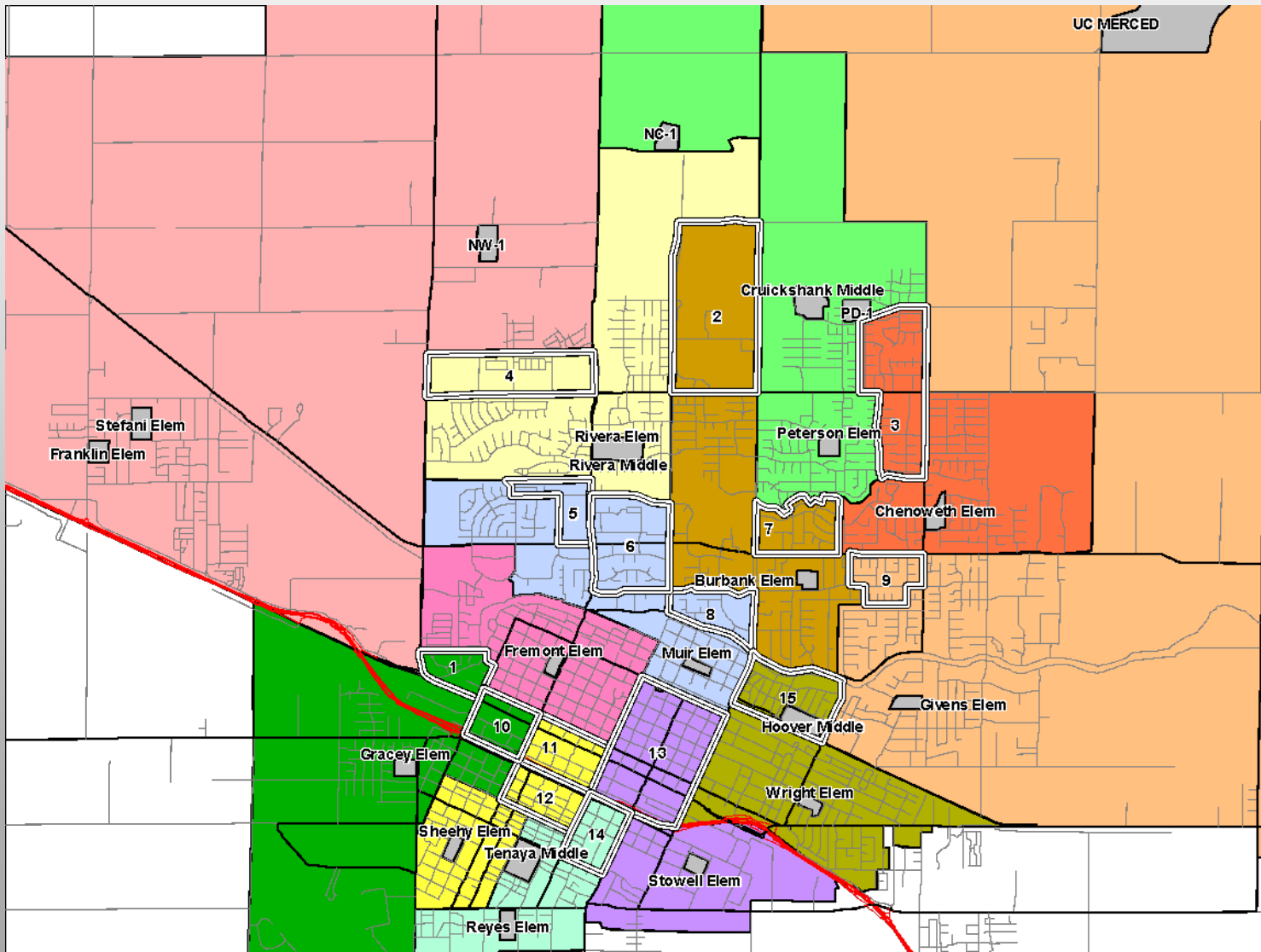
Gracey

**Total Impacts = 298 students**

Proposed by SchoolWorks to move students from areas outside the walking distance to their current schools, so bus services are already provided to them.

# Scenario #1 – Map Option #2 (Larger Scale)

*District-wide boundary adjustments, keeping 6<sup>th</sup> Grade at Elementary campuses.*



## Student Impacts

- Area 1: 75 from Fremont to Gracey
  - Area 2: 66 from Rivera to Burbank
  - Area 3: 131 from Peterson to Chenoweth
  - Area 4: 85 from Franklin/Stefani to Rivera
  - Area 5: 75 from Rivera to Muir
  - Area 6: 56 from Burbank to Muir
  - Area 7: 132 from Chenoweth to Burbank
  - Area 8: 52 from Burbank to Muir
  - Area 9: 119 from Burbank to Givens
  - Area 10: 5 from Fremont to Gracey
  - Area 11: 12 from Fremont to Sheehy
  - Area 12: 85 from Gracey to Sheehy
  - Area 13: 155 from Muir to Stowell
  - Area 14: 117 from Stowell to Reyes
  - Area 15: 65 from Givens to Wright
- Total Impacts = 1,230 students**

Requested by MCSD Boundary Adjustment Committee to keep students closer to home than Map Option #1



# Scenario #1 – Map Option #2 (Larger Scale)

*District-wide boundary adjustments, keeping 6<sup>th</sup> Grade at Elementary campuses.*

## School Facility Utilization with Portables

			2024/25	2025/26	2026/27	2030/31	2024/25	2030/31
	Net	Net CR	Current	Projected	Projected	Projected	Current	Projected
<u>Elementary Schools</u>	<u>Classrooms</u>	<u>Capacity</u>	<u>Enrollment</u>	<u>Enrollment</u>	<u>Enrollment</u>	<u>Enrollment</u>	<u>Utilization</u>	<u>Utilization</u>
Burbank Elem	27	698	716	687	678	621	102.6%	89.0%
Chenoweth Elem	28	730	722	763	753	755	98.9%	103.4%
Franklin Elem	27	579	602	550	544	559	104.0%	96.5%
Fremont Elem	22	570	578	520	526	513	101.4%	90.0%
Givens Elem	24	624	579	607	611	551	92.8%	88.3%
Gracey Elem	24	621	509	502	519	518	82.0%	83.4%
Muir Elem	23	594	613	647	628	635	103.2%	106.9%
Peterson Elem	25	667	690	591	618	661	103.4%	99.1%
Reyes Elem	26	680	540	651	651	642	79.4%	94.4%
Rivera Elem	31	813	917	907	919	944	112.8%	116.1%
Sheehy Elem	24	644	481	565	538	479	74.7%	74.4%
Stefani Elem	22	664	641	624	630	609	96.5%	91.7%
Stowell Elem	23	437	501	527	505	463	114.6%	105.9%
Wright Elem	23	593	527	572	552	511	88.9%	86.2%
<b>Sub-Totals</b>	<b>349</b>	<b>8,914</b>	<b>8,616</b>	<b>8,713</b>	<b>8,672</b>	<b>8,461</b>	<b>96.7%</b>	<b>94.9%</b>
<u>Middle Schools</u>								
Cruickshank Middle	31	992	624	609	646	794	62.9%	80.0%
Hoover Middle	25	800	629	664	692	635	78.6%	79.4%
Rivera Middle	22	704	608	614	609	634	86.4%	90.1%
Tenaya Middle	33	1,056	607	578	517	467	57.5%	44.2%
<b>Sub-Totals</b>	<b>111</b>	<b>3,552</b>	<b>2,468</b>	<b>2,465</b>	<b>2,464</b>	<b>2,530</b>	<b>69.5%</b>	<b>71.2%</b>

## Student Impacts

Area 1: 75 from Fremont to Gracey  
Area 2: 66 from Rivera to Burbank  
Area 3: 131 from Peterson to Chenoweth  
Area 4: 85 from Franklin/Stefani to Rivera  
Area 5: 75 from Rivera to Muir  
Area 6: 56 from Burbank to Muir  
Area 7: 132 from Chenoweth to Burbank  
Area 8: 52 from Burbank to Muir  
Area 9: 119 from Burbank to Givens  
Area 10: 5 from Fremont to Gracey  
Area 11: 12 from Fremont to Sheehy  
Area 12: 85 from Gracey to Sheehy  
Area 13: 155 from Muir to Stowell  
Area 14: 117 from Stowell to Reyes  
Area 15: 65 from Givens to Wright  
**Total Impacts = 1,230 students**

Requested by MCSD Boundary Adjustment  
Committee to keep students closer to home  
than Map Option #1

# **Scenarios and Timelines**

## **Scenario #2**

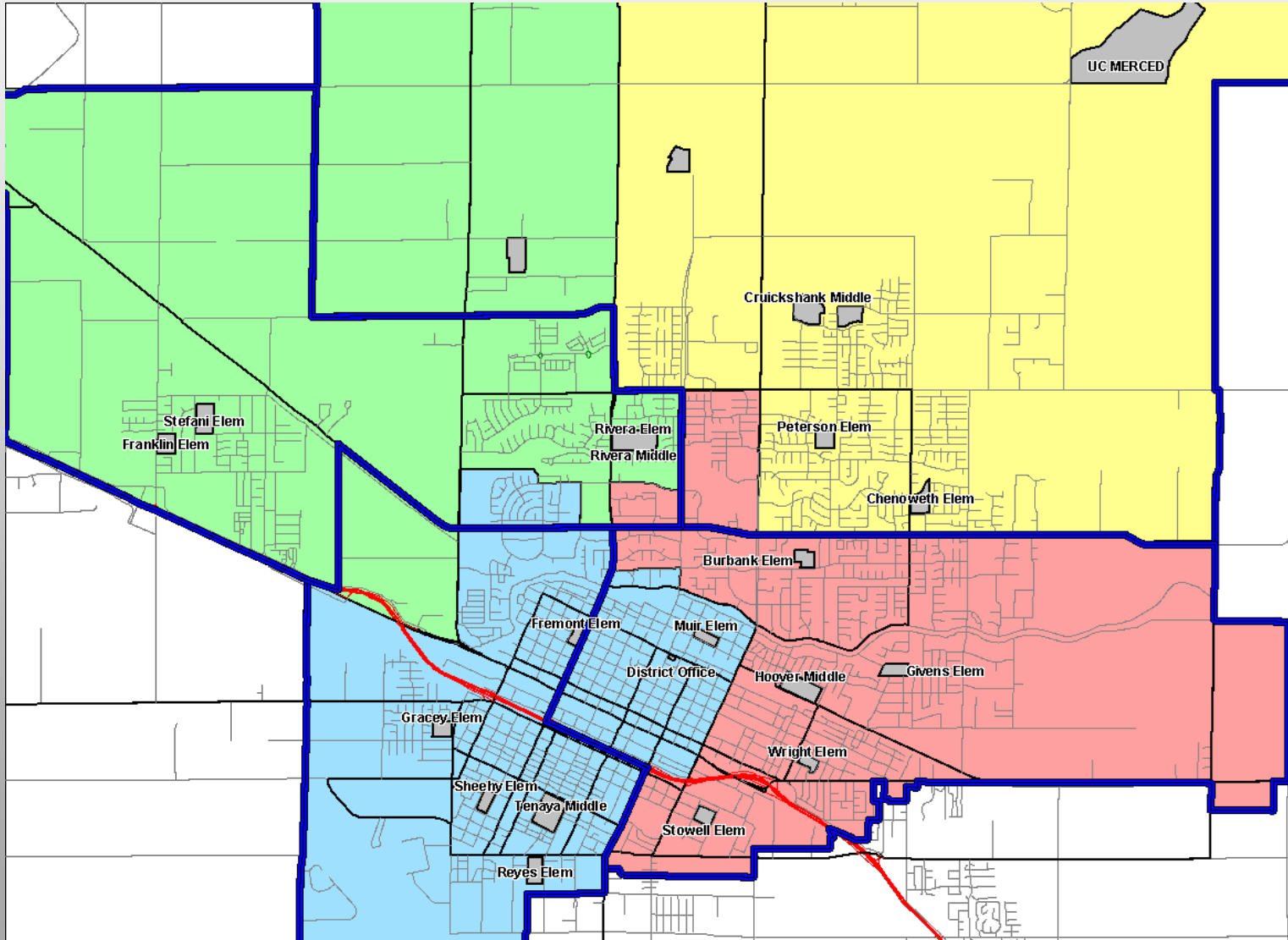
District-wide boundary adjustments and move 6<sup>th</sup> Grade to Middle Schools.

**Implemented for 2025/2026 School Year**



# Scenario #2 – Full Data Still being collected

*District-wide boundary adjustments, move 6<sup>th</sup> Grade to Middle Schools both in 25/26*



## Student Impacts

Relocates 6<sup>th</sup> Grade to Middle Schools  
(approximately 1200 students)

Boundary Adjustments result in approximately 312  
current 7<sup>th</sup> Grade Students being relocated for 8<sup>th</sup>  
Grade.

Blue Lines are current Middle School  
Boundaries, and colored areas are  
proposed new boundary lines.

## Scenario #2 – Full Data Still being collected

*District-wide boundary adjustments, move 6<sup>th</sup> Grade to Middle Schools*

### School Facility Utilization with Portables

			2024/25	2025/26	2026/27	2030/31	2024/25	2030/31
	Net	Net CR	Current	Projected	Projected	Projected	Current	Projected
<u>Elementary Schools</u>	<u>Classrooms</u>	<u>Capacity</u>	<u>Enrollment</u>	<u>Enrollment</u>	<u>Enrollment</u>	<u>Enrollment</u>	<u>Utilization</u>	<u>Utilization</u>
Burbank Elem	27	700	716	619	613	574	102.3%	82.0%
Chenoweth Elem	28	719	722	626	631	599	100.4%	83.3%
Franklin Elem	27	633	602	546	545	554	95.1%	87.5%
Fremont Elem	22	552	578	537	549	539	104.7%	97.6%
Givens Elem	24	610	579	493	481	445	94.9%	73.0%
Gracey Elem	24	612	509	450	442	427	83.2%	69.8%
Muir Elem	23	577	613	508	500	476	106.2%	82.5%
Peterson Elem	25	643	690	628	652	682	107.3%	106.1%
Reyes Elem	26	681	540	470	454	437	79.3%	64.2%
Rivera Elem	31	788	917	811	821	777	116.4%	98.6%
Sheehy Elem	24	620	481	395	382	343	77.6%	55.3%
Stefani Elem	22	632	641	557	577	567	101.4%	89.7%
Stowell Elem	23	449	501	414	407	398	111.6%	88.6%
Wright Elem	23	593	527	429	414	393	88.9%	66.3%
<b>Sub-Totals</b>	<b>349</b>	<b>8,809</b>	<b>8,616</b>	<b>7,483</b>	<b>7,468</b>	<b>7,211</b>	<b>97.8%</b>	<b>81.9%</b>
<u>Middle Schools</u>								
Cruikshank Middle	31	992	624	809	793	951	62.9%	95.9%
Hoover Middle	25	800	629	873	845	750	78.6%	93.8%
Rivera Middle	22	704	608	825	780	869	86.4%	123.4%
Tenaya Middle	33	1,056	607	1,019	1,084	1,002	57.5%	94.9%
<b>Sub-Totals</b>	<b>111</b>	<b>3,552</b>	<b>2,468</b>	<b>3,526</b>	<b>3,502</b>	<b>3,572</b>	<b>69.5%</b>	<b>100.6%</b>

### Student Impacts

Relocates 6<sup>th</sup> Grade to Middle Schools  
(approximately 1200 students)

Boundary Adjustments result in approximately 312  
current 7<sup>th</sup> Grade Students being relocated for 8<sup>th</sup>  
Grade.

Blue Lines are current Middle School  
Boundaries, and colored areas are  
proposed new boundary lines.

# Scenarios and Timelines

## Scenario #3

Phase 1 – Adjust Elementary School Boundaries 2025 / 2026  
Phase 2 – Move 6<sup>th</sup> Grade Students to Middle Schools 2026/2027

**Implemented over the next 2 school years**



# Scenario #3

*Phased Approach: 25/26 - Elementary Boundaries, 26/27 – Move 6<sup>th</sup> Grade*

## School Facility Utilization with Portables

			2024/25	2025/26	2026/27	2030/31	2024/25	2030/31
	Net	Net CR	Current	Projected	Projected	Projected	Current	Projected
<u>Elementary Schools</u>	<u>Classrooms</u>	<u>Capacity</u>	<u>Enrollment</u>	<u>Enrollment</u>	<u>Enrollment</u>	<u>Enrollment</u>	<u>Utilization</u>	<u>Utilization</u>
Burbank Elem	27	698	716	687	573	538	102.6%	77.1%
Chenoweth Elem	28	730	722	763	646	629	98.9%	86.2%
Franklin Elem	27	579	602	550	499	513	104.0%	88.6%
Fremont Elem	22	570	578	520	455	445	101.4%	78.1%
Givens Elem	24	624	579	607	531	489	92.8%	78.4%
Gracey Elem	24	621	509	502	464	451	82.0%	72.6%
Muir Elem	23	594	613	647	537	536	103.2%	90.2%
Peterson Elem	25	667	690	591	535	558	103.4%	83.7%
Reyes Elem	26	680	540	651	554	553	79.4%	81.3%
Rivera Elem	31	813	917	907	794	779	112.8%	95.8%
Sheehy Elem	24	644	481	565	462	421	74.7%	65.4%
Stefani Elem	22	664	641	624	518	495	96.5%	74.5%
Stowell Elem	23	437	501	527	439	405	114.6%	92.7%
Wright Elem	23	593	527	572	472	451	88.9%	76.1%
<b>Sub-Totals</b>	<b>349</b>	<b>8,914</b>	<b>8,616</b>	<b>8,713</b>	<b>7,479</b>	<b>7,263</b>	<b>96.7%</b>	<b>81.5%</b>
<u>Middle Schools</u>								
Cruickshank Middle	31	992	624	609	793	951	62.9%	95.9%
Hoover Middle	25	800	629	664	845	750	78.6%	93.8%
Rivera Middle	22	704	608	614	780	869	86.4%	123.4%
Tenaya Middle	33	1,056	607	578	1,084	1,002	57.5%	94.9%
<b>Sub-Totals</b>	<b>111</b>	<b>3,552</b>	<b>2,468</b>	<b>2,465</b>	<b>3,502</b>	<b>3,572</b>	<b>69.5%</b>	<b>100.6%</b>

# Scenarios and Timelines

## Scenario #4

Phase 1 - Move 6<sup>th</sup> Grade Students to Middle Schools 2025 / 2026

Phase 2 - Adjust Elementary School Boundaries 2026 / 2027

**Implemented over the next 2 school years**



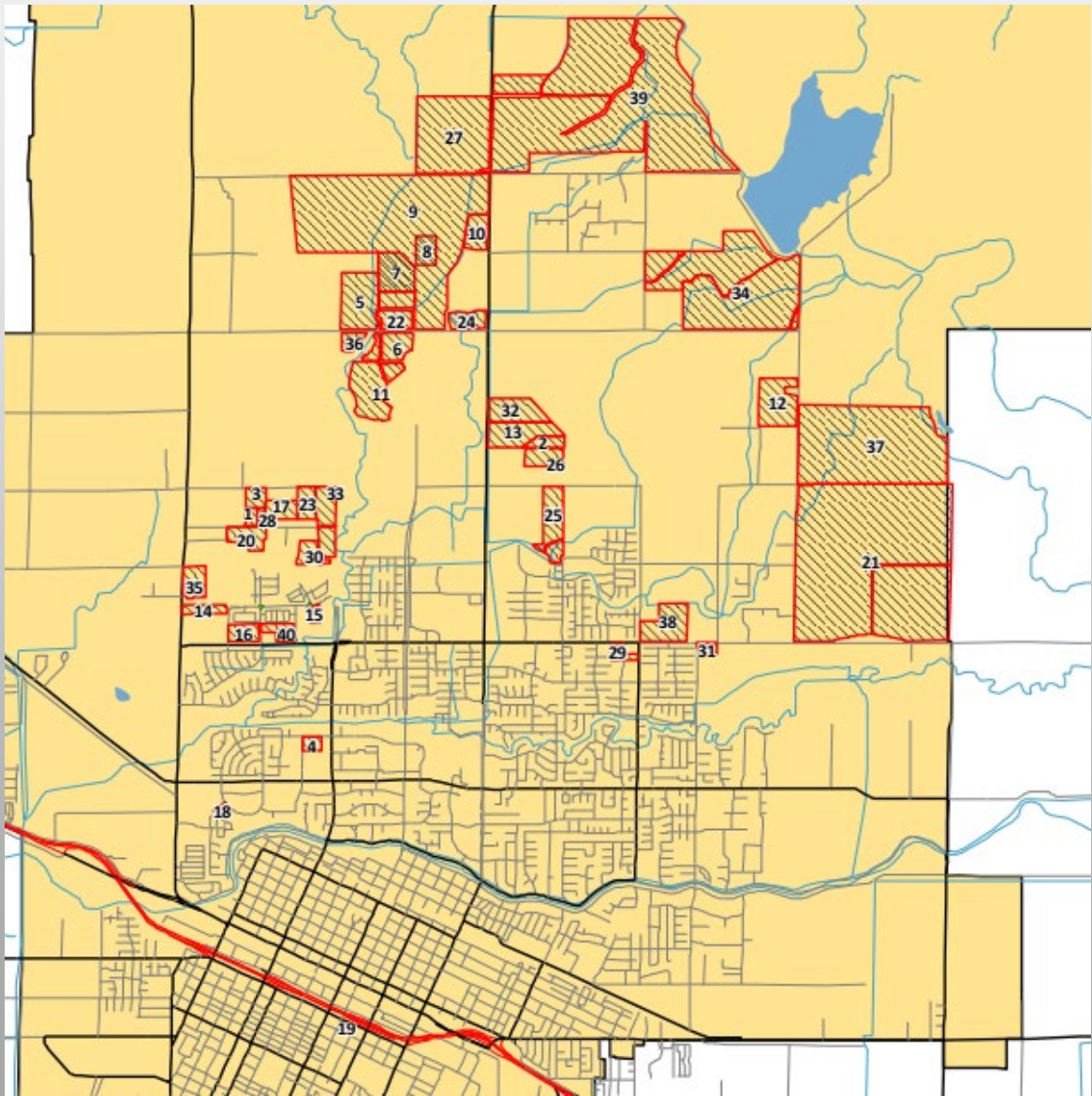
## Scenario #4

*Phased Approach: 25/26 – Move 6<sup>th</sup> Grade, 26/27 – Elementary Boundary Adjustments*

<b>School Facility Utilization with Portables</b>								
			2024/25	2025/26	2026/27	2030/31	2024/25	2030/31
<u>Elementary Schools</u>	<u>Net</u>	<u>Net CR</u>	<u>Current</u>	<u>Projected</u>	<u>Projected</u>	<u>Projected</u>	<u>Current</u>	<u>Projected</u>
	<u>Classrooms</u>	<u>Capacity</u>	<u>Enrollment</u>	<u>Enrollment</u>	<u>Enrollment</u>	<u>Enrollment</u>	<u>Utilization</u>	<u>Utilization</u>
Burbank Elem	27	698	716	619	573	538	102.6%	77.1%
Chenoweth Elem	28	730	722	626	646	629	98.9%	86.2%
Franklin Elem	27	579	602	546	499	513	104.0%	88.6%
Fremont Elem	22	570	578	537	455	445	101.4%	78.1%
Givens Elem	24	624	579	493	531	489	92.8%	78.4%
Gracey Elem	24	621	509	450	464	451	82.0%	72.6%
Muir Elem	23	594	613	508	537	536	103.2%	90.2%
Peterson Elem	25	667	690	628	535	558	103.4%	83.7%
Reyes Elem	26	680	540	470	554	553	79.4%	81.3%
Rivera Elem	31	813	917	811	794	779	112.8%	95.8%
Sheehy Elem	24	644	481	395	462	421	74.7%	65.4%
Stefani Elem	22	664	641	557	518	495	96.5%	74.5%
Stowell Elem	23	437	501	414	439	405	114.6%	92.7%
Wright Elem	23	593	527	429	472	451	88.9%	76.1%
<b>Sub-Totals</b>	<b>349</b>	<b>8,914</b>	<b>8,616</b>	<b>7,483</b>	<b>7,479</b>	<b>7,263</b>	<b>96.7%</b>	<b>81.5%</b>
<b>Middle Schools</b>								
Cruickshank Middle	31	992	624	809	793	951	62.9%	95.9%
Hoover Middle	25	800	629	873	845	750	78.6%	93.8%
Rivera Middle	22	704	608	825	780	869	86.4%	123.4%
Tenaya Middle	33	1,056	607	1,019	1,084	1,002	57.5%	94.9%
<b>Sub-Totals</b>	<b>111</b>	<b>3,552</b>	<b>2,468</b>	<b>3,526</b>	<b>3,502</b>	<b>3,572</b>	<b>69.5%</b>	<b>100.6%</b>



# Building Projections



Total Units	23,839
Projected within 6 years	1,983
TK-6 Students (projected)*	498
Middle School (projected)*	139
* = projected within 6 years	



# Building Projections

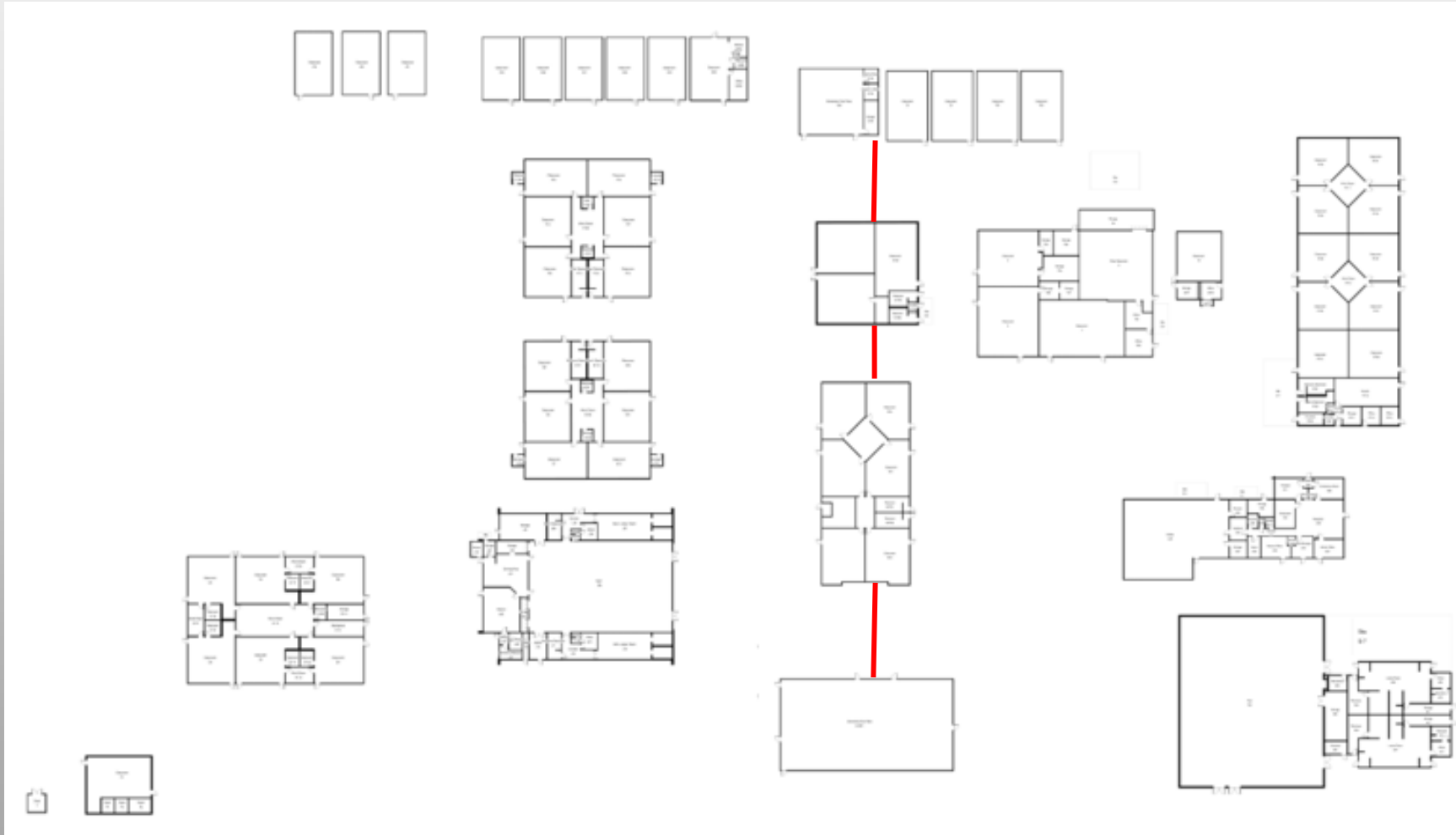
Merced City School District New Development Construction Housing Units per Year							
<u>School</u>	<u>25/26</u> <u>Year 1</u>	<u>26/27</u> <u>Year 2</u>	<u>27/28</u> <u>Year 3</u>	<u>28/29</u> <u>Year 4</u>	<u>29/30</u> <u>Year 5</u>	<u>30/31</u> <u>Year 6</u>	<u>Totals</u>
Burbank Elem	0	0	0	0	0	0	0
Chenoweth Elem	0	0	0	0	0	0	0
Franklin Elem	162	67	86	162	175	200	852
Fremont Elem	60	25	0	0	0	0	85
Givens Elem	0	0	0	0	0	50	50
Gracey Elem	0	0	0	0	0	0	0
Muir Elem	0	0	0	0	0	0	0
Peterson Elem	101	104	169	201	191	105	871
Reyes Elem	0	0	0	0	0	0	0
Rivera Elem	0	0	0	0	25	50	75
Sheehy Elem	0	0	0	0	0	0	0
Stefani Elem	162	67	86	162	175	200	852
Stowell Elem	0	0	25	25	0	0	50
Wright Elem	0	0	0	0	0	0	0
<b>Elementary Totals</b>	<b>323</b>	<b>196</b>	<b>280</b>	<b>388</b>	<b>391</b>	<b>405</b>	<b>1,983</b>
Cruickshank Middle	168	151	255	313	316	230	1,433
Hoover Middle	0	0	0	0	0	0	0
Rivera Middle	95	20	0	50	75	175	415
Tenaya Middle	60	25	25	25	0	0	135
<b>Middle Totals</b>	<b>323</b>	<b>196</b>	<b>280</b>	<b>388</b>	<b>391</b>	<b>405</b>	<b>1,983</b>

Note:

Demographers show housing developments impacting Franklin and Stefani boundaries, however they did not add both figures into the total, as they share the same boundaries.



# Rivera - Area of Concern



Additional information and mapping options have been requested from our demographer.

Every Scenario still has the projected enrollment of these campuses to be over the combined capacity.



**Thank you to our team and stakeholders for their help in getting us to this point. The work is not done.**

Questions?

