

SCHOOL DISTRICT U-46



May 6, 2024

Attendance Boundary Recommendation for New Middle School

Boundary Recommendations

- Presented to the Board of Education for the new middle school in Bartlett
 - At former Hawk Hollow Elementary site
 - Scheduled for occupancy in August 2025
- Board will vote on May 20, 2024 whether to approve these recommendations



Virtual Walk-Through

Scan QR Code →



Community Based Boundary Guidelines and Criteria



School District U-46: Boundary Changes Survey

Would you like to take the survey in English or Spanish?
¿Le gustaría realizar la encuesta en inglés o español?

- ☐ English
Inglés
- ☐ Spanish
Español



Boundary Guidelines and Criteria Prioritized by the U-46 Community

- Distance and travel times to school
- Consistent feeder patterns
- Proximity to schools and keeping communities together
- Ability of siblings to stay at the same school
- Stability of attendance boundaries.
Avoid changes in two consecutive years



Boundary Criteria Survey
Scan QR Code →
By May 15th



Impact of Development on Enrollment

Rt 59

The Village of Bartlett

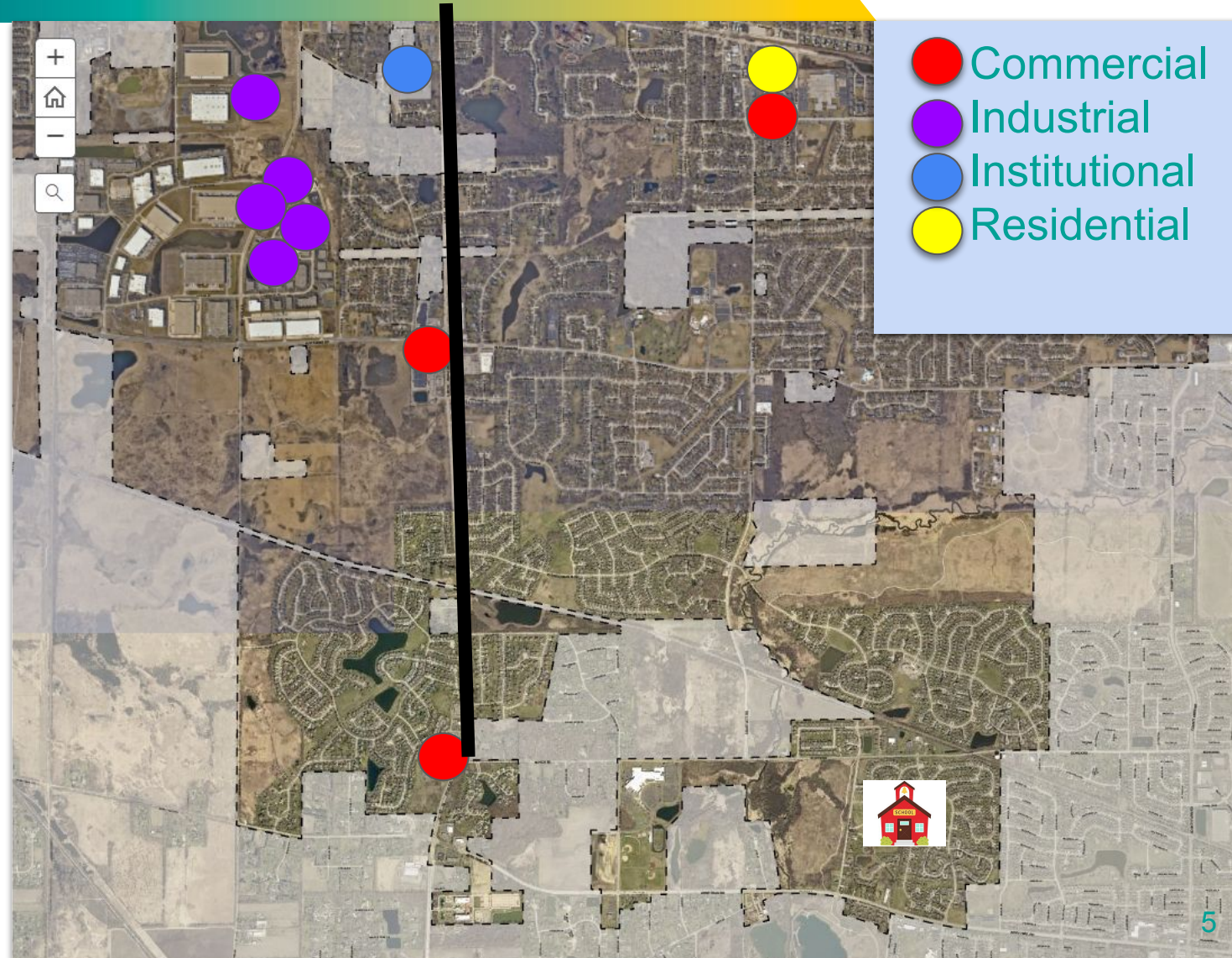


Current Development Projects in the Village

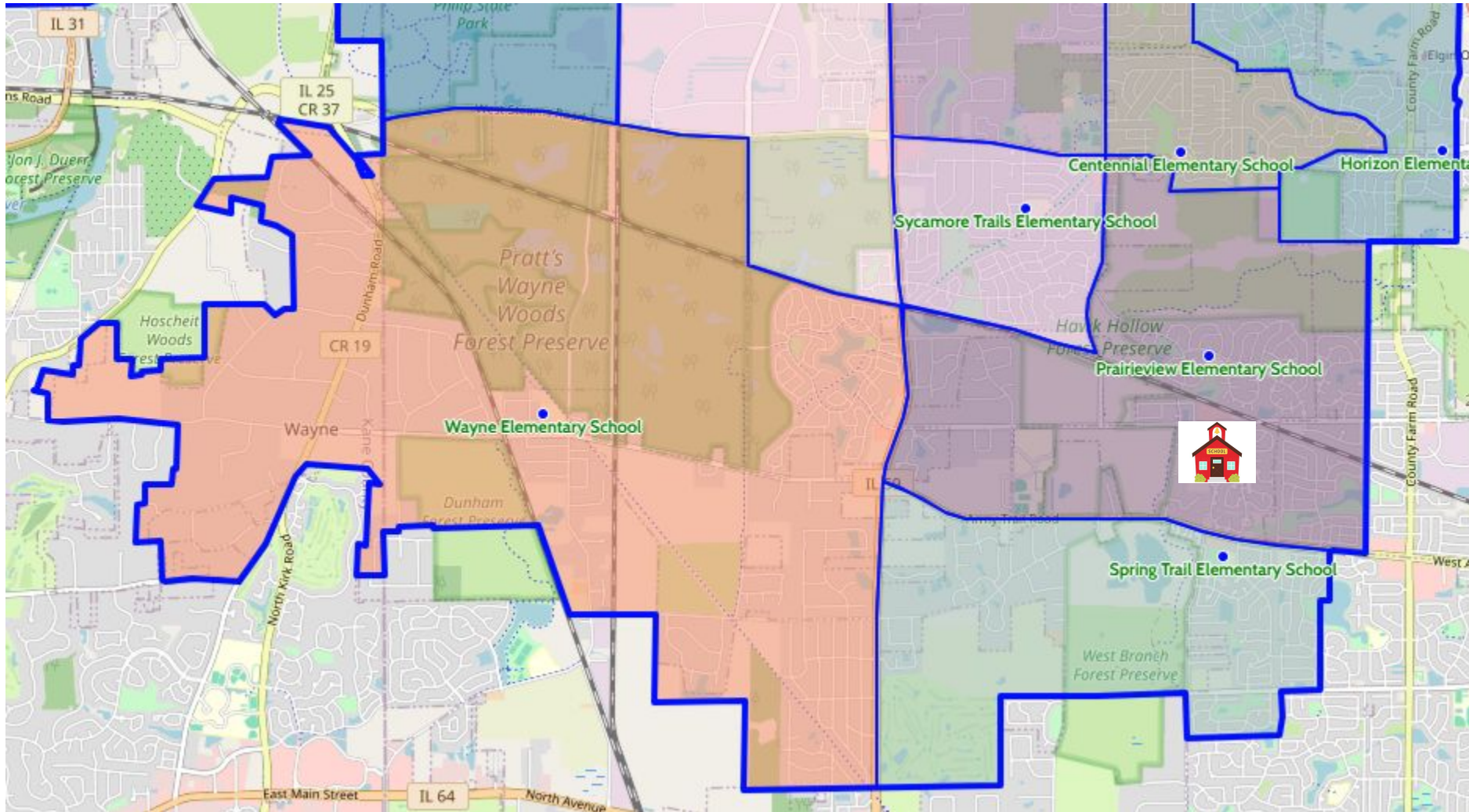
Explore the map on the right for current and proposed construction projects in the Village. Click on each of the colored circles for more information. You can also scroll through the left-side panel to see the entire list of projects. Currently, there are a total of 22 developments throughout the Village.

For additional information about these projects contact the Planning and Development Services Department (PDS) at (630)540-5920.

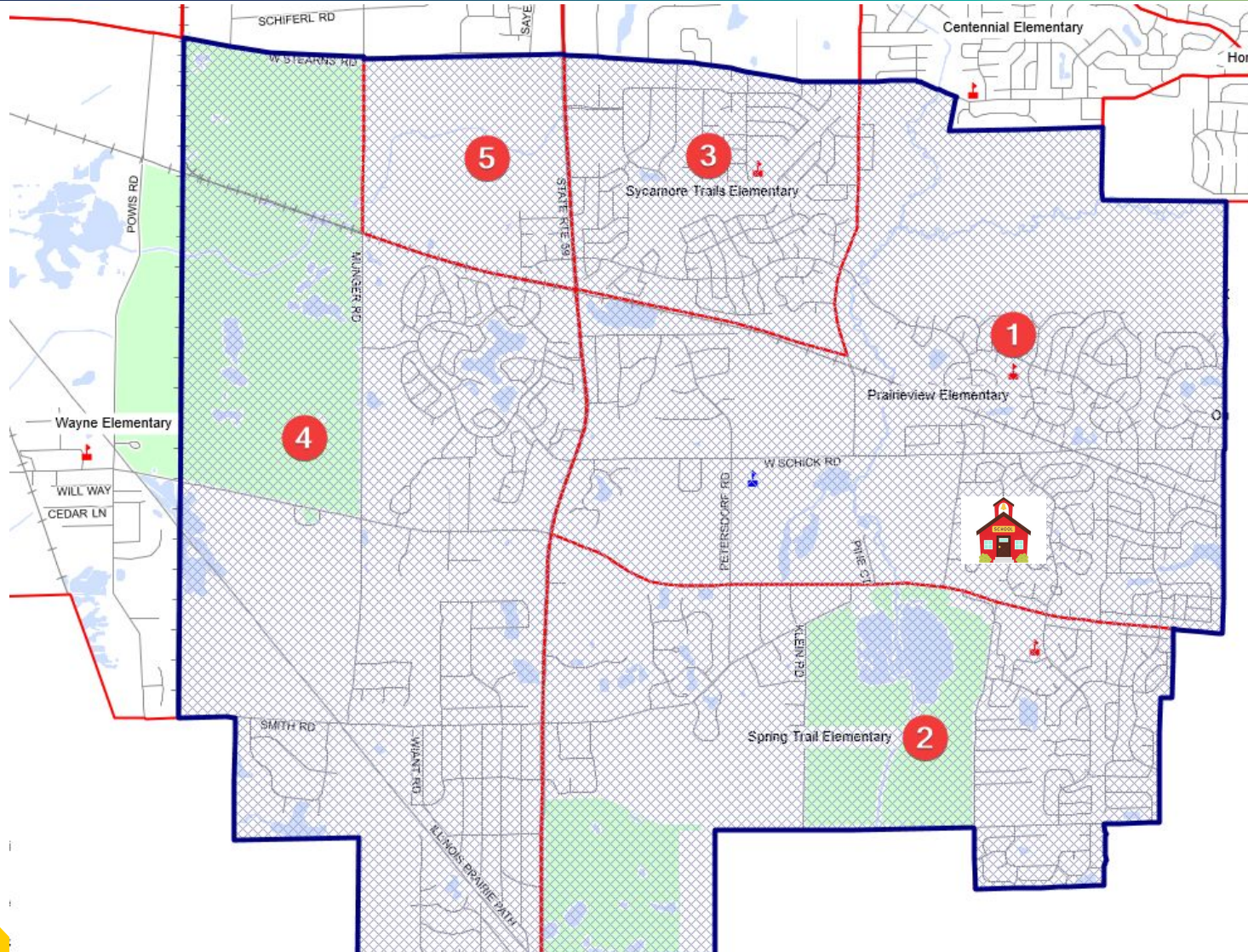
Source: [Village of Bartlett website](#)



Location of New Middle School



Recommended Boundary Map

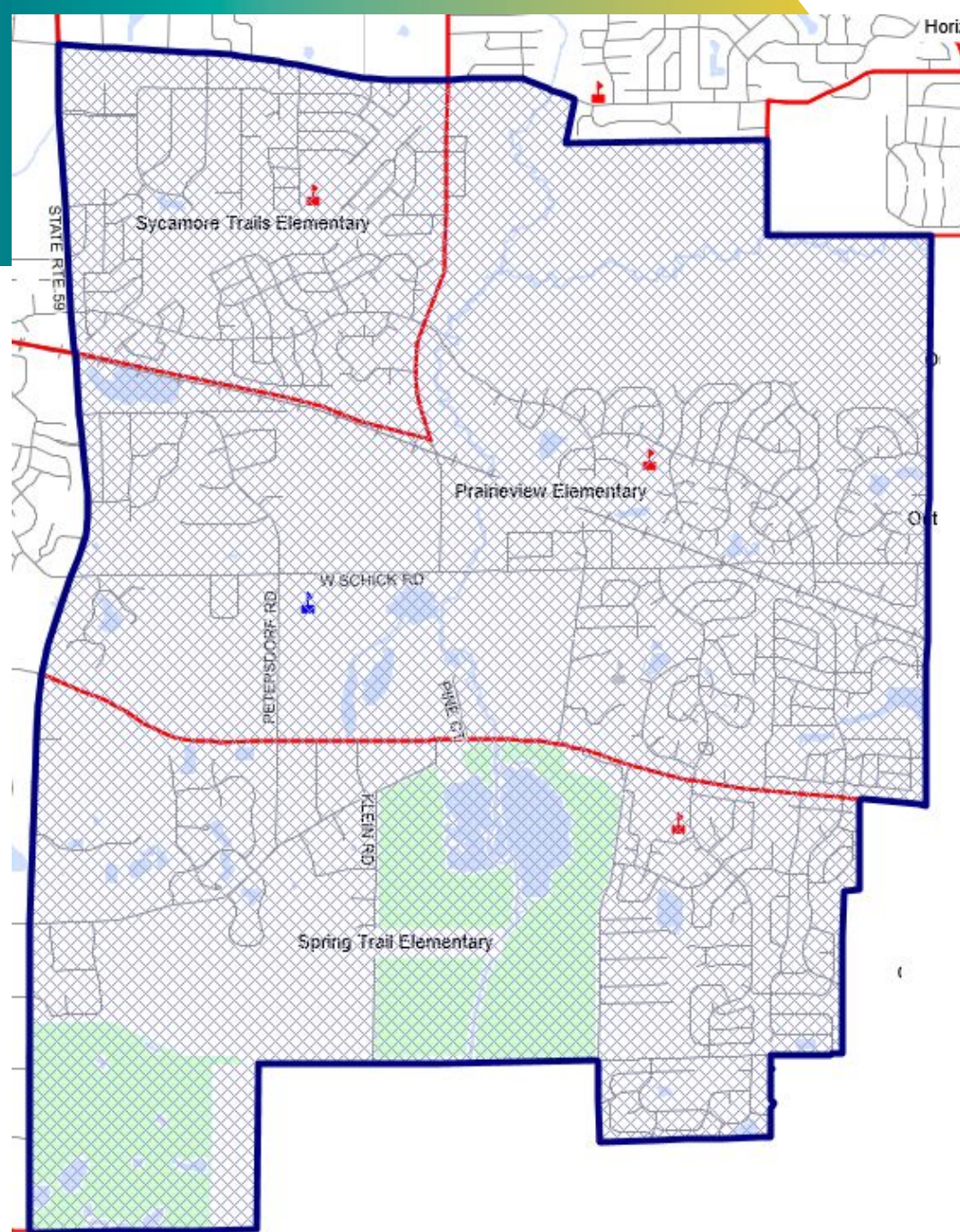


Will serve students assigned to the following elementary schools as their “home schools”:

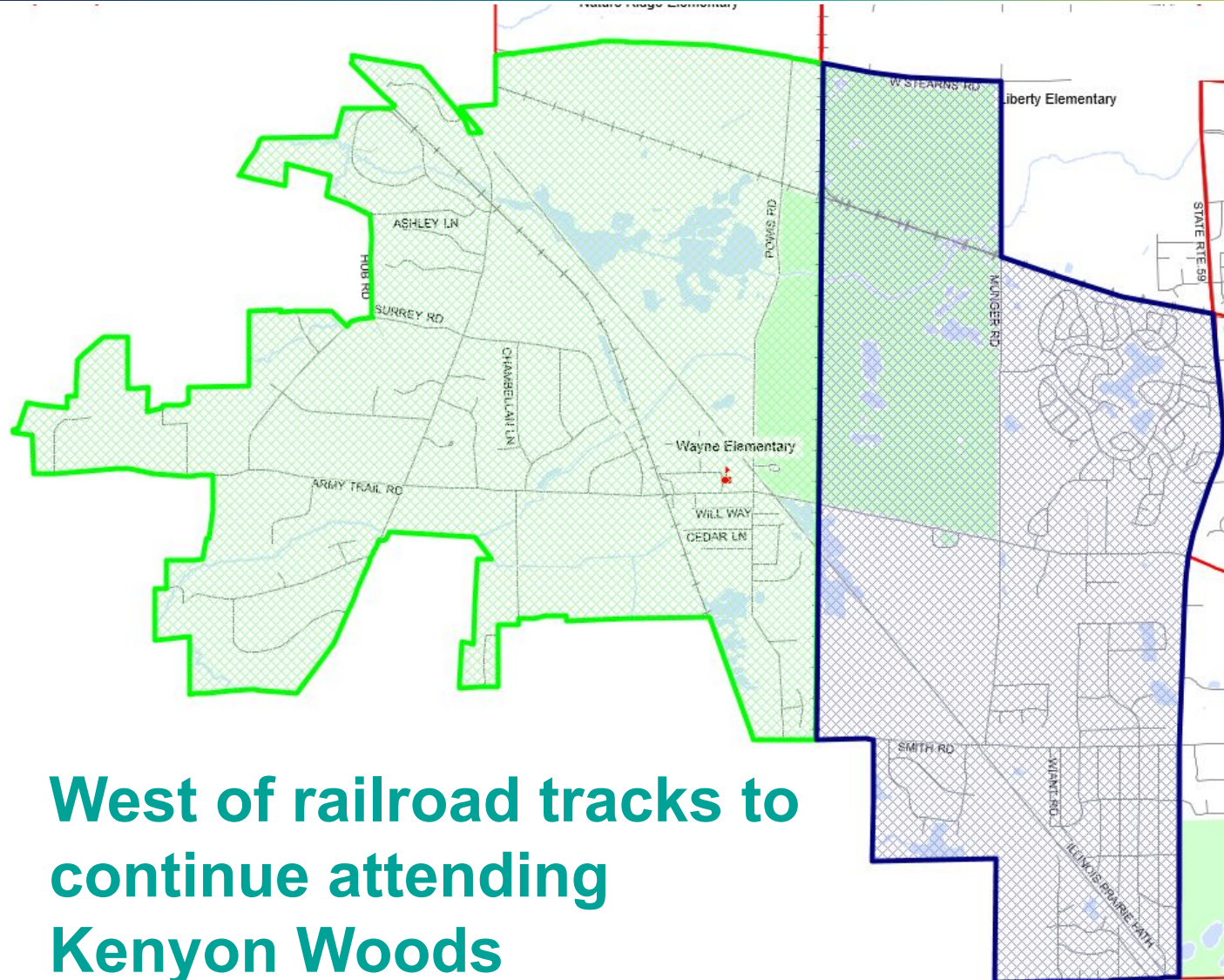
1. Prairieview Elementary (all)
2. Spring Trail Elementary (all)
3. Sycamore Trails Elementary (all)
4. Wayne Elementary (east of Elgin Joliet and Eastern Railway tracks)
5. Liberty Elementary (south of Stearns Road)

Prairieview, Spring Trail, Sycamore Trails

**All students to
attend new middle
school**



Wayne Elementary

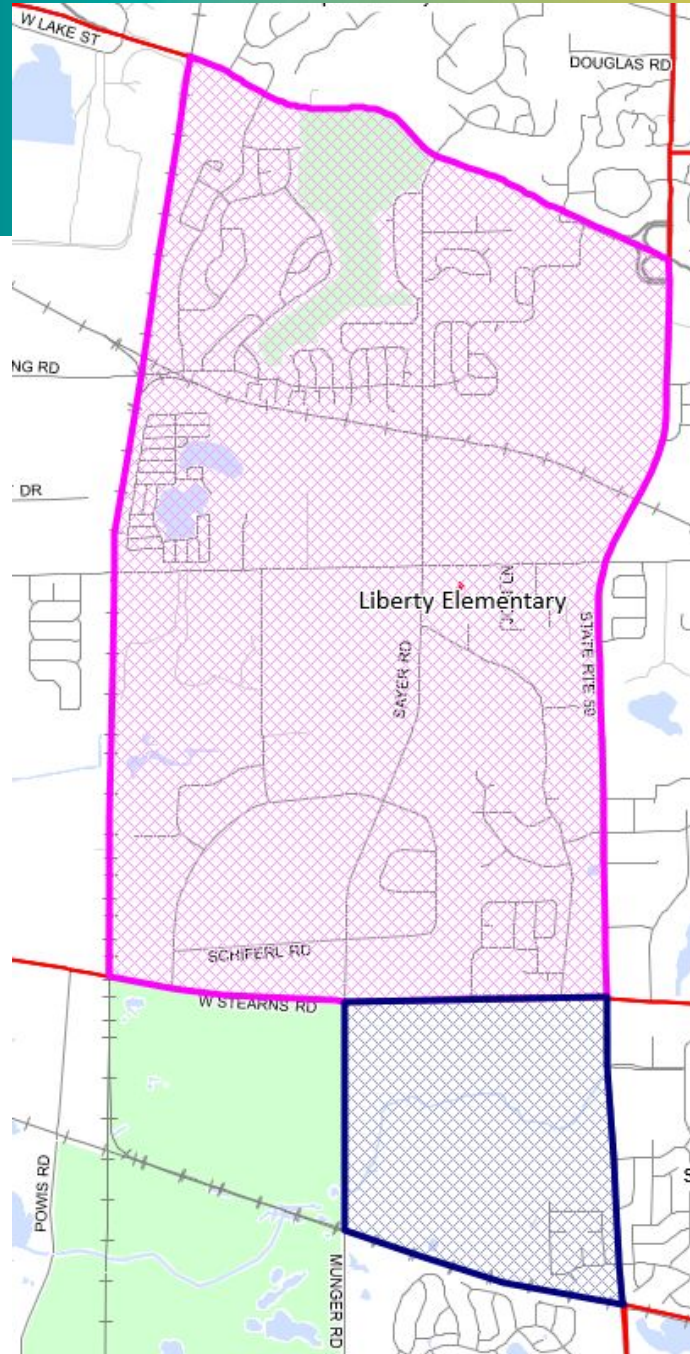


**East of railroad
tracks to attend
new middle
school**

**West of railroad tracks to
continue attending
Kenyon Woods**

Liberty Elementary

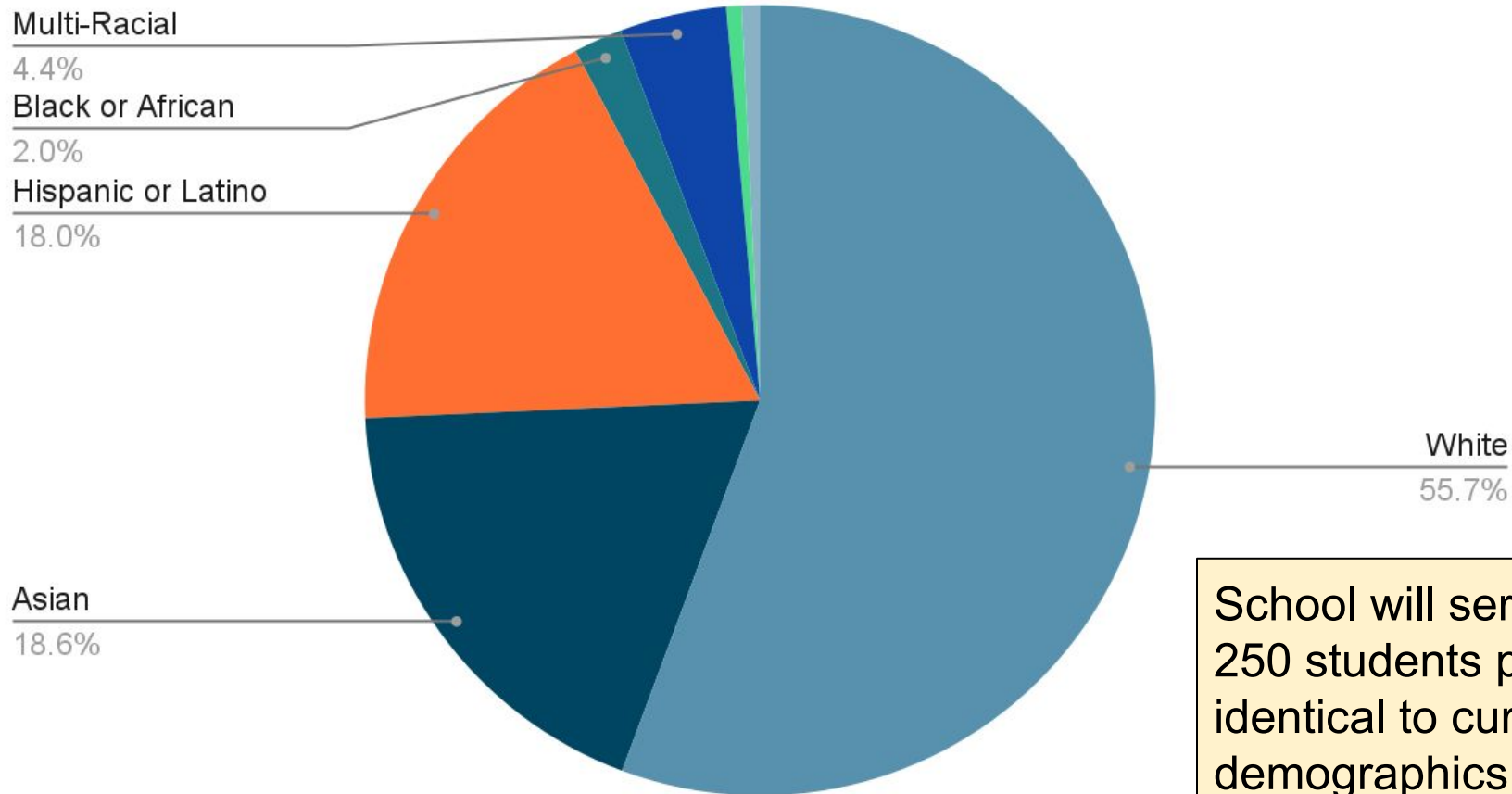
**North of Stearns Road to
continue attending
Kenyon Woods Middle
School**



**South of Stearns
Road to attend
new middle
school**

Projected Demographics for New Middle School

Projected Demographics by Race/Ethnicity



School will serve approximately 250 students per grade. Almost identical to current demographics at Eastview Middle School.

Plan For Opening New Middle School in Bartlett

- Open August 2025
 - 7th grade only
- Considerations
 - Student transitions
 - Impact on athletics and other extracurricular activities
 - Building access
 - Staffing implications
 - Other considerations
- Starting in 2026-2027 school year to serve grades 6th, 7th, and 8th grades



Thank You!

