

Professional Development Update 2021-2022

Dr. Josh Carpenter

Assistant Superintendent for Teaching and Learning

Heather Fellows

Teacher Leader for Professional Development



Changes since 2020-2021 School Year

- Worked on aligning Professional Development (PD) using the lens of U-46 Rising.
- Reintroduced in-person PD, including hosting New Teacher Orientation (NTO) in-person.
- Piloted new exit ticket.
- Brought in new supports to help educators better access PD that matches their roles/responsibilities.

645

Courses, including asynchronous offerings

3,908

Unique users

25,000+

Individual enrollments



Piloted Exit Ticket

Virtual Four-Square Feedback Form

Please share your thoughts from this PD session/meeting as you would on the paper form. All responses will be anonymous and email addresses are NOT being collected.

* Required

What worked? *

Your answer

What more information do you need? (What next learning would you like?) *

Your answer

What questions do you still have? (What could we have better explained?) *

Your answer

Learning Target/Language Target/Success Criteria PD Reflection

* Required

Session Learning Targets/Success Criteria:

Session Learning Targets:
I am learning to explain the importance of learning targets, language targets, and success criteria in the classroom.
I am learning how learning targets, language targets, and success criteria are connected.
I am learning how to create effective learning targets, language targets, and success criteria.
Success Criteria:
I can explain the difference between a learning target, language target, and success criteria.
I can explain the importance of targets and success criteria in the classroom.
I can create my own learning targets for a standard.
I can create my own language targets for a standard.
I can create my own success criteria for a target.

Please rate your learning on each of the success criteria *

Not Yet In Progress Met

I can explain the difference between a learning target, language target, and success criteria

☐

☐

☐

I can explain the importance of targets and success criteria in the classroom

I can create my own learning targets for a standard

☐

☐

☐

There were many components of the course. Please rate each listed component below on how well it helped you to meet the success criteria. *

	Very Helpful	Mostly Helpful	Partially Helpful	Minimally or Not Helpful	Did Not Attend or Complete this Section
Text/Description Pages	<input type="radio"/>	<input type="radio"/>	<input type="radio"/>	<input type="radio"/>	<input type="radio"/>
Quizzes/Matching Activity	<input type="radio"/>	<input type="radio"/>	<input type="radio"/>	<input type="radio"/>	<input type="radio"/>
Google Assignment on Standards, Learning Targets, Language Targets and Success Criteria	<input type="radio"/>	<input type="radio"/>	<input type="radio"/>	<input type="radio"/>	<input type="radio"/>
Content Specific Examples	<input type="radio"/>	<input type="radio"/>	<input type="radio"/>	<input type="radio"/>	<input type="radio"/>

What (if any) feedback would you like to provide about the instructional methods, schedule, presentation format of the professional learning? *

Your answer

Click here to see a sample of the Four Square Results

Click here to see a sample of the PD Reflection Results



Contract Language for DCD's:

On each DCD, teachers will be assigned activities aligned with the Strategic Plan along with the work of the District Professional Learning Instructional Council. Planning for these days will be completed by the end of the year.

This site is intended to help all staff members locate and register for DCD's on 1/28/2022. An assigned activity might be a full-day or a half-day. Please use the table below to see your assigned activities.

Please use the table below to see your assigned activities.

PD Listings by Date/Time

IMPORTANT ANNOUNCEMENTS FOR 21-22 SY PD

In order to be in compliance with ISBE, all live PD (online or in-person) from 9/24 forward will require participants to sign in and out of a session. Participants' IEN's must be included on the sign-in/out forms. [\(Here's how to find your IEN\)](#) If you do not sign in and out of a session, you will not be marked as present and you will not receive your PD hour form. In addition, we are required by ISBE to collect an evaluation form from all participants that receive a PD hour form. All evaluation forms should be completed within 24 hours of the session.

[Online Sign-in/out Procedures \(Video\)](#)
[Finding Courses by Name \(Video\)](#)
[Anytime Courses](#)

Search by Date (use MM-DD-YY Format):

Click on PD Name, Date or Start Time to Sort

PD Name	Date	Start Time	End Time	Enrollment Link
Teacher Appraisal Plan SLD Process: Beginner	11-17-21	02:45 PM	03:45 PM	Click to Enroll
TMP Mentor Quarterly Meetings for 21-22 SY	11-29-21	06:30 AM	07:30 AM	Click to Enroll



Search by Job Title/Position:

Ancillary Sites to Help Educators Find the PD that Will Best Help Their Practice

Blended PD

Asynchronous Learning Followed by an In-Person Session



More Rigorous Asynchronous Learning

Opportunities for application and feedback



LEARNING TARGETS
LANGUAGE TARGETS
SUCCESS CRITERIA

Peer-Led PD

Offline activities to be completed with a group. Allow for application and reflection.

Task Planning



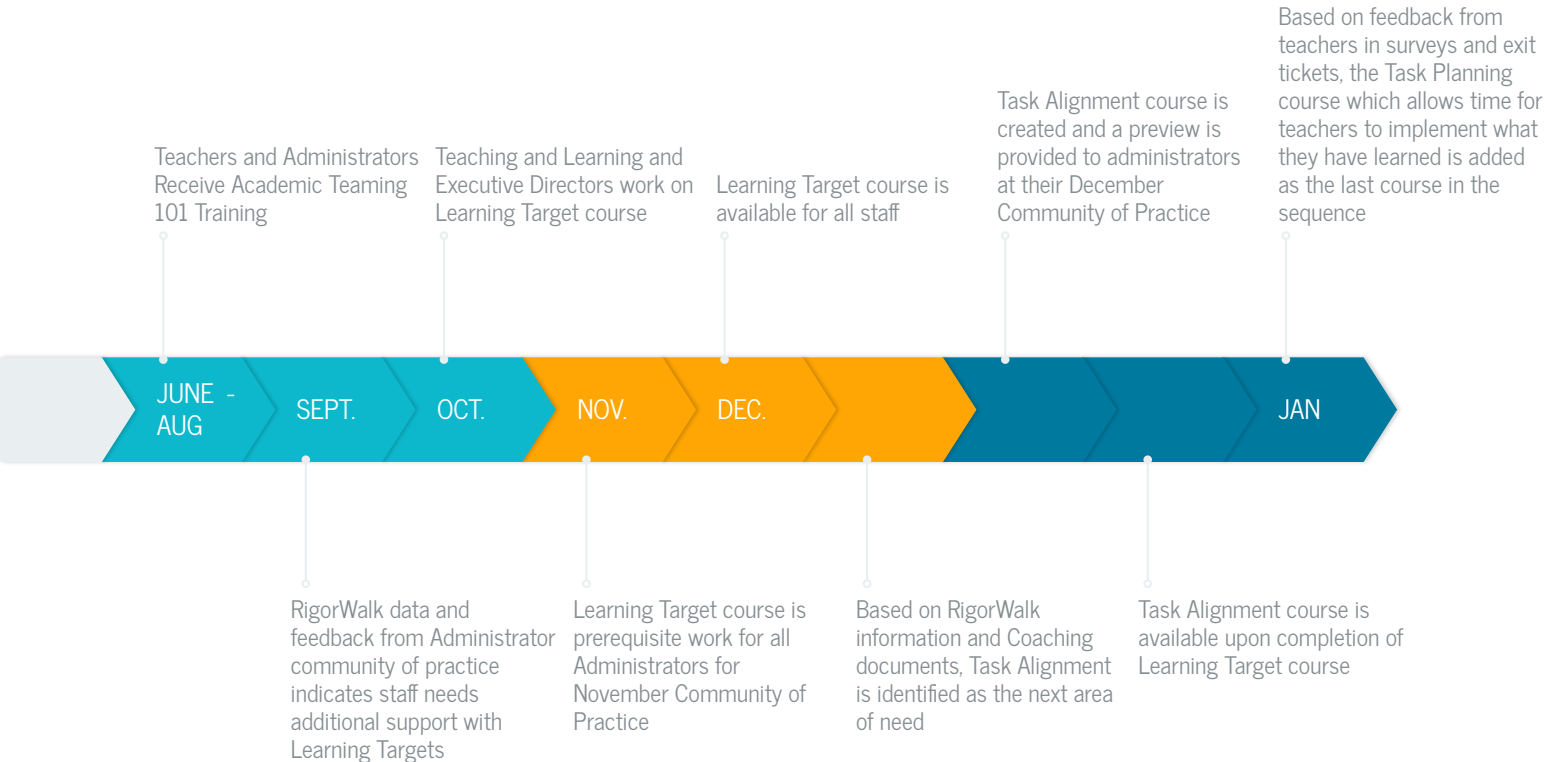
More Exploration of PD Formats

What continues to drive PD offerings?

- Staff input
 - Survey through PD Committee in Fall 2021
 - Feedback from Individual PD Sessions
 - Input from PD Committee
- Instructional Priorities and Needs
 - U-46 Rising Work
 - Administrator Communities of Practice
 - RigorWalk Data



Creation of Target Task Alignment Sequence



PROFESSIONAL DEVELOPMENT

DESIGNED AROUND
SPECIFIC AREAS FROM
RIGORWALK DATA TO
SUPPORT CONTINUED
IMPROVEMENT



WORK IN THE CLASSROOM

IMPLEMENTS
INFORMATION FROM
PROFESSIONAL
DEVELOPMENT

RIGORWALK DATA

IDENTIFIES AREAS OF
WORK IN THE
CLASSROOM THAT
NEED SUPPORT OR ARE
SHOWING GROWTH

Where are we headed?

- Continue to support U-46 Rising through topics and delivery of PD
- Find the right balance between in-person, online, and asynchronous PD
- Continue to leverage technology to provide access for all U-46 educators

