



# School Safety and Culture

John Heiderscheidt  
Director of School Safety and Culture



# Purpose

**The purpose of this presentation is to update the Board of Education on the following:**

1. Aspiration and Measurement
2. Security at School
3. Discipline
4. Staff Training
5. Highlights

# U-46 Strategic Plan – Student Achievement

**Aspiration:** We will educate the whole student by providing an enriched, high quality experience that empowers all graduates to be competitive members of the global society.

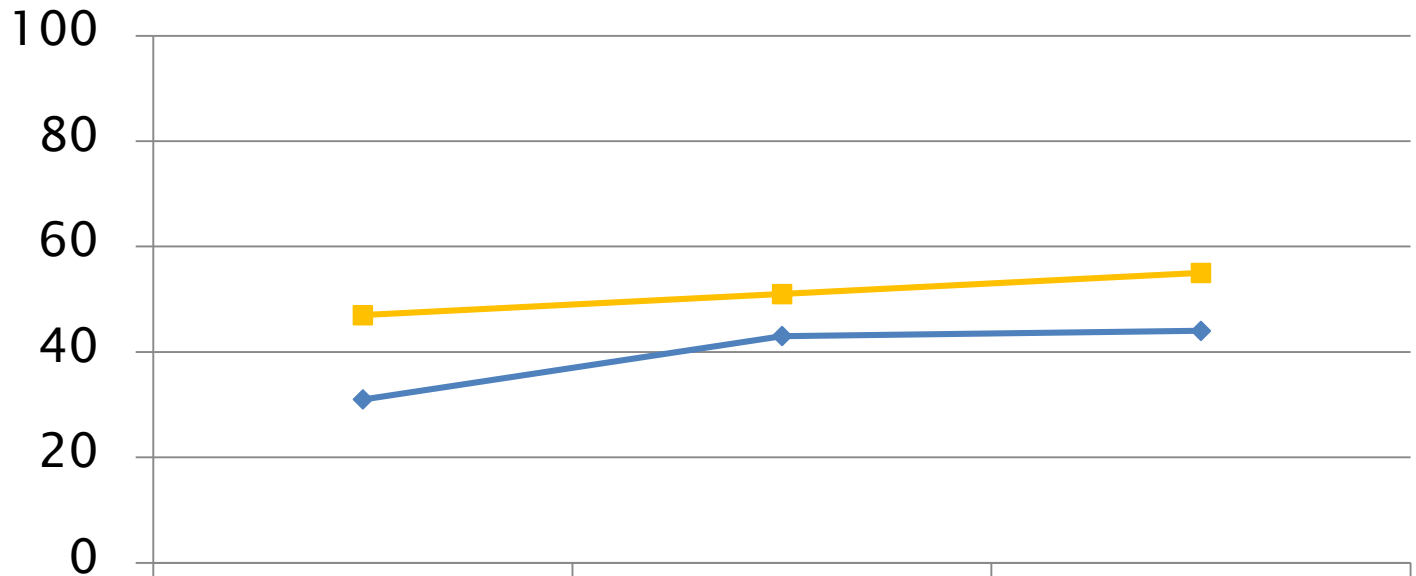
- ▶ **Priority 2:** We will coordinate our efforts to provide a nurturing and safe learning experience and a flexible approach in meeting the academic, social, and emotional needs of each student.
  - **Metric**
    - Increase the percentage of students who feel safe at school
  - **Definition**
    - Increase 5Essentials scores by 4 scale points annually on students who feel safe at school
  - **Source**
    - 5Essentials

# School Safety

## 5 Essentials – Environmental Perceptions

# 5Essentials - Comparing U-46 and Illinois - Safety

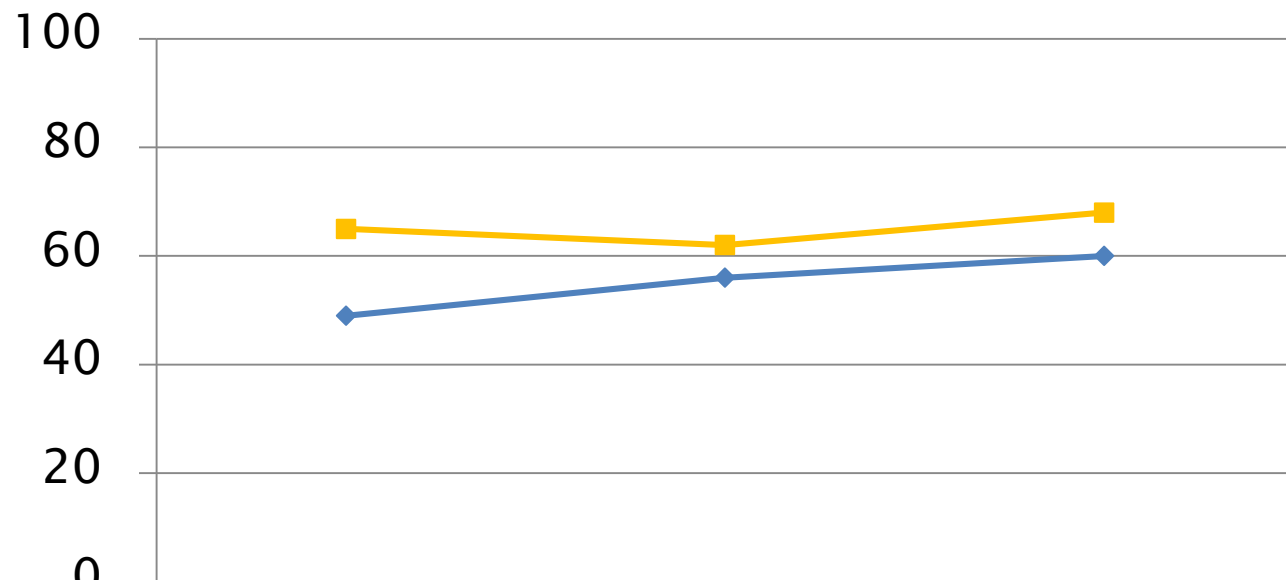
## 5Essentials over time



◆ U-46 Safety	31	43	44
■ IL Safety	47	51	55

# 5Essentials – Comparing U-46 and Illinois – School Safety

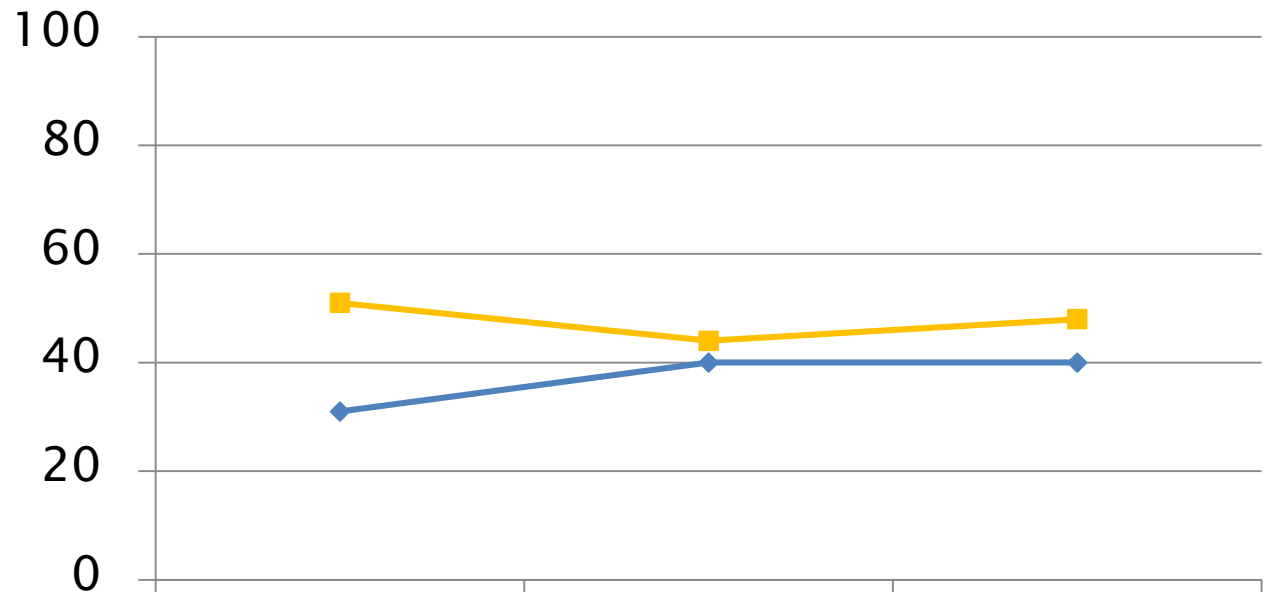
## 5Essentials over time



	2014-15	2015-16	2016-17
◆ U-46 School Safety	49	56	60
■ IL School Safety	65	62	68

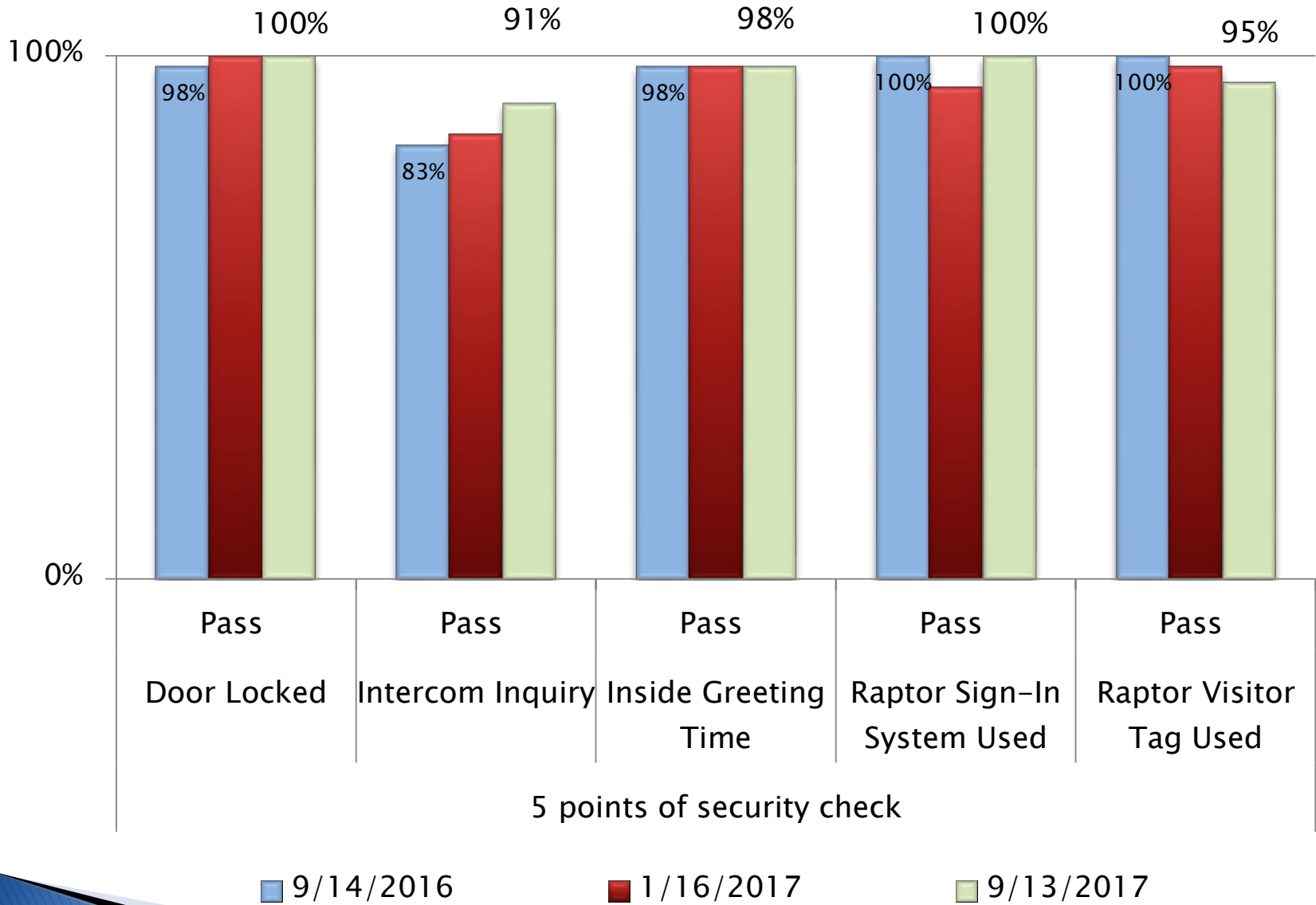
# 5Essentials – Comparing U-46 and Illinois – Teacher Safety

## 5Essentials over time



	2014-15	2015-16	2016-17
U-46 Teacher Safety	31	40	40
IL Teacher Safety	51	44	48

# School Security Check



# Visitor Management System

- ▶ Raptor System
- ▶ In 2016–17 we had 79,000 visitors
- ▶ Checks all visitors against sex offender registration files



# Lockdown Locks

All classrooms, offices and single staff bathrooms

- ▶ Phases 1 and 2 – elementary and middle schools – completed
- ▶ Phase 3 – high schools – pending
- ▶ Phase 4 – administration and operations – future

Hallway lock



Inside room



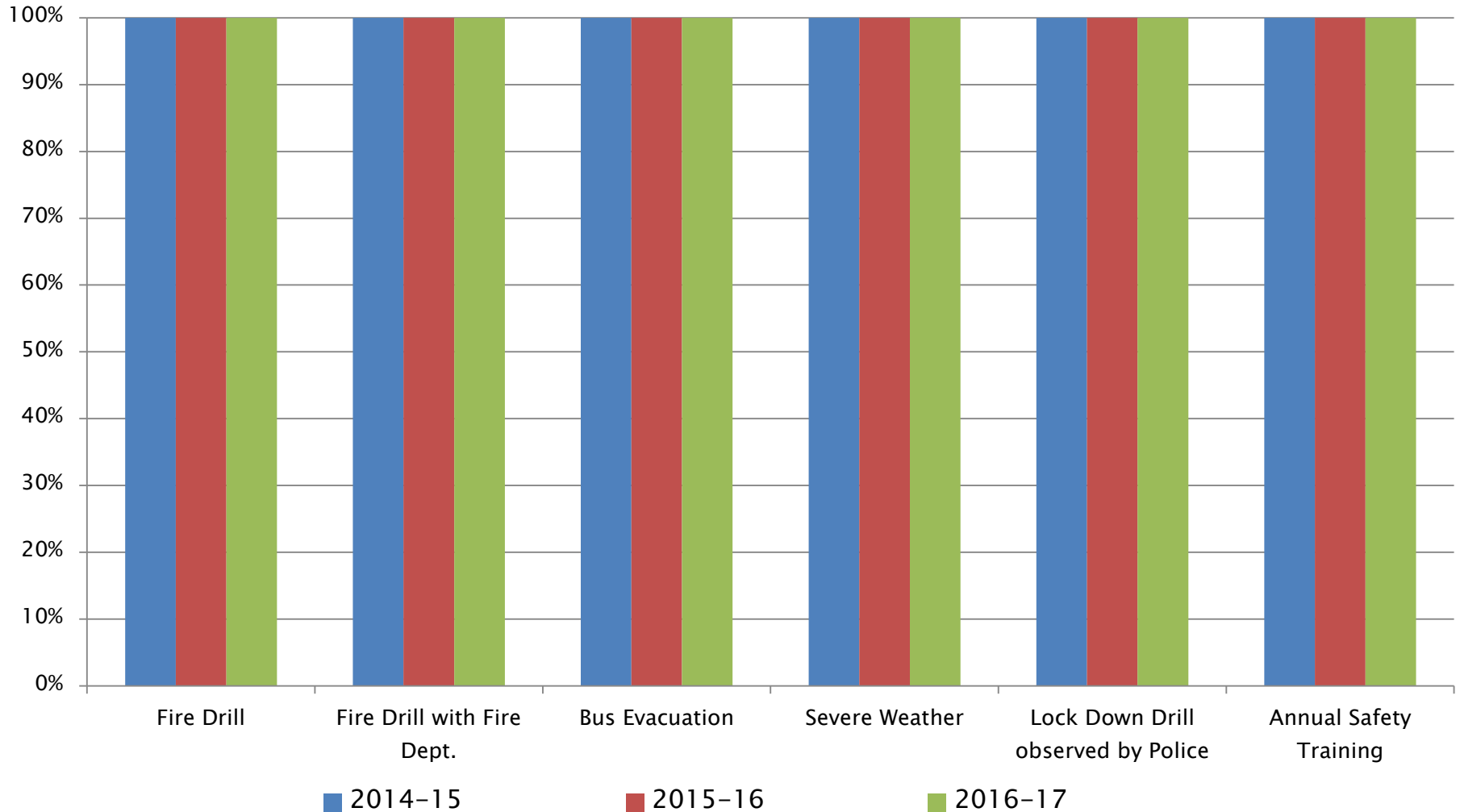
Inside room



Inside room



# Annual School Safety Drills and Training

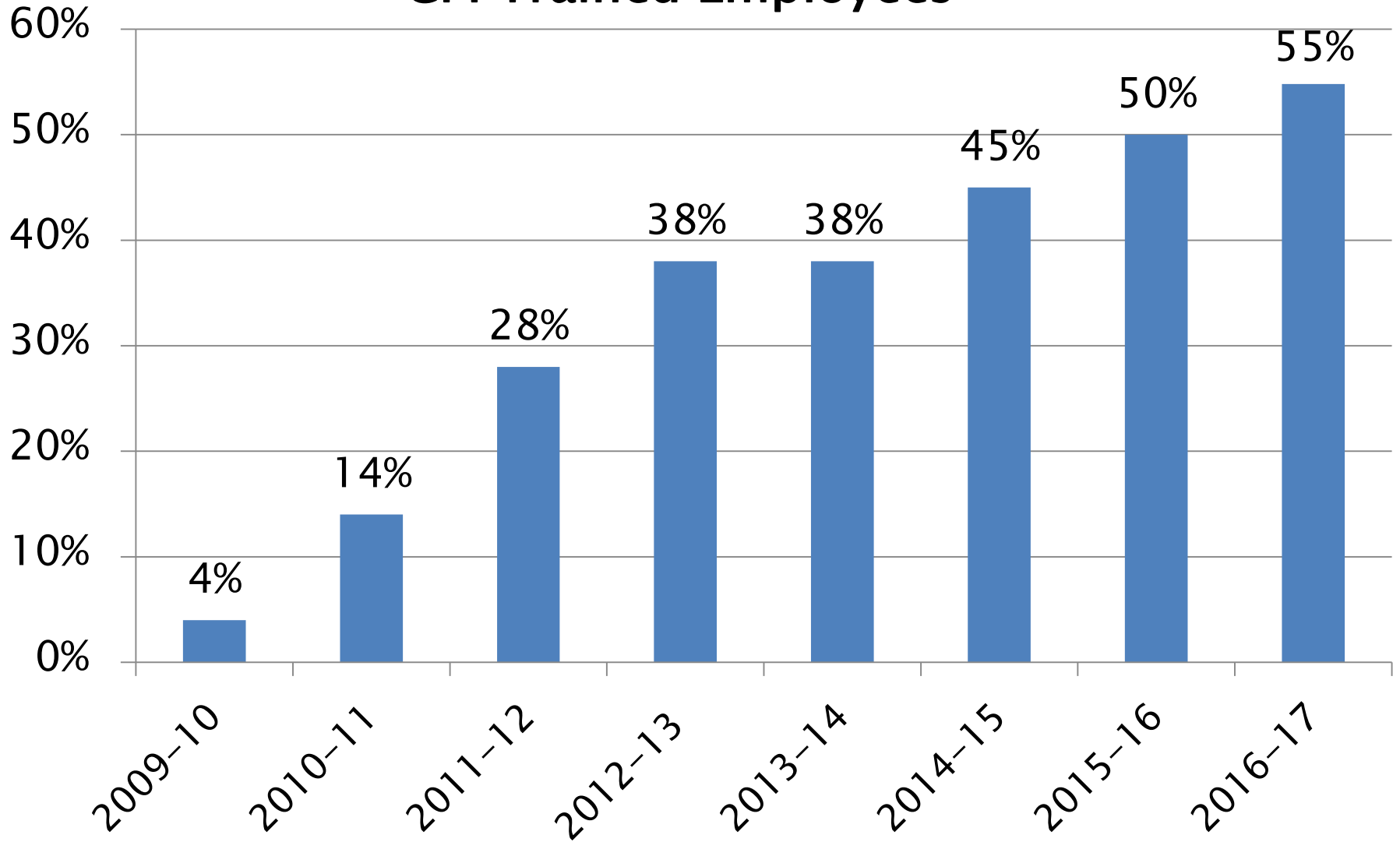


Drill completion required annually by October 15

# Professional Development

- ▶ **Safety and Crisis Management Training:**
  - Conducted annually at each school during a staff meeting
  - Facilitated scenarios to strengthen staff action steps
- ▶ **CPI Response Teams – De-Escalation Teams:**
  - Developed procedures and training plan for schools to form teams to respond to escalated students (BOE Policy 7.252)
- ▶ **Exceptional Needs Room Evacuation Plans:**
  - Developed a procedure with the fire departments and School Safety Advisory Task Force
  - Pending purchase of equipment and training staff

# CPI Trained Employees



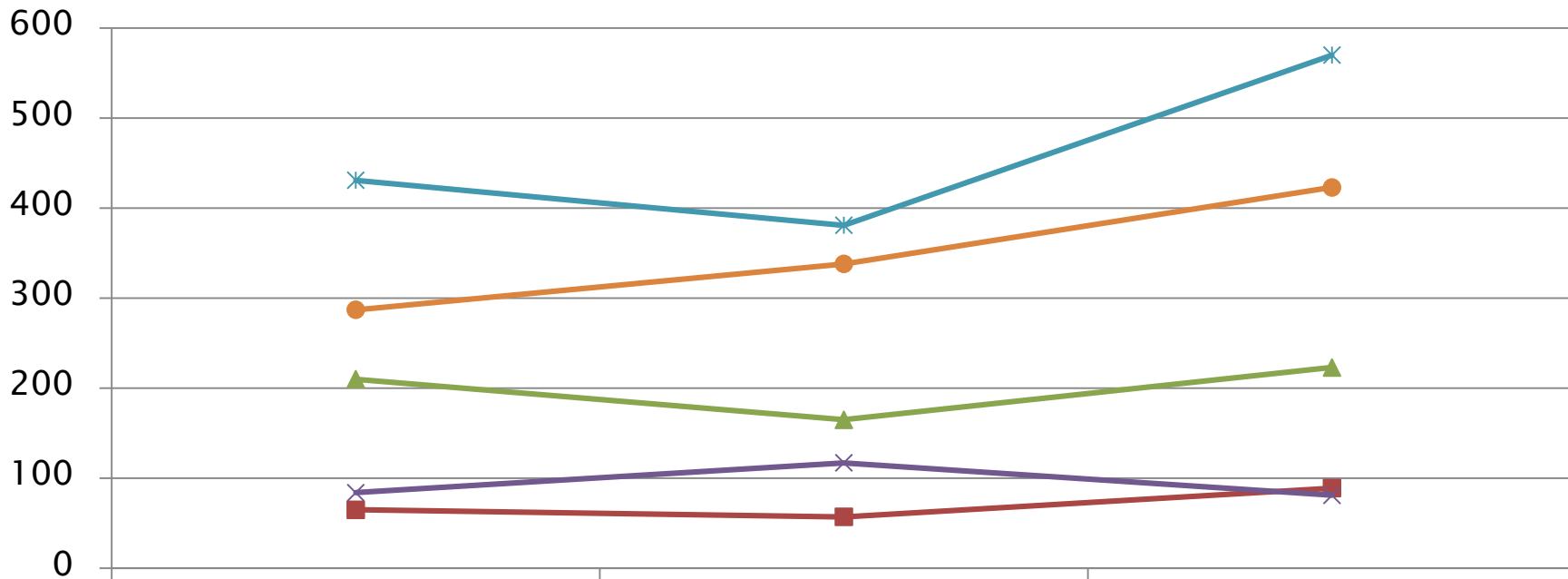
# Safe and Nurturing Environments

**District Safety collaborates with the Coordinator of Student Discipline, Coordinator of Multi-Tiered Systems of Support (MTSS), Principals, Assistant Principals, Deans, School Resource Officers and Dean's Assistants to continuously improve safe school environments.**

# Student Code of Conduct (BOE 7.190)

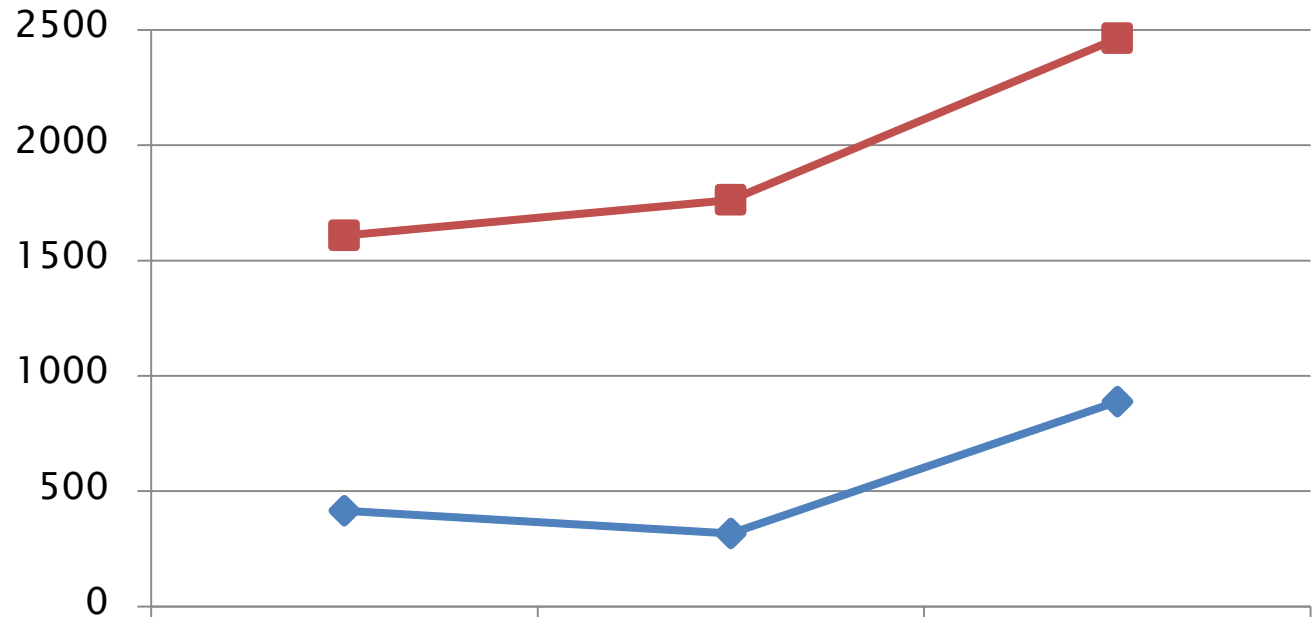
- ▶ Separated from the Handbook
- ▶ Posted online
- ▶ Staff guide to the Student Code of Conduct
- ▶ Discipline means to teach or mentor
  - We seek behavior change from our interventions
- ▶ Transparency, clarity, consistency
- ▶ Citizen's Advisory Council sub-committee involved in reviewing the Student Code of Conduct

# School Offenses – All Schools



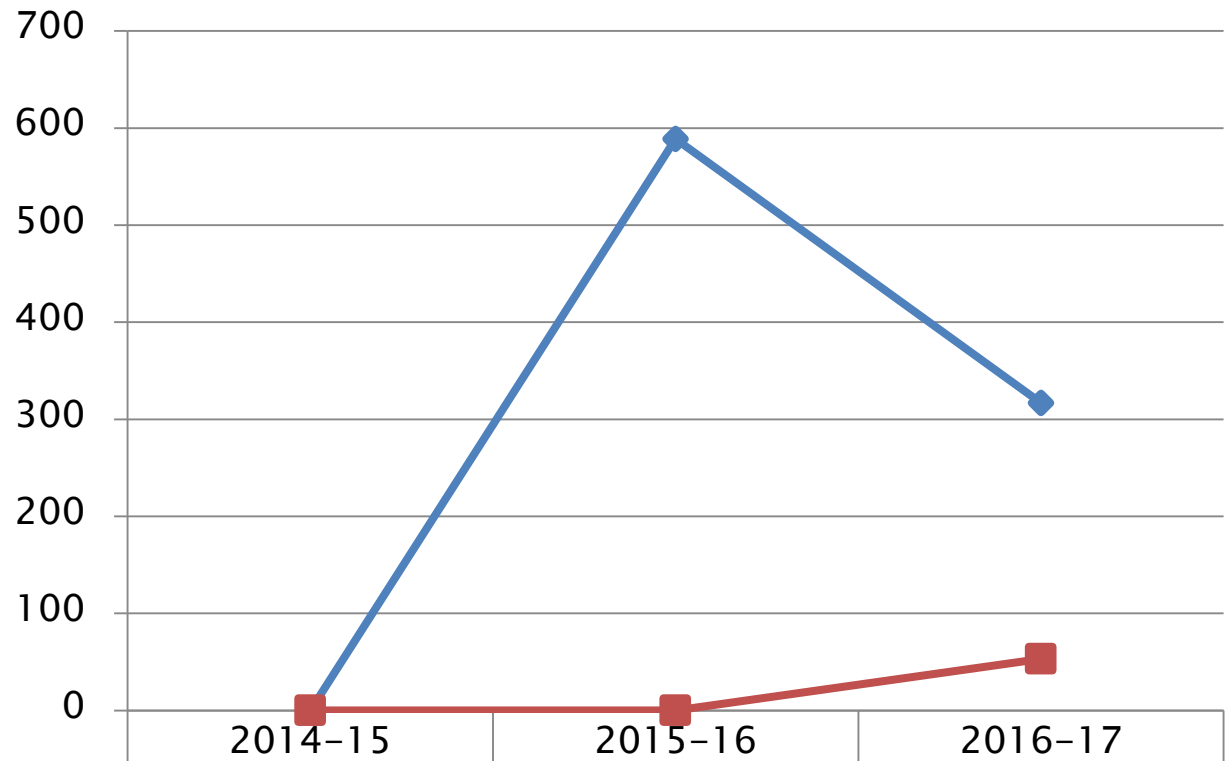
	2014-2015	2015-2016	2016-2017
■ Weapon	65	57	89
▲ Drug	210	165	223
✕ Gang	84	117	81
✱ Bullying	431	381	570
● Threat	287	338	423

# School Offenses – All Schools



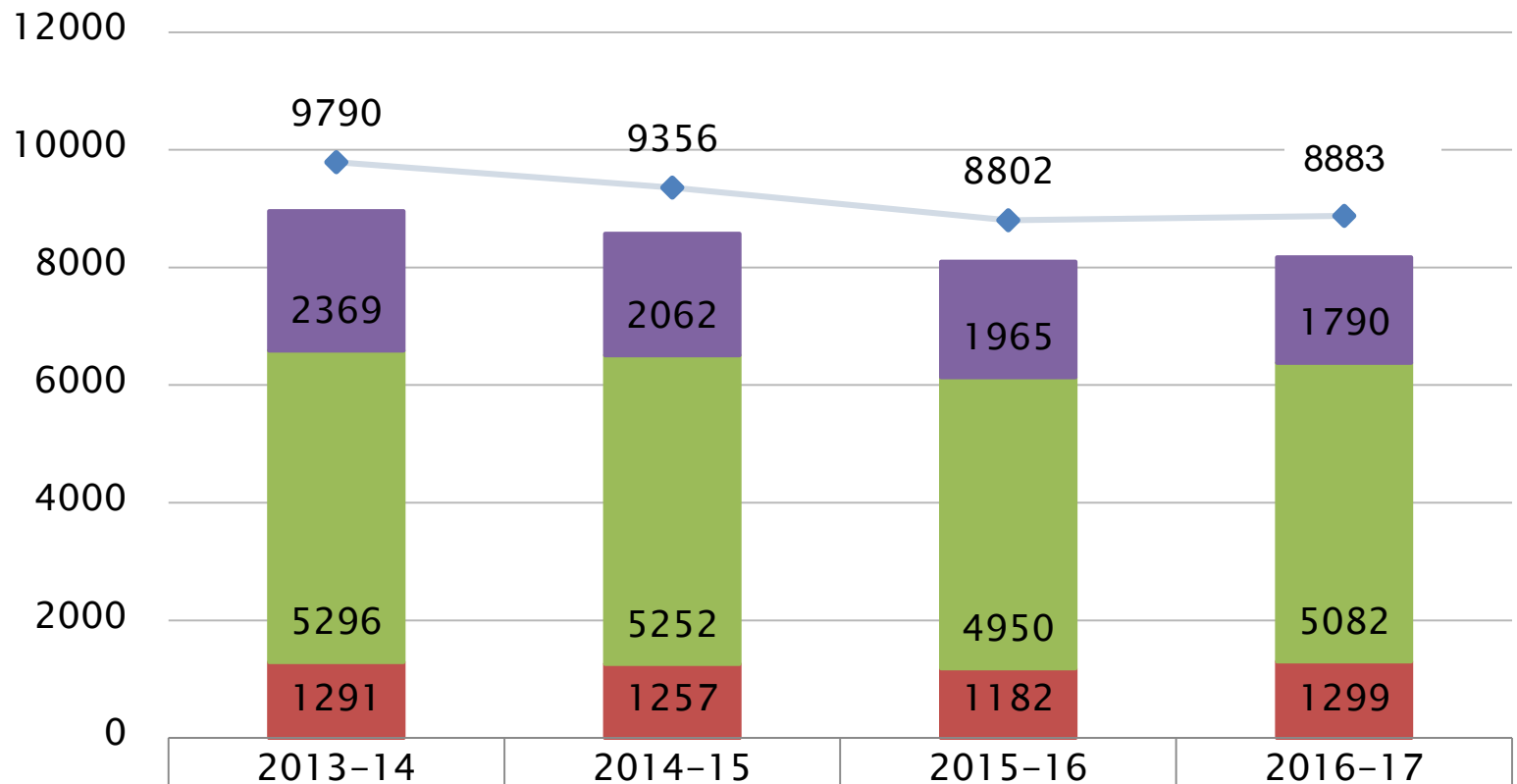
	2014-15	2015-16	2016-17
Physical- Inappropriate physical Contact	415	317	889
Physical-Physical Aggression	1608	1763	2463

# School Offenses – All Schools



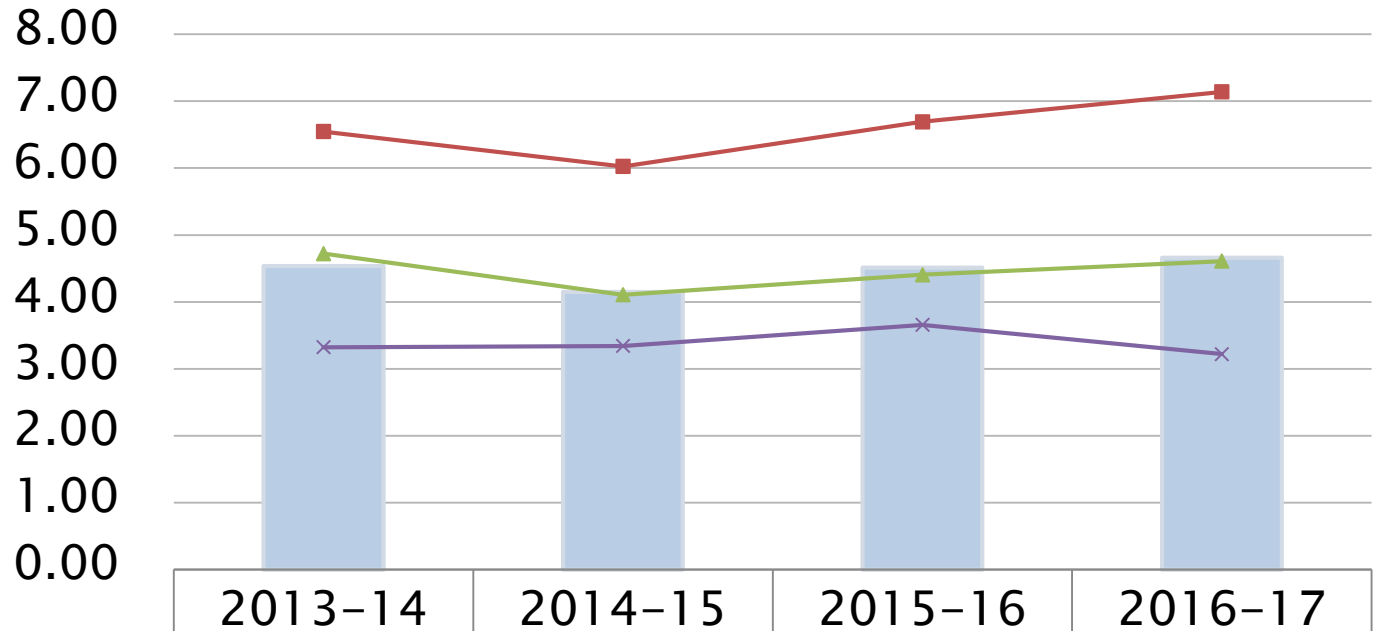
Physical-Fighting/student - no injuries	0	589	317
Physical-Fighting/student - injuries	0	0	53

## District – Number of Unique Students Receiving Referrals



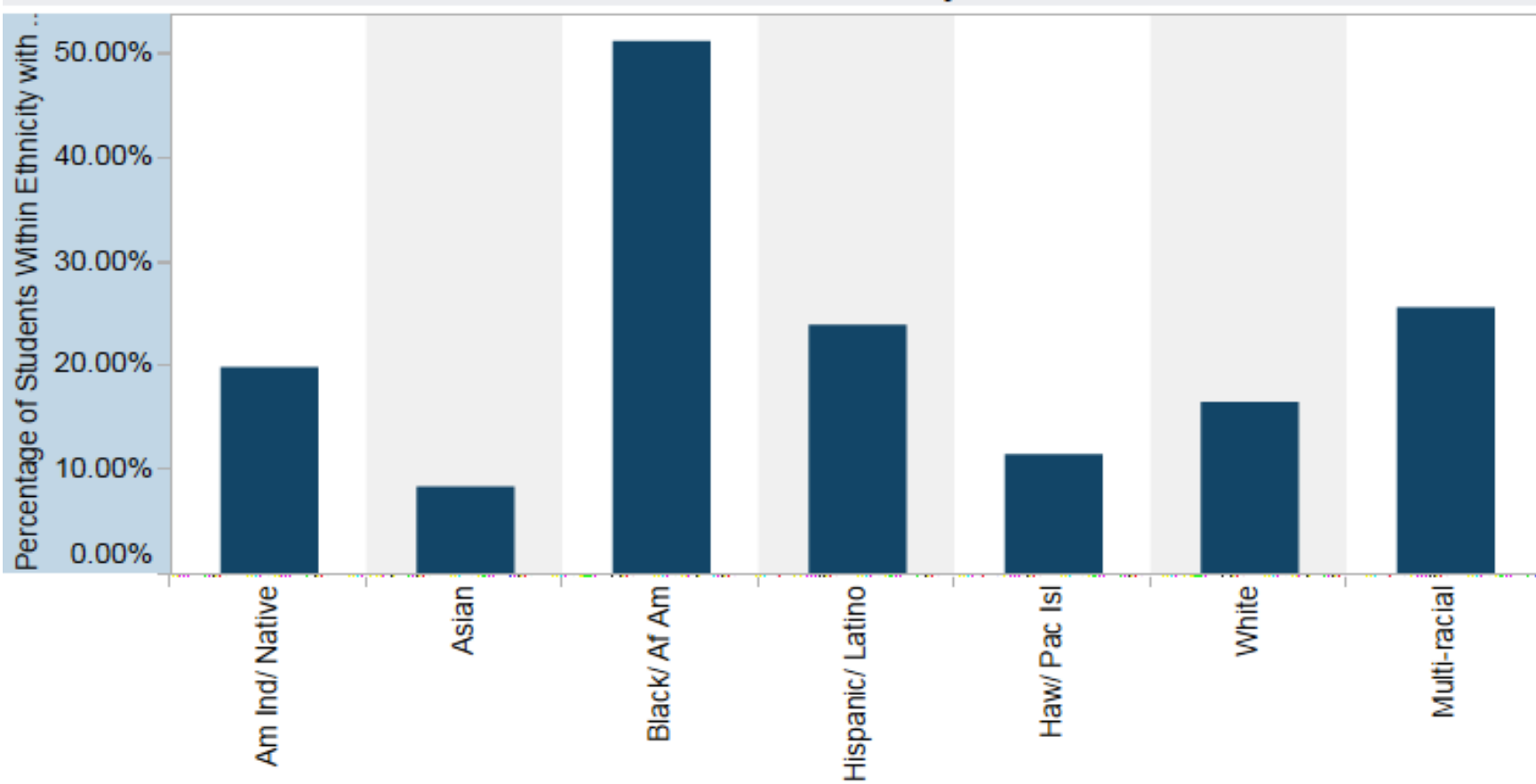
White	2369	2062	1965	1790
Hispanic	5296	5252	4950	5082
African American	1291	1257	1182	1299
All	9790	9356	8802	8883

## District – The ratio of Referrals per Unique Student by Ethnicity



■ All	4.54	4.15	4.51	4.66
■ African American	6.55	6.03	6.69	7.14
▲ Hispanic	4.72	4.11	4.41	4.61
× White	3.32	3.34	3.66	3.22

# % of Students Within Each Ethnicity with Referrals



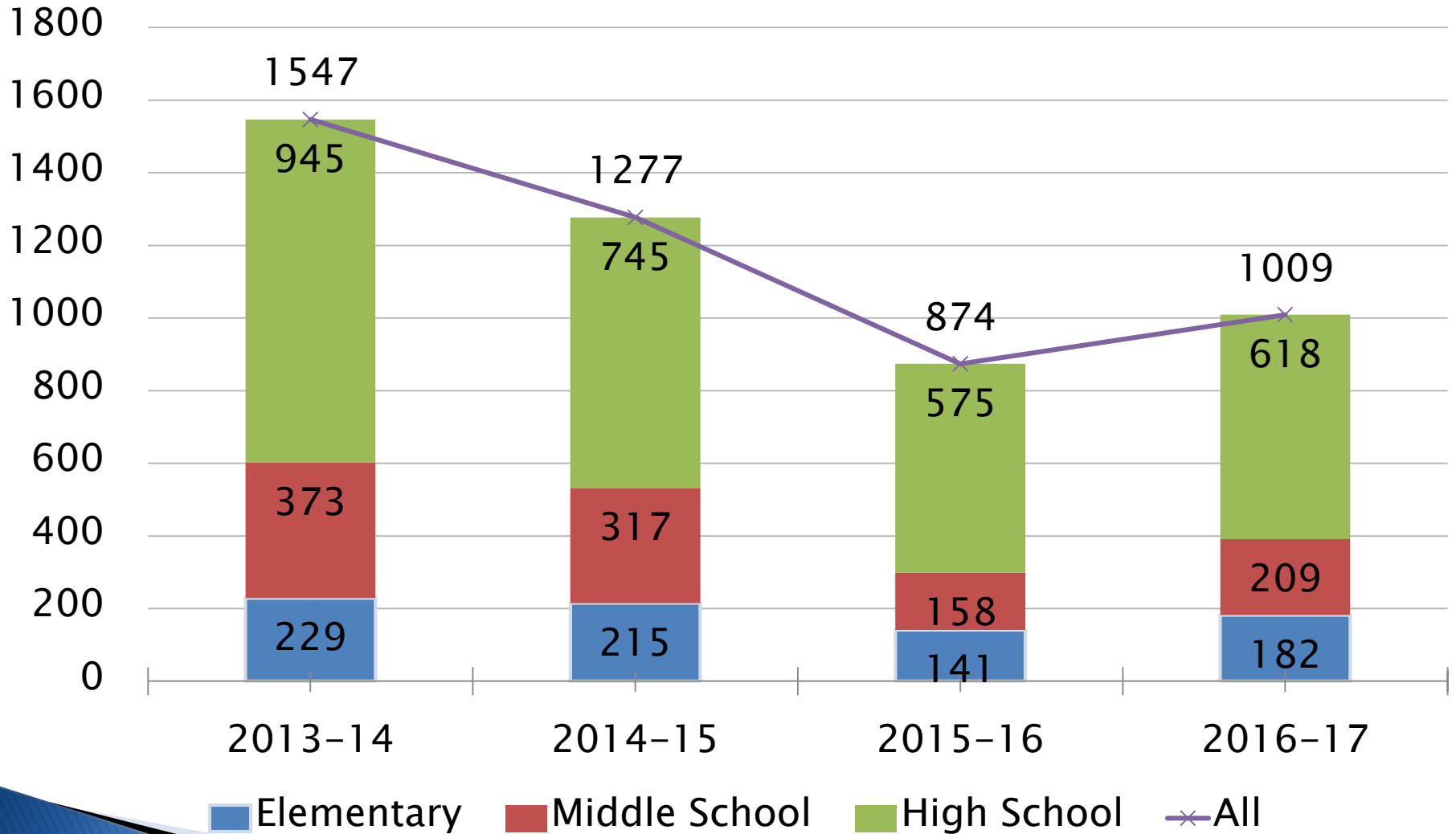
**School**  
All

**School Ye**  
 2017-1  
 2016-1  
 2015-1  
 2014-1

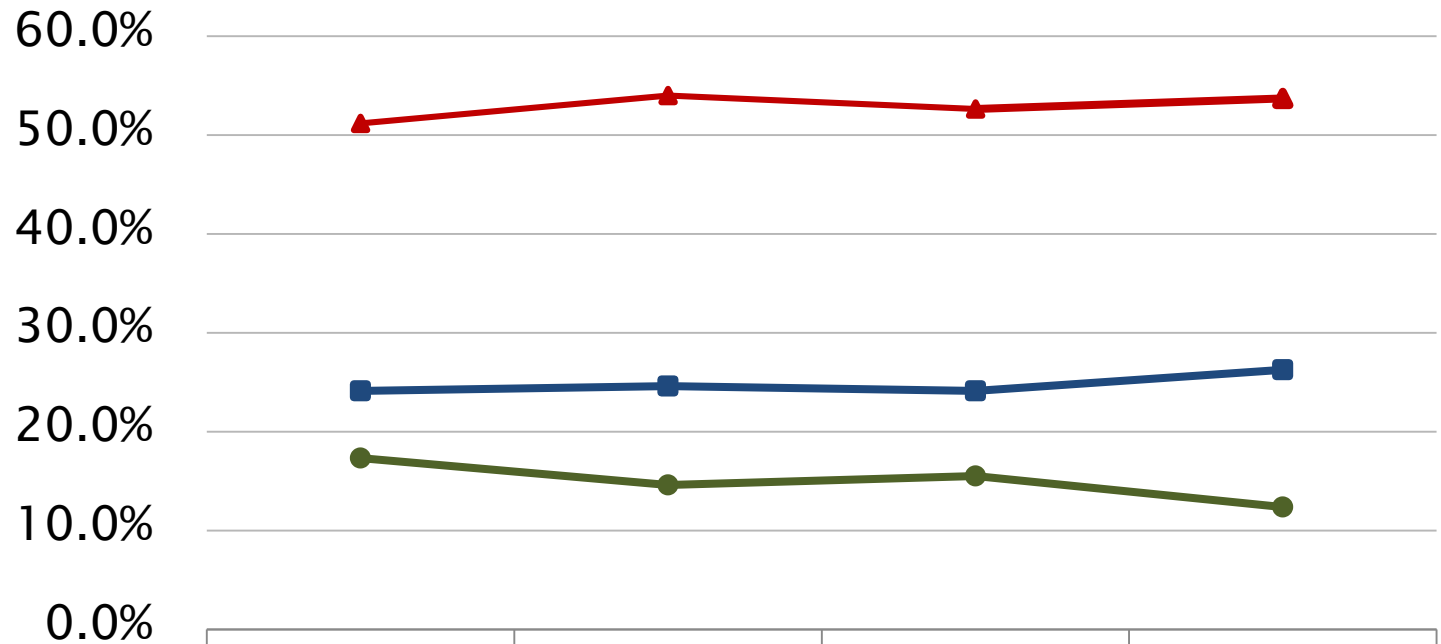
Ethnicity	Number of Enrolled Students	Number of Students with Refe..	Percentage of Students Withi..
Am Ind/ Native	339	67	19.76%
Asian	3,302	280	8.48%
Black/ Af Am	2,535	1,300	51.28%
Hispanic/ Latino	21,286	5,084	23.88%
Haw/ Pac Isl	26	3	11.54%
White	10,810	1,793	16.59%
Multi-racial	1,394	356	25.54%
<b>Grand Total</b>	<b>39,692</b>	<b>8,883</b>	<b>22.38%</b>

Data Updated: 9/13/2017 5:07:36 AM

# District – Number of Unique Students Receiving Out-of-School Suspensions

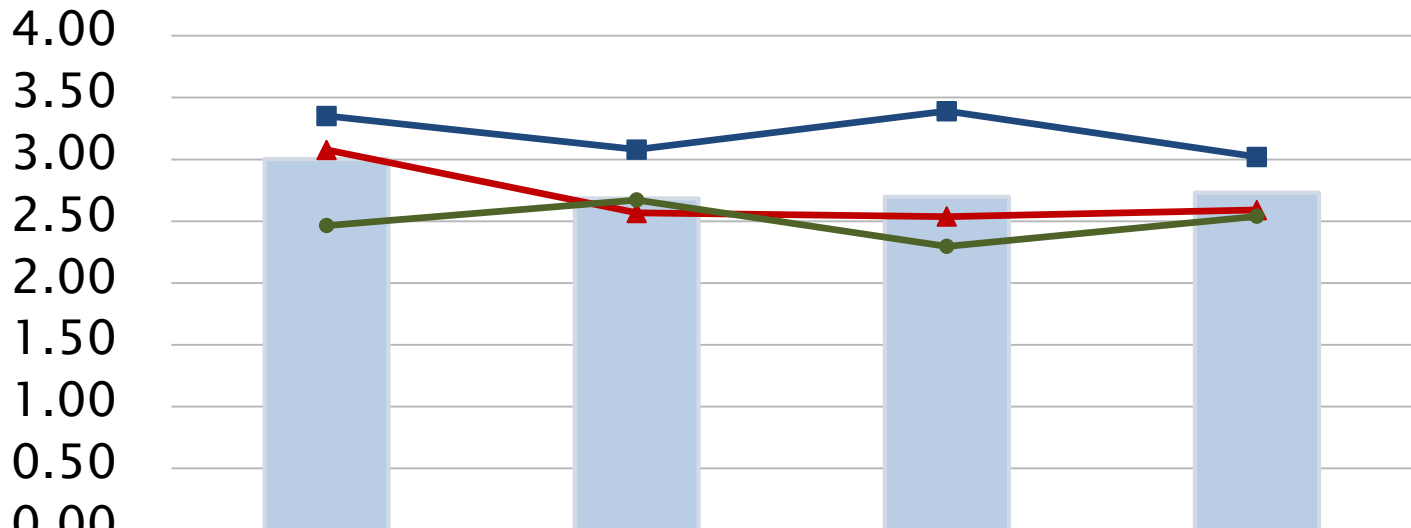


## District– Percentage of unique students receiving Out-of-School Suspensions by Ethnicity



	2013-14	2014-15	2015-16	2016-17
■ African American	24.1%	24.6%	24.1%	26.3%
▲ Hispanic	51.20%	54.01%	52.64%	53.72%
● White	17.33%	14.62%	15.52%	12.39%

# District – The ratio of Out-of-School Suspension days per unique student by Ethnicity



	2013-14	2014-15	2015-16	2016-17
All	3.00	2.69	2.70	2.73
African American	3.35	3.08	3.39	3.02
Hispanic	3.08	2.57	2.54	2.59
White	2.46	2.67	2.30	2.54

# Community Partners in Safety

- ▶ **School Safety Advisory Task Force**
  - Debrief incidents
  - Table top scenarios
  - Review safety, security, and emergency procedures
- ▶ **ACE Trauma Informed Care A-Team**
  - Tactical plan implemented
  - Pilot program started at 5 schools forming Resiliency Teams
  - Developing plans to include community agencies
  - 4 annual professional learning community events for Resiliency Team Support
- ▶ **Bartlett Volunteer Fire Association**
  - Grant awarded to pilot our digital radio system with base unit radios in school offices – Installed summer 2017

# Highlights

- ▶ Alternative programs suspension rates
  - Out-of-school suspensions rates near zero
- ▶ Bullying (BOE 7.193)
  - Social Emotional Response Team (SERT) school social workers investigations and support for schools
- ▶ Transitioning students (BOE 7.190)
  - SERT Assigned to students transitioning between programs
- ▶ DCFS, Community Agencies and students in high risk
  - SERT assigned to high risk DCFS students
- ▶ Crisis response
  - Safety team responded to 17 crisis situations

# Next Steps

- ▶ **Lockdown locks**
  - Completion of Phase 3 – High Schools
- ▶ **Visitor/Volunteer Management System**
  - Private alerts
- ▶ **Safety Measurement**
  - Develop work plans with schools
- ▶ **5Essentials**
  - Develop an action plan to increase student and staff perceptions of feeling safe at school
- ▶ **Student Code of Conduct**
  - Strengthen the review process

