



# CTE & ACADEMY AUDIT UPDATES SUPPORTING EDUCATIONAL PATHWAYS

---

Presentation to the BOE June 4, 2018

Dr. Terri Lozier

Dr. Suzanne Johnson

Dr. Trisha Shrode

Ms. Kinasha Brown

Ms. April Wells

Mr. Chris Boden





# U46 STRATEGIC PLAN



Increase the percentage of students who are college and career ready.

# Definition of U-46 College & Career Readiness

- Students who graduate from high school:
  - Follow a rigorous course of study.
  - Possess the skills or habits of mind that enable them to apply their knowledge in a range of situations.
  - Are able to take entry-level, credit bearing postsecondary courses without the need for remediation.
  - Have career exploration opportunities, obtain industry credentials, and/or articulated/dual credit.



# College & Career Readiness Metrics Defined

## High School

### U-46 Definition # 1:

Increase unique high school students enrolled in AP courses by 2% annually or attain 30% enrollment overall

### U-46 Definition # 2:

Increase students graduating within 5 years by 3% annually or obtain 99% overall

### U-46 Definition # 3:

Increase high school students receiving industry credentials by 5% annually or attain 25% overall

## Middle School

### U-46 Definition # 1:

Increase percentage of students CCR in reading and math using PSAT.

### U-46 Definition # 2:

Increase the number of students algebra ready using 8<sup>th</sup> grade MAP score.

### U-46 Definition # 3:

Increase the number of students who complete career exploration and career projects. (beginning 2018 -2019 school year)

# ESSA College and Career Readiness Indicators



## College and Career Ready

- ▶ GPA: 2.8/4.0
- ▶ 95% Attendance in high school junior and senior year

## AND

- ▶ College and Career Pathway Endorsement under Postsecondary Workforce Readiness Act

## OR *All of the following:*

- ▶ One Academic Indicator in each of ELA and Math during the Junior/Senior Year (or Algebra II at any time)
- ▶ Identify a Career Area of Interest by the end of the Sophomore Year
- ▶ Three Career Ready Indicators during the Junior/Senior Year



# ESSA Academic Indicators



## English Language Arts

- ▶ Advanced Placement Courses (A, B or C)
- ▶ ELA AP Exam (3+)
- ▶ Dual Credit English Course (A, B or C)
- ▶ Minimum SAT Subject Score of Evidence-Based Reading and Writing: 540
- ▶ Minimum ACT Subject Scores of English 18, Reading 22

## Math

- ▶ Advanced Placement Courses (A, B or C)
- ▶ Math AP Exam (3+)
- ▶ Dual Credit Math Course (A, B or C)
- ▶ Algebra II (A, B, or C)
- ▶ Minimum SAT Subject Score of Math: 540 + Math Senior Year
- ▶ Minimum ACT Subject Scores of Math 22 + Math Senior Year



# ESSA College and Career Readiness Indicators



## **Career Indicators:**

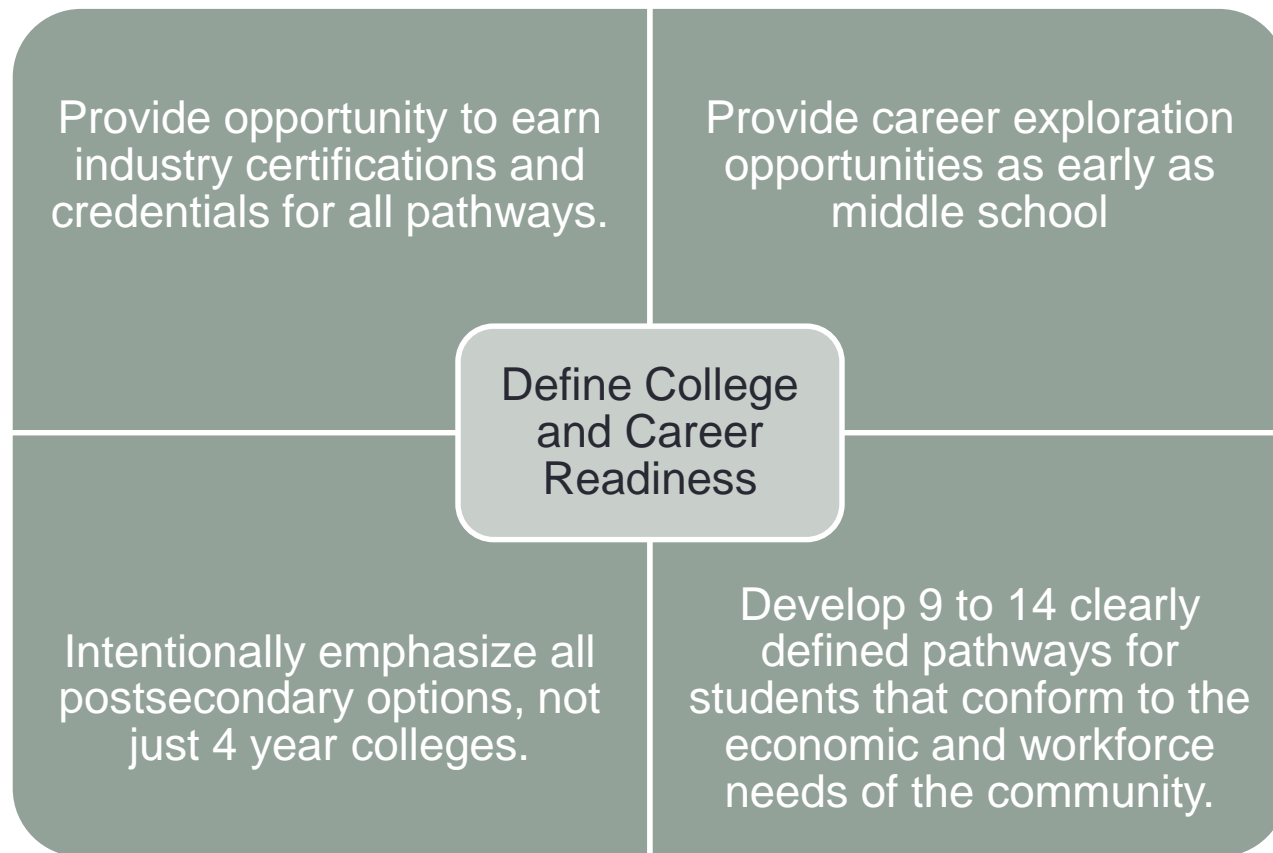
- ▶ Career Development Experience
- ▶ Industry Credential
- ▶ Military Service or Armed Services Vocational Aptitude Battery (ASVAB) score of 31 or higher
- ▶ Dual Credit Career Pathway Course (college credit earned)
- ▶ Completion of a Program of Study
- ▶ Attaining and maintaining consistent employment for a minimum of 12 months
- ▶ Consecutive summer employment
- ▶ 25 hours of community service
- ▶ Two or more organized co-curricular activities

Illinois Every Student  
Succeeds Act (ESSA)  
College & Career Readiness  
Indicator (CCRI)

*As adopted at April ISBE  
meeting*



# CTE Audit Recommendations



# Industry Credentials

## Manufacturing Programs

- Automotive programs are NATEF certified
- Precision manufacturing programs are NIMS certified
- Welding program is AWS certified

## Other Programs

- Healthcare Science program has CNA certification
- Elgin High School has Pro Start certification for Culinary Arts



# Current Academy Audit

## Findings: Students



More invested in  
their learning

More willing to  
take on  
academic  
challenges

Better  
relationships with  
their teachers

Twice as likely to  
indicate they felt  
they belonged to  
the school

More likely to  
participate in  
extra-curricular  
activities



# Current Academy Audit findings: Teachers



Close-knit community creates a comradery between students that fosters academic excellence.

Lack of updated resources, equipment, and space.

Lack of consistent curriculum integration and recent changes to student selection criteria

Need to increase collaboration time

Concerns about academic consistency with the lack of an integrated curricular approach

Concerns regarding same course work offered in other schools





# Next Steps from ESSA and Audit Findings



- Revamp current academies to Magnet School status.
- Provide dedicated time for career exploration.
- Replicate smaller learning communities for ALL students.
- Offer students multiple graduation pathways through a specified scope and sequence of coursework.
- Align CTE programs to allow more opportunities for industry credentials.

# Career Academies / Educational Pathways Proposed Rollout Plan

## ▶ **18-19 School Year:**

- ▶ Roll up of Dual Language to high school
- ▶ Implementation of Naviance in middle school
- ▶ EXPO Sept. 12, 2018 at Sears Centre for all 2,600 8th graders
- ▶ Pilot local internships

## ▶ **19-20 School Year**

- ▶ Every 7<sup>th</sup> & 8<sup>th</sup> grade student has completed career exploration opportunities
- ▶ Potential pilot of one educational pathway or one school in Career Academies

## ▶ **20-21 School Year**

- ▶ Every high school freshman enrolled in a Career Academy

# Middle School Preparation

## 7th Grade

- ▶ All students take a career exploration class
- ▶ All students take elective classes aligned to Career Academies

## 8th Grade

- ▶ Year-round: All students take elective classes aligned to Career Academies
- ▶ September: All students attend the annual career and curriculum expo
- ▶ In January: all eighth grade students choose a Career Academy to try out

# High School Plan

## 9th Grade

- ▶ All students take a one-semester overview class in their chosen Career Academy and select an Educational Pathway
- ▶ If a student does not like his/her academy choice, opportunity to switch academies

## 10th Grade

- ▶ All students begin a one-year course specific to the Educational Pathway in the Career Academy

## 11th & 12th Grade

- ▶ Pathway classes focus on skills, job shadow or work experience



# Current Academies to become Magnet Schools



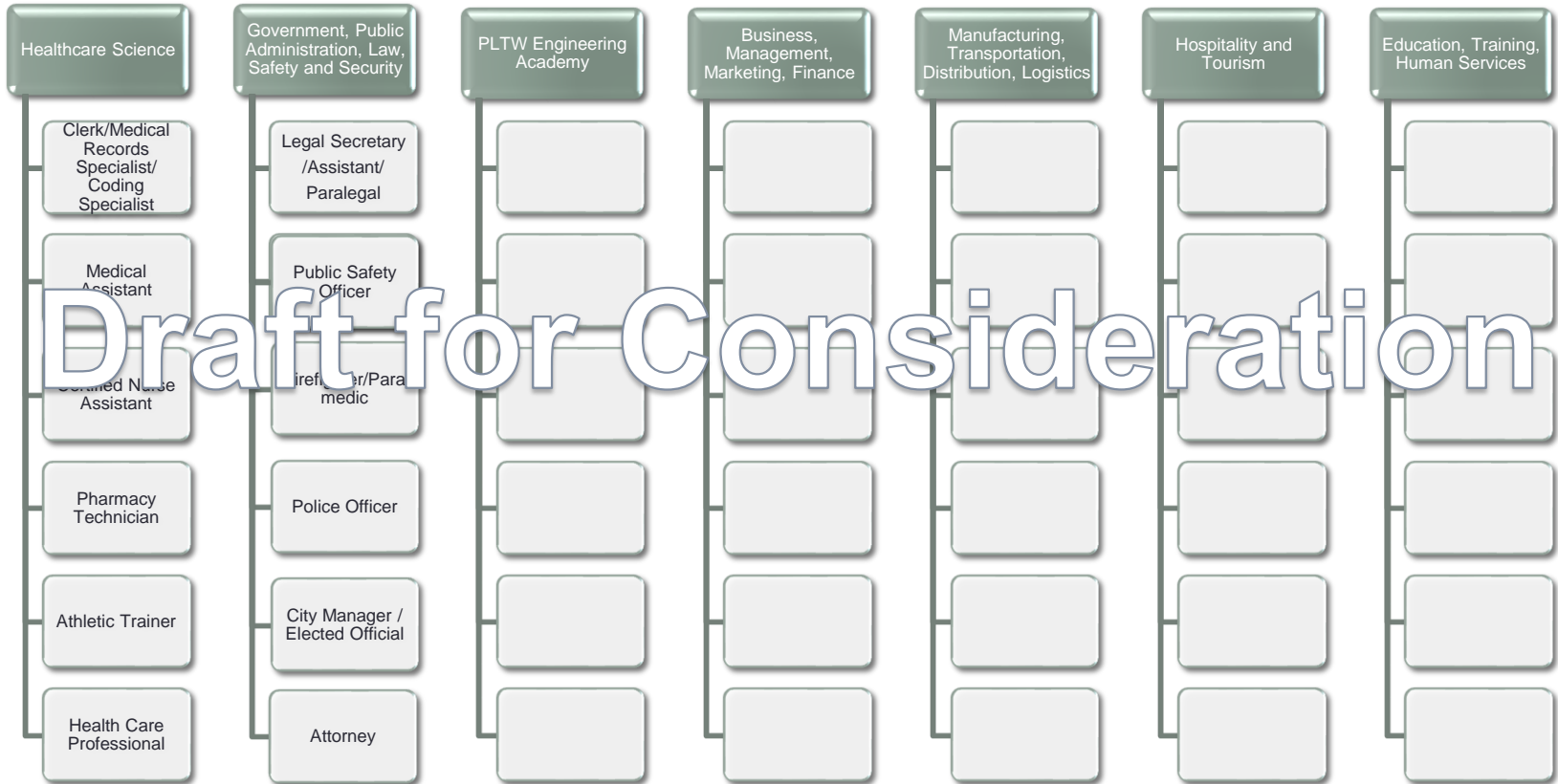
- **BHS** – contracted with Hanover Research to find the best Science, Technology, Engineering, Math (STEM) programming other than Project Lead the Way (PLTW)
- **EHS** – International Baccalaureate (IB) application submitted
- **LHS** – Examine current Visual and Performing Arts Academy (VPAA) structure
- **SEHS** – BEACON Academy of Media & Digital Arts (written in Magnet School format)
- **SHS** – World Languages and International Studies Academy (WLISA) - Examine current format

# Considerations for Potential Academy Clusters

- PLTW Engineering Academy at all five high schools (to consider STEAM).
- Business Management & Administration, Marketing, & Finance Academy, Information Technology at four high schools.
- Manufacturing, Transportation, Distribution, & Logistics Academy at BHS (autos), EHS (welding - Regional /autos), SEHS (precision mfg. & autos), SHS (precision mfg. & diesel).
- Government, Public Administration, & Safety Academy to include ROTC at two to three high schools.
- Hospitality & Tourism Academy at two to three high schools.
- Education, Training, & Human Services Academy at four high schools.
- Health Care Sciences Academy at three high schools.

# Multiple Educational Pathways will exist within each Career Academy

**Career Academy**



Draft for Consideration

# Potential Pathways within a Healthcare Science Academy

- Health Unit Coordinator/  
Clerk/Medical Records Specialist/  
Coding Specialist
- Medical Assistant
- Certified Nurse Assistant
- Pharmacy Technician
- Athletic Trainer/Personal Training
- Healthcare Professional Pathway  
to include:
  - Doctor, Dentist, Advance Practice  
Nurse, Physician Assistant, etc.





# Potential Pathways in a Government, Public Administration, Law, Safety & Security



- Legal Secretary/Assistant/Paralegal
- Public Safety Officer
- Firefighter/Paramedic
- Police Officer
- Govt., Public Administration, Law, Safety & Security Professional Pathway to include:
  - Attorney, City Manager, Investigator, Elected Official, Policy Analyst, etc.



# All Students will have option to take electives:

## Sample Course Progression

Class Periods	Freshman Year	Sophomore Year	Junior Year	Senior Year
1	English	English	English	English
2	Algebra	Geometry	Algebra II	Elective
3	Biology	Chemistry	Elective	Elective
4	Elective	Elective	US History	Econ & Civics
5	Elective	Elective	Elective	Elective
6	LUNCH	LUNCH	LUNCH	LUNCH
7	Band or Orchestra or Elective	Band or Orchestra or Elective	Band or Orchestra or Elective	Band or Orchestra or Elective
8	Physical Education	Physical Education/Health	Physical Education	Physical Education

# College Bound/Professional Schedule Comparison

Typical College Bound Schedule

Class Periods	Freshman Year	Sophomore Year	Junior Year	Senior Year
1	English	English	English	English
2	Math	Math	Math	Math
3	Science	Science	Science	Science
4	Social Studies	Social Studies	Social Studies	Social Studies
5	World Language	World Language	World Language	World Language
6	LUNCH	LUNCH	LUNCH	LUNCH
7	Band/Orchestra /Elective	7	Band/Orchestra /Elective	Band/Orchestra /Elective
8	Physical Education	Physical Education/Health	Physical Education	Physical Education

Professional Pathway in Career Academy

Class Periods	Freshman Year	Sophomore Year	Junior Year	Senior Year
1	English	English	English	English
2	Math	Math	Math	Math
3	Science	Science	Science	Science
4	Social Studies	Social Studies	Social Studies	Social Studies
5	World Language	World Language	World Language	World Language
6	LUNCH	LUNCH	LUNCH	LUNCH
8	Physical Education	Physical Education/Health	Physical Education	Physical Education

# Possible Courses in a Healthcare Science Professional Pathway

Class Periods	Freshman Year	Sophomore Year	Junior Year	Senior Year
1	Honors English	Honors English	AP Language	AP Literature
2	Algebra	Geometry	Algebra 2	Pre-Calculus
3	Honors Biology	Honors Chemistry	AP Physics 1	AP Biology, AP Chemistry or AP Physics
4	AP Human Geography	AP World History	AP US History	AP Macroeconomics & AP Government
5	World language	World Language	Honors World Language	AP World Language
6	LUNCH	LUNCH	LUNCH	LUNCH
7	Band or Orchestra or Principles of Biomedical Science	Band or Orchestra or Human Body Systems	Band or Orchestra or Medical Interventions	Band or Orchestra or Biomedical Innovations
8	Physical Education	Physical Education/Health	Physical Education	Physical Education

Alternative Core Math Progression



# Possible Courses in a Govt., Public Administration, Law, Safety & Security Professional Pathway

Class Periods	Freshman Year	Sophomore Year	Junior Year	Senior Year
1	Freshman English	Sophomore English	Junior English	Senior English
2	Honors Algebra 2	Honors Pre-Calculus	AP Calculus A or AP Statistics	AP Calculus B/C or AP Statistics
3	Honors Biology	Honors Chemistry	AP Physics 1	AP Biology or AP Chemistry or AP Environmental
4	AP Human Geography	AP World History	AP US History	AP Macroeconomics & AP Government
5	World Language	World Language	Honors World Language	AP World Language
6	LUNCH	LUNCH	LUNCH	LUNCH
7	Band or Orchestra or Intro to Law/Law 2	Band or Orchestra or AP Psychology	Band or Orchestra or AP European Hx	Band or Orchestra or Intro to Sociology
8	Physical Education	Physical Education/Health	Physical Education	Physical Education

Alternative Core ELA progression

# Community Involvement



Presented to CAC on May 3. Presentation and more than 100 FAQ's posted to U-46 website.

Several roundtable discussions with local business leaders

Informational Sessions for parents on May 30 (South Elgin HS), May 31 (Elgin HS), June 7 (Bartlett HS)

Ford Next Generation Learning readiness audit conducted in February 2018



Students will have the option to attend their home school

Students will be able to access fine arts programs and other electives

Transportation will be provided if students select a Career Academy not offered at their home school

Students will be able to change Academy choice during high school

A photograph of a diverse group of young students in a classroom. Several boys are visible, some wearing red polo shirts and others in blue or white shirts. Many of the students have their hands raised high in the air, suggesting an interactive learning environment where they are encouraged to ask questions or share their thoughts. The text "Questions?/Preguntas?" is overlaid in the center of the image in a large, white, sans-serif font. The background shows a typical classroom setting with a black chair and some equipment.

Questions?/Preguntas?