



Superintendent's Report to the Board of Trustees

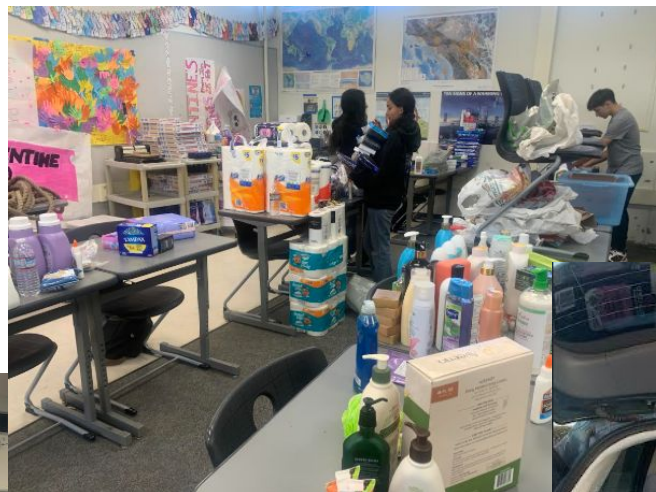
January 23, 2025
Virginia Castro, Superintendent



*Peace Parade & MLK Celebration photos
from Green, Twain, and Mitchell*

Superintendent's Office

Rogers Students in
Leadership and
AVID Classes
sponsored
donation drive for
families impacted
by LA Fires



Superintendent's Office

February 1st

Board Self-Evaluation and Superintendent's Mid-Year
Check in

Breakfast at 8:30

Meeting 9:00am - 12:00pm

BOARD OF TRUSTEES MEETING





Retirement Incentive Deadline

Tomorrow!
January 24th
4 PM

*Please contact the HR department before the deadline



LESD One-Day Hiring Fair

RAP Program Leader Summer Positions

Sub Custodian

Sub Food Services Assistant

Sub Instructional Assistant

March 4th

*Informational Flyer and Social Media Postings

Human Resources

Current LESD Employment Opportunities

Certificated	Classified
Early Ed. Coordinator	Accounting Technician Night Custodian Instructional Assistant

Please Apply @ EDJOIN.ORG
OR
@ www.lawndalesd.net "Career" Tab



Business- Rogers Admin Building

Fire Alarm testing this weekend

Moving in next week

Occupancy starting Feb. 3rd

Ribbon Cutting



Business- Governor's Budget Proposal

- **The California economy is continuing to grow with mixed signals for the road ahead**
 - **Inflation is persistent and the slowing of interest rate reductions by the Federal Reserve is impacting the state's housing market**
 - **With increased economic uncertainty, there are notable risks to Governor Newsom's 2025-26 State Budget and economic forecast**
- **The Governor's Budget projects a \$17 billion surplus and healthy reserves**
 - **The Governor presents a balanced budget that assumes steady, stable national growth**
 - **One of the greatest risks to the California economy and the Governor's budget assumptions is the state's vulnerability to the impacts of tariffs and changes in immigration policy**



Business- Governor's Budget Proposal



LOCAL CONTROL FUNDING FORMULA (LCFF)

LCFF Entitlements for School Districts and Charters

Grade Span	2024-25 Base Grant per ADA ¹	2.43% COLA	2025-26 Base Grant per ADA
TK-3	\$10,025	\$244	\$10,269
4-6	\$10,177	\$247	\$10,424
7-8	\$10,478	\$255	\$10,733
9-12	\$12,144	\$295	\$12,439

¹Average daily attendance

COST-OF-LIVING ADJUSTMENT (COLA)

2024-25	2025-26	2026-27	2027-28	2028-29
1.07%	2.43%	3.52%	3.63%	3.49%

Business- Governor's Budget Proposal



NEW DISCRETIONARY GRANT

- \$1.8 billion is proposed for a new Student Support and Professional Development Block Grant
- The grant is intended to include broad discretion for use of the funds
- More details, particularly the allocation methodology, will be available at the end of January



ADDITIONAL FUNDS PROPOSED

- Restores \$378.6 million for the Learning Recovery Emergency Block Grant
- \$1.5 billion for the transitional kindergarten ratio requirement, including the lower 10:1 student-to-adult ratio that is required starting in 2025-26
- \$435 million for the Expanded Learning Opportunities Program to support reducing the threshold for Rate 1 local educational agencies from 75% unduplicated pupil percentage (UPP) to 55% UPP

Educational Services

**Enrollment
Season is
around the
Corner!**

6th Grade
Parent Meetings



Educational Services

Informational Sessions for 2025-26 School Year

TK & Kindergarten

School	Date	Time
Billy Mitchell Elementary School	Wednesday, March 5, 2025	9:00 AM - 10:00 AM
FDR Elementary School	Thursday, February 27, 2025	8:45 AM - 9:30 AM
Lucille J. Smith Elementary	Thursday, February 20, 2025	9:00 AM - 10:00 AM
Mark Twain Elementary School	Friday, February 7, 2025	9:00 AM - 10:00 AM
William Anderson Elementary	Wednesday, February 26, 2025	9:00 AM - 10:00 AM
William Green Elementary	Thursday, March 6, 2025	9:00 AM - 10:00 AM

Spanish Dual Immersion Program

School	Date	Time
Billy Mitchell Elementary School (K-3)	Friday, January 31, 2025	9:15 AM - 11:00 AM
Mark Twain Elementary School (TK-5)	Tuesday, January 28, 2025	9:00 AM - 11:00 AM
Will Rogers Middle School (6-8)	Wednesday, February 5, 2025	3:30 PM - 4:30 PM



Educational Services



Data-Driven Practices

Ongoing Process of:

Data Analysis Days at
each school site

+

District Analysis

