

LAWNDALE

ELEMENTARY SCHOOL DISTRICT

Lawndale Early Education Programs - Carson

LESD Board Meeting

January 23rd 2025

Sharon Azmon

Tia Belt-Brown, Ed. D.



District Goals



01 Increase Academic Achievement

Ensure all students learn through access to high quality actions and services that increase academic achievement and civic, career, and college readiness.



02 Ensure Access & Equity

Provide high quality actions and services to eliminate barriers to student access to required and desired areas of study.



03 Improve Parent & Student Engagement

Ensure all schools have safe, welcoming, healthy and inspiring climates for all students and families, so that all students are behaviorally and academically engaged in school and ready to learn.



04 Provide 21st Century Learning Environments

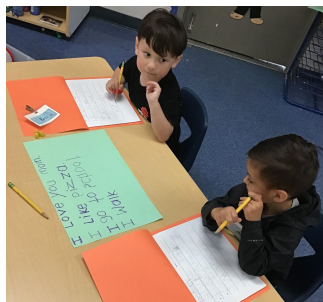
Invest in optimal learning environments that enhance student learning and ensure safety.



District goal 1: Increase Academic Achievement



High Scope/QSLA



Our Programs

- Anderson, Carson, Green, Mitchell, & Twain - AM/PM
- Full day program @ Carson, Mitchell
- We serve three & four year olds
- Staff has over 20 years of experience

Learning Environment

- We serve families within the Lawndale service area and neighboring communities
- Defined work spaces & centers
- Daily routine

Supporting our Families

- Inclusive Practices

Curriculum and Progress Monitoring

- High Scope
- QRIS/QSLA

Current Enrollment 2024-2025

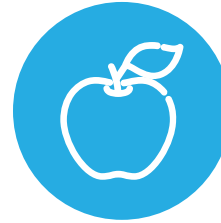
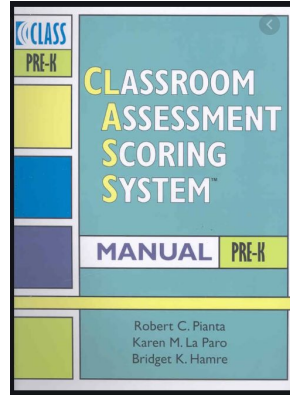


<u>Site</u>	<u>AM Session</u>	<u>PM Session</u>	<u>Full Day</u>	<u>Dual Language</u>	<u>SPED(IEP /SPEECH)</u>
Anderson	16 Students	10	-	10	1
Carson	14	13	15	10	4
Green	15	10	-	7	1
Mitchell	15	11	14	13	
Twain	21	8	-	6	3

We have 9 students with Exceptional Needs with 18 in the referral process

Total of 162 students enrolled

District goal 2: Ensure Access and Equity



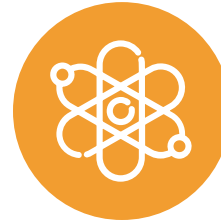
Step one

Initial Screening: Administer the ASQ upon child's enrollment & review results



Step two

Fall & Spring Desired Results Developmental Profile assessments are given to all students



Step three

The CLASS tool is utilized daily to improve child/teacher interactions



District goal 3: Improve Parent & Student Engagement



Resource Teacher

Actively participates and coordinates preschool events, leads professional development, and supports classes



Class coverage & support

Ensures classrooms have the appropriate adult:child ratio & assists teachers with all classroom needs



Parent Meetings

Monthly classroom meetings with parents. Topic vary based on parent interest

District goal 3: Improve Parent & Student Engagement



Community Liaison

Assist families with communication, Parent Square, and community resources



Parent Advisory Committee

Collaborations between Preschool and parents on a variety of school issues, activities, and services.



Family Engagements

- ESMOA
- Fall/winter/spring/EOY engagement
- Father's Tool Kits
- Loved Ones Picnic

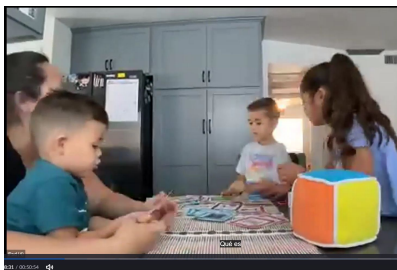
Parent Workshops and school events

Parent Zoom Workshops

LAWNDALE STATE PRESCHOOL PARENT WORKSHOP #2

Join us for our second zoom event
with Emily Stewart

"Building Math Experiences into
the Home Environment"



Positive Solutions Parent Workshops

FREE PARENTING SESSIONS

DESIGNED FOR PARENTS OF PRESCHOOL AND TK AGE STUDENTS



Positive Solutions for Families (PSF) provides evidence-based information and strategies that can help parents and caregivers promote positive and effective methods which in turn will help children's social and emotional development.

SESSION DATES

Session 1: Making the connection - Building positive relationships with children and the power of positive encouragement
Wednesday January 22nd 2025 3 - 4pm

Session 2: Keeping It Positive - Learn how to use playful and positive interactions to strengthen connection and manage challenging behavior
Wednesday February 5th 2025 3 - 4pm

Session 3: Behavior Has Meaning - Become a behavior detective by practicing ways to determine the meaning of behavior and what influences it
Wednesday February 19th, 2025 3 - 4pm

Session 4: The Power of Routines - Discuss how to set up successful routines and transitions through use of preventive strategies
Wednesday March 5th, 2025 3 - 4pm

Session 5: Teach Me What To Do! - Teaching emotions and feelings while promoting anger management and problem-solving skills
Wednesday March 12th, 2025 3 - 4pm

Session 6: Responding With Purpose - Discuss how we can respond (in a positive way that works!) when challenging behaviors occur
Wednesday March 19th, 2025 3 - 4pm

Session 7: Putting it All Together With a Plan - Review past sessions and strategies while discussing best practices on prevention, teaching new skills, and responses to challenging behavior. Leave with a personalized plan for your child's behaviors
Wednesday March 26th, 2025 3 - 4pm

TO RSVP PLEASE
SCAN QR CODE



Upcoming special events

- Career Week
- Read Across America
- Week of the Young Child
- Lawndale Parade
- Literacy Night at the Lawndale Library

Data Informed Practices

Parent Surveys

- Youth Programs
- Developmental milestones
 - monthly parent newsletters



Employee Survey

- 85.7% of staff wanted more information on behavioral intervention
- Professional development & corresponding materials are purchased to support student based interest
(Kimochis were provided to teachers as a resource)



ASQ

- Parents and caretakers complete ASQ 2 & 3 upon entering the school year



LEAP and Early Start

LESD Early Education Special Education Supports



Early Start



Our Youngest Learners

- 18 months to 3 years old
- Deaf and Hard of Hearing - 2 Classrooms
- Orthopedically Impaired/Medically Fragile - 2 Classrooms

Representing our

SWSELPA

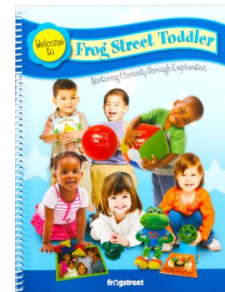
- Children from our 12 Districts
- Home Based Services
- Center Based Services

Supporting our Families

- Individualized Family Service Plan
- Ongoing Services

Curriculum and Progress Monitoring

- Frog Street
- Desired Results Developmental Profile (DRDP)
- IFSP Progress Monitoring - team review



LEAP Lawndale Early Advantage Preschool

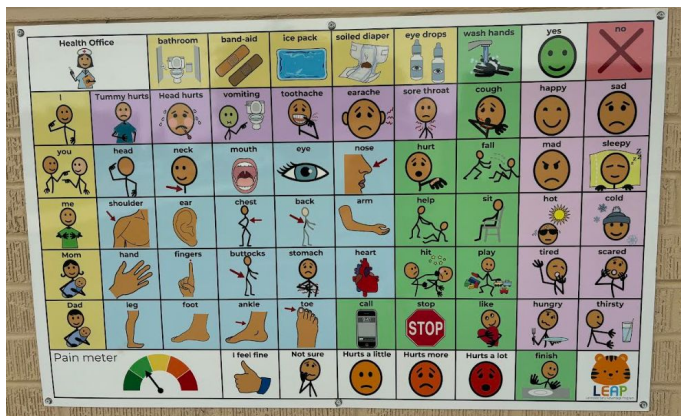


LEAP supports preschool age students with IEPs who require specialized academic instruction in a structured and supportive program

Ongoing program enrollment based on child's 3rd birthday enrollment dependent on child qualifying for IEP and program needs at age

- Direct referral prior to child's 3rd birthday from Westside Regional Center
- Request from Lawndale Parent/Guardian
- Collaboration/MTSS w/ State Preschool for Observation
- Child Find Obligation

LEAP Supporting all Learners



Social Emotional, Physical, Cognitive & Language Development

- Creative Curriculum -Project Based Investigations
Accommodated to support student needs

Learning Environment

- Developmentally Appropriate
- Language Rich
- Visuals and Sensory Supports throughout
- Flexible Seating

Daily Routine

- Consistency
- Social Skills
- Dynamic Centers
- Teaching Self-regulation & independence

Progress Monitoring

- Student's IEP goals and objectives
- Desired Results Developmental Profile (DRDP)



LEAP



Collaboration with California Early Childhood Special Education Network (CalECSE) division of CDE Progress on Least Restrictive Indicators = Greater Inclusion

- Lawndale has made significant gains 2022/23 -Intensive review to 2023/24 - Targeted review

CDE Proactive Target Training

- 2024/25 identified as one of a few Districts who are within 5% of meeting the Indicator 6 (Pre-K Least Restrictive Environment, LRE)



Inclusive Co-Taught Model (est. 2022/23)

- Increased Peer Partners
- Team Approach
- Program Data Dives and Ongoing Review
- Supports all Learners

Partnership with State Preschool

- Collaboration with State Preschool
- Resource Supports to Students
- Set Aside seats

Multi Tiered Systems of Support

- LEAP staff, State Preschool staff, District SPED, District BCBA working together to identify supportive structures across programs to benefit student needs

Transition Support Preschool to TK/K

- Providing pathways of support to successfully transition students from LEAP to TK/K

LEAP



Family Engagements & Supports

Monthly events with families

- Loteria
- Fall Event / Halloween
- Winter Concert
- DRDP Parent Meeting
- Upcoming - Storytime with Teacher

Ready Rosie - family engagement & early learning resource



IEP, Transition & DRDP Parent Meetings

Formal **Individualized Education Program (IEP)** meetings to discuss student progress.

- Emphasize student strengths, goals & parental participation
- Transition meetings to support successful transition to TK/K

Desired Results Developmental Profile - discuss rate of growth



Staff Trainings

- WestEd DRDP
- Creative Curriculum
- ABA Visualized
- Sensory Strategies
- Crisis Prevention Intervention

LAWNDALE

ELEMENTARY SCHOOL DISTRICT

Thank you

Any questions?

