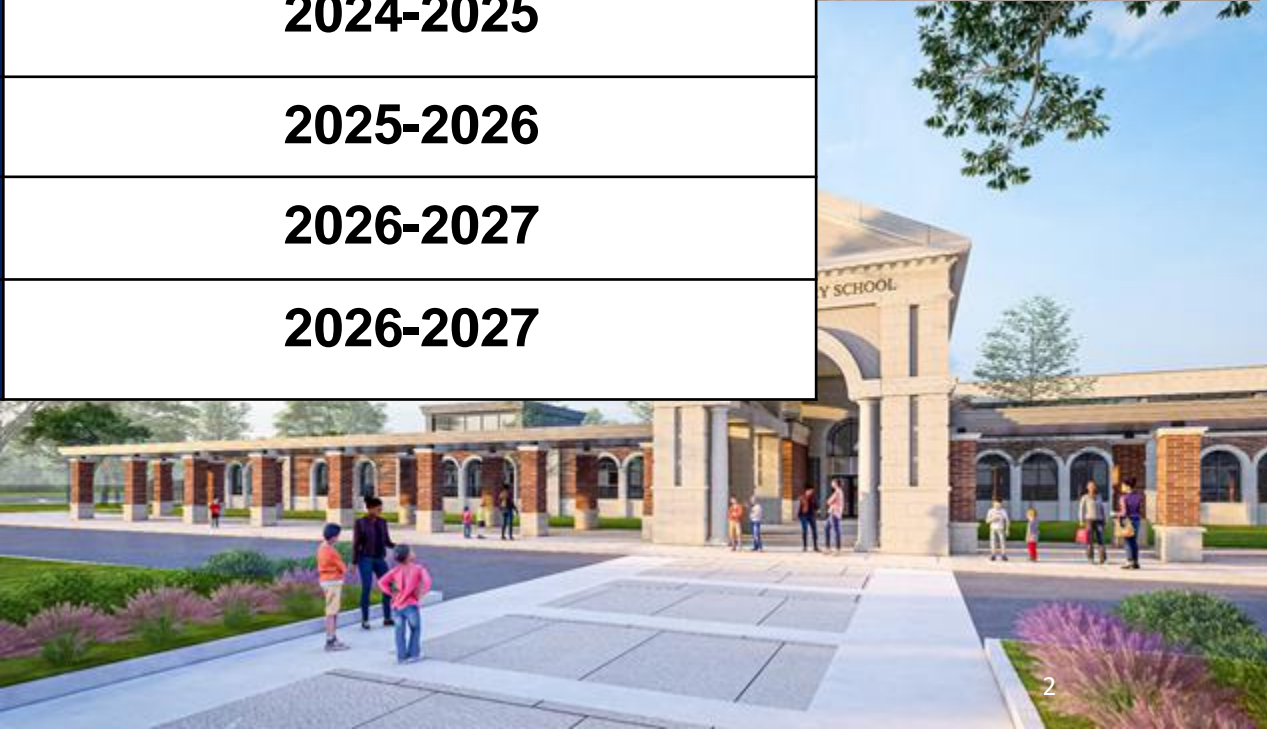




November 13, 2024

Bond 2021



Campus	School Year
West Elementary School	2024-2025
West Intermediate School	2025-2026
CPJHS Addition	2026-2027
Tomball West High School	2026-2027

DZR Review

- Comprehensive and transparent process for creating new zones
- Incorporated a tremendous amount of feedback from parents
- All information, maps, documents and videos are available online for review
- Administration created new zones for all levels to inform community of long-term plans
- School Board approved the elementary plans last year and endorsed the other levels
- Annual commitment to review the projections and ensure accuracy
- Trustee final approval of new zones prior to implementation

Campus	DZR Projected Enrollment	PEIMS Snapshot Enrollment	Difference
Early Excellence Academy	223	219	-4
Canyon Pointe	782	829	47
Creekside Forest	762	676	-86
Creekview	920	937	17
Decker Prairie	719	643	-76
Grand Oaks	513	548	35
Lakewood	767	756	-11
Rosehill	681	751	70
Tomball	656	668	12
Timber Creek	907	970	63
West	704	741	37
Wildwood	861	819	-42
Willow Creek	657	687	30
Elementary TOTAL	9152	9244	92
District TOTAL	22950	22923	-27

Potential Factors in Enrollment Variation

- Canyon Pointe bilingual programming increase and potential need for southern Early Excellence Academy
- Further investigation and analysis needed at Creekside Forest, Decker Prairie and Wildwood
- Continued growth of new housing developments near Grand Oaks, Rosehill and West
- Higher mobility and increases related to industry and multi-unit housing at Timber Creek



Phase 2 Implementation:
Intermediate & Junior High

District Zone Reset Phased Implementation

2024-25 Phase 1

Elementary

- Canyon Pointe ES
- Decker Prairie ES
- Grand Oaks ES
- Lakewood ES
- Rosehill ES
- Tomball ES
- West ES
- Willow Creek ES
- Willow Wood ES

**NO CHANGE TO INTERMEDIATE,
JUNIOR HIGH OR HIGH SCHOOLS**

2025-26 Phase 2

Intermediate

- Northpointe IS
- Oakcrest IS
- Tomball IS
- West IS

Junior High

- Grand Lakes JH
- Tomball JH
- Willow Wood JH

**NO CHANGE TO ELEMENTARY OR
HIGH SCHOOLS**

2026-27 Phase 3

Elementary K-4 Reconfiguration

- Creekside Forest ES
- Creekview ES
- Timber Creek ES

Intermediate Reconfiguration

- Creekside 5th/CPJHS 6th

Junior High Reconfiguration 7-8

- Creekside Park JH

High School

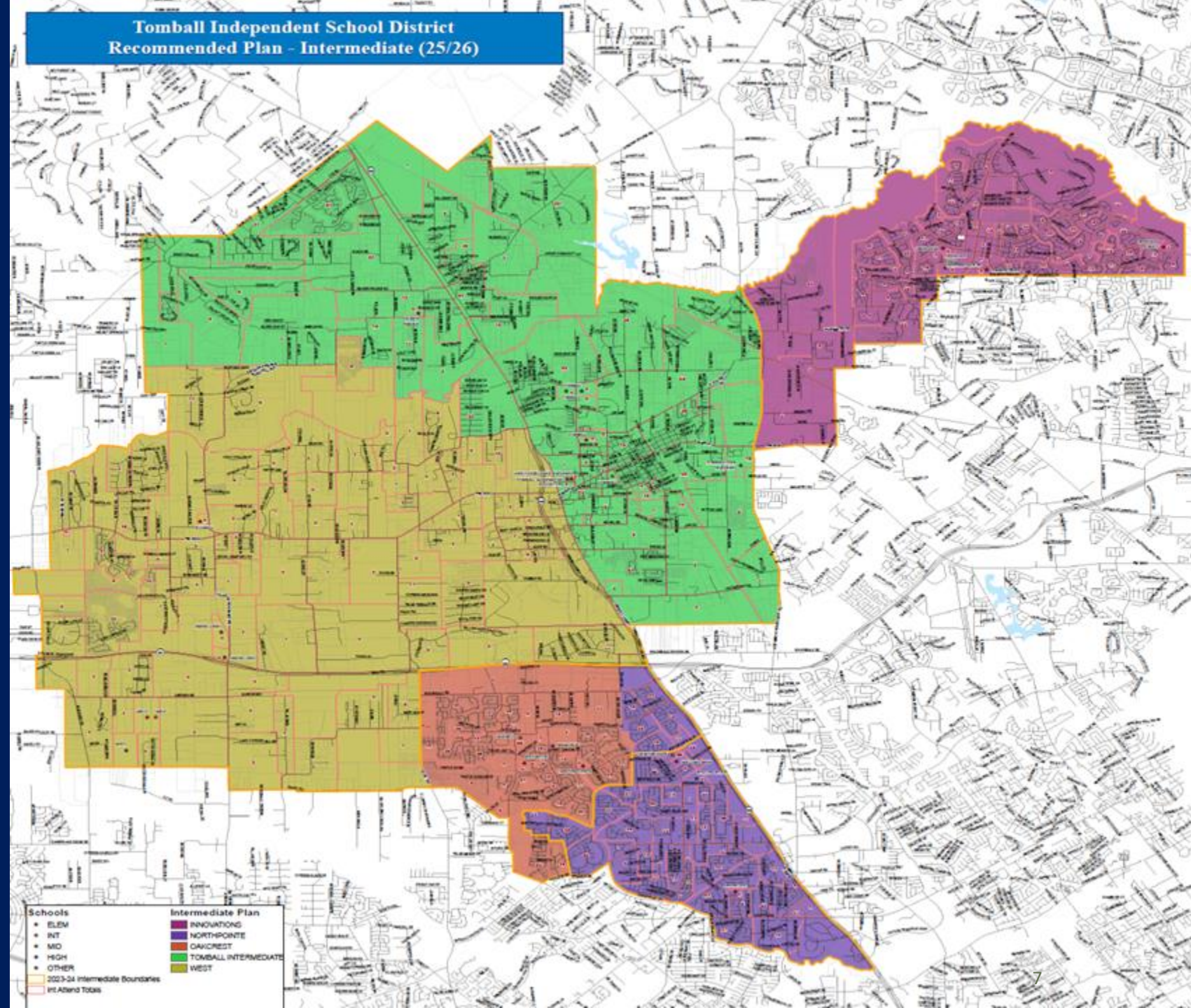
- 11-12 grade UNAFFECTED
- Tomball
- Tomball Memorial
- Tomball West

IMPLEMENTED

Recommended Plan

Intermediate School
Phase 2

2025-26 Implementation



Recommended Plan

Intermediate School
Enrollment Forecast

TOMBALL ISD

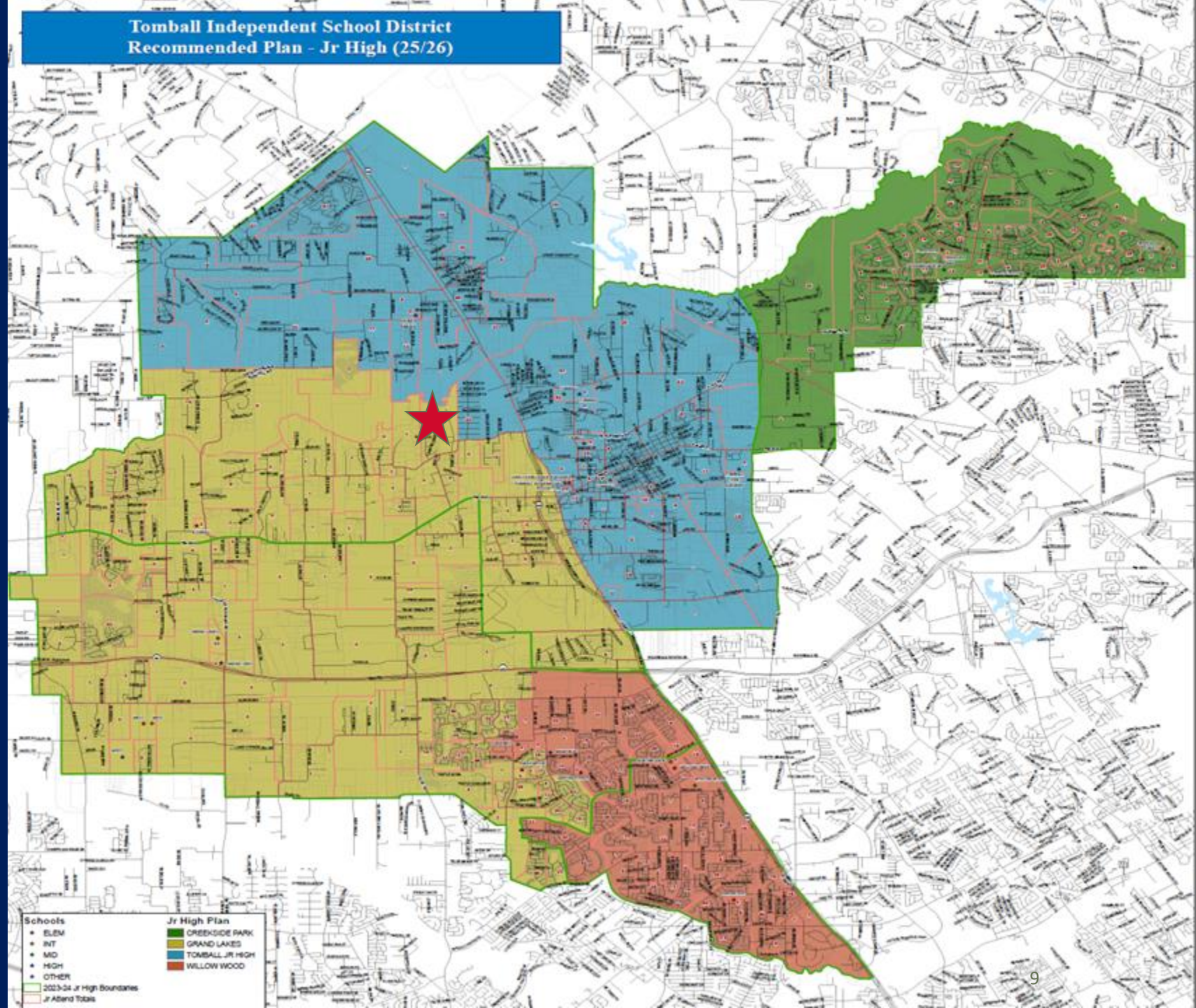
Recommended Plan - Intermediate (25/26)

SCHOOL	CAPACITY	2024/25	2025/26	2026/27	2027/28	2028/29	2029/30	2030/31
CREEKSIDE 5th/CPJHS 6th				932	941	907	876	876
NORTHPOINTE	980		850	845	847	805	780	813
OAKCREST	920		764	814	793	788	857	870
TOMBALL	975		827	855	839	821	875	894
WEST	920		429	496	543	586	667	713
TOTAL	3,795		3,791	3,942	3,963	3,907	4,055	4,166

Recommended Plan

Junior High School
Phase 2

2025-26 Implementation



Recommended Plan

Junior High School
Enrollment Forecast

TOMBALL ISD Recommended Plan - Jr High (25/26)

SCHOOL	CAPACITY	2024/25	2025/26	2026/27	2027/28	2028/29	2029/30	2030/31
CREEKSIDE PARK	1,500			902	942	959	973	932
GRAND LAKES	1,500		958	1,037	1,108	1,198	1,198	1,212
TOMBALL	1,118		847	917	949	1,024	1,035	1,059
WILLOW WOOD	1,264		1,196	1,154	1,136	1,120	1,109	1,046
TOTAL	5,382		3,845	4,010	4,135	4,301	4,315	4,249

Recommended Plan

High School
Phase 3

2026-27 Implementation



Board Action Item for consideration in November:

Approve new Tomball ISD intermediate and junior high school attendance boundaries, effective for the 2025-2026 school year, and endorse the high school zones for 2026-27 as recommended by administration. (Priority 7)

ANY
Questions?



Thank You!

