

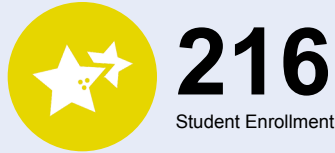


OREGON AT-A-GLANCE SCHOOL PROFILE
Sauvie Island School

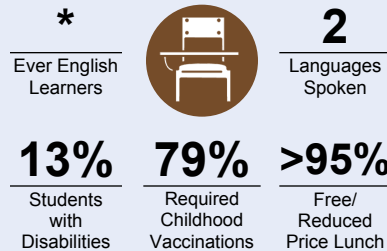
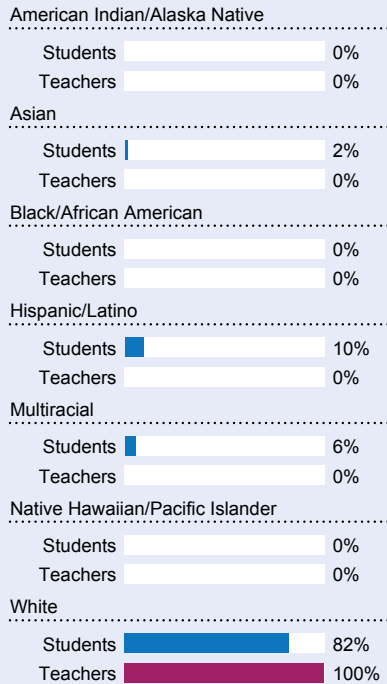


PRINCIPAL: Darla Meeuwesen | GRADES: K-8 | 14445 NW Charlton Rd, Portland 97231 | 503-621-3426

Students We Serve



DEMOGRAPHICS



*<10 students or data unavailable

Special Note

The At-A-Glance School and District profiles tell a story about Oregon's schools and districts. The story is harder to tell this year as the COVID-19 pandemic significantly impacted our schools and the data we collect.

Academic Success

ENGLISH LANGUAGE ARTS

Students meeting state grade-level expectations.

For 2020-21 English Language Arts data please visit:

www.oregon.gov/ode/schools-and-districts/reportcards/reportcards/Pages/Statewide-Assessment-Results-2021.aspx

School Environment

REGULAR ATTENDERS

Students who attended more than 90% of their enrolled school days.

For 2020-21 Regular Attenders data please visit:

www.oregon.gov/ode/schools-and-districts/reportcards/reportcards/Pages/Regular-Attenders-2021.aspx

MATHEMATICS

Students meeting state grade-level expectations.

For 2020-21 Mathematics data please visit:

www.oregon.gov/ode/schools-and-districts/reportcards/reportcards/Pages/Statewide-Assessment-Results-2021.aspx

Academic Progress

INDIVIDUAL STUDENT PROGRESS

Year-to-year progress in English language arts and mathematics.

Data not available in 2020-21

SCIENCE

Students meeting state grade-level expectations.

For 2020-21 Science data please visit:

www.oregon.gov/ode/schools-and-districts/reportcards/reportcards/Pages/Statewide-Assessment-Results-2021.aspx

School Goals

SIS is a nonprofit, K-8 public charter school providing students with unique learning experiences. Our vision is to systematically and intentionally integrate the concepts of Placed-Based Education into quality standards-based core curriculum so students are engaged in their learning and connected to their community.

State Goals

The Oregon Department of Education is partnering with school districts and local communities to ensure a 90% on-time, four year graduation rate by 2025. To progress toward this goal, the state will prioritize efforts to improve attendance, provide a well-rounded education, invest in implementing culturally responsive practices, and promote continuous improvement to close opportunity and achievement gaps for historically and currently underserved students.

Safe & Welcoming Environment

SIS strives to ensure all students and their parents/guardians feel welcome, included and part of our school community. As a public charter school, our students come from many of the surrounding communities and bring with them a wealth of experiences, diverse backgrounds, and varied perspectives.



Outcomes

Our Staff (rounded FTE)



12

Teachers



4

Educational assistants



<1

Counselors/
Psychologists



78%

Average teacher retention rate



83%

% of licensed teachers with more than 3 years of experience



Yes

Same principal in the last 3 years

	REGULAR ATTENDERS	ENGLISH LANGUAGE ARTS	MATHEMATICS
American Indian/Alaska Native			
Asian			
Black/African American			
Hispanic/Latino			
Multiracial			
Native Hawaiian/Pacific Islander			
White			
Free/Reduced Price Lunch			
Ever English Learner			
Students with Disabilities			
Migrant			
Homeless			
Talented and Gifted			
Female			
Male			
Non-Binary			

About Our School

BULLYING, HARASSMENT, AND SAFETY POLICIES

To ensure a safe and secure learning environment for all students we have clear policies regarding bullying/harassment, as well as ongoing education for students and staff. Students receive guidance lessons that teach students how to recognize, respond and report bullying, harassment and unsafe behaviors. Students practice using Kelso's Choices to learn how to solve small problems on their own. In addition, we have an emergency action plan, regular safety drills and a school safety committee. Each year students and parents are encouraged to provide feedback on the annual student and parent surveys.

EXTRACURRICULAR ACTIVITIES

At SIS we believe in using the local community and environment as a starting point to teaching concepts in language arts, mathematics, social studies, science and other subjects across the curriculum. We offer academic and extracurricular activities:

- Service Learning, Art, Music

- Sunday Science & Flight Club, Children's Theater, Archery

- Makers Space, Talent Show, Field Day Middle School Specific: 8th Grade Project, Mock Trial, Outdoor School, Student Ambassadors

- Athletics: Football, Volleyball, Cross Country, Wrestling, Girls & Boys Basketball, Track

- Dances, Assemblies, Spirit Week

- Electives: Art, Music Club, Gardening, Yearbook, Community Service, etc.

PARENT ENGAGEMENT

At SIS we welcome and encourage parent/guardian engagement. We have an active parent-teacher club and volunteer coordinators who help coordinate and support our Place-based approach to learning.

- School-wide Welcome Back BBQ, Family Curriculum Nights, K-8 Open House

- Parent Conferences & Music Concerts (Winter & Spring)

- Daily School Lunch Program, Afterschool Care Program

All volunteers go through a background check prior to working with students. Staff regularly communicates with parents on a weekly basis, a schoolwide newsletter every other week and parent conferences twice a year for all grades. We provide interpreters for conferences and meetings, to ensure all families are able to access information regarding their student(s).

COMMUNITY ENGAGEMENT

Community partnerships and engagement are essential for our Place-Based Program. Community partners provide knowledge of the area and the environment, to develop, grow and implement our curriculum. We work with our partners to host events and service learning opportunities, in order to help foster stewardship for the community. Events Include: Harvest Festival, Clothing Exchange, Colonial Days

This year we worked closely with island partners, such as Sauvie Island Pumpkin Patch, Topaz Farm, Sauvie Island Ctr, the Sauvie Island Community Assoc, the Sauvie Island Grange, Bailey's Nursery, the Sauvie Island Fire Assoc, and many more to provide our students and teachers access to resources that enhance instruction and our local "Out and Abouts."