



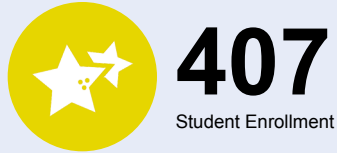
# OREGON AT-A-GLANCE SCHOOL PROFILE

## Otto Petersen Elementary School

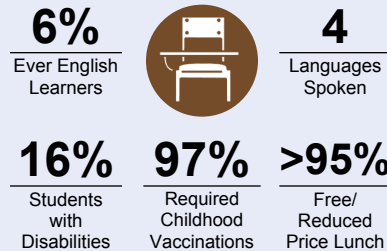
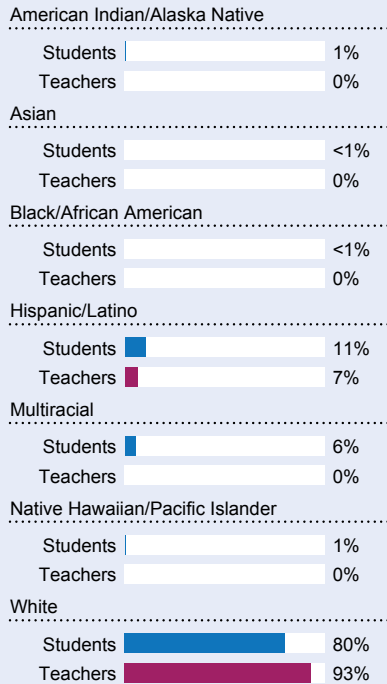


PRINCIPAL: Jenneca Crocker | GRADES: 4-6 | 52050 SE 3rd St, Scappoose 97056 | 971-200-8003

### Students We Serve



### DEMOGRAPHICS



\*<10 students or data unavailable

### Special Note

The At-A-Glance School and District profiles tell a story about Oregon's schools and districts. The story is harder to tell this year as the COVID-19 pandemic significantly impacted our schools and the data we collect. As a result, statewide assessment and attendance data cannot be compared to prior years and are not shown here. We have included links to our website where you can view the 2020-21 statewide assessment and attendance data and read a detailed description of how these data were impacted. We're thankful for your partnership as we focus on care, connection and the creation of safe, inclusive and supportive learning environments.

### Academic Success

#### ENGLISH LANGUAGE ARTS

Students meeting state grade-level expectations.

For 2020-21 English Language Arts data please visit:

[www.oregon.gov/ode/schools-and-districts/reportcards/reportcards/Pages/Statewide-Assessment-Results-2021.aspx](http://www.oregon.gov/ode/schools-and-districts/reportcards/reportcards/Pages/Statewide-Assessment-Results-2021.aspx)

### School Environment

#### REGULAR ATTENDERS

Students who attended more than 90% of their enrolled school days.

For 2020-21 Regular Attenders data please visit:

[www.oregon.gov/ode/schools-and-districts/reportcards/reportcards/Pages/Regular-Attenders-2021.aspx](http://www.oregon.gov/ode/schools-and-districts/reportcards/reportcards/Pages/Regular-Attenders-2021.aspx)

#### MATHEMATICS

Students meeting state grade-level expectations.

For 2020-21 Mathematics data please visit:

[www.oregon.gov/ode/schools-and-districts/reportcards/reportcards/Pages/Statewide-Assessment-Results-2021.aspx](http://www.oregon.gov/ode/schools-and-districts/reportcards/reportcards/Pages/Statewide-Assessment-Results-2021.aspx)

### Academic Progress

#### INDIVIDUAL STUDENT PROGRESS

Year-to-year progress in English language arts and mathematics.

Data not available in 2020-21

#### SCIENCE

Students meeting state grade-level expectations.

For 2020-21 Science data please visit:

[www.oregon.gov/ode/schools-and-districts/reportcards/reportcards/Pages/Statewide-Assessment-Results-2021.aspx](http://www.oregon.gov/ode/schools-and-districts/reportcards/reportcards/Pages/Statewide-Assessment-Results-2021.aspx)

### School Goals

Our team bridged the home-to-school gap with students, families and the community to ensure students had the technology, access and support needed to attend virtual classes and engage in academic learning. We provided a strong focus on connection, care and relationships by providing instruction and opportunities that support growth in social emotional competency. We connected with students through various virtual enrichment classes, increased relationships with families and had high levels of engagement and improved attendance.

### State Goals

The Oregon Department of Education is partnering with school districts and local communities to ensure a 90% on-time, four year graduation rate by 2025. To progress toward this goal, the state will prioritize efforts to improve attendance, provide a well-rounded education, invest in implementing culturally responsive practices, and promote continuous improvement to close opportunity and achievement gaps for historically and currently underserved students.

### Safe & Welcoming Environment

OPE is intentional in our actions to ensure all students feel welcome and safe. In transition to Hybrid Learning, staff greeted students everyday upon arrival to help familiarize students with health and safety procedures. We supported the learning shift through parent nights, community outreach and parent-friendly guides to partner in adhering to protocols and procedures. We believe in consistent and respectful behaviors for our entire community that defines, teaches and supports a positive climate.



# OREGON AT-A-GLANCE SCHOOL PROFILE CONTINUED

## Otto Petersen Elementary School



### Outcomes

#### Our Staff (rounded FTE)



**24**

Teachers



**11**

Educational  
assistants



**1**

Counselors/  
Psychologists



**86%**

Average teacher  
retention rate



**75%**

% of licensed teachers  
with more than 3 years  
of experience



**No**

Same principal in  
the last 3 years

	REGULAR ATTENDERS	ENGLISH LANGUAGE ARTS	MATHEMATICS
American Indian/Alaska Native			
Asian			
Black/African American			
Hispanic/Latino			
Multiracial			
Native Hawaiian/Pacific Islander			
White			
Free/Reduced Price Lunch			
Ever English Learner			
Students with Disabilities			
Migrant			
Homeless			
Talented and Gifted			
Female			
Male			
Non-Binary			

### About Our School

#### BULLYING, HARASSMENT, AND SAFETY POLICIES

As a PBIS school, we provide guidance and character trait lessons, and instruction in social emotional competencies. Students learn to foster relationships, develop community connection, practice how to resolve conflict, and seek support of trusted adults. Our school updated our PBIS expectations to develop new standards of conduct for interactions in a virtual setting. We use the Sanford Harmony Curriculum to support mental health needs and social emotional competency growth. We utilize the Standard Response Protocol by the 'I Love U Guys' Foundation to prepare staff and students on emergency response in any situation.

#### EXTRACURRICULAR ACTIVITIES

We offered various virtual enrichment classes to foster meaningful connections and support student engagement. Students had access to Physical Education classes, guidance lessons, music classes, lunch groups and morning meetings. Activities and classes were offered in a live and virtual setting where students connected with specialists and built connections with peers based on common interests. Our support team conducted Fly-Up days to strengthen the transitions between schools for our incoming 4th Grade students and outgoing 6th Grade students. Many of our students participated in district athletic programs and opportunities after the regular school day.

#### PARENT ENGAGEMENT

We met with families one-on-one at socially distanced home visits to encourage student participation and attendance as well increase awareness of available resources. Back to School Night was a time to reconnect and learn about the school staff and upcoming programs. K-6 Parent Connect was an open forum to learn about the new shifts with Comprehensive Distance Learning. 4th-6th Grade Reopening Presentation reviewed and discussed the plans for transitioning to an in-person Hybrid learning model. Virtual Family/Teacher conferences were provided, and the Otto Petersen Parent Organization events and meetings provided involvement opportunities.

#### COMMUNITY ENGAGEMENT

This year, our community members came together to help provide and distribute technology to our students and families in need. Our community stakeholders collaborated with our food service department to provide/deliver free meals to our students and supported food and clothing drives to support displaced families at the local fairgrounds.