

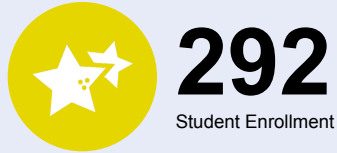


OREGON AT-A-GLANCE SCHOOL PROFILE Grant Watts Elementary School

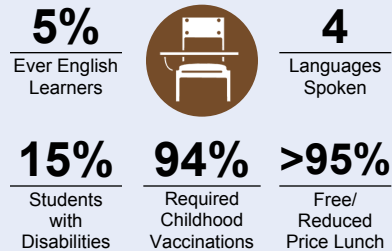
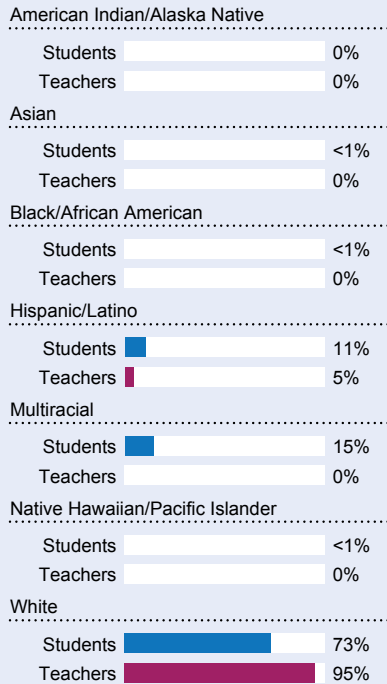
PRINCIPAL: Bianca Sapp | GRADES: K-3 | 52000 SE Third Pl, Scappoose 97056 | 971-200-8002



Students We Serve



DEMOGRAPHICS



*<10 students or data unavailable

Special Note

The At-A-Glance School and District profiles tell a story about Oregon's schools and districts. The story is harder to tell this year as the COVID-19 pandemic significantly impacted our schools and the data we collect...

Academic Success

ENGLISH LANGUAGE ARTS

Students meeting state grade-level expectations.

For 2020-21 English Language Arts data please visit:

www.oregon.gov/ode/schools-and-districts/reportcards/reportcards/Pages/Statewide-Assessment-Results-2021.aspx

School Environment

REGULAR ATTENDERS

Students who attended more than 90% of their enrolled school days.

For 2020-21 Regular Attenders data please visit:

www.oregon.gov/ode/schools-and-districts/reportcards/reportcards/Pages/Regular-Attenders-2021.aspx

MATHEMATICS

Students meeting state grade-level expectations.

For 2020-21 Mathematics data please visit:

www.oregon.gov/ode/schools-and-districts/reportcards/reportcards/Pages/Statewide-Assessment-Results-2021.aspx

Academic Progress

INDIVIDUAL STUDENT PROGRESS

Year-to-year progress in English language arts and mathematics.

Data not available in 2020-21

SCIENCE

Students meeting state grade-level expectations.

For 2020-21 Science data please visit:

www.oregon.gov/ode/schools-and-districts/reportcards/reportcards/Pages/Statewide-Assessment-Results-2021.aspx

School Goals

Grant Watts Elementary is a unique school with a strong sense of community! GWE has focus on school improvement by addressing the health of the school at its core. We will continue this path by reaching out to the community for input and using this information to guide daily instruction...

State Goals

The Oregon Department of Education is partnering with school districts and local communities to ensure a 90% on-time, four year graduation rate by 2025. To progress toward this goal, the state will prioritize efforts to improve attendance, provide a well-rounded education, invest in implementing culturally responsive practices...

Safe & Welcoming Environment

Kids Are Our Focus! We are committed to the growth of the whole child. As such, GWE is an inclusive community of learners. Students are guided in the "Gray Wolf Way" through school-wide PBIS systems with an emphasis on Safe, Respectful, Responsible, and Kind behavior. We will further expand our PBIS systems to continue to be intentional in our efforts and actions to ensure all students feel safe, welcome, and included in our community...



Outcomes

Our Staff (rounded FTE)



19
Teachers



8
Educational
assistants



1
Counselors/
Psychologists



79%
Average teacher
retention rate



70%
% of licensed teachers
with more than 3 years
of experience



Yes
Same principal in
the last 3 years

	REGULAR ATTENDERS	ENGLISH LANGUAGE ARTS	MATHEMATICS
American Indian/Alaska Native			
Asian			
Black/African American			
Hispanic/Latino			
Multiracial			
Native Hawaiian/Pacific Islander			
White			
Free/Reduced Price Lunch			
Ever English Learner			
Students with Disabilities			
Migrant			
Homeless			
Talented and Gifted			
Female			
Male			
Non-Binary			

About Our School

BULLYING, HARASSMENT, AND SAFETY POLICIES

We are dedicated to maintaining an inclusive environment where students are not only welcomed and supported but also feel socially, emotionally, and physically safe. Systems and supports include:

- Positive Behavior Support System
- School-wide behavior and character lessons
- Character recognition program and positive office referrals
- Bullying and Harassment policy and prevention
- Counseling services-Stop, Walk, Talk, and Kelso's Wheel

GWE has plans and protocols in place for weather events, fires accidents, intruders, and other threats to safety. These protocols are practiced on a regular schedule throughout the school. We use the I Love You Guys standard response protocol.

EXTRACURRICULAR ACTIVITIES

All students at Grant Watts participate in Physical Education, Music, and Lunch Buddy-Up. Plans are in place to introduce mindfulness exercises along with school-wide activities to promote equity. In addition, GWE provides after-school care with community sports. During Comprehensive Distance Learning, after-school activities were temporarily suspended. Furthermore, character assemblies are conducted once a month to recognize students that exemplify the PBIS character traits. During distance learning, these assemblies were done virtually with in-person deliveries of rewards.

PARENT ENGAGEMENT

Grant Watts conducted all parent involvement activities virtually during CDL.

- Kinder Connect
- School Supply Drop Off
- Grade level music concerts
- GWPO Family Movie Night
- PAWS with the Principal
- Parent Information Night: Preparing for Hybrid
- Activity Nights with the Principal

COMMUNITY ENGAGEMENT

This year our community members came together to help provide and distribute technology to our students and families in need. Our community stakeholders collaborated with GWPO and administration to assist in distributing food and necessary supplies to families in need.