



OREGON AT-A-GLANCE SCHOOL PROFILE

Warren Elementary School

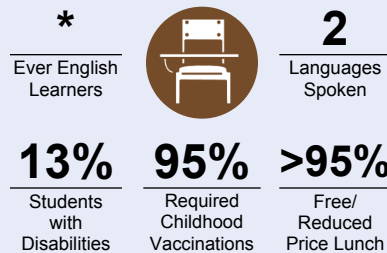
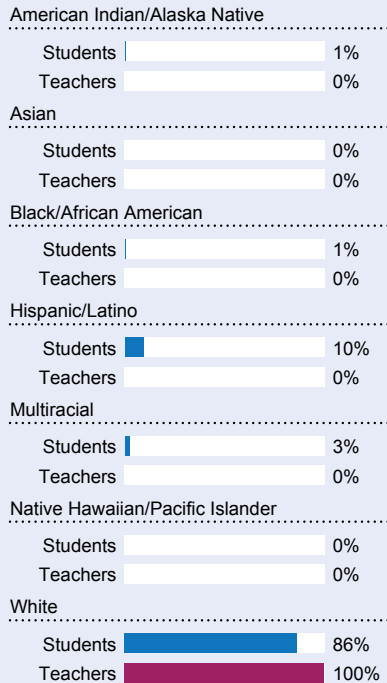
PRINCIPAL: Jennifer Angelo | GRADES: K-3 | 34555 Berg Rd, Warren 97053 | 503-397-2959



Students We Serve



DEMOGRAPHICS



Special Note

The At-A-Glance School and District profiles tell a story about Oregon's schools and districts. The story is harder to tell this year as the COVID-19 pandemic significantly impacted our schools and the data we collect. As a result, statewide assessment and attendance data cannot be compared to prior years and are not shown here. We have included links to our website where you can view the 2020-21 statewide assessment and attendance data and read a detailed description of how these data were impacted. We're thankful for your partnership as we focus on care, connection and the creation of safe, inclusive and supportive learning environments.

Academic Success

ENGLISH LANGUAGE ARTS

Students meeting state grade-level expectations.

For 2020-21 English Language Arts data please visit:

www.oregon.gov/ode/schools-and-districts/reportcards/reportcards/Pages/Statewide-Assessment-Results-2021.aspx

School Environment

REGULAR ATTENDERS

Students who attended more than 90% of their enrolled school days.

For 2020-21 Regular Attenders data please visit:

www.oregon.gov/ode/schools-and-districts/reportcards/reportcards/Pages/Regular-Attenders-2021.aspx

MATHEMATICS

Students meeting state grade-level expectations.

For 2020-21 Mathematics data please visit:

www.oregon.gov/ode/schools-and-districts/reportcards/reportcards/Pages/Statewide-Assessment-Results-2021.aspx

Academic Progress

INDIVIDUAL STUDENT PROGRESS

Year-to-year progress in English language arts and mathematics.

Data not available in 2020-21

SCIENCE

Students meeting state grade-level expectations.

For 2020-21 Science data please visit:

www.oregon.gov/ode/schools-and-districts/reportcards/reportcards/Pages/Statewide-Assessment-Results-2021.aspx

School Goals

We strive to promote success by helping students maintain academic engagement and community connections throughout Comprehensive Distance and Hybrid Learning. We work with families, students and the larger community to ensure students have the technology needed to attend virtual classes and engage with academics and peers. Through collaboration with staff we provided a strong focus on connection, care and relationships by dedicating time to provide instruction and systems that supported growth in social emotional competency.

State Goals

The Oregon Department of Education is partnering with school districts and local communities to ensure a 90% on-time, four year graduation rate by 2025. To progress toward this goal, the state will prioritize efforts to improve attendance, provide a well-rounded education, invest in implementing culturally responsive practices, and promote continuous improvement to close opportunity and achievement gaps for historically and currently underserved students.

Safe & Welcoming Environment

Our school is intentional in our efforts and actions to ensure that all students and families feel welcome and safe in our school community. As our school transitioned to Hybrid Learning, staff greeted students everyday upon arrival to help familiarize students with health and safety procedures and welcome them into the school building. We developed daily community circles to increase school connections and healthy peer relationships.



OREGON AT-A-GLANCE SCHOOL PROFILE CONTINUED

Warren Elementary School



Outcomes

Our Staff (rounded FTE)



10
Teachers



5
Educational
assistants



<1
Counselors/
Psychologists



80%
Average teacher
retention rate



82%
% of licensed teachers
with more than 3 years
of experience



No
Same principal in
the last 3 years

	REGULAR ATTENDERS	ENGLISH LANGUAGE ARTS	MATHEMATICS
American Indian/Alaska Native			
Asian			
Black/African American			
Hispanic/Latino			
Multiracial			
Native Hawaiian/Pacific Islander			
White			
Free/Reduced Price Lunch			
Ever English Learner			
Students with Disabilities			
Migrant			
Homeless			
Talented and Gifted			
Female			
Male			
Non-Binary			

About Our School

BULLYING, HARASSMENT, AND SAFETY POLICIES

Through our PBIS program and with specifically designed classes provided by our school counselor, and direct instruction from teachers in character education and social emotional competencies as well as daily participation in daily community circles; our students learn to foster relationships, develop a sense of community connection, how to resolve conflict, solve problems and seek support of trusted adults when needed. To ensure safe and secure learning environments for our students, our school updated our PBIS systems and expectations during Comprehensive Distance Learning.

EXTRACURRICULAR ACTIVITIES

At Warren, we offered various virtual enrichment classes to foster meaningful connections and support student engagement. Each week at Warren Elementary, all students had access to Physical Education and Mindfulness Classes, Music Classes, Art Lessons, Read Alouds, and Social Lunch Bunch. These classes were offered in a live virtual setting where students could not only connect with specialists but build connections and relationships with a variety of peers based on common interests. To meet safety requirements of RSSL many of our extracurricular activities were postponed or done in a virtual setting.

PARENT ENGAGEMENT

- Back to School night, a time for families to come learn about the staff and upcoming programs
 - Parent Connect Evening, an open forum to learn about the new shifts with Comprehensive Distance Learning and transitioning back to a Hybrid setting
 - Kinder Connect Evening, an opportunity for new Kindergarteners to learn about the ins and outs of school and engagement activities
 - Kinder Camp, a summer program for incoming Kindergarteners to learn what school is all about
- We met with families one-on-one at socially distanced home visits to encourage student participation and attendance as well as increase awareness of available resources.

COMMUNITY ENGAGEMENT

This year our community members came together to help provide and distribute technology to our students and families in need. Our community stakeholders collaborated with our food service department to provide/deliver free meals to our students and supported food and clothing drives to support displaced families at the local fairgrounds.