



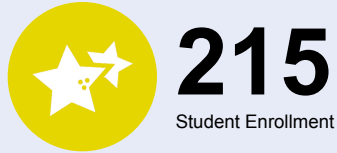
OREGON AT-A-GLANCE SCHOOL PROFILE

Sauvie Island School

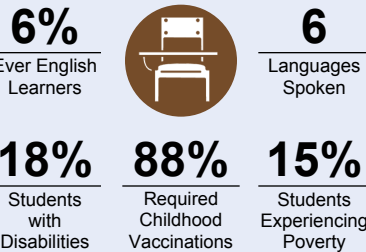
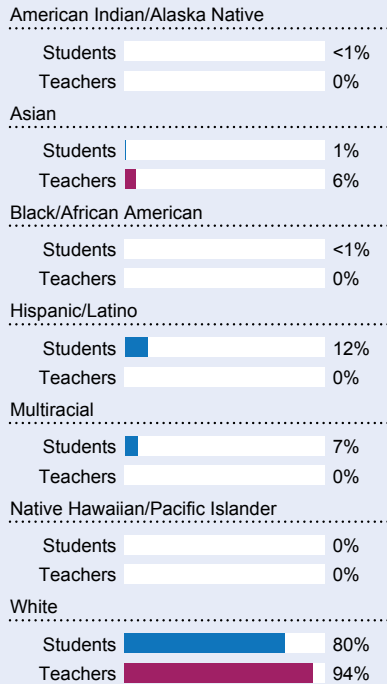


PRINCIPAL: Darla Meeuwesen | GRADES: K-8 | 14445 NW Charlton Rd, Portland 97231 | 503-621-3426

Students We Serve



DEMOGRAPHICS

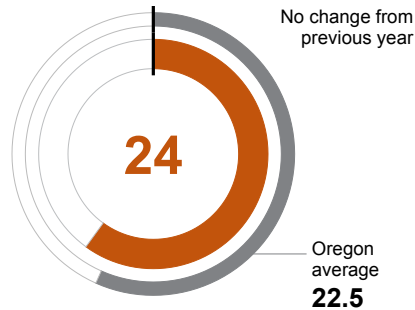


*<10 students or data unavailable

School Environment

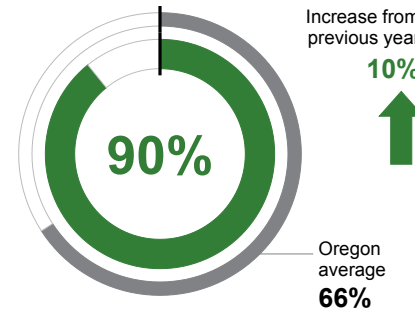
CLASS SIZE

Median class size.



REGULAR ATTENDERS

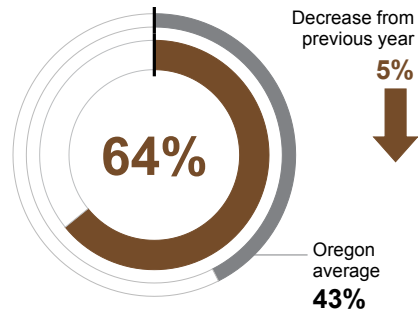
Students who attended more than 90% of their enrolled school days.



Academic Success

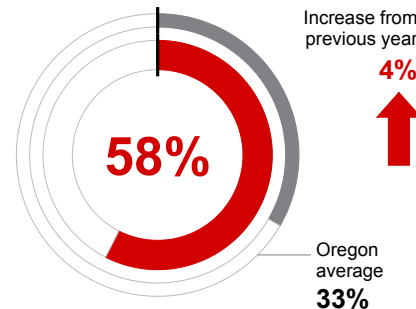
ENGLISH LANGUAGE ARTS

Students meeting state grade-level expectations.



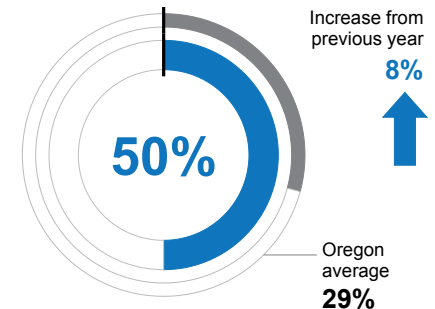
MATHEMATICS

Students meeting state grade-level expectations.



SCIENCE

Students meeting state grade-level expectations.



School Goals

SIS is a nonprofit, K-8 public charter school providing students with unique learning experiences. Our vision is to systematically and intentionally integrate the concepts of Placed-Based Education into quality standards-based core curriculum so students are engaged in their learning and connected to their community. At SIS, sense of place and the importance of community are key. Students learn and experience the value of applied and real-world experiences in our community. Students develop the ability to think critically, communicate effectively and excel academically.

State Goals

The Oregon Department of Education is collaborating with school districts and communities across the state to achieve a 90% on-time graduation rate by 2027. Grounded in the pillars of Academic Excellence, Belonging and Wellness, and Reimagined Accountability, ODE prioritizes evidence-based practices to boost early literacy, attendance, and student engagement. We are committed to closing opportunity and achievement gaps for marginalized students and securing long-term success for all of Oregon's learners by investing in culturally responsive practices, fostering inclusive environments and always driving for continuous improvement.

Safe & Welcoming Environment

SIS strives to ensure all students and their parents/guardians feel welcome, included and part of our school community. As a public charter school, our students come from many of the surrounding communities and bring with them a wealth of experiences, diverse backgrounds, and varied perspectives. At SIS we believe in positive behavior interventions and supports (PBIS) by teaching behavioral expectations and acknowledging students for following them as a more positive approach than waiting for misbehavior to occur before responding. As a school and a community, we focus on being respectful, responsible, safe and kind.



OREGON AT-A-GLANCE SCHOOL PROFILE CONTINUED

Sauvie Island School



2023-24

Outcomes

Our Staff (rounded FTE)



14

Teachers



5

Educational assistants



1

Counselors/
Psychologists/
Social Workers



82%

Average teacher retention rate over the past three years



64%

% of licensed teachers with more than 3 years of experience



Yes

Same principal in the last 3 years

REGULAR ATTENDERS

American Indian/Alaska Native	<10 students or data unavailable
Asian	<10 students or data unavailable
Black/African American	<10 students or data unavailable
Hispanic/Latino	>95%
Multiracial	77%
Native Hawaiian/Pacific Islander	<10 students or data unavailable
White	89%
Students Experiencing Poverty	83%
Ever English Learner	>95%
Students with Disabilities	92%
Migrant	<10 students or data unavailable
Homeless	<10 students or data unavailable
Students in Foster Care	<10 students or data unavailable
Military Connected	<10 students or data unavailable
Talented and Gifted	<10 students or data unavailable
Female	87%
Male	92%
Non-Binary	<10 students or data unavailable

ENGLISH LANGUAGE ARTS

<10 students or data unavailable
<10 students or data unavailable
<10 students or data unavailable
31%
<10 students or data unavailable
<10 students or data unavailable
<10 students or data unavailable
69%
50%
<10 students or data unavailable
<10 students or data unavailable
<10 students or data unavailable
<10 students or data unavailable
<10 students or data unavailable
<10 students or data unavailable
<10 students or data unavailable
<10 students or data unavailable
29%
<10 students or data unavailable
<10 students or data unavailable
<10 students or data unavailable
<10 students or data unavailable
74%
52%
<10 students or data unavailable

MATHEMATICS

<10 students or data unavailable
<10 students or data unavailable
<10 students or data unavailable
25%
<10 students or data unavailable
<10 students or data unavailable
<10 students or data unavailable
60%
50%
<10 students or data unavailable
<10 students or data unavailable
<10 students or data unavailable
<10 students or data unavailable
<10 students or data unavailable
<10 students or data unavailable
<10 students or data unavailable
<10 students or data unavailable
39%
<10 students or data unavailable
<10 students or data unavailable
<10 students or data unavailable
<10 students or data unavailable
59%
57%
<10 students or data unavailable

About Our School

BULLYING, HARASSMENT, AND SAFETY POLICIES

To ensure a safe and secure learning environment for all students we have clear policies regarding bullying/harassment, as well as ongoing education for students and staff. Students receive guidance lessons that teach students how to recognize, respond and report bullying, harassment and unsafe behaviors. Students practice using Kelso's Choices to learn how to solve small problems on their own. We have a Student Support Team that supports students, staff and families. In addition, we have an emergency action plan, regular safety drills and a school safety committee. Each year students and parents are encouraged to provide feedback on the annual student and parent surveys.

EXTRACURRICULAR ACTIVITIES

At SIS we believe in using the local community and environment as a starting point to teaching concepts in language arts, mathematics, social studies, science and other subjects across the curriculum. We offer academic and extracurricular activities:

- Service Learning, Art, Music
- Daily P.E., Field Day

Middle School Specific:

- 8th Grade Project, Mock Trial, Student Ambassadors
- Football, Volleyball, Cross Country, Wrestling, Girls & Boys Basketball, Track
- Dances, Assemblies, Spirit Week, Boat Building, Outdoor School
- Electives: Art, Music Club, Gardening, Yearbook, Community Service, etc.

PARENT ENGAGEMENT

At SIS we welcome and encourage parent/guardian engagement. We have an active parent-teacher club and volunteer coordinators who help coordinate and support our Place-based approach to learning.

- All School Welcome Back BBQ, Family Curriculum Nights, K-8 Open House
- Parent Conferences & Music Concerts
- Daily School Lunch Program
- Live feed on School App

All volunteers go through a background check prior to working with students. Staff regularly communicates with parents on a weekly basis, a schoolwide newsletter every other week and parent conferences twice a year for all grades. We provide interpreters for conferences and meetings, to ensure all families are able to access information regarding their student(s).

COMMUNITY ENGAGEMENT

Community partnerships and engagement are essential for our Place-Based Program. Community partners provide knowledge of the area and the environment, to support and implement our curriculum. We work with our partners to host events and service learning opportunities, in order to help foster stewardship for the community.

Events Include: Harvest Festival, Clothing & Book Exchange

This year we worked closely with island partners, such as Columbia Farms, SI Pumpkin Patch, Topaz Farm, Sauvie Island Ctr, the SI Community Assoc, the SI Grange, Bailey's Nursery, the SI Fire Assoc, and many more to provide our students and teachers access to resources that enhance instruction and our local "Out and Abouts."