



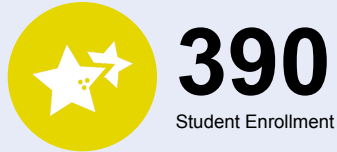
# OREGON AT-A-GLANCE SCHOOL PROFILE

## Otto Petersen Elementary School

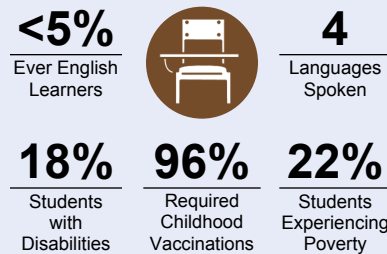
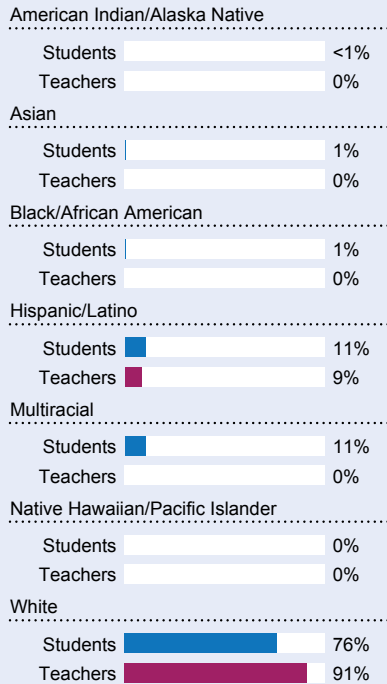
PRINCIPAL: Megan Ticer | GRADES: 4-6 | 52050 SE 3rd St, Scappoose 97056 | 971-200-8003

### School Environment

### Students We Serve



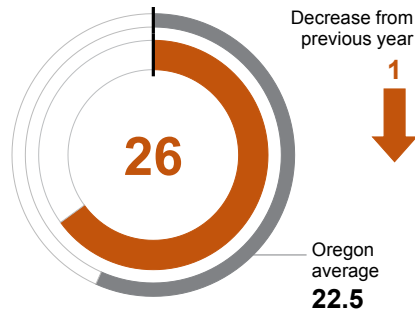
### DEMOGRAPHICS



\*<10 students or data unavailable

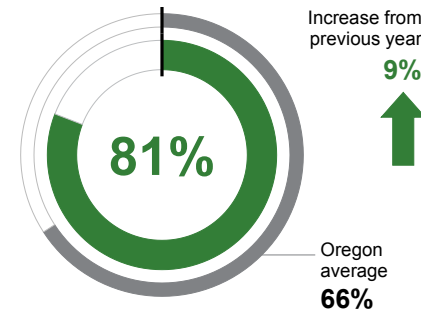
### CLASS SIZE

Median class size.



### REGULAR ATTENDERS

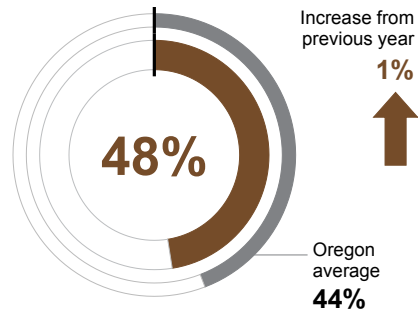
Students who attended more than 90% of their enrolled school days.



### Academic Success

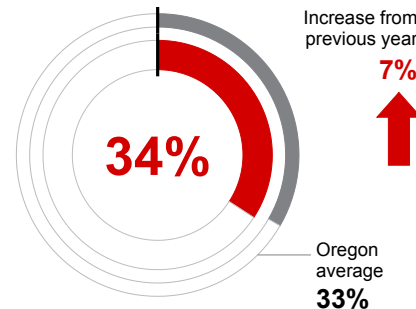
#### ENGLISH LANGUAGE ARTS

Students meeting state grade-level expectations.



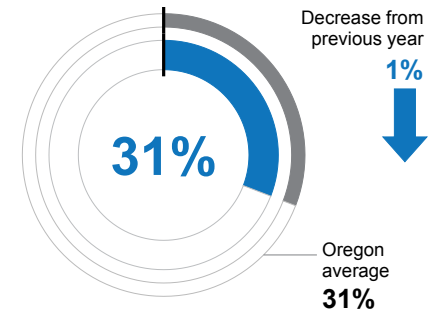
#### MATHEMATICS

Students meeting state grade-level expectations.



#### SCIENCE

Students meeting state grade-level expectations.



### School Goals

The focus for the 2023-24 school year was to increase rigor through literacy instruction across subject areas. Two areas of focus were Math Literacy and Writing. Students had multiple opportunities to develop their reading and writing skills in order to prepare them for various academic settings.

### State Goals

The Oregon Department of Education is collaborating with school districts and communities across the state to achieve a 90% on-time graduation rate by 2027. Grounded in the pillars of Academic Excellence, Belonging and Wellness, and Reimagined Accountability, ODE prioritizes evidence-based practices to boost early literacy, attendance, and student engagement. We are committed to closing opportunity and achievement gaps for marginalized students and securing long-term success for all of Oregon's learners by investing in culturally responsive practices, fostering inclusive environments and always driving for continuous improvement.

### Safe & Welcoming Environment

At Otto Petersen, Character Strong lessons guide students each day in their SEL (Social Emotional Learning) and development. This curriculum specifically prepares our students for a multitude of learning and work environments. This is delivered in a morning meeting setting.



# OREGON AT-A-GLANCE SCHOOL PROFILE CONTINUED

## Otto Petersen Elementary School



### Outcomes

#### Our Staff (rounded FTE)



**20**

Teachers



**9**

Educational  
assistants



**1**

Counselors/  
Psychologists/  
Social Workers



**81%**

Average teacher  
retention rate over  
the past three years



**71%**

% of licensed teachers  
with more than 3 years  
of experience



**No**

Same principal in  
the last 3 years

#### REGULAR ATTENDERS

American Indian/Alaska Native	<10 students or data unavailable
Asian	<10 students or data unavailable
Black/African American	<10 students or data unavailable
Hispanic/Latino	74%
Multiracial	82%
Native Hawaiian/Pacific Islander	<10 students or data unavailable
White	81%
Students Experiencing Poverty	68%
Ever English Learner	57%
Students with Disabilities	78%
Migrant	<10 students or data unavailable
Homeless	<10 students or data unavailable
Students in Foster Care	<10 students or data unavailable
Military Connected	<10 students or data unavailable
Talented and Gifted	83%
Female	79%
Male	82%
Non-Binary	<10 students or data unavailable

#### ENGLISH LANGUAGE ARTS

<10 students or data unavailable
<10 students or data unavailable
<10 students or data unavailable
44%
41%
<10 students or data unavailable
49%
43%
31%
16%
<10 students or data unavailable
<10 students or data unavailable
<10 students or data unavailable
<10 students or data unavailable
<10 students or data unavailable
91%
53%
43%
<10 students or data unavailable

#### MATHEMATICS

<10 students or data unavailable
<10 students or data unavailable
<10 students or data unavailable
21%
29%
<10 students or data unavailable
37%
17%
8%
14%
<10 students or data unavailable
<10 students or data unavailable
<10 students or data unavailable
<10 students or data unavailable
<10 students or data unavailable
91%
28%
39%
<10 students or data unavailable

### About Our School

#### BULLYING, HARASSMENT, AND SAFETY POLICIES

As a PBIS school, we provide guidance and character trait lessons, and instruction in social emotional competencies. Students learn to foster relationships, develop community connection, practice how to resolve conflict, and seek support of trusted adults. Our school updated our PBIS expectations to develop new standards of conduct for interactions in a virtual setting. We use the Sanford Harmony Curriculum to support mental health needs and social emotional competency growth. We utilize the Standard Response Protocol by the "Love U Guys" Foundation to prepare staff and students on emergency response in any situation.

#### EXTRACURRICULAR ACTIVITIES

As students returned to full-time instruction, activities that were placed on hold were reestablished at Otto Petersen Elementary. Musical performances that were suspended were once again ringing through the school halls. The 6th grade students were able to return to cross-country, wrestling and track teams at the middle school. Through generous community donations, students were able to partake in engaging activities such as a fish painting art project and school celebrations.

#### PARENT ENGAGEMENT

As Otto Petersen returned to full-time instruction, parent involvement was still limited due to safety concerns. Through hard work and great collaboration, parents were increasingly able to participate in the school in many ways. Activities, celebrations and traditions that meant a lot to the school community were back on the schedule. Using traditional communication as well as new digital formats the school was able to promote parent outreach. Otto Petersen recognizes and appreciates the wonderful parents of past, current and future students and how much they support school success.

#### COMMUNITY ENGAGEMENT

As Otto Petersen opened up and returned to full time instruction our focus also turned to building back our school community. Back-to-school night started the year out strong, followed by events and activities such as the sock-hop dance, the Oregon Trail Walk, Oregon Battle of the Books and field day. Community partnerships supported school initiatives and allowed teachers and staff to focus on connecting with, and educating, students. Community is important at Petersen and we are very grateful to the greater community that supports us.