

Welcome to Red Hill Elementary

January 16, 2025

Teri Malpass, Principal

tmalpass@tustin.k12.ca.us

RED HILL WAY

***Be Responsible**

***Be Respectful**

***Build Relationships**

432 Students Strong

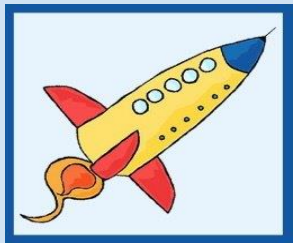
21 Certificated Staff

36 Classified Staff

15 Gen Ed Classrooms

2 SDC Classrooms





The Red Hill Way...



Communication

**Instructional
Leaders**

Building Partnerships

Safety

Collaboration

Family

Being Kind

Our Purpose

Mission:

Red Hill Elementary School is committed to providing an engaging and challenging instructional educational program for all students. We provide a safe and nurturing environment which promotes character-building and establishes a foundation for life-long learning and achievement. We are a dedicated community of students, staff and parents who work collaboratively for the success of all Red Hill students.



School Recognitions



January 2023

**Red Hill receives
California Distinguished School!**



School Recognitions



**Red Hill grew 22 points in math
during the 2022-2024 school year
on CAASPP.
Most growth in TUSD!**

***Vivian Chang, 5th Grade Teacher
Orange County Teacher
of the Year for 2022-2023!**



ENGAGED Staff & Parents



**Red Hill's success is due to
dedicated
Staff,
Students,
and Families**



High Quality Instruction

Rigorous Standards and Engaging Strategies Help students to *Engage, Inquire, and Inspire* 21st Century Learning.



Read it! Love it! Post it!

Division Strategies...

- You know multiples of 2s, 5s, 10s
- If $4 \times 10 = 40$, then 4×9 can be solved using **Subtraction** by
 $4 + 4 + 4 + 4 + 4 + 4 + 4 + 4 + 4 + 4 = 40 - 4 = 36$
1 2 3 4 5 6 7 8 9 10 $4 \times 9 = 36$
- Think **Fact Families** you know with multiples:
by listing fact families you see division
 $n \div 9 = 4$ or $n \div 4 = 9$
 $4 \times 9 = n$ or $9 \times 4 = n$

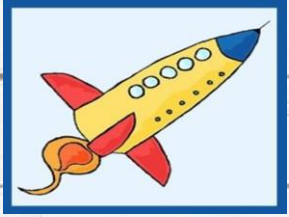


What is Special About Red Hill..

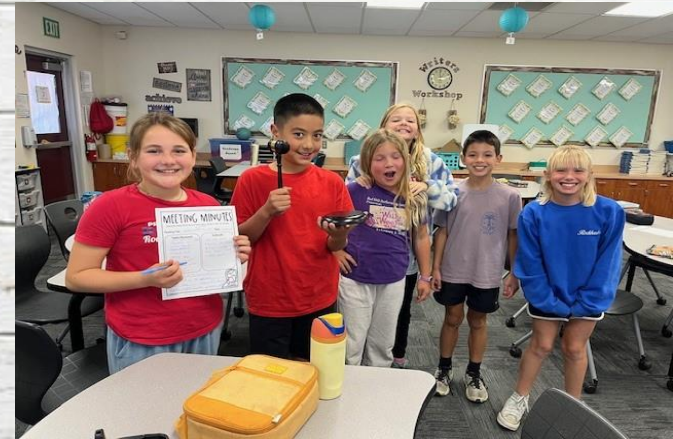
- Red Hill Performing Arts (RHPA)
- Robotics Program
- ISS Lab- Innovative Space station
- ST Math
- CGI- 5 Part Lesson Structure
- Girls and Boys Volleyball
- Student Council/ Kindness Squad
- Staff and Student Celebrations
- OG Phonics for grades K-2
- Morphology for grades 3-5
- Class Act Symphony



Red Hill's Student Council



- Spirit Days
- Fund Raisers
- Morning Announcements
- Leadership
- Classroom Reps
- Kindness Squad



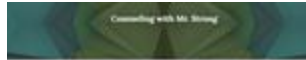
SEL

Social Emotional Learning

- What is SEL?

SEL is the process of learning social skills and self-awareness, emotional management, responsible decision making, and relationship skills students need to succeed.

- SEL Instruction, Counseling, and Support



Mr. Strony is a Counselor at Twin Unified School District. He is a member of the SEL team and provides SEL instruction, counseling, and support to students and staff. He is available for SEL instruction, counseling, and support during school hours. He is also available for SEL instruction, counseling, and support during school hours. He is also available for SEL instruction, counseling, and support during school hours.

ZONES OF REGULATION!

Blue	Green	Yellow	Red
			
Sad Tired Bored Moving Slowly	Happy Calm Good to Go Focused Ready to Learn	Frustrated Worried Silly/Wiggly Anxious Excited	Mad Angry Mean Yelling/Hitting Out of Control I Need Time and Space

PBIS

Positive Behavior Intervention Supports

Red Hill Rockets are...

- *Respectful*
- *Responsible*
- *Build Relationships*



Red Hill Elementary School Positive Behavior System

Red Hill Rockets will...	Playground	Classroom	Lunch	Hallways	Bathrooms	Office	Multi, Library and Computer Lab	Before and After School
Be Respectful	<ul style="list-style-type: none"> ~Listen to duty supervisors ~Be aware of and observe personal space ~Be considerate of school grounds 	<ul style="list-style-type: none"> ~Use an appropriate voice level ~Use proper communication skills ~Take care of materials 	<ul style="list-style-type: none"> ~Listen to noon duty supervisors ~Use good manners ~Wait quietly 	<ul style="list-style-type: none"> ~Walk and speak quietly ~Make room for others to pass ~Be aware of surroundings 	<ul style="list-style-type: none"> ~Use the facilities quickly and quietly ~Use water and supplies wisely 	<ul style="list-style-type: none"> ~Enter quietly ~Wait patiently 	<ul style="list-style-type: none"> ~Leave your area neat and organized ~Use the appropriate voice level ~Enter and exit quietly 	<ul style="list-style-type: none"> ~Remain in designated areas ~Be aware of classroom and work areas ~Sit and wait quietly
Be Responsible	<ul style="list-style-type: none"> ~Play according to school rules ~Return all equipment ~Know and observe the playground boundaries 	<ul style="list-style-type: none"> ~Be on time ~Come and leave prepared and organized ~Help keep classroom clean 	<ul style="list-style-type: none"> ~Clean up your area ~Bring and eat your own food ~Stay seated at the tables 	<ul style="list-style-type: none"> ~Walk on sidewalks and stairs ~Go directly to your destination ~Keep hands, feet, and objects to yourself 	<ul style="list-style-type: none"> ~Lock your stall door ~Flush and wash your hands ~Put trash in trash can 	<ul style="list-style-type: none"> ~Use side door to enter and exit ~Be prepared ~Walk directly to and from office 	<ul style="list-style-type: none"> ~Use materials correctly ~Handle books with care ~Follow directions 	<ul style="list-style-type: none"> ~Use the playground only when a teacher is supervising ~Use crosswalks ~Hold personal belongings appropriately
Build Relationships	<ul style="list-style-type: none"> ~Be kind ~Play fairly ~Be a problem solver 	<ul style="list-style-type: none"> ~Be a problem solver ~Work cooperatively ~Be kind 	<ul style="list-style-type: none"> ~Use kind words and actions ~Include others in quiet conversation 	<ul style="list-style-type: none"> ~Be friendly with a kind wave or smile ~Be considerate of others 	<ul style="list-style-type: none"> ~Wait your turn ~Give others privacy 	<ul style="list-style-type: none"> ~Be kind ~Be polite 	<ul style="list-style-type: none"> ~Show appreciation for all staff, helpers and guests 	<ul style="list-style-type: none"> ~Be polite to others when you are waiting ~Be aware of and observe personal space

"Kindness Counts!"

Registration/Transfers

Live outside of Red Hill Boundaries- Intra or and Inter

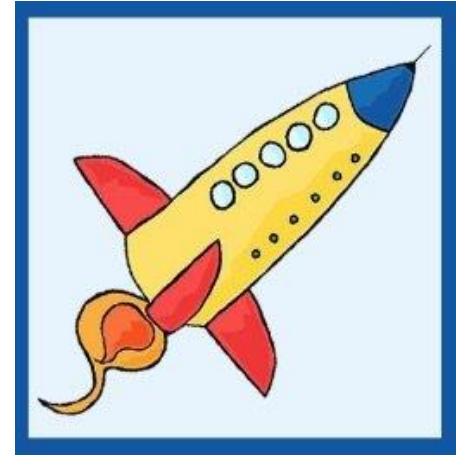
- Jan. 6th- Jan. 24th is Intra or Inter District Transfer Window

Live within Red Hill Boundaries- Residents

- Directions to ENROLLMENT PROCESS – Sarina Cruz- Red Hill Office Manager or Julia Wood- Red Hill Office Assistant
- January 27, 2025 - Registration BEGINS For Residents (online process)
 - Checklists will be available on the table. Great resource with everything you need for enrollment.

Transitional Kindergarten (TK) State Run PreSchool

- ❖ TK Class size: 24 students per class
- ❖ Extended day schedule (same as Kindergarten)
- ❖ 1:12 ratio - One teacher and one instructional aide per class
- ❖ 2 TK Classes at Red Hill
- ❖ 1 Preschool Class - 24 students- 1 adult to every 8 students



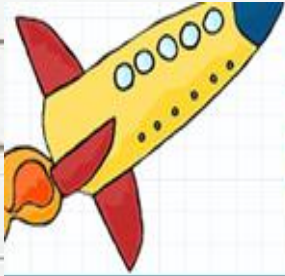
On Campus Child Care

After school care available at our on-site
Extended Learning Program- YMCA
Contact: Red Hill YMCA
Laurie Jimenez (714) 730-7301



Catalyst Kids Before and After school
Program located on campus
Contact: (714) 675-3574

Stay Connected With Us



RED HILL ELEMENTARY SCHOOL
PARENT TEACHER ASSOCIATION

Today, Tomorrow, and Always... Let the Learning Begin!

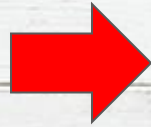


website

Redhillpta.org

[@redhillrockets](https://www.instagram.com/redhillrockets)

Questions?



**Please use index cards and
drop in basket and**

**Ms. Malpass will respond to all
inquiries.**

*Please make sure to include your
email.*

Thank You for Coming!



We Look Forward to Seeing
you in the Fall!