



EDEN PRAIRIE SCHOOLS
Inspiring each student every day™

Eden Prairie High School PROFILE

COMMUNITY

Eden Prairie is a vibrant community of more than 60,000 people located southwest of Minneapolis, Minnesota. With the perfect balance of small town feel and big city amenities, Eden Prairie has consistently been named among MONEY Magazine's "Best Place to Live" in America. In our diverse and thriving community, more than 60% of our population is under the age of 45, and 64% of residents have obtained a bachelor's degree or higher. The future is bright in Eden Prairie!

OUR SCHOOL

Eden Prairie High School (EPHS) is a four-year comprehensive high school with an enrollment of approximately 3,000 students. It's also a Niche.com Top Rated High School in the state of Minnesota - with outstanding programming in academics, activities and athletics. Over 75% of our staff have a master's degree or higher.

We have been named a National School of Excellence, and one of the nation's best high schools by *Newsweek*, *The Washington Post* and *US News and World Report*. We have also been named to the College Board's AP Achievement list. The National Student Clearinghouse shows that a larger percent of EPHS graduates enroll and persist in college than any other public high school in the southwest suburbs of the Twin Cities. Niche.com ranked us among the state's top 3 school districts, and #2 Best Public High School in the state.

OUR SCHEDULE & REQUIREMENTS

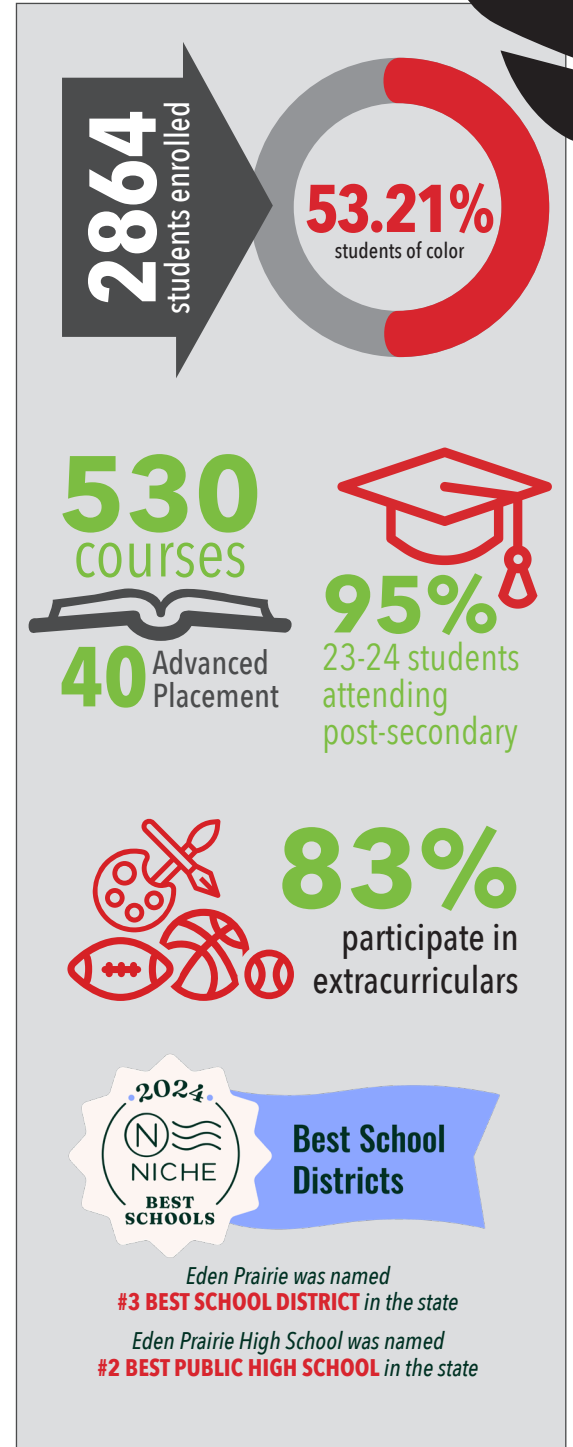
We run a four period block schedule. Each period is 87 minutes long. The year is divided into four nine-week terms, and each course earns one credit per term. As two-term courses are the equivalent of a full year's curriculum in a standard schedule, our students are able to take eight full year courses each year.

There are 54 credits required for graduation. Required classes include: 8 credits of English, 8 credits of Social Studies, 6 credits of Science, 6 credits of Math, 2 credits of Physical Education, 2 credits of Creative Arts, 1 credit in Technology, 1 credit of Health, and 1 credit of Business or Work Experience. More information on our courses and graduation requirements can be found on our website: www.edenpr.org/ephs under "Academics."

OUR ACADEMIC PROGRAMMING

COLLEGE LEVEL

We have a comprehensive catalog of advanced course offerings, with over 40 available college level courses. We also have an academic culture that encourages students to pursue their passion, challenge themselves, and create a schedule that will open doors in their future. For 2022-23, 45% of our students participated in at least one college level course.



17185 Valley View Road, Eden Prairie, MN 55346
Main Office 952.975.8000 • Fax 952.975.8320
www.edenpr.org/ephs

PATHWAYS

As students pursue their educational goals, they have the opportunity to follow focused Pathways to provide the necessary experience and skills for their next steps after graduation.

Each Pathway centers around an area of interest: **Business & Management (B&M), Human & Public Services (HPS), Natural & Applied Science (NAS), Engineering, Technology, & Manufacturing (ETM), Communication & Arts (C&A)** that includes:

- Core and elective course offerings at EPHS (*referred to as Pathway supporting courses*)
- Extracurricular activities related to the interest area
- Capstone courses for 11th and 12th grade students
- Certifications and credentials from area colleges, professional organizations and more
- Opportunities to earn college credit

Pathway Experiences

Students can take individual courses within a Pathway or choose to complete a Pathway and have it included on their official transcript. Completing a Pathway requires 10 credits including a Capstone course. Students have several supporting courses and extracurricular activities to choose from to tailor their plans for their goals.

CAPSTONE

Capstone courses are the culmination of student exploration, learning, and experience within a career pathway. Specifically, students acquire, apply, and demonstrate learning in personalized ways that authentically reflect how professionals think and act within the career field. Capstones center each student's interest, identities, and strengths to provide experiences that will prepare them for specific college, career, and civic opportunities post-graduation. Students can take multiple Capstone courses as long as they have met the prerequisites, and don't need to have completed all Pathway Supporting Courses in order to complete the Capstone.

Each Capstone course is designed to provide:

- Instruction and assessment utilize the resources, tasks, purposes, and audiences regularly found within the career field
- Collaboration with professionals in the field via guest instructors, site visits, and project partnerships
- An opportunity for students to choose how to demonstrate their learning

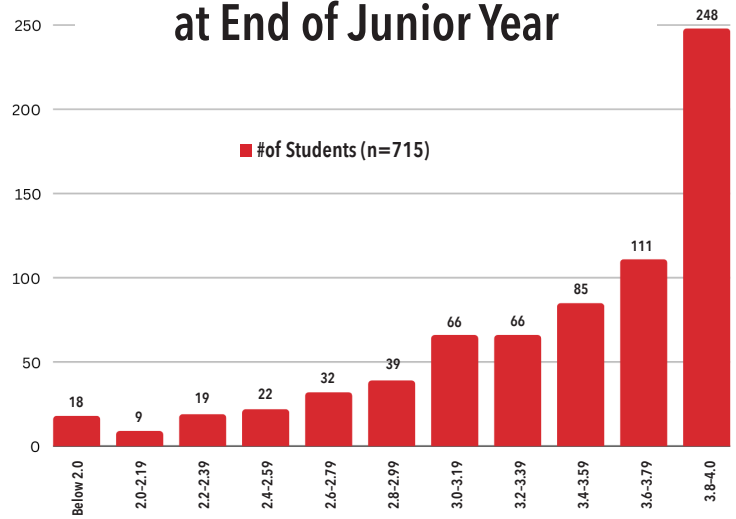
On the road to taking a Capstone course, students will take specialized prerequisite courses (see course guide for prerequisites) that prepare them for the Capstone experience. College credit opportunities are available within each pathway. **Completion of a Capstone course will be noted on a student's transcript.**

Course Catalog

View our comprehensive course catalog on our Registration Hub at edenpr.org/EPHS-courses



Class of 2025 GPA Distribution at End of Junior Year



OUR GRADING & REPORTING

We use a non-weighted system.

A = 90-100% B = 80-89% C = 70-79% D = 60-69% F = below 60%

For pass/no credit designation (starting the 2019-20 school year), P = 60% and above, N/C = below 60%. Prior to the 2019-20 school year, pass/no credit designation, P = 73% and above, and N/C = below 73%. W = Student withdrew from a course after the first two weeks of a term or after the first three weeks of a semester course. NG = Course was dropped at end of term by our Student Support Team.

GPA is calculated on a standard 4-point system (A = 4.0 A- = 3.7 B+ = 3.4 B = 3.0, etc.). Students at Eden Prairie High School do not receive individual class rank.

CLASS OF 2024:

- 95% report attending 2-or 4-year colleges.
- ACT English: 22.0, ACT Math: 22.3, ACT Reading: 23.3, ACT Science: 22.8, ACT Composite: 22.7.
- The class includes 9 National Merit Semifinalists, 14 Commended students, & 65 National AP Scholars with Distinction.

ADMINISTRATION

Principal - Dr. Jaysen Anderson

Associate Principals - Lomumba Ismail, Victor Johnson, Mariah Pringnitz

COUNSELING STAFF

Counselors are assigned by student alpha, listed on our HS web page: www.edenpr.org/eden-prairie-high-school/student-life/counseling