

# TULSA PUBLIC SCHOOLS

## 2021 Bond Oversight Committee

January 30, 2024

**Greg Shaw**, Chair, Citizen Bond Oversight Committee

**Mohazobyn Panchoo**, Bell Principal

**Robert Burton**, Dir. Client Services, IT

**Steve Blakley**, Dir. Transportation

**Marcus James**, Mg. Fleet Services

**Chris Hudgins**, Exec. Dir. Bond

**Ellen Duecker**, Bond Project Mgr.





**Authorized: \$414MM**

---

**Received: \$192.5MM**

**Remaining: \$221.5MM**

**Next Bond Release:  
March, 2024 \$35MM**

**2021 Bond  
Progress:  
Budget**

**46% funds  
received**

**6.5 years for  
project  
completion**

# 2021 Bond: Available Funds by Project

1/26/24

<b>ACADEMICS</b>	INSTRUCTIONAL LEARNING RESOURC	1,219,799.46
	TEXTBOOKS & LEARNING MATERIALS	4,253,676.42
	EXCEPTIONAL STUDENT/SPEC NEEDS	568,523.25
	PROF LEARNING FOR TEACHERS	808,633.36
	AUDITORIUM IMPROVEMENTS	194,062.62
	LANGUAGE LEARNING RESOURCES	19,705.03
	SCHOOL PROJECT FUNDS	2,688,542.15
	POSTSECONDARY CAREER EDUCATION	581,299.76
	EARLY CHILDHOOD EXPANSION	1,374,658.40
	PROGRAM EXPANSIONS	699,052.94
	SCOREBOARDS/SOUNDSYS REPLACMNT	5,319.36
	WELLNESS AND PE	1,003,972.28
	FINE ARTS	122,126.66
	LIBRARY DIGITAL/PRINT RESOURCE	122,526.73
<b>TECHNOLOGY</b>	SECURITY CENTRAL OFFICE NEEDS	729,501.89
	MASS COMMUNICATION AUDIO/VISUA	324.43
	COMPUTERS/IWB & PERIPHERALS	1,102,808.51
	ACCESS DOORS	1,203.25
	CAMERAS/RADIOS/DISPATCH	408,963.42
	ALARMS	1,750,282.33
	BOND MANAGEMENT FEES	455,721.53
	PHONE/INTERNET NEEDS	4,847.11
	SOFTWARE/APPLICATION SUBSCRIPTION	325,056.31
<b>FACILITIES</b>	HVAC	52,957.55
	SECURE ENTRIES & FENCING	816,645.52
	ACCESSIBILITY	68,261.63
	PAVING	327,125.55
	ROOFING	12,661.58
	DINING/KITCHEN IMPROVEMENTS	183,519.94
	FURNITURE	1,095,430.37
	INTERIOR RENOVATIONS	987,023.58
	PLANNED-UNBID/ARCHITECTS/CONTINGENCY	7,373.77
	PROFESSIONAL SVC/BOND MNMT/ISSUANCE FEES	403,810.21
<b>TRANSPORTATION</b>	SCHOOL BUSES / ROUTE MAIN	207,875.85

FYI...

## Bond Projects Follow Federal, State, and Board Guidelines for Proposals and Bidding

**Construction projects of \$100,000 and over follow Public Competitive Bid Act of 1974, Title 61**

- Sealed Bids and bid security
- Advertized twice in the Tulsa World twice for 21 days

**Non-construction projects over \$50,000, utilize a Requests for Proposal, RFP, process and handled through the Purchasing Dept.**

- To date the district has awarded 126 contracts through either RFP or the Public Competitive Bid process.

**Smaller projects follow board policy and require multiple competing bids.**



## Project Cost Increases...

Construction costs have risen dramatically since the bond plans were finalized in December 2020.

Approach: Work with school leaders to prioritize needs and adjust project scope and stay within contingency adjusted budget.





**Student and Staff Technology**

**School and Classroom Technology**

**Network Infrastructure Upgrades**

**Cloud Based Services**

**Student and Classroom Technology: \$90.7MM**

# Student, Teacher and Staff Technology & Systems

**The bond pays for nearly every piece of technology and every technology system in the district!**

- *Vital to the daily operations of our school!*
- *Critical to our safety systems!*

- Student computing devices
- Teacher and staff laptops
- Classroom technology
- Office equipment
- Printers
- Telephones
- Intercoms
- Network systems
- Lightning prediction systems
- Firewall protection ... And more!







# COMPLETED PROJECTS

## Data Center Core Switching Upgrades - Oct. 2023

- ❖ Replaced critical network switches in data centers to enhance network traffic.
- ❖ Expanded speed capacity to 100 Gbp for data received, transmitted & stored.

## Outside Camera Upgrades – Oct. 2023

- ❖ Replaced 440 lens caps providing viewing clarity from “sun bleached” views.

## Digital IP Intercom System - Dec. 2023

- ❖ Remote management of the Bells/Tones & digital clocks.
- ❖ Ability to send mass communications district-wide.

## Digital Marquees

- ❖ 41 Sites with new Marquee.
- ❖ Remote programming, remove or post content at anytime.

## Managed Print Services (*printer/copy/fax*)

- ❖ Replace 248 out of warranty devices - Phase 1
- ❖ Phase 2, 110+ devices, scheduled Spring 24'





# TECHNOLOGY PROJECTS IN PROGRESS

## ▣ 800 MHz Two-way Radio System

- ❖ Increases power/coverage of two-way radios while providing access to a wider range of communication towers across the Tulsa Metropolitan area.
- ❖ Enhances communication & interoperability between TPS Campus Police/Transportation with Tulsa Police, Fire, EMS, allowing for a faster response to emergency situations.

# UPCOMING PROJECTS



Interactive  
Display  
Upgrades -  
Fall 2024

3,500 Devices



Surveillance  
Camera  
Upgrades -  
Fall 2024

3,500 Devices



Computing  
Device  
Upgrades -  
Fall 2024

Laptop  
Chromebooks

**School Bus  
Replacement**

**Type A Student  
Transport Vehicles**

**Bus Replacement  
Parts**

**Software &  
Services**

**Service Fleet  
Vehicles**



**Transportation \$17.3MM**



# Transportation



**28 School Buses**

**26 CNG** 14 *received* 12 *in progress*.  
2 electric full size buses (federal funding) *received*

**18 SUVs for Transportation**

**18 *in progress*** SUVs for student transport:  
College/Careers , Senior Highs, McKinney Vento, Athletics,  
School Field Trips

**10 Class A 14-Seat Buses**

**10** 14-Seat Passenger buses for student transport:  
Deliveries: Jan. 25-31, 2024  
College/Careers, Transportation, Athletics, and School Field Trips

**116 Service vehicles multiple types**

*In progress* 30% *received* including 10 *campus police vehicles*  
Includes replacement vehicles (pick-ups, SUVs, trucks, mowers, and other specialized service vehicles) for multiple departments including police cars

**Vehicle Parts**

Budget for service parts, tires, etc. *ongoing*

**Software/Tech**

Includes Zonar tracking, RFID bus badges, and other software systems *ongoing*





## Expanding Opportunities for Student Small Group Experiences with Type A Buses and SUVs

- **10, Type A 14 passenger buses arriving this week.**
- **21 SUVs scheduled March /April**

Available for check-out from TPS Transportation Dept.

District has already trained over 120 school staff members to qualify to drive.

Does not require a CDL but does require:

- state approved training
- background check on MVR (motor vehicle report)

## TPS Standard Fleet:

- \*CNG buses 82 (45%)
- \*Diesel 98 (54%)
- \*Electric 2 (1%)



# TPS Transportation

## Fuel Cost:

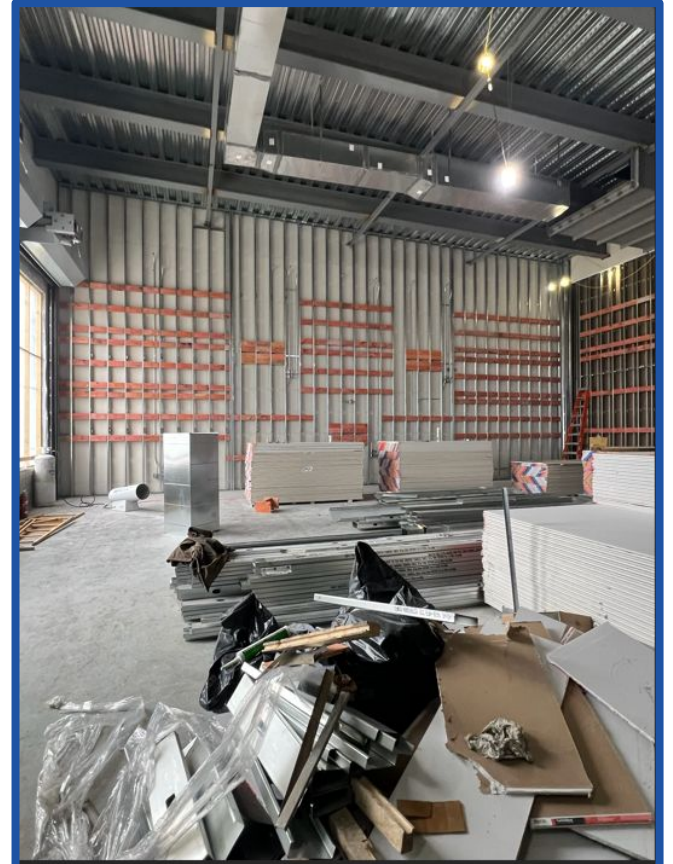
- Diesel: Onsite \$2.93  
Off site \$3.41
- CNG gal. equivalent est.:  
Onsite \$1.00  
Off site \$1.83.



2015 Bond investment in CNG fueling station is still paying off!



## Webster: FEMA Storm Shelter Part of Career Ed & Fine Arts Projects





## 2021 Summer Projects

**Interior Renovations:** Wayman Tisdale & Walt Whitman

**HVAC:** Edison Middle and Mayo/Wilson

**Exterior Entry Remodels:** McLain & Hale Senior High

**Kitchen Dining Renovation:** McLain (Tisdale & Whitman)

**Science Room Upgrades:** Memorial HS

**Elevator Upgrades:** Webster, BTW, Hamilton, Hale MS

**Secure Entry Remodel:** Rogers Annex

**Turf Replacement:** McLain and Central

**Multi Sport Facility:** Hale

**Tennis Court replacement:** Memorial

**Career, AgEd Lab and Band Room:** Webster





**Safety &  
Security**

**School  
Renovations &  
Roofing**

**Accessibility**

**Multipurpose  
Dining & Kitchen**

**Air Quality,  
Ventilation &  
Conditioning**

**Safe Learning Environments \$166MM**



- Bell Elementary *complete '23*
- Burroughs Elementary *complete '23*
- Hawthorne Elementary *complete '22*
- Sequoyah Elementary *summer '25*
- Skelly Elementary *complete '22*
- Thoreau Demonstration *summer '25*
- Tisdale Elementary *summer '24*
- Whitman Elementary *summer '24*
- Eugene Field: partial *complete '22*
- Transportation: partial *summer '25*

Furniture budgets for all schools: *40% allocated to sites*





## Interior Renovations:

11 Projects 5 complete

Typically includes new...  
ceilings, lights, flooring, paint,  
cabinetry, restrooms, kitchen and  
more.



Skelly Primary classroom BEFORE & AFTER



## Roofing:

19 projects

12 Complete

1 in progress



Lanier



Kendall-Whittier

- Booker T Washington High *summer '25*
- Burroughs Elementary *summer '25*
- Carver Middle *summer '24*
- Cherokee (Legacy Upper) *complete '23*
- Disney Elementary *complete '21*
- Edison High *complete '22*
- Eisenhower International *complete '23*
- Eliot Elementary *complete '21*
- Greenwood Leadership *complete '22*
- Lanier Elementary *complete '22*
- MacArthur Elementary *complete '22*
- McLain High *summer '25*
- Peary Elementary *complete*
- Phoenix Rising *summer '24*
- Rogers Fieldhouse *summer '25*
- Skelly Elementary *complete*
- Street School *complete*
- Webster High *in progress*
- Webster Fieldhouse *complete*

## Accessibility, ADA Improvements

- Central Middle/High *summer '25*
- East Central High *restrooms complete '22*
- Edison High *complete '22*
- Education Service Center
- Hale High *complete '23*
- Marshall Elementary *summer '24*
- McLain High *summer '24*
- Tulsa Learning Academy *summer '25*
- Tulsa Met (restrooms) *summer '25*

### District-wide where needed:

- Exit modifications *in progress*
- Elevator/chair lift refresh and replacements
  - Wright elevator, *complete '23*
  - Elevator upgrades: *BTW, Hamilton, Hale MS, Sequoyah, Webster, Thoreau in progress*
- Parking lot resurfacing: multiple annually *in progress* Sidewalk improvements *in progress*
- LED lighting upgrades *complete 6/22*



*Hawthorne Elementary Summer 2022*

Create “hard-working spaces” in secondary schools as well as meeting district plan to refresh aging kitchen equipment and infrastructures.

- Central Middle/High *summer '25*
- East Central High *summer '25*
- Edison High *complete '22*
- McLain High *summer '24*
- Memorial High *complete '23*
- Rogers Middle/High *complete '23*
- Webster Middle/High *summer '24*
- Washington High *complete '22*
- Burroughs *complete '23*
- Eliot *complete '23*
- Hawthorne *complete '22*
- John Hope Franklin *complete '23*
- Skelly *complete '22*
- Tisdale *summer '24*
- Whitman *summer '24*
- District bakery *summer '25*







## Kitchen renovations to meet current code and modernize are extensive:

- Full infrastructure rebuild
- New cooking and refrigeration equipment
- New serving lines

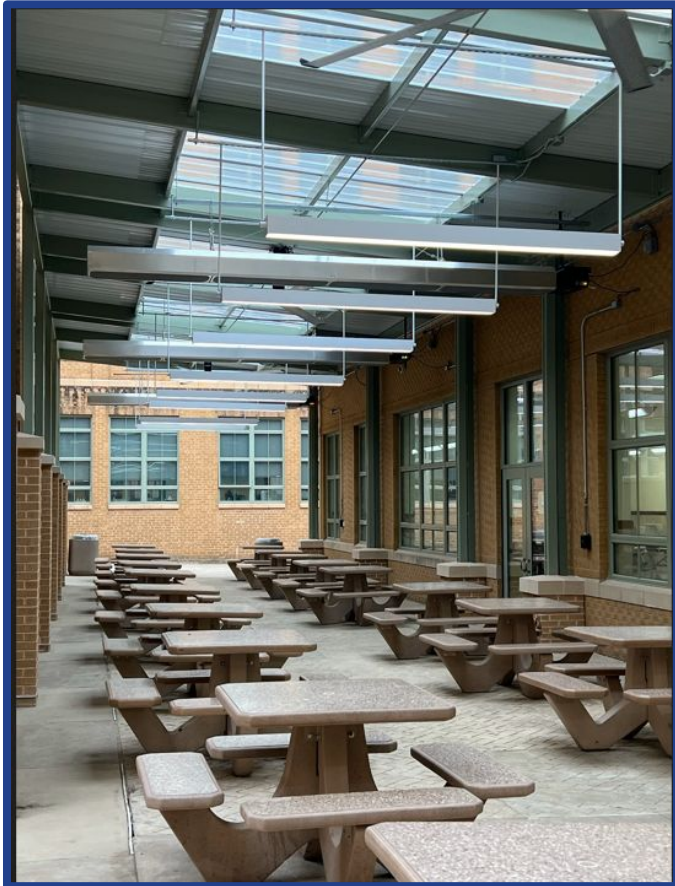
*Memorial Sr. completed this fall*





## Dining & Kitchen Improvements:

Update and leverage dining space into multi-purpose areas



*Rogers new covered outdoor dining area*



*Edison Senior remodel*



## Security Improvements: Enhanced Secure Entries 73 sites complete

*Started secure entry remodels in the 2015 bond with elementary schools.  
Continue that work with secondary schools in the 2021 bond.*

- Central Middle/High *complete*
- East Central Senior High *complete '23*
- Hale Senior High *complete '23*
- Memorial Senior High *complete '23*
- Memorial Middle School *complete '23*
- Webster High *complete '23*
- North Star/Parent Resource Center *complete '23*
- Tulsa MET *complete '23*
- Phoenix Rising *complete '23*
- Legacy lower and upper *complete '23*
- Kendall Whittier *complete '23*
- Rogers Annex *summer '24*
- Webster MS *summer '24*



## Security Improvements: Cameras, Radios, Security Systems

*Additional safety improvements have been made to multiple systems including:*

- New weapons detection systems for secondary schools *complete '23*
- Added additional access controlled doorways in elementary schools *complete '23*
- New intrusion alarms *94 complete 4 in progress*
- New fire alarm systems *55 complete 5 in progress*
- New 800 MHZ emergency radio system *in progress.*
- Security cameras (*TPS operates 3,449 cameras*) *ongoing*







# Security Improvements: Fence Replacements

28 complete 10 planned



<i>Phase 1 '21</i>	<i>Phase 2 '22</i>	<i>Phase 3 '23</i>
Rogers	Springdale	Bell
Hawthorne	Salk	Carnegie
Burroughs	Hoover	Cooper
Disney	Celia Clinton	Eliot
Clinton West	Kerr	Grissom
Marshall	Lewis & Clark	Mitchell
	Tulsa MET	Peary
	Lindbergh	Sequoyah
	McKinley	Unity
	Robertson	Whitman
		Patrick Henry



# Secondary School Entrance Improvements

Along with enhanced secure modifications, the bond plan included updating several secondary school facades to welcome students and families.



Memorial entry in progress.

## Senior Highs:

- East Central *complete*
- Memorial *in progress*
- McLain *in progress*
- Hale

## Middle Schools:

- Thoreau
- Memorial
- Hale
- East Central
- Carver



**Inclusive and  
Equitable Schools**

**High Quality  
Instructional  
Materials**

**Preparing Young  
Tulsans for the  
Future**

**Strengthening Arts  
& Athletics**

**Investing in  
Tulsa's Teachers**

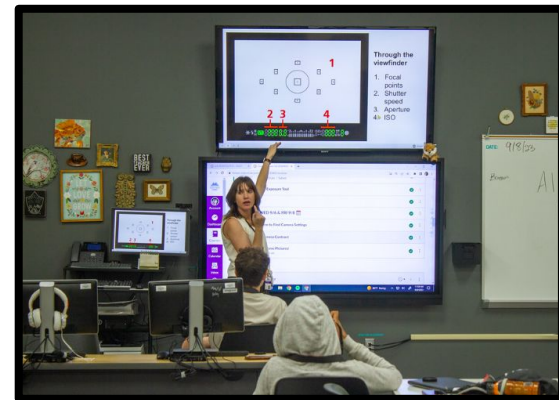
**Expanding  
Successful  
Programs**

**Quality Teaching & Learning Materials & Programs \$139.3MM**

# Quality Learning Materials & Programs

## Textbooks and Curriculum Materials

- English Language Arts; Elem *complete 2022*
- English Language Arts: Secondary *complete 2023*
- World Languages: Secondary *complete 2023*
- Math k-12: **in progress**
- District wide software supports—**annual purchases**
  - Learning management platform *Canvas*
  - College/Career readiness/planning software *Naviance*
  - Online credit accrual and recovery course platform *Edmentum*
  - Individualized online platform in middle and sr high individualized learning platform *Exact Path*
  - Ongoing purchases to follow state adoption cycle and specialized classes for all schools



*Sample Projects: Not a complete list*

# Quality Learning Materials & Programs

## Language and Cultural Services

Provides resources for ELL, English Language Learners, dual language learners and world language students

- English Language Development, ELD, Elementary *complete 2022*
- English Language Development, ELD, Secondary *complete 2023*
- Translation equipment sets for meetings *complete 2023*
- Digital supplemental support programs for English Language Development, ELD and for Multi-language learners *Ongoing annual purchases*
  - *Ellevation, Istation, Lalilo, TPRS, Senior Wooly, Achieve 3000, Imagine Learning and more!*

*Sample Projects: Not a complete list*





# Quality Learning Materials & Programs

## STEM and Science Lab Upgrades

- New science lab hands-on materials and equipment for all classes *complete '23*
- Secondary science lab upgrades Hale MS, Hale HS, East Central HS, McLain HS *complete '22 & '23* Remaining secondary schools *in progress*

## Post-Secondary College & Career Expansion

- Career Tech Labs: computer upgrades at all program sites *equipment complete '23* Lab furnishing refresh *in planning*
- Webster Agricultural ed: *in progress for 7/24*
- Hale construction lab expansion *complete '23*



# Quality Learning Materials & Programs

## Library Resources

- Library books and materials: *ongoing*
- Library tech equipment upgrades: *ongoing*
- Subscriptions to online research resources: *ongoing*
- District library, textbook/resource, and asset management system - *annual renewal*
- School library remodels/refreshes *where needed*
  - Webster, Central, Burroughs, Carver, L&C and more to follow

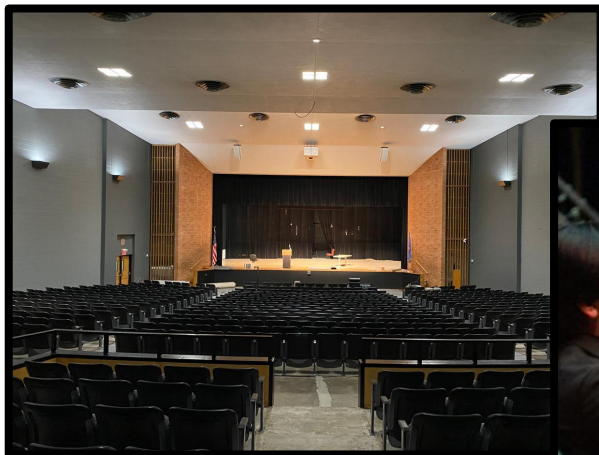




# Quality Learning Materials & Programs

## Fine arts

- Auditorium improvements 25 schools *in progress*
- Band uniforms *complete '23*
- School requested projects to address specific needs for each school *ongoing*
- Webster band addition *in progress*



*Sample Projects:*

# Quality Learning Materials & Programs

## Program Expansions

- *New Montessori programs at Grissom **Opened program***
- *New Montessori program at Eugene Field. **Opened program***
- *Continued support for Emerson Montessori.*

## Early Childhood Education Expansion

- *Skelly Primary & Hawthorne modifications **complete***
- *Whitman **in progress***





## Wellness / Playgrounds:

*Additional improvements planned*

12 Projects 12 Complete

### *New Play Structures at:*

- Carnegie *complete*
- Council Oak *complete*
- Cooper *complete*
- Eugene Fields *complete*
- Hawthorne *complete*
- John Hope Franklin *complete*
- Kendall Whittier *complete*
- Kerr *complete*
- McKinley *complete*
- Project Accept *complete*
- Skelly *complete*
- Salk *complete*

### *AND additional work in planning to ...*

- Replace wood chip fall zone with rubberized base at all sites where needed
- Install and upgrade walkways to play areas to be accessible at all sites where needed.



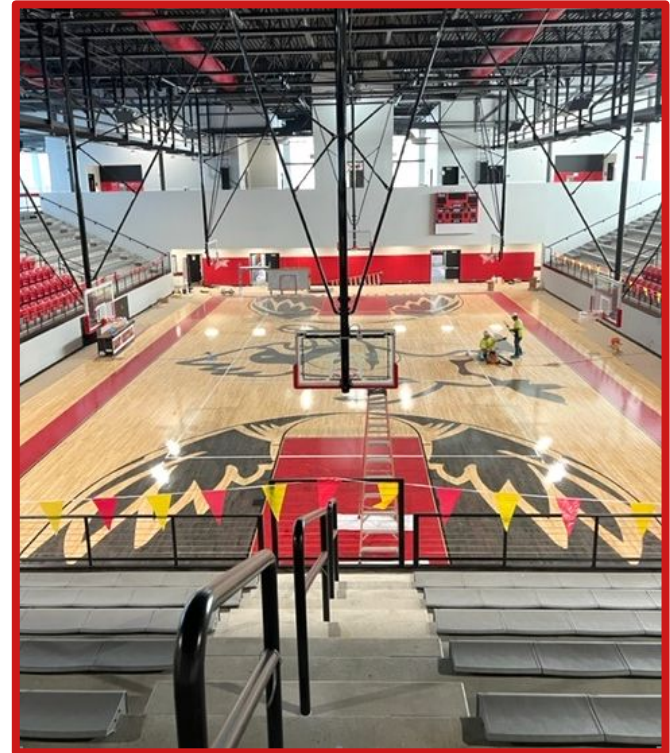


# Athletics: 28 Construction Projects

*Additional projects ongoing*

10 complete 2 in progress

BTW High	<ul style="list-style-type: none"><li>● Tennis Courts <i>complete</i></li><li>● Stadium Waterproofing/refresh <i>complete</i></li></ul>
Central Middle / High	<ul style="list-style-type: none"><li>● Turf Replacement <i>in progress</i></li><li>● Track resurfacing <i>summer '25</i></li><li>● Tennis Court Re-purpose</li></ul>
East Central High	<ul style="list-style-type: none"><li>● Scoreboard/ Time Clock replacement <i>complete '23</i></li><li>● Stadium Waterproofing/ refresh <i>summer '25</i></li><li>● Fieldhouse &amp; YMCA collaboration <i>complete '22</i></li></ul>
Edison Middle High	<ul style="list-style-type: none"><li>● Turf Replacement <i>summer '25</i></li><li>● Track Resurfacing <i>summer '25</i></li><li>● Tennis Court Re-topping <i>in progress</i></li><li>● Sound System Fieldhouse <i>complete '22</i></li></ul>



East Central Fieldhouse

## Athletics...Continued

Hale High	<ul style="list-style-type: none"> <li>• Turf replacement, practice field <i>complete '22</i></li> <li>• Multi-purpose facility <i>in progress</i></li> </ul>
Mclain High	<ul style="list-style-type: none"> <li>• Turf replacement, Driver Stadium <i>in progress</i></li> <li>• Track Resurfacing <i>summer '25</i></li> <li>• Tennis court repurposing <i>summer '25</i></li> <li>• Stadium waterproofing/refresh <i>summer '25</i></li> </ul>
Memorial High	<ul style="list-style-type: none"> <li>• Scoreboard/ Time Clock replace <i>complete '23</i></li> <li>• Tennis Court replacement <i>in progress</i></li> <li>• Stadium waterproofing/refresh <i>summer '25</i></li> </ul>
Rogers Middle / High	<ul style="list-style-type: none"> <li>• Turf replacement-Rogers Stadium <i>complete</i></li> <li>• Fieldhouse soundsystem <i>complete</i></li> <li>• Visitors bleachers &amp; restroom <i>under contract</i></li> <li>• Auxiliary gym (formerly) All-weather softball field</li> </ul>
Webster Middle / High	<ul style="list-style-type: none"> <li>• Turf replacement <i>summer '25</i></li> <li>• Fieldhouse sound system <i>complete '22</i></li> <li>• Stadium waterproofing/refresh <i>summer '25</i></li> </ul>



BTW

Rogers







VIEW INSIDE SOCCER BUILDING LOOKING NORTH



VIEW LOOKING WEST

## Hale Multi-Sport Complex

March Groundbreaking

49,000 sq. ft.

Estimated completion April, 2025

Includes FEMA storm shelter



VIEW INSIDE PRACTICE GYM LOOKING WEST



# *Thanks Tulsa Voters for Supporting Tulsa's Students!*

## **2021 Citizen Bond Oversight Committee Members**



Barney James  
Becky Gligo\*  
Bill Richert\*  
Blanca Delgado  
Carlos Bejarano  
Casey Robinson  
Dominic Walters  
Eddie Evans  
Erica Irvine  
Dr. Erica  
Townsend-Bell  
Dr. Kristen Oertel\*  
Emily Hall (Hutton)  
Greg Shaw\*  
James Stuart  
Joanna Lein\*  
Josh Roby\*

Justine McIntosh  
Katie Henke\*  
Kim Hubler  
LeeAnne Jimenez\*  
Lora Boyle\*  
Mandy Winton  
Maria Barnes  
Nancy Leonard\*  
Niki Grauberger\*  
Peggy Spillman  
Phil Armstrong  
Scott Merrill  
Signee Bland  
Steve Grantham\*  
Tina Kaminski  
Vanessa Rodriguez\*

\*Also members of 2021 Bond Development Committee