

TULSA PUBLIC SCHOOLS

Citizen Bond Oversight Committee

January 11, 2022

Greg Shaw, Chairperson

TPS Staff:

Jorge Robles, Chief Operations Officer

Chris Hudgins, Exec. Dir. Bond

Ellen Duecker, Bond Project Mgr.

Robert Burton, Dir. IT Client Services

Maddie Carter, Admin. Asst.





Today's Agenda

- Welcome & Introductions: Greg Shaw
 - Committee introductions (members absent in November)
- Approval of minutes
- TPS District Overview: Jorge Robles
- 2021 Bond “Book” of Project Allocations: Ellen Duecker
-ran out of time. Adjourned
- (March 8th meeting) Bond Projects Reporting: Greg Shaw and Staff
- Questions, Suggestions, Discussion
- Adjourn



2021 Citizen Bond Oversight Committee Members

Carry-Over Oversight Committee Members

Barney James
Bill Richert*
Eddie Evans
Erica Irvine
James Stuart
Josh Roby*
Katie Henke*
LeeAnne Jimenez*
Peggy Spillman

New Oversight Committee Members

Becky Gligo*
Blanca Delgado
Carlos Bejarano
Casey Robinson
Dominic Walters
Doug Collins*
Dr. Erica Townsend-Bell
Dr. Kristen Oertel*
Emily Hall (Hutton)
Greg Shaw*
Joanna Lein*
Justine McIntosh
Kim Hubler

Lora Boyle*
Mandy Winton
Maria Barnes
Nancy Leonard*
Niki Graubeger*
Phil Armstrong
Sally Perez*
Scott Merrill
Signee Bland
Steve Grantham*
Tina Kaminski
Vanessa Rodriguez*

*Members of 2021 Bond Development Committee



ABOUT OUR DISTRICT



78 UNIQUE LEARNING COMMUNITIES

45
ELEMENTARY
SCHOOLS

10
JUNIOR HIGH
AND MIDDLE
SCHOOLS

9
HIGH
SCHOOLS

7
ALTERNATIVE
SCHOOLS

6
DISTRICT-
AUTHORIZED
CHARTER
SCHOOLS

1
PARTNERSHIP
SCHOOL

BOARD OF EDUCATION*

*Membership as of March 2021

PRESIDENT STACEY WOOLLEY (DISTRICT 1)
board1@TulsaSchools.org

VICE PRESIDENT SUZANNE SCHREIBER (DISTRICT 7)
board7@TulsaSchools.org

JOHN CROISANT (DISTRICT 5)
board5@TulsaSchools.org

SHAWNA KELLER (DISTRICT 4)
board4@TulsaSchools.org

JUDITH BARBA PEREZ (DISTRICT 2)
board2@TulsaSchools.org

JERRY GRIFFIN (DISTRICT 6)
board6@TulsaSchools.org

JENNETTE MARSHALL (DISTRICT 3)
board3@TulsaSchools.org





ABOUT OUR STUDENTS



32,569 STUDENTS*

RACIAL/ETHNIC DISTRIBUTION*

- African American **23%**
- American Indian or Alaska Native **5%**
- Asian/Pacific Islander **2%**
- Hispanic/Latinx **37%**
- Multi-racial **10%**
- White **23%**



Economically disadvantaged

81%



Gifted and talented

11%



Students with disabilities

16%



Multilingual learners

26%



*as of Oct. 2020



Our role in supporting ALL students

It is our responsibility to create conditions that bring to life our shared belief that “All Kids Can” and live out our value of equity.

Every decision we make either closes gaps, maintains the status quo, or widens gaps for students furthest from opportunity.

Every decision, no matter how small, has ripples we may not foresee or understand based on our perspective, identity and experiences.



There are different factors shape our students' support needs

Student Level Domain

Gender
Race/Ethnicity
English Learner
Student Mobility
Attended PreK

Economic Disadvantage
Homeless
Special Alert (i.e.medical)
Special Education
Suspensions

Neighborhood Health

Built Environment Score
Life Expectancy
Mental Health/Substance Abuse
Visits

ER Visits
Infant Mortality Rate
Teen Pregnancy
Low Birth Weight

Neighborhood SES

% of pop with less than a high school education
% of pop below 100% FPL
% of pop below 200% FPL

Unemployment Rate
Receipt of SNAP (food stamps)
Housing Cost Burdened
Housing Quality & Condition

Neighborhood Safety

Violent Crime (aggravated assault, homicide, rape, robbery)
Narcotics crime
Gun-related mortality
Arrests

Neighborhood Custodianship

Nuisance/311 Complaints
Negative land use
Built Environment Nuisance

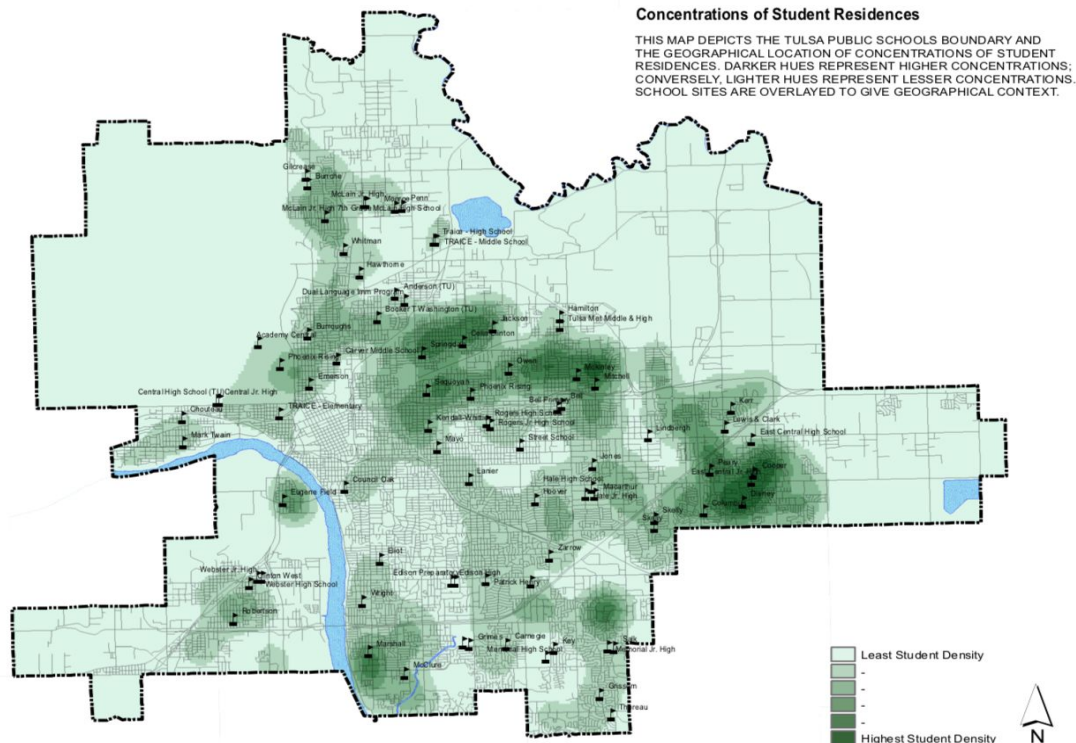
Neighborhood Access

Walkscore
Transit
Grocery Stores

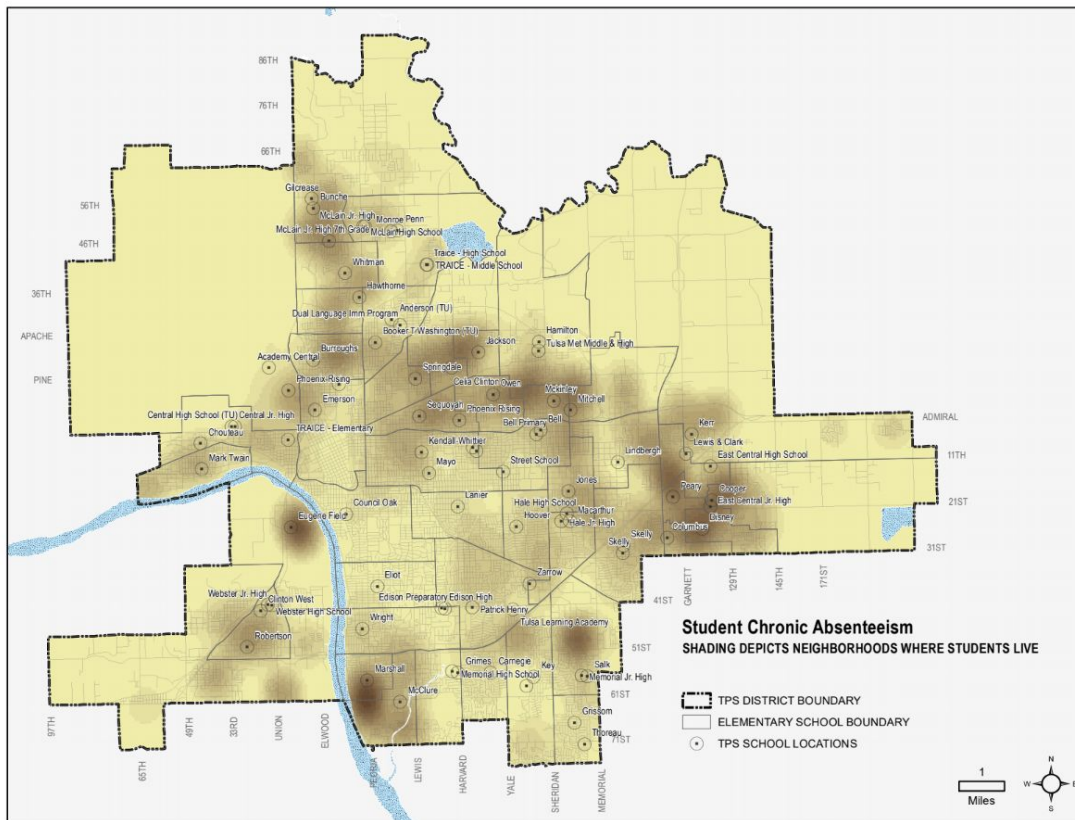
Vehicle Access
Industrial/Oil Land site
Highway
Parks, Trails, Schools



Landscape of Specific Indicators - Student Density

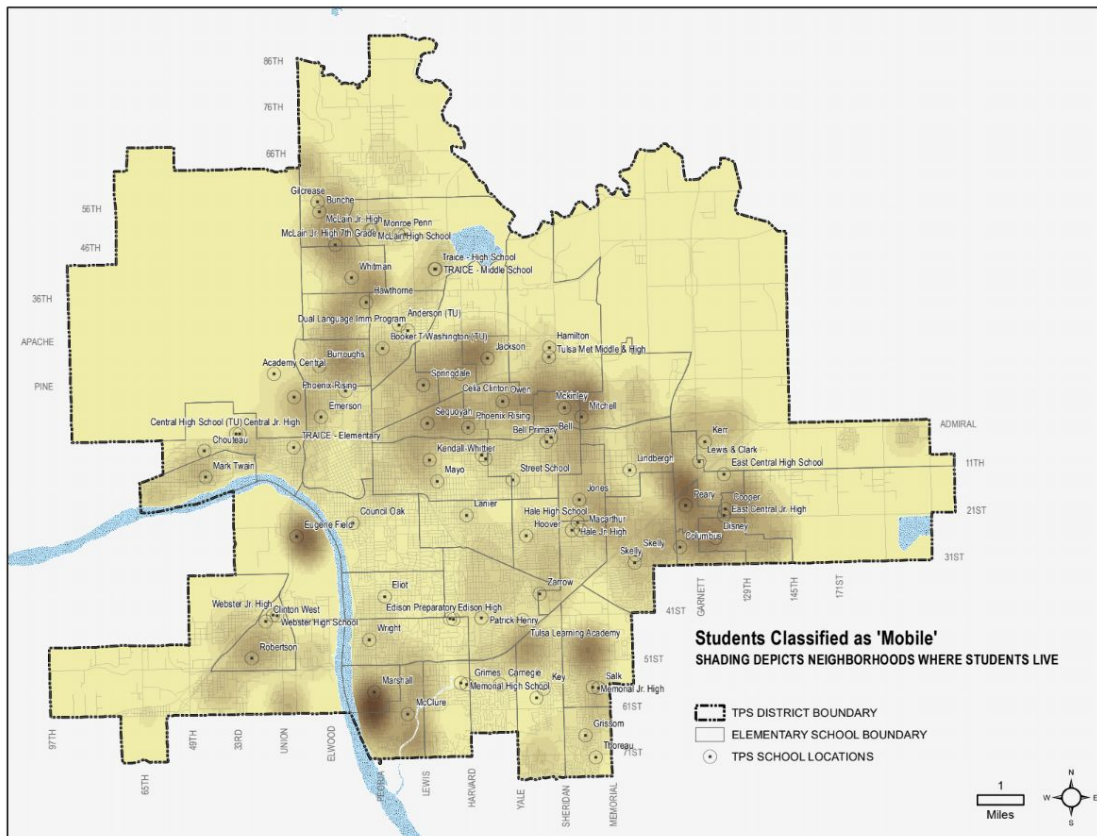


Landscape of Specific Indicators - Chronic Absenteeism

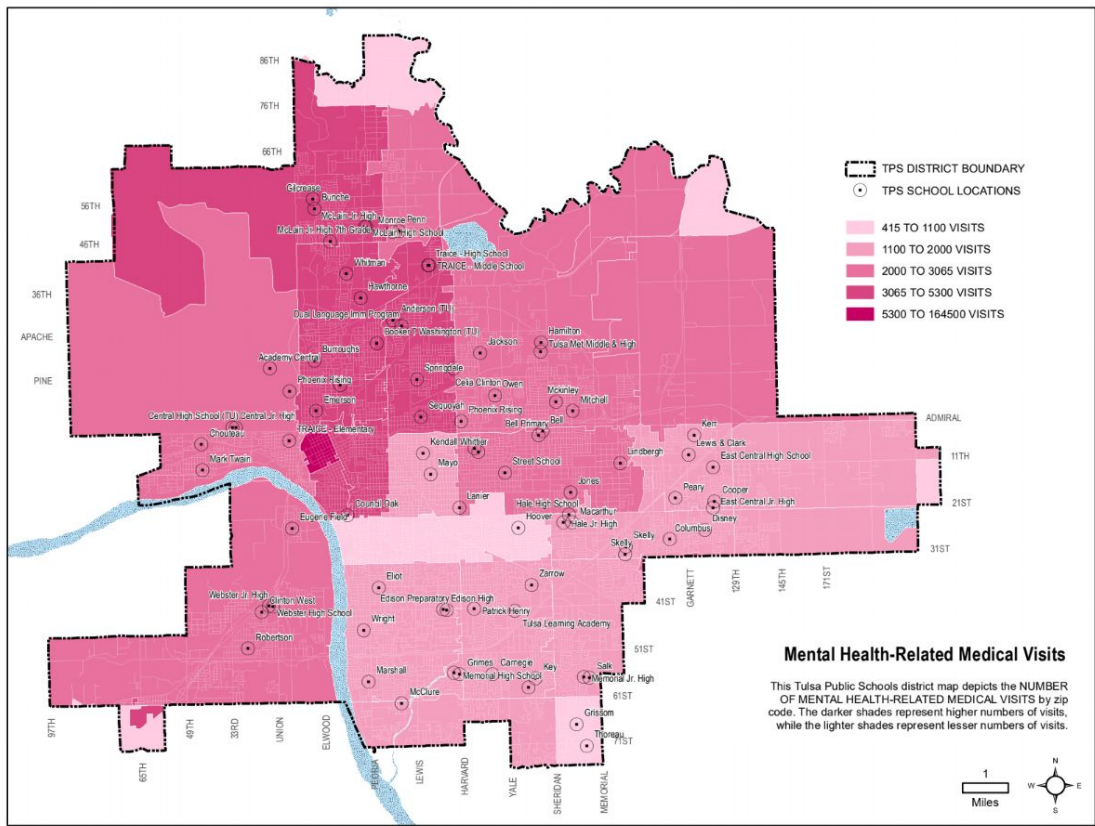




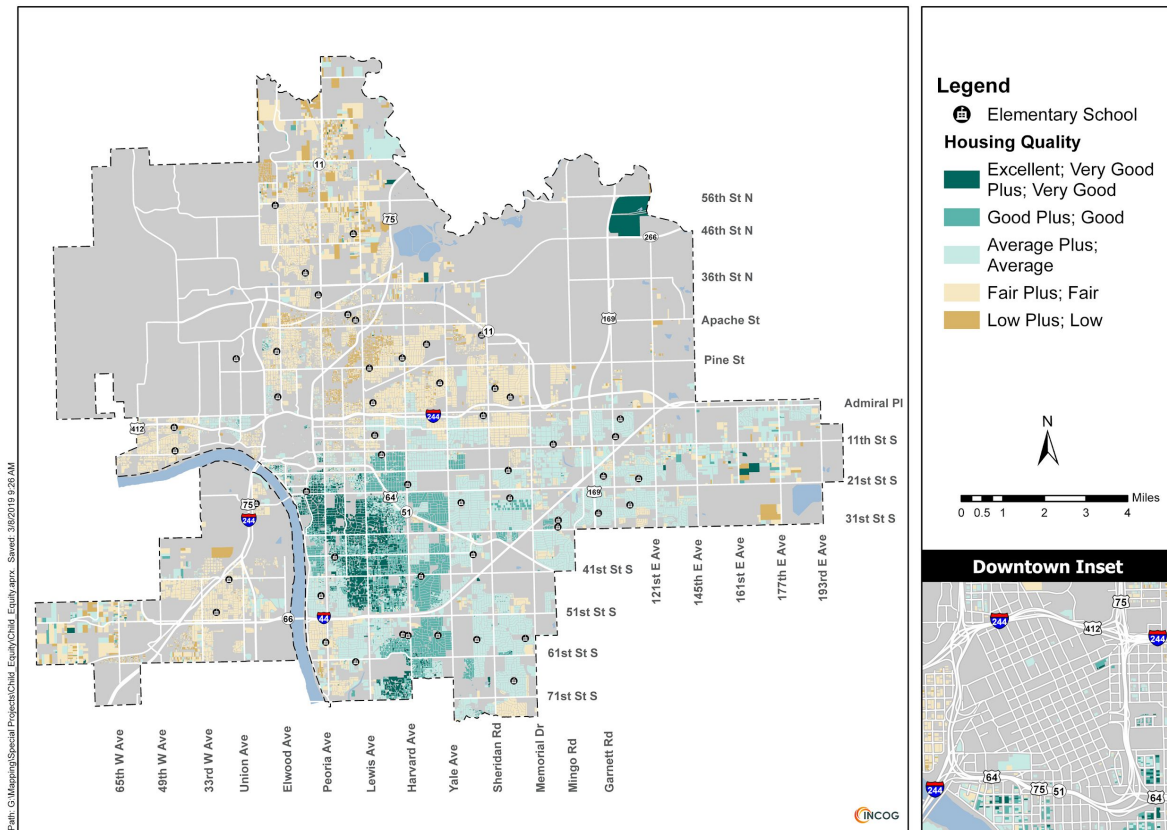
Landscape of Specific Indicators - Mobility



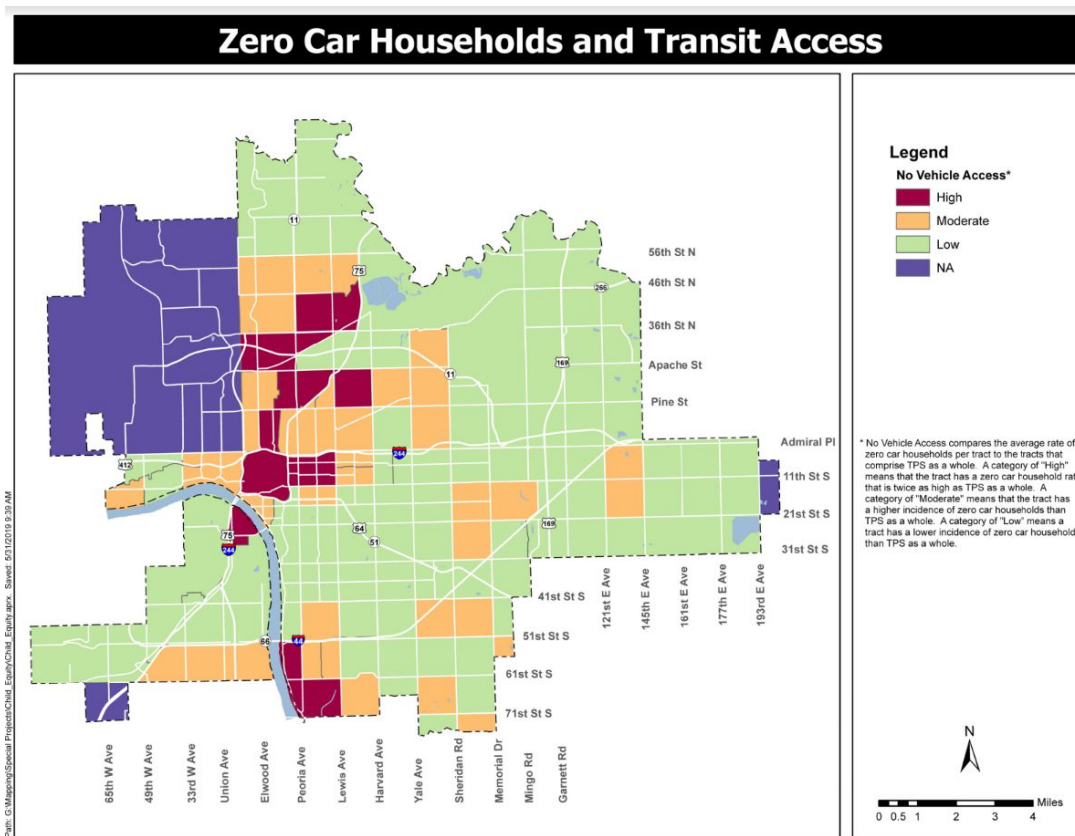
Landscape of Specific Indicators - Mental Health/Medical



Landscape of Specific Indicators - Housing Condition



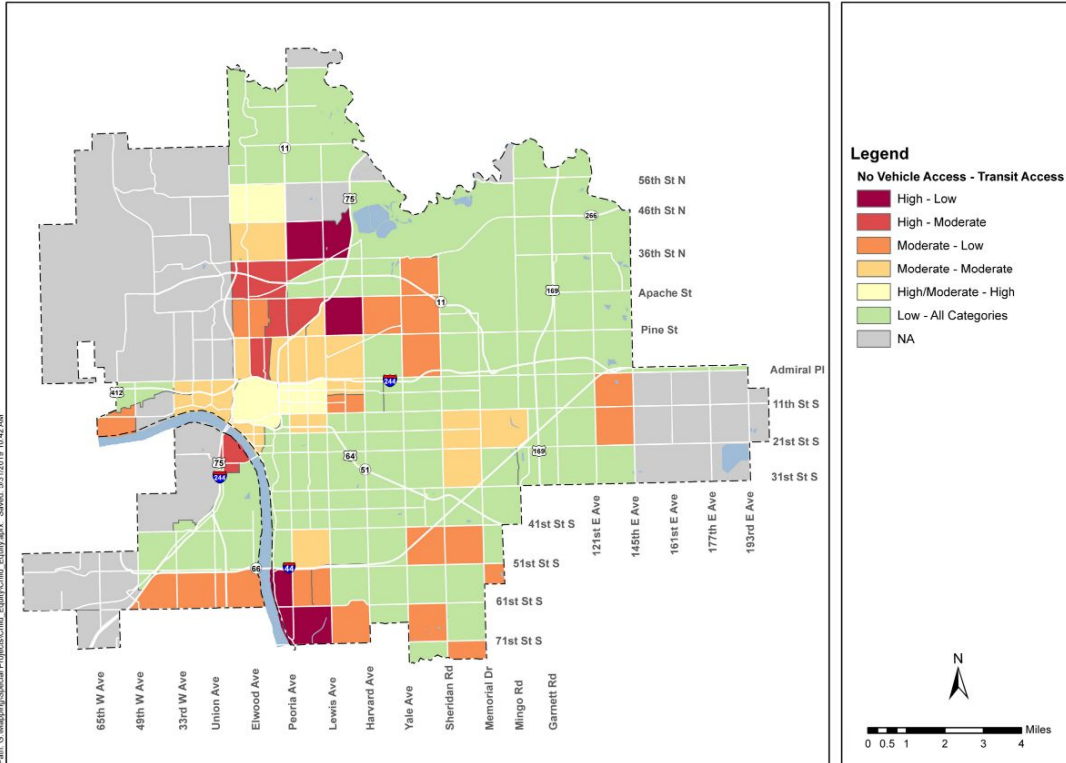
Landscape of Specific Indicators - Vehicle Access





Landscape of Specific Indicators - Vehicle/Transit Access

Zero Car Households and Transit Access





Mission, Vision, and Goals for the Future

These were established by the board and create the foundation for the 2022-2027 strategic plan

Initiatives and Implementation Timelines

The specific programs and projects that bring our strategies to life and the anticipated timeline for implementation

Our Commitments to the Community

Overarching educational commitments we make to Tulsa students and families

Strategies

The major bodies of work upon which we will focus for the next five years. These become our educational and resource priority and clearly define what we will pursue.

Tulsa Public Schools' 2022-2027 Strategic Plan Development



Mission, vision, and goals for the future

Board members held 35+ community listening sessions and used those to identify:

- Broad patterns in expectations and dreams for our school system;
- Our current strengths and highest priorities for improvement; and
- Community values that must be lifted up and protected in the plan.

On August 2, the Board adopted the [final version](#) of:

- **Mission & Vision:** our aspirations for the future
- **Goals:** the measurable accomplishments upon which we will focus
- **Guardrails:** community values that the plan and the actions of the district must protect
- **Interim measures:** a set of measures that tell the story of the our progress





Mission and vision

VISION

Our students lead through literacy, are empowered through experience, and contribute to their community.

MISSION

Tulsa Public Schools honors the diversity, creativity, and passion of our students elevating every student to be designers of their destiny.



Our goals and measures of progress

Goal 1: The percentage of K-5 students who are eligible for free/reduced lunch who are at/above the 50th percentile indicating grade-level proficiency in reading on MAP will increase from 23% in May 2021 to 40% by May 2027.

Goal 2: The percentage of 6-8 students who are eligible for free/reduced lunch who are at/above the 50th percentile indicating grade-level proficiency in reading on MAP will increase from 26% in May 2021 to 40% by May 2027.

Goal 3: The percentage of graduates earning post-secondary credits and qualifying credentials will increase from k% in May 2022 to l% by May 2027.



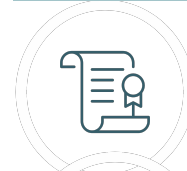
Increase percentage of students reaching reading growth targets



Increase reading fluency



Increase percentage of language learners gaining English proficiency



Increase percentage of students on-track to earn highest-level diploma



Increase percentage of high school students eligible for high-level courses



Increase percentage of students applying for financial aid



Authorized: \$414MM

Received: \$30MM

Remaining: \$384MM

**Next Bond Sale: \$38MM
Feb. 2022**

**2021 Bond
Progress:
Budget**

CURRENT AVAILABLE BALANCES OF BOND FUNDS

MANAGING DEPARTMENT	PROJECT DESCRIPTION	AVAILABLE (UNSPENT) BUDGETS	TOTALS
ALLOCATIONS			
ACADEMICS	INSTRUCTIONAL LEARNING RESOURC	1,500,000	
9,490,000.00	TEXTBOOKS & LEARNING MATERIALS	411,038	
	EXCEPTIONAL STUDENT/SPEC NEEDS	117,000	
	PROF LEARNING FOR TEACHERS	350,300	
	AUDITORIUM IMPROVEMENTS	497,380	
	LANGUAGE LEARNING RESOURCES	750,000	
	SCHOOL PROJECT FUNDS	1,848,611	
	POSTSECONDARY CAREER EDUCATION	178,440	
	EARLY CHILDHOOD EXPANSION	229,539	
	PROGRAM EXPANSIONS	425,000	
	SCOREBOARDS/SOUNDSYS REPLACMNT	315,759	
	WELLNESS AND PE	527,059	
	SUBTOTAL		7,150,127
TECHNOLOGY	SECURITY CENTRAL OFFICE NEEDS	458,000	
6,009,300.00	MASS COMMUNICATION AUDIO/VISUA	500,000	
	COMPUTERS/IWB & PERIPHERALS	253,000	
	ACCESS DOORS	165,660	
	CAMERAS/RADIOS/DISPATCH	419,176	
	ALARMS	1,978,760	
	BOND MANAGEMENT FEES	46,852	
	SUBTOTAL		3,821,448
FACILITIES	HVAC	0	
14,500,700.00	SECURE ENTRIES & FENCING	34,095	
	ACCESSIBILITY	0	
	PAVING	5,429	
	ROOFING	0	
	DINING/KITCHEN IMPROVEMENTS	32,656	
	FURNITURE	0	
	INTERIOR RENOVATIONS	110,433	
	PLANNED-UNBID/ARCHITECTS/CONTINGENCY	0	
	PROFESSIONAL SVC/BOND MNMT/ISSUANCE FEES	2,122	
	SUBTOTAL		184,735
TRANSPORTATION	SCHOOL BUSES / ROUTE MAIN	0.00	
0	SUBTOTAL		0
GRAND TOTAL			11,156,310



2021 Bond Budget Spreadsheets

2021 Bond Website

<https://www.tulsaschools.org/connect-with-us/partner-with-us/2021bond/~board/district-news/post/tulsans-approve-2021-bond>

Direct link to *2021 Bond Proposal Planning Budget Book*

<https://resources.finalsite.net/images/v1641925122/tulsaschoolsorg/vj4zhbt2qytycdp8uoz2/2021BONDBOOK.pdf>

Tulsa Public Schools

Bond Proposal

2021

Recommendation of the
Citizen's Bond Development Committee

Deborah A. Gist
Superintendent

Meeting adjourned due to lack of time.
Next meeting March 8, 2022 meeting.