

SY25-26 Long-Term Facilities Plan Recommendations



Boston School Committee

January 22, 2025

Agenda

1. Enrollment Projections and 2030 District Vision
2. Data Framework and SY25-26 Proposals
3. Student-Focused Transitions



Vision

Collectively, we want students to learn in schools that

- provide rigorous and culturally affirming learning experiences,
- provide access to wellness and enrichment,
- contain a supportive network of caring adults, and
- have the physical spaces to support all aspects of a student's education.

The four components of the BPS High-Quality Student Experience (HQSE).



Aligning our work to our vision

Well-Rounded BPS Ecosystem

Increase number of schools that support the High-Quality Student Experience for every student in the district.

Capital & Infrastructure Projects

- New Builds
- Renovations
- Mergers
- Closures
- Consolidations
- Grade Reconfigurations

Create and Improve Academic Programs

- Support and expand inclusive education & equitable literacy
- Expand bilingual & advanced academic programming
- Early college & career and pathways
- Create New Programming for Multilingual Learners and Students with Disabilities, Ages 19-22

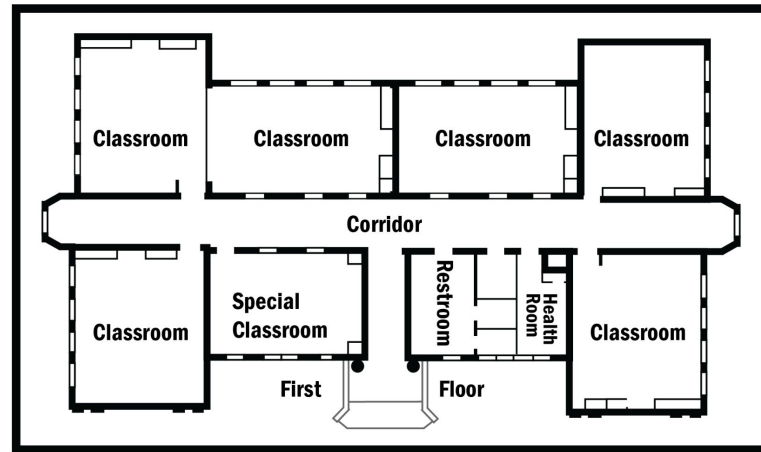
Structural Changes

- Strategic expansion of high quality schools
- Minimize transitions and provide clearer pathways
- Restructure alternative ed and pathways for students

Over 40% of BPS buildings cannot offer a High-Quality Student Experience

Many BPS schools are too small to allow for the flexible spaces and extracurriculars needed for today's students.

See this floor plan of a typical small BPS school:



**Art Classroom?
Science Labs?
Music Room?**

**Space to enroll
enough students
for robust theater,
sports, and clubs?**

**Health Services and
Social-Emotional
Support Spaces?**

**Teacher
Planning and
Work Space?**

**Gymnasium?
Auditorium?
Community Space?**

Small Group spaces?

Examples of what is required in a building to provide the High-Quality Student Experience

Making Progress at Current Buildings



*New schoolyard at
Warren-Prescott
Elementary*

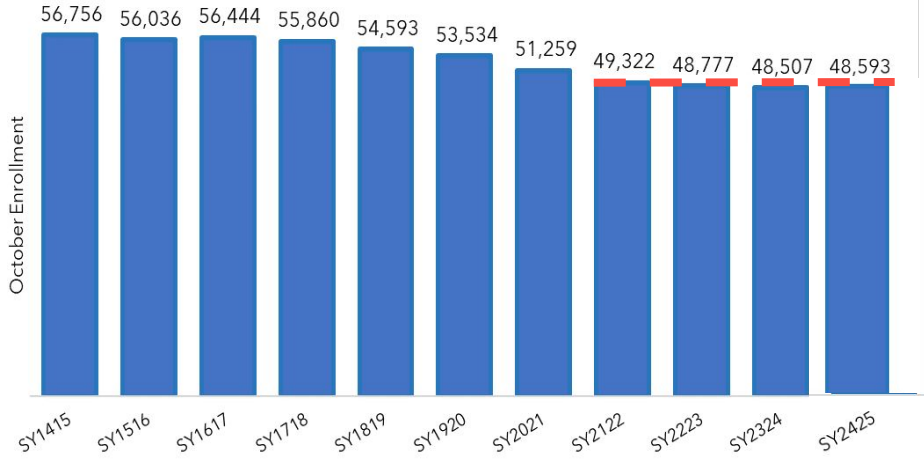
Since May 2024:

- Opened new Josiah Quincy Upper School
- Opened renovated building for the Horace Mann School
- Completed upgrades on 4 school playgrounds
- Celebrated the start of construction at the P.J. Kennedy Elementary School
- Continued to plan for the opening of the new Philbrick-Sumner and the new expanded Carter School in SY2025-26
- Launched decarbonization projects at Otis Elementary and JFK Elementary
- Advanced in the MA School Building Authority process for two new buildings/major renovation projects (Shaw-Taylor, Ruth Batson Academy)

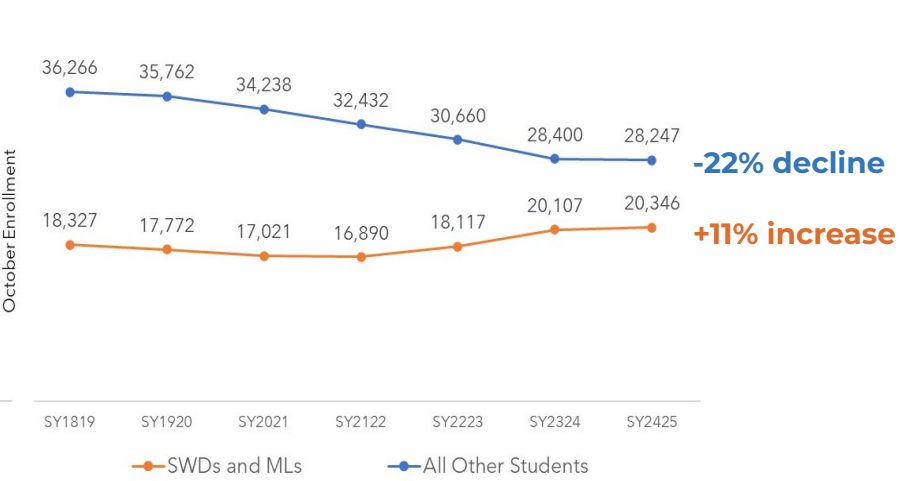
Enrollment Projections & 2030 District Vision

Enrollment has stabilized – but at a lower level than 10 years ago.

Though enrollment has stabilized, we do not expect to see enrollment rebound to pre-pandemic levels in the near-term.



In the same timeframe, the needs of our students have shifted and require different types of spaces.



*Includes all Students with Disabilities and MLs with an ELD level of 1,2 or 3. Includes all MLSWDs.



How do we know the appropriate range of buildings to serve our students?

Vision for schools

Vision for district

High Quality Student Experience

Every BPS school meets our community-based vision for serving the High Quality Student Experience.

Boston students can attend a high-quality school close to home if they choose.

Enrollment Projections & Building Capacity

Every BPS school is enrolled within the ideal range, ensuring individual schools are sustainable.

The District footprint matches enrollment projections and is flexible enough if those projections change.

2030 Enrollment Projections

Scenario & Assumptions	Elementary	Secondary	Total
1. Steady: Flat K enrollment and generous cohort change rate over 10 years	26,655 (+1%)	20,410 (-7%)	47,065 (-3%)
2. Modest decline: K enrollment based on projected births, 10 year avg. cohort change rate (minus pandemic years)	25,710 (-3%)	19,598 (-11%)	45,308 (-7%)
3. Steeper decline: K enrollment matched to declining births; 10 year avg. cohort change rate (minus pandemic years)	24,562 (-7%)	19,598 (-11%)	44,160 (-9%)

% change calculated based on SY2023-24

We are currently planning for Scenario 1 to preserve flexibility for an unpredictable future and ensure we have the physical space across Boston to educate a changing student body. We are committed to re-running long-term projections annually and making adjustments as needed.

Future District Footprint

Year	Total Schools	Elementary*	Secondary
2023-24	114	83	31
2024-25	112	81	31
2025-26	109	78	31
2026-27	104	76	28
2027-28	Approx. 100	TBD	
2028-29	Approx. 97	TBD	
2029-30	Approx. 95	69-71	23-25

**Elementary includes any middle schools and K-12 schools.*

Data Framework & Winter 2025 Proposals

Closure & Merger Criteria

Primary Metrics:

- Building Experience Score (2 or below on 4-point scale)
- Building cannot provide a full continuum of services
- Utilization rate (84-115% is considered to be a healthy range)

Additional Metrics:

- % of students administratively assigned to a school
- # of students for whom the school is first, second or third choice
- # of sections per grade in secondary schools
- Concentration of specialized programs for students with high needs
- % of the student body living near the school
- **For Frederick:** *% of students whose home language is Cabo Verdean Kriolu*

Additional considerations and data was considered to inform implementation planning (i.e. whether schools have similar High-Quality Instructional Materials).

Commitments



- Provide **robust supports to students and families** impacted:
 - **Priority** in the transfer/enrollment process
 - **Cap enrollment** to minimize the number of students impacted
 - Provide a **full academic year to transition and plan**
 - Offer informational sessions and “pop-up” services and **1:1 counseling to students and families** about the transfer process
 - **Provide 1:1 supports** for students who need extra support
- Provide **robust supports to retain talented staff** in including providing resume, interview, and licensure support
- **Reinvest funds** into students’ supports and opportunities
- Take a **data-driven, equity-based approach** to the work

Recommendations: Closures & One Merger

Effective June 30, 2026:

1. **Close Excel* High School**
2. **Close Mary Lyon Upper School***
3. **Close the Dever Elementary School****
 - a. Many Dever students live within the walk-zone of the Frederick and would be supported in evaluating the Frederick as an option
4. **Merge and relocate the Winthrop and Clap Elementary Schools** together to become the new Lilla G. Frederick school
5. **Close Community Academy as a diploma-granting school**; redesign and maintain as a code of conduct program and a transition program for students coming out of DYS, hospital stays, needing extended evaluations, etc.

Proposal: Close Excel High School



Proposal:

- Close Excel High School at the end of SY25-26 (end of next school year).

Next step for students:

- School will not enroll new students, including no 9th grade for SY25-26.
- Current eligible 11th and 12th graders will graduate as planned.
- Multiple secondary schools will be prepared to open their doors as welcoming schools to Excel students.
 - Students with IEPs will be counseled through the IEP process
 - Students in the SEI Vietnamese program receive support as they transition to another school of their choice.

Grade Configuration: 9-12

Neighborhood: South Boston

Building Experience Score: 1 out of 4

Building Provides Full Continuum of Services? No

5-Year Average Utilization Rate: 65%

SY24-25 Enrollment

Total Students	311
Asian	17.7%
Black	36.3%
Latinx	34.4%
Multi-Race / Other	4.2%
White	7.4%
Students with Disabilities	28.0%
Multilingual Learners	23.8%

Proposal: Close Dever Elementary School

Proposal:

- Close Dever Elementary School at the end of SY25-26 (end of next school year).

Next steps for students:

- School will not enroll new students, including no K1 or K2 for SY25-26.
- Current 5th and 6th graders will rise up and choose a secondary school as planned.
- Current K1-4th graders will receive support finding a new school, ideally closer to where students live, including the new Lilla G. Frederick (re-opening in fall 2026).
 - 38% of students live within walk zone of the Frederick (compared to 27% to the Dever).

Grade Configuration: K1-6

Neighborhood: Dorchester

Building Experience Score: 2 out of 4

Building Provides Full Continuum of Services? No

5-Year Average Utilization Rate: 77%

SY24-25 Enrollment

Total Students	444
Asian	3.4%
Black	21.2%
Latinx	65.8%
Multi-Race / Other	1.8%
White	7.9%
Students with Disabilities	15.5%
Multilingual Learners	56.1%

Proposal: Close Community Academy

Proposal:

- Close as a diploma-granting school at the end of SY25-26 (end of next school year).
- Re-imagine as a supportive placement for students who violate the BPS code of conduct and transition program for students needing additional Academic and SEL supports (ex. *transitioning from DYS, hospitalization, etc.*)

Next steps for students:

- School will not enroll new students.
- Current eligible 11th and 12th graders will graduate as planned.
- Current 9th and 10th graders will receive individual counseling to develop a transition plan and identify their next school.

Grade Configuration: 9-12

Neighborhood: Jamaica Plain

Building Experience Score: 0 out of 4

Building Provides Full Continuum of Services? No

5-Year Average Utilization Rate: 34%

SY24-25 Enrollment

Total Students	62
Asian	0.0%
Black	48.4%
Latinx	41.9%
Multi-Race / Other	8.1%
White	1.6%
Students with Disabilities	58.1%
Multilingual Learners	9.7%

Proposal: Close Mary Lyon Pilot High School

Proposal:

- Close Mary Lyon Upper School at the end of SY25-26 (end of next school year).

Next Steps for students:

- School will not enroll new students.
 - All current Lyon students will be allowed to rise up to their next grade level until closure/reconfiguration is implemented.
- Current 11th and 12th graders will graduate as planned.
- Multiple secondary schools will be prepared to open their doors as welcoming schools to Lyon students.
 - Students with IEPs will be counseled through the IEP process with support from the Office of Specialized Services.



Grade Configuration: 9-12
Neighborhood: Allston/Brighton
Building Experience Score: 0 out of 4
Building Provides Full Continuum of Services? No
5-Year Average Utilization Rate: 40%

SY24-25 Enrollment

Total Students	96
Asian	8.3%
Black	21.9%
Latinx	51.0%
Multi-Race / Other	8.3%
White	10.4%
Students with Disabilities	32.3%
Multilingual Learners	21.9%

Proposal: Merge the Winthrop and the Clap Elementary Schools into the Lilla G. Frederick Elementary School

Community Commitments:

- Maintain the name of Lilla G. Frederick, a long-time advocate in Grove Hall, for the school
- Continue to use the building for community purposes during any potential transition period
- Maintain access for future generations of students in Grove Hall and the surrounding community
- Maintain the future occupants of the building as a PreK-6 Community Hub School, with partnerships with neighborhood organizations

The District developed a vision for a new preK-6 school in the Frederick building, including a Cabo Verdean Kriolu dual language strand starting at K1, a substantially separate strand, and students transitioning from the Dever.

The following criteria were prioritized to assist in decision-making:

- **Commitments to the Lilla G. Frederick Board & Community** must be honored
- Scenarios must **advance the Long-Term Facilities Plan work** including expanding more students' access to better buildings, taking buildings offline, and/or thoughtfully repurposing buildings
- Scenarios should represent a **positive or no/minimal impact to students' change in walk zone**
- Significant **Cabo Verdean Kriolu-speaking population** at impacted schools

Proposal: Merge the Winthrop and the Clap Elementary Schools into the Lilla G. Frederick Elementary School

Clap Elementary

Grade Configuration: K1-6
Neighborhood: Dorchester
Building Experience Score: 1 out of 4
Building Provides Full Continuum of Services? No
5-Year Average Utilization Rate: 67%

Winthrop Elementary

Grade Configuration: K0-6
Neighborhood: Roxbury
Building Experience Score: 2 out of 4
Building Provides Full Continuum of Services? No
5-Year Average Utilization Rate: 113%

The Clap and the Winthrop combination met the following criteria:

- All students will move from a school building with a low Building Experience Score (1 or 2) to a high one (4, the highest possible score)
- All students will transition out of an under or over-utilized school building.
- There was minimal/no impact to students' change in walk zone at both schools. (Slightly more current Clap students live nearer to the Frederick than the Clap.)
- The Cabo Verdean Kriolu-speaking population at each school is 10% and 5%, which is relatively high for the district.

Grade Reconfigurations



Effective June 30, 2026:

1. Reconfigure **Mary Lyon** K-8 from a K-8 to a PreK-6
2. Reconfigure **BTU Pilot*** from a PreK-8 to a PreK-6
3. Reconfigure **Young Achievers*** PreK-8 to a PreK-6
4. Reconfigure **Dearborn STEM Academy*** from a 6-12 to a 7-12 (effective Fall 2025)

Why Grade Reconfigurations?

Provide **fewer transitions and more seamless pathways** for our families and students.

Provide more sections per grade middle schoolers – resulting in more **desirable programming, teacher collaboration time**, and the structure to support a **full continuum of services**.

Align our district to the 2019 Boston School Committee Policy aligning our district to a **K-6/7-12 and K-8/912 district**

*Transformation School



CITY of **BOSTON**

Future Use of Buildings

School	Building Experience Score (0-4)	Potential Future Use
Dever Elementary	2	Taken offline; consideration of future uses as part of renovation of Ruth Batson Academy
Excel High School	1	Currently scoping upgrades to enable future BPS high school use
Lyon High School	0	Considering moving future Lyon Lower into the upper building; current Lower building would be taken offline
Community Academy	0	Continues as a placement for students who violate the code of conduct and a transition program for students needing additional supports (ex. transitioning from DYS, hospitalization, etc.)
Clap Elementary	1	Taken offline as future uses are considered
Winthrop	2	Taken offline as future uses are considered

Student-Focused Transitions

Supports for Families and Students

We will provide 1:1 supports to determine academic, social emotional, and placement needs to support students and families to make the best choice for them.

Students with disabilities

- The Office of Specialized Services (OSS) will work with each student and their family, through the IEP process, to identify appropriate options for the next school based on student needs and goals.
- Special Education timelines will be maintained and teams will work collaboratively to support transitions for students.

Multilingual learners

- Individualized support from the Office of Multilingual and Multicultural Education (OMME) for students and families to identify schools that best fit students needs and goals.

School communities

- A Senior Project Manager from the Capital Planning Team will be assigned to oversee the day-to-day operations of the transition including community engagement, move logistics, and school support.
- A school-based Transition Support Coordinator will be hired to liaise with the senior Project Manager and ensure resources and support for a successful transition.

Supports for School Choice & Enrollment



Welcome Services

- Host Satellite offices (Pop-up Center) closer to where families live to make it more convenient to them to support impacted families
- Family Liaisons will inform families of Showcase of Schools and School Preview times.
- All transitioning families will receive Continuous Choice forms to support families with information on the transfer process
- Information about dates and times to meet with the Welcome Center will be shared with the school community in the fall.

School Assignment

- Students will receive priority in the assignment process for new school assignment for the 2026-2027 school year.
- Welcome Services will support families in the application process to access Special Admissions schools (i.e. Boston Green Academy or Edward M. Kennedy Academy for Health Careers)

Supporting Our Staff



We are committed to **retaining staff in the BPS Community** through robust supports through transitions.

- Resume and interview support
- Licensure and Massachusetts Tests for Educator Licensure (MTEL) prep support
- On-site Office Hours with Human Resources Staff

We have developed a [staff transition guide](#) that explains the coherent support for staff undergoing changes.

Welcoming input from the BPS community before the vote

1. Public survey:

<https://surveys.panoramaed.com/bps/communityfeedback2025>.

Responses will be synthesized and shared with School Committee members and the public ahead of the vote.

2. Multiple community meetings per school community
3. Public comment at School Committee meetings
4. Share feedback over email: capitalplanning@bostonpublicschools.org
5. Staff can provide feedback and questions directly in the forms sent to them by the central office.

Appendix

Highlighting Secondary Schools Close to Home

Welcoming Schools	Highlights at Welcoming Schools
Dearborn STEM Academy	<ul style="list-style-type: none"> • Computer Science, Advanced Manufacturing/Engineering, Health Science Innovation Pathway • STEMTech Academy, a new 9-14 model of early college
Holland Tech	<ul style="list-style-type: none"> • Biotechnology Innovation Pathway • Design & Visual Communications Integrated Career Training • STEM Flight Program
Ruth Batson Academy	<ul style="list-style-type: none"> • Early Education program at UMB + district's first at-scale University Assisted Community Hub School • 8 AP courses; 3 more than what students currently have access to
TechBoston Academy	<ul style="list-style-type: none"> • 10 AP courses; 5 more than what students currently have access to • Pilot program with UMB to go wall-to-wall Early College • Design & Visual Communications program
Boston Green Academy	<ul style="list-style-type: none"> • 7 AP courses; 3 more than what they currently have access to • Environmental Science & Technology Career & Technical Education (CTE) Program
Brighton High School	<ul style="list-style-type: none"> • 9 AP courses; 5 more than what they currently have access to • Health Sciences Innovation Pathway
Post-Secondary Transition Program	<ul style="list-style-type: none"> • New, innovative program to serve eligible 18-22 year old's to pursue skills to live an independent life

Learn about all of BPS' amazing secondary schools [HERE](#)

Supporting Students through Transitions

Excel	<p>Current 11th and 12th graders are eligible to graduate. We will not admit a 9th grade class in fall 2025. This leaves ~126 students to support through transitions.</p> <ul style="list-style-type: none">• Students are spread across the city, with clusters from South Dorchester (29), North Dorchester (19), and only (19) from South Boston.
Lyon Upper	<p>Current 11th and 12th graders are eligible to graduate. We will not admit a 9th grade class in fall 2025, but current Lyon 8th graders will have the option to attend for 9th grade. This leaves up to ~75 students to support through transitions.</p> <ul style="list-style-type: none">• Students primarily live in Allston/Brighton (28) and will have Brighton HS and Boston Green Academy as a nearby option.
Community Academy	<p>Current 11th and 12th graders are eligible to graduate. We will not admit a 9th grade class in fall 2025. This leaves ~25 students to support through transitions.</p> <ul style="list-style-type: none">• Students primarily live in Mattapan (6) and Roxbury (6).
Dever	<p>Current 5th and 6th graders are eligible to move to a new school as rising 7th graders. We will not admit K1 or K2 students in fall 2025. This leaves ~324 students to support through transitions.</p> <ul style="list-style-type: none">• Only 22% of K1-4 students who attend the Dever live in the walkzone. 33% live in South Dorchester, 29% live in North Dorchester, and 14% live in Mattapan.• Students who live near the Frederick will have the option to attend..

Reinvesting in our Students



- We are estimating that this set of proposals will lead to cost savings of about **\$10-\$20 million**.
- The **exact cost implications** will be determined as transition plans are finalized. For example, if a highly specialized program is impacted by a school closure, that program may be relocated to another school to ensure continuity of programming for students, which would mitigate any cost savings.
- We are committed to ensuring that all students are supported through this process and that **cost savings are intentionally and responsibly reinvested in our students' education**.

Closures: Staff Impacted

- **BTU Members: 165**
 - 127 teachers
 - 38 paraprofessionals
- **Guild, Cafeteria Staff, Custodial Staff, and BASAS Members: 25**

Race/ Ethnicity	BTU District Average	Impacted Teachers & Paras	District Average Other Unions	Impacted Other Unions
Black	29%	35%	36%	28%
Latinx/a/o	16%	14%	34%	40%
Asian	6%	4%	3%	8%
White	48%	45%	25%	24%

We are committed to **retaining our talented staff in the BPS Community** through robust supports through transitions.

Building Data Framework

What are the **primary metrics** we are using to understand the current state of buildings and schools?

Building is not meeting an acceptable building experience score

Building score is 2 or less

69 buildings meet this criteria

Building cannot provide a full continuum of services*

Failing Continuum of Services score

74 buildings meet this criteria

Building is underutilized or overutilized

5-year avg. utilization rate of below 84% or over 115%

61 buildings meet this criteria

**Continuum of services includes appropriate support spaces, classroom number and size, accessibility and location of classrooms and support spaces*

Primary Metrics for Impacted Schools

	Building Experience Score (2 or below)	Building cannot provide full continuum of services	Utilization rate (5-year avg is <84%)
Mary Lyon Upper	0	True	43%
Excel High School	1	True	65%
Dever Elementary	2	True	77%
Winthrop	2	True	113%
Clap	1	True	67%
Community Academy	0	True	33%

Find your school's data:

 www.boston.gov/departments/schools/decision-making-data-dashboard

BUILDING EXPERIENCE DASHBOARD

INTERACTIVE MAP: BPS SCHOOLS

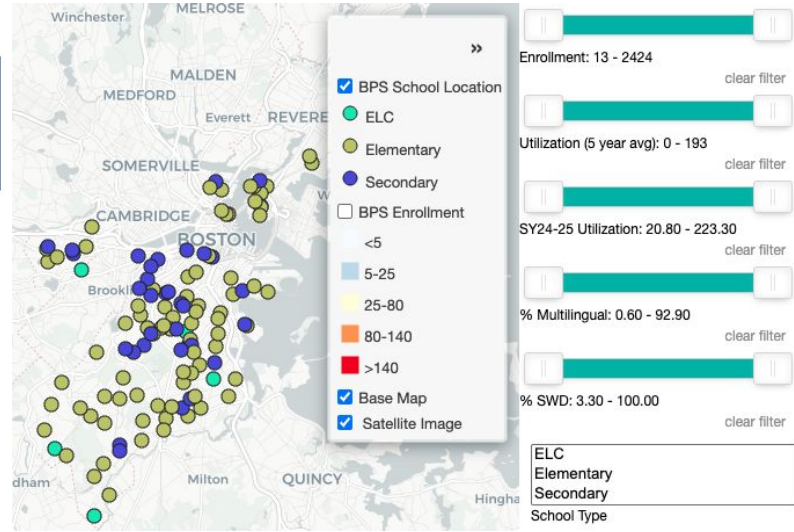
Overview Glossary Neighborhood-Level Data School-Level Data Model Space Summary **Enrollment, Capacity and Utilization**

School Enrollment, Building Capacity and Building Utilization

This page shows the enrollment of the school, calculated school building capacity and the building utilization rate. Enrollment has been broken out to show racial percentages as well as percentage of students with disabilities and percentage of students who are multilingual learners. Capacity has been calculated based off of square footage of classrooms from building blueprints and MSBA guidelines for recommended square feet per student. For more information please see the Capacity Report on the BPS Green New Deal website. Utilization is calculated by dividing enrollment by capacity

Please select a school building(s) to explore below:

School	Building Capacity	Enrollment	Utilization (SY2023-24)	Utilization (5 Year Average)
Adams Elementary School	236	237	106.78%	104.00%
Albert Holland School of Technology	688	406	58.87%	58.00%



Frederick: Decision-Making Considerations

Operational & Building Guiding Considerations

Criteria	Measure
Maintain the name of the school, Lilla G. Frederick, in a PreK-6 school	Whether school under consideration can change their name
Enroll approx. 650 students, with a significant portion of students from the Grove Hall community, in a PreK-6 elementary community hub school	Combined merged enrollment
Students impacted should transition from building(s) that do not provide access to the HQSE	Building Experience Score (2 or lower, out of 4)
Schools that are underutilized and/or cannot physically provide a continuum of services will be prioritized	5-Year Utilization Rate; Continuum of Services Score
The future school should bring the district closer to our goal of more students having access to high-quality education closer to home, if families chose	% of students living near the Frederick (<1 mile)

Frederick: Decision-Making Considerations

Academic & Programmatic Guiding Considerations

- Provide opportunities for inclusion and partial inclusion for students, developing the school as a model for inclusive education
- Expand access to native language; in particular, to Cabo Verdean Creole
- Be attentive to the percentage of students with disabilities and multilingual learners, striving to not over-concentrate those student populations in a single school
- Consider which High-Quality Instructional Materials schools are using and where they are in the implementation planning process

School Year 2024-25 Changes

Last year, the Boston School Committee approved (effective June 30, 2025):

- Closure of the Lilla G. Frederick Pilot Middle School
- Closure of the West Zone ELC and consolidation with Hennigan

The following **grade reconfigurations** were also presented and are underway: Hennigan to a PreK-6, Hernández to a PreK-6, and Gardner to a PreK-6

Over the last year, to **create more high-quality seats** that support the full diversity of BPS learners, we have:

- Created 180 alternative education seats at both the middle school and high school level, including at the new BATA satellite campus in East Boston, designed for multilingual learners
- Prepared to launch the Post-Secondary Transition Program for students with disabilities aged 18-22 in Fall 2025
- Cut the ribbon on the new Josiah Quincy Upper School and renovated home for Horace Mann School for the Deaf and Hard of Hearing
- Secured approval of 9 new English Learner education programs, which will launch in Fall 2025
- Expanded early college to 790 students (from 617 in SY23-24 and 179 in SY21-22).
- Expanded AP course offerings across 9 schools
- Opened 6 new Community Hub Schools
- Begun implementation of inclusive education at K0, K1, K2, 7 and 9
- Progressing plans to increase seats in new builds/major renovations in Shaw-Taylor, Irving (Sumner and Philbrick) and Ruth Batson Academy
- EMK will see its first expanded 9th grade class in September 2025 as part of the partnership with MGB and Bloomberg Philanthropies

Lessons learned from SY24-25

- **Communicate any school changes** publicly and in coordination with BPS Welcome Services early in choice season to reflect district changes so families understand their options
- Provide **support to schools welcoming schools**
- For merging schools, **consider combining schools with mixed performance/demand** from families
- **Check historical cases** to ensure we know which students, if any, have experienced closures in the past and create communications and support plan
- Consider **school leadership** of across proposals (ex. tenure, experience, demographics)

ENGAGEMENT & WORK: SPRING 2022- FALL 2025

Spring 2022	<ul style="list-style-type: none"> • Green New Deal for Boston Public Schools is Launched
Winter 2023	<ul style="list-style-type: none"> • 75 extended, small-group conversations • 21 public listening sessions and community focus groups (Over 500 participants)
Spring 2023	<ul style="list-style-type: none"> • Community Survey informing the HQSE (9,000 responses)
Fall 2023	<ul style="list-style-type: none"> • Webinar on the Decision-Making Rubric • Virtual Sessions on Decision-Making Rubric
Winter & Spring 2024	<ul style="list-style-type: none"> • Long-Term Facilities Plan Overview Webinar • Long-Term Facilities Plan Workshops <ul style="list-style-type: none"> ○ E. Boston, Charlestown, Fenway-Kenmore, Downtown, S. Boston, Allston-Brighton ○ N. Dorchester, Roxbury, Jamaica Plain, Mission Hill ○ S. Dorchester, Mattapan, Hyde Park, Roslindale, W. Roxbury ○ Secondary Schools Specific • Data Framework and HQSE vision announced publicly
Summer - Fall 2025	<ul style="list-style-type: none"> • Cross-departmental working group formed with subcommittees and data begins to be applied and evaluated across BPS.

COMMUNICATION & ENGAGEMENT: WINTER 2025 - SPRING 2025

Winter 2025	<ul style="list-style-type: none">• Meetings with impacted school leaders to gather input and develop implementation plans.• Refine recommendations and Racial Equity Planning Tool based on input• January 6 & 7 - Proposals announced publicly
Winter 2025	<ul style="list-style-type: none">• Excel High School Virtual Community Meeting• Dever Elementary School Virtual Community Meeting• Community Academy High School Virtual Community Meeting• Clap Elementary School Virtual Community Meeting• Winthrop Elementary School Virtual Community Meeting• Mary Lyon Upper and Lower Virtual Community Meeting• BTU Pilot Virtual Community Meeting• Young Achievers Virtual Community Meeting• Dearborn STEM Virtual Community Meeting• January - February 7 Families can fill out our community feedback survey on how the district can support transitions: https://surveys.panoramaed.com/bps/communityfeedback2025• Excel High School In-Person Community Meeting• Dever Elementary In-Person Community Meeting• Mary Lyon In-Person Community Meeting• Community Academy In-Person Community Meeting
Spring 2025	<ul style="list-style-type: none">• Clap Elementary In-Person Community Meeting• Winthrop Elementary In-Person Community Meeting• Joint Clap & Winthrop Community Meeting & Tour of the Frederick Building• School Committee Vote

Grade Configuration Criteria



Primary Considerations:

- Whether a school is aligned or misaligned to the 2019 grade configuration policy*
- Under-enrolled 7th & 8th grades, particularly those that serve one section per grade
- 7th & 8th grade seat availability in the area to support a seamless pathway for students, including for students in specialized programs, without creating a tipping point at welcoming schools
- Whether school is a candidate for pre-K expansion based on feasibility & needs

*In 2019, the Boston School Committee adopted a grade configuration strategy by which BPS is primarily a K-6/7-12 and K8/9-12 system to offer students an education experience with fewer transitions to minimize transitions for families.

Grade Reconfigurations

School	Current	Future	Criteria			
			Misaligned to 2019 policy	Single- Strand 7th + 8th Grade	7th + 8th Seat Availability in Area	Candidate for Pre-K Expansion (Feasibility + Need)
Dearborn STEM Academy	6-12	7-12	X	N/A	N/A	N/A
Mary Lyon K-8 School	K-8	PreK-6		X	X	Under evaluation
BTU Pilot K-8	PreK-8	PreK-6		X	X	Under evaluation
Young Achievers	PreK-8	PreK-6			X	Under evaluation