

# SM SOUTH

### Table of Contents

Health Office	p. 3
Student of the Week	p. 4
Raiders R.I.S.E.	p. 5
KSMS Raider Report	p. 6
Counselor's Corner	p. 7
Occupation Spotlight	p. 11
Every Day Counts	p. 12
J's for Days	p. 13
PTSA	p. 14
Tips for parents	p. 16
Yearbook Ad Sales	p. 17
Lending Library	p. 18
Rocky's Rundown	p. 19
Fundraisers	p. 20
Weekly Event Schedule	p. 22



### Values

We care about ALL students.

### Beliefs

We believe ALL students can and will learn.

### Vision

All means ALL! Personalized Learning for ALL students.



UNDER ARMOUR

## Hard-Hat Hero

Staff member of the week

*Jill Oliver*



## Tweet of the Week!

 **pam wilson** @pswinozusa · 19h  
 @SMSouthPLS @SMSouthTDain  
 @SMSRaidersAD @smsbowling @DrBenRich  
 Our Seniors who were honored unifiedbowling



**Follow Dr. Dain on**  
**X: @SMSouthTDain**  
**Instagram: SMSouthTDain**

**Jill Oliver** teaches art at South and was nominated by her colleagues: “Jill always goes the extra yard to share her artistic skills for anything going on in the school. She is routinely asked to make a flyer for an upcoming event, to paint backdrops or hard print any number of things. She does all this while she shares her love of art and expertise with all her classes. Her positive attitude is a perfect example of how amazing our South staff continues to be!”

**Email Dr. Dain to nominate a South staff member for the Hard Hat Hero Award**

# SHAWNEE MISSION SOUTH CALENDAR

NOVEMBER 11 Traditional Schedule	NOVEMBER 12 Even Block	NOVEMBER 13 Odd Block	NOVEMBER 14 LATE START Even Block	NOVEMBER 15 Odd Block
NOVEMBER 18 Traditional Schedule 7:00pm PTSA Meeting	NOVEMBER 19 Even Block	NOVEMBER 20 Odd Block	NOVEMBER 21 LATE START Even Block	NOVEMBER 22 Odd Block
NOVEMBER 25 NO SCHOOL Thanksgiving Break	NOVEMBER 26 NO SCHOOL Thanksgiving Break	NOVEMBER 27 NO SCHOOL Thanksgiving Break	NOVEMBER 28 NO SCHOOL Thanksgiving Break	NOVEMBER 29 NO SCHOOL Thanksgiving Break
DECEMBER 2 Traditional Schedule	DECEMBER 3 Even Block	DECEMBER 4 Odd Block	DECEMBER 5 LATE START Even Block	DECEMBER 6 Odd Block
DECEMBER 9 Traditional Schedule	DECEMBER 10 Even Block	DECEMBER 11 Odd Block	DECEMBER 12 LATE START Even Block	DECEMBER 13 Odd Block
DECEMBER 16 Odd Block	DECEMBER 17 Even Block	DECEMBER 18 Odd Block Final Exams - 1 & 3	DECEMBER 19 LATE START Even Block Final Exams - 2, 4 & 6	DECEMBER 20 Odd Block Final Exams 5 & 7 1:10 dismissal
DECEMBER 23 NO SCHOOL Winter Break	DECEMBER 24 NO SCHOOL Winter Break	DECEMBER 25 NO SCHOOL Winter Break	DECEMBER 26 NO SCHOOL Winter Break	DECEMBER 27 NO SCHOOL Winter Break
DECEMBER 30 NO SCHOOL Winter Break	DECEMBER 31 NO SCHOOL Winter Break	JANUARY 1 NO SCHOOL Winter Break	JANUARY 2 NO SCHOOL Winter Break	JANUARY 3 NO SCHOOL Teacher Work Day
JANUARY 6 Traditional Schedule 7:00pm PTSA Meeting	JANUARY 7 Even Block	JANUARY 8 Odd Block	JANUARY 9 LATE START Even Block	JANUARY 10 Odd Block
JANUARY 13 Traditional Schedule	JANUARY 14 Even Block	JANUARY 15 Odd Block	JANUARY 16 LATE START Even Block	JANUARY 17 Odd Block
JANUARY 20 NO SCHOOL MLK Day	JANUARY 21 NO SCHOOL Professional Learning	JANUARY 22 Traditional Schedule	JANUARY 23 LATE START Even Block	JANUARY 24 Odd Block

# Health Office Update

## November 2024



**Parents~If your student has texted you to go home, please call attendance 993-7546. Do not send your student to the health office to be called out. We will contact you if your student is sick and needs to go home.**



**SMSD policy~~ students are not allowed to keep any medication with them, all medications are to be given through the health office. We have Tylenol, Ibuprofen, Zyrtec and more. Make sure you have filled out the OTC (over the counter form). This will not include emergency medications that the student is allowed to keep with them; epi pens and inhalers.**

**What Illnesses are going around??  
Strep Throat~Colds~Upper Respiratory  
Infections~Coughs~GI  
Issues~Bronchitis~Pneumonia & More. All the more reason to  
take care of yourself, eat right~get good night sleep~stay  
hydrated~get your Vaccinations & Stay home when you are sick!!**



**Take time to be Thankful for those around you. Enjoy your break & Stay Healthy Raiders!**

**Angie York - SM South Nurse**  
**913.993.7516**  
**[soyork@smsd.org](mailto:soyork@smsd.org)**



# Raiders! - Nominate your Peers

[Click HERE to Nominate for Student of the Week](#)

Taylor Reasons recognized

**Chet Salsbury**

with the KINDNESS CHAIN as our  
Student of the Week!



# SMS Raiders RISE

Respectful to Others  
Initiates Change  
School Pride  
Empowered Learner

#RaidersRise

## PURPOSE

Monthly reward raffle for qualifying students who help Raiders RISE above expectations and develop an accepting and safe culture. RISE recipients are announced the first Monday of the month.

## HOW TO QUALIFY

- 1 or less unexcused absences
- 1 or less tardies
- 90% attendance rate
- 0 discipline referrals
- No Fs

**Congratulations to our October Raiders R.I.S.E. winners:**  
**Freshmen: Breeleigh Essary**  
**Sophomore: Carter Buci**  
**Junior: Marquan Washington**  
**Senior: Manahil Fatima**



# RAIDER REPORT

PRESENTED BY K S M S

*click here to watch:*

Raider Report 9: <https://www.youtube.com/watch?v=N6KT2og3uqA>





Follow @counselingSMS on twitter  
Facebook 'Shawnee Mission South Counseling'

Please see below to find your counselor's name.

<u>Your Last Name</u>	<u>Your Counselor's Name</u>
A-C & ELL	Nichole Dosland
D-I	Chris Shelby
J-O	Jasmine Morgan
P-T	Jennifer Herrmann
U-Z	Traci Johnson

- Free Application for Federal Student Aide (FAFSA) Parent & Student Informational Night is Nov 20<sup>th</sup> @ 6:30pm in the library.
- Juniors- Registration opened for the Free ACT exam on Feb 25<sup>th</sup>. The junior student must register [HERE](#) by Nov. 29<sup>th</sup>.
- The deadline to request a 2<sup>nd</sup> semester valid schedule adjustment is Dec.6<sup>th</sup>. Check your Canvas Page and/or email for the link.
- Practice ACT results for juniors will be distributed on 11/13. If you have a junior, ask them to see their results.
- Wednesday, November 13<sup>th</sup> South students will be able to explore the Navy simulation at SMN. Students must register via the link that will be emailed to them soon.
- Tutoring is available to assist students before and after school and during seminar, lunch, and late start. Please reach out to your child's teacher or counselor if they could benefit from some extra help. There is still time in the semester to improve grades.
- 

**It's crazy to believe but the Holiday season is quickly approaching. If your family needs assistance, see below. If you know of a family who could use some extra help, please reach out to us.**

**🎄 Holiday Assistance** – Johnson County Christmas Bureau offers a Holiday Shop during the month of December. All pre-qualified shopping guests receive an appointment - shoppers are below 150% of the poverty level and reside in Johnson County, Kansas. The Holiday Shop is like a pop-up department store providing a unique shopping experience (groceries, personal care items, toys & gifts, books, clothing, coats, hats, gloves & scarves, etc.) all free of charge. **Click the link to *apply* or learn how you can help:** <https://jccb.org/apply-to-shop>

**If you or someone you know is feeling unsafe or having thoughts of harming themselves or others, please utilize these resources:**

- Call 988/911/Go to an Emergency Room
- Call the National Suicide Prevention Hotline at 1-800-273-8255
- Text HOME to 741741 to connect with a Crisis Counselor
- Recursos en Español- [El Centro](#) [JoCo Salud Mental- se habla Español.](#)



# STAHR

Students Training in Academia, Health, & Research

## SATURDAY ACADEMY 2024-2025 APPLICATION IS NOW OPEN!



### About

High school students in the greater Kansas City Area interested in healthcare can apply to:

- Explore healthcare careers
- Prepare for college
- Receive tips and strategies for academics
- Gain personal and professional development

Participants will meet 9am-12pm on Saturdays at UMKC's Health Sciences Campus.

### Dates

Saturday Academy will occur on the following dates:

- October 12, 2024
- October 26, 2024
- November 9, 2024
- November 23, 2024
- December 7, 2024
- January 11, 2025
- January 25, 2025
- February 8, 2025
- February 22, 2025
- March 8, 2025

### APPLICATION REQUIREMENTS

- ✓ Complete online application
- ✓ Submit copy of your grade history/transcript
- ✓ Recommendation form from a teacher/counselor/professional
- ✓ Submit a Parent Consent Form

Learn More &  
Apply Here by  
Friday, September  
27th @ 11:59pm



<https://med.umkc.edu/saturday-academy/>

Contact Us: ☎ 816-235-6169

✉ stahr@umkc.edu

🌐 info.umkc.edu/stahr/



## ACT Prep Course

**Shawnee Mission South High School (01/03/25)**

Sale Price: \$75.00! Original Price: ~~\$90.00~~  
 (Sale price expires 12/20/24)

**WHEN: Friday, Jan. 3, 2025**

8:30am - 2:10pm CT

(40-minute lunch break is included. Lunch is BYOL)

**WHERE: Shawnee Mission South - Library**

5800 West 107th St, Overland Park, KS 66207



**[Click HERE to Register](#)**

**Why take this class?** This class includes practical and relevant information on how to increase your ACT score. It shows you how to control the test and not let it control you! The workshop covers what will be on the test and how to master test-taking techniques. This class is not a practice test! Learn general ideas about the ACT as a whole and the individual tests:

- English- Learn what ACT test-writers are looking for and how to approach different types of questions.
- Math- Learn what problem-solving skills and math skills you need.
- Reading - Learn your best method for doing well on ACT reading.
- Science- Learn common question types and what's really required to do well.
- **Requests for refunds will have a \$20 processing fee deducted if cancelled more than 1 week prior to the class date. Cancellations within a week of the class date will not receive a refund. Make-up classes are not offered for partial attendance. No-show students are nontransferable and nonrefundable.**
- This class fills quickly; registrations are prioritized by date received. **Class size varies based on host location, but complies with local CV19 guidelines.** Upon receipt of payment all registrants will receive a confirmation email.
- Payment for this course does not register you for the official ACT. Students must register and pay for the ACT at [actstudent.org](http://actstudent.org).
- Additional ACT information is available in your high school counseling office.

**About the program: Carolyn Devane has been teaching ACT classes and helping thousands of students improve their scores since 1999. Here's what students are saying:**

*"I took your class at the K-State campus at the end of August! I was the kid that said you raised my score by three points! Well, guess what? You have outdone yourself once again!*

*"I received, with a super score, a 26 on the ACT!! That's a two point increase from my previous score! My score in my math section increased five points!!!! I used all your tips... and this math score really made me proud of myself.*

*"I've been getting even higher scores when I practice, so I am thinking about retaking the ACT in January or February! I just wanted to let you know that both of your classes have helped me to become a better test taker and a more accomplished student, and I want to thank you!!"*

**— Tobias, Shawnee Mission West High School (October 2020)**

Occupation Spotlight: High Demand – High Wage Careers



<b>\$27.13</b> Entry Level Wage	<b>0.8%</b> Average Annual Growth	<b>NO</b> on-the-job training
<b>\$37.59</b> Experienced Level Wage	<b>874</b> Annual Openings	<b>5 YEARS OR MORE</b> Work Experience

**Farmers, Ranchers, & Other Agricultural Managers**

Also called: Aquaculture Director, Farm Manager, Greenhouse Manager, Ranch Manager

Plan, direct, or coordinate the management or operation of farms, ranches, greenhouses, aquacultural operations, nurseries, timber tracts, or other agricultural establishments. May hire, train, and supervise farm workers or contract for services to carry out the day-to-day activities of the managed operation. May engage in or supervise planting, cultivating, harvesting, and financial and marketing activities.

**Knowledge**

**Manufactured or Agricultural Goods**

- manufacture and distribution of products
- food production

**Business**

- management
- human resources (HR)

**Math & Science**

- arithmetic, algebra, geometry, calculus, or statistics
- biology

**Arts & Humanities**

- English language

**Skills**

**Basic Skills**

- thinking about the pros and cons of different ways to solve a problem
- talking to others

**Problem Solving**

- noticing a problem and figuring out the best way to solve it

**People & Technology Systems**

- thinking about the pros/cons of different options and picking the best one
- measuring how well a system is working and how to improve it

**Abilities**

**Verbal**

- listen and understand what people say
- communicate by speaking

**Ideas & Logic**

- notice when problems happen
- use rules to solve problems

**Technology**

You might use software like this:

**Database User Interface & Query**

- Ag Leader Technology SMS Advanced
- Microsoft Access

**Presentation**

- Microsoft PowerPoint

**Enterprise Resource Planning ERP**

- Midwest Microsystems Cow Sense
- SAP software

# EVERY. DAY. COUNTS!!!



*Your Attendance Matters!*

## **District Attendance Specialist**

Hello! My name is Memo Rodriguez and I am the Shawnee Mission School District Attendance Specialist for the South high school feeder area. I am here mainly to provide follow-up monitoring of students identified as needing support for chronic absenteeism, but other functions I perform are:

- I serve as a liaison between students, families, and school teams to facilitate positive student attendance.
- I cooperate with representatives from social services and law enforcement agencies in cases of mutual interests.
- I manage all associated paperwork, arrange for educational facilitators, connect families with needed community resources.
- I communicate and work effectively and cooperatively with members of the school district and community to promote student attendance.
- I work effectively with chronically absent as well as truant students and their families.
- I connect families struggling with attendance with appropriate school and community resources.

My hours at South high school are Monday through Friday 7 A.M. to 12 P.M.

Indian Woods middle school hours are Monday through Friday 12:30 P.M. to 3:30 P.M.

If you have any questions regarding phone calls or emails received by me, please feel free to reach out.

Thank you,

## **Memo Rodriguez**

District Attendance Specialist

**Shawnee Mission South High School**

**Indian Woods Middle School**

**SMSHS:** 913-993-7781

**IWMS:** 913-993-0699

[Memorodriguez@smsd.org](mailto:Memorodriguez@smsd.org)

# Attendance Incentive

SHAWNEE MISSION SOUTH

# J'S FOR DAYS

PERFECT ATTENDANCE



2 STUDENTS EACH SEMESTER PICK OUT THEIR OWN JORDANS

**PTSA Meets Mondays at 7:00pm in the Library**

**November 18**

**January 6**

**Febraury 3**

**March 3**

**April 7**

English link <https://form.jotform.com/242038408631149>

Spanish link <https://form.jotform.com/242039139588162>



**SOUTH  
PTSA**

**JOIN  
NOW**

SOUTH PTSA BENEFITS -  
TEACHER APPRECIATION -  
KIDFEST - SCHOLARSHIPS -  
RAIDER RALLY - SENIOR  
BREAKFAST & SO MUCH  
MORE!

*Raiders*



# SHAWNEE MISSION SOUTH

## Yard Sign Order Form

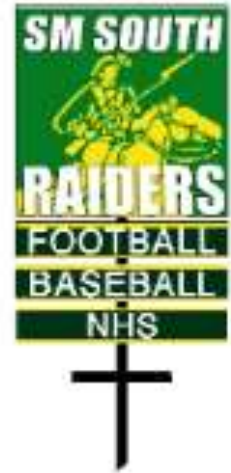
**Yard Signs**  
18" x 18" sign on white PVC

**\$60 for Yard Sign**

**Riders**  
3" x 18" white PVC

**\$12.00 for Each Rider**

Riders are available for any school activity. Yard signs also come with steel T-bar stake and "S" hooks.



### Rider Examples:

Football	Marching Band	NHS	Senior	Pep Club	Basketball
Soccer	Symph. Band	Spanish Honor Society	Class of 2025	Wrestling	Chinese Club
Jazz Band	Orchestra	KSMS	Class of 2026	French Club	Golf
Concert Band	Cross Country	Forensics	Swim/Dive	Bowling	Latin Club
Pep Band	Debate	Academic Decathlon	STUCO	Softball	Russian Club
Tennis	Drumline	DECA	Yearbook	International Club	Baseball
Gymnastics	Choir	Mathletics	The Patriot	Track & Field	Green Club
Heritage Singers	Volleyball	GSA	Categories	Inscriptions	Pacesetters
Chanticleers	Robotics	FCA	Coalition	Class Officer	Democrats in Action
Cheerleading	Chorale Choir	Raider Researcher	Science Olympiad	R.A.D.D.	Show-Me-South
Drum Major	Theatre	Business Professionals	Club 121	NAHS (National Art	Med Sci Health
Link Crew	Ethics Club	of America	Animal Rights Club	Honor Society)	Swim

Customer's Name: \_\_\_\_\_ Student's Name: \_\_\_\_\_

Phone #: \_\_\_\_\_ Email: \_\_\_\_\_

# of Yard Signs: \_\_\_\_\_ Riders: \_\_\_\_\_ Total \$ \_\_\_\_\_

Venmo @jennifer-burns-96 (and put exact info from form). For questions: Contact Jennifer Burns  
 If paying by venmo no need to send paper form 913-526-4977  
 OR make checks payable to: SMS Project Graduation and mail to: jboresow@gmail.com  
 Jennifer Burns c/o SMS Signs  
 3517 West 97<sup>th</sup> Place, Leawood, KS 66206

**Deadline for winter I order is Sunday, December 1**  
**Signs will be available for pick-up on a specified date – watch your email!**

*Sales to benefit SMS Project Graduation*

# Driven to Learn: Engage in the Learning for Success

## What is "Engagement"?

Student engagement describes how interested, curious, and involved a student is in their learning.

The more actively engaged a student is in the learning = more they learn.

## Why is engagement important?

"Engaged students are **2.5 times more likely to say they do well in school** and are **4.5 times more hopeful about their futures than their disengaged peers**"  
(Gallup Study, 2018)

## Questions for Families to Ask Students

- What classes do you feel like you are the most interested in?
- What motivates you to do well in a class?
- What classes do you struggle to be involved in? Why?

## Questions for Students to Ask Themselves

- What class or activities do you find yourself "driving" your own learning?
- What motivates you?
- What are you interested in? How can you connect your interests to your classes?

These are the different levels of student engagement!

ACTIVE ←		PASSIVE		→ ACTIVE	
Disrupting	Avoiding	Withdrawing	Participating	Investing	Driving
Distracting others Disrupting learning	Looking for ways to avoid work Off-task behavior	Being distracted Physically separating from group	Doing work Paying attention Responding to questions	Asking questions Valuing the learning	Setting goals Seeking feedback Self-assessment
DISENGAGEMENT			ENGAGEMENT		

## 2025 SENIOR TRIBUTES SHAWNEE MISSION SOUTH HERITAGE

### CONTACTS

#### Tucker Love

Yearbook Adviser  
(913) 993-7605  
tuckerlove152@smsd.org

#### Senior Tributes Editor

Meggie Gerritz  
smsyearbookads@gmail.com

Elizabeth Owusu Addo

smsyearbookads@gmail.com

#### School Address

Shawnee Mission South  
5800 W. 107th Street  
Overland Park, KS  
66207

### TRIBUTE DEADLINES

October 18 and December 6 are the two senior tribute deadlines. Payment is due by the deadline date to be accepted for pricing. Pictures and message for all tributes are due at the time of purchase, and no later than December 6.

Tribute prices go up following the early bird deadline, so turning in tribute information early is highly suggested.

### TRIBUTE PRICES

Tribute prices listed on the second page reflect a 3.5% service charge for online purchases.

### DEAR PARENTS,

Do you want to give your child recognition in an award-winning yearbook? If so, purchasing a senior tribute is a great way to show them how much you care about them. This is a wonderful way to share your own words, pictures and memories with your senior. A senior tribute is also a great parting gift for your senior, and a great way to support Shawnee Mission South's yearbook, Heritage. Students enjoy seeing these messages, words of encouragement, and funny and sentimental photos from their parents, grandparents and other loved ones.

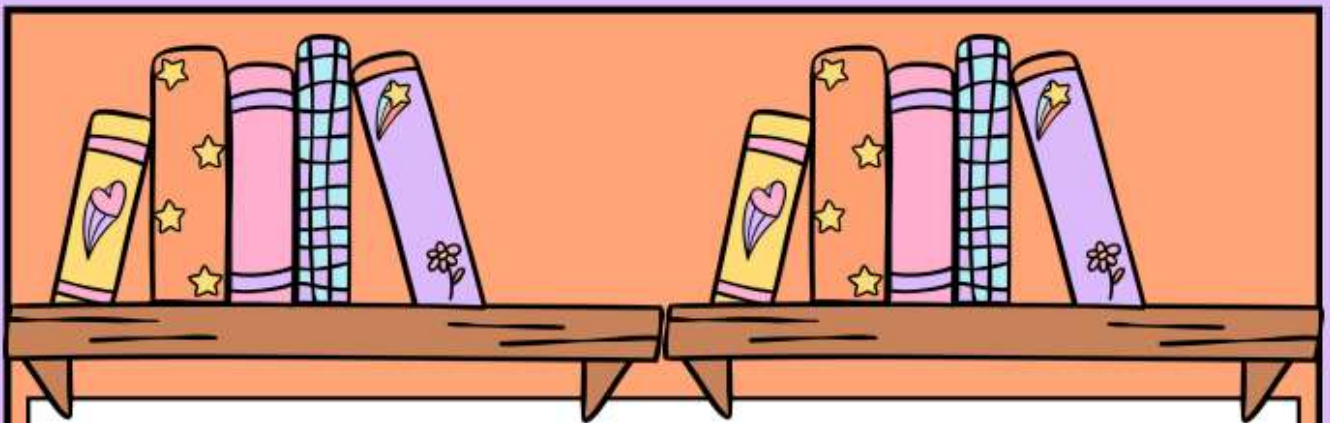
### GUIDELINES

- Tributes are not considered as meeting deadline until payment is received.
- **All tribute content (words, photos) must be submitted at time of purchase.**
- Please choose photos of GOOD & HIGH quality. Please stay within the max photo limit for the tribute size chosen.
- Photos should be uploaded to the Walsworth ad portal, accessible after purchasing your tribute.
- Physical photos may be scanned in at South; please contact us to confirm scanning.
- Heritage is not responsible for any lost or damaged photos.
- We cannot accept photos of children without clothing.
- We cannot accept photos that have any sort of weapon related paraphernalia.
- Because of copyright, you must secure permission for one time use in Heritage, for any photos taken by a professional.
- We cannot accept any song lyrics or poetry that you have not secured the copyright for.
- Heritage already has permission to use photos taken by Inter-State studios.
- If you do not want part of a photo to appear in your child's ad, or have other special instructions, please share a note detailing the requests via email to smsyearbookads@gmail.com.
- Heritage reserves the right to edit for content.
- A digital proof of your ad will be sent to the email address provided on the ad contract. Please contact T. Love or the Tributes Manager if a proof has not been sent by January 31, 2025.
- You will be given one week from the date your proof is sent to provide feedback and request changes. After that period, all tributes will be considered final.
- If you have any questions, please contact the senior tribute editors at smsyearbookads@gmail.com or T. Love at tuckerlove152@smsd.org

### HOW TO PURCHASE

To purchase your senior tribute, please follow these instructions:

- Go to [www.yearbookforever.com](http://www.yearbookforever.com)
- Search for Shawnee Mission South High School in the search bar.
- Select our school to navigate to the Walsworth SMS yearbook store.
- Click "Get Started" in the Create a Senior ad box.
- Provide the requested student information and buyer information to begin the purchase. Click "next" when ready.
- Click "Have the school design my ad".
- Select the tribute size you wish to purchase and click "next".
- Select color as your ad option and then click "continue".
- At this point you will be prompted to add senior tribute copy. In the "headline" box, please type your students name. In the "body" box, please provide the message you wish to have in your senior tribute.
- Click "next".
- You will be prompted to upload your photos. If you don't want photos in your tribute OR plan to bring in physical photos for scanning, please click on that option in the upper right hand corner of the screen.
- Click "next" to get to your shopping cart. You may continue shopping at this point or you can checkout.
- There is a 3.5% service fee on every senior tribute purchase
- Complete the purchase by checking out using your credit card information.



# OUR LENDING LIBRARY

- SMS STUCO has created a shared resource library for all SMS clubs and teams to use when hosting banquets/ events. Think linens, decor, and more!
- This is putting your student activity fees to work for the SMS community



QR code for the Resource Library Form

Want to learn more? Check out our infomercial!

[LINK TO RESOURCE LIBRARY FORM](#)

If you have any further questions please contact:  
ClaireClemons@smsd.org  
3089772@smsd.org

# Link to ROCKY'S RUNDOWN:

<https://view.gogipper.com/page/1924766>



## STUDENT ATHLETES OF THE MONTH

- RAIDER SOCCER - Alek Beckley

"You gain strength, courage and confidence by every experience in which you really stop to look fear in the face. You must do the thing you think you cannot do."

- RAIDER VOLLEYBALL - Maddie McCool

**RAIDERS**



# 2024 SOUTH AREA ELEMENTARY SPEECH + DEBATE WORKSHOP

## RAIDER SPEECH + DEBATE SPEAKTACULAR

### SESSION 1: DEBATE

CAMPERS WILL LEARN DEBATE GAMES & DRILLS AND THEN LEARN HOW TO DEBATE ABOUT A FUN AGE-APPROPRIATE TOPIC & DEBATE ONE ANOTHER AT A CAMP TOURNEY.

### SESSION 2: SPEECH

CAMPERS WILL LEARN SPEECH GAMES & DRILLS AND CHOOSE A STORY TO TELL (STORIES PROVIDED) OR WRITE A SPEECH OF THEIR OWN & WORK TO BRING THAT PERFORMANCE TO LIFE.

## SAT, NOV. 16TH

8:10AM TO 3:10PM  
SHAWNEE MISSION SOUTH LIBRARY  
ALL CURRENT 3RD-6TH GRADERS WELCOME



SCAN HERE OR GO TO  
[TINYURL.COM/SMSELEMENTARY](https://tinyurl.com/smselementary)  
TO REGISTER

REGISTRATION FEE:  
ONE SESSION - 50\$  
BOTH SESSIONS - 80\$

ANY QUESTIONS? CONTACT [CAROLYNCOOK@SMSD.ORG](mailto:CAROLYNCOOK@SMSD.ORG)

# DO GOOD WITH CHIPOTLE



## CHIPOTLE FUNDRAISER FOR SHAWNEE MISSION SOUTH SPEECH AND DEBATE

25% OF EVENT SALES GET DONATED TO THE CAUSE

WEDNESDAY, NOVEMBER 13TH | 4-8PM  
6879 W 91ST ST, OVERLAND PARK, KS, 66212

ORDER ONLINE FOR PICKUP USING CODE **3H9DQM4**  
OR SHOW THIS FLYER IN RESTAURANT



For online orders to count towards the fundraiser, they must be placed for pickup only from the restaurant location of, and during the hours of, the fundraiser. Delivery orders and gift cards do not qualify. \$150 minimum event sales required to receive any donation.

# SM South Athletics & Activities Calendar Nov 11-16, 2024

Access all SM South athletics and activity event calendar with real-time updates at [www.sunflowerleague.org](http://www.sunflowerleague.org)

## Monday, November 11, 2024 – Traditional 7 Period Schedule

7:00pm [National Honor Society](#) Auditorium

*Initiation*

## Tuesday, November 12, 2024 – BLOCKS 2 –Advisory–4 –6

1:30pm [Unified Bowling: Varsity Regional](#) vs. Blue Valley West @ Olathe Lanes East

## Wednesday, November 13, 2024 – BLOCKS 1-3-5-7

3:00pm [Athletics](#)

*Senior Athletic Signing*

## Thursday, November 14, 2024 – (Late Start) BLOCKS 2 –Advisory–4 –6

2:40pm [DECA](#) Main Gym

*DECA Dodge Ball Tourney*

## Friday, November 15, 2024 – BLOCKS 1-3-5-7

## Saturday, November 16, 2024

9:00am [National Honor Society](#) Stadium

*NHS presents Raider Family Fun Run and games in the stadium*

*8:30 - 9:00 check in/warm up*

*9:00 - 10:00 run / walk / kids fun*

