



WHITE SETTLEMENT ISD

THE BUZZ: BREWER BEAR MONTHLY



Kelli Alexander & Elena Cantu - West ELA

Beekeeper Brief

Thanks to everyone who completed the Mid-Year Survey before the break. Your feedback truly makes a difference in the decisions that we make. While changes and improvements may take time, our Leadership Team does consider everything you share when we plan for today and the future.

Congratulations to our schools and departments that had at least 50 percent of their team members complete the survey. The following will receive jeans for a week:

- Brewer Middle School
- Tannahill Intermediate
- Blue Haze Elementary
- Fine Arts Academy
- Liberty Elementary
- North STEAM Academy
- RISE Alternative Campus
- Police Department
- Technology Department
- Central Administration

Your principal/director will provide you with the date.

I hope you have a great three-day weekend. Get some rest!

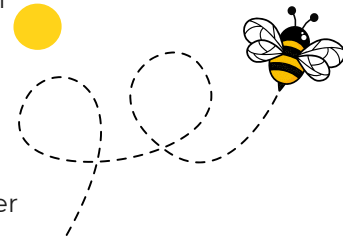
Go Bears!
Superintendent Frank Molinar

What's inside this issue?

- Winter Education Foundation Grant Winners
- Teachers & Employees of Month
- Blue Jean Incentive Winner
- Legislative Update
- School Spirit Nights
- EECU Educators Advantage Checking Account
- Stretch Zone West discount offer
- Calendar of Events

What's a bee's favorite haircut?

Answer on pg. 2



Education Foundation awards \$20,000 in Grants



Becky Marx - North STEAM Academy

The WSISD Education Foundation awarded \$20,000 in innovative teaching grants before the holidays! The foundation will accept applications for the next round of grants starting in May. Look inside for more recipients and additional photos.



Samantha White - Liberty Elementary



Liz Davis - Blue Haze Elementary



Lisa Williams - North STEAM Academy



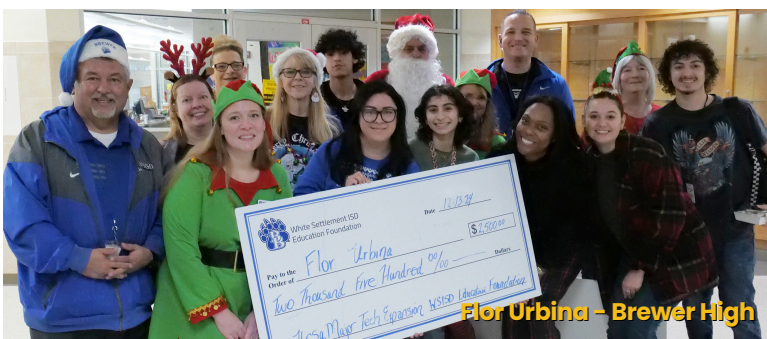
Stephanie Boggs - West ELA



Ashley Swift - Brewer Middle



Nycola Thompson - Brewer High



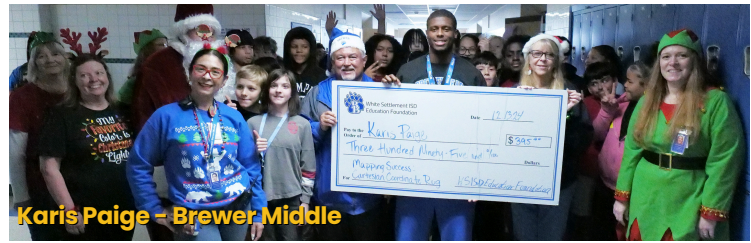
Flor Urbina - Brewer High



Amanda Doll - Fine Arts Academy



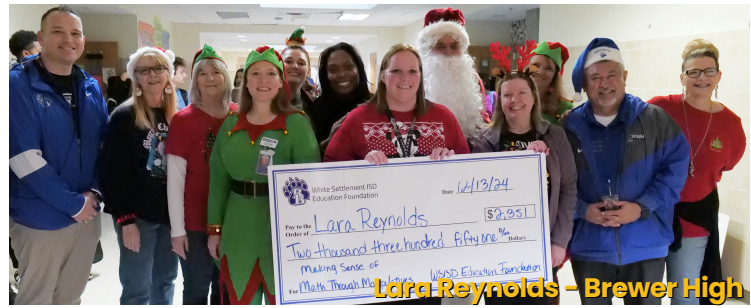
Melissa Galloway - Brewer High



Karis Paige - Brewer Middle



Jonathan Cox - Brewer High



Lara Reynolds - Brewer High

Answer: A buzz cut

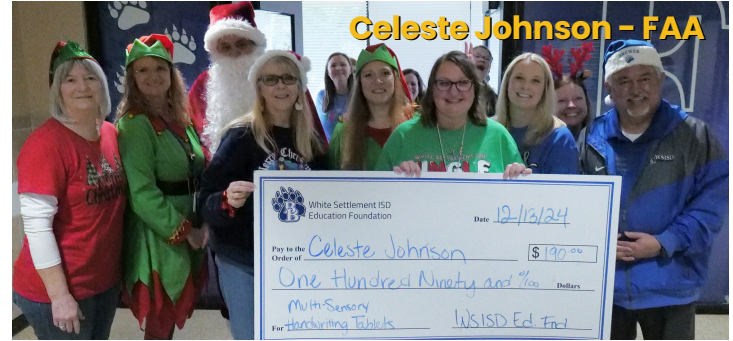
Legislative Update

Congress passed the Social Security Fairness Act (legislation to repeal the Windfall Elimination Provision (WEP) and the Government Pension Offset (GPO) in December, and President Joe Biden signed the bill into law in January.

WEP and GPO were two provisions of Social Security that reduced or sometimes eliminated benefits for certain federal retirees and other public servants, as well as their surviving spouses. The change will provide higher Social Security benefits to public sector retirees.



Sara Mir - West ELA



Celeste Johnson - FAA

BREWER HIGH SCHOOL FINE ARTS DEPARTMENT PRESENTS

INTO THE WOODS

ORCHESTRATED BY Jonathan Tunick MUSIC AND LYRICS BY Stephen Sondheim
BOOK BY James Lapine

BHS Auditorium

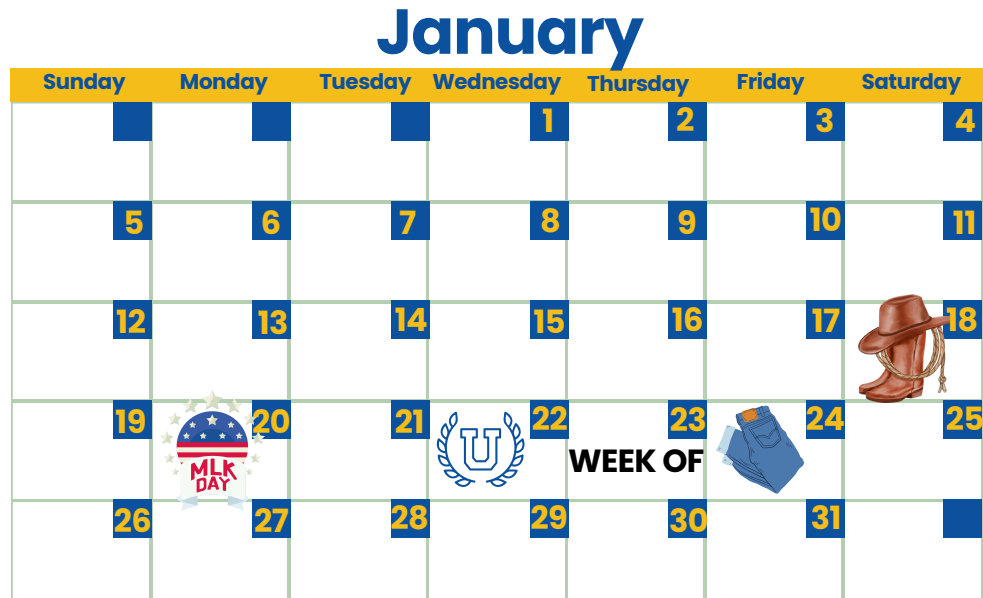
SHOW DATES
January 24 & 25 at 7 p.m.
January 25 & 26 at 2 p.m.

Directed by Aja Jones
Music Directed by Josh Hauptert
Technical Direction by Kurt Bana
Assistant Directed by Allison Grassleed

PURCHASE TICKETS
QR Code
Adult - \$15
Child - \$10

Presented through special arrangement with Music Theatre International (MTI). All authorized performance materials are also supplied by MTI, 421 West 54th Street, New York, NY 10019, Phone: 212-541-4684, Fax: 212-397-4684 www.MTIShows.com

WSISD staff members will receive one free admittance to any performance with their school ID.



Teachers & Employees of Month

Campus/Department	Teacher	Employee
Brewer High	Meagan Clark	Christal Sullivan
Brewer Middle	Jesse Barnes	Shawn Elliott
Tannahill	Murissa Finley	Carolyn Bell
Fine Arts Academy	Stephanie Sanders	Ashtyn Johns
Blue Haze	Tristen Morales	Yessenia Sanchez
Liberty	Kelsey Kenney	Avril Harville
North STEAM	Tiffany Burriss	Johanna Zarate
West ELA	Becky Boyer	Elizabeth Sanchez
Central Admin	Custodial	Operations
Leah Carithers	Veronica Reyes	Don Wester
Child Nutrition	FCLC	Transportation
Teresa Sifuentes	Tiffany Powell	Chuck Mohn
Special Programs	Technology	
Ashley Rennels	Lacey Brewer	

WSISD Education Foundation \$100 Gift Card Winner



Congratulations to Jana Shaw, Operations Secretary and Facilities Coordinator, who won a \$100 gift card through the [Blue Jean Incentive Program!](#)

Employees who sign up for a \$5 monthly payroll deduction or make a lump sum payment of at least \$60 can wear jeans the first Monday of each month and are eligible for monthly drawings for a \$100 gift card and more.

The next Blue Jean Monday will be Monday, Feb. 3.

Stretch Zone West offering free stretch to WSISD employees

Stretch Zone West Fort Worth provides practitioner assisted stretching, and WSISD staff can get their first stretch free and 10 percent off monthly memberships, which start at \$99.

Call (682) 250-3050 to schedule a free consultation stretch or click the [link](#).

Get Paid Early
With Educators Advantage Checking



PLUS

- \$300 Cash Bonus*
- NSF Free Pass*



Click to Open Online eeecu.org/educators

Visit Us eeecu.org/locations



*The Educators Advantage Checking account is only available to personal account holders employed by approved ISDs, Universities, and Colleges located in Collin County, Dallas County, Denton County, Ellis County, Hood County, Johnson County, Parker County, Rockwall County, Tarrant County, and Wise County. To qualify for the \$300 cash bonus, account must be set up on direct deposit with EECU and you must make qualifying payroll direct deposits totaling \$1,500 or more within 90 days of account opening. In order to receive the cash bonus, your checking account must be open and in good standing. The cash bonus does not require any additional activities. The cash bonus will be deposited in your new account within 90 days of completing the qualifying activity requirements. Offer is not available to anyone who has an ownership interest in (including, but not limited to, primary owner or joint owner) any existing EECU checking account or has an ownership interest in a checking account that closed within the last 12 months. EECU reserves the right to limit each member to one new account related incentive per calendar year. Eligibility may be limited based on your account type and ownership role. Bonus is considered income and may be reported to the IRS, as required by applicable law. Not valid with any other offer. Offer availability subject to change at any time without notice. Early availability of your ISD paycheck is based on the timing of the payer's payment notification instruction. Up to 10 NSF fees on your Educators Advantage Checking account will be refunded in each calendar year. EECU employees, board members, and their family members are not eligible for this offer. Membership in EECU is required - membership information available at eeecu.org. Federally insured by NCUA.

EECU offers a checking account designed for educators. Get paid up to two days early and get a \$300 Cash Bonus when you sign up for direct deposit! Visit eeecu.org/educators to open an Educators Advantage Checking Account. For more information, contact [Maribel Moreland](#), Business Development Specialist.

Back A Fellow Bear!



If you own a business you'd like featured in our staff newsletter, click the [link](#) to submit your information!



COMMUNITY CARE NIGHT

15% OF ALL PROCEEDS BENEFIT WSISD EDUCATION FOUNDATION

Benefitting
WSISD EDUCATION FOUNDATION

Tuesday, Jan. 28 • 5-8 P.M.

Dine In, Drive Thru or Order Thru the App Mention WSISD Education Foundation BEFORE ordering or use code Education on app!

Spirit Nights

Dine out and support your schools and organizations! Mention the organization when ordering!

- 1/20 BHS StuCo Raising Cane's Spirit Night
- 1/27 Senior Celebration 2025 Chick-Fil-A Night

WSISD Hope Shirt Sale

White Settlement Independent School District logo

THE WORLD IS BRIGHTER WITH YOU IN IT

CALL/TEXT 988

WITH YOU IN IT

CALL OR TEXT 988 FOR THE NATIONAL CRISIS LIFELINE

WHITE SETTLEMENT INDEPENDENT SCHOOL DISTRICT

THE WORLD IS BRIGHTER WITH YOU IN IT

WHITE SETTLEMENT ISD

All proceeds will benefit WSISD Hope Squad!

Youth XS - 6XL Available!

\$12 Each

+\$2 for 2XL

+\$3 for 3XL

+\$5 for 4-6XL

PRE-ORDER NOW THRU MONDAY, DEC. 2!

<https://wsisd.revtrak.net/staff/wsisd-admin/#/v/hope-squad-shirts-24-25>

We have a few extra Hope Shirts available. Click the [link](#) to purchase your shirt.