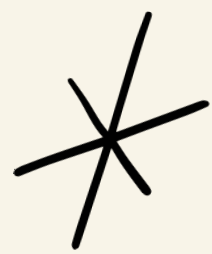




2025
A Big Year
for your
KINDERGARTENER





WELCOME!



Neil Schiller, Principal
Cambridge Primary School



Sara Edwards, Principal
C-I STEAM School



Shane Dordal, Principal
Isanti Primary School



Michelle Glasgow, Coordinator
C-I Schools Online

KINDERGARTEN OPTIONS

Cambridge Primary and Isanti Primary

- School of attendance and busing is based on your home address
- Kindergarten Entrance Week is Sept 2-5, 2025



Cambridge-Isanti STEAM School

- Located within Isanti Intermediate School
- Kindergarten Entrance Week is Sept 2-5, 2025
- Busing is available to all Cambridge-Isanti students

Cambridge-Isanti Schools Online

- Flexible, home-based learning
- First Day September 2, 2025



ALL C-I KINDERGARTEN OPTIONS

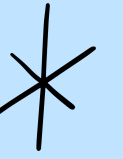
- Taught by the best Kindergarten teachers!
- The same high-quality curriculum to meet the needs of all students
- Specialists - Media, Music, Phy Ed, and Art
- Social, emotional, and personal development with the Five Character Traits
- Use age-appropriate technology to prepare students for lifelong learning
- Positive Behavior Interventions and Supports
- Use Data to Make Instructional Decisions



* HONESTY | RESPECT | RESPONSIBILITY | SELF-DISCIPLINE | COMPASSION



ALL C-I KINDERGARTEN PROGRAMS



- No charge
- Transportation provided within the District -unless within walking distance of approximately 1 mile
- Highly qualified, certified staff
- Same number of school days
- Field Trips into the Community
- Safe Environment - Visitor Management System



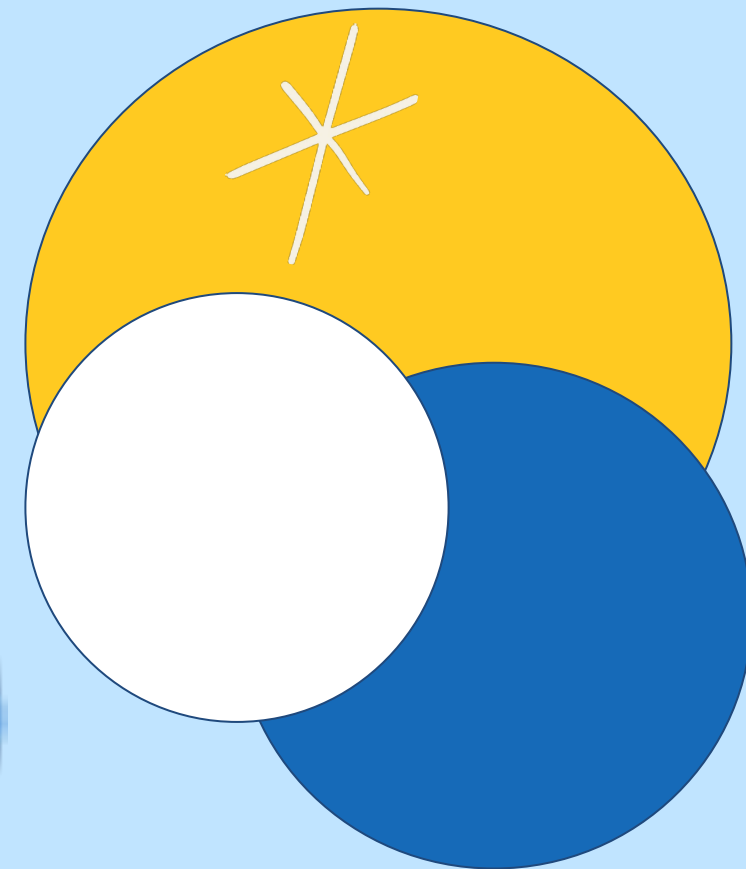
* A TYPICAL KINDERGARTEN DAY

- Morning Meeting / Relationship Building / Calendars
- Structured Literacy / Phonics
- Handwriting
- Science/Social Studies/Health
- Math
- WIN Time (What I Need)
- Specialists (Art, Media, Phy Ed, Music)
- Read Aloud
- Snack break
- Lunch
- Playtime & Recess
- Dismissal Time Routines



STEAM OPPORTUNITIES

Students have the opportunity to participate in Science, Engineering, or Coding activities almost daily!



C-I STEAM SCHOOL

- Located in Isanti, within Isanti Intermediate School
- Science and Engineering Focus
- No Additional Cost to Families
- Students are a community with “Buddy Time”
- Field Trips to Explore our Community
- Daily Science Activity
- Small School Community of 150 students - space is limited



THINGS TO REMEMBER



- **Amazing Teachers**
- Strong **community support** for our schools
- **Your partner** in learning

Our mission is to **EDUCATE**,
EMPOWER and **INSPIRE**
EVERY STUDENT, EVERY DAY
to achieve their full potential.



* ADVENTURE CENTER PROGRAM

- Fee-based before and after school programming
- Available for children in grades PreK-5
- Locations
 - Cambridge Primary School
 - Isanti Primary School
 - IIS/STEAM before school students are bused from IPS to school
 - Isanti Intermediate School (after school only)
- Hours of operation:
 - Before School - 6:00 - 7:15 am
 - After School - 2:00 - 6:00 pm
 - Most Non-School Days - 6:00 am - 6:00 pm at the Cambridge Primary School site



Registration Opens April 1: www.c-ischools.org/adventure-center

EARLY CHILDHOOD SCREENING

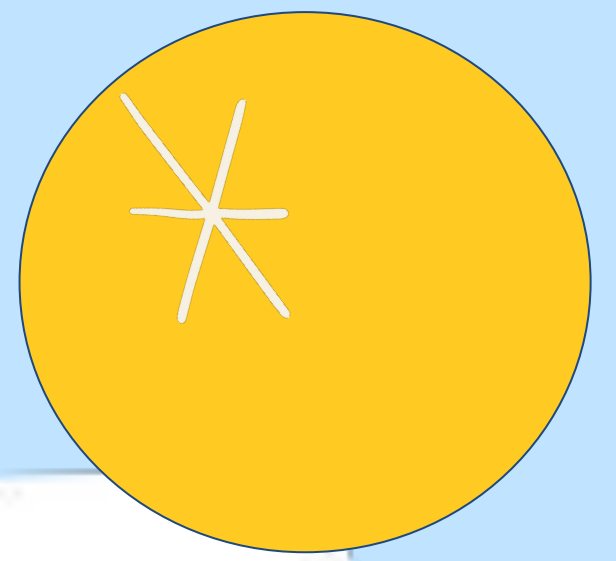
Early Childhood Screening is required by the State of Minnesota for all children prior to kindergarten entrance.

- Quick and simple check of how children are doing between the ages of 3 to 4 years.
- It identifies, at an early stage, if children need extra help before starting school.
- For additional information, call (763) 691-6691 or email earlychildhood@c-ischools.org.
- See one of our early childhood educators tonight.





PRESCHOOL & GEARING UP FOR K



Looking for opportunities for your 4 to 5 year old? We have choices for you!

- **Preschool Classes** run Monday through Friday at Cambridge Intermediate and Isanti Primary Schools, with half day options available. Taught by passionate and skilled instructors, these classes support students in acquiring school-based experience to prepare them for full day Kindergarten in the fall.
- **Summer Gearing Up for Kindergarten** – Students spend time in class with teachers and new friends learning and becoming familiar with school routines. Watch the website for more information this spring!

Register at www.c-ischools.ce.eleyo.com or by calling 763-691-6691.



IMPORTANT DATES

January-February Register for Kindergarten

www.c-ischools.org/enroll

Enroll early, as space is limited and filled on a first come first serve basis.

Visit with Your Child
March 31, 5:00 - 6:00 p.m.
Cambridge-Isanti STEAM
Isanti Primary School
April 3, 5:00 - 6:00 p.m.
Cambridge Primary School

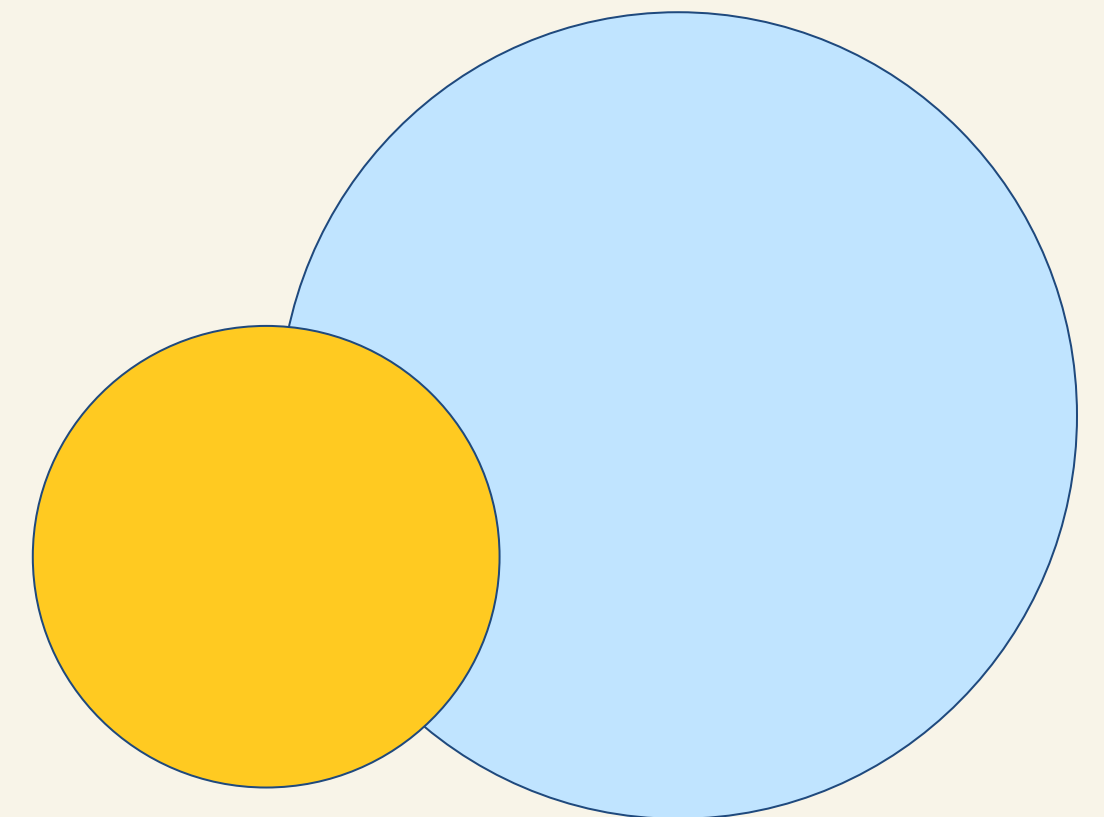
Kindergarten Entrance Week

Modified Schedule for
Kindergarten First Week
September 2 - 5, 2025

REGISTRATION CHECKLIST

Gather the following items before getting started.

- Immunizations** (a partial immunization record is acceptable at the time of registration.)
- Proof of child's age and legal name** (i.e. official birth certificate or passport)
- Proof of residence** (i.e. rental agreement, current utility bill)
- Early Childhood Screening**
- Custodial documents, if applicable.**





QUESTIONS?