



2025-2026 Guide to  
**Career and  
Technical Education,  
Concurrent Enrollment,**  
and Other Programs



Rev. 12/2024



## Table of Contents

|                                                                              |           |
|------------------------------------------------------------------------------|-----------|
| <b>Superintendent, and Executive Director of Schools Message</b> . . . . .   | <b>3</b>  |
| <b>Glossary of Terms</b> . . . . .                                           | <b>5</b>  |
| <b>DCSD Colorado /Career and Technical Education Cluster Model</b> . . . . . | <b>6</b>  |
| <b>Career and Technical Education Pathways</b> . . . . .                     | <b>7</b>  |
| <b>Advanced Placement Courses</b> . . . . .                                  | <b>8</b>  |
| <b>International Baccalaureate Courses</b> . . . . .                         | <b>10</b> |
| <b>DCSD Legacy Campus</b> . . . . .                                          | <b>12</b> |
| <br><b><i>Castle Rock Region</i></b>                                         |           |
| Castle View High School . . . . .                                            | <b>14</b> |
| Douglas County High School . . . . .                                         | <b>15</b> |
| <br><b><i>East Highlands Ranch Region</i></b>                                |           |
| Highlands Ranch High School . . . . .                                        | <b>16</b> |
| Rock Canyon High School . . . . .                                            | <b>17</b> |
| <br><b><i>West Highlands Ranch Region</i></b>                                |           |
| Mountain Vista High School . . . . .                                         | <b>18</b> |
| Thunder Ridge High School . . . . .                                          | <b>19</b> |
| <br><b><i>Parker Region</i></b>                                              |           |
| Chaparral High School . . . . .                                              | <b>20</b> |
| Legend High School . . . . .                                                 | <b>21</b> |
| Ponderosa High School . . . . .                                              | <b>22</b> |
| <br><b><i>Alternative Education Options</i></b>                              |           |
| Daniel C. Oakes High School . . . . .                                        | <b>23</b> |
| Eagle Academy . . . . .                                                      | <b>23</b> |
| eDCSD . . . . .                                                              | <b>24</b> |
| Bridge Program . . . . .                                                     | <b>24</b> |
| VALE: Venture Academy of Leadership and Entrepreneurship . . . . .           | <b>25</b> |
| DC Support Center . . . . .                                                  | <b>26</b> |
| DCSD GED Center . . . . .                                                    | <b>26</b> |
| ASCENT/TREP . . . . .                                                        | <b>26</b> |

A message from Douglas County School District  
Superintendent, **Erin Kane**

---



Welcome to our Postsecondary Readiness Guide. Inside you will find information about all of the Career and Technical Education, Concurrent Enrollment, Work-Based Learning opportunities (and so much more) that the Douglas County School District has to offer to our high school students. Here in DCSD, students can find the post-high school pathway (or pathways) that speak to their passions whether that be college, career, military or other option. We know that no two students are the same and it's so important for every individual to find the pathway or pathways that are right for them. I hope you will take the time to read through the fantastic offerings outlined in this guide. Should you have questions about courses offered, or wish to see some of these classes in person, please reach out to the school to ask questions or request a tour.

We are incredibly thankful to the college and business partners in our community that make it possible for us to save families money on college tuition (DCSD families collectively saved over \$10 million in college tuition last year alone!) and for our students to experience real-world and in-demand careers while still in high school. Thank you for being a part of this truly outstanding school district.

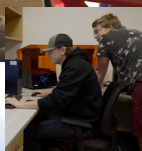
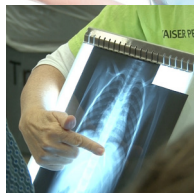
A message from Douglas County School District  
Executive Director of Schools, **Dan McMinimee**

---



The Douglas County School District has provided our high school students high-quality educational opportunities in general education and elective programs for 65 years. The commitment has been one of the cornerstones of our District. These excellent opportunities include concurrent enrollment (CE) courses and career and technical education (CTE) where students are able to earn high school and college credit as well as learn and explore skills, knowledge and abilities to be workforce, college, and career ready. We are committed to providing a comprehensive high school experience that provides our students the opportunities to explore their passions and gain a competitive advantage regardless of their plans for the future. In addition, we believe all students should have access to this programming regardless of transportation, enrollment or funding challenges. This document is our effort at sharing all of the opportunities that exist in our District in concurrent enrollment and career and technical education, as well as other programming available to students. We will be constantly updating this information as more programming is added. Please check back on the District website frequently for the most up-to-date information.







## Glossary of Terms

---

### **Postsecondary Readiness**

Guiding students through discovery, exploration, and skill development to find a purpose and determine the best path for the future. Postsecondary Readiness programming offers pathways to careers, college, military service, and continued education or training.

### **Career and Technical Education**

Career and Technical Education is a state designation for rigorous academic programs that offer a clear program of study under a qualified, credentialed teacher integrating real world learning to prepare students for high-skill, high-wage, in-demand career fields. CTE programs offer students opportunities to apply learning, develop leadership, and enhance employability skills through Career and Technical Student Organizations (CTSOs); industry-recognized certifications, and access to work-based learning experiences.

### **Concurrent Enrollment**

Concurrent enrollment provides high school students with the opportunity to enroll in postsecondary (college-level) courses and earn both high school and college credits with no tuition costs (excluding course fees and materials). Depending on availability and in accordance with District policy, students may apply to take concurrent enrollment classes in their high school or on a college campus. Concurrent enrollment also includes postsecondary Career and Technical Education (CTE) courses, enabling students to earn credit that can be applied towards an industry certification.

Concurrent enrollment courses are taught at each comprehensive high school by Douglas County School District teachers who have been approved as adjunct professors by an accredited institution of higher learning.

### **“ASCENT” Legislation**

Accelerating students through Concurrent Enrollment (ASCENT) is a fifth-year high school program that allows students to participate in concurrent enrollment following their senior year. Qualified students who have completed at least 9 credit hours of postsecondary coursework prior to completion of their senior year may be eligible for the ASCENT Program. In essence, the ASCENT program offers eligible students the opportunity to attend classes at a Colorado community college, tuition free. We believe demand for concurrent enrollment opportunities will increase in our school district and across Colorado, and DCSD wants to be ready.

### **Pathways**

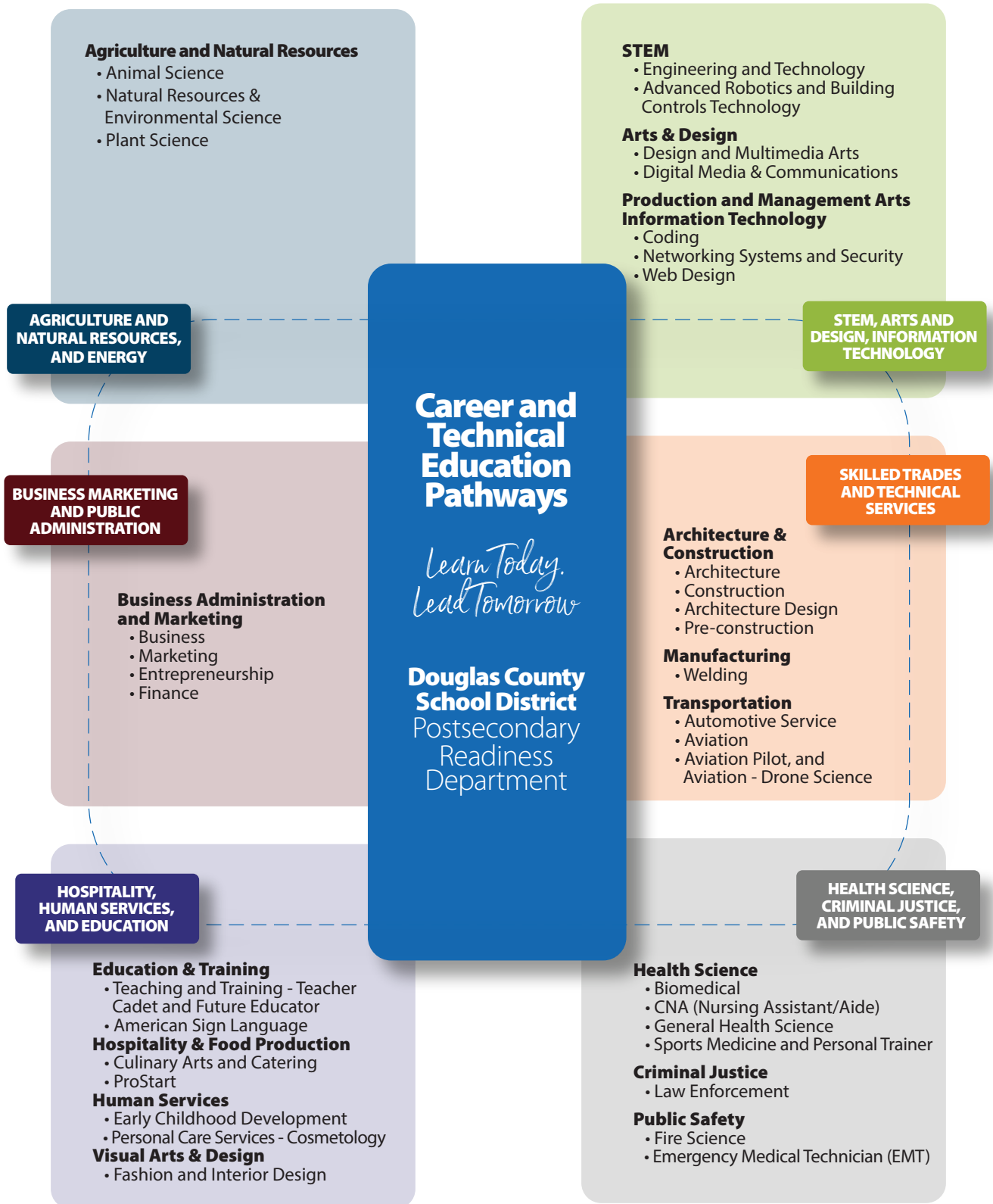
Pathways demonstrate a connection between learning progressions, advanced course options, instruction that supports skill development, stackable credentials, and work-based learning experiences to prepare students for training, education, military service, and/or advancement in a career field. Pathway programs offer DCSD students opportunities to explore, engage, and excel in learning that prepares them for success in the real world.

### **Work-Based Learning**

Work-based learning encompasses a continuum of experiences that move students from Learning About Work to Learning through Work to Learning At Work. These experiences, a vital part of every CTE program, support students in making informed choices about a future career pathway and enhance career readiness skills. Options include internships, industry-sponsored projects, pre-apprenticeships, credit-for-work, clinical experiences, and more.

### **Dual Enrollment**

Dual enrollment includes courses or programs that offer students college-level credit outside of the Concurrent Enrollment Programs Act. This option differs from Concurrent Enrollment (CE) in definition, funding model, and often postsecondary provider type with most offered by four-year institutions. Dual enrollment courses are not required to transfer, plus students and their families may be required to pay for courses.





# Douglas County School District

## Career and Technical Education Pathways

| Career & Technical Education Course                               | Where Offered                                                                                                                                                                                                                                     |
|-------------------------------------------------------------------|---------------------------------------------------------------------------------------------------------------------------------------------------------------------------------------------------------------------------------------------------|
| ACE - Cooperative Education                                       | Highlands Ranch High School                                                                                                                                                                                                                       |
| Advanced Robotics                                                 | Legacy Campus                                                                                                                                                                                                                                     |
| Advanced Manufacturing <sup>*available Fall 2026</sup>            | Legacy Campus                                                                                                                                                                                                                                     |
| Agricultural and Natural Resource Management                      | Douglas County High School                                                                                                                                                                                                                        |
| Architectural Engineering (Drafting)                              | Legacy Campus                                                                                                                                                                                                                                     |
| Automotive/Vehicle Maintenance                                    | Douglas County High School<br>Ponderosa High School                                                                                                                                                                                               |
| Aviation / Drone Science                                          | Highlands Ranch High School                                                                                                                                                                                                                       |
| Aviation (Pre-pilot concentration)                                | Legacy Campus                                                                                                                                                                                                                                     |
| Biotechnology                                                     | Rock Canyon High School                                                                                                                                                                                                                           |
| Broadcast Journalism                                              | Castle View High School<br>Mountain Vista High School                                                                                                                                                                                             |
| Building Controls Technology                                      | Legacy Campus                                                                                                                                                                                                                                     |
| Business and Marketing                                            | Castle View High School<br>Chaparral High School<br>Douglas County High School<br>Highlands Ranch High School<br>Legend High School<br>Mountain Vista High School<br>Ponderosa High School<br>Rock Canyon High School<br>ThunderRidge High School |
| Coding (Information Technology)                                   | Castle View High School<br>Highlands Ranch High School<br>Legend High School<br>Mountain Vista High School                                                                                                                                        |
| Construction                                                      | Douglas County High School<br>Ponderosa High School<br>ThunderRidge High School<br>Legacy Campus <sup>*available Fall 2026</sup>                                                                                                                  |
| Cosmetology                                                       | Highlands Ranch High School                                                                                                                                                                                                                       |
| Criminal Justice                                                  | Legend High School<br>Rock Canyon High School                                                                                                                                                                                                     |
| Culinary (Prostart)                                               | ThunderRidge High School<br>Legacy Campus<br>Mountain Vista High School                                                                                                                                                                           |
| Cybersecurity (Information Technology)                            | Highlands Ranch High School<br>Mountain Vista High School                                                                                                                                                                                         |
| Education (Family and Consumer Sciences)                          | Chaparral High School<br>Douglas County High School<br>Highlands Ranch High School<br>Mountain Vista High School<br>Ponderosa High School                                                                                                         |
| Electrical                                                        | Legacy Campus <sup>*available Fall 2026</sup>                                                                                                                                                                                                     |
| Electric Vehicle Maintenance & Repair                             | Legacy Campus <sup>*available Fall 2026</sup>                                                                                                                                                                                                     |
| EMT/EMS (Emergency Medical Technician/Emergency Medical Services) | Rock Canyon High School<br>Legacy Campus                                                                                                                                                                                                          |
| Filmmaking                                                        | Highlands Ranch High School<br>Mountain Vista High School<br>Rock Canyon High School                                                                                                                                                              |
| Future Educator                                                   | Legacy Campus                                                                                                                                                                                                                                     |
| Fire Science                                                      | Rock Canyon High School                                                                                                                                                                                                                           |

| Career & Technical Education Course                                                                                                                                                                                                                                        | Where Offered                                                                                                                                                                                                                                                      |
|----------------------------------------------------------------------------------------------------------------------------------------------------------------------------------------------------------------------------------------------------------------------------|--------------------------------------------------------------------------------------------------------------------------------------------------------------------------------------------------------------------------------------------------------------------|
| Health Science                                                                                                                                                                                                                                                             | Legend High School<br>Mountain Vista High School<br>Legacy Campus                                                                                                                                                                                                  |
| Hospitality and Foods (Family and Consumer Sciences)                                                                                                                                                                                                                       | Douglas County High School<br>Legacy Campus<br>Mountain Vista High School<br>Ponderosa High School<br>ThunderRidge High School                                                                                                                                     |
| Heating, Ventilation, and Air Conditioning (HVAC) <sup>*available Fall 2026</sup>                                                                                                                                                                                          | Legacy Campus                                                                                                                                                                                                                                                      |
| Interior and Fashion Design (Family and Consumer Sciences)                                                                                                                                                                                                                 | Chaparral High School<br>Douglas County High School<br>Highlands Ranch High School<br>Mountain Vista High School<br>ThunderRidge High School                                                                                                                       |
| Multimedia/Filmmaking                                                                                                                                                                                                                                                      | Highlands Ranch High School<br>Mountain Vista High School<br>Rock Canyon High School                                                                                                                                                                               |
| Multimedia Design                                                                                                                                                                                                                                                          | Chaparral High School<br>Legend High School                                                                                                                                                                                                                        |
| Multimedia and Photo                                                                                                                                                                                                                                                       | Highlands Ranch High School<br>Mountain Vista High School<br>ThunderRidge High School                                                                                                                                                                              |
| Network Security (Information Technology)                                                                                                                                                                                                                                  | Castle View High School<br>Legacy Campus                                                                                                                                                                                                                           |
| Nursing/CNA (Certified Nurse Assistant)                                                                                                                                                                                                                                    | Legacy Campus                                                                                                                                                                                                                                                      |
| STEM/Engineering                                                                                                                                                                                                                                                           | Castle View High School<br>Chaparral High School<br>Highlands Ranch High School<br>(Project Lead the Way)<br>Legend High School<br>Mountain Vista High School<br>Ponderosa High School<br>Rock Canyon High School                                                  |
| Theater Tech                                                                                                                                                                                                                                                               | Castle View High School<br>Chaparral High School<br>Highlands Ranch High School<br>Mountain Vista High School                                                                                                                                                      |
| Web Design (Information Technology)                                                                                                                                                                                                                                        | Castle View High School<br>Chaparral                                                                                                                                                                                                                               |
| Welding                                                                                                                                                                                                                                                                    | Ponderosa High School<br>ThunderRidge High School                                                                                                                                                                                                                  |
| Work-based Learning Experiences<br>Community-based Internships,<br>School-based Internships,<br>Industry-sponsored projects,<br>Supervised Entrepreneurial Experiences,<br>Clinical or Field Experiences, and<br>Pre-apprenticeships.<br><br>Work-based Learning continuum | Castle View High School<br>Chaparral High School<br>Douglas County High School<br>Highlands Ranch High School<br>Legend High School<br>Mountain Vista High School<br>Ponderosa High School<br>Rock Canyon High School<br>ThunderRidge High School<br>Legacy Campus |

# Douglas County School District

## Advanced Placement Courses

\*All classes weighted on a 5.0 scale

| Advanced Placement Courses                   | Where Offered                                                                                                                                                                                                                                     |
|----------------------------------------------|---------------------------------------------------------------------------------------------------------------------------------------------------------------------------------------------------------------------------------------------------|
| <b>*AP African American Studies</b>          | Highlands Ranch High School                                                                                                                                                                                                                       |
| <b>*AP Art History</b>                       | Highlands Ranch High School                                                                                                                                                                                                                       |
| <b>*AP 2-D Art &amp; Design</b>              | Castle View High School<br>ThunderRidge High School                                                                                                                                                                                               |
| <b>*AP 2-D Art &amp; Design: Graphic</b>     | Chaparral High School<br>Mountain Vista High School<br>Ponderosa High School<br>Rock Canyon High School<br>ThunderRidge High School                                                                                                               |
| <b>*AP 2-D Art &amp; Design: Photography</b> | Chaparral High School<br>Douglas County High School<br>Highlands Ranch High School<br>Legend High School<br>Mountain Vista High School<br>Ponderosa High School<br>Rock Canyon High School<br>ThunderRidge High School                            |
| <b>*AP 3-D Art &amp; Design</b>              | Castle View High School                                                                                                                                                                                                                           |
| <b>*AP 3-D Art &amp; Design: Ceramics</b>    | Chaparral High School<br>Douglas County High School<br>Highlands Ranch High School<br>Legend High School<br>Mountain Vista High School<br>Ponderosa High School<br>ThunderRidge High School                                                       |
| <b>*AP 3-D Art &amp; Design: Jewelry</b>     | Chaparral High School<br>Douglas County High School<br>Highlands Ranch High School<br>Legend High School<br>Mountain Vista High School<br>Ponderosa High School                                                                                   |
| <b>*AP Biology</b>                           | Castle View High School<br>Chaparral High School<br>Douglas County High School<br>Highlands Ranch High School<br>Legend High School<br>Mountain Vista High School<br>Ponderosa High School<br>Rock Canyon High School<br>ThunderRidge High School |
| <b>*AP Calculus AB</b>                       | Castle View High School<br>Chaparral High School<br>Douglas County High School<br>Highlands Ranch High School<br>Legend High School<br>Mountain Vista High School<br>Ponderosa High School<br>Rock Canyon High School<br>ThunderRidge High School |
| <b>*AP Chemistry</b>                         | Castle View High School<br>Chaparral High School<br>Douglas County High School<br>Highlands Ranch High School<br>Legend High School<br>Mountain Vista High School<br>Ponderosa High School<br>Rock Canyon High School<br>ThunderRidge High School |

|                                       |                                                                                                                                                                                                                                                   |
|---------------------------------------|---------------------------------------------------------------------------------------------------------------------------------------------------------------------------------------------------------------------------------------------------|
| <b>*AP Chinese Language/Culture</b>   | Chaparral High School<br>Highlands Ranch High School<br>Rock Canyon High School                                                                                                                                                                   |
| <b>*AP Comparative Government</b>     | Rock Canyon High School                                                                                                                                                                                                                           |
| <b>*AP Computer Science A</b>         | Castle View High School<br>Chaparral High School<br>Mountain Vista High School<br>Rock Canyon High School<br>ThunderRidge High School                                                                                                             |
| <b>*AP Computer Science Principle</b> | Douglas County High School<br>Highlands Ranch High School<br>Mountain Vista High School<br>Rock Canyon High School<br>ThunderRidge High School                                                                                                    |
| <b>*AP Drawing</b>                    | Chaparral High School<br>Douglas County High School<br>Highlands Ranch High School<br>Legend High School<br>Mountain Vista High School<br>Ponderosa High School<br>Rock Canyon High School<br>ThunderRidge High School                            |
| <b>*AP Environmental Science</b>      | Castle View High School<br>Chaparral High School<br>Douglas County High School<br>Highlands Ranch High School<br>Legend High School<br>Mountain Vista High School<br>Ponderosa High School<br>Rock Canyon High School<br>ThunderRidge High School |
| <b>*AP European History</b>           | Highlands Ranch High School<br>Legend High School<br>Mountain Vista High School<br>Rock Canyon High School                                                                                                                                        |
| <b>*AP French Language/Culture</b>    | Chaparral High School<br>Highlands Ranch High School<br>Mountain Vista High School<br>Rock Canyon High School                                                                                                                                     |
| <b>*AP German Language/Culture</b>    | Castle View High School                                                                                                                                                                                                                           |
| <b>*AP Human Geography</b>            | Castle View High School<br>Chaparral High School<br>Highlands Ranch High School<br>Legend High School<br>Mountain Vista High School<br>Ponderosa High School<br>Rock Canyon High School<br>ThunderRidge High School                               |
| <b>*AP Language &amp; Composition</b> | Castle View High School<br>Chaparral High School<br>Douglas County High School<br>Highlands Ranch High School<br>Legend High School<br>Mountain Vista High School<br>Ponderosa High School<br>Rock Canyon High School<br>ThunderRidge High School |



# Douglas County School District

## Advanced Placement Courses

\*All classes weighted on a 5.0 scale

|                                         |                                                                                                                                                                                                                                                   |
|-----------------------------------------|---------------------------------------------------------------------------------------------------------------------------------------------------------------------------------------------------------------------------------------------------|
| <b>*AP Literature &amp; Composition</b> | Castle View High School<br>Chaparral High School<br>Douglas County High School<br>Highlands Ranch High School<br>Legend High School<br>Mountain Vista High School<br>Ponderosa High School<br>Rock Canyon High School<br>ThunderRidge High School |
| <b>*AP Macroeconomics</b>               | Castle View High School<br>Chaparral High School<br>Highlands Ranch High School<br>Legend High School<br>Mountain Vista High School<br>Ponderosa High School<br>Rock Canyon High School<br>ThunderRidge High School                               |
| <b>*AP Microeconomics</b>               | Chaparral High School<br>Legend High School<br>Mountain Vista High School<br>Rock Canyon High School                                                                                                                                              |
| <b>*AP Music Theory</b>                 | Highlands Ranch High School<br>Legend High School<br>Mountain Vista High School<br>Rock Canyon High School                                                                                                                                        |
| <b>*AP Physics 1: Algebra-Based</b>     | Chaparral High School<br>Douglas County High School<br>Highlands Ranch High School<br>Legend High School<br>Mountain Vista High School<br>Rock Canyon High School<br>ThunderRidge High School                                                     |
| <b>*AP Physics 2: Algebra-Based</b>     | Legend High School<br>Mountain Vista High School<br>Rock Canyon High School                                                                                                                                                                       |
| <b>*AP Physics C - Mechanics</b>        | Castle View High School<br>Chaparral High School<br>Highlands Ranch High School<br>Legend High School<br>Mountain Vista High School<br>Ponderosa High School<br>Rock Canyon High School<br>ThunderRidge High School                               |
| <b>*AP PreCalculus</b>                  | Chaparral High School<br>Ponderosa High School                                                                                                                                                                                                    |
| <b>*AP Psychology</b>                   | Castle View High School<br>Chaparral High School<br>Douglas County High School<br>Highlands Ranch High School<br>Legend High School<br>Mountain Vista High School<br>Ponderosa High School<br>Rock Canyon High School<br>ThunderRidge High School |
| <b>*AP Research</b>                     | Castle View High School<br>Legend High School<br>Rock Canyon High School                                                                                                                                                                          |

|                                       |                                                                                                                                                                                                                                                   |
|---------------------------------------|---------------------------------------------------------------------------------------------------------------------------------------------------------------------------------------------------------------------------------------------------|
| <b>*AP Seminar</b>                    | Castle View High School<br>Rock Canyon High School                                                                                                                                                                                                |
| <b>*AP Spanish Language/Culture</b>   | Chaparral High School<br>Douglas County High School<br>Highlands Ranch High School<br>Legend High School<br>Mountain Vista High School<br>Rock Canyon High School<br>ThunderRidge High School                                                     |
| <b>*AP Spanish Literature/Culture</b> | Castle View High School<br>Mountain Vista High School                                                                                                                                                                                             |
| <b>*AP Statistics</b>                 | Castle View High School<br>Chaparral High School<br>Douglas County High School<br>Highlands Ranch High School<br>Legend High School<br>Mountain Vista High School<br>Ponderosa High School<br>Rock Canyon High School<br>ThunderRidge High School |
| <b>*AP US Government and Politics</b> | Castle View High School<br>Chaparral High School<br>Highlands Ranch High School<br>Legend High School<br>Mountain Vista High School<br>Ponderosa High School<br>Rock Canyon High School<br>ThunderRidge High School                               |
| <b>*AP US History</b>                 | Castle View High School<br>Chaparral High School<br>Douglas County High School<br>Highlands Ranch High School<br>Legend High School<br>Mountain Vista High School<br>Ponderosa High School<br>Rock Canyon High School<br>ThunderRidge High School |
| <b>*AP World History: Modern</b>      | Castle View High School<br>Chaparral High School<br>Legend High School<br>Mountain Vista High School<br>Ponderosa High School<br>Rock Canyon High School<br>ThunderRidge High School                                                              |

# Douglas County School District

## International Baccalaureate Courses

\*All classes weighted on a 5.0 scale

| Advanced Placement Courses     | Where Offered                                          |
|--------------------------------|--------------------------------------------------------|
| *IB Physics SL                 | Douglas County High School                             |
| *IB 20th Century Europe HL II  | ThunderRidge High School                               |
| *IB Art Design HL I            | Douglas County High School<br>ThunderRidge High School |
| *IB Art Design HL II           | Douglas County High School<br>ThunderRidge High School |
| *IB Biology HL I               | Douglas County High School<br>ThunderRidge High School |
| *IB Biology HL II              | Douglas County High School<br>ThunderRidge High School |
| *IB Business Management HL     | ThunderRidge High School                               |
| *IB Business Management SL     | Douglas County High School<br>ThunderRidge High School |
| *IB Chemistry SL               | Douglas County High School                             |
| *IB Computer Science SL        | Douglas County High School                             |
| *IB English HL I               | Douglas County High School<br>ThunderRidge High School |
| *IB English HL II              | Douglas County High School<br>ThunderRidge High School |
| *IB Enviro System/Societies SL | ThunderRidge High School                               |
| IB European History HL I       | ThunderRidge High School                               |
| *IB European History HL II     | ThunderRidge High School                               |
| *IB Film HL                    | ThunderRidge High School                               |
| *IB Film SL                    | ThunderRidge High School                               |
| *IB French V                   | Douglas County High School<br>ThunderRidge High School |
| *IB Global Politics HL         | Douglas County High School                             |
| *IB Global Politics SL         | Douglas County High School                             |
| *IB HL Physics                 | Douglas County High School                             |

|                              |                                                        |
|------------------------------|--------------------------------------------------------|
| *IB Mathematics: A & A HL II | Douglas County High School<br>ThunderRidge High School |
| *IB Mathematics: A & A SL I  | Douglas County High School                             |
| *IB Mathematics: A & A SL II | Douglas County High School<br>ThunderRidge High School |
| *IB Mathematics: A & I SL I  | Douglas County High School                             |
| *IB Mathematics: A & I SL II | ThunderRidge High School                               |
| *IB Music II                 | Douglas County High School                             |
| *IB Music SL                 | Douglas County High School                             |
| *IB Music SL I               | Douglas County High School                             |
| *IB Philosophy HL            | Douglas County High School                             |
| *IB Philosophy SL            | Douglas County High School                             |
| *IB Psychology HL            | Douglas County High School                             |
| *IB Psychology SL            | Douglas County High School                             |
| *IB Spanish ab initio SL II  | ThunderRidge High School                               |
| *IB Spanish V                | Douglas County High School<br>ThunderRidge High School |
| *IB Sports, Exercise... SL   | Douglas County High School<br>ThunderRidge High School |
| *IB TOK I                    | Douglas County High School<br>ThunderRidge High School |
| *IB TOK II                   | Douglas County High School<br>ThunderRidge High School |
| *IB World Theatre HL         | Douglas County High School                             |
| *IB World Theater SL I       | Douglas County High School                             |











LONE TREE

## Legacy Campus

10035 Peoria Street,  
Lone Tree, 80134  
303-387-7800  
[www.legacycampus.org](http://www.legacycampus.org)

### ***"Connecting Passion to Pathway"***

**Our mission is to cultivate a Career & Technical Education environment where post-secondary and industry partnerships provide relevant learning opportunities for high school students and the Douglas County community in order to ensure a competitive advantage and workforce readiness.**

**Located in Lone Tree** (in the former Wildlife Experience located off Lincoln and Peoria), the Legacy Campus opened in August 2023 to junior (11th) and senior (12th) students across Douglas County. We proudly host students from every neighborhood and alternative education DCSD high school. The Legacy Campus also serves DCSD charter school students via a service agreement contract. Our 9 current pathways at Legacy provide students with relevant coursework where they earn college credit and industry certifications. Students will earn college credit from two- and four-year partner institutions to attain industry certifications to be competitive and career-ready.

### **Part-Time Enrollment**

Students attending the Legacy Campus still maintain almost all of their classes at their primary DCSD high school, while attending pathway-specific courses at Legacy for 1-2 classes per semester. Students study topics that prepare them for careers in highly employable fields such as health care, aviation, technology, hospitality, and more. The majority of our students attend classes at Legacy for roughly a 3-hour block of time twice a week (either Monday/Wednesday or Tuesday/Thursday). Friday classes at Legacy are all online.

### **Collegiate and Industry Partners**

The Legacy Campus is excited to partner with the University of Colorado, Metro State University, the University of Colorado at Denver, and Arapahoe Community College to provide concurrent/dual credit opportunities to DCSD students at low or no cost. Our DCSD schools/departments and industry partners are also instrumental in the development of these pathways and opportunities. A full list of courses and industry credentials are available at [www.legacycampus.org](http://www.legacycampus.org).





## Work-Based Learning Options:

Internship and work-based learning opportunities available in each pathway:

**Business and Marketing** - student-run cafe

**Culinary and Hospitality** - student-run cafe, and catered events

**Colorado Restaurant Association Youth Apprenticeship Program**

**Architectural, Engineering, & Construction Firms/Companies**

**Bridge and Significant Support Needs** - student-run cafe, various internship opportunities

**Future Educators/Teachers** - Field Experience,

**DCSD & Legacy Campus Technology Internships**

## \*Course Offerings:

- \*\* **ACC ELT 1206** - Fundamentals of DC/AC
- \*\* **ACC ELT 2455** - Fluid Power
- \*\* **ACC ELT 2367** - Industrial Robotics
- \*\* **ACC ELT 2254** - Industrial Wiring
- \*\* **ACC ELT 2252** - Motors & Controls
- \*\* **ACC EIC 1001** - Electrical Print Reading
- \*\* **ACC AEC 1200** - Print Reading Residential/Commercial
- \*\* **ACC AEC 1510** - Building Materials
- \*\* **ACC AEC 1100** - Introduction to Design Theory
- \*\* **ACC AEC 2220** - Architectural Graphics
- \*\* **ACC AEC 1110** - History of Architecture
- \*\* **ACC AEC 1250** - Architectural Design and Modeling
- \*\* **ACC CAD 1101** - Computer Aided Drafting I
- \*\* **ACC CAD 1102** - Computer Aided Drafting II
- \*\* **ACC CAD 2220** - Revit Architecture
- \*\* **ACC EMS 1021** - EMT Fundamentals
- \*\* **ACC EMS 1022** - Medical Emergencies
- \*\* **ACC EMS 1023** - EMT Trauma Emergencies
- \*\* **ACC EMS 1024** - EMT Special Considerations
- \*\* **ACC EMS 1070** - EMT Clinical
- \*\* **ACC NUA 1001** - Nurse Aide Health Care Skills
- \*\* **ACC NUA 1070** - Nurse Aide Clinical Experience
- \*\* **ACC NUA 1071** - Advanced Nurse Aide Clinical
- \*\* **ACC CNG 1032** - Network Security Fundamentals
- \*\* **ACC CNG 1042** - Introduction to Cloud Computing
- \*\* **ACC CNG 1024** - Network I; Net +
- \*\* **ACC CNG 1025** - Network II; Net +
- \*\* **ACC CNG 1021** - Computer Technician I; A+
- \*\* **ACC CNG 1022** - Computer Technician II, A+
- \*\* **ACC CNG 2043** - Cloud Security & Cyber Law
- \*\* **ACC CNG 2057** - Network Defense & Counter

Measures

## CTE Drafting & Design Work-Based Learning (Internship)

**CTE Aviation WBL**

**CTE Principles of Flight**

**CTE Electrical Construction I**

**CTE Engineering & Technology WBL (Internship)**

**CTE Robotics and Mechatronics/Technology**

**CTE ProStart I (Culinary)**

**CTE ProStart II (Culinary)**

**CTE ProStart III (Culinary)**

**CTE ProStart Youth Apprenticeship (Culinary)**

**Culinary Internship (i.e. CTE Food FCS WBL)**

\*\* **MSU RST 1550** - Food Fundamentals

\*\* **MSU RST 2550** - Food Preparation

**CTE Advanced Flight**

\*\* **MSU AES 1100** - Aviation Fundamentals

\*\* **MSU AES 1710** - Flight Simulation I

\*\* **MSU AES 1400** - Aviation Weather

\*\* **UCD EDHD 1930** - Early Education Field Experience

\*\* **UCD STME 1000** - STEM Methods

\*\* **UCD LCRT 2000** - Children's Literature

\*\* **UCD SPED 1400** - Universal Design for Learning

\*\* **UCD CLDE 1000** - Language, Power, & Identity

\*\* **UCD SPED 1030** - Understanding (dis)Ability in Contemporary Classrooms

**UCD HDFR 1010** - LifeSpan Development

**UCD INTE 2000** - Digital Teaching and Learning

**Student Repair Academy (CTE IT WBL)**

## \*Industry Certificates Available:

EMR

EMT

CNA

OSHA

NC3, SNAP-ON

SACA

FAA Private Pilot Knowledge

Examination preparation

ServeSafe Food Handler

ServeSafe Manager

\*courses and certificates subject to change year by year upon approval

\*\* Class weighted on a 5.0 scale



Monthly  
newsletter



Sign up  
for tours



CASTLE ROCK

## Castle View High School

5254 N. Meadows Drive,  
Castle Rock, 80109  
303-387-9000  
<https://cvhs.dcsdk12.org/>

### Career and Technical Education Programs:

Business and Marketing  
Broadcast Journalism  
Multimedia and Photography  
Information Technology  
Coding  
Network Security  
Game Design  
STEM / Engineering  
Theater Tech

### Work-Based Learning Options:

\*20% required from each pathway

### Concurrent Enrollment Classes:

- \*\***(F)-ASL 1121** - American Sign Language I
- \*\***(F)-ASL 1122** - American Sign Language II
- \*\***ASL 1123** - American Sign Language III
- \*\***ASL 1124** - Intermediate American Sign Language
- \*\***(S)-BUS 1015** - Introduction to Business
- \*\***(S)-BUS 1016** - Personal Finance
- \*\***(S)-CIS 1018** - Introduction to PC Apps
- \*\***(S)-CSC 1019** - Introduction/Programming
- \*\***(F,S)-ENG 1021** - English Composition I
- \*\***(F) ENG 1022** - English Composition II
- \*\***ENG 2021** - Creative Writing
- \*\***ENP 1005** - Intro to Entrepreneurship
- \*\***(S)-HWE 1050** - Human Nutrition
- \*\***(F)-HWE 1062** - Health and Wellness
- \*\***JOU 1005** - Intro to Mass Media
- \*\***(F,S)-LIT 1015** - Introduction to Literature
- \*\***(F)-MAR 2016** - Principles of Marketing
- (F,S)-MAT 1340** - College Algebra
- \*\***(F)-MAT 2431** - Calculus III w/ Engineering Applications
- (S) MAT 1420** - College Trigonometry
- \*\***MAR 1055** - Social Media for Business
- (F)-MUS 1020** - Music Appreciation
- \*\***(F)-SPA 1011** - Spanish Language I
- \*\***(F,S)-SPA 1012** - Spanish Language II
- \*\***(F)-SPA 2011** - Spanish Language III
- \*\***(S)-SPA 2012** - Spanish Language IV
- \*\***SPA 2015** - Spanish for the Professional I

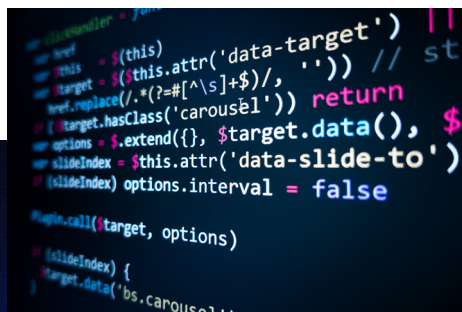
### Certifications:

Solidworks > Engineering

### Other Options:

Advanced Placement

\*\* Course weighted on a 5.0 scale





CASTLE ROCK

**Douglas County High School**

2842 Front Street,  
Castle Rock, 80104  
303-387-1000  
<https://dchs.dcsdk12.org/>

### **Career and Technical Education Programs:**

Agriculture/Natural Resource Management  
Business and Marketing  
Construction  
Family and Consumer Studies (FACS)  
Education  
Interior and Fashion Design  
Hospitality and Foods  
Information Technology  
Vehicle Maintenance / Automotive

### **Work-Based Learning Options:**

\*20% required from each pathway

### **Concurrent Enrollment Classes:**

\*\***(F,S)-BUS -1015** Introduction to Business  
\*\***(S)-BUS 1016** - Personal Finance  
\*\***(F)-ENG 1021** - English Composition I  
\*\***ENP 1005** - Intro to Entrepreneurship  
\*\***(S)-LIT 1015** - Introduction to Literature  
\*\***(F)-MAR 1011** - Marketing Sales  
\*\***(S)-MAR 2016** - Principals of Marketing  
**(F,S)-MAT 1240** - Math Liberal Arts  
\*\***MAT 1260** - Intro to Statistics  
**(F)-MAT 1340** - College Algebra  
**(S) MAT 1420** - College Trigonometry

\*\* Course weighted on a 5.0 scale

### **Other Options:**

Advanced Placement  
International Baccalaureate







EAST HIGHLANDS RANCH REGION

## Highlands Ranch High School

9375 S. Cresthill Lane,  
Highlands Ranch, 80130  
303-387-2500

<https://www.hrhsfalcons.com/>

### Career and Technical Education Programs:

ACE- Alternative Cooperative Education  
Aviation/Drone Science  
Business and Marketing  
Cosmetology  
Family and Consumer Studies (FACS)  
Education  
Interior and Fashion Design  
Filmmaking /Broadcasting  
Broadcast Journalism/Media Production  
Multimedia and Photo  
Information Technology  
Coding  
Cyber Security  
Theater Tech  
STEM/Engineering - Project Lead the Way

### Work-Based Learning Options:

\*20% required from each pathway

### Concurrent Enrollment Classes:

\*\***(S) ASL 1121** - American Sign Language I  
\*\***ASL 1122** - American Sign Language II  
**(F,S)-COM 1150** - Public Speaking  
**(F,S)-COM 1250** - Interpersonal Communication  
\*\***(F)-COS I ACC** - Cosmetology I  
\*\***(S)-COS II ACC** - Cosmetology II  
\*\***(F)-COS III ACC** - Cosmetology III  
\*\***(S)-COS IV ACC** - Cosmetology IV  
\*\***(F)-ENG 1021** - English Composition I  
**HIS 2135** - Colorado History  
\*\***(S)-LIT 1015** - Introduction to Literature  
\*\***(F)-MAR 1011** - Principles of Sales  
\*\***MAR 1055** - Social Media Business  
\*\***(S)-MAR 2016** - Principles of Marketing  
**(F)-MAT 1340** - College Algebra  
**(F,S)-MAT 1420** - College Trigonometry  
**(F,S) MAT 1440** - Pre-Calculus  
\*\***(S)-MAT 2410** - Calculus I  
**MAT 2431** -Calculus III w/ Engineering Applications  
**MAT 2560** - Differential Equations  
\*\***(F,S) SPA 1011** - Spanish Language I  
\*\***SPA1012** - Spanish Language II

\*\* Course weighted on a 5.0 scale

### Certifications:

Adobe Photoshop;  
Adobe Illustrator >Multimedia/Photo  
Autodesk Inventor > Engineering  
CCNA (Cisco)  
GIAC (Cyber Security)  
LPI (Linux)  
Microsoft Office Specialist >  
Business and Marketing  
PCEP (Python)

### Other Options:

Advanced Placement





EAST HIGHLANDS RANCH REGION  
**Rock Canyon High School**

5810 McArthur Ranch Road,  
 Highlands Ranch, 80124  
 303-387-3000  
<https://www.rockcanyonjags.com/>

## Career and Technical Education Programs:

Biotechnology  
 Business and Marketing High School of Business  
 Criminal Justice  
 Emergency Medical Technician (EMT)  
 Fire Science  
 Information Technology  
 Multimedia/Filmmaking  
 STEM / Engineering

## Work-Based Learning Options:

\*20% required from each pathway

## Concurrent Enrollment Classes:

- \*\* (F,Sw)-BUS 1015 - Introduction to Business
- \*\* (F)-CRJ 1010 - Introduction to Criminal Justice
- \*\* (S)-CRJ 1025 - Policing Systems
- \*\* CRJ 1035 - Judicial Functions
- \*\* CRJ 1045 - Correctional Process
- \*\* (F)-EMS 1021 - EMT Fundamentals
- \*\* (F)-EMS 1022 - EMT Medical Emergencies
- \*\* (S)-EMS 1023 - Trauma Emergencies
- \*\* (S)-EMS 1024 - Special Considerations
- \*\* (S)-EMS 1070 - Clinical
- \*\* (F)-ENG 1021 - English Composition I
- \*\* FST 1002 - Emergency Services
- \*\* FST 1010 - Job Placement
- \*\* FST 1060 - CPAT Preparation
- \*\* (S)-LIT 1015 - Introduction to Literature
- \*\* (F)-MAN 2026 - Principles of Management
- \*\* (F)-MAR 2016 - Principles of Marketing
- \*\* (F)-MAT 2431 - Calculus I w/ Engineering Apps
- \*\* (S)-MAT 2560 - Differential Equations

\*\* Course weighted on a 5.0 scale

## Certifications:

Biotechnician Assistant > Biotech  
 High School of Business  
 Emergency Medical Technician (EMT)

## Other Options:

Advanced Placement







WEST HIGHLANDS RANCH REGION

## Mountain Vista High School

10585 Mountain Vista Ridge,  
Highlands Ranch, 80126  
303-387-1500  
<https://mvhs.dcsdk12.org/>

### Career and Technical Education Programs:

Broadcast Journalism  
Business and Marketing  
Family and Consumer Studies (FACS)  
Education  
Hospitality and Foods  
Interior and Fashion Design  
Filmmaking  
Health Science  
Information Technology  
Computer Sciences  
Multimedia and Photo  
STEM / Engineering  
Theater Tech

### Work-Based Learning Options:

\*20% required from each pathway

### Concurrent Enrollment Classes:

\*\***(F) ASL 1121** - American Sign Language I  
\*\***ASL 1122** - American Sign Language II  
\*\***(F,S)-BUS 1015** - Introduction to Business  
\*\***(F,S)-BUS 1016** - Personal Finance  
\*\***(S)-BUS 2016** - Legal Environment of Business  
\*\***(F,S)-CAD 2455** - Solid Works  
\*\***(S) CAD 2660** - 3D Printing/Addit  
\*\***(F)-CIS 1018** - Introduction to PC Applications  
\*\***ECE 1011** - Intro to Early Childhood Education  
\*\***ECE 1111** - Infant/Toddler Development  
\*\***(F)-ENG 1021** - English Composition I  
\*\***ENG 1022** - English Composition II  
\*\***FIN 1010** - Intro to Finance  
\*\***(S)-HIS 1210** - US History Reconstruction  
\*\***(F)-HIS 1220** - US History Civil War  
\*\***HIS 1320** - Western Civilizations 1650-Present  
\*\***(S)-LIT 1015** - Introduction to Literature  
\*\***LIT 2046** - Literature of Women  
\*\***(F) MAR 1055** - Social Media Business  
\*\***(F)-MAR 1060** - Customer Service  
\*\***(S) MAR 2016** - Principals of Marketing  
**(F,S)-MAT 1240** - Math for Liberal Arts  
**(F,S)-MAT 1260** - Introduction to Statistics  
**(F,S)-MAT 1340** - College Algebra  
**(S)-MAT 1420** - College Trigonometry  
\*\***MAT 2520** - Discrete Math  
\*\***(F)-MAT 2430** - Calculus III  
\*\***(F) MAT 2540** - Linear Algebra  
\*\***(S)-MAT 2560** - Differential Equations  
**(F,S)-MGD 1011** - Adobe Photoshop I  
**(F,S)-MGD 1012** - Adobe Illustrator I

\*\* Course weighted on a 5.0 scale

### Certifications:

Adobe Photoshop > Multimedia/Photo  
Adobe Illustrator > Multimedia/Photo  
Solidworks > Engineering

### Other Options:

Advanced Placement







WEST HIGHLANDS RANCH REGION

## ThunderRidge High School

1991 W. Wildcat Reserve Parkway,  
Highlands Ranch, 80129  
303-387-2000  
<https://trhs.dcsdk12.org/>

### Career and Technical Education Programs:

Business and Marketing

Construction

Family and Consumer Studies (FACS)

Hospitality and Foods

Interior and Fashion Design

ProStart

Multimedia and Photo

Welding

### Work-Based Learning Options:

\*20% required from each pathway

### Concurrent Enrollment Classes:

\*\* **BUS 1016** - Personal Finance

\*\* **(F)-BUS 2016** - Legal Env. of Business

\*\* **(F)-ENG 1021** - English Composition I

\*\* **(S)-LIT 1015** - Introduction to Literature

\*\* **MAR 1011** - Principals of Sales

\*\* **(S)-MAR 1055** - Social Media for Business

\*\* **(F,S)-MAR 2016** - Principles of Marketing

\*\* **(F)-MAR 2020** - Principles of Advertising

\*\* **(S)-MAT 1260** - Introduction to Statistics

**(F)-MAT 1340** - College Algebra

**(S)-MAT 1420** - College Trigonometry

\* \*\* **MSU** - Pro Start I

\*\* **MSU** - Pro Start II

\*\* Course weighted on a 5.0 scale

### Certifications:

ProStart > Culinary

### Other Options:

Advanced Placement

International Baccalaureate





PARKER REGION

## Chaparral High School

15655 Brookstone Drive,  
Parker, 80134  
303-387-3500  
<https://chs.dcsdk12.org/>

### Career and Technical Education Programs:

Business and Marketing  
Family and Consumer Studies (FACS)  
Education  
Interior and Fashion Design  
Information Technology  
Multimedia Design  
STEM / Engineering  
Theater Tech

### Work-Based Learning Options:

\*20% required from each pathway

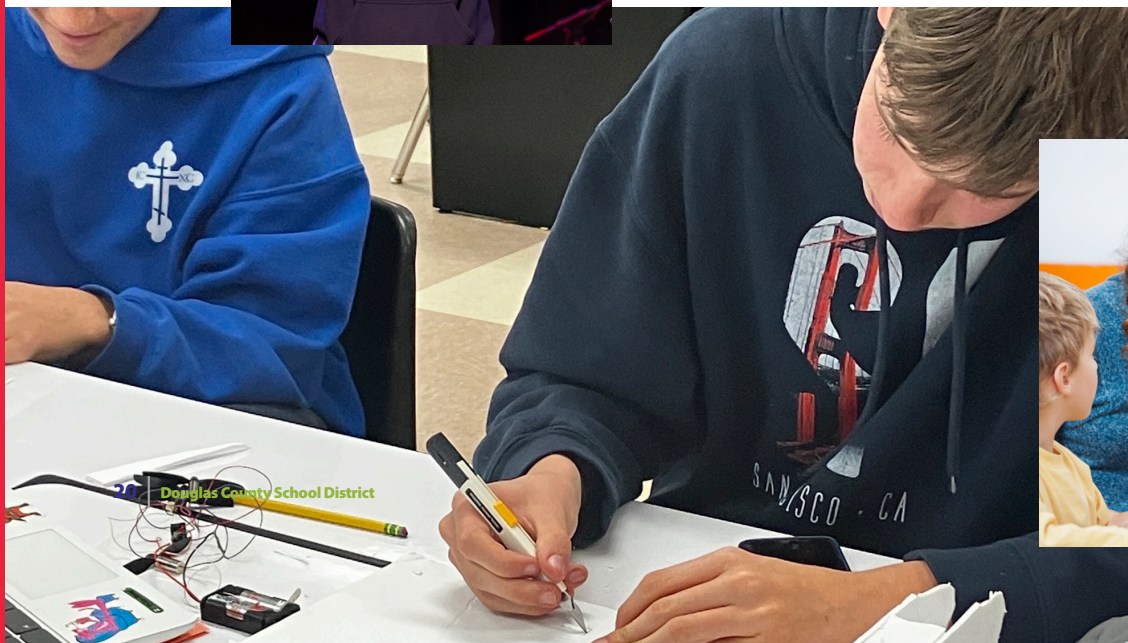
### Concurrent Enrollment Classes:

**ACC BIO 1004** - Biology: A Human Approach  
**ACC BIO 1016** - Biology: Introduction to Human Disease  
\*\* **ACC ENG 1021** - English Composition I  
\*\* **ACC ENG 1022** - English Composition II  
\*\* **ACC LIT 1015** - Introduction to Literature  
\*\* **ACC LIT 2046** - Literature of Women  
**ACC SOC 1001** - Introduction to Sociology I  
**ACC HIS 1310** - Western Civilizations Antiquity  
\*\* **ACC HIS 1320** - Western Civilizations 1650-Present  
\*\* **ACC MAT 2430** - Calculus III  
\*\* **ACC MAT 2560** - Differential Equations  
\*\* **HIS 1210** - US History Recon  
\*\* **HIS 1220** - US History Civil War

\*\* Course weighted on a 5.0 scale

### Other Options:

Advanced Placement







PARKER REGION

## Legend High School

22219 Hilltop Road,  
Parker, 80138  
303-387-4500  
<https://lhs.dcsdk12.org/>

### Career and Technical Education Programs:

Business and Marketing

Criminal Justice

Health Science, Sports Medicine

Athletic Training and Sports Medicine

Multimedia Design

Information Technology

Coding

Networking Security

STEM / Engineering

### Work-Based Learning Options:

\*20% required from each pathway

### Certifications:

Solidworks > Engineering

Entrepreneurship, Stuknet,

Microsoft - Business and Marketing

Physical Therapy Technician/Aide Health Sciences

Revit Engineering

### Other Options:

Advanced Placement

EDGE

### Concurrent Enrollment Classes:

\*\***(F,S)-BUS 1015** - Introduction to Business

\*\***(S)-BUS 1016** - Personal Finance

\*\***BUS 2017** - Business Communications

\*\***(F,S)-CAD 2220** - Revit Architecture

\*\***(F,S)-CAD 2455** - Solidworks

\*\***(F,S)-CAD 2694** - 3D Scanning & Modeling

\*\***(S) CAD 2660** - 3D Printing/Addit,

\*\***(F,S)-CRJ 1025** - Policing Systems

\*\***CRJ 1035** - Judicial Functions

\*\***(S)-CRJ 1045** - Correctional Process

\*\***(F) CRJ 1010** Intro to Criminal Justice

\*\***(S) CRJ 1027** Crime Scene Investigation

\*\***(F,S) CRJ 2009** Criminal Investigation I

\*\***(F,S)-CSC 1019** - Introduction to Program

\*\***(F)-ENG 1021** - English Composition I

\*\***(S)-ENG 1022** - English Composition II

\*\***(F) FRE 1011** French Language I,

\*\***(S) FRE 1012** French Language II,

\*\***FRE 2011** - French Language III

\*\***FRE 2012** - French Language IV

\*\***HIS 1210** - US History Recon

\*\***HIS 1220** - US History Civil War

\*\***(S)-HPR 1040** - Comprehensive  
Medical Terminology

\*\***(F,S)-HWE 1050** - Human Nutrition

\*\***(S) HWE 1062** - Health and Fitness,

\*\***(F,S) LIT 1015** - Intro to Literature

\*\***(F)-MAR 1055** - Social Media for Business

\*\***(F,S)-MAR 2016** - Principles of Marketing

\*\***(F)-MAT 1240** - Math for Liberal Arts

\*\***(S)-MAT 1260** - Introduction to Statistics

**(F)-MAT 1340** - College Algebra

**(S)-MAT 1420** - College Trigonometry

\*\***(F,S)-MGD 1001** - Introduction to Computer Graphics

\*\***(F,S)-MGD 1002** - Introduction to Multimedia

\*\***(F,S)-MGD 1011** - Adobe Photoshop I

\*\***(F,S)-MGD 1012** - Adobe Illustrator I

\*\***(F)-MGD 1013** - Adobe InDesign

\*\***(S)-MGD 1064** - Digital Video Editing

\*\***(S) MGD 1043** Motion Graphic Design

**MUS 1020** - Music Appreciation

\*\* Course weighted on a 5.0 scale







PARKER REGION

## Ponderosa High School

7007 E. Bayou Gulch Road,  
Parker, 80134  
303-387-4000  
<https://phs.dcsdk12.org>

### Career and Technical Education Programs:

Business and Marketing

Construction

Family and Consumer Studies (FACS)

Education

Hospitality and Foods

STEM / Engineering

Vehicle Maintenance / Automotive

Welding

### Work-Based Learning Options:

\*20% required from each pathway

### Concurrent Enrollment Classes:

- \*\* (F)-ASE 1001 - Auto Shop Orientation
  - \*\* (F)-ASE 1003 - Automotive Maintenance I
  - \*\* (F)-ASE 1022 - Automotive Electric Safety Systems
  - \*\* (S)-ASE 2050 - Auto Transmission/Transmission Service
  - \*\* (S)-ASE 2064 - Introduction to HVAC Systems
  - \*\* (F,S)-BUS 1015 - Introduction to Business
  - \*\* (S)-CIS 1018 - Introduction to PC Apps
  - \*\* (F)-ECE 1011 - Introduction to Early Childhood Education
  - \*\* (S)-ECE 111 - Infant/Toddler Development
  - \*\* (F)-ENG 1021 - English Composition I
  - \*\* (S)-ENG 1022 - English Composition II
  - HIS 2135 - Colorado History
  - \*\* (S)-LIT 1015 - Introduction to Literature
  - \*\* (S)-MAN 1028 - Human Relations in Organizations
  - \*\* (S)-MAR 1055 - Social Media for Business
  - \*\* (F)-MAR 2016 - Principles of Marketing
  - \*\* (S)-MAT 1260 - Introduction to Statistics
  - (F)-MAT 1340 - College Algebra
  - (S)-MAT 1420 - College Trigonometry
  - \*\* (F)-SPA 1011 - Spanish Language I
  - \*\* (S)-SPA 1012 - Spanish Language II
  - \*\* (F)-SPA 2011 - Spanish Language III
  - \*\* (F)-SPA 2012 - Spanish Language IV
- \*\* Course weighted on a 5.0 scale

### Certifications:

Automotive Service S/P2 > Auto  
Microsoft Office Specialist > B & M  
ServSafe Manager > Culinary  
Solidworks > Engineering

### Other Options:

Advanced Placement



## ALTERNATIVE EDUCATION OPTIONS



### Daniel C. Oakes High School

961 S. Plum Creek Boulevard,  
Castle Rock, 80104  
303-387-0650  
<https://dcohs.dcsdk12.org/>

Daniel C. Oakes High School is an alternative option and school of choice for students to earn their high school diploma. D.C. Oakes offers smaller class sizes, personal connection with peers and staff, and prides itself on a sense of community and family.



### Eagle Academy

9350 Teddy Lane,  
Lone Tree, 80124  
303-387-0870  
<https://ea.dcsdk12.org/>

Eagle Academy is DCSD's afternoon/evening high school dedicated to serving the needs of high school students seeking an alternative path to earning a high school diploma. At Eagle we embrace the notion of FAMILY and promote this in our ability to foster strong relationships with our students and rekindle their desire to learn and achieve. Eagle also believes in the social and emotional well-being of our students incorporating a four-member mental health team designed to help them find balance in their lives.

#### Career and Technical Education Programs

**ACE** - Career Development  
**ACE** - Work Based Learning  
**ACE** - Capstone

#### Work-Based Learning Options

Concurrent Enrollment Classes  
College Algebra  
Math for Liberal Arts  
Art Appreciation



## ALTERNATIVE EDUCATION OPTIONS



**eDCSD**

373 Inverness Parkway, Suite 207,  
Englewood, 80112  
303-387-9600  
<https://www.edcsd.org/>

eDCSD Online is a K-12 online education program that is offered by Douglas County School District. At eDCSD Online, we understand that not all students thrive in the same environment and not all students learn the same way. Online learning allows a student's creativity, problem-solving, and communication skills to combine with technology for the ultimate educational experience.



**BRIDGE Program**

9350 Teddy Lane,  
Lone Tree, 80124  
303-387-0870  
<https://www.dcsdk12.org/bridge>

The Bridge Transition Program provides specialized instruction to students 18 - 21 years old with disabilities who have continued needs in education, career and adult living skills to work toward their post secondary outcomes. The priority outcomes for our students are Functional Academics, Daily Living Skills, Social Emotional Skills, Employability Skills, and Community Skills are achieved through working on their Individualized Education Plan (IEP) goals.



## **VALE: Venture Academy of Leadership and Entrepreneurship**

15653 Brookstone Drive,  
Parker, 80134  
<https://vale.dcsdk12.org>

VALE is a “small by design” school built on the bedrock of Belonging and Innovation with the mission of preparing our students to be entrepreneurial change makers who are postsecondary ready. By the time VALE students graduate, they will be published, patented practitioners who see problems as opportunities and are therefore marketable immediately in the workforce or college ready depending on their choice.

*“65% of elementary students will have jobs that have yet to be created” (World Economic Forum).*  
VALE is designed for two outcomes. First, we must prepare students for the world that exists right now. Students should be college ready and demonstrate growth and achievement by the traditional measures that are currently used as currency in the education world. Second, we must prepare students for the world that doesn’t exist... yet. In order to do so, VALE’s culture and instructional programming is built around leadership and entrepreneurship. VALE students will embrace, cultivate, and leverage the entrepreneurial mindset to tackle relevant challenges that make them world ready.

### **VALE students:**

- see challenges as opportunities
- have a bias towards action and take initiative
- are flexible, adaptable, and believe in the power of iteration
- are responsible risk takers
- critically think through challenges by understanding perspective, bias, and assumption
- see the power of curiosity, play, and purpose
- value inclusion, belonging, and vulnerability

The following CTE programs in partnership with a local university will foster the entrepreneurial mindset and help students work toward VALE’s three graduation outcomes of being: Published, Patented, Practitioners.

**50010** - Global Leaders and Learners  
**55550** - Career Pathway  
**30456** - Project Management  
**25525** - Entrepreneurship  
**20040S1** - ACE Premier Enterprises  
**79061101** - CTE Business & Marketing Essentials  
**00003** - Work Experience  
**79061105** - CTE Ethical Leadership  
**79061304** - CTE Legal Environment of Business



## ASCENT/TREP

[https://postsecondary.dcsdk12.org/concurrent\\_enrollment/a\\_s\\_c\\_e\\_n\\_t\\_program](https://postsecondary.dcsdk12.org/concurrent_enrollment/a_s_c_e_n_t_program)

**ASCENT** is a state program established by C.R.S. 22-35-108 (House Bill 09-1319) that allows eligible high school students to attend college tuition-free for one year, with Douglas County School District (DCSD) covering the tuition costs.

**TREP** is the **Teacher Recruitment Education and Preparation** program created by SB 21-185. The TREP program creates the opportunity for qualified students in an Educator Pathway to concurrently enroll in postsecondary courses for the two years after the 12th grade year tuition-free for two years, with Douglas County School District (DCSD) covering the tuition costs.

### Eligibility Requirements for Both Programs:

- **Full-Time Enrollment:**
  - **ASCENT:** Minimum of 24 credit hours during the ASCENT year.
  - **TREP:** Must be enrolled full-time at a participating institution.
- **Postsecondary Coursework:**
  - **ASCENT:** Must have earned 9 postsecondary credits during high school through:
    - Concurrent/Dual Enrollment (grade C or higher).
    - AP courses (score of 3+), taken before the spring of senior year.
    - IB courses (score of 4+), taken before the spring of senior year.
  - **TREP:** Must have successfully completed one course in the Educator Pathway during their 12th-grade year.
- **Diploma Withheld:** Students must agree to withhold receiving their high school diploma until they complete the ASCENT/TREP program. They will remain DCSD students during this time, and their diploma will be issued and dated upon the program's completion.
- **FAFSA/CASFA Completion:** Required during the college registration process for both programs.
- **Financial Aid Restrictions:** No state or federal financial aid (work-study, scholarships, or Parent PLUS loans) can be used with ASCENT or TREP.
- **Age and Eligibility Restrictions:**
  - Students must be under 21 years old.
  - No early graduates, super seniors, or college athletes are eligible during the ASCENT/TREP years.

### Application Process:

- 1. Counselor Consultation:** Students work with their high school counselor to ensure they meet eligibility criteria and begin the application process.
- 2. Verification:** The ASCENT Specialist will reverify student eligibility.
- 3. Meetings:** The ASCENT Specialist will schedule individual/group meetings with eligible students to confirm their status and discuss next steps.
- 4. Orientation:** Once identified as recipients, students must attend either an individual or group

orientation. During this session, next steps will be discussed, including introductions to ASCENT/TREP points of contact at partner schools, to ensure students are prepared to register for Fall classes.

**Important Notes:**

- Students must complete an ASCENT/TREP application and agreement, confirm enrollment, and maintain communication throughout the ASCENT/TREP program via phone and personal email.
- Schedules and grades for ASCENT/TREP years are required to be collected by the district ASCENT/TREP representative.
- Policies regarding housing, institutional scholarships, and activity participation, such as sorority/fraternity involvement, must be discussed with partner colleges/universities.
- ASCENT/TREP participants remain students in their Local Education Provider (LEP) following their 12th grade year (1 year for ASCENT/2 years for TREP). The LEP receives ASCENT/TREP specific per-pupil state funding that it uses to pay their college tuition (tuition is discounted ) at the resident community college rate. Students receive their high-school diplomas at the end of their ASCENT/TREP year. [C.R.S. § 22-35-108.5]
- Once DCSD is billed (typically toward the end of each college semester), payment will be made to the partner school or university. Please note, college/university systems may still show an outstanding tuition balance, as they are not always programmed to recognize ASCENT/TREP participants.

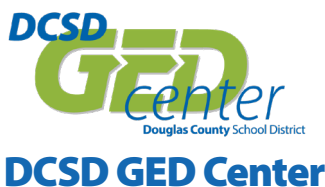
For additional information, students and parents should reach out to the school counselor or the ASCENT/TREP Specialist for guidance.



## Douglas County Support Center

373 Inverness Parkway, Suite #205  
Englewood, 80112  
Main Line: 303-387-9660  
<http://tinyurl.com/DCSupportCenter>

The Douglas County Support Center is a voluntary, free nine-week strength-based transition program intended to support students who are expelled, at-risk of expulsion, exhibit chronic absenteeism, substance use and/or have experienced significant trauma. The students remain enrolled at their home high school but attend (as a secondary enrollment) in-person Monday through Thursday and Fridays virtually. All students receive instruction from licensed, certified teachers and mental health personnel. One-on-one tutoring is available every Monday from 1:00 – 3:00 pm for nine weeks and random drug testing occurs on a monthly basis. Academic credit recovery is available through online classes and direct instruction. Post-secondary counseling and planning is provided to all students. The goal of the program is to assist in removing social-emotional and academic barriers so that students are more available for learning.

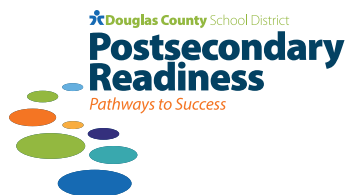
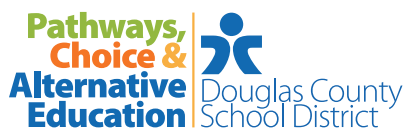


373 Inverness Pkwy, Suite 201,  
Englewood, 80112  
303-387-9675  
[http://tinyurl.com/GED\\_Center](http://tinyurl.com/GED_Center)

The DCSD GED Center is a private, Pearson/VUE/GED Authorized Testing Center.

Successful students have attended high school in a traditional or alternative setting, are at least 17 years of age and are unable to graduate “on time” or with their class due to credit deficiencies. Students may participate in free tutoring to prepare for the GED Test and take the Official GED Tests from this location. Testing is available by appointment only.





**Dan McMinimee**  
**Executive Director**  
**of Schools**

dmcminimee@dcsdk12.org  
303-387-7921

**Keri Stuebinger**

**Assistant Director**

Postsecondary Readiness

303-253-0433

kerith.stuebinger@dcsdk12.org

**Kathleen Fields**

**Administrative Assistant**

303-387-3307

kathleen.fields@dcsdk12.org

## Postsecondary Readiness Team

**Kathy Frommer**

**Work-Based Learning Specialist**

katherine.frommer@dcsdk12.org

303-519-7134

**Matt Chambless**

**Concurrent Enrollment Specialist**

matthew.chambless@dcsdk12.org

303-518-4046

**Leslee Herre**

**Program Specialist**

CTE-CE-WBL

leslee.herre@dcsdk12.org

**Evelyn Peterson**

**Program Specialist**

ASCENT/Extended Year

In compliance with Titles VI & VII of the Civil Rights Act of 1964, Title IX of the Education Amendments of 1972, Section 504 of the Rehabilitation Act of 1973, the Age Discrimination in Employment Act of 1967, the Americans with Disabilities Act, the Genetic Information Nondiscrimination Act of 2008, and Colorado law, the Douglas County School District RE-1 does not unlawfully discriminate against otherwise qualified students, employees, applicants for employment, or members of the public on the basis of disability, race, creed, color, sex, sexual orientation, marital status, national origin, religion, ancestry, or need for special education services. Discrimination against employees and applicants for employment based on age, genetic information, and conditions related to pregnancy or childbirth is also prohibited in accordance with state and/or federal law. Complaint procedures have been established for students, parents, employees, and members of the public. The School District's Compliance Officer and Title IX Coordinator to address complaints alleging sexual harassment under Title IX is Aaron Henderson, 620 Wilcox Street, Castle Rock, Colorado, [complianceofficer@dcsdk12.org](mailto:complianceofficer@dcsdk12.org), 303-387-0127.

#### Outside Agencies

Complaints regarding violations of Title VI, (race, national origin), Title IX (sex, gender), Section 504/ADA (handicap or disability), may be filed directly with the Office for Civil Rights, U.S. Department of Education, 1244 North Speer Blvd., Suite 310, Denver, CO 80204. Complaints regarding violations of Title VII (employment) and the ADEA (prohibiting age discrimination in employment) may be filed directly with the Federal Office of Equal Employment Opportunity Commission, 303 E. 17th Ave., Suite 510, Denver, CO 80202, or the Colorado Civil Rights Commission, 1560 Broadway, Suite 1050, Denver, CO 80202.