

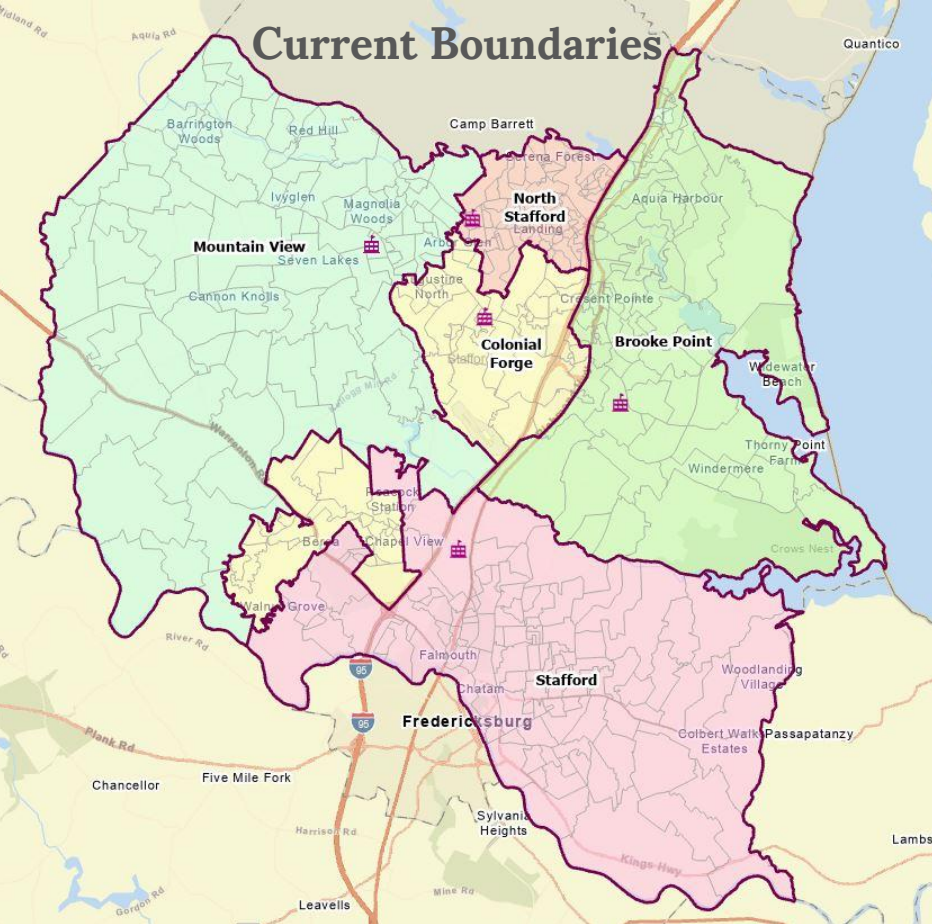
# Scenario F1



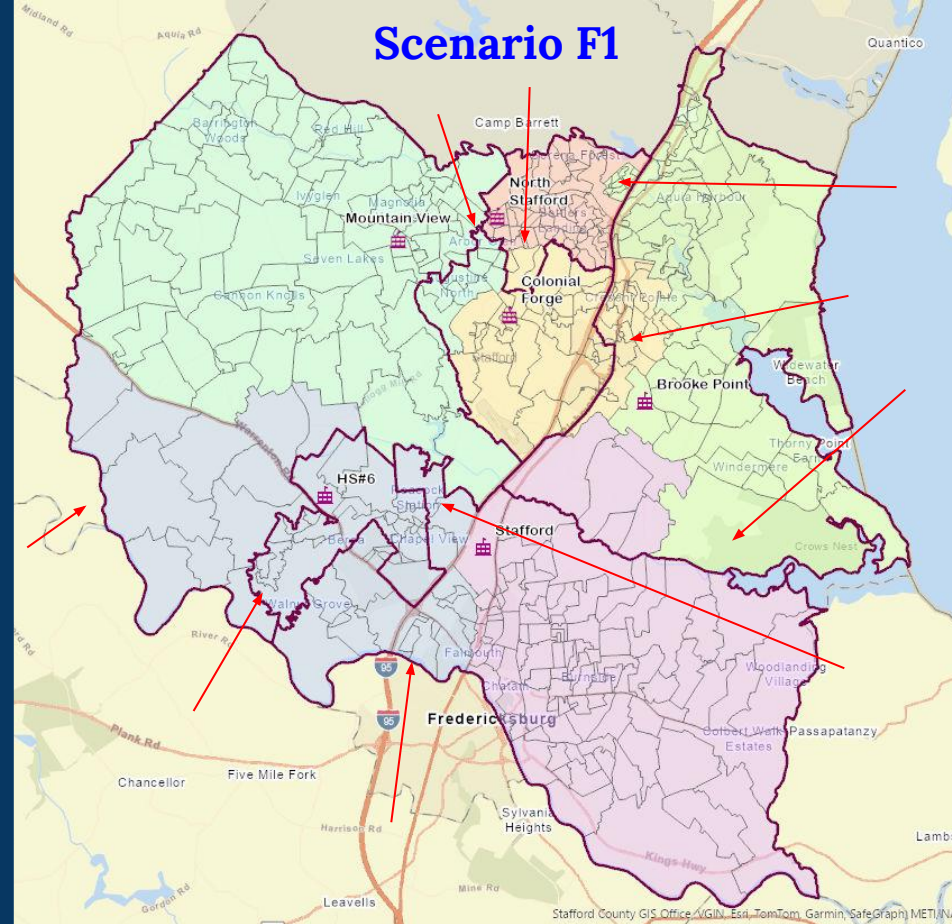
**Stafford County Public Schools**

*Inspire | Empower | Excel*

# Current Boundaries



# Scenario F1



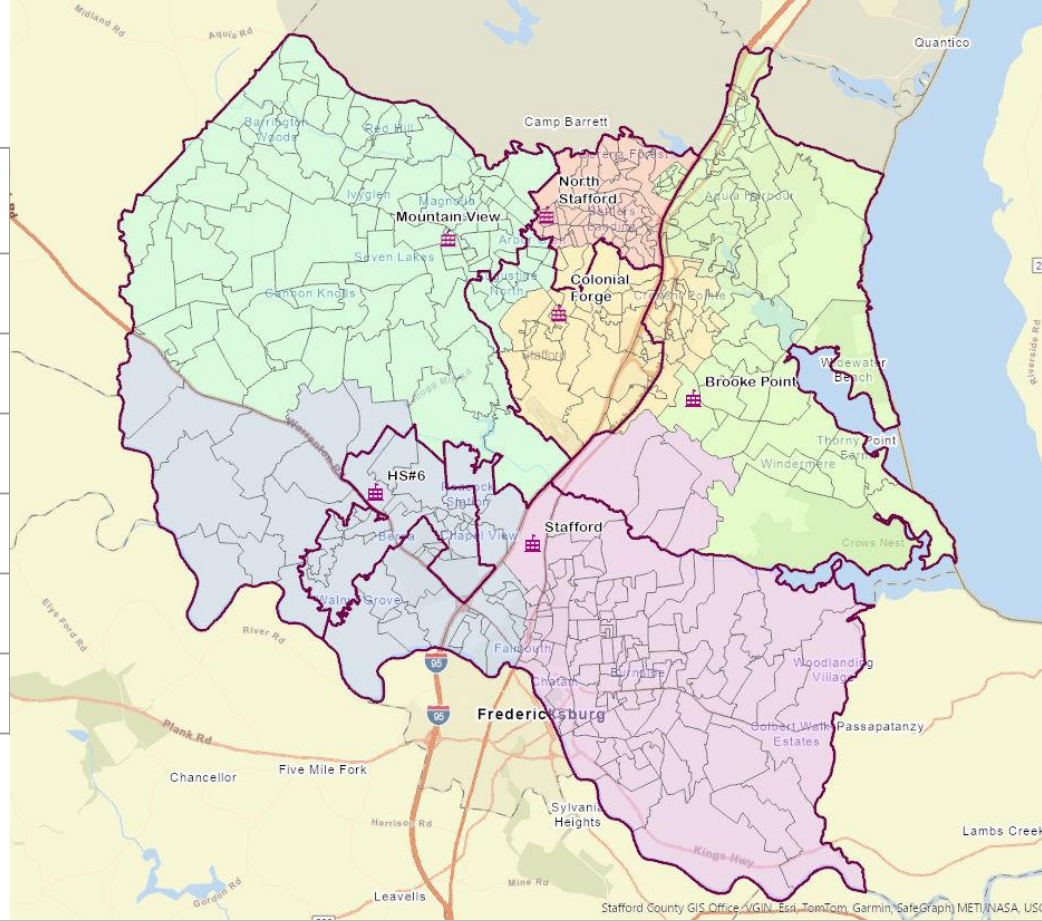
**Stafford County Public Schools**

*Inspire | Empower | Excel*

# Scenario F1

FRL = Free & Reduced Lunch  
b/c = Boundary Change

High School	Capacity Before b/c 2026	Capacity After b/c 2026	Capacity After b/c 2029	Capacity After b/c 2032	FRL% Before	FRL% After
North Stafford	105%	75%	78%	93%	51%	48%
Brooke Point	108%	86%	91%	101%	41%	44%
Colonial Forge	98%	95%	98%	106%	30%	34%
Mountain View	99%	94%	94%	94%	25%	25%
Stafford	108%	88%	91%	94%	38%	35%
HS#6	N/A	79%	86%	99%	N/A	39%



**Stafford County Public Schools**

Inspire | Empower | Excel

# Scenario F1 - Reassigned Student Estimates for 2027

Scenario F1	Brooke Point HS	Colonial Forge HS	HS#6	Mountain View HS	North Stafford HS	Stafford HS	Grand Total
Brooke Point HS	1,490	819				71	2,380
Colonial Forge HS		1,127	886	215			2,228
Mountain View HS			272	1,818			2,090
North Stafford HS	366	112			1,523		2,001
Stafford HS			587			1,816	2,403
<b>Estimated Students in 2027</b>	<b>1,856</b>	<b>2,058</b>	<b>1,744</b>	<b>2,033</b>	<b>1,523</b>	<b>1,887</b>	<b>11,102</b>

## How to read this chart:

- Brooke Point HS is estimated to have 1,490 in-boundary students, plus 366 students from North Stafford, for a grand total of 1,856 students.
- Colonial Forge HS is estimated to have 1,127 in-boundary students, plus 819 students from Brooke Point, plus 112 students from North Stafford, for a grand total of 2,058 students.
- HS#6 is estimated to receive 886 students from Colonial Forge, plus 272 students from Mountain View, plus 587 students from Stafford, for a grand total of 1,744 students.

Note: Totals are subject to rounding error.



Stafford County Public Schools

Inspire | Empower | Excel