

# School Consolidation Recommended Plan

Board of Education Work Session  
January 13, 2025



**School consolidation is a necessary step to align resources with enrollment, ensuring our schools remain strong, sustainable, and focused on delivering the best education for every student.**

# School Consolidation Work Sessions

**JAN 6**

## **Recommended Plan**

- Why Consolidation
- Framework
- Overview of Recommended Plan
- Buildings Timeline

**JAN 13**

## **Buildings & Process**

- Building Capacities & Classrooms
- Redistricting
- Transportation
- Repurposing Buildings
- Staffing

**JAN 27**

## **Students & Instruction**

- Special Education
- Teaching & Learning
- Title I
- Support Plan

# Hold Harmless Step Down Savings

FY26	\$7 million
FY27	\$7 million
FY28	\$6.3 million
FY29	\$5.5 million
FY30	\$4.8 million*

*\*Permanent annual savings*

# FY24 Charter Annual Lease Costs

Boreal Sun Charter	\$374,000
Chinook Charter	\$378,000
Discovery Peak Charter	\$378,000
Effie Kokrine Charter	\$257,000
Watershed Charter	\$381,926

*Most charter leases include a clause specifying an annual rent increase by a set percentage.*

# Community Input & Feedback

## Magnet Idea

A suggested idea was turning a school into a magnet school.

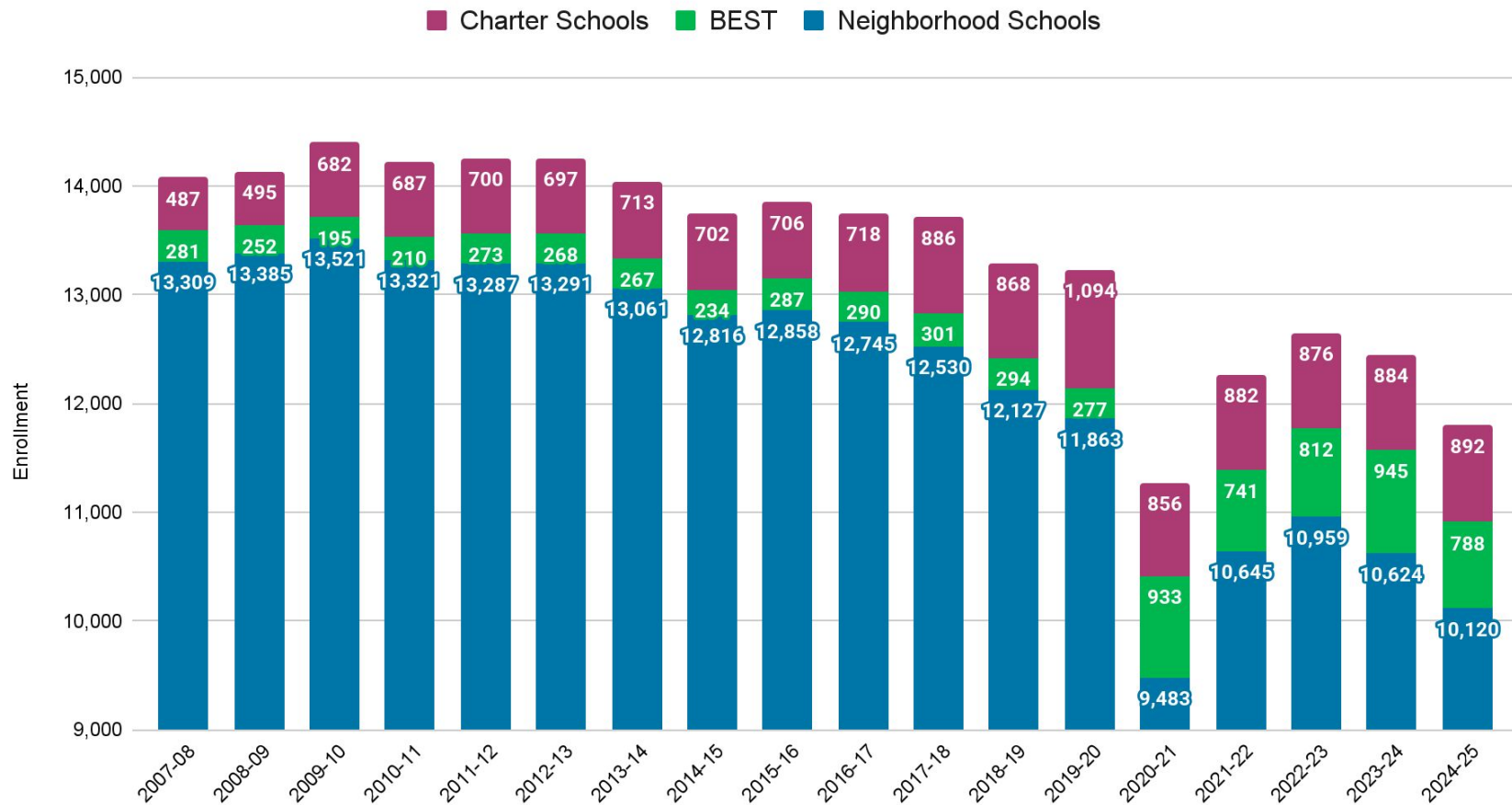
Running a magnet school similar to Barnette Magnet would **increase** the current cost of running the school by **\$450,000**. Usually, there are additional instructional and support staff with a magnet school, increasing costs.

## Redistricting

There are concerns around specific neighborhoods changing to different schools.

We will be going into greater detail tonight on the specific boundary changes and hope to alleviate some of these concerns.

# Neighborhood School Enrollment Changes



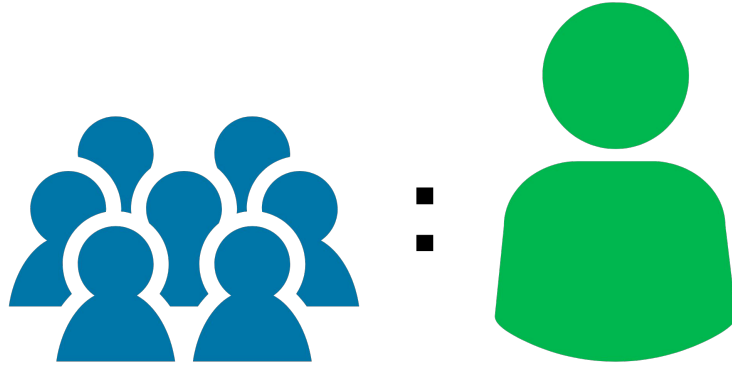
# Questions?





# School Building Capacities

Current compared to recommended plan



## **Pupil-To-Teacher Ratio (Target Class Size)**

The number of students for each teacher. It helps determine how big classes are on average and depends on the school district's budget.

The average elementary school in our district has **22 regular classrooms**.



The average elementary schools in our district is at **67% capacity**.

At that capacity, only **15** of the 22 available classrooms are being used for regular instruction.

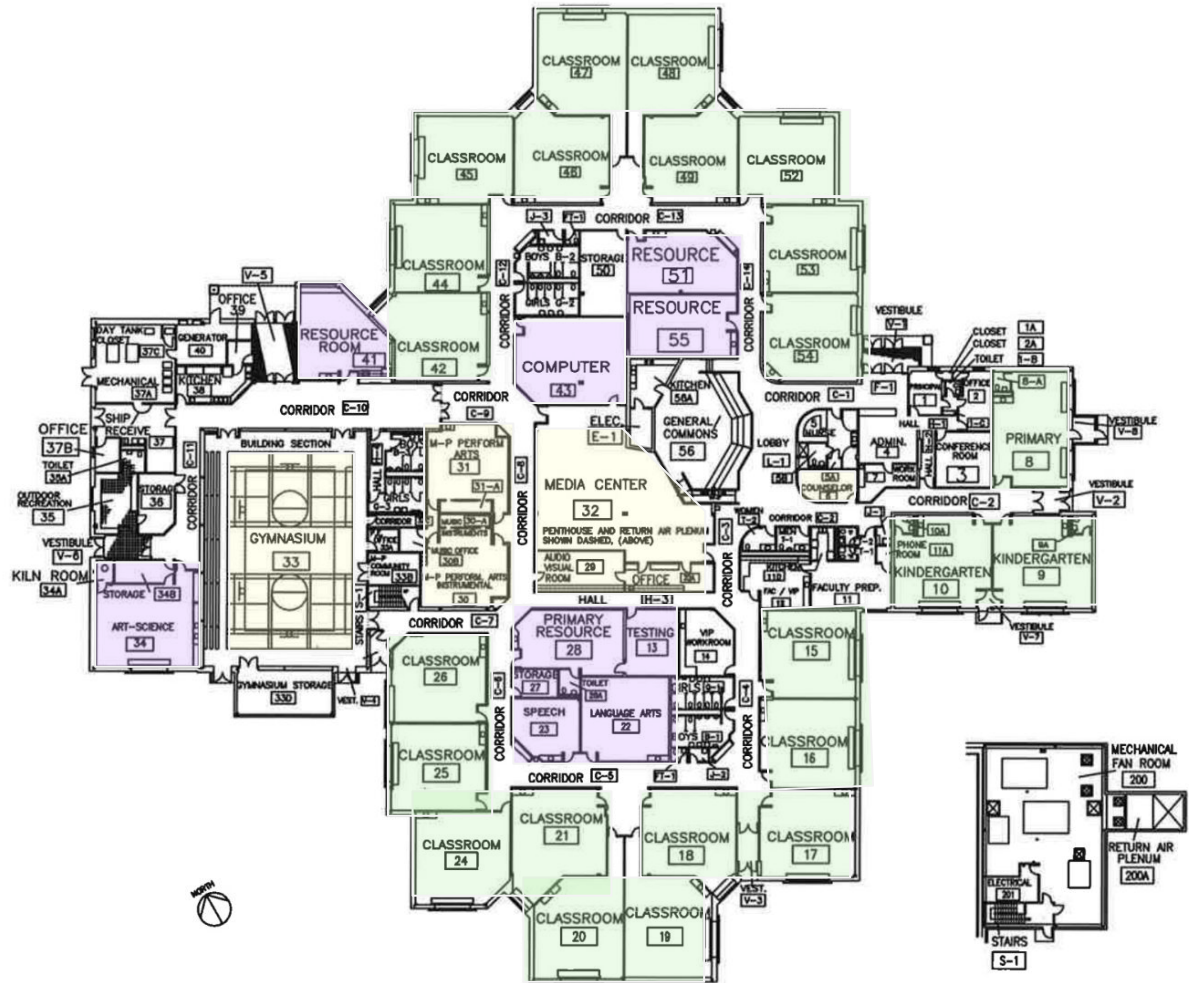


# School Map & Classrooms

Prototypical schools have 18 to 28 rooms appropriate for grade level classes.

Schools are designed with additional spaces for academic supports including resource and special education, counseling, speech therapy, OT/PT, tutoring and school psychologist offices.

The gymnasium, library, music, and art-science rooms are counted separately but can have flexible uses.



# Building Classrooms

FMD carefully counted all standard classrooms in each building, along with extra spaces for special education, pre-K, music, PE, and other supports like OT/PT and counseling.

After a close review, the administration is confident that each school will have enough space for special education programs, including three rooms set aside for IR, ER, and Pre-K programs, with room to grow in the future.

Detailed Classroom and Specialty Space Analasys	Available Rooms	Special Ed. & Support Rooms
Anderson Crawford	23	11
Anne Wien Elementary	23	10
Arctic Light Elementary	28	10
Barnette Elementary	18	12
Denali Elementary	18	10
Ladd Elementary	24	9
North Pole Elementary	23	6
Ticasuk Brown Elementary	23	11
University Park Elementary	24	13
Weller Elementary	23	7
Woodriver Elementary	24	11

# Building Capacity

	DEED Capacity	October 2007		Current (Dec. 6)		Recommended Plan	
		Student Count	% Capacity	Student Count	% Capacity	Student Count	% Capacity
Anderson Crawford	553	309	56%	362	65%	424	77%
Anne Wien Elementary	553	470	85%	367	66%	454	82%
Arctic Light Elementary	596	533	89%	367	62%	491	82%
Barnette Elementary	417	379	91%	413	99%	452	108%
Denali Elementary	422	379	90%	304	72%	380	90%
Hunter Elementary	494	313	63%	326	66%		
Ladd Elementary	553	305	55%	375	68%	497	90%
Midnight Sun Elementary	537	591	110%	325	61%		
North Pole Elementary	495	531	107%	314	63%	472	95%
Pearl Creek Elementary	548	410	75%	386	70%		
Salcha Elementary	76	87	114%	61	80%		
Ticasuk Brown Elementary	556	501	90%	344	62%	505	91%
Two Rivers Elementary	98	109	111%	69	70%		
University Park Elementary	564	515	91%	375	66%	498	88%
Weller Elementary	569	489	86%	410	72%	482	85%
Woodriver Elementary	561	443	79%	348	62%	471	84%
<b>Totals:</b>	<b>7,592</b>		<b>87%</b>		<b>69%</b>	<b>5,126</b>	<b>88%</b>

# Pupil-to-Teacher Ratio Comparison

	Oct. 2007	Current
Kindergarten*	25.1	25
Grades 1-3	23.5	25
Grades 4-5	25.5	25
Grade 6	25.5	28
Grades 7-8	25.0	28
Grades 9-12	26.6	31

## Classrooms & Pupil-Teacher Ratio (PTR)

	Student Count*	Classrooms Available	Grades K-5 Classrooms Needed For:		
			25:1 PTR**	24:1 PTR	23:1 PTR
Anderson-Crawford Elementary	424	23	17	18	18
Anne Wien Elementary	454	23	18	19	20
Arctic Light Elementary	491	28	20	20	21
Barnette Elementary	452	18	18	19	20
Denali Elementary	380	18	15	16	17
Ladd Elementary	497	24	20	21	22
North Pole Elementary	472	23	19	20	21
Ticasuk Brown Elementary	505	23	20	21	22
University Park Elementary	498	22	20	21	22
Weller Elementary	482	23	19	20	21
Woodriver Elementary	471	24	19	20	20

\*Based on December 6, 2024 student enrollment numbers and assuming school consolidation.

\*\*Current grades K-5 Pupil-Teacher-Ratio.

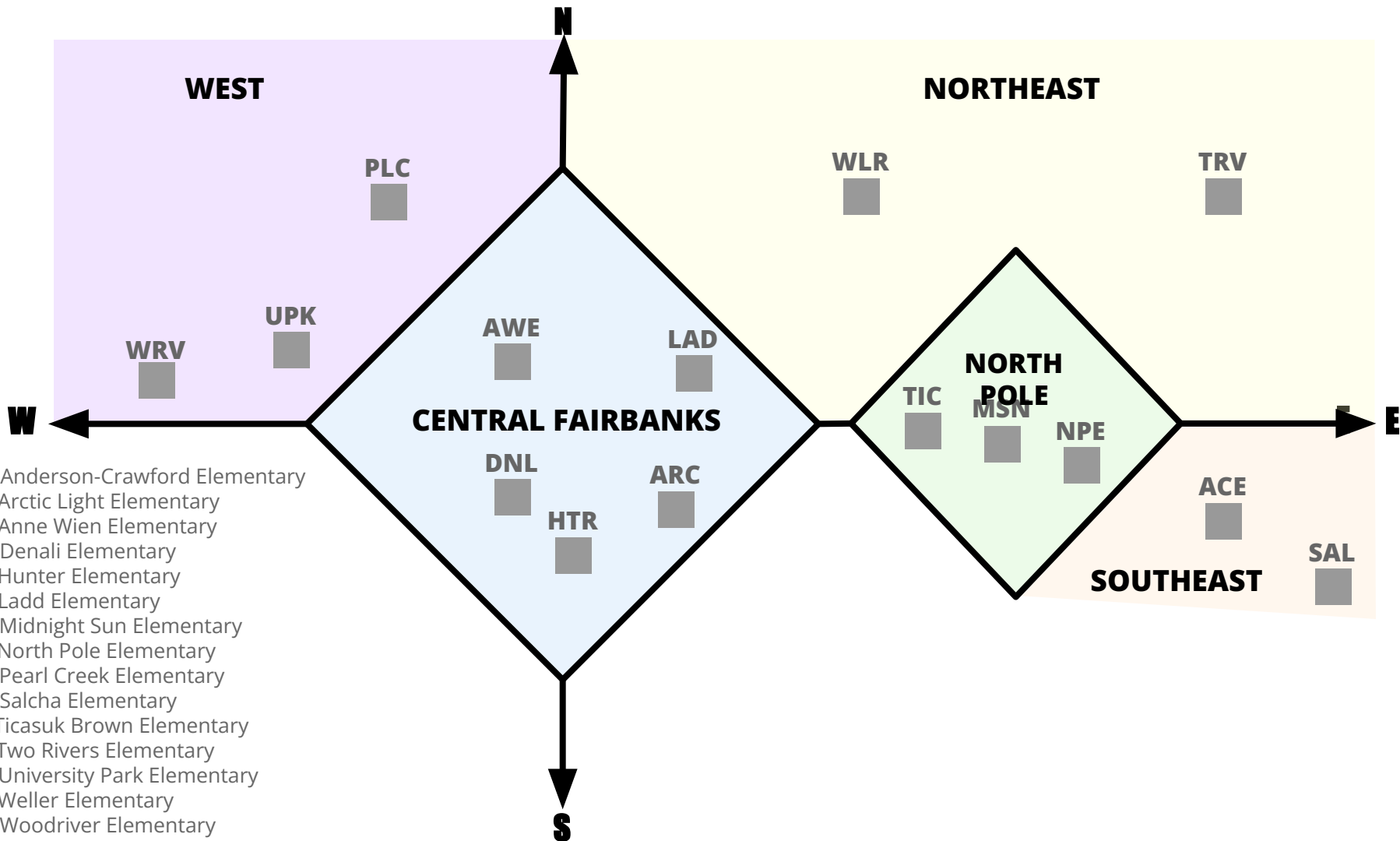
# Questions?





# Redistricting

School boundary changes



- ACE:** Anderson-Crawford Elementary
- ARC:** Arctic Light Elementary
- AWE:** Anne Wien Elementary
- DNL:** Denali Elementary
- HTR:** Hunter Elementary
- LAD:** Ladd Elementary
- MSN:** Midnight Sun Elementary
- NPE:** North Pole Elementary
- PLC:** Pearl Creek Elementary
- SAL:** Salcha Elementary
- TIC:** Ticasuk Brown Elementary
- TRV:** Two Rivers Elementary
- UPK:** University Park Elementary
- WLR:** Weller Elementary
- WRV:** Woodriver Elementary

# Students Impacted by Boundary Changes\*

Anne Wien Elementary	99
Denali Elementary	50
<b>Hunter Elementary</b>	<b>234</b>
Ladd Elementary	97
<b>Midnight Sun Elementary</b>	<b>230</b>
<b>Pearl Creek Elementary</b>	<b>290</b>
Salcha Elementary	47
Two Rivers Elementary	57
University Park Elementary	48

**Total Elementary: 1,152**

North Pole High	11
North Pole Middle	2
Randy Smith Middle	25

**Total Secondary: 38**

**Total Students Impacted: 1,190**  
10% of student body

# Draft School Boundary Maps

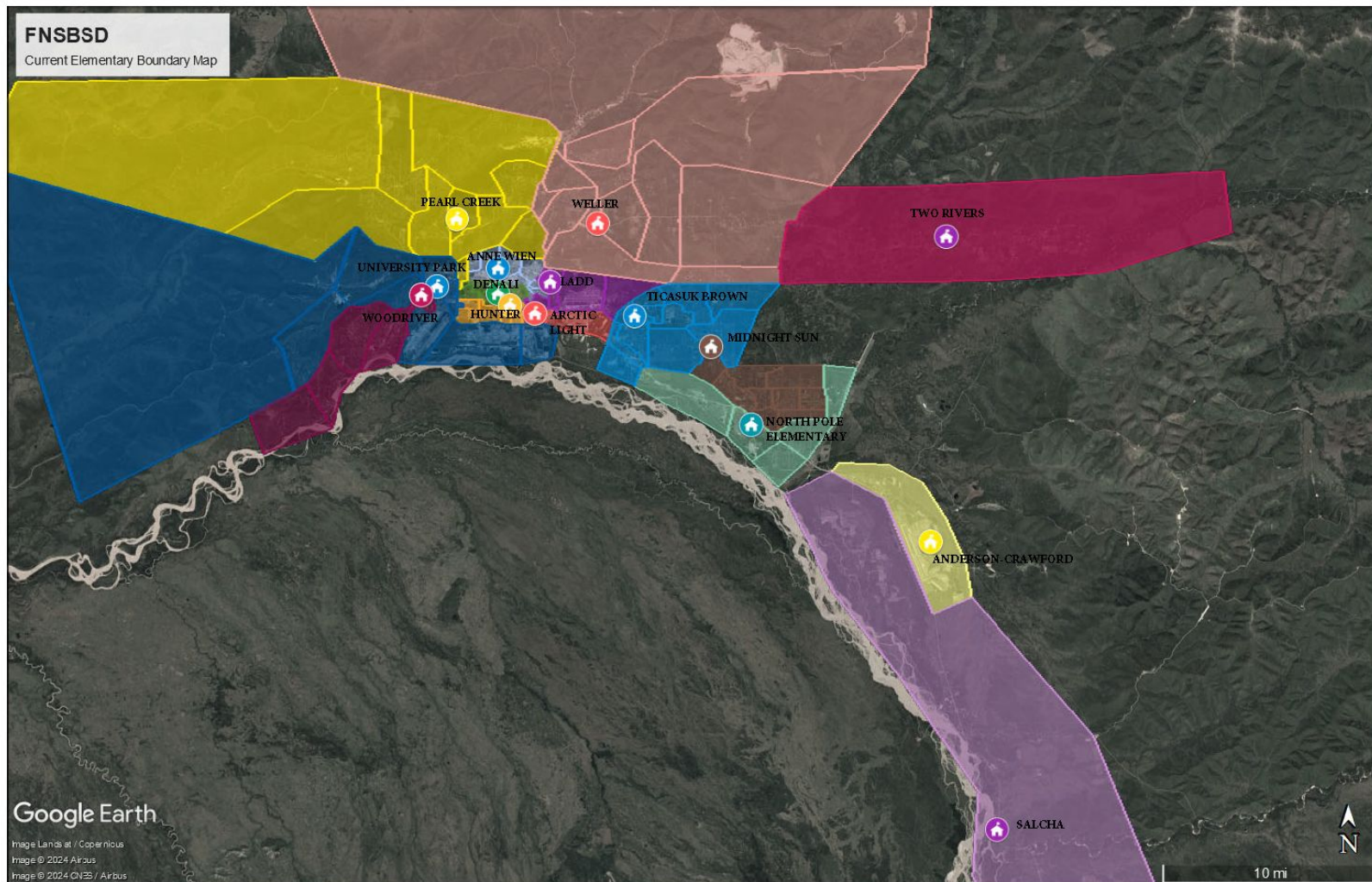
<https://bit.ly/4fVb1MT>

Please note that the recommended plan maps are  
**drafts** and subject to change.



# FNSBSD

Current Elementary Boundary Map

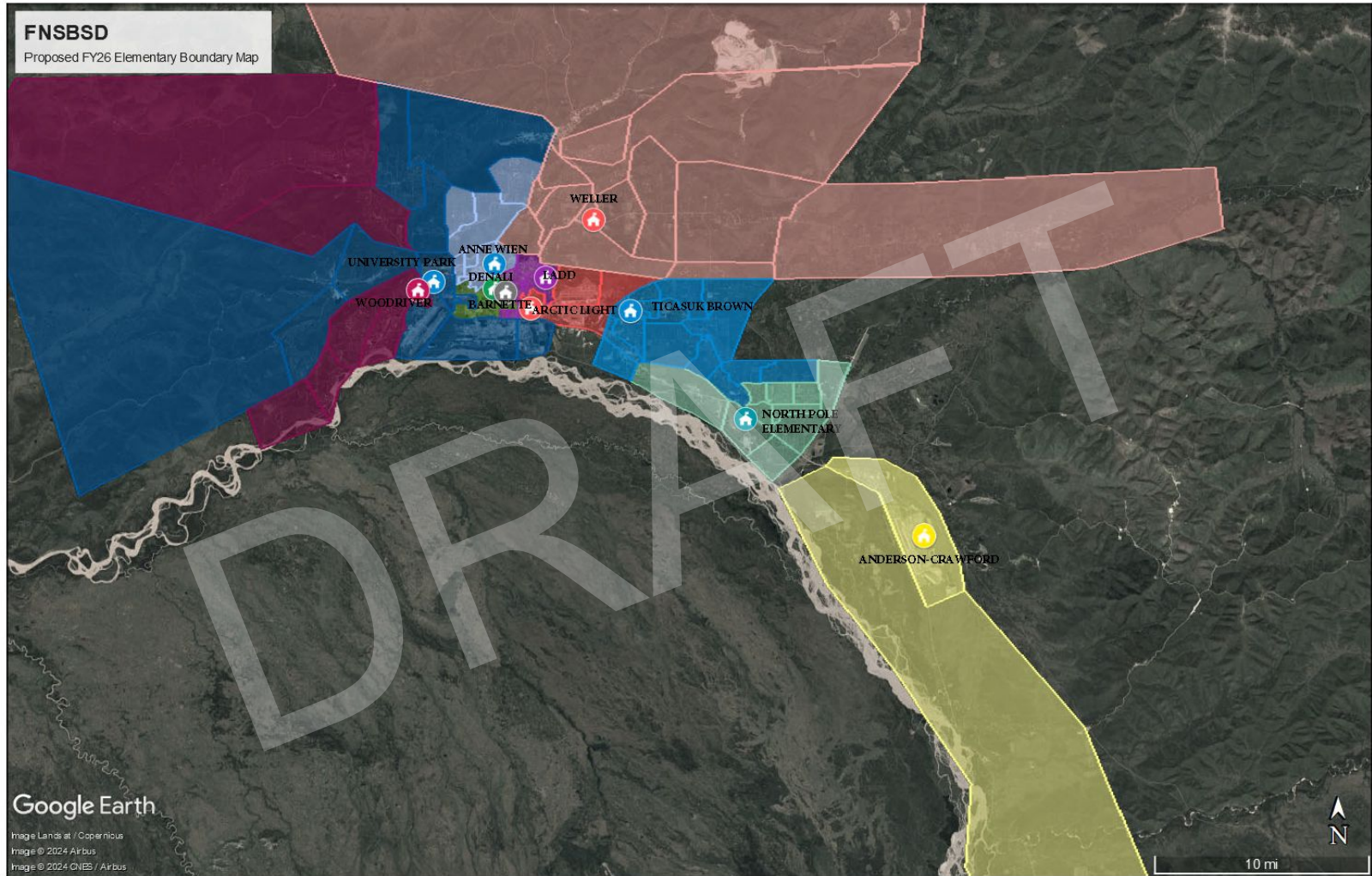


Google Earth

Image Landsat / Copernicus  
Image © 2024 Airbus  
Image © 2024 CNES / Airbus

# FNSBSD

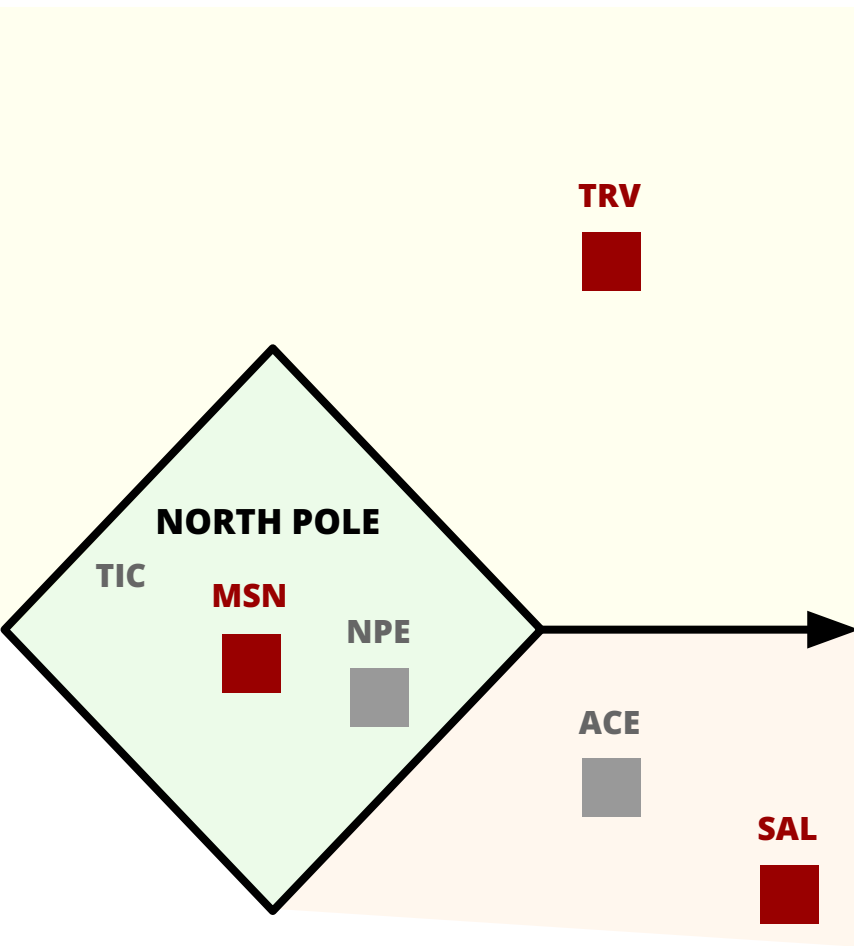
Proposed FY26 Elementary Boundary Map



Google Earth

Image Landsat / Copernicus  
Image © 2024 Airbus  
Image © 2024 CNES / Airbus

# Elementary Schools



# North Pole Area

## North Pole Area

Current Elementary Boundary Map



TICASUK BROWN



MIDNIGHT SUN



NORTH POLE ELEMENTARY

Google Earth

Image © 2024 Maxar Technologies  
Image © 2024 Airbus



3 mi

## North Pole Area

Proposed FY26 Elementary Boundary Map

Ticasuk Brown

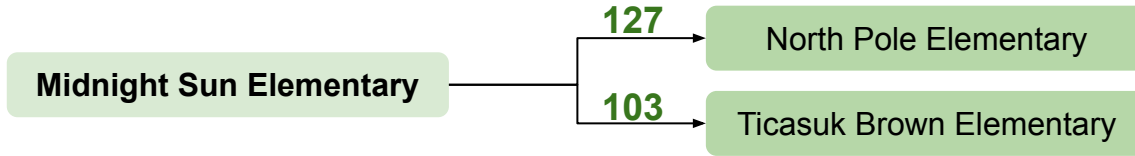
NORTH POLE ELEMENTARY

Google Earth

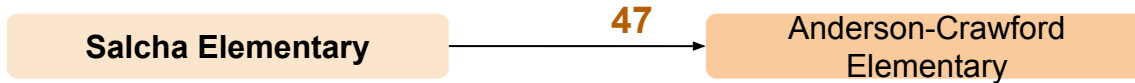
Image © 2024 Maxar Technologies  
Image © 2024 Airbus

3 mi

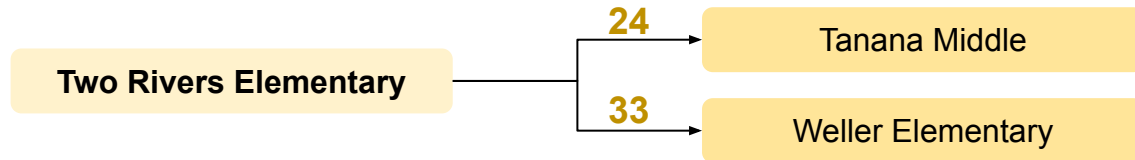
# Student Migration



**230 Students  
Grades K-4,**

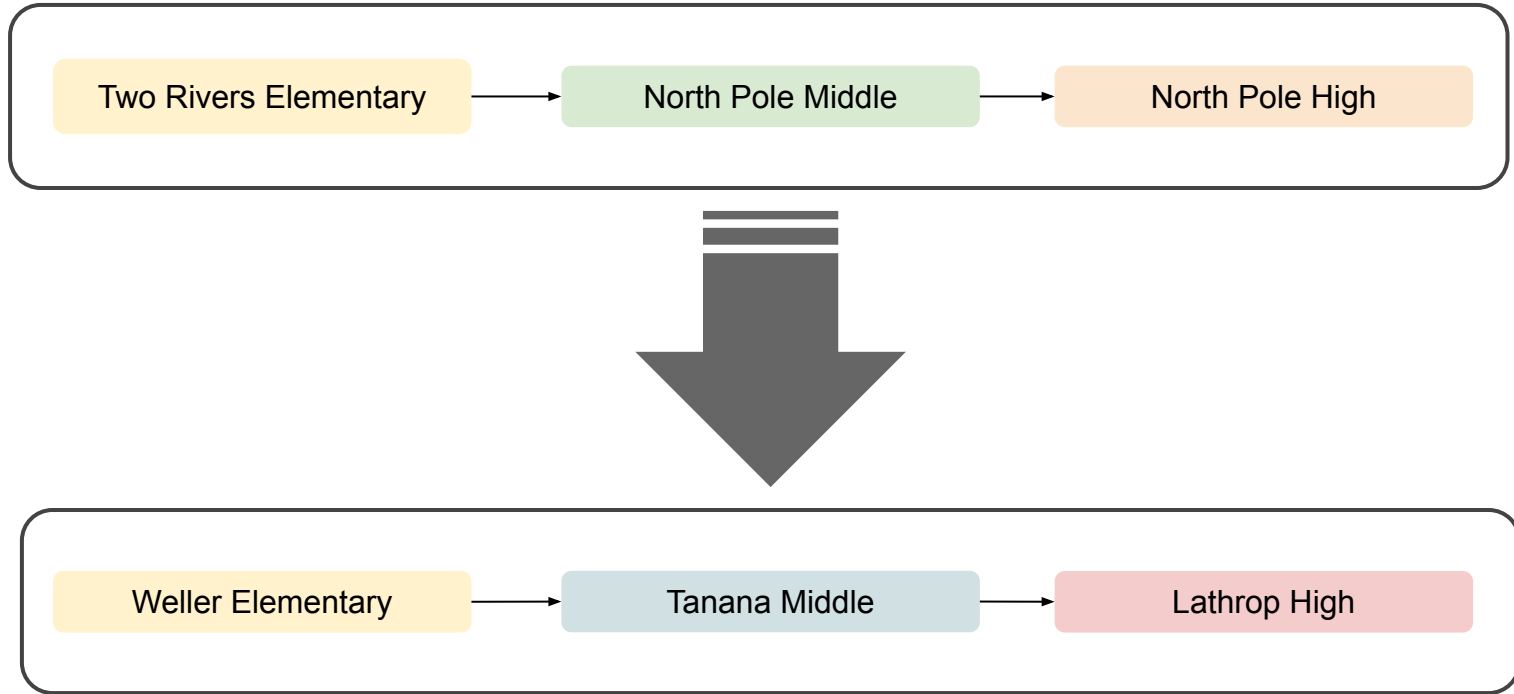


**47 Students  
Grades K-4,**



**57 Students  
Grades K-4, 6-7**

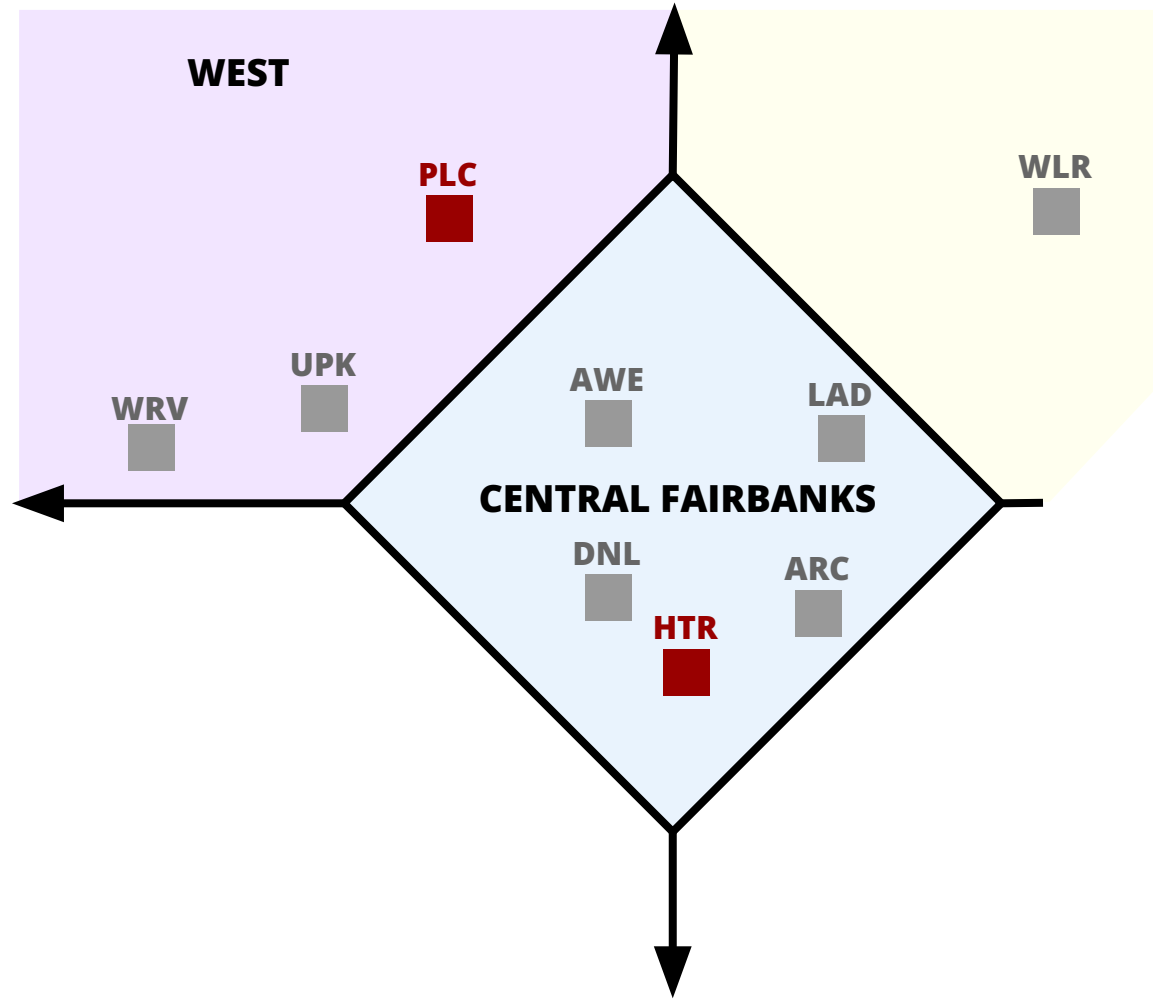
# Two Rivers Feeder System Change



# Questions?

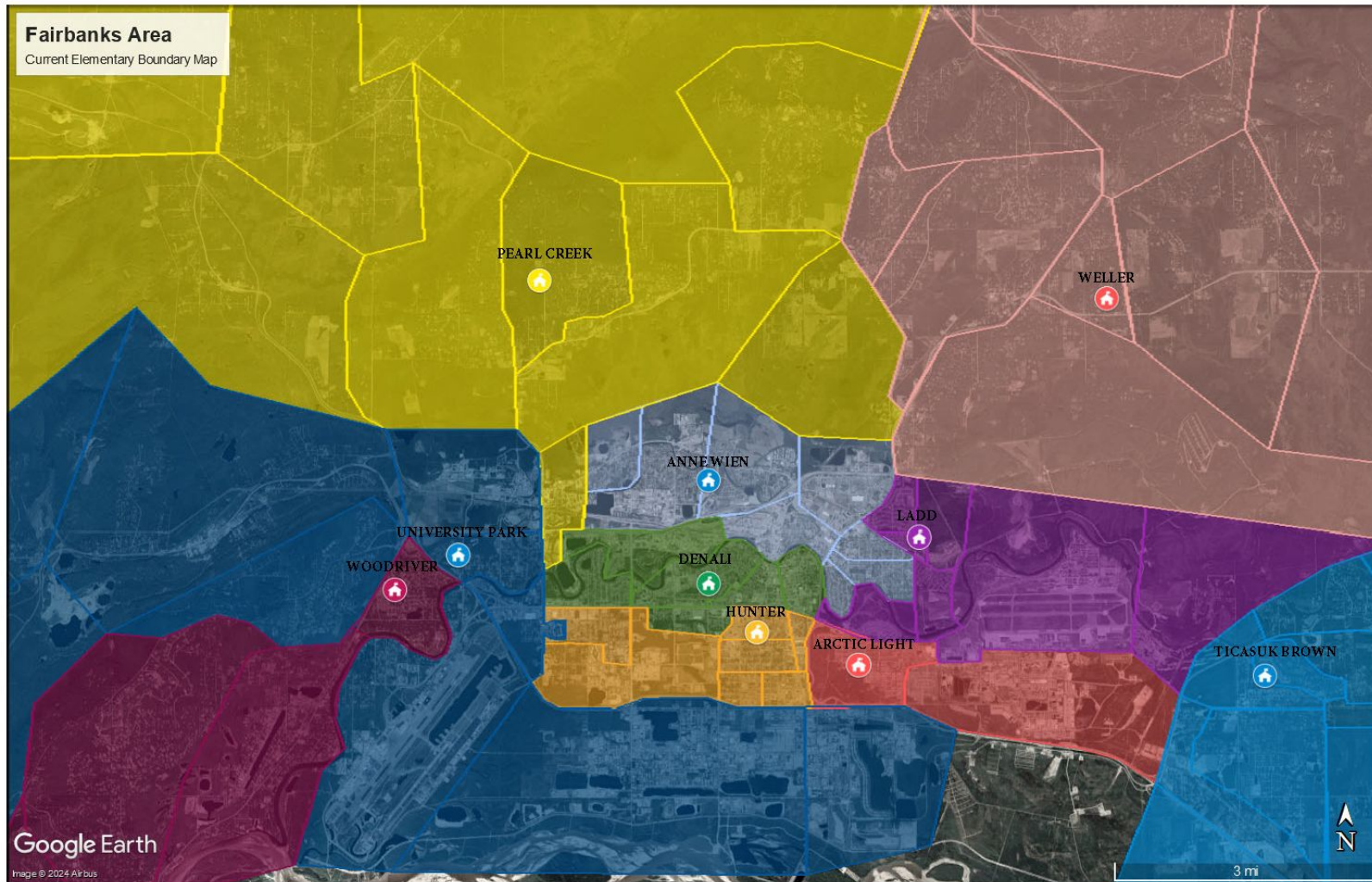


# Fairbanks Area



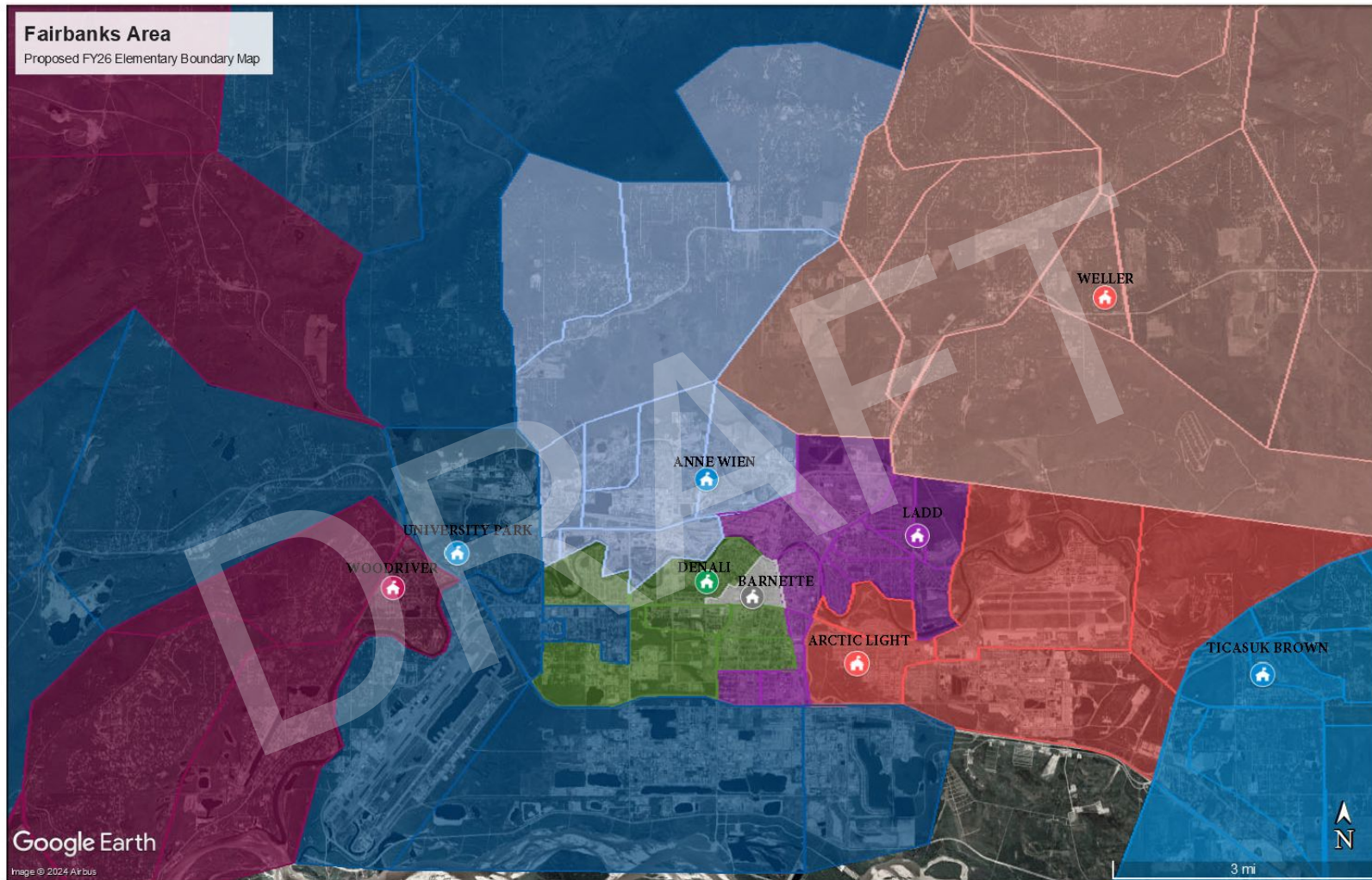
## Fairbanks Area

Current Elementary Boundary Map

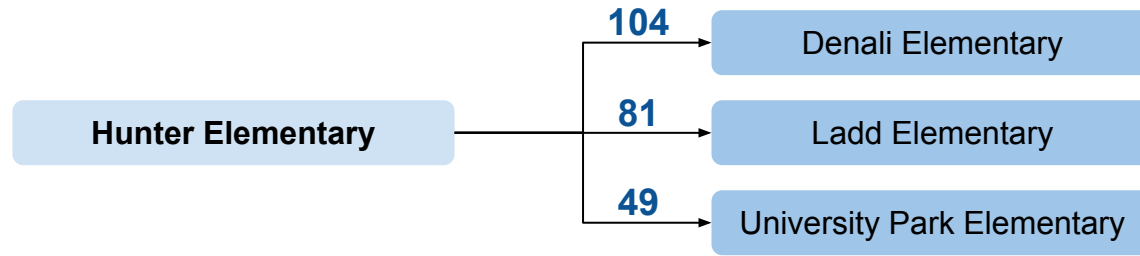


## Fairbanks Area

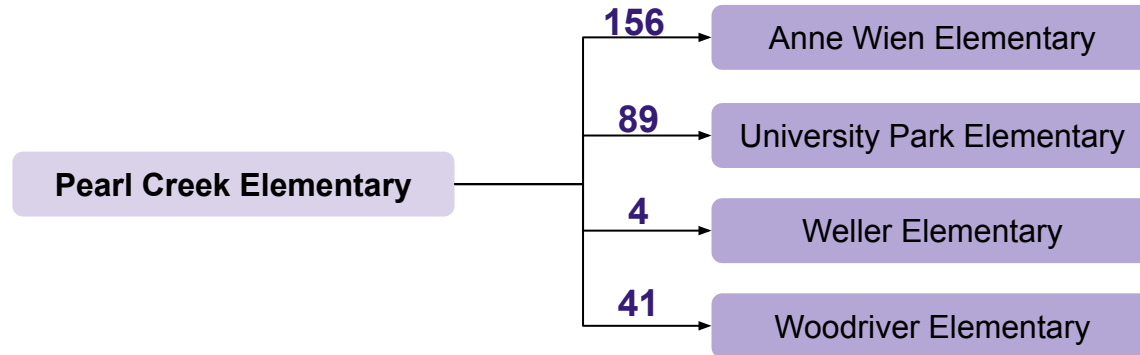
Proposed FY26 Elementary Boundary Map



# Student Migration

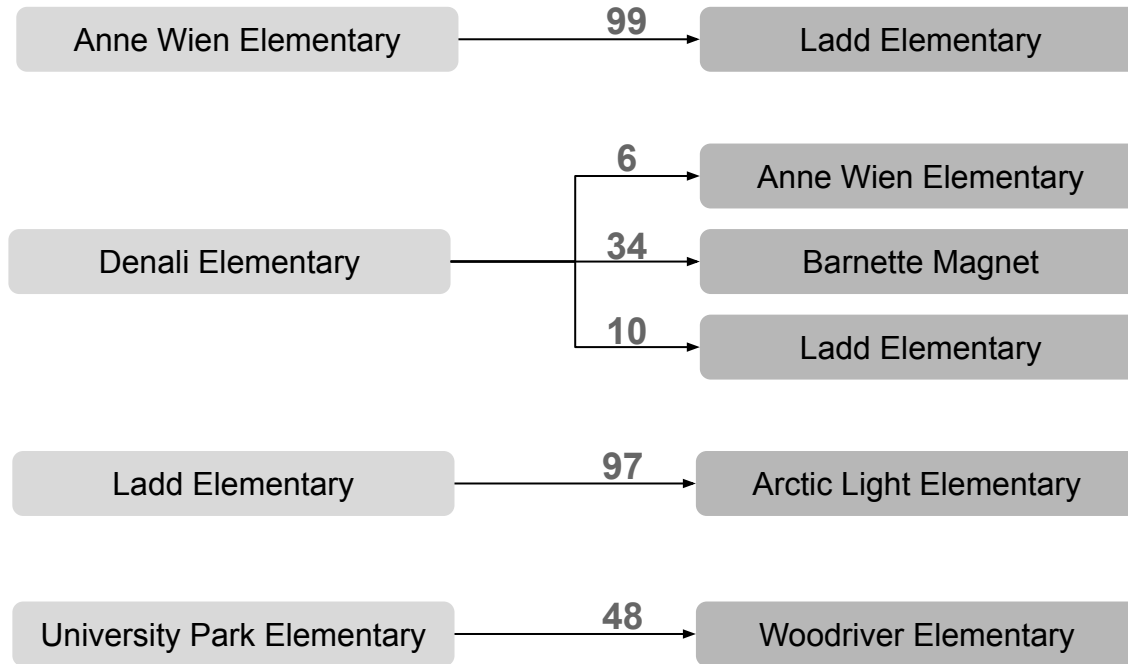


**234 Students  
Grades K-4**



**290 Students  
Grades K-4**

# Student Migration - Elementary



**294 Students  
Grades K-4**

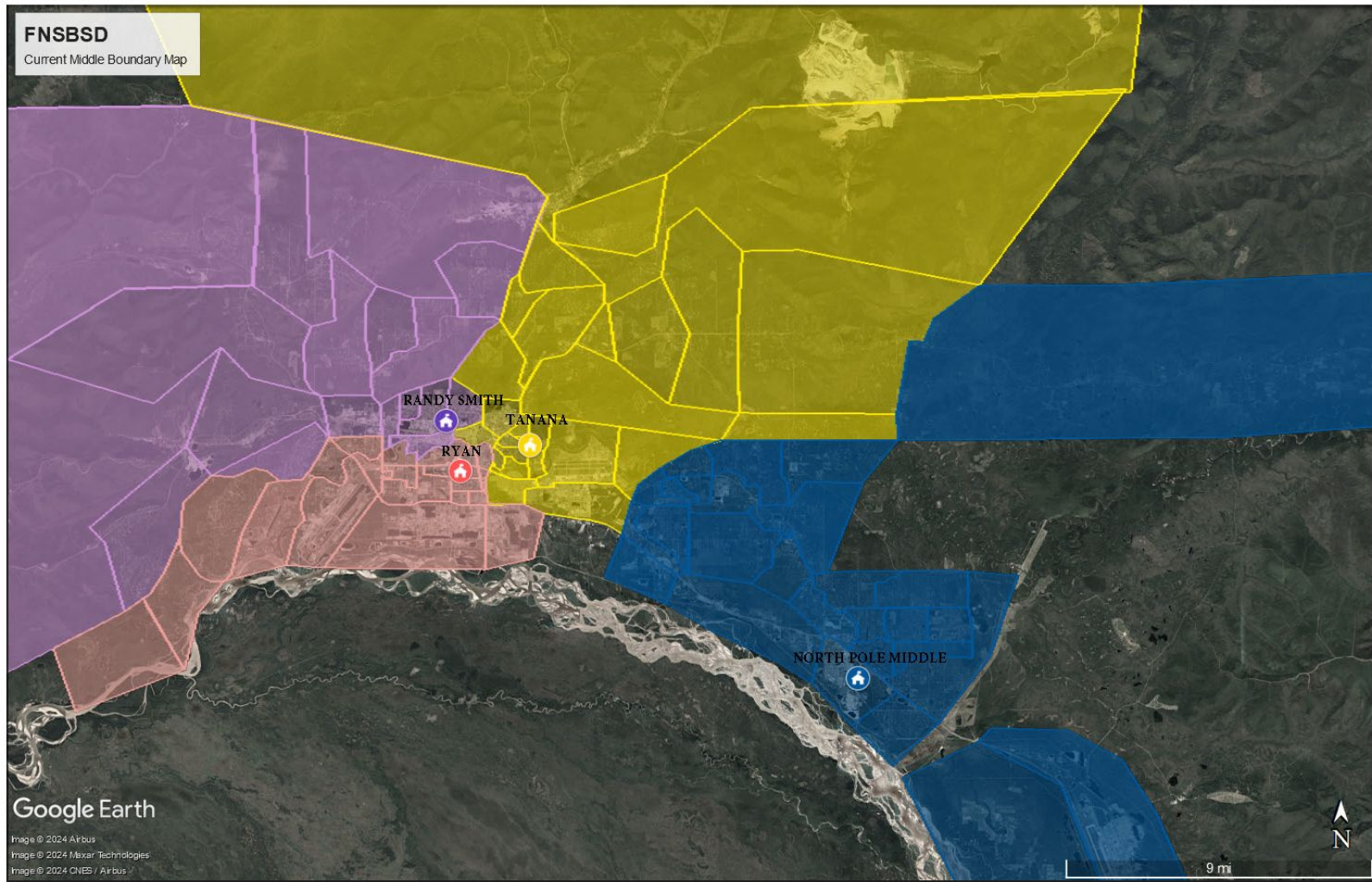
# Questions?



# Middle Schools

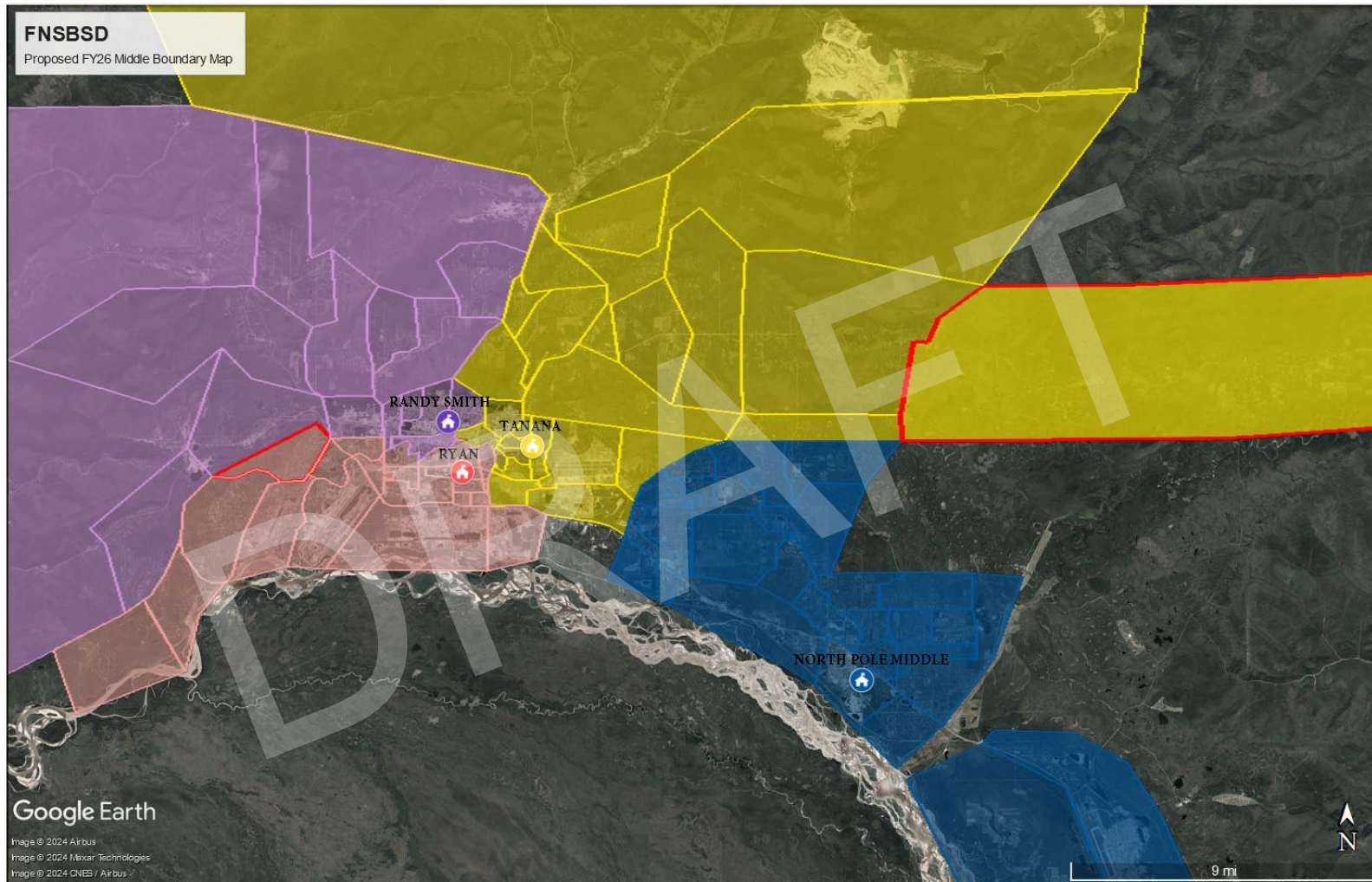
# FNSBSD

Current Middle Boundary Map



# FNSBSD

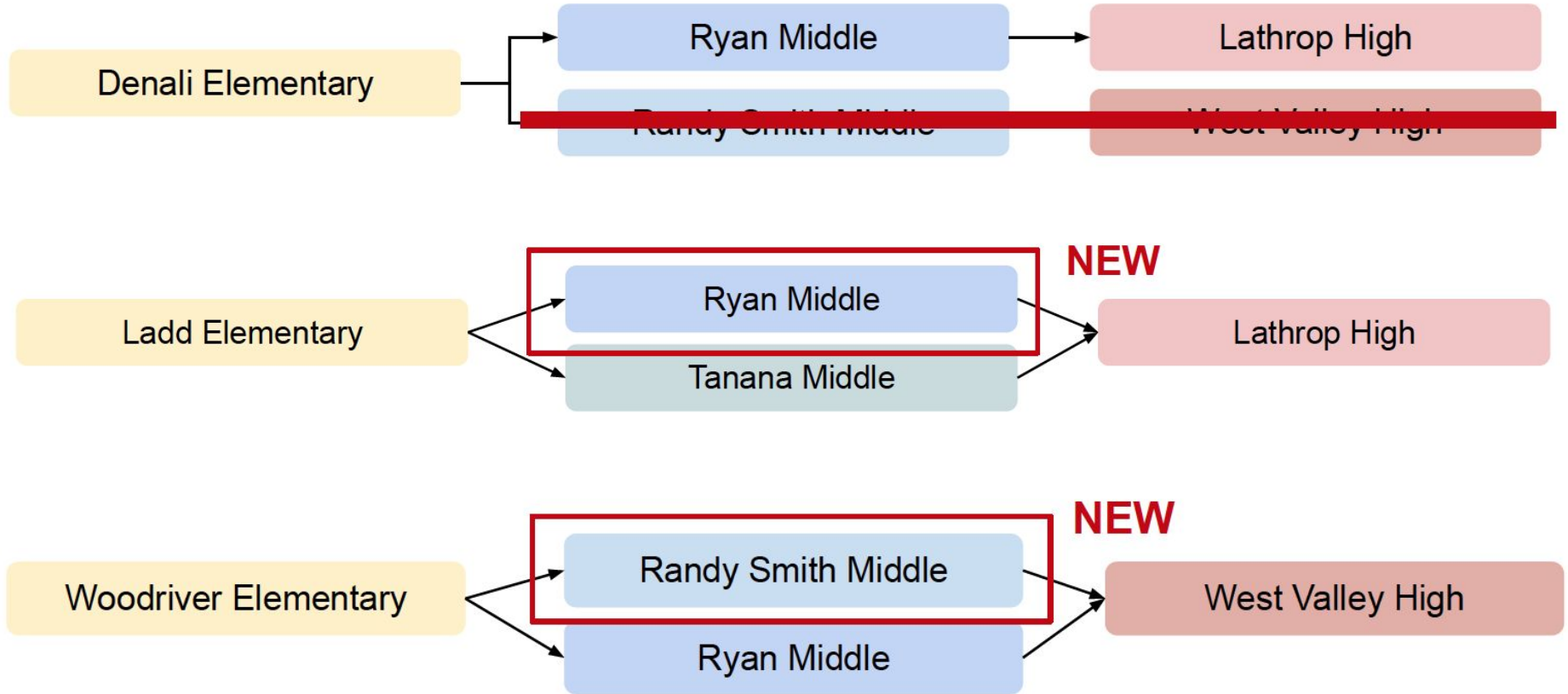
Proposed FY26 Middle Boundary Map



Google Earth

Image © 2024 Airbus  
Image © 2024 Maxar Technologies  
Image © 2024 CNES / Airbus

# Feeder System Changes



# Questions?



# High Schools

# FNSBSD

Current High School Boundary Map

WEST VALLEY

LATHROP

NORTH POLE HIGH

Google Earth

Image © 2024 Airbus

Image © 2024 Maxar Technologies

Image © 2024 CNES / Airbus

8 mi

N

# FNSBSD

Proposed FY26 High School Boundary Map

WEST VALLEY

LATHROP

NORTH POLE HIGH

Google Earth

Image © 2024 Airbus

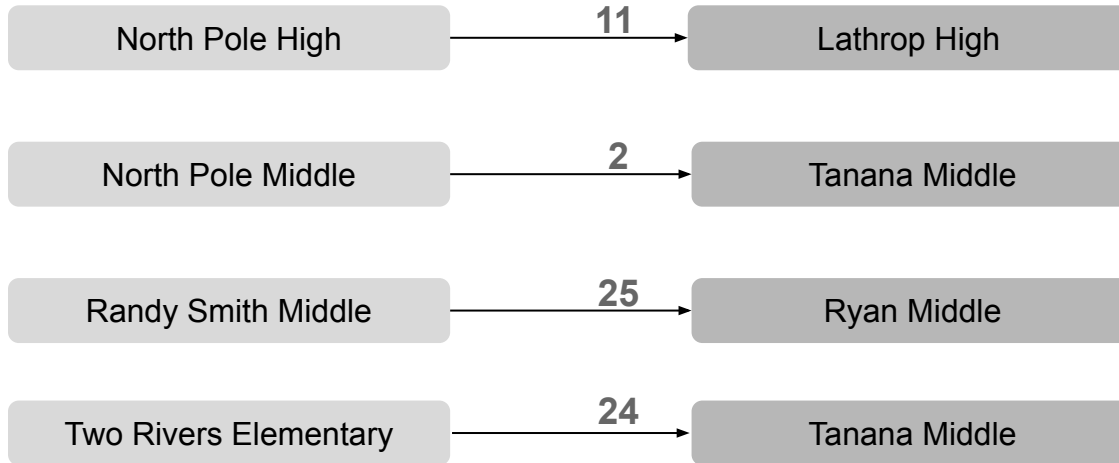
Image © 2024 Maxar Technologies

Image © 2024 CNES / Airbus

8 mi

N

# Student Migration – Secondary



**62 Students  
Grades 6-11**

# Questions?





# Transportation

Bus route changes and travel times

# Route Time vs Ride Time

- **Route Time:** This is the **total time it takes for a bus to travel its entire route**, starting from the first pickup to when it arrives at the school.
- **Ride Time:** This refers to the **time a student spends on the bus**, measured from their pickup stop to the school. It's often expressed as an average across all stops on the route.



# Overall Route Changes

	Current	Proposed	Change
Total Routes	60	58	-2
Max Route Time	61 minutes	68 minutes	+7 minutes
Min Route Time	13 minutes	13 minutes	0
Average Route Time	34 minutes	34 minutes	0
Median Route Time	34 minutes	33 minutes	-1 minute
Max Distance	31 miles	36 miles	+5 miles
Min Distance	1 miles	1 mile	0
Average Distance	11 miles	11 miles	0
Median Distance	10 miles	10 miles	0

# Two Rivers Elementary Route Changes

	Current	Proposed	Change
Total Routes	1	1	0
Max Route Time	51 minutes	43 minutes	-8 minutes
Min Route Time	51 minutes	43 minutes	-8 minutes
Average Route Time	51 minutes	43 minutes	-8 minutes
Median Route Time	51 minutes	43 minutes	-8 minutes
Max Distance	26 miles	24 miles	-2 miles
Min Distance	26 miles	24 miles	-2 miles
Average Distance	26 miles	24 miles	-2 miles
Median Distance	26 miles	24 miles	-2 miles

# Two Rivers Elementary Ride Time Changes

The average student ride time will **increase 3 minutes** .

# Midnight Sun Elementary Route Changes

	Current	Proposed	Change
Total Routes	6	6	0
Max Route Time	52 minutes	43 minutes	-9 minutes
Min Route Time	25 minutes	21 minutes	-4 minutes
Average Route Time	34 minutes	32 minutes	-2 minutes
Median Route Time	32 minutes	32 minutes	0
Max Distance	17 miles	16 miles	-1 mile
Min Distance	10 miles	6 miles	-4 miles
Average Distance	12 miles	11 miles	-1 mile
Median Distance	11 miles	11 miles	0

# Midnight Sun Elementary Ride Time Changes

## To Ticasuk Brown Elementary:

- Students in the Woll Road, Badger Road, and Repp Road areas will see an average ride time **increase of 6 minutes** .
- Students in the Plack Road area will see an average ride time **increase of 10 minutes** .

## To North Pole Elementary:

- Students in the Hurst Road and Nelson Road areas will see an average ride time **decrease of 5 minutes** .
- Students in the Moosewalk Road, Mission Road, and Newby Road areas will see an average ride time **decrease of 6 minutes** .

# Hunter Elementary Route Changes

	Current	Proposed	Change
Total Routes	3	3	0
Max Route Time	18 minutes	23 minutes	+5 minutes
Min Route Time	15 minutes	16 minutes	+1 minute
Average Route Time	17 minutes	18 minutes	+1 minute
Median Route Time	17 minutes	16 minutes	-1 minute
Max Distance	5 miles	6 miles	+1 mile
Min Distance	4 miles	4 miles	0
Average Distance	4 miles	5 miles	+1 mile
Median Distance	4 miles	5 miles	+1 mile

# Hunter Elementary Ride Time Changes

## To Denali Elementary:

- Students in the Gillam Way and 17th-23rd Ave areas (former walk zone) will see an average ride time **increase of 20 minutes** .
- Students in the Davis Road area will see an average ride time **increase of 10 minutes** .

## To Ladd Elementary:

- Students in the South Cushman Street, Bjerrmark Street, and Davis Road areas will see an average ride time **increase of 10 minutes** .

## To University Park Elementary:

- On average, there will be **no change** to student ride times.

# Pearl Creek Elementary Route Changes

	Current	Proposed	Change
Total Routes	8	7	-1
Max Route Time	59 minutes	68 minutes	+9 minutes
Min Route Time	23 minutes	19 minutes	-4 minutes
Average Route Time	36 minutes	40 minutes	+4 minutes
Median Route Time	33 minutes	39 minutes	+6 minutes
Max Distance	31 miles	30 miles	-1 mile
Min Distance	6 miles	4 miles	-2 miles
Average Distance	12 miles	15 miles	+3 miles
Median Distance	10 miles	14 miles	+4 miles

# Pearl Creek Elementary Ride Time Changes

## To Anne Wien Elementary:

- Students in the Auburn Road area will see an average ride time **increase of 8 minutes** .
- Students in the Farmer's Loop and Summit Drive areas will see an average ride time **increase of 5 minutes** .
- Students in the University Ave area will see an average ride time **decrease of 2 minutes** .

## To University Park Elementary:

- Students in the Goldstream Road areas will see an average ride time **increase of 2 minutes** .
- On average, for students in the Yankovich Road area there will be **no change** to student ride times.

# Pearl Creek Elementary Ride Time Changes

## To Weller Elementary:

- On average, for students in the Echo Acres Drive area there will be **no change** to student ride times.

## To Woodriver Elementary:

- Students in the Murphy Dome Road area will see an average ride time **increase of 7 minutes** .
- Students in the Sheep Creek Road area will see an average ride time **decrease of 6 minutes** .

# Salcha Elementary Route Changes

	Current	Proposed	Change
Total Routes	3	2	-1
Max Route Time	55 minutes	64 minutes	+9 minutes
Min Route Time	22 minutes	64 minutes	+42 minutes
Average Route Time	43 minutes	64 minutes	+21 minutes
Median Route Time	49 minutes	64 minutes	+15 minutes
Max Distance	20 miles	36 miles	+16 miles
Min Distance	15 miles	19 miles	+4 miles
Average Distance	18 miles	37 miles	+19 miles
Median Distance	16 miles	28 miles	+12 miles

# Salcha Elementary Ride Time Changes

The average student ride time will **increase 20 minutes** .

# Additional Ride Time Changes

## Anne Wien Elementary students to Ladd Elementary:

- Students in the Minnie Street area will see an average ride time **increase of 4 minutes** .
- Students in the Hamilton Acres and Slater Drive areas will see an average ride time **decrease of 3 minutes** .

## Denali Elementary students:

- **To Ladd Elementary:** Students in the East downtown area will see an average ride time **increase of 2 minutes** .
- **To Anne Wien Elementary:** Students in the Phillips Field Road area will see an average ride time **decrease of 5 minutes** .

# Additional Ride Time Changes

## Ladd Elementary students to Arctic Light Elementary:

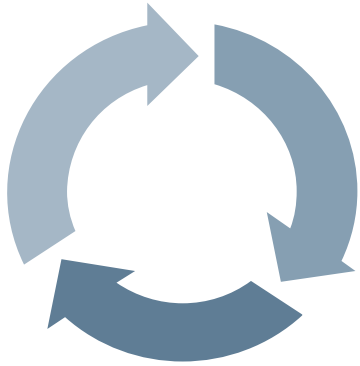
- Students in the Buckeye Lane, North Post, and Nautilus Drive areas will see an average ride time **decrease of 10 minutes** .

## University Park Elementary students to Woodriver Elementary:

- Students in the East Chena Ridge Road area will see an average ride time **decrease of 2 minutes** .

# Questions?





# Repurposing Buildings

Potential school district alternative uses

**Phase 1**  
Spring  
2024 - Now

**Community Feedback**  
Survey and focus groups are used to gather input from families, students, staff, and community members.

**Phase 2**  
August -  
November  
2024

**Community Facility Team**  
Reviews feedback to determine educational direction and craft school consolidation framework.

**Phase 3**  
November -  
December  
2024

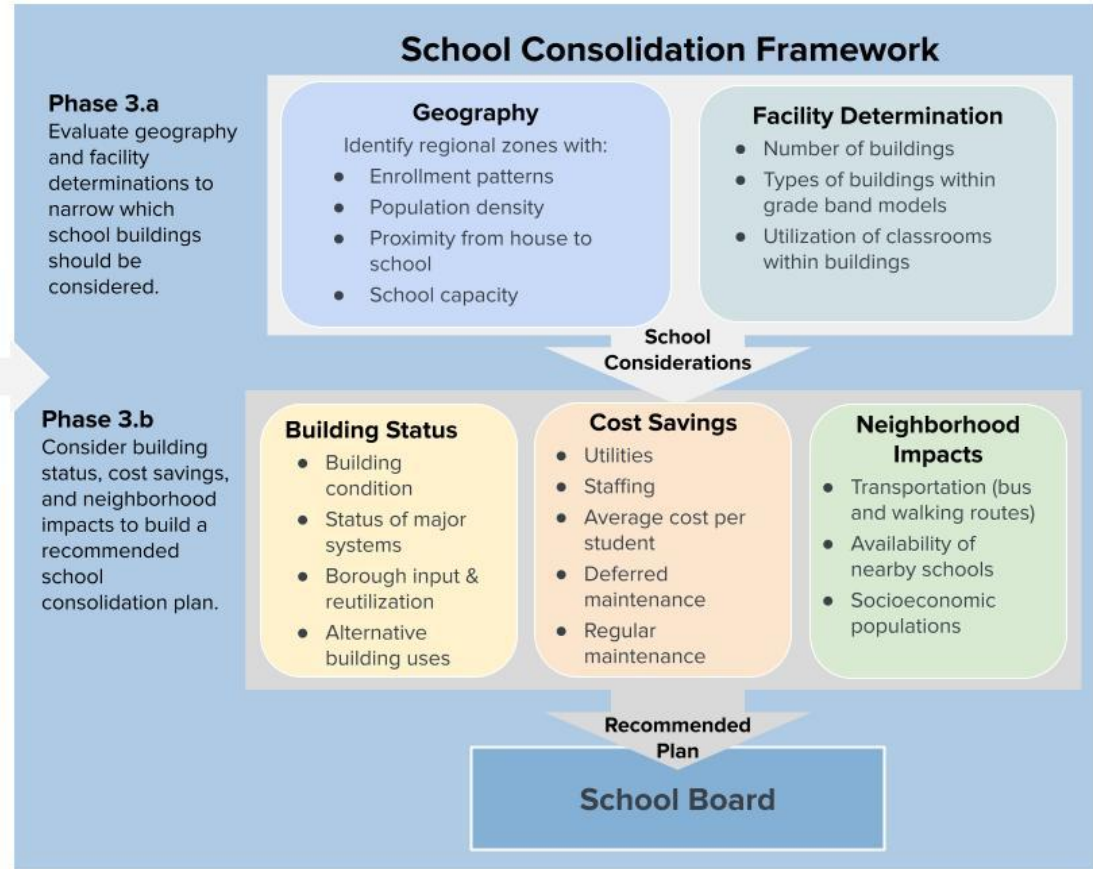
**District Administration**  
Works through framework to determine a recommended plan.

**Phase 4**  
January -  
February  
2025

**School Board**  
Reviews the process and information gathered, listens to public testimony, and makes the final decision on school consolidation.

**Phase 5**  
February -  
June 2025

**School Consolidation**  
District team works with impacted school communities throughout the transition process.



# Options for Buildings

- Return to the Fairbanks North Star Borough.
- School district retains building and mothballs it.
- School district retains building and uses it to improve educational options for students, but at a lower cost than running a full school.

# Why Repurpose Buildings

- Is there a less expensive use of the building that would still benefit students
- Preserve the ability to grow
- Possible financial benefits
- Retain a valuable asset
- Provide space for future programs i.e. daycare, preschool, etc.
- Provide opportunities for alternative education students

# Repurpose Recommendations & Options

## Recommendation

- Midnight Sun Elementary: Repurpose Midnight Sun building for Star of the North, SMART, and a BEST satellite office.

## Options

- Pearl Creek Elementary and Hunter Elementary: The school district is obligated to offer the buildings for charter use.
- Salcha Elementary and Two Rivers Elementary: BEST satellite schools with one certified teacher for each location.

# Repurposing Budget Impact

Approximately **\$235,000** annual costs to repurpose an elementary building.

- Utilities (ongoing)
- Custodial (ongoing)
- Retrofitting (1x)

# Timeline to Return Buildings to Borough

<b>July 1, 2025</b>	<b>2025-26</b>	<b>2026-27</b>	<b>2027-28</b>
Schools closed and attendance areas changed	Salcha Elementary	Pearl Creek Elementary	Hunter Elementary
	Two Rivers Elementary		

# Questions?





# Staff Impact

Human Resources processes for affected employees

# Staff Impacted

	Support Staff (ESSA)	Teachers (FEA)	Principals (FPA)	Total
Hunter Elementary	32	21	1	54
Midnight Sun Elementary	19	19	1	39
Pearl Creek Elementary	14	24	1	39
Salcha Elementary	7	4	1	12
Two Rivers Elementary	8	5	1	14
<b>Total</b>	<b>80</b>	<b>73</b>	<b>5</b>	<b>158</b>

# Position Reductions

- Principal
- Music and PE Teachers
- Counselor
- Nurse
- Library Associate
- Administrative & Attendance Secretaries
- Custodians
- Food Service Staff

# Estimated Staff Vacancies

- We expect that most staff reductions resulting from school consolidation will be addressed through attrition, such as unfilled staff vacancies.
- The exact number of vacancies will not be confirmed until the FY26 proposed budget is finalized, teacher contracts are signed, the Pupil-to-Teacher Ratio (PTR) is determined, and course selections at the secondary level are finalized, all of which will establish staffing requirements.

# Process of Transferring Staff

- We're working with our labor unions on the transition process to ensure that we're supportive of staff and removing as many barriers as possible.
- We've agreed to a retirement extensions with FEA and are working on an agreement with ESSA.

# What's Next:

**JAN 27**

## Students & Instruction

- Special Education
- Teaching & Learning
- Title I
- Support Plan

# Questions?

